



Top Aggies honored for their contributions to Northwest School and communities

The Top Aggie award is an honor given to outstanding NWSA alumni who have distinguished themselves through career achievement, community service, and alumni involvement.

The first Top Aggie award was presented in 1970 to Herschel Lysaker as a former staff member. Bill Strickler '30 of Euclid was the first alumnus honored in 1971. Since then, 35 other Aggie alumni and staff have received Top Aggie awards at the summer reunion.

Each year class leaders, members of the board of directors, and individual alumni submit nominations from within the honored classes. At the 1984 NWSA reunion awards were presented to Claudia Hanson Deery '64, Mr. and Mrs. Ken Price '44 and '47, Mr. and Mrs. Rodney Webster '49 and '50, and a staff award honoring the memory of William Menzhuber.



Ruth Menzhuber accepted a Top Aggie plaque given in memory of her husband Bill. Taking part in the presentation were, from left, Alumni President Allan Dragseth, former NWSA Superintendent B.E. Youngquist, and UMC Provost S.D. Sahlstrom.

WILLIAM MENZHUBER MEMORIAL AWARD

Ruth Menzhuber accepted the Top Aggie plaque given in memory of her husband Bill from UMC provost S.D. Sahlstrom and former NWSA Superintendent B.E. Youngquist.

Bill joined the staff of the Northwest School in 1955 as an agriculture instructor. In 1966 he was named director of UMC plant services, a post he held until his death in 1983.

Bill was instrumental in designing the present campus landscaping and building layout. His long-range vision for the grounds insures that it will continue to be a scenic highlight in northwestern Minnesota.

The Menzhubers' sons Michael and Robert attended the award presentation with their mother.

RODNEY and JEAN WEBSTER

Rodney '49 and Jean (Anderson) '50 Webster were honored for their commitment to quality family life in a rural setting.

The Websters recently moved across the border from St. Vincent, MN, to Pembina, ND. Over the years Rodney has established a strong reputation for agricultural lobbying efforts in St. Paul, Bismarck, and Washington, D.C. He is a member of the board of directors of Crystal Sugar in Moorhead, MN, and active in the Minn-Dak Growers Association in the Red River Valley.

Rodney and Jean are active in community and church events. They have also taken a special interest in the development of Camp Courage. The Websters have two daughters and one son.

Alumni association secretary-treasurer Marjorie Ophus Mjelde '49 of Erskine introduced the Websters and presented their Top Aggie plaque.



Marjorie Ophus Mjelde, secretary-treasurer of the alumni board, presented Top Aggie honors to Jean and Rodney Webster of Pembina, ND.



Claudia Deery Hanson (center) of Mission Hills, SD was introduced as a 1984 Top Aggie by class leader Judy Rivard Schuster of Argyle, MN and Alumni President Allan Dragseth of Eldred, MN.

CLAUDIA HANSON DEERY

Claudia Hanson Deery '64 is a native of Reynolds, ND, currently living in Mission Hills, SD.

In 1966 Claudia graduated from a nursing program and was employed by the State Hospital in Jamestown, ND. She married Robert Deery in 1968 and they have raised a family of four while living in North Dakota, Oregon, Nebraska, and South Dakota. Their children are Robin, Charmel, Andrea, and James.

During the past eight years Claudia and Robert have also cared for 24 foster children. Along with commitment to the foster parent program and her extended family, Claudia has maintained a career as a pharmacy technician. She is employed by the White Drug Store in Yankton, SD.

Her interests also include involvement in Parent Teacher Organization, church activities, and social service organizations.

She received her Top Aggie award from 1964 class leader Judy Rivard Schuster of Argyle.



Ken and Rose Marie Price of Stephen, MN received their Top Aggie award from NWSA Alumni Association board member Leonard Yutrzenka (left) of Argyle, MN.

KEN and ROSE MARIE PRICE

Ken '44 and Rose Marie (Kochmann) '47 Price are active residents of the Stephen, MN community, living on the Price family farm which is near its centennial year.

Along with their farming operation, Ken has served ten years as Marshall County commissioner. He has served on numerous county boards and was the 1983 president of the Minnesota Association of Counties. In the Stephen community he is a member of the Lions Club and the Knights of Columbus.

Ken and Rose Marie are active members of their local church. They have also been supportive of the NWSA Alumni Association. Rose Marie is a past secretary of the association board of directors and Ken was a class leader for the 1984 summer reunion. In addition, they are both regular guests at winter dinners and alumni events.

Leonard Yutrzenka '42, member of the NWSA Alumni Association and long-time acquaintance of the Prices, presented their Top Aggie award.

University of Minnesota President C. Peter Magrath has resigned his post to assume the presidency of the University of Missouri on January 1, 1985. Magrath has been UM president for ten years.



Brown Dining Room honors food service head



Keith Ramberg, UMC director of food services, emceed the naming ceremony. Ramberg is a 1961 NWSA graduate.

Fourteen years after her retirement from the University of Minnesota—Crookston, Myrtle Brown returned as the honored guest at the naming ceremony of Brown Dining Room.

The room is a part of the UMC food service building constructed in 1980 on the site of the former Stephens Hall. The dining room serves contract dining for students and is the primary facility for banquets and luncheon meetings on the campus.

Brown Dining Room seats 400 for a banquet and was near capacity at the reunion. The program was held prior to the reunion dinner with Keith Ramberg, UMC director of dining as emcee. Other participants in the program included Allan Dragseth, NWSA Alumni Association president; Sherry O'Gorman, UMC Alumni Association representative; Herschel Lysaker, NWSA and UMC staff representative; Roy Thompson, assistant director of the St. Paul Experiment Station; Dr. B.E. Youngquist, former NWSA superintendent; and Dr. S.D. Sahlstrom, UMC provost.

Myrtle Brown responded to remarks by these guests saying, "I was so surprised and thrilled to hear of this honor. It is truly a night to remember—and such a thrill to see the new food service building and so many friends and former students."

Mrs. Brown served as principal food service supervisor and instructor at the Northwest School

from 1954 until its closing. She continued in that position at UMC, retiring in 1970. "Ma" Brown earned her affectionate nickname through years of counseling and befriending students. She was respected by faculty, staff, and the student body of both schools.

In 1983 the UMC Honors Committee proposed that the contract dining room be named in honor of

Myrtle Brown. The decision was supported by recommendations from NWSA and UMC graduates, staff and associates. Following review by the All-College Honors Committee the recommendation was passed by the University of Minnesota Board of Regents.



Myrtle Brown received a replica of the 18" x 24" wall plaque naming the Brown Dining Room from former NWSA Superintendent B.E. Youngquist. UMC Provost S.D. Sahlstrom waited to present her with a rose bouquet.



Myrtle "Ma" Brown responded during the naming ceremony.

President reminisces about reunion highlights



Allan Dragseth '57

I thoroughly enjoyed visiting with so many of you at the June 30 reunion. It was a terrific day for everyone who gathered on the old NWSA campus to reminisce about the past and create memories for the future.

The naming of Brown Dining Room in honor of Myrtle Brown was certainly a highlight of the reunion for me. She was the counselor, friend and role model many of us looked to during our

days at the Northwest School. She remains active in alumni events and commented on how good it was to visit with former students and staff at the reunion.

I also want to say congratulations to our deserving Top Aggie recipients. It is not easy to select winners from the many outstanding nominations each year. However, I feel very proud of the accomplishments and commitments expressed by Ken and Rose Marie Price, Rodney and Jean Webster, Claudia Deery Hanson, and those shown by Bill Menzhuber's life. Your input into the 1985 selection of Top Aggies is welcome. If you have nominations or recommendations to submit please write to me at the alumni office.

Just one more thing. Don't put aside thoughts of Aggie alumni events just because the reunion is over for this year. You'll be hearing from the association throughout the year with new events, traditional gatherings in your area, and an ongoing need for your financial support of the alumni program and University of Minnesota—Crookston mission.

Keep us in mind. I look forward to visiting with you at an upcoming event or whenever you visit the White House Alumni Center.

Allan Dragseth, president



Memory Lane, an entire wall filled with photo collages from NWSA years and recent reunions, is a favorite gathering place for reunion visitors. The photos are a chronological record of NWSA people and happenings compiled by Berneil Nelson '42.

Published by the Office of Alumni Relations, Lowell Larson, director; Cheri Viestenz, editor; Ardis Thompson, secretary. Photographs by Learning Resources, Cheri Viestenz.

Alumni Association
White House
University of Minnesota
Crookston, MN 56716



David Berland '46 has left a bequest valued at over \$50,000 to the University of Minnesota—Crookston to further its programs, according to Lowell Larson, UMC director of development. Berland was a lifetime farmer near Fisher, MN.

Alumni center welcomes first guests at reunion

Remarkable. Beautiful. What a change! These were a few of the exclamations from NWSA alumni touring the White House Alumni Center during the reunion. Over 250 Aggies browsed through the restored home of NWSA superintendents' families, enjoying the renovated rooms and visualizing the additional changes planned by the restoration committee.

The main floor entertainment rooms are reminiscent of the 1920-1930 period decorated in the deep red and dusty blue colors frequently seen in homes.

The arched dining room-living room will be used for meetings, conferences, and receptions. Its dark print wallpaper with a wainscoting effect topped by a sculpted chair rail and textured walls adds size and formality to the room. Full tieback drapes in coordinating material and an accenting ceiling border give the room a complete look. Guests enter the room through multipaned French doors.

Furnishings for the living-dining room include a refinished dining room table and twelve matching chairs originally used in the home economics building. Needlepoint seat covers are being designed and stitched by alumni volunteers. (See article on project.)

The fireside room has a more casual atmosphere which will be inviting for guests who wish to page through Aggie yearbooks,

read class notes compiled in reunion booklets, or look up addresses of former classmates.

Initial remodeling of this room includes new fireplace brick in the red hues of early White House days, a heavy oak mantel, and a plush oriental rug over the refinished hardwood floor. The only remaining NWSA furniture for this room is a library table and a matron's table from Dining Supervisor Myrtle Brown's living quarters.

The original kitchen has been used as a UMC office in recent years. It will be renovated into a functional reception area for greeting guests and providing buffet meal service. The alumni staff and boards of directors for both NWSA and UMC associations anticipate frequent entertainment of alumni for receptions, teas, and full meal service.

As visitors ascend the open stairway to the alumni and development offices on the second floor they will enjoy photos taken on campus and mounted on the walls. Displays of alumni archives are planned throughout the center.

The restoration committee also has plans for the basement. This open area will house decade-by-decade archive collections for visitors who wish to reminisce about one specific time or want to see the history of the schools evolve.

All remodeling and renovating of the alumni center and its fur-

nishings are funded through alumni gifts. The boards of directors from both the NWSA and UMC Alumni Associations have designated money donated to the alumni annual fund for alumni services to be used in the restoration process. A goal of \$60,000 in personal and class gifts is needed to complete the restoration of the building. \$10,000 has already been donated and spent on the project.

Along with the physical restoration of the center the interior needs appropriate furnishings. Several items have already been donated by alumni. The center needs sofas, chairs, lamps, and accessories. If you have items from the 1920-1930 period which you would be willing to donate, please contact the alumni office.

All gifts to the alumni center, both financial and furnishings, are recorded in a gift book donated by the class of 1943. In addition, donors will be named on gift level plaques in the center and receive a record of the tax-deductible gifts for their personal records.

The alumni center is open Monday-Friday, 8:00 a.m. to 4:30 p.m. If you are in the Crookston area plan to stop at the White House and see the restoration in progress. The class of 1942 has donated a guest book for everyone to sign when they visit.



The red brick fireplace and oak mantel is a replica of ones pictured in Aggie yearbooks and personal photos from Superintendent T.M. McCall's family.

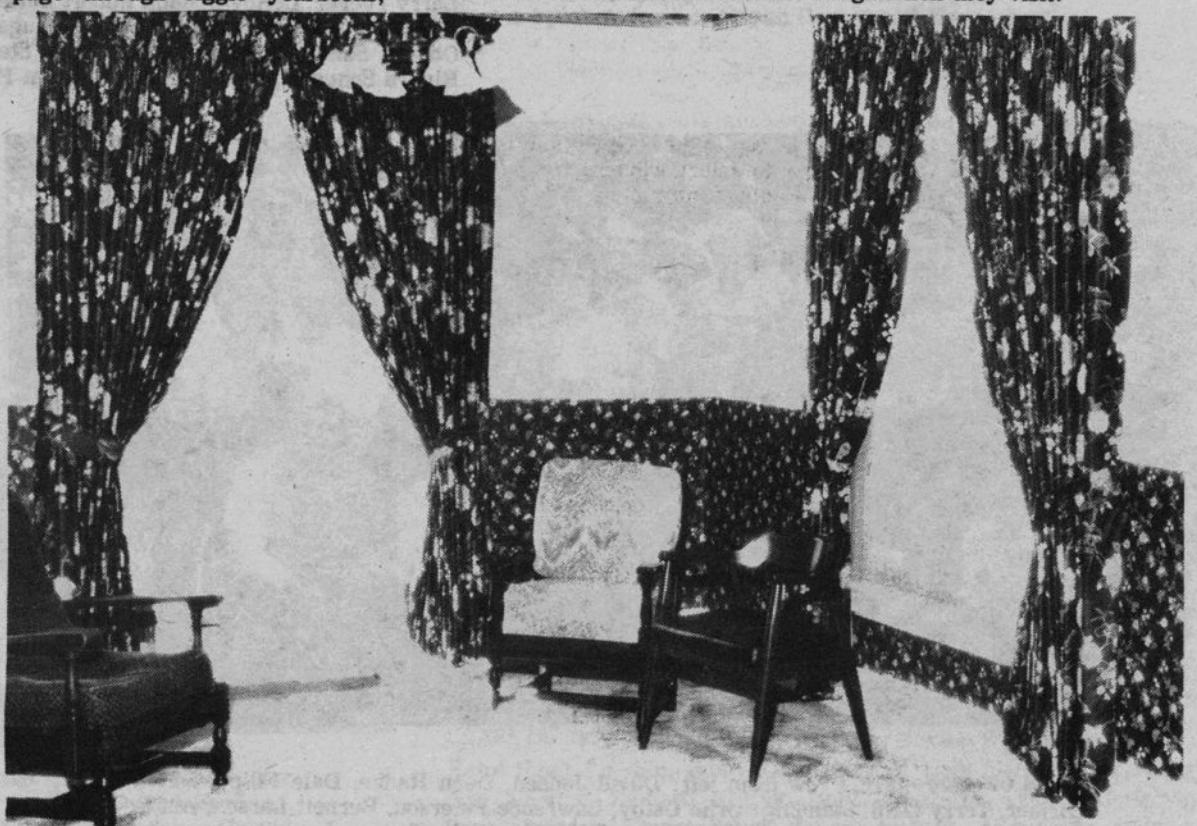
Alumnae designs alumni center gift

Harriet Balstad Hanson '49 has pledged to use her hobby to create an alumni center gift. Mrs. Hanson of Grand Forks, ND is working with other needlework enthusiasts to design twelve original needlepoint patterns which will be used to stitch seat cushions for the dining room chairs in the White House.

She anticipates the patterns will each boast a different Minnesota wild flower stitched on a coordinating background. Mrs. Hanson

is looking for twelve alumni who will dedicate themselves to completing the project before the 1985 summer reunion in June. The materials will be purchased and mailed to those wishing to help stitch. There is no cost involved for alumni volunteers.

For more information on the needlework project contact Mrs. Harriet Hanson, RR 1, Box 181, Grand Forks, ND 58201; or the alumni office at UMC.



The living-dining room is a formal setting depicting the colors and mood of the 1920's era. These chairs and two others that match have been used in UMC offices since the NWSA closed. They are now permanent furnishings in the alumni center.

White House Alumni Center Restoration Committee Members

Clifford Dahlsad '40
Moorhead, MN

Allan Dragseth '57
Eldred, MN

Joan (Phillips) Flaatt '41
Grand Forks, ND

Marjorie (Ofstedahl) Hanson '45
Thief River Falls, MN

Herschel Lysaker
Crookston, MN

Berneil Nelson '42
Crookston, MN

Sherry (Hoeft) O'Gorman '69
Crookston, MN

Wayne Omundson '74, '76
Fosston, MN

Krista (Boen) Proulx '75
Crookston, MN

Keith Ramberg '68, '70
Crookston, MN

Charles Samuelson '43, chrm.
Thief River Falls, MN

Dick Widseth '49
Crookston, MN

B. E. Youngquist
Crookston, MN

The 1985 summer reunion is scheduled for Saturday, June 29. The reunion will honor the classes of 1915, '20, '25, '30, '35, '40, '45, '50, '55, '60, and '65. If you would like to help as a class leader contact Bernell Nelson '42 at UMC.



CLASS OF 1939— Kneeling from left: Faville Moen, Walter Schulz, Elwood Gustafson, Harlan Ellinger, Talbert Koppang, Leonard Hildebrand, Marion Erlandson. Standing: Dean Younggren, Delanor Johnson Wittman, Donald Carlson, Jean Baird Olson, Chester Anderson, Anna Jensen Shaide, Dorothy Larson Billberg, Clifford Manning, Glendora Krostue Knutson, William Gatheridge, Elmer Ruebke, Edith Peterson Cornelius, Frances Pearson, Doris Peterson, Nannie Germunson Hillesland, Edith Ramberg Nabben, Dorothy Kliner Moland, Donald LaPlante, Glenn Barry, Leona Shimek Anderson.

Honored classes boost reunion attendance to record number



CLASS OF 1964— Kneeling from left: Francis Bellamy, Stuart Morgan, Gary Pedersen, Dale Demers, Richard Bellamy, Bob Peck, Sid Stivland, Marvin Schneider, Lyle Wilkens, Larry Tucker, LeRoy Opdahl, Robert Bergeron, Tom Lundgren, Gary Hangsliken, Donald Krogstad, Michael Donahue, Dean Slininger, Harvey Gabbert, Wayne Odegaard, Francis Obowa, Sandy Carlson Jensen, Chuck Steer, Claudia Hanson Deery, John Drees, Judy Rivard Schuster, Alan Dahnke, William Pahan, Vern Cleveland, Harlan Merkens.



CLASS OF 1959— Front row from left: David Jensen, Dean Radke, Dale Filipy, David Schriener, Terry Dahl. Standing: Orlin Ostby, Lawrence Peterson, Burnett Larson, Anton Kraft, Kenny Mosolf, Art Brandli, Phil Grage, Vicki Kosmatka Shriner, Lynn Larson, John Omdahl, Curtis Carlson, John Schol, Jim Hutton.



CLASS OF 1949— Front from left: Warren Hamrick, Donald Simmons, Marvie Vesledahl Stromstad, Rodney Webster, Diane Swenson Brown, Margie Ophus Mjelde, Manvel Green, Clarice Thuren Widseth, Jeanette Peterson Lysaker, Charles Vind, Herschel Lysaker. Back row: Wilfred Taus, Dick Widseth, Allan Magnusson, Dawn Rioux.



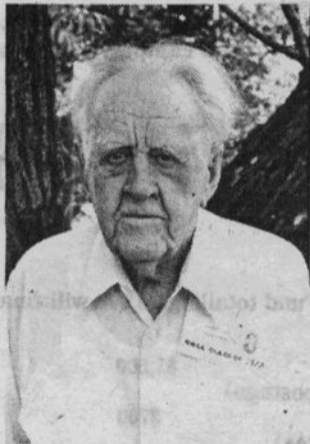
Marlys Love Finkenbinder '54 of Crookston was elected secretary-treasurer of the NWSA Alumni Association Board of Directors at the summer reunion. She succeeds Marjorie Ophus Mjelde '49 of Erskine, MN.



CLASS OF 1934— Front row from left: Jerome Molacek, Erling Olson, Karine Opdahl Nornes, Esther Haugo Seeger, Gladys Quantock White, Fern Field Christopher, Helen Krogstad Clementson, Helen Carlson Lee, Lois Sargent Smith, Roy Smith. Back row: Floyd Tack, Clarence Widner, Gilbert Gunderson, Edson Washburn, Frederick Egeland, Paul Billberg, Clarence Clementson, Clarence Skaren, Glenn Ellinger, Jerome Wermerger.



CLASS OF 1924— Left to right: Carl Larson, Ebenhard Gandrud, Stella Sorenson Larson, Alfred Voxland, Ruth Hermanson Ludwig, Gladys Rice Landre, Hector Hanson, Bert Johnson, Orlie Hofdahl, Sylvester Adamski, Howard Balk, Melvin Eidsmoe.



CLASS OF 1913— Oscar Lee.



CLASS OF 1929— From left: Winton Knutson, Elmer Johnson, Bob Larson, Evelyn Bain Erickson, Esther Gibbons Gendrud, Jette Gulleckson, Mabel Fletcher Rondall, Harold Cordes, Hazel Stephenson Halverson, Stanton Gandrud, Arville Anderson, Evelyn Bierbaum Peterson, Sanna Hanson Brovold, Filmer Johnson, Olga Johnson Konickson, Ted Peet, Wilfred Knutson. Attending reunion but not pictured: Alice Naplin Dumas and Edna Ross Hanson.



CLASS OF 1944— Sitting from left: Grant Peterson, Leon Kruger, Rosemary Altepeter LaPlante, Dick Bonner. Standing: Lillian Qualley Schuett, Bernadine Nesland Breiland, Marian Sargent Barron, Evelyn Brandli Berry, Adeline McKibbon Blomquist, Gerald Burke, Edna Paulerud Sargent, Donald Krueger, Florence Urbaniak Kuznia, Helen Milner Bahr, Larry Breen, Kenneth Price, Oliver Sorenson, Nelvin Thormodson, Arlo Scholin, Clifford Anderson, Clara Stromstad Johnson, Calmer Johnson.



CLASS OF 1954— Seated from left: Mary Benson Wagar, Mary Lou Baird Hegg, Lorraine Zipoy Love, Evelyn Holy Bancroft. Standing: Jim Winkler, Richard Kluzak, Robert Hoekstra, Donald Hettervig, Dean Skjerven, Grant Satre, Wayne Mosher. Attending reunion but not pictured: David Viker.

Over 700 farmers and agribusiness leaders attended the annual Crops and Soils Day at the Northwest Experiment Station on July 18. They toured the facilities and examined new research varieties of wheat and barley.



Former faculty gather for reunion

Former faculty from the Northwest School of Agriculture traveled from across the country to attend the 1984 reunion where they were honored in a special reunion gathering.

Banquet tables reserved for the group quickly filled to capacity. Those attending the reunion included (NWSA years in brackets):



Olaf and Dora Soine were among more than twenty former faculty attending the NWSA reunion.

- Bruce Beresford, Crookston, MN (1947-68)
- Don Berquist, Adams, ND (1963-68)
- Myrtle Brown, West St. Paul (1954-68)
- Roger Diehl, Hillsboro, ND (1963-68)
- Homer Fausch, Mora, MN (1947-56)
- Bob Heckman, Conroe, TX (1960-68)
- Ruth Kruta, Warren, MN (Jaroslav 1954-60)
- Herschel Lysaker, Crookston, MN (1944-66)
- Jeanette Peterson Lysaker, Crookston, MN (1945-48)
- Ruth Menzhuber, Crookston, MN (Bill 1955-68)
- Gene Miller, Crookston, MN (1954-68)
- Rod Mosher, Beltrami, MN (1960-67)
- Harlene Hagen Overgaard, Roseville, MN (1962-65)
- Evelyn Peterson, Elmhurst, IL (1953-58)
- Bertha Reirsgord, Crookston, MN (Erwin 1944-68)
- Olaf Soine, Brooklyn Park, MN (1945-68)
- Ralph Titus, Stewartville, MN (1958-66)
- Bernie Youngquist, Crookston, MN (1956-68)

Gene Miller, former NWSA instructor and current Northwest Experiment Station agriculture engineer, coordinated the faculty reunion. He received letters from Joe Mazzitelli of Grand Rapids, MN (1951-68); Diedrich Reimer of Curtistown, HI (1955-64); and Charles Whiting of Estes Park, CO (1952-61) expressing interest in the reunion but sending their regrets at being unable to attend.



Betty and Diedrich Reimer toured the campus during their July visit.

Director identifies role of association in 1985

The Northwest School of Agriculture Alumni Association is an ongoing network of former students and faculty. With offices and staff on the University of Minnesota—Crookston campus, it is a permanent link to the memories and contribution of the NWSA to education in northwestern Minnesota.

Each year the association's board of directors strives to improve programming and services for Aggie alumni. Lowell Larson, UMC director of alumni and development, outlines the role of the association and its 6,000 members in this interview.

Why does there continue to be an alumni association for the Northwest School of Agriculture?

The NWSA Alumni Association is a vehicle for maintaining contact with former students of the school. The association activities provide opportunities for alumni to gather, to reminisce about school days, and to retain traditions established at the NWSA.

A second purpose of the association is to benefit the ongoing programs at the University of Minnesota—Crookston by updating alumni about current research and technology, and offering the opportunity to financially contribute to that progress.

How do Aggie alumni become involved in the association?

Alumni who read this issue of the Aggie and complete and return the class notes card have taken the first step in involvement. The Aggie is the prime vehicle used to keep alumni informed about events, accomplishments by other alumni, and information about the UMC Technical College and Experiment Station. The newsletter is published twice a year.

The annual summer reunion honoring anniversary-year classes and the community dinners held during the winter months are other enjoyable ways to get involved. Besides visiting with former classmates these events are also sources of information about alumni gatherings and projects.

Hundreds of Aggie alumni choose to get involved through contributions to the Alumni Annual Fund. Their gifts fund the alumni association, UMC campus projects, and student scholarships.

Since the association's board of directors is made up of alumni working for all other alumni, this is an important level of involvement. The board meets three times a year to plan programming, recognition of alumni, and the association budget.

What is the budget for 1985?

Contributions to the Alumni Annual Fund totalling \$3,000 will finance the following budget items:

Aggie newsletter (two issues, printing, postage)	\$1,500
Summer reunion (mailing, awards, photos)	\$700
Winter dinners (mailing, prizes)	\$300
Computer services, labels	\$500
TOTAL	\$3,000

How is other Annual Fund money used?

All NWSA alumni contributions are placed in an independent fund and personally acknowledged. Gifts may be designated for specific purposes, such as scholarships or White House Alumni Center restoration. These funds will be used for the requested purposes.

Unrestricted gifts or those designated for the alumni association are appropriated by the board of directors. This is the source of the \$3,000 budget money. The board will determine how much of the remaining money is targeted for UMC scholarships, alumni events, and special association projects. There is a complete report on 1983-84 Annual Fund contributions and designations in this Aggie issue.

Where does the White House Alumni Center fit into the association?

The restoration of the White House into a functional and historic center is a special project of both the NWSA and UMC Alumni Associations. The center is dedicated to serving alumni when they visit campus. It will preserve the history and traditions of the schools through maintenance of alumni records, memorabilia, and information.

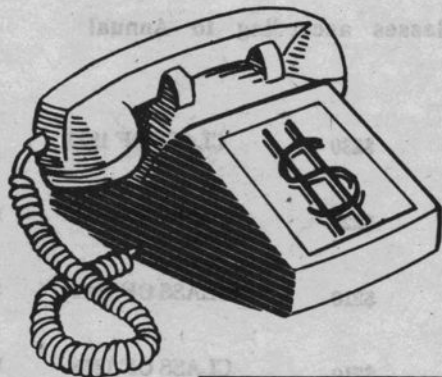
The former home of NWSA superintendents, it is structurally sound and is physically maintained by the University of Minnesota—Crookston. However, the restoration and remodeling of the 1907 building is a major project for the associations requiring \$70,000 to complete.

Nearly \$10,000 in alumni gifts have already been received and spent on White House remodeling. The project is coordinated by a restoration committee involving NWSA and UMC alumni (see names page 3). They are supported by the boards of directors from both associations and the alumni staff.



Clifford Dahlsad '40 of Moorhead, MN is the most recent Presidents Club member. He has designated his 1984 donation for use in the alumni center renovation. Dahlsad is a member of the White House Restoration Committee.

Annual Fund contributions aid UMC, alumni groups



Contributions to the 1984 Annual Fund by Northwest School alumni will have a major impact on the 1985 academic year, and beyond. Your support of UMC scholarships and instructional equipment will benefit deserving students and insure continued quality education at the University of Minnesota—Crookston. Donations to the NWSA Alumni Association are used for publishing the AGGIE, promotion of the winter dinners, and providing office and association supplies.

In 1985 the financial needs will increase. The Alumni Association will bear greater responsibility for office needs and the costs of developing the White House Alumni Center. Educational aid and instructional material requirements will remain a top priority among UMC supporters.

UMC and the NWSA Alumni Association Board of Directors thanks each of you for your generous contribution. Please respond again when you are called during the 1985 Annual Fund Campaign.

CLASS OF 1913

Oscar Lee

CLASS OF 1916

Randolph Saugstad

CLASS OF 1918

William Austin

CLASS OF 1920

James Felber
Ellen Ferguson (Ahlm)
Walter Sprung

CLASS OF 1921

Sophie Narveson (Krbechek)
Myrtle Whittenberg (Erickson)

CLASS OF 1922

Una DeBoer (Briden)
Jennie Hvidsten (Peterson)

CLASS OF 1923

★ Joe Dean (Joseph Lundin)
Adele Hallameck (Raymond)
William Hoper

CLASS OF 1924

Sylvester Adamski
★ Carl Larson
Stella Larson (Sorenson)
Gladys Landre (Rice)
Ruth Ludwig (Hermanson)

CLASS OF 1925

Mildred Dunn
★ Cora Grove (Thompson)
Chester Johnson
Amy Love (Onneland)
Benneth Sharpe

CLASS OF 1926

Lawrence Letnes
★ Wesley Sheldrew

CLASS OF 1927

Arnold Aakre
Ralph Hamrick
Tilmer Johnson
★ Randolph Ostlie
Olaf Stenborg
Bessie Swanson

CLASS OF 1928

Ethel Beman (Harris)
★ Helen Jackson (Hovland)
George Lee

CLASS OF 1929

Harold Cordes
Alice Dumas (Naplin)
Earl Ellinger
★ Gordon Ellinger
Elmer C. Johnson
Harvey P.H. Johnson
Wilfred Knutson
★ Robert W. Larson
★ Ted Peet

CLASS OF 1930

Alvin Degerness
Lawrence O. Peterson
Evinde Richwalski (Koppang)
Annette Rother (Rots)
Selma Waldal

CLASS OF 1931

John Anderson
Clinton Donley
Clifford Kroulik
Donald McCall

Carter Mortenson

Harold Olson
Hazel Perras (Noyes)
Arlene Rinde (Hill)
George Schultz
Paul Sorenson
Arthur Sundrud
★ Arnold Wolden

CLASS OF 1932

★ Pearl Duke (Henry)
Edwin Myers
Esther Petsch (Torgerson)
★ Edwin Widseth

CLASS OF 1933

Richard Holmgren
Harvey Nielsen
Rose Salo (Naplin)
John Stromstad

CLASS OF 1934

Merl Jenkins
Lucy Llywelyn (Harris)
Jerome Molacek
Clarence Skaren
Lois Smith (Sargent)
Clarence Widner
A. Carol Willert (Olson)

CLASS OF 1935

Kenneth Albertson
Glenn Ellinger
Helen Lee (Carlson)
Clarence Stromberg
Edson Washburn

CLASS OF 1936

Erling Carlson
Martin Chilson

CLASS OF 1937

★ Morris Dahl
Glennie Iverson
Leona Kellerman
Lucile Kildal (Hedlund)
Clinton Klementson
Alta Loy (Swenson)
Yvonne Magnusson
Myra Shannon (Hoiseth)

CLASS OF 1938

Richard Johnson
Delsie Lofton (Filipi)
★ Edmund Rydeen

CLASS OF 1939

Chester Anderson
Mabel Baggett (Brandli)
★ Donald Forfang

Elwood Gustafson

Mannie Hillesland (Germunson)
Rosaire Montcalm
Frances Pearson
Elmer Ruebke
Anna Shaide (Jensen)

CLASS OF 1940

Harold T. Anderson
★ Clifford Dahlsad
John Edman
Opal Hedberg (Mykleby)
Raymond Hoppe
Orval Johnson
John Lamberson
Newall Mostad
Don Ste. Marie

CLASS OF 1941

Robert Boucher
Morris Brostrom
Harry Christiansen
June Christenson (Naplin)
JoAnne Dewitt (Biermabuer)
Morris DuFault
Verne Green
Camilla Johnson (Ecklund)
Lorraine Johnson (Capistran)

CLASS OF 1942

★ Alton Knutson
Lionel Landby
Leroy Larson
Orlo Lintvet
★ Clifford Nyro
Betty Parsell (Halliday)
Clarence Sargent
★ Arnold Torkelson

CLASS OF 1942

Robert Anderson
★ Dale Barry
Joseph Boushey (Bushee)
Donald Hanson
★ Donald Milner
★ Berneil Nelson
Ernest Nelson
Raymond Schafer
Berget Taintor (Torkelson)
★ Leonard Yutzenka

CLASS OF 1943

Harold Aasland
Gunhild DuChamp (Nesland)
Darwin Ferrier
★ Marjorie Hanson (Ofstedahl)
Robert LaPlante
Joseph Lee
Orville Pearson
Violet Pready (Lindholm)
Eleanor Snustad (Olson)
Edmund Sczepanski

CLASS OF 1944

Clifford Anderson
Orvis Engelstad
Calmer Johnson
Florence Kuznia (Urbaniak)
Kenneth Price
Dale Pulkrabek
Lillian Schuett (Qualley)
Gene Sondreal
Alden Vesledahl

CLASS OF 1945

Melvin Capistran
George Lee
Elvin Moran
Roger Ophus
Grant Peterson

CLASS OF 1946

★ Perry Haglund
Reuben Hanson
Raymond Johnson
Gerhard Ross
★ Conrad Zak

CLASS OF 1947

★ Avis Listul (Anderson)
Jeanette Bedard (Bergh)
Merle Hennes
Melburn Hoeft
Joyce Lundquist (Hunstad)
Robert Samuelson

CLASS OF 1948

Edward Pavek
LeRoy O. Peterson
Duane Truhn
Ada Wagstrom (Torgerson)

CLASS OF 1949

Darrell Fortin
Beatrice Frolander (Carlson)
Kathryn Hall (Kowaliuk)
James Holm
Elizabeth Lapp
Carroll Lindstrom
Andrew Nielsen
Steven Pavlik
Rodney Webster

CLASS OF 1950

Carrol Flesche
★ Lyle Kasprick
Janet Melgard (Schaefer)
Roger Nelson
★ Gordon Thompson

TOTAL \$11,200

UNRESTRICTED	\$4,475
WHITE HOUSE ALUMNI CENTER	\$3,305
ALUMNI SERVICES	\$1,890
SCHOLARSHIPS	\$1,530
TOTAL	\$11,200

UMC enrollment projections for the 1984-85 academic year will remain similar to recent years, according to John Bywater, director of admissions and financial aid. Eighty percent of UMC students come from within 100 miles of Crookston.



CLASS OF 1951

Bruce Bohnsack
Dorothy Grotte (Didrikson)
Bergit Perry (Johnson)
Kenneth Rue
Lillian Tolpingrud (Friberg)

CLASS OF 1952

Robert Dahl
Ralph Tucker

CLASS OF 1953

Marian Cerkowniak (Pederson)
Lowell Hamrick
Darrell Hursman
Ronald P. Olson
Dale Rokke
Ralph Short

CLASS OF 1954

Marshal Guntzburger
Neil Hegg
Bruce Kramer
Charles Jenson
Wayne Mosher
Ronald Ricard

CLASS OF 1955

David Boman
Wallace Eftfield
Glen Finkenbinder
★ Gordon Fillipi
Ronald Fortier
G. Edward Grove
John Hoper
Wendell Kelm
Spencer Larson
● Wesley Motschenbacher
James O. Olson
Bernice Rosett (Jones)
Kenneth Sanders
Arnold Skeie
★ Paul Suda

CLASS OF 1956

Larry Solberg

CLASS OF 1957

vernion Askegard
Allan Brandli
Bruce Chapman
★ Allan Dragseth
Terrance Hovet

CLASS OF 1958

Lernard Ackerman
Arlene Curtis (Bergh)
John Ecklund
Donald Hoeger
Daryl Krogh
Robert Larson
Duane Loven
Luke Maidment
Esther Molskness
★ Les Nielsen
James W. Peterson

CLASS OF 1959

Kenneth Beauchane
Wayne Boucher
Terry Dahl
Frederick Eisenhardt
Ronald Hiller

CLASS OF 1960

Larry Griffin
Wallace Philipp
Clayton Verke

CLASS OF 1961

Leeila Bina (Tvinnereim)
Jerry Domres
Cecil Dusek
Harley Grefsheim
Stanley Haugen
Gary Hoper
Nancy Diamond (Muir)
Allan Sandberg
Deane Scharmer
Janice Svendsgaard (Steinhauer)

CLASS OF 1962

Kay Edwards (Haugen)
Richard Gatheridge
Mark Hoper
Daniel Pederson
John Sannes

CLASS OF 1963

Norman Iacono
Darrell Novacek

CLASS OF 1964

Dale DeMers
William Gatheridge
Patrick Larson
Allan Wagner

CLASS OF 1965

William Baldwin
Stanley Overgaard
Daniel Wallace

CLASS OF 1966

Courtney Abel
Janet Dutcher (Klava)
Daniel Lundberg
Wayne Pedersen
James Wallace

CLASS OF 1967

Thomas Banken
Mikael Bye
Nancy Rauser (Porter)
Royal Rivard
★ Robert Schumacher

CLASS OF 1968

Steve Boman
Donald Chisholm

FACULTY/STAFF/FRIENDS

★ Lillie Christiansen
+ Theodore Hass
+ Marlys Klovstad
+ Lillian Kositzke
★ Lowell Larson
+ Audrey Lepisto
+ Laura Lyford
+ Sue Carol McQueen
+ Jerome Mulvaney
+ Beverly Perkins
+ Alfred Stedman
+ Charles Winter

★ Century Council Members
● Matching Gift
+ Records Incomplete

TOTAL NUMBER OF NWSA
1983-84 DONORS - 290

Annual Fund rollcall

The following list identifies the order of classes according to Annual Fund donations over \$50.

CLASS OF 1940	\$1,285	CLASS OF 1939	\$230	CLASS OF 1938	\$135
CLASS OF 1942	\$1,020	CLASS OF 1937	\$225	CLASS OF 1954	\$130
CLASS OF 1941	\$695	CLASS OF 1943	\$210	CLASS OF 1962	\$125
CLASS OF 1955	\$600	CLASS OF 1961	\$210	CLASS OF 1965	\$125
CLASS OF 1929	\$520	CLASS OF 1924	\$204	CLASS OF 1926	\$120
CLASS OF 1958	\$385	CLASS OF 1967	\$200	CLASS OF 1966	\$110
CLASS OF 1947	\$365	CLASS OF 1927	\$195	CLASS OF 1945	\$95
CLASS OF 1931	\$315	CLASS OF 1928	\$175	CLASS OF 1951	\$90
CLASS OF 1946	\$300	CLASS OF 1949	\$170	CLASS OF 1957	\$90
CLASS OF 1932	\$280	CLASS OF 1925	\$170	CLASS OF 1935	\$85
CLASS OF 1948	\$265	CLASS OF 1934	\$160	CLASS OF 1930	\$75
CLASS OF 1944	\$264	CLASS OF 1953	\$140	CLASS OF 1960	\$55
CLASS OF 1933	\$245	CLASS OF 1959	\$140	CLASS OF 1964	\$55
CLASS OF 1950	\$235	CLASS OF 1923	\$135	CLASS OF 1920	\$51
				FACULTY-STAFF-FRIENDS	\$635



Darwin '43 and Florence Ferrier of Pitt, MN helped alumni order color photographs of their class. The group photos were taken on the mall prior to the evening banquet.