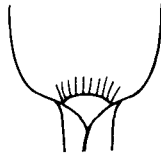


# GRASSY WEED SEEDLING IDENTIFICATION KEY

Beverly Durgan  
Extension  
Agronomist  
Weed Science



LIGULE HAIRY

SHEATH DISTINCTLY FLAT

SHEATH ROUND TO SOMEWHAT FLATTENED



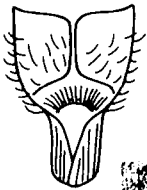
BLADES WITH Long Hairs near base above  
- Collar Margin  
- Sparsely Hairy  
- Sheath Without Hair

BLADES WITHOUT Hair; Collar and Sheath Margins Sometimes Hairy

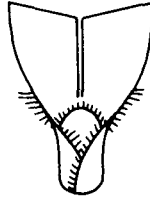
BLADES HAIRY Sheaths and Collar Margins Sometimes Hairy

BLADES WITH LITTLE OR NO HAIR Sheaths and Collar Margins Sometimes Hairy

YELLOW FOXTAIL

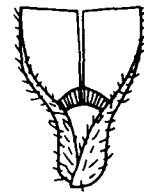


FIELD SANDBUR



SHEATH Margins Hairy

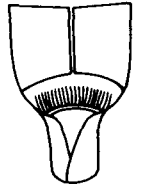
GREEN FOXTAIL



SHEATH Margins with Little or No Hair, Sheaths and Slick & Shiny

Midrib White & Prominent Below on Older leaves

FALL PANICUM

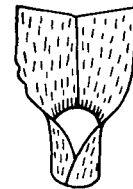


BOTH BLADE MARGINS ENTIRE

One Margin Blade Crinkled or Waxy

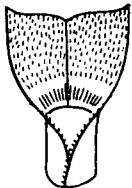
Very Large Flattened Seed

WOOLLY CUPGRASS



BLADES HAIRY On Above Surface Only Short Hair (fuzz)

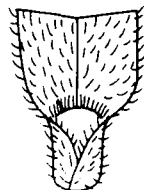
GIANT FOXTAIL



BLADES HAIRY On Both Surfaces

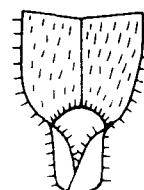
Midrib White and Prominent Below  
Small Seed Very Hairy

WITCHGRASS



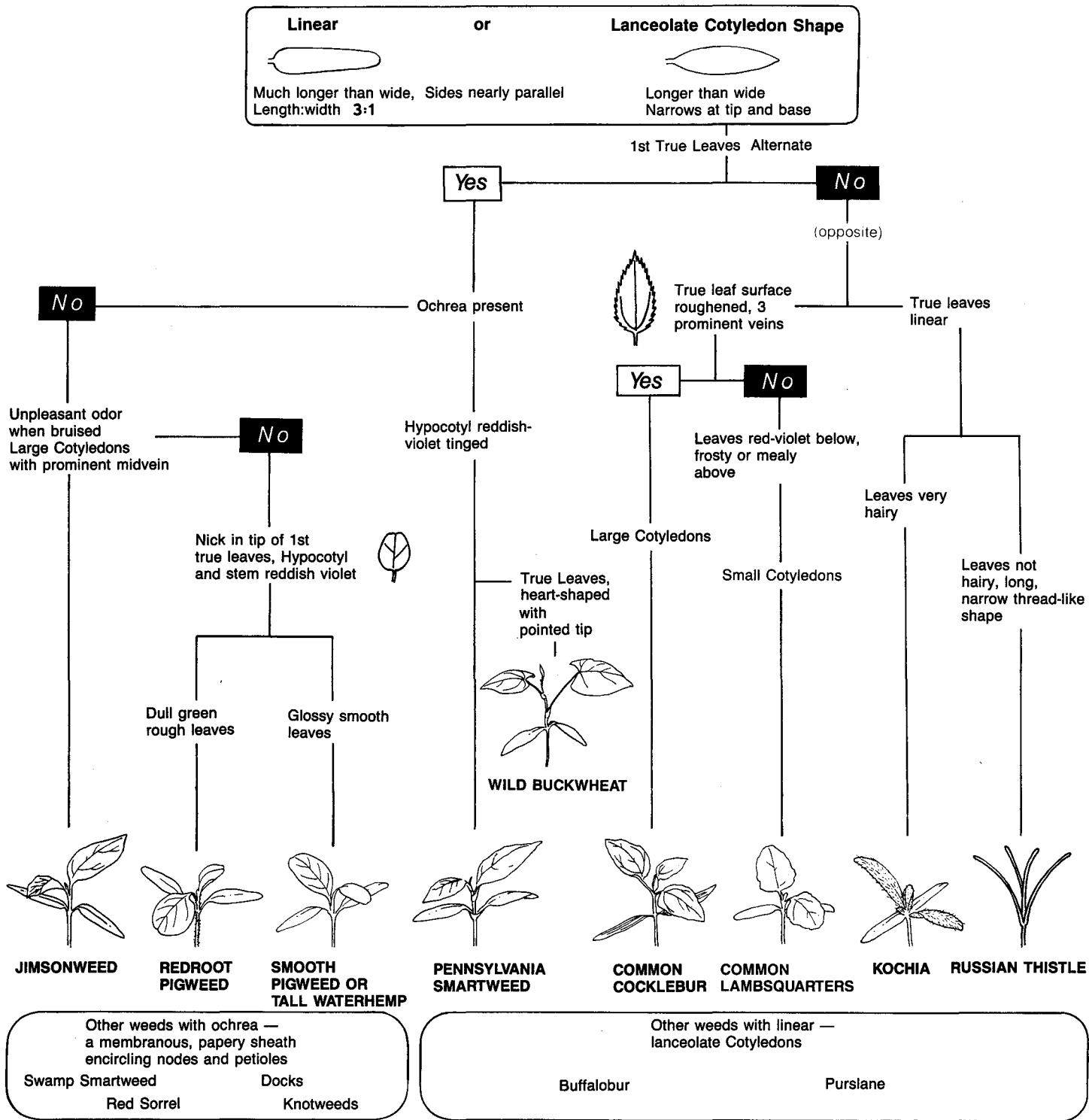
Sheath Hairs Stick Straight Out  
Large Shiny Seed Black to Olive Green in Color

WILD PROSO MILLET

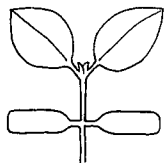


UNIVERSITY OF MINNESOTA  
DOCUMENTS  
APR 15 1968  
ST. PAUL CAMPUS  
LIBRARIES

# BROADLEAF WEED SEEDLING IDENTIFICATION KEY

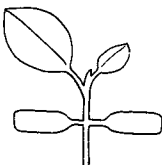


## TERMINOLOGY



### Opposite Leaves

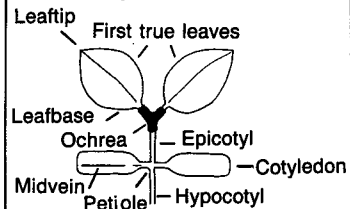
Attached at same node on opposite sides of stem. Leaves at the same node are of similar size.



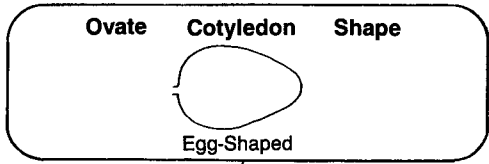
### Alternate Leaves

One leaf per node. Leaves increase in size from top to bottom along the stem.

### Vegetative Broadleaf Plant Parts



# BROADLEAF WEED SEEDLING IDENTIFICATION KEY

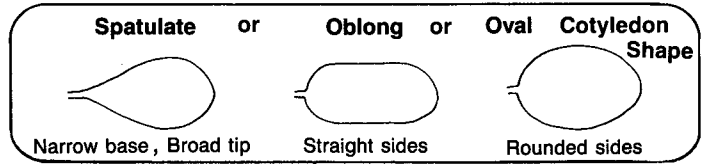
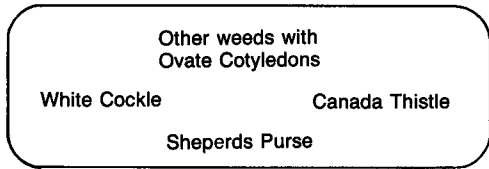


1st True Leaves Alternate

**Yes**

Often purple beneath

**BLACK NIGHTSHADE  
HAIRY NIGHTSHADE**



1st True Leaves Opposite

**Yes**

1st True Leaves Lobed  
Cotyledons with purple spots on margins

**Yes**

5-Lobed



**COMMON RAGWEED**

**No**

Rough leaf surface  
3 prominent veins



Large Cotyledons

**ANNUAL SUNFLOWER**

3-Lobed

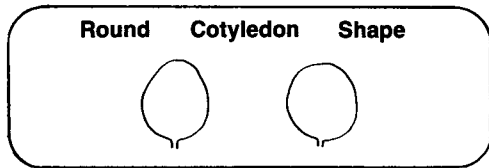


**GIANT RAGWEED**

Other weeds with Spatulate,  
Oblong or Oval Cotyledons

Perennial Sowthistle

Jeruselem Artichoke



1st True Leaves Alternate

**Yes**

True leaves velvety with short hairs



**VELVETLEAF**

**No**

True leaves may be sparsely hairy  
3rd and subsequent leaves deeply lobed

**Yes**

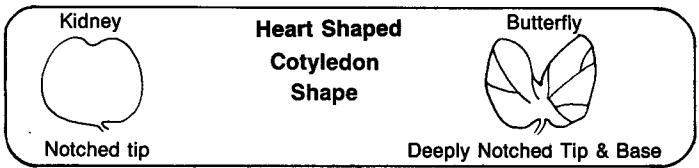


**VENICE MALLOW**

Other weeds with round Cotyledons

Field Pennycress

Marshelder



1st True Leaves Alternate



**WILD MUSTARD**

Other weeds with Kidney Cotyledons

Field Bindweed

Hedge Bindweed

# GRASSY WEED SEEDLING IDENTIFICATION KEY

