

Vegetable Varieties *for Minnesota*



"Moreton Hybrid Tomato"

BY O. C. TURNQUIST

UNIVERSITY OF MINNESOTA
Agricultural Extension Service
U. S. DEPARTMENT OF AGRICULTURE

Vegetable Varieties

The selection of adapted varieties for Minnesota is one of the simplest and yet one of the most important steps to a successful vegetable garden. Not only are the newer introductions better producers but many are disease resistant and of better quality.

This folder summarizes information concerning vegetable varieties tested at various locations in Minnesota in 1956. These tests were conducted by the Agricultural Extension Service in cooperation with both home and commercial gardens around the state. The map gives the location of the 1956 test plots.

Included in the folder is a suggested list of tested varieties that have been found to be suitable for Minnesota. Special emphasis is given to varieties suitable for freezing. It should be noted that there may be other acceptable varieties not on this list because they have not yet been tested or are not generally available from seedsmen. It is only after several years of testing that we can judge the dependability of a variety for a certain area.

All varieties discussed in this folder are available from seedsmen, but no one seed company will have all of them.

Varieties Tested in 1956

SNAP BEANS

Seminole—A new mosaic-resistant green bean, maturing later than Tendergreen or Topcrop in Minnesota. Pods are long, straight and well-rounded to the tips. Although acceptance was good, cooperators rated it lower than the other two varieties tested.

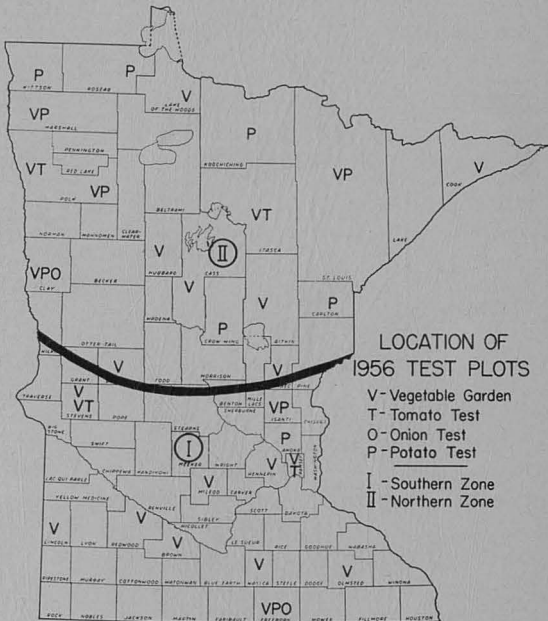
Tendergreen Resistant—A green variety that appears to be increasing in popularity with both home and market gardeners. It is mosaic-resistant and appears to be dependable in producing good yields of high-quality beans in Minnesota gardens. It is excellent for freezing.

Topcrop—Another disease-resistant variety which was scored as earliest of the varieties tested in 1956. The round, straight pods appear to be concentrated and set high on the plant, permitting easy picking.

CABBAGE

Greenback—A new yellows-resistant variety, maturing about 7 to 10 days later than Badger Market. The heads are medium-sized, very tight, and solid. The color is a dark, fresh-looking green. In the few locations where it was tested it appeared to be quite promising.

Badger Market—An early cabbage with a resistance to yellows and mosaic. The heads are uniformly small and compact. When mature, the heads appear to resist splitting after heavy rains. It is especially well suited for small gardens.



CARROTS

Gold Pak—A new variety with long, slender, tapering roots that are deep orange inside and out. It is later than Nantes and it appears to perform best where the soil is loose and deeply worked.

Nantes—One of the most dependable and sweetest carrots grown. It is early and reaches usable size before other varieties. The roots are long, cylindrical, and stump-rooted. Cooperators rated it high in performance again this year.

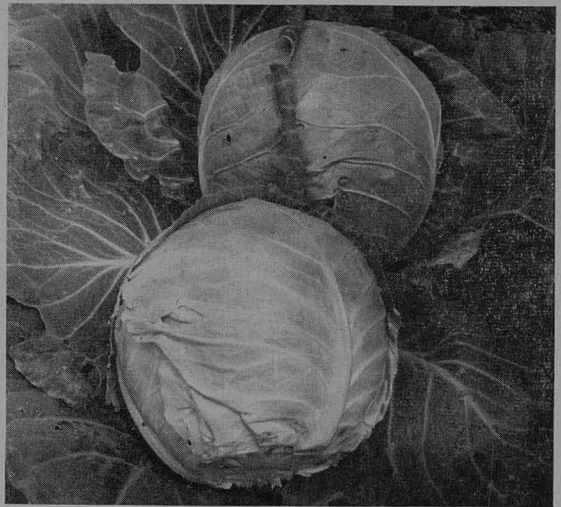
CUCUMBERS

Surecrop—A true F₁ hybrid that resists mosaic and produces good yields of uniform slender fruits that are blunt-ended. It rated high not only for slicing but also for pickles.

Hycrop—Another F₁ hybrid developed primarily for pickles. Fruits are blocky and 5 to 6 inches long. Reports indicate that it produced good yields of fair quality, but the fruiting period appeared to be shorter than Surecrop.

LETTUCE

Salad Trim—A new leaf lettuce with a purplish-red color and large crinkly leaves. Most cooperators gave it only a fair quality rating. It is something different and appears to be more of a novelty item.



Greenback Cabbage

Varieties Suggested for Minnesota Home Gardens

ASPARAGUS—Washington,* F₁ Hybrid*
 BEANS, DRY OR FIELD—Great Northern, Michelite, Red Kidney
 BEANS, LIMA—Triumph,*† Henderson,† Burpee's Improved*†
 BEANS, POLE—Kentucky Wonder*
 BEANS, GREEN BUSH—Topcrop,* Tendergreen,* Contender,
 Wade*
 BEANS, YELLOW BUSH—Cherokee,* Pencil-Pod Black Wax,*
 Brittle Wax*
 BEETS—King Red,* Perfected Detroit,* Early Wonder
 BROCCOLI—Italian Green Sprouting (Calabrese), Waltham 29*
 BRUSSELS SPROUTS—Long Island Improved*
 CABBAGE—*early*—Golden Acre, Wisconsin Golden Acre (yel-
 lows resistant), Resistant Detroit (yellows resistant), Red
 Acre; *late*—Hollander Short Stem, Penn State Ballhead,
 Danish Ballhead, Wisconsin Hollander (yellows resistant)
 CABBAGE, CHINESE—Chihili, Michihili
 CARROTS—Nantes,* Royal Chantenay,* Danvers Half Long,
 Imperator*
 CAULIFLOWER—Snowball,* Super Snowball*
 CELERY—Golden Self Blanching, Utah
 CORN, SWEET—*early*—Golden Rocket, Sugar and Gold*; *mid*-
season—Golden Freezer,*† Golden Cross Bantam*†
 CUCUMBERS, PICKLING—Chicago Pickling, York State Pickling,
 Mincu
 CUCUMBERS, SLICING—Burpee Hybrid, Hybrid C, Marketer
 EGGPLANT—Black Beauty,*† New Hampshire*
 ENDIVE—Green Curled
 KALE—Dwarf Curled*
 KOHLRABI—Early White Vienna,* Purple Vienna*
 LETTUCE, HEAD—Pennlake, Premier Great Lakes
 LETTUCE, LEAF—Grand Rapids, Black Seeded Simpson, Slobolt

MUSKMELON—*early*—Minnesota Midget,‡ Far North; *mid*sea-
son—Iroquois,* † Minnesota Honey,† Delicious 51†
 ONION—Early Yellow Globe, Brigham Yellow Globe, Utah Sweet
 Spanish
 ONION, PERENNIAL—White Welsh, Egyptian
 PARSLEY—Dark Moss Curled
 PARSNIPS—Improved Hollow Crown,* All American*
 PEAS—*early*—Little Marvel,* Laxtons Progress,* Burpeana Early
 Dwarf*†; *mid*season—Wando, Lincoln,* Dark Seeded Perfec-
 tion*
 PEPPERS—Sunnybrook, Wisconsin Lakes, Calwonder,† Long Red
 Cayenne†
 POPCORN—Minhybrid 250†
 POTATOES—*early*—Red Warba, Waseca, Irish Cobbler; *mid*sea-
son—Cherokee, Kennebec, Red Pontiac
 PUMPKIN—Sugar Pie, Jack-o-Lantern
 RADISH—Cherry Belle, Early Scarlet Globe, Comet, Cavalier,
 White Icicle
 RHUBARB—Valetine,* MacDonald Crimson,* Chipman's Canada
 Red*
 RUTABAGA—Laurentian
 SPINACH—Bloomsdale Long Standing,* America,* New Zealand*
 SQUASH, SUMMER—Black Zucchini,* Early Prolific Straightneck*
 SQUASH, WINTER—Buttercup,* Hybrid R,* Greengold,* Table
 Queen, Butternut*
 SWISS CHARD—Lucullus, Rhubarb
 TOMATO—*early*—Fireball,‡ Firesteel, Hybrid E; *mid*season—
 Stokesdale, Pritchard†; *late*—Marglobe,† Rutgers†
 TOMATO, YELLOW—Jubilee
 TURNIP—Purple Top White Globe
 WATERMELON—New Hampshire Midget, Northern Sweet, Early
 Kansas,† Kleckley Sweet†

* Suitable for freezing. † For region I only. ‡ For region II only. See map on page 3 of this folder.

Matchless—A high-quality leaf lettuce that tolerates heat and does not go to seed. The leaves are dark green and shaped like a deer's tongue. It rated high in general performance.

Lake Superior—A new early strain of the Great Lakes head lettuce variety. Heads are solid and dark green. It appears to be tolerant of high temperatures and tip burn. Growers testing it reported favorable results.

MUSKMELON

Burpee Hybrid—A new F₁ hybrid melon that was tested for the first time and well received by growers. Fruits are large and almost round. They are ribbed and heavily netted. Flesh is deep orange and of excellent quality.

Delicious 51—A wilt-resistant melon producing slightly oval fruits, well-netted and ribbed. Quality and yield were not rated as high as the hybrid, although many of the testers liked it.

ONIONS

Autumn Spice—A hybrid onion that produces high yields of uniform, medium-sized bulbs. The heavy brown skin is well retained and it keeps exceptionally well in storage. Reports indicated good performance as a direct-seeded onion in the garden.

Epoch—A new hybrid onion similar to Brigham Yellow Globe, but matures slightly earlier. It produces a high percentage of U.S. No. 1 bulbs. It is especially suited where a long-keeping onion is desired. It was one of the most attractive hybrids in the 1956 trials.

PEAS

Burpeana Early Dwarf—An early variety that produces excellent yields on 18- to 24-inch vines. Pods are well filled with peas that are good quality and excellent for freezing. It rated high in our trials.

Little Marvel—An old variety but still very dependable. Growers scored it earlier and almost as high in general performance as Burpeana Early Dwarf. Pods are about 3 inches long and tightly filled with large peas.

PEPPERS

Faribo Hybrid—A F_1 hybrid producing large, blocky, green fruits with thick flesh. Most cooperators scored it as a promising early variety for the garden.

Morgold—An early, large-fruited pepper that turns yellow when mature. Plants are small in size but produce good yields of sweet, thick-walled fruits. It is rated highest in last year's trials.

Keystone Resistant Giant—A large, dark-green, blocky variety with mosaic resistance. Quality and yield was good but it appeared to be later than other varieties tested.

Illinois F₂—A variety with long rough fruits that was tested at only a few locations last year. Reports indicated it to be later than Morgold and the Hybrid but worthy of further tests.

POTATOES

Antigo—A new white, scab-resistant, midseason variety tested for the first time in Minnesota plots. The tubers are round, smooth, and have a tough skin. It is especially well suited to the peat soils where scab is a problem.

Red La Soda—A medium-early variety with good market and culinary qualities. The tubers have an intense red color and a smooth skin. They are round to oblong, with medium-shallow eyes. Although it has no resistance to scab or blight, Red La Soda's high yielding ability and good quality make it a good choice for home or commercial production.

RADISHES

White Globe—A new pure-white radish. It is nearly round when young and becomes flattened as the season progresses. Quality is mild and tender. It received a good general rating by most gardeners.

SQUASH

Hybrid R—One of the finest squash ever tested in Minnesota gardens. It is a true F_1 hybrid developed by the University of Minnesota. Fruits are red-orange and turban-shaped. The flesh is thick, fine-grained, dry and sweet. It is an excellent keeper. Reports showed it to be the earliest, highest yielder, and best quality of the three varieties tested.

Hybrid G—A dark green F_1 hybrid with similar shape and characteristics to Hybrid R. Cooperators did not rate it as high, however.

Blue Hubbard—A large-fruited, blue-gray, Hubbard-type squash. The flesh is deep yellow and of good texture. Although it was later than the other varieties, it produced good yields of good-quality fruits.



Hybrid R Squash

SWEET CORN

Morning Sun—A new early hybrid producing well-filled ears of corn that appear to stay long in prime roasting-ear stage. Has 14 rows of deep kernels. Reports show yield and quality good at most locations.

Sugar King—A new hybrid maturing 7 to 10 days later than Morning Sun. Ears are large with deep, narrow kernels. Yield and quality rated high.

Early Hybrid Blend—A blend of four or more early hybrids maturing not all at one time. Cooperators preferred other straight hybrids to the blend.

New Earligold—An early hybrid producing ears 7 to $7\frac{1}{2}$ inches long with 12 to 14 rows of kernels. Its earliness, size, and quality rated high with most cooperators.

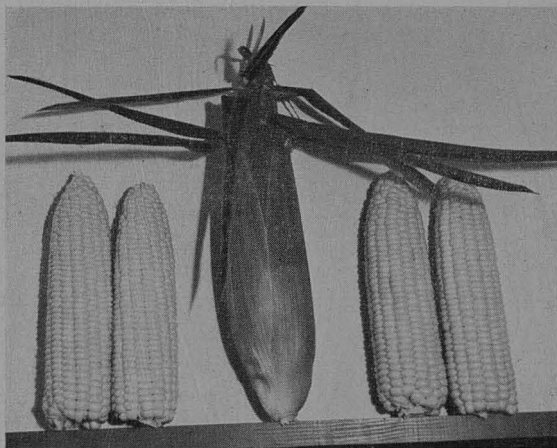
Early Hybrid—A new early hybrid with large ears and deep kernels. Gardeners rated it lower than Earligold.

Gold Rush—Another early hybrid with large ears that hold in eating stage for a long time. Cooperators liked its earliness and quality.

Sugar and Gold—An early hybrid which has been tested in plots for 4 years. The slender ears are 7 to 8 inches long with eight rows of yellow and white kernels. It rated earliest and highest in quality last year.

Golden Hybrid—Another new hybrid with large ears and maturing 2 weeks later than Earligold but similar in quality and yield.

Golden Security—The latest maturing variety tested in 1956. It produced large ears with 14 to 16 rows of kernels. Yield and quality were rated good.



Morning Sun Sweet Corn

TOMATOES

Earlibell—An early tomato producing fair yields of medium-sized fruits in the 1956 tests.

Fireball—The earliest of the varieties tested. Plants are small and bear large clusters of medium-sized fruit. As the season progresses the yield of good quality fruit drops off. It performed well in northern Minnesota where earliness is desired.

Moreton Hybrid—A very early F_1 hybrid tomato that produces heavy clusters of large, slightly flattened fruit. The interior of the fruit is thick-walled and meaty. Several favorable reports were received on its fine performance. (Shown on cover)

Springtime—A new early variety that produces a large quantity of small fruits on small, compact vines. Most cooperators indicated preference for larger fruiting types although it scored high on earliness.

Big Early Hybrid—An early fruiting F_1 hybrid producing large fruits for the entire season. The walls are thick and the interior deep-red and meaty. It rated highest on quality and general performance.

Big Boy—One of the largest fruiting F_1 hybrids with smooth, globe-shaped fruits. It rated second in general performance but matures later than the Big Early Hybrid.

Polaris—An F_1 hybrid that produces large early fruit with good market quality. It did not score as high this year on yield as in the 1955 tests.

Urbana—A new midseason variety with compact, bushy plants which provide good foliage for protection of the fruits. Interior of fruit has thick walls with small seed cavity. Although it was tested at only a few locations it rated good in yield, quality, and general performance.

WATERMELON

California Honey—An early variety of melon that produces solid, dark green fruits that are round to oval in shape. It is slightly smaller and almost as early as Rhode Island Red.

Rhode Island Red—A high-quality melon that is very early and productive. Fruits are light-green with dark stripes. They are larger than New Hampshire Midget and have a good firm rind that stands handling. Flesh is pink-red with comparatively few seeds. It rated high as a home garden melon in both northern and southern Minnesota.

UNIVERSITY OF MINNESOTA



3 1951 D04 088351 E

UNIVERSITY OF MINNESOTA, INSTITUTE OF AGRICULTURE
ST. PAUL 1, MINNESOTA

Cooperative Extension Work in Agriculture and Home Economics, University of Minnesota, Agricultural Extension Service and United States Department of Agriculture Cooperating, Skuli Rutford, Director. Published in furtherance of Agricultural Extension Acts of May 8 and June 30, 1914. 12M—3-57