

**Midtown Greenway Coalition: Public
Open Space Vision Plan**

**Prepared by
Jeff Liljegren
Graduate Research Assistant, University of Minnesota
Conducted on behalf of the Midtown Greenway Coalition
October, 2005**

*This report (NPCR 1230) is also available on the CURA website:
www.cura.umn.edu/search/index.php*

September, 2005

Neighborhood Planning for Community Revitalization (NPCR) supported the work of the author of this work, but has not reviewed it for publication.

The content is solely the responsibility of the author and is not necessarily endorsed by NPCR.

NPCR is coordinated by the Center for Urban and Regional Affairs at the University of Minnesota. NPCR is supported by grants from The Minneapolis Foundation, the McKnight Foundation, The Bremer Foundation, and The St. Paul Travelers Foundation.

Neighborhood Planning for Community Revitalization

330 Hubert H. Humphrey Center

301 - 19th Avenue South

Minneapolis, MN 55455

phone: 612/625-1020

e-mail: ksn@umn.edu

website: <http://www.npcr.org/>

Creating Public Open Spaces
NEIGHBORHOOD-BASED RESEARCH & DESIGN



Jeff Liljegren - Graduate Research Assistant
Midtown Greenway Coalition

Creating Public Open Spaces

NEIGHBORHOOD-BASED RESEARCH & DESIGN

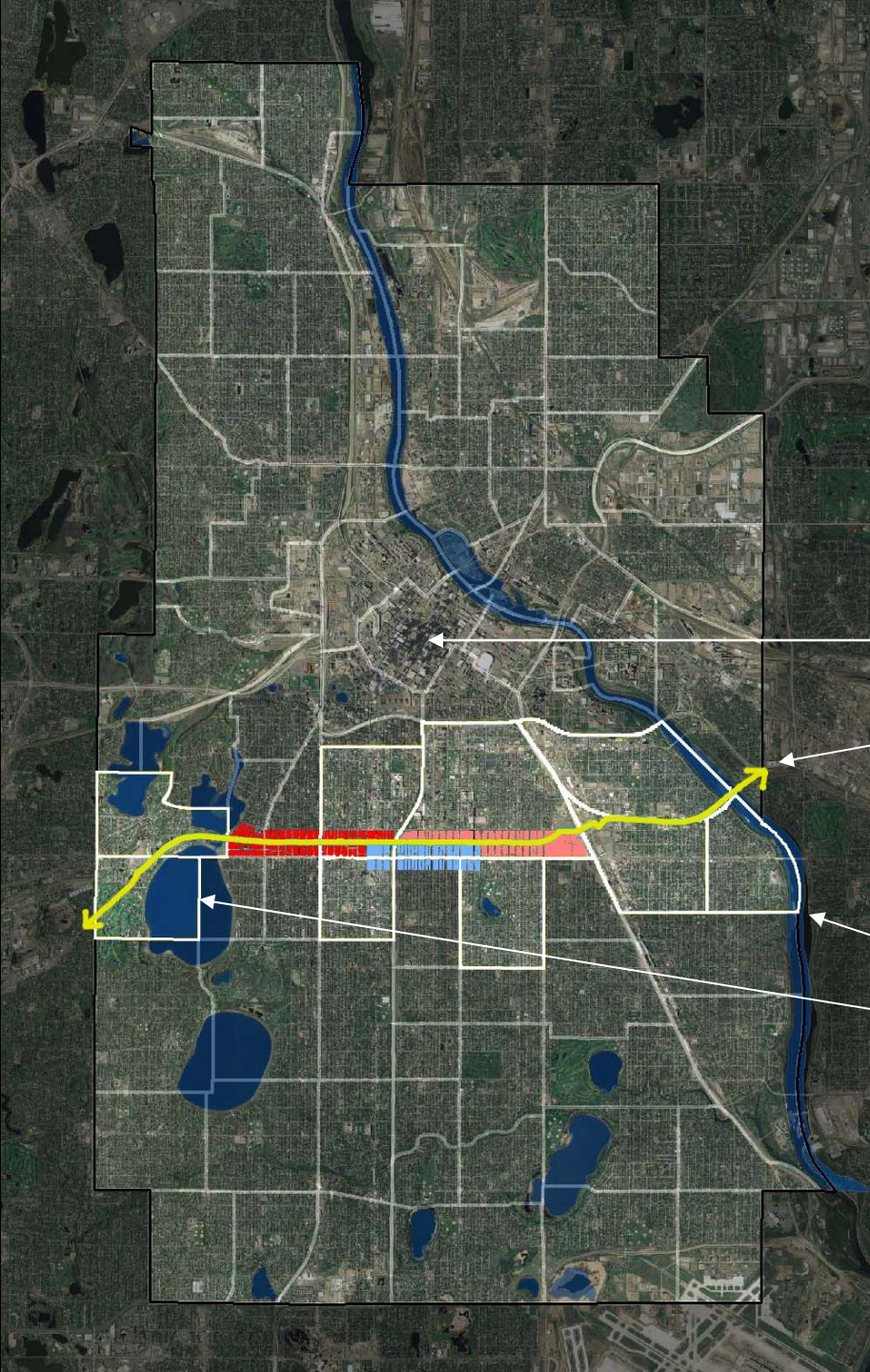
Project Goal: To provide the Coalition with a “set” of illustrative renderings depicting what different open spaces might look like along the greenway as a tool to help push forward the collective desire of “Midtown Greenway” neighborhoods for **public open space.**

Creating Public Open Spaces

NEIGHBORHOOD-BASED RESEARCH & DESIGN

Providing public open space allows for opportunities to:

- Include Activity Destinations
 - Demonstrate and manage good ecological design with sustainable plant communities and stormwater management
 - Improve Midtown Greenway access, safety and aesthetics
-

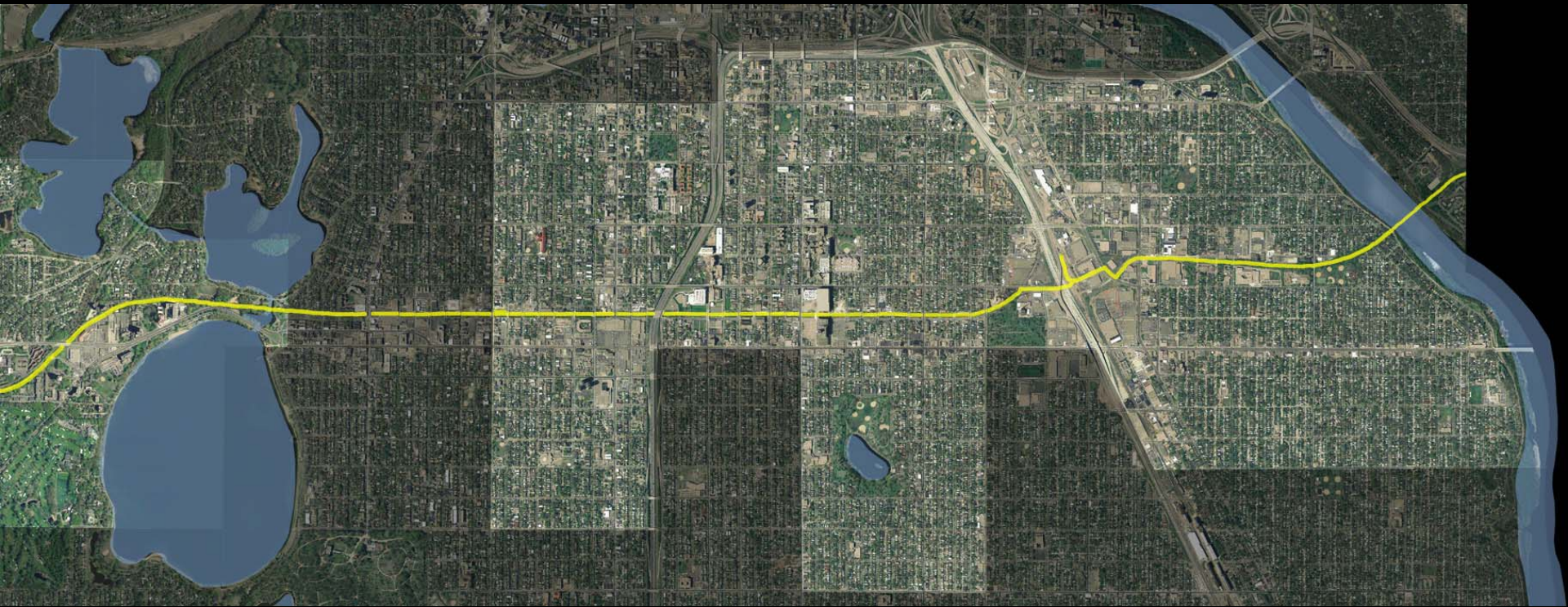


Regional Context

Downtown Minneapolis

Midtown Greenway

Mississippi River
Lake Calhoun

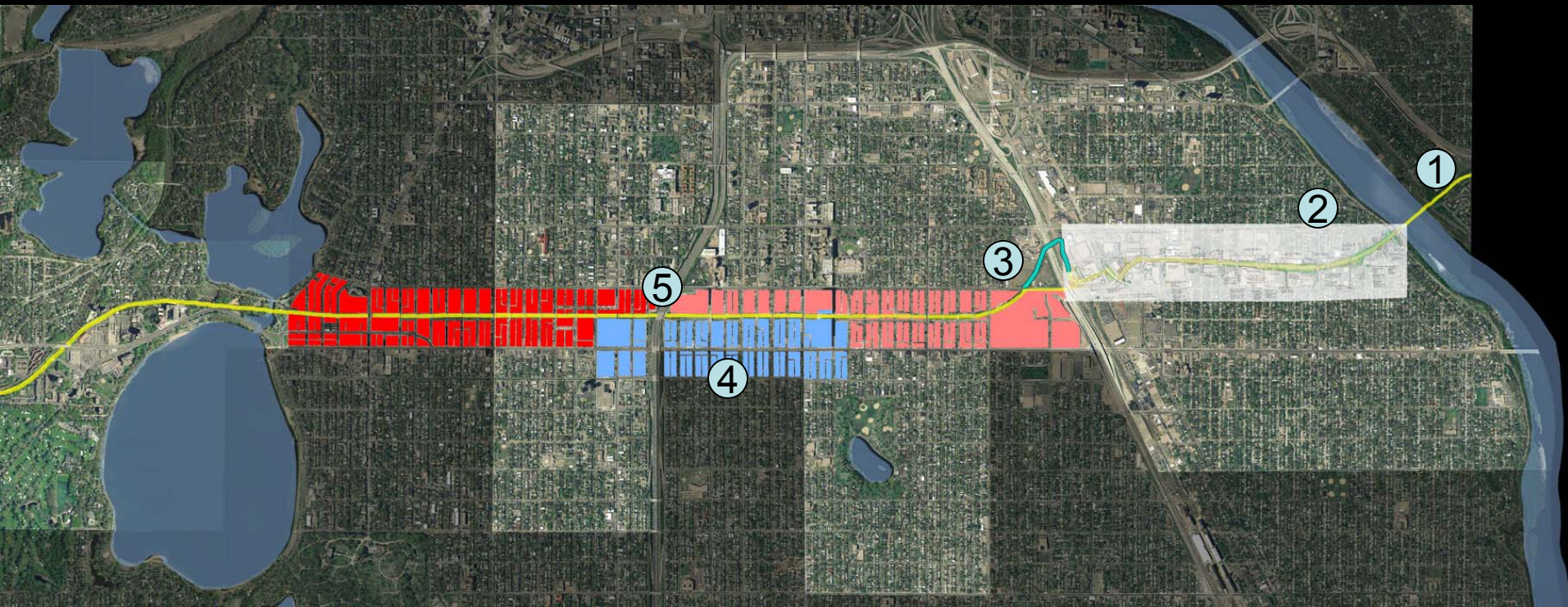


The Midtown Greenway —

Will connect the Chain of Lakes to the Mississippi with completion of Phase 3

Provides a necessary loop to the Grand Rounds

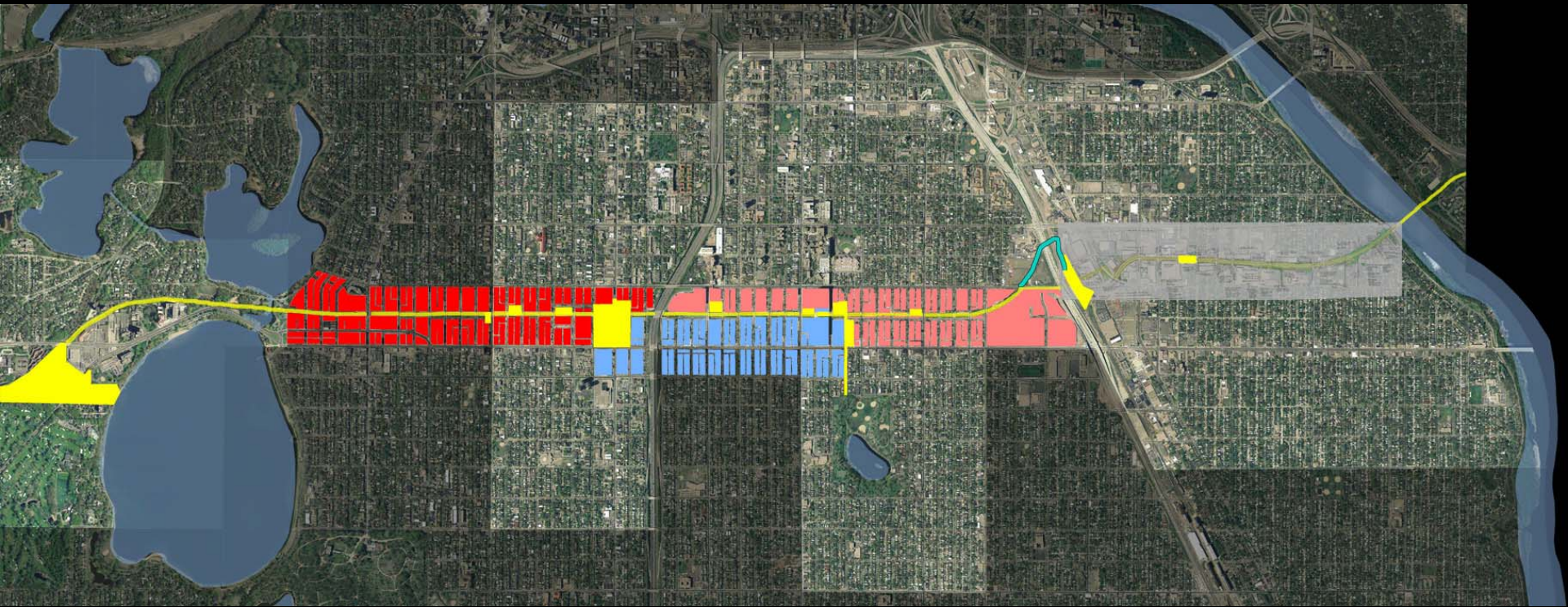
Will eventually connect Uptown to Grand Avenue via a St. Paul Extension of the Midtown Greenway



Recent Work Along the Greenway

1. Acquisition of Federal dollars to span the Greenway across the Mississippi
2. Landscape Planting and Design Plan
by Simonet for Longfellow Community Council along Phase 3
3. Martin Sabo Pedestrian Bridge over Hiawatha LRT
4. Midtown Minneapolis Land Use and Development Plan
by Biko Associates, Metropeligo P.C. and City of Minneapolis
5. Current Midtown Greenway Land Use and Development Plan
by SEH and the City of Minneapolis

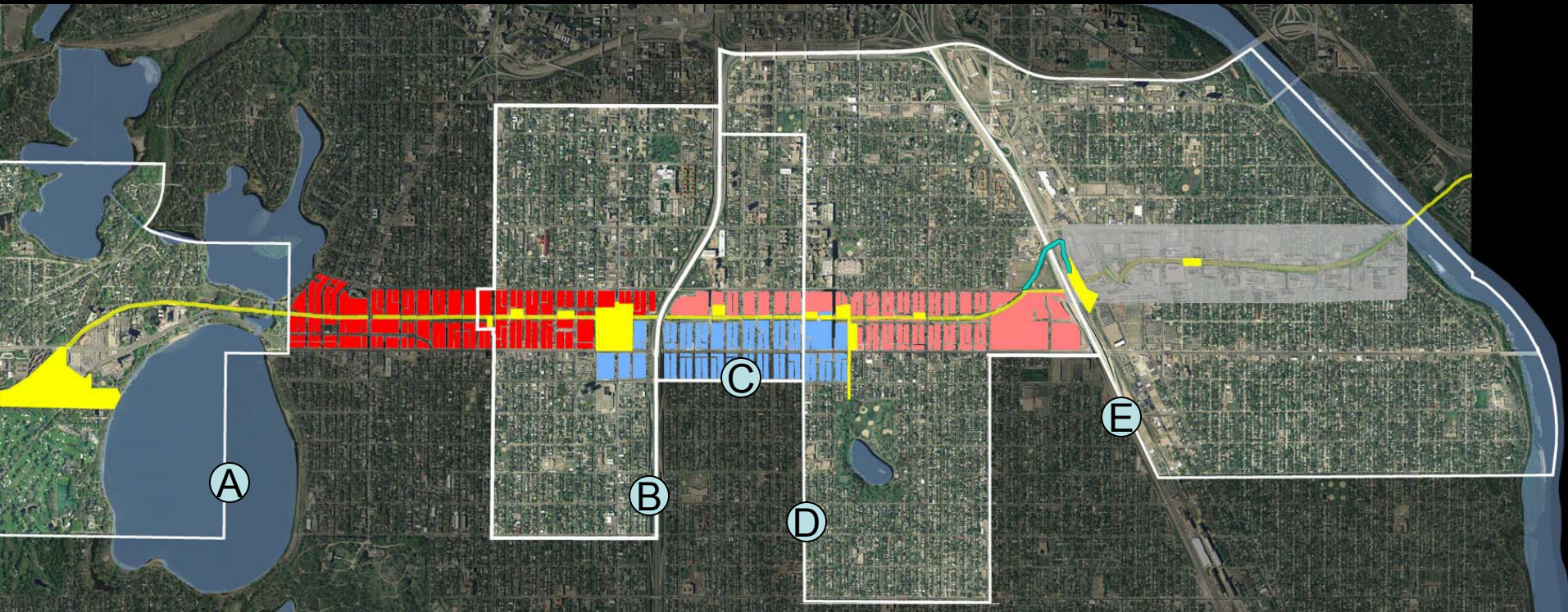




Midtown Greenway Open Space Vision Plan ■

Includes 12 Identified adjacent sites suitable for public open space

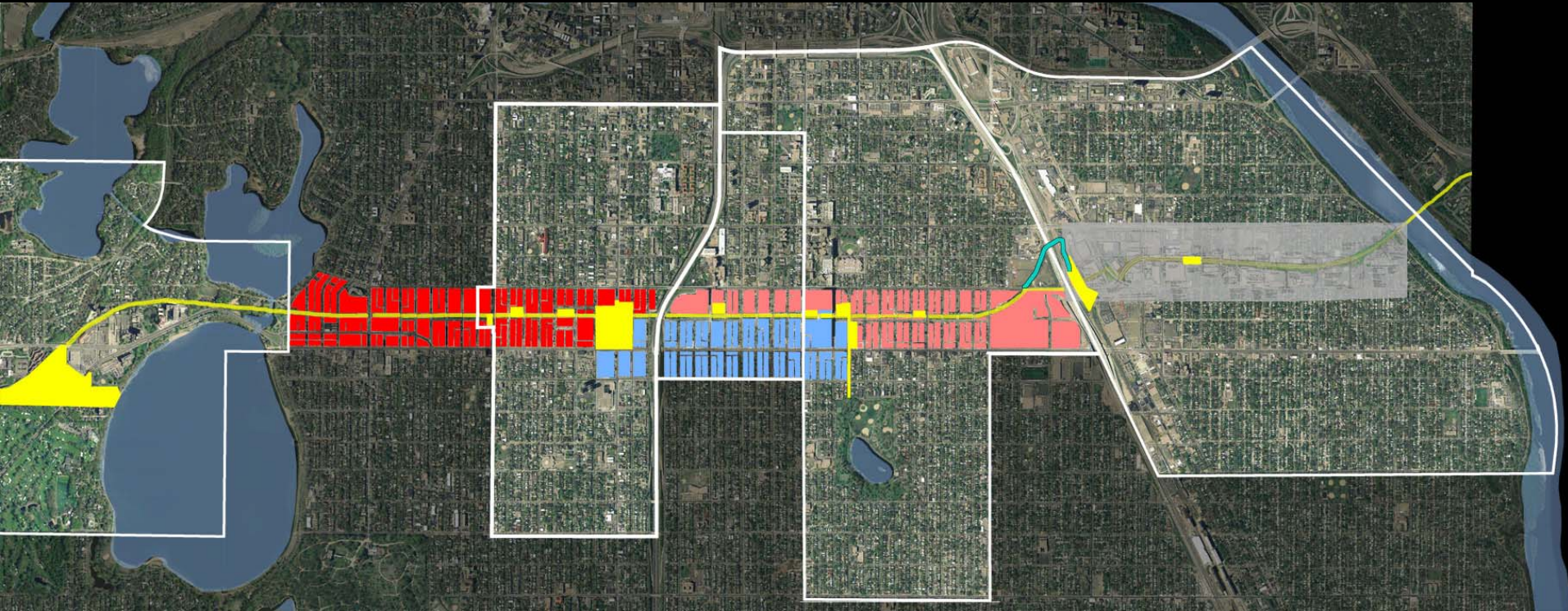
Sites are grouped based on Neighborhood Boundaries



Five Neighborhood Based Groups



- A. West Calhoun-Cedar Isles Dean
- B. Whittier-Lyndale
- C. Phillips West - Central
- D. Midtown/East Phillips-Powderhorn
- E. Seward-Longfellow



Twelve Individual Sites Suitable for Public Open Space ■

(Identified by the cross street)

Chowen Avenue

5th Avenue

East of Hiawatha

SW Corner of Lyndale

Chicago to Elliott

29th Avenue “Nolo Park”

Soo Line Garden (Garfield Ave)

Cepro Grain Elevator Site (11th Ave)

Pleasant to Pillsbury

Link to Powderhorn via 11th Ave.

Nicollet

15th to Bloomington

Twelve Individual Sites Suitable for Public Open Space



(Identified by the cross street)

SITE NAME

SITE FUNCTION

Chowen Avenue

Future Rail Transit Station and Greenspace

SW Corner of Lyndale

Future Rail Transit Station/ Plaza

Soo Line Garden

Community Garden Pedestrian Access

Pleasant to Pillsbury

Green Open Space and w/ “graceful” Bike Ramp

Nicollet

Future Rail Transit Station/ Public Plaza w/ Access

5th Avenue

Green Public Gathering Space (ideas to be determined)

Chicago to Elliott

Green Open Space and w/ “graceful” Bike Ramp

Cepro Grain Elevator Site

100% Park Space w/ Bike – Ped. Access

Link to Powderhorn via 11th Ave.

Boulevard and linear park connection to P. Park

15th to Bloomington

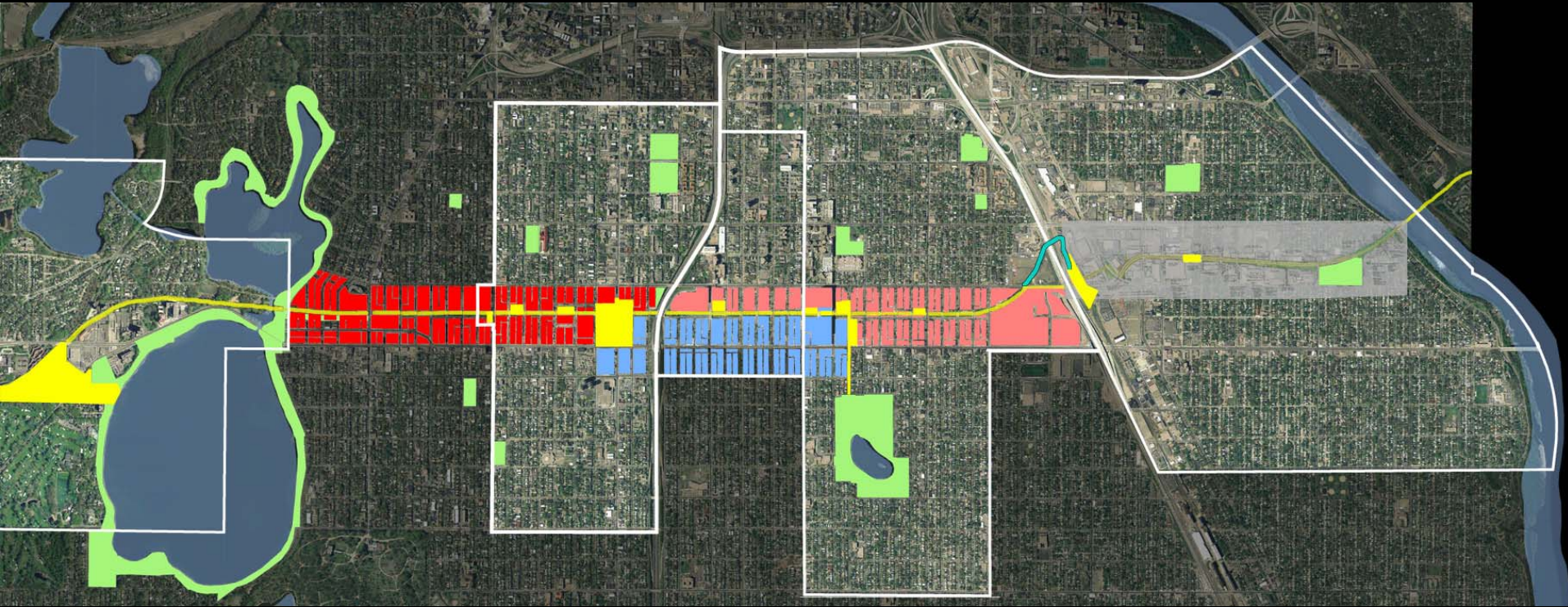
Green Open Space and w/ “graceful” Bike Ramp
and Amphitheater

East of Hiawatha

Green Public Gathering Space – Park Space

29th Avenue “Nolo Park”

Brownfield Revitalization – Public Art Space

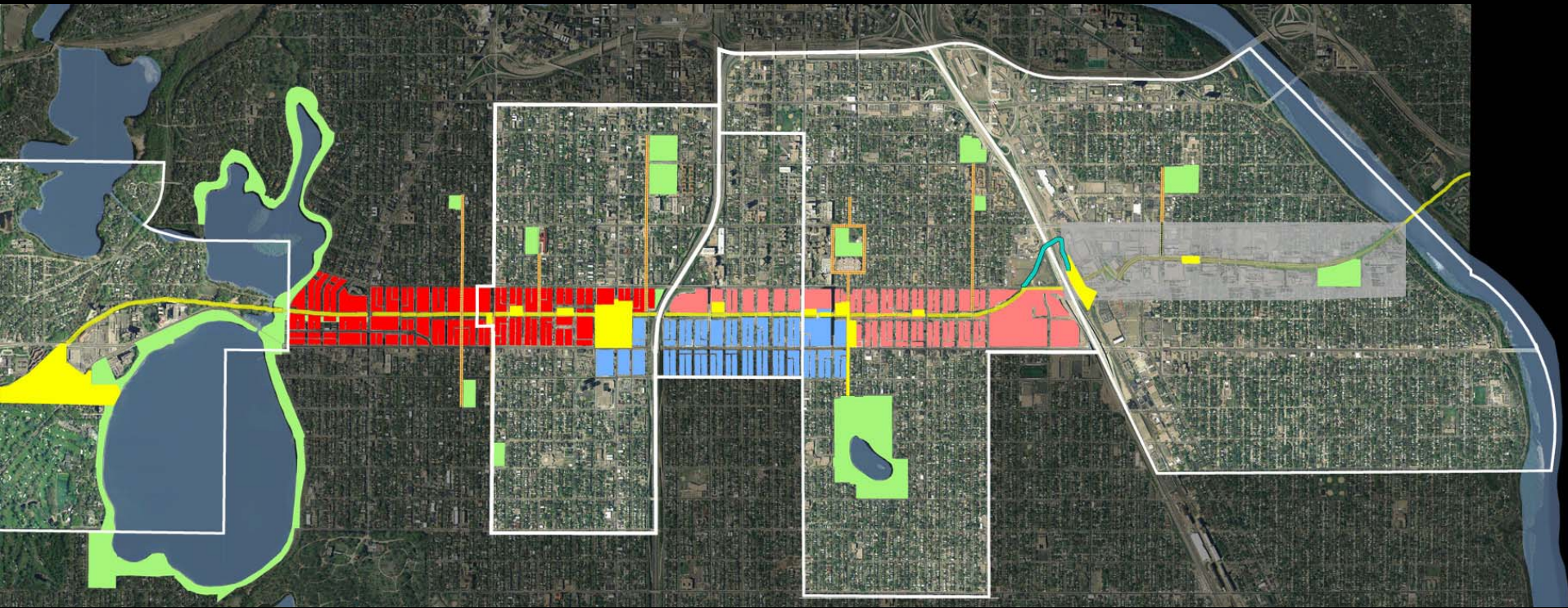


Enhancing the Quality of Life and our Park System ■

New public open spaces along the Greenway will:

Help balance and increase the quality of life for our existing neighborhoods

Ensure the preservation of that quality of life for those who come due to additional development.



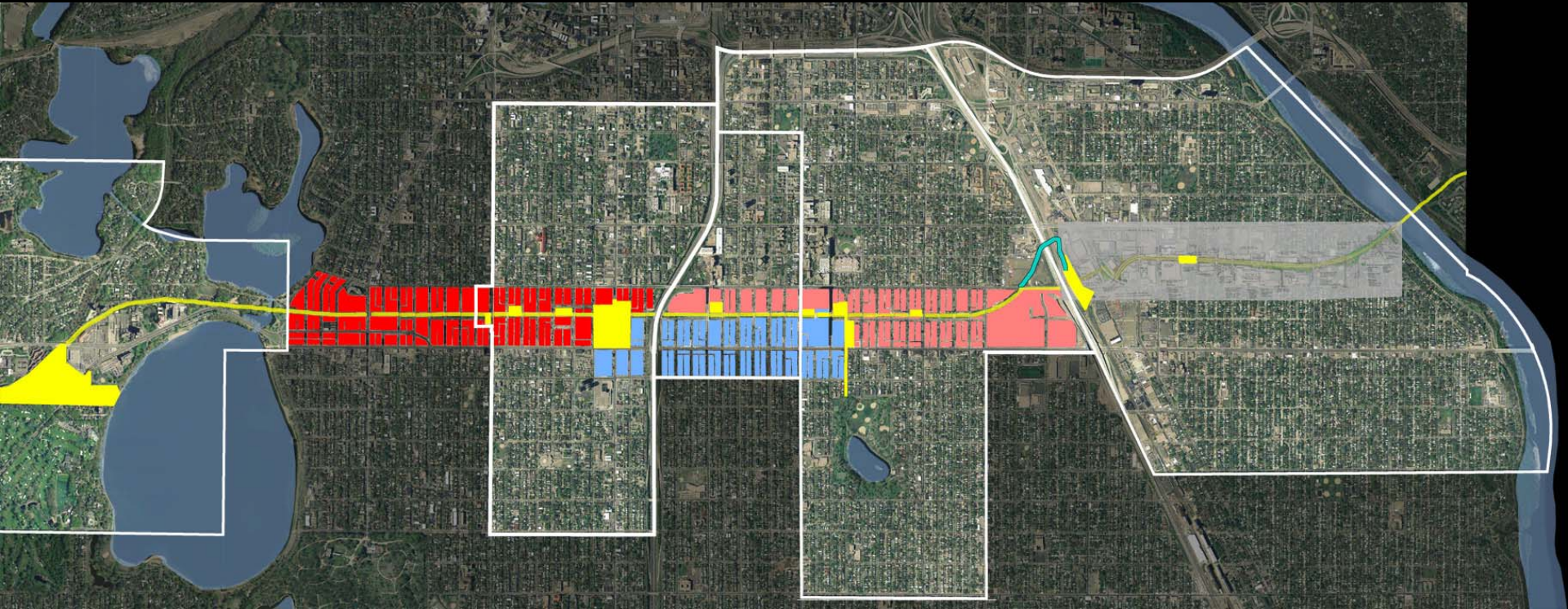
Fingers of the Midtown Greenway |

The proposed Powderhorn Link via 11th Avenue is just the beginning....

Recommend further links to neighborhood parks

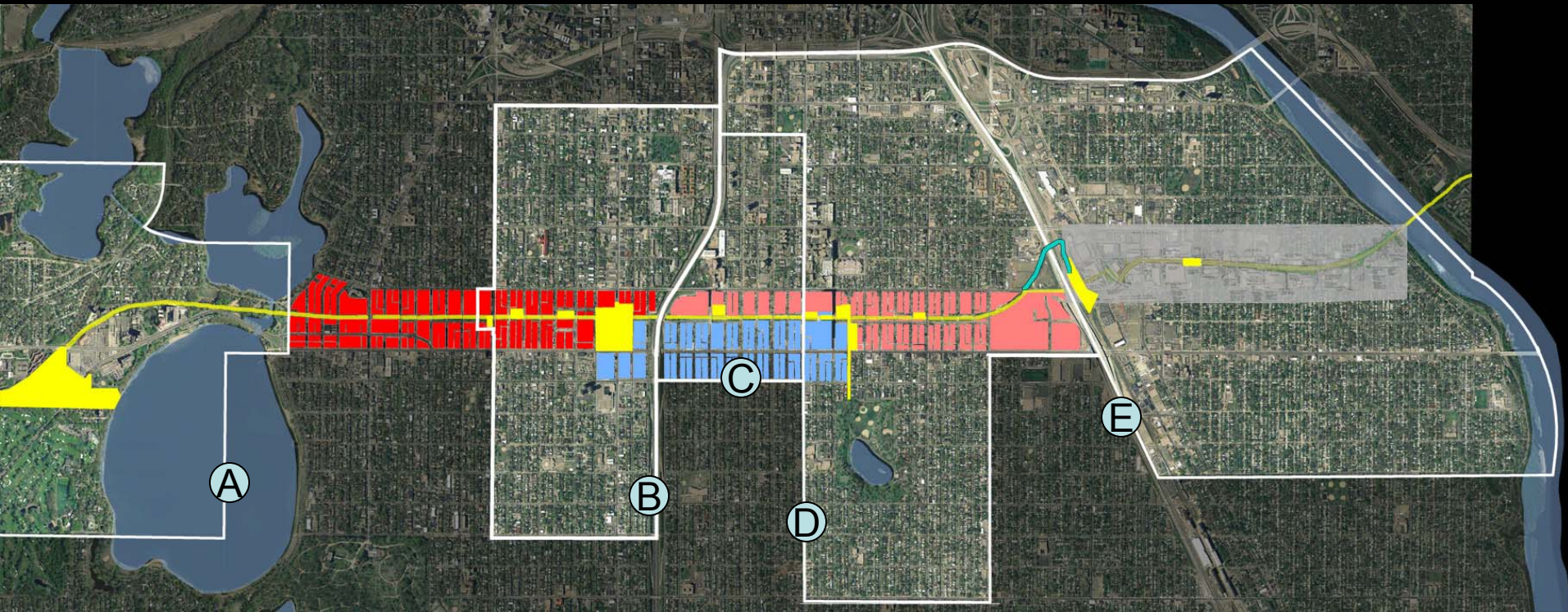
If the Grand Rounds is the Aorta of the Minneapolis Park and Trail System....

Consider these "fingers" as capillaries of the Midtown Greenway



Midtown Greenway Open Space Vision Plan

Thank you..... Questions?



Five Neighborhood Based Groups



- A. West Calhoun-Cedar Isles Dean
- B. Whittier-Lyndale
- C. Phillips West - Central
- D. Midtown/East Phillips-Powderhorn
- E. Seward-Longfellow

Midtown Greenway Public Open Space Vision Plan

CREATING PUBLIC OPEN SPACES - NEIGHBORHOOD BASED RESEARCH & DESIGN



The Midtown Greenway is a six-mile long bike and pedestrian corridor in south Minneapolis that runs along the 29th Street railroad corridor connecting Lake Calhoun to the Mississippi River. In July of 2005, the second phase of the greenway of a three-phase plan was officially opened to the public while final plans and designs for the third phase were coming to a close. This third phase will be completed in the summer of 2006 along with the addition of a pedestrian bridge over Hiawatha which will transform the old rail corridor into a seamless multi-modal route that will provide a necessary cross route for the Minneapolis Grand Rounds and provide new connectivity for some of the City's most culturally diverse neighborhoods.

No transportation infrastructure is complete without destinations and the Midtown Greenway is of no exception to this. With the opening of "Phase II", the Greenway has become much more visible and has caught the eye of many developers who want to build right on it. The Greenway is a public good and so steps should be taken to sustain the livable qualities of the Greenway so that it does not become suffocated by the towering walls of development.

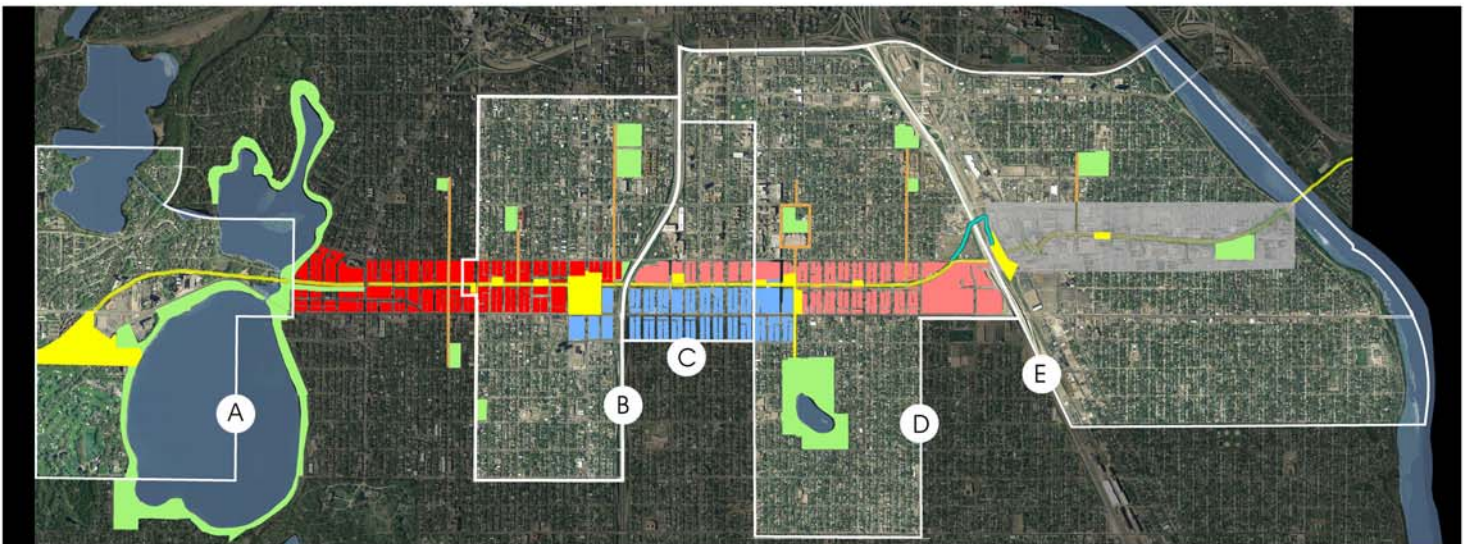
The answer to this involves the setting aside of adjacent lands suitable for public open space. Public open spaces provide many opportunities when considering transit corridors. They offer activity destinations. They can improve access to the Greenway and its aesthetics. And they can provide opportunities for demonstrating and managing good ecological design with sustainable plant communities and storm water management.

This vision includes 12 identified adjacent sites suitable for public open space. These sites have been organized into 5 neighborhood-based groups to allow for future strategic implementation.



Recent Work Along the Greenway

1. Acquisition of Federal dollars to span the Greenway across the Mississippi
2. Landscape Planting and Design Plan by Simonet for Longfellow Community Council along Phase 3
3. Future Pedestrian Bridge over Hiawatha LRT
4. Midtown Minneapolis Land Use and Development Plan by Biko Associates, Metropeligo P.C. and City of Minneapolis
5. Current Midtown Greenway Land Use and Development Plan by SEH and the City of Minneapolis (RED/PINK)



NEIGHBORHOOD GROUPS

A. WEST CALHOUN - CEDAR ISLES DEAN

B. WHITTIER - LYNDALE

C. PHILLIPS WEST - CENTRAL

D. MIDTOWN/EAST PHILLIPS-POWDERHORN

E. SEWARD - LONGFELLOW

SITE NAME

Chowen Avenue

SW Corner of Lyndale

Soo Line Garden

Pleasant to Pillsbury

Nicollet

Chicago to Elliott

Cepro Site

Link to Powderhorn

via 11th Ave.

15th to Bloomington

East of Hiawatha

29th Ave. "Nolo Park"

SITE FUNCTION

Future Rail Transit Station and Greenspace

Future Rail Transit Station/ Plaza

Community Garden Pedestrian Access

Green Open Space w/ "graceful" Bike Ramp

Future Rail Transit Station/ Public Plaza w/ Access

(ideas to be determined)

Green Open Space w/ "graceful" Bike Ramp

100% Park Space w/ Bike - Ped. Access

Boulevard and linear park connection to P. Park

Green Open Space w/ "graceful" Bike Ramp

and Amphitheater

Green Public Gathering Space - Park Space

Brownfield Revitalization - Public Art Space





Context Map

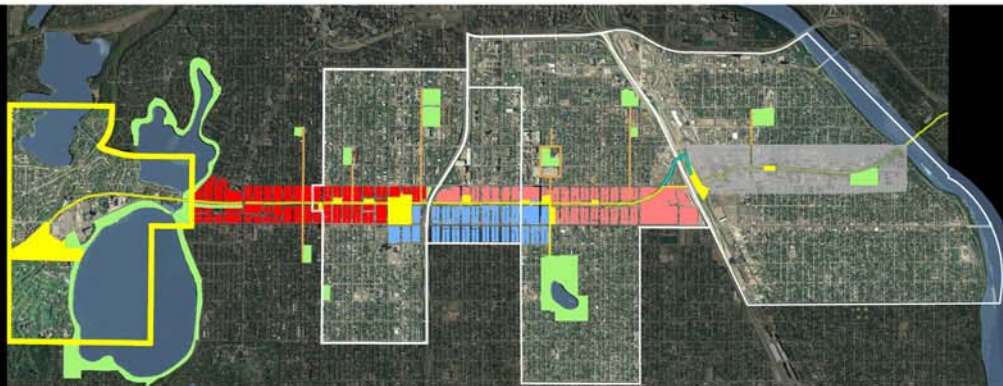


Site Parcel Ownership



Chowen Avenue Transit Station Site Plan

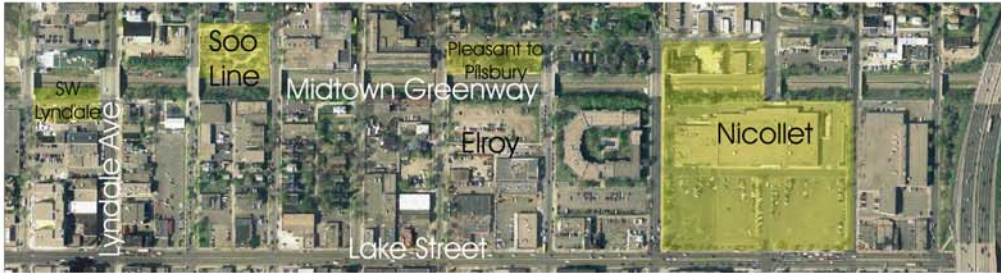
With the advent of a potential transit station to be located off Chowen Avenue here behind Whole Foods, visions for a public open space were sought from the **West Calhoun Neighborhood Council** and local business in the area. From two community meetings, participants made suggestions that are depicted in the context and site plans. Major concerns included a community garden, old growth tree preservation, reintroduction of native vegetation and safer, easier access to Whole Foods Parking Lot and to Lake Calhoun via pedestrian and bike pathways. All input was very helpful in this first visioning process and it is hoped that those and additional stakeholders will continue to participate in future discussions for this site.



Midtown Greenway Public Open Space Vision Plan

WEST CALHOUN - CEDAR ISLES DEAN





Context Map

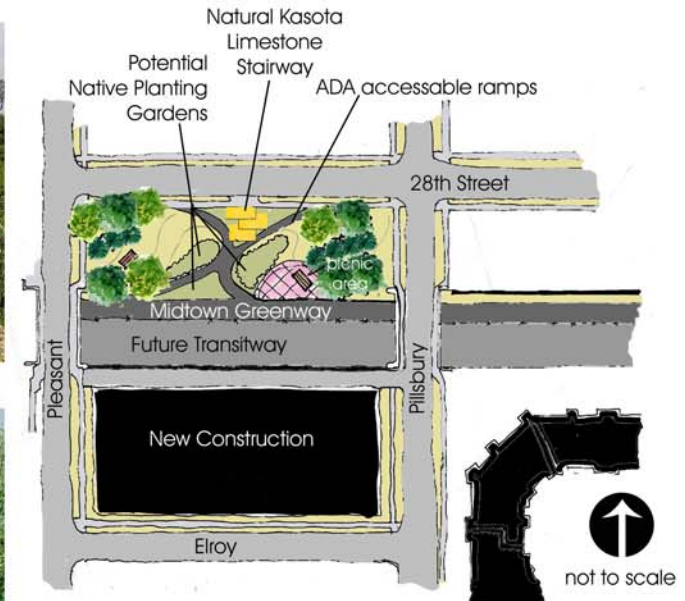
The expectation of future transit along the Midtown Greenway may bring transit stops to Lyndale Avenue and Nicollet Avenue, where current adjacent lands are privately owned. With the suggestion of such locations, it is recommended that the development of such sites should allocate for public open space that provides graceful access on and off the Greenway. Other opportunities exist with the potential for additional public open space along the north side of the corridor between Pleasant to Pillsbury, which is also currently private land. **The Whittier Alliance, Lyndale Neighborhood Council, and Soo Line Garden** where all approached to begin the discussion concerning these sites. The Lyndale and Whittier Neighborhoods and the Soo Line Garden are all currently the focus of potential future development along the Greenway and therefore discussions concerning public open space will need further input and participation from these neighborhoods and additional stakeholders in defining what these public open spaces will be.

Soo Line Garden

Ever since they helped clear the demolition of a grain elevator from what is now the Soo Line Garden, those involved have transformed this plot of Hennepin County owned land into a wonderful public good that provides access to the Greenway, food for those who work its soils, and an aesthetic amenity for all. It is currently listed as a potential development site by the City of Minneapolis. We would like to protect it in its current state and include it as an additional public open space of the greenway in this vision plan.

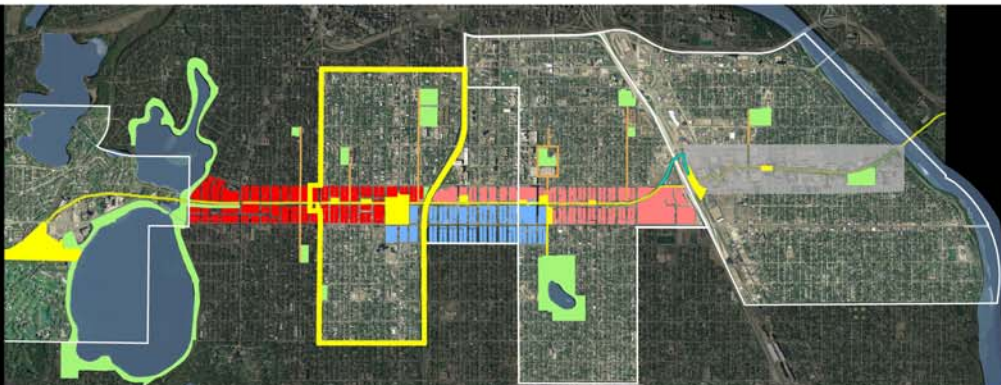


Soo Line Garden



Pleasant to Pillsbury Site Plan

SW Corner of Lyndale Avenue



Midtown Greenway Public Open Space Vision Plan

WHITTIER - LYNDALE





Context Map

The guidelines of the park board of Minneapolis state that every neighborhood should have its very own neighborhood park. Phillips West, however, is one of only two neighborhoods in the city that do not. The at-street-grade crossing of the Midtown Greenway at 5th Avenue provides a unique opportunity for a future public open space, but before anything can come to fruition many must come to a consensus. Those parties involved, include: **Urban Ventures** (who owns the existing parking lot on the northwest side of the intersection), the community of **Phillips West** and **Wells Fargo**. With the anticipation of the new Colin Powell Center, the existing parking lot holds many different possibilities for everyone.



Conceptual Corridor and Park Design
Close Landscape Architects



Site Plan

Phillips West was approached to gather potential opportunities for what the Urban Ventures parking lot could be if eventually purchased and transformed into public open space. In the discussion that transpired, Phillips West requested a coordinated meeting, where appropriate representatives of Wells Fargo, Urban Ventures, Midtown Greenway Coalition and Phillips West, would need to occur first to clarify the future of this parking lot before they would be willing to share ideas of what 5th Avenue and the Greenway could be. Reluctantly, they expressed grilling stations for picnics and possible basketball courts.



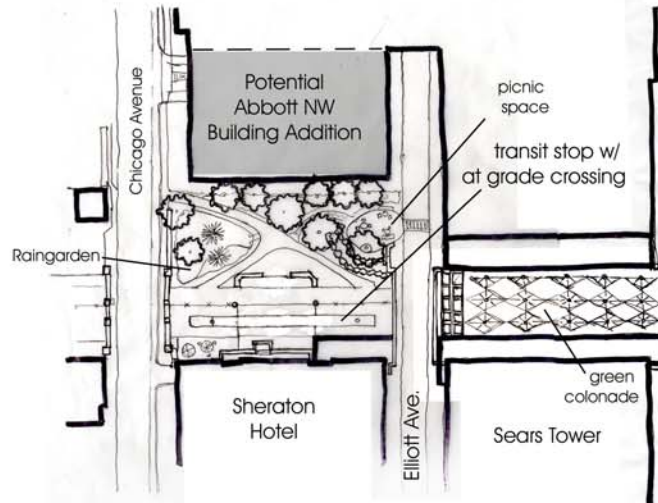
Midtown Greenway Public Open Space Vision Plan

PHILLIPS WEST - CENTRAL

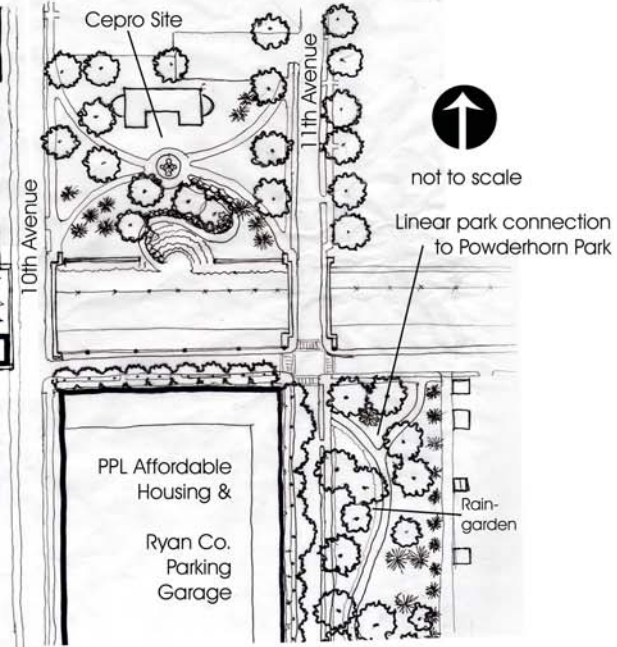




Perspective looking west from under Elliot to Chicago Ave.



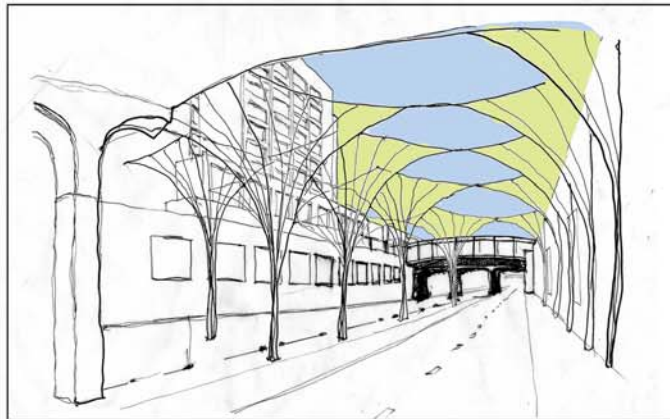
Context and Site Plans



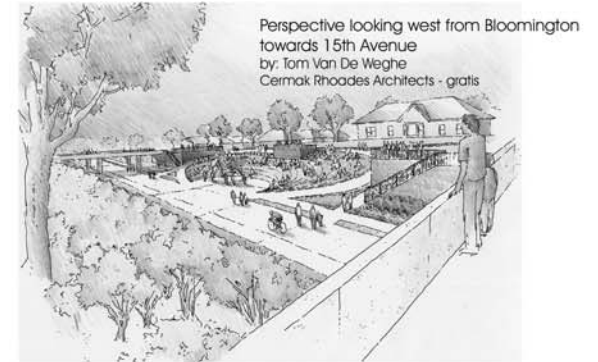
not to scale

Linear park connection to Powderhorn Park

Renovation and new development around the Sears Tower and the Midtown Exchange has brought much opportunity. With this, the need for public open spaces has drawn strong support from both community and public agency support. **The Midtown Phillips Neighborhood Council** strongly supports public open space at Elliot to Chicago, 10th to 11th and 15th to Bloomington. Support from **Project for Pride and Living (PPL)** and the surrounding community express the desire for a link to Powderhorn Park from the Greenway via 11th Ave. One suggestion is a linear park from 29th to Lake Street. In future discussions, those community partners previously listed should continue to participate and additional stakeholders should be sought for their input, including: **Mercado Central**, the **Global Marketplace** and the **Somali Action Alliance**.



Perspective looking west through colonade from under 10th to Elliott Ave.



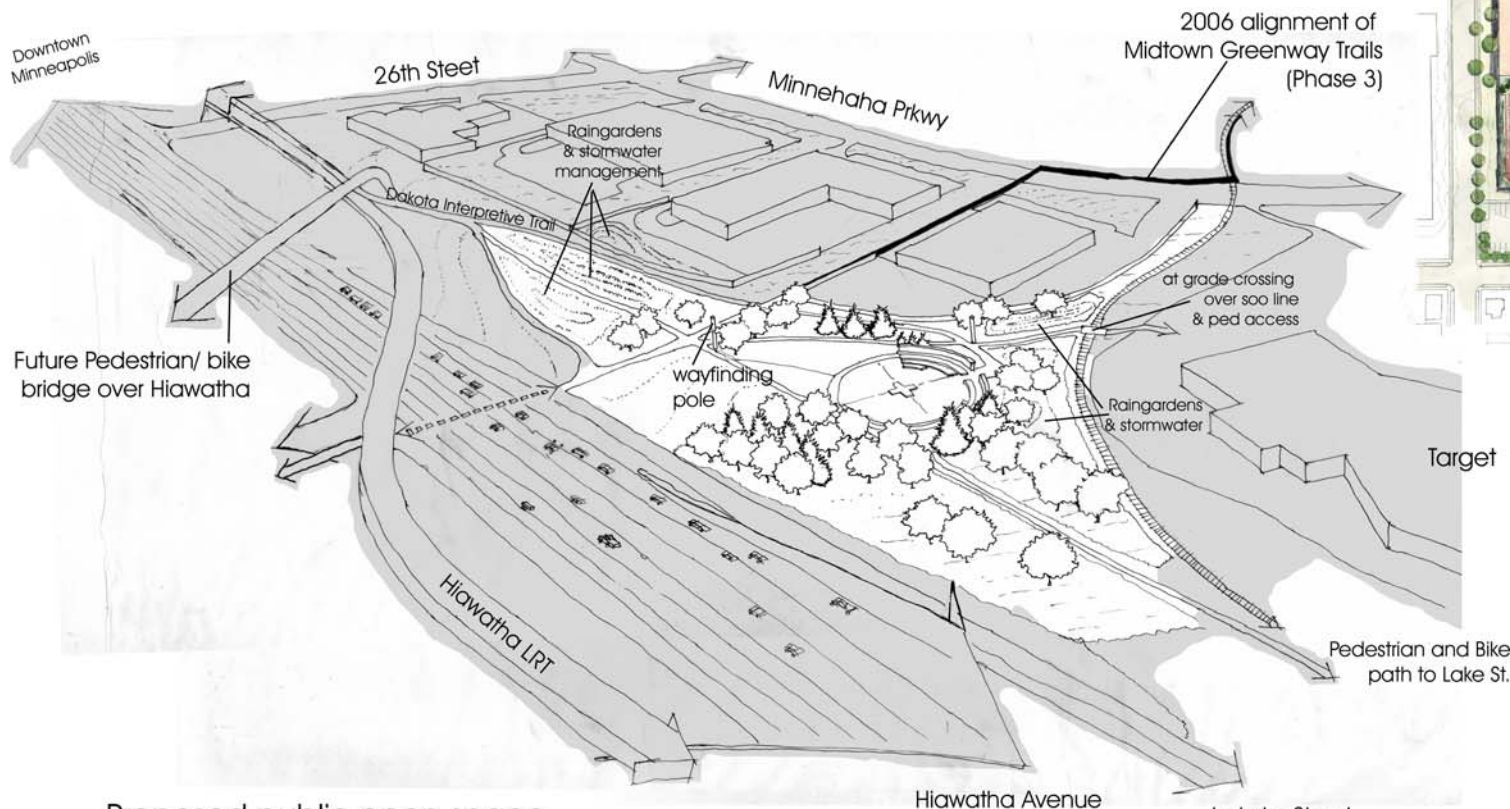
Perspective looking west from Bloomington towards 15th Avenue
by: Tom Van De Weghe
Cermak Rhoades Architects - gratis



Midtown Greenway Public Open Space Vision Plan

MIDTOWN/EAST PHILLIPS - POWDERHORN





Proposed public open space
East of Hiawatha Avenue



29th Ave. "Nolo Park" proposal by
Anne Okerman, 2002

The Midtown Greenway, as a complete trail, will soon come to fruition with the construction of Phase 3 which will connect Hiawatha to the Mississippi River in the summer of 2006. The City owned land, east of Hiawatha, poses a wonderful opportunity to bind the existing trail to its 3rd leg with a wonderful public open space that will serve everyone from trail goers, to the nearby businesses of Minnehaha Parkway, to the surrounding neighborhoods of **Greater Longfellow and Seward**. In gathering input, both neighborhoods were approached along with **Little Earth for United Tribes**. The Phase III landscape plan was also reviewed and with a combination of ideas, this axonometric looking northeast, suggests a medicine wheel inspired design that makes reference to the regions indigenous cultures and provides a large venue public space that can be enjoyed and shared by all passers by.



Midtown Greenway Public Open Space Vision Plan

SEWARD - LONGFELLOW

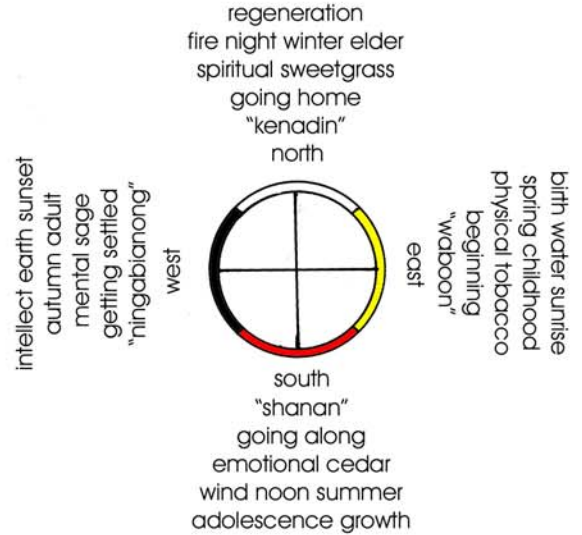


Midtown Greenway Public Open Space Vision Plan

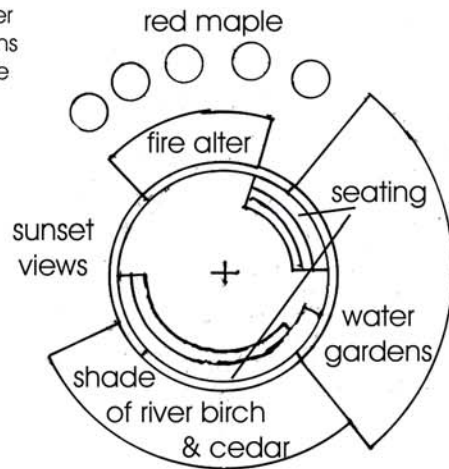


SEWARD - LONGFELLOW

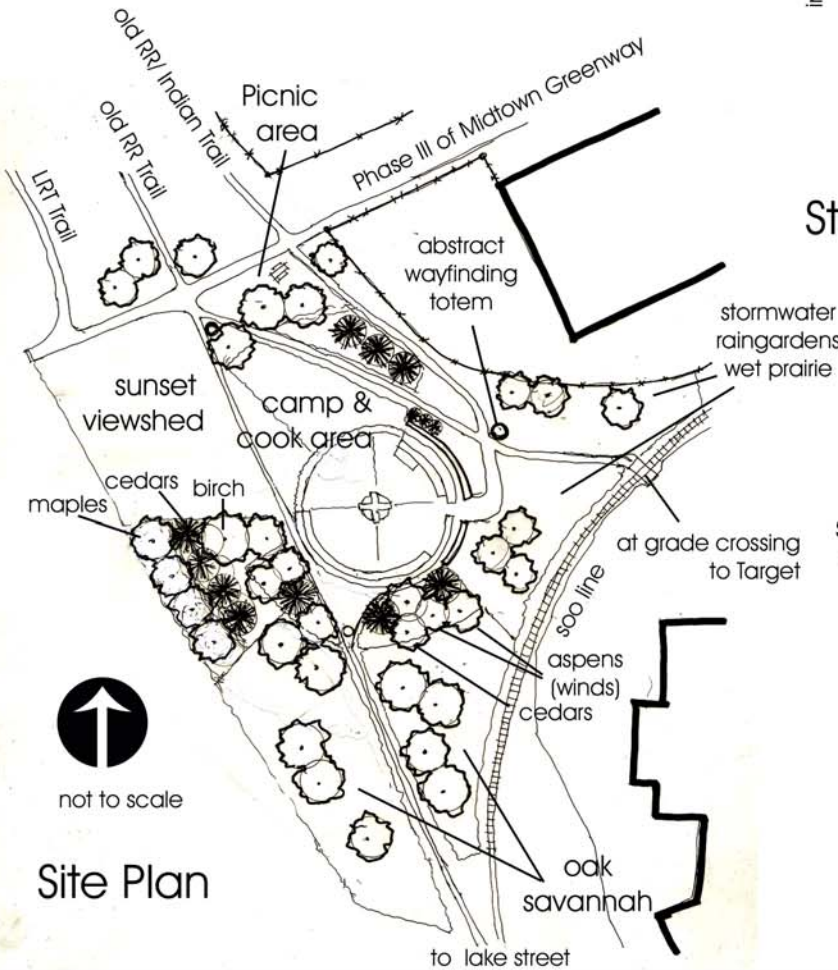
The Hiawatha trail has provided a trade route for many years in this region with its genesis established by the areas indigenous cultures. The route from St. Anthony Falls to Minnehaha Creek, where trade took place regularly, continues today as an important pedestrian and bike route for many inhabitants of the surrounding neighborhoods. As a way to provide a unique public open space for the Midtown Greenway and to capitalize on this areas natural "crossroads" function, a council ring designed space inspired by the concept of a medicine wheel infuses the space with meaning, order and activity.



Standard Medicine Wheel



Design Concept



not to scale

Site Plan

Perspective looking west along Soo Line from Minnehaha back towards Hiawatha

