

Kris Nelson Community-Based Research Program

...a program of the Center for Urban and Regional Affairs (CURA)

Planning for the Future of Cleveland Park: A Community Led Vision

Prepared in partnership with
Cleveland Neighborhood Association

Prepared by
Amber Hill
Research Assistant
University of Minnesota

2012

KNCBR Report # 1352

*This report is available on the CURA website:
<http://www.cura.umn.edu/publications/search>*

Center for Urban and
Regional Affairs (CURA)

UNIVERSITY OF MINNESOTA
Driven to Discover™

The Kris Nelson Community-Based Research Program is coordinated by the Center for Urban and Regional Affairs (CURA) at the University of Minnesota, and is supported by funding from the McKnight Foundation.

This is a publication of the Center for Urban and Regional Affairs (CURA), which connects the resources of the University of Minnesota with the interests and needs of urban communities and the region for the benefit of all. CURA pursues its urban and regional mission by facilitating and supporting connections between state and local governments, neighborhoods, and nonprofit organizations, and relevant resources at the University, including faculty and students from appropriate campuses, colleges, centers or departments. The content of this report is the responsibility of the author and is not necessarily endorsed by the Kris Nelson Community-Based Research Program, CURA or the University of Minnesota

© 2012 by The Regents of the University of Minnesota.



This work is licensed under the Creative Commons Attribution---NonCommercial-ShareAlike 3.0 Unported License. To view a copy of this license, visit <http://creativecommons.org/licenses/by-nc-sa/3.0/> or send a letter to Creative Commons, 444 Castro Street, Suite 900, Mountain View, California, 94041, USA. Any reproduction, distribution, or derivative use of this work under this license must be accompanied by the following attribution: “© The Regents of the University of Minnesota. Reproduced with permission of the University of Minnesota’s Center for Urban and Regional Affairs (CURA).” Any derivative use must also be licensed under the same terms. For permissions beyond the scope of this license, contact the CURA editor.

This publication may be available in alternate formats upon request.

Center for Urban and Regional Affairs (CURA)
University of Minnesota 330 HHH Center
301—19th Avenue South
Minneapolis, Minnesota 55455
Phone: (612) 625-1551
E-mail: cura@umn.edu
Web site: <http://www.cura.umn.edu>

The University of Minnesota is committed to the policy that all persons shall have equal access to its programs, facilities, and employment without regard to race, color, creed, religion, national origin, sex, age, marital status, disability, public assistance status, veteran status, or sexual orientation.

ACKNOWLEDGEMENTS

The following stakeholders contributed their time, insights and resources to this planning process:

Ariah Fine

Kristine Miller

Coal Dorias

Cleveland Neighborhood Association

Residents of Cleveland Neighborhood

An architectural rendering of a park area. In the center is a white pavilion with a grey roof. To its left is a wooden pergola with several people sitting on benches underneath. To the right is a large white climbing structure on a green mat. A teal path winds through the scene. In the background, there are trees and a white building. Silhouettes of people are scattered throughout, including one riding a bicycle in the foreground.

PLANNING FOR THE FUTURE OF CLEVELAND PARK

A COMMUNITY LED VISION

TABLE OF CONTENTS

Project Goals	4
Action Plan	4
Process Summary	5
Site Analysis	
Vegetation	6
Hydrology	7
Existing Infrastructure/Use	8
Comparison to Nearby Parks	9
Connections to Future Plans	10
Entrances/Circulation/Parking	11
Community Engagement	
Parties in the Park	12
Community Meeting	13
Concepts	
Concept Design 1	14
Concept Design 2	15
Additional Concepts	16
Community Engagement Summary	17
Cleveland Park Feedback Map	18
Final Schematic Design	19-26
How to Get Involved	27

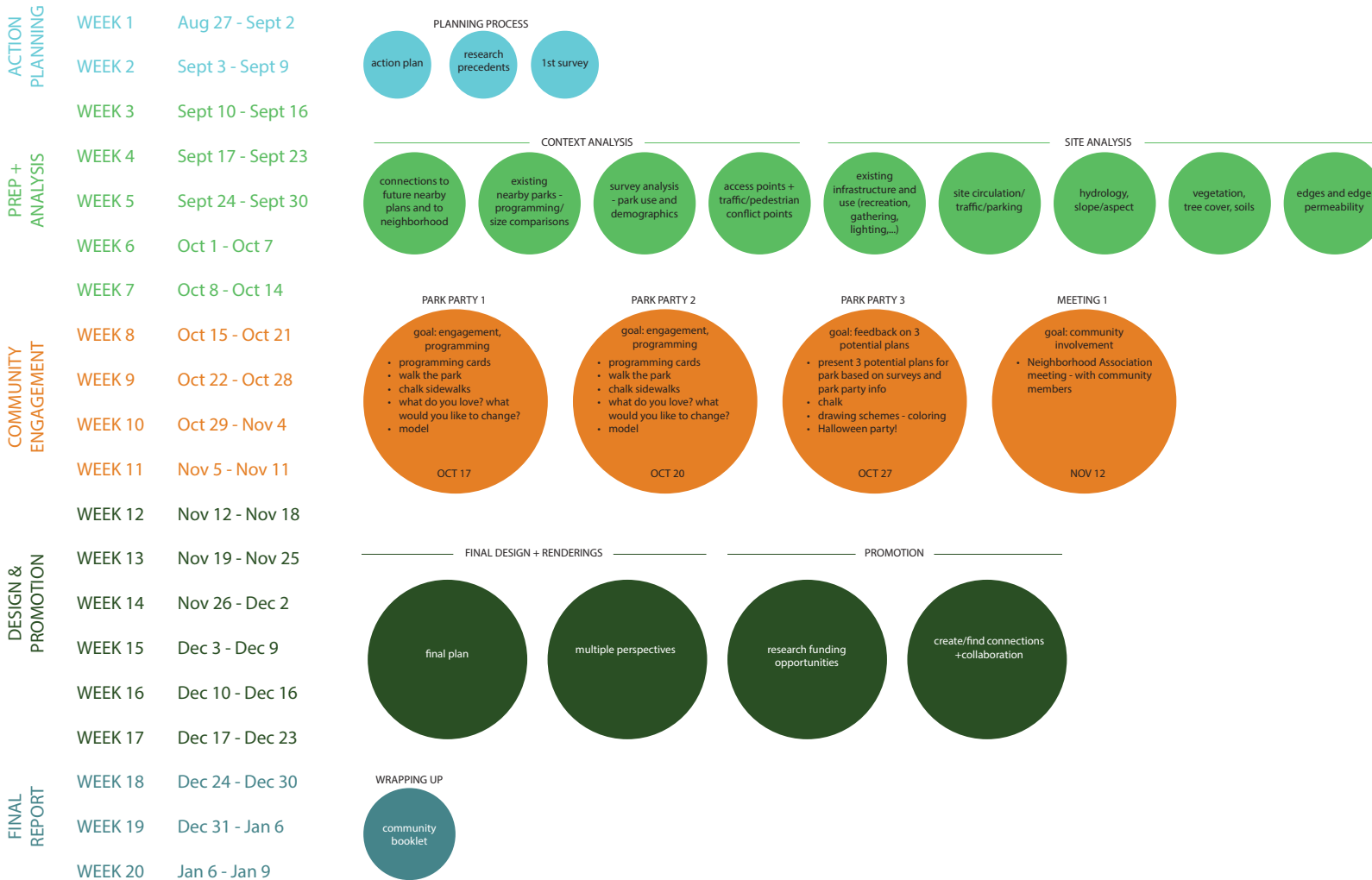
PROJECT GOALS

The Cleveland Neighborhood Association partnered with a team from the University of Minnesota Landscape Architecture Department to engage community members who use Cleveland Park to envision a new park and become aware and interested in current neighborhood projects.

The goal of this project is to get people thinking about this park space and show new ideas for the potential of this public space. The ideas expressed in this booklet are intended to get people excited about possibilities at Cleveland Park.

PLANNING FOR THE FUTURE OF CLEVELAND PARK ACTION PLAN

SCHEDULE:



PROCESS SUMMARY

Site Analysis - The first stage of the process included studying the current site conditions to determine opportunities and constraints for design. Also design precedents and options were compiled.

Parties in the Park - The second stage of the process included hosting 3 Parties in the Park. These parties showed programming possibilities for the park, we conducted surveys and interviews to get people's opinions about the park and information on how the park is generally used. We also got to know some community members and had refreshments.

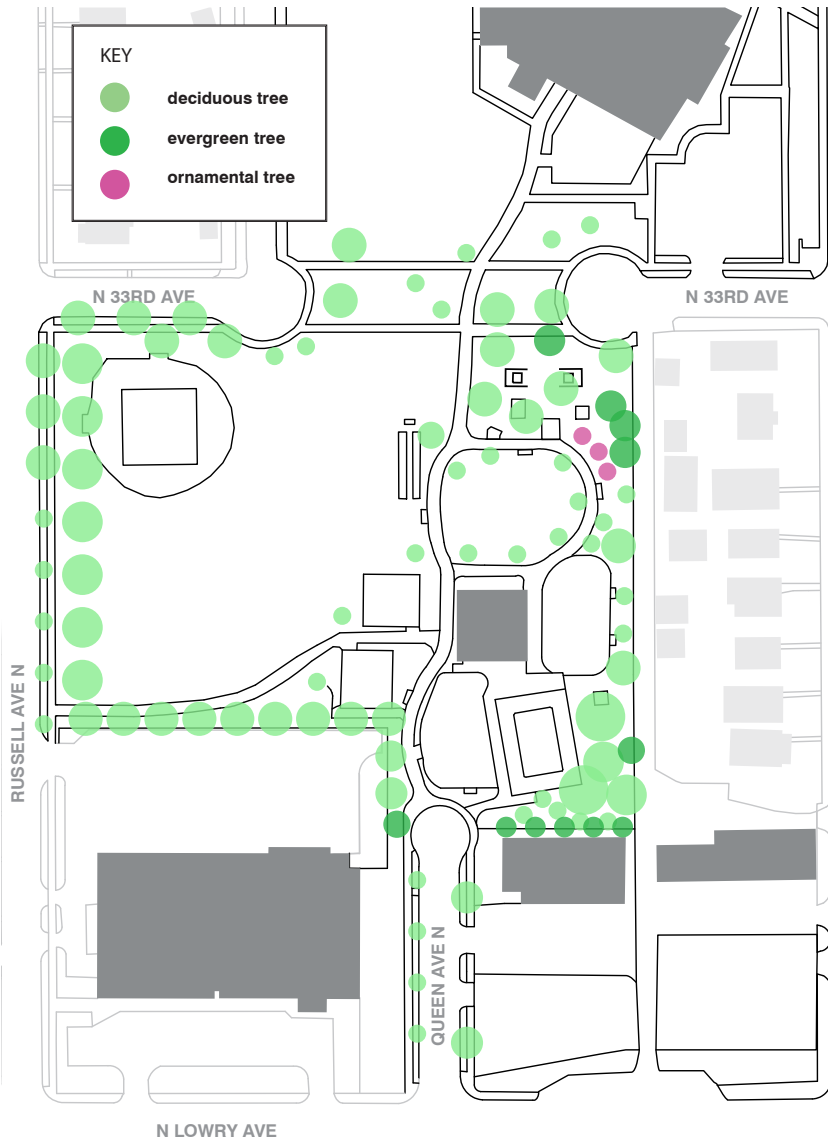
Concept Designs - After the Parties in the Park we drew up some design options based on feedback we got during the community engagement period.

Community Meeting - We showed community members the concept designs and had a deeper discussion about programming elements and design.

Final Schematic Design - A Final Schematic Design was created based on feedback from the Community Meeting.



SITE ANALYSIS - VEGETATION



CURRENT VEGETATION AT CLEVELAND PARK

Cleveland Park is vegetated with trees and lawn. Most of the trees are deciduous, there are a few flowering trees, shown in pink, and the darker green trees are evergreens. The size of the tree circle corresponds with the size of the tree. The most mature trees are over 40 feet tall.

DESIGN POSSIBILITIES



community garden with paths



raised bed community garden



picnic area among many trees



flower garden

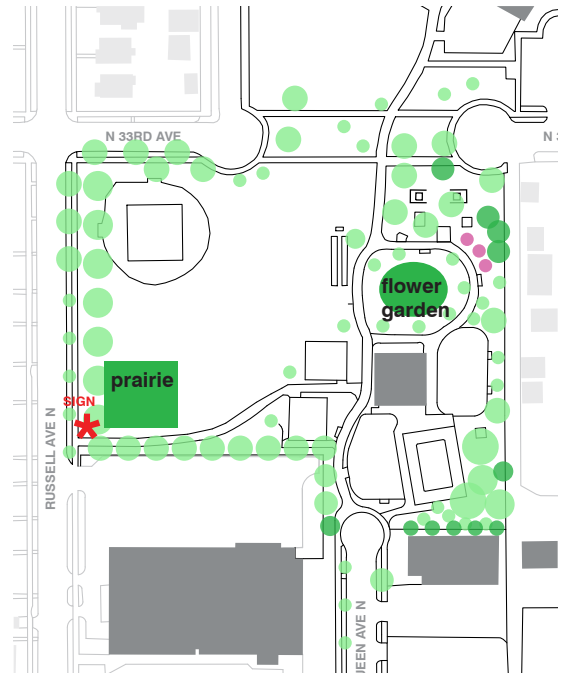
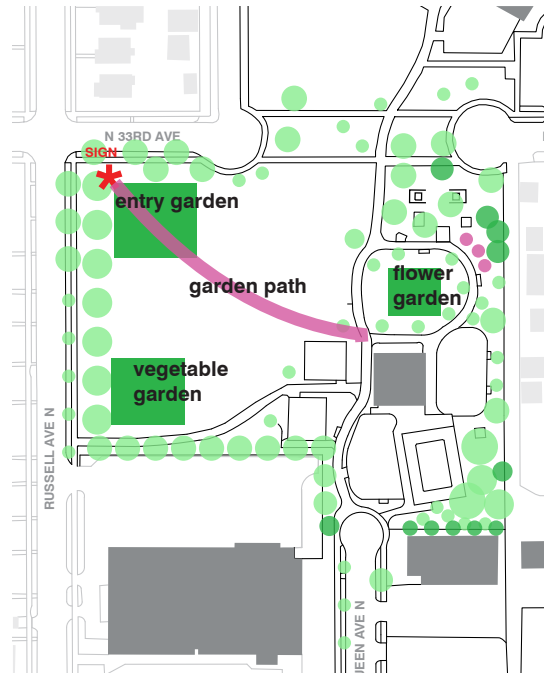


native flower garden

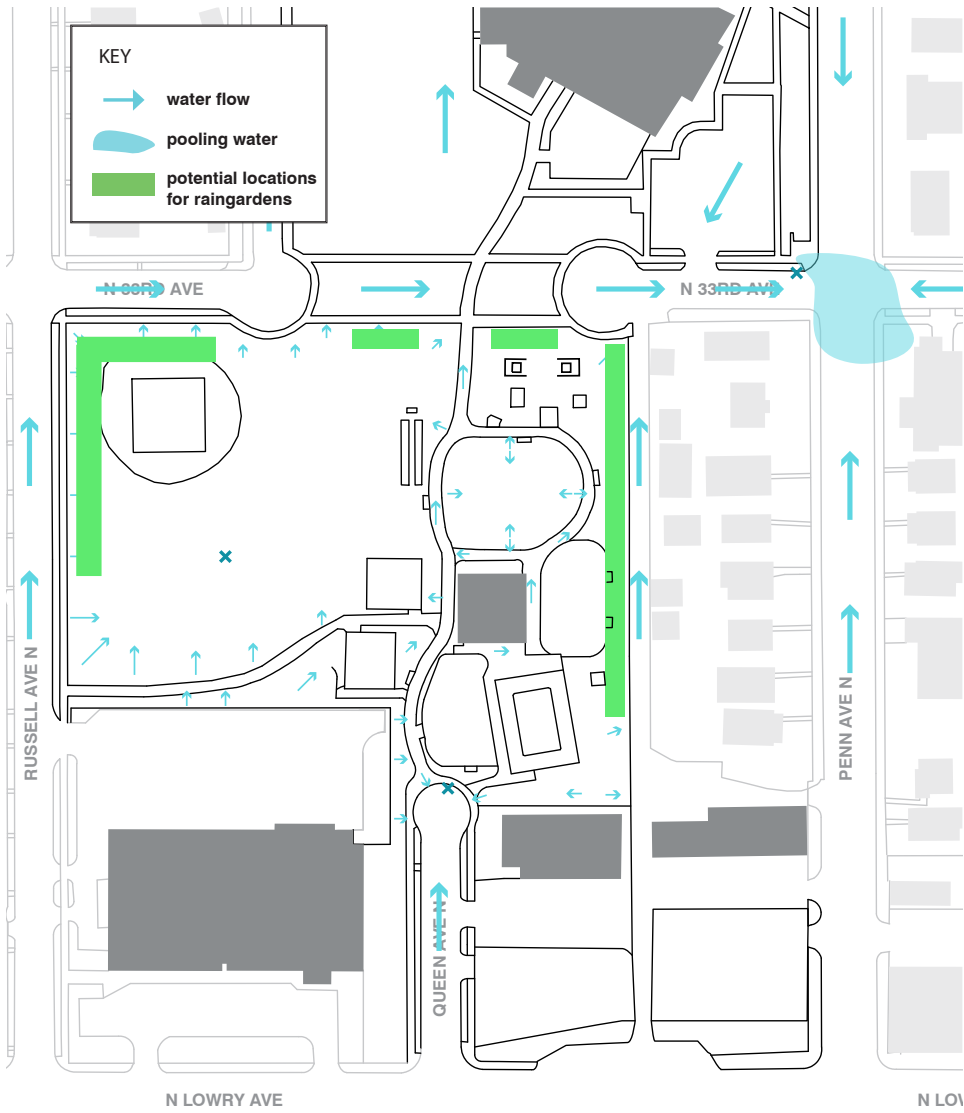


prairie garden

DESIGN CONCEPTS WITH GARDENS



SITE ANALYSIS - HYDROLOGY



CURRENT HYDROLOGY AT CLEVELAND PARK

Most of the water at Cleveland Park drains to the center of the park where a drain is located. The water that enters the street does so by way of the alley or the N 33 Ave connection. Locations marked in green could potentially be used for raingardens for the mitigation of the quantity of stormwater runoff entering into the streets and adding to the problem of local flooding on the corner of Penn Ave and N 33rd Ave.

DESIGN POSSIBILITIES



streetside raingarden



parking lot raingarden



school raingarden with path

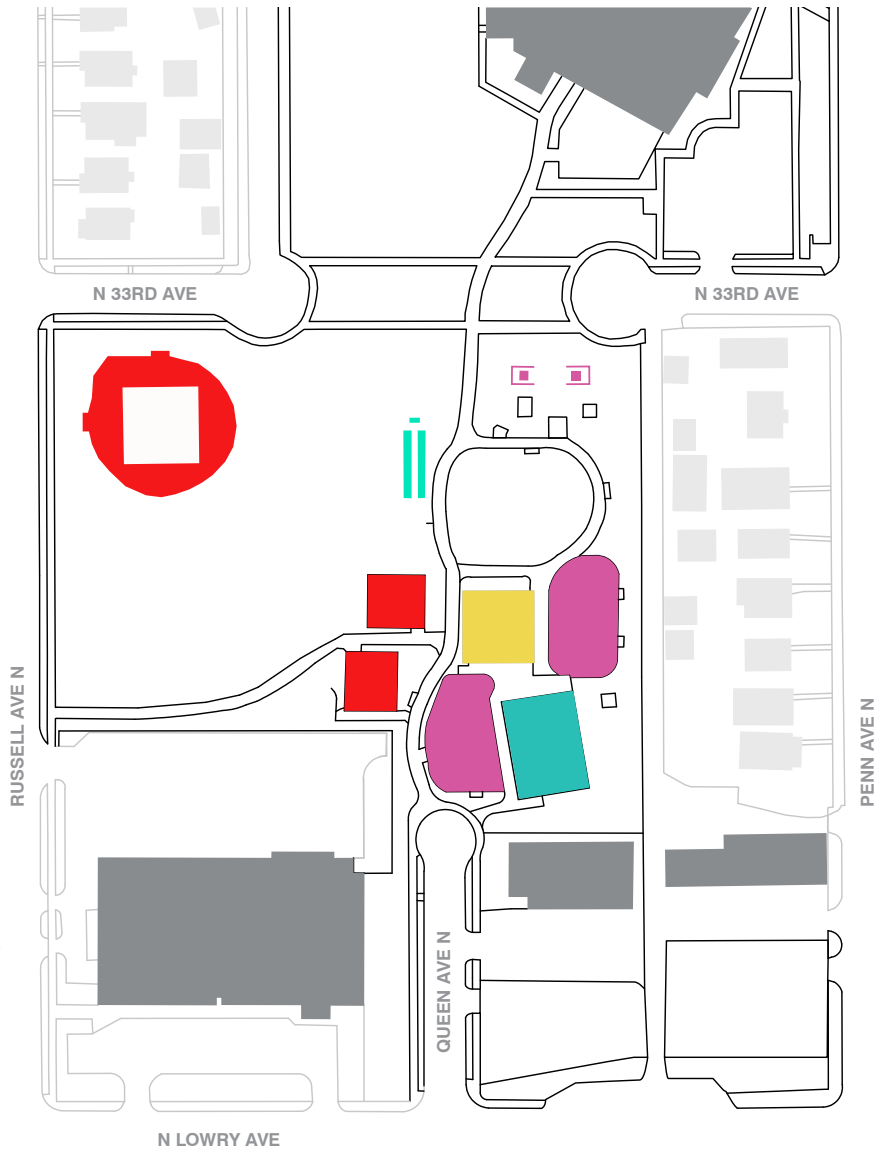


path through raingarden



raingarden near building

SITE ANALYSIS - EXISTING INFRASTRUCTURE/USE



EXISTING INFRASTRUCTURE AT CLEVELAND PARK

Cleveland Park has two playgrounds, a splashpad, two half-courts for basketball, a baseball diamond, horseshoes, shuffleboard, and a park building.

DESIGN POSSIBILITIES



sculptural paths



play areas



integrated art and play



gathering/entertainment space



community art



bike repair stations



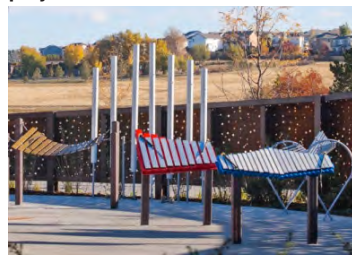
play mounds



exercise park



food trucks



outdoor musical instruments



outdoor market



movies in the park



play net



skate park



full court basketball

SITE ANALYSIS - COMPARISON TO NEARBY PARKS



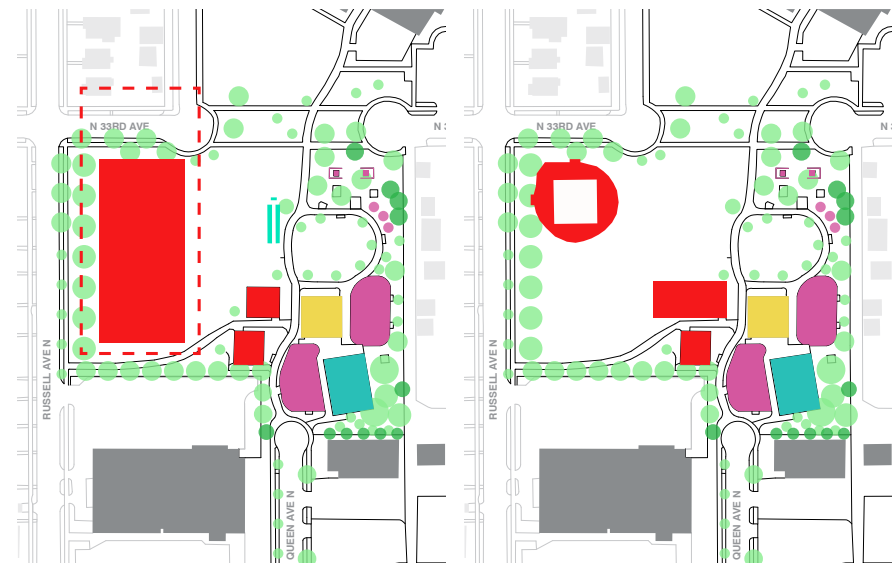
NEARBY PARK USE

Cleveland Park is smaller than all of the parks in the vicinity. This is the reason why less programming options are offered here. All of the parks that offer sporting options have a baseball diamond. The larger parks that offer indoor activities have more year-round usership.

field with a dotted red line at Cleveland Park. The second map shows the size of a full-size basketball court on the site.

The map below shows a regulation size football

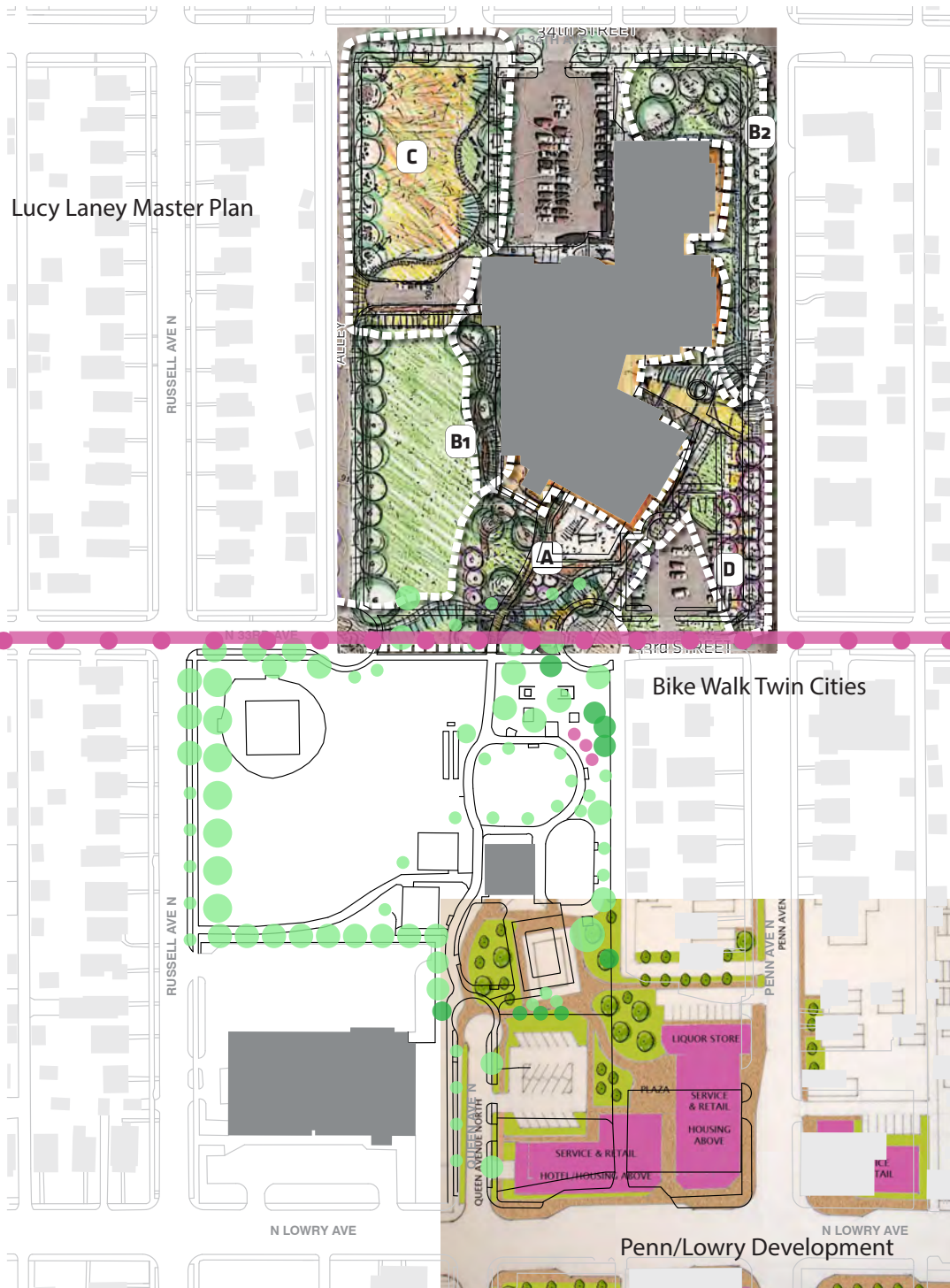
POSSIBILITIES



PARK USE NEAR CLEVELAND PARK



SITE ANALYSIS - CONNECTIONS TO FUTURE PLANS



FUTURE PLANS NEAR CLEVELAND PARK

Currently there are plans to develop the corner of Penn and Lowry as well as a bike connection proposal for N 33rd Ave. Also there is an existing masterplan for Lucy Craft Laney School with increased programming.

POSSIBLE DESIGN CONNECTIONS



connection to Lucy Laney School

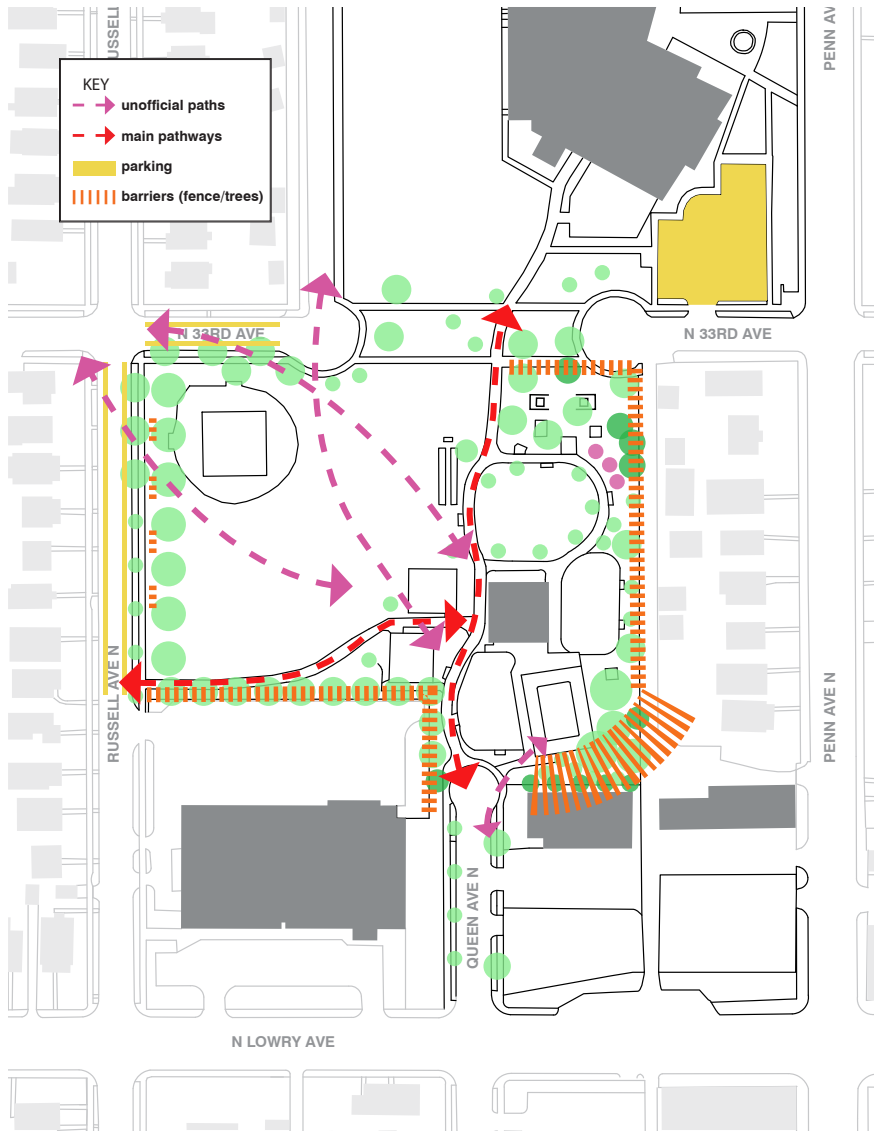


bike path between school and park



connection to Penn/Lowry

SITE ANALYSIS - ENTRANCES/CIRCULATION/PARKING

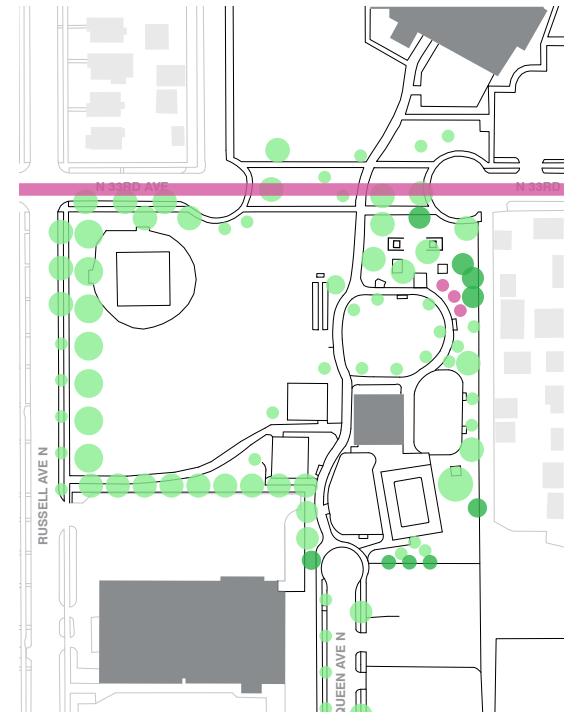
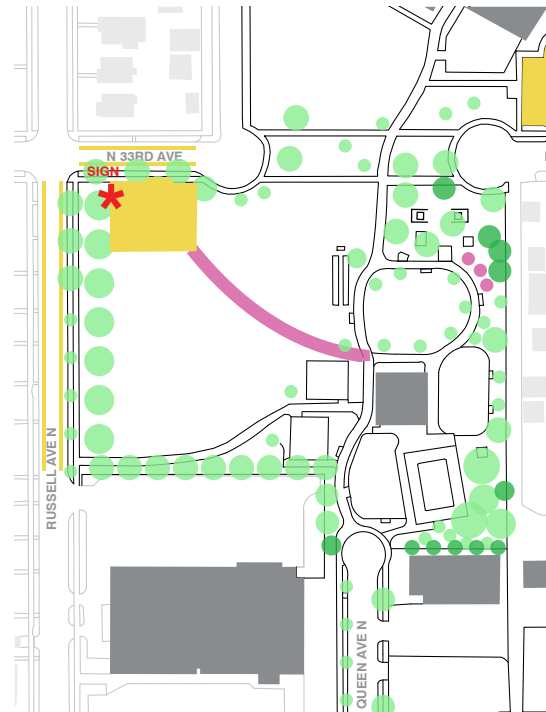


ENTRANCES/CIRCULATION/PARKING AT CLEVELAND PARK

Cleveland Park has one entrance sign between itself and Lucy Craft Laney School. Most people enter from Queen Avenue or the buslane next to the school. There is no parking on the site, only street parking on Russell Avenue. Sometimes parking will overflow to the lot at the school.

A heavy row of trees creates a separation from Penn and Lowry Avenues and the alleyway and business parking lot. The possibilities below show a parking option in yellow and pathway connections in pink.

POSSIBILITIES



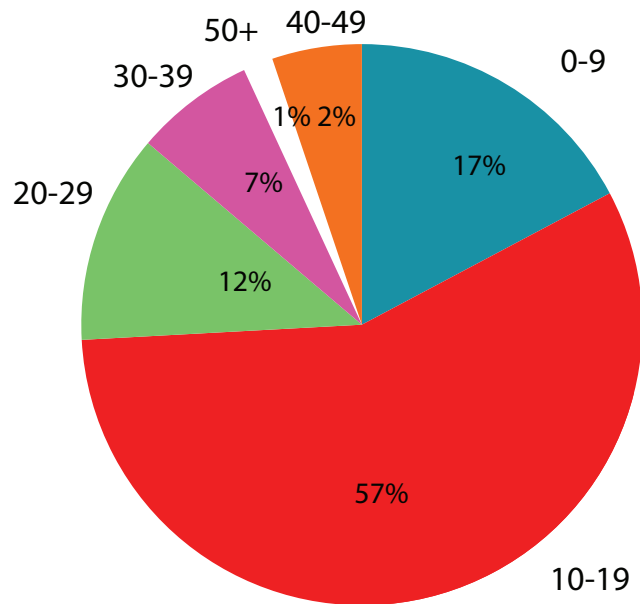
COMMUNITY ENGAGEMENT - PARTIES IN THE PARK

The Parties in the Park showed images of park options, a model of the park with moveable pieces and surveys. People were asked to write their opinions on the boards and move around pieces of the model to show how they would design the park. The exercises were meant to get people thinking about new possibilities and to be

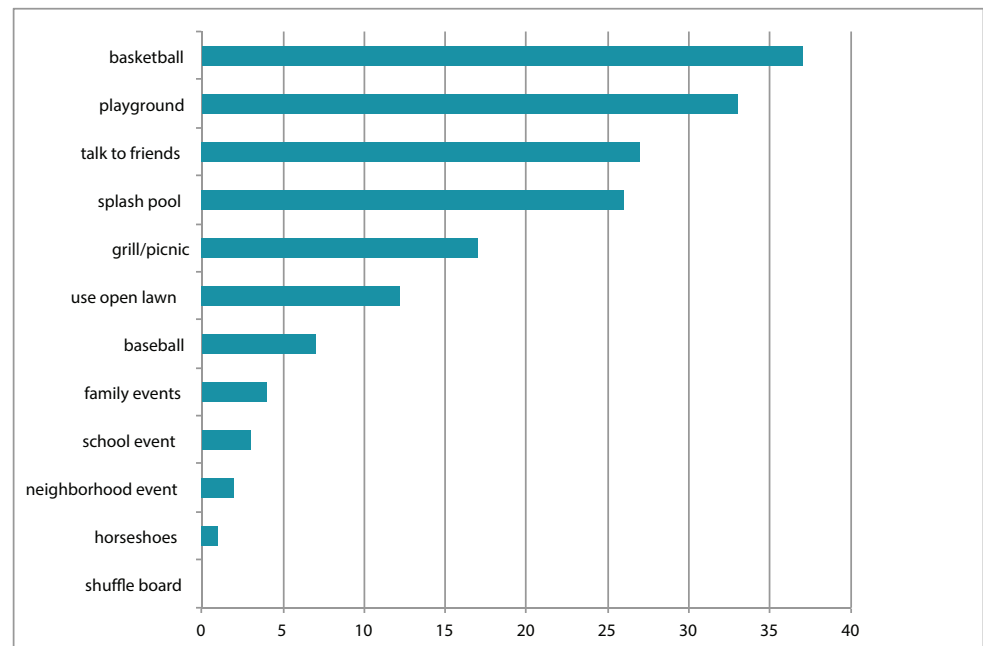
creative. The surveys discovered that the general age group for the park is between 10-19 and most people use the basketball courts or the playground, or they come to talk to friends.



AGE



WHAT DO YOU USE AT THE PARK?



COMMUNITY ENGAGEMENT - COMMUNITY MEETING

After the Parties in the Park, a few design concepts were drawn up and presented to a small focus group of community members. A summary of topics discussed during this period are listed below.

ACTIVE PARK

NEW PLAYGROUND EQUIPMENT

BASKETBALL COURTS

BIKE/SKATE PARK

HIDDEN SPACES

FAMILY SPACES

ENTRANCE

SPORTS PROGRAM

NEW PATHS

POSSIBLE CONNECTION TO PENN/LOWERY

CONNECTION TO LUCY LANEY

SEATING AREAS - FAMILY SPACES

SAFETY/LIGHTING

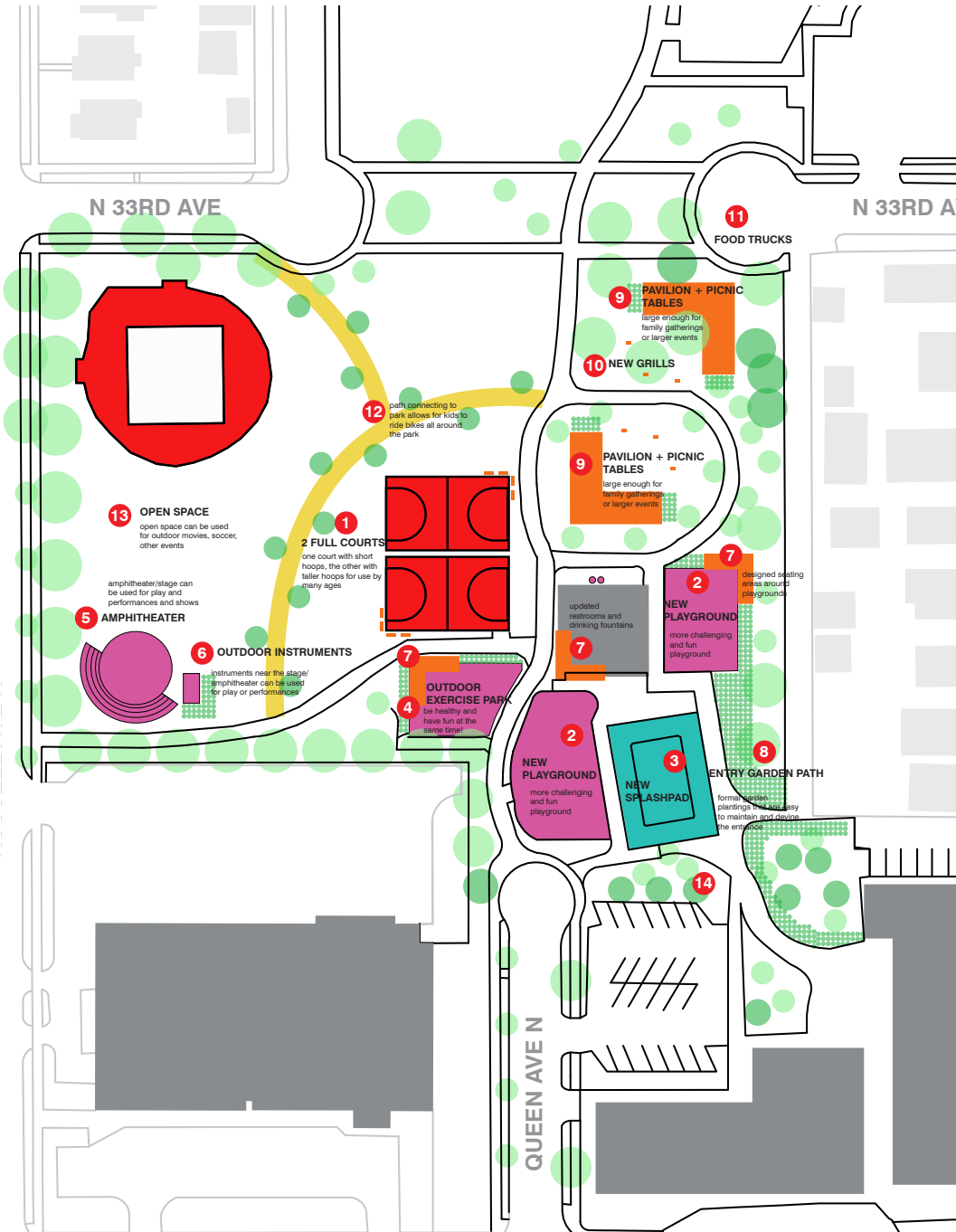
BRIGHT/COLORFUL

STAFFED BUILDING

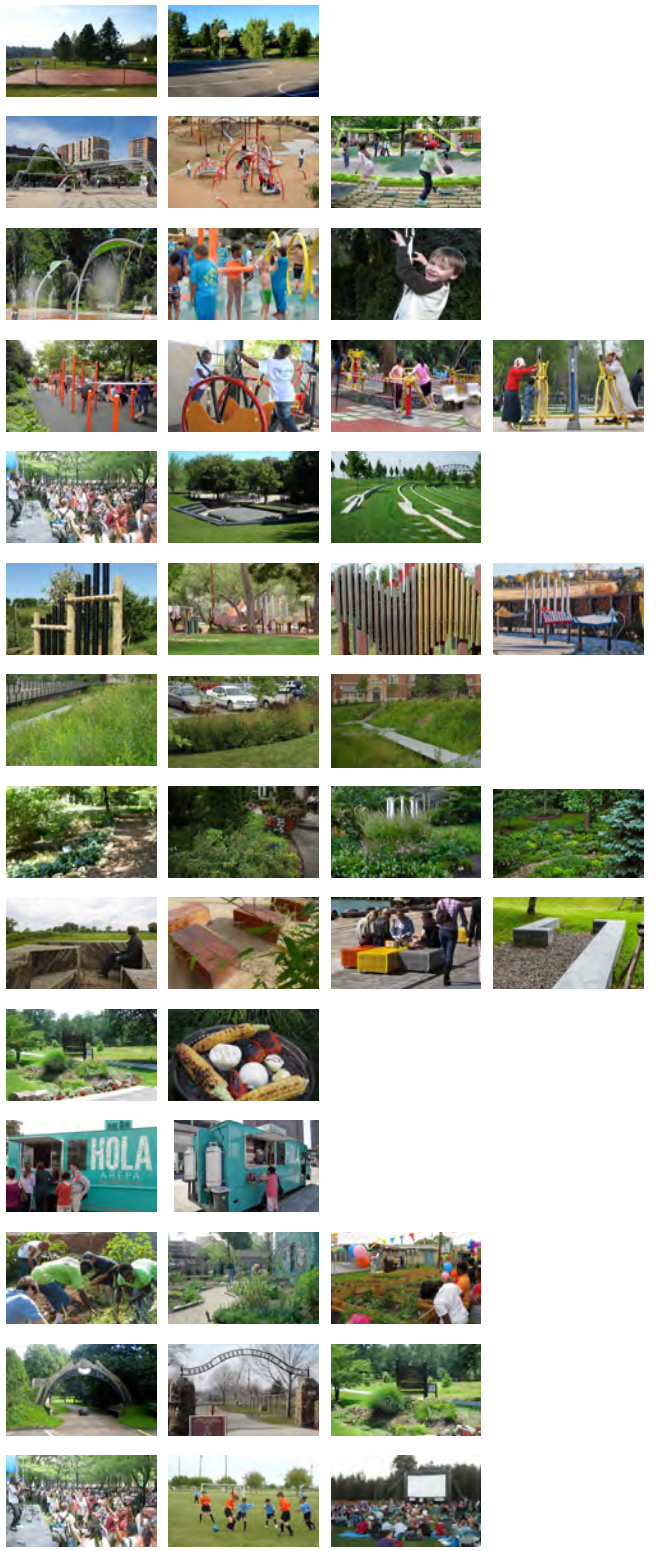
UPDATED FACILITIES (BATHROOMS, FOUNTAINS)



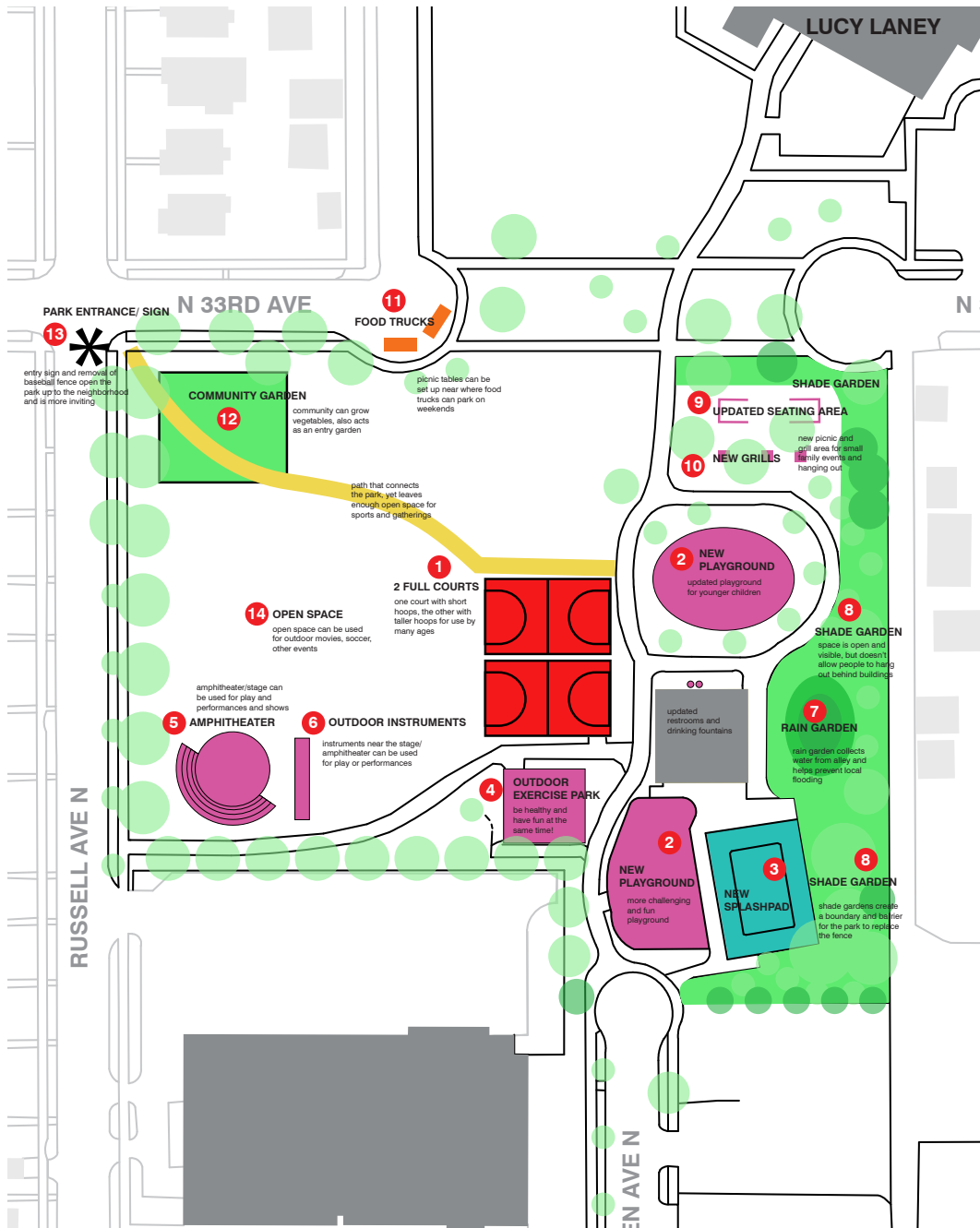
CONCEPT DESIGN 1



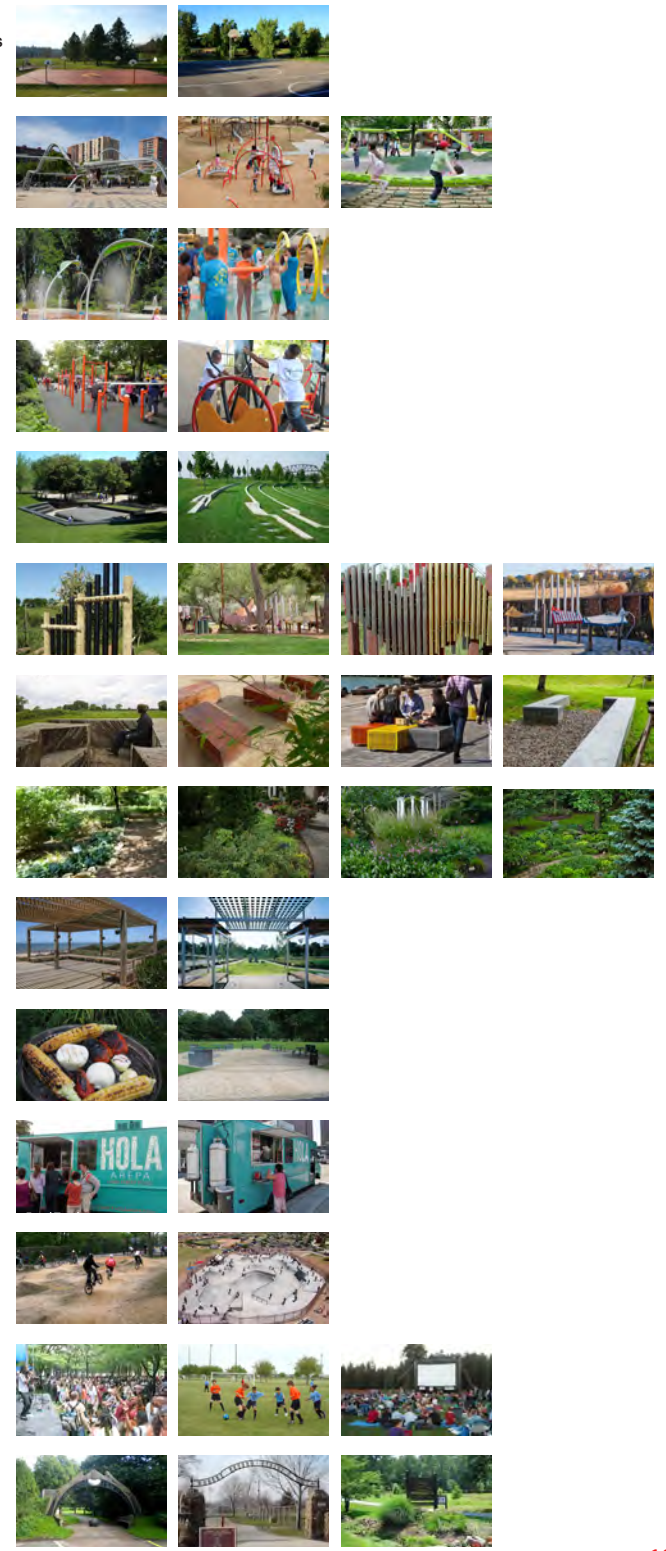
- 1** 2 FULL BASKETBALL COURTS
- 2** NEW PLAYGROUNDS
- 3** NEW SPLASHPAD
- 4** OUTDOOR EXERCISE PARK
- 5** AMPHITHEATER
- 6** MUSICAL INSTRUMENTS
- 7** RAIN GARDEN
- 8** SHADE GARDEN
- 9** UPDATED SEATING AREA
- 10** NEW GRILLS
- 11** FOOD TRUCKS
- 12** COMMUNITY GARDEN
- 13** PARK ENTRANCE/ SIGN
- 14** OPEN SPACE



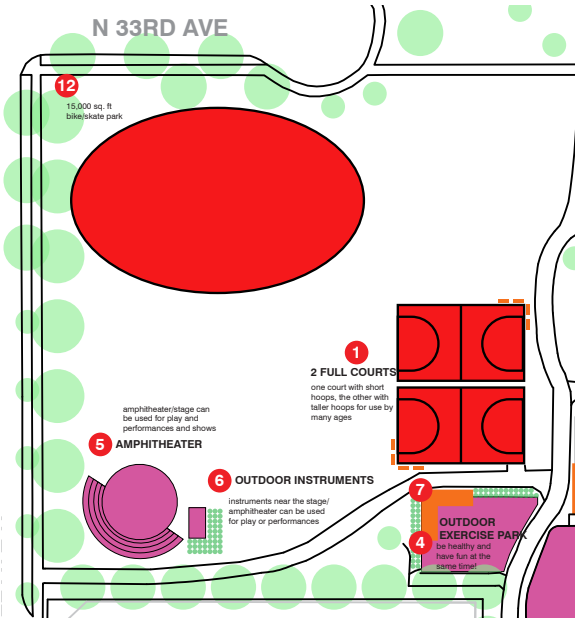
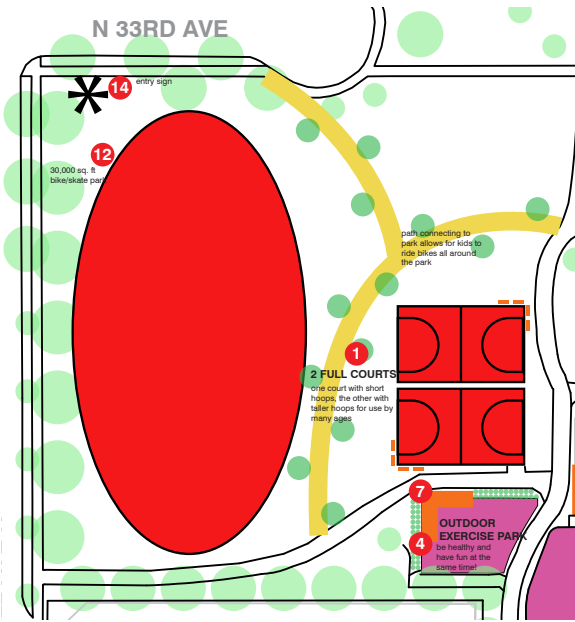
CONCEPT DESIGN 2



- 1** 2 FULL BASKETBALL COURTS
- 2** NEW PLAYGROUNDS
- 3** NEW SPLASHPAD
- 4** OUTDOOR EXERCISE PARK
- 5** AMPHITHEATER
- 6** MUSICAL INSTRUMENTS
- 7** SEATING AREAS
- 8** ENTRY GARDEN
- 9** PAVILION + PICNIC TABLES
- 10** NEW GRILLS
- 11** FOOD TRUCKS
- 12** BIKE/SKATE PARK
- 13** OPEN SPACE
- 14** ENTRY SIGN/GARDEN



ADDITIONAL CONCEPTS



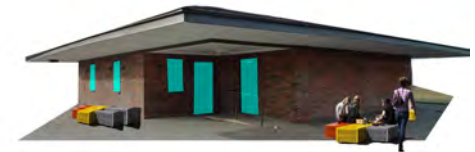
SKATE PARK



AMPHITHEATER + MUSIC + MOVIES



MOVIES IN THE PARK



SEATING AROUND THE BUILDING



NEW PAVILIONS WITH BRIGHT SEATING + NEW GRILLS



COMMUNITY ENGAGEMENT SUMMARY

GENERAL FEEDBACK FROM COMMUNITY ENGAGEMENT

The Parties in the Park and the Community Meeting were very helpful in determining what people were interested in seeing at Cleveland Park. People really expressed wanting to see an active and safe park that is a fun place for kids to come and be active while also providing a place for adults to walk through with their dogs or have picnics with the family. Also the park is described as very cut off from the rest of the neighborhood, almost hidden. There was disagreement about exactly what programming elements should stay or go. For example, some people wanted to get rid of the baseball field, others wanted it to stay, some wanted gardens, others did not. Another thought was whether or not to redesign the park from scratch or to work within the existing framework. Both ideas were presented and ultimately the final design is new while working within the existing framework. This is mainly for practical reasons, for example the location of existing water and electrical sources, and because it would be

more economically feasible.

The overall consensus for the park was that the building needed to have updated facilities, someone on staff, and also the ability to check out items, like soccer balls, movie equipment for park screenings, and other play items for the open space. People also mostly agreed on the full basketball courts. Mostly people just want a safe and active park. The final schematic design presented next has an active program, tons of new lighting and trees, more seating, a bike loop and bike path to the neighborhood, updated play areas that are more challenging, an amphitheater space and an updated BBQ/picnic area.

A final masterplan would need more participation from the community and collaboration with donors and the park board.

CLEVELAND PARK FEEDBACK MAP



KIDS DON'T OFTEN USE THE BASEBALL FIELD, ADULTS FEEL THERE SHOULD BE LEAGUES

MOST PEOPLE WOULD LIKE TO SEE FULL COURT BASKETBALL OFFERED

PLAYGROUND IS WELL USED, KIDS WOULD LIKE MORE OF A CHALLENGE

SMALLER COURT AND SHORTER HOOP IS NICE FOR THE YOUNGER PLAYERS

NO ONE USES THE SHUFFLEBOARD GAME

GRILLS ARE TOO OLD, NO ONE PLAYS HORSESHOES, SOME DON'T NOTICE THIS CORNER

EMPTY SPACE, UNDERUTILIZED

BUILDING NEEDS STAFF PERSON AND UPDATED BATHROOMS/FOUNTAINS

PLAYGROUND IS HIDDEN BEHIND BUILDING, PREFER KIDS TO PLAY IN OPEN

SPLASH PAD IS WELL USED IN THE SUMMER

PLANS FOR APARTMENT BUILDING ARE NOT YET KNOWN - MAY BE REDEVELOPED

FINAL SCHEMATIC DESIGN

LUCY CRAFT LANEY SCHOOL



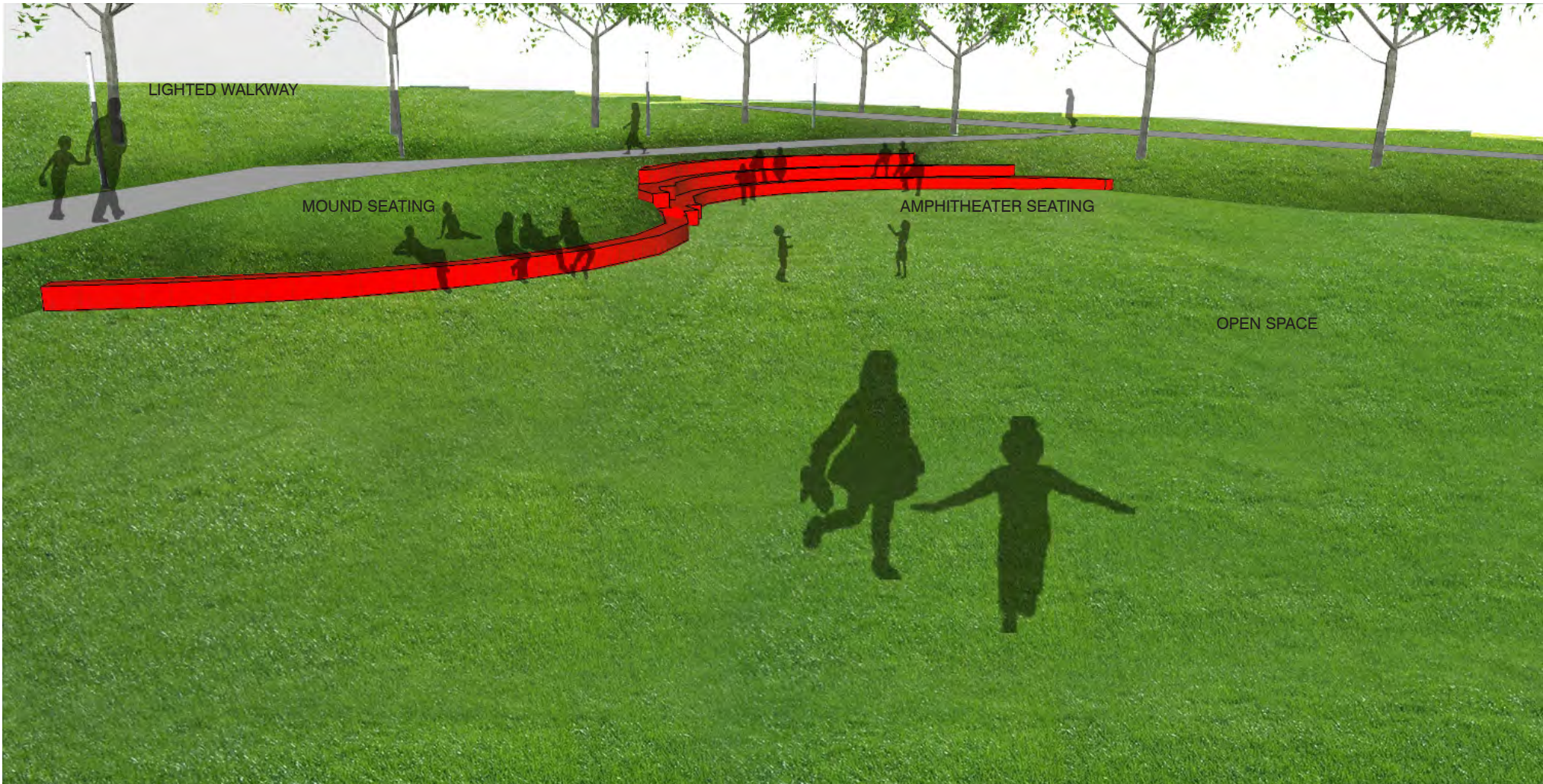
- 1** 2 FULL BASKETBALL COURTS
- 2** EXERCISE/PLAY PARK
- 3** NEW SPLASHPAD
- 4** LITTLE KIDS PLAYGROUND
- 5** AMPHITHEATER AND MOUND
- 6** UPDATED FACILITIES - STAFFED
- 7** PAVILIONS
- 8** SEATING AREAS
- 9** PAVILIONS + PICNIC TABLES + NEW GRILLS
- 10** BLUE BIKE LOOP
- 11** TREE-LINED PEDESTRIAN "PARK-STREET"
- 12** GREEN BIKE PATH
- 13** OPEN SPACE
- 14** UPDATED BASEBALL FIELD

FINAL SCHEMATIC DESIGN

AMPHITHEATER AND MOUND SEATING

The amphitheater is a red sculptural element in the park that allows kids and adults to host performances (small and large) and also provide an area for sitting while leaving enough open space for various types of programming. In the summer the open space could be used to screen movies at the park, to play sports, or to use

possible play equipment that could be checked out at the park building which is recommended to be staffed. The amphitheater is also a red sculptural piece that provides seating on the mounded area as well. Of course kids can also play on this amphitheater and mound.



FINAL SCHEMATIC DESIGN

PARK STREET + BLUE BIKE LOOP + PLAY AREA

A large pedestrian “street” can open up the park and connect it to the rest of the neighborhood while offering a larger “walk-through” space and an opportunity to have a bike loop and additional seating. All playground equipment is updated and more challenging. Specific

playground equipment needs to be determined based on more community feedback. Many people suggested they would like to see more opportunities for kids to bike in the park. The “Blue Loop” circles around half of the park and connects to the sidewalk and other bike path.



FINAL SCHEMATIC DESIGN

SEATING AND UPDATED PLAY AREAS

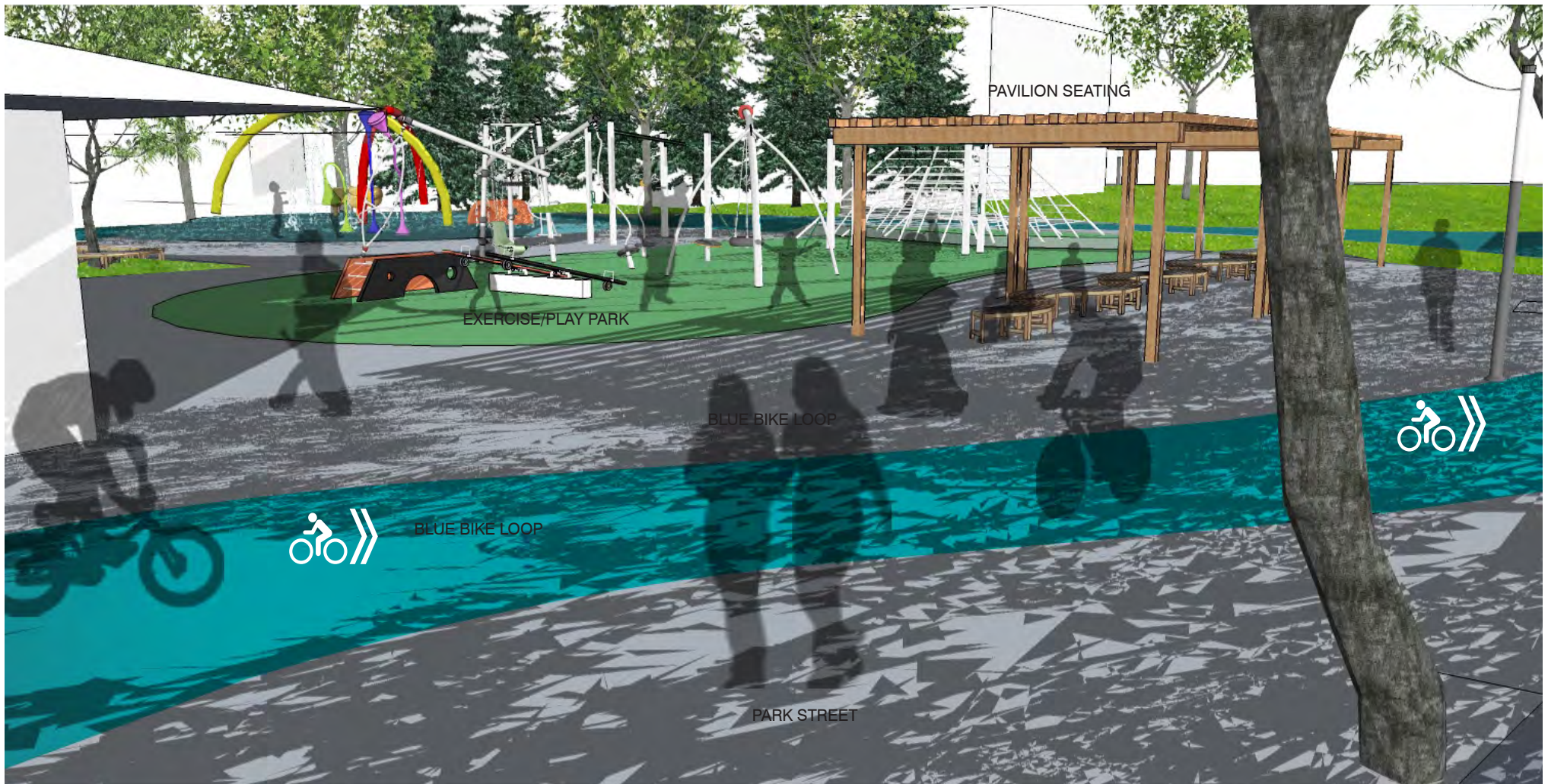
Many people expressed that they would like to see a more active park as well as have a family friendly park. More seating is offered here for kids and families.



FINAL SCHEMATIC DESIGN

BLUE BIKE LOOP + PARK STREET

The "Blue Bike Loop" is painted onto existing paths while the path is widened to create a larger pedestrian street. The path can be large enough for walking dogs, playing, and riding your bike.



FINAL SCHEMATIC DESIGN

TWO FULL COURTS + SEATING + KID'S PLAYGROUND

Two full courts are added in this plan. One has a hoop for adults, the other has a hoop size for younger kids. Plenty of seating with shade is given so people can watch a basketball game while also watching their kids at the park. All of

the play areas are along one strip and can be seen from the center of the park.



FINAL SCHEMATIC DESIGN

BBQ AREA + BLUE BIKE LOOP

An updated BBQ and picnic area with multiple picnic tables and grills spread throughout the northeast corner of the site. The "Blue Bike Loop" cuts through this space as well, which creates a very active environment.



FINAL SCHEMATIC DESIGN

GREEN BIKE PATH + FARMER'S MARKET

The "Green Bike Path" connects to the "Park Street" which is large enough to host community events, such as a farmer's market or group events. Bicycle parking is provided off the "Green Bike Path" which connects to the rest of the city. Kids can ride their bikes to school at Lucy Craft Laney and use this space as well.



HOW TO GET INVOLVED

GET INVOLVED WITH THE CLEVELAND PARK PROJECT!

Are you interested in being involved with the making this community vision for Cleveland Park a reality?
Contact the Cleveland Neighborhood Association and learn how you can help make our community dreams come true.

Call **612-588-1155** or email **cna@clevelandneighborhood.org**

We're located on the south side of the Lucy Laney school building at **3333 Penn Ave north**. CNA also organizes residents around community development, crime and safety, youth initiatives and community events. Contact us to get involved or learn more at **<http://clevelandneighborhood.org>**

