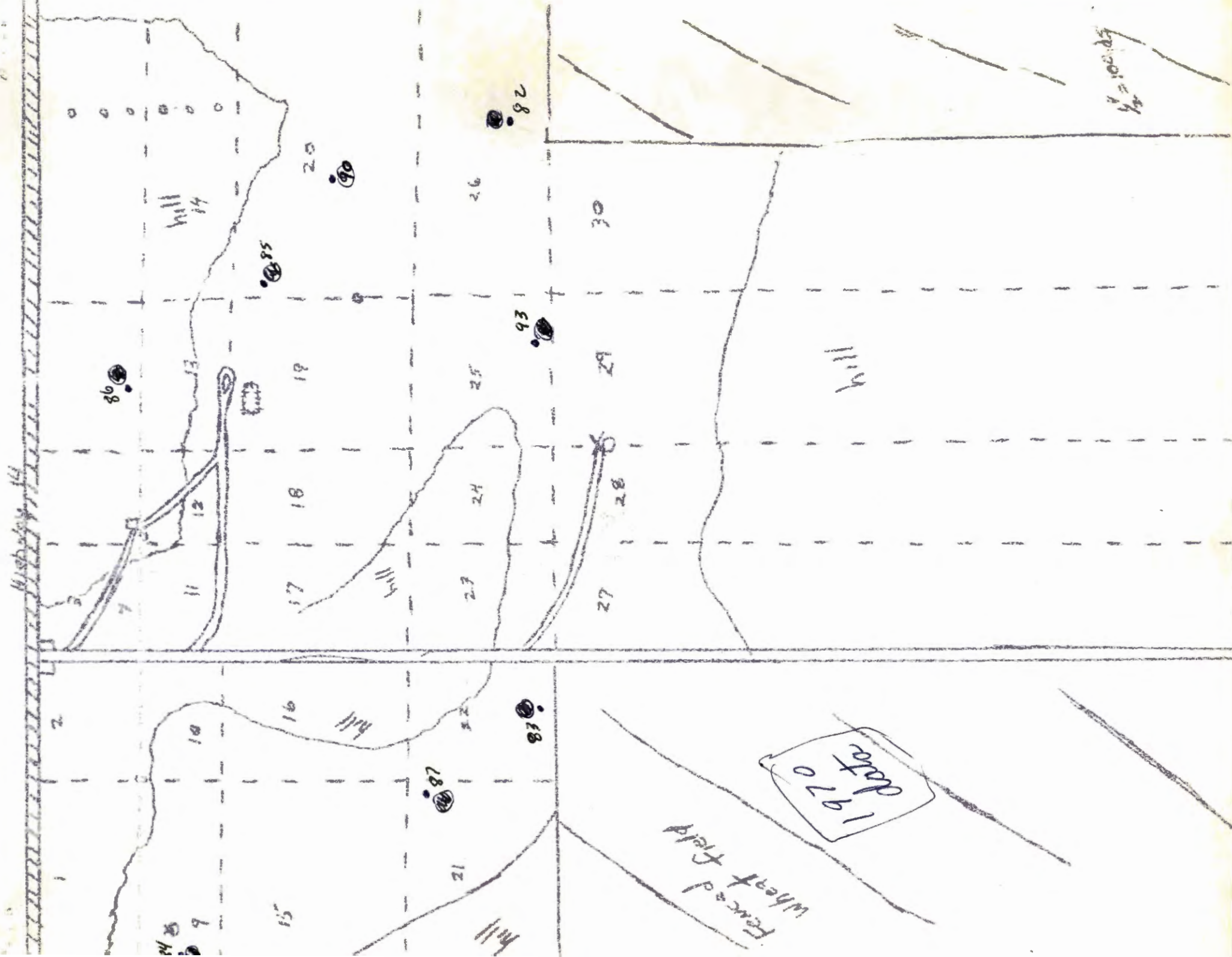


This supplemental material supports
the 1973 PhD dissertation of Walter D. Graul entitled:

“Breeding adaptations of the mountain plover: (*Charadrius montanus*)”

A copy of the dissertation and other documents may be found in the
University of Minnesota’s Digital Conservancy
in the [Mountain Plover Research collection](http://hdl.handle.net/11299/169740)
at <http://hdl.handle.net/11299/169740>



1970 data

Wheat field

hill

hill 14

hill

hill

5000
4

Mushy 14

2

86

9

86

13

11

12

15

16

17

18

19

85

20

90

87

21

23

24

25

26

88

93

92

27

28

29

30

nest # 93

May 25 - 1:20pm - adult standing over 1 egg (good cow chips) - north
11 paces from fence pole 9 (piece of wire near) - SW corner
of study area (main). dove within 15 feet. feigned
slightly, but quietly.

May 26 - 8am - no bird around, egg has dew on it - looks abandoned. put
line up.

11:45am - nest came - 2 adults 30 yds away, one gave horizontal throat.

May 27 - 10:40am - no bird around, egg was fresh & hadn't been moved.
against a small pile & lined w chips. slope = 0

(Lyde said a big hail storm last week (Fri) wiped out several dove
nests, 1 plover nest, and killed one Horned Lark on the nest.)

Nest 89

26 May - 4:50 pm - flushed an adult in a downpour. set trap & it returned immediately to me close (30 yds). this is just west 150 yds from Keota road along fence - near old cattle windbreak - 9 poles in - one ~~inch~~^{inch}. 3 eggs. piece of wire just south of nest in line with pole 9. caught the bird and put red on its breast & back. At 5:20 pm - red was seen nest & dove off another bird.

27 May - 8:20 am - red on - ran off nest when I was 60 yds away along road.

1:10 pm - red on. ; 4:15 pm - red on (starting to rain).

5 pm - red still on in light rain.

7:45 pm - red on.

10:00 pm - pitch dark - approached within 30 yds with headlights and bird stood up at nest, but didn't move - was flinching as though it might fly. Was red on breast - no doubt that only one incubates. ~~checked~~ checked at mid. etc. get egg in the morning.

28 May - 5:45 am - red on

12:30 pm - red on - chil 15 days - nest - against pile, lined in chips. buffalo flat, slope = 0.

peel about 10-15 days ago