



The MOCCASIN

UNIVERSITY OF MINNESOTA BULLETIN

1967-68

THE MOCCASIN, HANDBOOK FOR NEW STUDENTS

Compiled and Edited by the
Orientation Office
Office of the Dean of Students
19 TNM
University of Minnesota
Minneapolis 55455

UNIVERSITY OF MINNESOTA BULLETIN

Vol. LXX, No. 14

July 15, 1967

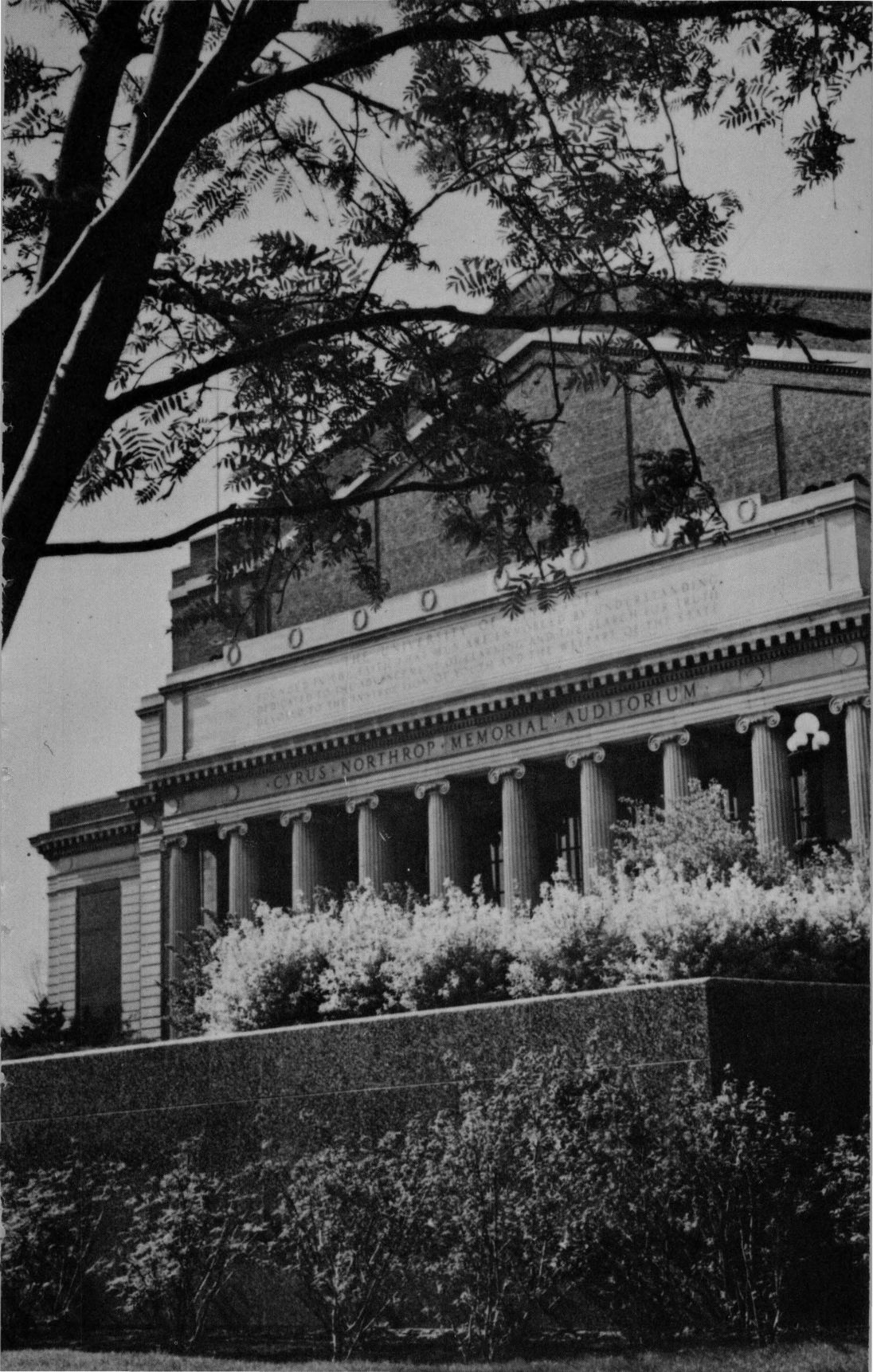
Published semimonthly January 1 to December 15 inclusive. Second-class postage paid at Minneapolis, Minnesota. Send change of address, notices and other communications to Office of Admissions and Records, University of Minnesota, Minneapolis, Minnesota 55455.

The contents of this bulletin and of other University bulletins, publications, or announcements are subject to change.

CONTENTS

Your University	4
Schools and Colleges	20
Orientation	32
Student Services	38
Cultural, Religious, Social	58
Student Government	68
Student Conduct	78
About Athletics	82
University Calendar	92
The Staff	97

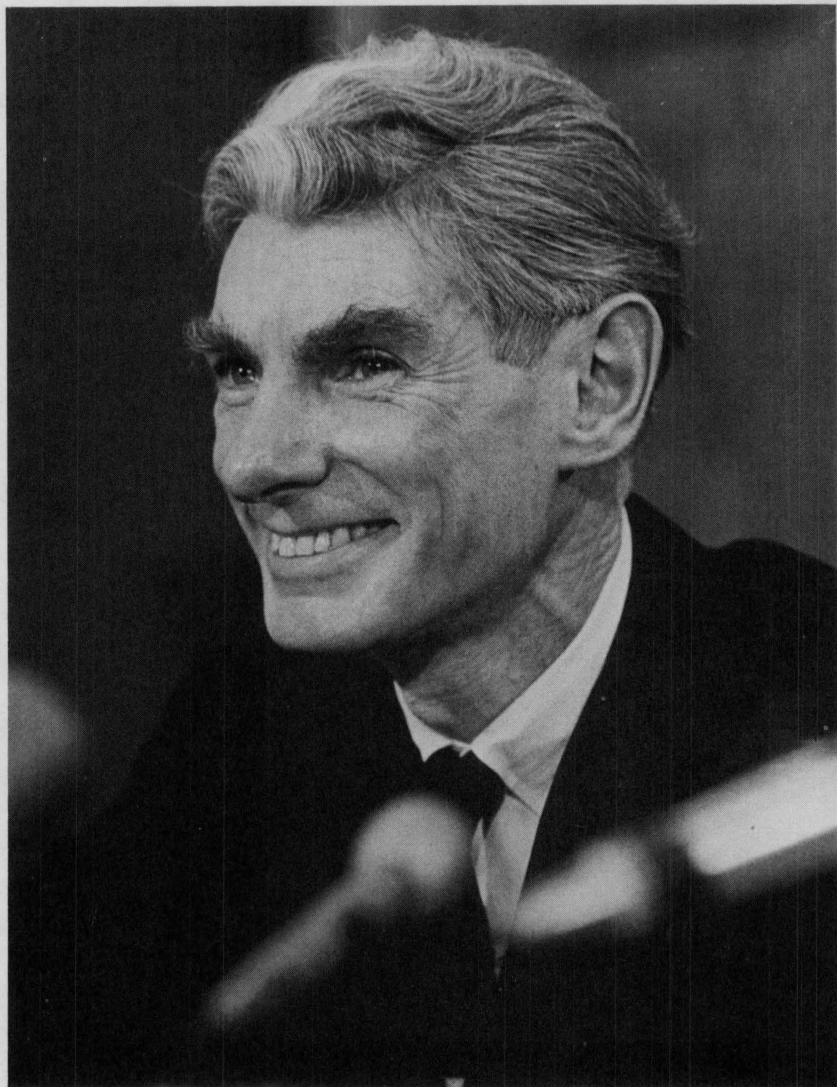
YOUR UNIVERSITY



CYRUS NORTHROP MEMORIAL AUDITORIUM

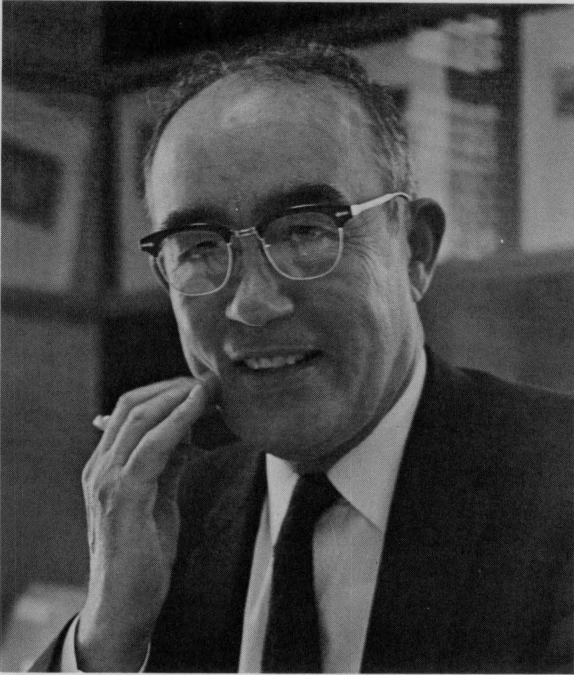
THE UNIVERSITY OF MICHIGAN UNDERSTANDING
THE CIVIL WAR AREAS HELD BY UNDERSTANDING
THE UNITED STATES AND THE SEARCH FOR TRUTH
BELIEVED TO THE ADVANCEMENT OF KNOWLEDGE AND THE WELFARE OF THE STATE

The President



DR. MALCOLM C. MOOS
President

The Dean of Students



You are now in a community known throughout the world for its dedication to scholarship and the search for truth and understanding. I am personally very happy with your decision to join this community. I encourage you to participate fully and yet selectively in our intellectual and cultural activities on the campus of Minnesota.

This handbook has been prepared to help you and your parents in meeting the challenge of the University. As a student at Minnesota you will have rich opportunities for intellectual and personal development. Our University, if one can find any singleness among its diversity, is a shared task, derived from common respect, admiration and belief in the potential worth of human intelligence. To join our university is to make personal commitment to this ideal.

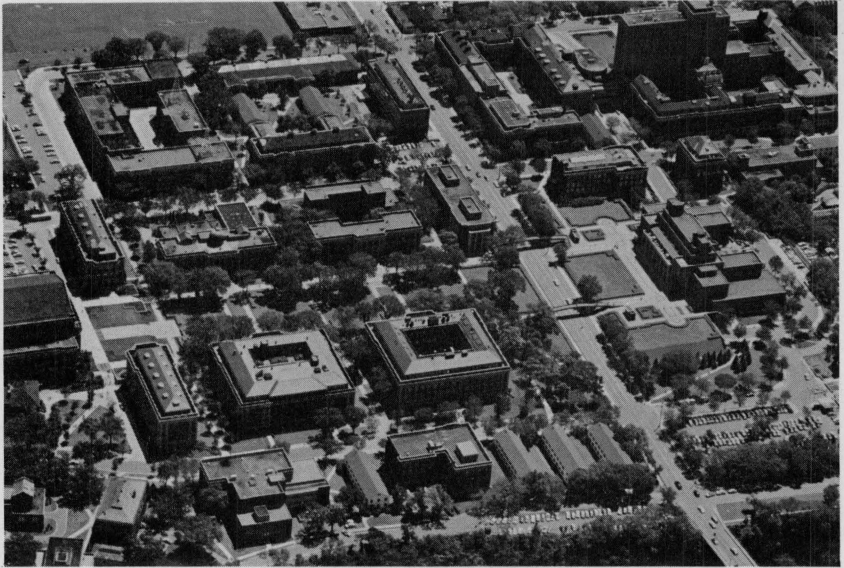
Perhaps never again in your life will you have such an opportunity to dedicate yourself to learning and to the exciting examination of ideas. I am confident that you will make the most of your opportunity for full development into maturity.

Cordially yours,

A handwritten signature in cursive script that reads "E. G. Williamson".

E. G. Williamson
Dean of Students and
Professor of Psychology

The Faculty and Staff



To Parents of New Students:

Your sons and daughters will soon begin a very important experience in their lives, becoming University students. No doubt you have long planned for their University education, and now we of the staff at the University of Minnesota want to do our part in making their experience successful.

You may be sure that the University recognizes its responsibilities for giving your children a sound preparation for the future, not only as professional men and women but as intelligent citizens. This preparation is based upon a deep understanding of the past and the development of one's ability to assess and weigh facts, to discard fallacies, and to reach valid conclusions. Integrity, a sense of values, loyalty, and responsibility — these too should be developed by a University education, for the University of Minnesota is more than a large school; it is a community in which your children become active citizens.

This community is a warm, friendly one. From a student's first day on the campus every effort is made to help him enter happily and successfully into University life. Professional people interested in his welfare — doctors, counselors, teachers — are always available to help with any physical, emotional, or scholastic problem.

The Moccasin describes the University community and its services so that you parents, as well as the new students themselves, may become better acquainted with your University. We hope that during the years to come you will visit it and see it in action.

We of the University staff are proud and deeply appreciative of our opportunity to serve you the parents, by educating your sons and daughters.

THE UNIVERSITY STAFF

The University



You are about to enter a new kind of experience here at Minnesota. For most of you, the experience will be a challenging and enjoyable one. You will find that the University is a friendly place, where you will be given the opportunity to grow both intellectually and socially according to your own potential.

Life at a great University means exciting and happy experiences among great minds. Minnesota's great minds are those of its faculty and the great minds of times past whose thoughts remain ever present in the thousands of scholarly volumes on the shelves of its libraries.

The potency of greatness, however, lies in the minds with which each teacher works — the receptive, hopeful mind of the student — you.

Permeating the University of Minnesota campus are its great achievements in research and discovery. Courses of study range from work in undergraduate degrees to that for the Doctorate of Philosophy. Minnesota's learning experience is enriched by new development and discovery in its own classrooms, laboratories, libraries, and study halls.

The wide-range scope of the University, embracing as it does all major branches of knowledge, is also one of the University's great achievements. Minnesota offers you a broad horizon which will be your future — the operating room, the courtroom, the newspaper desk, the dental office, the classroom, the research laboratory, the experimental farm, the home. In providing for its students, the University guides without stifling.

The genuine friendships you will share with students and professors will be of a life-long value. In meeting and knowing others from every state and many foreign countries you will share in the richness of varied backgrounds, cultures, and traditions. These are only a few of the exciting experiences the University of Minnesota offers you as one of its students.



A professor, honored and respected by distinguished colleagues and students alike, leaves his door ajar inviting you, the student, to a casual chat. There is opportunity to encourage the free, relaxed exchange of ideas between faculty and student — an exchange valued by both.

As a student, you can serve your University by devoting yourself to your coursework and carrying your responsibilities of citizenship in activities and organized student affairs.

Often a part of the greatness of a university is dependent on its geographical site. Thus, the University of Minnesota owes a part of its greatness to its location in the Twin Cities. Cultural, professional, and governmental benefits are within easy grasp of the Minnesota student who, while maturing in the atmosphere of the campus, adds to and encourages the greatness of the Cities.

This is the life of a great University — this is the life awaiting you at the University of Minnesota.

History

The University of Minnesota began in 1851, when the Legislative Assembly of the Territory of Minnesota established its charter, seven years before Minnesota became a state. At that time the Sioux were still in the habit of setting up their tepees in the village square of St. Anthony.

The University began as a two-story preparatory school where, for four dollars a quarter, a retired clergyman taught reading, writing, and arithmetic to a score of village children. When the Indians packed up their tepees, the University packed up its few possessions and moved to its present site whose charm, according to the ST. ANTHONY EXPRESS, "surpassed that of the Hudson."

As prospective students marched off to join the Civil War cause, loyal University supporters were erecting the first University building, Old Main. Subsequent additions made that building a monstrosity of sprawling, unplanned wings. When a committee of the Board of Regents visited the building, they found its only inhabitants to be wild turkeys and even wilder squatters.

The University, closed during the Civil War, reopened in 1869 with the colorful William Watts Folwell as president. "Uncle Billy," as he was known to students, presided over the University's first commencement in 1873. The graduating class of two hardly foretold the 7,000 students in last year's class. Folwell developed the University and, in spite of pressing duties, found time to walk from door to door with students to see that they found proper housing. He knew all of his students personally. The typical student's morning began with Uncle Billy's "Good Morning, John T. Jones," followed by a brisk salute.

College life in those days was often more exacting than life in the everyday work-world the student faced upon graduation. All students were required to report for chapel at 8:30 a.m. and failure to appear resulted in demerits. There were no classes on Monday for fear the students might be tempted to violate the Sabbath with attention to such secular matters as studying. And for only three dollars a term, the rudimentary comforts of "stove, mattress, bedstead, washstand, table, bookcase, and chairs" were provided.

The University's next president, Cyrus Northrop, devoted his administration to enlargement of the University's departments, but he was not above interest in student affairs. When the campus was threatened with the indecorum of a parade in nightshirts, a single word to the group's leader led him to call off the action. "About those nightshirts," the leader said, "we can't do it. I proposed the plan but Prexy doesn't like it and what he says goes."

In spite of faculty squabbles and student antics, the University was becoming a well-known educational institution with many of its students having achieved highest distinction in the academic world. When a Columbia University professor was shown a list of famous Minnesota graduates he asked, "Is there anyone who hasn't been at Minnesota? Is it some kind of divine law?"

With the coming of World War I, it seemed that there would be many prospective students who would never attend the University. After the

United States declared war, the male population on the St. Paul campus alone dropped from 400 to 30. Fraternity houses on University row were turned over to matrons who rented "rooms for girls." And the University prepared for some 6,000 men enrolled in the Students Army Training Corps. Partly because of the training schedule (the men were required to rise at 6:30 a.m. and march through the city streets of Minneapolis before breakfast), the soldiers slept straight through their classes, in the library, and over their books.

The decades following the 1920's were full of University campaigns. One of the best known and most successful student campaigns, the fight against compulsory military training and drill, began in 1931. For sixty years it had been regarded as an inescapable duty of the land-grant college to require students to take drill. When a request to use Northrop Auditorium for a mass meeting protesting compulsory drill was refused, the meeting took place on the steps of the Auditorium with Governor Floyd B. Olson as its chief speaker. Largely because of the increasing student pressure, the Regents abolished compulsory military drill in 1934.



After the Pearl Harbor incident in 1941, more than half of the students on the campus left to join the war cause. With its depleted ranks, the University held little hope that football teams would repeat the brilliant records of 1934 and 1935 when the Golden Gophers had gone undefeated, and 1936 when they met defeat only once. Coeds held the reins of many college activities. A MINNESOTA DAILY editor-in-chief appointed a woman "service editor" to write articles building up morale of service-men on campus and a woman sports editor, who covered almost every

game, much to the disgust of the men in the press box. President Walter Coffey kept the University functioning smoothly while making plans for the increase in enrollment that would come at the end of the war.

The G.I. enrollment at the end of the war surpassed all predictions. The president, J. L. Morrill, found himself again adding plans for the never-ending program of expansion, culminating in the West Bank Campus. Morrill also was concerned with the University's relations on the national-international level. Research brought the University further prominence and led to the conquest of brucellosis, the development of methods of taconite processing, and the much discussed Multiphasic Personality Inventory. In the international area, the University in the early 1950's began a recently completed collaboration with Seoul National University to rehabilitate and modernize the educational system of South Korea.

Students become more aware of their student government and, in 1959, created the Minnesota Student Association to take the place of the old All-University Congress.

The University faces the 1960's confidently. It is an institution far different from the two-story prep school in St. Anthony. The University



has matured to the point that its dedication is not only to the principle that education must open wide the door to opportunity but that education must keep the door open. Only in one respect does the University in 1966 resemble the University in 1851, and that is in its devotion to the instruction of youth, to the healthful, social, intellectual, and ethical development of the individual, to the discipline and exercises of his mind — “in the faith that men are ennobled by understanding.”

Regents

The University of Minnesota, as a state university, receives financial aid from the taxpayers of the state. However, unlike many universities, Minnesota has a safeguard which has enabled the University to become one of the finest institutions of learning in the world. That safeguard is the Board of Regents.

The University Board of Regents is a non-partisan, non-paid agency created by the legislature to govern the University. The Board has the major responsibility for establishing University policy and supervising its operations. Because the ultimate decision-making power lies within the Board of Regents and not the legislature, Minnesota has been able to maintain an atmosphere of education essentially free from outside control. Our Board of Regents has served the state and the University well.

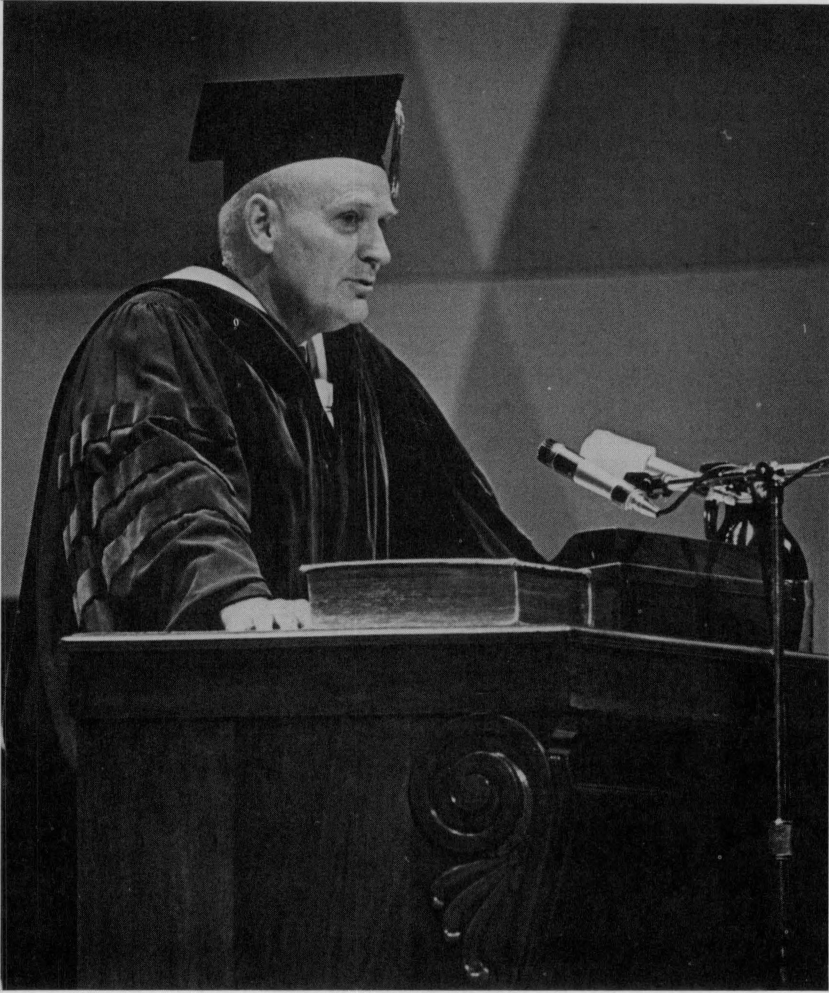


Traditions

For years after a student leaves the University of Minnesota, he carries with him rich memories of campus experiences, friendships, and the part he played in keeping the traditions of the University.

Traditions serve as the outward expression of loyalty expressed in a variety of ways: in the tremendous crowd that fills Memorial Stadium, in the thousands of hours students devote to university and community projects, and, most of all, in the reputation for scholarship that Minnesota maintains.

A few of the traditions developed at Minnesota are described in the following section:



The University of Minnesota has always been famous for the outstanding scholars among its graduates. Forty-six scholastic societies at the University maintain this tradition. Almost every one of the professions for which training is offered in the University has organized an honorary society recognizing leaders in its field.

Cap and Gown Day

Cap and Gown Day was so named, in 1922, because on that day graduating seniors wore their academic robes for the first time at a convocation honoring those of high scholastic attainment. Activities of the day are not limited to seniors — many of the leadership and scholarship so-

cieties announce the students elected to membership. During the day's ceremonies, a number of scholastic awards are presented to outstanding students.

Bell Chimes

Of all the traditions of the University campus that give it personality, perhaps the outstanding one is the Frances Miller Brown memorial carillon.

Every evening from 5:00 to 5:30, the bells ring up the Mall from speakers on Northrop Auditorium, while pedestrians below pause or stop to listen.

For half an hour each day the University seems to slow down and become nostalgic. For those who are fortunate enough to be on campus at this time each day, the bells are a tradition; for others they are a periodic surprise. But for everyone the bells are memorable.

The Seal

The seal has this story to tell: the antique lamp represents the metaphysical sciences; the telescope, the physical sciences; the plough, the industrial arts; and the pallet with brushes, the fine arts.



The original design by the Reverend George Leonard Chase, Warden of the Seabury Divinity School, had minor changes made in 1939, but the basic symbols remained the same in the process of "modernizing". The inscription "University of Minnesota" was changed to "Regents of the University of Minnesota" and was adopted May 9, 1939. On March 8, 1940, the Regents voted to approve a color arrangement of old gold and maroon on the seal. The official copies of the color design are kept in the University Archives. Only official papers have the seal affixed today as opposed to all letters in the Folwell era.

All-University Recognition Banquet

Each year the students on both the Minneapolis and St. Paul Campuses give recognition to their student leaders at the All-University Recognition Banquet, which is coordinated by the Freshman Cabinet of the Minnesota Student Association. Three groups of awards are presented by the students of the University: the Order of the North Star, the Order of the Gopher, and the Order of the Ski-U-Mah. In addition, special awards are presented to staff members who have made outstanding contributions to the education of students.

Little Red Oil Can

This award is given in recognition of service and leadership on the St. Paul Campus and is one of the highest activity awards on the St. Paul Campus.

The Cauldron Fund

The "Cauldron Fund" had its beginning in 1938. Seniors on Cap and Gown Day threw money into a cauldron to establish a class fund. The money was to be used as a reunion fund five years later and to publish a class directory each five years hence. Seventy percent of the money remaining after 1943 was to be given to the Minnesota Foundation as a scholarship fund. In 1950 the Cauldron Fund was used entirely for freshman scholarships and has been used in this way since that time.



Why Gopher?



There has been a good deal of bantering whether Minnesota's state nickname, "The Gopher State", is not a misnomer; and whether the animal we have been calling a gopher is, in reality, only a thirteen-striped ground squirrel, abundant in these parts.

Whether it's worth going to the trouble of making a social distinction between the gopher and the ground squirrel, we're not prepared to argue. The fact remains that since 1857, Minnesota has been identified as The Gopher State, and it seems unlikely that any upstart of a ground squirrel will ever displace the now enshrined gopher.

Reading in Charles E. Flandrau's book, *The History of Minnesota and Tales of the Frontier*, published in 1900, we find that indeed there was another animal under consideration in 1854 or '55. At that time the settlers discussed whether they would call Minnesota the Beaver State or the Gopher State. The name Beaver State, he says, "seemed to have the greatest number of advocates, but it was always met with the objection that the beaver, although quite numerous in some of our streams, was not sufficiently so to entitle him to characterize the territory by giving it his name."

While this debate was in progress, the advocates of the beaver spoke of the territory as the beaver territory, but it never reached the point of universal adoption.

Nothing was ever settled on this subject until after the year 1857. In that year an attempt was made to amend the constitution by allowing the state to issue bonds in the sum of \$5,000,000 to aid in the construction of the railroads which the United States had subsidized with land grants, and the campaign which involved this amendment was most bitterly fought. The opponents of the measure published a cartoon of a gopher to bring the subject into ridicule, which was very generally circulated throughout the state, but which failed to check the enthusiasm in favor of the proposition.

The cartoon Flandrau speaks of is no doubt the first artistic attempt to tag Minnesotans as "gophers". It shows a group of humanized gophers, wearing tall hats, hitched up to a train-load of prosperous-looking gentlemen, presumably railroad promoters. The entire procession rests on the backs of haggard citizens with moneybag millstones hanging from their necks. The head gopher is saying, "Bring on the drafts, gentlemen, I will endorse them."

"This cartoon," continues Flandrau, "coming just at the time the name of the state was under consideration, fastened upon it the nickname of Gopher, which it has ever since retained."

In the early thirties, the Minnesota football teams, under the coaching of Bernie Bierman, were establishing themselves as national champions. During the championships, the local press described the Gopher teams as the "golden-shirted horde" and the "golden swarm". These descriptions were simultaneous with the team's change to yellow or "golden-colored" jerseys, bringing about the name, The Golden Gophers. The term Golden Gophers has been used for championship teams since the time of Bierman's valiant fighters and All-American tackles.

SCHOOLS AND COLLEGES



Schools and Colleges

The educational program of the University of Minnesota is characterized by a broad program of formal studies and extra-curricular activities covering many fields of knowledge. It is dedicated to the development of the whole student to the extent of his or her capabilities. As an institution, the University is organized for teaching and research in the highest branches of learning and empowered to confer degrees in special departments.

The structure of Minnesota is that of a "multiversity" — including colleges of general instruction, institutes and schools for special training or professional instruction. Within these colleges, institutes, and schools are departments and divisions devoted to such fields as physical education, medical technology, dental hygiene, and mortuary science.

Detailed information about the schools and colleges may be obtained at the College Offices, in the college bulletins, in the General Information Bulletin, and from faculty advisors, and counselors.

General Education

Students at the University of Minnesota are encouraged to maintain a program of general studies along with their various vocational and professional training. General education prepares the student for taking an active part in society. The many facets of education at the University of Minnesota, formal and extra-curricular, are dedicated to the development of the whole student.

Students are encouraged to discuss with advisors and counselors the program of study and the courses which best contribute to a general education. Each student's needs will be different from the needs of others, and determining a study program to meet those needs is a matter of individual planning.

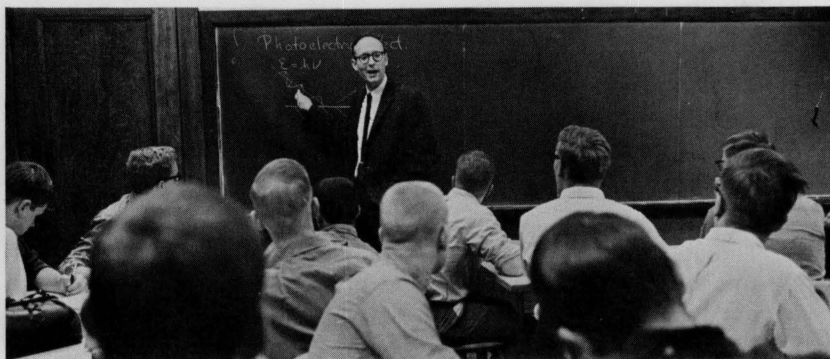
The various kinds of occupational training do not all take the same amount of time. Some study programs extend beyond the regular four years usually thought of as comprising a college education. The University also offers students several two-year study programs for training as library technicians, practical nurses, morticians, technical aids, or retail salesmen.



Some students will find all the facilities they need for sound vocational training in one college, school, or department. Nurses, for example, get most of their professional training in the School of Nursing, lawyers in Law School, and dentists in the School of Dentistry.

Other students, in preparing for a career, will cross college lines and take professional courses in two or more colleges or schools. A student who is preparing to teach high school English or mathematics will take courses in the College of Education and in the College of Liberal Arts. A student who plans a career as an agricultural journalist will take courses in the School of Journalism and in the College of Agriculture, Forestry, and Home Economics in the Institute of Agriculture. Engineering students may enroll in a program that combines Institute of Technology courses and School of Business Administration courses.

Careful study of college bulletins and consultation with an advisor will help a student in deciding which colleges and schools can contribute to his professional training. The opportunities for career preparation at Minnesota are as great as a well-equipped and well-staffed University can make them.



Credits for Course Work

A credit refers to a unit of academic work counting toward graduation. In contrast to high school, where one credit is commonly given for an entire year's study of a project, the University grants credits on a quarterly basis. A University credit usually means the student earning it has attended one lecture period each week throughout a quarter or has attended two hours of a laboratory class each week of a quarter. Thus, members of a class that meets three times a week for a lecture are taking a three-credit course.

A student who, in a given quarter, takes courses that will earn him a total of 14 credits is said to be "carrying 14 credits". The number of credits a student registers for in any quarter will depend upon many factors, among them the amount of time he can spend on studies and his facility in a given field. The typical student earns 15 or 16 credits each quarter. Before completing his registration, every student should discuss the matter of credits with an advisor or counselor.

Grades

In declaring the work of an academic performance, the University has a system of evaluating a student's work so that it may be compared with that of other students. Grades are in the A-B-C-D-F system with each letter carrying the number of points, per credit, as follows:

GRADES	POINTS PER CREDIT
A (Excellent)	4
B (Good)	3
C (Fair)	2
D (Poor)	1
F (Failure)	0

Other letter grades such as I, S, V, W, and X are assigned under certain irregular conditions. Their meanings are explained on the grade slips received by students at the close of each quarter.

Another part of the University's system for evaluating a student's classwork is the use of grade points and the grade point average (GPA). Both grade points and the GPA are computed on the basis of credits and grades. A student's grade point average is determined by dividing his total grade points by the total number of credits for which he has registered. Thus, a student with all A's has a GPA of 4.0. Marks of F earn no grade points, but credits for the courses in which they are received must be included when computing the GPA.

For example:

COURSE	CREDITS	GRADE	GRADE POINTS
Math 1	4	A	16
English A	5	B	15
Chemistry	4	C	8
Humanities	3	F	0
Phys. Ed.	1	C	2
	<u>17 credits</u>		<u>41</u>
			8 GPA = $\frac{41}{17}$
			<u>41 = 2.41</u>

In this case the student would have slightly better than a "C" average. Ultimately a GPA of 2.0 or higher is required for continued registration at the University.

Tests and Examinations

Instructors at the University use different kinds of tests to measure the progress students make in school and to assign grades describing the quality of work. The frequency of tests varies from course to course and from instructor to instructor. Students in a lecture session, for example, may be tested each week, while students taking a seminar course and doing a research project may not take any tests throughout a quarter. New students generally will find tests in college classes to be less frequent than in high school classes. In most courses, there is a one-hour mid-quarter examination and a two-hour final examination.

A student's final grade usually depends upon more than test results. Teachers also will take into account written assignments, attendance, class participation, and other factors in assigning grades. Since tests are an important measure of academic achievement, however, the three kinds of tests most common at the University are described here.

Objective tests may take the form of true-false statements, items to be matched, multiple choice questions in which students check the right answer, or a combination of these. Use of this kind of test enables the teacher to learn a great deal about a student's knowledge in the short time allowed for testing.

Subjective tests are those in which students write in their own words the answers to questions or discussion topics. They must organize information and relate it to a problem. Questions or topics to be discussed may be distributed in advance or dictated to the class at the start of the examination period. This kind of test, too, may take a variety of forms.

Performance tests are those in which students carry out applications of the material they have learned. This kind of test is used most frequently in classes with laboratory work. To test his students, a teacher might, for example, have each conduct an experiment.

Other types of tests are given at the University prior to registration in a specific course. Placement tests are used to discover a student's background and ability for certain coursework so that he may be placed in a section with other students of the same relative standing. Proficiency tests such as those given for entrance into certain language courses cover the same work as final course examinations. If a student receives an acceptable grade (acceptable being determined by the department) he may be given credit for the course covered by the test.



Classroom Attendance

During the early meetings of a new class, students sometimes are concerned about their instructor's attitude toward absence. Sometimes a teacher will announce early in the quarter what his policy is on unexcused absence and will expect students to adhere to that policy. Whether or not an instructor mentions it, students are expected to meet the obligation of classroom attendance.

Excuses for Absence — If a student is unable to attend class because of illness or some other acceptable reason, he should give the reason to his instructor. When a physician at the Health Service advises a student not to attend classes he will give the student a statement to present to teachers upon request. Students usually are able to get help in making up classwork that was missed for good reasons.

Course Changes

If a student feels a necessity to make a change in his course schedule, he should notify his advisor and college office. The advisor or a college official can help to add, drop, or substitute appropriate courses to fill an individual program. Changes should be made before classes start or during the first few days of the quarter.

Course Entry Cards

When you register for a course you will receive an IBM class reservation-entry card. You must take this card to the first meeting of your class and complete it and hand it in as your instructor directs. If you lose a card, you can replace it by applying to the Class Reservations Office (Tally Office) from which the class card was issued.

Transfer of Colleges

If you feel the need to change your college within the University, you should discuss the proposed transfer with your advisor and an advisor of the college to which you wish to transfer. The necessary transfer can then be effected through the College Offices concerned.



The Honors Program

The main objective of the honors program is the enrichment of the opportunities that are made available to the qualified student. Recognition of achievement is important but secondary. The program is designed to attract and challenge students of high ability and motivation. An attempt is made to identify these students as early as possible, and they are urged to participate in honors activities as soon as they have been identified.

A special honors program is affiliated with the College of Liberal Arts. However, each college in the University has its own form of honors program and work for superior students.

The formal honors program is open officially to only juniors and seniors. However, many of the lower division courses at the University include special honors sections for which any qualified student may apply. The other advantages of the overall program include Freshman Honors Seminars conducted weekly by College Deans, weekend Honors Retreats, All College Honors Seminars (open to upper division students only), and specialized departmental programs including small tutorial session, independent study and research programs, and a general widening of the opportunity boundaries for students.

The honors degrees granted at the University of Minnesota are for departmental honors work. They include cum laude, magna cum laude, and summa cum laude.

If you are registered in the College of Liberal Arts and wish to inquire further into the honors program, contact the Honors Division Office, 115 Johnston Hall. If you are not registered in CLA, you are encouraged to consult your own college office concerning opportunities for honors or special work.

Tuition and Fees

A prospective college student always must ask, "How much will it cost?" Whether he is "on his own," earning all of the funds he needs, or getting aid from parents or others, he asks the inevitable question of University advisors.

A general answer is, for residents of Minnesota, about \$1,250 for three quarters except for dentistry, medicine, and veterinary medicine where expenses are about \$1,900. Nonresidents should add up to \$903 more for the higher tuition required of students from out of state. Tuition for resident students in most colleges is \$125.00.

This general answer has to be qualified at once, for there are many factors that cannot be tied down to specific figures. Of the expenses the largest item is that for board and room. In some cases these board and room estimates will be too high — many students, living at home or with relatives, make no cash outlay for board and room; others "work out" board and room costs. Depending on special situations, the cost may be higher. Moreover, an estimate such as this does not take into account laundry and clothing expenses, nor any cost for such items as recreation, travel, and other incidentals.

Incidental Fee

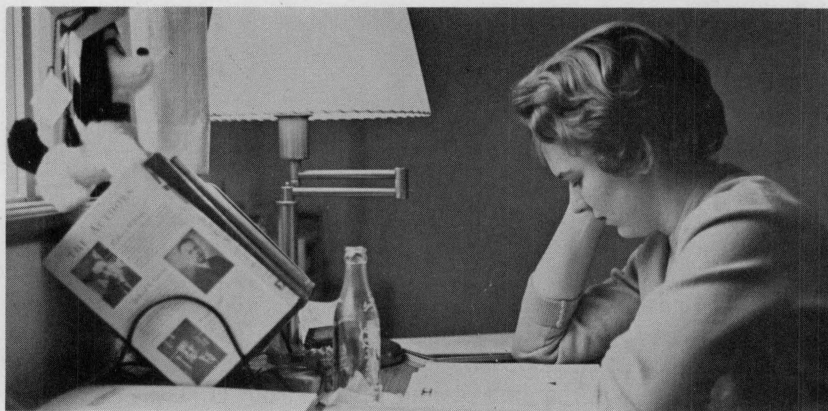
If you are registered for 6 or more credits in a quarter you pay the \$27.00 incidental fee which entitles you to the privilege of the Student Unions, the University Health Service, the MINNESOTA DAILY, and helps to support the student government. Students in the Institute of Technology pay 85 cents more a quarter and receive in addition the MINNESOTA TECHNOLOG.

Bulletins

There are a number of bulletins published at the University to provide information useful to students and staff members. Most of them can be obtained on the main floor of Morrill Hall at the Information Booth or by writing the Office of Admissions and Records, University of Minnesota, Minneapolis, Minnesota 55455.

General Information Bulletin

This bulletin gives a brief overview of the University as a whole. It contains information about entering the University, brief descriptions of each college, a list of the services available to students, information on expenses, a calendar of the year's events, and maps of the Minneapolis and St. Paul campuses.



College Bulletins

Each college or school of the University publishes a bulletin with detailed information on its purpose, facilities, admission requirements, registration procedures, degree requirements, course descriptions, and student services. These bulletins may be obtained at the college or school offices listed under the Directory of University Services in this handbook, or on the main floor of Morrill Hall at the Information Booth.

Class Schedules

The class schedule bulletins are published before registration begins for each quarter. These bulletins list the classes to be offered in a quarter, or summer session, name the instructors, and give the times and places of meeting for each class. Also included are registration instructions, a calendar of holidays and important University activities, and a final examination schedule for the quarter. The class schedule bulletins are obtained at college offices.



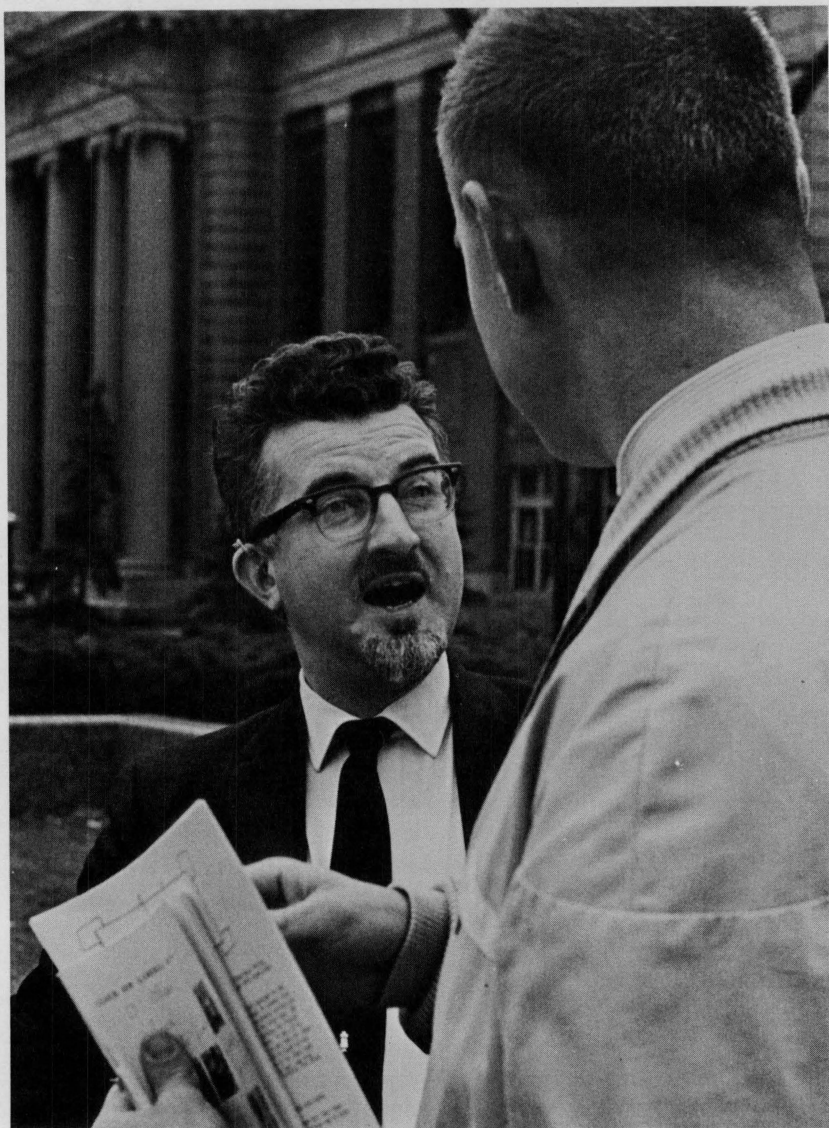
ROTC Bulletin

The ROTC Bulletin gives information on Army, Navy and Air Force courses taught at the University and on procedures for registering in the ROTC program. It may also be obtained at the Armory or through the Office of Admissions.

Student Directory

The Student Directory gives the school, address, telephone number, and home town of each student enrolled at the University of Minnesota, as well as a directory of instructors, staff, and University employees. It also includes a calendar of the year's events and other miscellaneous information. The book is published each fall quarter and its cost is included in the "incidental fee" paid during registration.

College Offices



COLLEGE OF AGRICULTURE, FORESTRY, AND HOME ECONOMICS. In this college on the St. Paul Campus, students work with a faculty advisor while planning study programs and registering. Additional help on programs, registration, and orientation are provided by the College Office, 215 Coffey Hall, St. Paul Campus, 647-3220.

COLLEGE OF EDUCATION STUDENT PERSONNEL OFFICE — 206 Burton Hall, 373-2257. The staff of the Student Personnel Office provides information and counseling for any student who is interested in teaching or other related fields of education as a career.



GENERAL COLLEGE COUNSELING OFFICE — 106 Nicholson Hall, 373-4104. A professional counseling staff assists students with study skills, educational-vocational planning, and personal adjustment. Faculty advisors are available for help in program planning and academic questions and problems.

INSTITUTE OF TECHNOLOGY COUNSELING SERVICE — 133 main Engineering, 373-3227 or 373-3228. Although the Assistant Dean's Office has general responsibility for the counseling function in the Institute of Technology, each student is assigned an individual advisor for the full school year. Since all advisors are members of the faculty, they are directly aware of the students' problems and are able to be of assistance in solving them.

COLLEGE OF LIBERAL ARTS LOWER DIVISION OFFICES in 201 (373-2912), 214 (373-2876), and 220 (373-2880), Johnston Hall and 16 Walter Library (373-5086), house the faculty advisors for most freshmen and serve as "the dean's office" for freshmen and sophomores. Students are welcome and encouraged to bring their problems with program planning, scholastic difficulty, and the like to their advisors for help. Each student is assigned to one of the four Lower Division Offices for his first two years in the college.

COLLEGE OF LIBERAL ARTS UPPER DIVISION OFFICES. The three offices (Humanities in 206 Folwell Hall 373-5245, Social Sciences in 208 Social Sciences Building 373-4237, and Sciences, Mathematics, and Central in 225 Johnston Hall) serve juniors and seniors as "the dean's office." It also houses the college counselors who complement faculty advisors and assist with educational-vocational plans and other problems. A Placement Office (125 Johnston Hall 373-2818), which helps graduates find employment, is also part of the Upper Division.

ORIENTATION





The orientation programs are designed to acquaint students with the nature of the University of Minnesota and provide a first college experience. Programs are planned by student and staff committees dedicated to the preparation of new students for entrance to the college community, the introduction of academic, cultural, and social opportunities at this University, and the provision of opportunities for experiences on a college level which develop intellectual habits, personal principles, and abilities to function in the college community.

The Moccasin, Handbook for New Students

This handbook is a source of information about the University. It answers many questions for the student new to Minnesota and it serves as a handy reference booklet throughout college. A perusal of the Moccasin may stimulate questions that can be answered during various Orientation activities. Lists of services, activities as well as academic, social or religious opportunities are described in this publication which provides a brief introduction to the University community.

Two-Day Orientation-Registration

This program is designed to assist students in their first registration at the University. In this program the student is asked to participate in group and individual appointments in two days of pre-class activity.

Upon acceptance to a College of the University the new student will be sent an admission certificate which is entitled "Registration Permit." It is a yellow IBM card with holes punched for data processing. This permit is a ticket and acknowledgment to receive appointments and registration materials at the University. Along with this permit, the student may receive an English Classification Card which will provide information as to the level of placement in English and a Health Service Clearance Card. These cards, however, may be held until the student comes to register for classes or until he has completed further testing.



On the first day of Orientation-Registration, students are assigned to groups from the same college and will follow group appointments which include testing, a luncheon, information sessions on the Health Service, ROTC or Women's Programs, and extra-curricular activities. All students attend a college meeting where registration materials will be received and registration procedures will be explained. On the second day, students follow a series of individual appointments in which they will discuss their programs with an advisor, make out a schedule of classes, reserve courses, obtain a student identification card and have fees assessed. In addition arrangements can be made for housing, payment of fees, purchase of books and part-time employment.

Freshman Camp

In an informal setting at Freshman Camp, the new student is helped to acquire a broader understanding of the goals of education. Emphasis is placed on the individual responsibility and personal initiative necessary to acquire a college education both in and out of the classroom. At camp, small discussion groups are formed to give students an opportunity to learn about the relationship of personal values and human relations to behavior within the context of college training.

There's music . . . cheers . . . and all the good old songs of Minnesota which you will sing on other happy occasions. You will have the opportunity to meet outstanding professors and students informally. This event of Orientation will leave you with a warm and comfortable feeling — no longer a stranger, now you belong to the Gopher tradition.

Parents Day

A Parents Convocation at which the President of the University, the Dean of Students, and several student leaders speak; special interest groups are conducted; and, individual college meetings are held make up this special welcome program for parents. In this series of events, parents may discuss programs of the University, meet members of the University staff, and become acquainted with the college in which their son or daughter will study. Religious foundations near campus provide an open house and coffee hour following the convocation.



Welcome Week

In the week before classes begin in the Fall Quarter, a series of academic and extra-curricular programs are given to present the collegiate experience to students. Sample lectures are given by outstanding professors. The classroom preview series will permit students to become familiar with college-level lecturing and to gain helpful hints and techniques of study and note-making. The convocation on academic life offers a challenge to students in the field of learning since it will demonstrate how learning can be exciting and stimulating and, hopefully, instill in you a sense of mission in your quest for knowledge and understanding.

Each day Welcome Week Group forums and small discussion seminars will be conducted by upperclassmen. These discussion groups will reunite your Orientation-Registration groups and provide a starting point for planning Welcome Week activities. Your interest and participation in the group is an important key to a complete and successful preparation for the challenge of college.

Campus life will be introduced and put into perspective by student government leaders and organizations. The Parthenon Party, Coffman Capers, The Activities Mart, The Women's Tea are only a few of the programs presented to acquaint you with the recreational and social facilities of the University. Dances, barbecues, and faculty chats are some of the other highlights planned for your WELCOME to Gopher Heritage and the University of Minnesota.

President's Convocation

Highlighting your introduction to the University is the traditional Opening Convocation for all students which is held on Thursday of the first week of school. This program will be held in Northrop Auditorium and will be of interest to all students and staff of the University as well as members of the community. The President of the University keynotes the year and stresses the challenges and opportunities of the institution. The President, deans, faculty, and student leaders in academic vestments make this an impressive event.

STUDENT SERVICES



Financial Aids

STUDENT LOANS

Should you need financial aid or advice, the Bureau of Student Loans and Scholarships, 104 Westbrook Hall, may be able to help you. Loan funds have been established to help any student who is making normal progress toward an educational goal. To be eligible for loan assistance, you must have completed at least two quarters at the University with a satisfactory scholastic record. However, the two quarter residence requirements does not apply to the National Defense Education Loans; which are available to entering freshman who make application.

SCHOLARSHIP & MERIT AWARDS

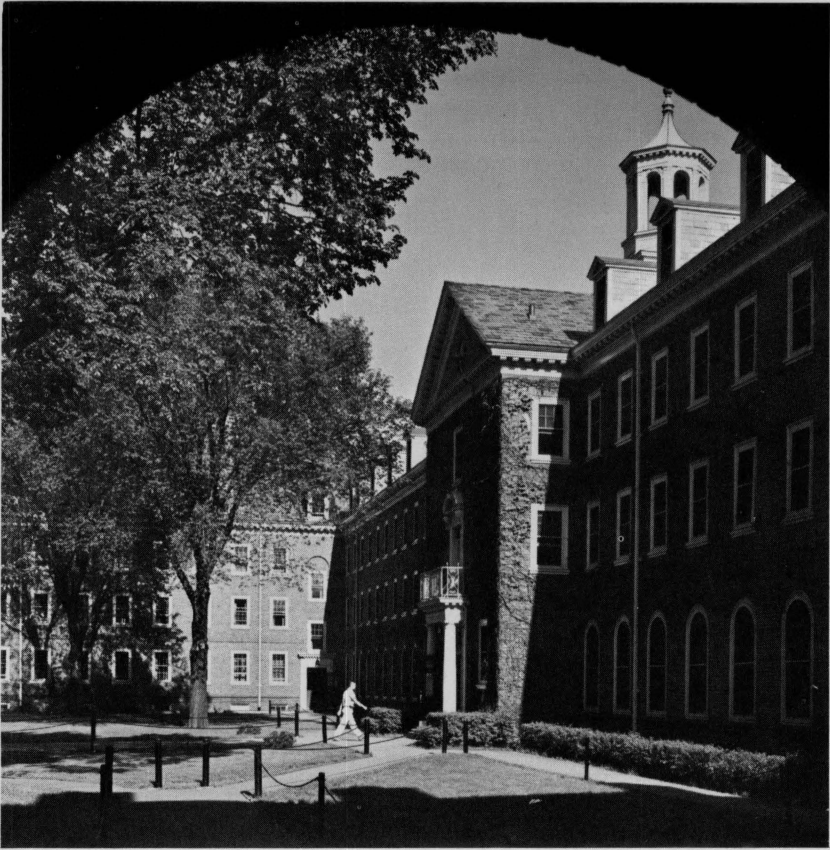
Scholarships for entering freshmen, chosen from among graduates of Minnesota high schools, are offered through the Bureau of Student Loans and Scholarships. This fund is supported by gifts from alumni and friends of the University and the University Bookstores. The scholarships, which range from \$100 to \$500, are awarded to applicants on the basis of scholarship, character, leadership, vocational and academic promise, and relative need.

When a student has established a record of achievement at the University, other scholarships and merit awards are offered in many of the University's fields of study, usually as cash grants in recognition of outstanding achievement. Scholarship applications can be made after a student has completed two quarters at the University. Students should note the Official Daily Bulletin the first two weeks of each quarter regarding meetings, which are held to instruct the student as to how to apply for the scholarships.

Housing Facilities

Congenial surroundings and the fellowship of others doing the same work as you have a place in your college education. Because your intellectual and social development require an atmosphere of living that is conducive to study, relaxation, and discussion with your fellow students, the University of Minnesota takes care that your place of residence will provide these opportunities. Rooms in residence halls are comfortably furnished and lounges are available, as well as facilities for personal laundry. A full-time director assisted by residence counselors lives in each of the halls. The residence halls are within the campus area and provide easy access to classes and activities.

Out of town students may live in residence halls, private housing, or in fraternities or sororities. Not all freshmen or new students can expect to live in a University residence hall since the number of student accommoda-



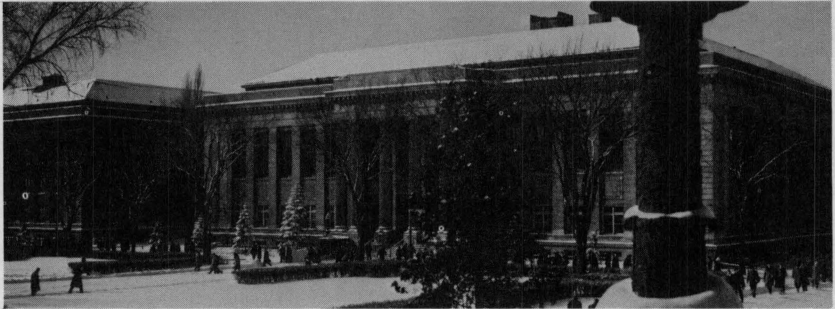
tions is limited. Private housing can be secured if University residence hall space is not available. Students should make arrangements for housing at an early date before classes begin to be assured of adequate quarters. In regard to private housing the regents have approved the following resolution: "The Regents of the University of Minnesota deplore discrimination on the basis of race, religion, or nationality. In line with this policy, they declare that housing facilities should be available to students regardless of race, religion, or nationality. This policy presently governs in all housing facilities offered to students by private owners."

For more information regarding housing, consult the General Information catalog or the Student Housing Bureau, 209 Eddy Hall, Minneapolis Campus, or 101 Coffey Hall, St. Paul Campus. For specific information about residence halls, consult the Office of the Director of Housing in 100 Westbrook Hall.

Library Services

Most of the publications which students need to consult in college, beyond the required texts used for individual courses, are available in the

University libraries. With over two million volumes, the University library ranks third in size among the ten largest university research libraries in the United States. In addition to the thousands of periodicals, newspapers, and reference books used for course-related study and research, the library resources also include extensive collections of literary, historical, and biographical works for recreational reading.



GENERAL LIBRARIES

Students in their first two years of college are provided with a separate Freshman-Sophomore Library in Johnston Hall. Here, under open shelf conditions are most of the books needed in connection with courses of the Lower Division level. The patrons of this library are also encouraged to use the Walter Library, especially when they need more specialized sources of information, such as periodical literature, for the preparation of term papers and reports.

On the St. Paul Campus there is a modern central library housing publications in agriculture and home economics, with outlying specialized collections in forestry, biochemistry, veterinary medicine, entomology, and plant pathology.

The library needs of students in several of the more specialized scientific and professional fields are met on the Minneapolis Campus through various department libraries housed outside of the Walter Library. Among these are such separate libraries as Engineering, Law, Chemistry, Art, Journalism, Geology, Music, Mines and Metallurgy, Pharmacy, the Bio-Medical Library, and the West Bank Library in the Classroom Building.

WALTER LIBRARY HOURS

Regular Schedule:

7:45 a.m. to 11:00 p.m. Monday through Friday

7:45 a.m. to 5:00 p.m. Saturdays

1:00 p.m. to 11:00 p.m. Sundays

Holidays on which the library is closed are New Year's Day, Easter, Memorial Day, Independence Day, Labor Day, Thanksgiving, and Christmas. Variations from the schedule will be announced in the Daily Bulletin. Between quarters the library will close at 5:00 p.m. Monday through Friday.

Health Service

OUTPATIENT OR DISPENSARY CARE

Regular Hours:

Fall, Winter and Spring Quarters
8:00 a.m. to 5:00 p.m. — Monday through Friday

Regular Hours:

Summer Sessions
8:00 a.m. to 4:30 p.m. — Monday through Friday
Closed on Saturdays, Sundays, and Holidays

Limited Service Hours:

Fall, Winter and Spring Quarters
(For Urgent Cases Only)
5:00 p.m. to 7:00 p.m. — Monday through Friday
8:00 a.m. to 6:00 p.m. — Saturdays
9:00 a.m. to 11:00 a.m. — Sundays and Holidays

When Health Service is Closed (For emergency cases only)

Go to the Emergency Room in the University Hospitals; enter Out-patient Department entrance just opposite the Health Service. After 9:00 p.m., use ambulance entrance in Mayo garage. Please note, this service is for **EMERGENCY CASES ONLY** when the Health Service is closed.

MEDICAL EMERGENCY TELEPHONE NUMBERS

During hours Health Service is open 373-3141
During hours Health Service is closed 339-7311

MINNEAPOLIS CAMPUS HEALTH SERVICE

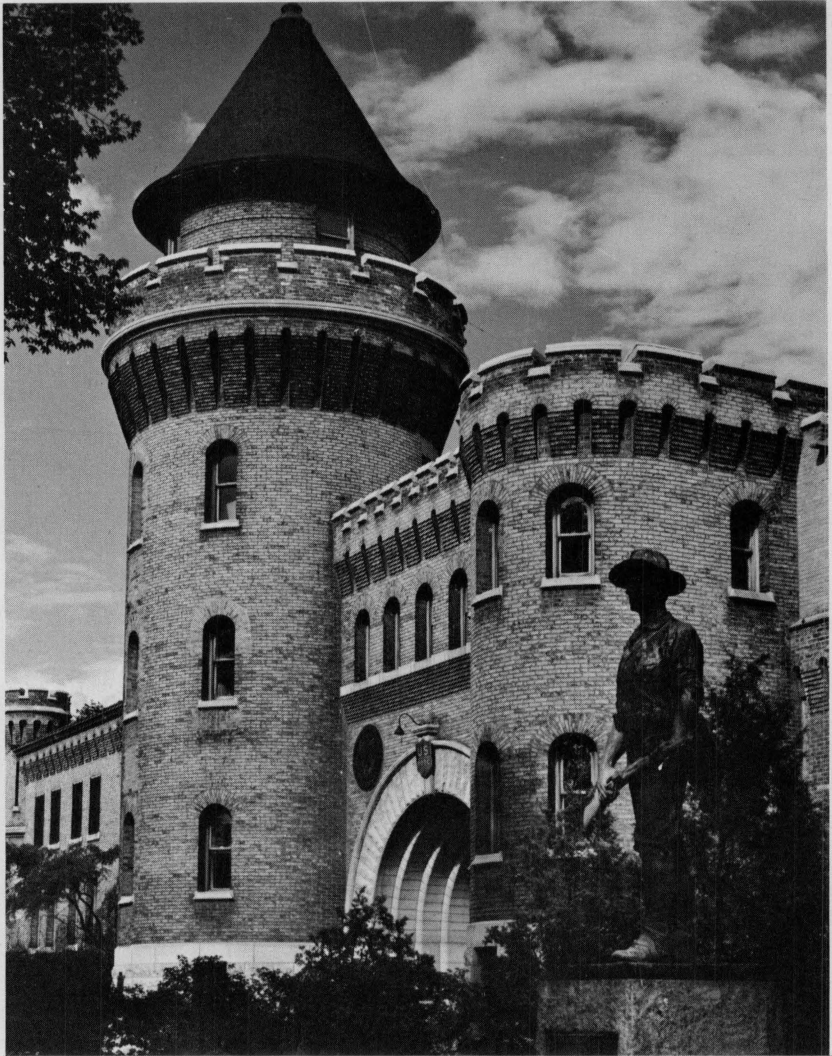
The Health Service building is located on Church Street, one and a half blocks south of Washington Avenue, and just around the corner and a half block southeast of Coffman Memorial Union. The students' infirmary occupies the fourth floor (Stations 48 and 49) of University Hospitals directly across the street from the Health Service.

ST. PAUL CAMPUS HEALTH SERVICE

The St. Paul Campus Health Service is on Cleveland Avenue between the gymnasium and Dexter Hall. (Telephone 647-3345)



Military Programs



The Reserve Officers' Training Corps program gives college male students an opportunity to qualify for commissions in one of these services — Army, Navy, Air Force, or Marine Corps. Student eligibility for the ROTC program includes registration in academic courses leading toward a degree, United States citizenship, plus physical and academic qualifications unique to a particular service. Competitive scholarships are available for outstanding high school students. Students interested in the special characteristics and course requirements of the services should consult the University Bulletin, "Army-Navy-Air Force ROTC."

Department of Student Unions



COFFMAN MEMORIAL UNION — 106 Coffman Union. Coffman Memorial Union is one of the centers of activity on the Minneapolis Campus. The Union provides numerous and excellent facilities for student activity and recreation plus many lounges in which the students may relax. The Union sponsors noon and evening programs which are always an attraction. Several cafeterias and lunch rooms housed in the Union serve the University in many ways from providing quick lunches to catering for banquets. In addition, there are several game rooms, a bowling alley, an arts and crafts shop, a barber shop, a fine arts lounge, and numerous study facilities.

WEST BANK LOUNGE — 130 Business Administration Tower. The students of the West Bank are offered many union services in the Union Lounge. The West Bank program sponsors many lectures and art exhibits as well as providing facilities for relaxation and reading. Future plans include separate student center building for the West Bank Campus area.

ST. PAUL CAMPUS STUDENT CENTER, Buford and Cleveland, St. Paul. The Center's program is meant to be friendly, functional, and flexible; the program includes dances, convocations, and art shows among its activities.

The Rouser Room of the Center is a favorite spot for students to meet and relax. Other facilities include a ballroom, bowling, billiards, and table tennis in the Gopher Hole.

The Office of the Dean of Students

STUDENT COUNSELING BUREAU, 101 Eddy Hall, 373-4193. Professionally trained counselors of this Bureau provide many services to students: vocational counseling for those who want help in making vocational plans or choosing a major field of study; counseling about personal problems; premarital and marriage counseling; counseling for students in academic difficulty who have the ability to succeed in college; counseling for physically handicapped students; help in improving reading and study skills. An occupational library contains information about occupations and vocational opportunities. Various psychological and educational tests and inventories are used when appropriate to help students in planning their course of action.

STUDENT ACTIVITIES BUREAU, 4 Temporary North of Mines, 373-3955. Many students will join one of the over 370 student organizations on campus. This bureau's purpose is to aid and advise students in planning their activities, handling group funds, and training officers. Individual students can gain information about student groups and assistance in joining an organization from this office.

BUREAU OF STUDENT LOANS AND SCHOLARSHIPS, 104 Westbrook Hall, 373-4141. Students with budget problems or trouble financing their education can receive advice and help from this bureau. Through the bureau students may get help in planning their budgets; they may obtain a short or long term loan, or they may learn of available scholarships.

STUDENT HOUSING BUREAU, 209 Eddy Hall, Minneapolis Campus, 373-4184, and 101 Coffey Hall, St. Paul Campus, 647-3258. This bureau aids students in making proper living and dining arrangements off campus. It also provides information on the rates and availability of rental units as well as counseling services for students seeking resolution of housing related problems.

OFFICE OF THE ADVISER TO FOREIGN STUDENTS, 717 East River Road, 373-4094. Advice and personal counseling is provided for students from over 80 foreign countries regarding their total stay in the U.S. on matters of immigration status, and social, academic, personal, and financial problems. All foreign students should come to this office upon arrival. Information about planned campus and community activities which enable persons of different cultural backgrounds to share ideas is available for all interested University students.

THE WOMEN'S CONTINUING EDUCATION PROGRAM, 219 Temporary North of Mines, 373-3850. This program is an advisory and coordinating service which is concerned with the broad range of educational problems of women. Special counselors are available to discuss academic, career, or personal problems of women students, and to help them plan realistically for the future. A 2-credit seminar, "The Educated Woman in the United States," is offered on the study women's roles. All women students are eligible to use the services.

SPEECH AND HEARING CLINIC, 215 Shevlin Hall, 373-4116. Speech and hearing problems can be educational and vocational liabilities.

ties. Consultation, diagnosis, and therapy are available to students through the University Speech and Hearing Clinic. Appointments can be made by a visit to the clinic or by telephone.

COORDINATOR OF STUDENTS' RELIGIOUS ACTIVITIES, 211 Eddy Hall, 373-4076. This office serves as a clearing house between the University and the twenty-nine religious groups on Minneapolis and St. Paul Campuses. Information on Twin Cities churches and student denominational groups is available for those who wish to contact members of their own faith. Inter-religious projects and dialogue are encouraged; and inter-religious reading room is maintained for those concerned with better inter-group relations.

RESIDENCE COUNSELING PROGRAM, 8 Temporary North of Mines, 373-4128. All residence halls, sororities, academic and professional fraternities, and a few rooming houses have residence counselors or house directors who are certified, trained, and given over-all supervision by this office. The Residence Counseling Program is designed to help each student's residential experience contribute to his University education.

DISCIPLINARY COUNSELING OFFICE, 302 Eddy Hall, 373-4066. Non-academic student discipline has been designated by Regent action a matter of All-University concern and has been placed under the authority and jurisdiction of the Office of the Dean of Students and the All-University Committee on Student Behavior, an administrative body appointed by and responsible to the President. By Senate action, intercollege incidents of scholastic dishonesty (involving a student registered in one college taking a course in another college) have also been placed under the same jurisdiction. Incidents of scholastic dishonesty involving a single college are handled by the appropriate college officials and college scholastic standing committees. Certain types of student misconduct in the residence halls and in student organizations are adjudicated by supervised judiciary boards. The Disciplinary Counseling Office in the Office of the Dean of Students serves as the administrative secretary for the All-University Committee on Student Behavior and the All-University Judiciary Council. The latter council is the all-university tribunal which has jurisdiction in matters relating to conflicts among student organizations and violations of University policies pertaining to student organizations.

ORIENTATION OFFICE, 19 Temporary North of Mines, 373-4404. Aid in getting started, helping you to help yourself, providing the collegiate experience . . . this is the scope of orientation. This program is planned and presented by students and staff of the University with special credit due the Orientation Commission of the Minnesota Student Association which aids in planning, review, and support of the programs.

ST. PAUL CAMPUS DEAN OF STUDENTS OFFICE, 101 Coffey Hall, 647-3258. Students on the St. Paul Campus have directly available to them the services of the Student Counseling Bureau, The Student Housing Bureau, and the Student Activities Bureau, Foreign Student Advisors Office, Coordinator of Student Religious Activities, and the Speech and Hearing Clinic. The Student Activities Bureau is located in 103 Botany, 647-3781.

Other Student Services

STUDENT EMPLOYMENT OFFICE, 30 Wulling Hall, 373-3674. If you need a job to help meet school expenses, the staff of the Student Employment Office will help you find part-time work either on or off campus. Apply in person at the Office after you have enrolled and know your class schedule. Your chances of being placed depend on the supply of jobs, your qualifications, your need, and the hours you have available. Very frequently a job will provide valuable experience as well as financial assistance.

BURSAR'S OFFICE, 115 Morrill Hall, 373-2103. This office collects money from students for such items as tuition, course fees, dorm fees, inter-campus bus, lockers, parking, student loans, and others. The Office also executes student loan promissory note contracts.

THE MINNESOTA ALUMNI ASSOCIATION, 205 Coffman Union 373-2466. The Minnesota Alumni Association is a voluntary organization of graduates and former students of the University. Its only purpose is to support and assist the University in every possible way. Through its organization into constituent college groups, the Association features a combined membership in the college alumni group and the overall Association itself. Upon graduation, it is your official contact with the University, and the only record-keeper of alumni addresses and information. The Association originated and continues to sponsor a number of freshman scholarships. Membership entitles the alum to receive ten issues a year of the *Alumni News* magazine, and makes him eligible for the Association's group life insurance program and membership in the University of Minnesota Alumni Club.

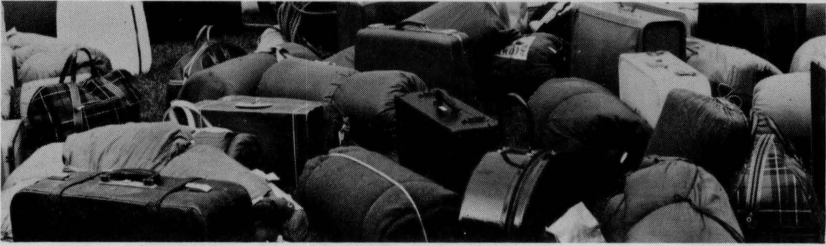
LEGAL AID CLINIC, 133 Fraser Hall, 373-2735. This clinic is organized to help students at the University who cannot otherwise afford to retain the services of private counsel. The clinic is staffed by advanced students in the Law School under the supervision and direction of practicing lawyers in cooperation with the Minnesota State Bar Association.

Even though its jurisdiction is limited, the Clinic is equipped to handle most student legal problems.

PLACEMENT OFFICE, 102 Burton Hall, 373-2250. The University of Minnesota has what is known as decentralized placement services. By this we mean that each of the University's colleges, divisions, or departments has the responsibility for providing placement services for its students.

Some of these, such as the School of Business Administration, the College of Education, College of Liberal Arts, College of Agriculture, Forestry, and Home Economics, and the Institute of Technology, maintain full time placement offices and staff. The others have delegated placement responsibility to staff members in addition to their regular responsibilities. In addition, informal placement functions are carried out by many other staff personnel.

The Placement Inquiries Clearance Office is charged with the responsibility of coordinating the activities of these decentralized offices. Inquiries or requests for personnel are referred by the Placement Inquiries Clearance Office to the colleges or departments of the University which



can best supply applicants for the position. This office helps coordinate the work of the various divisions when employers seek candidates from more than one college or department. The Placement Inquiries Clearance Office also assists employers in locating candidates for positions peculiar to particular organizations.

In this way the Placement Inquiries Clearance Office insures that all likely candidates in the entire University are informed of existing opportunities.

VETERANS AND RECORDER'S OFFICE, 105 Morrill Hall, 373-2136. This office assists students with all questions relating to Veterans Administration Training Laws.

Public Law 894 and 634 — If you are a veteran registering under Public Law 894, you should make 105 Morrill Hall your first contact with the University. This office provides assistance to disabled veterans of the Korean Conflict with matters pertaining to registration and the interpretation of Veterans Administration regulations affecting University programs. It provides counseling and authorizes textbook and supply orders for such veterans.

If you are the son or daughter of a person who died of injury or disease incurred or aggravated in line of duty in the Armed Forces during World War I, II, or the Korean Conflict, you may be eligible for educational benefits under Public Law 634, the War Orphan's Educational Assistance Act of 1956.

For the Cold War G.I. Bill Public Law 89-358 and for Public Laws 894 and 634, you can obtain application blanks and additional information at the Veterans Administration, Fort Snelling, or 105 Morrill Hall, Minneapolis Campus.

SELECTIVE SERVICE OFFICES. The Selective Service laws require all male U.S. citizens, all aliens admitted as permanent residents, and most other male aliens who remain in the United States longer than one year to register with a Selective Service Board on or within five days after the eighteenth birthday, or within six months after entry into this country.

The law requires that you, as a student, notify your Board in writing of your student status. This should be done by submitting a Form 109, which may be obtained in 105 Morrill Hall, Minneapolis Campus or in 220 Coffey Hall, St. Paul Campus.

This form must be submitted each year in October. Failure to submit the proper form in October of each year will result in cancellation of deferment. At the present time no one can expect to complete four years of college without getting a deferment; thus, if you do not have a deferment, you may expect to receive notice to report for your physical shortly after you nineteenth birthday.



A directory follows which is intended as an aid to your acquaintances with the University. Personnel Services are listed according to the areas of service in which they function.

ACADEMIC COUNSELING

College of Agriculture, Forestry, and Home Economics	215 Coffey Hall
School of Forestry	110 Green Hall
School of Home Economics	200 McNeal Hall
College of Biological Sciences	116 Snyder Hall
School of Business Administration 225 Business Administration Tower	
College of Education	206 Burton Hall
General College	106 Nicholson Hall
School of Dentistry	136 Owre Hall
Dental Assisting	360B Millard Hall
Graduate School	321 Johnston Hall
Institute of Technology	133 Main Engineering
School of Architecture	110 Architecture
School of Chemistry	139 Chemistry
School of Mineral and Metallurgical Engineering 112 Mines and Metallurgy	
School of Physics	148 Physics

College of Law	125 Fraser Hall
College of Liberal Arts	215 Johnston Hall
Lower Division	201, 214, 220 Johnston Hall and 16 Walter Library
Upper Division	225 Johnston Hall
School of Journalism	111 Murphy Hall
Library School	3 Walter Library
School of Social Work	909 Social Science Building
College of Medical Sciences	1360 Mayo
Medical Technology	C205 Mayo
School of Nursing	125 Owre Hall
School of Public Health	1325 Mayo
Mortuary Science	114 Vincent Hall
College of Pharmacy	115 Appleby Hall
University College	106 Nicholson Hall
College of Veterinary Medicine	256 Veterinary Science

ADMISSIONS AND TRANSFER QUESTIONS

Admissions Office (Minneapolis Campus)	Window C Morrill Hall
Admissions Office (St. Paul Campus)	220 Coffey Hall

BOOKS AND SUPPLIES

Agriculture Bookstore	100 Coffey Hall
Coffman Union Bookstore	14 Coffman Union
Law Bookstore	Basement, Fraser Hall
Medical Bookstore	A-290 Mayo
Nicholson Hall Bookstore	1-2 Nicholson Hall
Professional Schools Bookstore	Basement, Main Engineering
West Bank Bookstore	Ground Floor, Classroom Building

COUNSELING, TESTING, OCCUPATIONAL INFORMATION

Reading and Study Skills Clinic	101 Eddy Hall
Student Counseling Bureau	101 Eddy Hall
Student Counseling Bureau (St. Paul Campus)	101 Coffey Hall

EXTRA-CURRICULAR ACTIVITIES

Coffman Union Program Office	230 Coffman Union
Fraternity Advisor	121 Temporary North of Mines
Language and Cultural Groups	117 Temporary North of Mines
Political and Social Action Groups	112 Temporary North of Mines
Social Service, Recreation and Hobby	114 Temporary North of Mines
Sorority Advisor	118 Temporary North of Mines
Student Activities Bureau	4 Temporary North of Mines
Student Religious Activities	211 Eddy Hall

FEE PAYMENTS

Bursar's Office	First Floor, Morrill Hall
---------------------------	---------------------------

FINANCIAL AID

(Loans, Scholarships, Employment)

Bureau of Loans and Scholarships 104 Wesbrook Hall

Financial Advisor, Student Organizations

5 Temporary North of Mines

Student Employment Office 30 Wulling Hall

HEALTH FACILITIES

Health Service Main Floor (3), Health Service

Dental Clinic First Floor, Owre Hall

Eye Examination Department Second Floor, Health Service

Speech and Hearing Clinic 215 Shevlin Hall

Mental Hygiene Clinic Fourth Floor, Health Service

HOUSING HELP

Student Housing Bureau (off campus housing) 209 Eddy Hall

University Housing Office (on campus, i.e., residence halls)

100 Wesbrook Hall

Married Student Housing 1295 Gibbs Avenue, St. Paul

INFORMATION SERVICE

Information Booth First Floor, Morrill Hall

INSURANCE (Health Care)

Blue Cross-Blue Shield Insurance W235 Health Service

INTERNATIONAL STUDENTS

Foreign Student Advisor's Office 717 East River Road

International Group Programming . . 115 Temporary North of Mines

LEGAL ASSISTANCE

Legal Aid Clinic 133 Fraser Hall

LIBRARIES

See section on libraries

LOST AND FOUND

University Police 2030 University Avenue S.E.

ORIENTATION PROGRAMS

Orientation Office 19 Temporary North of Mines

MUSIC

Band Tryouts 14 Northrop

Choral Organization Tryouts 107 Scott Hall

Instrumental Lessons 107 Scott Hall

Piano and Organ Lessons 107 Scott Hall

Voice Lessons 107 Scott Hall

PARKING AREAS AND PERMITS

University Police 2030 University Avenue S.E.

PERSONAL COUNSELING

Dean of Students' Office 200 Eddy Hall
Disciplinary Counseling 302 Eddy Hall
Student Counseling Bureau 101 Eddy Hall

PLACEMENT SERVICES

The University offers its employment placement services on a decentralized basis. The undergraduate colleges and schools have full time placement directors or faculty members designated to assist students in matters pertaining to employment after graduation. Check with the college office for information regarding this special service.

RECREATIONAL SERVICES

Intramural Office 203 Cooke Hall

REGISTRATION AND STUDENT RECORDS

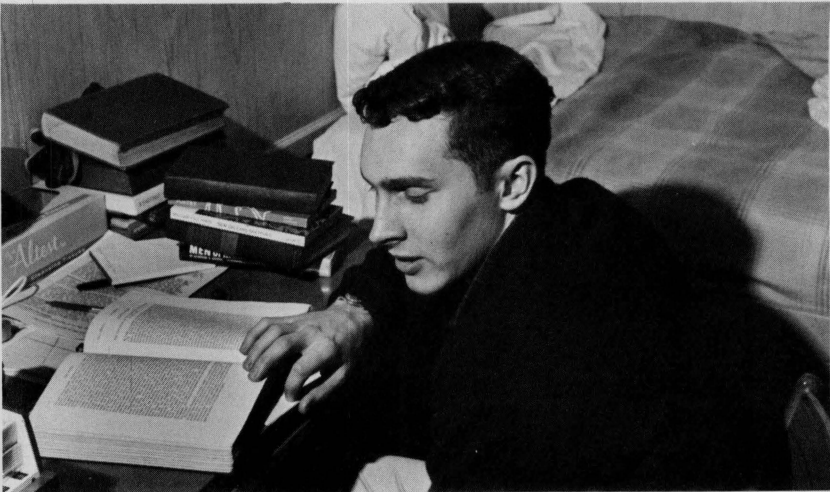
Records (Minneapolis Campus) 120 Morrill Hall
Records (St. Paul Campus) 220 Coffey Hall

ROTC PROGRAMS

Air Science 3 Armory
Military Science 108-A Armory
Naval Science 203-A Armory

VETERANS AND SELECTIVE SERVICE

Veterans and Selective Service 105 Morrill Hall





- COFFMAN MEMORIAL UNION BOOKSTORE** 373-2408
Location: 14 Ground floor, Coffman Memorial Union
Hours: 8:00 a.m.-5:00 p.m. weekdays
9:00 a.m.-1:00 p.m. Saturdays (regular school year)
- NICHOLSON HALL BOOKSTORE** 373-3688
Location: Ground floor, Nicholson Hall
Hours: 8:00 a.m.-5:00 p.m. Monday through Friday
9:00 a.m.-1:00 p.m. Saturdays (regular school year)
8:00 a.m.-8:30 p.m. Monday through Thursday during
the first two weeks of evening extension semester
- WEST BANK BOOKSTORE** 373-4450
Location: Ground Floor, Room 95, Classroom Building, West
Bank
Hours: 7:30 a.m.-8:30 p.m. Monday through Thursday.
7:30 a.m.-4:30 p.m. Friday
Not open Saturdays
7:30 a.m.-8:30 p.m. while extension classes are in session
7:30 a.m.-4:30 p.m. Summer Hours
- ENGINEERS BOOKSTORE** 373-3244
Location: 33 Main Engineering, Basement
Hours: 8:10 a.m.-5:00 p.m. weekdays
9:00 a.m.-1:00 p.m. Saturdays (regular school year)
6:00 p.m.-8:30 p.m. Monday through Thursday at the
beginning of extension classes
- MEDICAL BOOKSTORE** 373-2300
Location: 2nd floor, Mayo A-290
Hours: 8:00 a.m.-4:45 p.m. weekdays
Not open Saturdays
- AGRICULTURE BOOKSTORE** 647-3252
Location: Ground floor, Coffey Hall
Hours: 8:00 a.m.-5:00 p.m. weekdays
Not open Saturdays

Each bookstore has a list of the books needed for individual classes. The student should consult these lists when he has his schedule arranged for the quarter. If there is any question concerning the purchase of books, the student may ask a bookstore assistant.

Inter-Campus Bus Schedule

For the school year 1966-67, September 19 to June 10 inclusive, except during the Christmas and spring vacation periods.

There are two bus routes — one between the St. Paul and Minneapolis campuses with five-minute service starting at 7:00 a.m., Monday-Friday. The Saturday schedule may be found at each terminal. There is no service on Sundays and holidays. Free rides are given from one campus to another. The pay stops are at: the University Golf Course, Larpenteur and Fulham (April 1-November 1), Eustis and Larpenteur, and 28th and Como. Tickets for pay stops are sold at the Bursar's Office, Morrill Hall, on the Minneapolis campus, and the Cashier's Office, Coffey Hall, on the St. Paul campus.

The second bus route runs between the East and West Banks on a five-minute schedule starting at 7:45 a.m. Monday through Friday. The stops are at the Architecture Building, Temporary South of Folwell, Fraser Hall, West Bank Classroom Building, and Coffman Union.

Changes for vacation periods may be found in the Official Daily Bulletin.

City Bus Transportation

Students traveling by bus from the Minneapolis campus to other parts of the Twin Cities have the choice of three regular bus routes:

Line 6 travels between the Eustis and Como terminal and Xerxes-France on a 20 minute schedule.

Line 8 travels from 15th and 4th to Oak and Washington and then to downtown Minneapolis on a 40 minute schedule.

Line 16 travels from downtown Minneapolis through the campus and to downtown St. Paul via Washington on a 6 to 10 minute schedule.

University Food Services

COFFMAN CAFETERIA: (Ground Floor-east wing)

Breakfast	7:00 a.m. to 10:35 a.m. Monday through Friday
Lunch	11:10 a.m. to 1:30 p.m. Monday through Friday
Dinner	4:45 p.m. to 7:00 p.m. Monday through Friday
Saturday Breakfast	7:30 a.m. to 10:35 a.m.
Saturday Lunch	11:10 a.m. to 1:00 p.m.

COFFMAN FOUNTAIN GRILLE: (First Floor-east wing)

Service from 9:30 a.m. to 4:45 p.m. Monday through Friday

COFFMAN GOPHERETTE: (Ground Floor-east wing)

Service from 10:30 a.m. to 3:30 p.m. Monday through Friday

COFFMAN COMMUTERS LUNCH ROOMS: (Ground Floor)

*Ski-U-Mah Room (Across from Bookstore)

Continuous service from 10:30 a.m. to 2:00 p.m. Monday through Friday

Vending Service from 9:00 a.m. to 5:00 p.m. Monday through Friday

*North Star Room (Adjacent to Bookstore)

Vending Machine Service 6:00 a.m. to 10:00 p.m. every day

Milk Bar and Bag Lunch Service 11:00 a.m. to 12:30 p.m. Monday through Friday

*Gopher Hole (Basement-east wing)

Vending Machine Service 7:00 a.m. to 10:00 p.m. Monday through Friday

Bag lunches may be eaten in the lunchrooms indicated by (*)

COFFMAN PARTY AND BANQUET SERVICE

Regular party, banquet, and catering service is available throughout the quarter. Student organizations, departments, faculty, and employee groups are always welcome to make use of these facilities. Please make reservations at least two days in advance. Phone-373-2496.

SHEVLIN HALL CAFETERIA-LUNCH ROOM:

(Northwest corner of campus)

Continuous service 7:30 a.m. to 4:00 p.m. Monday through Friday

ST. PAUL DINING CENTER:

CAFETERIA:

Breakfast 7:00 a.m. to 8:00 a.m. Monday through Friday

Lunch 11:30 a.m. to 1:00 p.m. Monday through Friday

Dinner 5:00 p.m. to 6:00 p.m. Monday through Friday

STAFF DINING ROOM:

Lunch 11:30 a.m. to 1:00 p.m. Monday through Friday

ST. PAUL STUDENT CENTER-SNACK BAR

Continuous service 7:00 a.m. to 9:30 p.m. Monday through Friday

Continuous service 12:00 p.m. to 7:00 p.m. Sunday

Continuous service 7:30 a.m. to 8:00 p.m. Saturday



University Post Office

Location: Ground Floor, Coffman Memorial Union, 373-2432

Hours: 8:15 a.m.-4:45 p.m. weekdays — ALL YEAR

This Post Office is closed on Saturdays throughout the year.

The last mail collection is at 4:30 p.m. — ALL YEAR

Registers and money orders close at 4:15 p.m. — ALL YEAR

Radio Station KUOM

Eddy Hall
770 Kilocycles

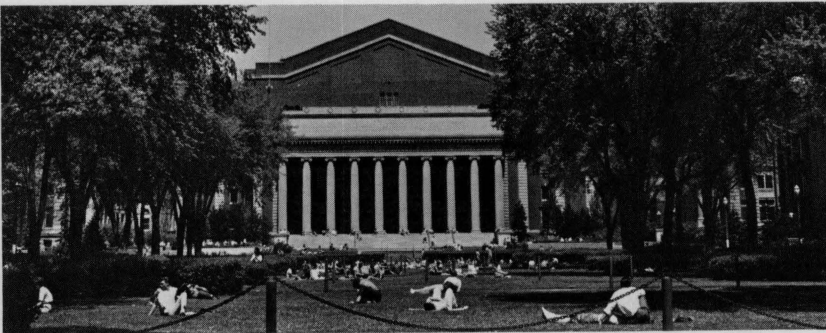
KUOM, a part of the General Extension Division, is the educational radio service of the University; and broadcasts informational, instructional, and cultural programs in the main not duplicated on commercial stations.

Hours — Monday through Saturday (except 12:30-2:30 Saturdays)

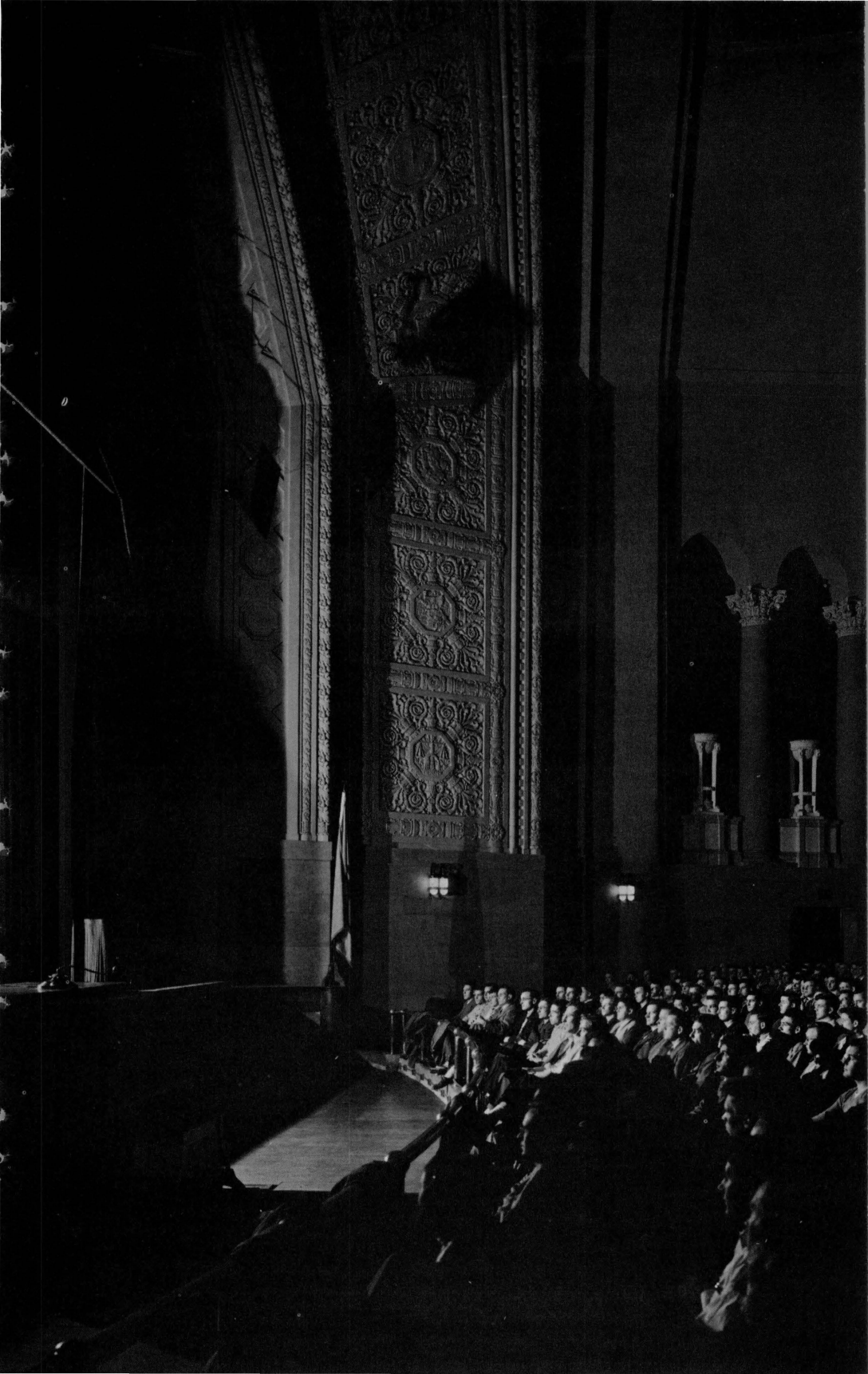
August	10:30 a.m.-8:15 p.m.	February	10:30 a.m.-5:45 p.m.
September	10:30 a.m.-6:30 p.m.	March	10:30 a.m.-6:15 p.m.
October	10:30 a.m.-5:30 p.m.	April	10:30 a.m.-7:00 p.m.
November	10:30 a.m.-4:45 p.m.	May	10:30 a.m.-7:30 p.m.
December	10:30 a.m.-4:30 p.m.	June	10:30 a.m.-9:00 p.m.
January	10:30 a.m.-5:00 p.m.	July	10:30 a.m.-9:00 p.m.

University Television

The Department of Radio and Television is administratively responsible for University of Minnesota television broadcasts over KTCA-TV, Channel 2, five days each week, Monday through Friday, from 9:00 to 10:00 p.m. In addition, the department is responsible for most closed-circuit television within the University. From 60 to 70 hours a week of closed-circuit television is now presented at the University in courses ranging from laboratory medicine and chemistry to French and accounting. Approximately ten per cent of the University's total enrollment now receives some instruction via closed-circuit television. Some of the advantages of televised instruction are greater flexibility in scheduling, improved visibility of demonstrations and visual aids, reduction of travel between Twin City campuses and making certain courses available to larger numbers of students than would otherwise be possible.



CULTURAL, RELIGIOUS, SOCIAL LIFE



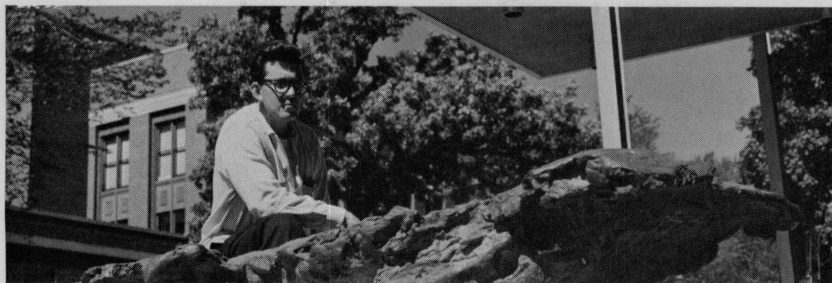
In its task of preparing individuals for creative lives in the world, the University of Minnesota seeks to provide an environment of cultural, religious, and social development for the student. All students have the opportunity to take part in a program of extra-curricular activities.

Some student activities provide training for future jobs. Employers often seek college graduates with experience in student organizations. The employers know that human relations and personal adjustment are important considerations in job applicants as well as professional knowledge and technical skill. Participation in activities makes the University a better place to live and may also furnish the fun and relaxation students need after hours of class and study.

Artist Series

The University Artists Course will offer two complete series and several special concerts during its 49th Season in 1967-68. Each series of concerts provides a unique cultural opportunity for all students. Season tickets represent a discount up to one half on each series and are available at the Ticket Office, 105 Northrop Auditorium until the date of the first concert of each series. Special concerts are announced throughout the year.





MASTERPIECE SERIES

- Theresa Stratas, soprano — October 3, 1967
Carmina Burana, Les Grand Ballets Canadiens — October 18, 1967
The Barber of Seville, Goldovsky Opera Company — November 7, 1967
Rudolf Serkin, pianist — November 28, 1967
Royal Philharmonic Orchestra — January 14, 1968
Martha Argerich, pianist — January 24, 1968
Marcel Marceau, mime — February 26, 1968
Stern-Istomin-Rose, chamber trio — April 30, 1968

CELEBRITY SERIES

- John Davidson — October 28, 1967
Manitas De Plata — November 15, 1967
The National Ballet of Canada — November 20, 1967
Rowan and Martin with the Mariachi Brass — March 2, 1968
The Festival Orchestra with the Pickwick Puppets — April 23, 1968
Mantovani (Optional Series Concert) — October 24, 1967

Art Exhibits

Art exhibits afford the opportunity to both students and staff to have contact with large numbers of original works of art from all periods and in all media. For the student who seeks a liberal education in the arts, the University Gallery, with its growing collections and changing exhibitions, provides a unique opportunity for him to supplement his experiences in the studio, lecture room, and library. For the student who seeks professional training in the arts, the Gallery provides research facilities and specialized exhibitions, as well as workshop training in museum principles and practices. During the academic year, the exhibition areas of the University Gallery are open from 8:30 until 4:30, Mondays through Fridays. The University Gallery also operates a program for the loan of original works of art to students and staff. For additional information please inquire at 316 Northrop or call 373-3424. Other outstanding exhibitions during the year are displayed in Jones Hall (Art Department), the Architecture Court, the St. Paul Student Center and the Union Fine Arts Gallery.

Music Tryouts

The Music Performance groups at Minnesota are open to Freshmen and new students in all colleges. Organizations include Opera Workshop, University Chorus, Chamber Singers, Women's and Men's Glee Clubs, St. Paul Campus Choir, University Concert Band, University Marching Band, University Symphony Band, and the University Orchestra.

Auditions for the bands are conducted early in June and September. Auditions for all other groups are conducted during Welcome Week. If you are considering an audition for one of the music organizations, you should leave time free for the activity in your schedule of classes.

For further information regarding Band auditions, contact the Band Office, 14 Northrop. For information regarding auditions for other music groups, contact the Music Office, 107 Scott Hall.



Convocations

A tradition of fine convocations for students dates from the very earliest days of the University. Convocations will be presented throughout the year at varied hours, days and in any one of several of the auditoria on the campus. Watch for the announcements of time, place and date. In addition to the regular convocations, which feature famous speakers and artists, there are several traditional meetings such as the Athletic "M" Convocation, the President's Convocation opening the school year, the Baccalaureate service and the Cap and Gown Day Convocation.

Throughout the year the Department of Concerts and Lectures also joins with several colleges and departments at the University in presenting lectures on special topics of unusual interest. Symposia, clinics, musical events and colloquia on many subjects are offered most years. Announcements of attractions and topics are made through the Daily and on campus bulletin boards throughout the year.

Foreign Language Plays and Movies

The language departments at the University, student film societies, and film sections of student organizations present foreign language plays and foreign movies throughout the year. If you are interested in trying out for a foreign language play, you are encouraged to inquire at the departmental office of the language which you speak for specific information. The MINNESOTA DAILY prints articles and announcements concerning foreign language film showings, and the campus bulletin boards advertise both plays and films.

Student Publications

Any student is eligible to work on the All-University publications. The MINNESOTA DAILY staff publishes the daily newspaper and the monthly IVORY TOWER magazine of the University. The MINNESOTA GOPHER staff compiles the yearbook of the University. The Board in Control of Student Publications supervises the editorial and financial management of these publications.

Special Dean's Retreat Program

The program consists of a series of weekend camp retreats to facilitate informal intellectual exchange between gifted freshmen and faculty known for their excellence. The retreats are sponsored and coordinated by the Office of the Dean of Students. Upperclass students (who attended during their freshmen year) assist in planning and administration. Reunion retreats are held periodically.

Eligibility for the program is based on high school rank, test scores, and grades earned during the freshman's first quarter at the University. The camp schedule of dates is mailed to qualified students early in January when they are invited to participate in the Special Dean's Retreat Program.

Special Weeks and Days

Each year the University and its many colleges conduct special weeks and days. These programs are concerned with a variety of student and faculty activities designed to broaden the scope of the University education. An example of the special weeks and days are Greek Week, sponsored by fraternities and sororities; International Emphasis Week, sponsored by the Minnesota Student Association; and United Nations Day, sponsored by the International Relations Club.

Religious and Inter-Faith Groups

Most student religious organizations are associated with denominational student centers or national boards of their respective church affiliations; others are associated with religious groups within the Twin Cities. These student centers provide worship services and also offer a wide variety of cultural, intellectual, and recreational activities. Many students make the religious groups a focal point of their campus life.

Individual counseling and assistance is available at most of the centers. Many of the groups conduct their main program during the week in lunch hour seminars. In addition, study programs, special classes, Bible study, service projects, and marriage discussions are among the types of programs offered. Cooperative projects, lectures, and symposia are offered to the entire University community.

ASSEMBLIES OF GOD

Chi Alpha
820 East 14th St., Mpls.

BAHA'I

211 Eddy Hall

BAPTIST

Baptist Student Fellowship
1219 University Ave. SE, Mpls.
Baptist Student Union
Burton Hall 129
No. American Twin City Student Committee
4350 Russell Avenue No.
Conservative Baptist Student Union
2302 Blaisdell Ave. So., Mpls.

BUDDHIST

Buddhist Student Association
211 Eddy Hall

CAMPUS CRUSADE FOR CHRIST

1120 5th St. SE, Mpls.

CATHOLIC

Newman Student Association
1701 University Avenue SE, Mpls.
Newman Club, St. Paul Campus
1505 N. Cleveland Ave., St. Paul

CHRISTIAN MEDICAL SOCIETY

Health Service, Mpls. Campus

CHRISTIAN SCIENCE

Christian Science Organization
395 Ford Hall, Mpls. Campus

CHURCH OF CHRIST

University Christian Foundation
1507 University Avenue SE, Mpls.

CONGREGATIONAL

See United Campus Christian Fellowship

COPTIC

Coptic Association
126 Diehl Hall

COVENANT

Covenant Club
43rd Ave. and 32nd St. So., Mpls.

DELTA KAPPA PHI

316 Walnut St. SE, Mpls.

EASTERN ORTHODOX

Eastern Orthodox Fellowship
660 Social Science Bldg., WB Campus

EPISCOPAL

Episcopal Student Association
317 17th Ave. SE, Mpls.

HINDU

Hindu Association
354 Ford Hall, Mpls. Campus

INTER-VARSITY

Minnesota Christian Fellowship
132 Mechanical Eng., Mpls. Campus
Inter-Varsity Christian Fellowship
PO 2525, St. Paul Campus

JEWISH

B'nai B'rith Hillel Foundation
1521 University Ave. SE, Mpls.

KAPPA KAPPA LAMBDA

1813 University Ave. SE, Mpls.

KAPPA PHI

1209 4th St. SE, Mpls.

LATTER DAY SAINTS

Mormon Fellowship
116 Nicholson Hall

LUTHERAN (Missouri Synod)

University Lutheran Chapel and Student Center
1101 University Ave. SE, Mpls.

LUTHERAN (National Council)

Lutheran Student Association, Mpls. Campus
1813 University Ave. SE, Mpls. Campus
Lutheran Student Ass'n, St. Paul Campus
1407 N. Cleveland Ave., St. Paul

LUTHERAN Collegians

916 31st Ave. No., Mpls.

MENNONITE

Mennonite Student Fellowship
2211 28th Ave. So., Mpls.

METHODIST

Wesley Foundation, Mpls. Campus
1209 4th St. S.E., Mpls.
Wesley Foundation, St. Paul Campus
1387 No. Cleveland Ave., St. Paul

MUSLIM

Muslim Student Association
211 Eddy Hall

PRESBYTERIAN

See United Campus Christian Fellowship

SEVENTH DAY ADVENTIST

Seventh Day Adventist Student Fellowship
211 Eddy Hall

SIKH STUDY CIRCLE

211 Eddy Hall

UNITARIAN-UNIVERSALIST

Student Religious Liberals
608 Washington Ave. SE, Mpls.

UNITED CAMPUS CHRISTIAN

FELLOWSHIP
331 17th Ave. SE, Mpls.

YOUNG MEN'S CHRISTIAN

ASSOCIATION
1425 University Ave. SE, Mpls.

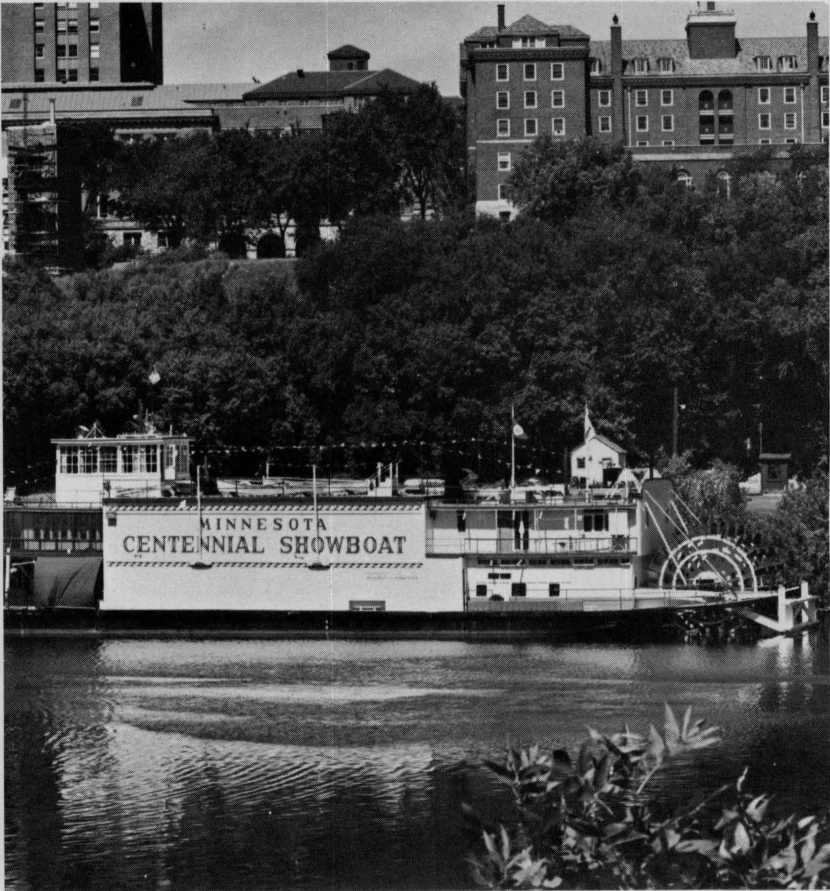
YOUNG WOMEN'S CHRISTIAN

ASSOCIATION
215 Coffman Memorial Union,
Mpls. Campus

University Showboat

The "General John Newton," one of the last of the old paddle-wheel steamers, was built in Dubuque, Iowa, in 1899. It spent the next 57 years of its life in the service of the Corps of Engineers, which used it as a packet boat, a mail boat, a freighter and even as a passenger boat. When put on the auction block, the Minnesota Centennial Committee procured the boat for the University of Minnesota with the understanding that the University would operate it as a summer Showboat for at least four years. The fact that the showboat is now in its tenth year of production attests to the popularity of the idea and to the quality of the University productions.

The Centennial Showboat this season will present Shakespeare's *Romeo and Juliet* and Brandon Thomas's *Charlie's Aunt*, under the direction of Dr. Frank M. Whiting, director of the University Theatre. The performances are scheduled for May 25–July 22, and August 21–September 2. Tryouts are open to all students.





Minneapolis Symphony Orchestra

For over sixty years the Minneapolis Symphony has perennially been accorded one of the top positions among America's finest orchestras. Offering strong evidence of the artistic stature to which the Orchestra has grown are its illustrious alumni of former conductors — Eugene Ormandy, the late Dimitri Mitropoulos, and Antal Dorati — who stand among the best-known practitioners of the conducting art. Following in their footsteps is the present music director of the Minneapolis Symphony, Stanislaw Skrowaczewski, former conductor of the National Philharmonic of Warsaw.

The Minneapolis Symphony Orchestra is the only major orchestra in America to have its home on a University Campus. The presence of the Orchestra on the campus has placed the University on a special plane so far as cultural opportunities are concerned. Each spring the Orchestral Association joins with the University in bringing the Metropolitan Opera Company of New York to the campus. Also, the Orchestra provides students and faculty members of the University with special season ticket rates. Some 300 additional students serve as ushers. This gives music students of the University opportunities for study not found on any other campus in the world.

The Minneapolis Symphony Orchestra performs in three series on campus; twenty symphony concerts on Friday evenings, between October and May; ten "Adventures in Music" concerts on Sunday afternoons between November and May; and "special" concerts throughout the season.

University Theatre

Each year the University Theatre presents a diversified program of living drama. The major drama season at Scott Hall consists of five full-length plays offering the finest in dramatic literature to the student body at a nominal fee. These plays are staff directed and tryouts are open to all registered students.

The University Theatre also sponsors a Classic Series, a Playwright's Premier Series and the Young People's University Theatre. The Classic Series and the Playwright's Series each present one play every quarter in the Shevlin Hall Arena Theatre. These plays are often graduate student directed. The Young People's University Theatre presents one play in the fall and one in the spring in the Scott Hall Auditorium. Students interested in the theatre find ample opportunity to participate both as technicians and actors.

STUDENT GOVERNMENT



The Minnesota Student Association

Every enrolled student at the University of Minnesota is a member of the Minnesota Student Association. The Association performs the function of all-University student government and coordinates a variety of University programs and activities for students. The MSA, based on student and faculty participation at every level of the University structure, has two main branches: the executive (student body president, executive committee, and cabinet), and the legislative branch or Assembly (principal study body of MSA composed of the representatives of campus organizations with forty or more members). The Senate, a smaller group of students, staff, and faculty representatives who handle the MSA's daily business, play an equally important role in the MSA structure. The MSA office is located at 213 Coffman Union.

The Union Board of Governors

The Board promotes and determines policies which will provide a comprehensive social, cultural, and recreational program for all University students. UBOG also establishes and enforces the rules for the operation and the government of the Union facilities. There are 13 student members including four selected at large from the student body in the Spring All-Campus Elections and nine appointed by a committee of the Board. For information about Union programs, inquire at 229 Coffman Union.

Social Service Council

This Council encourages and promotes social service projects such as Campus Chest, Campus Carnival, The Book Drive, and work projects in hospitals and various institutions. The Council membership is made up of five faculty members, twenty-five representatives from other campus governing groups, and eight members-at-large. Information about the Council and its programs may be obtained at 114 Temporary North of Mines.

Board of Residence Halls

Those students living on campus in University residence halls are represented by their respective hall presidents and five administrative members on the Board of Residence Halls. The purpose of the Board is to coordinate the activities and governments of the halls and communicate the opinions of the residents to the administration and other campus groups concerning residence hall policy.

Council of Student Religious Organizations

The Council of Student Religious Organizations promotes and coordinates many of the religious activities on campus. Concerned with stimulating religious consciousness and inter-denominational understanding, the Council serves all organizations concerned with student religious and inter-faith activities that are recognized by the University Senate Committee on Student Affairs. Indication of the desire for membership should be made at 211 Eddy Hall.



Board of Publications

The authority to establish policy for student publications which concern more than one college is vested in the Board of Control of Student Publications. The Board elects the editors and business managers, makes staff appointments, and determines fiscal and publication policy. Representation includes four faculty members and eleven student members elected for two-year terms — ten from the University-at-large and one from the Institute of Agriculture. Inquire at 9 Temporary North of Mines for further information.

St. Paul Student Council

The St. Paul Campus Student Council acts as an arm of the Minnesota Student Association on the St. Paul Campus. The council maintains several standing committees and includes twenty members representing the students in the Colleges of Agriculture, Forestry, Home Economics, and Veterinary Medicine.

Judiciary Boards

The University has several committees and agencies known as Judiciary Boards which deal directly with problems of non-academic student misconduct or unlawful behavior. Judiciary Boards are established in many individual student organizations, University residences, and the Office of Dean of Students. All judiciary committees, made up of both students and faculty members, have major responsibilities and authority in dealing with student problems.

College Boards

COLLEGE OF LIBERAL ARTS BOARD

The Arts College Intermediary Board which offices at 101 Johnston Hall serves as a liaison between the students of the Arts College and the administration and faculty. The Board, made up of twenty-four members, appoints three freshman members at the beginning of Fall Quarter. Some of the standing committees are: Relations, Curriculum, Instruction, Student Personnel, Placement and Administration. In addition, the Board maintains a Freshman Council and an Honors Council.

EDUCATION BOARD

The students of the College of Education are represented by the College of Education Student Board. This Board, in addition to maintaining student-faculty relations, provides a medium for publicity and public relations for all education organizations. The Education Board has one representative from each departmental club within the College and five members-at-large elected by the College student body. Inquire at 242 Burton Hall for further information.

GENERAL COLLEGE BOARD

In General College the faculty-student relations are maintained by the General College Board. One of the main functions of this Board is to acquaint the College students with the purposes and curriculum of a general education and to present student view points to the administration. The Board has fifteen full-time members, five alternates elected in the fall, and three faculty members. The General College Board offices at 325 Nicholson Hall.

TECHNICAL COMMISSION

The Technical Commission, 133 Main Engineering, is a federation of the professional societies of the College of Engineering and Architecture, the School of Chemistry, and the School of Mines and Metallurgical Engineering. Composed of eighteen students and faculty members, the Technical Commission serves as an intermediary board for students of the Institute of Technology.

SPECIAL GROUPS FOR NEW STUDENTS

Most of the following groups for new students are represented at booths in the Activities Mart of Welcome Week. Information concerning them may also be obtained at the locations listed.



Freshman Cabinet

The Minnesota Student Association sponsors the Freshman Cabinet as an opportunity for freshmen who are interested in participating in student government. The Cabinet is composed of forty freshmen selected during Welcome Week for their potential, service, and leadership. The Cabinet undertakes a number of projects during the year to help students gain worthwhile experience and skills in student affairs and government. Freshmen are encouraged to participate on committees and may apply at the MSA office, 213 Coffman Union.

College of Liberal Arts Freshman Council

The Arts College Intermediary Board sponsors the Freshman Council to represent the freshman of the College of Liberal Arts. The Council, composed of twenty-six members, strives to provide workable solutions for the various problems of incoming students. Inquire at 101 Johnston Hall for membership.

Union Board Council

The Union Board Council is a freshman leadership training group. The Council provides freshmen with many opportunities to plan and coordinate extracurricular activities at the Union. The Council is sponsored by the Union Board of Governors, 231 Coffman Union, and includes social programs, social service programs, and joint meetings with other freshman groups in its schedule.

St. Paul Campus Freshman Board

The freshmen of the St. Paul Campus are served by the St. Paul Campus Freshman Board. Twenty-five freshmen interested in leadership are chosen to participate. The program includes discussion of campus issues with faculty and upperclassmen in the informal atmosphere of faculty members' homes and participation in various all campus projects such as the Christmas Assembly. The Board offers excellent opportunity for the freshman to learn the workings of the University.

Rooter Club

The organized student cheering and card section of football games is called the Rooter Club. The Rooters promote spirit, cooperation with the pep squad, and entertainment at games. Interested students may join by application. Members must attend one training session during the first week of school and all football games and are entitled to keep their special jackets at the end of the season. Applications can be obtained at 213 Coffman Union.



The Greek System

SORORITIES

There are sixteen sororities on the Minneapolis Campus and three on the St. Paul Campus, all of which maintain resident houses. Any eligible woman student regularly enrolled in the University who has a 2.0 grade point average may be invited to join a sorority. Panhellenic Council, the governing body of the Minneapolis Campus sororities, and Inter-Sorority Council, the governing group of the St. Paul Campus sororities, establish and regulate a definite rushing calendar. All sororities maintain scholarship, international, social, human relations, and service programs for their members.

For further information concerning sororities consult the Panhellenic Office at 203 Coffman Union or the Sorority Advisor in the Student Activities Bureau.



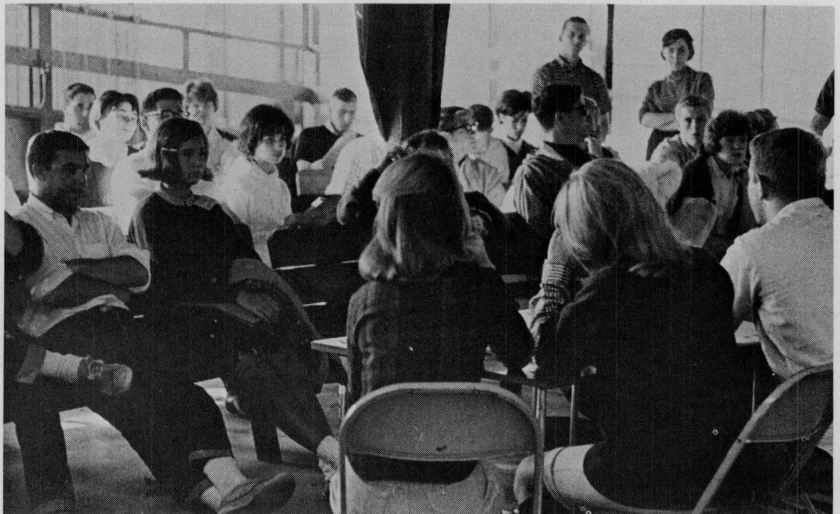
Sororities	Addresses	Phone
Alpha Chi Omega	915 University Avenue S.E.	335-7800
Alpha Delta Pi	1000 Fifth Street S.E.	336-4373
Alpha Epsilon Phi	928 Fifth Street S.E.	333-0297
Alpha Gamma Delta	401 11th Avenue S.E.	331-3357
Alpha Omicron Pi	1121 Fifth Street S.E.	331-1381
Alpha Phi	323 Tenth Avenue S.E.	332-8516
Chi Omega	315 Tenth Avenue S.E.	333-6529
Clovia	1502 Raymond Avenue, St. Paul	646-3786
Delta Delta Delta	316 Tenth Avenue S.E.	333-4527
Delta Gamma	1026 Fifth Street S.E.	335-4197
Gamma Omicron Beta	2067 Carter Avenue, St. Paul	646-3970
Gamma Phi Beta	311 Tenth Avenue S.E.	333-7285
Kappa Alpha Theta	1012 Fifth Street S.E.	333-5509
Kappa Delta	1026 Sixth Street S.E.	331-1863
Kappa Kappa Gamma	329 Tenth Avenue S.E.	333-0389
Lambda Delta Phi	1276 Raymond Avenue, St. Paul	645-6563
Phi Mu	330-11th Avenue S.E.	331-2618
Pi Beta Phi	1109 Fifth Street S.E.	331-1339
Sigma Delta Tau	1121 University Avenue S.E.	331-7935

FRATERNITIES

Fraternities at the University of Minnesota provide their members with valuable experiences in fellowship and social and personal development. Most chapters offer facilities for student housing and eating. These fraternal groups hold regular membership drives or rushing periods. During these rushing periods, students who wish to join should indicate their interest to the Interfraternity Council, the coordinating body of all the fraternities, at 203 Coffman Union or the Fraternity Advisor in the Student Activities Bureau.

Once a student has accepted an invitation to join a fraternity, he enters into a period of pledgship which generally lasts a quarter. Active membership in the fraternity is then available if the student satisfies the academic requirements for initiation.

Fraternities	Addresses	Phone
Acacia	1206 Fifth Street S.E.	331-5941
Alpha Delta Phi	1725 University Avenue S.E.	331-1326
Alpha Epsilon Pi	526-11th Avenue S.E.	333-0533
Alpha Gamma Rho (Agriculture)	2060 Carter Avenue, St. Paul	646-0591
Alpha Phi Alpha		
Alpha Tau Omega	1821 University Avenue S.E.	331-5887
Beta Sigma Psi	1103 Fifth Street S.E.	331-1507
Beta Theta Pi	1625 University Avenue S.E.	331-2313
Chi Phi	315-19th Avenue S.E.	331-3974
Chi Psi	1515 University Avenue S.E.	331-5467
Delta Chi	1601 University Avenue S.E.	331-7916
Delta Kappa Epsilon	1711 University Avenue S.E.	331-7858
Delta Sigma Pi		
Delta Tau Delta	1717 University Avenue S.E.	331-5997
Delta Theta Sigma (Agriculture)	1485 Cleveland Avenue, No. St. Paul	645-8787
Delta Upsilon	1112 Sixth Street S.E.	331-6889
Farmhouse (Agriculture)	1505 Cleveland Avenue, No. St. Paul	646-3196
Kappa Sigma	1125 Fifth Street S.E.	331-2792
Phi Delta Theta	1011 Fourth Street S.E.	336-9359
Phi Epsilon Pi	1901 University Avenue S.E.	331-2388
Phi Gamma Delta	1129 University Avenue S.E.	336-8661
Phi Kappa Psi	1609 University Avenue S.E.	331-1335
Phi Sigma Kappa	317-18th Avenue S.E.	331-1108
Psi Upsilon	1617 University Avenue S.E.	331-1114
Sigma Alpha Epsilon	1815 University Avenue S.E.	331-5986
Sigma Alpha Mu	311-11th Avenue S.E.	333-6527
Sigma Chi	1623 University Avenue S.E.	331-1723
Sigma Nu	307-16th Avenue S.E.	331-1732
Theta Chi	315-16th Avenue S.E.	331-7929
Theta Delta Chi	400 Tenth Avenue S.E.	339-1266
Triangle (Engineering)	521 12th Avenue S.E.	331-7969



Professional Fraternities and Sororities

Groups are organized in almost every department of the University to encourage scholarship, ideals, achievement, and fellowship in professional fields. Students with similar professional and vocational aims have joined together to promote their organizations. Those groups indicated by asterisks maintain residence with service accommodations.



Professional Fraternities

- *Alpha Chi Sigma (Chemical)
- Alpha Delta Sigma (Advertising)
- *Alpha Kappa Kappa (Medical)
- *Alpha Kappa Psi (Business)
- Alpha Mu Sigma (Mortuary Science)
- Alpha Omega (Dentistry)
- Alpha Psi (Veterinary Medicine)
- *Alpha Rho Chi (Architecture)
- Alpha Tau Alpha (Agricultural Education)
- Anchor and Chain (NROTC)
- *Delta Sigma Delta (Dentistry)
- Delta Sigma Pi (Business)
- Delta Theta Phi (Law)
- *Gamma Eta Gamma ((Law)
- Iota Rho Chi (Industrial Relations)
- Kappa Alpha Mu (Photo Journalism)
- *Kappa Eta Kappa (Engineering)
- Kappa Psi (Pharmacy)
- Mu Beta Chi (Business)
- Mu Iota Epsilon (Industrial Education)
- *Nu Sigma Nu (Medical)
- *Phi Beta Pi (Medical)
- *Phi Chi (Medical)
- *Phi Delta Chi (Pharmacy)
- *Phi Delta Epsilon Kappa (Medical)
- Phi Delta Phi ((Law)
- Phi Epsilon Kappa (Physical Education)
- Phi Mu Alpha (Music)
- *Phi Rho Sigma (Medical)
- Phi Sigma Epsilon (Business & Marketing)
- *Psi Omega (Dentistry)
- Cigma Alpha Sigma (Engineering)
- Sigma Delta Chi (Journalism)
- *Theta Tau (Engineering)
- *Xi Psi Phi (Dentistry)

Professional Sororities

- Alpha Delta Theta (Medical Technology)
- *Alpha Epsilon Iota (Medical)
- Alpha Kappa Gamma (Dental Hygiene)
- Alpha Tau Delta (Nursing)
- Kappa Epsilon (Pharmacy)
- Phi Delta (Business)
- Phi Upsilon Omicron (Home Economics)
- Sigma Alpha Iota (Music)
- Tau Beta Sigma (Music)
- Theta Sigma Phi (Journalism)

STUDENT CONDUCT





The University of Minnesota expects that each student will obey the laws enacted by federal, state, and local governments. In addition, there are certain rules and regulations governing student conduct which have been established by the Regents, administrative officials, University Senate, college and department faculties, and residence hall groups.

It is each student's responsibility to be alert to avoid the types of misconduct mentioned here and any other misconduct harmful to the University, its staff and students.

Courtesy to your instructors and University staff members, to other students, and to the public is expected of each of us and a failure to show this type of responsibility is unacceptable.

Each student is expected to be honest in his work. Dishonesty in assignments, examinations, or other academic work is considered an extremely serious offense by the faculty and students.

University policy specifies that the property of the University as well as that of individuals should be respected. Theft of any kind, whether of money or other property, is unacceptable. The destruction or mutilation of books, magazines, or other library material in University libraries is another type of conduct which is not condoned. Equally so is unauthorized use of, damage to, or destruction of University buildings, equipment, and property.

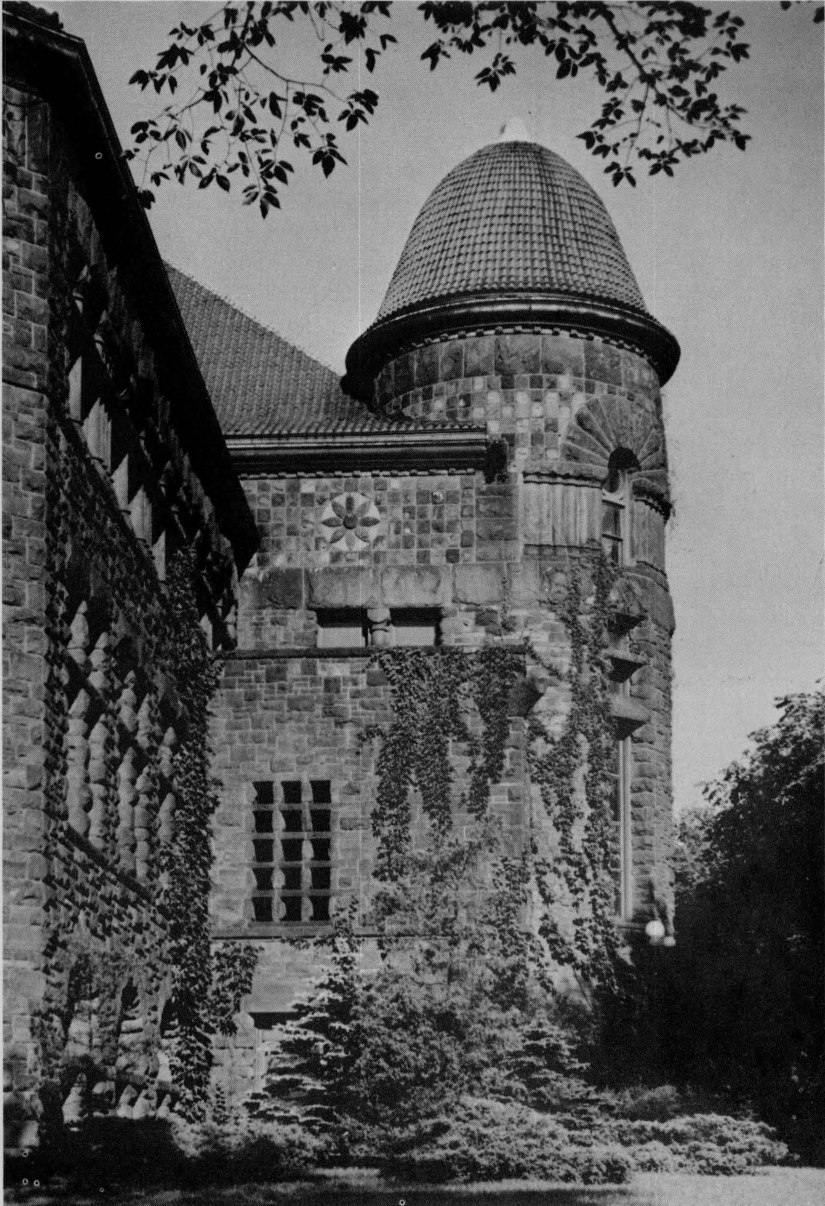
Drinking on campus or in the residences is another type of behavior not approved by the University. Drunkenness or any type of behavior which is disturbing or disorderly reflects on the University and therefore is contrary to the best interests of the University and other students.

Misuse of University identification to obtain privileges to which you or to which others are not entitled under existing regulations is a University offense.

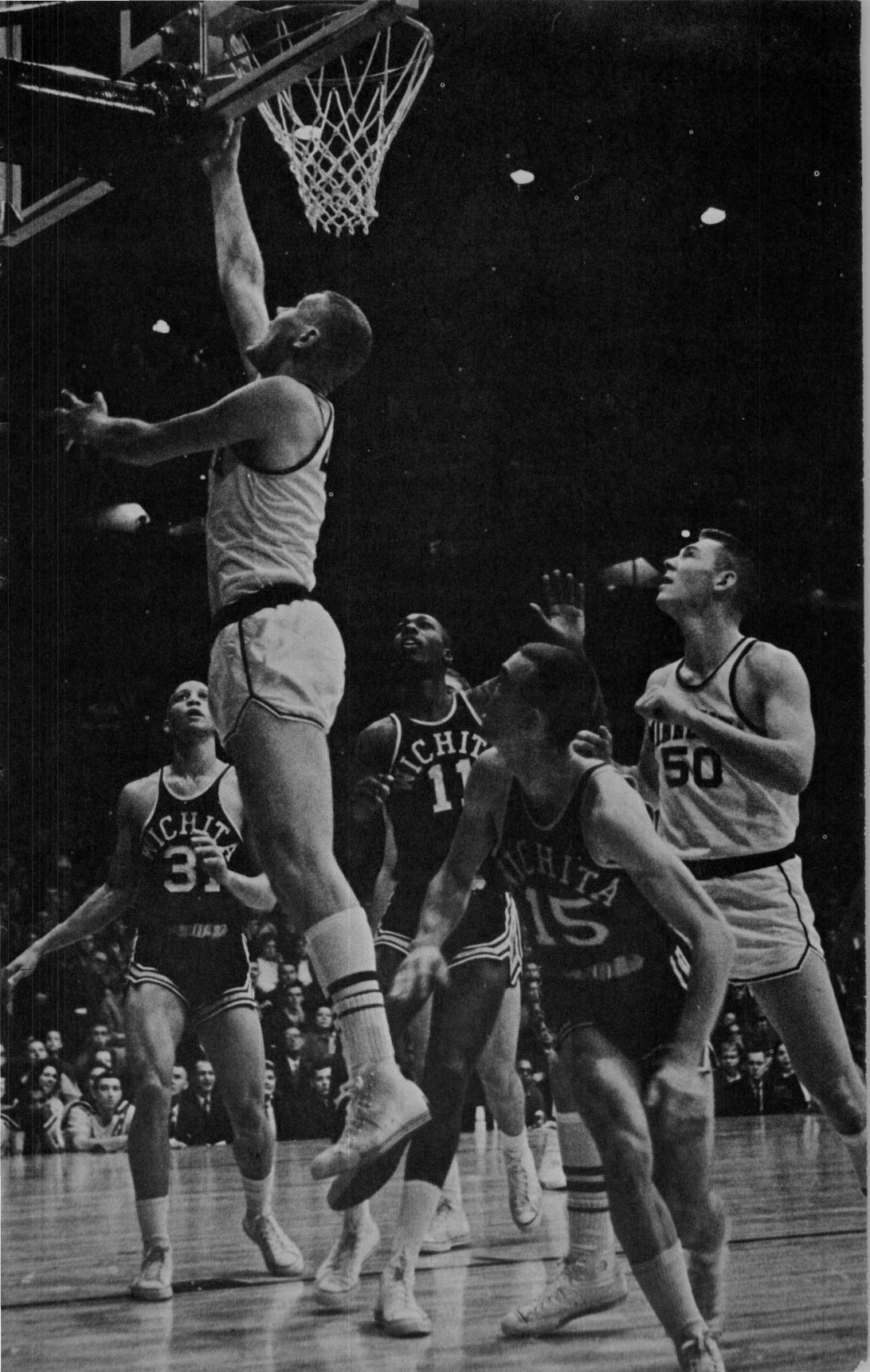
Indecent and immoral conduct discredits both the offending individuals and the University and is contrary to the best interests of the University community.

The residence of your choice will have special additional rules. Most rules for student residence halls exist simply to provide for better living, as for example, established study hours, use of facilities, and the manner in which bills are handled. The University also has certain standards established concerning entertainment, hours, and room visitation. You should acquaint yourself with the rules of your residence unit upon your arrival.

The All-University Committee on Student Behavior and the Office of the Dean of Students are granted authority by the Regents to take necessary action in any case in which the behavior of the student reflects unfavorably on the University or is unacceptable behavior to the University community. Judiciaries are organized in the residences to hear and take appropriate actions on most incidents of student misconduct by residents in the halls. The All-University Judiciary Council adjudicates violations of regulations by student groups. The membership of both All-University committees includes students as well as staff.



ABOUT ATHLETICS



Student Athletic Tickets

The student season ticket provides admission to football, basketball, hockey, baseball, track, wrestling, gymnastics, swimming, and all other home Minnesota Inter-collegiate Athletic events during the school year 1967-68. It does not admit to exhibitions or other special events or contests, such as the Holiday Hockey Series and championship tournaments. Student seating capacities for basketball and hockey for the more popular contests may require an individual game special exchange coupon for admittance at no extra charge. Advance announcement will be in the MINNESOTA DAILY.

WHO IS ELIGIBLE TO PURCHASE TICKETS?

Eligible undergraduate students include all those regularly enrolled in any of the colleges of the University who are registered for a minimum incidental fee which is required of students taking six or more credits per quarter.

General extension students are eligible but they must be registered for a minimum of three credits of extension classes (no correspondence T.V. or audit courses). Graduate students must be registered as shown by a receipted fee statement or present a letter signed by the department head certifying delayed registration. Students who are also University civil service employees are not eligible to purchase a staff-employee season ticket. They must purchase the Student Athletic card.

A married student may purchase one additional ticket for husband or wife, but satisfactory evidence of marital status must be made by both in person. In all cases both husband and wife must be present to obtain the two tickets. The price of the regular student ticket is \$15.00. The husband or wife non-student adjacent seat is also priced at \$15.00.

A SPRING SALE

A Spring quarter sale was held in May for the upper classmen with a lottery during the summer. Those students who applied in the spring pick up their tickets during Welcome Week. Tickets remaining after the Summer lottery are sold directly to students applying in the fall.

WHEN AND WHERE DO YOU PURCHASE TICKETS IN THE FALL?

Williams Arena Lobby on University Avenue across from the Stadium.

DATES — Monday, September 18 to Saturday, September 23.

Hours — 9:00 a.m. — 4:00 p.m. daily. Saturday until 12:00 noon.

Rooter Club applications will be accepted by the Rooter Club representatives at Williams Arena during Welcome Week.

Tickets will continue to be sold after Fall quarter classes begin Monday, September 25, 1967.

WHAT IS NEEDED TO PURCHASE THE TICKETS?

Students must have a paid fall quarter fee statement signed in ink on the back, a University of Minnesota ID card with picture on the back and

cash or check for the exact amount.

Checks made payable to the University of Minnesota for the correct amount will be accepted, but the name, address, and telephone number must be legibly printed below the signature.

HOW ARE TICKETS ASSIGNED IN THE FALL?

The student fills out an application at the sale in Williams Arena lobby. The application, money, and proper I.D. is turned in and the student is given his reserved seat ticket. These are seats available after the summer lottery. Students may sit in groups — maximum 20 per group — but they must all apply in person and at the same time.

Students will have a reserved ticket for the first home game Saturday, September 23, 1967, which is prior to the first day of classes. Tickets will continue to be sold after Fall quarter classes begin.

Students with unpaid fee statements can make special arrangements to attend the first game; however they must have their I.D. card. Call the Ticket Office (373-3181) for further information.

WHEN DO YOU PICK UP YOUR RESERVED SEAT TICKET?

Reserved seat tickets may be picked up at Williams Arena, Thursday and Friday, September 29 and 30 from 9:00 a.m. until 4:00 p.m. and Saturday, October 1 from 9:00 a.m. until 2:00 p.m. Student season tickets may be purchased after September 28, but assignments will be made in only those seats which remain after the lottery.



Varsity Sports

FOOTBALL



Head coach Murray Warmath, a University of Tennessee graduate, has been head coach at Minnesota for more than a decade. He was named "Coach of the Year" in 1961.

A national championship and two Rose Bowl appearances have highlighted recent University of Minnesota football history. National titles are nothing new to Minnesota football, however. The Gophers were undefeated national champs in '34, '35, '40 and '41.

1967 Varsity Football Schedule

September 23
September 30
October 7
October 14
October 21
October 28
November 4
November 11
November 18
November 25

Utah — Here
Nebraska at Lincoln
Southern Methodist — Here
Illinois at Urbana
Michigan State — Here
Michigan — Here
Iowa at Iowa City
Purdue at Lafayette
Indiana — Here
Wisconsin — Here

BASKETBALL

Under John Kundla, a University of Minnesota graduate and one of its all-time stars in basketball, the Gophers have ranked high in Big Ten competition for many years.

The Gophers with their fast break, clever ball handling, and intricate play patterns are great crowd pleasers and popular from coast to coast.

Home of the basketball Gophers is Williams Arena, the worlds largest indoor collegiate athletic facility.

1967-68 Varsity Basketball Schedule

Home Games: Preliminary—6:15 p.m. Varsity—8:00 p.m.

December 2	SOUTH DAKOTA UNIVERSITY — Here
December 4	Drake University — Away
December 5	KANSAS STATE UNIVERSITY — Here
December 16	NORTH DAKOTA UNIVERSITY — Here
December 18	University of Houston — Away
December 20	Creighton University — Away
December 22	OHIO UNIVERSITY — Here
December 27-30	Los Angeles Classic — Away
January 6	Indiana University — Away
January 13	UNIVERSITY OF ILLINOIS — Here
January 16	Northwestern University — Away
January 20	University of Iowa — Away
January 30	UNIVERSITY OF WISCONSIN — Here
February 3	INDIANA UNIVERSITY — Here
February 5	University of Michigan — Away
February 10	Purdue University — Away
February 13	NORTHWESTERN UNIVERSITY — Here
February 17	OHIO STATE UNIVERSITY — Here
February 24	UNIVERSITY OF MICHIGAN — Here
February 27	University of Wisconsin — Away
March 2	Michigan State University — Away
March 4	UNIVERSITY OF IOWA — Here

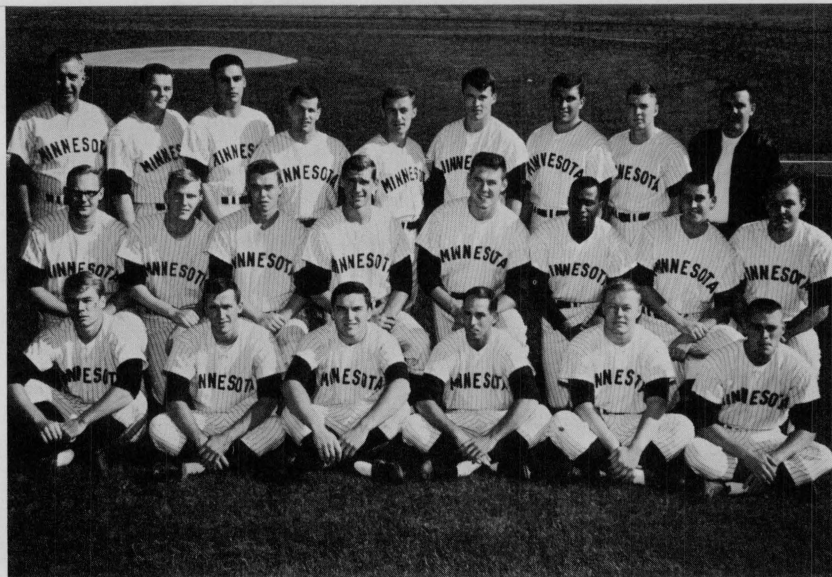
HOCKEY



The University of Minnesota has consistently produced one of the best college hockey teams in the nation. Coached by Glen Sonmor, the hockey Gophers are noted for their exciting and entertaining style of play.

Minnesota has produced more native collegiate All-Americans than any other team in the United States. Several former Gophers were outstanding stars on the 1960 Olympic hockey team that gave the United States its first Olympic ice hockey championship in history.

BASEBALL



Few college baseball teams in the United States can equal the record compiled by the University of Minnesota during the past decade.

Under the coaching of Dick Siebert, a former major league star, the baseball Gophers won Big Ten Conference championships in 1956, 1958, 1960, and 1964. Notable was the feat of capturing National Collegiate Athletic Association championships in 1956, 1960, and 1964.

GOLF

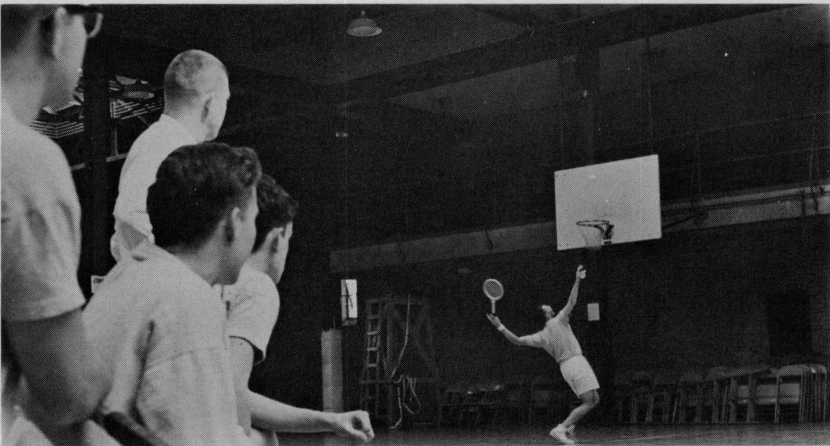
The intercollegiate golf program at the University of Minnesota is directed by Coach Les Bolstad and was highlighted in recent years by the Gophers capturing the 1963 Big Ten crown.

With its indoor golf gymnasium in the South Tower of Memorial Stadium, its 9-hole short course, and its championship 18-hole course all available without extra charge to students with fee statements, Minnesota offers student golfers opportunities for instruction, practice, and play.

GYMNASTICS

Now in his 38th year as head gymnastics coach at the University of Minnesota, Ralph Piper commands nation-wide respect for his outstanding record. During his tenure here he has produced six Big Ten championships, and 33 Conference and six N.C.A.A. individual champions. Under his guidance Minnesota gymnastics teams have compiled a 75-plus win percentage. The Gopher meets are held in the third floor gym in Cooke Hall, and following basketball games in Williams Arena.

TENNIS



The year-around tennis facilities and the coaching of Joe Walsh, nationally recognized instructor, have made tennis a popular sport at the University.

The Gopher varsity and freshman squads work out in the winter on the third floor courts in Cooke Hall, and in the outdoor season on the University courts.

SWIMMING

Intercollegiate swimming at the University of Minnesota under the coaching of Bob Mowerson is enjoying a most successful period of development. The 1964 swimmers won 7 of 8 dual meets, placed 4th in the Conference, and 5th in the N.C.A.A. Many of Minnesota's swimmers have set and held world collegiate records.

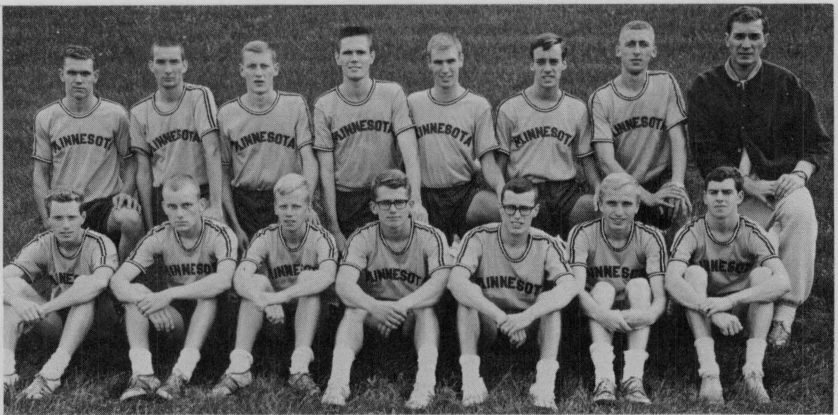
Minnesota's home meets are held in the Cooke Hall exhibition pool which was also the site of the 1964 Big Ten championships. An adjacent practice pool is used by team members for practice, and by faculty, staff, and students for recreational swimming.

WRESTLING

Intercollegiate wrestling at the University of Minnesota is benefiting from the rapidly-expanding and improving high school program in the State.

Under the direction of Coach Wally Johnson, the Gophers have done well in the Big Ten and nation by capturing Big Ten team titles in 1957 and '59. The Gopher home wrestling meets are held in Williams arena and the Field House.

TRACK AND CROSS COUNTRY



Since winning the National Collegiate Athletic Association championship in 1948, the University of Minnesota has been recognized as a leading power in track and cross country. In past years, two Minnesota athletes held the world records for the discus and in 1964 the varsity cross country squad was the Big Ten champion.

Roy Graik came to Minnesota as head coach in 1963. Cross country in the fall, indoor track in the Field House in the winter, and outdoor work in Memorial Stadium in the spring fill his schedule of track activities.

The Gophers have a strong record in dual meets and enter such major events as the Kansas and Drake Relays every year.

Intramural Sports

The Intramural Department attempts to provide every student and staff member with the opportunity to participate in organized and informal sports activities as regularly as time and interest permit. Through participation it is hoped that the individual will develop an appreciation of the worthwhile use of leisure time and a wholesome attitude toward physical activity. Ability is not important; all one needs is desire.

In the Men's division athletic activities are organized on a team and individual basis, thereby enabling all to participate. Teams are divided into independent, dormitory, academic fraternity, athletic clubs, professional fraternity, and St. Paul Campus leagues with the various winners competing for the All-University Class A, B, C or D championships of the sport involved.

The entire program is free with the exception of bowling for which there is a small fee. The activities included in the intramural program are the following: archery, badminton, baseball, basketball, bowling, co-recreation sessions, cross country, fencing, free throw contest, golf, handball and paddleball, hockey, judo, karate, softball, squash, swimming, table tennis, tennis, touch football, track, volley ball, and wrestling.

In the Women's division the athletic activities are organized in a slightly different fashion. There are individual and team sports and also sport clubs. The teams are divided into independent, dormitory and sorority, and club classes. The clubs provide girls who excel in a particular field practice and improvement of their skills.

As in the Men's division, activities are all free with the exception of bowling. The open activities included are the following: archery, badminton, basketball, bowling, golf, judo, modern dance, riding, swimming, tennis, trampoline, and volley ball. The clubs include aquatic league, badminton club, golf club, orchesis (modern dance), riding club, tennis club, and team sports club (volley ball, basketball, softball, and field hockey).

The facilities for intramural activity at Minnesota are centered in Cooke Hall, Norris Women's Gymnasium, Coffman Union, and Memorial Stadium. Men interested in entering a team in any activity sponsored by the Men's Intramural division should either call the I-M office, 373-4200 or come to Room 203 Cooke Hall. Women interested in participating in intramurals or trying out for clubs should call 373-3206 or visit Room 108 in Norris Gymnasium.



UNIVERSITY CALENDAR



University Calendar
Academic Year 1967-1968

FALL QUARTER

July 31-September 22		Fall registration. Orientation program for new students. (Dates for the various colleges will be announced in mailed instructions).
August 15		Last date to file application for fall admission to the undergraduate colleges
August 25	Friday	Graduate School application deadline for fall quarter.
September 1	Friday	Last date to file fall request for change of college within the University
September 4	Monday	Labor Day, holiday
September 15	Friday	Payment of fall quarter fees for students registered through September 8. Application deadline for adult special students.
September 15	Friday	Camps for new students, September 15-17; New Students Parents' Day, September 17; Welcome Week (Minneapolis-St. Paul), September 17-23.
September 22	Friday	Last day for registration and payment of fees for undergraduates (including adult special students)
September 25	Monday	Fall quarter classes begin
September 28	Thursday	Opening convocation; IV hour classes excused (Minneapolis-St. Paul)
September 29	Friday	Last day for registration and payment of fees for Graduate School students and for teachers in service
October 12	Thursday	Columbus Day, holiday
October 21	Saturday	Homecoming (Minneapolis-St. Paul)
November 2	Thursday	Senate meeting
November 11	Saturday	Veterans Day, holiday
November 23	Thursday	Thanksgiving Day, holiday
November 24-25		Classes excused (except Medical School and College of Veterinary Medicine)
December 1	Friday	Last day to file application for winter admission to the undergraduate colleges or for change of college within the University
December 5	Tuesday	Deadline for application for admittance to Graduate School, winter quarter
December 7	Thursday	Senate meeting; last day of instruction

December 8	Friday	Review for final examinations
December 9-15		Final examinations
December 16	Saturday	Fall quarter closes Commencement, 7:30 p.m.



WINTER QUARTER

December 25	Monday	Christmas Day, holiday
December 27-29		Orientation program; registration and payment of fees for new students in all undergraduate colleges (including adult special students)
December 28	Thursday	Last day for payment of winter quarter fees for students in residence fall quarter
January 1	Monday	New Year's Day, holiday
January 3	Wednesday	Winter quarter classes begin
January 9	Tuesday	Last day for registration and payment of fees for the Graduate School students and for teachers in service
February 1	Thursday	Senate meeting
February 12	Monday	Lincoln's Birthday, holiday
February 22	Thursday	Washington's Birthday, holiday
February 23	Friday	Graduate School application deadline for spring quarter
February 29	Thursday	Charter Day Convocation; IV hour classes excused (Minneapolis-St. Paul)
February 25-March 2		University of Minnesota Week
March 1	Friday	Last date to file application for spring admission to the undergraduate colleges or for change of college within the University
March 7	Thursday	Senate meeting; last day of instruction
March 8	Friday	Review for final examinations
March 9-15		Final examinations
March 14	Thursday	Payment of spring quarter fees due for students in residence winter quarter in undergraduate colleges

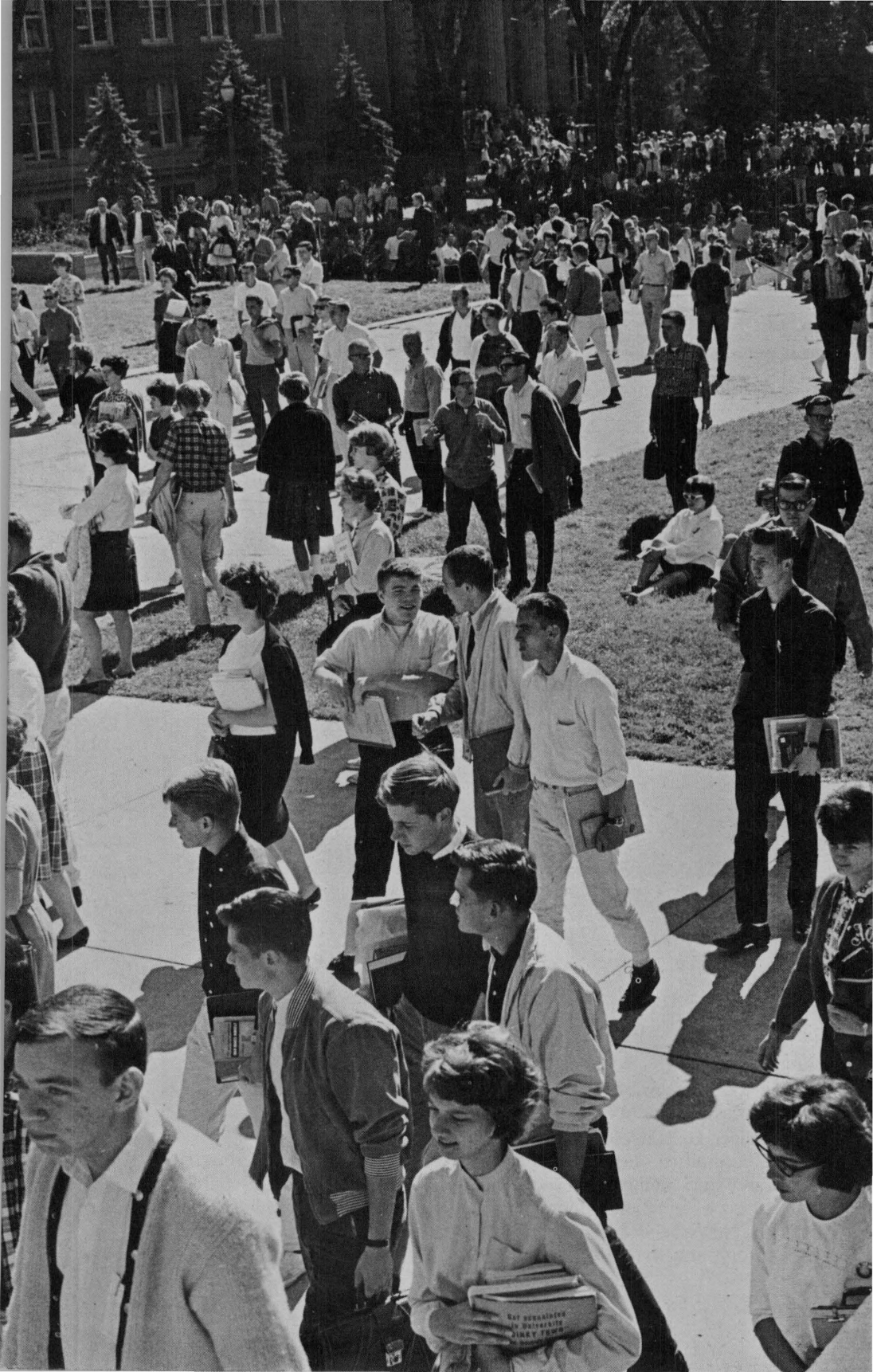
March 16	Saturday	Winter quarter closes Commencement 7:30 p.m.
SPRING QUARTER		
March 19-22		Orientation program; registration and payment of fees for new students and all undergraduates (including adult special students)
March 25	Monday	Spring quarter classes begin
March 29	Friday	Last day for registration and payment of fees for Graduate School students and for teachers in service.
April 12	Friday	Good Friday, holiday
April 25	Thursday	Senate meeting
May 20	Monday	Graduate School application deadline for first term of Summer Session
May 23	Thursday	Senate meeting Cap and Gown Day Convocation (Minneapolis-St. Paul), IV hour classes excused
May 30	Thursday	Memorial Day, holiday Review for final examinations
June 1-7		Final examinations
June 7	Friday	Baccalaureate Service, 4 p.m.
June 8	Saturday	Spring quarter closes Commencement, 7:30 p.m.
SUMMER SESSION, 1968		
FIRST TERM		
June 17	Monday	Registration for first term
June 18	Tuesday	First term classes begin; fees due
June 25	Tuesday	Graduate School application deadline for second term of Summer Session
July 4	Thursday	Independence Day, holiday
July 18	Thursday	Classes end at close of VI hour
July 19	Friday	First term closes Commencement, 4 p.m.
SECOND TERM		
July 22	Monday	Registration for second term
July 23	Tuesday	Second term classes begin; fees due
August 22	Thursday	Classes end at close of VI hour
August 23	Friday	Second term closes Commencement, 4 p.m.



The Staff

The staff responsible for compiling and editing the 1967-68 edition of the Moccasin Handbook for new students is David Lavalley, chairman, and Rodger D. Harrold, advisor.

The committee wishes to extend appreciation to the numerous students and staff members who contributed so generously to this publication. Special commendation is extended to the Gopher photography staff, the News Service staff, the Journalism Department, the Photography Laboratory, and the Athletic Department for their contributions of pictures.



Minnesota, hail to Thee!
Hail to Thee our college dear!
Thy light shall ever be
A beacon bright and clear.
Thy sons and daughters true
Will proclaim thee near and far
They will guard thy fame and adore thy name,
Thou shalt be their northern star.

Like the stream that bends to sea,
Like the pine that seeks the blue;
Minnesota, still for thee
Thy sons are strong and true.
From thy woods and waters fair,
From the prairies waving far,
At thy call they throng with their shout and song
Hailing thee their Northern Star.

Truman Rickard —'04
Arthur Upson —'05

