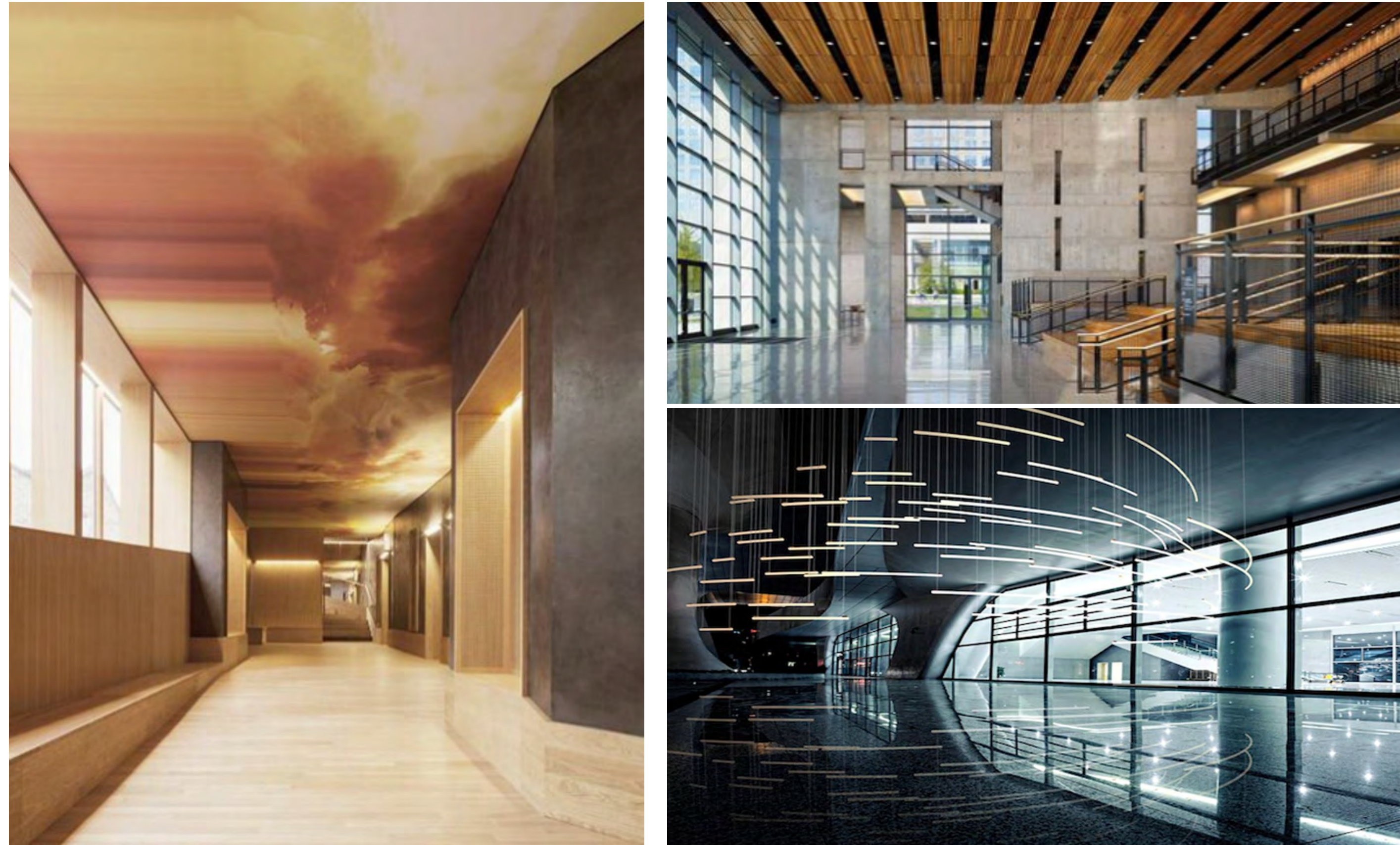


Site and Context

- 4th largest city in the metropolitan area, 6th largest city in Minnesota
- Continually growing population and households, including a 12.5% jump from 2000
- One of the most diverse communities in Minnesota



Project Goals

- Incorporate the branding throughout the spaces to uniquely represent Brooklyn Park
- Establish a sense of unity between the space by connecting the now separated areas
- Reimagine the layout of the space to be more functional that allows visitors to rediscover the space



Concept

Unique. United. Undiscovered.

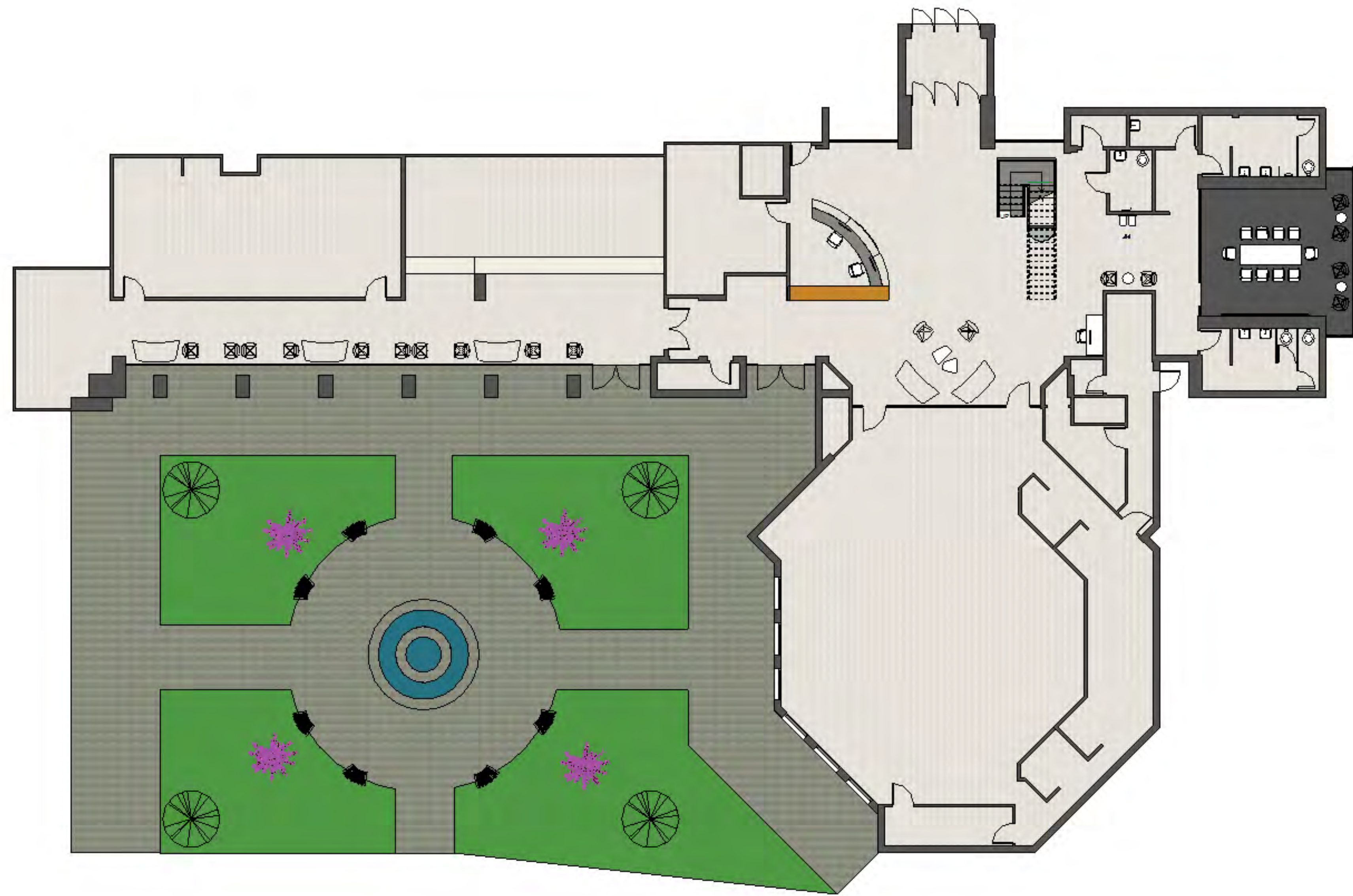
- Atrium Ceiling
- DMV Hallway Ceiling
- Trophy Case
- Atrium Lighting
- Minimizing Clutter
- Cohesive Materials
- Clear Sight Lines
- Utilizing Atrium Volume
- Accessible Courtyard
- Timeless and Inspiring Spaces

Brooklyn Park City Hall Redesign

Concept Board

This project was completed as part of the course IDES 2604: Interior Design Studio IV at the University of Minnesota, with support from the Resilient Communities Project (RCP). RCP is a program of the Center for Urban and Regional Affairs (CURA). To learn more, visit rcp.umn.edu.

This project was completed under the supervision of Dr. Abi Asojo and Justine Pliska, as part of the 2016–2017 RCP–City of Brooklyn Park partnership. The Brooklyn Park project leads were Angelica Klebsch and Wokie Freeman. This poster series was designed by Ryan Welters, Lauren Pahmeier, and Claire Brendel.

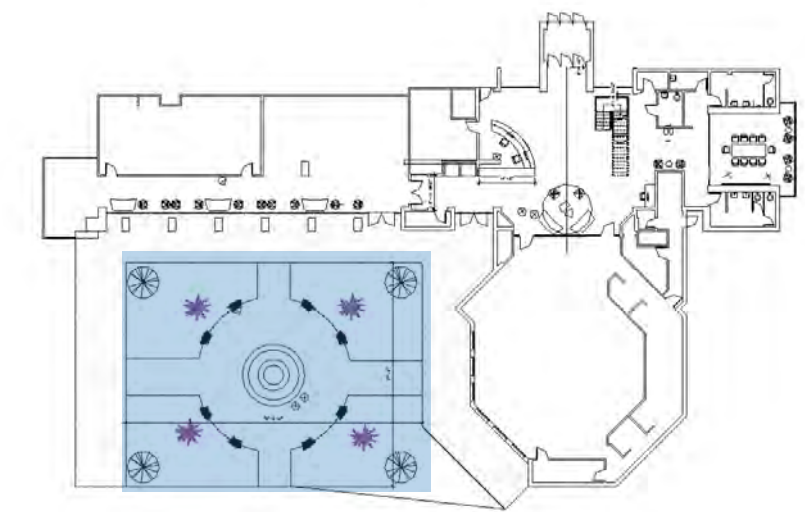


Rendered Floor Plan

Scale: 1/8" = 1'-0"



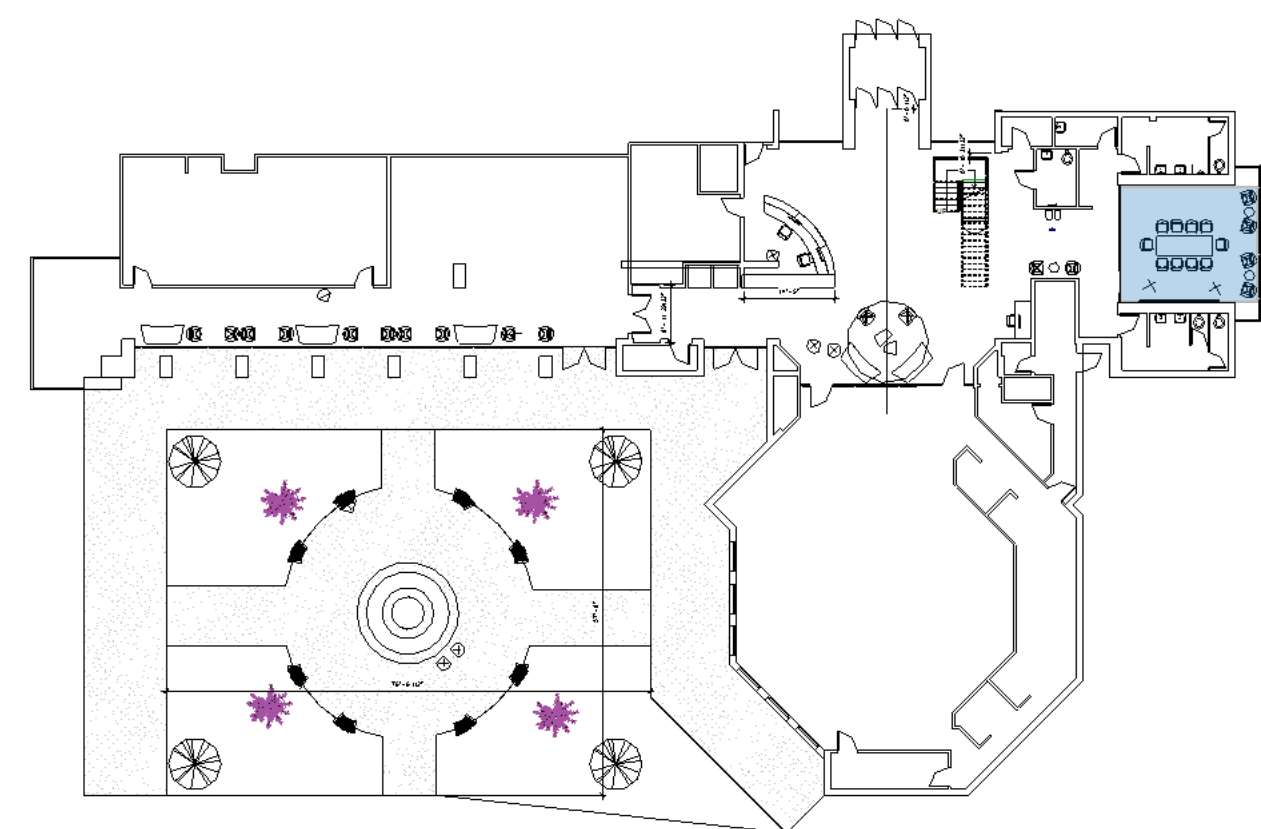
Garden & Fountain Perspective





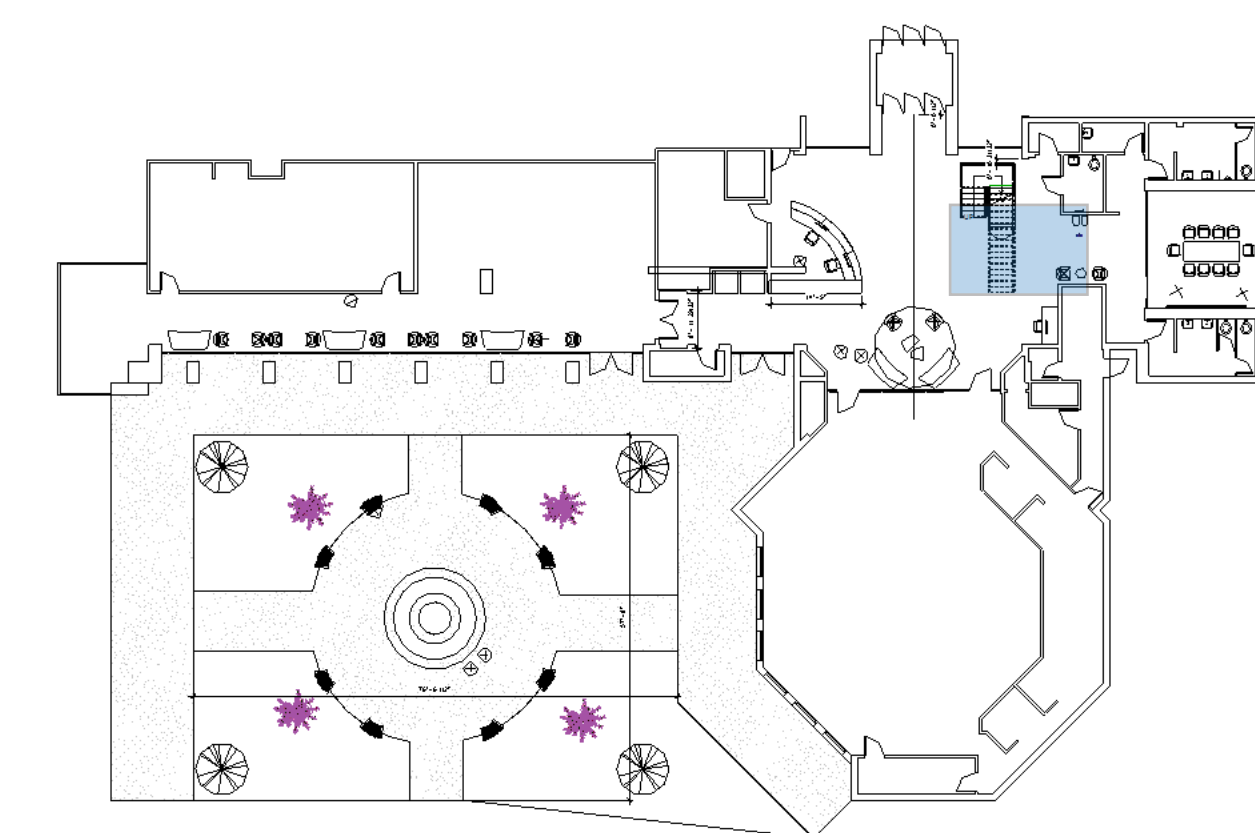
1

Kakata Conference Room



2

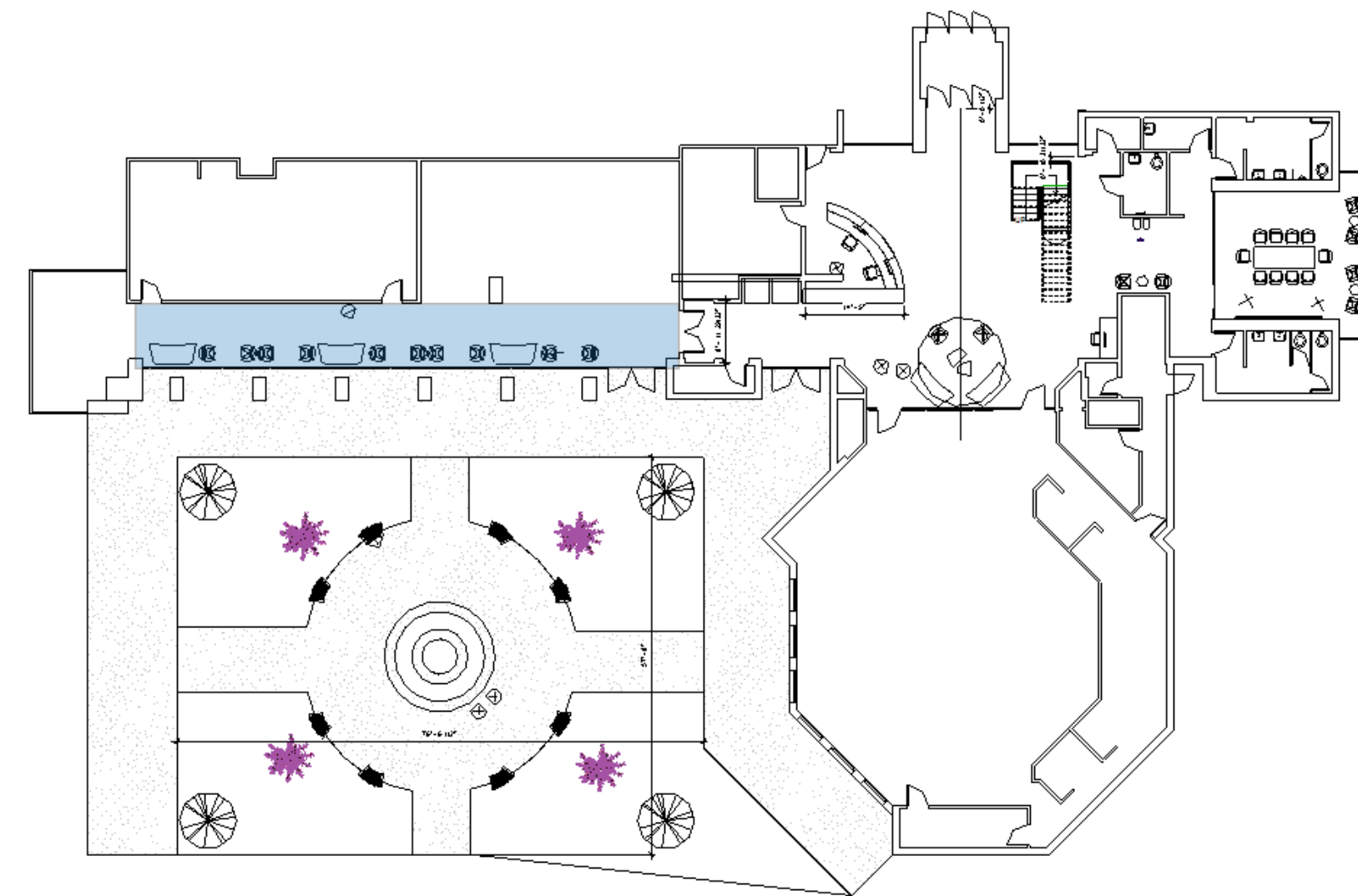
Trophy Case





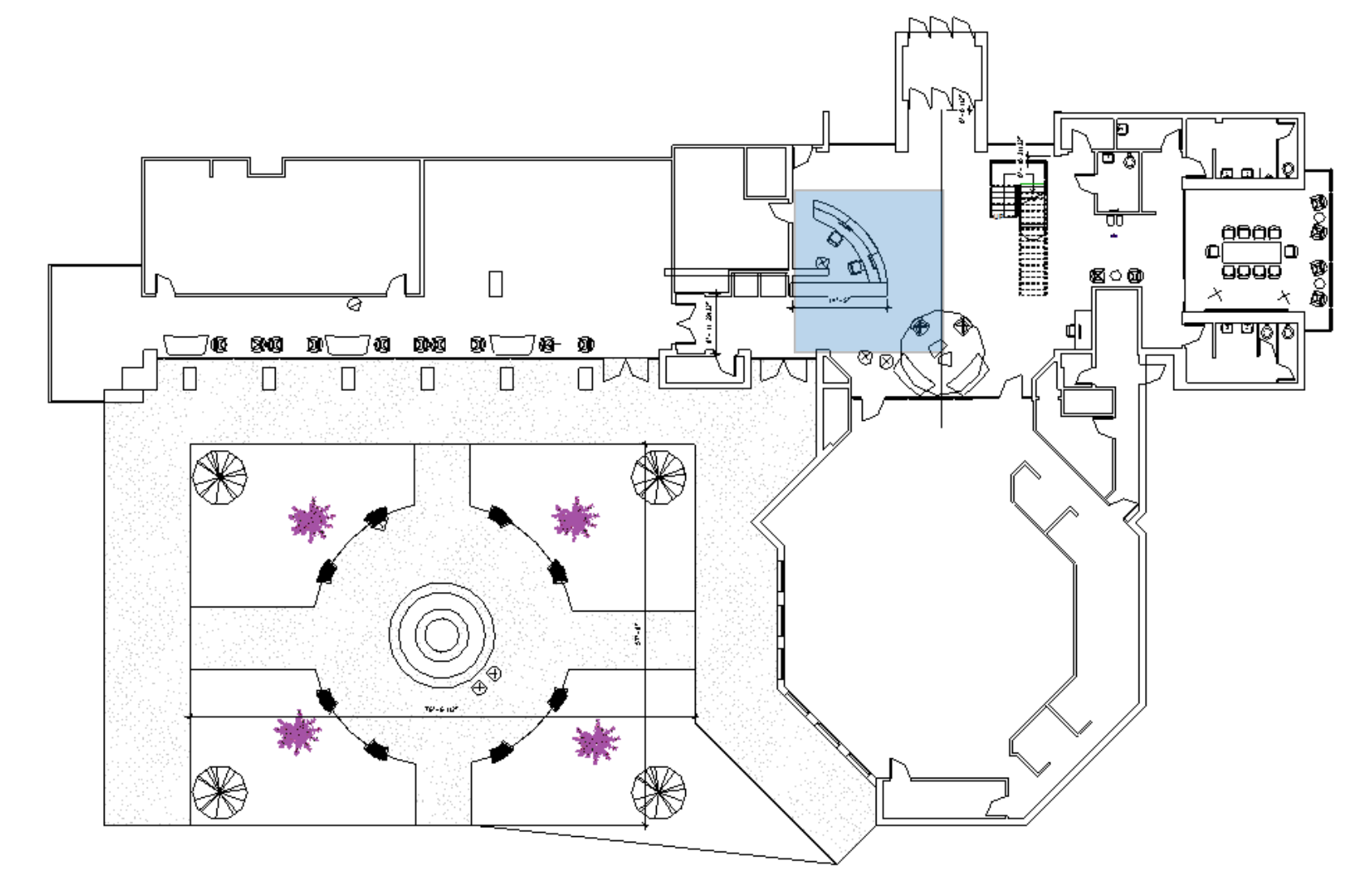
3

DMV Hallway



4

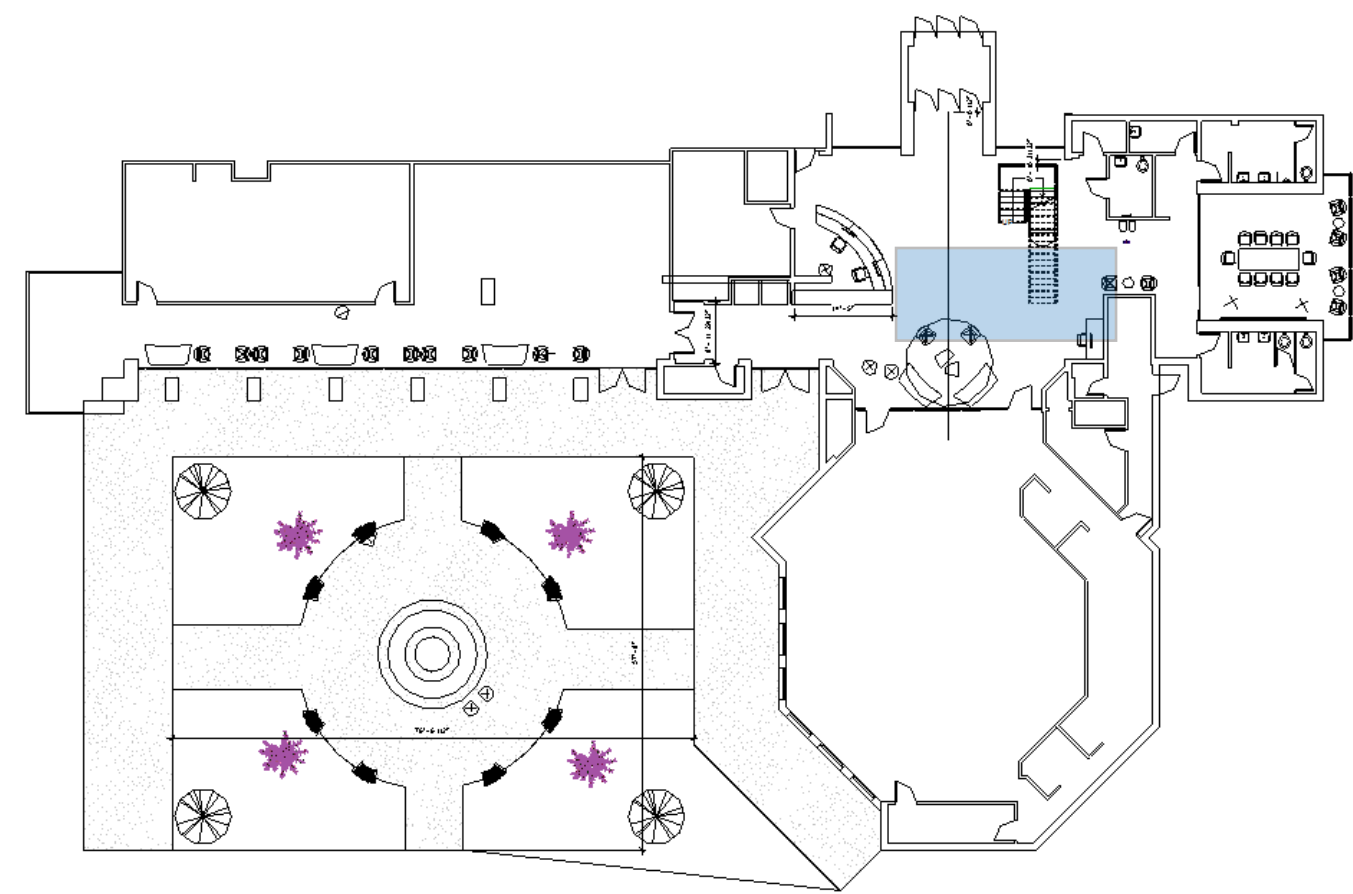
Custom Front Desk





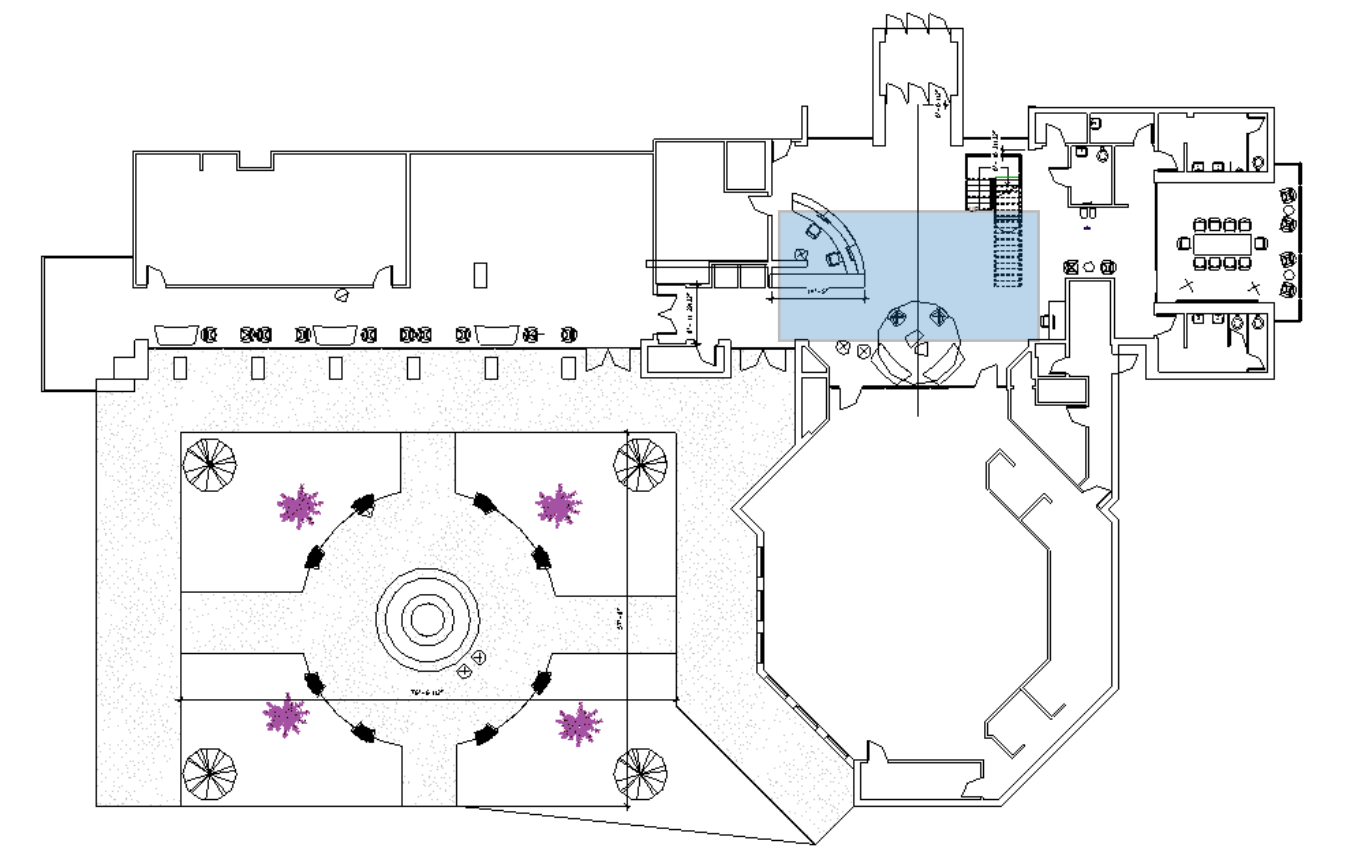
5

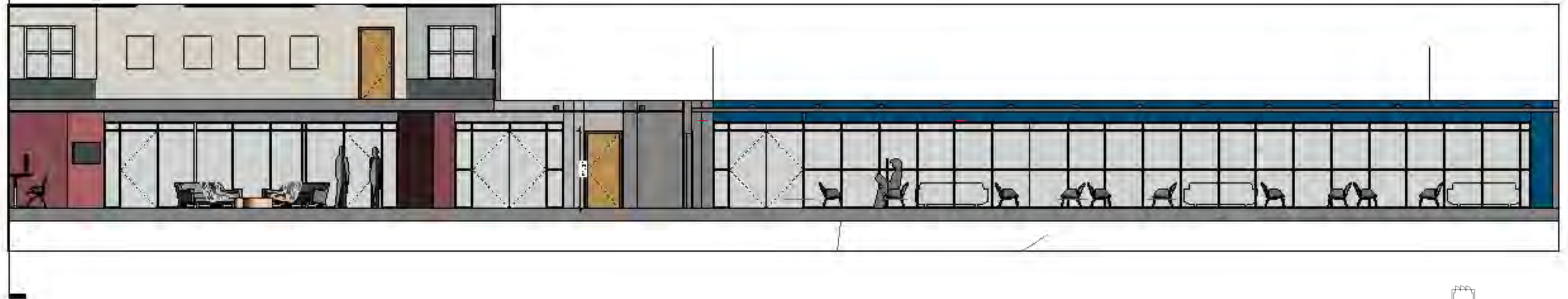
Atrium Perspective



6

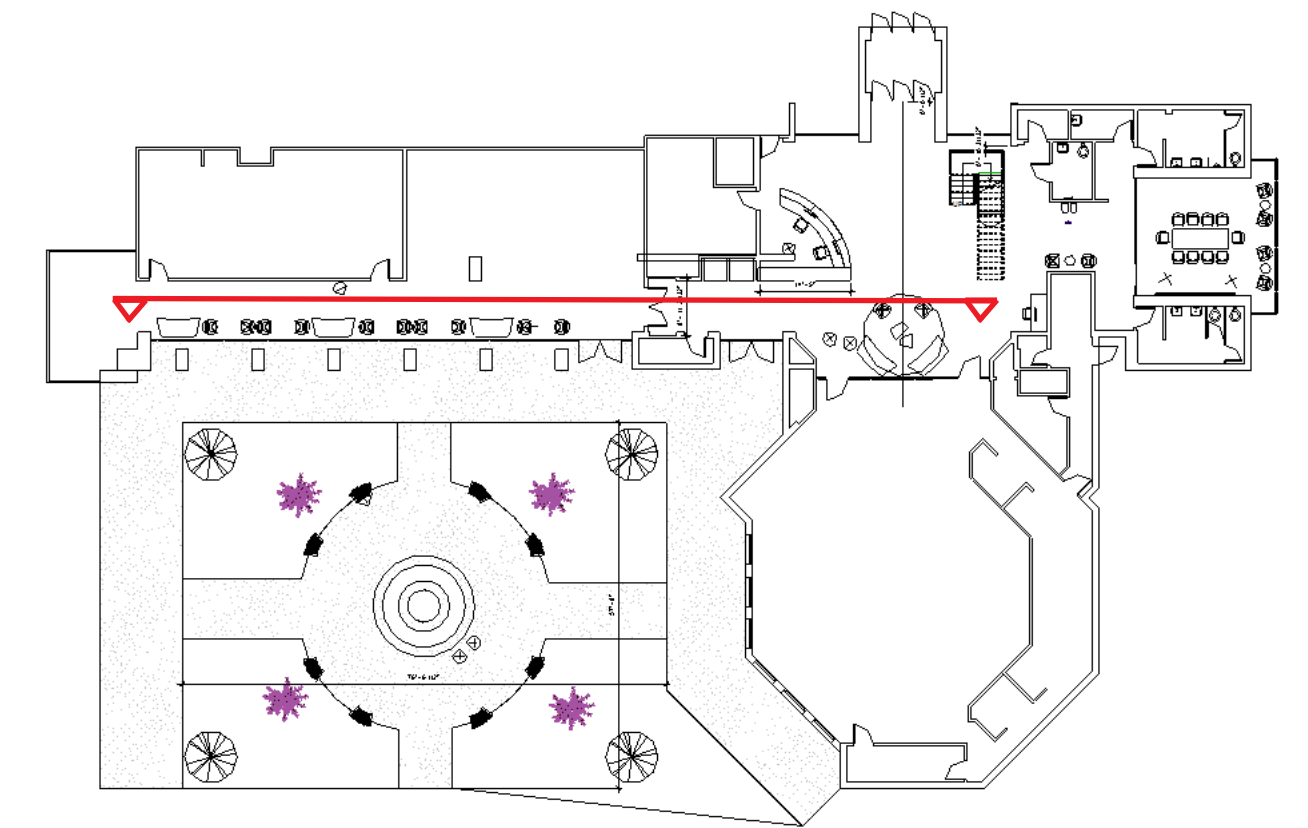
Art Gallery Perspective





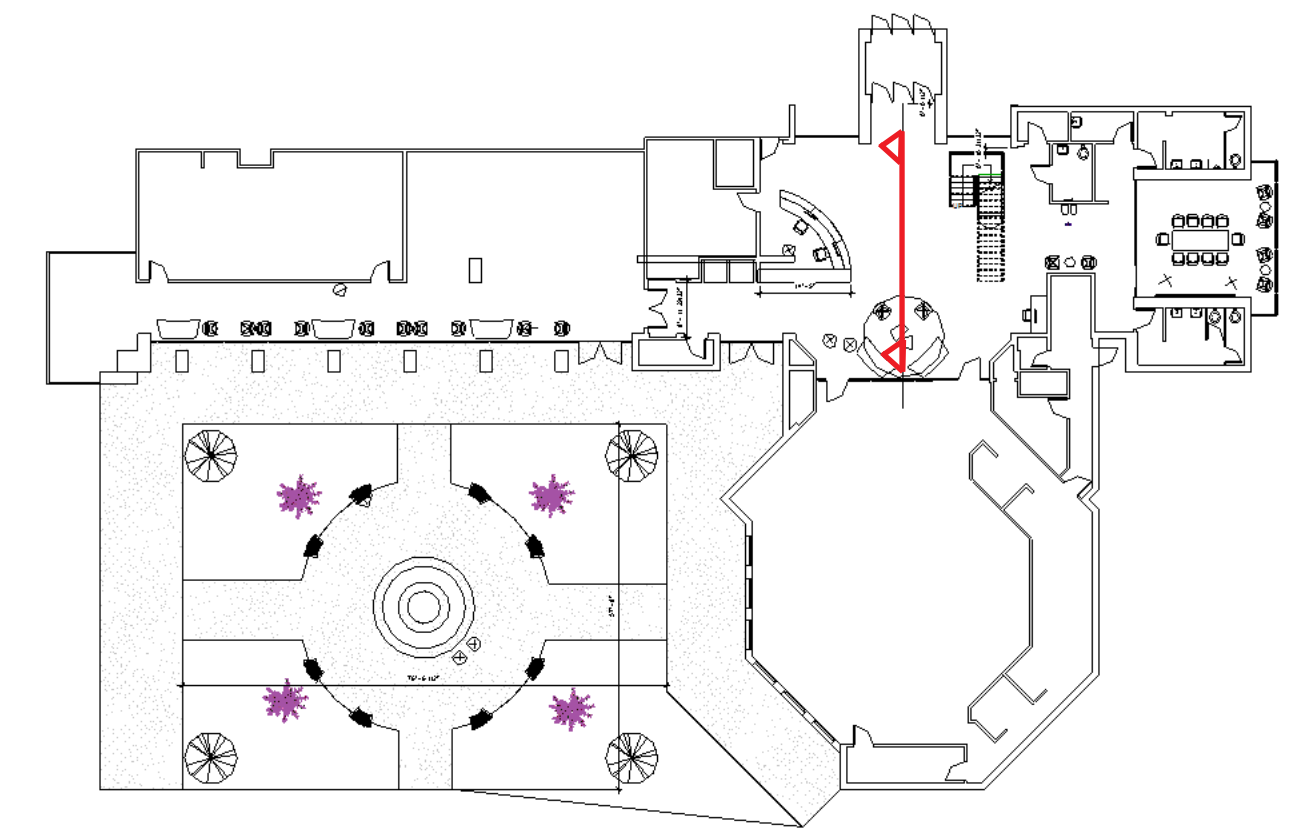
7 DMV Hallway Section

Scale: 1/4" = 1'-0"



8 Atrium Section

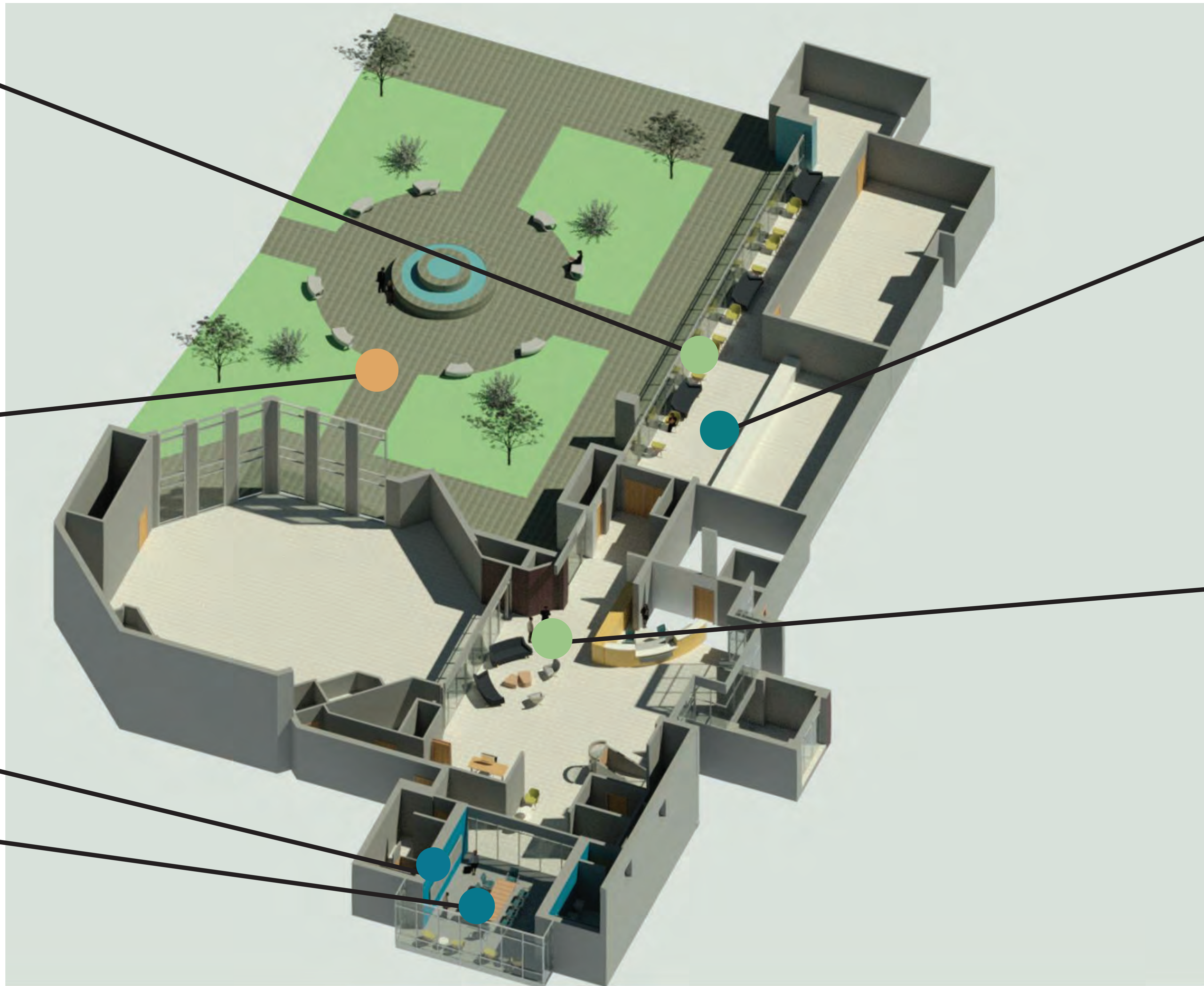
Scale: 1/4" = 1'-0"



RECYCLED TEXTILES
- Knoll Textiles Greenguard Certified

OUTDOOR SPACES
- Natural Light
- Quality Views

INDOOR AIR QUALITY
- Benjamin Moore Zero VOC Paint
- Wolf Gordon Green Shield Finish



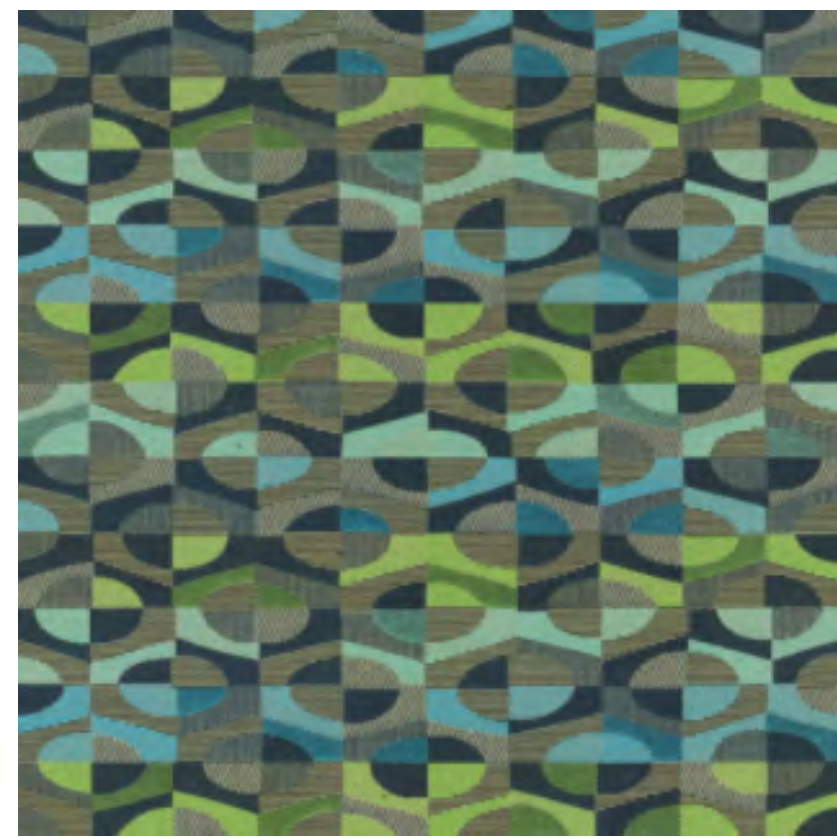
LOCAL PRODUCTS
- Tile from Ceramin Tile Works MN

ECO-FRIENDLY FURNITURE
- Flädie Möbler Sofa

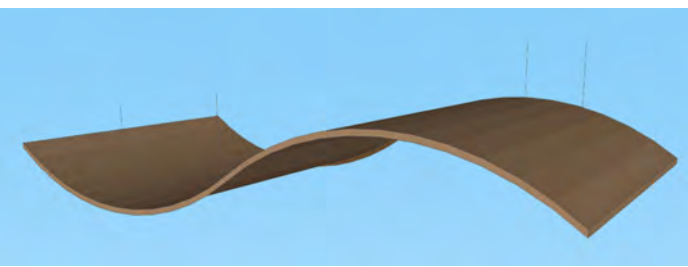
Brooklyn Park City Hall Redesign

LEED Standards

ATRIUM



Bistro in Pistachio
Knoll Textiles



Armstrong Ceilings



Kennedee Tables



Swavelle Leather

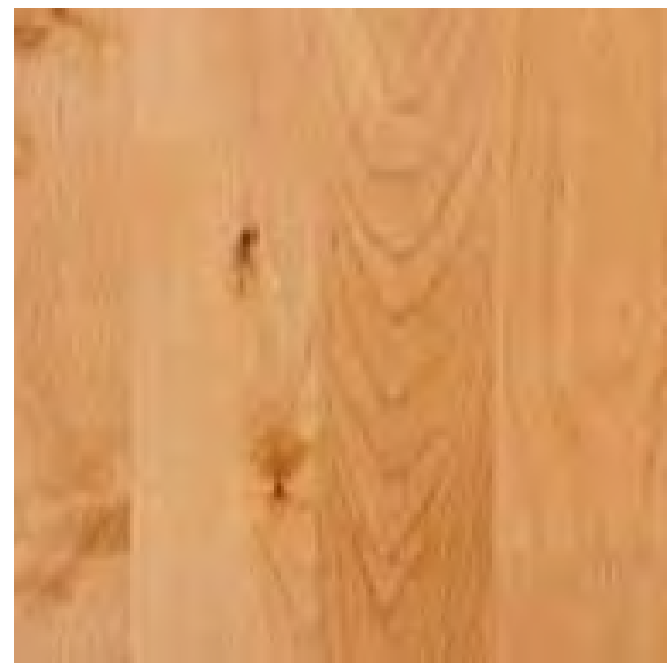


Fladie Sofa

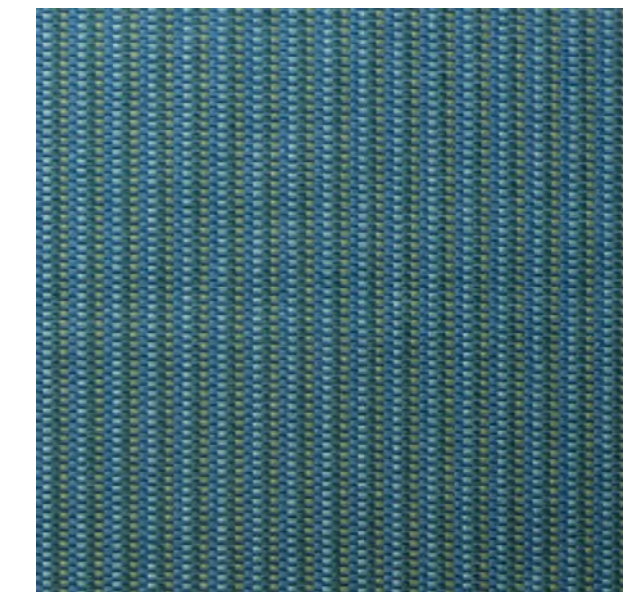
KAKATA CONFERENCE ROOM



Fladie Sofa



Birch Wood



Grand Central in Constellation - Wolf Gordon



Haworth X99 Chair



Benjamin Moore Paints Shade of Branding Blue



Gingko Armchair
Haworth US



Delite in Turquoise
Knoll Textiles



Hourglass in Spring
Knoll Textiles

DMV HALLWAY



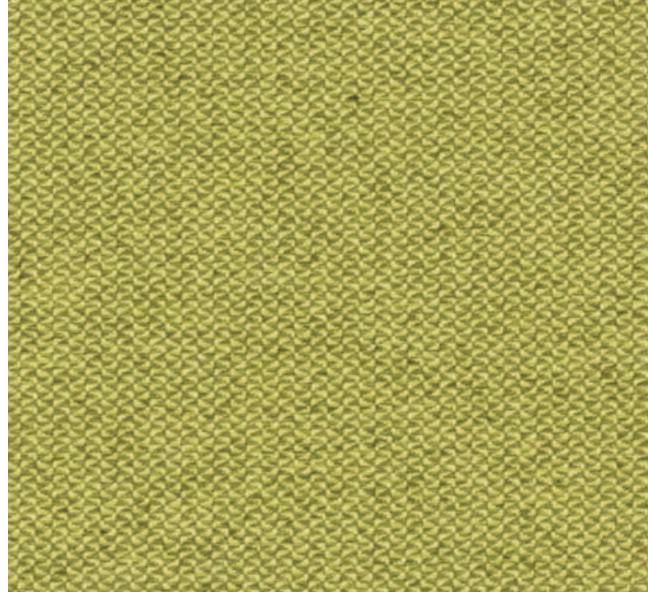
Fladie Sofa



Contessa Basque in Reef
Swavelle Hospitality



Theory in Kinetic
Knoll Textiles



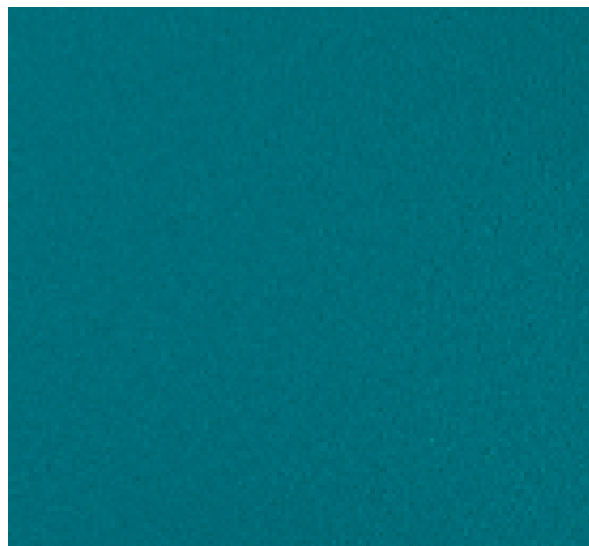
Hourglass in Spring
Knoll Textiles



Gingko Chair
Haworth US



Bayside in Pearl
Ceramic Tileworks



Benjamin Moore Paints Shade of Branding Blue



Benjamin Moore Paints Shade of Branding Green