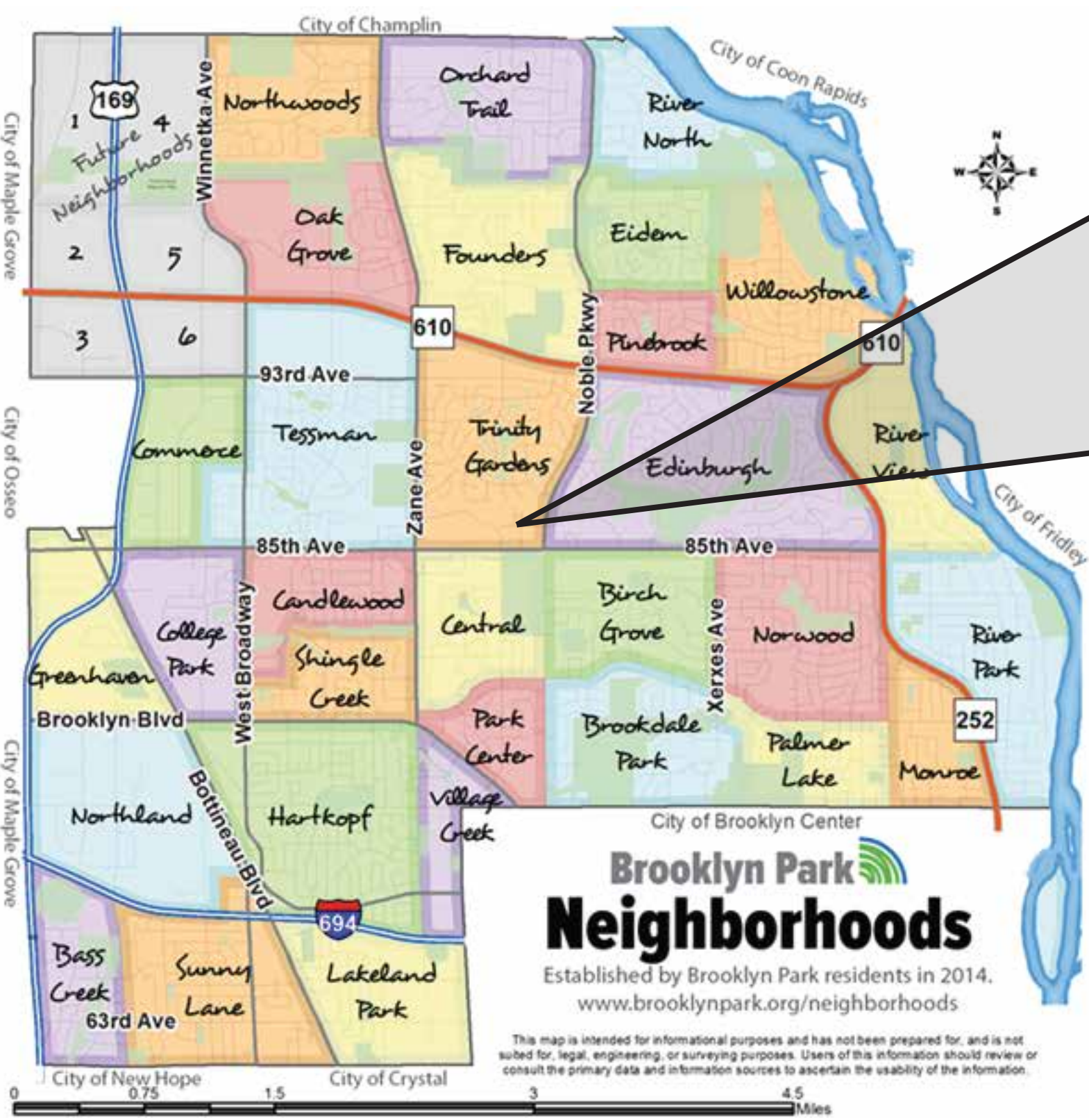
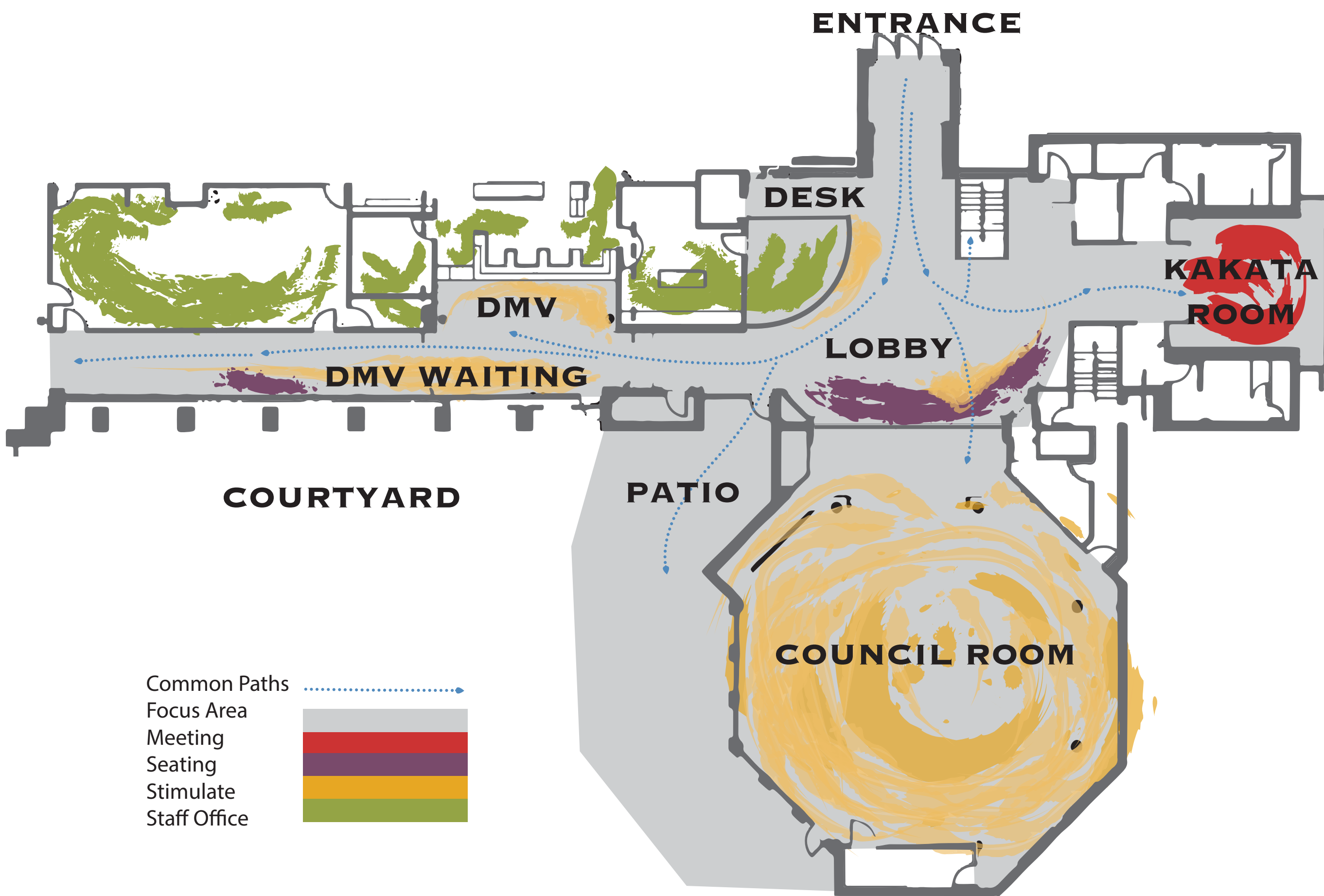


Brooklyn Park

Unique. United. Undiscovered.

Caitlin Carter, Abi Lundstrom, Emily Walther



- **Increase Branding**
Memorable space
Experience
- **Improve Usability**
Front desk
Way finding Increased seating
- **Connecting to Community**
Draw people in

Art Feature
Mosaic band composed of glass pieces in a band around the atrium below second level.

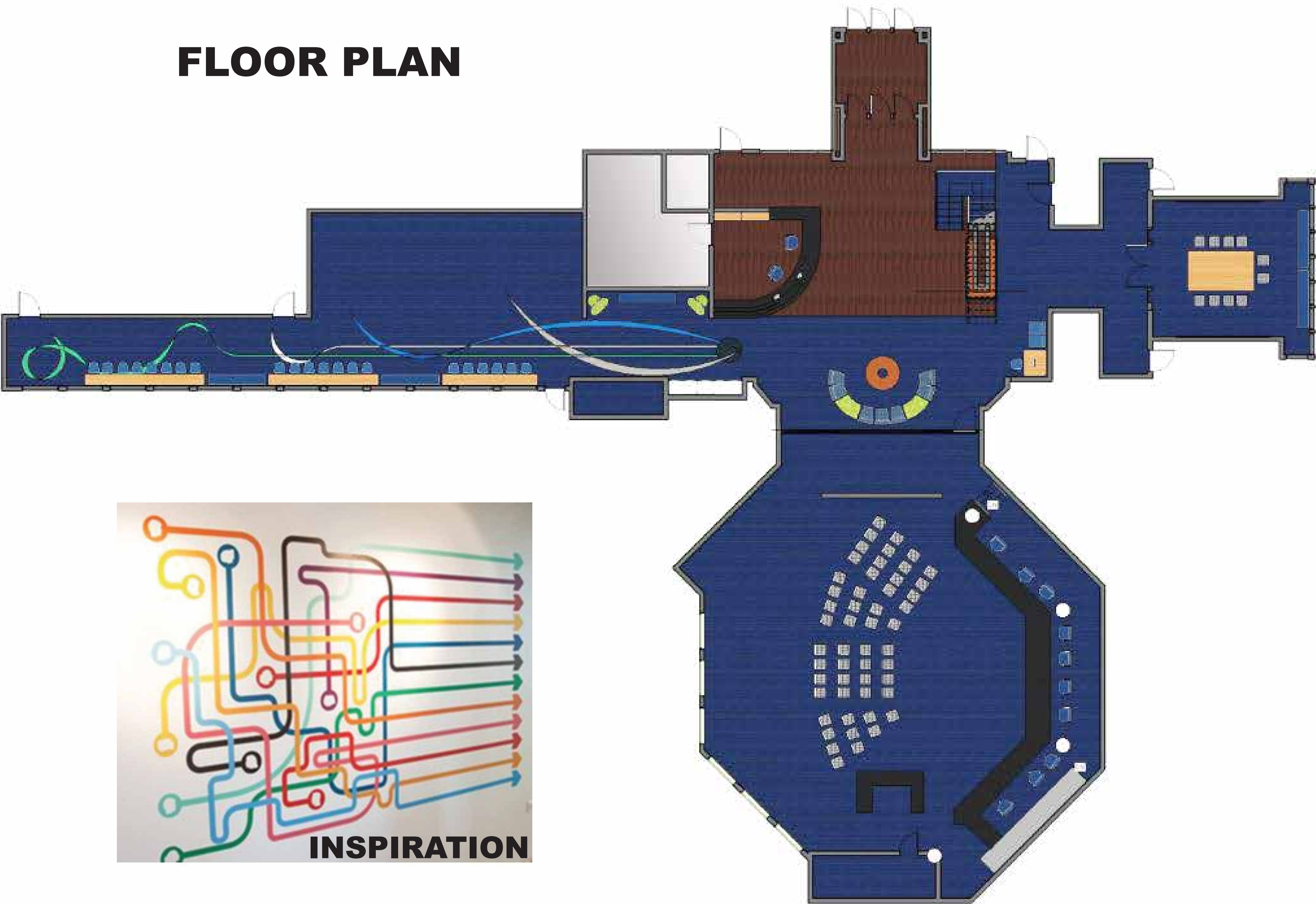


This project was completed as part of the course IDES 2604: Interior Design Studio IV at the University of Minnesota, with support from the Resilient Communities Project (RCP). RCP is a program of the Center for Urban and Regional Affairs (CURA). To learn more, visit rcp.umn.edu.

This project was completed under the supervision of Dr. Abi Asojo and Justine Pliska, as part of the 2016–2017 RCP–City of Brooklyn Park partnership. The Brooklyn Park project leads were Angelica Klebsch and Wokie Freeman. This poster was designed by Abi Lundstrom, Caitlin Carter, and Emily Walther.



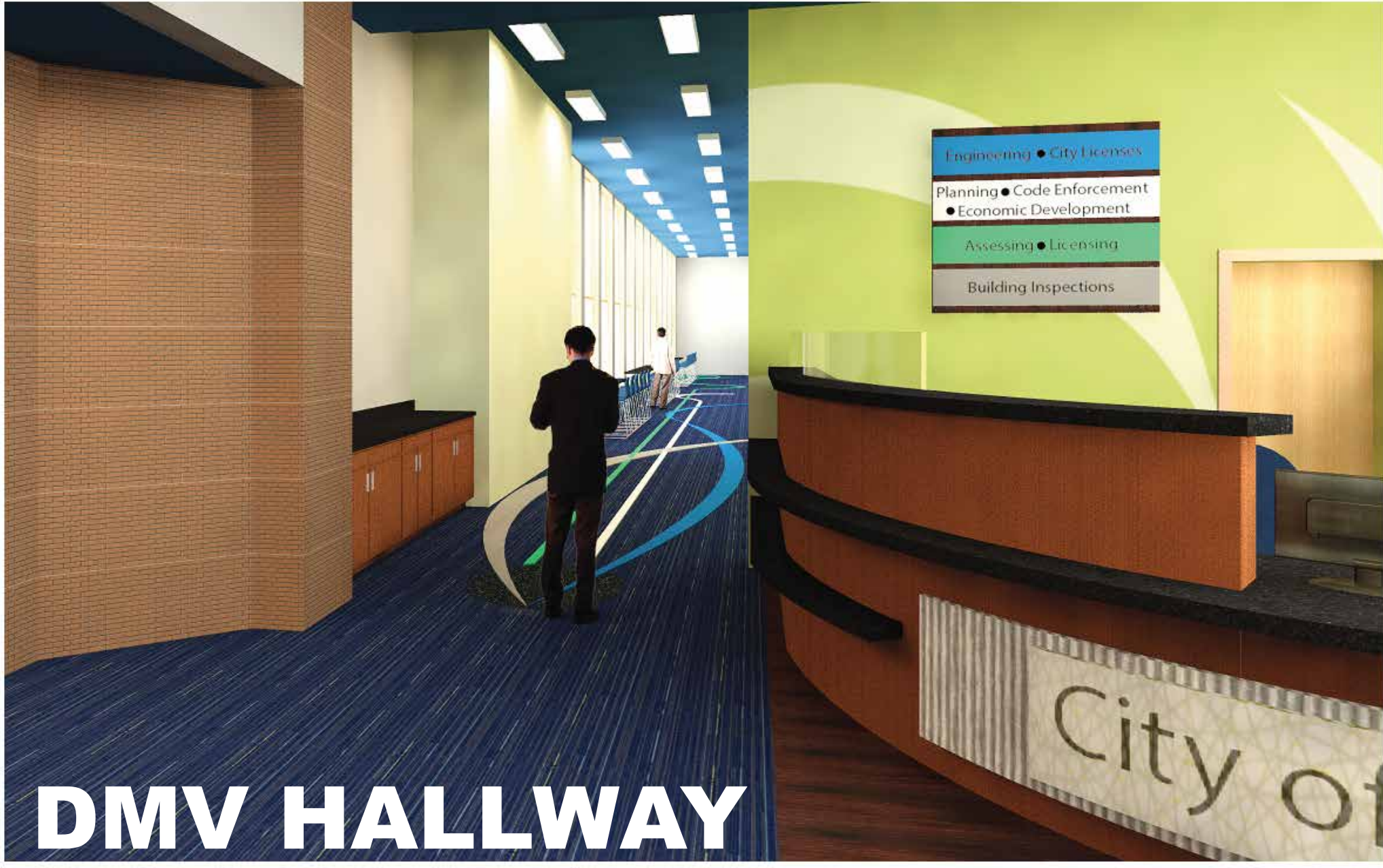
FLOOR PLAN



CONCEPT

Brooklyn Park's City Hall is a space that is meant to represent the community and showcase its new branding. The space emulates the unique, united, and undiscovered characteristics of the city by placing groups of seating around the lobby space to facilitate conversation among citizens while providing comfortable spaces to wait in line. A reimagined front desk, improved way finding, and simple changes to the Kakata meeting room will improve the overall usability of the space. Color is used to draw attention to specific locations while the sculptural light fixture draws attention to the existing atrium space.





DMV HALLWAY



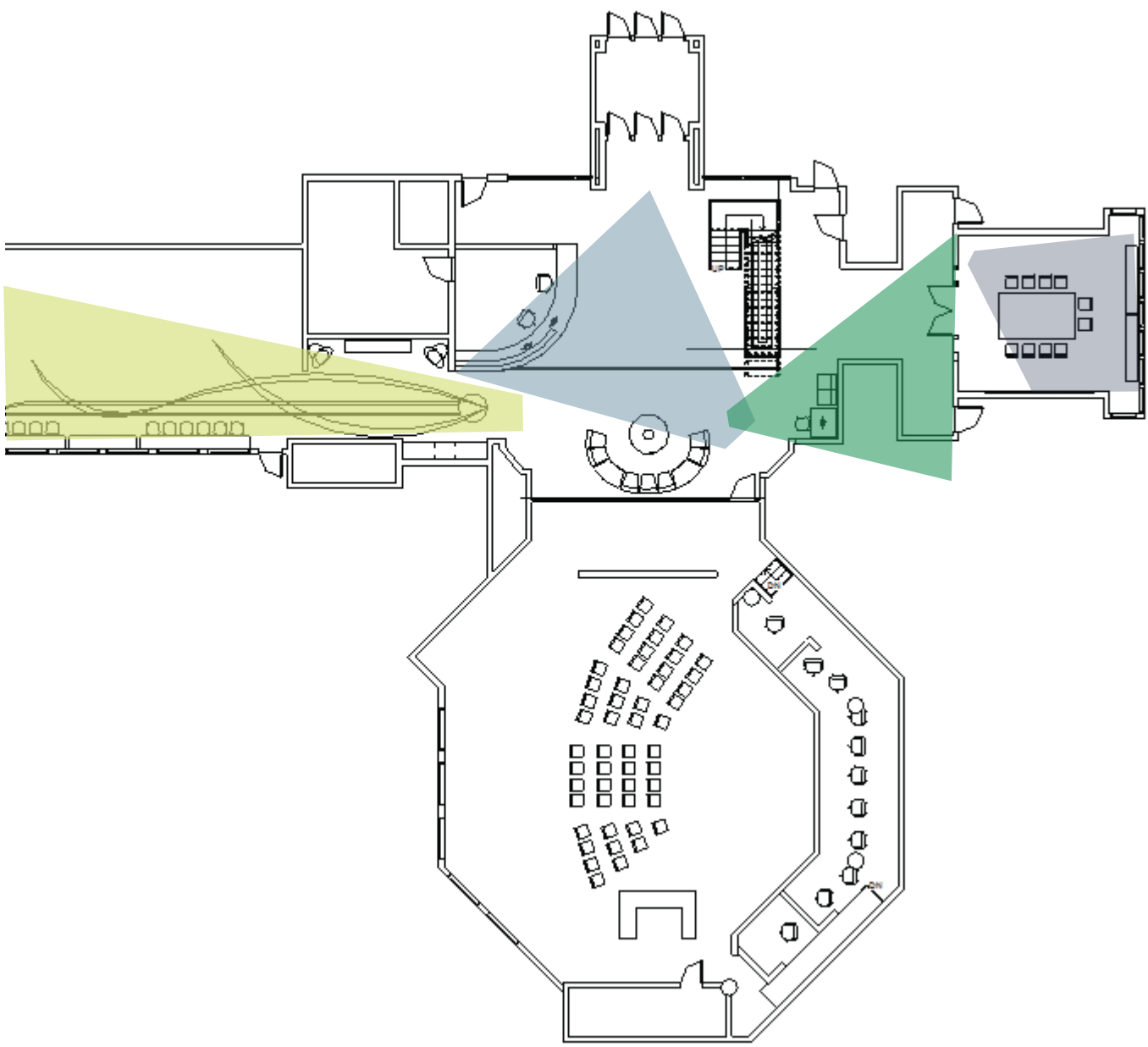
KAKATA CONFERENCE ROOM



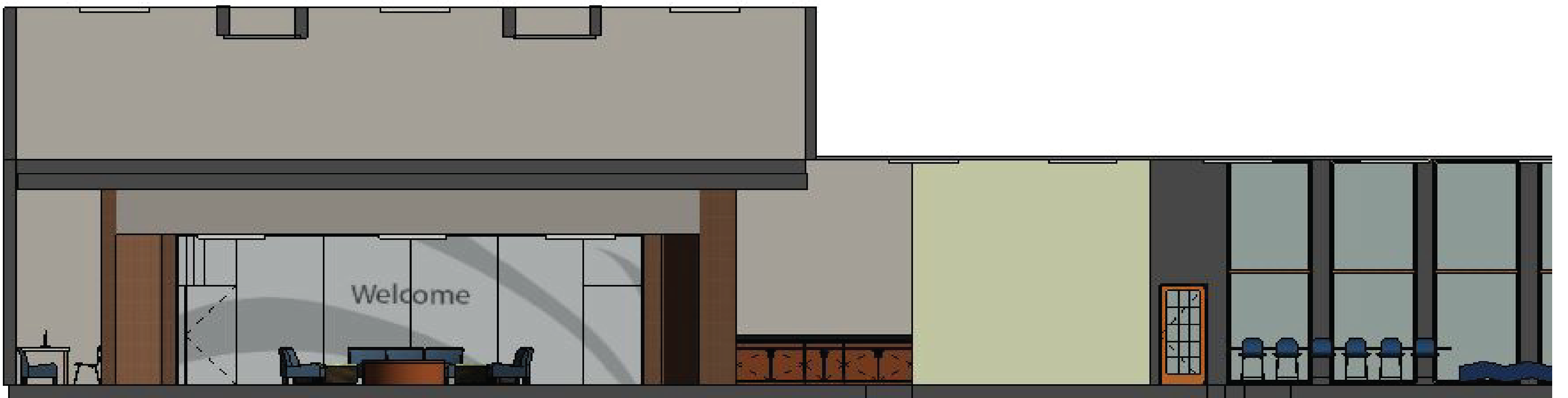
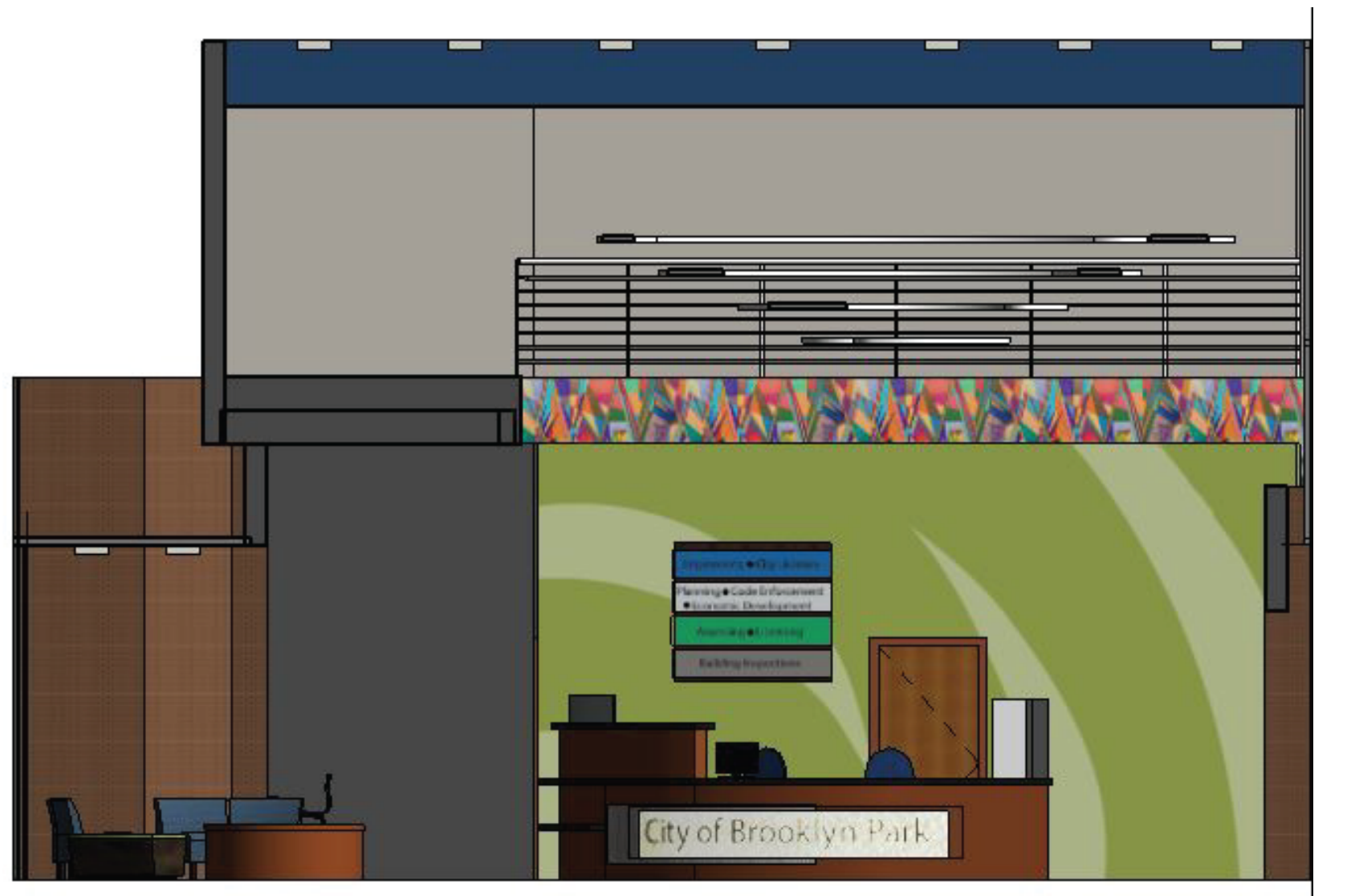
BENEATH STAIRS



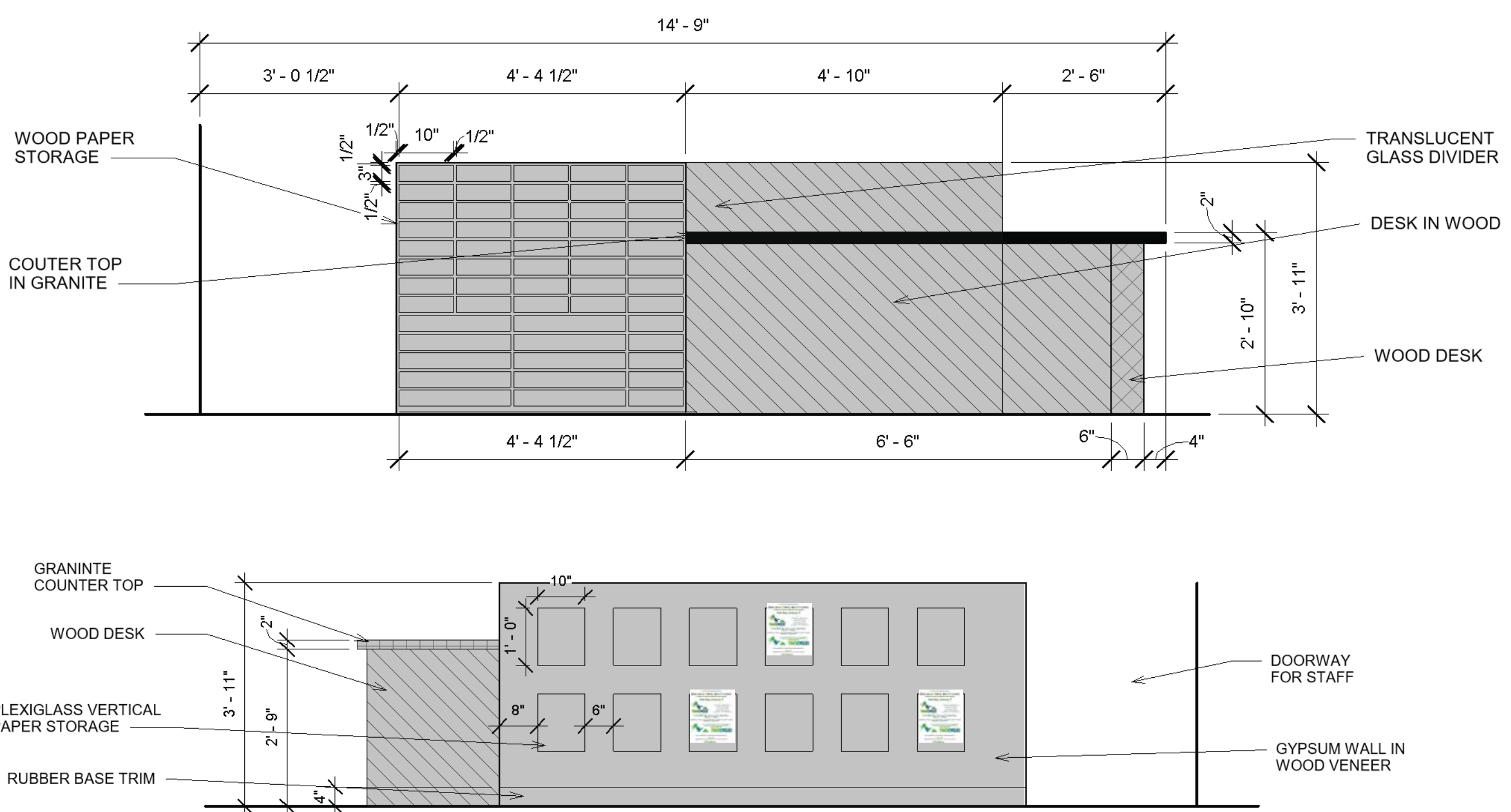
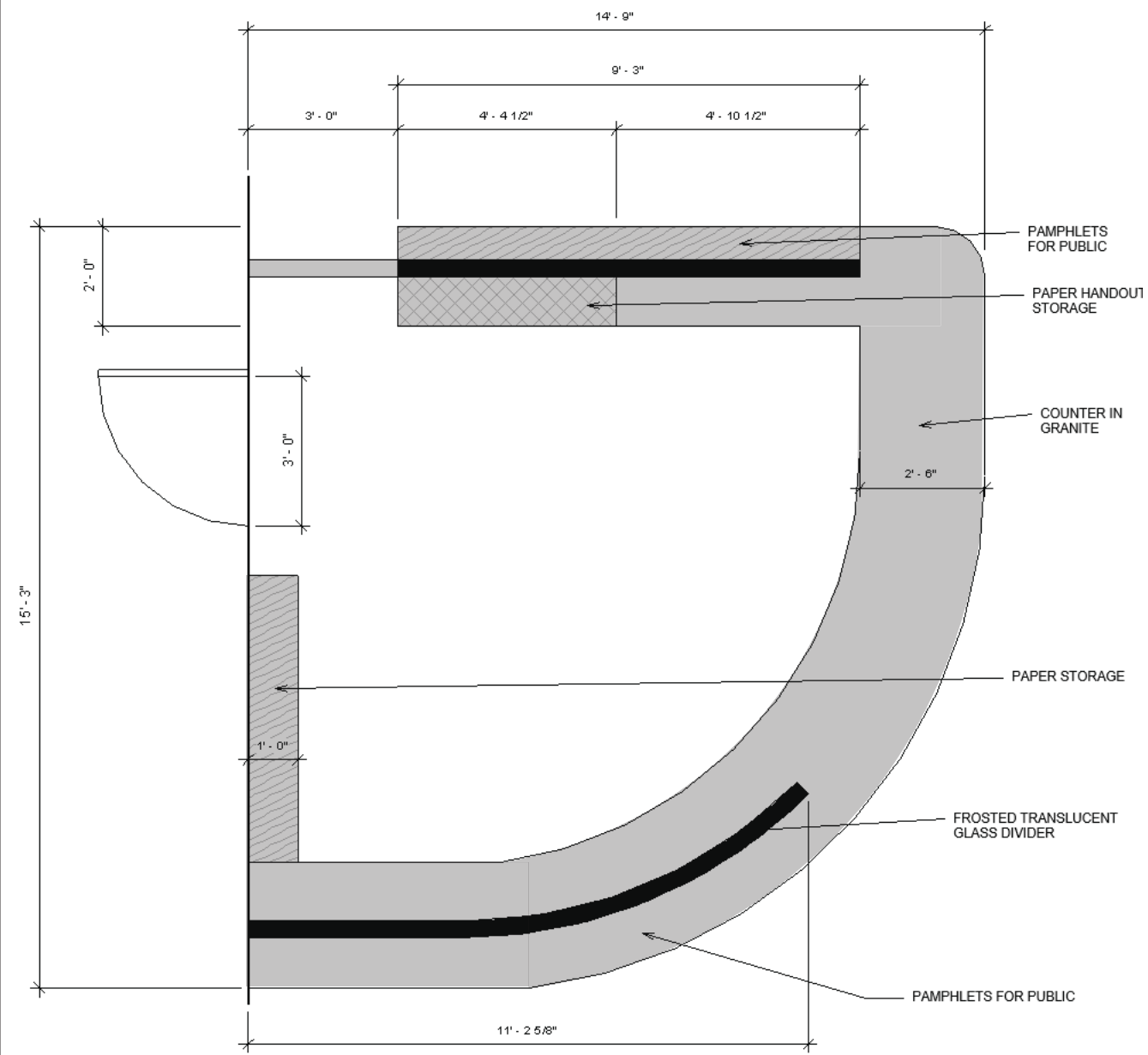
ATRIUM



**ELEVATION PLAN EAST WALL
 1/4" = 1'**

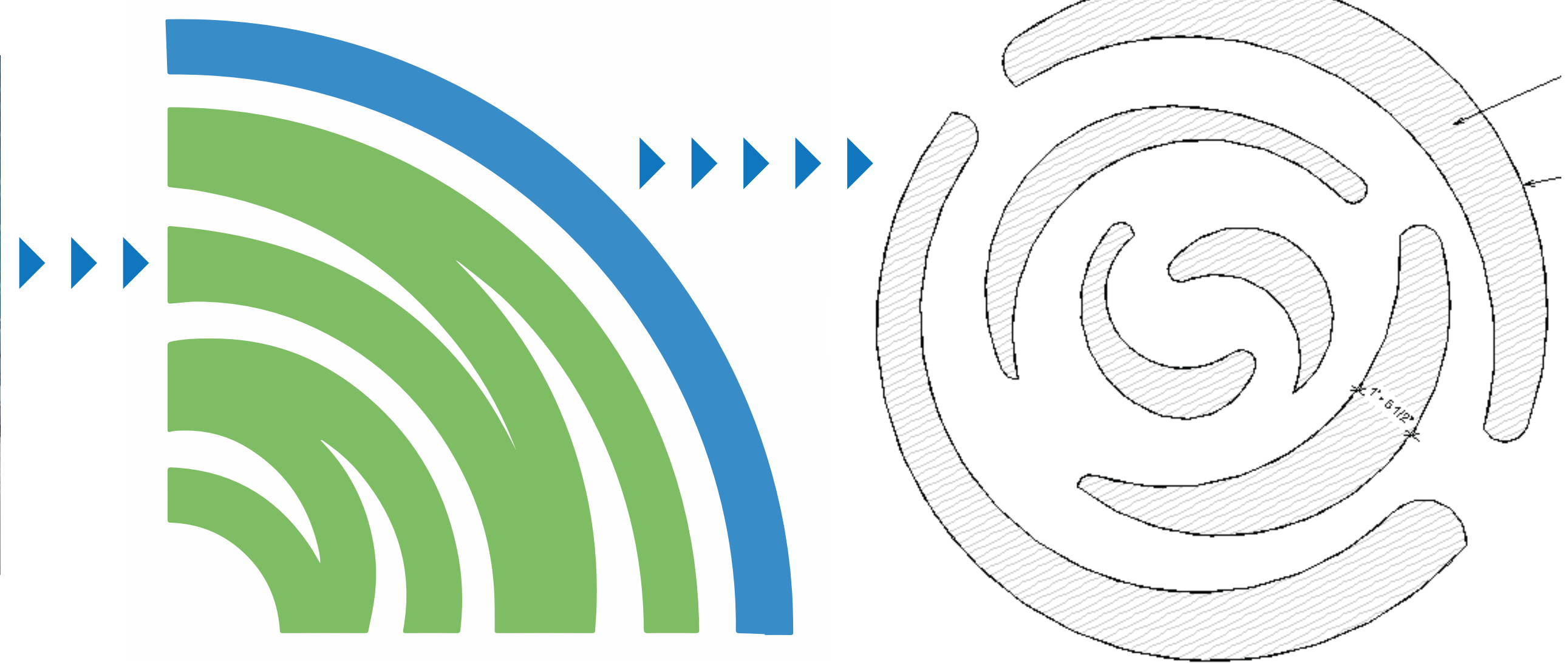


ELEVATION PLAN NORTH WALL 1/4" = 1'-0"



DESK DETAIL

CEILING DETAIL



LEED Standards

