

Assessing Food Access in Brooklyn Park Grocery Stores

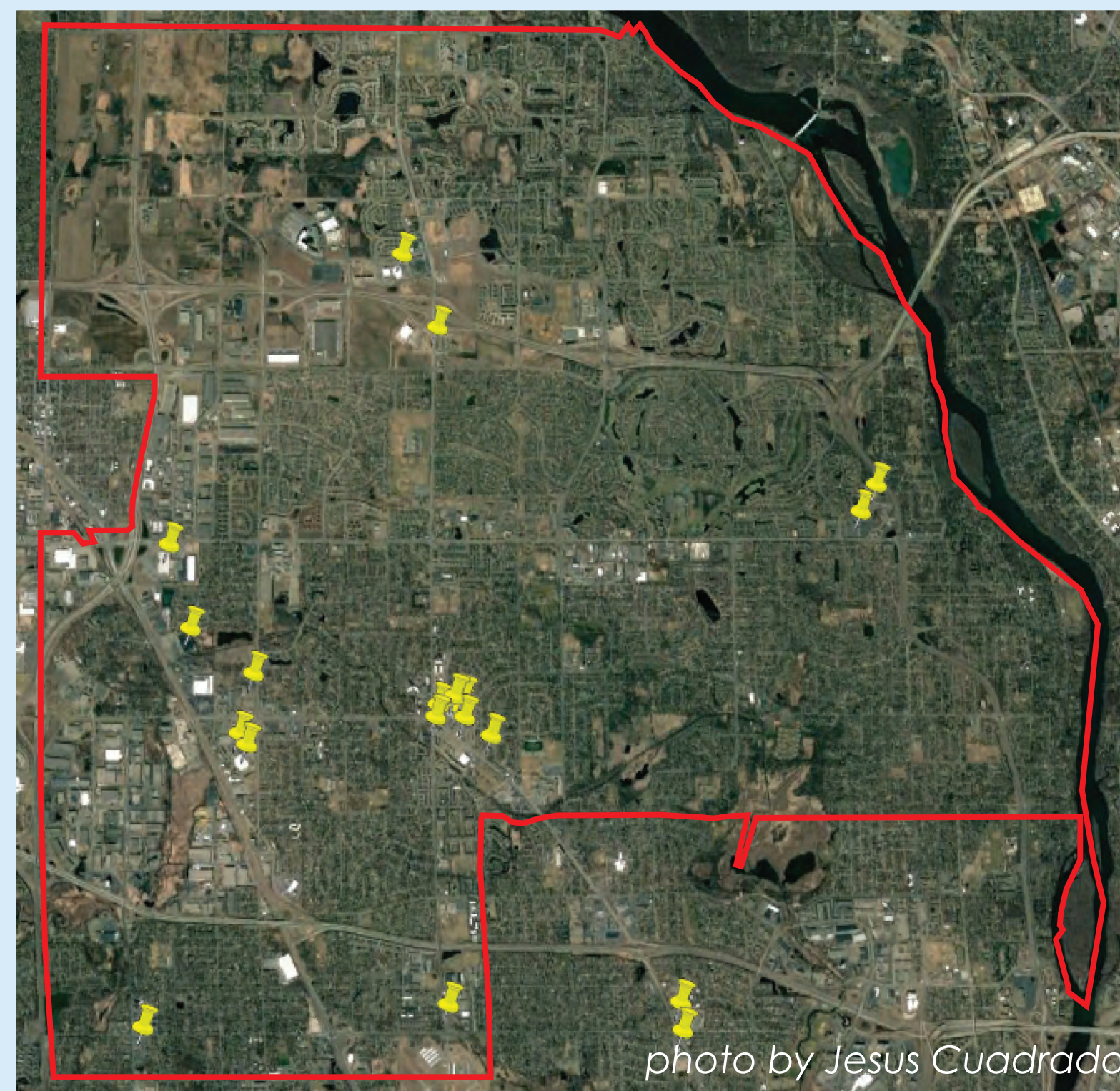
By Jesus Cuadrado, Kate Kuehl, and Rachel Wood

Background

Brooklyn Park is the sixth largest city in Minnesota with a population of 77,000.

The city has a diversity of cultures which have changed significantly in the last two decades. Currently, Brooklyn Park has the largest population of Liberians outside of Liberia.

Areas of Brooklyn Park have been designated as food deserts.



Map of Selected Grocery Stores

Why it Matters

Access to food that is affordable, healthy, accessible, and culturally appropriate is needed to sustain a healthy and vibrant population. With a large change in diversity, there should be change in the offerings in the community.

As a community, we should all be concerned with inequality and injustice. Topics such as food deserts fall into that category. This research matters because it can lead us to discover problems and solutions in the community of Brooklyn Park. Some issues are not always clear, which is why we collect data and analyze it to find trends.

Methods

1. Researched history, culture, and resident food access issues in Brooklyn Park
2. Created a store casing template and selected 24 grocery stores to assess based on research with the help of project lead
3. Used grocery store casing template to gather price and store attribute data, casing approximately 5 stores per week on weekend afternoons

Time -
Store Number -
Exterior 1 2 3 4 5
Interior 1 2 3 4 5
Produce 1 2 3 4 5
\$ yellow onions -
\$ tomatoes -
\$ apples -
\$ milk -
\$ eggs -
\$ flour -
\$ white rice -

Deli 1 2 3 4 5
Selection:
\$ beef -
\$ chicken -
\$ pork -
International 1 2 3 4 5
Regions:
register open -
customers -
Notes:

Grocery Store Casing Template

Results

Out of 24 stores selected, 19 were successfully cased.

Type, Amount	Tomatoes	Yellow Onions	Apples	Milk	Eggs	Flour	White Rice	Chicken	Pork	Ground Beef
	Price per Pound	Price per Pound	Price per Pound	Price per Gallon	Price per Dozen	Price per 5 Pounds	Price per 5 Pounds	Price per Pound	Price per Pound	Price per Pound
Small Conventional, 6	1.76	0.67	1.26	3.17	1.3	2.68	3.91	2.34	3.66	2.92
Large Conventional, 6	1.46	1.04	1.5	2.84	1.41	2.08	3.8	1.44	3.57	3.61
Small International, 5	1.44	0.79	1.49	4.59	2.32	6.97	5.99	-	-	3.33
Large International, 2	1.14	0.84	0.99	3.99	0.92	3.14	4.74	0.89	1.5	0.99

Average Price by Store Classification

Type, Amount	Exterior	Interior	Produce	Deli	Int'l Section	Registers Open	Customers
Small Conventional, 6	2.8	3.2	2.8	3.0	1.3	1.5	11.5
Large Conventional, 6	3.7	4.0	4.0	4.0	2.4	11.8	83.3
Small International, 5	2.6	2.2	1.8	1.8	4.2	1.4	12.8
Large International, 2	4.0	3.0	3.5	1.5	5.0	6.0	87.5

Average Rating by Store Classification



Large International Grocery Store

- **Small Conventional stores** fell in the middle in most categories.

- **Large Conventional stores** had the highest rating for Interior, Deli, and Produce and the lowest prices for Milk, Flour, and Rice.

- **Small International stores** had the lowest rating for Interior, Exterior, and Produce and the highest prices for Milk, Eggs, Flour, and White Rice.

- **Large International stores** had the lowest rating for Deli, the most customers, and the lowest prices for Eggs and most produce and meat products.

During the grocery store casing process, a number of food access issues became apparent:

- Small international grocery stores had difficulty sourcing a variety of traditional ingredients.
- Large international grocery stores had the lowest prices and best variety overall but the lowest quality of products.
- The majority of grocery stores were concentrated in the southwest corner of Brooklyn Park with the rest scattered throughout the remainder.

Reflection

We recommend Brooklyn Park share the information with grocery stores and start a dialogue. Resources should be allocated to small international stores so they can better compete and provide to the community. Zoning could be changed to accommodate new stores in areas lacking.



Fufu, a popular African dish

This project was completed as part of FDSY4101: Holistic Approaches to Improving Food Systems Sustainability Course, a course at the University of Minnesota offered in Spring 2017, with support from the Resilient Communities Project (RCP). RCP is a program of the Center for Urban and Regional Affairs (CURA). To learn more, visit rcp.umn.edu.

Project completed by: Jesus Cuadrado, Kate Kuehl, and Rachel Wood
Poster designed by: Jesus Cuadrado and Rachel Wood
Course instructor: Julie Grossman
Project lead: John Nerge

For more information about this project or to view the complete report, please visit rcp.umn.edu.