

ED Dec. 1-30, 1944

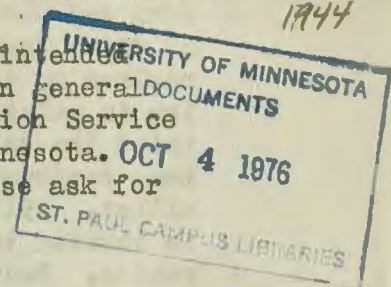
AGRICULTURAL EXTENSION SERVICE
UNIVERSITY OF MINNESOTA - U. S. DEPARTMENT OF AGRICULTURE
UNIVERSITY FARM ST. PAUL 8 MINNESOTA

Office of
Publications

EXTENSION DIGEST

January 2, 1944 1945
For period
December 1-December 30
1944

This digest of selected press and radio releases is intended primarily to keep editors and professional workers in general touch with the activities of the Agricultural Extension Service and the Department of Agriculture, University of Minnesota. For detailed information on topics referred to, please ask for copy of original release.



* * * * *

DECEMBER 5 - SEED DIRECTORY LISTS GROWERS OF RECOMMENDED VARIETIES - Release of the 1944 fall seed directory was announced today by the Minnesota Crop Improvement Association. The directory includes names of seed growers in the state whose fields passed the official Crop Improvement association inspection during the summer, and names of growers having supplies of recommended varieties of all the major grain, forage and canning crops grown in Minnesota. Seed sources of 44 Minnesota and Wisconsin Experiment Station hybrid corn varieties are listed, a number of commercial hybrid corn varieties grown for certification, oats, barley, rye, flax, wheat, soybeans, alfalfa and other crops. Of special interest this year is a list of growers who have supplies of the new spring wheat variety Newthatch. A copy of the seed directory may be obtained by writing to the Minnesota Crop Improvement Association, University Farm, St. Paul 8, Minnesota.

* * * * *

- DECEMBER 5 - 4-H BOYS GIVEN TRACTOR MAINTENANCE SHORT COURSE
- DECEMBER 5 - FARM IMPROVEMENT GROUPS TO HOLD MEETINGS FARM AND HOME WEEK
- DECEMBER 5 - W.E. MORRIS NAMED ON NATIONAL COMMITTEE OF U. LIVESTOCK SPECIALISTS
- DECEMBER 8 - GOOD RED RIVER VALLEY POTATOES AVAILABLE DESPITE STORAGE LOSSES
- DECEMBER 8 - FARM DRAINAGE PROBLEMS TO BE WORKED OUT IN FARM & HOME WEEK SESSIONS
- DECEMBER 12 - P. E. MILLER SPEAKS TO INDIANA EXTENSION STAFF
- DECEMBER 12 - LEIGH HARDEN AWARDED LITTLE RED OIL CAN
- DECEMBER 12 - GEORGE GRIM TO SPEAK ON "CHINA FROM THE INSIDE"
- DECEMBER 12 - FAVORABLE OUTLOOK FOR DAIRYMEN IN 1945, SAYS DANKERS

* * * * *

DECEMBER 12 - FOREHANDED FARMERS WILL TREAT SEED THIS WINTER - Farmers who want to get the jump on jobs that pile up in the spring seeding season can start their seed treating any time now, says R. C. Rose, extension plant pathologist at University Farm. Treating the seed in advance of the planting season has no harmful effect on germinating ability. The treatment will be as effective as if done just before seeding. Both safety and effectiveness are insured if the treated seed is stored under cool, dry conditions. All treated seed should be carefully labeled to avoid the possibility of its being used in livestock feeding, since the material used in treating seed is poisonous to animals. Early treating of seeds calls for equally early cleaning of seed. Samples of cleaned seed may be sent to the State Seed Testing Laboratory at University Farm, St. Paul 8, for free analysis and germination tests.

DECEMBER 12 - PROSO MILLET AND BUCKWHEAT IN LIVESTOCK RATIONS - How to make the best use of buckwheat and proso millet continues to be a frequent question directed to University Farm livestock specialists. From the standpoint of nutritive value, (over)

Cooperative Extension Work in Agriculture and Home Economics, University of Minnesota, Agricultural Extension Service and U. S. Department of Agriculture Cooperating Paul E. Miller, Director. Published in furtherance of Agricultural Extension Acts c May 8 and June 30, 1914.



millet ranks approximately midway between oats and corn. It has less protein than oats but more than corn, and less total nutrients than corn, but more than oats. Buckwheat, though almost equal to millet in protein content, is much higher in fiber content and thus is a less concentrated feed than other common grains. Pound for pound, buckwheat has only about 76 per cent of the nutritive value of No. 2 corn and about 88 per cent the value of oats. J. B. Fitch, chief of the division of dairy husbandry at University Farm, suggests that ground millet might be used to replace up to half the grain used in the ration for dairy cows. Since buckwheat is low in palatability, its use in dairy rations should be limited to less than one-third the total grain mixture. For hogs, H. G. Zavoral, extension animal husbandman, recommends that not over one-third of the fattening feeds be replaced by millet. Millet must be ground when used in hog rations. Use of buckwheat should be limited to rations for older hogs and should not exceed 20 per cent of the ration. Best use for buckwheat is for poultry, cattle and sheep.

* * * * *

DECEMBER 13 - SELECT MEAT CAREFULLY FOR MAKING SAUSAGE
 DECEMBER 14 - FARMERS MUST DO CAREFUL FINANCIAL PLANNING FOR POSTWAR PERIOD
 DECEMBER 14 - GEHANT, WEISER HONORED BY NATIONAL COUNTY AGENTS' ASSOCIATION
 DECEMBER 14 - HOMEMAKING PROGRAMS IMPORTANT FEATURE OF FARM, HOME WEEK
 DECEMBER 14 - CONFERENCE HELD FOR AGRICULTURAL EXTENSION SERVICE STAFF

* * * * *

DECEMBER 27 - 4-H RADIO PUBLIC SPEAKING CONTEST ANNOUNCED - "Why I Believe Education for Peaceful Living Is Necessary" will be the topic for the third annual state-wide 4-H and rural youth radio public speaking contest, A. J. Kittleson, state 4-H leader, announced today. The contest, sponsored by the Minnesota Agricultural Extension Service in cooperation with the Minnesota Jewish Council, is open to all 4-H and rural youth members 14 to 25 years of age. County champions must be selected by February 18 and district contests completed by March 4. The state contest will be held March 10.

DECEMBER 27 - DENNIS M. RYAN NEW EXTENSION AGRICULTURAL ENGINEER - New extension agricultural engineer and assistant professor in the agricultural engineering division at University Farm is Dennis M. Ryan, who succeeds Norton Ives, now at Iowa State college. For the past seven years Ryan has been agricultural engineer for the Portland Cement association, with headquarters in Minneapolis. Previous to that time he was agricultural engineer with the Soil Conservation Service. He has his Bachelor of Civil Engineering degree from the University of Minnesota. A native Minnesota, Ryan was reared on a farm in Blue Earth county.

* * * * *

DECEMBER 27 - FARIBAUT COUNTY BOY WINNER OF 4-H CONSERVATION CAMP STORY CONTEST
 DECEMBER 27 - CROP IMPROVEMENT DAY JANUARY 18; LIVESTOCK DAY JANUARY 19
 DECEMBER 27 - WHEY GOOD PROTEIN SUPPLEMENT IN HOG RATIONS, SAYS ZAVORAL

* * * * *

DATES TO REMEMBER

Farm and Home Week - January 16, 17, 18, 19

RECENT PUBLICATIONS

Copies available on request from county extension office
 or from Bulletin Room, University Farm, St. Paul 8.

PROGRESS IN DEVELOPMENT OF A LAND AND TIMBER MANAGEMENT PROGRAM IN NORTHEASTERN MINNESOTA by A. D. Wilson. One of a series of Station bulletins to be prepared on postwar agriculture. 46 pages. A study of land and timber management problems and possibilities in northeastern Minnesota. Discussion of zoning as the key to land use control.