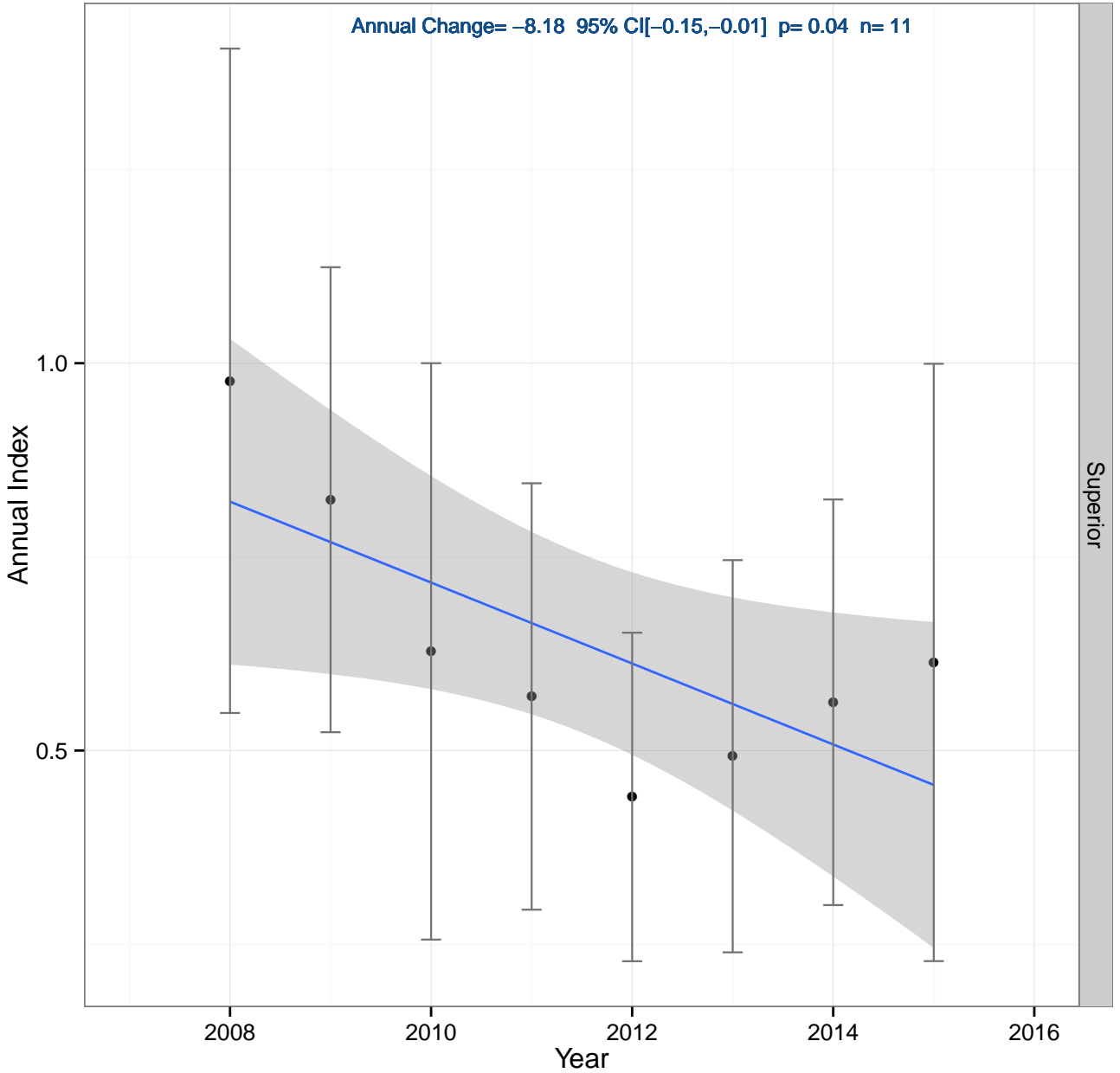


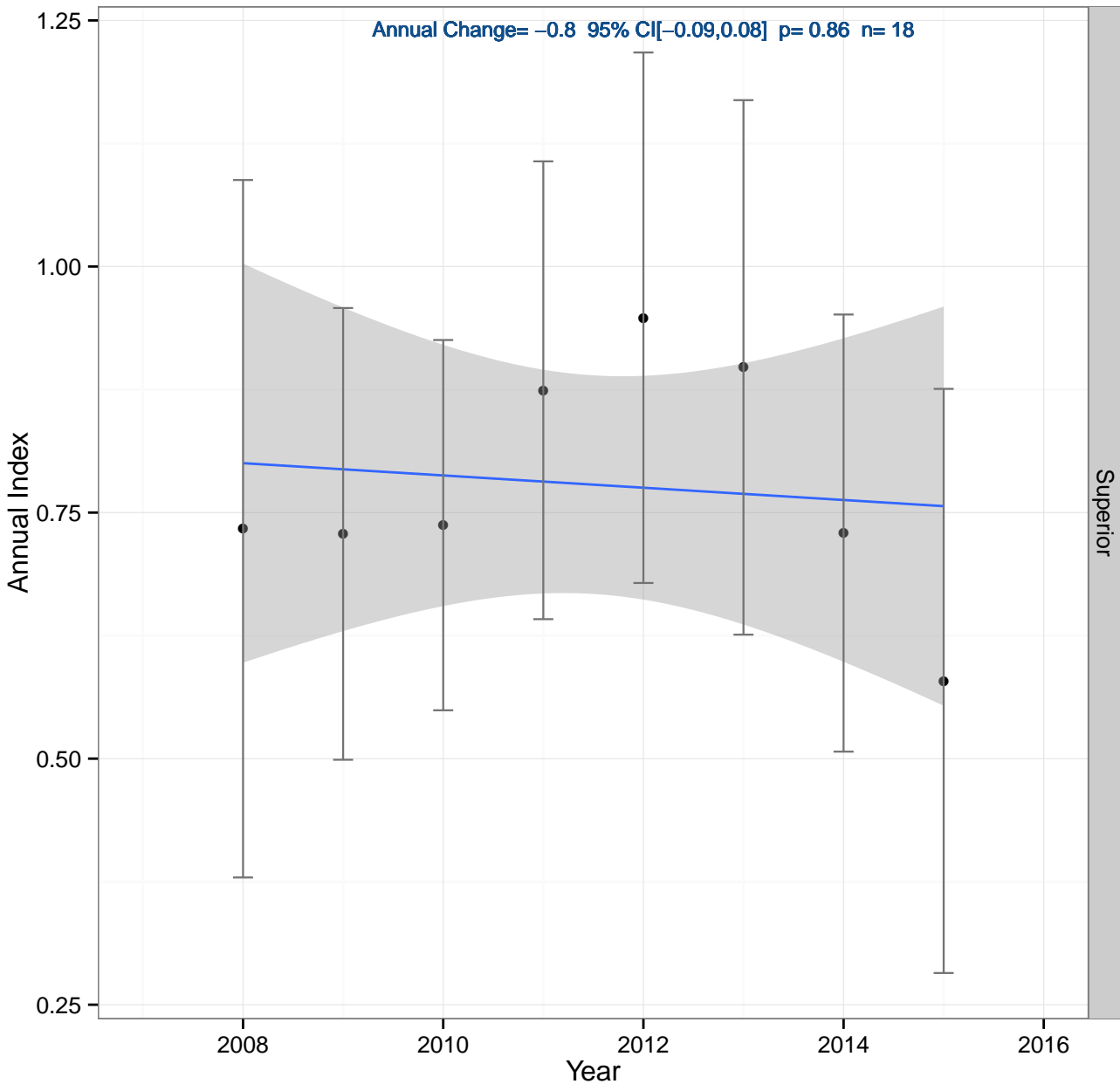
Blue-headed Vireo

Annual Change = -8.18 95% CI [-0.15, -0.01] p = 0.04 n = 11



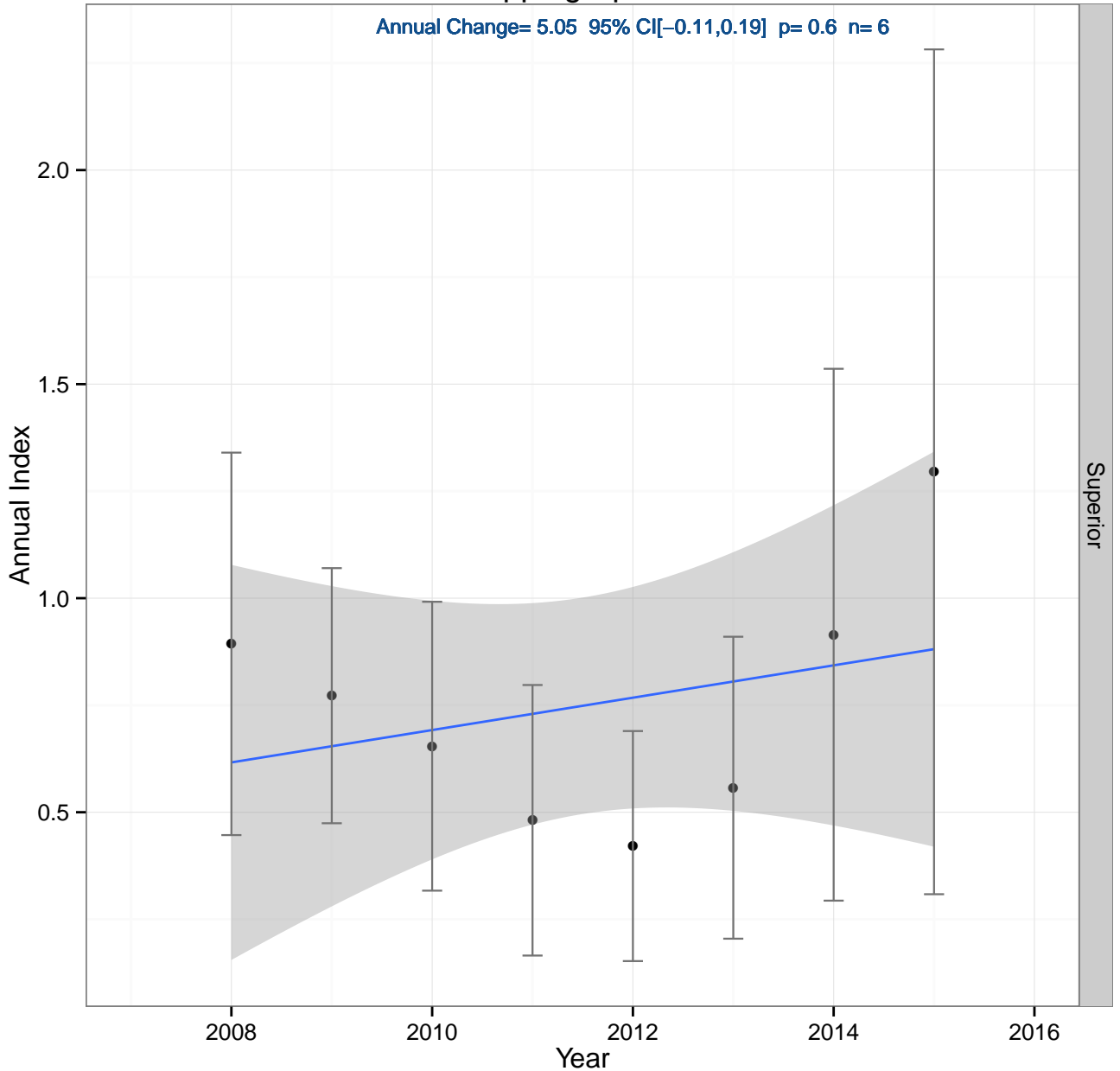
Blackburnian Warbler

Annual Change = -0.8 95% CI $[-0.09, 0.08]$ $p = 0.86$ $n = 18$



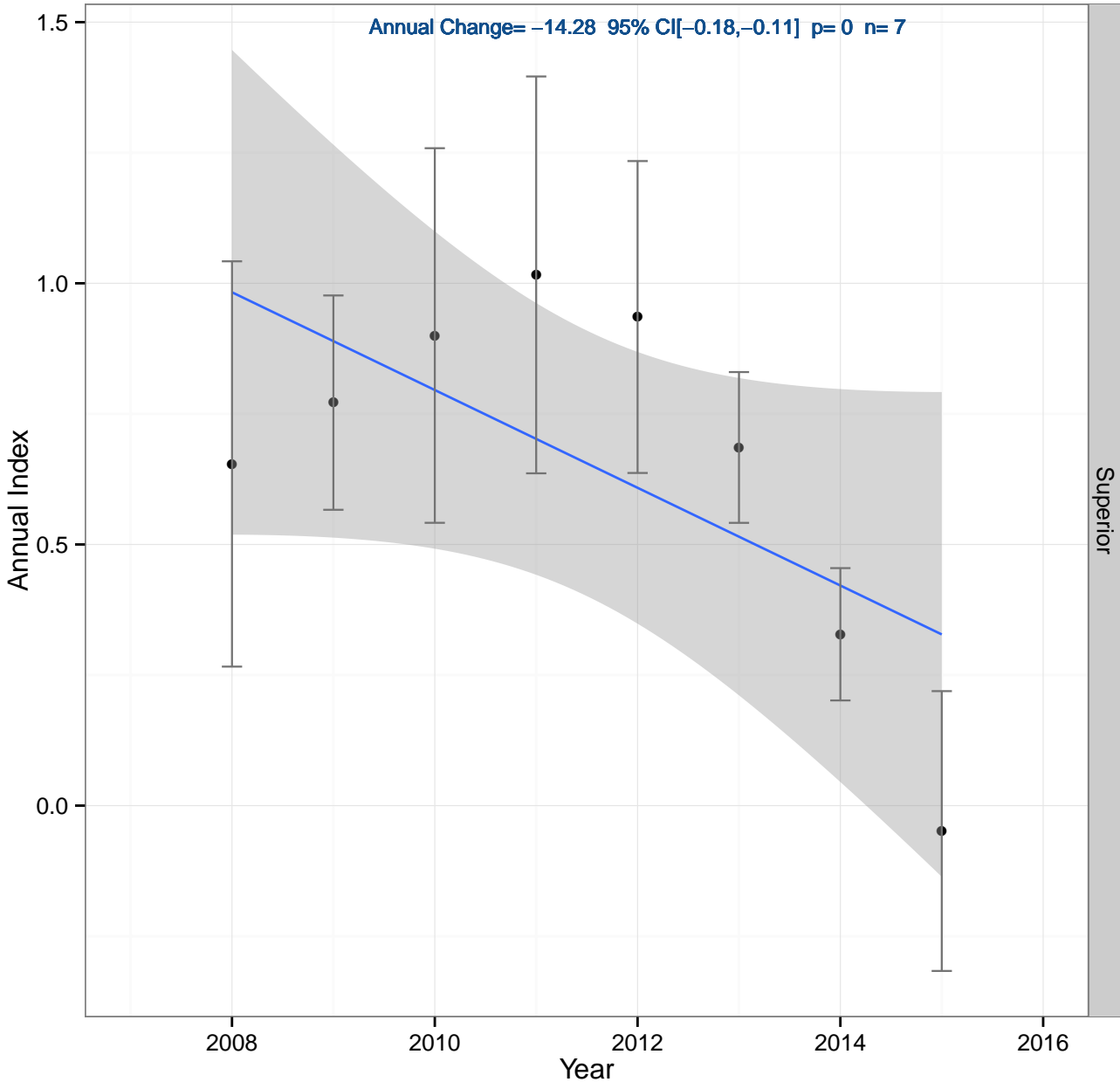
Chipping Sparrow

Annual Change= 5.05 95% CI[-0.11,0.19] p= 0.6 n= 6



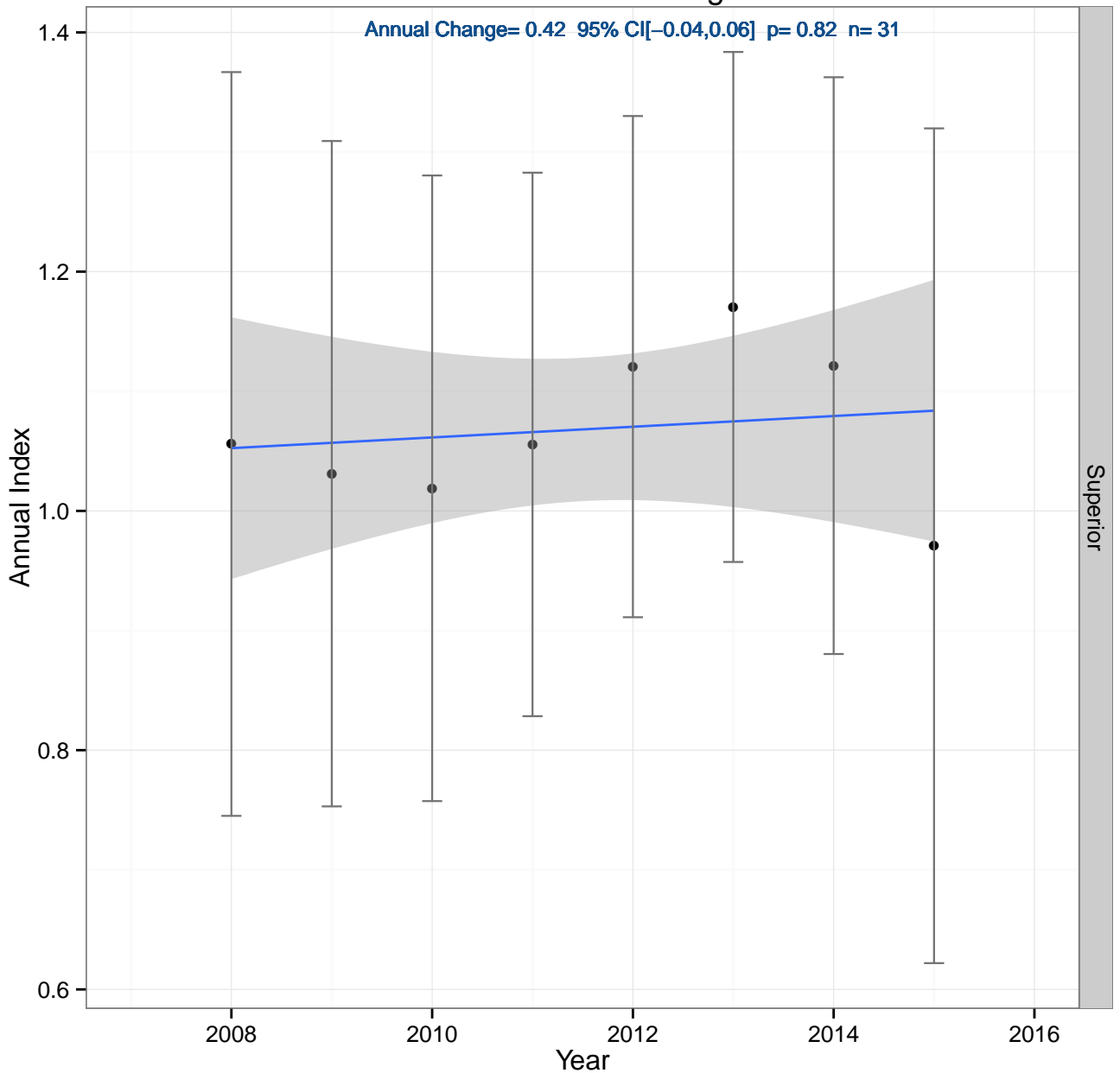
Common Raven

Annual Change= -14.28 95% CI[-0.18,-0.11] p= 0 n= 7



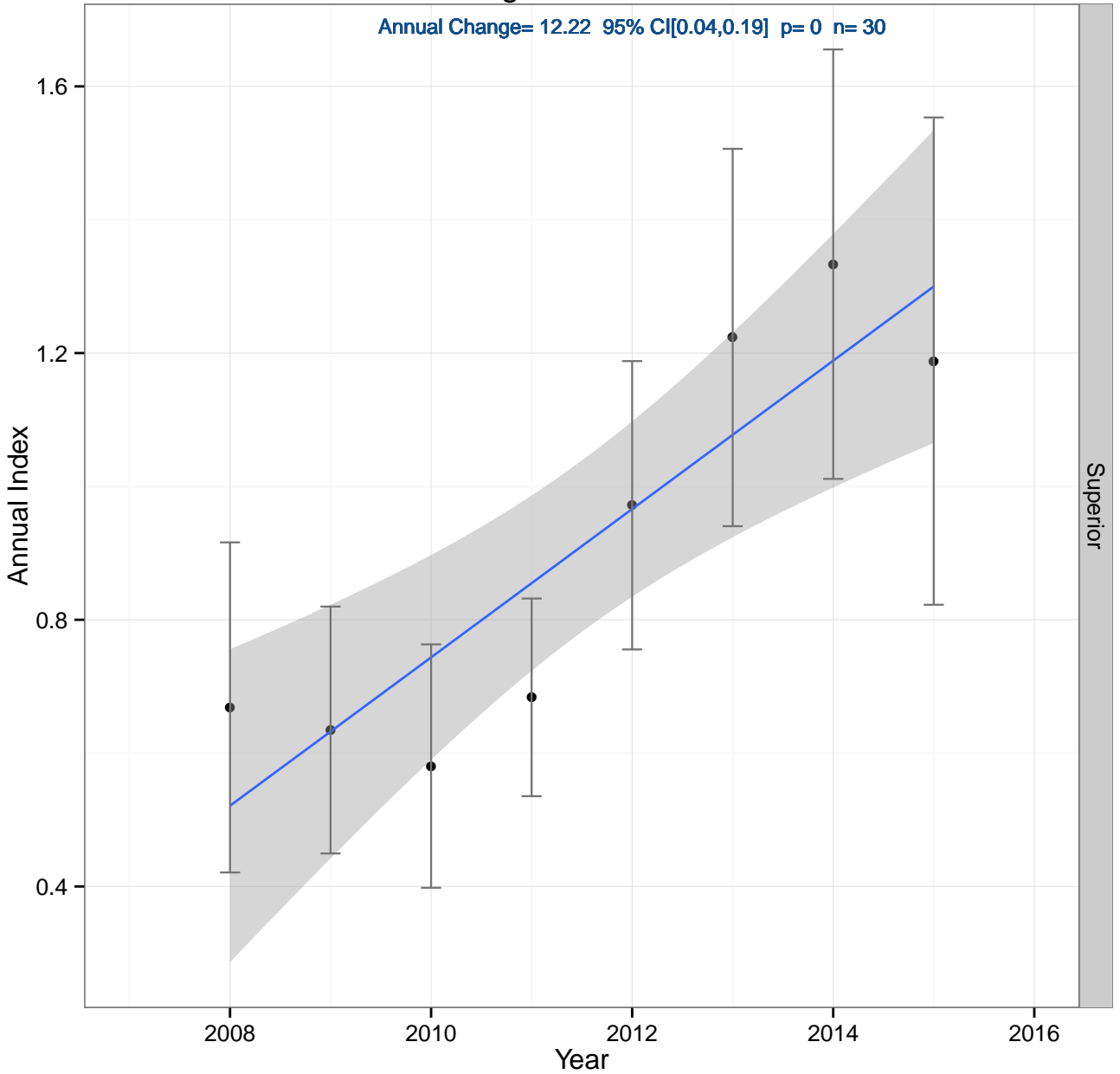
Golden-crowned Kinglet

Annual Change= 0.42 95% CI[-0.04,0.06] p= 0.82 n= 31



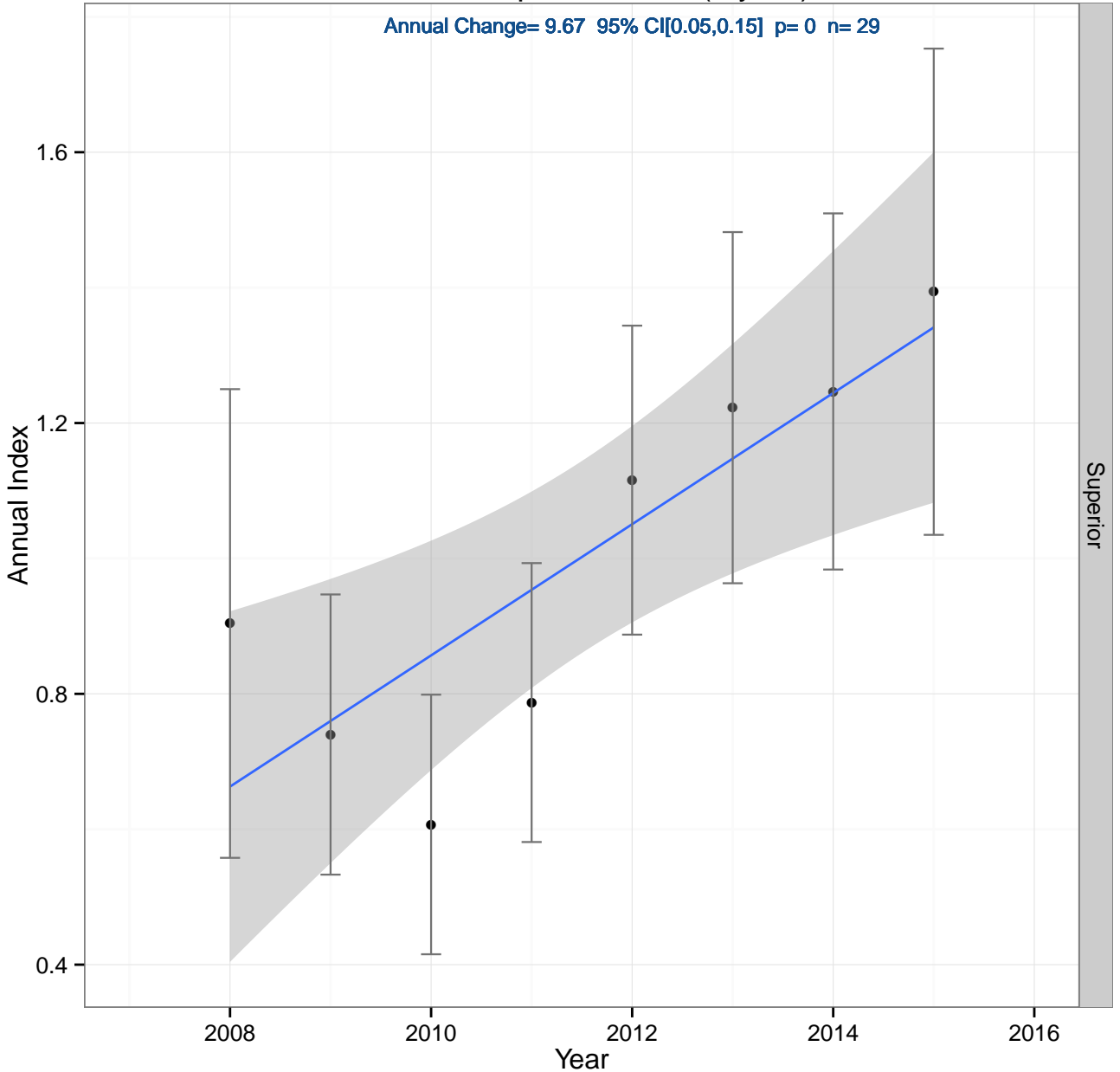
Magnolia Warbler

Annual Change= 12.22 95% CI[0.04,0.19] $p=0$ $n=30$



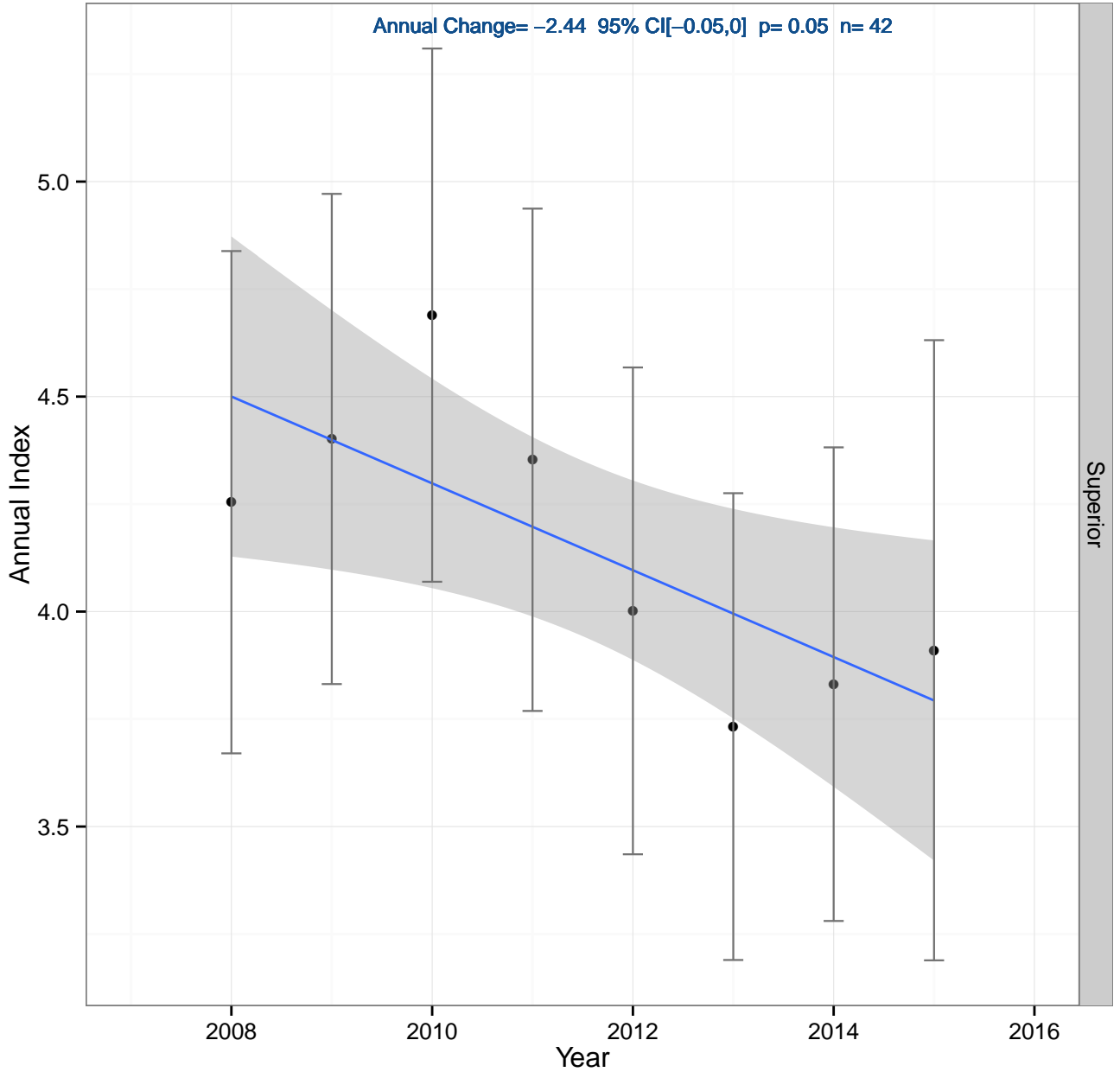
Yellow-rumped Warbler (Myrtle)

Annual Change= 9.67 95% CI[0.05,0.15] p= 0 n= 29

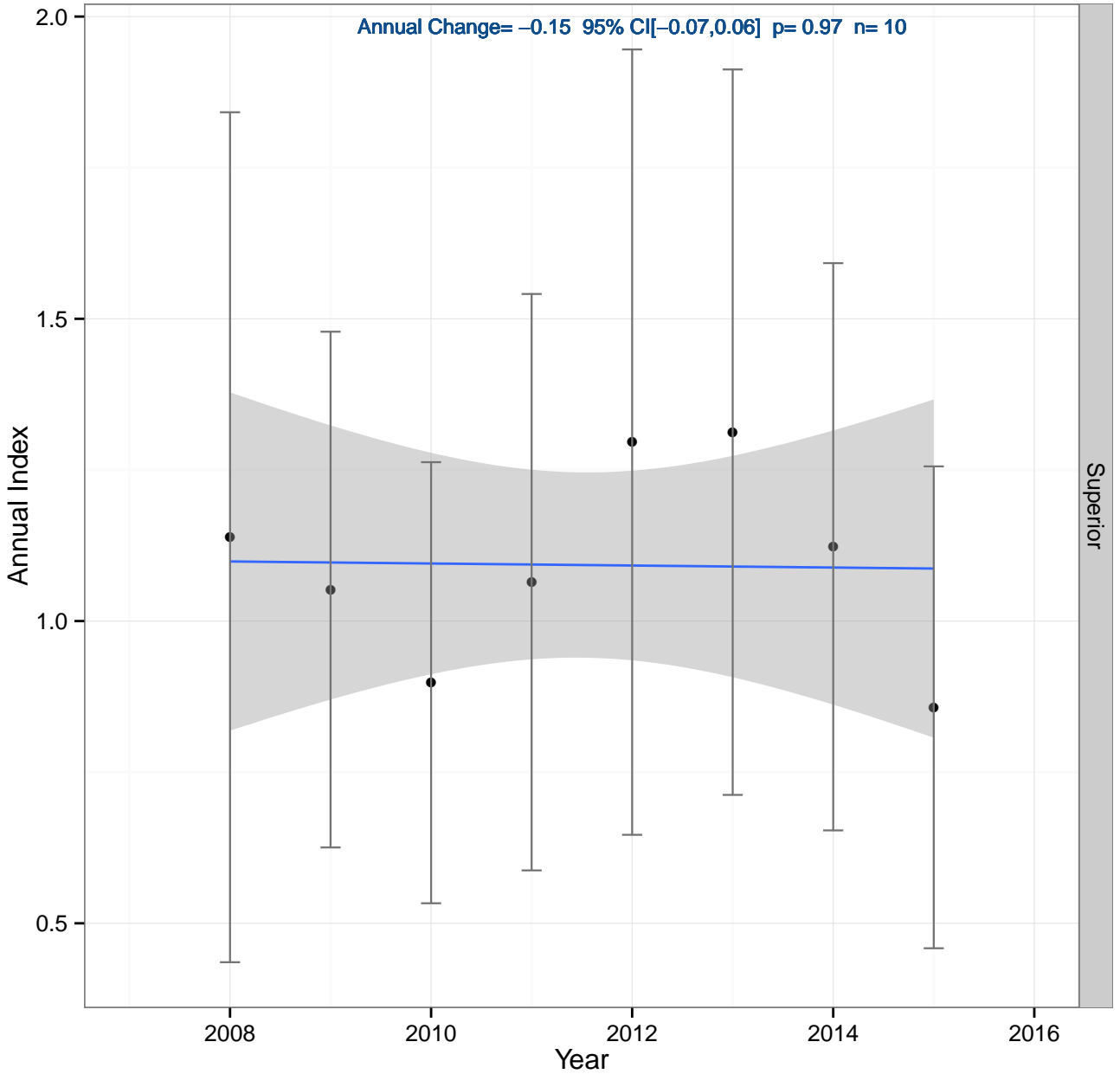


Nashville Warbler

Annual Change= -2.44 95% CI[-0.05,0] p= 0.05 n= 42

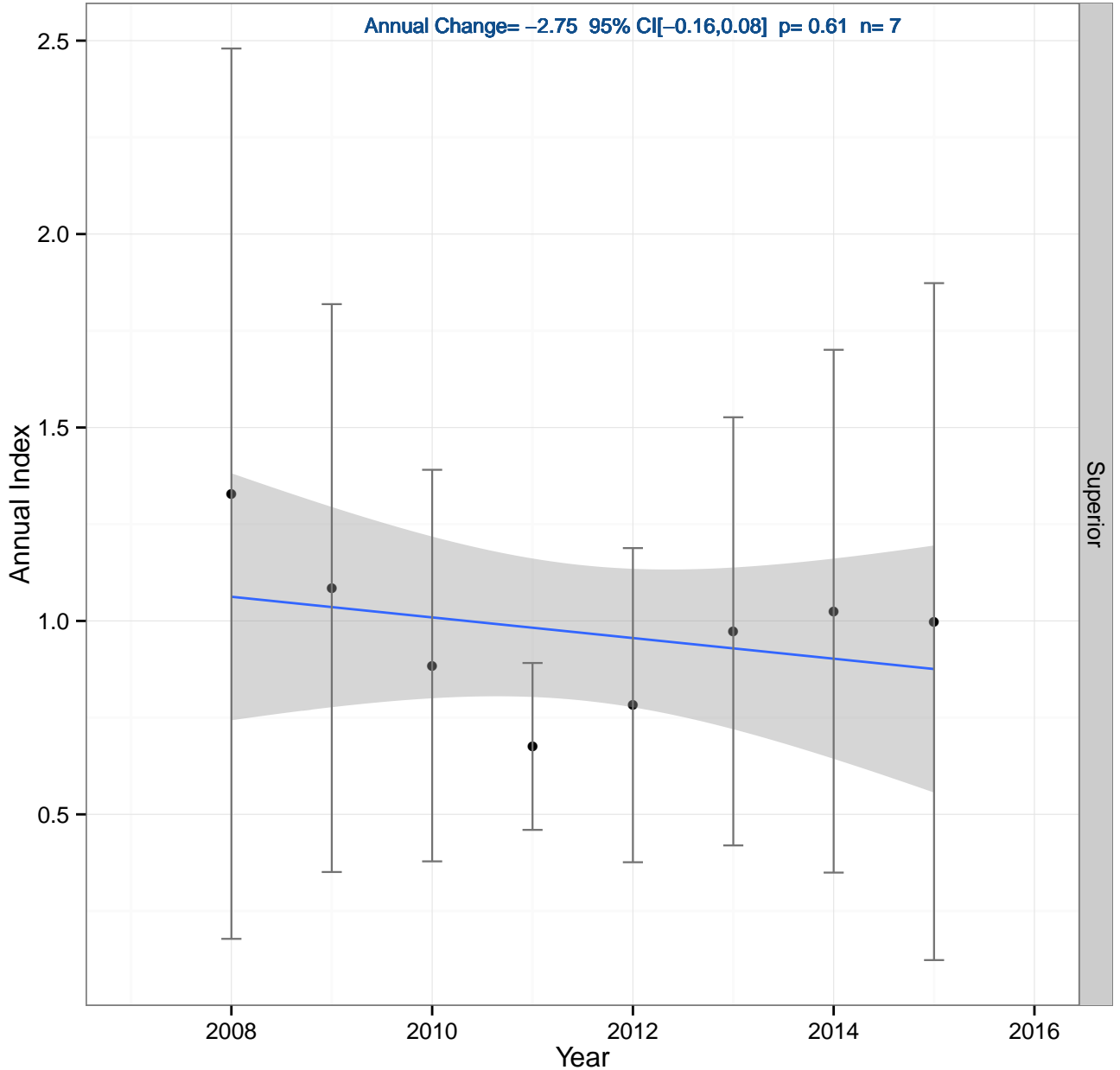


Northern Parula



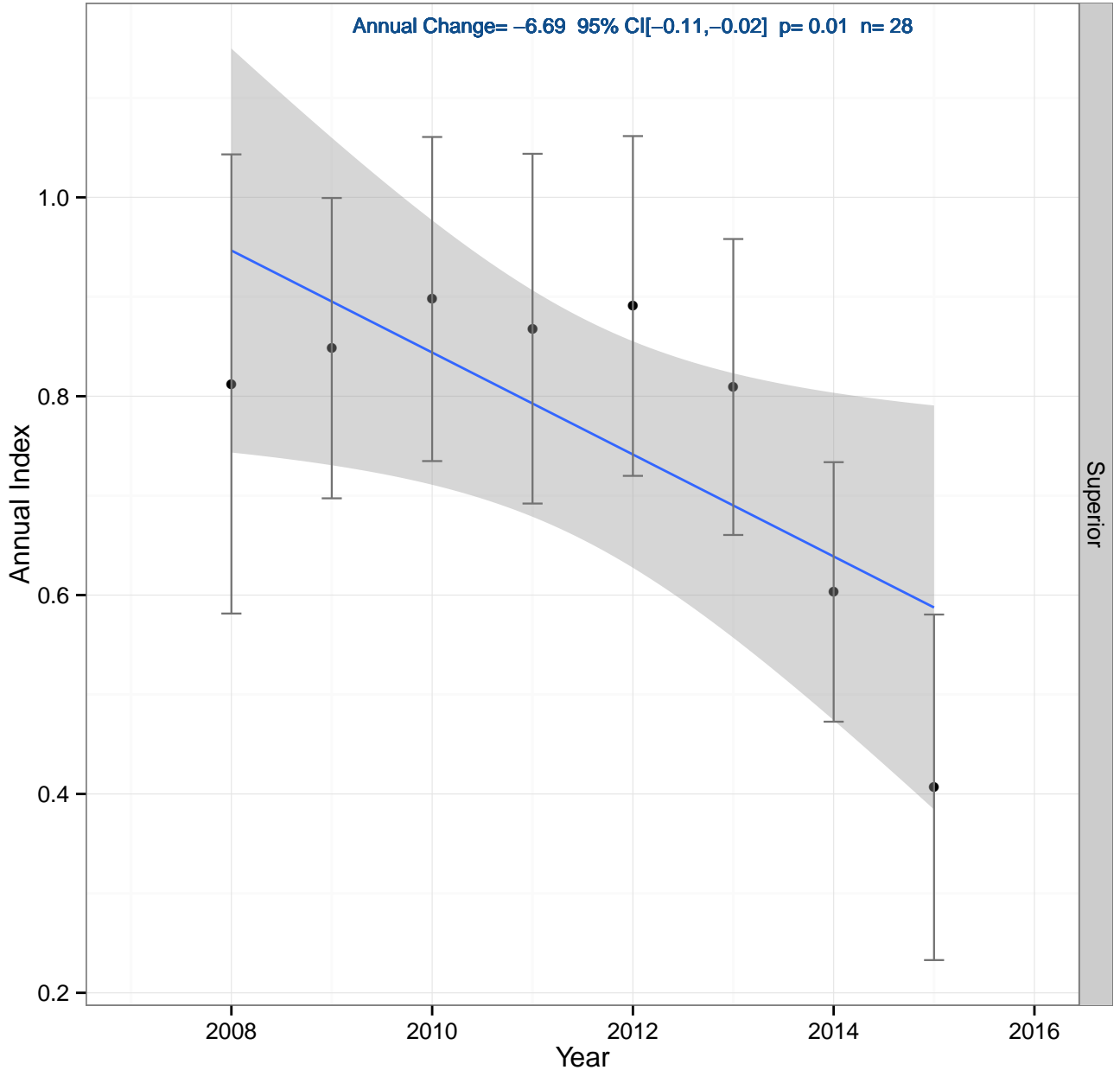
Northern Waterthrush

Annual Change = -2.75 95% CI $[-0.16, 0.08]$ $p = 0.61$ $n = 7$



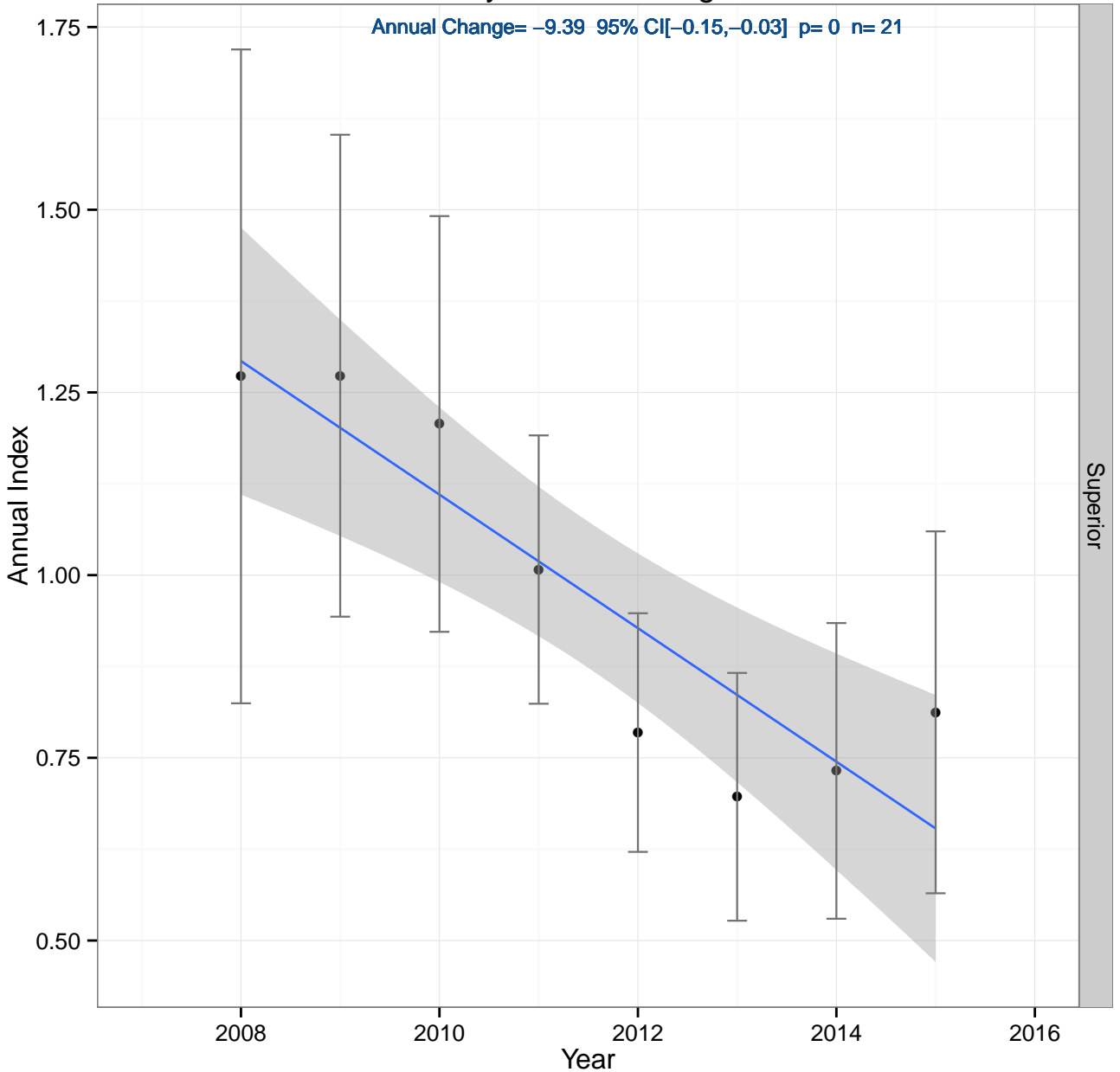
Red-breasted Nuthatch

Annual Change= -6.69 95% CI[$-0.11, -0.02$] $p=0.01$ $n=28$



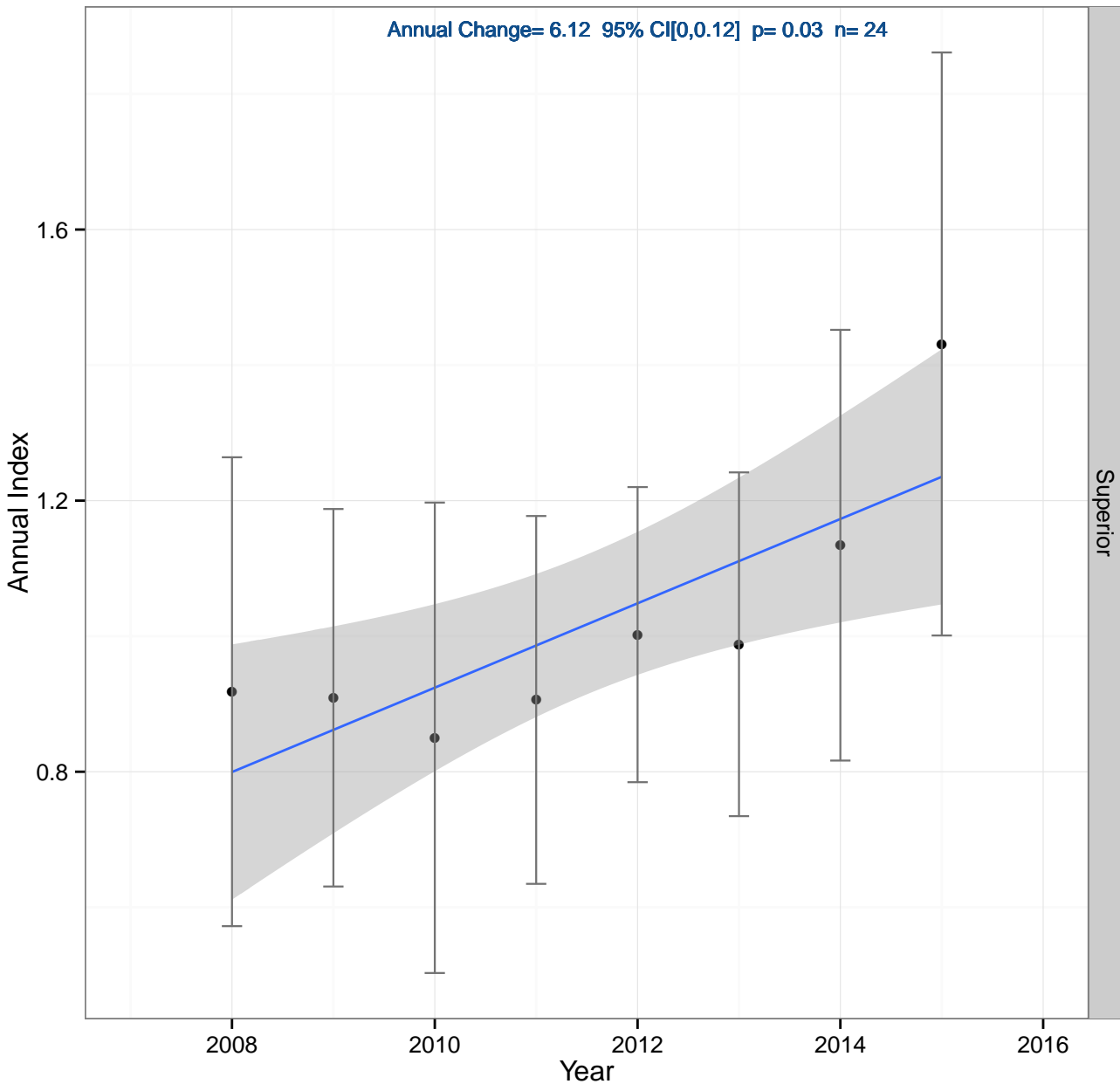
Ruby-crowned Kinglet

Annual Change= -9.39 95% CI[-0.15,-0.03] p= 0 n= 21



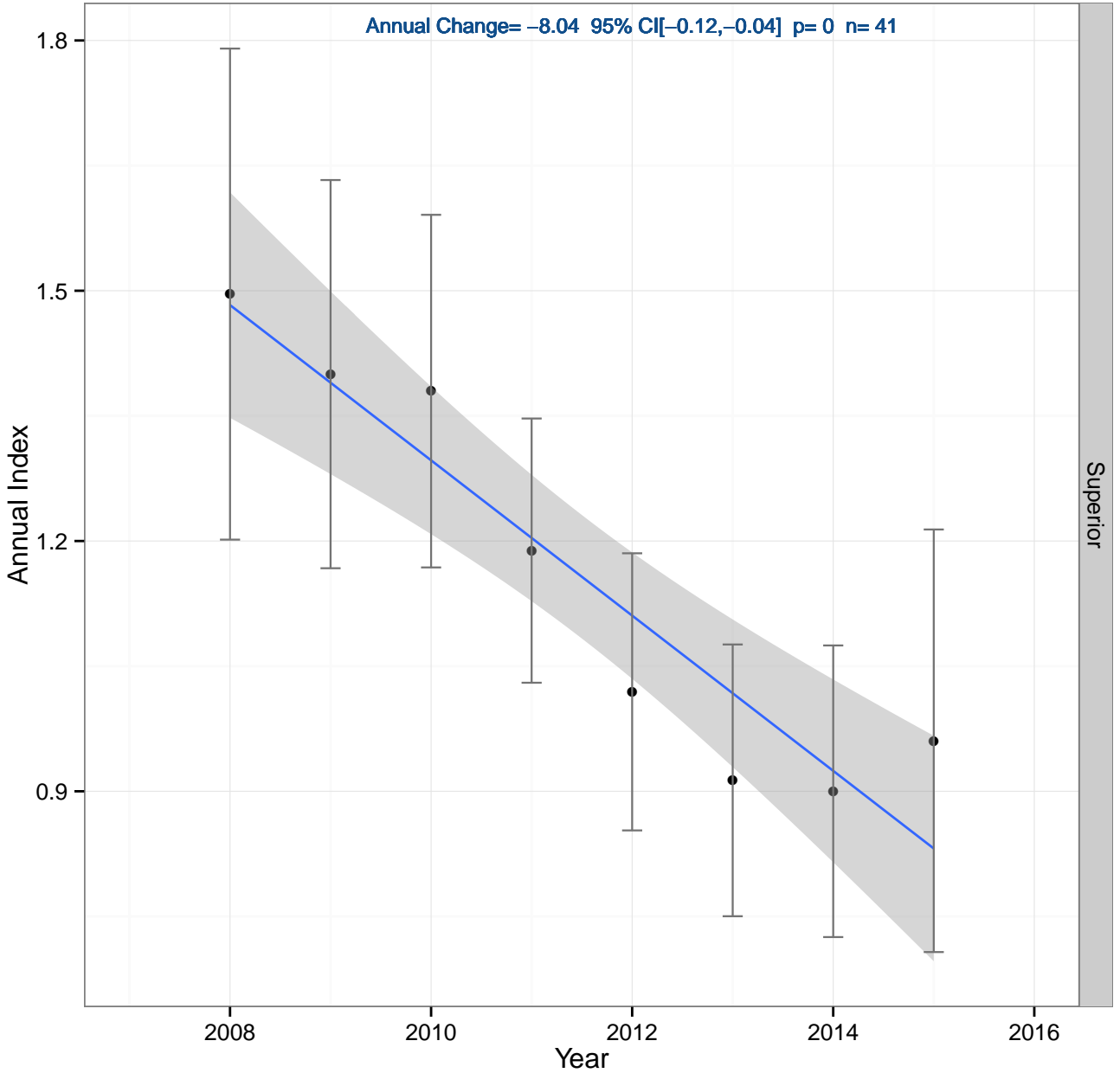
Swainson's Thrush

Annual Change= 6.12 95% CI[0,0.12] p= 0.03 n= 24



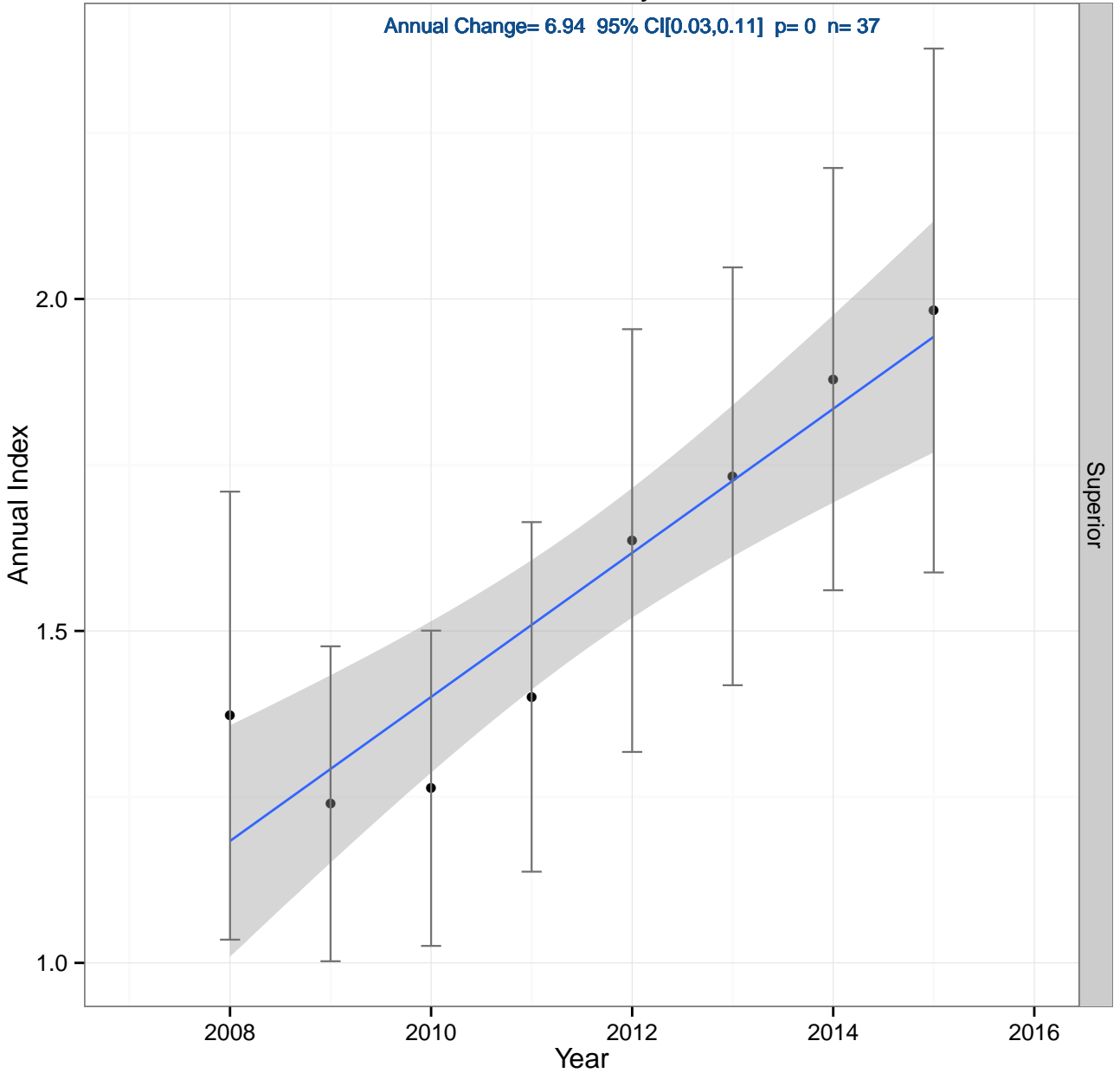
Winter Wren

Annual Change = -8.04 95% CI $[-0.12, -0.04]$ $p = 0$ $n = 41$



Yellow-bellied Flycatcher

Annual Change= 6.94 95% CI[0.03,0.11] p= 0 n= 37



Superior