

# Historic Andrew Peterson Farmstead Virtual Reality App



## Prepared by

Terrence Caploe, Wangzhuo He, Nicole Matson, and Letao Zhang

Students in ARCH 3250: Design Workshop: Community Design Practice  
Instructor: James Wheeler

---

## Prepared on Behalf of

Carver County Historical Society

Spring 2016

Resilient Communities Project

---

UNIVERSITY OF MINNESOTA  
Driven to Discover<sup>SM</sup>



This project was supported by the Resilient Communities Project (RCP), a program at the University of Minnesota that convenes the wide-ranging expertise of U of M faculty and students to address strategic local projects that advance community resilience and sustainability. RCP is a program of the Center for Urban and Regional Affairs (CURA) and the Institute on the Environment.



This work is licensed under the Creative Commons Attribution-NonCommercial 3.0 Unported License. To view a copy of this license, visit <http://creativecommons.org/licenses/by-nc/3.0/> or send a letter to Creative Commons, 444 Castro Street, Suite 900, Mountain View, California, 94041, USA. Any reproduction, distribution, or derivative use of this work under this license must be accompanied by the following attribution: “Produced by the Resilient Communities Project at the University of Minnesota, 2016. Reproduced under a Creative Commons Attribution-NonCommercial 3.0 Unported License.”

This publication may be available in alternate formats upon request.

**Resilient Communities Project**

University of Minnesota  
330 HHHSPA  
301—19th Avenue South  
Minneapolis, Minnesota 55455  
Phone: (612) 625-7501  
E-mail: [rcp@umn.edu](mailto:rcp@umn.edu)  
Web site: <http://www.rcp.umn.edu>



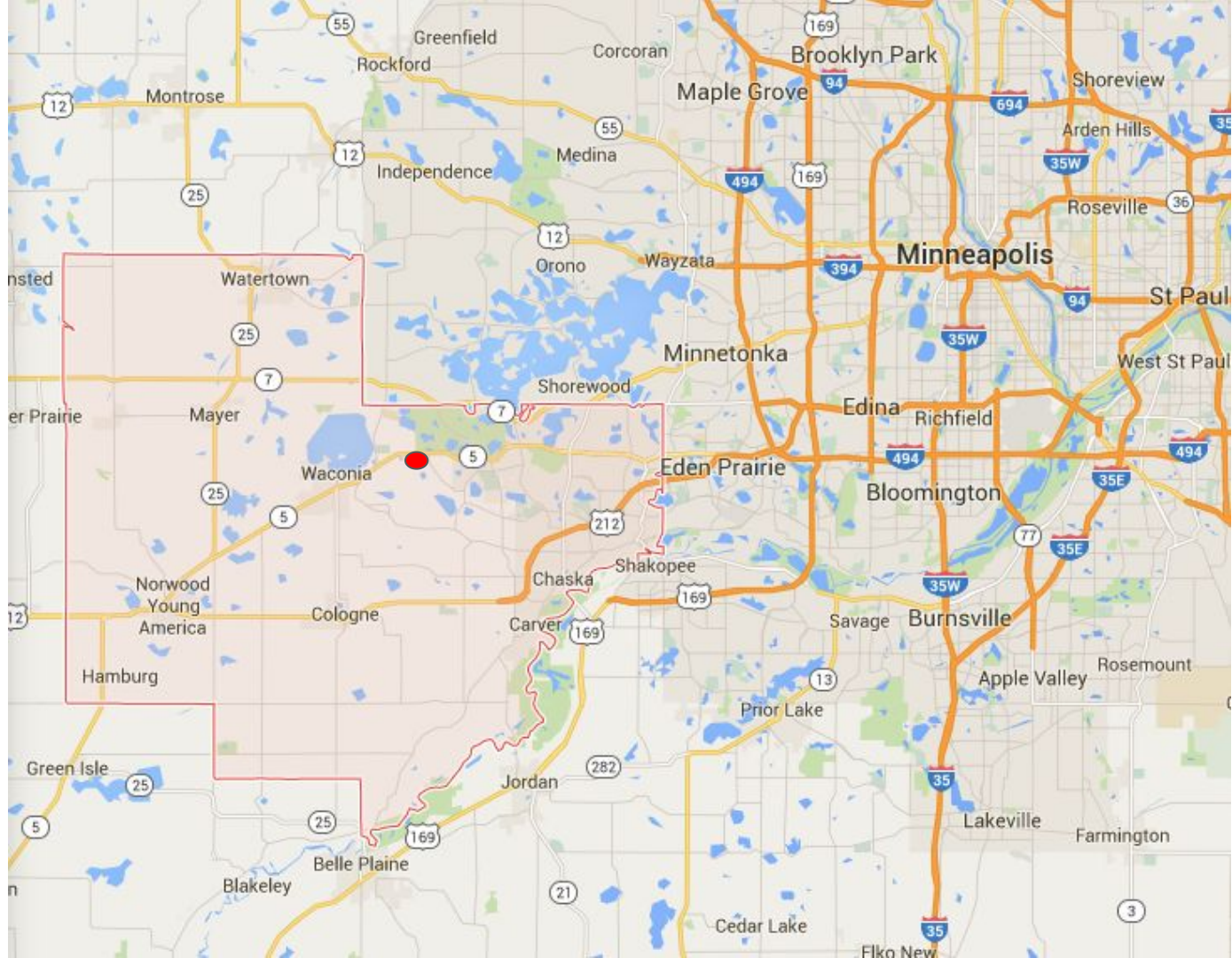
*The University of Minnesota is committed to the policy that all persons shall have equal access to its programs, facilities, and employment without regard to race, color, creed, religion, national origin, sex, age, marital status, disability, public assistance status, veteran status, or sexual orientation.*

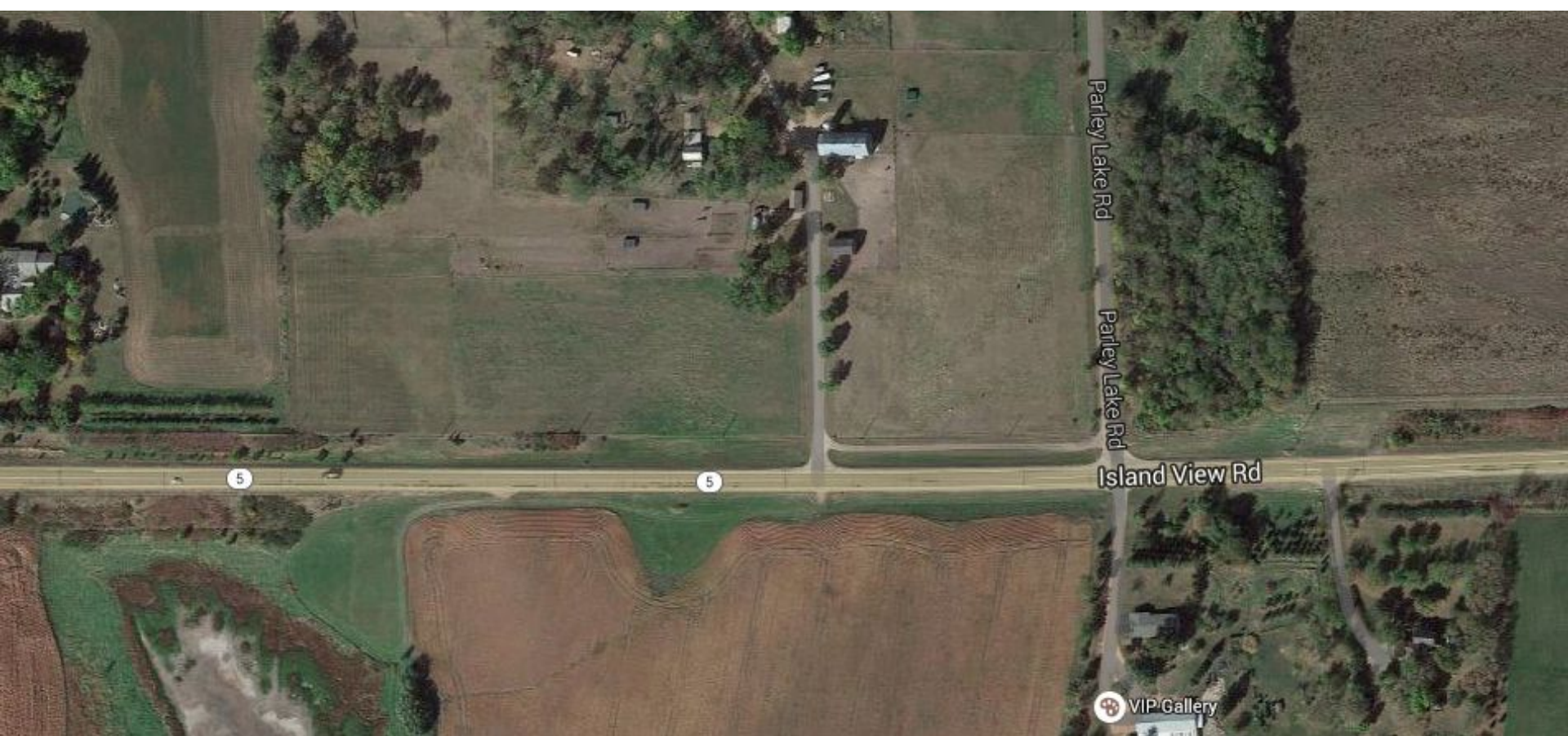


# Historic Andrew Peterson Farmstead Virtual Reality Application









Parley Lake Rd

Parley Lake Rd

Island View Rd

5

5



VIP Gallery

## Project Context

---

**Andrew Peterson** emigrated from Rydsnäs, Sweden in 1850. He moved to Minnesota in 1855, claiming 160 acres near the southeastern shore of Lake Waconia. He kept a series of **daily diaries** and ledgers dating from 1850 until a few days until his death in 1898. In October 11, 1979, Andrew Peterson Farm got listed in the U.S. National Register of Historic Places.



“...A settlement was reached in 2014 between the sons and the **Historical Society** that gave 12.5 acres, including the historic buildings such as the 1917 dairy barn and Chaska brick house, to the Historical Society”



1



turning the property into a historic tourist destination



2



plan out service amenities to accompanied the increased traffic flows





## 2- Schematic Design



## 3- Preliminary Design

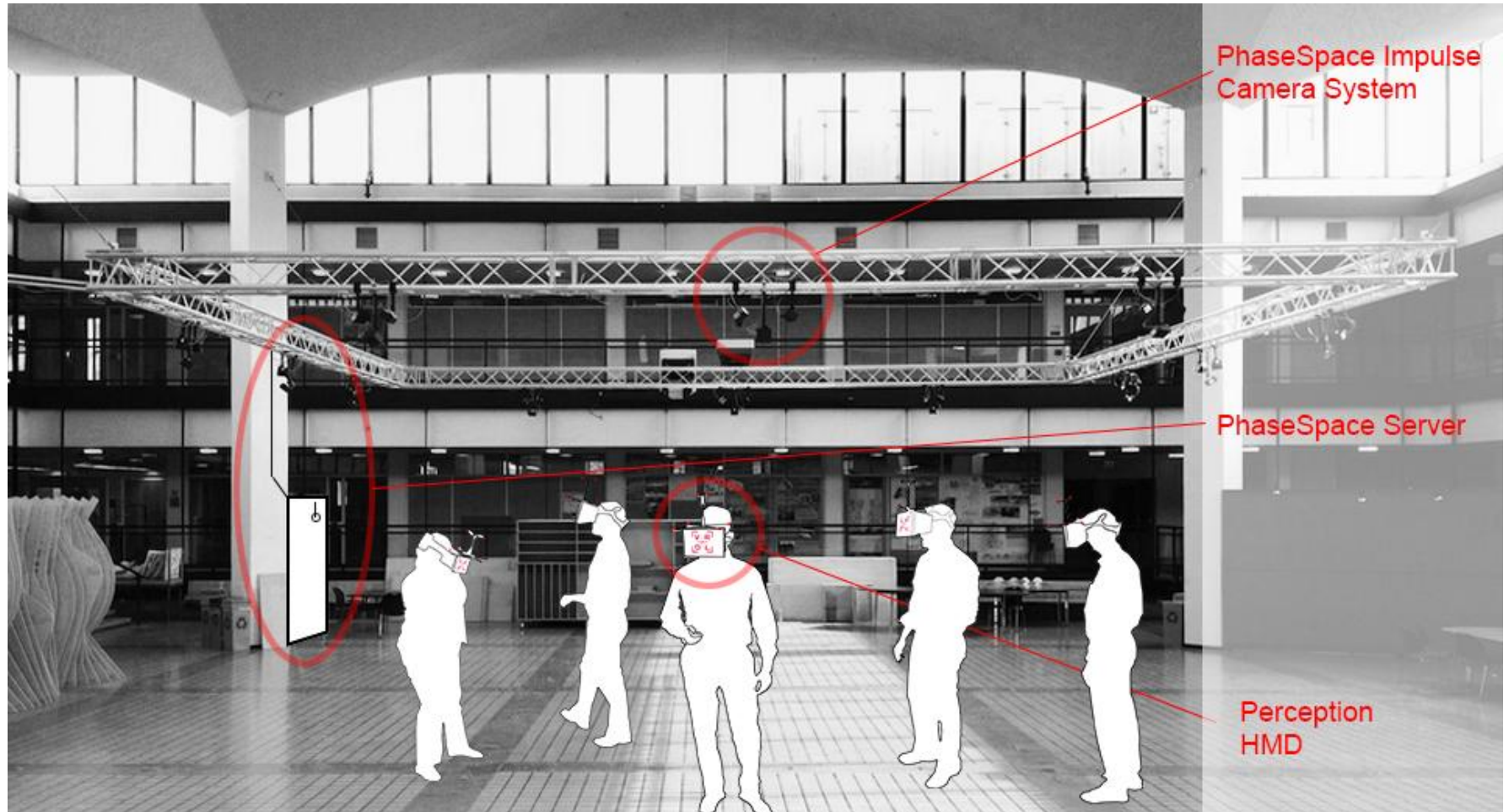


# Future Plan

---



# University of Minnesota's Virtual Reality



# Consumer VR



## Google cardboard

\$15

Includes: Google cardboard viewer and lenses



## Gear VR

\$99

Includes just the headset

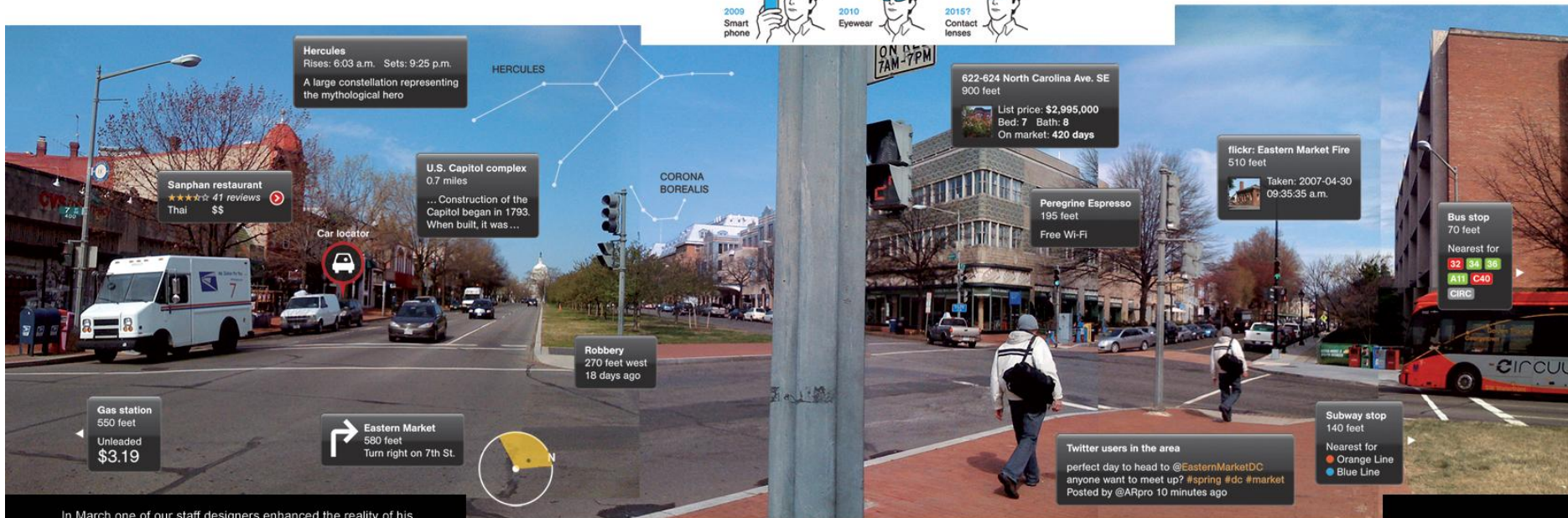


## Oculus Rift

\$599

Includes: headset, sensor, remote, cables, Xbox One controller.

# Augmented Reality



In March one of our staff designers enhanced the reality of his Washington, D.C., neighborhood. Smart phone applications (apps) added layers of information to what he saw—called out in this composite of five photos, each taken with his phone.

**UP AND AWAY** Point your phone at the sky and find stars hidden by daylight. Aim at a tourist spot and see its history plus info for visitors. For an augmented-reality check, tap into crime stats.

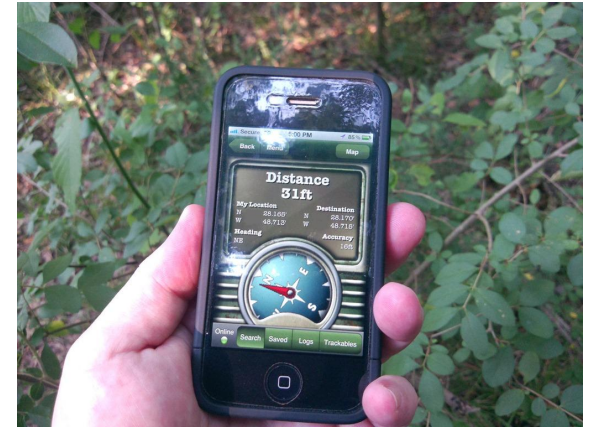
**REAL DEALS** Various apps can steer you to the cheapest gas around, mass-transit options, good food, and Wi-Fi spots. You can also learn the price of that town house that's up for sale.

**STREET PALS** The Tweeps Around app tells if tweeters are near. Flickr displays area photos by members (Eastern Market, above). In the works: an app to match faces to social-network profiles.





# Geocaching/ Tag

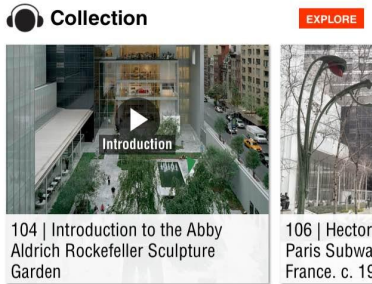




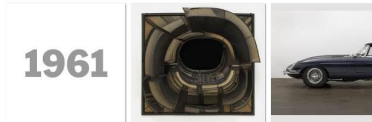
# Virtual Reality Experience - British Columbia



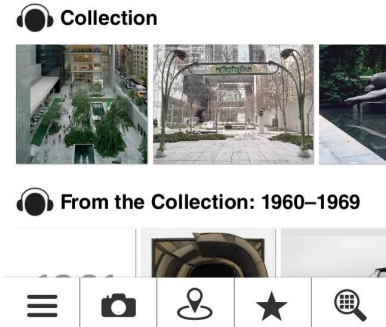
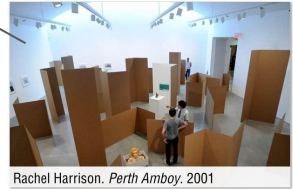
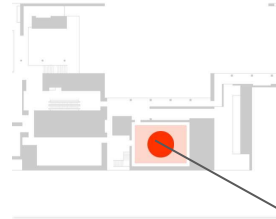
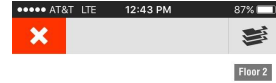
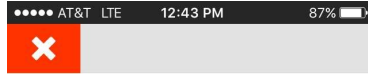
# MoMA

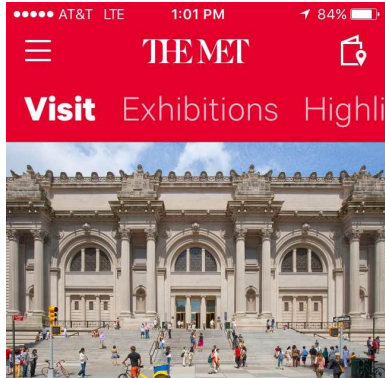


## From the Collection: 1960–1969



## Jackson Pollock: A Collection Survey, 1934–1954





**The Met Fifth Avenue**

Open today, until 5:30 PM



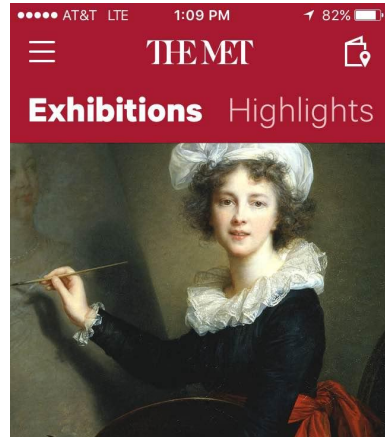
**The Met Breuer**

Open today, until 5:30

**The Met Cloisters**

Open today, until 5:15

Home Screen

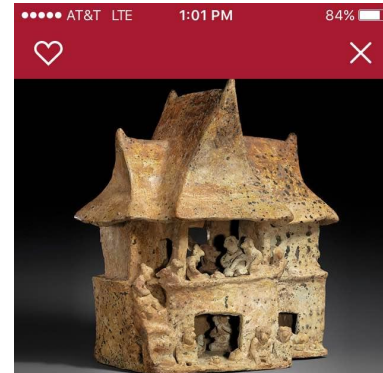


**Vigée Le Brun:  
Woman Artist in  
Revolutionary  
France**



Through May 14

Audio for some collections

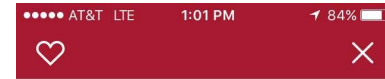


**Design for Eternity**

Through September 17  
at The Met Fifth Avenue

On view in Gallery 359 (Design for  
Eternity), Art of Africa Oceania and  
the Americas, First Floor

Choose a collections and get more details



**Show On Map**

**Save to Calendar**

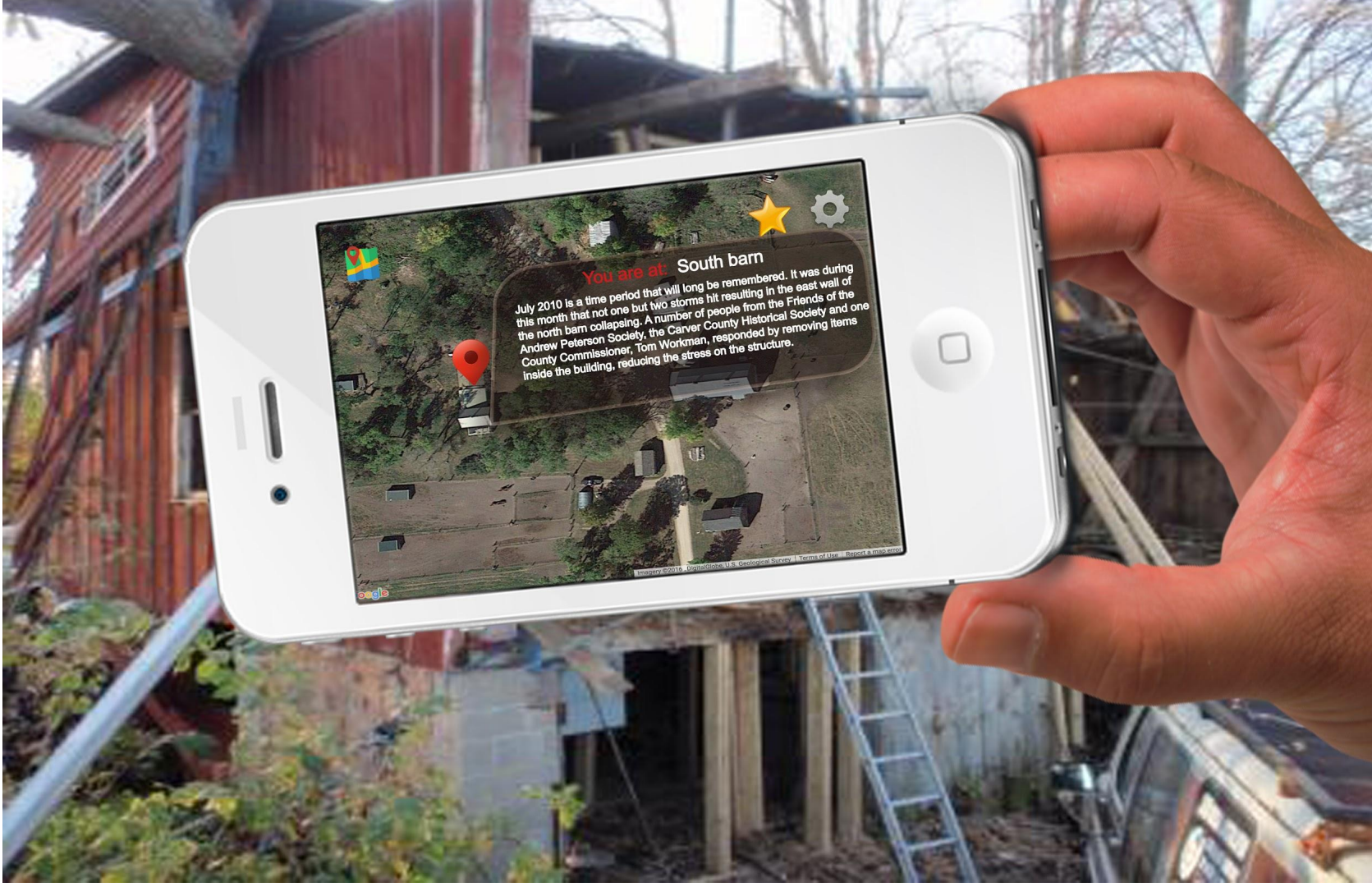
From the first millennium B.C. until the arrival of Europeans in the sixteenth century, artists from the ancient Americas created small-scale architectural models to be placed in the tombs of important individuals. These works in stone, ceramic, wood, and metal range from highly abstracted, minimalist



### Andrew Peterson farmstead

As described by Carlton C. Qualey in an article in the MHS Collection, summer 1972, the legacy of Andrew Peterson is that "he not only mastered diversified farming but also became a leading horticulturist of the entire Upper Mississippi River Valley." The historic farmstead where Andrew Peterson and his family lived and worked was placed on the National Register of Historic Places in 1978.





**You are at: South barn**

July 2010 is a time period that will long be remembered. It was during this month that not one but two storms hit resulting in the east wall of this north barn collapsing. A number of people from the Friends of the Andrew Peterson Society, the Carver County Historical Society and one County Commissioner, Tom Workman, responded by removing items inside the building, reducing the stress on the structure.

©2010 Google. All rights reserved. Google, the Google logo, and Google Maps are trademarks of Google Inc. All other marks are the property of their respective owners.