



MEDICAL SCHOOL

2016 Commencement Ceremony

Friday, May 6, 2016

Northrop Auditorium, Minneapolis, MN

UNIVERSITY OF MINNESOTA

UNIVERSITY OF MINNESOTA

Twin Cities Campus

*Office of the Dean
Medical School*

*Office at C-607 Mayo
Mayo Mail Code 293
420 Delaware Street S.E.
Minneapolis, MN 55455*

Congratulations to each and every one of the graduating members of the University of Minnesota Medical School Class of 2016! Today, we will bestow upon you the degree of Doctor of Medicine, and you will receive the doctoral hood that symbolizes this achievement. This is an exciting day, as we get to officially and proudly welcome you to the medical profession.

Graduation marks an important personal and professional milestone for all 231 of you. As graduates, you have, of course, mastered the M.D. curriculum required of you, but you have also accomplished great things outside of the classroom and away from campus. There is no one formula for being a great doctor other than this: You must find your own path, incorporate your unique talents, and apply your passions to the job ahead of you every single day. That is how you will make the most of your University of Minnesota medical education, and it is how you will go out and make a real difference in the community.

Your medical education has enduring value. You will walk out the door today as University of Minnesota Medical School alumni—and that is a badge that you should wear proudly. Our Medical School has a long tradition of educating and training physicians dedicated to excellence. It is a tradition that each of you now has a responsibility to uphold, and I know you will make us proud.

Although today marks the end of your time as medical students, I want to remind you that it marks only the beginning of your lifelong learning journey as physicians and as professionals. Always remember the oath you take today. Keep what is best for the patient at the center of your thinking as you move on to residency and a medical practice of your own. That is how you will live up to this institution's proud tradition of excellence. That is how you will become health care leaders.

On behalf of all of us at the University of Minnesota Medical School, congratulations and best of luck as you begin the next chapter of your lives. You are the future of medicine, and the future looks bright.

Brooks Jackson, M.D., M.B.A.

Medical School Dean

Vice President for Health Sciences

UNIVERSITY OF MINNESOTA MEDICAL SCHOOL

ADMINISTRATION

Eric W. Kaler, Ph.D.	President, University of Minnesota
Brooks Jackson, M.D., M.B.A.	Dean of the Medical School and Vice President for Health Sciences
Bobbi S. Daniels, M.D.	Vice Dean for Clinical Affairs
Tucker W. LeBien, Ph.D.	Vice Dean for Research
Paula Termuhlen, M.D.	Regional Campus Dean, Duluth
Mark S. Paller, M.D., M.S.	Senior Associate Dean
Mark E. Rosenberg, M.D.	Vice Dean for Education
Robert Englander, M.D., M.P.H.	Associate Dean for Undergraduate Medical Education
John S. Andrews, M.D.	Associate Dean for Graduate Medical Education
Meghan Walsh, M.D., M.P.H.	Associate Dean for Faculty Affairs at Hennepin County Med. Ctr.
Kent B. Crossley, M.D.	Associate Dean for Faculty Affairs at Veterans Administration Med. Ctr.
Felix K. Ankel, M.D.	Associate Dean for Faculty Affairs at Regions Hospital
Clifford Steer, M.D.	Associate Dean for Faculty Affairs
Kendall B. Wallace, Ph.D.	Associate Dean for Faculty Affairs, Duluth
Robin L. Michaels, Ph.D.	Associate Dean for Student Affairs and Admissions, Duluth
Michael H. Kim, M.D.	Assistant Dean for Student Affairs
Jeffrey G. Chipman, M.D., F.A.C.S.	Assistant Dean for Scientific Foundations
Anne G. Pereira, M.D., M.P.H.	Assistant Dean for Clinical Education
Raymond G. Christensen, M.D.	Associate Dean for Rural Health, Duluth
Alan M. Johns, M.D., M.Ed.	Associate Dean for Medical Education, Curriculum, and Technology, Duluth
Suzanne van den Hoogenhof, Ph.D.	Interim Assistant Dean for Assessment, Curriculum and Evaluation
Mustafa al'Absi, Ph.D.	Director, Duluth Medical Research Institute
Dimple Patel, M.S.	Associate Dean for Admissions
Kathleen D. Brooks, M.D., M.B.A., M.P.A.	Director, Rural Physician Associate Program
W. Scott Slattery, Ph.D., L.P.	Director, Learner Development
Mary J. Owens, M.D.	Director, Center of American Indian and Minority Health, Duluth
Mia Mullins	Director of Operations, Office of Continuing Professional Development
Yoji Shimizu, Ph.D.	Director, Medical Scientist Training Program (M.D./Ph.D.)
Peter J. Mitsch, C.P.A.	Chief Financial Officer
Mary E. Tate, B.A.	Director, Office of Minority Affairs and Diversity

COUNCIL OF BASIC HEALTH SCIENCES

James R. Allen, Ph.D.	Behavioral Health and Population Sciences, Duluth
David A. Bernlohr, Ph.D.	Biochemistry, Molecular Biology and Biophysics
Lynne T. Bemis, Ph.D.	Biomedical Sciences, Duluth
Michael B. O'Connor, Ph.D.	Genetics, Cell Biology and Development
Joseph M. Metzger, Ph.D.	Integrative Biology and Physiology
Ashley T. Haase, M.D.	Microbiology and Immunology
Timothy J. Ebner, M.D., Ph.D.	Neuroscience
Jill M. Siegfried, Ph.D.	Pharmacology

COUNCIL OF CLINICAL SCIENCES

Michael H. Wall, M.D.	Anesthesiology
Maria K. Hordinsky, M.D.	Dermatology
Michelle H. Biros, M.D. (Interim)	Emergency Medicine
Macaran A. Baird, M.D.	Family Medicine and Community Health
Ruth E. Westra, D.O., M.P.H.	Family Medicine and Community Health, Duluth
Leo T. Furcht, M.D.	Laboratory Medicine and Pathology
Peter Igarashi, M.D.	Medicine
Jerrold L. Vitek, M.D., Ph.D.	Neurology
Stephen J. Haines, M.D., F.A.C.S.	Neurosurgery
Linda F. Carson, M.D., F.A.C.O.G.	Obstetrics, Gynecology and Women's Health
Erik van Kuijk, M.D., Ph.D.	Ophthalmology and Visual Neurosciences
Denis R. Clohisy, M.D.	Orthopaedic Surgery
Bevan Yueh, M.D., M.P.H.	Otolaryngology
Joseph P. Neglia, M.D., M.P.H.	Pediatrics
Dennis D. Dykstra, M.D., Ph.D.	Physical Medicine and Rehabilitation
Mark S. Paller, M.D., M.S. (Interim)	Psychiatry
Kathryn E. Dusenbery, M.D.	Radiation Oncology
Charles A. Dietz, M.D.	Radiology
David A. Rothenberger, M.D.	Surgery
Badrinath R. Konety, M.D., M.B.A.	Urology

2015-2016 MEDICAL SCHOOL FACULTY ADVISORS

Emily C. Borman-Shoap, M.D..... Assistant Professor, Pediatrics
Holly C. Boyer, M.D. Associate Professor, Otolaryngology
Raymond G. Christensen, M.D.... Assistant Professor, Family Medicine/Community Health, Duluth
Marshall I. Hertz, M.D..... Judith H. and John M. Murphy Professor of Medicine
Tara L. Holm, M.D. Assistant Professor, Radiology
Jane M. Lewis, M.D.Assistant Professor, Urology
Taj Mustapha, M.D.....Assistant Professor, Medicine and Pediatrics
Nersi Nikakhtar, M.D. Assistant Professor, Medicine
Emily C. Onello, M.D. Assistant Professor, Family Medicine/Community Health, Duluth
Jennifer Pearson, M.D. Assistant Professor, Family Medicine/Community Health, Duluth
Jacob P. Prunuske, M.D., M.S.P.H. Assistant Professor, Family Medicine/Community Health, Duluth
David J. Satin, M.D. Assistant Professor, Family Medicine/Community Health
Tseганesh Selameab, M.D. Assistant Professor, Medicine
Ezgi Tiryaki, M.D. Associate Professor, Neurology
Peter F. Weissmann, M.D. Associate Professor, Medicine
Ruth E. Westra, D.O., M.P.H.....
.....Chair and Associate Professor, Family Medicine/Community Health, Duluth

A special thanks to all of these Faculty Advisors who have been instrumental in guiding the 2016 graduating class through their Medical School years.

HONORS

ALPHA OMEGA ALPHA HONOR MEDICAL SOCIETY

Owen P. Aftreth	Leah C. Anderson	Ashley A. Antolick
Audrey L. Bennett	Cree D. Chamberland	Robert W. Colbert
Jacob G. Eide	Elizabeth A. Feist	Colin D. Goodman
Dorissa L. Gursahaney	E. Tolga Hanhan	Jamie L. Hanson
Andrew R. Harkins	Mario Hevesi	Katie E. Hinderaker
Patrick S. Hoversten	Kathleen F. Ireland	Shahidali N. Jaffer
Sanyukta K. Janardan	Bryan M. Jepson	Mikhail A. Klimstra
Nels D. Leafblad	Grace E. Linder	Elliot G. Mills
Christina A. Morse	Jessica M. Olen	Christopher J. Perdoni
Tom D. Raisanen	Alexandra L. Schick	Elizabeth C. Stock
Sandip Suresh	Kyle S. Tamminga	Jenna V. Van Beck
Emma B. Weeding	Katherine P. Weir	Alyssa R. Wojciechowski
Elyse M. Zarling	Xue Zeng	Lindsey M. Zhang

GOLD HUMANISM HONOR SOCIETY

Owen P. Aftreth	Tiffany H. Albrecht	Emma E. Balfanz
Eve Barker	Ann E. Bergstrand	Carter J. Biewen
Kelsey Christoffel	Leah M. Clark	Maros Cunderlik
Daniel M. Dutcher	Melissa C. Eelkema	E. Peek Ehlinger
Jacob G. Eide	Abigail K. Elliott	Nathaniel A. Fondell
Sarah E. Frisch	Catherine E. Glatz	E. Tolga Hanhan
Siri M. Hill	Katie E. Hinderaker	Ryan S. Holton
Patrick S. Hoversten	Daniel P. Larson	Nels D. Leafblad
Grace E. Montes	Mark L. Nelson	Justine V. Ngo
Tony Huy T. Nguyen	Jessica M. Olen	Roma G. Patel
Kaia E. Pearson	David P. Rakoff	Casey L. Sautter
Anna T. Steffan	Jesse J. Susa	Angela L. Volkert
Lindsey M. Zhang	Rheanne K. Zimmerman	

HONORS

MEDICAL SCHOOL STUDENT COUNCIL

Class of 2016 President.	Angela L. Volkert
Class of 2016 Class Representatives.	Leah M. Clark
	Daniel M. Dutcher
	Katarina L. Wrzos

STUDENT MEMBERS OF MEDICAL SCHOOL ADMINISTRATIVE COMMITTEES

Admissions Committee.	Sarah E. Frisch
	Stephen P. McHale
	Phillip L. Thomas
Education Council	Ryan S. Holton
Peer Review Committee	Arie DeGrio
	Andrew R. Harkins
	Kathryn H. Reise
Clinical Education Committee	Maros Cunderlik
	Anna R. Gregoire
AAMC-OSR Representative.	Melissa C. Eelkema
Committee on Student Scholastic Standing	David P. Rakoff

ACKNOWLEDGEMENTS

A special thanks to Angela L. Volkert, Leah M. Clark, Daniel M. Dutcher, Solveig Hagen, and Katarina L. Wrzos for all their work on planning graduation and the matching festivities for all of the senior medical students this year.

ORDER OF EVENTS

1:45 p.m. **PRELUDE AND PROCESSIONAL**

2:00 p.m. **WELCOME**

Brooks Jackson, M.D., M.B.A.

Dean, Medical School and Vice President for Health Sciences

Robert Englander, M.D., M.P.H.

Associate Dean for Undergraduate Medical Education

ACKNOWLEDGEMENT OF MEDICAL STUDENT AWARDS

Mark E. Rosenberg, M.D., Vice Dean for Education

CLASS OF 1966

Kathleen K. Simo, M.D., Class of 1966 Representative

Louise A. Town, M.D., Class of 1966 Representative

KEYNOTE SPEAKER

Michael J. Collins, M.D., Author of *Blue Collar*, *Blue Scrubs* and *Hot Lights, Cold Steel*

CONFERRING OF DEGREES

Linda A. Cohen, Ph.D., University of Minnesota Board of Regents

PRESENTATION OF THE CLASS OF 2016

John S. Andrews, M.D., Associate Dean for Graduate Medical Education

Bryce A. Binstadt, M.D., Ph.D., Associate Director, Medical Scientist Training Program

Brooks Jackson, M.D., M.B.A. Dean, Medical School and Vice President for Health Sciences

Alan M. Johns, M.D., M.Ed., Associate Dean for Medical Education, Curriculum, and Technology, Duluth

Michael H. Kim, M.D., Assistant Dean for Student Affairs

Robin L. Michaels, Ph.D., Associate Dean for Student Affairs and Admissions, Duluth

Dimple Patel, M.S., Associate Dean for Admissions

Anne G. Pereira, M.D., M.P.H., Assistant Dean for Clinical Education

Yoji Shimizu, Ph.D., Director, Medical Scientist Training Program

M. Thomas Stillman, M.D., Professor, Medicine

Paula M. Termuhlen, M.D., Regional Campus Dean, Duluth

Ruth E. Westra, D.O., M.P.H., Chair and Associate Professor, Family Medicine/Community Health, Duluth

CLASS RESPONSE

Angela L. Volkert, M.D., Class of 2016 President

MINNESOTA MEDICAL ALUMNI SOCIETY

Martin J. Stillman, M.D., J.D., President, Medical Alumni Society

OATH & FINAL REMARKS

Robert Englander, M.D., M.P.H., Associate Dean for Undergraduate Medical Education

4:00 p.m. **RECESSIONAL** - (Please remain seated for recessional.)

DIGNITARIES ON STAGE

John S. Andrews, M.D.....	Associate Dean for Graduate Medical Education
Bryce A. Binstadt, M.D., Ph.D.....	Associate Director, Medical Scientist Training Program
Linda A. Cohen, Ph.D.....	University of Minnesota Board of Regents
Michael J. Collins, M.D.....	Author of <i>Blue Collar</i> , <i>Blue Scrubs</i> and <i>Hot Lights, Cold Steel</i>
Robert Englander, M.D., M.P.H.....	Associate Dean for Undergraduate Medical Education
Brooks Jackson, M.D., M.B.A.....	Dean, Medical School & Vice President for Health Sciences
Alan M. Johns, M.D., M.Ed.....	Associate Dean for Medical Education, Curriculum, and Technology, Duluth
Michael H. Kim, M.D.....	Assistant Dean for Student Affairs
Robin L. Michaels, Ph.D.....	Associate Dean for Student Affairs and Admissions, Duluth
Dimple Patel, M.S.....	Associate Dean for Admissions
Anne G. Pereira, M.D., M.P.H.....	Assistant Dean for Clinical Education
Mark E. Rosenberg, M.D.....	Vice Dean for Education, Medical School
Yoji Shimizu, Ph.D.....	Director, Medical Scientist Training Program
Kathleen K. Simo, M.D.....	Class of 1966 Representative
Martin J. Stillman, M.D., J.D.....	President, Medical Alumni Society
M. Thomas Stillman, M.D.....	Professor, Medicine
Paula M. Termuhlen, M.D.....	Regional Campus Dean, Duluth
Louise A. Town, M.D.....	Class of 1966 Representative
Ruth E. Westra, D.O., M.P.H.....	Chair and Associate Professor, Family Medicine/Community Health, Duluth

OATH FOR NEW PHYSICIANS

The Oath for New Physicians, as edited/compiled by Stewart Decker, M.D., Class of 2014

In the tradition of Hippocrates and the men and women through the ages who have dedicated their lives to the art and science of medicine, I make the following pledge:

The respect and dignity of patients and the confidential nature of our relationship are foremost in my service to them. I will value their lives as I value my own.

I will be humble. I acknowledge my limitations and need for continued education. I will seek the knowledge and inspiration of my colleagues, friends, and patients.

I will honor the wishes and needs of those who seek my assistance, recognizing that death is not always an enemy. I will do no harm.

I will strive always to improve the practice of medicine, to provide a level of care that is ethical, moral, and just. I expect the same standards from my colleagues and will not tolerate their indifference, greed, or unethical behavior.

My profession is an honored one. I will not violate the trust society has placed in me by allowing disease, disability, creed, gender, race, sexual orientation, social standing or any other factor to affect my judgment or ability to care for patients.

I shall do my utmost to provide the vulnerable members of society the care and attention they need to assure their health, dignity, and protection. I will remember that I do not treat a disease, but a sick human being whose illness may affect the person's family and economic stability.

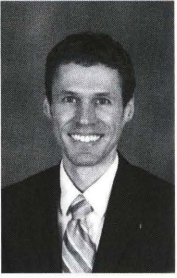
I will remember that there is art to medicine as well as science and that compassion, patience, and understanding are powerful tools of my profession.

I will prevent disease whenever I can, for prevention is preferable to cure.

I will remember that I remain a member of society with special obligations to all my fellow human beings. With this in mind, I dedicate my life to the service of humanity as a whole.

In the presence of my teachers, my family, and my friends, I make these promises solemnly and freely. With this oath I willingly assume the rewards and responsibilities of a physician.

Administered to the Graduating Class of 2016
University of Minnesota Medical School
May 6, 2016



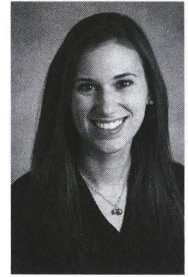
AFTRETH, OWEN P.
Kaiser Foundation Hospital-LA
Urology



ALBRECHT, TIFFANY H.
U Minnesota Med School
Medicine-Pediatrics



ANDERSEN, ASHLEY C.
Tulane Univ SOM-LA
Obstetrics-Gynecology



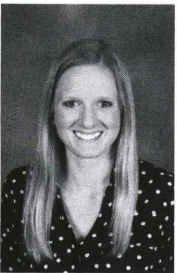
ANDERSON, LEAH C.
U Minnesota Med School
Obstetrics-Gynecology



ANDERSON, MOLLY M.
U Minnesota Med School
Family Med/St Johns



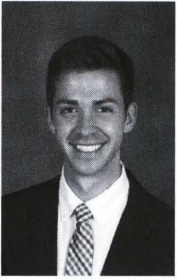
ANTOLICK, ASHLEY A.
Grand Rapids Med Ed Partners-MI
Emergency Medicine



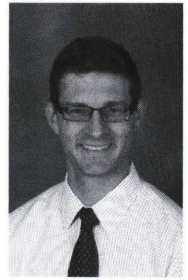
BALFANZ, EMMA E.
Indiana Univ Sch Of Med
Obstetrics-Gynecology



BARKER, EVE
Tacoma Family Med-WA
Family Medicine



BARON, THOMAS R.
U Minnesota Med School
Radiology-Diagnostic



BAUER, NICHOLAS
Naval Medical Center
Transitional



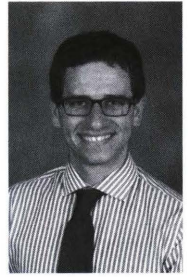
BELETE, HEWAN A.
Northwestern McGaw/NMH/VA-IL
Anesthesiology



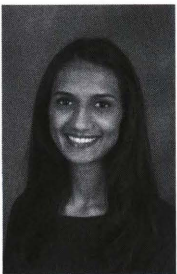
BENNETT, AUDREY L.
Vanderbilt Univ Med Ctr-TN
Internal Medicine



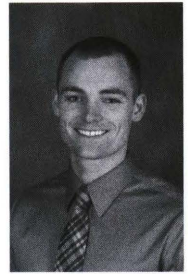
BERGSTRAND, ANN E.
New Hanover Reg Med Ctr-NC
Obstetrics-Gynecology



BERNSTEIN, ETHAN L.
Yale-New Haven Hosp-CT
Internal Medicine



BHATIA, PRERANA M.
UC San Diego Med Ctr-CA
Internal Medicine



BIEWEN, CARTER J.
Childrens Hospital-Oakland-CA
Pediatrics



BOCKOVEN, CRYSTAL G.
Univ of Chicago Med Ctr-IL
Pathology/NorthShore



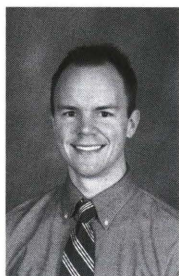
BOYD, ANNE H.
Hennepin Co Med Ctr-MN
Transitional



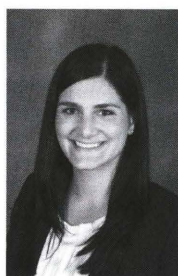
BRADEE, ALLISON R.
University of Nebraska Med Ctr
General Surgery



BROOKMEYER, CLAIRE E.
Johns Hopkins Hosp-MD
Radiology-Diagnostic



CARROLL, PATRICK F.
Mayo School of Grad Med Educ-MN
Radiology-Diagnostic



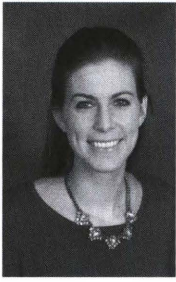
CASNOVSKY, LAUREN L.
U Minnesota Med School
Orthopaedic Surgery



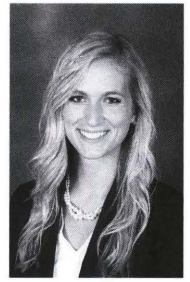
CHAMBERLAND, CREE D.
Mayo School of Grad Med Educ-MN
Pediatrics



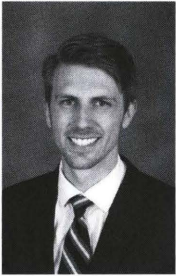
CHENEY-PETERS, DIANNA R.
Thomas Jefferson Univ-PA
Internal Medicine



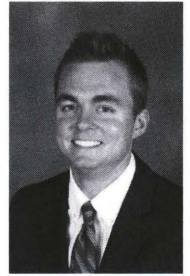
CHRISTOFFEL, KELSEY
Mayo School of Grad Med Educ-MN
Child Neurology



CLARK, LEAH M.
Mayo School of Grad Med Educ-MN
Family Medicine



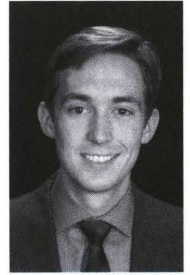
CLELAND, ANDREW J.
LSUHSC-Shreveport-LA
General Surgery



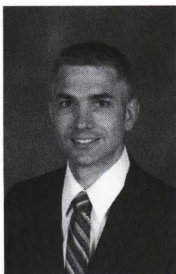
COLBERT, ROBERT W.
Vanderbilt Univ Med Ctr-TN
Internal Medicine



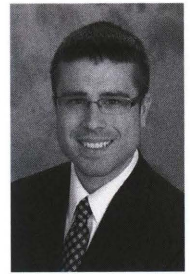
CONBOY, CAITLIN M.
Mayo School of Grad Med Educ-MN
Int Med/CI Research



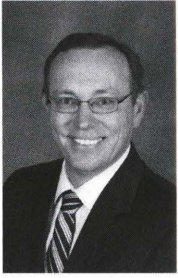
COVINGTON, TRISTAN N.
Mayo School of Grad Med Educ-MN
Radiology-Diagnostic



COX, DANIEL L.
Hennepin Co Med Ctr-MN
Emergency Medicine

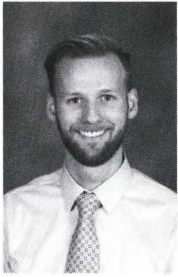
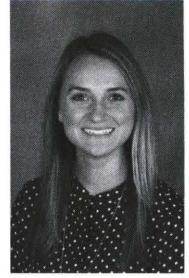


CRAMER, SAMUEL W.
U Minnesota Med School
Neurological Surgery



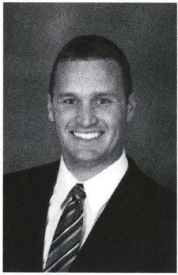
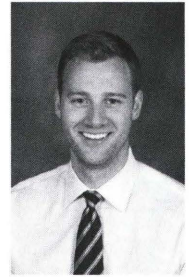
CUNDERLIK, MAROS
Hennepin Co Med Ctr-MN
Medicine-Emergency Med

CUNNINGHAM, GRACE W.
Mayo School of Grad Med Educ-MN
Anesthesiology



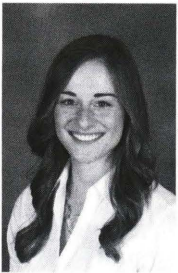
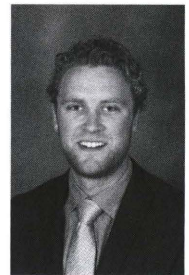
DECKER, DOMINIC P.
Rhode Island Hosp/Brown Univ
Internal Medicine

DECKER, JOSEPH J.
U Minnesota Med School
Internal Medicine



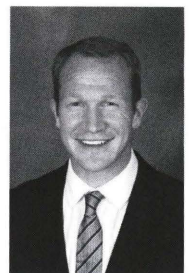
DEGRIO, ARIE J.
HonorHealth-Scottsdale Osborn
Med Ctr-AZ
Family Medicine

DISSE, MAX D.
Hershey Med Ctr/Penn State-PA
Dermatology



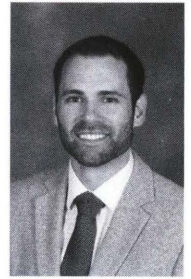
DUININCK, MEGAN J.
U Utah Affil Hospitals
Radiology-Diagnostic

DUTCHER, DANIEL M.
Alameda Health Sys-Highland
Hosp-CA
Internal Medicine

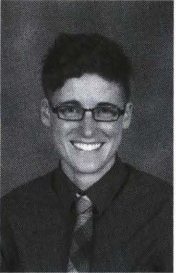




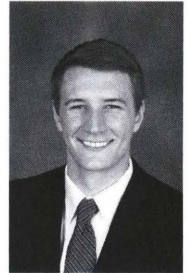
EELKEMA, MELISSA C.
Hennepin Co Med Ctr-MN
Internal Medicine



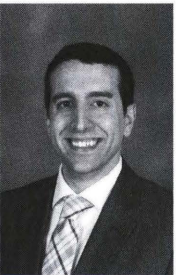
EGGEBRECHT, MATTHEW P.
U Minnesota Med School
Internal Medicine



EHLINGER, E. PEEK
Providence Hospital-AK
Family Medicine



EIDE, JACOB G.
Northwestern McGaw/NMH/VA-IL
Otolaryngology



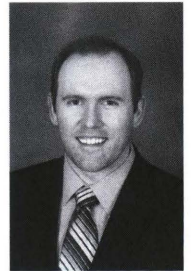
EL HADDI, SALAH J.
U Michigan Hosps-Ann Arbor
Surgery-Preliminary



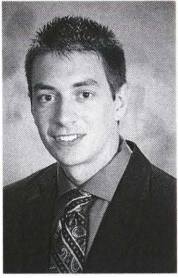
ELLIOTT, ABIGAIL K.
U Minnesota Med School
Family Med/St Josephs



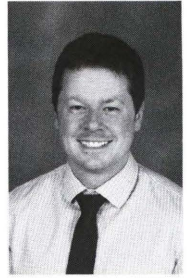
ELM, KENDRA D.
Hennepin Co Med Ctr-MN
Emergency Medicine



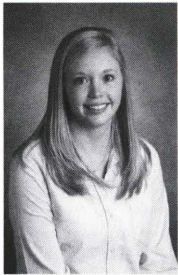
ENGBRETSON, ERIK A.
U Minnesota Med School
Internal Medicine



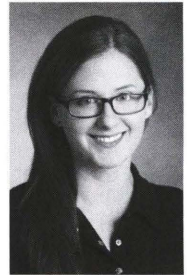
FAHEY-AHRNDT, DONALD J.
U Minnesota Med School
Family Med/St Johns



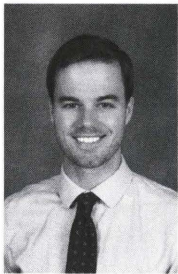
FARLEY, JOSHUA G.
St Joseph Hospital SCL Health-CO
Family Medicine



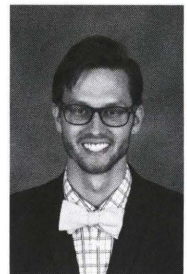
FEIST, ELIZABETH A.
U Minnesota Med School
Family Med/Duluth



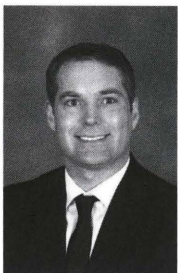
FENNER, DANYELLE R.
St Marys Hospital-CO
Family Medicine



FEWER, THOMAS L.
U Minnesota Med School
Psychiatry



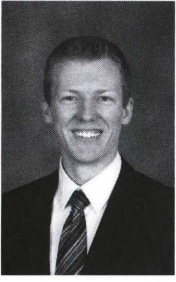
FONDELL, NATHANIEL A.
U Minnesota Med School
Family Med/N Memorial



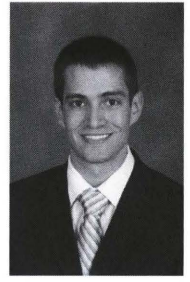
FREDELL, ERIC D.
Hennepin Co Med Ctr-MN
Family Medicine



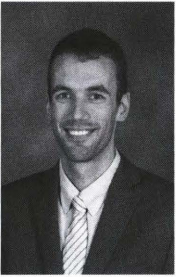
FRISCH, SARAH E.
Altru Health System-ND
Family Med/Grand Forks



FRITZ, ERIK M.



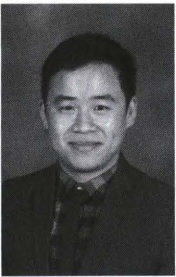
GAJIC, SRĐJAN
UC San Francisco-CA
Internal Medicine



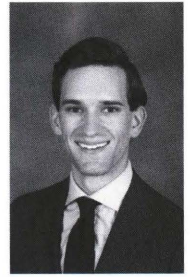
GARRISON, OLIVER F.
HealthPartners Institute/Regions
Hosp-MN
Emergency Medicine



GLATZ, CATHERINE E.
U Rochester/Strong Memorial-NY
Medicine-Pediatrics



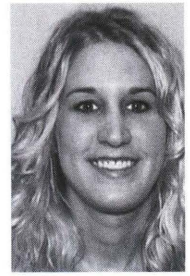
GONG, ZI



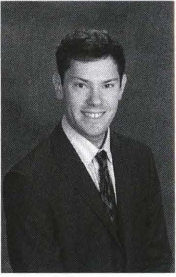
GOODMAN, COLIN D.
U Illinois COM-Chicago
Internal Medicine/UIH



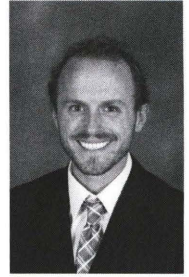
GORECKI, ELIZABETH J.
Mercy Hospital St Louis-MO
Obstetrics-Gynecology



GREGOIRE, ANNA R.F.
Marshfield Clinic-St.Josephs Hosp-WI
Dermatology



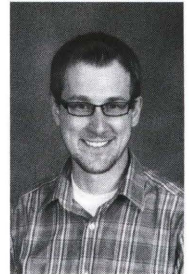
GROSS, GLEN C.
U Minnesota Med School
Radiology-Diagnostic



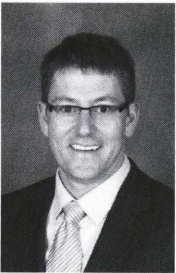
GUIMONT, NATHANIEL P.
Swedish Medical Center-WA
Family Med/Downtown



GURSAHANEY, DORISSA L.
U Colorado SOM-Denver
Radiology-Diagnostic



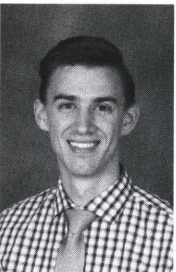
HAMBORG, JOSHUA D.
U Minnesota Med School
Radiology-Diagnostic



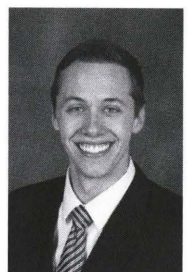
HANHAN, E. TOLGA
U Minnesota Med School
Family Med/Duluth



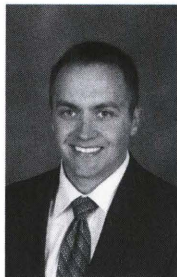
HANSON, JAMIE L.
U Minnesota Med School
Dermatology



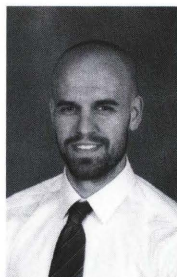
HARKINS, ANDREW R.
Stanford Univ Progs-CA
Pediatrics



HARRELL, ALAN D.
Northwestern McGaw/NMH/VA-IL
Radiology-Diagnostic



HAUSCHILD, JORDAN P.
San Antonio Military Medical Center
Orthopaedic Surgery



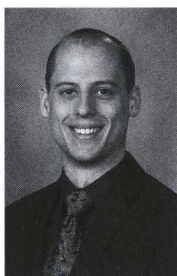
HAYES, MICHAEL R.
U Minnesota Med School
Neurology



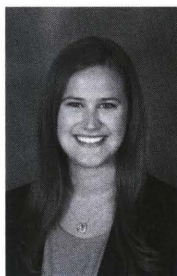
HEGLAND, ROBYN I.
U Minnesota Med School
Family Med/St Josephs



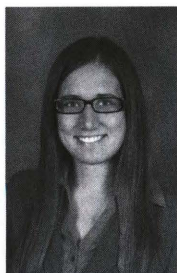
HESS, KALLIA A.
U Minnesota Med School
Pediatrics



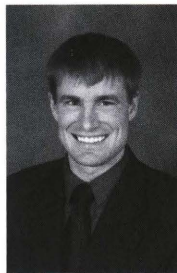
HEVESI, MARIO
Mayo School of Grad Med Educ-MN
Orthopaedic Surgery



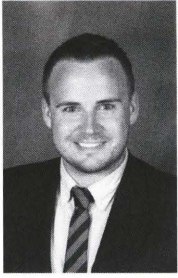
HILL, SIRI M.
Christiana Care-DE
Obstetrics-Gynecology



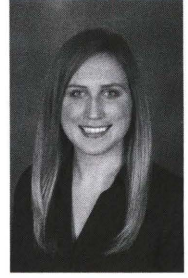
HINDERAKER, KATIE E.
U Minnesota Med School
Family Med/St Josephs



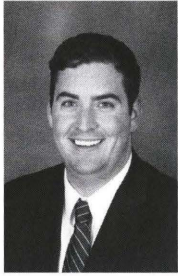
HOKANSON, JOHN D.
U Minnesota Med School
Family Med/St. Cloud



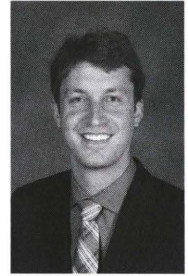
HOLEN, BARRETT K.
George Washington Univ-DC
Internal Medicine



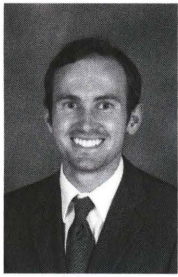
HOLTEN, KATHERINE A.
Abbott Northwestern-MN
Internal Medicine



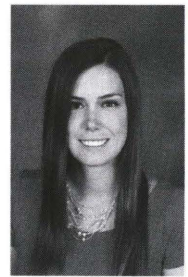
HOLTON, RYAN S.
Christiana Care-DE
Medicine-Pediatrics



HOSFIELD, BRIAN D.
Indiana Univ Sch Of Med
General Surgery



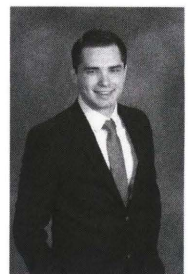
HOVERSTEN, PATRICK S.
Mayo School of Grad Med Educ-MN
Internal Medicine



HOWELL, KATHRYN N.
Nationwide Childrens Hosp-OH
Pediatrics-Primary



HOYUM, SUSAN G.
U North Dakota SOM
Family Med/Bismarck



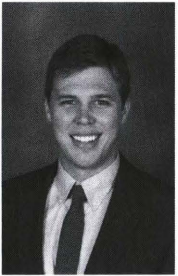
HUSKIC, ARNES
Baylor Univ Med Ctr-Dallas-TX
General Surgery



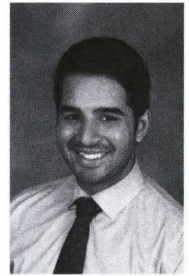
HUTTLIN, EILEEN A.
Cambridge Health Alliance-MA
Psychiatry



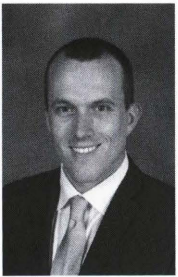
IRELAND, KATHLEEN F.
U Wisconsin Hospital and Clinics
Obstetrics-Gynecology



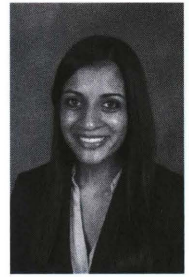
JAEGER, MICHAEL D.
Hennepin Co Med Ctr-MN
Internal Medicine



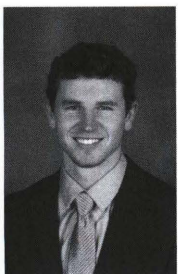
JAFFER, SHAHIDALI N.
U Rochester/Strong Memorial-NY
Internal Medicine



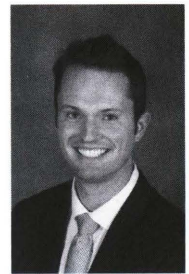
JAMES, EVAN W.
Hosp For Special Surg-NY
Orthopaedic Surgery



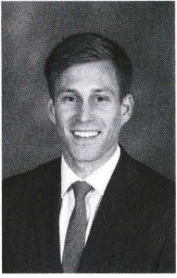
JANARDAN, SANYUKTA K.
Yale-New Haven Hosp-CT
Pediatrics



JANZEN, MATTHEW J.
Tufts Medical Center-MA
Phys Medicine & Rehab



JENSEN, JOSEPH C.
Abbott Northwestern-MN
Internal Medicine



JEPSON, BRYAN M.
U Minnesota Med School
Pediatrics



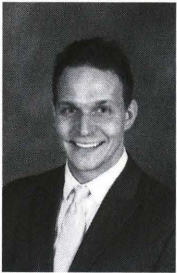
JOHNG, SANDY S.
UC San Francisco-CA
Pediatrics



JOHNSON, AMANDA K.
Duke Univ Med Ctr-NC
Pediatrics



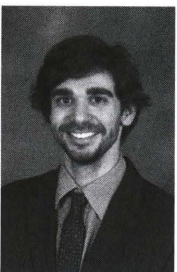
JOHNSON, EMILY M.
La Crosse-Mayo-WI
Family Medicine



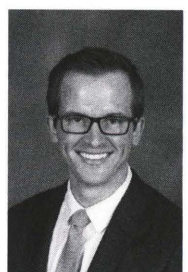
KALINOSKI, MICHAEL T.
Legacy Emanuel/Good Samaritan-OR
Internal Medicine



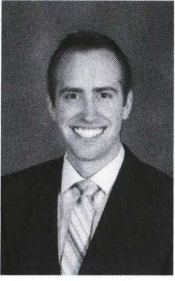
KELSEY, JOHN G.
Harbor-UCLA Med Ctr-CA
Neurology - Categorical



KITTELESON, CARTER W.
UC Davis Med Ctr-CA
Phys Medicine & Rehab



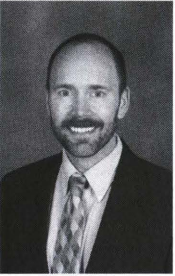
KLIMSTRA, MIKHAIL A.
U Minnesota Med School
Orthopaedic Surgery



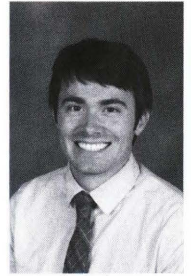
KNUTSON, ANDREW P.
Abbott Northwestern-MN
Internal Medicine



KNUTSON, KARIN B.
U Massachusetts Med School
Obstetrics-Gynecology



KOHN, DAVID F.
U Minnesota Med School
Psychiatry



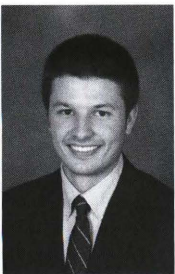
KRAMER, AARON J.
Abbott Northwestern-MN
Internal Medicine



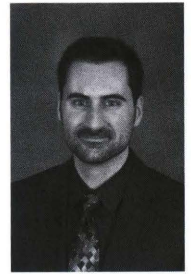
KROLL, BREANN M.
Johns Hopkins Hosp-MD
Emergency Medicine



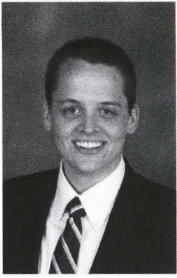
KRUEGER, DANIELLE M.
U Rochester/Strong Memorial-NY
Obstetrics-Gynecology



LABUZ, DANIEL F.
Oregon Health & Science Univ
General Surgery



LADD, BRYAN M.
U Minnesota Med School
Neurological Surgery



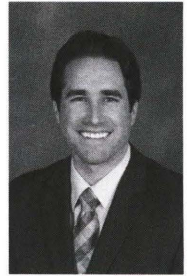
LARSON, DANIEL P.
Mayo School of Grad Med Educ-MN
Path-Anatomic and Clinical



LARSON, PRIYA D.
U Iowa Hosps and Clinics
Psychiatry



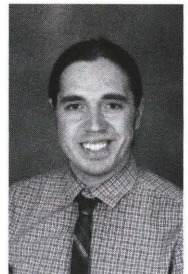
LAW, LINDSEY L.
UCLA Semel Inst for
Neuroscience-CA
Psychiatry



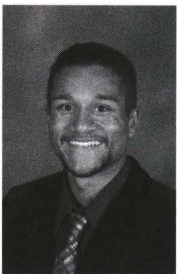
LEAFBLAD, NELS D.
Mayo School of Grad Med Educ-MN
Orthopaedic Surgery



LEHMAN, ALICE C.
U Minnesota Med School
Medicine-Pediatrics



LEONARD, CHRISTOPHER S.
U Minnesota Med School
Family Med/Methodist



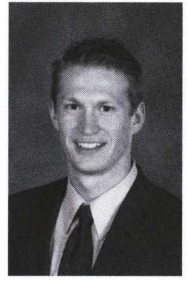
LEWIS, DANNY
Northeast Iowa Med Ed Fdn
Family Medicine



LINDER, GRACE E.
Massachusetts Gen Hosp
Pathology-Anat/Clin or Anat



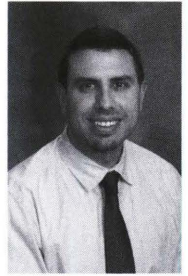
LISTER, JULIA S.
U Rochester/Strong Memorial-NY
Medicine-Pediatrics



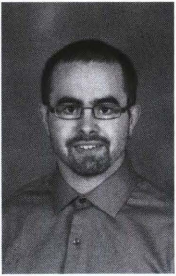
LOCH, SPENCER J.
Abbott Northwestern-MN
Internal Medicine



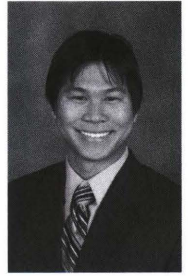
LYFOUNG, HNOUKAJ A.
Baystate Med Ctr-MA
Surgery-Preliminary



MAHMUD, SHAWN A.
U Minnesota Med School
Pediatrics



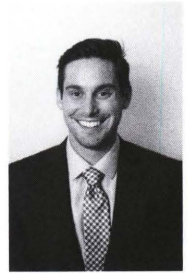
MARVIN, JOSEPH J.
Hershey Med Ctr/Penn State-PA
Family Medicine



MATSUNAGA, MATTHEW C.
U Minnesota Med School
Internal Medicine



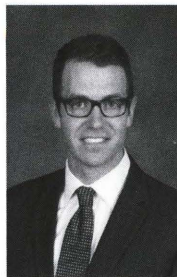
MCDANIEL, ERIC B.



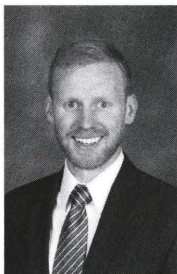
MCFARLAND, RYAN D.
Self Regional Healthcare-SC
Family Medicine



MCFARLAND, SARAH L.
Self Regional Healthcare-SC
Family Medicine



MCHALE, STEPHEN P.
U Kansas SOM-Kansas City
Otolaryngology



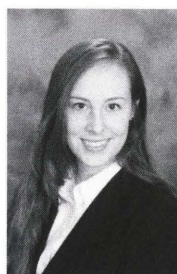
MCPHEETERS, MATTHEW J.
University at Buffalo SOM-NY
Neurological Surgery



MESTER, MELANIE D.
U Oklahoma COM-Tulsa
Pediatrics



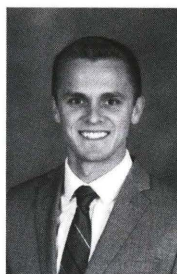
MILLER, JESSE J.
Providence Sacred Heart Med Ctr-WA
Family Medicine



MILLER, KIMBERLY A.
U Minnesota Med School
Otolaryngology



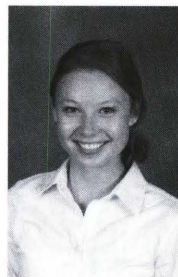
MILLER, WENDY A.
Hennepin Co Med Ctr-MN
Internal Medicine



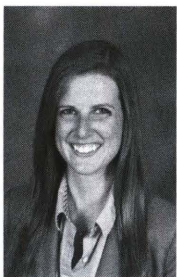
MILLS, ELLIOT G.
U Minnesota Med School
Internal Medicine



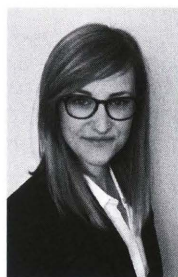
MOEKER, KRISTIN M.
Yale-New Haven Hosp-CT
Pathology/Comb-Anat & Clin



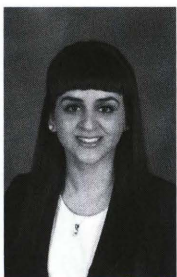
MONTES, GRACE E.
Naval Medical Center
General Surgery



MOORS, COURTNEY E.
Mayo School of Grad Med Educ-MN
Internal Medicine



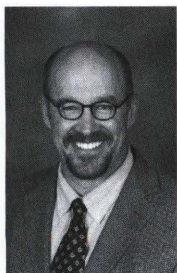
MORSE, CHRISTINA A.
U Washington Affil Hosps
Internal Medicine



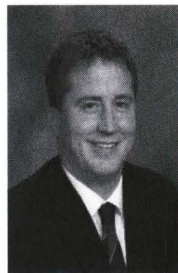
MURPHY, AMANDA J.
Hennepin Co Med Ctr-MN
General Surgery



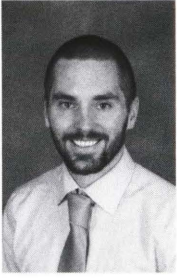
MURPHY, LAURA A.



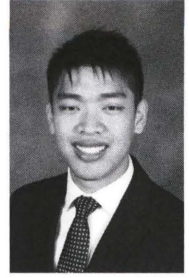
NELSON, MARK L.
U Minnesota Med School
Family Med/N Memorial



NELSON, RYAN W.
Childrens Hospital-Boston-MA
Peds/Childrens Hosp



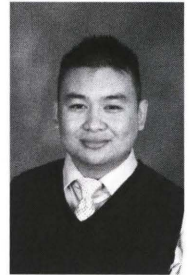
NEVALA-PLAGEMANN,
CHRISTOPHER D.
U Utah Affil Hospitals
Internal Medicine



NG, BRANDON C.
U Minnesota Med School
Family Med/St Josephs



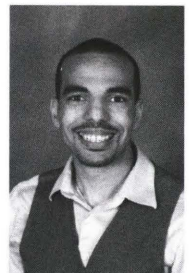
NGO, JUSTINE V.
Kaiser Permanente-Oakland-CA
Pediatrics



NGUYEN, TONY HUY T.
U Minnesota Med School
Family Med/St Johns



NICHOL, HEIDI R.
U Minnesota Med School
Family Med/St Johns



NIMAKO, DANE S.
Allina Fam Res Prog-MN
Family Medicine



OHDEN, KAITLYN L.
Loma Linda University
Ophthalmology



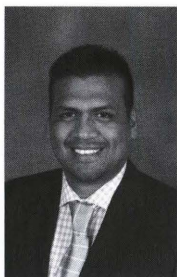
OLAYIWOLA, OLUWATOBI F.



OLEN, JESSICA M.
U Minnesota Med School
Family Med/Duluth



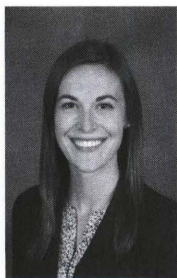
PADHYE, LAURA J.



PALMA-ZAMORA, ISAAC D.



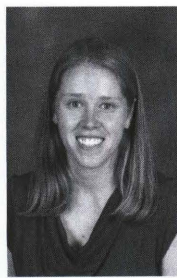
PARKER, SARAH L.
U Minnesota Med School
Internal Medicine



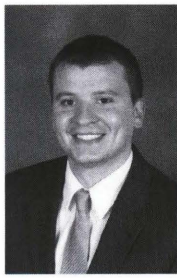
PARR, LAUREN E.
Virginia Commonwealth U Hlth Sys
Psychiatry



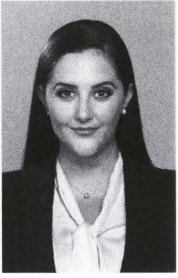
PATEL, ROMA G.
Indiana Univ Sch Of Med
Emergency Medicine



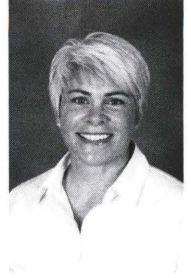
PEARSON, KAIA E.
Providence Hospital-AK
Family Medicine



PERDONI, CHRISTOPHER J.
Eastern VA Med School-VA
Otolaryngology



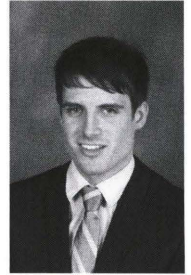
PFLAUM, ALEXA E.
Univ of Vermont Medical Center
Anesthesiology



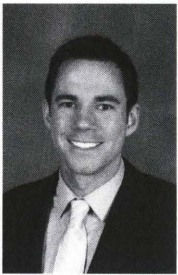
PHILLIPS, ALICIA L.
U Minnesota Med School
Phys Medicine & Rehab



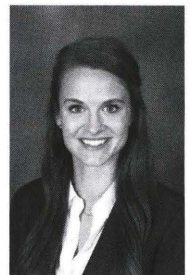
PHIMISTER, ASHLEY N.
U Minnesota Med School
Pediatrics



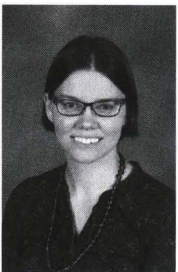
PHIPPS, WILLIAM S.
U Texas Southwestern Med Sch-Dallas
Pathology



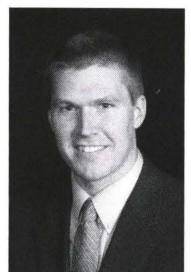
PROBST, DANIEL T.
Barnes-Jewish Hosp-MO
Phys Medicine & Rehab



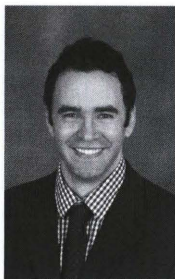
QUALE, MACKENZIE G.
Mayo School of Grad Med Educ-MN
Anesthesiology



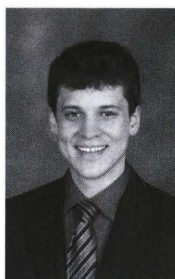
QUIRK, JESSICA L.
Eastern VA Med School-VA
Family Med/Portsmouth



RAISANEN, TOM D.
U Michigan Hosps-Ann Arbor
Dermatology



RAKOFF, DAVID P.
Grand Rapids Med Ed Partners-MI
Obstetrics-Gynecology



REHBEIN, TYLER A.
U Rochester/Strong Memorial-NY
Neurology



REISE, KATHRYN H.
Maricopa Med Ctr-AZ
Ob-Gyn/Phoenix Integ



RETZLAFF, AMBER A.
Med Coll Wisconsin Affil Hosps
Neurological Surgery



RITCHEY ARAYA, STEVEN
Orlando Health-FL
Emergency Medicine



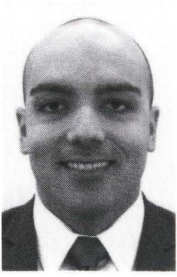
ROBAN, PHILIP K.



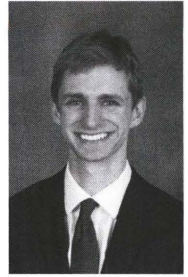
ROGERS, CHARLOTTE M.
Hennepin Co Med Ctr-MN
General Surgery



ROSSOW, JEFFREY K.
SUNY Upstate Med University
Orthopaedic Surgery



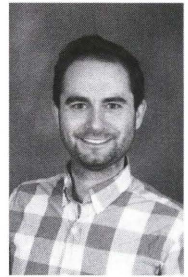
SAN MIGUEL, JOSE E.
U Minnesota Med School
Orthopaedic Surgery



SATZER, DAVID I.
Univ of Chicago Med Ctr-IL
Neurological Surgery



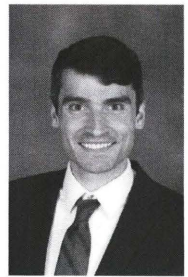
SAUTTER, CASEY L.
University of Nebraska Med Ctr
Obstetrics-Gynecology



SCHENKEL, JASON M.
Brigham & Womens Hosp-MA
Clinical Pathology only



SCHICK, ALEXANDRA L.
Rhode Island Hosp/Brown Univ
Emergency Medicine



SCHNEIDER, BRENTON J.
Hennepin Co Med Ctr-MN
Internal Medicine



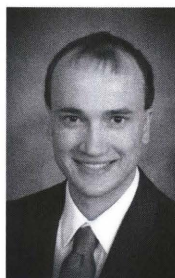
SCHROEDER, SARA A.
HealthPartners Institute/Regions
Hosp-MN
Emergency Medicine



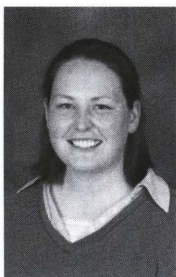
SCHUH, ALLISON R.
Mayo School of Grad Med Educ-MN
Pediatrics



SIBANDA, DAWN N.
U Washington Affil Hosps
Pediatrics-Alaska



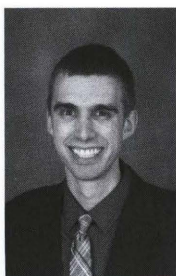
SMITH, MARK D.
Hennepin Co Med Ctr-MN
General Surgery



SMITH, STEPHANIE H.
Barnes-Jewish Hosp-MO
Obstetrics-Gynecology



SPEIER, REBECCA L.
UC Davis Med Ctr-CA
Pediatrics



SPRONK, AUSTIN W.
Sioux Falls Family Med-SD
Family Medicine



STAY, JESSICA L.
U Minnesota Med School
Family Med/Duluth



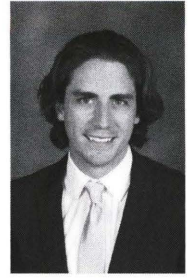
STEFFAN, ANNA T.
U North Carolina Hospitals
Psychiatry



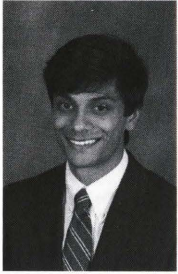
STEIN, ADAM J.
U Minnesota Med School
Surgery-Preliminary



STOCK, ELIZABETH C.
Univ of Chicago Med Ctr-IL
Obstetrics-Gynecology



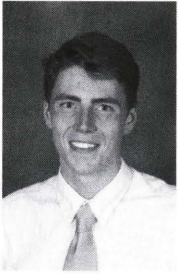
STUTZMAN, MICHAEL J.
Univ of Vermont Medical Center
Internal Medicine



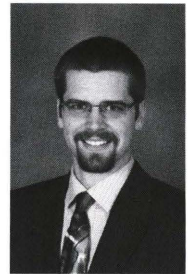
SURESH, SANDIP
U California-LA
Ophthalmology



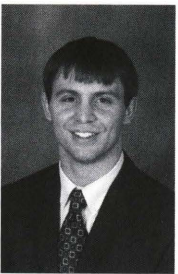
SURY, PRIYA M.
HealthPartners Institute/Regions
Hosp-MN
Emergency Medicine



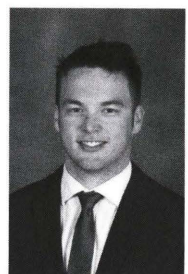
SUSA, JESSE J.
U Minnesota Med School
Family Med/Duluth



SWEDZINSKI, JOSEPH M.
Sioux Falls Family Med-SD
Family Medicine



TAMMINGA, KYLE S.
U North Carolina Hospitals
Family Medicine



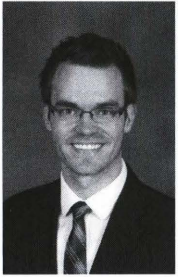
TEMBREULL, JARROD D.
Maine Medical Center
Medicine-Pediatrics



TEO, ALISON A.
Med Coll Wisconsin
Ophthalmology



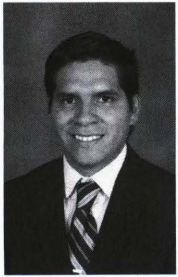
THEISEN STURM, KASEY A.
HealthPartners Institute/Regions
Hosp-MN
Emergency Medicine



THOMAS, PHILIP L.
University of Nebraska Med Ctr
Orthopaedic Surgery



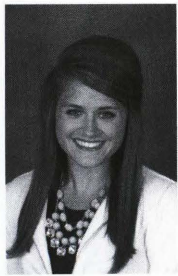
TO, TRINH N.
St Louis Univ SOM-MO
Pediatrics



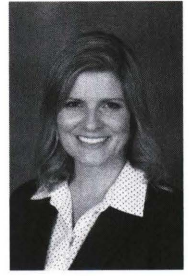
VALENTIN, JOSEPH V.
U Florida COM-Jacksonville
Emergency Medicine



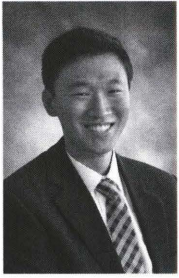
VAN BECK, JENNA V.
U Minnesota Med School
Otolaryngology



VAPLON, BRITTANY K.
U Colorado SOM-Denver
Obstetrics-Gynecology

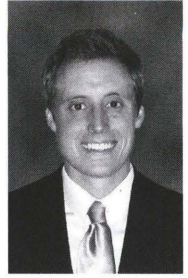


VOLKERT, ANGELA L.
U Arizona COM-Phoenix
Obstetrics-Gynecology



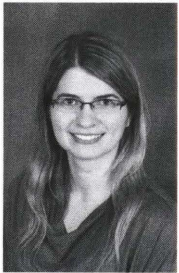
WANG, JUNAO
U Minnesota Med School
Psychiatry

WANKHEDE LANGENFELD,
BRADFORD T.
Hennepin Co Med Ctr-MN
Medicine-Emergency Med



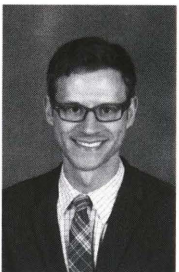
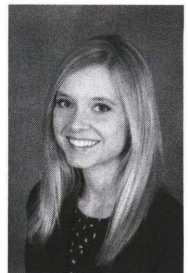
WANKHEDE LANGENFELD,
VANESSA S.
Hennepin Co Med Ctr-MN
Internal Medicine

WEAVER, JESSALYN A.
Hennepin Co Med Ctr-MN
Internal Medicine



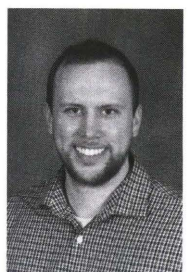
WEEDING, EMMA B.
U Michigan Hosps-Ann Arbor
Internal Medicine

WEIR, KATHERINE P.
Mayo School of Grad Med Educ-MN
Internal Medicine



WELTY, NATHAN E.
Hosp of the Univ of PA
Internal Medicine

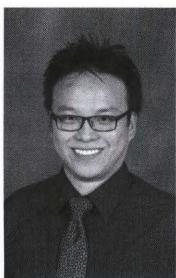
WHITING, JACOB H.
U Iowa Hosps and Clinics
Anesthesiology





WIPPLER, MARIE J.
Wake Forest Baptist Med Ctr-NC
Internal Medicine

WOJCIECHOWSKI, ALYSSA R.
U Michigan Hosps-Ann Arbor
Pediatrics



WONG, ALVIN G.
Indiana Univ Sch Of Med
Internal Medicine

WOO, EMILY N .
U Illinois COM-Chicago
Internal Medicine/UIH



WRZOS, KATARINA L.
U Minnesota Med School
Internal Medicine

YAO, MENGDI
Tufts Medical Center-MA
General Surgery



YUE, RUIXIAN A.
U Cincinnati Med Ctr-OH
Orthopaedic Surgery

YUNGNER, SARA C.
Mayo School of Grad Med Educ-MN
Anesthesiology

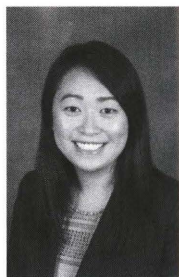




ZARLING, ELYSE M.
 Med Coll Wisconsin Affil Hosps
 Emergency Medicine



ZENG, XUE
 U Texas Southwestern Med
 Sch-Dallas
 General Surgery



ZHANG, LINDSEY M.
 Univ of Chicago Med Ctr-IL
 General Surgery



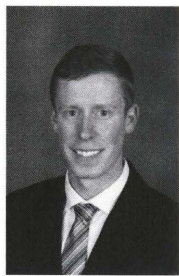
ZHOU, CHENG
 Case Western/MetroHealth Med Ctr-OH
 Medicine-Pediatrics



ZIMMERMAN, REBECCA L.
 Allina Fam Res Prog-MN
 Family Medicine



ZIMMERMAN, RHEANNE K.
 Western Michigan Univ Stryker SOM
 Medicine-Pediatrics



ZOLLER, ISAAC D.
 U Minnesota Med School
 Family Med/Methodist

The University of Minnesota shall provide equal access to and opportunity in its programs, facilities, and employment without regard to race, color, creed, religion, national origin, gender, age, marital status, disability, public assistance status, veteran status, sexual orientation, gender identity, or gender expression.

Students are listed in the program by:

Name
Residency
Specialty

The following students have completed the University of Minnesota Medical School combined M.D./Ph.D. program:

Caitlin M. Conboy
Samuel W. Cramer
Shawn A. Mahmud
Ryan W. Nelson
Jose E. San Miguel
Jason M. Schenkel
Nathan E. Welty

The following students have completed the University of Minnesota Medical School combined M.D./M.P.H. program:

Tiffany H. Albrecht
Ryan D. McFarland
Sarah L. McFarland
Heidi R. Nichol
Marie J. Wippler

The following students have completed the University of Minnesota Medical School combined M.D./M.S. program:

Salah J. El Haddi
Joshua D. Hamborg

The following students have completed the University of Minnesota Medical School combined M.D./M.B.A. program:

Matthew J. McPheeters

This book is not an official record of graduation from the Medical School. The University of Minnesota Board of Regents officially grants the degree of Doctor of Medicine on the date ending the academic semester in which degree requirements are completed, which for Spring Semester of this year will be May 6, 2016.