

Capital Budget Amendment Landscape Arboretum Entry Road and Gatehouse

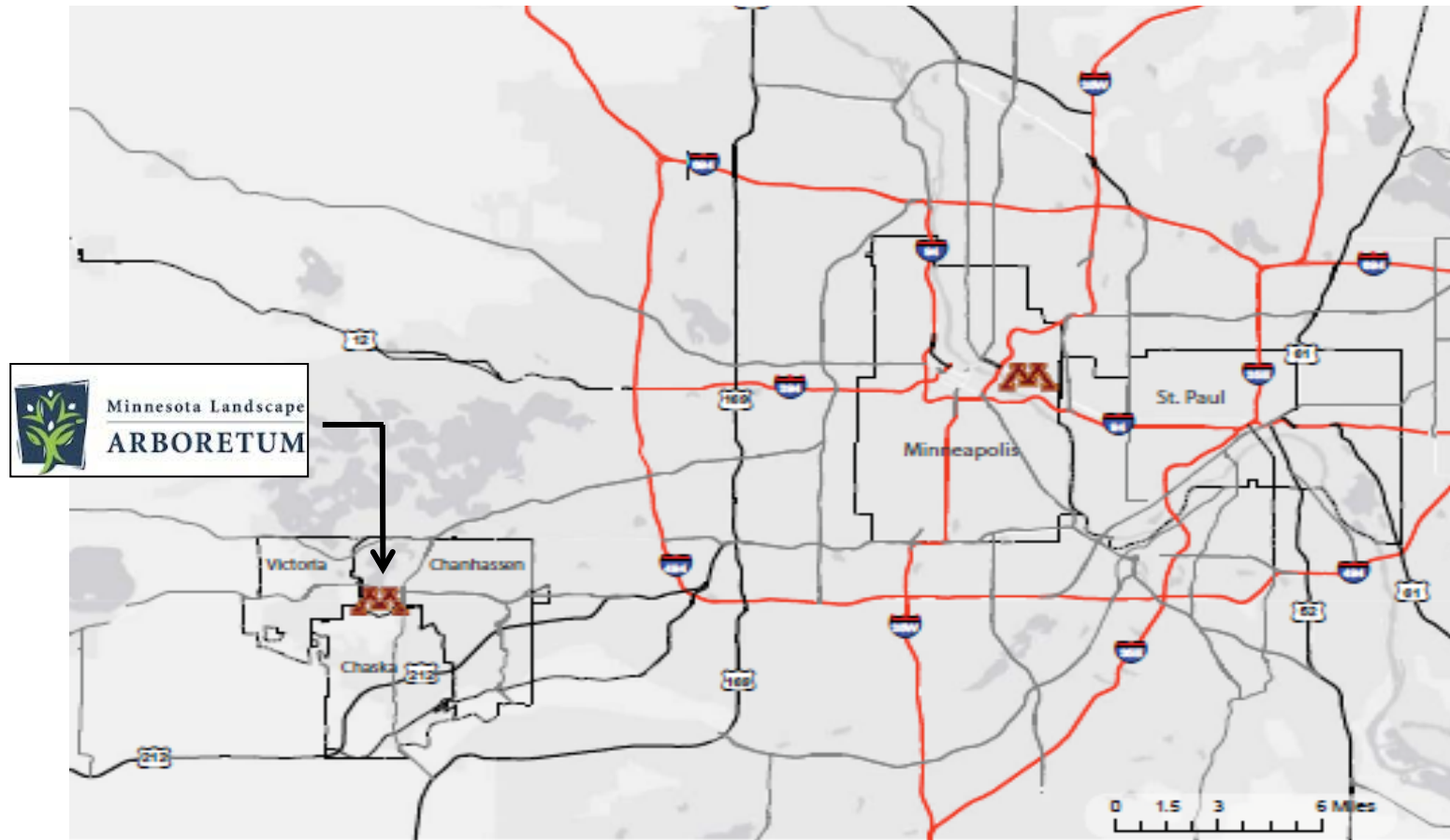
Board of Regents Facilities and Operations Committee
October 10, 2013



UNIVERSITY OF MINNESOTA

Driven to DiscoverSM

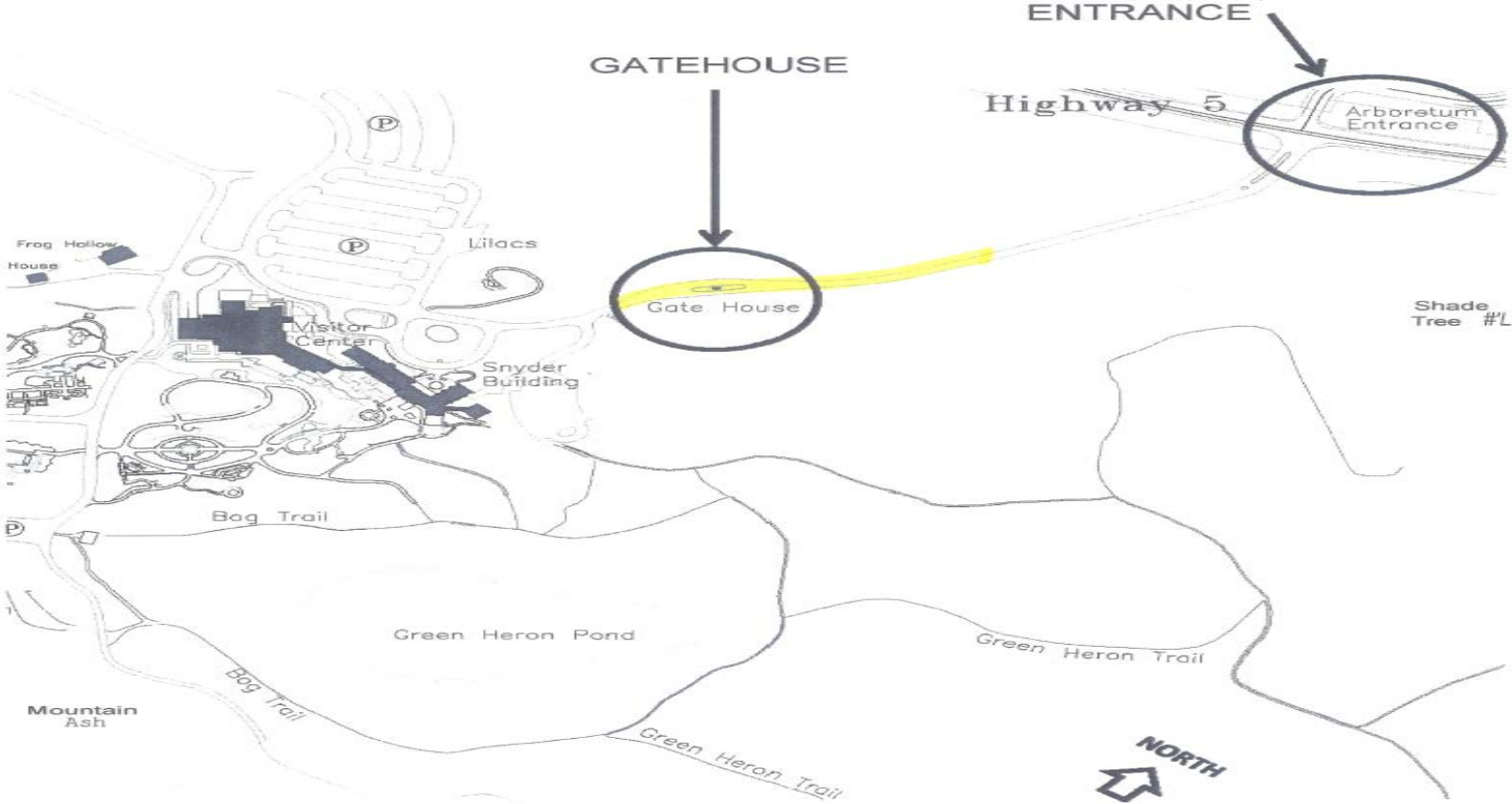
Metro Location Map



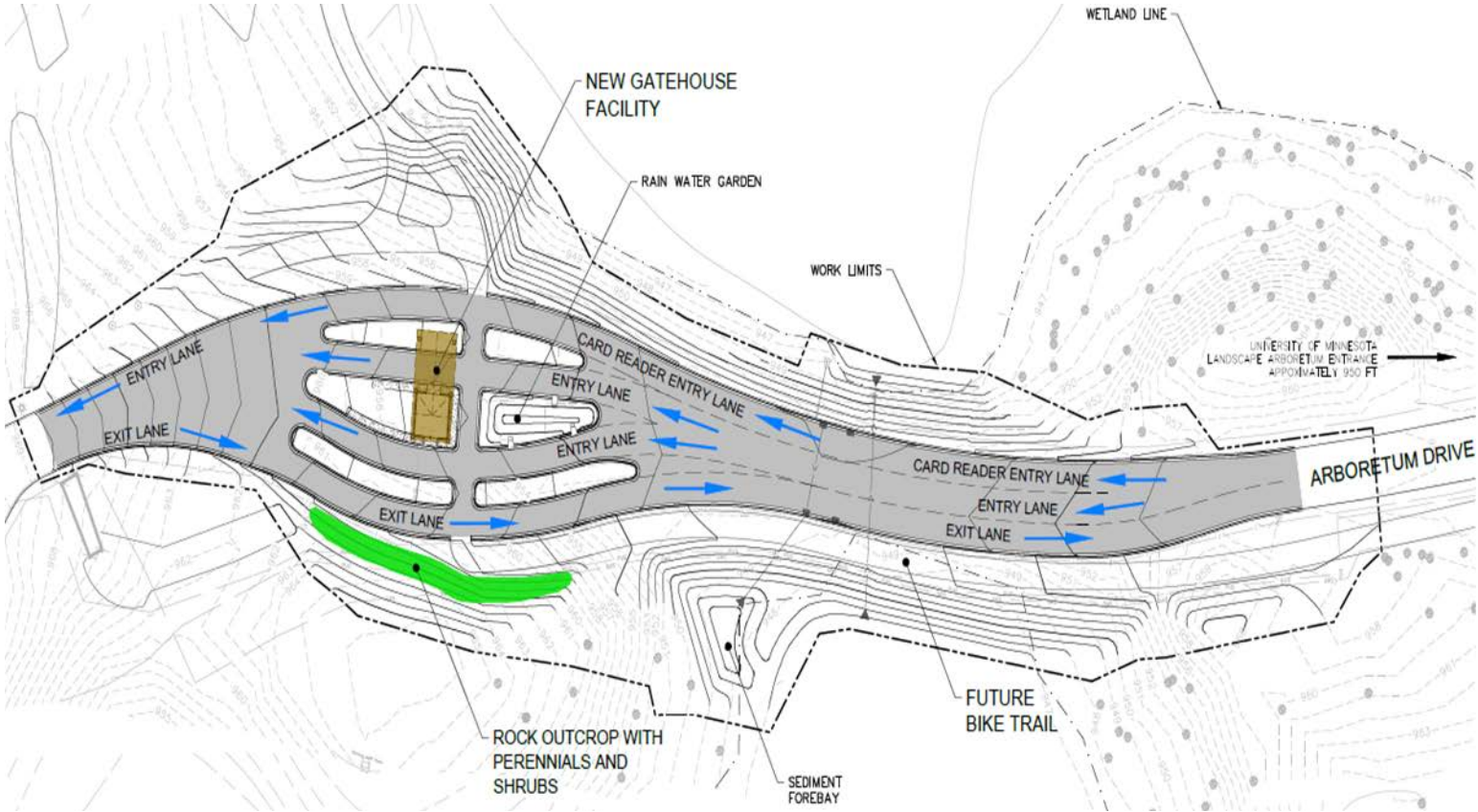
UNIVERSITY OF MINNESOTA

Driven to DiscoverSM

Site Location Map



Site Plan



Project Rationale

- Provide greater physical access to the Arboretum
- Eliminate congestion at the Arboretum entrance
- Expand entry road at gatehouse to eliminate bottlenecks



Project Rationale: Landscape Arboretum Master Plan

- Guiding Principles:

- Maintain Arboretum character and beauty while addressing future program and revenue generation needs
- Provide greater physical access to the arboretum
- Create a clear pedestrian, bicycle, and vehicular circulation system with a hierarchy of trails, roads, and walks



Project Description

- Entry Road and Gatehouse which includes:
 - 500 LF of new road from the Gatehouse toward Highway 5
 - Associated utility relocation
 - New 750 sf gatehouse to accommodate widened entry lanes
 - Two new Customer Service lanes
 - One new lane for members only
 - New card readers



Project Description

- Cost Estimate

– Construction Cost	\$ 760,000
– Non-Construction Cost	<u>128,000</u>
– Total Project Cost	\$ 888,000

- Capital Funding:

– Landscape Arboretum Foundation Capital Fund	\$ <u>888,000</u>
– Total Approved Project Budget	\$ 888,000



Project Description

- Anticipated Completion:
 - June 2014
- Estimated Annual Operating Costs:
 - \$10,000
- Architect:
 - Solution Blue Inc.
- Project Delivery Method:
 - Design Bid Build: To be determined





UNIVERSITY OF MINNESOTA

Driven to DiscoverSM