



UNIVERSITY OF MINNESOTA

---

# Centennial Hall II

# Crookston Campus

# Crookston Campus



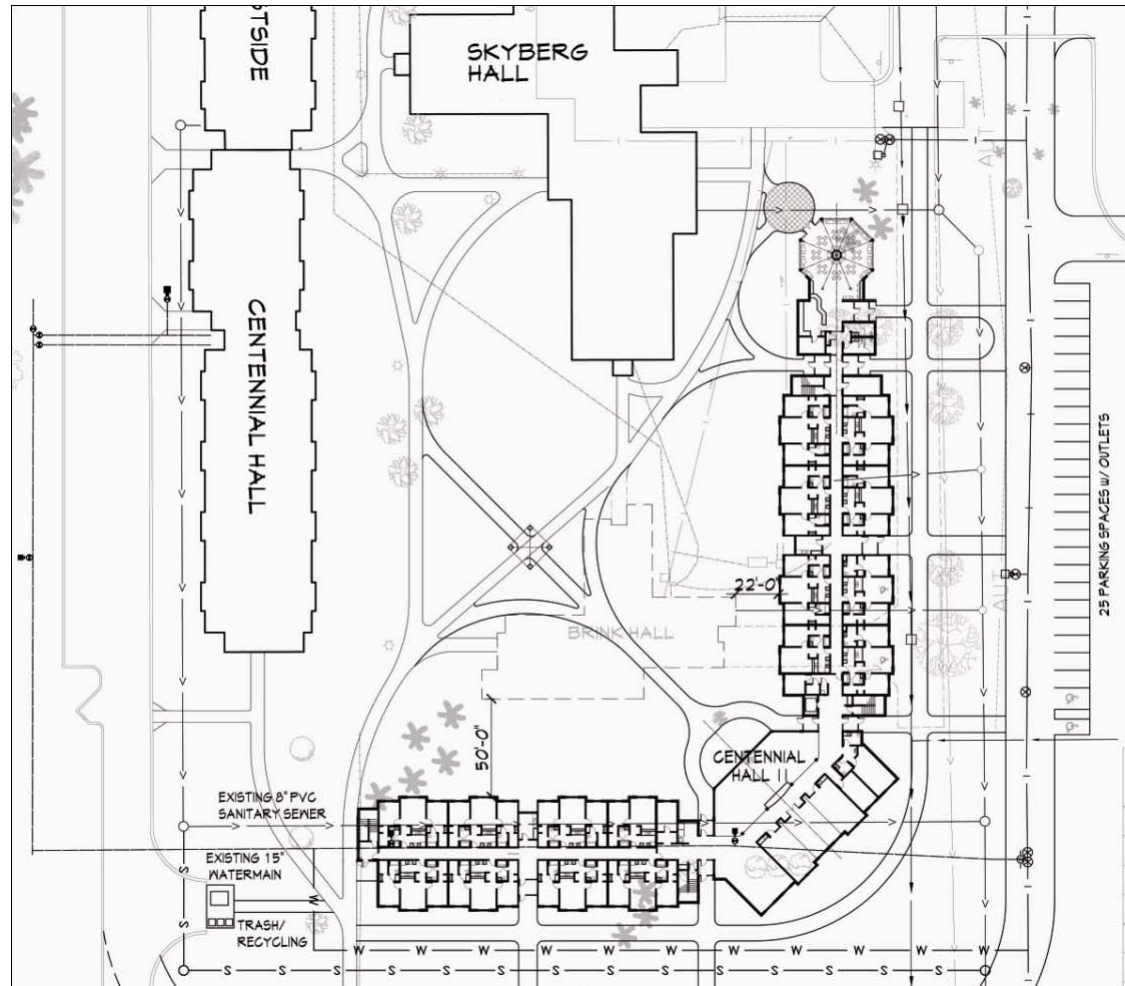
Schematic Plan and  
Capital Budget Amendment

# Location Map



Schematic Plan and  
Capital Budget Amendment

# Site Plan



Schematic Plan and  
Capital Budget Amendment



# Project Rationale

---

- Additional Residential Life Housing is needed
  - Growing student population
  - Enhance student experience with quality on campus housing
  
- Current demand exceeds supply
  
- Eliminate need to house students off campus
  
- Brinks Hall has a limited life

# Project Description

---

- Two-story, 128-bed apartment style facility
  - Two wings: 16 2-bedroom/4-bed units each wing
  - Connecting Link:
    - 1<sup>st</sup> Floor: classroom/seminar, recreation and lounge space
    - 2<sup>nd</sup> Floor: lounge and possibly additional housing
  - Elevator, honor's room, laundry, print center, mechanical space
- Optional one-story auxiliary dining/meeting area – budget contingent
- Exterior material to match adjacent Centennial Hall
- Approximately 53,330 GSF includes 2,730 GFS coffee/dining facility

# Project Description - continued

---

□ Cost Estimate	
■ Construction	\$ 8,700,000
■ Non-construction	<u>1,900,000</u>
■ Total Project Cost	\$10,600,000
□ Capital Funding:	
■ University Debt	<u>\$10,600,000</u>
Total Project Budget	\$10,600,000



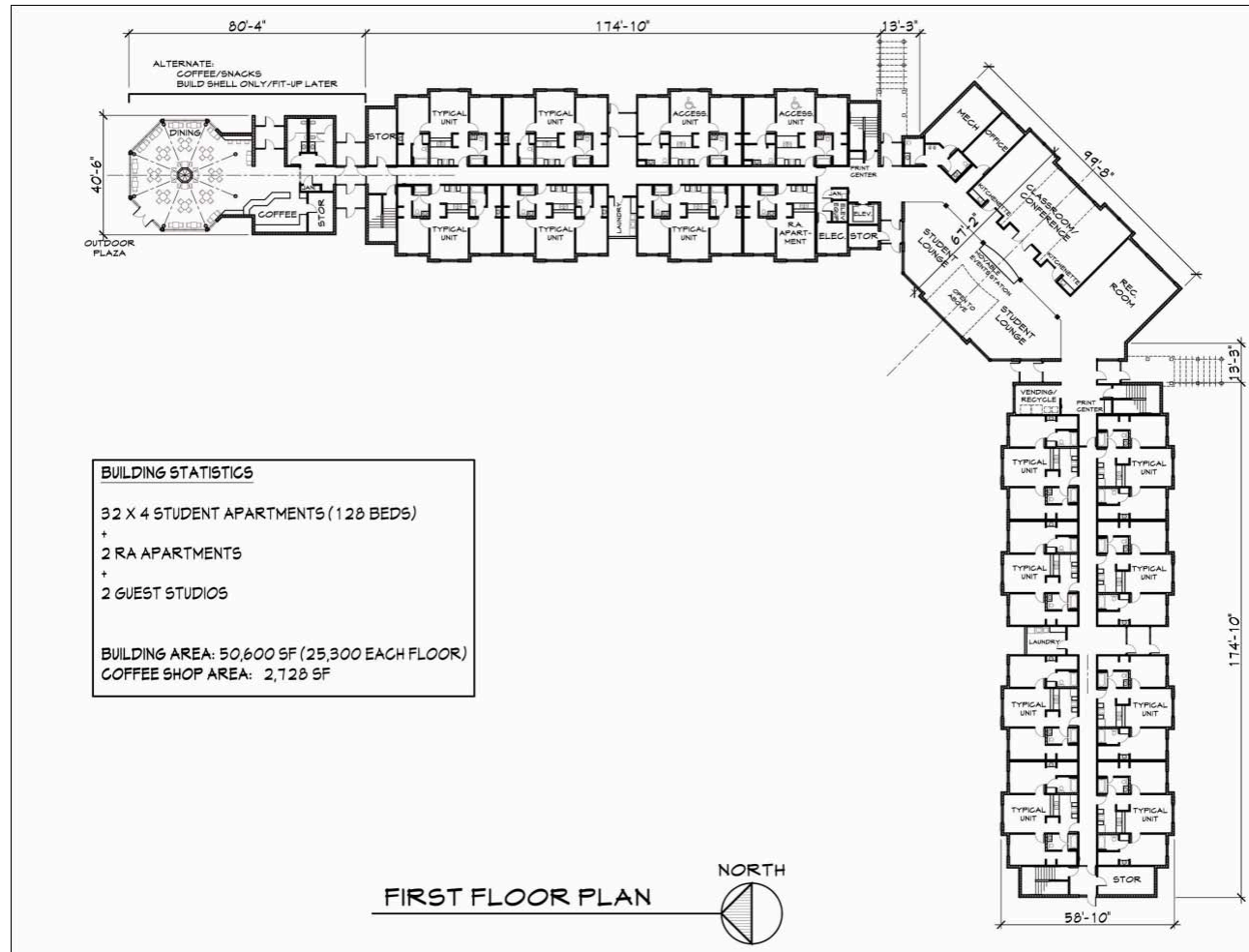
# Project Description - continued

---

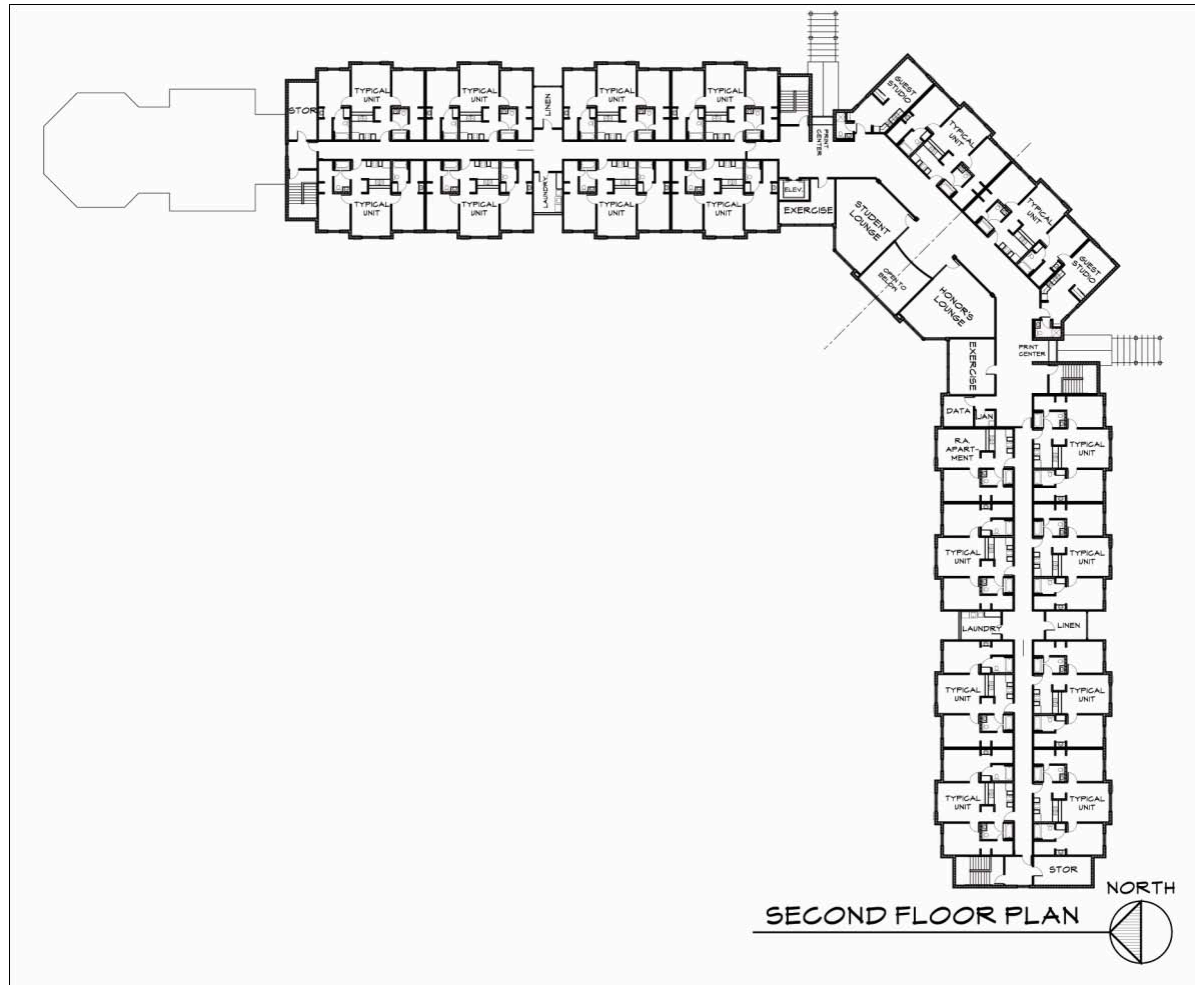
- Anticipated Completion:
  - August 2009
  
- Estimated Annual Operating Costs:
  - \$200,000 funded by Crookston Residential Life
  
- Design Build Project Delivery Method:
  - Community Contractors with Michael J Burns Architects



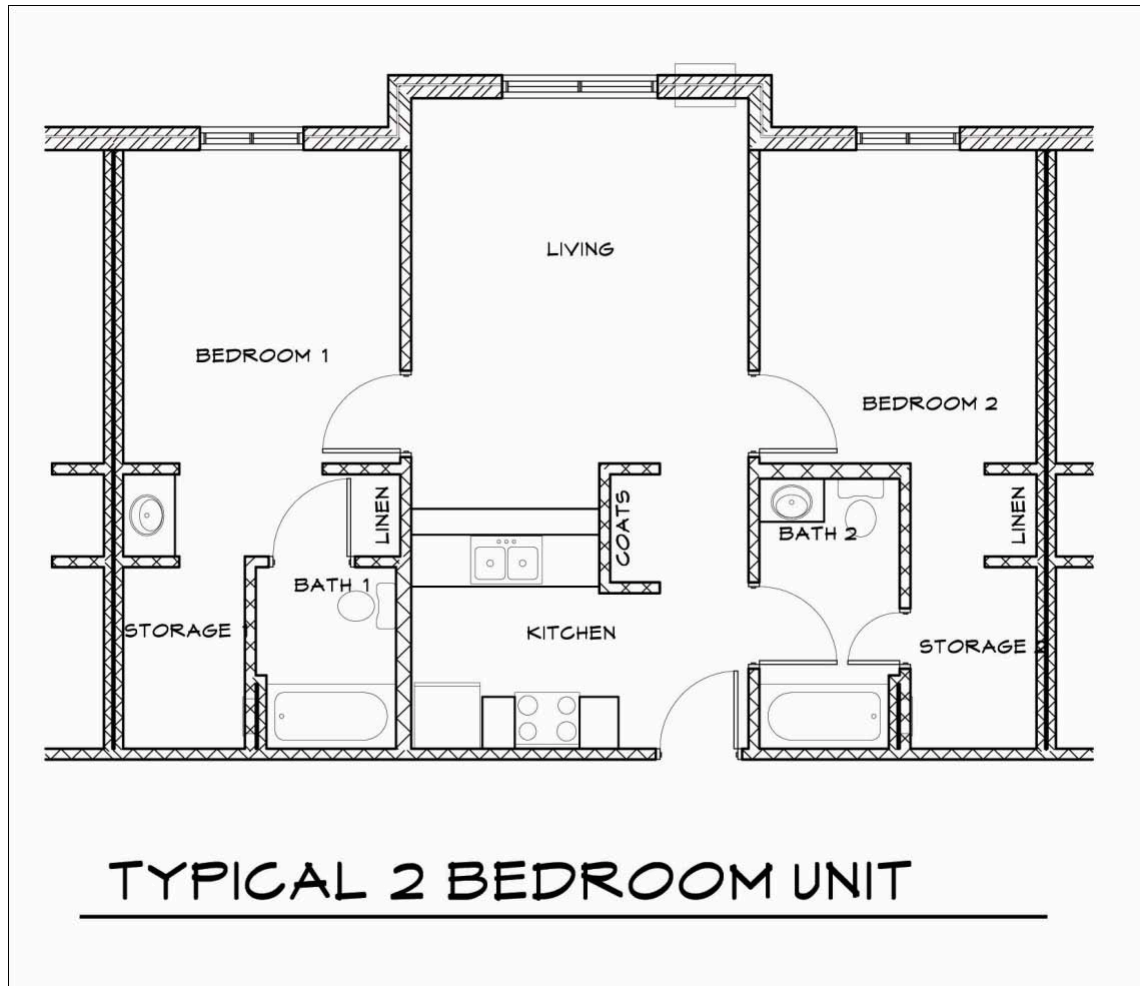
# First Floor Plan



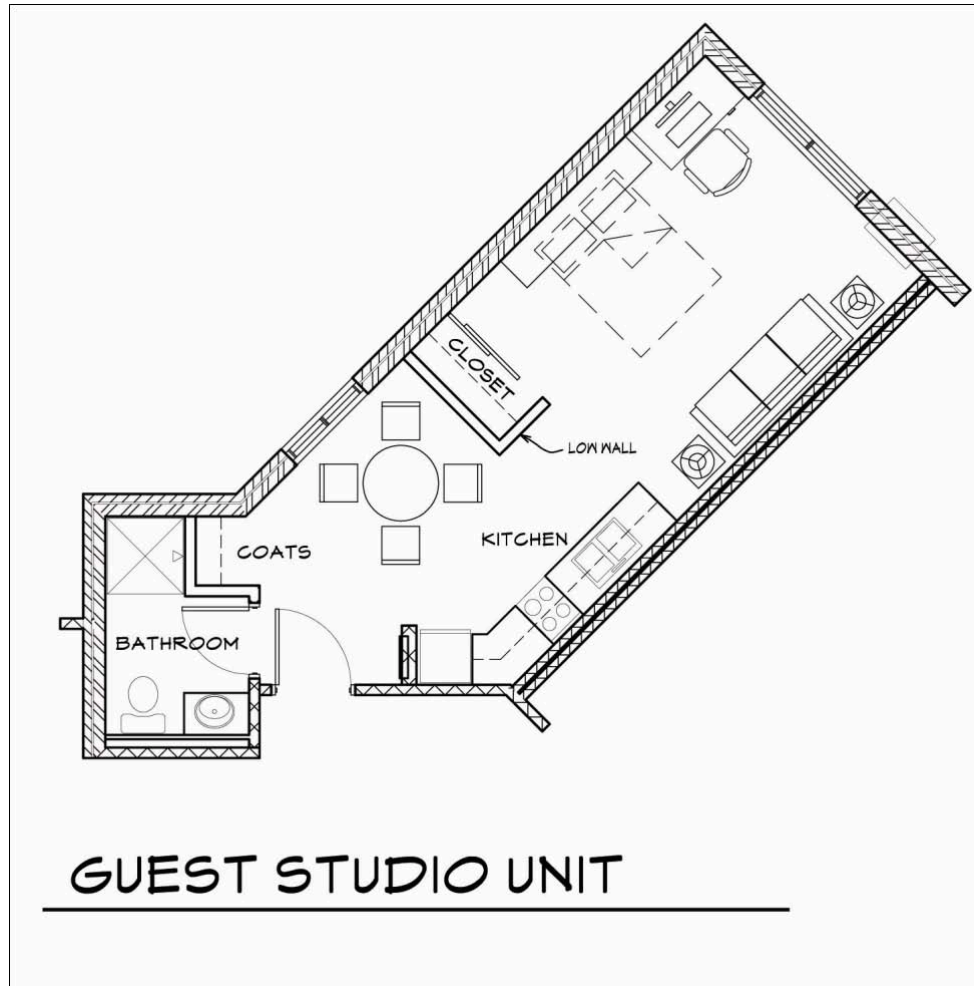
# Second Floor Plan



# Typical Unit



# Guest Studio Unit



# View from Southeast



# View from Southeast (Link)





UNIVERSITY OF MINNESOTA

---

# Centennial Hall II

# Crookston Campus

# Budget Breakdown

---

## □ Budget Breakdown

■ Construction		\$ 8,700,000
■ Non-construction		
□ Design Fees	\$ 500,000	
□ Contingencies	500,000	
□ Furnishing & Equip	650,000	
□ Project Management	200,000	
□ Owner Misc.	<u>50,000</u>	
□ Total	\$1,900,000	<u>1,900,000</u>
■ Total Project Cost		\$10,600,000
■ Approximately \$200 per square foot (53,330 GSF)		