



Updating the Twin Cities Campus Master Plan

**Board of Regents Facilities
Committee**

December 13, 2007



UNIVERSITY OF MINNESOTA

Driven to DiscoverSM

Briefing Objectives

- To inform the Board of Regents as to the University's work to update the Twin Cities Campus Master Plan
- To provide an overview of the structure and process being used to update the plan
- To provide examples of the issues being addressed
- To provide information as to the what we are hearing from the Community regarding our planning efforts



What is a Master Plan?

A Master Plan...

- Ensures the University's academic mission is served by the physical campus;
- Establishes the framework for the long term evolution of the University campus;
- Sets out a vision for the future, which builds upon the existing physical attributes of the campus; and
- Ensures that the unique qualities of the campus will be enhanced and that targeted areas will evolve.



Board of Regents Campus Master Planning Principles – 1993

- Create and maintain a distinctive and inspiring vision for the physical development of each campus
- Enrich the experience of all who come to campus
- Maximize the value of existing physical assets while responding to emerging/changing physical needs
- An inclusive, accountable and timely process for creating and implementing the master plan vision



A Livable Campus: Twin Cities Campus Master Plan

- Approved by Board of Regents July 1996
- Result of a 2-year comprehensive planning process
- Advisory committee of University faculty, staff, and community members
- Master Plan team:
 - Berridge Lewinberg Greenberg Dark Gabor
 - Close Landscape Architecture
 - Glatting Jackson Kercher Anglin Lopez Rinehart
 - Kuwabara Payne McKenna Blumberg Architects



A Livable Campus – Twin Cities Campus Master Plan Guiding Principles

- Instill a genuine sense of community
- Identify, preserve and enhance natural features
- Create a cohesive system of open spaces
- Achieve balanced systems for movement and access
- Promote optimization and rationalization of campus facilities
- Increase the mix of uses on the campus, including housing



Guiding Principles (continued)

- Develop connections
- Foster accessibility and a sense of safety and security
- Promote architectural integrity
- Preserve historic buildings and landscapes
- Facilitate and ensure healthy collaborative ventures



Precinct Plans

- Minneapolis
 - The Mississippi River Corridor
 - West Bank North of Washington
 - West Bank South of Washington
 - The Knoll
 - Northrop Mall
 - South Mall
 - Health Sciences and Housing Superblock
 - Oak and Washington
 - Sports and Recreation
 - Washington Avenue Corridor
- St. Paul
 - Bowl and Ridge
 - The Lawn
 - The Gortner Axis
 - Commonwealth Terrace
 - Agricultural Fields and Greenhouses
 - North of Larpenteur



Charge to the Steering Committee: Update the 1996 Master Plan

- Align and integrate the Master Plan with University core processes such as strategic positioning, academic planning and funding;
- Take full advantage of the major initiatives scheduled for the next decade;
- Focus on “growing a campus” rather than building buildings;
- Instill the principles of sustainability, so that the new plan leaves the campus better for future students, staff, and faculty;
- Optimize the distinction of being the largest research University that bridges the Mississippi River;
- Increase ownership of the Master Plan by the University community, and ensure broad and meaningful consultation with key constituencies.



Master Plan Steering Committee Membership

- Judith Martin, Professor, Geography & Urban Studies, Co-Chair
- Kathleen O'Brien, Vice President, University Services, Co-Chair
- Sheila Ards, Assoc. Vice President for Community Partnerships & Development
- Terry Bock, Assoc. Vice President, AHC
- Beverly Durgan, Dean & Director, Extension Service
- Art Erdman, Professor, Mechanical Engineering
- Missy Gettel, Minnesota Student Association
- Denise Guerin, Professor, Design, Housing and Apparel
- Bob Johns, Director, Center for Transportation Studies
- Kristi Kremers, GAPSA representative
- Bob Kvavik, Assoc. Vice President, Office of Planning
- David Levinson, Associate Professor, Civil Engineering
- Orlyn Miller, Director, Planning & Architecture
- Lance Neckar, , Interim Director, Metro Design Center, & Professor, Landscape Architecture
- Jerry Rinehart, Vice Provost, Student Affairs
- Becky Yust, Professor & Dept. Head, Design, Hsg & Apparel
- Leslie Krueger, Chief of Staff, University Services, Staff to Committee



Five Issue-based Work Teams

- Enhancing the Campus
- Natural Features and Open Spaces
- Movement and Access
- Community Connections, Collaborative Ventures & Safety
- Design and Preservation



Overarching questions for each team to address

- How do we enhance the learning environment through each of the guiding principles?
- How do we align the guiding principles with the University's Strategic Positioning efforts?
- How should sustainability principles be incorporated into each of the work team's efforts?
- What benchmarks (data) should we use to inform our work?
- How will technology impact each of the guiding principles?
- How do we ensure that the updated plan can be better operationalized?
- How should we memorialize support for spaces and systems that work on campus?



Enhancing the Campus

- Co-Chairs

- Denise Guerin
- Jerry Rinehart

- Guiding Principles

- Instill a genuine sense of community
- Promote optimization & rationalization of campus facilities
- Increase the mix of uses on campus, including housing



- Issues to be addressed

- Creating sense of community
- Flexible learning and working spaces
- Future space needs
- Optimizing use of space
- Appropriate adjacencies



UNIVERSITY OF MINNESOTA

Driven to DiscoverSM

Natural Features and Open Space

- Co-Chairs
 - Lance Neckar
 - Art Erdman
- Guiding Principles
 - Create a cohesive system of open spaces
 - Identify, preserve and enhance natural features
- Issues to be addressed
 - Sustainable practices to preserve & enhance natural features
 - Storm water management
 - Riverfront development & preservation
 - Agricultural lands
 - Linkages to regional open space systems
 - Protecting and enhancing open spaces



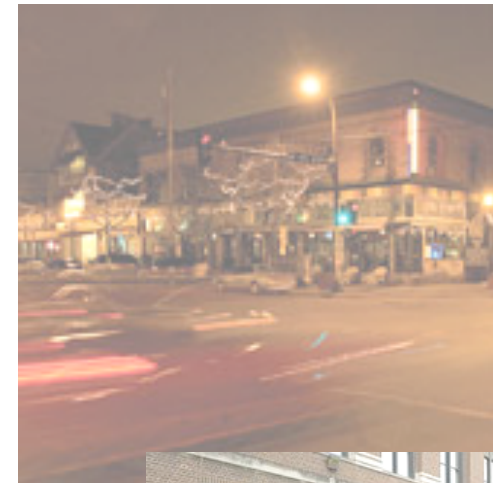
Movement and Access

- Co-Chairs
 - Bob Johns
 - David Levinson
- Guiding Principles
 - Achieve balanced systems for movement and access
- Issues to be addressed
 - Alternative modes of transportation
 - Public transit
 - Impact of Central Corridor LRT
 - Vehicular movement and parking
 - Bicycle paths and storage
 - Pedestrian movement and safety
 - Service access to buildings
 - Signage and way finding



Community Connections, Collaborative Ventures & Safety

- Co-Chairs
 - Becky Yust
 - Sheila Ards
- Guiding Principles
 - Foster accessibility and a sense of safety and security
 - Develop connections
 - Facilitate and ensure healthy collaborative a ventures
- Issues to be addressed
 - Campus edge conditions and gateways
 - Enhancing safety and security – campus and community
 - Integration of the campuses
 - Definition of campus borders
 - Relationship with surrounding community
 - Partnerships with external entities



Design & Preservation

- Co-Chairs
 - Terry Bock
 - Judith Martin
- Guiding Principles
 - Promote architectural integrity
 - Preserve historic buildings and landscapes
- Issues to be addressed
 - Architectural diversity, harmony, and unity
 - Public art on campus
 - Historic preservation
 - Value of historic buildings and landscapes
 - Balance of preservation with functionality and cost



Gathering information

- Campus open forums
- Campus tours
- Listening sessions with surrounding neighborhoods and communities
- Best practices review
- Geological survey
- Open space survey
- Utilities Master Plan
- Traffic modeling



Spring 2007 Campus-wide Open Forums

- Enhancing the campus experience
 - Campus amenities such as gathering and dining spaces
 - Improving the pedestrian experience
 - Opportunities for recreation
- Importance of green space on campus as a sense of place and connector.
 - Need for more on West Bank
 - Amenities in St. Paul
 - Connections to the River
- Sustainability
 - Campus as a living laboratory
 - Energy efficient buildings
 - “Green” operations



Spring 2007 Campus-wide Open Forums (continued)

- Balancing needs of all modes of transportation
 - Pedestrian safety
 - Bike trails, lockers, showers, safe operations
 - Campus bus routes
 - Vehicular access to campus and buildings
- Relationship of U to Community
 - Awareness of impact – positive and negative
 - Support of surrounding communities – K-12
 - Design buildings to be open to community



Spring 2007 Campus-wide Open Forums (continued)

- Campus Design
 - Importance of signature buildings
 - Balance of eclectic design elements with historic campus
 - Enhancing the design of the learning environment – e.g. Windows in classrooms)
 - Need for inviting spaces
 - Importance of public art



Fall 2007 Listening Sessions

- Mutually supportive environments
- Alignment with community vision
- Campus traffic management and use of transportation alternatives
- Pedestrian and bicycle connections to community
- Clear campus boundaries
- Well-marked and attractive gateways



Fall 2007 Listening Sessions (continued)

- Transparent process for planning significant developments
- The communities near campus as a home for U employees and “life long learners”
- How the community connections are operationalized is critical
- Themes specifically related to the Saint Paul campus:
 - Support for sustainability objectives
 - Open space is an important community amenity
 - Importance of signage and interpretation regarding research areas



Master Plan Update Schedule

- February 1, 2007
- Winter – Summer 2007
- Spring 2007
- Summer 2007
- Fall 2007 –Spring 2008
- Spring – Summer 2008
- Fall 2008
- Winter 2008
- Convene work teams;
- Explore issues; consult with stakeholders; refine work plans; review with Steering Committee
- Open Forums
- Staff coordinates work of teams
- Teams continue work as necessary
- Steering Committee pulls work of the teams together into draft update; update Board of Regents
- Final consultation with key constituencies.
- Review with and seek approval of Board of Regents



Next Steps

- Work Teams complete their reports to the steering committee
- Steering Committee Retreat
- Large group or work team members convened
- Board of Regents reviews Historic Preservation Policy
- Draft Plan
- Community consultation
- Review with and seek approval of Board of Regents



Questions?



UNIVERSITY OF MINNESOTA

Driven to DiscoverSM