

Minnesota, University, President's Office.

University of Minnesota
ORGANIZATION CHARTS

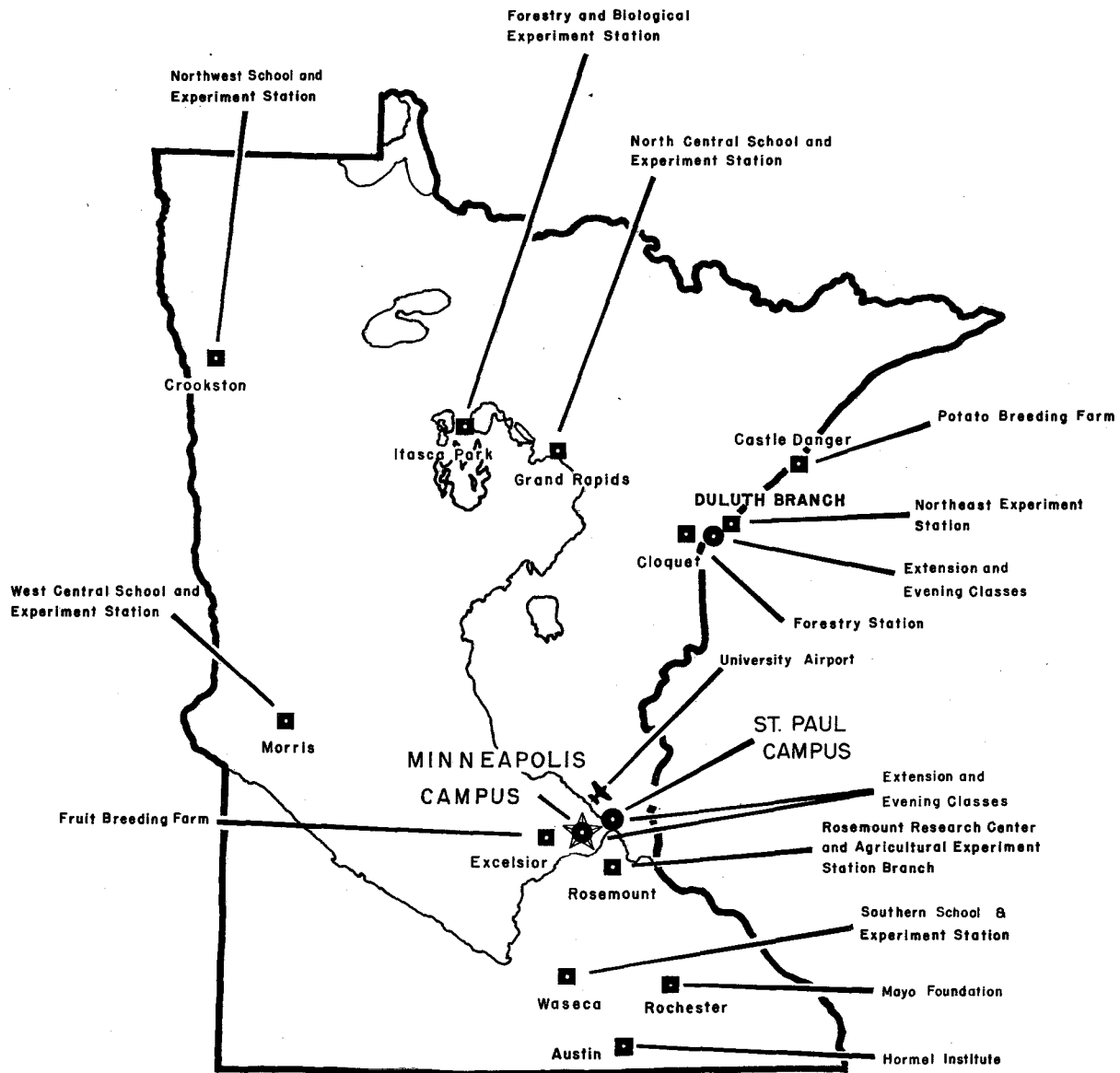


FEBRUARY 16, 1953

INDEX

MAD
Or 3

1. BOARD OF REGENTS
2. GENERAL ORGANIZATION
3. ACADEMIC ADMINISTRATION
4. COLLEGE OF SCIENCE, LITERATURE, AND THE ARTS
5. INSTITUTE OF TECHNOLOGY
6. INSTITUTE OF AGRICULTURE (CHARTS NUMBERED 6, 6A, 6B, 6C, AND 6D)
7. COLLEGE OF MEDICAL SCIENCES
8. COLLEGE OF EDUCATION
9. GRADUATE SCHOOL
10. DULUTH BRANCH
11. GENERAL EXTENSION DIVISION
12. UNATTACHED DEPARTMENTS AND OFFICES
13. BUSINESS ADMINISTRATION
14. COMPTROLLERS' OFFICE
15. PHYSICAL PLANT
16. CIVIL SERVICE PERSONNEL
17. UNIVERSITY SERVICES
18. DORMITORIES AND DINING HALLS
19. PROTECTION AND INVESTIGATION
20. RESEARCH FUNDS - GIFTS AND ENDOWED, BY MAJOR COLLEGE



UNIVERSITY OF MINNESOTA
 PLAN SHOWING LOCATIONS OF
 INSTRUCTIONAL and RESEARCH UNITS

BOARD OF REGENTS*

1007

OFFICERS†

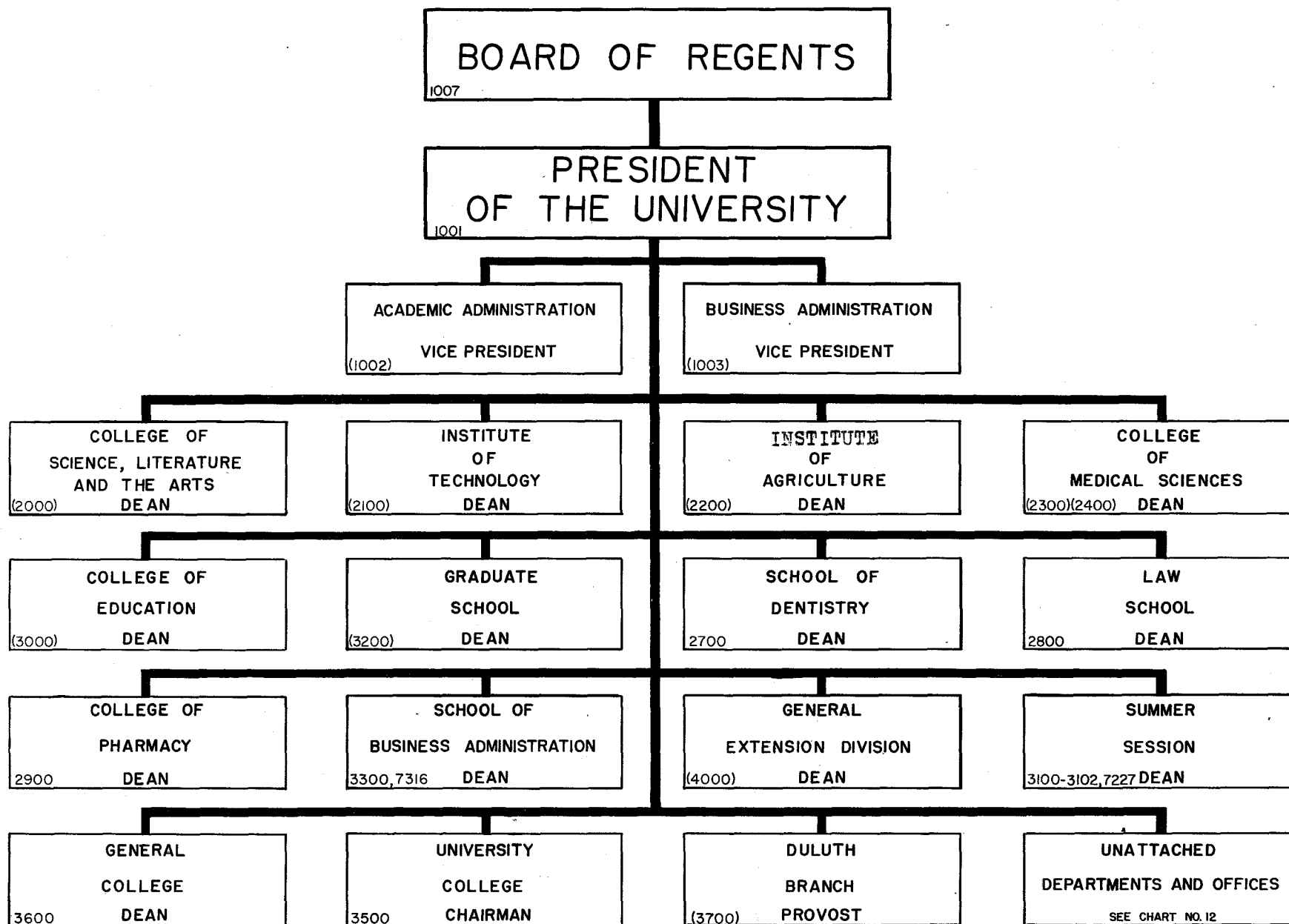
- 1 PRESIDENT
- 2 FIRST VICE PRESIDENT
- 3 SECOND VICE PRESIDENT
- 4 SECRETARY
- 5 ASSISTANT SECRETARY
- 6 TREASURER-1010

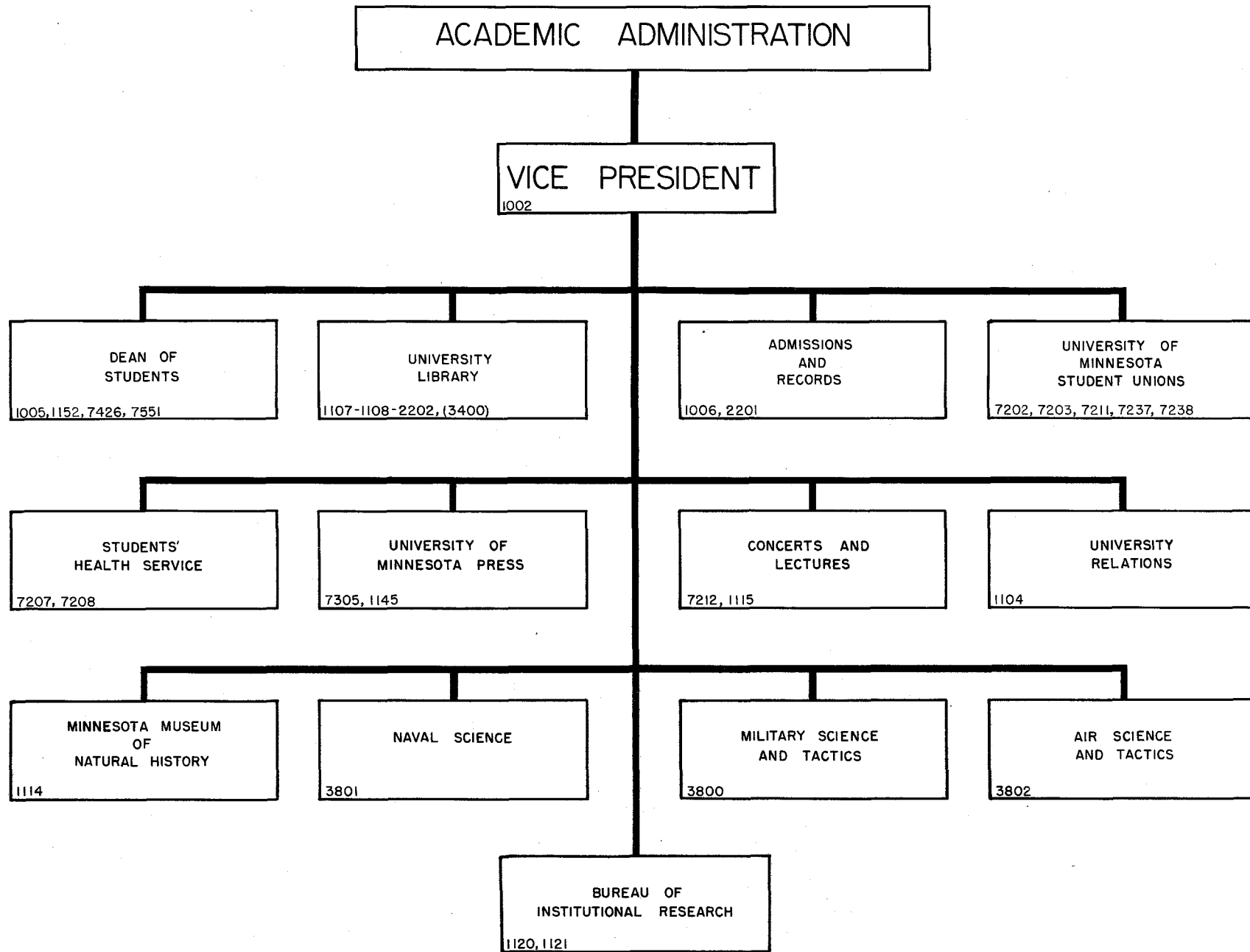
STANDING COMMITTEES

- 1 EXECUTIVE AND FINANCE
- 2 PHYSICAL PLANT
- 3 INVESTMENTS
- 4 BUDGET

* ELECTED BY THE LEGISLATURE FOR SIX YEAR TERMS, FOUR ELECTED EACH BIENNIUM

† OFFICERS SERVE TWO YEAR TERMS





COLLEGE OF SCIENCE, LITERATURE AND THE ARTS

DEAN
2000

ASSISTANT
DEAN

ASSISTANT
DEAN

ASSISTANT
DEAN

SCHOOL
OF
JOURNALISM
2014

ANTHROPOLOGY
2001

ASTRONOMY
2002

SOCIOLOGY
2026

SCHOOL
OF
SOCIAL WORK
(2015)

INTERDEPARTMENTAL
PROGRAMS

CLASSICS
2004

ENGLISH
2006

GENERAL
STUDIES
2018

GEOGRAPHY
2008

GEOLOGICAL
SURVEY
2010

AMERICAN
STUDIES
2030

INTERNATIONAL
RELATIONS AND
AREA STUDIES
2031

GERMAN
2011

HISTORY
2013

MATHEMATICS
2016

MUSIC
2017, 7424

GEOLOGY
AND
MINEROLOGY
2009, 2010

LABORATORY FOR
RESEARCH IN
SOCIAL RELATIONS
2032

POLITICAL
SCIENCE
2021

LINGUISTICS AND
COMPARATIVE
PHILOLOGY
2029

PHILOSOPHY
2019

PHYSICS
2020

PSYCHOLOGY
2023

SPEECH AND
THEATER ARTS
2027, (7442)

ART
2007

PUBLIC
ADMINISTRATION
CENTER
(2021)

ROMANCE
LANGUAGES
2024

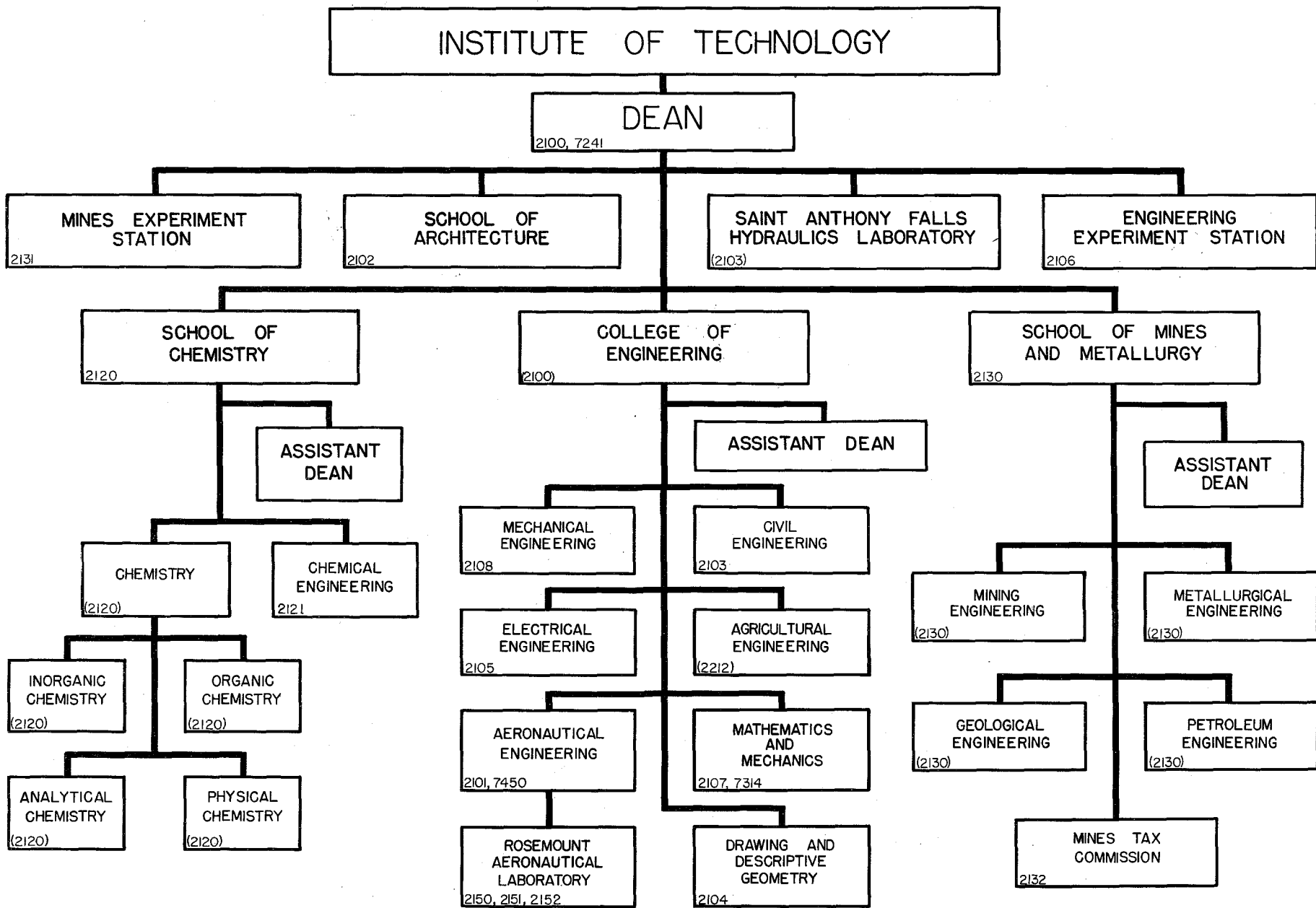
SCANDINAVIAN
2025

BOTANY
2003

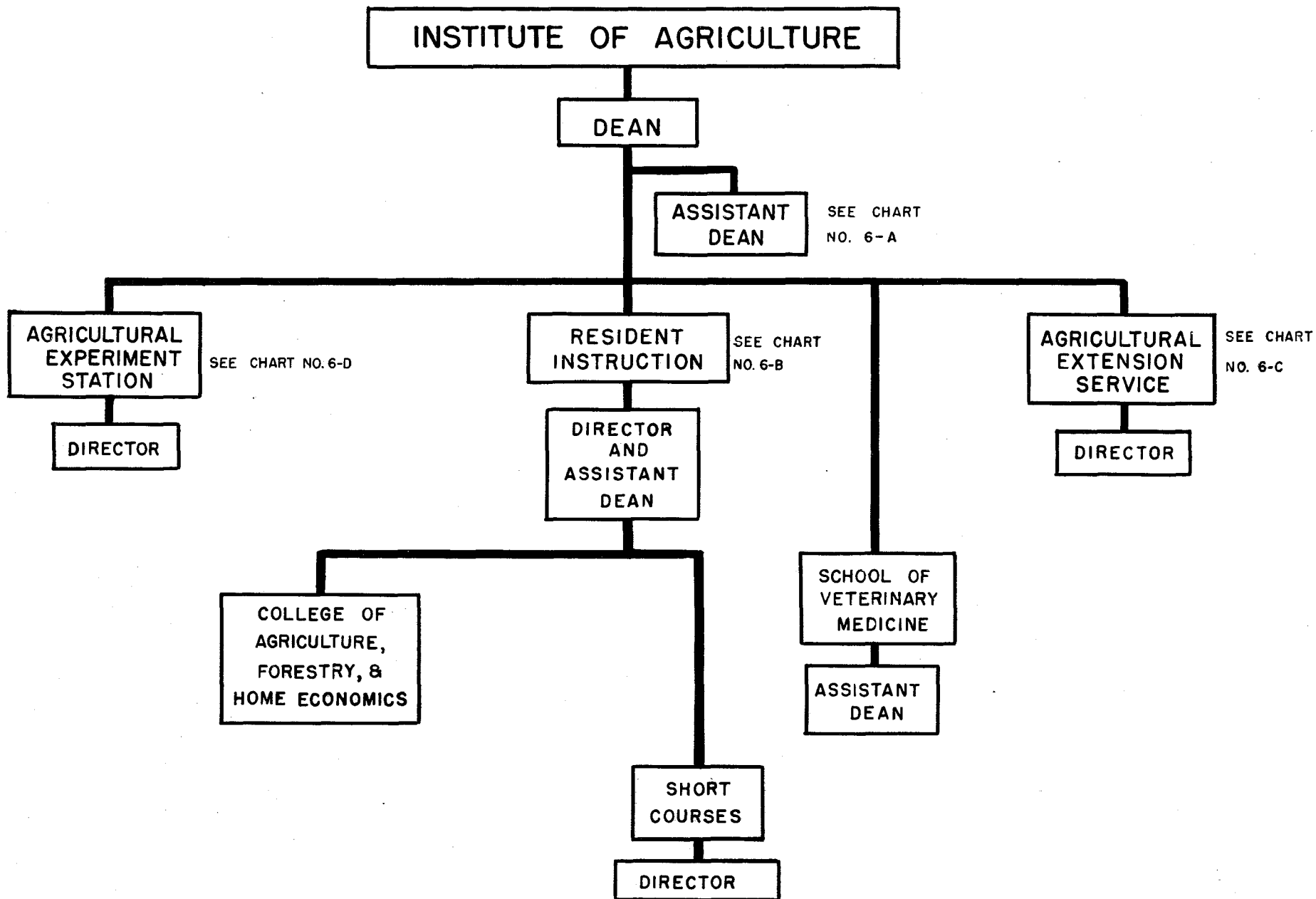
ZOOLOGY
2028

UNIVERSITY
THEATRE
7442, (2027)

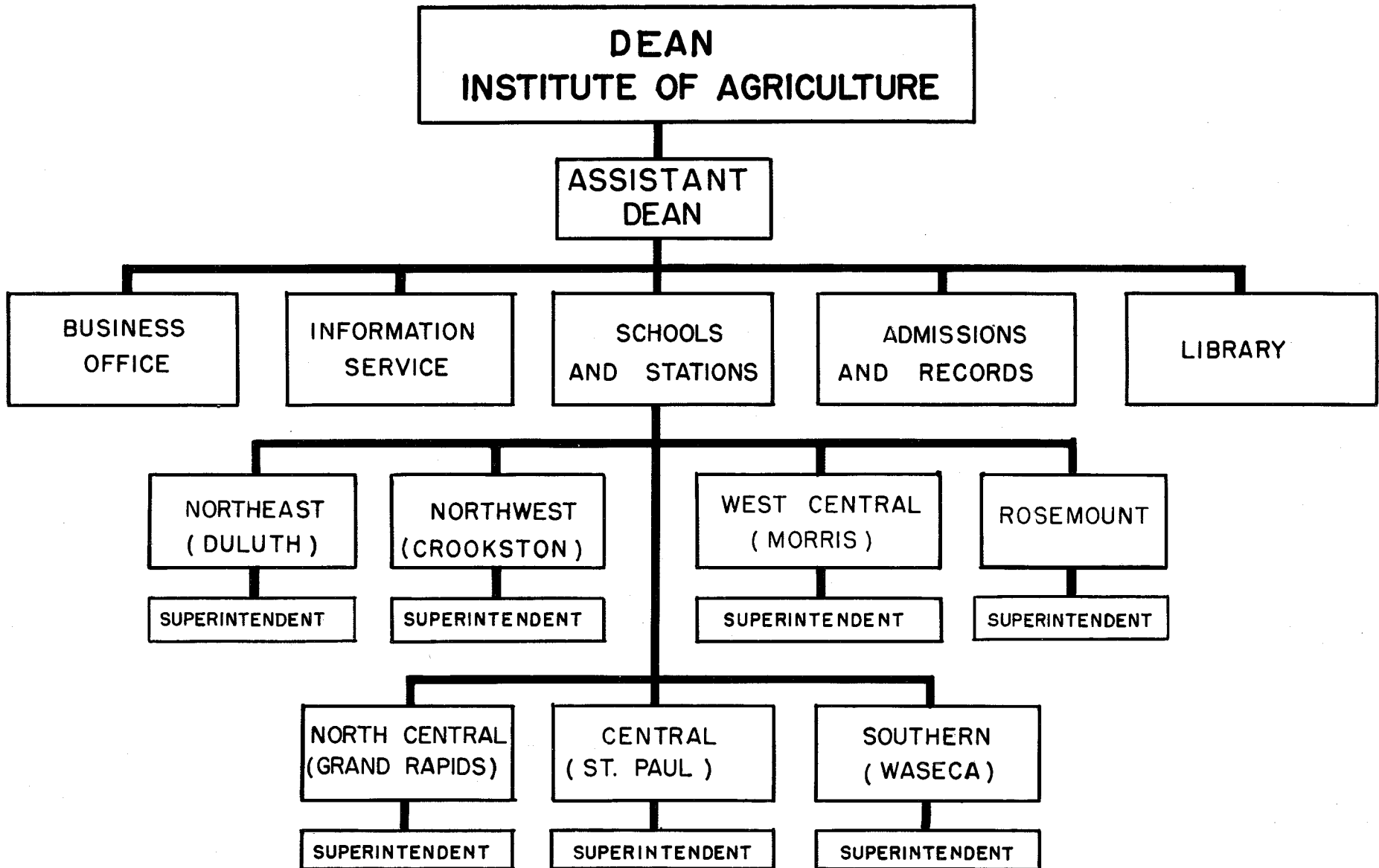
UNIVERSITY
GALLERY
(2007)

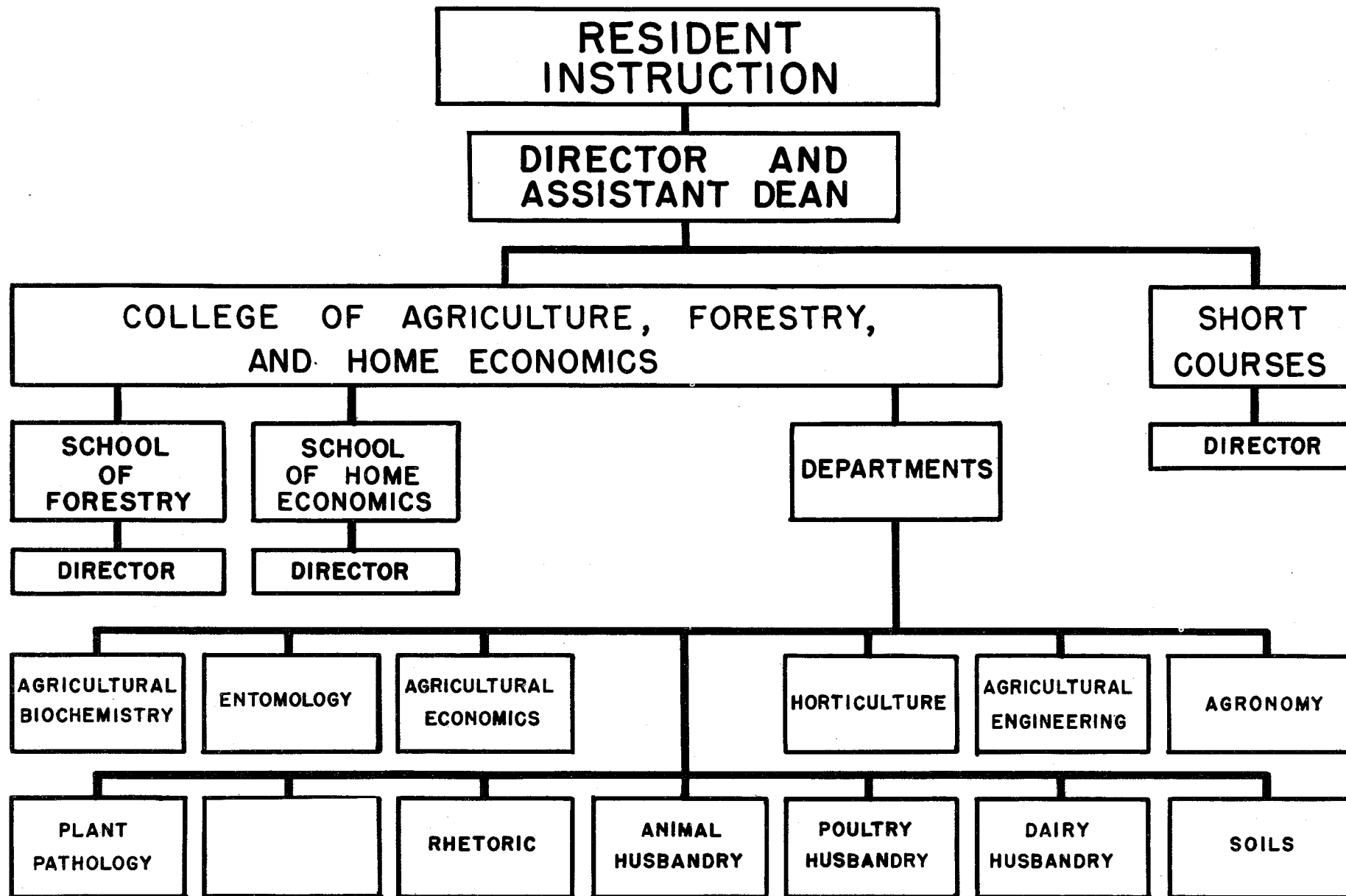


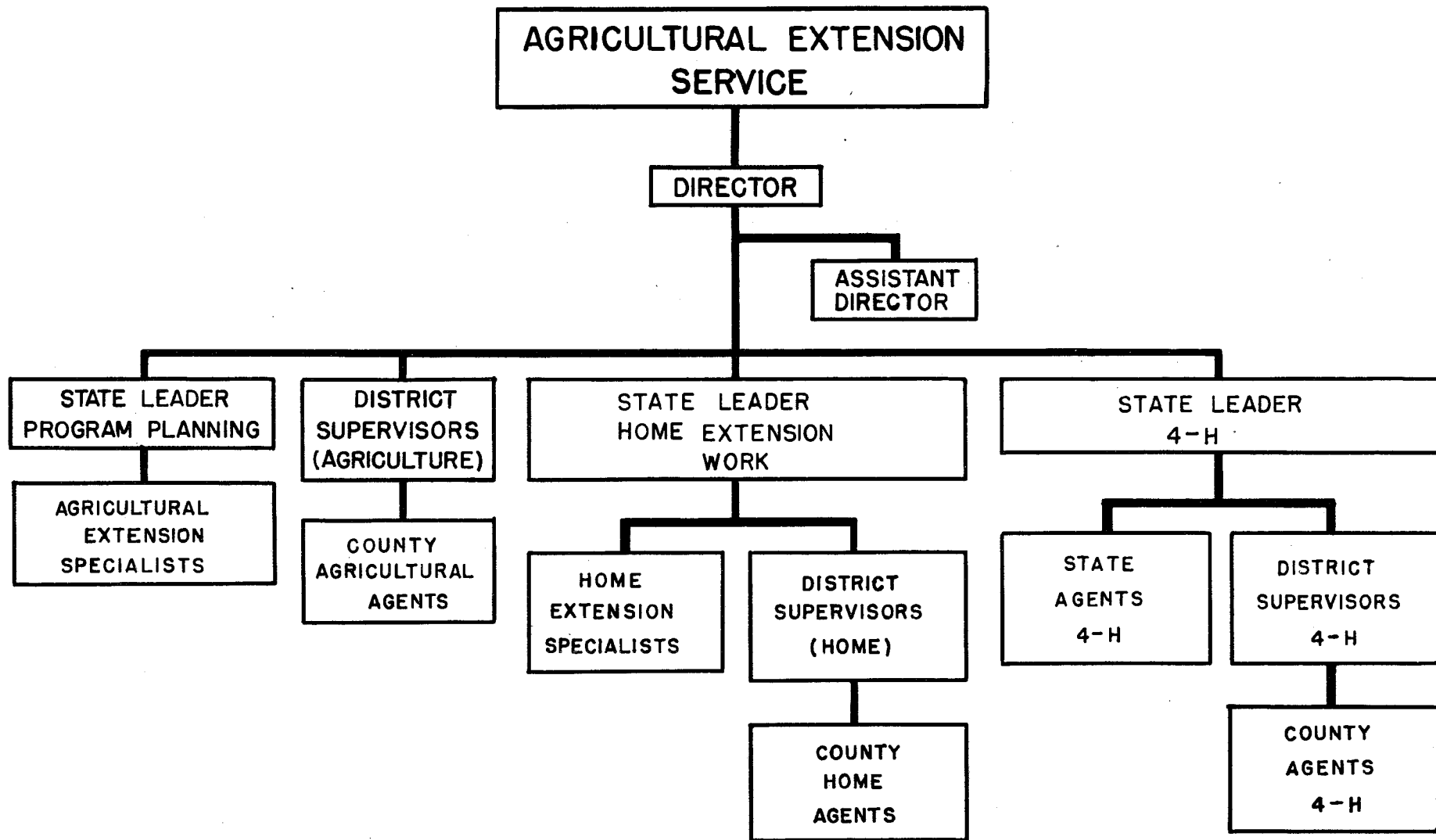
UNIVERSITY OF MINNESOTA ORGANIZATIONAL CHART



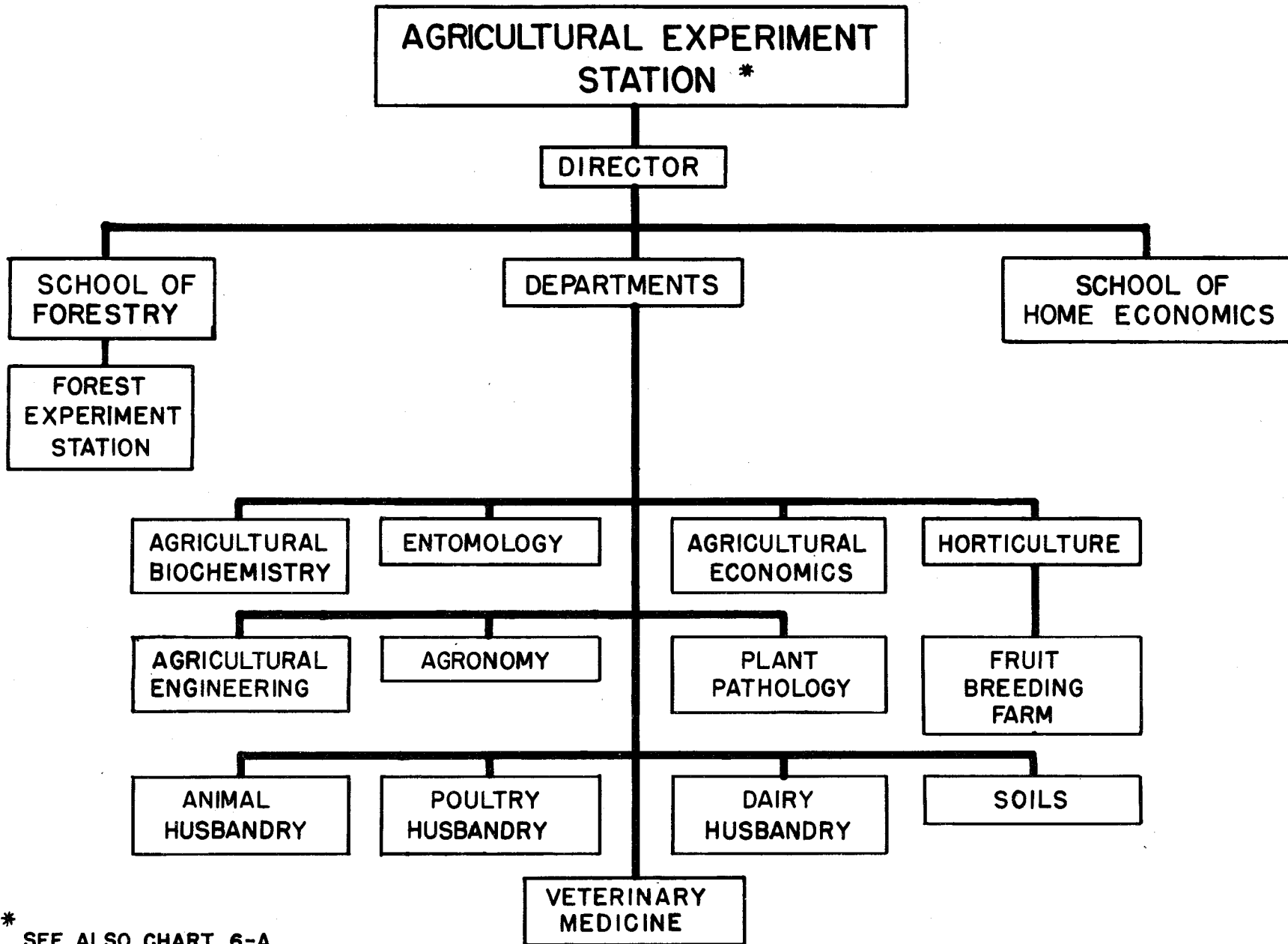
UNIVERSITY OF MINNESOTA ORGANIZATIONAL CHART





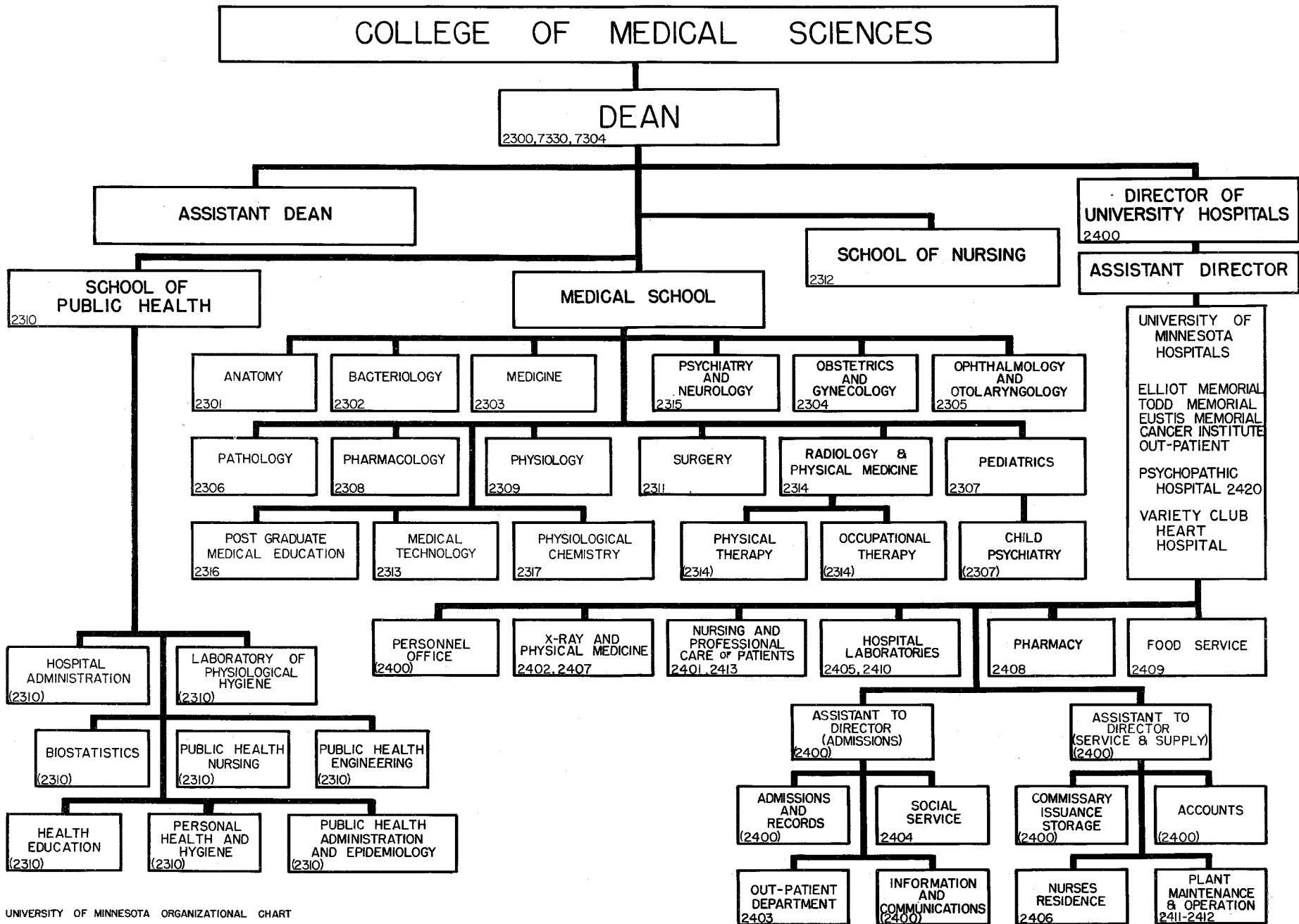


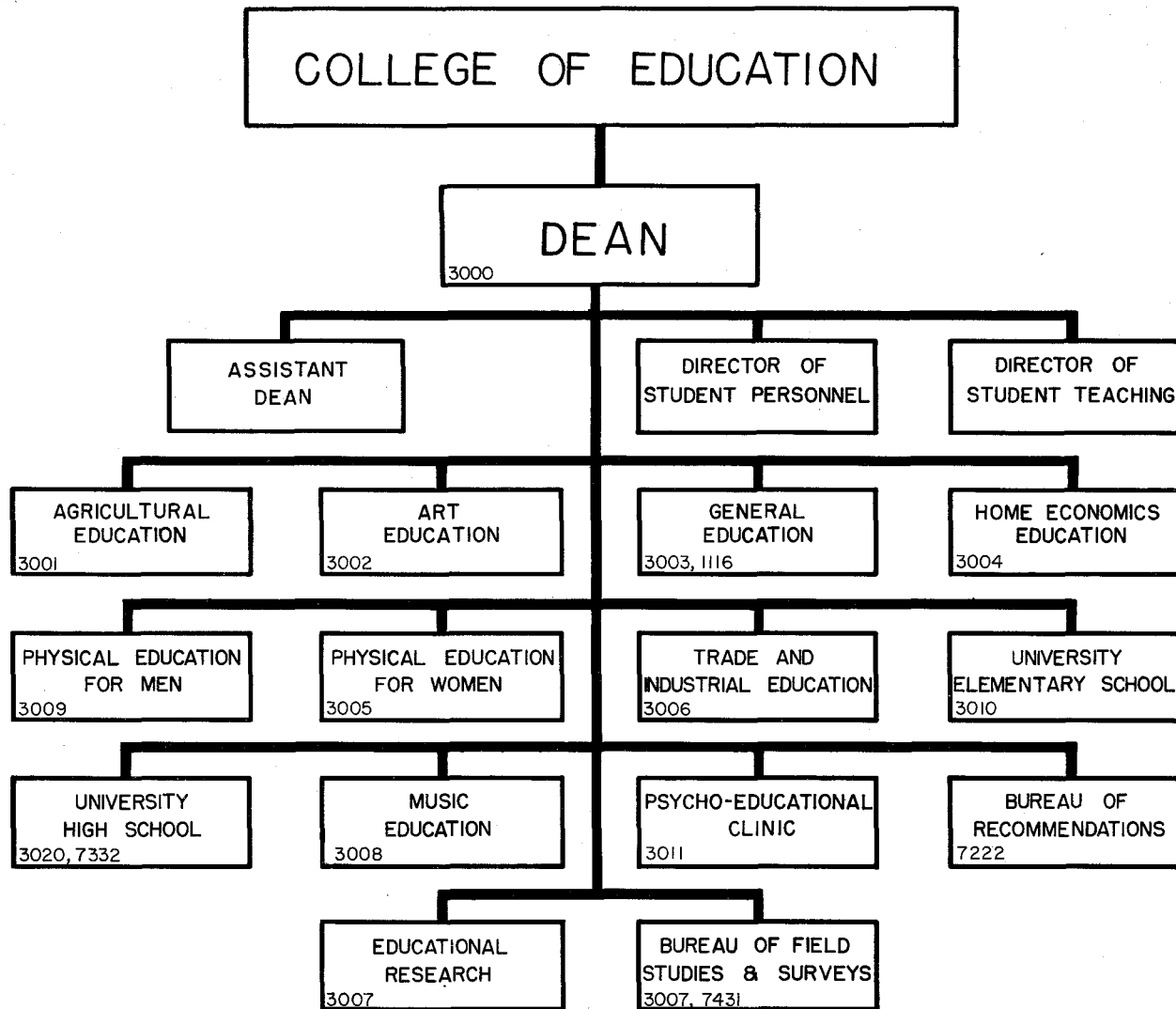
UNIVERSITY OF MINNESOTA ORGANIZATIONAL CHARTS

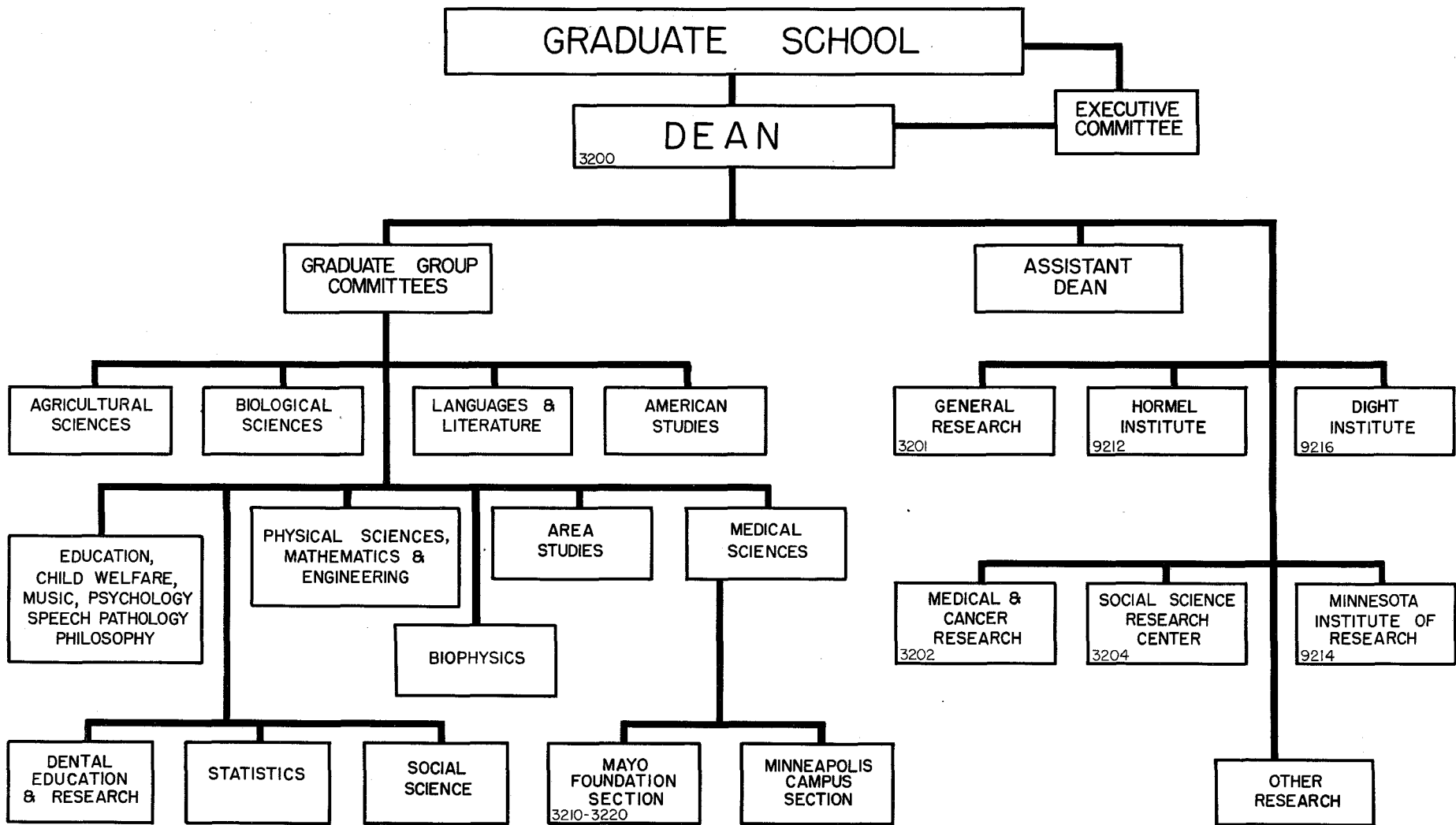


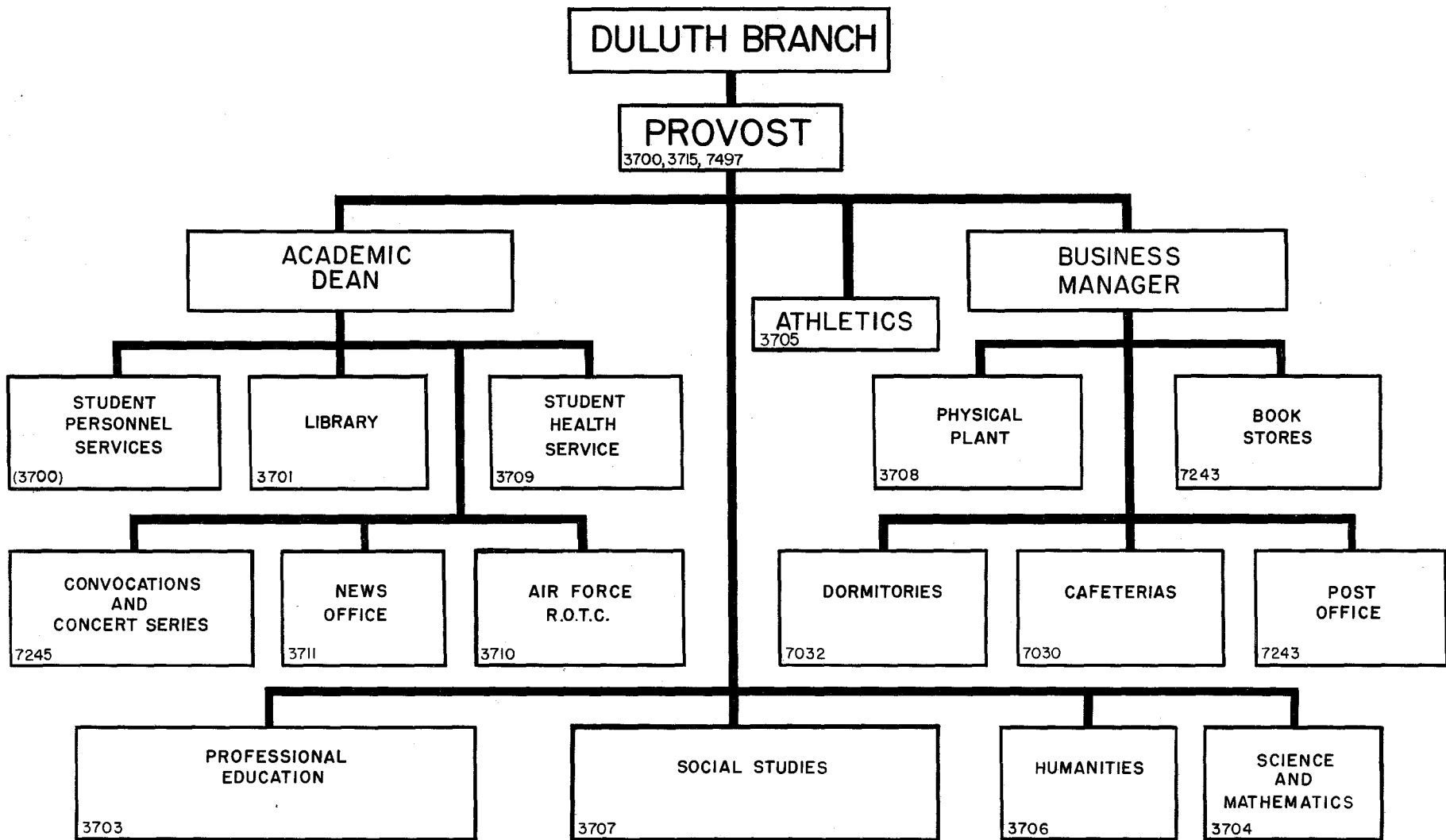
* SEE ALSO CHART 6-A

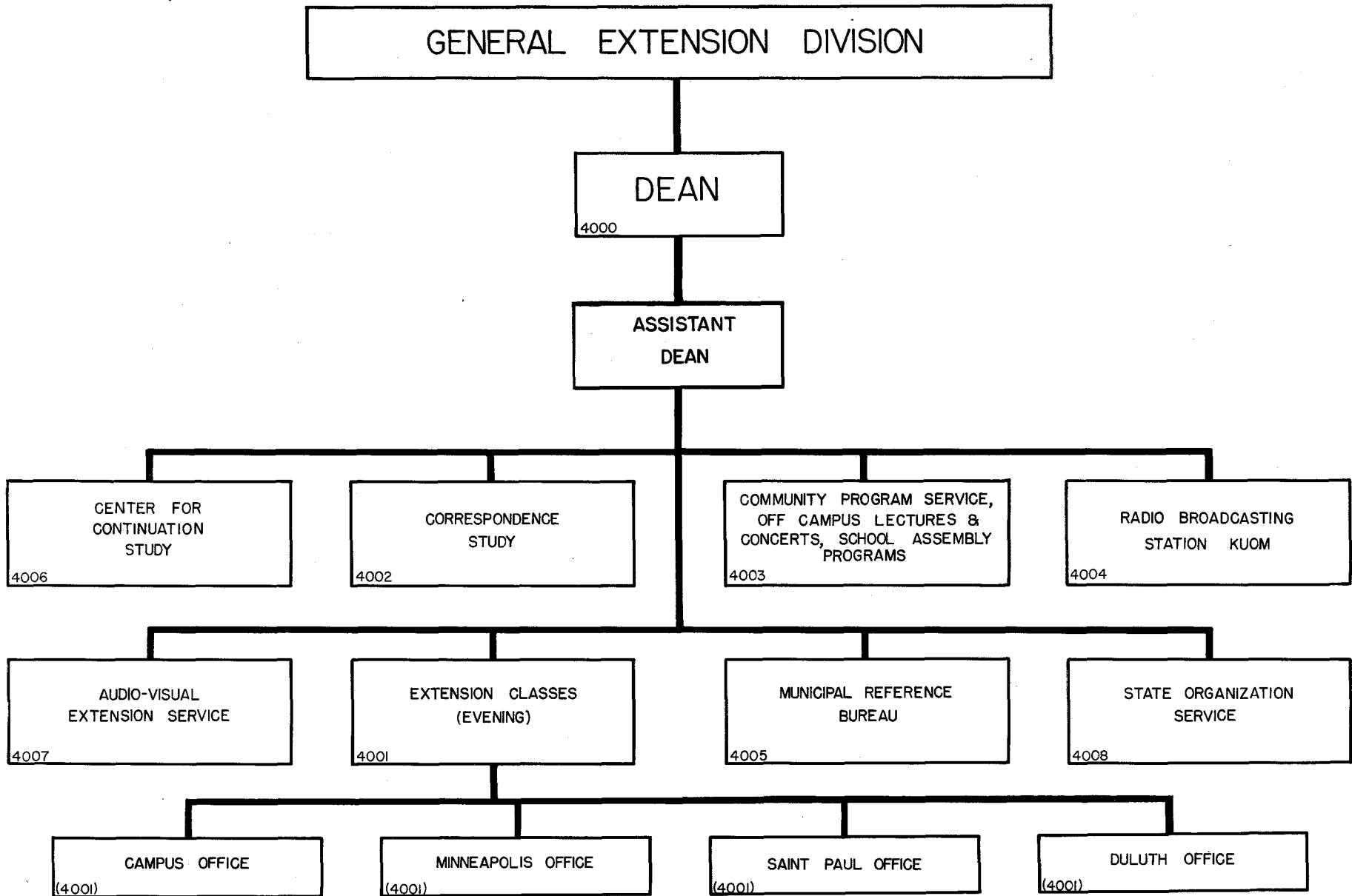
UNIVERSITY OF MINNESOTA ORGANIZATIONAL CHART

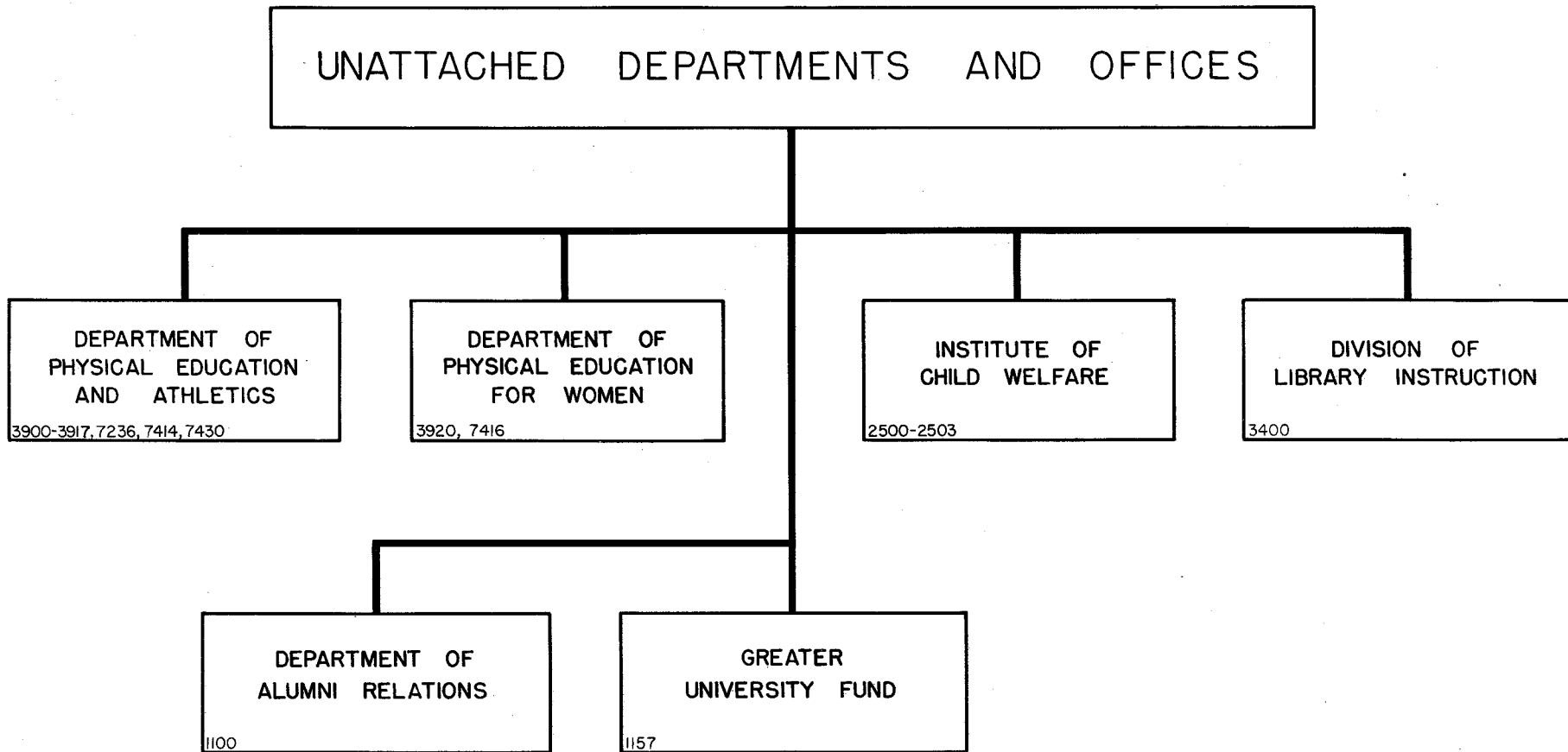


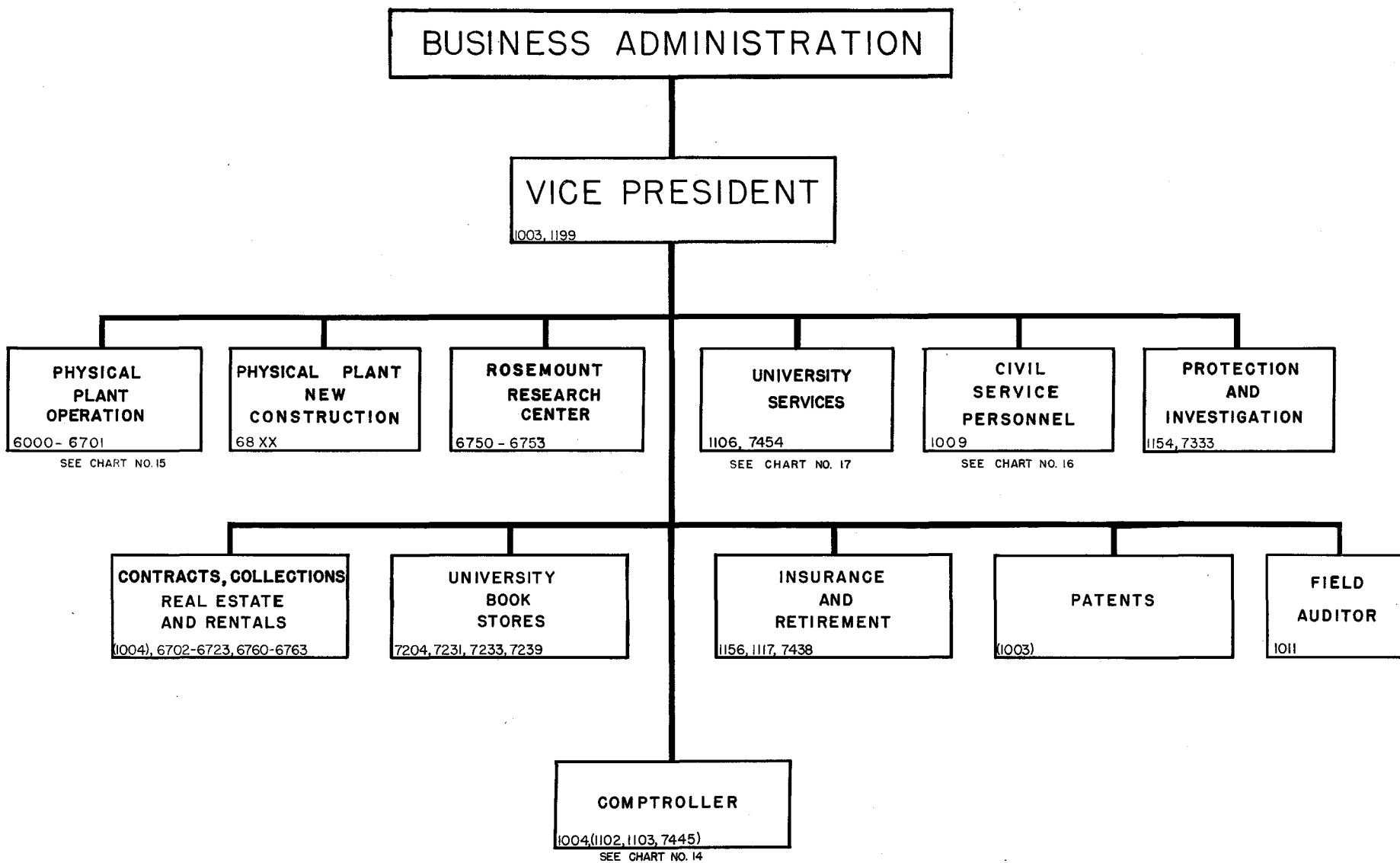


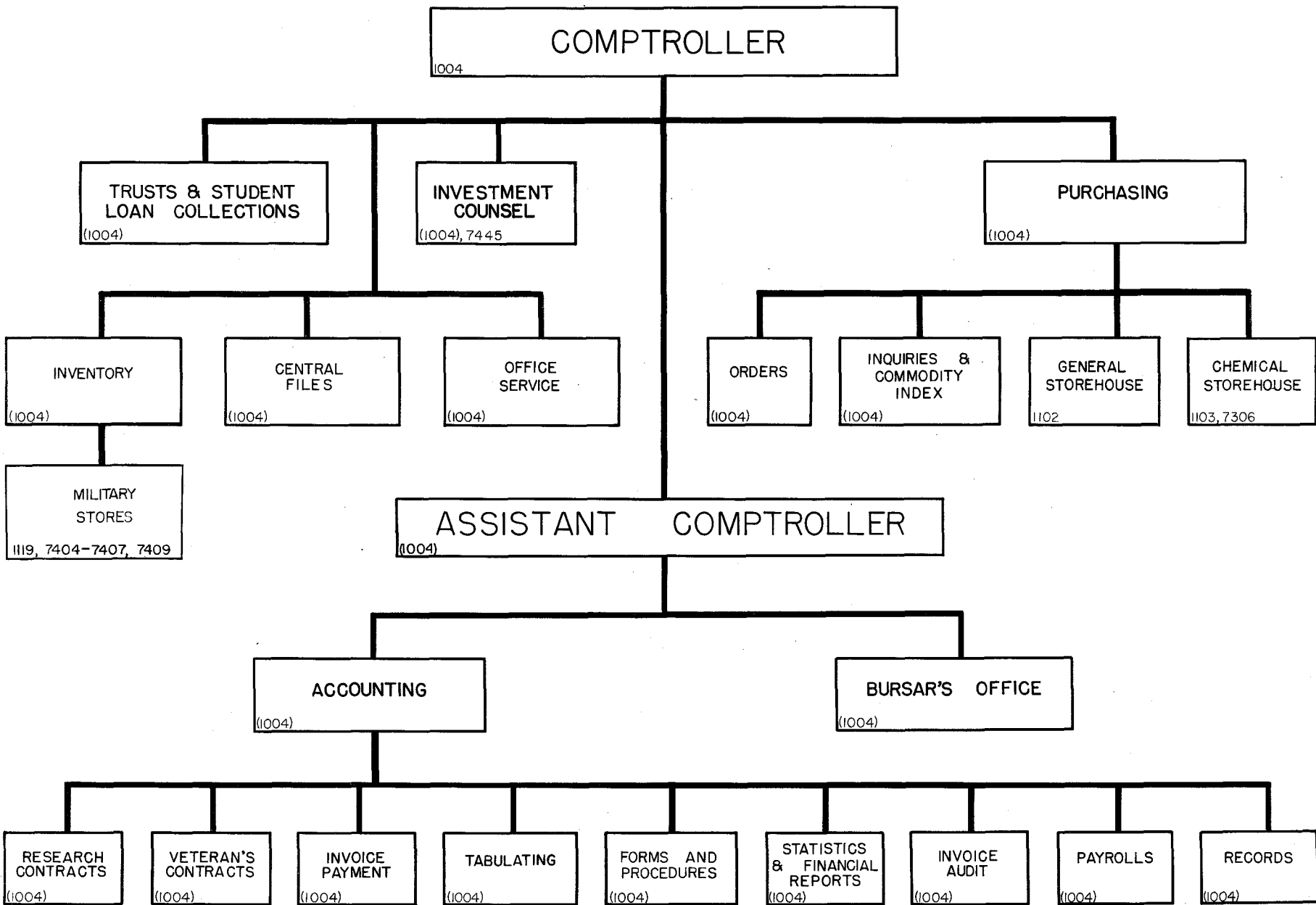












UNIVERSITY OF MINNESOTA ORGANIZATIONAL CHART

PHYSICAL PLANT DEPARTMENT

SUPERVISING ENGINEER
6000, 6400

CUSTODIAL
DIVISION

ASSISTANT SUPERVISING
ENGINEER

TELEPHONE
SERVICE
6001, 6401

UNIVERSITY
FUNCTIONS
6100

GROUNDS
SERVICE
6200

CUSTODIAL
SERVICE
6101, 6501

MAINTENANCE AND OPERATING
DIVISION

ASSISTANT SUPERVISING
ENGINEER

HEATING PLANTS
OPERATION
6103

SHOPS
7320 - 7327

REPAIRS & ALTERATIONS

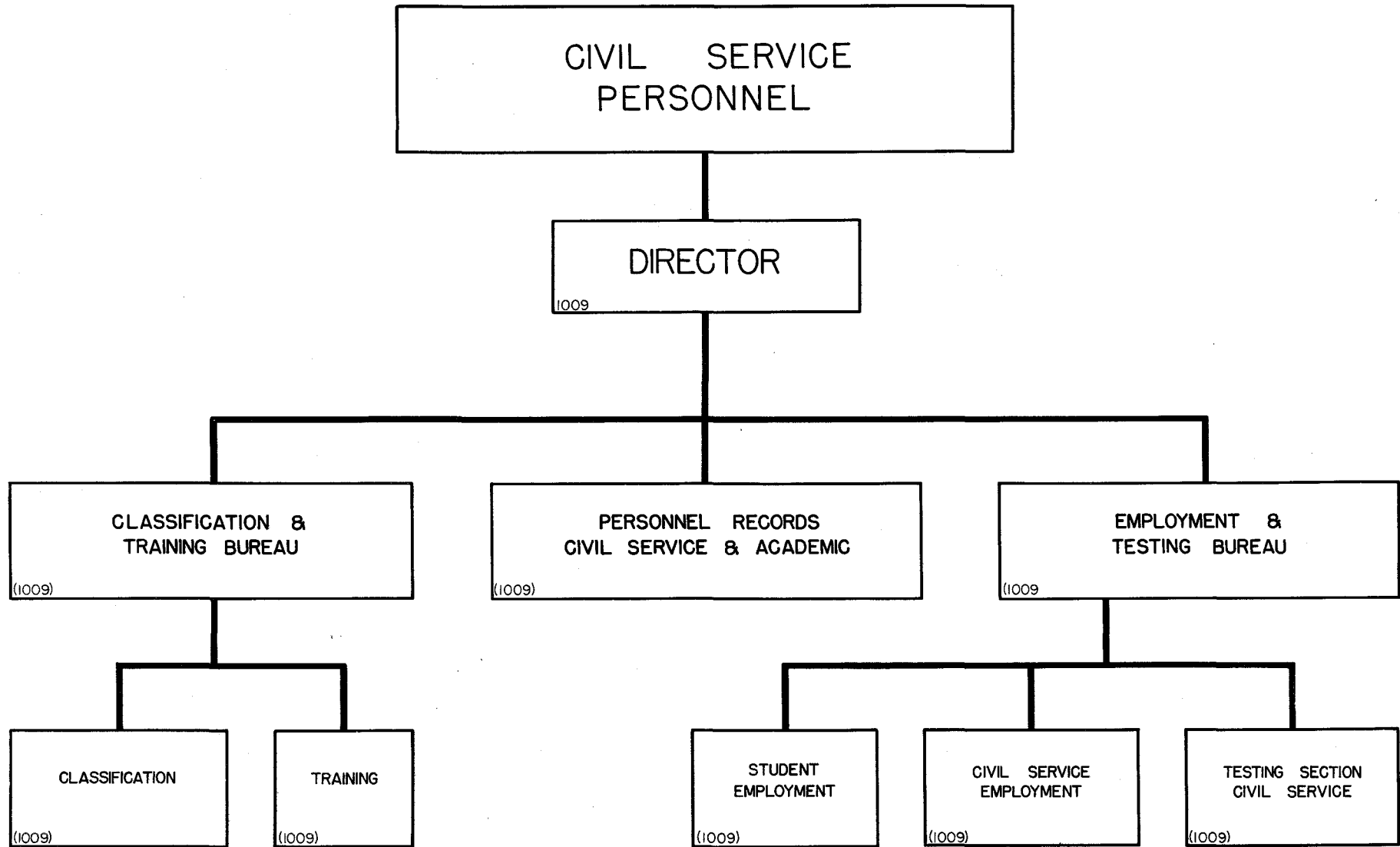
CONSTRUCTION & CONTRACT
DIVISION

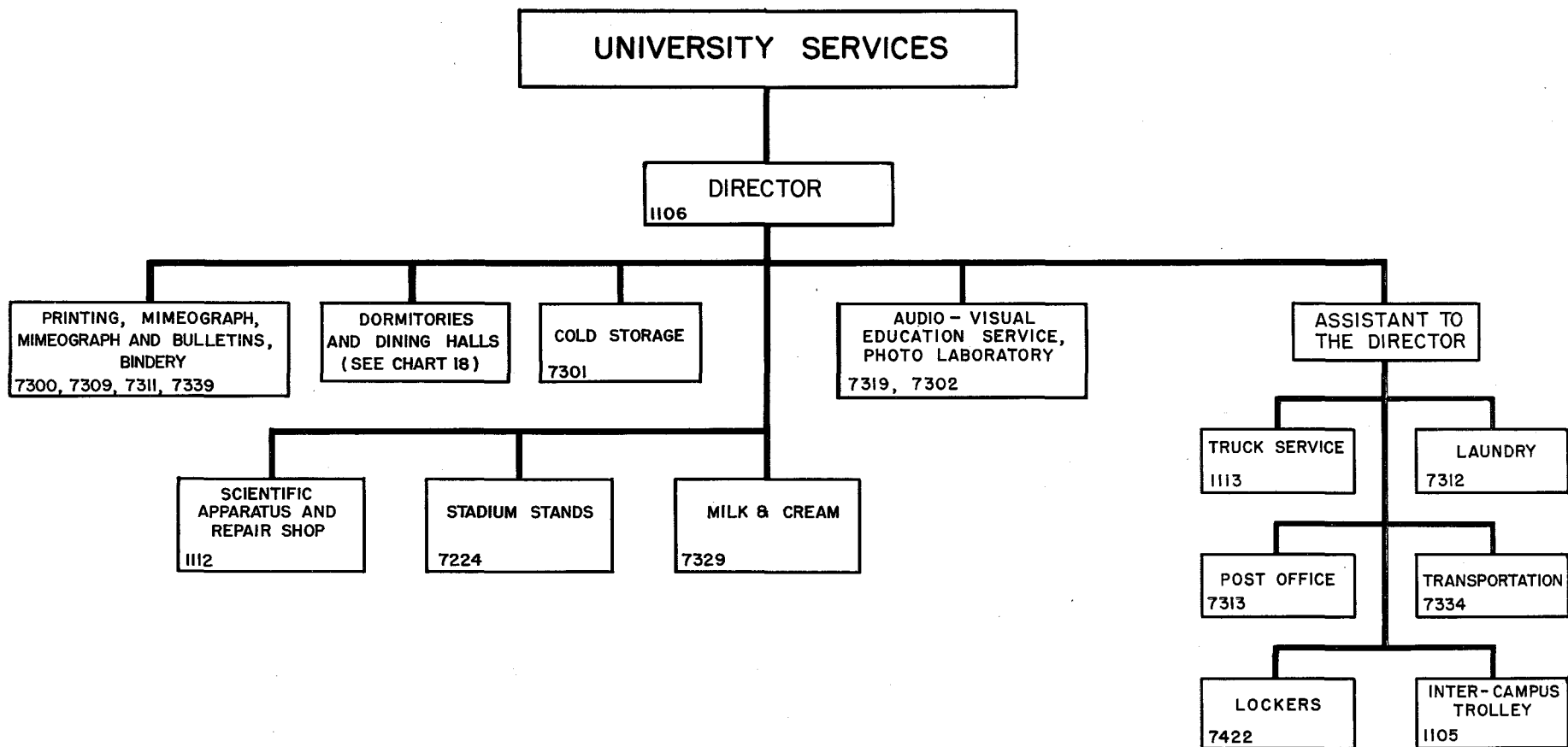
ASSISTANT SUPERVISING
ENGINEER

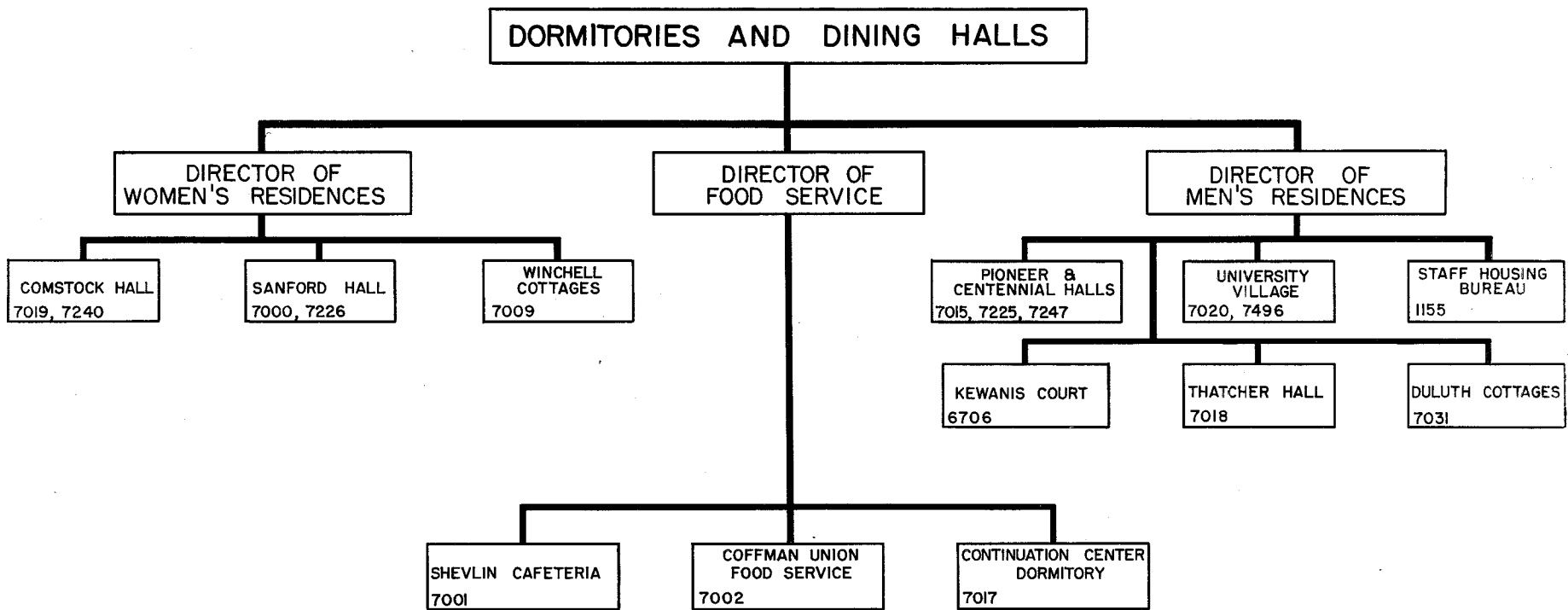
BUILDINGS
CONSTRUCTION
68XX

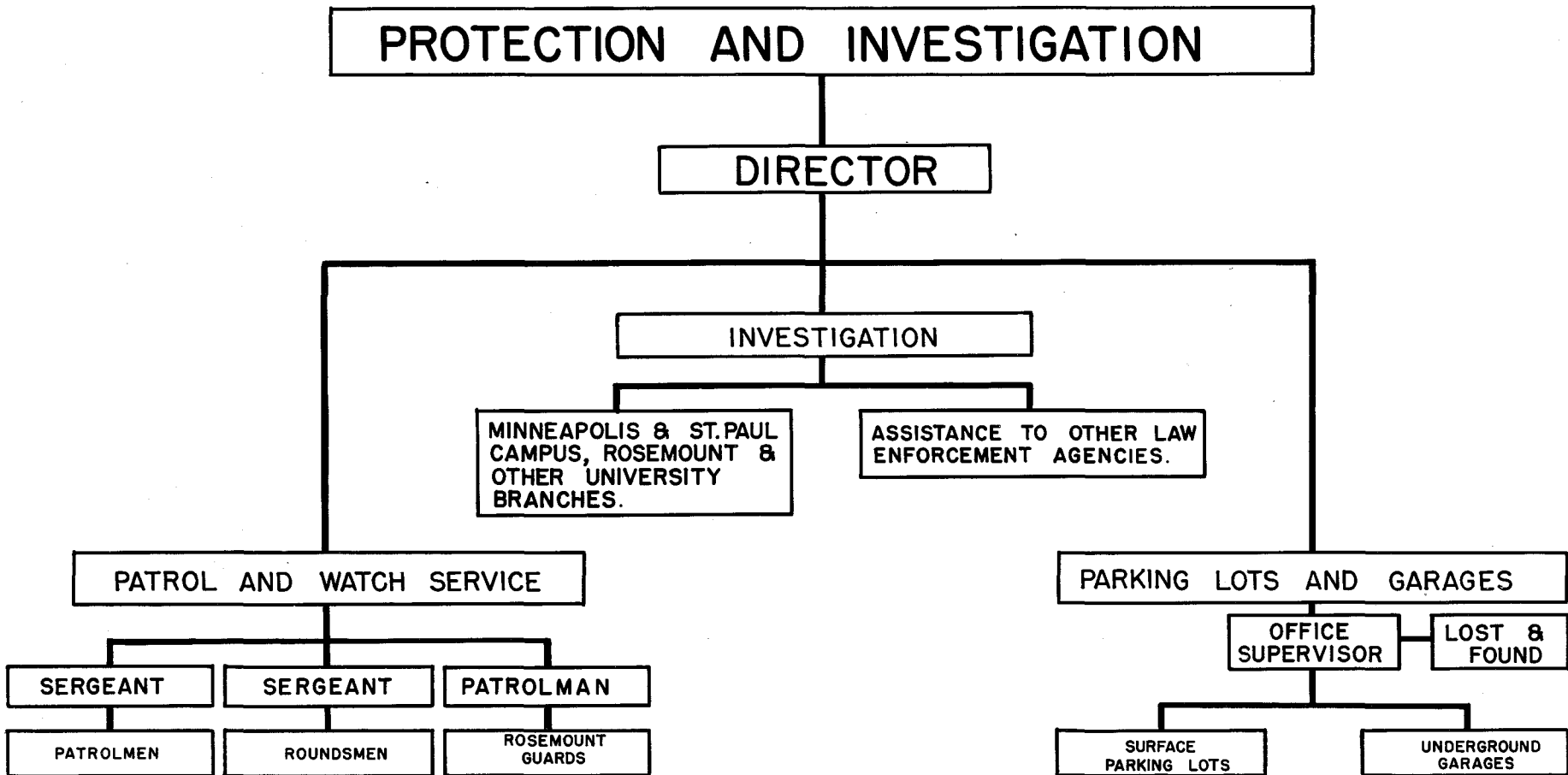
GROUNDS &
UTILITIES
CONSTRUCTION

CONSTRUCTION, MAINTENANCE, AND
OPERATION
DULUTH BRANCH & OUTLYING STATIONS









UNIVERSITY OF MINNESOTA ORGANIZATIONAL CHART

RESEARCH - GIFTS AND ENDOWED
BY MAJOR COLLEGE

50 XX & 80 XX COLLEGE OF SCIENCE, LITERATURE AND THE ARTS
51 XX & 81XX INSTITUTE OF TECHNOLOGY
52XX & 82XX INSTITUTE OF AGRICULTURE
53/56XX & 83/86 XX COLLEGE OF MEDICAL SCIENCES
87 XX SCHOOL OF DENTISTRY
88 XX LAW SCHOOL
89 XX COLLEGE OF PHARMACY
90 XX COLLEGE OF EDUCATION
91/9119 SUMMER SESSION
9120 / 9159 , 9304 SCHOOL OF BUSINESS ADMINISTRATION
9160 / 9199 UNASSIGNED
92 XX GRADUATE SCHOOL
9301, 9312 GENERAL COLLEGE
9382 GENERAL EXTENSION DIVISION
95 XX UNASSIGNED
9450 / 96 XX FELLOWSHIPS, SCHOLARSHIPS, & PRIZES - ENDOWED
93 XX & 97/98 XX FELLOWSHIPS, SCHOLARSHIPS, & PRIZES - DONATIONS
94 / 9449 & 99 XX OTHER TRUST FUNDS