

University of Minnesota  
ORGANIZATION CHARTS



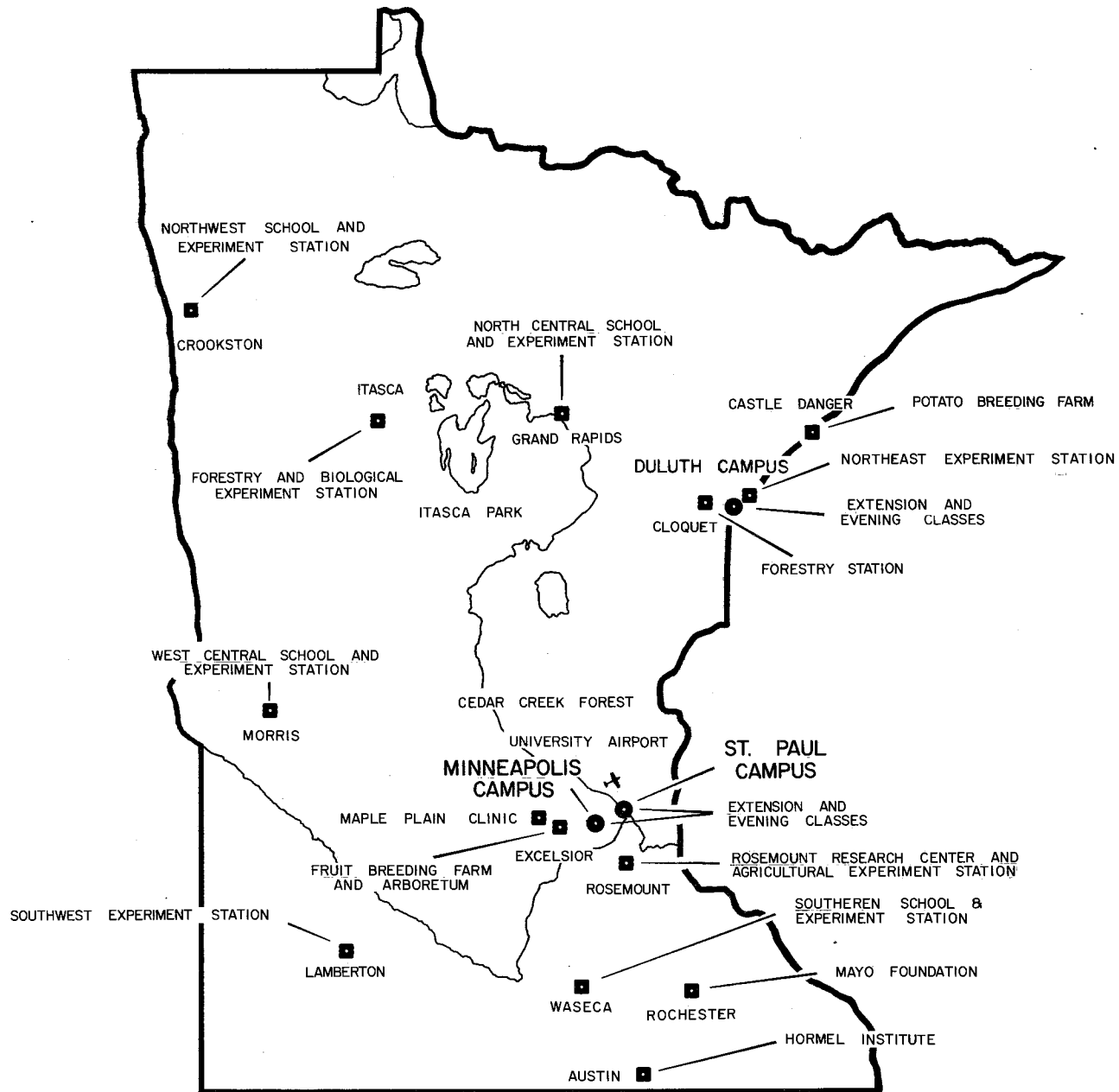
MAY 25, 1959

Minnesota University, President's Office.  
University of Minnesota organization charts. 1959

## INDEX

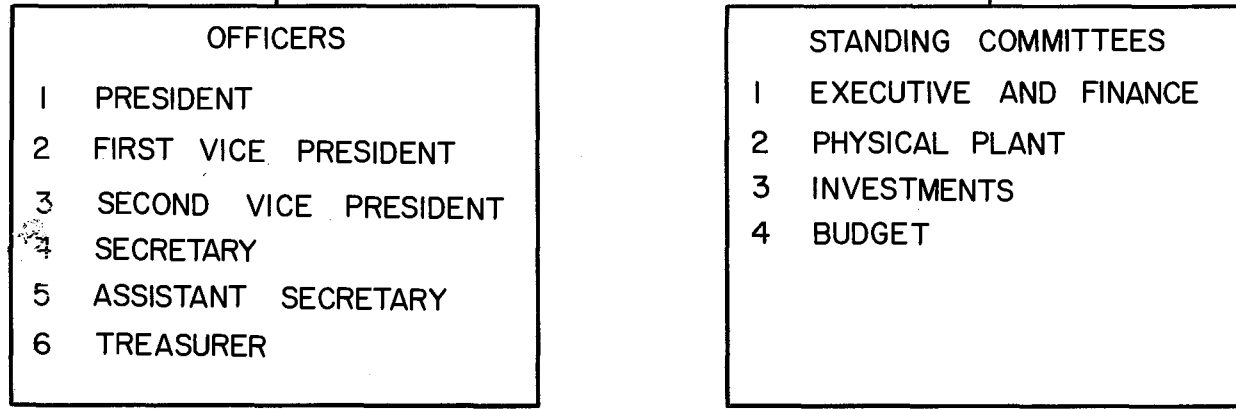
1. BOARD OF REGENTS
2. GENERAL ORGANIZATION
3. COLLEGE OF SCIENCE, LITERATURE, AND THE ARTS
4. INSTITUTE OF TECHNOLOGY
5. INSTITUTE OF AGRICULTURE
6. SCHOOLS AND STATIONS AND ADMINISTRATIVE SERVICES
7. RESIDENT INSTRUCTION
8. AGRICULTURAL EXTENSION SERVICE
9. AGRICULTURAL EXPERIMENT STATION
10. COLLEGE OF MEDICAL SCIENCES
11. UNIVERSITY OF MINNESOTA HOSPITALS
12. COLLEGE OF EDUCATION
13. GRADUATE SCHOOL
14. SCHOOL OF BUSINESS ADMINISTRATION
15. COLLEGE OF VETERINARY MEDICINE
16. DULUTH BRANCH
17. GENERAL EXTENSION DIVISION
18. UNATTACHED DEPARTMENTS AND OFFICES
19. ACADEMIC ADMINISTRATION
20. OFFICE OF THE DEAN OF STUDENTS
21. UNIVERSITY LIBRARIES
22. OFFICE OF ADMISSIONS AND RECORDS
23. UNIVERSITY OF MINNESOTA STUDENT UNIONS
24. UNIVERSITY HEALTH SERVICE
25. UNIVERSITY OF MINNESOTA PRESS
26. DEPARTMENT OF CONCERTS AND LECTURES
27. DEPARTMENT OF UNIVERSITY RELATIONS
28. MINNESOTA MUSEUM OF NATURAL HISTORY
29. BUREAU OF INSTITUTIONAL RESEARCH
30. BUSINESS ADMINISTRATION
31. COMPTROLLER
32. PHYSICAL PLANT DEPARTMENT
33. CONSTRUCTION AND CONTRACT DIVISION
34. MAINTENANCE AND OPERATING DIVISION
35. CUSTODIAL AND GROUNDS DIVISION
36. ROSEMOUNT RESEARCH CENTER
37. UNIVERSITY SERVICES
38. CIVIL SERVICE PERSONNEL
39. DEPARTMENT OF PROTECTION AND SAFETY
40. UNIVERSITY BOOKSTORES
41. DEPARTMENT OF INSURANCE AND RETIREMENT

MAD  
Or 3



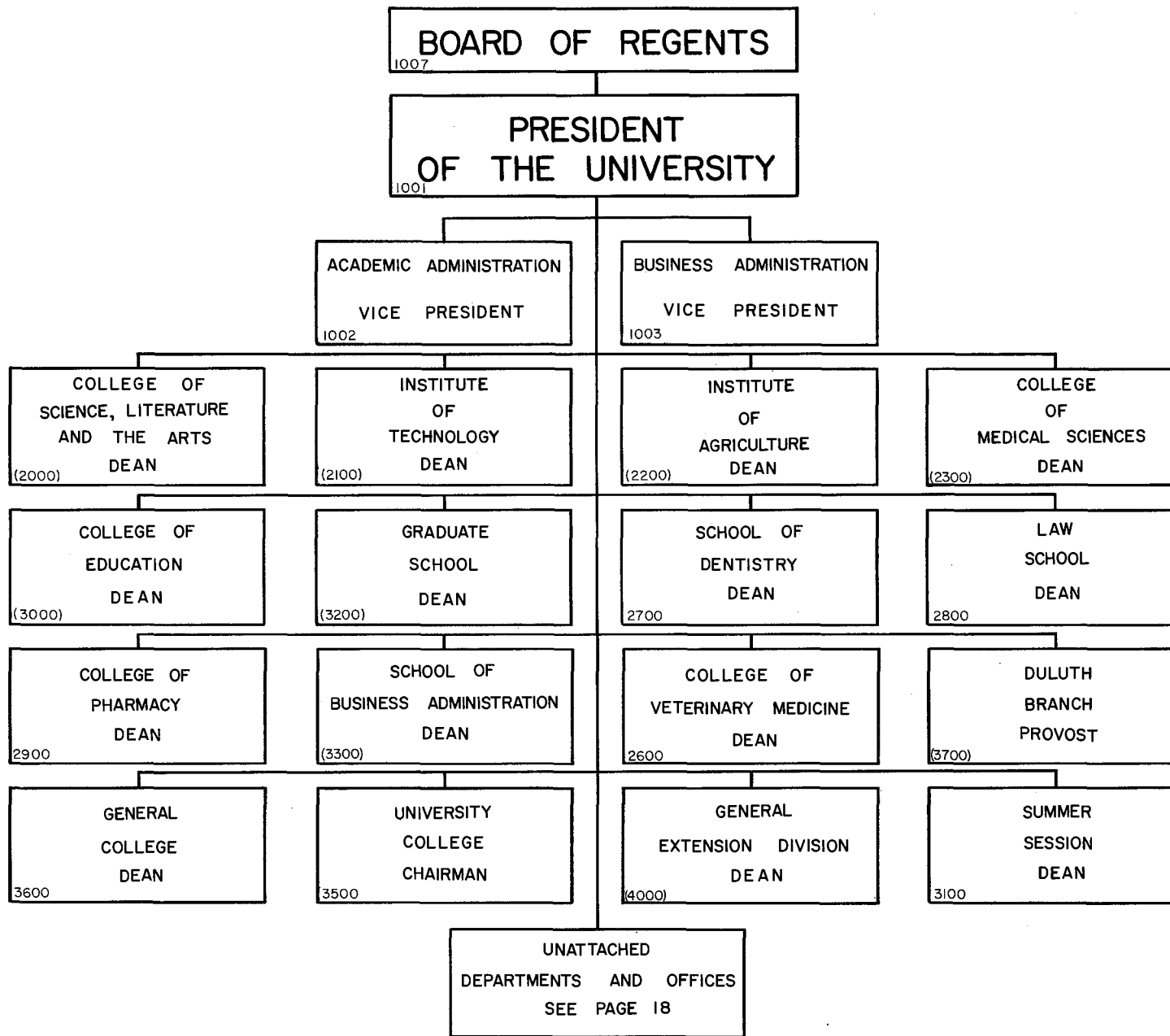
UNIVERSITY OF MINNESOTA  
PLAN SHOWING LOCATIONS OF  
INSTRUCTIONAL and RESEARCH UNITS

# BOARD OF REGENTS



ELECTED BY THE LEGISLATURE FOR SIX YEAR TERMS, FOUR ELECTED EACH BIENNIUM

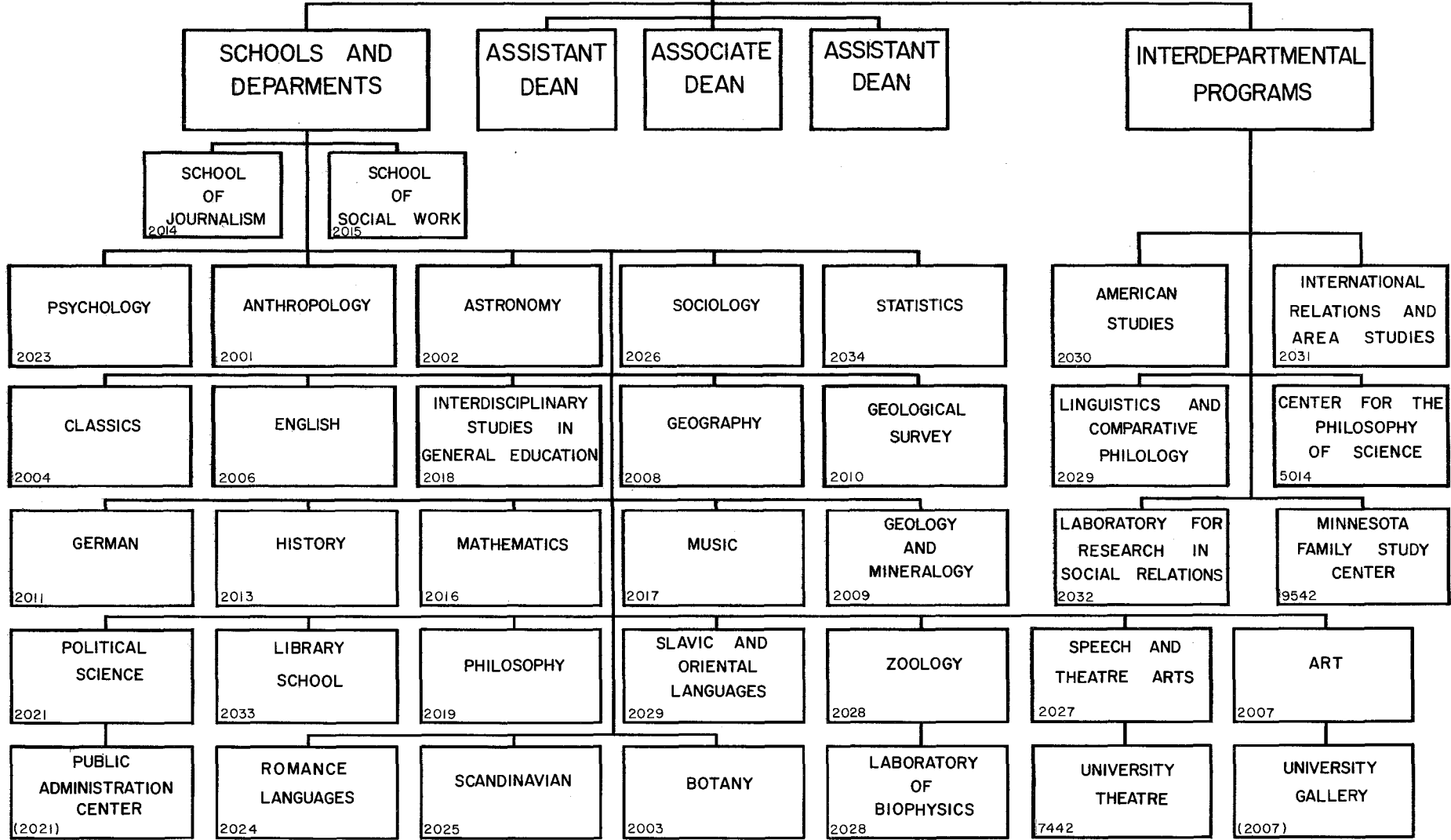
OFFICERS SERVE TWO YEAR TERMS

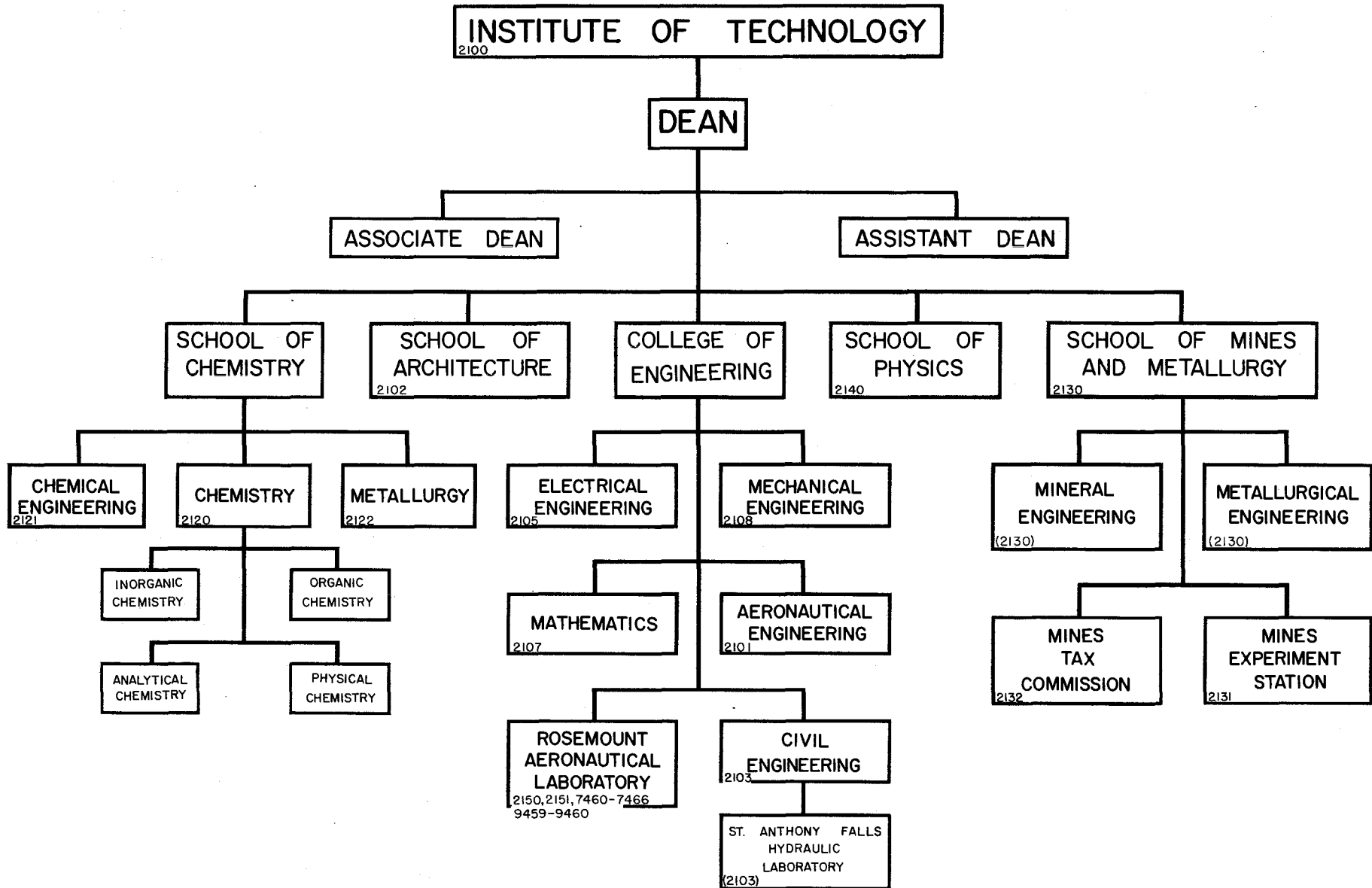


2000

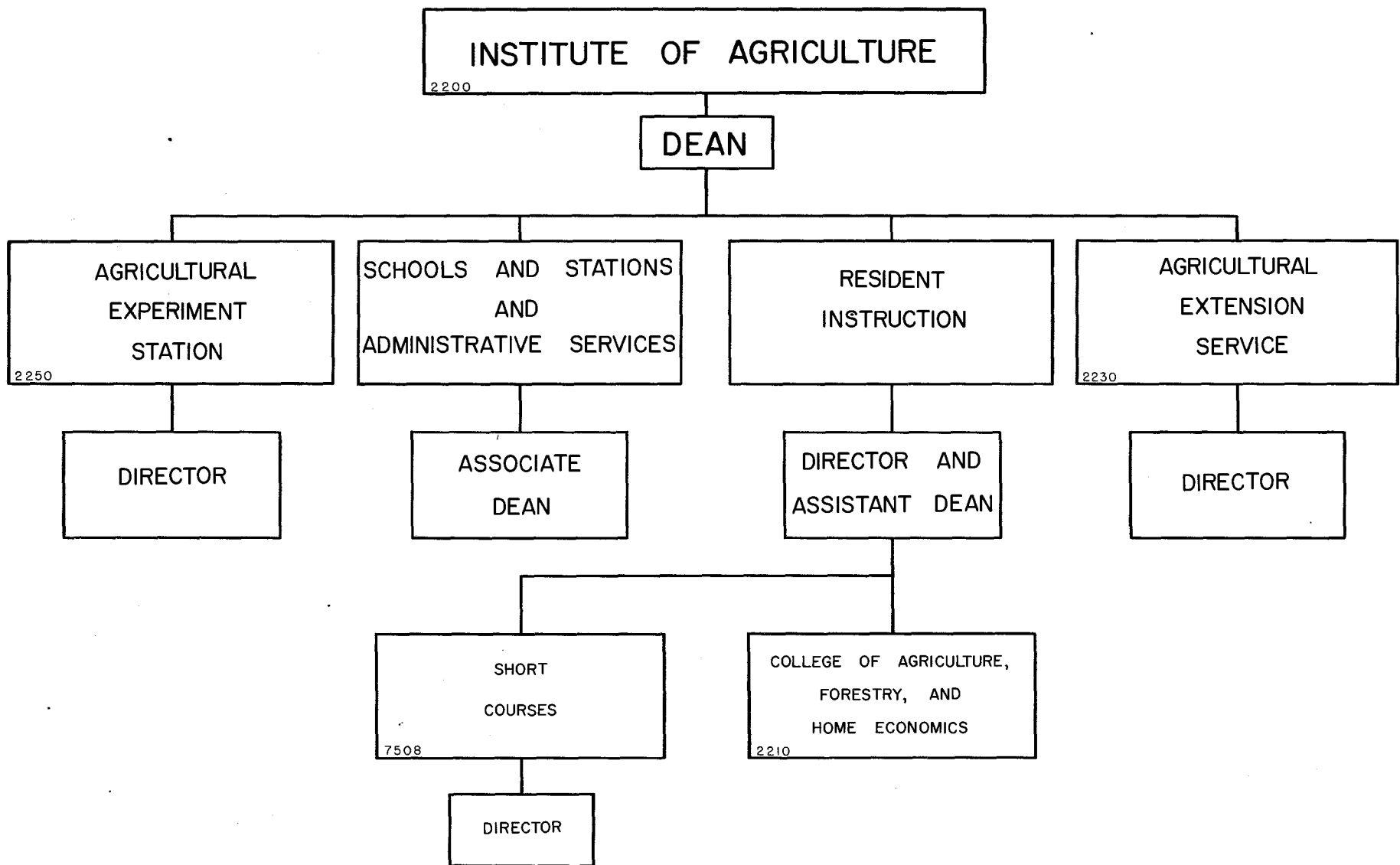
**COLLEGE OF SCIENCE, LITERATURE  
AND THE ARTS**

**DEAN**

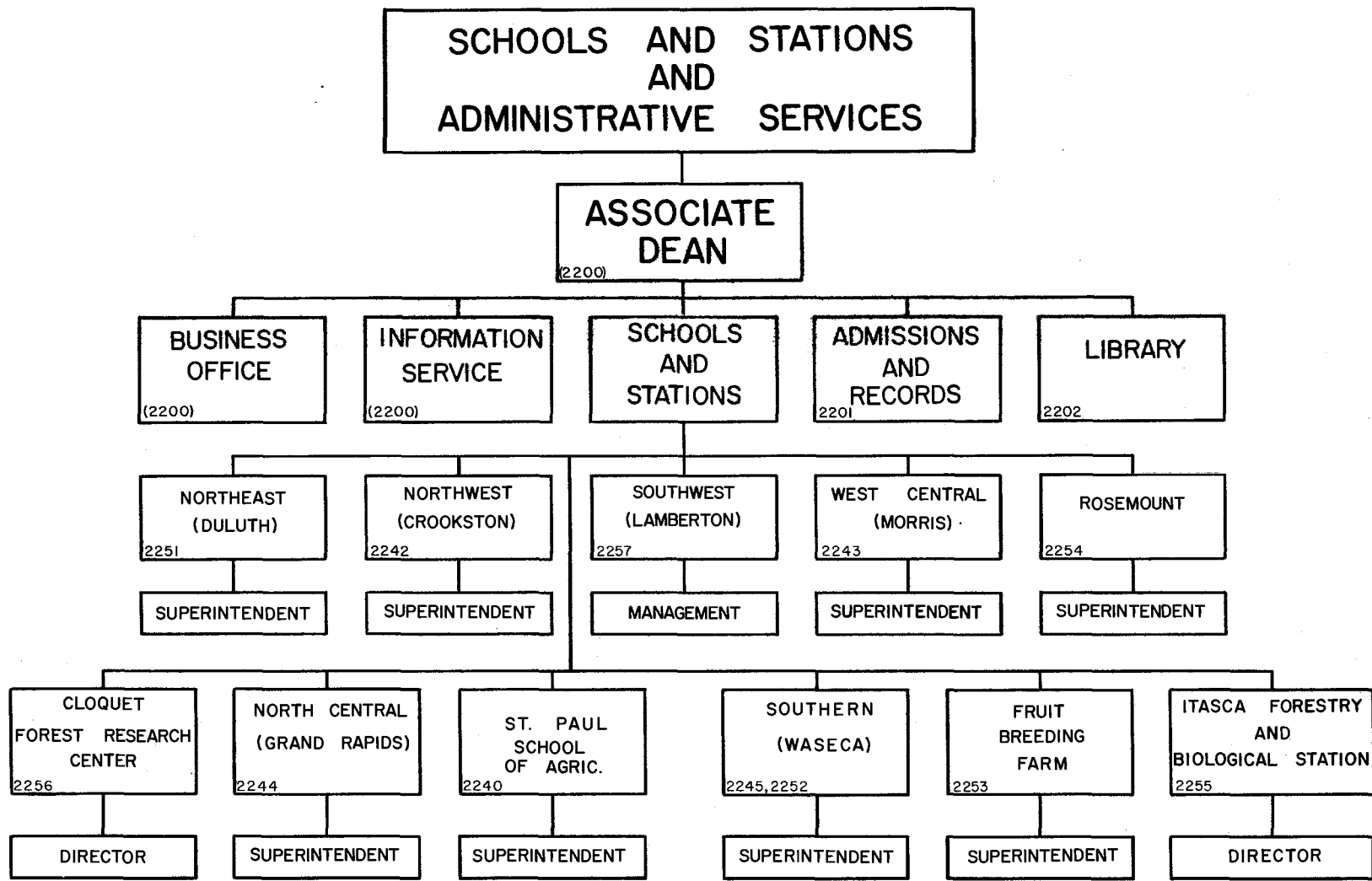


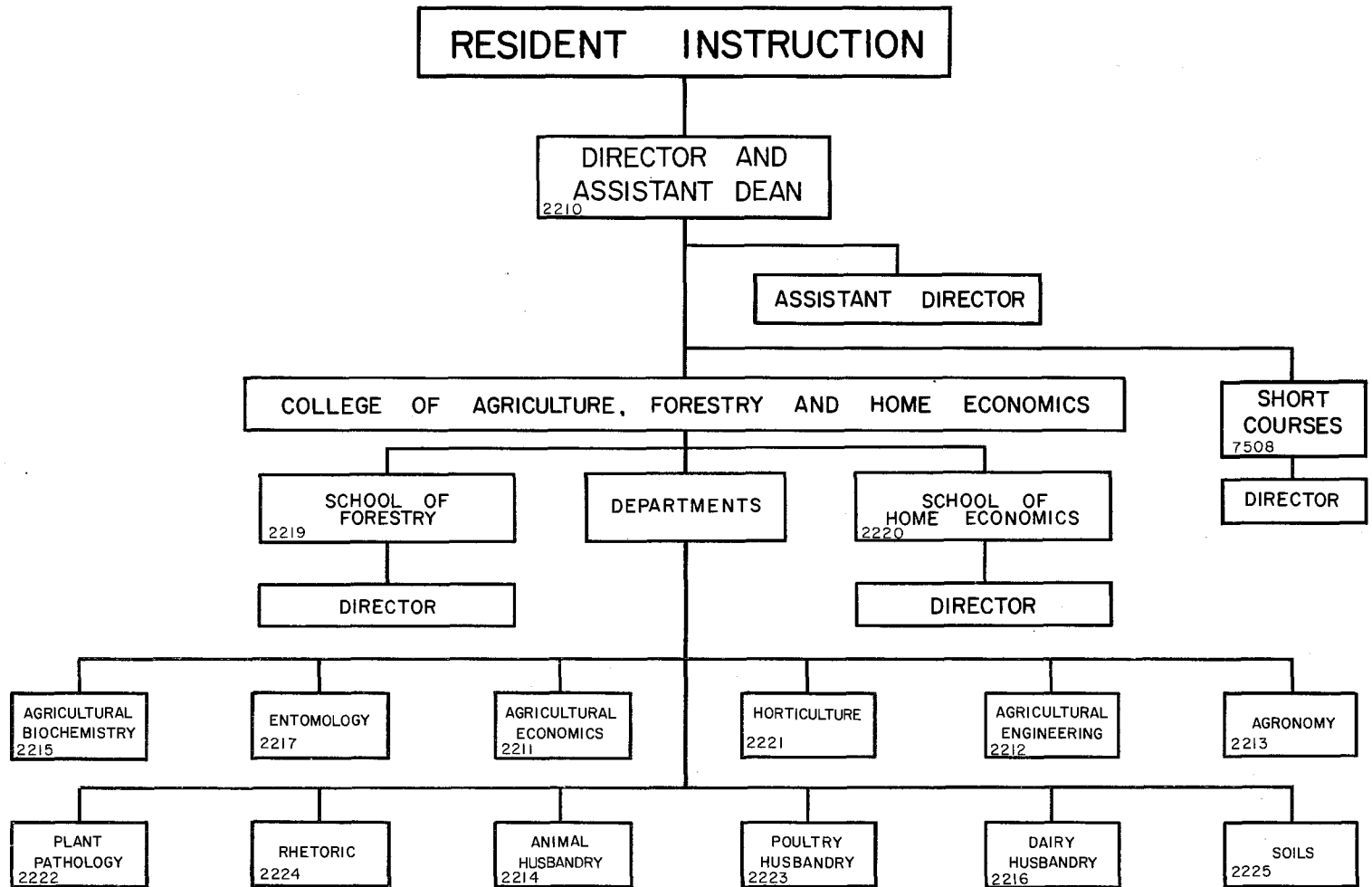


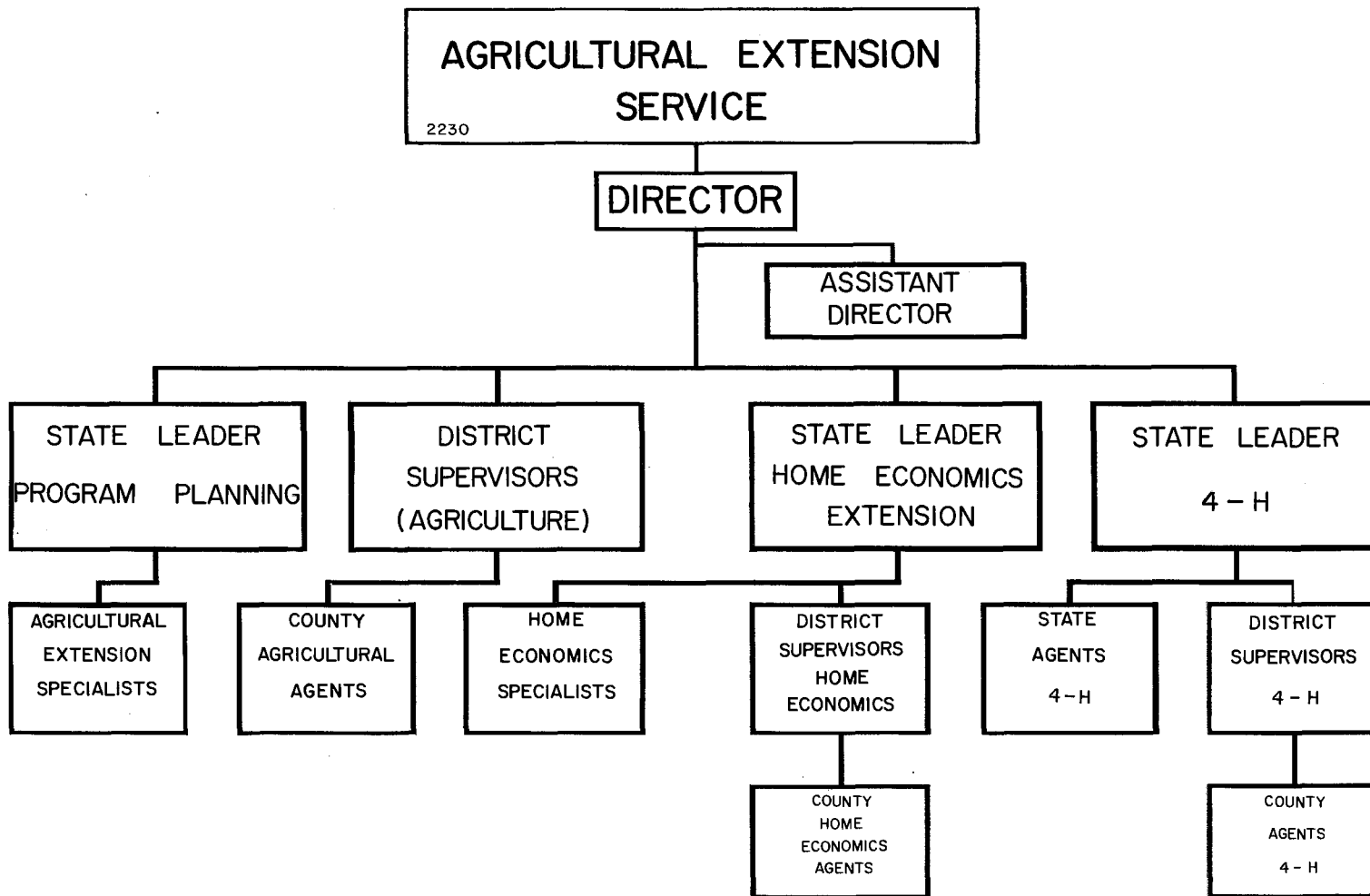
UNIVERSITY OF MINNESOTA ORGANIZATIONAL CHART



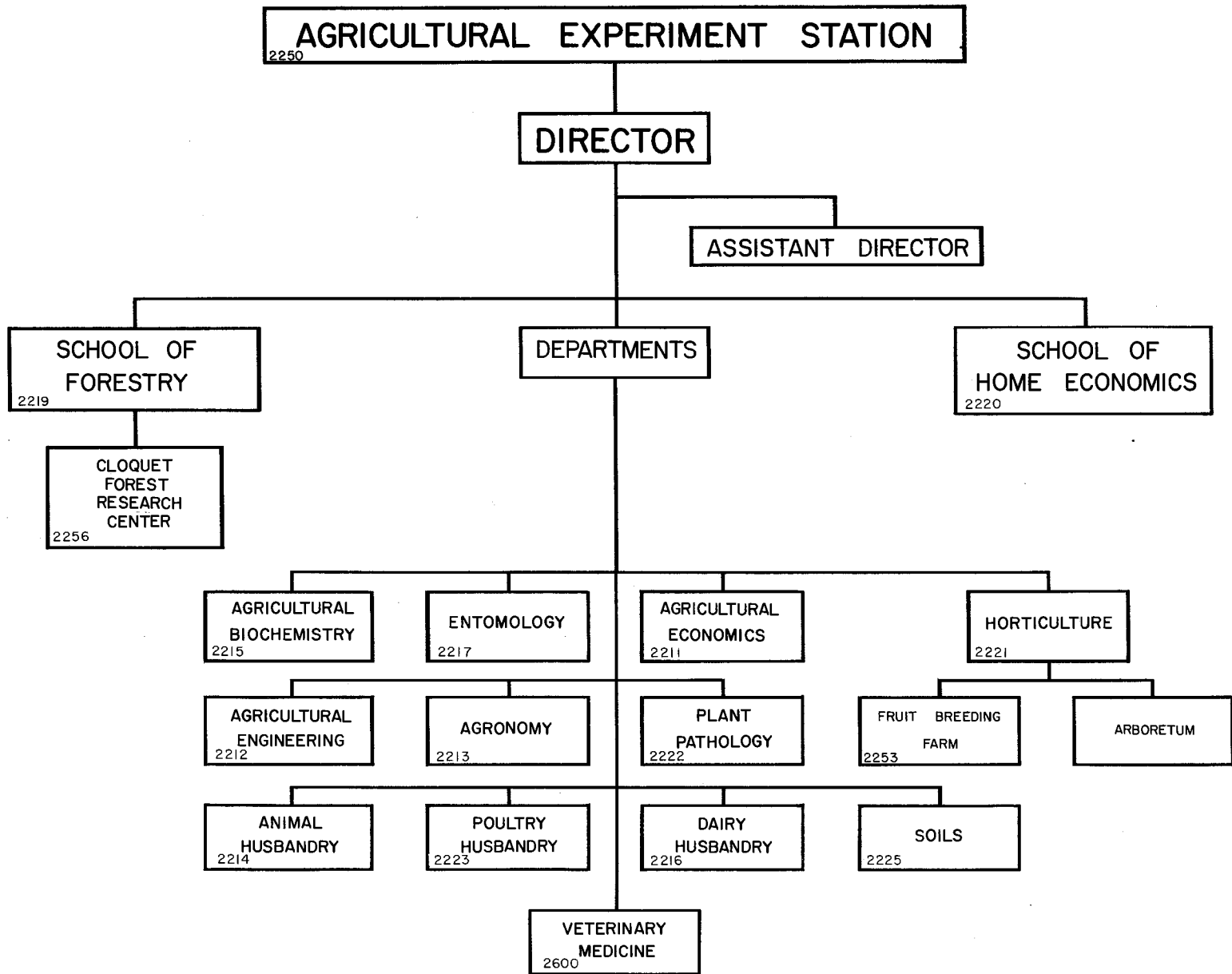




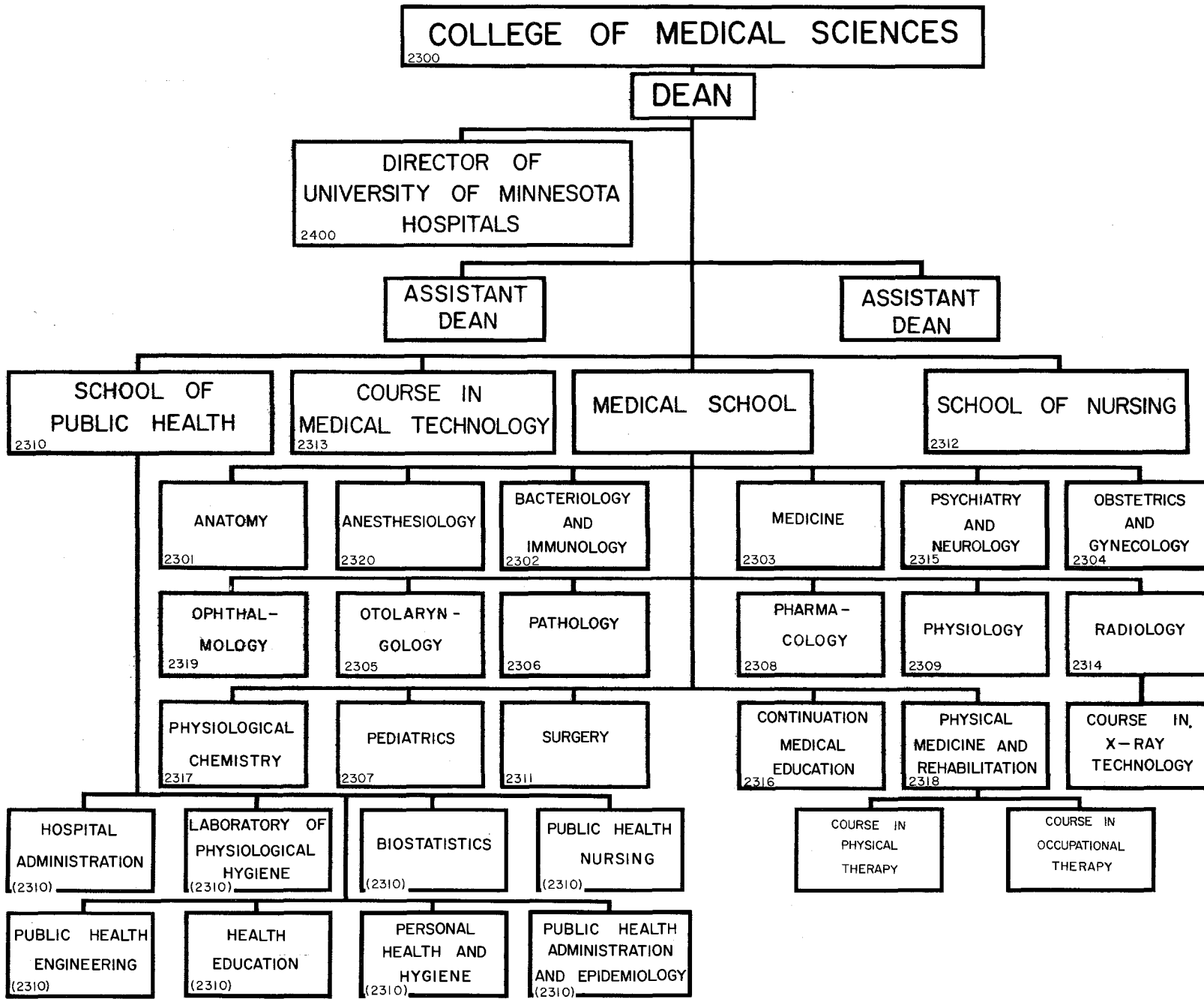




UNIVERSITY OF MINNESOTA ORGANIZATIONAL CHART



UNIVERSITY OF MINNESOTA ORGANIZATIONAL CHART



UNIVERSITY OF MINNESOTA ORGANIZATIONAL CHART

UNIVERSITY OF MINNESOTA HOSPITALS  
2400

DIRECTOR

ASSOCIATE DIRECTOR

PERSONNEL

ASSISTANT DIRECTOR

ASSISTANT DIRECTOR

ASSISTANT DIRECTOR

COFFEE SHOP (7401)  
ADMISSIONS (2400)  
CENTRAL INFORMATION DESK (2400)  
FISCAL AND BOOKKEEPING (2400) (2418)

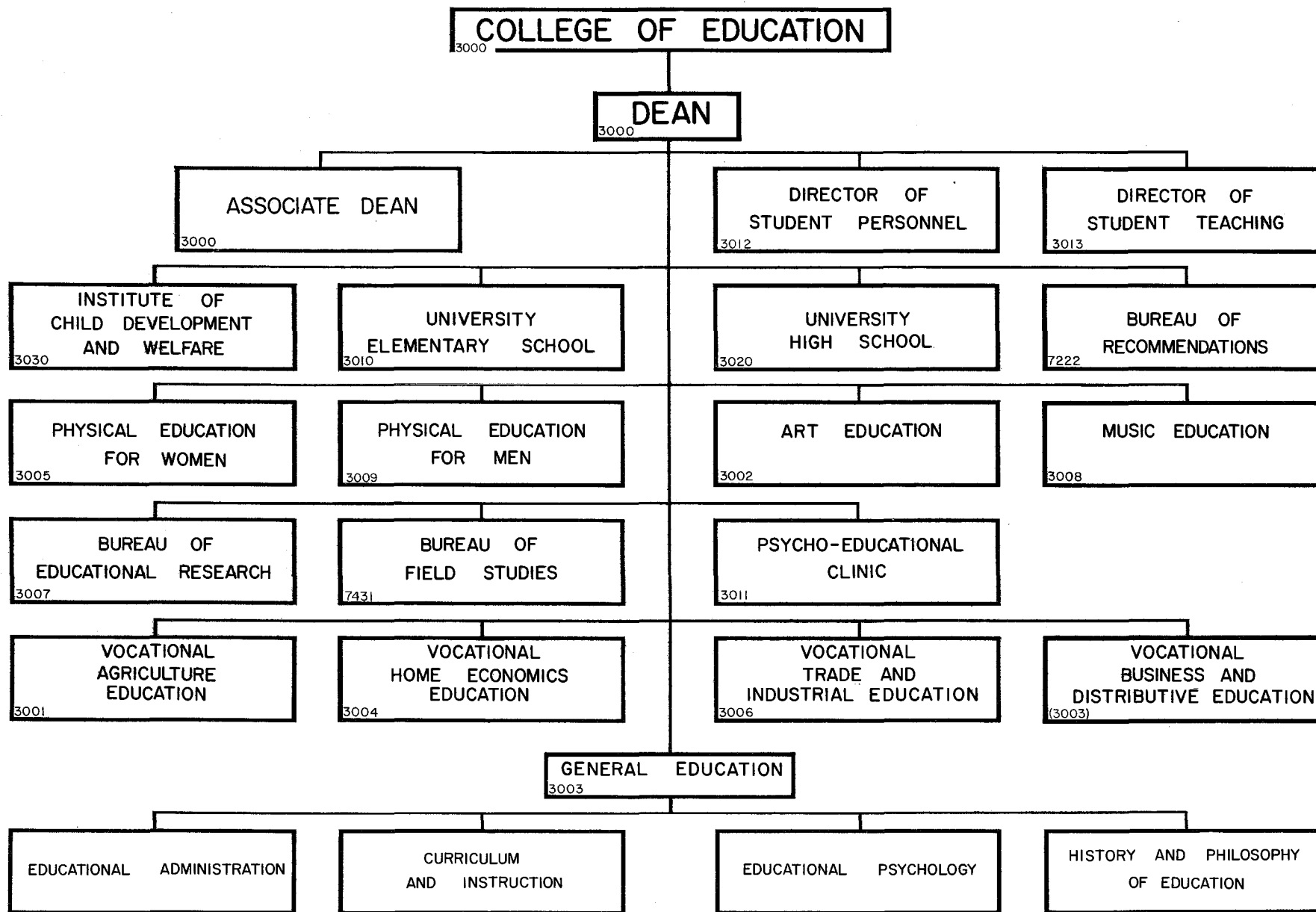
MASONIC MEMORIAL HOSPITAL (2470)  
CENTRAL SERVICE (2407)  
VARIETY CLUB HEART HOSPITAL (2400)

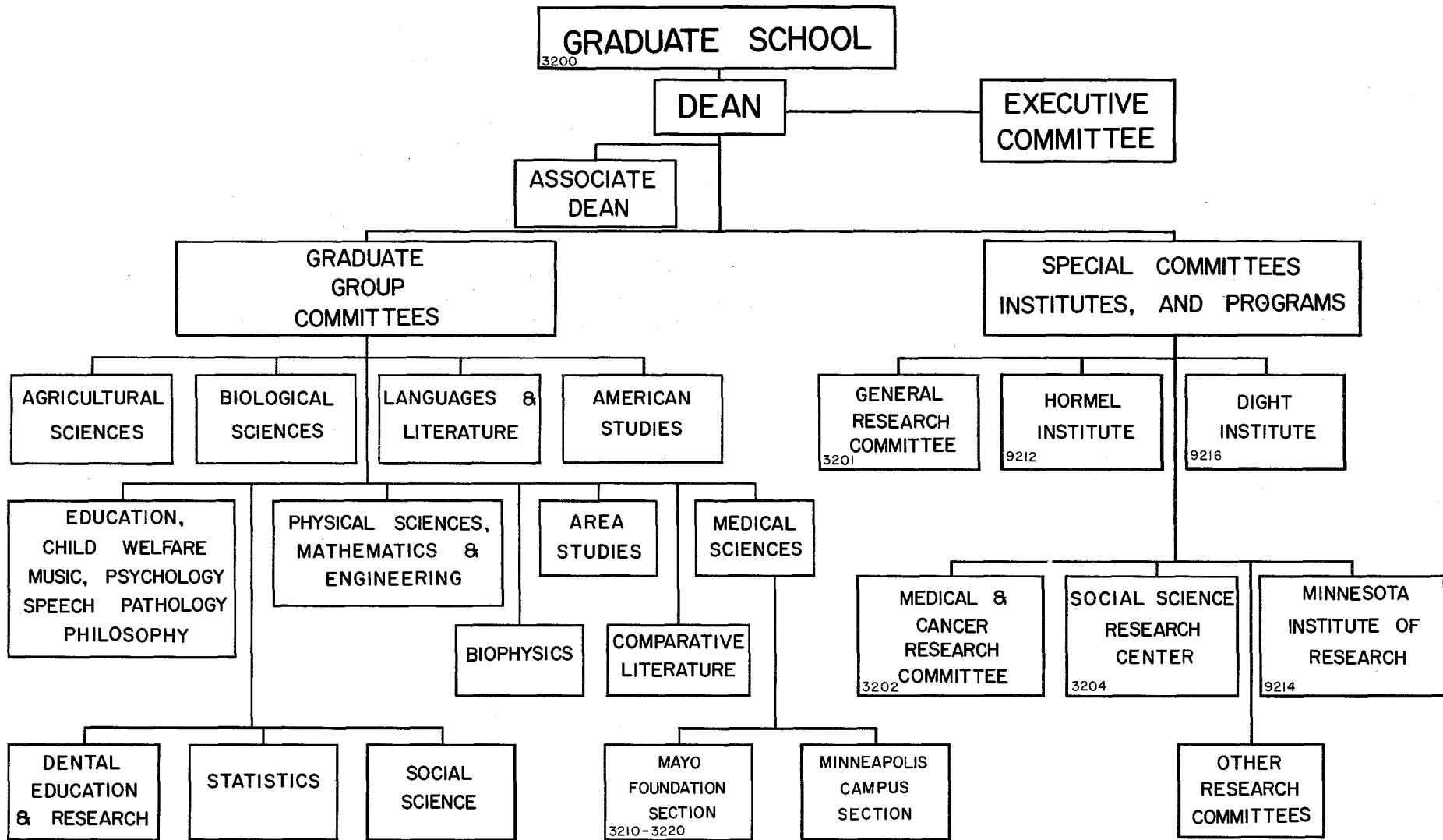
RECORD ROOM (2400)  
OUT-PATIENT DEPARTMENT (2433, 2460)  
MEDICAL ILLUSTRATION (7304)

HOUSEKEEPING (2411)  
MAINTENANCE (2414, 2415)  
SWITCHBOARD (2400)

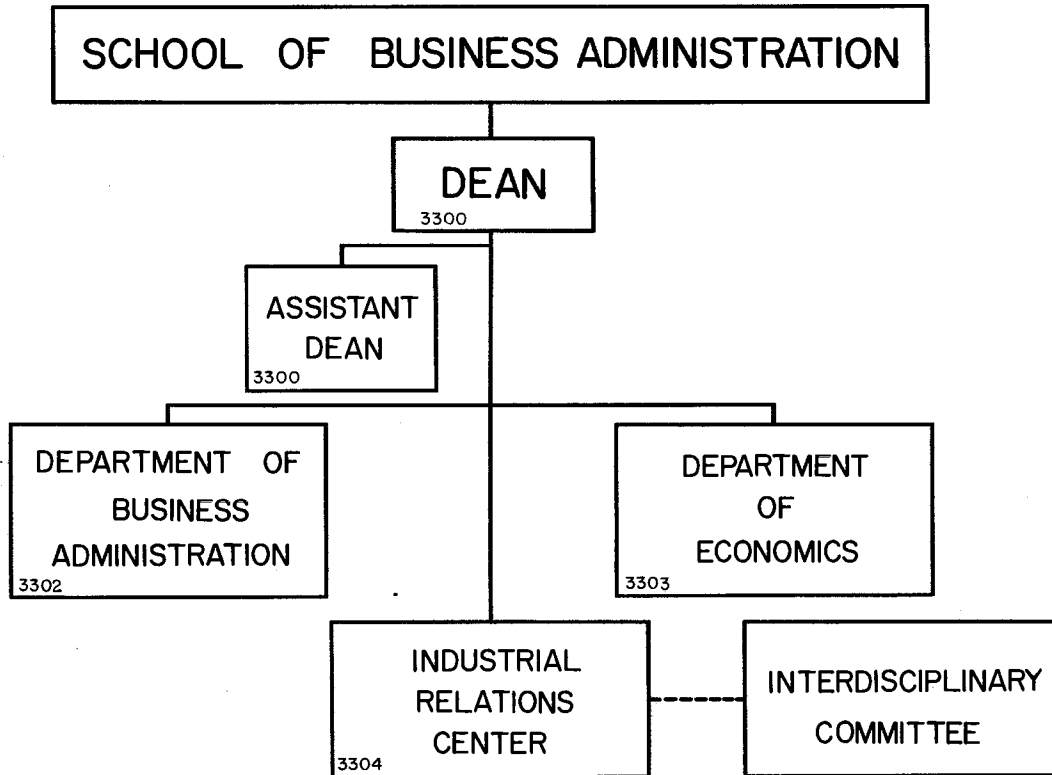
RADIOLOGY SERVICES (2402)  
DIETARY SERVICES (2409)  
PHARMACY (2408)  
LABORATORY SERVICES (2405, 2410)  
PHYSICAL MEDICINE AND REHABILITATION (2450)  
NURSING SERVICES (2401)  
SOCIAL SERVICE (2404)  
POWELL HALL (2406)

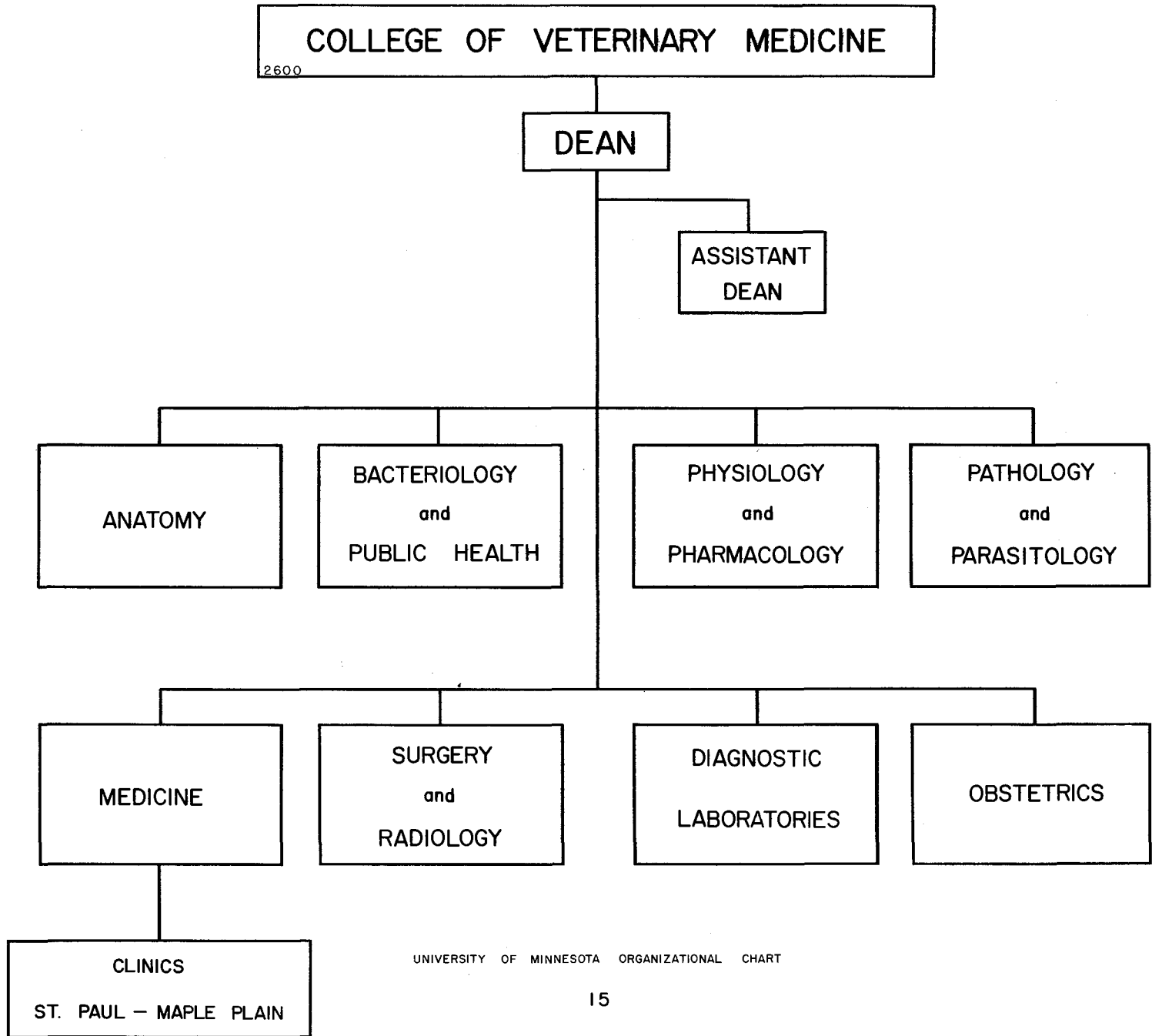
OCCUPATIONAL THERAPY  
PHYSICAL THERAPY

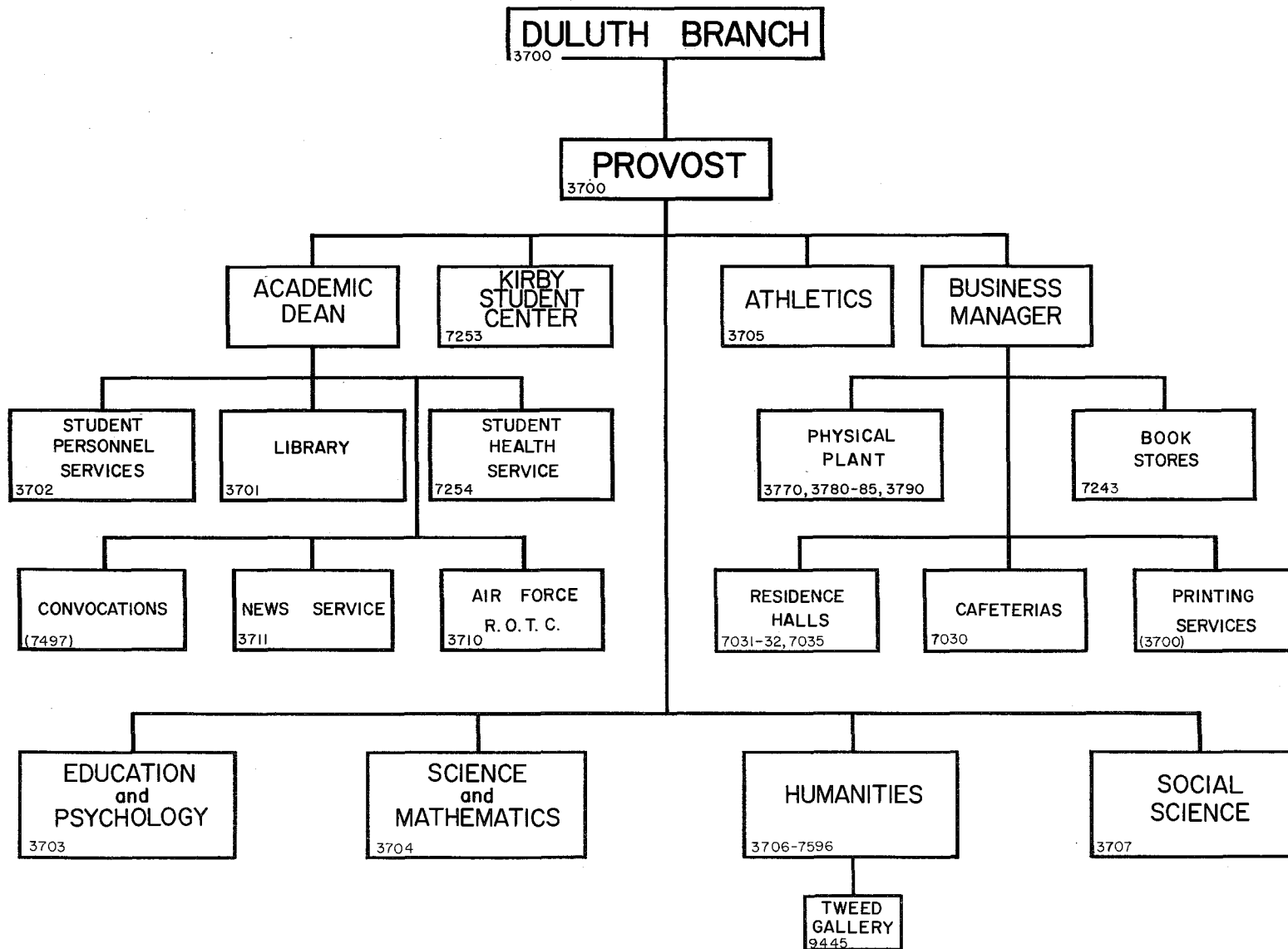


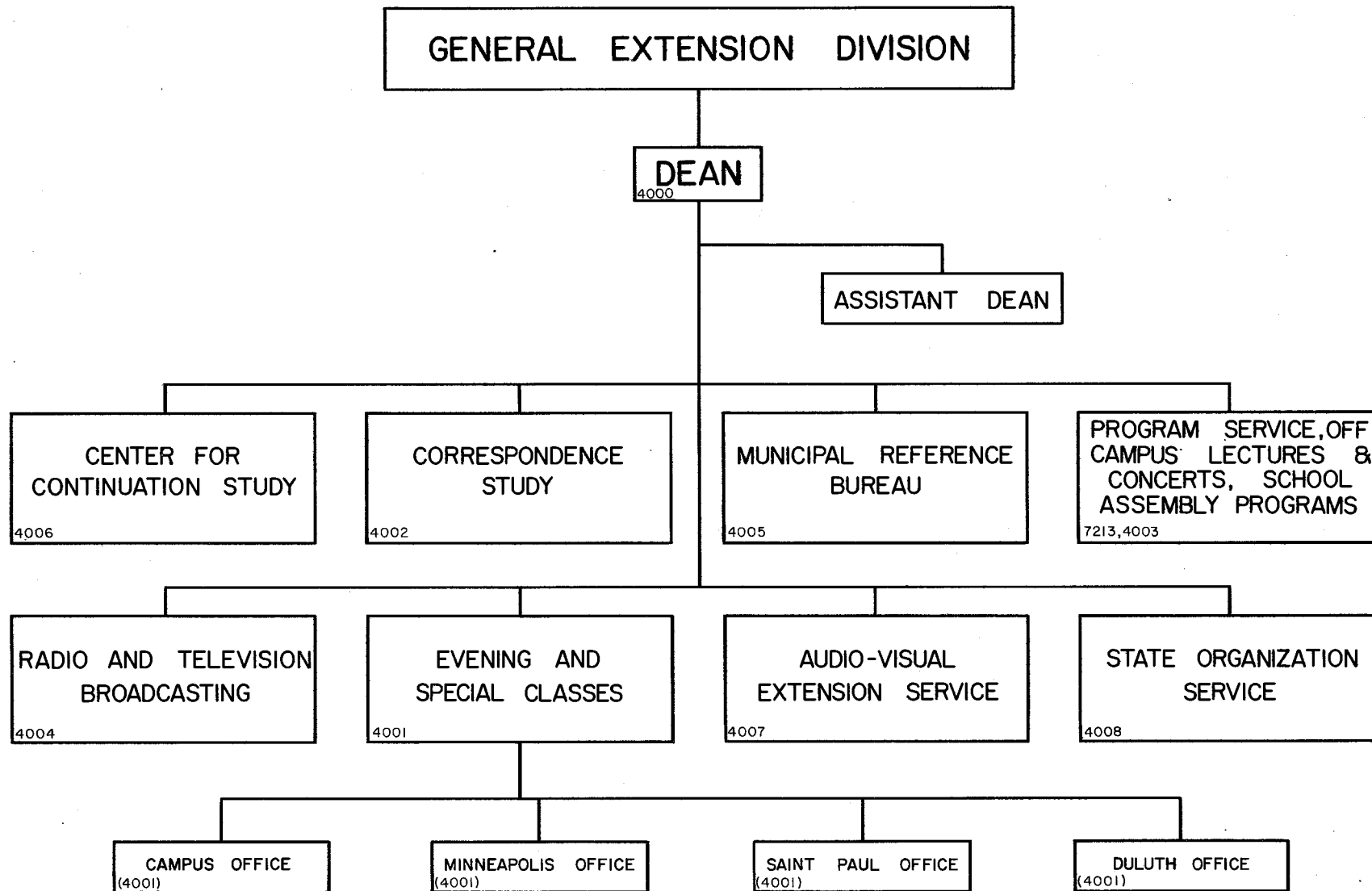










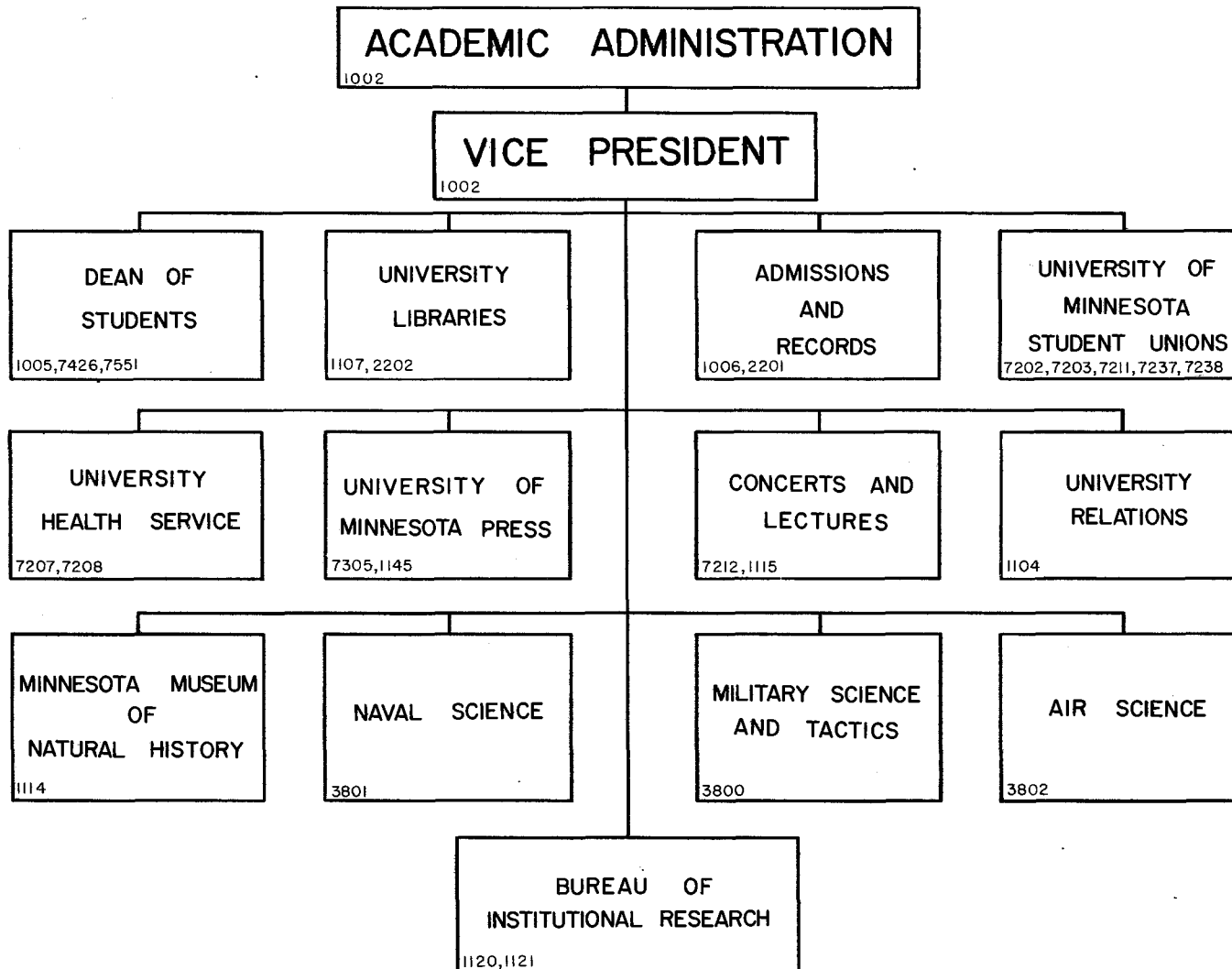


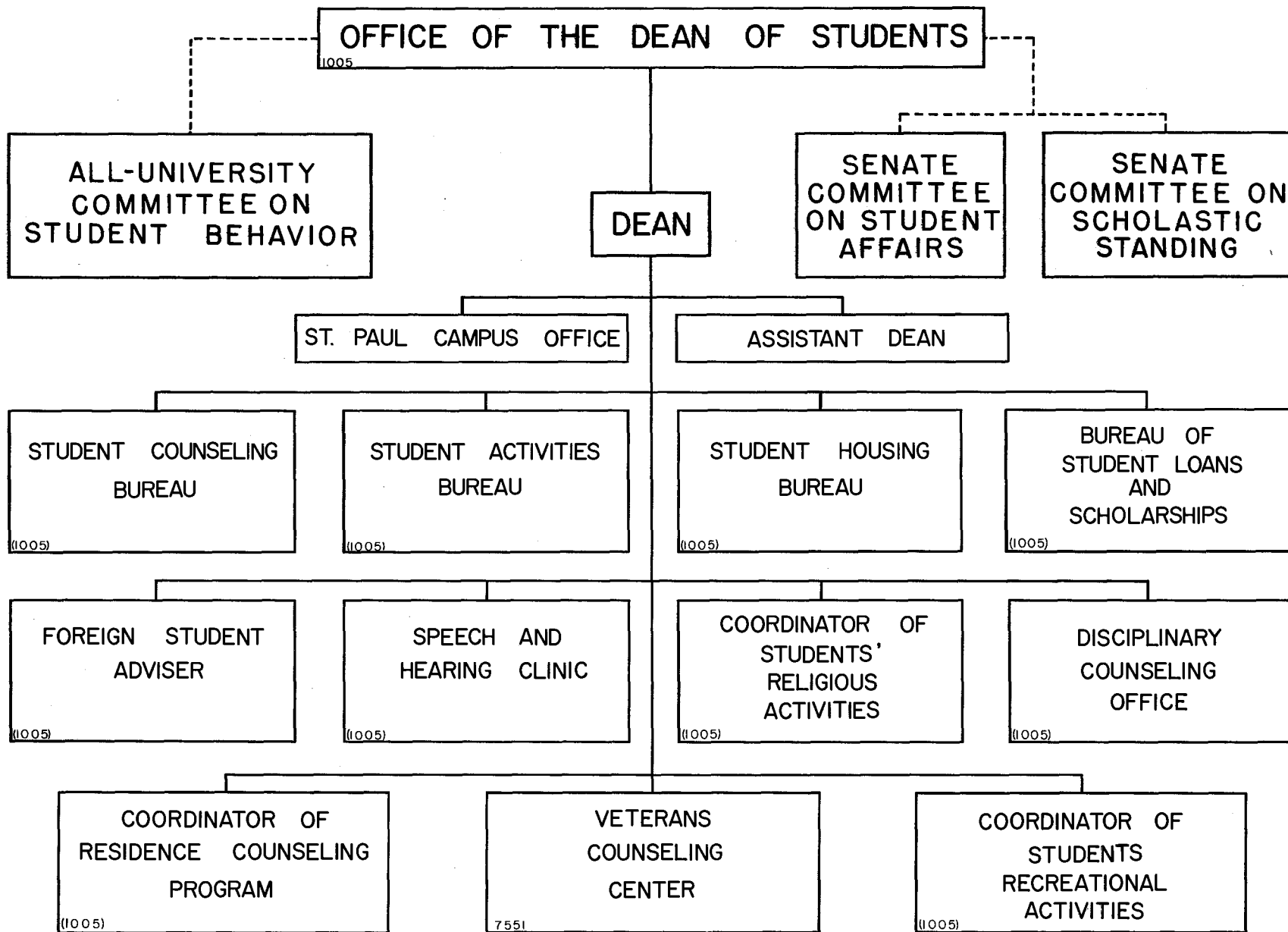
UNATTACHED DEPARTMENTS AND OFFICES

DEPARTMENT OF PHYSICAL EDUCATION  
AND ATHLETICS  
3900-3919, 7236, 7414, 7430

DEPARTMENT OF ALUMNI RELATIONS  
1100

GREATER UNIVERSITY FUND  
1157





1107 UNIVERSITY LIBRARIES

DIRECTOR

ASSOCIATE DIRECTOR

ACQUISITIONS DEPARTMENT

CATALOG DEPARTMENT

REFERENCE DEPARTMENT

CIRCULATION DEPARTMENT

BOOK SELECTION DIVISION

ACCOUNTING DIVISION

CATALOGING DIVISION

CARD DIVISION

REFERENCE ROOM

PERIODICAL ROOM

DESK SERVICE DIVISION

STACK SERVICE DIVISION

SERIALS DIVISION

ARCHIVES DIVISION

MAP ROOM

RESERVE BOOK DIVISION

ARTHUR UPSON ROOM

INSTITUTE OF TECHNOLOGY

2202 INSTITUTE OF AGRICULTURE

9414 JAMES FORD BELL COLLECTION

BIO-MEDICAL LIBRARY

ENGINEERING

CHEMISTRY

ARCHITECTURE

MAIN AGRICULTURAL LIBRARY

ENTOMOLOGY AND ECONOMIC ZOOLOGY

MAIN BIO-MEDICAL LIBRARY

PHARMACY

MATHEMATICS PHYSICS

MINES AND METALLURGY

PLANT PATHOLOGY

BIOCHEMISTRY

FORESTRY

VETERINARY MEDICINE

OTHER DEPARTMENTAL LIBRARIES

CHIEF BIBLIOGRAPHER

AFFILIATED DEPARTMENTAL LIBRARIES

ART

MUSIC

GEOLOGY

SPECIAL COLLECTIONS DIVISION

NEWS PAPER ROOM

LAW

JOURNALISM

PUBLIC ADMINISTRATION CENTER

FRESHMAN-SOPHOMORE

EDUCATION

LIBRARY SCHOOL

UNIVERSITY HIGH SCHOOL

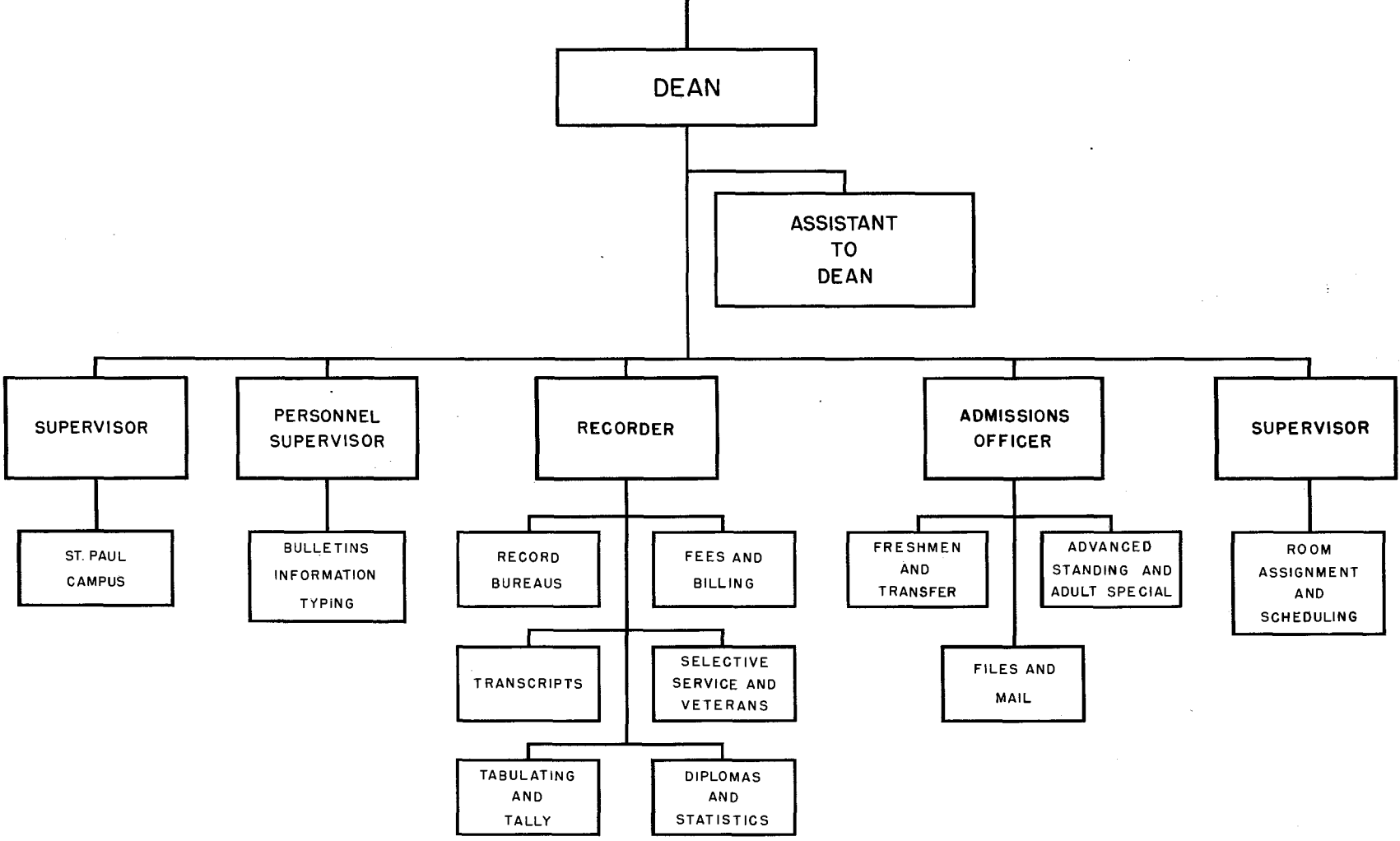
DULUTH BRANCH

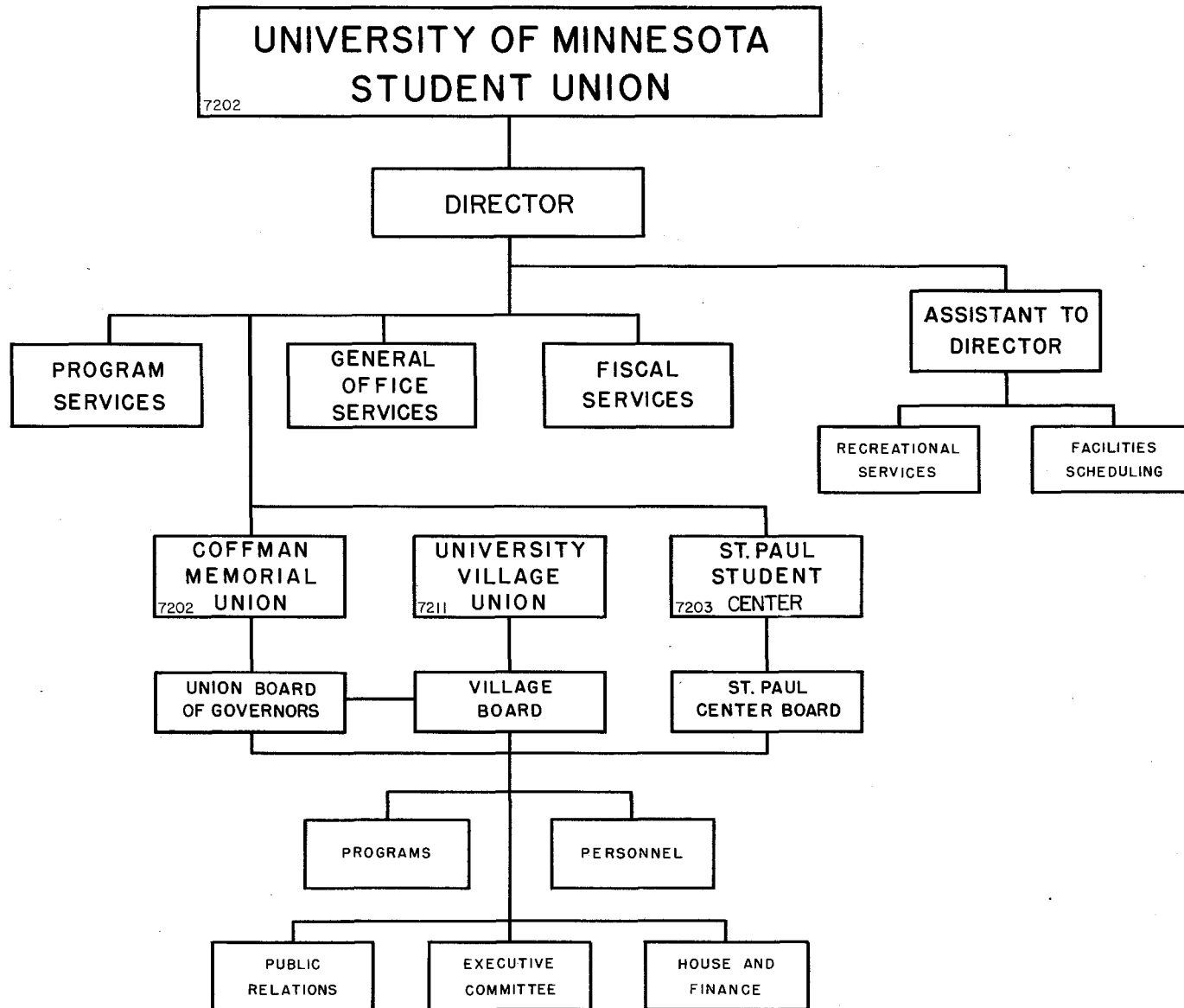
AGRICULTURAL SCHOOLS AND STATIONS



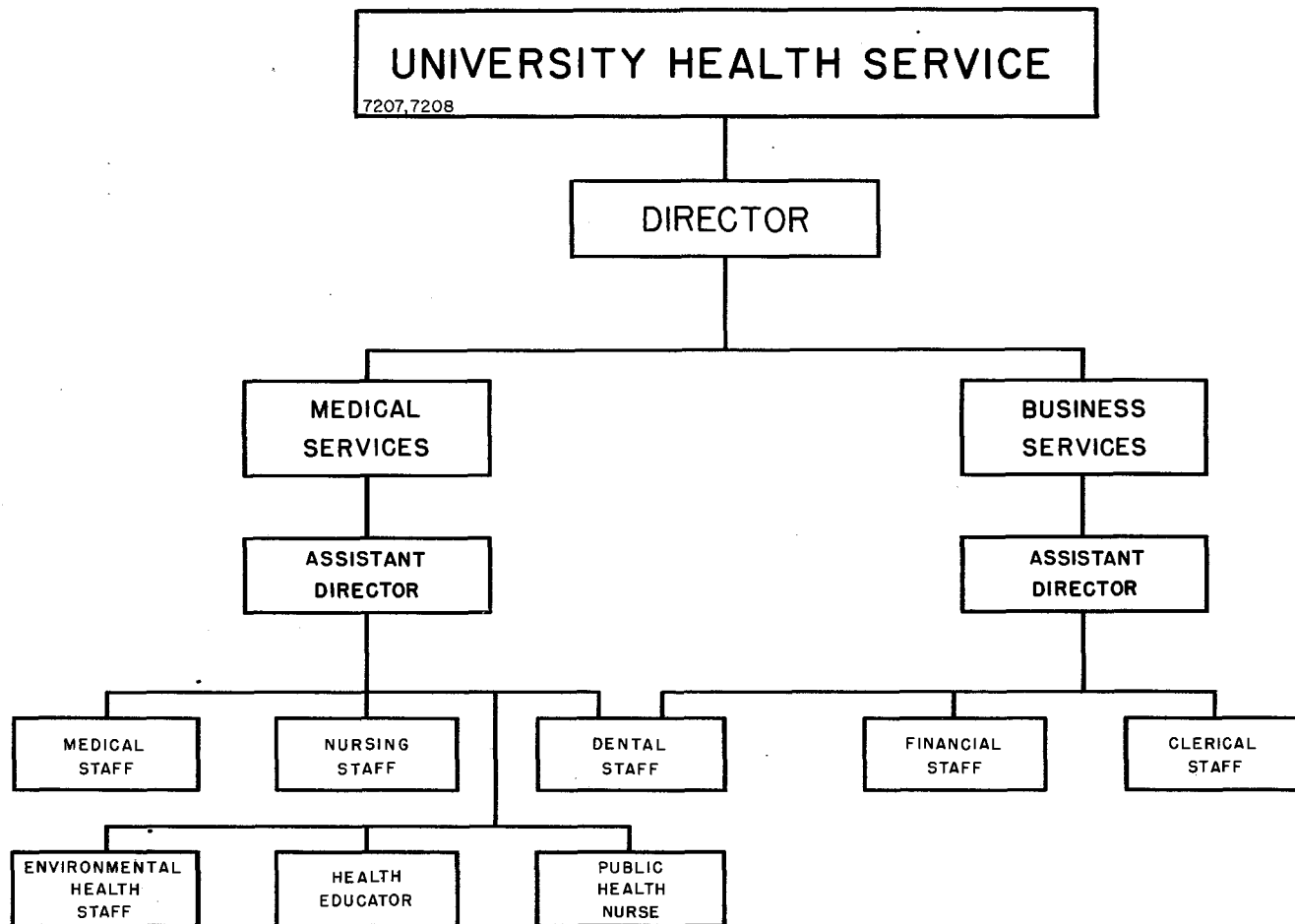
1006

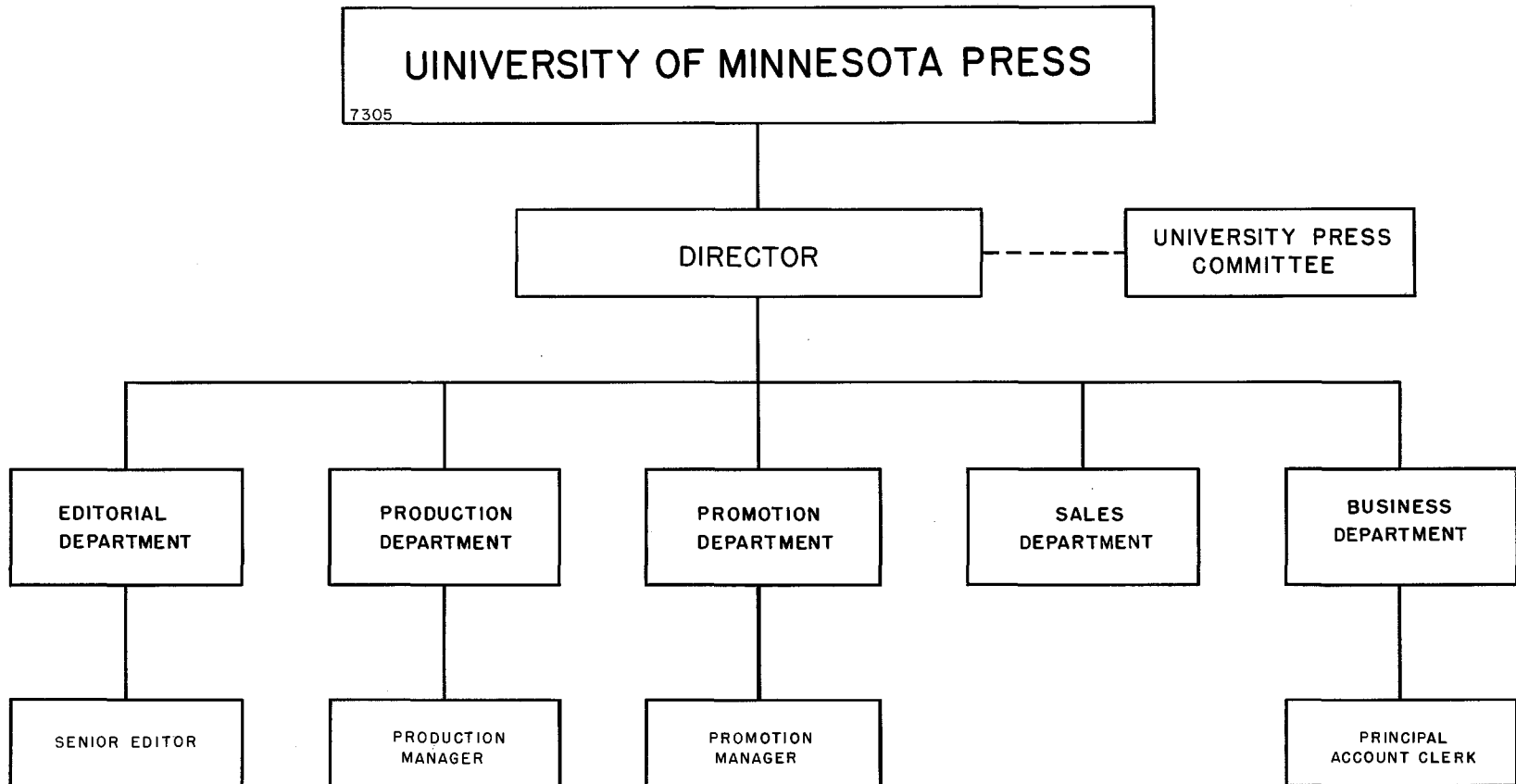
# OFFICE OF ADMISSIONS AND RECORDS



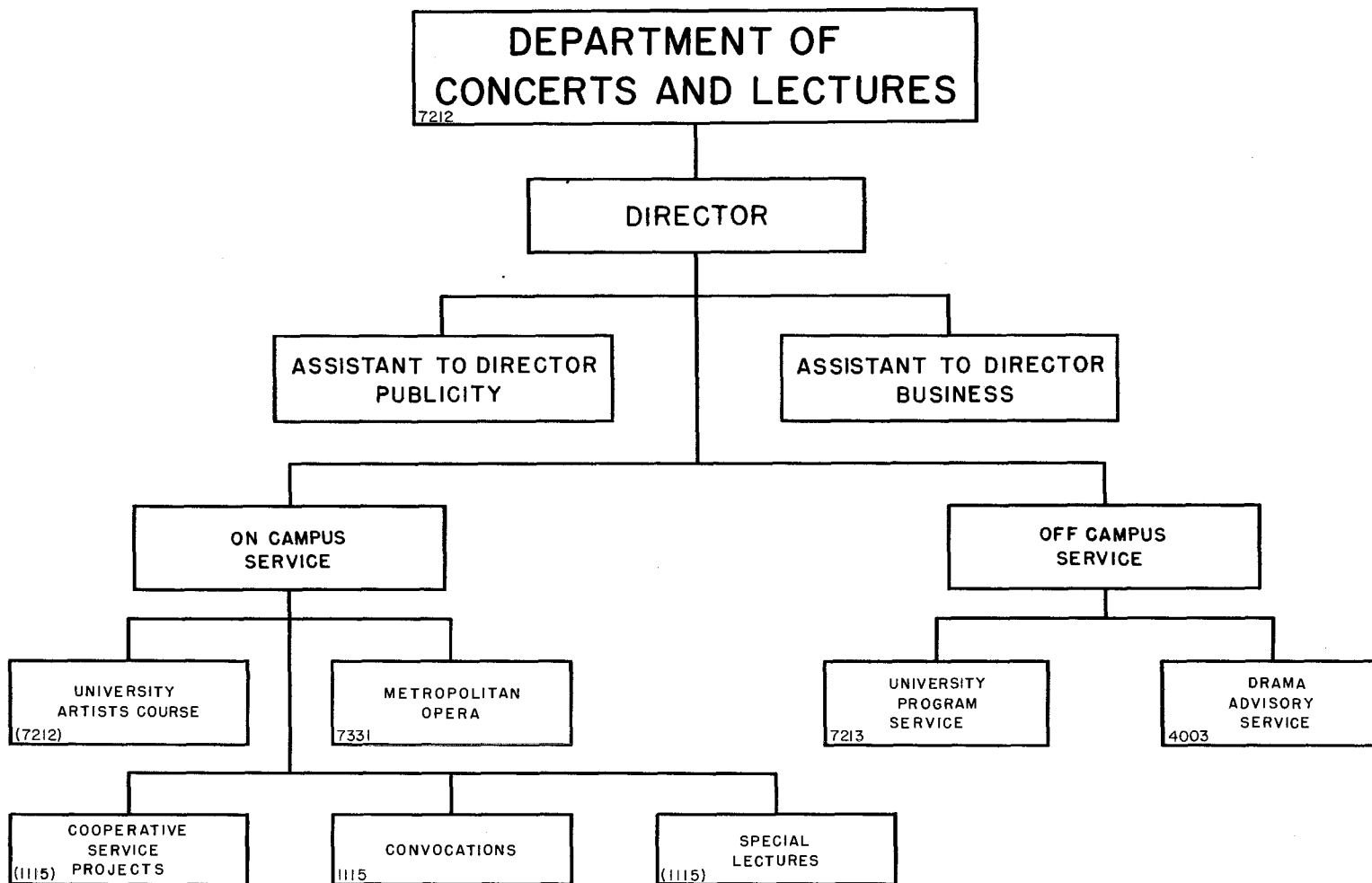


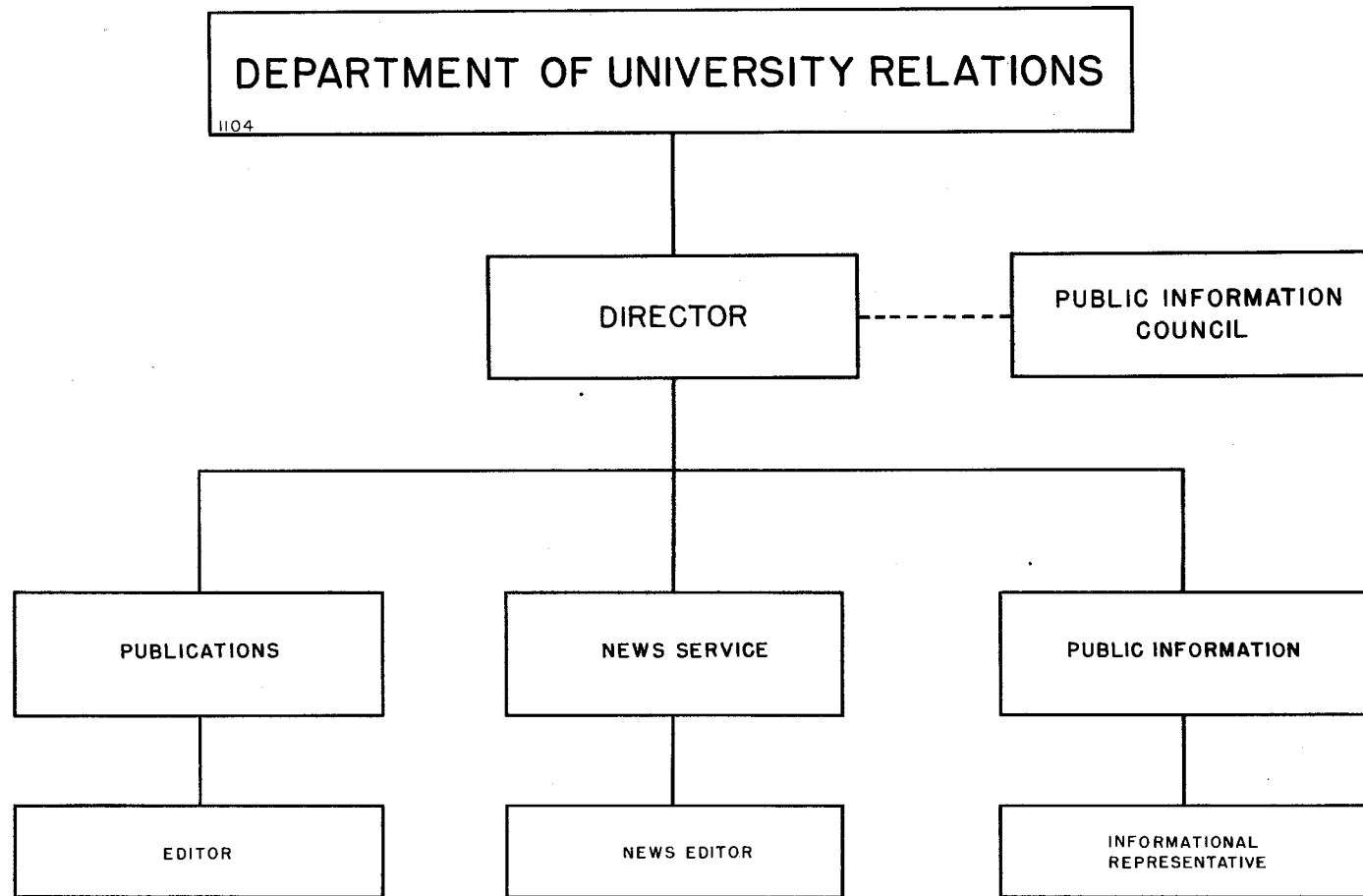
UNIVERSITY OF MINNESOTA ORGANIZATIONAL CHART



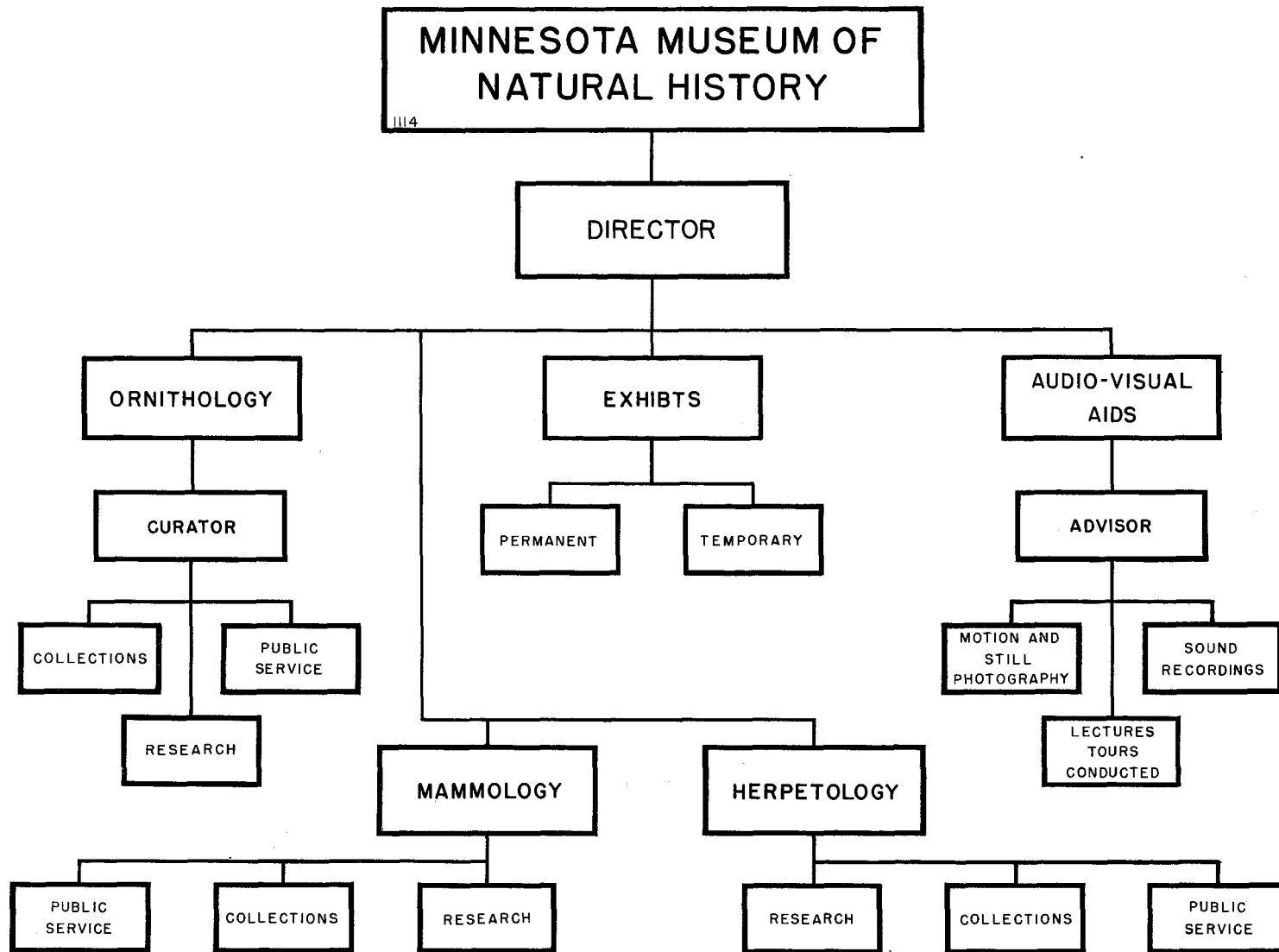


UNIVERSITY OF MINNESOTA ORGANIZATIONAL CHART

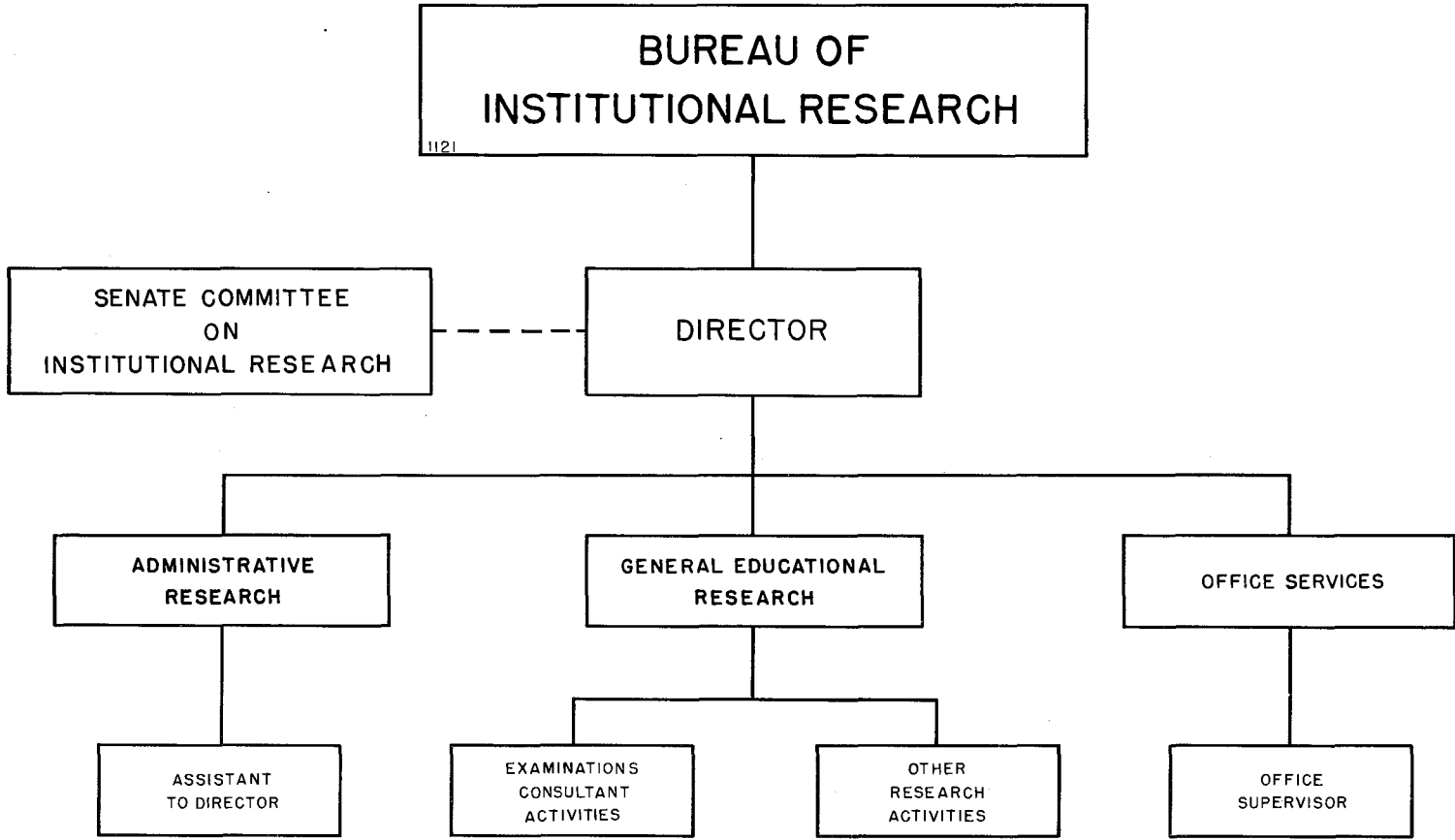




UNIVERSITY OF MINNESOTA ORGANIZATIONAL CHART

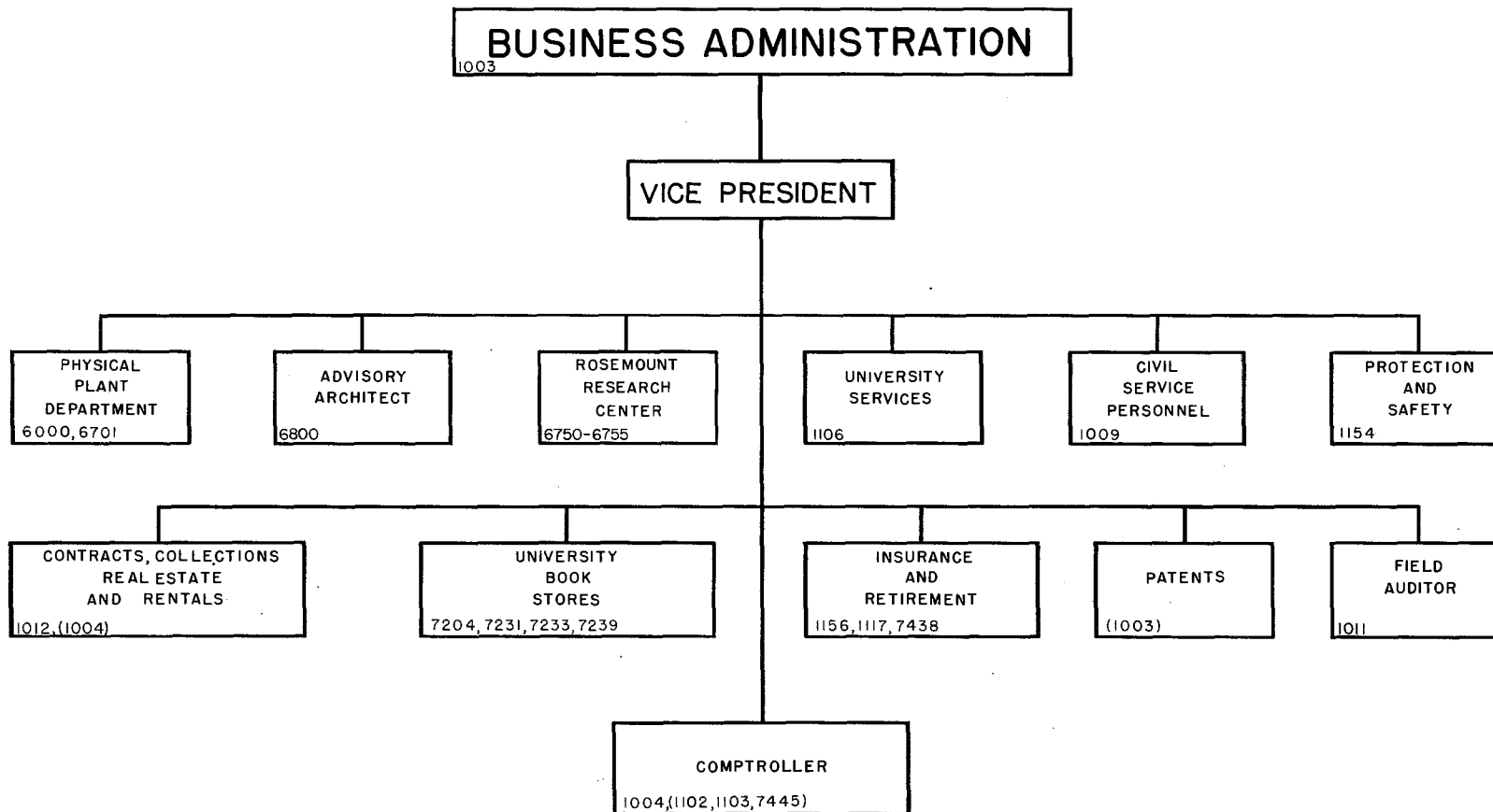


UNIVERSITY OF MINNESOTA ORGANIZATIONAL CHART

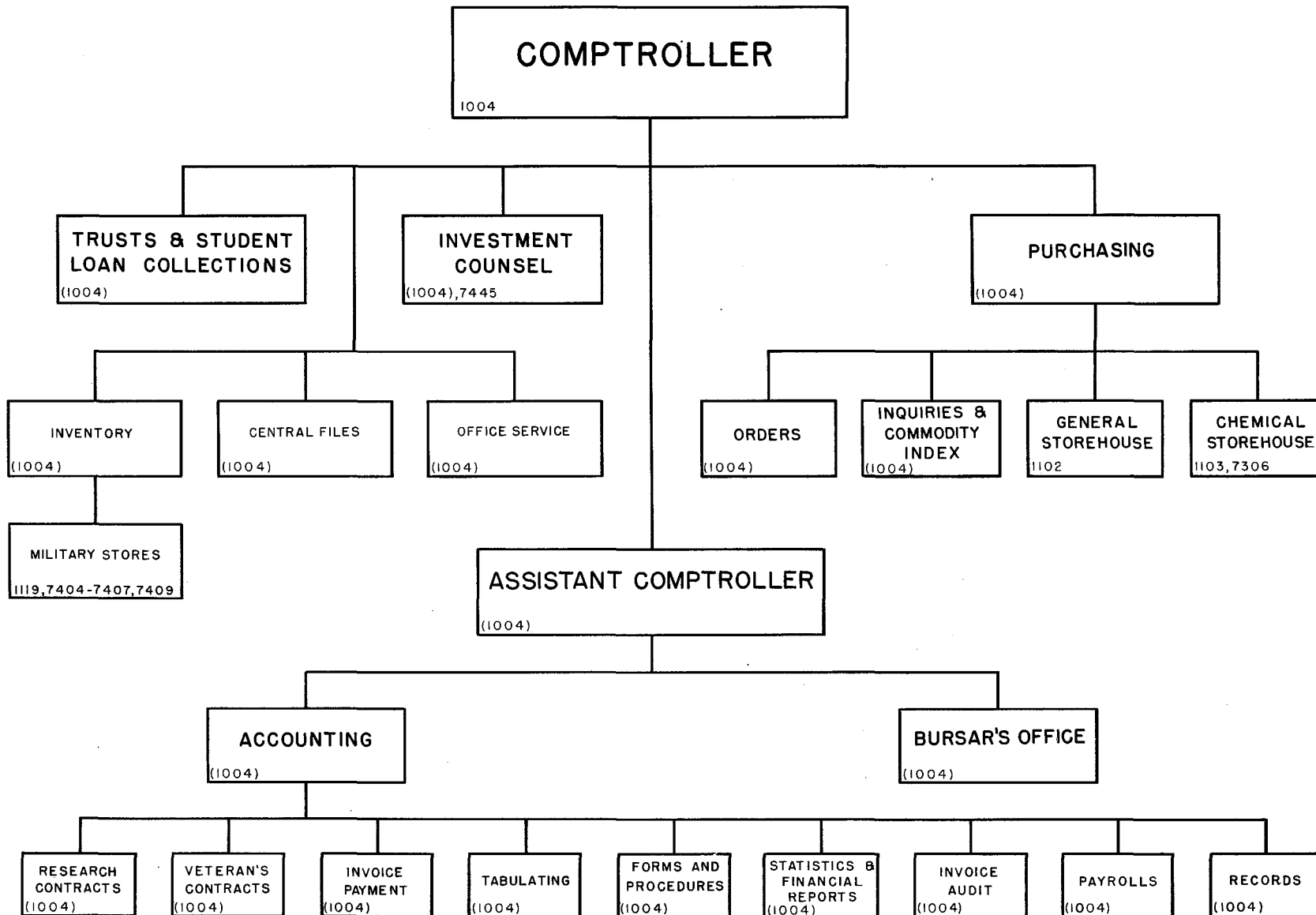


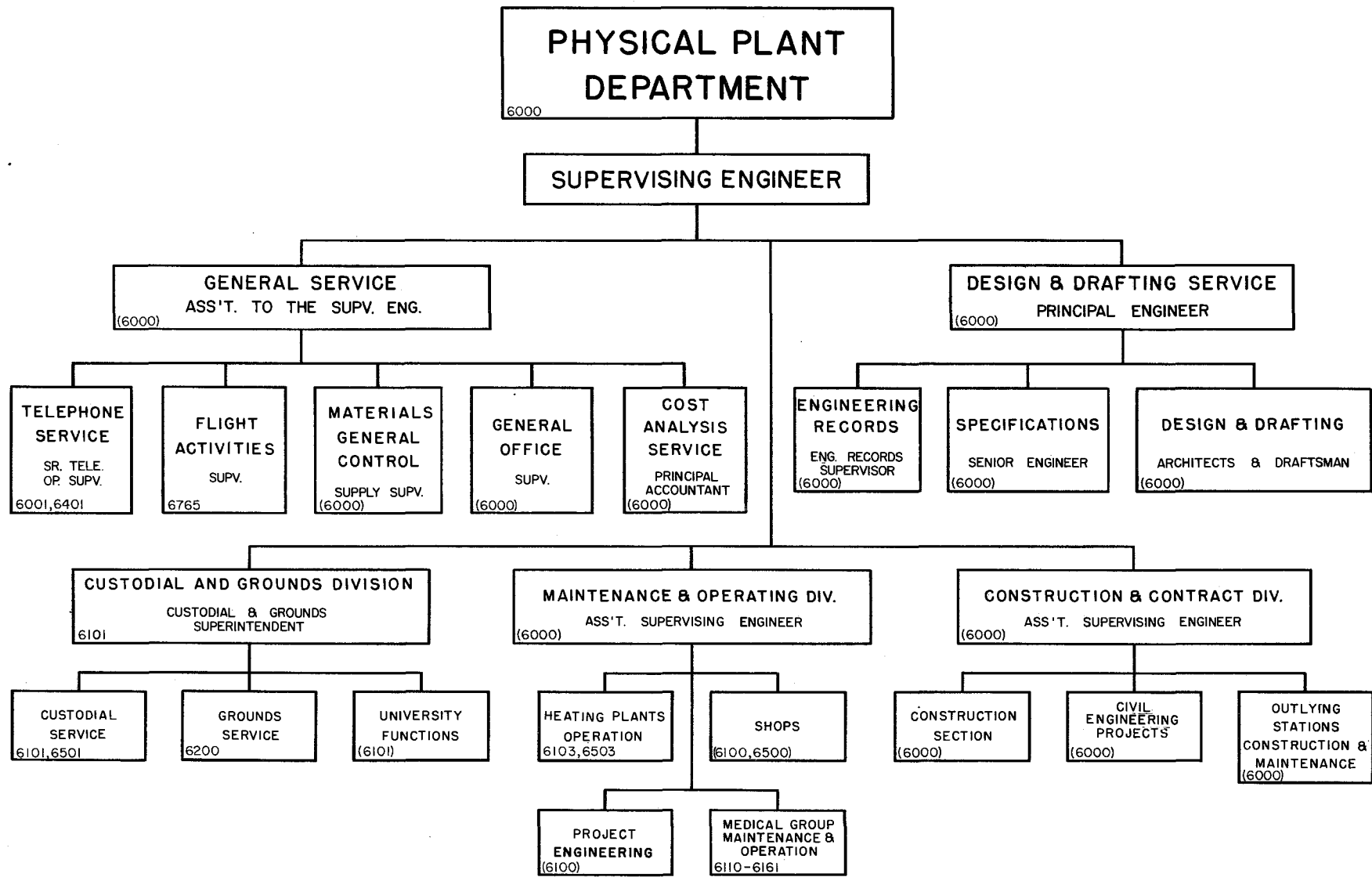
UNIVERSITY OF MINNESOTA ORGANIZATIONAL CHART



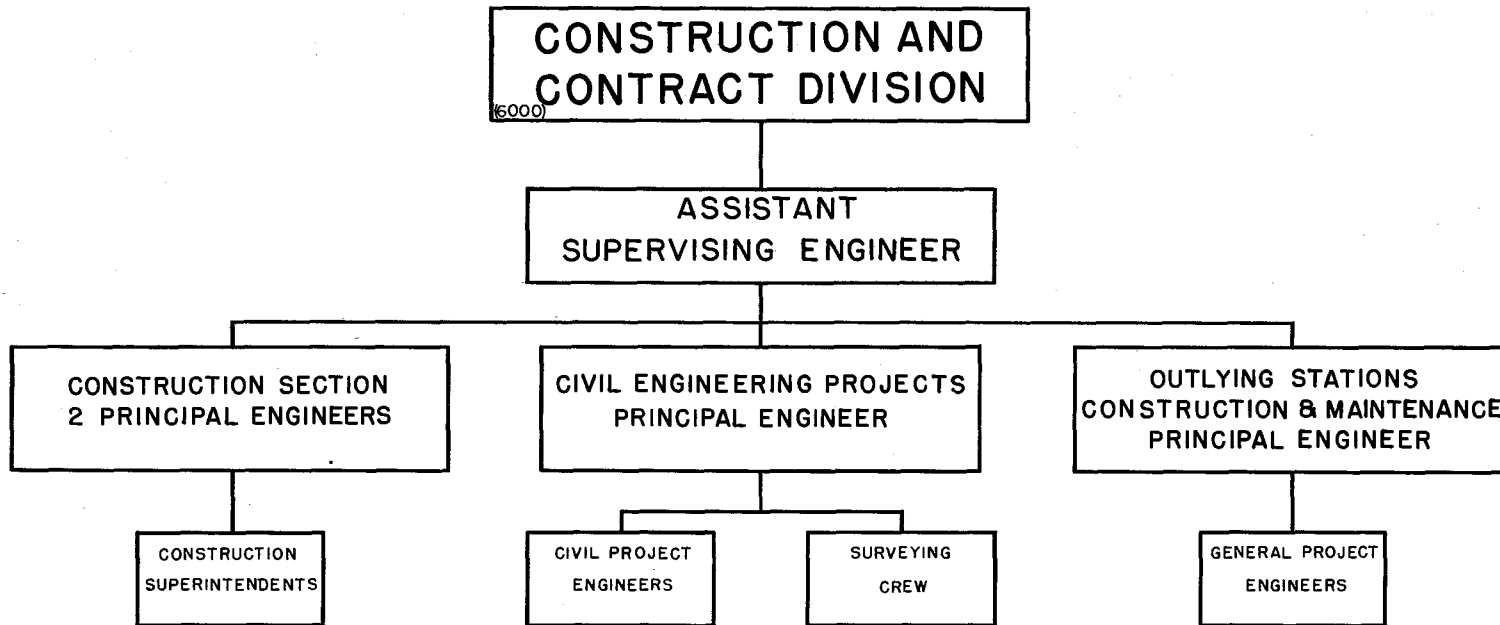


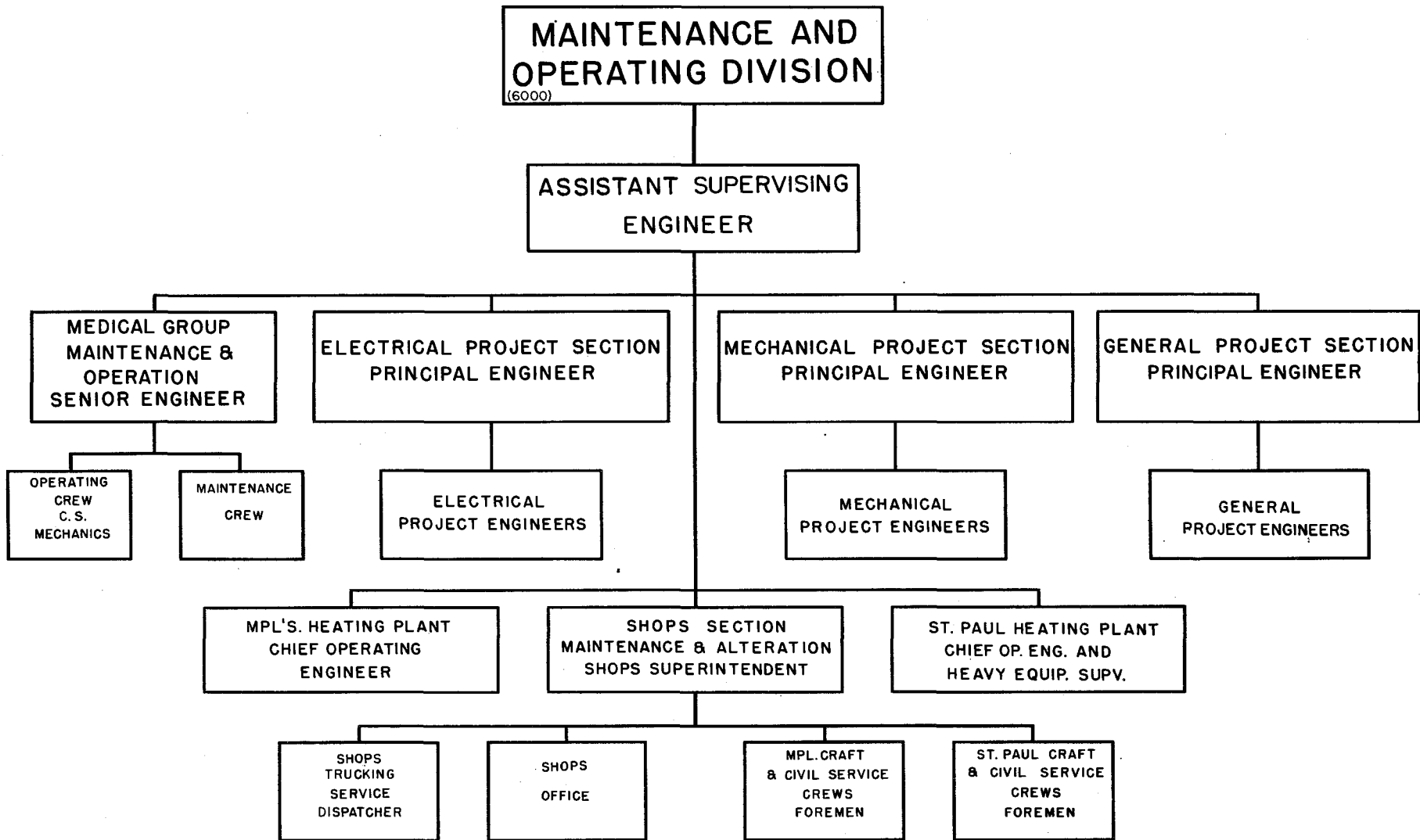
UNIVERSITY OF MINNESOTA ORGANIZATIONAL CHART



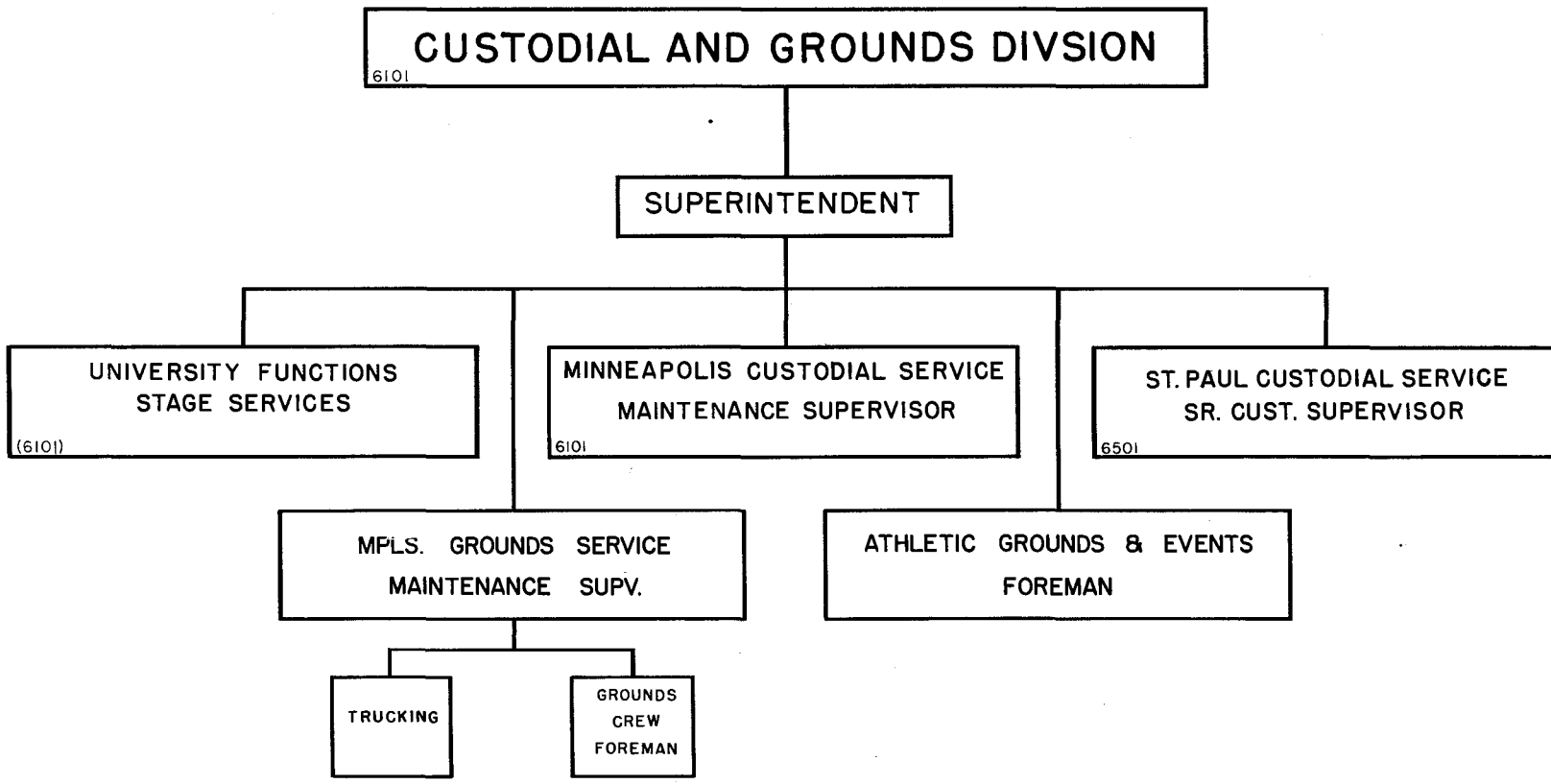


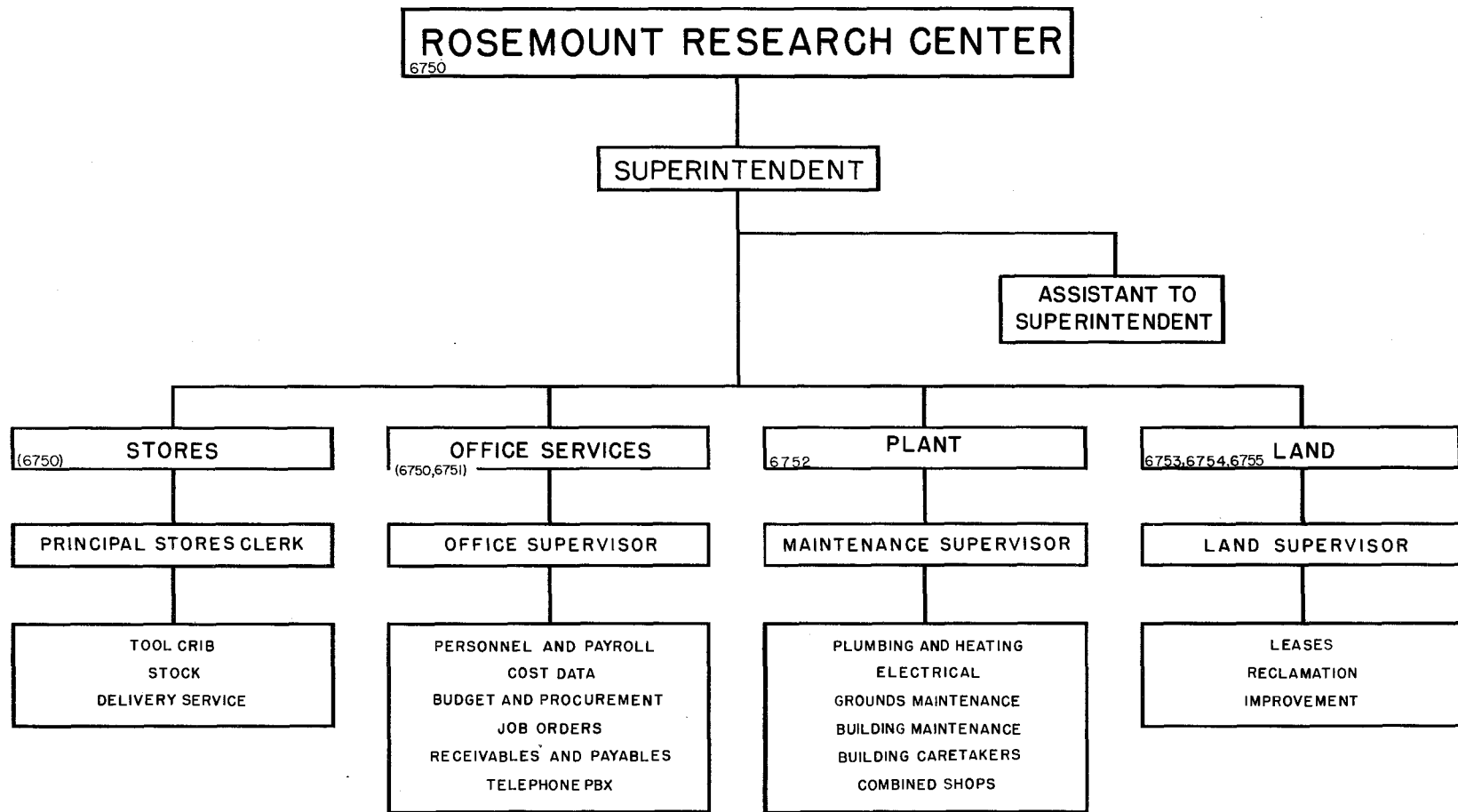
UNIVERSITY OF MINNESOTA ORGANIZATIONAL CHART





UNIVERSITY OF MINNESOTA ORGANIZATIONAL CHART

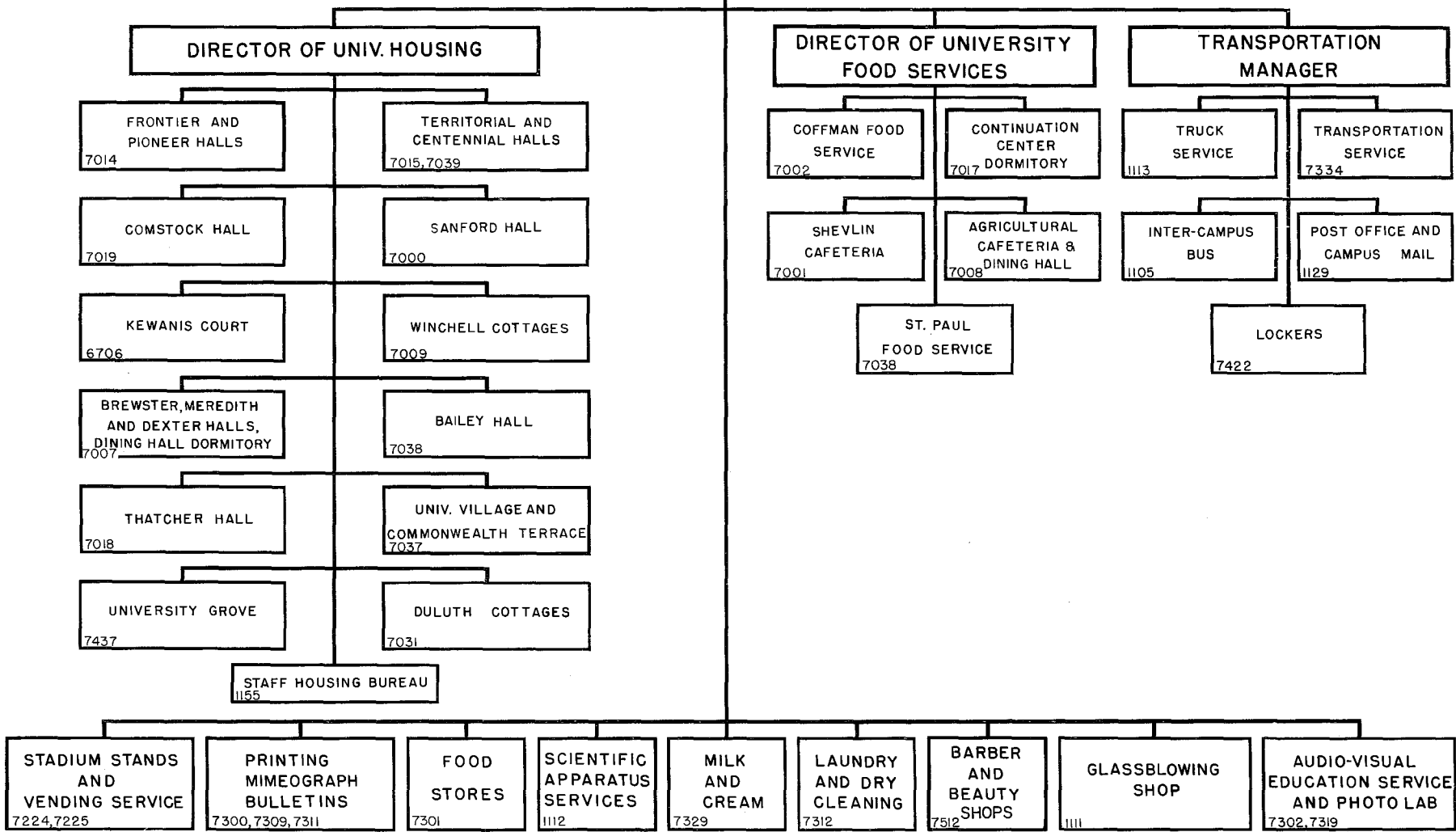




# UNIVERSITY SERVICES

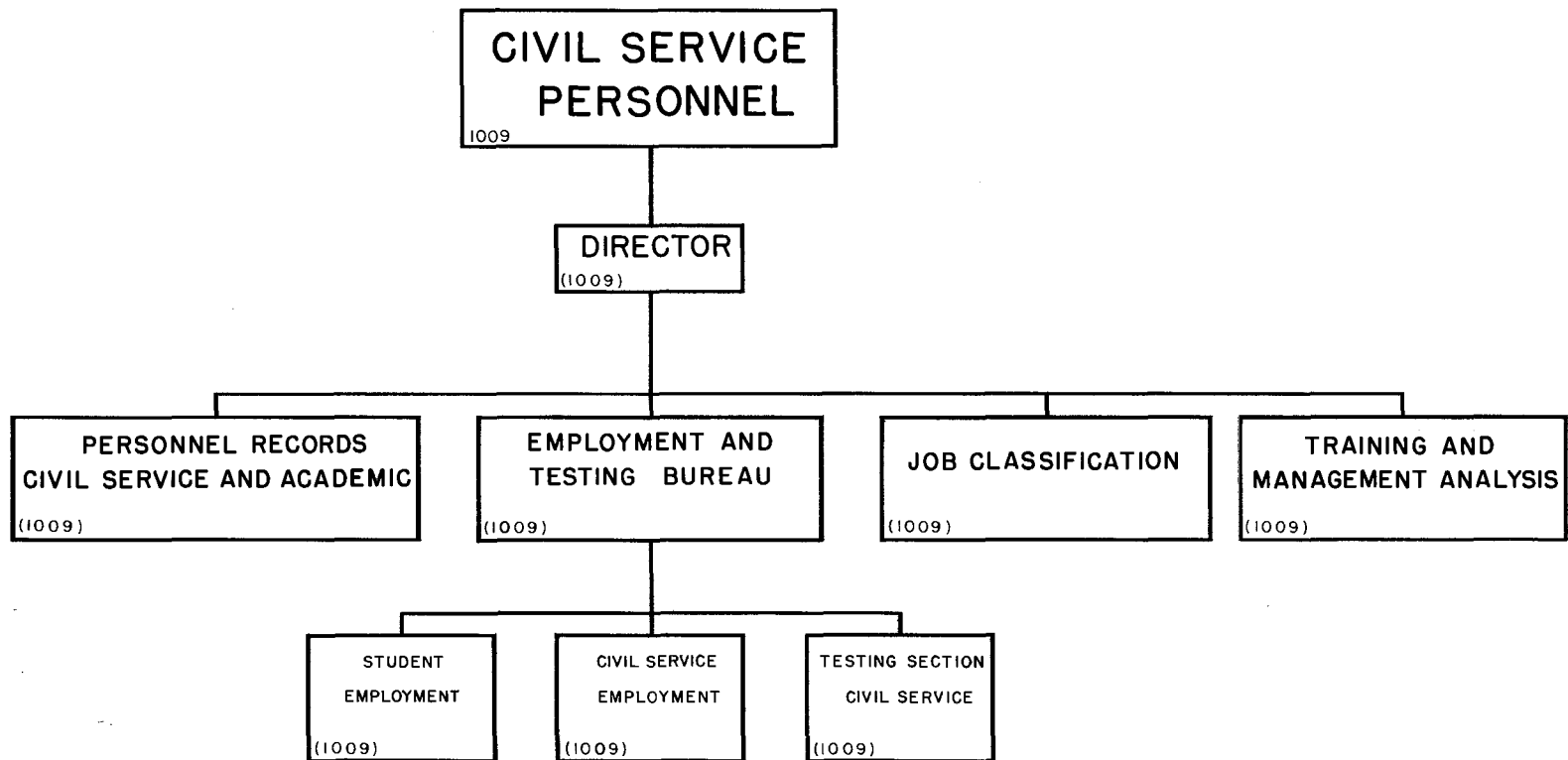
1106

DIRECTOR

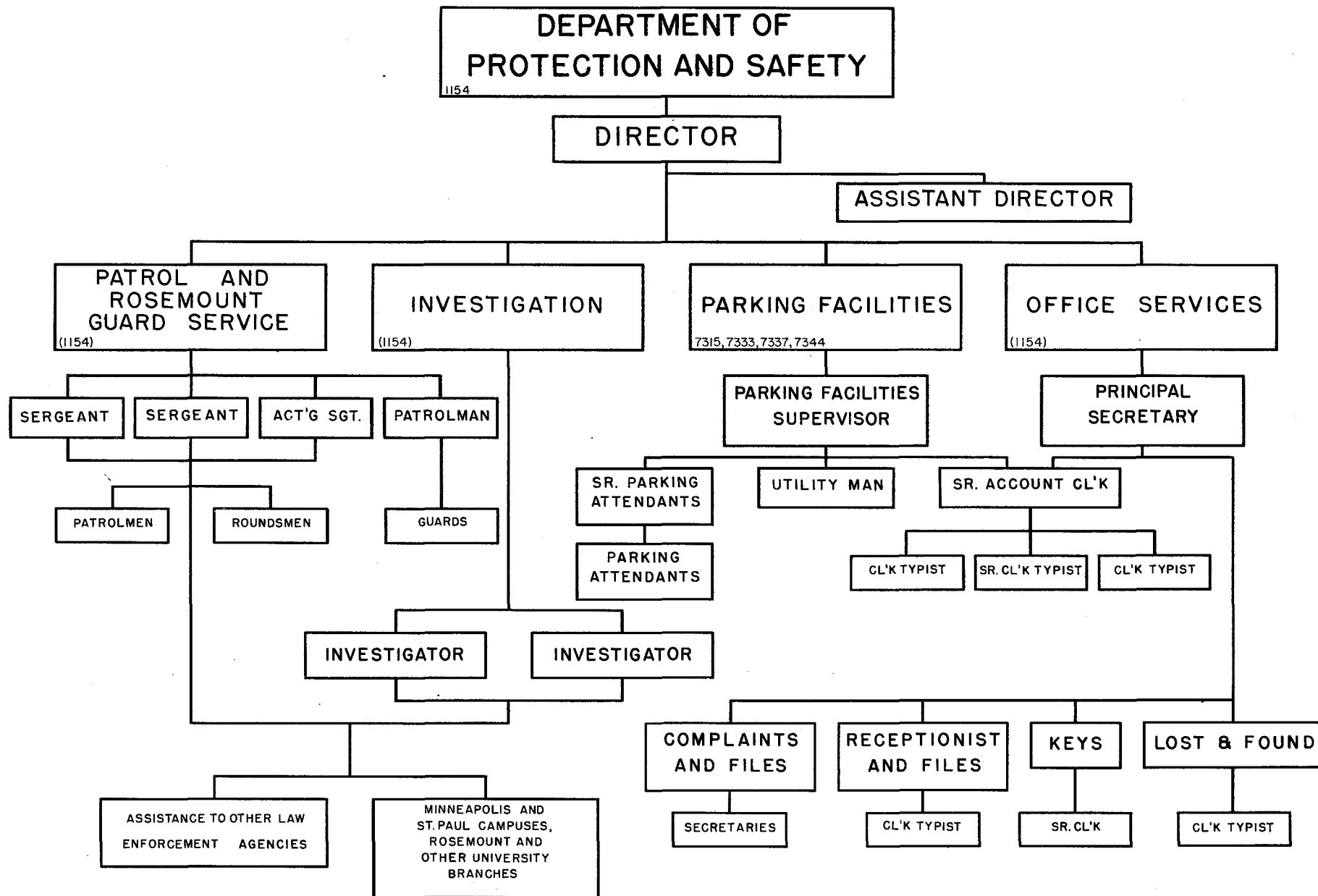


UNIVERSITY OF MINNESOTA ORGANIZATIONAL CHART

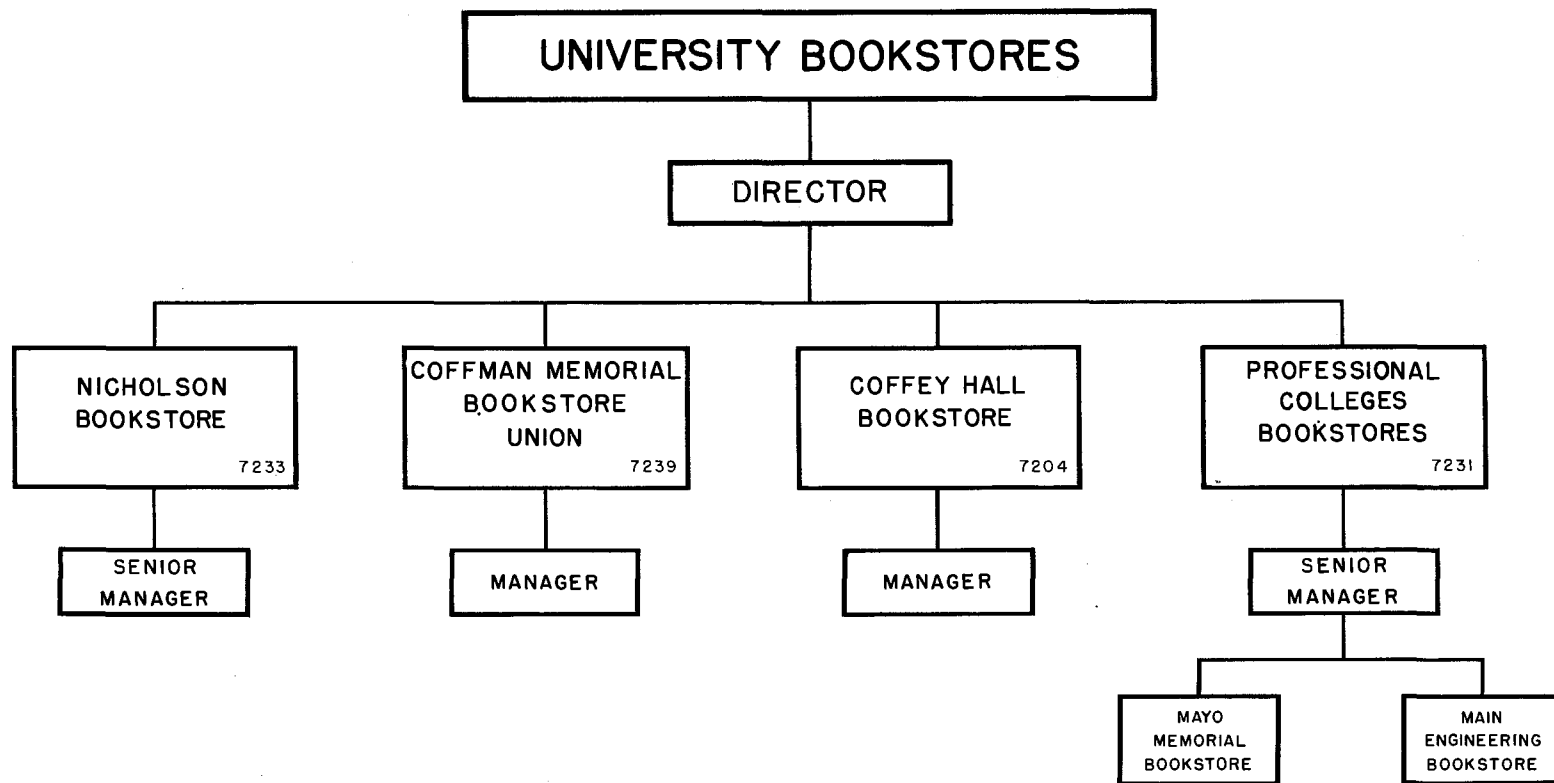




UNIVERSITY OF MINNESOTA ORGANIZATIONAL CHART



UNIVERSITY OF MINNESOTA ORGANIZATIONAL CHART



1156  
**DEPARTMENT OF INSURANCE AND RETIREMENT**

**DIRECTOR**

**ASSISTANT DIRECTOR**

**FACULTY  
RETIREMENT AND  
SOCIAL SECURITY**  
1117

**CIVIL SERVICE  
RETIREMENT AND  
SOCIAL SECURITY**  
1117

**HOSPITALIZATION  
AND  
MEDICAL-SURGICAL**  
(1156)

**GROUP  
LIFE INSURANCE**  
7438

**SELF-INSURED  
WORKMEN'S COMPENSATION  
CLAIMS**  
1130

**INSURANCE  
FIRE AND EXTENDED COVERAGE  
VARIOUS ALL RISKS  
PROPERTY FLOATERS  
BONDING, ACCIDENT**  
7490

**INSURANCE  
MOTOR VEHICLE  
BOILER AIRCRAFT  
WORKMEN'S COMPENSATION  
LIABILITY**  
1135,7490

**PERSONAL  
LEGISLATIVE  
CLAIMS**  
1196

**FEDERAL  
GROUP LIFE  
INSURANCE**

**FEDERAL  
RETIREMENT**

UNIVERSITY OF MINNESOTA ORGANIZATIONAL CHART