

DESCRIPTION OF MAP UNITS

UPPER CRETACEOUS

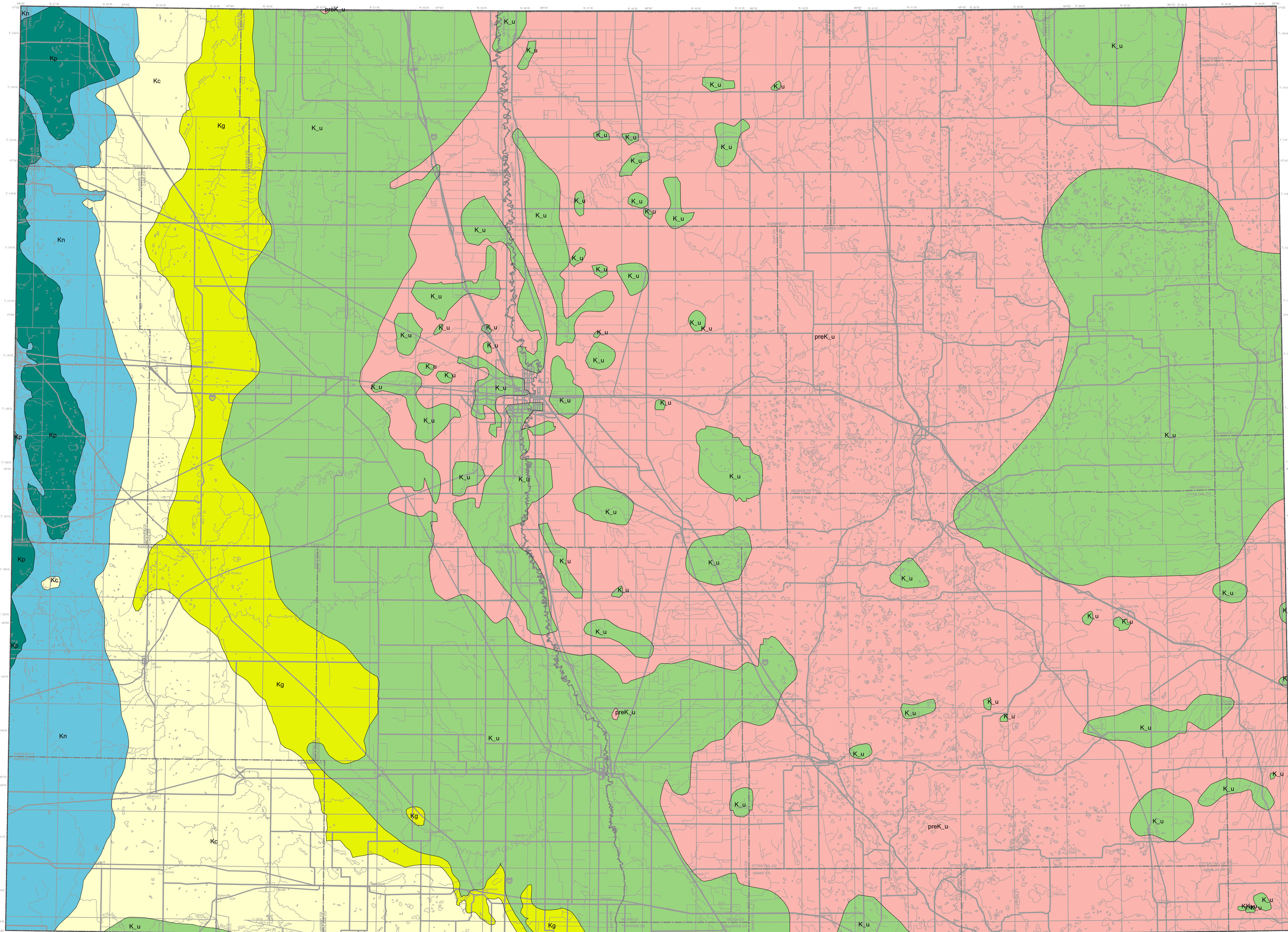
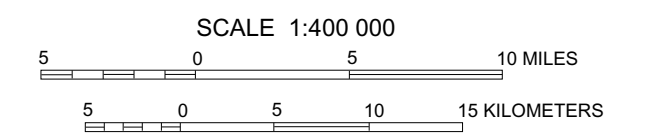
- Kp** **Pierre Formation**--Dark-gray shale; marine offshore sediment; as thick as 120 meters (400 feet).
- Kn** **Niobrara Formation**--Light-brown to dark-gray calcareous shale; marine offshore sediment; as thick as 75 meters (250 feet).
- Kc** **Carlile Formation**--Dark-gray shale; marine offshore sediment; as thick as 120 meters (400 feet).
- Kg** **Greenhorn Formation**--Dark-gray calcareous shale; marine offshore sediment; as thick as 45 meters (150 feet).

CRETACEOUS

- K_u** **Cretaceous, undifferentiated**

PRECRETACEOUS

- preK_u** **Bedrock, preCretaceous, undifferentiated**



Digital base modified from ESRI compiled base information from GDT, U.S. Census Bureau, and the U.S. Geological Survey; digital base annotation by the Minnesota Geological Survey.

Lambert Conformal Conic Projection, 1983 North American Datum
 1st std parallel - 33°, 2nd std parallel - 45°
 Central meridian - 96°, Latitude of project origin - 45°

BEDROCK GEOLOGY OF THE FARGO-MOORHEAD AREA

by

Dale Setterholm and Robert Tipping

2005