



UNIVERSITY OF MINNESOTA

FACTS & FIGURES • DECEMBER 2003

OVERVIEW

The University of Minnesota, with its four campuses, is one of the most comprehensive universities in the United States and ranks among the most prestigious. It is both the state land-grant university, with a strong tradition of education and public service, and a major research institution, with scholars of national and international reputation.

The University serves more than 60,000 students throughout the state and offers degrees in more than 370 fields of study.

The University of Minnesota, Twin Cities (UMTC) is a classic Big Ten campus in the heart of the Minneapolis-St. Paul metropolitan area, just minutes from downtown. The largest of the four campuses, with its state-of-the-art facilities and stately historic buildings, it is set along the banks of the Mississippi River and in the rolling hills of St. Paul. With the most comprehensive academic programs of any institution in Minnesota, as well as the widest range of graduate and professional programs, the University offers unlimited academic and experiential opportunities for students and faculty alike.

The University of Minnesota, Duluth (UMD) consistently ranks among the top regional universities nationwide, attracting students looking for personalized learning on a medium-sized campus.

The University of Minnesota, Morris (UMM) ranks as one of the best public liberal arts colleges in the nation. Combining an honors education with an international perspective, UMM students are prepared for the challenges presented to them after graduation.

The University of Minnesota, Crookston (UMC) is recognized internationally for its academic quality. Its distinctively sharp focus on technology allows students—whatever their major—to develop the skills they need to succeed in the Information Age.

In the Rochester area, the University, through a partnership with the Minnesota State Colleges and Universities, extends upper division undergraduate and postbaccalaureate degree programs to people in southeastern Minnesota.

Statewide Impact—The University also has six agricultural experiment stations, one forestry station, and regional extension service offices that serve all parts of the state. The University’s public service programs (e.g., extension service; clinics in medicine, dentistry, and veterinary medicine; outreach to K-12 education) help more than 1 million people annually.

RANKINGS

The Twin Cities campus is one of only three public campuses that rank among the top 25 public and private research university campuses in the following measures. The other two are Michigan and UC-Berkeley.

Measure	Rank
Total Research	12th
Federal Research	15th
Endowment	24th
Annual Private Giving	15th
National Academy Members	25th
Faculty Awards	17th
Ph.D. Degrees Awarded	5th
Postdoctoral Students	15th

HIGHLIGHTS

Patents—The University has received more than 250 patents in the past five years and is ranked 6th among universities nationally in the number of start-up companies formed as a result of university research.

Degrees Awarded—The University awarded more than 11,500 degrees in 2002–03. Ten percent of all degrees awarded were in engineering, and 41 percent of the degrees awarded on the Twin Cities campus were graduate and first professional degrees (e.g., M.S., Ph.D., M.D., D.D.S.).

New Research Facility—The University created the first facility in the nation for microbial and plant genomics research into disease- and drought-resistant crops, new ways to treat and prevent animal health problems, and new ways to improve the environment.

HIGHLIGHTS (continued)

Minnesota's Only Research University—

Many states have at least two major research universities (Michigan and Michigan State, Iowa and Iowa State). The University is Minnesota's only research university.

Medicine and Agriculture—

The Twin Cities campus is one of a very small number of campuses nationally that have both an academic health center with a major medical school and agricultural programs. The other campuses are Wisconsin, Ohio State, and Florida. These are the nation's largest and most comprehensive campuses.

Improving Lives Throughout the World—

Work done by faculty, staff, and students at the University of Minnesota has improved the lives of people throughout the world. Among numerous accomplishments and contributions are the following:

- release of more than 80 new crop varieties that have greatly increased yields worldwide
- invention of the first heart pacemaker
- invention of the flight recorder (black box) for aircraft and the retractable seat belt for cars
- development of the widely used Minnesota Multiphasic Personality Inventory (MMPI)
- development of hundreds of cold-hardy plant varieties, including fruits, vegetables, flowers, and shrubs
- invention of a drug to treat HIV infections

Leader in Sponsored Research—The University is one of the leading recipients of federal research, training, and public service grants and contracts. The University received more than \$500 million in grant and contract awards from federal and private sources in fiscal year 2003. The University conducts 98 percent of all sponsored, academic research in Minnesota.

ENROLLMENT AND DEGREES

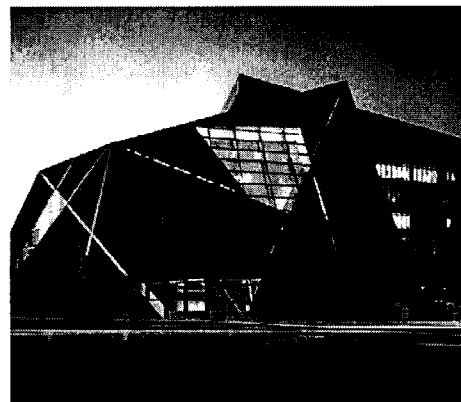
	UMC	UMD	UMM	UMTC	Total
Enrollment Fall 2003					
Undergraduate	1,187	8,662	1,728	28,747	40,324
Graduate	0	586	0	12,796	13,382
Professional	0	165	0	2,758	2,923
Nondegree	1,133	701	133	5,173	7,140
Total	2,320	10,114	1,861	49,474	63,769
Degrees 2002-03					
Undergraduate	201	1,387	325	5,576	7,489
Master's	0	176	0	2,561	2,737
Doctoral	0	0	0	1,282	1,282
Total	201	1,563	325	9,419	11,508

MOST RECENT RETENTION/GRADUATION RATES

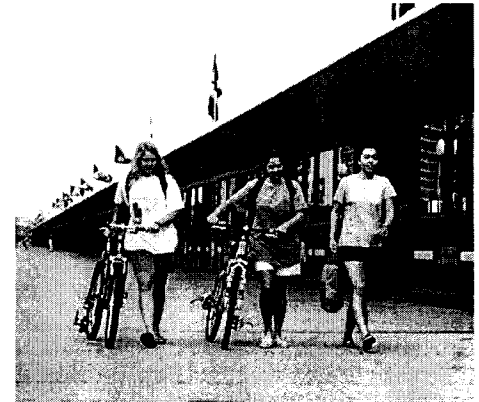
	Class	UMC	UMD	UMM	UMTC
1st year retention	2001	61.6%	78.3%	82.7%	84.6%
2nd year retention	2000	45.3%	68.3%	71.7%	73.9%
4-year graduation rate	1998	26.3%	22.5%	39.5%	28.6%
5-year graduation rate	1997	38.4%	46.6%	55.1%	48.4%
6-year graduation rate	1996	39.1%	51.1%	63.2%	54.1%

MINORITY AND INTERNATIONAL STUDENT ENROLLMENT

Fall 2003	UMC	UMD	UMM	UMTC	TOTAL
African American	34	129	52	1,779	1,994
American Indian	18	115	134	302	569
Asian/Pacific Islander	27	247	57	3,697	4,028
Chicano/Latino	25	96	28	915	1,064
International	36	229	21	3,731	4,017



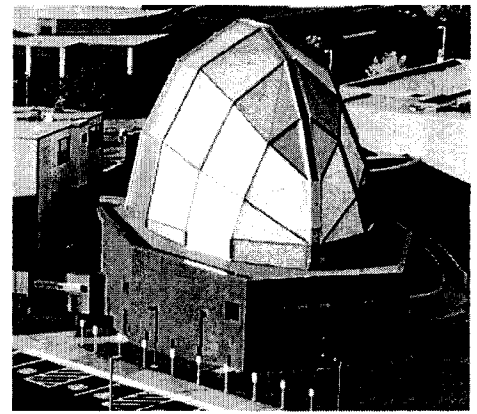
McNamara Alumni Center at UMTC in Minneapolis



UMTC students on the Washington Avenue Bridge

TUITION AND REQUIRED FEES

2003-04		UMC	UMD	UMM	UMTC
Undergraduate	Resident	\$6,780	\$6,968	\$8,096	\$7,116
Undergraduate	Non-res	\$6,780	\$18,073	\$8,096	\$18,746
Graduate	Resident	—	\$8,285	—	\$8,517
Graduate	Non-res	—	\$15,384	—	\$15,616
M.B.A.	Resident	—	—	—	\$19,004
M.B.A.	Non-res	—	—	—	\$26,554
Vet Medicine (DVM)	Resident	—	—	—	\$15,911
Vet Medicine (DVM)	Non-res	—	—	—	\$30,667
Law (JD)	Resident	—	—	—	\$15,385
Law (JD)	Non-res	—	—	—	\$25,351



Weber Music Hall at UMD

BIG 10 COMPARISON—RESIDENT TUITION AND REQUIRED FEES

2003-04	Undergraduate	10-Year Increase	Graduate	10-Year Increase
Penn State	\$9,706	101%	\$10,420	93%
Michigan	\$8,481	66%	\$12,933	62%
Minnesota	\$7,116	108%	\$8,517	114%
Michigan State	\$7,044	58%	\$7,762	53%
IL-Urbana	\$7,010	100%	\$7,756	93%
Ohio State	\$6,651	126%	\$7,278	71%
Indiana	\$6,517	118%	\$5,569	83%
Purdue	\$5,860	117%	\$5,860	117%
Wisconsin	\$5,139	102%	\$7,593	115%
Iowa	\$4,993	112%	\$5,689	106%



Biosystems and Agricultural Engineering building at UMTC in St. Paul

UNIVERSITY EMPLOYEES

Fiscal Year 2003	UMC	UMD	UMM	UMTC	Total
Civil Service/Bargaining Unit	103	704	184	8,578	9,570
Administrative	38	96	38	1,435	1,606
Faculty—Tenure, Tenure Track	44	299	102	2,310	2,755
Faculty—Other	9	134	23	547	714
Professional	60	93	35	2,181	2,369
Total	254	1,326	382	15,051	17,014

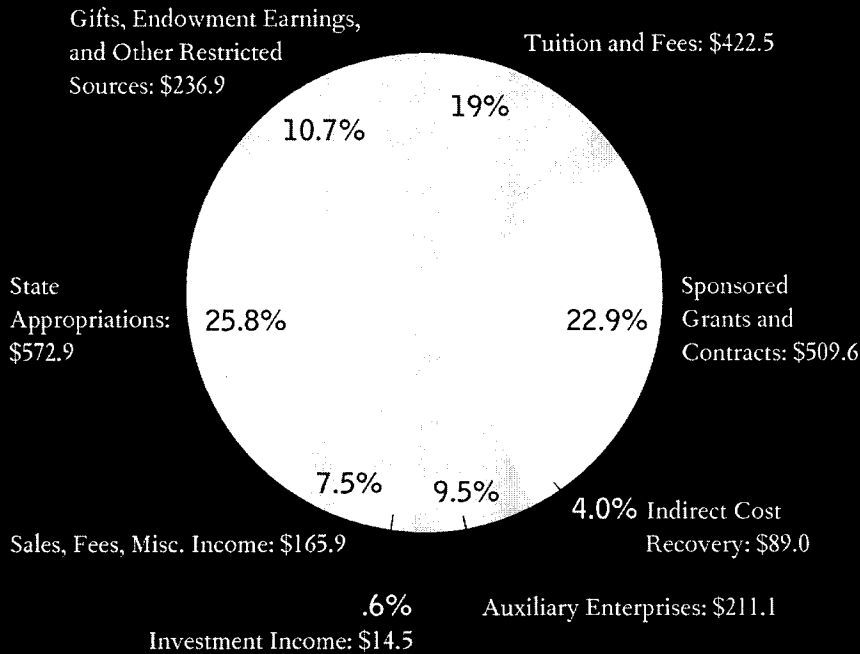
PHYSICAL ASSETS

	UMC	UMD	UMM	UMTC	Other Properties	Total
Surface Acres	1,588	308	1,288	1,154	—	4,338
Number of Buildings	40	74	32	243	401	790
Gross Square Feet	553,000	2,924,000	942,000	21,803,000	1,330,000	27,557,000

This publication can be made available in alternative formats for people with disabilities. Contact University Relations, 612-624-6868. The University of Minnesota is an equal opportunity educator and employer. ⊕ Contains a minimum of 10% pcw. 12/03—5,000

FY 2004 Budgeted Revenues

The University of Minnesota's FY 2004 budgeted revenues total \$2.2 billion.
Categories (in millions):



Student Center at UMM



Researcher and students at UMD

SPONSORED FUNDING

Fiscal Year 2003 Sponsored Awards	\$512,915,373
Fiscal Year 2003 Sponsored Expenditures	\$463,535,391

Expenditure Source

National Institutes of Health	45.0%
National Science Foundation	9.1%
Other Federal Agencies	17.6%
Private Companies/Foundation	20.1%
State/Local Government (e.g., MnDOT)	8.2%

ENDOWMENTS AND GIFT SUPPORT

Campaign Minnesota, the University's seven-year capital campaign, raised \$1.66 billion in cash and pledges. The campaign surpassed its original goal of \$1.3 billion and is the second most successful fund-raising campaign of any public university in the nation.

More than 220,000 individuals, foundations, and other organizations contributed to the campaign, including 85,600 alumni and 11,000 faculty and staff. The campaign total includes cash gifts and future commitments such as bequests. Private support provides about 12 percent of the University's revenues each year.

Scholarship and fellowship funding has tripled as a result of new gifts. Thousands more students are being helped today than before the campaign. The 110 new endowed faculty chairs and professorships created are critical for retaining and recruiting top scholars. There are 372 endowed positions at the University today.



Atrium at UMC



Genomics researchers at UMTC