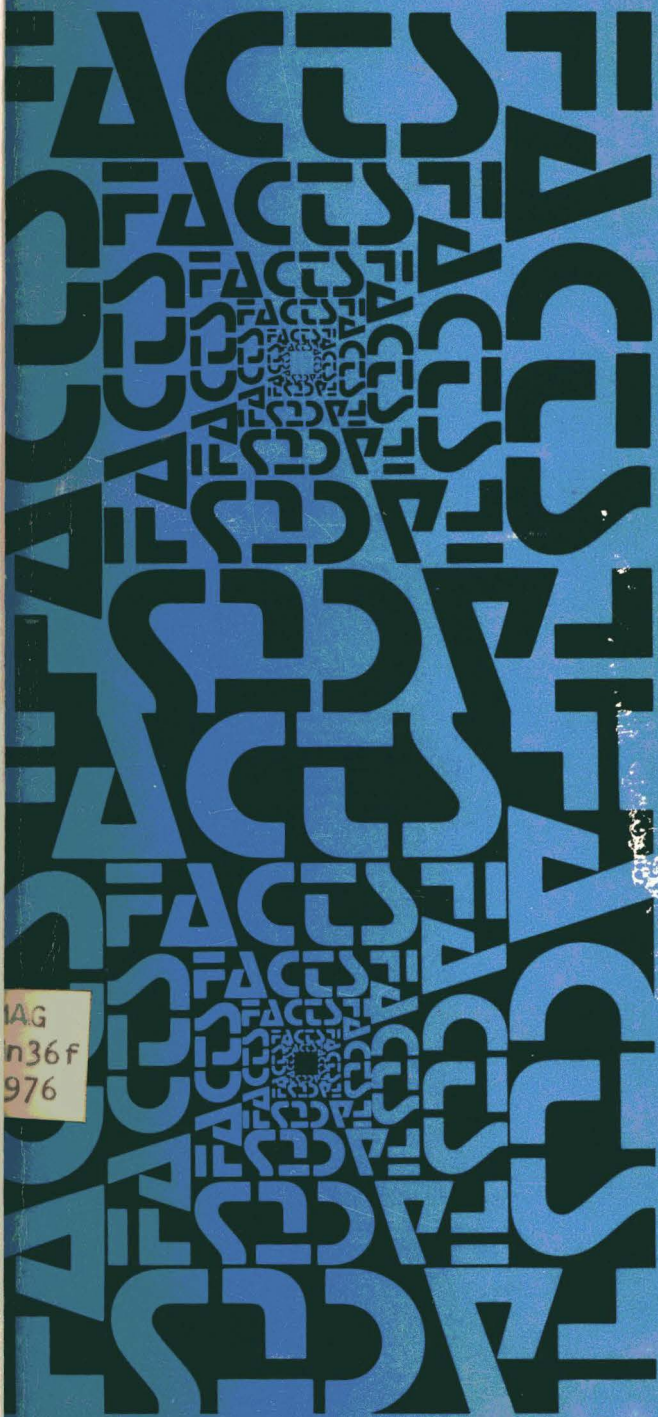


FACTS

1976

UNIVERSITY OF MINNESOTA



UAG
n36f
976

UNIVERSITY OF MINNESOTA

Equal Opportunity

The Board of Regents has committed itself and the University of Minnesota to the policy that there shall be no discrimination in the treatment of persons because of race, creed, color, sex, or national origin. This policy is particularly applicable in the recruitment and hiring of members of the faculty and staff and in promoting the academic pursuits of all students at both undergraduate and graduate levels. Individual faculty members are expected to support the development of affirmative action programs that will provide an ethnic and sex balance in their departments.

MAG
Un36f
1976

University Archives

Univer:
Novem
ment of University Relations, S-68
Morrill Hall, University of Minnesota,
Minneapolis, Minnesota 55455;
Telephone (612) 373-2126.

MAG
 Ur 225
 1976

Addresses and Telephones

University of Minnesota,
 Twin Cities Campus Operator (612) 373-285
 Minneapolis Campus 55455
 St. Paul Campus 55108
 University of Minnesota Hospitals,
 Minneapolis 55455 (612) 373-848
 University of Minnesota,
 Duluth 55812 (218) 726-800
 University of Minnesota,
 Morris 56267 (612) 589-221
 University of Minnesota Technical College,
 Crookston 56716 (218) 281-655
 University of Minnesota Technical College,
 Waseca 56093 (507) 835-100
 Hormel Institute,
 Austin 55912 (507) 433-880
 Mayo Graduate School of Medicine,
 Rochester 55901 (507) 282-250

Branch Stations:

2 Cedar Creek Natural History Area,
 Bethel 55005 (612) 434-510
 Cloquet Forestry Center,
 Cloquet 55720 (218) 879-450
 Horticultural Research Center,
 Excelsior 55331 (612) 474-940
 Horticulture Center,
 Duluth 55804 (218) 525-430
 Lake Itasca Forestry and Biological Station,
 Lake Itasca 56460 (218) 266-360
 North Central Experiment Station,
 Grand Rapids 55744 (218) 326-340
 Northwest Experiment Station,
 Crookston 56716 (218) 281-650
 Rosemount 55068
 Agricultural Experiment Station . . (612) 423-140
 Rosemount Research Center (612) 423-140
 Sand Plain Experimental Field,
 Elk River 55330 (612) 441-140
 Southern Experiment Station,
 Waseca 56093 (507) 835-360
 Southwest Experiment Station,
 Lamberton 56152 (507) 752-740
 West Central Experiment Station,
 Morris 56267 (612) 589-140

TABLE OF CONTENTS

HISTORY, ORGANIZATION, AND GOVERNANCE
 Origins and Development 5
 Board of Regents 6
 Administrative Officers 7
 University Presidents 8
 University Senate 9
 Council of Academic Officers 10
 Consultative Committees 10
 Campus Assemblies 11
 University Organization 12

STUDENTS AND ALUMNI
 Admissions Policy 15
 Enrollment 15
 Tuition Rates 16
 Student Services Fees 17
 Degrees Granted 17
 Athletics 17
 International Students: U.S. and Foreign 20
 Minnesota Alumni Association 20
 Residence Halls 21
 Sororities and Fraternities 22
 Student Associations 23
 Student Unions 24

FACULTY AND STAFF
 Faculty and Staff Totals 27
 Regents' Professors 27

PHYSICAL PLANT AND FINANCES
 Total Building Valuation 31
 University Land 31
 Financial Status 31

GENERAL INFORMATION
 Art Galleries 33
 Concerts and Lectures 34
 Equal Opportunity and Affirmative Action 35
 Extension Services 36
 Freshwater Biological Institute 37
 Honorary Degrees 37
 James Ford Bell Museum of Natural History 38
 Lake Superior Basin Studies Center 38
 Landscape Arboretum 38
 Marshall W. Alworth Planetarium 39

Minnesota Marine Advisory Service	39
News Services	39
Nobel Prize Winners	40
President's Home	40
Publications	40
Radio Stations	42
Speakers Bureaus	44
Television	44
Theatre	45
Tours	46
University Libraries	47
University of Minnesota Foundation	48
University Press	48
University Traditions	49
William R. Bagley Nature Area	50
UNIVERSITY CALENDAR	51

HISTORY, ORGANIZATION, AND GOVERNANCE

Origins and Development

When the University was founded in February 1851, the new territory of Minnesota was populated by an unknown number of American Indian residents and about 7,000 immigrant settlers. Statehood was still seven years away.

The University began as a preparatory school, was beset by financial crises during its early years, and was forced to close during the Civil War. In 1863, in the midst of this difficult time, Minneapolis businessman John Sargent Pillsbury began the long and dedicated service that won him renown as "the Father of the University." As a University Regent and state senator, and later as Governor, he guided the University out of its financial problems.

A major factor in the University's rebirth was the Morrill Act, which was signed into law by President Lincoln in 1862. This "Land-Grant Act," as it was known, gave each state a grant of land within its borders, the income from which was to be used in providing education for its people — especially in the areas of agriculture and the mechanic arts.

In 1867, the preparatory school again opened its doors. Following a major reorganization in 1868, the University finally got under way as an institution of higher education in 1869. The first collegiate class that fall numbered 18 students. The faculty totaled nine.

On December 22, 1869, William Watts Folwell, a scholar who had served as an engineering officer in the Civil War, was inaugurated as the first President of the University. Fittingly, Regent Pillsbury presided at the ceremony. In his inaugural address, President Folwell foresaw the emergence of a "federation of professional schools" with a faculty of teachers and investigators. He called for the development of a University open to all "worthy comers," an institution that would become the "head and crown" of the state's school system.

From its faltering origins, the University has grown mightily to become one of the largest and strongest universities in the land, with an enrollment of some 50,000 full-time students.

Its campus has become statewide with units in many Minnesota communities. Its Twin Cities campus in Minneapolis and St. Paul offers the full range of academic and professional degrees. Academic and preprofessional programs are offered at the University of Minnesota, Duluth, part of the University system since 1947; the University of Minnesota, Morris, opened in 1960; the University of Minnesota Technical College, Crookston, opened in 1966; and the University of Minnesota Technical College, Waseca, established in 1971.

Significant in the University's development is its autonomy in the management of its internal affairs, derived from the state constitution. The University's charter, drawn up and adopted by the Territorial Assembly and approved by an act of Congress, delegated to the Board of Regents the right to govern the University. In the state constitution, all the "rights, immunities, franchises, and endowments" granted by the charter were "perpetuated unto" the University.

In a test lawsuit known as the "Chase case," the Minnesota Supreme Court in 1928 held that the Board of Regents, in the management of the University, is constitutionally independent of all other executive authority.

Board of Regents

The Board of Regents is the governing body of the University. Its chief responsibilities are election of the Chancellor; enactment of rules, regulations, and policies governing the University; control of University expenditures; and approval of all staff changes. (The term President is commonly used instead of Chancellor.)

The 12 Regents are chosen by the state Legislature. Although not required by statute, it is customary to elect one Regent from each of Minnesota's eight Congressional districts and four from the state at large. They serve without pay for six-year terms. Vacancies occurring when the Legislature is not in session are filled by the Governor.

The Chancellor of the University is ex officio President of the Board of Regents. From its membership, the Board elects a chairman and a vice chairman. The Board also elects a secretary and a treasurer who may not be members of the Board of Regents. All officers, with the exception

of the Chancellor, are elected for a two-year period.

The Board meets in regular session the second Friday of each month. The business considered by the Board is first reviewed by one or more of its standing committees. The standing committees are Educational Policy and Long-Range Planning; Faculty and Staff Affairs; Physical Plant and Investments; Student Concerns; and Executive. Dates of Board meetings are announced ahead of time in the Official Daily Bulletin, which is published in the *Minnesota Daily* (the Twin Cities campus student newspaper) when classes are in session, and as a special bulletin during quarter breaks. The dates are also announced at the coordinate campuses in their campus calendars or publications and in *Brief*, the weekly newsletter for faculty and staff on all campuses. Materials for consideration by the Board are usually submitted through the office of the President to the secretary of the Board of Regents.

Members

The Honorable Erwin L. Goldfine, Duluth
The Honorable Lauris Krenik, Madison Lake
The Honorable George Latimer, St. Paul
The Honorable Robert Latz, Golden Valley
The Honorable L.J. Lee, Bagley
The Honorable Lester A. Malkerson, Shakopee
The Honorable Wenda W. (Mrs. Cornell) Moore,
Minneapolis, Vice Chairman
The Honorable Lloyd H. Peterson, Paynesville
The Honorable George W. Rauenhorst, Olivia
The Honorable Neil C. Sherburne, Lakeland
Chairman
The Honorable Loanne R. (Mrs. Ralph) Thrane,
Chanhassen
The Honorable David C. Utz, M.D., Rochester
C. Peter Magrath, President
Duane A. Wilson, Secretary
Clinton T. Johnson, Treasurer

Administrative Officers

The President of the University is responsible to the Board of Regents. He is the chief executive officer of the University and is the representative of the faculties and the University Senate to the Board of Regents.

Six vice presidents, approved by the Board of Regents, divide the responsibilities of admin-

istering the University into six areas: academic affairs; administrative operations; finance; health sciences; institutional planning and relations; and student affairs.

President and Vice Presidents

President of the University	C. Peter Magrath
Vice President for Academic Affairs	Henry Koffler
Deputy Vice President for Agriculture, Forestry, and Home Economics	William F. Hueg, Jr.
Vice President for Administrative Operations	Walter H. Bruning
Vice President for Finance	James F. Brinkerhoff
Vice President for Health Sciences	Lyle A. French
Vice President for Institutional Planning and Relations	Stanley B. Kegler
Vice President for Student Affairs	Frank B. Wilderson

Provosts

University of Minnesota, Duluth	Raymond W. Darland
University of Minnesota, Morris	John Q. Imholte
University of Minnesota Technical College, Crookston	Stanley D. Sahlstrom
University of Minnesota Technical College, Waseca	Edward C. Frederick

University Presidents

William Watts Folwell	1869-1884
Cyrus Northrop	1884-1911
George E. Vincent	1911-1917
Marion L. Burton	1917-1920
Lotus D. Coffman	1920-1938
Guy Stanton Ford	1938-1941
Walter C. Coffey	1941-1945
James Lewis Morrill	1945-1960
O. Meredith Wilson	1960-1967
Malcolm Moos	1967-1974
C. Peter Magrath	1974-

E.W. Ziebarth served as President of the University from June 17 to September 1, 1974.

University Senate

The University Senate is the voice of the state-wide University faculty and students. It has legislative control over educational matters concerning the University as a whole but not over the internal affairs of any individual college, institute, or school, except where these overlap or materially affect the interests of other colleges or the University as a whole.

The University Senate delegates authority and responsibility to campus assemblies in educational matters concerning but one campus of the University. Each campus determines its own assembly and adopts its own constitution and by-laws, which are consistent with the constitution and bylaws of the Senate.

The Senate meets at least once in each quarter of the academic year, at a time and place determined by the President. Special meetings may be called by the President, at the request of the Consultative Committee, or at the written request of ten members of the Senate.

The Senate is composed of elected representatives of the various schools, colleges, and campuses, as well as the President. The elected members are chosen by secret ballot by faculty members with the rank of instructor and above in the several schools and colleges. Each college has at least one senator; one additional Senate member is chosen for each 20 faculty members or major fraction thereof. Each Senate member also serves on the assembly for his campus. Office is held for three years.

Student representation on the Senate began in 1969. They are represented on all committees except the Faculty Consultative Committee and the Senate Judicial Committee.

In advance of each Senate meeting, the docket is published in the *Minnesota Daily*. Minutes are sent to all faculty members eligible to vote for senators. Faculty members who are not senators may attend Senate meetings and participate, at the discretion of the Senate, except for voting.

The President of the University is chairman of the Senate. He may suspend action taken by the Senate or any college faculty and ask for reconsideration of such action. If the President and the Senate or college faculty do not reach agreement, the question may be appealed to the Regents by the President, the Senate, or the college faculty.

The vice chairman is elected by the Senate from its membership at the first meeting of the spring quarter of each academic year. The clerk of the Senate and the parliamentarian, who need not be members, are appointed by the President with the consent of the Senate.

The Senate includes ten standing committees: the All-University Administrative Committee, the Committee on Academic Standing and Relations, the Consultative Committee, the Committee on Committees, the Committee on Educational Policy, the Committee on Faculty Affairs, the Judicial Committee, the Library Committee, the Committee on Research, and the Committee on Resources and Planning.

Council of Academic Officers

10 The Council of Academic Officers was established in March of 1973 and consists of key academic and administrative officers whose function is to serve as an advisory body to the President and vice president for academic affairs, who co-chair this group. This council serves as a forum for the exchange of ideas regarding a wide variety of academic and University matters. While it has no legislative function in the sense that the University Senate has, in its advisory capacity it is instrumental in providing input and constant review that result in the eventual modification and improvement of academic policies and procedures.

Consultative Committees

The **Senate Consultative Committee** is composed of nine elected members of the faculty, seven elected members of the student body, and the vice chairman of the University Senate (George Shapiro), who serves ex officio. The elected faculty representatives comprise the Faculty Consultative Committee, and the elected student representatives make up the Student Consultative Committee. The Senate Consultative Committee meets with the President at least quarterly to discuss matters of policy relating to educational interests or policies of the University, personnel, service functions, and the budget.

The **Faculty Consultative Committee** consists of seven faculty members elected by and from the

Twin Cities campus faculties and one faculty member each elected by and from the Duluth and Morris campus faculties. Terms of office are for three years, and no member is eligible to serve more than two consecutive terms. The terms of approximately one third of the members expire each year. The chairman of the committee is elected by his fellow members for a term of one year and is eligible for reelection. Members of the Faculty Consultative Committee are Paul Murphy, chairman; Rutherford Aris; Laird Barber (Morris); Wendell Glick (Duluth); Kenneth Keller; Donald Rasmussen; Leon Reisman; George Shapiro (ex officio); Barbara Stuhler; and Dennis Watson.

Of the seven voting members of the **Student Consultative Committee**, five are elected from the Twin Cities campus, one from the Duluth campus, and one from the Morris campus. Each member, who must be a member of the Student Senate at the time of his election, serves a one-year term and is eligible for reelection. Members of the Student Consultative Committee for 1975-76 are John Ciabattari, Mark English, Gerald Gettel (Morris), Roxann Goertz, John Hastings (Duluth), Barbara-Ann March, and Rick Marsden.

In addition to the quarterly meetings of the Senate Consultative Committee with the President, separate meetings of the Faculty Consultative Committee are held to discuss with the President, or others, matters of primary concern to the faculty. The Student Consultative Committee may meet separately to discuss with the President, or others, matters of primary concern to the student body. Each consultative committee serves as the executive committee of its Senate, and the Senate Consultative Committee serves as a coordinating committee between administrative offices and the University Senate.

Campus Assemblies

11 Each campus of the University has a campus assembly with functions similar to those of the University Senate. Faculty and student representatives serve on the assemblies, which are elected governing bodies for the campuses. Civil service staff members also serve at Morris and Crookston. The Twin Cities Assembly meets once each quarter. The Duluth Campus Assembly meets a minimum of twice per quarter, the Morris Campus Assembly meets at least once each

quarter, and the Crookston Campus Assembly meets monthly. The Waseca Campus Assembly was formed during fall quarter, 1975.

University Organization

President

Executive Director, University of Minnesota Foundation, and Director, Development Office of Equal Opportunity and Affirmative Action

Coordinate Campuses
Department of Alumni Relations

Vice President for Academic Affairs

Academic Divisions:

Institute of Agriculture, Forestry, and Home Economics

College of Biological Sciences
College of Business Administration
Continuing Education and Extension
College of Education

General College

Graduate School

Law School

College of Liberal Arts

Summer Session

12 Institute of Technology

University College

College of Veterinary Medicine

Departments of Aerospace Studies, Military Science, and Naval Science (Air Force, Army, and Naval ROTC)

Department of Concerts and Lectures

Center for Educational Development

Office of International Programs

Measurement Services Center

University Computer Services

University Gallery

University Libraries

University Press

Center for Urban and Regional Affairs

Vice President for Administrative Operations

Administrative Data Processing Center

Personnel

Department of Police

Department of University Relations

Office of Emergency Preparedness

Vice President for Finance

Budget Office

Business Administration

Finance and Administration
Physical Planning
Support Services and Operations
University Attorney

Vice President for Health Sciences

School of Dentistry

Medical School

Mortuary Science

School of Nursing

College of Pharmacy

School of Public Health

University of Minnesota Hospitals

Vice President for Institutional Planning and Relations

Governmental Relations (State)

Institutional Relations (Other Educational Systems)

Departments of Intercollegiate Athletics

Management Planning Office (Budget and Legislative Planning)

Vice President for Student Affairs

Office of Admissions and Records

Campus Assistance Center

Housing Office

International Student Adviser

Martin Luther King Program

Department of the Minnesota Union

Minnesota Women's Center

Orientation Offices

Parents' Association

Department of Recreational Sports

Special Counseling Office

Student Activities Centers

Student Affairs Office (St. Paul)

Student Counseling Bureau

Office of Student Financial Aid

Student Life Studies

University Health Service

Provost, University of Minnesota, Duluth

Provost, University of Minnesota, Morris

Provost, University of Minnesota Technical College, Crookston

Provost, University of Minnesota Technical College, Waseca

ADMISSIONS & RECORD INFORMATION

STUDENTS AND ALUMNI

Admissions Policy

Admission to the University is open to all qualified persons, and is based primarily on previous achievement and ability. Race, religion, color, or national origin are not part of the criteria for admission or employment.

Enrollment (Fall quarter, 1975)

	Men	Women	Total
Agriculture	1,239	541	1,780
Biological Sciences	400	165	565
Business Administration	1,329	313	1,642
Dental Hygiene	4	276	280
Dentistry	521	48	569
Education	899	1,585	2,484
Forestry	488	92	580
General College	1,718	1,330	3,048
Graduate School			
Minneapolis, St. Paul	4,773	2,677	7,450
Duluth	129	83	212
Mayo, Rochester	387	24	411
Home Economics	59	1,229	1,288
Law	510	201	711
Liberal Arts	8,950	8,282	17,232
Medical School	1,294	217	1,511
Medical Technology	22	109	131
Mortuary Science	84	5	89
Nursing	34	397	431
Occupational Therapy	2	71	73
Pharmacy	265	144	409
Physical Therapy	16	47	63
Public Health	171	188	359
Technology	3,644	391	4,035
University College	118	123	241
Veterinary Medicine	224	70	294
Total Twin Cities	<u>26,764</u>	<u>18,501</u>	<u>45,265</u>
Crookston	571	359	930
Duluth	3,349	2,649	5,998
Morris	926	667	1,593
Waseca	369	336	705
Total Collegiate	<u>32,495</u>	<u>22,619</u>	<u>55,114</u>

Other than regular
collegiate enrollment,
including Independent
Study, Evening Extension,
etc.

Grand Total

24,584
79,698



Tuition Rates (Per quarter, 1975-76)

	Resident	Nonresident
Liberal Arts, University College, Dental Hygiene, General College, co- ordinate campuses of Duluth and Morris	\$210	\$625
Technical Colleges at Crookston and Waseca	190	545
Business Administra- tion, Agriculture, Forestry, Home Economics, Education	228	690
Biological Sciences, Nursing, Technology	244	740
Law, Pharmacy, Mortuary Science, graduate work in law	316	905
Veterinary Medicine, Medicine (Duluth) Dentistry, graduate work in veterinary medicine and in dentistry	530	1,355
16 Medical School and graduate work in medicine		
1-9 credits	265	678
10 credits	530	1,355
Post-M.D. Medical Fellow Specialist	125	125
Social Work (Duluth)	275	385
Public Health, Medical Technology, Physical and Occupational Therapy	275	770
*Graduate School		
Education (Duluth) more than 6 credits 6 credits or less, or thesis only, or doctoral candidates in final quarter	228 275 138	690 770 385

*Several other options are available for graduate students, depending on their stages of degree progress. Questions about these options should be addressed to the Graduate School Registration Office, 316 Johnston Hall, University of Minnesota, Minneapolis, Minn. 55455.

Ph.D. candidates with 6 credits or less, or continuous registration	50	50
teaching assistants and associates more than 6 credits	200	200
6 credits or less, or thesis only	100	100
examination only	30	30

Student Services Fees (Per quarter, 1975-76)

Technology	\$48.25
All other colleges, Twin Cities campus	47.25
Duluth campus	39.25
Morris campus	31.00
Crookston campus	32.00
Waseca campus	30.00

Degrees Granted

Since June 1873, when the first two degrees were awarded, the University has granted a total of 278,671 degrees (through June 1975). During the school year 1974-75, 10,466 students received their diplomas.

Included in the total number of degrees granted through June 1975 are 11,183 Doctor of Philosophy degrees, the first of which was awarded in 1888. In 1974-75, the University presented degrees to 516 Ph.D. candidates.

Athletics

Intercollegiate athletic programs are available for men and women on the Twin Cities campus. Men's teams are fielded in 11 sports — baseball, basketball, cross country, football, golf, gymnastics, hockey, tennis, track, swimming, and wrestling. The women's teams compete in basketball, cross country, field hockey, golf, gymnastics, softball, swimming, tennis, track, and volleyball.

Gopher football teams have won six national championships, the last one in 1960. The baseball team has captured ten Big Ten titles since 1956, and three NCAA Championships (1956, 1960, and 1964). The Minnesota men's basketball team won the Big Ten conference championship in 1972 and finished as runner-up in 1973, and the hockey team captured the NCAA Championship in 1974.

The ten-sport women's program is relatively new, but is developing rapidly and has already achieved notable success. The swimming/diving and volleyball teams won state championships in 1972. During the 1974 season the track, cross country, volleyball, and swimming teams captured state titles. In regional competition, the volleyball team took second place and qualified for the second consecutive year. The gymnastics team placed second in state competition and fifth in the regional tournament. Individuals from six of the ten teams participated in national competition last season, and the calibre of competition is expected to increase substantially this season. This fall the Big Ten Volleyball Tournament was held at the University for the first time, in the Bierman Field Athletic Building.

All undergraduate women may participate in the women's intercollegiate program. Dates and times for tryouts are posted regularly in the *Minnesota Daily*.

Twin Cities campus athletic facilities include Memorial Stadium, which seats 56,725 for football, and Williams Arena, which has the largest seating capacity for basketball (17,867) and hockey (7,654) of any collegiate facility in the world. A new 2,200-seat capacity baseball stadium and a nine-lane, artificial surface running track opened for competition in the spring of 1971. In 1970 an artificial playing field was installed in the football stadium, which also houses facilities for golf, handball, karate, paddleball, squash, weightlifting, wrestling, and other activities.

Still other facilities include an 18-hole championship golf course, a nine-hole short course, 30 outdoor tennis courts, a field house for indoor baseball, basketball, football, and track, and swimming pools, gymnasiums, and locker rooms on both the Minneapolis and St. Paul portions of the campus. The athletic ticket office and the administrative offices of men's and women's athletics are located in the Bierman Field Athletic Building.

Varsity and intramural athletic programs are also offered at each of the coordinate campuses. At Duluth, the UMD Bulldogs compete in 11 men's varsity sports and five women's varsity sports as members of the Minnesota Intercollegiate Athletic Conference (MIAC), the Western Collegiate Hockey Association (WCHA), and the Minnesota Association of Intercollegiate

Athletics for Women. After the 1975-76 academic year, UMD will leave the MIAC and enter the Northern Intercollegiate Conference. Men's competition includes baseball, basketball, cross country, football, golf, hockey, skiing, swimming, tennis, track, and wrestling. Women compete in volleyball, basketball, swimming, track, and tennis. Skiing and cross country are planned additions to the 1975-76 women's agenda. Football and track meets are held at the 4,000-seat capacity Griggs Field, located on campus. WCHA hockey games are played in the 5,400-seat Duluth Arena. Students may use the facilities of Rock Hill (UMD's on-campus ski slope), several spacious playing fields, outdoor tennis courts, and two municipal golf courses. New to the campus is a \$1.7 million fieldhouse where track, tennis, wrestling, and intramural basketball events are held.

The Athletics Office at Morris fields varsity teams in eight sports as well as three women's varsity teams. Men's varsity athletics include basketball, football, golf, tennis, track, and wrestling. Women's varsity athletics include basketball, track, and volleyball. The UMM Cougars are members of the Northern Intercollegiate Conference in men's athletics and of the Minn-Kota Conference in women's athletics. Athletic facilities include a new football field with seating for 2,500; the only "all-weather" perma-track in western Minnesota; a new baseball diamond; and a physical education complex with seating for 4,000, housing three basketball courts, an all-purpose gymnasium, and handball courts. The new \$1.5 million pool complex was dedicated in May 1973 to add to University facilities.

At Crookston, the UMC Trojans compete in the Northern Division of the Minnesota Junior College Conference. UMC is the only two-year institution to offer all major athletics in its program — baseball, basketball, football, golf, hockey, tennis, track, and wrestling. At Waseca, the Technical College is a member of the Minnesota Junior College Conference. The Rams men's team competes in football, cross country, basketball, wrestling, and track in the Southern Division of that conference. Women compete in volleyball, basketball, track, and softball.

International Students: U.S. and Foreign

About 2,000 foreign students and faculty members are at the University. They come from more than 100 different countries in all parts of the world.

Countries with the largest representation are Hong Kong, the Republic of China, India, Nigeria, Korea, Canada, and Japan. Approximately 800 University of Minnesota students studied abroad in 1974-75.

The International Student Adviser's Office, located at 717 E. River Rd., Mpls., Minn. 55455, works with foreign nationals in the areas of educational and personal problems, counseling, financial aid, and U.S. and foreign government regulations.

The Minnesota International Student Association in 229 Coffman Union, and the Minnesota International Center at 711 E. River Rd., also offer assistance to foreign nationals. The International Study and Travel Center in 40 Coffman Union offers assistance to U.S. students planning to study abroad.

Minnesota Alumni Association

20

The Minnesota Alumni Association is a voluntary organization of 24,000 alumni of the University. Membership is open to graduates or former students who have completed 15 credits in daytime or evening classes. The organization is governed by a board of 55 directors, 17 of whom are presidents or representatives of constituent alumni groups; 16 regional directors; and the presidents of two affiliated groups, the Law Alumni Association and the "M" Club.

The Association has 65 chapters in the United States and overseas. Its members serve on a variety of University committees. It acts as secretariat for its 17 constituent groups, maintains records of University alumni, and recommends distinguished alumni for University honors. It serves its membership through its publication (the *Alumni News*), the Alumni Club, its travel tours, and comprehensive insurance program. Its central purpose is to support the University and serve its alumni in every possible way.

The Alumni Office is in the Administrative Services Building, 2610 University Ave., St. Paul, Minn. 55114. Executive director of the Associa-

tion is Edwin L. Haislet, director of Alumni Relations for the University.

The University of Minnesota, Duluth, Alumni Association has 1,500 members. Graduates receive one year's free membership; renewal is \$5. Association activities include student recruitment, fund-raising for scholarships, representation on campus committees, and social events. Members are informed on UMD's development through the quarterly *Alumnotes*. Association offices are in 320 Administration Building. Executive director is Nancy Joseph.

At Morris, alumni activities are coordinated by the Office of University Relations.

Alumni services at the University's Crookston campus have been the responsibility of the director of Alumni Relations since 1973. This office maintains communications with UMC alumni, conducts follow-up studies and other alumni surveys, and coordinates efforts to consolidate alumni from the college and the Northwest School of Agriculture, a secondary school that was superseded by UMC in 1966. Assistance is provided in several Alumni Relations projects by the University Relations Department.

The Waseca Alumni Association was organized in the fall of 1974.

21

Residence Halls

University residence halls provide housing for 4,214 students on the Twin Cities campus, 1,588 at Duluth, 1,025 at Morris, 408 at Crookston, and 320 at Waseca for a total of 7,555.

Room and board rates in the residence halls vary among units and from campus to campus. Twin Cities campus rates range from \$455 to \$604 per quarter. The range of quarterly rates at Duluth is from \$445 to \$560; at Morris, from \$366 to \$411; at Crookston, from \$345 to \$458; and at Waseca, from \$340 to \$430. Rooms with limited meal plans are available on all campuses. Meals are not included with apartment housing at Duluth and Morris.

Residence halls on the Twin Cities campus accommodate 2,484 men and 1,730 women. Comstock is for women only while both Territorial and Frontier are for men. The other five halls are for men and women. Housing for married students on the Twin Cities campus is provided in Commonwealth Terrace, Thatcher Hall, and Como Student

Community in the St. Paul area of the campus; facilities are managed by a student-run cooperative.

Griggs and Vermilion Halls on the Duluth campus house men students while Burntside and Lake Superior Halls accommodate women. Village Apartments and Stadium Apartments are for both men and women.

On the Morris campus, Gay, Independence, Spooner, Biakely, and Pine Halls provide coeducational housing. Residence Hall IV is an apartment complex for men and women.

Robertson Hall, on the Crookston campus, accommodates men; McCall Hall and Skyberg Hall accommodate men and women.

Housing is provided for men and women, in separate wings, on the Waseca campus.

Sororities and Fraternities

There are 14 academic sororities on the Minneapolis campus and three in St. Paul, all of which maintain residence houses. Any eligible woman student regularly enrolled in the University may be invited to join a sorority. Panhellenic Council, the governing body of the Minneapolis sororities, and Intersorority Council, the governing group of the St. Paul sororities, establish and regulate a rushing calendar, but students may join any time during the year.

More than 23 academic and five undergraduate professional fraternities also serve students on the Twin Cities campus; most chapters offer facilities for housing and eating. Membership is by mutual choice and all students in good standing are eligible to belong. The Interfraternity Council (IFC) is the coordinating body for the fraternities. IFC plans a summer rush and open houses at the beginning of the school year, but students may join any time during the year.

University sororities and fraternities provide small group-living accommodations and a wide variety of activities for more than 1,000 residents on the Twin Cities campus. Houses offer many different options from room only (\$195 per quarter) to room and board with cleaning help (\$475). Average commuter costs per quarter are \$90 for fraternities, \$150 for sororities.

The Duluth campus has one service and four academic sororities and one service and five aca-

demically fraternities. There are two sororities and two fraternities at Morris.

Student Associations

The Twin Cities Student Assembly (TCSA) is the Twin Cities student government (the result of a 1974 reorganization of student government and the accompanying abolishment of the Minnesota Student Association). The Assembly coordinates a variety of activities concerned with both academic and political issues, including approval of student service fees, election of representatives to Regents' committees, and legislative lobbying.

All fee-paying students on the Twin Cities campus are eligible to vote in spring elections for student senators representing each college. In addition to the senators, the five Twin Cities student members of the Senate Consultative Committee also serve on the Assembly, which is chaired by a speaker elected from the Assembly. Committees include Rules, Student Concerns, Academic, Staffing, Budget, and Long-Range Policy Planning.

In addition to the student government, a student body president is elected and charged with the task of presenting ideas, plans, and projects for possible action by the Assembly.

The Duluth Student Association (SA) provides an arena where existing policies may be discussed and new policies recommended. It includes an executive staff and the Student Congress. The executive branch is comprised of the president, executive assistant, a public relations commissioner, a travel director, and vice presidents for academic affairs, business affairs, and student affairs. The president is elected in the spring to serve during the following academic year; the other executives are presidential appointees subject to approval by the Student Congress. The Student Congress is an all-student caucus consisting of 30 elected representatives. Representatives include the seven all-University senators, the freshman president, freshman vice president, freshman secretary, and 20 representatives from UMD colleges and schools. The Congress acts as the official liaison body of the students. It debates student issues, formulates student positions on issues, and represents student concerns to various campus legislative

bodies. SA funds (which amount to 90 cents per quarter per student) come from the student service fee.

The Morris Campus Student Association (MCSA) is the campus organization representing students in University governance. The Executive Council, in conjunction with the Student Forum, appoints students to campus committees, sets up commissions dealing with student concerns, and in general attempts to be a student service organization as well as a governing body.

The Crookston Campus Student Senate and the Waseca Student Association are the student governing bodies on their respective campuses.

University Unions/Centers

Facilities of the Department of the Minnesota Union on the Twin Cities campus include Coffman Union, the St. Paul Student Center, and the West Bank Union. A student-faculty-staff board directs each facility and its programs. Students are encouraged to serve on planning committees and to provide leadership for events.

The Kirby Student Center on the Duluth campus offers a wide range of programs to suit many interests. Program planning is done by the Kirby Student Center Program Board, which is made up of students with faculty-staff advisement. Headquarters for student activities on the Morris campus is Edson Hall. The Trojan Inn, a cafeteria-style commuter lunchroom, located in Bede Hall, serves as the Crookston campus student center. The Ram Shack and the Student Activity Link are centers of student activities at Waseca.





FACULTY AND STAFF

Faculty and Staff Totals (1975-76)

The University employs 4,226 full-time and 1,481 part-time persons for its academic staff. The civil service is composed of 8,220 full-time and 5,676 part-time staff members.

Regents' Professors

Established by the Board of Regents in 1965, the Regents' Professorship was first bestowed in June 1966 upon five professors. The Regents' Professorship is considered the highest honor the University can give members of its faculty. Each Regents' Professor receives an annual stipend of \$5,000 from the University of Minnesota Foundation as long as he remains on the active faculty of the University. To date, the following faculty members have been designated Regents' Professors:

Regents' Professor of Chemical Engineering
Neal R. Amundson (1967)

Regents' Professor of Biochemistry Wallace
D. Armstrong (1974, retired)

Regents' Professor of Neurology A.B. Baker
(1973)

Regents' Professor of Humanities John
Berryman (1969-72, deceased)

Regents' Professor of Plant Pathology Clyde
M. Christensen (1973-74, retired)

Regents' Professor of Genetics Ralph E.
Comstock (1968)

Regents' Professor of Mechanical Engineer-
ing Ernst R.G. Eckert (1966-73, retired)

Regents' Professor of Higher Education Ruth
E. Eckert (1972-73, retired)

Regents' Professor of Philosophy Herbert
Feigl (1967-71, retired)

Regents' Professor of Pediatrics and Micro-
biology Robert A. Good (1969-72)

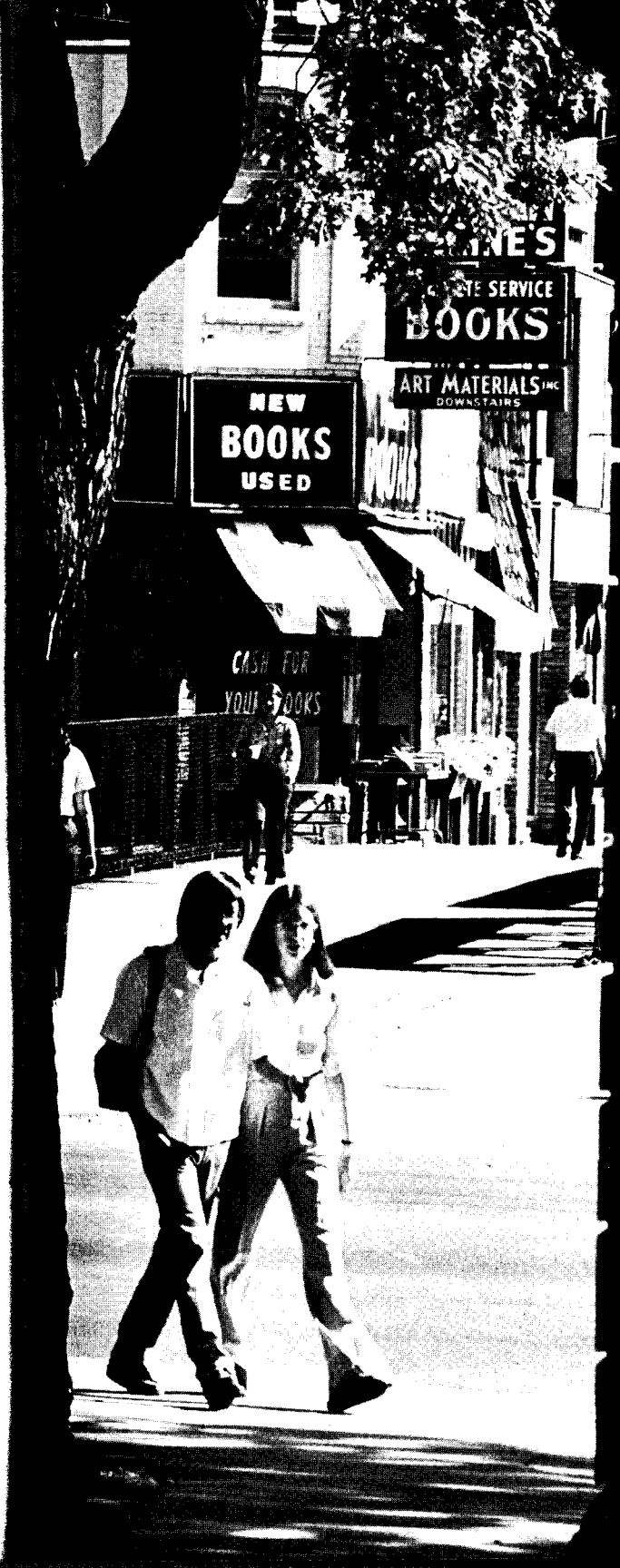
Regents' Professor of Economics Walter W.
Heller (1967)

Regents' Professor of Family Sociology
Reuben L. Hill (1973)

Regents' Professor of Anthropology E.
Adamson Hoebel (1966-72, retired)

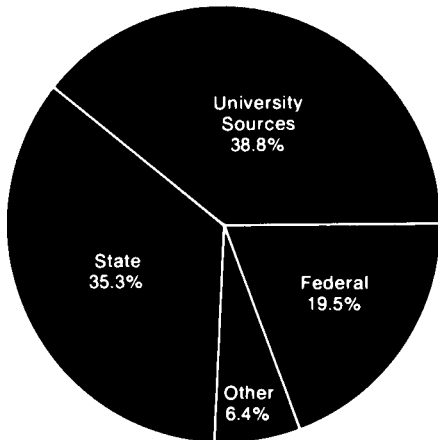
Regents' Professor of Economics Leonid
Hurwicz (1969)

Regents' Professor of History Tom B. Jones
(1970)
Regents' Professor of Classical Studies
William A. McDonald (1973)
Regents' Professor of Psychology Paul E.
Meehl (1968)
Regents' Professor of Physics and Astronomy
Edward P. Ney (1974)
Regents' Professor of Physics Alfred O.C.
Nier (1966)
Regents' Professor of Mathematics James B.
Serrin, Jr. (1968)
Regents' Professor of Medicine and Com-
parative Medicine Wesley W. Spink
(1967-73, retired)
Regents' Professor of English Allen Tate
(1966-68, retired)
Regents' Professor of Political Science John
E. Turner (1974)
Regents' Professor of Surgery Richard L.
Varco (1974)
Regents' Professor of Physiology Maurice B.
Visscher (1967-70, retired)
Regents' Professor of Geology, Ecology, and
Botany Herbert E. Wright (1974)
Regents' Professor of Surgery Owen H. Wan-
gensteen (1966-67, retired)
Regents' Professor of Medicine Cecil J.
Watson (1968-69, retired)

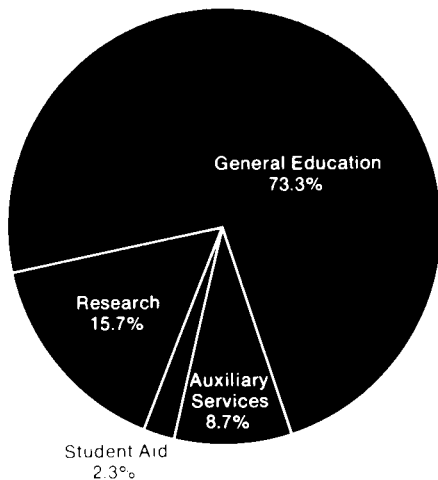


PHYSICAL PLANT AND FINANCES

1974-75
Income by Source



1974-75
Expenditures by Function



Total Building Valuation (By campus)

	Book Value
Minneapolis	\$246,909,802
St. Paul	72,408,260
Duluth	39,046,290
Morris	18,586,668
Crookston	4,939,011
Waseca	4,198,047
Rosemount Research Center	786,346
Off-Campus Buildings	5,138,376
Branch Stations	9,047,896
Total	\$401,060,696

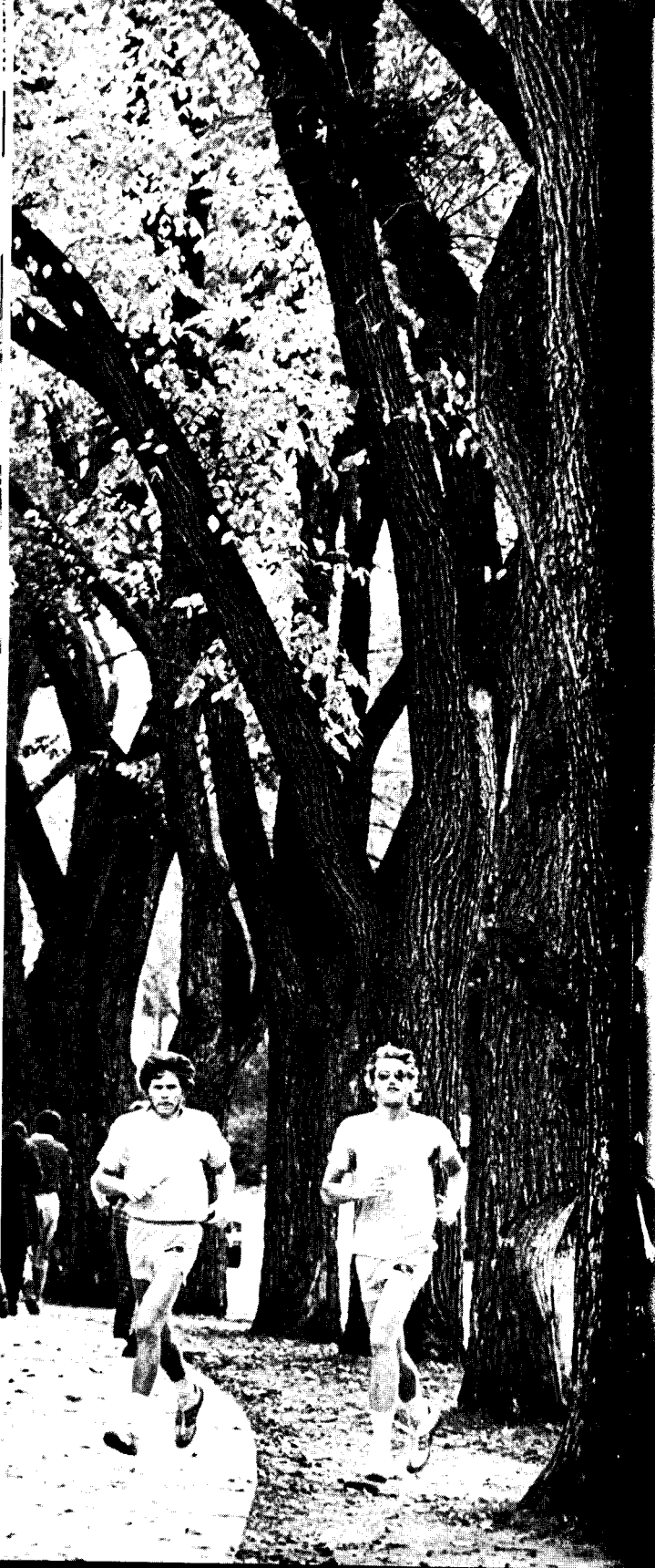
University Land (As of June 30, 1975)

Campuses	Acres
Minneapolis	233
St. Paul	751
Duluth	247
Morris (includes Station)	1,203
Crookston (includes Station)	1,495
Waseca (includes Station)	848
Branch Stations	18,912
Total	23,689

Financial Status

Operating budget for 1975-76	\$420,680,001
Sources of revenue for 1975-76 (estimates):	
State appropriations	\$146,864,037
Student fees	35,803,003
Federal funds	81,961,640
Private gifts, grants, contracts	16,000,000
Earnings	132,051,321
Gifts and endowment income for student aid	8,000,000
Total	\$420,680,001

Additional financial information is available on request. A printed Brief Summary of the Financial Report or a complete Financial Report may be obtained by writing to the Vice President for Finance, 301 Morrill Hall.



GENERAL INFORMATION

Art Galleries

The University Gallery pursues an expanding program of presenting art exhibitions, developing a permanent collection, and providing rental service of original works of art for University students, staff, and faculty members. The Gallery's exhibition spaces are located on the third and fourth floors of Northrop Auditorium, Twin Cities campus, and admission is free at all times.

The University Gallery has a permanent collection of outstanding works of art in all media, ranging in period from antiquity to the present. Additions to the collection are made by gift and by purchase when funds are available.

Throughout the year, including both summer sessions, the Gallery organizes and presents temporary exhibitions, drawing from both its own collections and outside sources. After a month-long exhibition in the Twin Cities, *A Bicentennial Exhibition of Minnesota Art and Architecture*, an ambitious survey of our state's visual arts, organized by the Gallery, will travel to communities around the state throughout the bicentennial year. Two books have been written to accompany this exhibit: *A Guide to the Architecture of Minnesota* and *Painting and Sculpture in Minnesota: 1820-1914*.

Thesis exhibitions of many master of fine arts candidates in the Studio Arts Department are also held in the Gallery each year, and the Gallery's museology interns (graduate students from the Art History Department) plan, organize, and install their own exhibition during their year's internship.

Other galleries are located in Coffman Memorial Union, the St. Paul Student Center, the Auditorium Classroom Building, and Wilson Library.

Since the Tweed Museum of Art was opened on the Duluth campus in 1958, nearly one million persons have viewed as many as 20 separate exhibitions each year, plus faculty and student shows, and a continuing display of art from the George P. Tweed Memorial Art Collection and the museum's permanent collection.

The collection and major funding for the museum were donated by the late Mrs. Alice

Tweed Tuohy. Also donating funds for the museum was her daughter, Mrs. John Brickson, Duluth. Tweed Museum now has more than 600 works of art in its permanent collection.

The gallery in the Humanities Fine Arts Center, Morris campus, is notable for its size and outstanding lighting, which permit displays of large wall hangings and floor pieces. Two shows can be presented simultaneously when the loft area is used. Dividers are used to break up the large main floor for various purposes.

Concerts and Lectures

The University Artists Course, a division of the Department of Concerts and Lectures, presents two series of programs during the year — the Masterpiece Series of internationally recognized musical artists and the World Dance Series of ballet, modern dance, folk, and mime companies. Tickets for all Artists Course events may be purchased in 105 Northrop Auditorium or at any Dayton's store.

Each spring the Department of Concerts and Lectures on the Twin Cities campus joins the Minnesota Orchestral Association and a regional committee of sponsors and guarantors in presenting a series of performances by the Metropolitan Opera Company of New York. Mail orders for tickets are accepted at the ticket office six weeks before the opera performances.

During the academic year, convocations are presented free to the public, sponsored by the Campus Committee on Convocations and the Arts. These events, held at various campus locations, include lectures, musical programs, theatrical productions, and films. Concerts and Lectures also sponsors special lectures and scientific conferences for smaller and selected audiences.

During the summer, Summer Session and the Department of Concerts and Lectures cooperate in sponsoring free films and music and dance programs including contemporary dance, ballet, orchestral music, jazz, and blues.

At the Duluth campus, convocations and lectures are sponsored by the Convocations and Lectures Committee of the Kirby Student Center Program Board. The programs cover a broad range of topics and are open to the public at no charge. During the year, the committee also sponsors

several concerts featuring popular musicians and entertainers. The University Artists Series sponsors four concerts yearly at the Marshall Performing Arts Center. The concerts feature artists of national and international fame. Orders for season tickets or individual concert performances may be made through the UMD Ticket Office, Marshall Performing Arts Center. The UMD Coffee House series features young talented people who perform week-long engagements at the Bull Pub.

The University of Minnesota, Morris, each year presents a wide range of concerts, theatre attractions, recitals, lectures, films, and dance programs. Area residents as well as the campus community are invited to attend productions.

The Concerts and Lectures Committee at Crookston and the Convocations Committee at Waseca are composed of students and faculty and are responsible for planning special campus events and cultural and popular entertainment programs.

Equal Opportunity and Affirmative Action

The Office of Equal Opportunity and Affirmative Action is charged with the implementation of Regents' policy and the supervision of programs insuring equal opportunities for minorities and women in all areas. The office also monitors affirmative action efforts to determine if the University is in compliance with federal and state guidelines regarding equal opportunity.

The director of the office submits periodic reports to the Regents, University President, the Department of Health, Education, and Welfare, and to other federal and state agencies. The chief administrators of each University unit and their respective equal opportunity officers are responsible for insuring equal opportunity through the execution of affirmative action programs overseen by this office.

Further information on the activities of the office can be found in documents outlining the University's Affirmative Action Program and in the office's 1974-75 Annual Report to the Department of Health, Education, and Welfare.

Extension Services

Educational services of the University are extended to Minnesotans through activities of the two major extension units — the Agricultural Extension Service and Continuing Education and Extension (CEE).

Agricultural Extension Service is part of the University's Institute of Agriculture, Forestry, and Home Economics located on the St. Paul campus and is responsible for the extension-continuing education function of that unit.

A University staff of 250 extension agents in 91 counties is supported by 38 area extension agents in various areas of the state and by 148 specialists and a supervisory-administrative staff of 31 located on campus.

Agricultural extension involves the cooperative efforts of three levels of government: the county through the county Extension Committee, with funds authorized by the County Board of Commissioners; the state through the University of Minnesota, with funds appropriated by the state Legislature; and the federal government through the U.S. Department of Agriculture, with funds (commonly called Smith-Lever funds) appropriated by the Congress.

36

The Extension Service reaches nearly a third of the persons in Minnesota each year with almost 22,000 educational programs. Extension staff provide more than 500,000 consultations, 14,000 radio broadcasts, over 600 television programs, and 21,000 news releases each year. More than a million informational publications are distributed each year in conjunction with these educational activities and in response to inquiries covering a multitude of subject fields.

For more information, write: Director, Agricultural Extension Service, 240 Coffey Hall, University of Minnesota, St. Paul, Minn. 55108, or telephone (612) 373-1246.

Continuing Education and Extension keeps the University's door open to the people of Minnesota by means of classes, conferences, seminars, lectures, correspondence courses, individual counseling, independent study, telephone, radio, television, libraries, films, exhibits, and consulting services.

Flexible class scheduling, as to time, place, and medium, accommodates students of all ages who cannot or do not wish to attend regular day

school classes, whether to pursue a degree or to acquire knowledge for vocational use or personal interests.

CEE also provides service to communities through programs for people in various economic and social groups and programs relating to services of a health-care, educational, governmental, or welfare nature.

During 1974-75 nearly 75,000 persons registered and paid fees in extension courses, both credit and noncredit, at undergraduate, post-baccalaureate, and professional levels. Except for 130,000 film bookings, no attempt is made to keep accurate count of the thousands who use library, consulting, and counseling services, view art exhibits, or listen to KUOM radio.

For more information about educational services available, contact Continuing Education and Extension, 150 Westbrook Hall, University of Minnesota, Minneapolis, Minn. 55455, telephone (612) 373-3900, or the CEE offices on the coordinate campuses, at Rochester, or at Marshall.

Freshwater Biological Institute

The Freshwater Biological Institute, located adjacent to a marsh on Lake Minnetonka in Navarre, officially opened July 1974. The Institute, which is part of the College of Biological Sciences, provides facilities and equipment enabling faculty members and students to conduct basic research essential to understanding the complex problems of freshwater ecology. The laboratory, constructed entirely with private funds for the University, houses resident faculty members, visiting researchers, and graduate students.

For more information, contact the Institute, P.O. Box 100, County Roads 15 and 19, Navarre, Minn. 55392; (612) 471-8476.

Honorary Degrees

Honorary degrees are conferred sparingly by the University of Minnesota. The first was given in 1925, and as of fall 1975 only 50 had been given. Recipients of honorary degrees have included Senator Hubert H. Humphrey (1966), Frederick R. Kappel (1966), James P. Shannon (1966), Melvin Calvin (1969), John H. Van Vleck (1971), Harold E. Stassen (1972), and John Bardeen (1973).

James Ford Bell Museum of Natural History

The James Ford Bell Museum of Natural History, 17th and University Avenues S.E., Minneapolis, features exhibitions of the wildlife of Minnesota, a natural history library, extensive study collections of birds, mammals, reptiles, amphibians, and fish, and the Jaques Gallery of natural history art.

The museum is free and is open from 9 a.m. to 5 p.m. Monday through Saturday (Wednesday until 9 p.m.), and from 2 to 5 p.m. on Sunday. Guide services are available to groups of 15 or more upon advance request. A store in the lobby sells books, prints, stationery, and records of bird and animal calls. Call (612) 373-2423 for further information.

The museum's Touch and See Room is an area with pelts, bones, and mounted heads of animals arranged in low open displays for close inspection by young children and adults. All objects may be handled. The Touch and See Room is air conditioned and contains a reading room with a wide collection of children's books, maintained by the Minneapolis Public Library Children's Department.

38

Lake Superior Basin Studies Center

The Lake Superior Basin Studies Center on the Duluth campus serves as a clearinghouse to coordinate scientific and socio-economic research related to the area. It operates in four areas: examining existing lake conditions and relating them to people who live in the area; seeking to predetermine the effects of man's endeavors on the lake; providing public agencies and industries with analyses of materials that could affect the lake and the area; and developing educational programs in environmental studies.

Landscape Arboretum

The University of Minnesota's Landscape Arboretum is a 558-acre horticulture research facility and outdoor scientific laboratory. The Arboretum, four miles west of Chanhassen on State Highway 5, is used by University horticulturists to test and develop hardy ornamental shrubs and trees for landscaping homes, other buildings, and highway

areas in Minnesota. Purpose of this research is to increase the number of varieties that will withstand Minnesota's severe climatic conditions.

In 1958, the University received the deed to a 160-acre tract of woodland and meadow from the Minnesota State Horticultural Society, along with a check for initial development of the site. Maintenance of the Arboretum's more than 3,000 kinds of plants is financed jointly by the University and by gifts from private donors.

Miles of woodland trails make it possible to walk through the Arboretum to study the carefully labeled plantings. Limited picnic facilities are available. A new education and research building contains classrooms, an auditorium, a library, a tea room, and a gift shop. Classes on horticultural subjects are offered both for University credit and for noncredit.

Marshall W. Alworth Planetarium

UMD's Marshall W. Alworth Planetarium offers free, public programs each Sunday at 2 p.m. during the academic year. Special showings may be arranged by contacting the planetarium director at (218) 726-7129. Because staff is limited, preference for special showings is given to local school groups when necessary.

Minnesota Marine Advisory Service

Duluth's Minnesota Marine Advisory Service is a cooperative venture between the federal government and the University of Minnesota. It was opened in January 1975 to develop educational and informational programs for the people who use Minnesota's coastal areas. Educational programs are coordinated by Continuing Education and Extension and the Agricultural Extension Service. The service is available to interested groups, private industry, government agencies, and the general public. Offices are in 325 Administration Building on the UMD campus.

News Services

News of all-University or Twin Cities campus significance is prepared, edited, and distributed by the University News Service on the Twin Cities campus. News services are also located on the Duluth, Morris, Crookston, and Waseca cam-

pus. In addition, special news services handle information for the Institute of Agriculture, Forestry, and Home Economics and the Department of Intercollegiate Athletics, Twin Cities campus.

Nobel Prize Winners

Norman C. Borlaug (Alumnus)	Peace Prize	1970
Melvin Calvin (Alumnus)	Chemistry	1961
John Bardeen (Former Faculty)	Physics	1956, 1972
Walter H. Brattain (Alumnus)	Physics	1956
Philip S. Hench (Faculty, deceased)	Medicine	1950
Edward C. Kendall (Faculty, emeritus)	Medicine	1950
Ernest O. Lawrence (Alumnus, deceased)	Physics	1939

President's Home

40 Eastcliff, home of the President of the University of Minnesota, was a gift from the Edward Brooks family to the University in 1958. Mr. Brooks, a prominent Northwest lumberman, built the home in 1922. The 18-room white Georgian colonial occupies a two-acre homesite that also includes a swimming pool, tennis court, flower gardens, shrubbery, and stately trees. The home and grounds at 176 North Mississippi River Boulevard are maintained by the University.

Publications

The Minnesota Daily is the independent student newspaper for the Twin Cities campus. It is published daily during the academic year and three times each week during summer sessions, but is not published when classes are not in session. Staff offices are in Murphy Hall.

The Statesman, the independent student newspaper at the Duluth campus, is published weekly during the academic year. Staff offices are in the Kirby Student Center. **Summer Session News** is published weekly during summer session by the Office of Campus Relations, 305 Administration Building.

C.C. Writer is the weekly student newspaper at Morris, published during the school year when classes are in session.

The Commentator is the official student newspaper at the Crookston campus. Published biweekly, it is distributed quarterly to parents.

Ram-Page is the student newspaper for the Waseca campus. It is published monthly throughout the year.

The Catalog of the University is published in sections referred to as bulletins of the particular schools or colleges. Most college bulletins are published biennially; an exception is the annual *General Information Bulletin*. The Office of Admissions and Records arranges for publication and distribution of Twin Cities bulletins and has responsibility for the mailing permit used.

Report, a tabloid newspaper for faculty and staff members, is published twice a month during the academic year and once a month during the summer by the Department of University Relations. It includes news and feature articles from all campuses of the University.

Brief, a weekly bulletin of current University news items (biweekly during the summer), is produced for the Office of the President by the Department of University Relations, Twin Cities campus. It is distributed to faculty, staff, and student leaders on all campuses.

Update, published by the Department of University Relations on the Twin Cities campus, is a quarterly description of the University, its people, and its goals. It is mailed to alumni, parents of University students, and other external constituencies.

Focus is a monthly publication issued by the Department of University Relations on the Morris campus. It contains general information about UMM and is distributed to various audiences outside the University in West Central Minnesota and throughout the state.

Inside Out, a multiple-constituency (general audience) newsletter, is published each month from September through May by the University Relations staff in Crookston. It features graphic art and primarily human interest articles about faculty, civil service personnel, students, and alumni of the Technical College. Intended to foster goodwill rather than to convey information, *Inside Out* is sent to parents of students currently enrolled, recent graduates, advisory committee

members, civic leaders, friends of the institution, and educators, among others.

The Twin Cities Campus Calendar is published each quarter by the Department of University Relations on the Twin Cities campus and provides a brief summary of some of the important events on the campus. Copies are available from the department, S-68 Morrill Hall, Minneapolis.

The Student-Staff Directory, published each fall by the Department of University Relations on the Twin Cities campus, contains listings of staff members, Twin Cities campus students, and the various departments and divisions of the University. Copies are distributed through departmental offices and campus bookstores.

The Biennial Report, issued every two years by the Twin Cities campus Department of University Relations, summarizes the activities of the various departments and units of the University during the two-year period following the previous issue. The *Biennial Report* series is a primary source of comprehensive information on enrollments, curriculum changes, research and instruction efforts, faculty activities, and other developments within the academic, administrative, and support units of the University. Copies are available through the Bulletin and Service Bureau, B-3 Morrill Hall, Minneapolis. A complete set is available for reference in the University Archives, Walter Library, Minneapolis.

Campus and departmental publications include a variety of newsletters, magazines, and other publications that report on the activities of individual campuses, academic units, departments, and organizations.

Radio Stations

KUOM — the public radio service of the University and the Department of Continuing Education and Extension — provides a full schedule of news, music, public affairs, instructional programs, and the arts for the daylight listening hours. KUOM is a National Public Radio (NPR) network affiliate and carries NPR's popular award-winning news magazine program "All Things Considered," as well as the "NPR Concert of the Week," "Options," and the arts magazine series "Voices in the Wind."

Among KUOM's music offerings are a daily afternoon concert, and, on Saturdays, a program of music by popular artists of the past called "Artists and Archives." During the summer, KUOM presents "Thursday Night at the Opera."

KUOM's instructional programs feature a new "Classroom Lecture" series each quarter, which may be taken for college credit. Another instructional series, "Minnesota School of the Air," is aimed at the primary-grade, in-classroom audience. It provides a variety of programs of special interest and educational value to children.

The news and information unit of KUOM serves the broader community with special emphasis on in-depth coverage of international news. Agricultural concerns are given exposure in daily programming from the University's Agricultural Extension Service on the St. Paul campus.

KUOM broadcasts from studios on both the Minneapolis and St. Paul campuses of the University, with a transmitter power of 5,000 watts. Programs can be heard Monday through Friday from 10:30 a.m. to local sunset and Saturdays from noon to local sunset. Main offices are at 500 Rarig Center.

Founded in 1948, WMMR is a student operated radio station broadcasting exclusively to the dormitories on the Minneapolis campus of the University. The station is on the air 20 hours daily (during the school year) between 7 a.m. and 3 a.m., at a frequency of 730 kilohertz. WMMR broadcasts contemporary rock music, sports — including play-by-play of all Gopher football, basketball, hockey, and baseball home games — and news provided by staff reporters, the Associated Press, and the ABC Radio Network. It is a volunteer organization open to any student, regardless of background or major. Offices and studios are located at 329 Coffman Memorial Union.

KUMD, a 500-watt FM radio station, is operated by UMD students. Programming includes news, public affairs, and classical, jazz, and rock music as part of the station's "alternative radio" format. The University also owns WDTH, a 100,000-watt stereo FM station, which will go on the air upon determination of programming and format policy.

Administered, maintained, and operated by students, KUMM FM radio serves the Morris campus community, providing programming that is

both educational and entertaining.

KCUM, the Crookston campus FM radio station, broadcasts to listeners throughout northwestern Minnesota. It is operated exclusively by UMC students, most of whom are majoring in the electronic media sequence, rural communications. Programming includes local, national, and international news, music, and live play-by-play commentary of athletic events. Studios are located in the Learning Resources Center.

At Waseca a student-operated radio station began operation on an FM frequency on cable TV in the fall of 1975.

Speakers Bureaus

Information about speakers may be obtained by contacting the Speakers Bureau in the University Relations office on each campus. Lists of faculty and staff available to speak on a wide variety of topics have been compiled.

Television

44 Several University Television programs are produced weekly for broadcast over KTCA-TV, Channel 2, the Twin Cities area educational television station. Most of the programs are produced in Rarig Center by Media Resources of Continuing Education and Extension. They range from general informational programs, which cover a variety of subjects, to University credit courses offered by Extension Independent Study. Most of the programs utilize the resources and encourage the input of faculty and students, and develop from current areas of interest. University Television is a way of extending the University to the greater public. Program times and titles can be found in the daily television listings of the metropolitan newspapers, or obtained from the coordinator of broadcast television, at 373-2846.

The Waseca campus has a two-way link with the local cable company and can originate programs at three locations on campus and feed directly into the cable system.

Theatre

Each year the University Theatre on the Twin Cities campus presents a diversified program of

living drama, featuring classics as well as contemporary and experimental productions. There are also plays for young people, workshop productions, and numerous student-directed plays.

In fall 1973, the University Theatre moved to the new Rarig Center on the West Bank. Productions are scheduled for the Whiting Proscenium Theatre, the Stoll Thrust Theatre, the Arena Theatre, and the Experimental Theatre.

The Centennial Showboat plays a June, July, and August summer season on the Mississippi River, producing a wide variety of plays ranging from melodrama to Shakespeare. The Peppermint Tent, located on the east bank of the Mississippi, presents plays for youngsters each summer.

At Duluth, two basic objectives are pursued by the UMD Theater. The first is to provide practical theatrical experience for students who choose theatre arts as a vocation; the second is to provide an opportunity to view legitimate stage productions as another part of the individual's liberal education.

The production program consists of three main stage presentations directed and designed by the theatre faculty. A number of studio productions are directed by students under the supervision of the departmental staff. Productions are presented in the \$2.6 million Marshall Performing Arts Center, which houses a 600-seat main theatre and a smaller studio theatre, as well as complete facilities for set construction, costuming, and makeup.

UMD Theater also offers summer stock productions in conjunction with summer session classes.

At Morris, the UMM Theatre correlates its classroom work with at least one major production each quarter and one or two student-directed experimental or laboratory productions each year. These, plus other extracurricular activities (including the student drama organization, The Morris Meinings), provide opportunities for student participation in all areas of the theatre arts and exposure to a variety of dramatic experiences and staging methods including arena, thrust, proscenium, outdoor, and reader's theatre production.

Trojan Players, a dramatics organization for UMC students, stages at least three productions each year on the Crookston campus and also presents several plays in community facilities. The

theatre group has now been designated a "co-curricular activity," much like the school newspaper. As a result, the Players and their productions are regarded as an extension, or training laboratory, of the theatre curriculum offered under the Division of General Education.

The UMW Drama Club produces plays throughout the year.

Tours

The Visitor Information Center, at 101 Coffey Hall on the St. Paul campus, is the starting point for many tours of the Twin Cities campus. Student tour guides show visiting families, school groups, and other groups the highlights of the St. Paul and Minneapolis campuses, or areas of special interest to them. The animal barns are a favorite attraction for elementary schoolchildren. Tour requests should be made at least two weeks before the date a tour is desired, but every attempt is made to fill requests of shorter notice. Visitors who arrive unannounced may be given a campus map with a walking tour pencilled in, for use without a tour guide.

46 Tours of the Duluth campus are offered weekdays during the academic year at 10 a.m., 11:30 a.m., 1 p.m., and 2:30 p.m. from the Kirby Student Center information desk. During the summer, tours are given at 11 a.m. and 2 p.m. Special tour arrangements may be made by calling the information desk at (218) 726-7163. Visitors information and campus brochures may also be obtained at the student center.

Persons or groups who want to tour the Morris campus should contact the Admissions Office in 201 Behmler Hall, or call (612) 589-2116.

At Crookston educational tours of classroom buildings, other facilities, and the landscaped grounds can be arranged for small or large groups by contacting the University Relations office. Packets of information are also supplied on request.

Tours of the Waseca campus can be arranged by calling University Relations at (507) 835-1000, ext. 263 or 264. Arrangements for all non-campus groups and organizations wishing to use campus facilities for meetings, short courses, seminars, etc., are also handled by University Relations.

University Libraries

With collections totaling over three million volumes, the University of Minnesota Library ranks eleventh in size among those of American universities. In addition to the humanities and social science resources in Wilson Library, the basic science and technology collection in Walter Library, and the agriculture and home economics materials in the St. Paul Campus Central Library, there are more than 20 subject libraries on the Twin Cities campus.

The Duluth campus library has more than 207,000 volumes and receives more than 2,100 foreign and domestic magazines, newspapers, and other periodicals. Special collections include a 12,000-volume Children's Library, a collection of teaching materials, and the Voyageur Collection of materials covering the history of Northeastern Minnesota, Northern Wisconsin, Upper Michigan, and parts of Canada from 1650 to 1850. UMD also has a growing collection in its Health Sciences Library.

A cooperative agreement between UMD, the College of St. Scholastica, and the University of Wisconsin-Superior allows students from the three Twin Ports colleges to use the facilities and borrow materials from all three libraries. The agreement places more than half a million books at the disposal of students and faculty at the three campuses.

The Rodney A. Briggs Library, named for the first UMM provost, provides reading space for 600 students and shelves for 160,000 books. The library serves as a repository for selected government documents and is open to the public 85 hours a week.

The library collection in the Learning Resources Center at Crookston emphasizes holdings in the areas of agriculture, business, home and family services, and hotel, restaurant, and institutional management. Other media resources, notably in the audio-visual field, are also available to support the technical college curricula.

The Learning Resources Center on the Waseca campus includes the specialized collection of post-secondary, technical materials that relate to the broad fields of agriculture. In addition to the books, periodicals, pamphlets, microfilm, and audio-visual materials, this new

facility houses the other support departments of printing and graphics, audio-visual services, television, computer center, and the study-skills center.

All University of Minnesota libraries are interconnected by MINITEX (Minnesota Interlibrary Teletype Exchange), a cooperative system that shares the resources of all academic libraries and major public libraries in the state.

University of Minnesota Foundation

The University of Minnesota Foundation is a non-profit organization with tax deductibility for contributions with the sole beneficiary being the University of Minnesota. The basic purpose of the Foundation is to provide funds to meet certain needs of the University for which tax funds are not available. Its direction and resources are under the management of a Board of Trustees of concerned citizens with a strong interest in the University of Minnesota.

The Foundation provides the medium through which larger gifts (both deferred and living), in kind, securities, and monies may be sought from selected sources of support. During the past several years the Foundation has assisted in raising funds for, and supported, a variety of University projects, research, and student aid. These include the Regents' Professorship Program, Corporate Fellowship Program, Small Grants Program, Minnesota Messenia Expedition, Cardiovascular Research Center, Kidney Dialysis Center, European Bank Tour, and a number of student scholarships.

University Press

The University of Minnesota Press, the book publishing department of the University, extends the horizons of teaching and research beyond the campus to scholars, students, and general readers. It publishes research studies, textbooks, reference works, and books for general readers by University faculty members and other scholars and writers.

The Press maintains professional editorial, design, production, sales, promotional, and business staffs and distributes its publications through established book-trade channels in the United States and abroad.

University Traditions

Campus Mascots

Minnesota has been called the Gopher State since 1857. In the early 1930's, when Minnesota Gopher football teams were national champions, local press reporters described the University teams as the "golden-shirted horde" and the "golden swarm." At this time, the teams also changed to yellow or "golden-colored" jerseys, bringing about the name the Golden Gophers. The name has stuck for Twin Cities campus athletic teams.

The mascot at the University of Minnesota, Duluth, is the Bulldog. The name was selected in the 1930's by the Letterman's Club when the school was still the Duluth State Teachers College. The name was retained when Duluth became a University coordinate campus.

The Morris mascot is the Cougar, a name chosen in a campus-wide referendum in 1961.

The mascot at the University of Minnesota, Crookston, is the Trojan; the athletic teams are called the Trojans. The name is the result of a "Name the Team" contest conducted in 1966 by radio station KROX, Crookston. Selected by the student association on campus, the winning name was submitted by a student.

Ramus, the Waseca mascot, is present for home football games. The Rams is the name for the college sports teams.

School Colors

Because the University's colors varied during the early years, William Watts Folwell, first President of the University, appointed English instructor Augusta Norwood Smith to choose permanent school colors. Mrs. Smith, "a woman of excellent taste," according to Folwell, chose maroon and gold, the University's colors today. First used sometime between 1876 and 1880, the colors were not officially approved by the Regents until March 1940.

Songs

Hail! Minnesota, the University alma mater, was written by Truman Rickard, a member of the class of 1904, for use in a 1904 class play. A second verse was written by University student Arthur Upson in 1905. In 1945, the song became the official anthem of the state of Minnesota.

The Minnesota Rouser, sung at most University athletic events, was written by Floyd M.

Hutsell in 1909 in response to a contest sponsored by the Minneapolis *Tribune*. Hutsell, a Minneapolis choir director and voice teacher, won \$100 in the contest to choose a fight song for the University.

University Seal

The antique lamp on the seal represents the metaphysical sciences; the telescope, the physical sciences; the plow, the industrial arts; and the pallet with brushes, the fine arts. The motto, written in Latin, means "a common bond for all the arts."



University Symbol

The official University symbol was originated by the Graphic Design service department and adopted in 1971. The design is a modification of the basic UM letterforms to provide a personalized mark of strong visual identity. The symbol is used on all University stationery and is the preferred identity mark for all communications. The Regents seal is reserved for documentary use as the official seal of the University.



William R. Bagley Nature Area

The William R. Bagley Nature Area, located on the northwest corner of the Duluth campus, covers 24 acres of natural forest supporting native vegetation and small animals. Also on the site are a small lake and the Rock Hill ski tow. Wood chip trails and stairways and bridges accommodate public exploration of the area.

University Calendar — Academic Year 1975-76

Fall Quarter

Sept. 8	Classes begin, Crookston
Sept. 22	Classes begin, Duluth
Sept. 29	Classes begin
Nov. 21	End of fall quarter, Crookston
Dec. 1	Classes begin, Crookston
Dec. 3	Last day of instruction, Duluth
Dec. 9	Last day of instruction
Dec. 11-17	Final examinations
Dec. 12	Last day of instruction, Waseca
Dec. 17	Commencement, Twin Cities campus
Dec. 11-26	Orientation, registration

Winter Quarter

Jan. 5	Classes begin
Feb. 27	End of winter quarter, Crookston
March 8	Classes begin, Crookston
March 11	Last day of instruction, Duluth
March 12	Last day of instruction
March 15-20	Final examinations
March 22-26	Orientation, registration

Spring Quarter

March 29	Classes begin
May 21	End of spring quarter, Crookston Commencement, Crookston
June 4	Last day of instruction
June 7-12	Final examinations
June 11	Last day of instruction, Waseca Commencement, Duluth, Morris, and Waseca campuses
June 12	Commencement, Twin Cities campus

Summer Session 1976

FIRST TERM

June 7	Orientation, registration, Crookston
June 8	Classes begin, Crookston
June 15	Classes begin
June 16	Classes begin, Duluth
July 2	Last day of term, Crookston
July 16	Last day of term
July 17	Last day of term, Duluth

SECOND TERM

July 5	Registration, Crookston
July 6	Classes begin, Crookston
July 20	Classes begin

Aug. 6 Last day of term, Crookston
Aug. 20 Last day of term
 Commencement,
 Duluth campus

Summer Quarter 1976 (Waseca only)

June 28 Classes begin
Sept. 10 Last day of instruction

Academic Year 1976-77

Fall Quarter

Sept. 27 Classes begin
Dec. 3 Last day of instruction
Dec. 6-11 Final examinations
Dec. 11 Commencement,
 Twin Cities campus