

Liberal Arts
Bulletin Supplement
Spring 1989

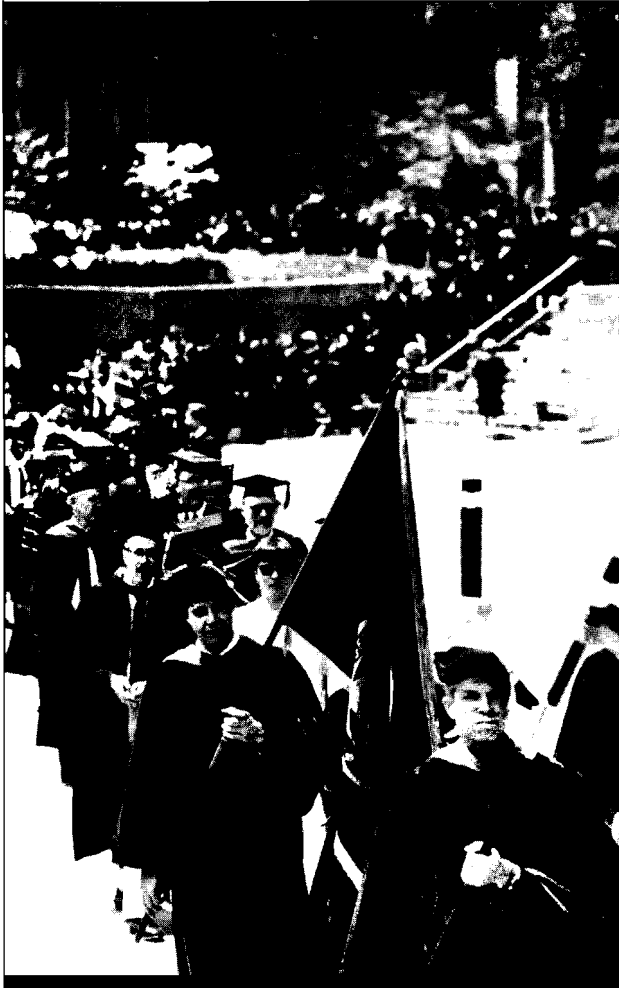


Photo by Rob Levine

COLLEGE OF LIBERAL ARTS BULLETIN SUPPLEMENT UNIVERSITY OF MINNESOTA SPRING 1989

This is a supplement to the 1988-90 *CLA Bulletin*.

New Courses	3
Bulletin Changes	9
Changes in Group Distribution Requirements	10
Changes in World Studies Requirements	11
Changes in Cultural Pluralism Requirements	11
Changes in Route II Course List	11
Number Changes	12
Rubric Changes	12

Changes in course prerequisites and credits are described in the *Class Schedule*.

Students with questions about the following material should call or visit the appropriate department office.

Prepared by the CLA Editor's Office, 203 Johnston Hall, 101 Pleasant St. S.E., College of Liberal Arts, University of Minnesota, Minneapolis, MN 55455 (624-2848).

Published February 1989

The University of Minnesota is committed to the policy that all persons shall have equal access to its programs, facilities, and employment without regard to race, religion, color, sex, national origin, handicap, age, veteran preference, or sexual orientation.

NEW COURSES

These new courses have been approved since the publication of the 1988-90 *CLA Bulletin* and will be taught at a future time. Check the *Class Schedule* or the department office for the quarter, time, and place new courses are offered.

ANCIENT STUDIES (AnSt)

5120. ARCHAEOLOGY OF PREHISTORIC EUROPE. (4 cr, §Anth 3371, §Anth 5120)

Early development of non-Mediterranean European society from Old Stone Age through Iron Age to the Roman period, based on archaeological evidence. Transformations of European culture with the introduction of agriculture, the development of metallurgy and trade, and the emergence of towns and cities.

ANTHROPOLOGY (Anth)

3005. BEHAVIORAL BIOLOGY OF THE HUMAN LIFE CYCLE. (4 cr; prereq 1101 or introductory biology course or #)

Stages of the human life cycle from biological and evolutionary perspectives. Lectures focus on conception, birth, childhood, mate choice, aging, and death. Readings and discussions focus on cross-cultural differences and personal relevance in society today.

3006. PRIMATE BEHAVIOR AND ECOLOGY. (4 cr; prereq 1101 or #)

Study of primates, emphasizing social behavior and ecology. Lectures cover taxonomy, anatomy, social structures, mating systems, and behaviors from an evolutionary perspective. Also discusses current issues, such as primate conservation.

3111. INTRODUCTION TO ARCHAEOLOGY. (5 cr)

Fundamentals of archaeological field and laboratory analysis.

3371. ARCHAEOLOGY OF PREHISTORIC EUROPE. (4 cr, §5120, §AnSt 5120)
For description, see AnSt 5120.

3513. HISTORIC ARCHAEOLOGY OF EASTERN NORTH AMERICA. (4 cr)
Historic archaeology of eastern North America from contact to late 19th century. Focuses on Euro-American and other non-native populations.

5120. ARCHAEOLOGY OF PREHISTORIC EUROPE. (4 cr, §3371, §AnSt 5120)
For description, see Anth 3371.

5301. ADVANCED METHOD AND THEORY IN ARCHAEOLOGY. (4 cr; prereq 3111 or #)

Contemporary theoretical and methodological issues and approaches in archaeology.

5520. CURRENT ISSUES IN ARCHAEOLOGY. (4 cr; prereq 3111 or #)

Current theoretical and/or methodological issues in archaeology.

5524. ARCHAEOLOGICAL RESEARCH DESIGN. (4 cr; prereq 12 cr in 3-5xxx level archaeology coursework or #, jr or sr anthropology major; recommended for anthropology majors specializing in archaeology who select the sr project option)

Students conduct background research, prepare an annotated bibliography, develop a research proposal, and delineate techniques, methods, and concepts for the senior research project.

ARCHITECTURE (Arch)

3121. ARCHITECTURAL RENDERING: HISTORICAL AND CONTEMPORARY INFLUENCES. (4 cr, §LA 3121; prereq ArtS 1101, architecture or landscape architecture or environmental design major or #)

Explores relationships between depiction and built form through historical manifestations. Examines Beaux arts watercolor, modern value delineation, and electronically-based techniques.

3511. INTRODUCTION TO ARCHITECTURAL STRUCTURES. (4 cr; prereq 3081, Math 1221, Phys 1042, 1046, architecture major)

Theories, methods of analysis, and design of architectural structures within the context of modern engineering. Fundamentals of structural behavior. Limitations and properties of structural elements and systems and their architectural applications.

ART HISTORY (ArtH)

3325. MICHELANGELO: HIS WORK IN ITS TIMES. (4 cr)

Integrated view of Michelangelo's sculpture, painting, and architecture within the context of his times. Use of relevant preparatory drawings in facsimile and contemporary texts in translation to understand the works' inception and character.

3960. TOPICS IN ART HISTORY. (4 cr per qtr [12 cr max])

ARTS, STUDIO (ArtS)

3602. ADVANCED COMPUTER GRAPHICS AND ANIMATION. (3 cr; prereq 1602 [through Extension only])

Techniques, methods, and concepts introduced in ArtS 1602 are refined to produce a final project with superior graphics and animation. Stresses creative use of Amiga and other microcomputers.

3604. INTERDISCIPLINARY ELECTRONIC PROJECTS. (3 cr; prereq 3601 or 3602 or 3603 or #)

Examines alternative approaches to the creation of works using any combination of the electronic arts: video, computers, audio, projected light; possible interface with other art forms (theatre, dance, painting, sculpture). Stresses conceptual concerns and experimentation with ways of creating and manipulating images and sounds.

3615. VIDEO EDITING. (3 cr; prereq 1601 [through Extension only])

Develops technical and artistic skills used in video editing. Examines works from many genres for range of editing styles, strategies, and technology.

3655. VIDEO AS AN ART FORM. (3 cr)

Explores various video genres (including documentary, performance, installation, conceptual, and expressive) from a number of critical positions; examines the relationship of the genres to politics and the arts. Includes viewings and discussions of significant video work and readings from prominent video artists and critics.

5620. ADVANCED COMPUTER GRAPHICS AND ANIMATION. (3 cr; prereq 3602)

For description, see ArtS 3602.

5640. INTERDISCIPLINARY ELECTRONIC PROJECTS. (3 cr; prereq 3604)

For description, see ArtS 3604.

ASTRONOMY (Ast)

5299H. SENIOR HONORS ASTROPHYSICS RESEARCH SEMINAR. (1 cr; prereq CLA or IT upper division honors student, #; 1½ seminar hrs per wk)

CHEMISTRY (Chem)

5765. BIOINORGANIC CHEMISTRY. (4 cr; prereq 5732 or equiv, CLA or IT chemistry major or grad or #; 4 lect hrs per wk)

Role of metal ions in biology. Emphasizes structure, function, and spectroscopy of metalloproteins and their synthetic analogues.

CLASSICAL AND NEAR EASTERN STUDIES— CLASSICS (Clas)

1201. THE OLYMPIC GAMES. (4 cr, §3201, §ClCv 3201)

Surveys the Olympic Games (776 B.C. to A.D. 338) and compares them with other ancient and modern athletic festivals. Slides illustrate sites and athletic events. Discusses victors and their trophies.

3201. THE OLYMPIC GAMES. (4 cr, §1201, §ClCv 3201)

For description, see Clas 1201.

CLASSICAL CIVILIZATION (ClCv)

3980. DIRECTED INSTRUCTION. (Cr ar; prereq #)

COMPUTER SCIENCE (CSci)

5205. PARALLEL COMPUTER ARCHITECTURE. (4 cr; prereq 5201 or #, CLA or IT upper division computer science major or grad)

Parallel computer system analysis and design. Organizational dependence on computations performed. Primary components of parallel architectures (processors, control units, memories, interconnection networks). Implemented paradigms of pipelines and vector, array, and multi-processors.

GEOGRAPHY (Geog)

5371. NORTH AMERICAN CITIES. (4 cr; prereq 1301 or 1501 or 1970 or 3973 or 3371 or 5001)

Emergence of towns and cities in North America; the urban economy and its location requirements; central place theory; comparisons of city systems in capitalist, socialist, and developing areas; land use inside urban areas, structure, and change.

GERMAN (Ger)

5621. GERMAN CINEMA FROM CALIGARI TO HITLER. (4 cr; prereq 3xxx film studies course or #; may be taken for credit toward a German major or minor by doing a portion of the reading in German)

German cinema from its beginning, through its "golden age" in the 1920s, until the end of the Weimar Republic in 1933. Includes expressionism and New Objectivity. Leading directors: Lang, Lubitsch, Murnau, Pabst, Rye, Wiene.

HISTORY (Hist)

- 3450. TOPICS IN SOUTHEAST ASIAN HISTORY.** (4 cr)
- 3709. REVOLUTIONS IN MODERN CENTRAL EUROPE.** (4 cr; prereq 1001, 1002, 1003 or 3001, 3002, 3003 or equiv)
Comparisons of types of revolutions in Central Europe during the modern era. Causes of and social groups most involved and affected in these revolutions.
- 3725. THE WORLD CONFLICT: 1931-1945.** (4 cr)
Social, political, and economic origins of worldwide international conflict from the Great Depression to the end of World War I.
- 5620. TOPICS IN EARLY MODERN EUROPE.** (4 cr; prereq #)
- 5890. TOPICS IN AMERICAN INDIAN SOCIAL HISTORY.** (4 cr per qtr [12 cr max]; prereq #)
Social history of American Indian groups across time and space. Focuses on historical demography, gender roles, interracial relationships, urbanization, and internal differences within Indian communities.

INTERNATIONAL RELATIONS (IntR)

- 5931. INTERNSHIP SEMINAR, MSID.** (4 cr; prereq admission to MSID or #)
Focuses on intercultural living and learning, and undertaking research activities in selected developing nations to prepare for internships in overseas development agencies.

JOURNALISM AND MASS COMMUNICATION (Jour)

- 1003H. PRODUCING MASS MEDIA MESSAGES.** (4 cr; prereq 1001, fr comp exemption, honors division regis, pre-journalism professional or pre-mass communication status, #, Δ)
- 5827. THE PRESS IN EASTERN EUROPE.** (4 cr; prereq #, Δ)
Operation and functions of the press in East-Central European communist states and how Marxist press theories are applied. Examines the development and evolution of the press, as well as of underground and opposition media.

LEARNING AND ACADEMIC SKILLS (LASK)

- 1301. CAREER PLANNING FOR DISABLED STUDENTS.** (2 cr [not for CLA degree credit])
Assessment of disabled student interests, values, personality, skills, and abilities; vocational exploration; job analysis; decision making; computerized career exploration.
- 1302. JOB SEEKING SKILLS FOR DISABLED STUDENTS.** (2 cr [not for CLA degree credit]; prereq 1301 or equiv)
Job search strategies, interviewing, resume writing, cover letters, self-advocacy, and networking for disabled students.
- 1303. INTERNSHIP EXPERIENCE FOR DISABLED STUDENTS.** (2 cr [not for CLA degree credit]; prereq 1302 or equiv)

MEDIEVAL STUDIES (MeSt)

- 3610. TOPICS IN MEDIEVAL STUDIES.** (4 cr)
Topics specified in the *Class Schedule*.

MUSIC (Mus)

1002. FUNDAMENTALS OF MUSIC II. (4 cr; prereq 1001)

Procedures for harmonizing melodies such as chord construction and succession, voice leading, and stylistic considerations. Development of basic listening, singing, and keyboard facility. Rigorous review of music fundamentals.

PHILOSOPHY (Phil)

5622. PHILOSOPHY AND FEMINIST THEORY. (4 cr; prereq 8 cr in philosophy or women's studies or #)

Examines encounters between philosophy and feminism, such as gender's influence in traditional philosophical problems and methods, and the social role of the theorist and of theorizing as they relate to the politics of feminism.

PHYSICS (Phys)

5401H. SENIOR HONORS SEMINAR. (1 cr per qtr [3 cr max]; prereq CLA or IT upper division physics honors student, #; 1½ seminar hrs per wk)

RELIGIOUS STUDIES (RelS)

3072. THE NEW TESTAMENT. (4 cr, §5072, §Clas 3072, §Clas 5072)

First-century Israel under Roman rule. Jesus of Nazareth. Earliest Christian communities. Mission to Gentiles. Paul the Apostle. Beginnings of the New Testament.

3100. JUDAISM IN THE TIME OF EARLY CHRISTIANITY. (4 cr, §JwSt 3100) History, religion, and literature of Judaism in Palestine, the Roman world, and Parthian and Sassanian Babylonia in the 2nd through 7th centuries. Methods for reconstructing the history of a religion from primary sources and evidence.

3251. THE MODERN STUDY OF THE OLD TESTAMENT. (4 cr, §ANE 3251) Methods employed in the study of the Old Testament, including textual criticism, the anthropological approach, form criticism, the sociological approach, the history of religion, and the uses of archaeology in interpreting the text.

3501. ANCIENT ISRAEL. (4 cr, §ANE 3501) History of Israel and development of its religion from earliest times through the intertestamental period. The foundation of the Hebrew people; patriarchal period; development of Israelite religious and legal institutions; conquest of Canaan; development of the monarchy and the united kingdom.

3502. ANCIENT ISRAEL. (4 cr, §ANE 3502) History of Israel and development of its religion from earliest times through the intertestamental period. The divided kingdom; classical prophecy, destruction, exile, and restoration.

3900. TOPICS IN JEWISH STUDIES. (4 cr per qtr, §JwSt 5900) Historical, religious, sociological, anthropological, and humanistic study of Judaism and the Jewish people. Approach and method of study varies with topic.

5072. THE NEW TESTAMENT. (4 cr, §3072, §Clas 3072, §Clas 5072) For description, see RelS 3072.

5101. RELIGION AND AMERICAN CULTURE. (4 cr, §AmSt 5101) Not a survey, but a representative profile of past and present religion in America, organized around a theme or problem.

SOUTH AND SOUTHWEST ASIAN STUDIES (SoAS)

3950. TOPICS IN SOUTH AND SOUTHWEST ASIAN STUDIES. (1-4 cr per qtr [12 cr max])

SPANISH AND PORTUGUESE—PORTUGUESE (Port)

3104. THE ART OF READING LUSO-BRAZILIAN LITERARY TEXTS. (4 cr; prereq 3014)

Introduction to the critical reading and interpretation of literary texts in Portuguese to provide analytical strategies for the study of various fictional forms.

SPANISH AND PORTUGUESE—SPANISH (Span)

3254. LATIN AMERICAN WRITING: BUILDING THE NATION. (4 cr; prereq 3104)

Analyzes writing uses by the liberal bourgeoisie in 19th-century Spanish America to promote its nation-building project. Examines major works of the period.

3255. VANGUARD, SOCIETY, AND WRITING IN LATIN AMERICA. (4 cr; prereq 3104)

Lyric and narrative trends in 20th-century Latin America. Latin America and the decline of the West. Challenge to modernization and the internationalization of discourse. Defiance to the discourse of power in the 1970s and 1980s.

3256. SPANISH AMERICAN CULTURAL DISCOURSE. (4 cr; prereq 3104)

Cultural assumptions in current modes of interpreting Spanish American reality. Representative texts analyzed.

3702. THE STRUCTURE OF SPANISH AND PORTUGUESE: MORPHOLOGY AND SYNTAX. (4 cr; prereq 3701 or #)

Introduction to the morphology and syntax of modern Spanish and Portuguese. Survey of derivational and inflection morphology; typical syntactic constructions.

THEATRE ARTS AND DANCE—DANCE (Dnce)

5550. TOPICS IN DANCE THEORY. (1 cr per qtr [3 cr max]; prereq 1040, #)
Topics specified in the *Class Schedule*.

BULLETIN CHANGES

B.I.S. SECOND LANGUAGE REQUIREMENTS

For B.I.S. students who entered CLA with 39 or more credits, the 1986 second language requirement went into effect fall 1988.

For further information on B.I.S. second language requirements for students entering into and graduating from CLA, see p. 9 of the 1988-90 *CLA Bulletin*.

CANCEL-ADDING LIMITS, see CLA Bulletin, p. 21

Please note that course entry after the first week requires written permission from the instructor, and after the first two weeks from the instructor and the Student Scholastic Standing Committee.

CREDIT REQUIREMENTS, see CLA Bulletin, top of p. 11

Credits earned by examination and credits for courses not listed in the 1988-90 *CLA Bulletin* (non-CLA courses) may not be applied toward the required 45 CLA credits. A maximum of 28 approved non-CLA credits, however, may be applied toward the overall credit requirements (except for the B.I.S., which permits 40 such credits if approved by the B.I.S. adviser).

[NOTE: The 1988-90 *CLA Bulletin* incorrectly states that a maximum of 16 (not 28) non-CLA credits may be applied toward the overall credit requirements.]

FINANCIAL AID AND COURSE CANCELLATION, see CLA Bulletin, p. 22

If you cancel your entire registration during a quarter, or cancel a course or courses causing your registration to fall below the level for which you are receiving financial aid (12 credits for full-time student status), you *may* be required to repay the Office of Student Financial Aid.

[NOTE: The 1988-90 *CLA Bulletin* incorrectly states that you will (not may) be required to repay the financial aid office.]

"INCOMPLETE" GRADES FOR S/N CLASSES—see CLA Bulletin, top of p. 28

Please note that beginning fall quarter 1988, a student who receives an incomplete (I) grade for an S/N course will have one quarter to complete the work and receive an S/N grade. If the work is not made up within one quarter, the "I" will automatically lapse to an "N" grade. If an I has lapsed to an N (or an F, if registered under the A-F grading system), instructors may, at their discretion, resubmit an I or evaluate completed coursework and submit a grade.

REPEATING COURSES, see CLA Bulletin, p. 20

Please note that when one repeats a course in which an F or a D grade was received, both grades earned appear on the official transcript and both grades are computed into the GPA, though graduation credit is awarded for only one course.

SPECIAL EXAMINATIONS FOR CREDIT, see CLA Bulletin, p. 26

Please note that credit by special examination is *not* given for second language coursework below the college's entrance standard.

"V" REGISTRATION, see CLA Bulletin, p. 28

Please note that students may *not* repeat for credit a course that they have audited (i.e., registered for as a visitor or auditor).

WITHDRAWAL FROM A COURSE, see CLA Bulletin, p. 28

Official withdrawal from a course after the second week of classes is recorded on your transcript. A course cancellation filed before the sixth week of classes ensures that a W, rather than an F, is formally entered on your record. Cancellations made before the end of the second week of classes are not noted on your transcript.

CHANGES IN GROUP DISTRIBUTION REQUIREMENTS

GROUP A—LANGUAGE, LOGIC, MATHEMATICS, AND THE STUDY OF ARGUMENT

Span, add 3702

GROUP B—THE PHYSICAL AND BIOLOGICAL UNIVERSE

Anth, add 3005, 3006

GROUP C—THE INDIVIDUAL AND SOCIETY

C-1, INDIVIDUAL AND INSTITUTIONAL BEHAVIOR

Clas, add 1201/3201

C-2, THE HISTORICAL PERSPECTIVE

EAS, add 3201, 3202
Hist, add 3424, 3709
RelS, add 3501, 3502
WoSt, delete 3307

C-3, SOCIAL AND PHILOSOPHICAL ANALYSIS

Clas, add 3072

GROUP D—LITERARY AND ARTISTIC EXPRESSION

Afro, add 3591, 3592

ArtH, add 3325, 3909

ArtS, add 1602 (by extension only), 3655

Clas, add 3081, 3083

Engl, add 3001, 3009, 3111, 3112, 3113, 3115, 3116, 3117, 3118, 3119, 3121, 3218, 3241, 3242, 3251, 3252, 3355, 3356, 3357, 3411, 3412, 3413, 3591, 3592, 3621, 3631, 3651, 3671

Mus, delete 1511

Port, add 3104

RelS, add 3251

Scan, add 3601

Span, add 3614

WoSt, add 3307

CHANGES IN WORLD STUDIES REQUIREMENTS

Afro, add 3421

ArtH, add 3909

Chn, add 3063

EAS, add 3201, 3202, 3281, 3013

Hist, delete 5021, 5022; add 3450

JwSt, add 3034

SoAS, add 1504

CHANGES IN CULTURAL PLURALISM REQUIREMENTS

AmSt, add 3701, 3702

CLit, add 3979

ID, delete 3979

CHANGES IN ROUTE II COURSE LIST

HEBREW

RelS, add 3100, 3251, 3501, 3502

NUMBER CHANGES

The table below records changes from "old" (1988-90 *CLA Bulletin*) to new numbers. Students should not register for courses under the new numbers if they have received credit for equivalents under old numbers.

	OLD NUMBER	NEW NUMBER
ArtS	3601H	3411H
ArtS	3602H	3412H
ArtS	3603H	3413H
ArtS	3604H	3414H
ArtS	3605H	3415H
ArtS	3606H	3416H
Lat	5235	5420

RUBRIC CHANGES

The table below records changes from "old" (1988-90 *CLA Bulletin*) to new course designators. Students should not register for courses under the new rubrics if they have received credit for equivalents under old designators.

	OLD RUBRIC	NEW RUBRIC
5504H	Russ	Slav

Liberal Arts
Bulletin Supplement
Summer 1989



Photo by Rob Levine

UNIVERSITY OF MINNESOTA COLLEGE OF LIBERAL ARTS BULLETIN SUPPLEMENT SUMMER 1989

This is a supplement to the 1988-90 *CLA Bulletin*.

New Courses	3
Changes in Majors	18
Changes in Minors	20
Bulletin Changes	21
Changes in Group Distribution Requirements	24
Changes in World Studies Requirements	25
Changes in Cultural Pluralism Requirements	25
Changes in Route II Course List	25
Number Changes	26
Rubric Changes	27

Changes in course prerequisites and credits are described in the *Class Schedule*.

Students with questions about the following material should call or visit the appropriate department office.

Prepared by the CLA Editor's Office, 203 Johnston Hall, 101 Pleasant St. S.E., College of Liberal Arts, University of Minnesota, Minneapolis, MN 55455 (phone 612/624-2848).

Published July 1989

The University of Minnesota is committed to the policy that all persons shall have equal access to its programs, facilities, and employment without regard to race, religion, color, sex, national origin, handicap, age, veteran preference, or sexual orientation.

NEW COURSES

These new courses have been approved since the publication of the 1988-90 *CLA Bulletin* and will be taught at a future time. Not all courses begin fall quarter. Check the *Class Schedule* or the department office for the quarter, time, and place new courses are offered.

AFRO-AMERICAN AND AFRICAN STUDIES (Afro)

3141. **AFRICA.** (4 cr, §Geog 3141)
Regional differentiation of human groups and environments. Cultural contact and problems of underdeveloped countries south of the Sahara.
5002. **HISTORY OF THE CIVIL RIGHTS MOVEMENT.** (4 cr; prereq #)
The development of the civil rights movement in the context of broad changes in American society. New approaches to the study of movement emergence and articulation.
5121. **CARIBBEAN HISTORY PROSEMINAR.** (4 cr; prereq #)
Historical development of the Caribbean region, emphasizing major themes and approaches in the field.
5142. **GEOGRAPHY OF EAST AFRICA.** (4 cr, §Geog 5142)
Physical and human geography of Kenya, Tanzania, and Uganda. Environment as resource; historical geography of colonial and postcolonial eras.
5143. **GEOGRAPHY OF WEST AFRICA.** (4 cr, §Geog 5143)
West Africa from Senegal to Cameroon. Social geography of resource use, population, settlement, economic development, and international relations.
5200. **BLACK AMERICANS AND MENTAL HEALTH.** (4 cr; prereq grad or #)
Analysis of factors and issues affecting mental health of black Americans. Current trends in public policy and mental health.
5341. **SEMINAR IN CONTEMPORARY KENYAN LITERATURE.** (4 cr; prereq one course in African studies or #)
Emphasis on the novels of Ngugi, Mwangi, Njau, and Ruheni. Prose works and critical essays. All readings in English.
5591. **INTRODUCTION TO AFRO-AMERICAN LITERATURE.** (4 cr, §3591, §Engl 3591)
Afro-American prose, poetry, and drama from the late-18th to the mid-20th century.
5592. **INTRODUCTION TO BLACK WOMEN WRITERS.** (4 cr, §3592, §Engl 3592)
Literary tradition of Afro-American women writers in novels, short stories, poetry, essay, autobiography, and drama from the 18th to the 20th century.

ANCIENT STUDIES (AnSt)

5110. **TOPICS: FIELD RESEARCH INTO ORIGINS OF CITIES.** (2-8 cr)
Theory and method of interdisciplinary field research into origins and development of cities with focus on archaeological and archival study. Includes lectures, demonstrations, laboratory sessions, and training in data recovery.
5120. **ARCHAEOLOGY OF PREHISTORIC EUROPE.** (4 cr, §Anth 3371, §Anth 5120)
Early development of non-Mediterranean European society from Old Stone Age through Iron Age to the Roman period, based on archaeological evidence. Transformations of European culture with the introduction of agriculture, the development of metallurgy and trade, and the emergence of towns and cities.

ANTHROPOLOGY (Anth)

- 3005. BEHAVIORAL BIOLOGY OF THE HUMAN LIFE CYCLE.** (4 cr; prereq 1101 or introductory biology course or #)
Stages of the human life cycle from biological and evolutionary perspectives. Lectures focus on conception, birth, childhood, mate choice, aging, and death. Readings and discussions focus on cross-cultural differences and personal relevance in society today.
- 3006. PRIMATE BEHAVIOR AND ECOLOGY.** (4 cr; prereq 1101 or #)
Study of primates, emphasizing social behavior and ecology. Lectures cover taxonomy, anatomy, social structures, mating systems, and behaviors from an evolutionary perspective. Also discusses current issues, such as primate conservation.
- 3111. INTRODUCTION TO ARCHAEOLOGY.** (5 cr)
Fundamentals of archaeological field and laboratory analysis.
- 3371. ARCHAEOLOGY OF PREHISTORIC EUROPE.** (4 cr, §5120, §AnSt 5120)
For description, see AnSt 5120.
- 3513. HISTORIC ARCHAEOLOGY OF EASTERN NORTH AMERICA.** (4 cr)
Historic archaeology of eastern North America from contact to late 19th century. Focuses on Euro- American and other non-native populations.
- 5120. ARCHAEOLOGY OF PREHISTORIC EUROPE.** (4 cr, §3371, §AnSt 5120)
For description, see AnSt 5120.
- 5301. ADVANCED METHOD AND THEORY IN ARCHAEOLOGY.** (4 cr; prereq 3111 or #)
Contemporary theoretical and methodological issues and approaches in archaeology.
- 5520. CURRENT ISSUES IN ARCHAEOLOGY.** (4 cr; prereq 3111 or #)
Current theoretical and/or methodological issues in archaeology.
- 5524. ARCHAEOLOGICAL RESEARCH DESIGN.** (4 cr; prereq 12 cr in 3-5xxx level archaeology coursework or #, jr or sr anthropology major; recommended for anthropology majors specializing in archaeology who select the sr project option)
Students conduct background research, prepare an annotated bibliography, develop a research proposal, and delineate techniques, methods, and concepts for the senior research project.

ARCHITECTURE (Arch)

- 3121. ARCHITECTURAL RENDERING: HISTORICAL AND CONTEMPORARY INFLUENCES.** (4 cr, §LA 3121; prereq ArtS 1101, architecture or landscape architecture or environmental design major or #)
Explores relationships between depiction and built form through historical manifestations. Examines Beaux arts watercolor, modern value delineation, and electronically-based techniques.
- 3511. INTRODUCTION TO ARCHITECTURAL STRUCTURES.** (4 cr; prereq 3081, Math 1221, Phys 1042, 1046, architecture major)
Theories, methods of analysis, and design of architectural structures within the context of modern engineering. Fundamentals of structural behavior. Limitations and properties of structural elements and systems and their architectural applications.

- 5064. BAROQUE ARCHITECTURE IN ITALY.** (4 cr; prereq 1021 or #, architecture major)
 Architecture and urban design in Italy, 1600-1750. Emphasis on major figures (Bernini, Borromini, Cortona, Guarini) and evolution of major cities (Rome, Turin).
- 5957. CLIMATE AND ARCHITECTURE.** (4 cr; prereq 3064, 3082 or #, architecture major)
 Climate as a context for architectural form and thought. Thermal comfort, synthesis, and energy in architectural design in relation to temperature, humidity, wind, and solar radiation.

ART HISTORY (ArtH)

- 3175. THE TOPOGRAPHY OF A MEDIEVAL CITY: CONSTANTINOPLE.** (4 cr, §5175, §Clas 3175, §Clas 5175)
 Study of Constantinople, world capitol and imperial residence for more than a millenium. Individual monuments and broader patterns of urban life and urbanistic development from circa A.D. 200 until the Turkish conquest of 1453.
- 3252. HISTORY OF EARLY CHRISTIAN REGIONS AND BYZANTINE ART.** (4 cr, §5252, §Clas 3252, §Clas 5252)
 Architecture, sculpture, and painting in the Eastern Christian regions from the founding to the fall of Constantinople in the 15th century. Emphasis on meaning and broader cultural context in which works of art were created.
- 3325. MICHELANGELO: HIS WORK IN ITS TIMES.** (4 cr)
 Integrated view of Michelangelo's sculpture, painting, and architecture within the context of his times. Use of relevant preparatory drawings in facsimile and contemporary texts in translation to understand the works' inception and character.
- 3484. THE ART OF PICASSO.** (4 cr)
 The works of Picasso. Attention on Blue, Rose, Cubist, Classical and later periods of Picasso's development against innovations in modern European art of the early 20th century.
- 3761. ANCIENT CHINESE ART AND ARCHAEOLOGY.** (4 cr, §Eas 3761)
 Introduction to the art and architecture of China through recent archaeology using the methods of art historical analysis and archaeology.
- 3960. TOPICS IN ART HISTORY.** (4 cr per qtr [12 cr max])
- 5175. THE TOPOGRAPHY OF A MEDIEVAL CITY: CONSTANTINOPLE.** (4 cr, §3175, §Clas 3175, §Clas 5175)
 For description, see 3175.
- 5252. HISTORY OF EARLY CHRISTIAN AND BYZANTINE ART.** (4 cr, §3252, §Clas 3252, §Clas 5252)
 For description, see 3252.

ARTS, STUDIO (ArtS)

- 3602. ADVANCED COMPUTER GRAPHICS AND ANIMATION.** (3 cr; prereq 1602 [through Extension only])
 Techniques, methods, and concepts introduced in ArtS 1602 are refined to produce a final project with superior graphics and animation. Stresses creative use of Amiga and other microcomputers.

3604. INTERDISCIPLINARY ELECTRONIC PROJECTS. (3 cr; prereq 3601 or 3602 or 3603 or #)

Examines alternative approaches to the creation of works using any combination of the electronic arts: video, computers, audio, projected light; possible interface with other art forms (theatre, dance, painting, sculpture). Stresses conceptual concerns and experimentation with ways of creating and manipulating images and sounds.

3615. VIDEO EDITING. (3 cr; prereq 1601 [through Extension only])

Develops technical and artistic skills used in video editing. Examines works from many genres for range of editing styles, strategies, and technology.

3655. VIDEO AS AN ART FORM. (3 cr)

Explores various video genres (including documentary, performance, installation, conceptual, and expressive) from a number of critical positions; examines the relationship of the genres to politics and the arts. Includes viewings and discussions of significant video work and readings from prominent video artists and critics.

5620. ADVANCED COMPUTER GRAPHICS AND ANIMATION. (3 cr; prereq 3602)

For description, see 3602.

5640. INTERDISCIPLINARY ELECTRONIC PROJECTS. (3 cr; prereq 3604)

For description, see 3604.

5680. SPECIAL PROJECTS IN THE MEDIA ARTS. (3 cr; prereq 3601, 3615, 3655, 3602 or 3603 or #)

Individually designed projects designed in consultation with the faculty.

ASTRONOMY (Ast)

5299H. SENIOR HONORS ASTROPHYSICS RESEARCH SEMINAR. (1 cr; prereq CLA or IT upper division honors student, #; 1 1/2 seminar hrs per wk)

BIOCHEMISTRY (BioC)

3001. ELEMENTARY BIOLOGICAL CHEMISTRY. (4 cr; prereq one qtr college chemistry)

Principles of chemistry important to biological systems. Organic, inorganic, and physical chemistry needed to understand biochemistry. Course is designed as an alternative prerequisite to BioC 3031, Survey of Biochemistry.

3031. SURVEY OF BIOCHEMISTRY. (4 cr; prereq two qtrs inorganic chemistry or 3001)

Structure, function, and nomenclature of biological molecules including proteins, carbohydrates, lipids, and nucleic acids. Mechanisms of enzyme and coenzyme reactions, metabolic pathways, nucleic acid functions, and protein synthesis.

CHEMISTRY (Chem)

5765. BIOINORGANIC CHEMISTRY. (4 cr; prereq 5732 or equiv, CLA or IT chemistry major or grad or #; 4 lect hrs per wk)

Role of metal ions in biology. Emphasizes structure, function, and spectroscopy of metalloproteins and their synthetic analogues.

CHICANO STUDIES (Chic)

- 5901. CHICANO STUDIES: THEORY AND METHODOLOGY.** (4 cr; prereq grad or sr with #)
Theory and methodology of Chicano Studies scholarship in social sciences and humanities.
- 5920. TOPICS IN CHICANO STUDIES.** (4 cr, prereq grad or sr with #)
Multidisciplinary themes in Chicano Studies. Topics range from quarter to quarter.

CLASSICAL CIVILIZATION (ClCv)

- 3711. CLASSICS OF LITERARY CRITICISM.** (4 cr, \$5711, \$Engl 3711, \$Engl 5711)
Principles of criticism as expressed and employed in major works by such writers as Plato, Aristotle, Horace, Longinus, Sidney, Dryden, Johnson, Hume, Coleridge, Eliot.
- 3980. DIRECTED INSTRUCTION.** (Cr ar; prereq #)
- 5711. CLASSICS OF LITERARY CRITICISM.** (4 cr, \$3711, \$Engl 3711, \$Engl 5711)
For description, see 3711.

CLASSICAL AND NEAR EASTERN STUDIES— CLASSICS (Clas)

- 1201. THE OLYMPIC GAMES.** (4 cr, \$3201, \$ClCv 3201)
Surveys the Olympic Games (776 B.C. to A.D. 338) and compares them with other ancient and modern athletic festivals. Slides illustrate sites and athletic events. Discusses victors and their trophies.
- 3001. GREEK, ROMAN LYRIC POETRY IN TRANSLATION.** (4 cr, \$5001; prereq two courses in English literature beyond Engl 1002 or in foreign literature or #)
Readings in translation from Greek Lyric poets; Catullus, Horace, minor Latin lyricists. Cultural patterns of the times; survival of such poetry in modern times.
- 3002. ANCIENT SATIRE.** (4 cr, \$5002; prereq two courses in English literature beyond Engl 1002 or in foreign literature or #)
Development of ancient satire. Readings in translation from Homer, Aesop, Archilochus, Aristophanes, Lucian. Introduction to the form of Roman satire, with readings from Lucilius, Horace, Perius, Petronius, Mantial, Juvenal. Survival of Roman satire in English literature.
- 3003. THE ANCIENT NOVEL AND ROMANCE.** (4 cr, \$5003; prereq two courses in English literature beyond Engl 1002 or in foreign literature or #)
Development of the ancient novel. Readings in translation from the ancient Greek novelists and from Apuleius and Petronius.
- 3065. ANCIENT LITERARY CRITICISM.** (4 cr, \$5065; prereq two courses in English literature beyond Engl 1002 or in foreign literature or #)
Aristotle's *Poetics*, Horace's *Ars Poetica*, and Longinus' *On the Sublime*; history of literary value judgments in antiquity; applications of principles of criticism to ancient writers; Alexandrianism; formation of concept of the classics.
- 3175. THE TOPOGRAPHY OF A MEDIVAL CITY: CONSTANTINOPLE.** (4 cr, \$5175, \$ArH 5175)
For description, see ArH 3175.

- 3201. THE OLYMPIC GAMES.** (4 cr, §1201, §ClCv 3201)
For description, see 1201.
- 3252. HISTORY OF EARLY CHRISTIAN AND BYZANTINE ART.** (4 cr, §5252, §ArH 3252, §ArH 5252)
For description, see ArtH 3252.
- 5003. THE ANCIENT NOVEL AND ROMANCE.** (4 cr, §3003; prereq two courses in English literature beyond Engl 1002 or in foreign literature or #)
For description, see 3003.
- 5065. ANCIENT LITERARY CRITICISM.** (4 cr, §3065; prereq two courses in English literature beyond Engl 1002 or in foreign literature or #)
For description, see 3065.
- 5175. THE TOPOGRAPHY OF A MEDIEVAL CITY: CONSTANTINOPLE.** (4 cr, §3175, §ArH 3175)
For description, see ArtH 3175.
- 5252. HISTORY OF EARLY CHRISTIAN AND BYZANTINE ART.** (4 cr, §3252, §ArH 3252, §ArH 5252)
For description, see ArtH 3252.

CLASSICAL AND NEAR EASTERN STUDIES— COPTIC (Copt)

- 5011-5012. ELEMENTARY COPTIC.** (4 cr per qtr; prereq knowledge of early language, preferably Greek)
5011: Introduction to Coptic grammar and vocabulary (Sahidic dialect). *5012:* Further instruction in grammar, introduction to other dialects; first readings of texts.
- 5300. READINGS IN COPTIC.** (4 cr; prereq 5012 or equiv)
Advanced reading in Coptic literatures, such as Nag Hammadi treatises, Hermetic writings, and Egyptian monastic texts. Authors vary from year to year.

CLASSICAL AND NEAR EASTERN STUDIES— HEBREW (Heb)

- 3970. DIRECTED STUDIES.** (1-5 cr; prereq #, Δ)

CLASSICAL AND NEAR EASTERN STUDIES— LATIN (Lat)

- 3104. LATIN PROSE.** (5 cr; prereq 3002 or 3052)
Latin Republican prose.
- 3440. ADVANCED UNDERGRADUATE LATIN: LATER LATIN AUTHORS.** (5 cr; prereq 3106 or four yrs high school Latin or Δ)
Reading course on Latin authors of Late Antiquity, the Middle Ages, and the Renaissance.

COMPUTER SCIENCE (CSci)

- 5205. PARALLEL COMPUTER ARCHITECTURE.** (4 cr; prereq 5201 or #, CLA or IT upper division computer science major or grad)
Parallel computer system analysis and design. Organizational dependence on computations performed. Primary components of parallel architectures (processors, control units, memories, interconnection networks). Implemented paradigms of pipelines and vector, array, and multi-processors.

EAST ASIAN STUDIES (EAS)

3300. TOPICS IN EAST ASIAN STUDIES. (4 cr)

3301-3302†. SENIOR PROJECT. (2-4 cr; prereq sr in East Asian studies)

3761. ANCIENT CHINESE ART AND ARCHAEOLOGY. (4 cr, §Arth 3761)

For description, see Arth 3761.

ENGLISH (Engl)

3008. TECHNIQUES OF LITERARY STUDY. (4 cr; prereq pre-English or English major only)

Analysis of various literary forms, with special emphasis on poetry. Use of argument, evidence, and documentation in literary papers; introduction to major developments in contemporary criticism.

3711. CLASSICS OF LITERARY CRITICISM. (4 cr, §5711, §CICv 3711, §CICv 5711)

For description, see CICv 3711.

3961. SENIOR PAPER. (1 cr; prereq sr English major, concurrent or previous regis in 3960 or 3960H or 3961-3962, major adviser permission)

Critical analysis or research or creative writing paper usually in conjunction with Engl 3960 or 3960H or 3931-3932.

5402. ADVANCED EDITING. (4 cr; prereq EngW 5401, #, Δ)

Workshop/seminar setting provides experience in editing long text and exposure to specific types of editing such as fiction, children's literature, translations, and indexing.

5431, 5432, 5433. AMERICAN POETRY. (4 cr)

5431: Beginnings to 1890. Typical authors: Poe, Whitman, Bryant, Dickinson.

5432: 1890-1940. Typical authors: Frost, Stevens, Pound, Moore, Hughes, Williams, Stein. *5433:* Since 1940. Typical authors: Lowell, Ginsberg, Plath,

Rich, Kaufmann, Baraka, Brooks.

ENGLISH—CREATIVE AND PROFESSIONAL WRITING (EngW)

3960. WRITING WORKSHOP FOR MAJORS. (4 cr; prereq jr or sr English major writing track, 8 cr EngW, major adviser permission)

Workshop for majors in the writing track, usually taken during the senior year. Topic specified in *Class Schedule*.

5130. TOPICS IN ADVANCED CREATIVE WRITING. (4 cr, prereq Δ)

Advanced workshop in various areas which do not fall under fiction, poetry, or nonfiction descriptions.

ENGLISH—COMPOSITION AND COMMUNICATION (Comp)

3033. WRITING FOR THE HEALTH SCIENCES. (4 cr; prereq 1011 or equiv)

Strategies and conventions for writing in the medical and health professions. Practice in constructing and communicating medical knowledge and learning about medical issues through typical formats tied to students' major fields.

3034. CRITICAL THINKING AND WRITING FOR MANAGEMENT. (4 cr; prereq 1011 or equiv)

Strategies and conventions for writing in management and related fields. Improvement of communication skills through incorporation of narrative, descriptive, analytical, and persuasive techniques into writing on current business topics, with an emphasis on critical reading, thinking, and writing.

FOREIGN STUDIES (FoSt)

3510. IES PROGRAM AT COURTAULD INSTITUTE, LONDON. (1-45 cr; prereq #)

Semester or academic year study of art history in London under auspices of Institute of European Studies and Courtauld Institute of Art. Mainly for art history majors. Year students take regular Courtauld courses; semester students take two Courtauld courses plus three electives at the IES London Center.

GEOGRAPHY (Geog)

3141. AFRICA. (4 cr, §Afro 3141)

For description, see Afro 3141.

3985. SENIOR PROJECT SEMINAR. (2 cr; prereq Comp 3014, geography major)

Introduction to the selection and design of a senior project.

5142. GEOGRAPHY OF EAST AFRICA. (4 cr, §Afro 5142)

For description, see Afro 5142.

5143. GEOGRAPHY OF WEST AFRICA. (4 cr, §Afro 5143)

For description, see Afro 5143.

5371. NORTH AMERICAN CITIES. (4 cr; prereq 1301 or 1501 or 1970 or 3973 or 3371 or 5001)

Emergence of towns and cities in North America; the urban economy and its location requirements; central place theory; comparisons of city systems in capitalist, socialist, and developing areas; land use inside urban areas, structure, and change.

5378. CITIES OF THE SOVIET UNION AND EAST EUROPE. (4 cr, §Russ 5378)

Structure of Soviet and East European urban systems. Land use management in cities. Socialist and Soviet urban planning theory and practice. Migration controls. City government, finance, services.

GEOLOGY AND GEOPHYSICS (Geo)

1011. VOLCANOES OF THE EARTH. (4 cr)

A nonmathematical introduction to volcanoes, their origin and distribution on earth through time; theory of plate tectonics; origin of magma and the earth's interior; products of volcanoes, types of eruptions, hazards, and impacts on climate, vegetation, and society.

GERMAN (Ger)

5621. GERMAN CINEMA FROM CALIGARI TO HITLER. (4 cr; prereq 3xxx film studies course or #; may be taken for credit toward a German major or minor by doing a portion of the reading in German)

German cinema from its beginning, through its "golden age" in the 1920s, until the end of the Weimar Republic in 1933. Includes expressionism and New Objectivity. Leading directors: Lang, Lubitsch, Murnau, Pabst, Rye, Wiene.

5622. NAZI AND POSTWAR GERMAN CINEMA. (4 cr; prereq 3xxx film studies course or #; may be taken for credit toward a German major or minor by doing a portion of the reading in German)

German cinema 1933-1962: Nazi cinema, including Riefenstahl, Harlan, Sirk; continuities (e.g., Harlan) and discontinuities (e.g., Staudte's work in East and West Germany) in postwar cinema.

- 5623. NEW GERMAN CINEMA.** (4 cr; prereq 3xxx film studies course or #; may be taken for credit toward a German major or minor by doing a portion of the reading in German)
West German cinema, 1962 to present: from early acclaim in the mid-1960s (Schlomdorff, Kluge) to the attainment of international stature by the mid-1970s (Herzog, Fassbinder, Wenders, von Trotta); feminist and avante garde films; the crisis of the 1980s.
- 5624. GDR CINEMA.** (4 cr; prereq 3xxx film studies course or #; may be taken for credit toward a German major or minor by doing a portion of the reading in German)
History of East German cinema, beginning with Staudte's work in the 1940s through "socialist realism" in the 1950s and the development of the more critical and sophisticated cinema of the 1970s and 1980s (Wolf, Beyer).
- 5630. TOPICS IN GERMAN CINEMA.** (4 cr, [8 cr max]; prereq 3xxx film studies course or #; may be taken for credit toward German major or minor by doing a portion of the reading in German)
Special topics in German cinema. Topic may focus on specific directors, formal or political characteristics, film production or reception, or other issues.

HISTORY (Hist)

- 1021,1022, 1023. INTRODUCTION TO WESTERN CIVILIZATION.** (5 cr per qtr, 1022 is §3101)
1021: Ancient Near East, Greece, Rome. *1022*: Medieval Europe from the end of Antiquity to the Renaissance. *1023*: Modern Europe from the Reformation to present.
- 3101. INTRODUCTION TO MEDIEVAL HISTORY.** (4 cr, §1022)
For description, see 1022.
- 3450. TOPICS IN SOUTHEAST ASIAN HISTORY.** (4 cr)
- 3709. REVOLUTIONS IN MODERN CENTRAL EUROPE.** (4 cr; prereq 1001, 1002, 1003 or 3001, 3002, 3003 or equiv)
Comparisons of types of revolutions in Central Europe during the modern era. Causes of and social groups most involved and affected in these revolutions.
- 3714. MEDIEVAL SPAIN, 400-1500.** (4 cr)
Political, economic, and social history of Spanish regions from late Roman times to 15th century. Geographical background. Interaction of Christian, Islamic, and Jewish cultures. Links with the Mediterranean and the Atlantic.
- 3725. THE WORLD CONFLICT: 1931-1945.** (4 cr)
Social, political, and economic origins of worldwide international conflict from the Great Depression to the end of World War I.
- 5620. TOPICS IN EARLY MODERN EUROPE.** (4 cr; prereq #)
- 5640. SELECTED TOPICS IN MEDIEVAL HISTORY.** (4 cr; prereq one yr of medieval history or equiv, reading knowledge of appropriate foreign language, #)
Topics in European and/or Mediterranean history from the fall of the Roman Empire through the end of the Middle Ages.
- 5890. TOPICS IN AMERICAN INDIAN SOCIAL HISTORY.** (4 cr per qtr [12 cr max]; prereq #)
Social history of American Indian groups across time and space. Focuses on historical demography, gender roles, interracial relationships, urbanization, and internal differences within Indian communities.

HUMANITIES (Hum)

1302. TEXT AND CONTEXT. (4 cr)

Case studies explaining ways social and political tensions find representation in specific terms of discourse.

1303. KNOWLEDGE, PERSUASION, POWER. (4 cr)

Ways certain bodies of discourse come to cohere, exercise persuasive power, and be regarded as authoritative, while others are marginalized, ignored, or denigrated.

INTERDEPARTMENTAL STUDIES (ID)

3170. HECUA OFF-CAMPUS STUDIES PROGRAM: METRO URBAN STUDIES TERM. (1-24 cr, prereq #)

Intensive off-campus spring semester (February-May) combining interdisciplinary field study, seminar work, and professional internship. Twin Cities is source of interpretive materials for exploring contemporary urban life, social issues, relationships between subcultures/lifestyles and ways of knowing.

3180. HECUA OFF-CAMPUS STUDIES PROGRAM: CITY ARTS. (1-24 cr, prereq #)

Intensive off-campus fall semester combining interdisciplinary field study, seminar work, and professional internship. Function of arts in urban society; organization of art worlds and design of cities as they relate to quality of urban life and other urban issues.

INTERNATIONAL RELATIONS (IntR)

5931. INTERNSHIP SEMINAR, MSID. (4 cr; prereq admission to MSID or #)

Focuses on intercultural living and learning, and undertaking research activities in selected developing nations to prepare for internships in overseas development agencies.

JEWISH STUDIES (JwSt)

3522. HISTORY OF THE ARAB-ISRAELI CONFLICT. (4 cr)

Examination of the background of Jewish history and persecution that led to the advent of Zionism and the idea of a Jewish state. Jewish-Arab relations during the British Mandate over Palestine, Israeli statehood, and the Palestine diaspora.

JOURNALISM AND MASS COMMUNICATION (Jour)

1003H. PRODUCING MASS MEDIA MESSAGES. (4 cr; prereq 1001, fr comp exemption, honors division regis, pre-journalism professional or pre-mass communication status, #, Δ)

5827. THE PRESS IN EASTERN EUROPE. (4 cr; prereq #, Δ)

Operation and functions of the press in East-Central European communist states and how Marxist press theories are applied. Examines the development and evolution of the press as well as of underground and opposition media.

LEARNING AND ACADEMIC SKILLS (LASK)

1301. CAREER PLANNING FOR DISABLED STUDENTS. (2 cr [not for CLA degree credit])

Assessment of disabled student interests, values, personality, skills, and abilities; vocational exploration; job analysis; decision making; computerized career exploration.

1302. JOB SEEKING SKILLS FOR DISABLED STUDENTS. (2 cr [not for CLA degree credit]; prereq 1301 or equiv)

Job search strategies, interviewing, resume writing, cover letters, self-advocacy, and networking for disabled students.

1303. INTERNSHIP EXPERIENCE FOR DISABLED STUDENTS. (2 cr [not for CLA degree credit]; prereq 1302 or equiv)

MATHEMATICS (Math)

3007H-3008H. THE WORLD OF MATHEMATICS. (1 cr per qtr; prereq grade of at least B in Math 3411 or 3511, #; grade of B or better required to continue in sequence)

Mathematics as a subject of creative thought and the theoretical base of the scientific enterprise. Topics in pure and applied mathematics and history. A preview of upper division math courses.

MEDIEVAL STUDIES (MeSt)

1001. THE MIDDLE AGES: AN INTRODUCTION TO MEDIEVAL STUDIES. (4 cr, §Engl 1020)

Introduction to the history, culture, art, literature, and architecture of the Middle Ages and to interdisciplinary methods of study.

3610. TOPICS IN MEDIEVAL STUDIES. (4 cr)

Topics specified in the *Class Schedule*.

MICROBIOLOGY (MicB)

5125. RECOMBINANT DNA LABORATORY. (4 cr, §Biol 5125; prereq application necessary, Δ)

Introduction to basic recombinant DNA techniques. Methods for growing, isolating, and purifying recombinant DNAs and cloning vectors.

MUSIC (Mus)

1002. FUNDAMENTALS OF MUSIC II. (4 cr; prereq 1001)

Procedures for harmonizing melodies, such as chord construction and succession, voice leading, and stylistic considerations. Development of basic listening, singing, and keyboard facility. Rigorous review of music fundamentals.

PHILOSOPHY (Phil)

5622. PHILOSOPHY AND FEMINIST THEORY. (4 cr; prereq 8 cr in philosophy or women's studies or #)

Examines encounters between philosophy and feminism, such as gender's influence in traditional philosophical problems and methods, and the social role of the theorist and of theorizing as they relate to the politics of feminism.

PHYSICS (Phys)

1911-1912. LABORATORY-BASED PHYSICS FOR TEACHERS. (4 cr, [0 cr for IT students], 6 lab hrs per wk)

A laboratory-based introductory physics course designed to meet the needs of students intending to be elementary education majors. Topics include the earth's motion, properties of matter, heat and temperature, kinematics, and electric current.

5401H. SENIOR HONORS SEMINAR. (1 cr per qtr [3 cr max]; prereq CLA or IT upper division physics honors student, #; 1 1/2 seminar hrs per wk)

PLANT BIOLOGY (PBio)

5221. PLANT MOLECULAR EVOLUTION. (3 cr; prereq GCB 3022 or Biol 5003 or GCB 5022)

Applications of molecular genetics to the study of processes and products of evolution. Specific topics include phylogenetic reconstruction, chromosomal evolution, multigene families, molecular aspects of morphological change, role of transposons in evolution, DNA sequence evolution, and measures of genetic diversity.

RELIGIOUS STUDIES (RelS)

3072. THE NEW TESTAMENT. (4 cr, §5072, §Clas 3072, §Clas 5072)

First-century Israel under Roman rule. Jesus of Nazareth. Earliest Christian communities. Mission to Gentiles. Paul the Apostle. Beginnings of the New Testament.

3100. JUDAISM IN THE TIME OF EARLY CHRISTIANITY. (4 cr, §JwSt 3100)
History, religion, and literature of Judaism in Palestine, the Roman world, and Parthian and Sassanian Babylonia in the 2nd through 7th centuries. Methods for reconstructing the history of a religion from primary sources and evidence.

3251. THE MODERN STUDY OF THE OLD TESTAMENT. (4 cr, §ANE 3251)
Methods employed in the study of the Old Testament, including textual criticism, the anthropological approach, form criticism, the sociological approach, the history of religion, and the uses of archaeology in interpreting the text.

3501. ANCIENT ISRAEL. (4 cr, §ANE 3501)
History of Israel and development of its religion from earliest times through the intertestamental period. The foundation of the Hebrew people; patriarchal period; development of Israelite religious and legal institutions; conquest of Canaan; development of the monarchy and the united kingdom.

3502. ANCIENT ISRAEL. (4 cr, §ANE 3502)
History of Israel and development of its religion from earliest times through the intertestamental period. The divided kingdom; classical prophecy, destruction, exile, and restoration.

3900. TOPICS IN JEWISH STUDIES. (4 cr per qtr, §JwSt 5900)
Historical, religious, sociological, anthropological, and humanistic study of Judaism and the Jewish people. Approach and method of study varies with topic.

5072. THE NEW TESTAMENT. (4 cr, §3072, §Clas 3072, §Clas 5072)
For description, see 3072.

5101. RELIGION AND AMERICAN CULTURE. (4 cr, §AmSt 5101)
Not a survey, but a representative profile of past and present religion in America, organized around a theme or problem.

RUSSIAN AND EAST EUROPEAN STUDIES— RUSSIAN (Russ)

- 5378. CITIES OF THE SOVIET UNION AND EAST EUROPE.** (4 cr, §Geog 5378)
For description, see Geog 5378.

RUSSIAN AND EAST EUROPEAN STUDIES— SOVIET CENTRAL ASIAN STUDIES (SCAS)

- 3601. FICTION: IRAN AND SOVIET CENTRAL ASIA.** (4 cr, §5601, §MidE 3601, §MidE 5601)
Social, political, and religious thought of Iranian and Soviet Central Asian writers of fiction since beginning of the 20th century, with emphasis on the themes of tradition, modernization, women's rights, and secularization.
- 5311. MEDIEVAL SAGES: IRAN AND SOVIET CENTRAL ASIA.** (4 cr, §MidE 5311; prereq background in Iranian, Central Asian, or Islamic studies)
Study and discussion of the intellectual life of the region from the rise of the Ghaznavids (A.D. 1000) to the fall of the Timurids (A.D. 1500).
- 5601. FICTION: IRAN AND SOVIET CENTRAL ASIA.** (4 cr, §3601, §MidE 3601, §MidE 5601)
For description, see 3601.

SOUTH AND SOUTHWEST ASIAN STUDIES— SOUTH ASIAN LANGUAGES AND LITERATURE (SALL)

- 5970. SOUTH ASIAN LANGUAGES AND LITERATURE.** (Cr ar; prereq #)
Topics in South Asian languages and literature, including Marathi, Hindi, Sanscrit, Urdu.
- 5990. SOUTH ASIAN LANGUAGES AND LITERATURE.** (Cr ar; prereq #)
Directed research.

SOUTH AND SOUTHWEST ASIAN STUDIES— SOUTH ASIAN STUDIES (SoAS)

- 3202. MODERN INDIAN LITERATURE IN TRANSLATION.** (4 cr)
Literary achievements of the Indian civilization from the modern period.
- 3950. TOPICS IN SOUTH AND SOUTHWEST ASIAN STUDIES.** (1-4 cr per qtr [12 cr max])

SOUTH AND SOUTHWEST ASIAN STUDIES— MIDDLE EASTERN (MidE)

- 3601. FICTION: IRAN AND SOVIET CENTRAL ASIA.** (4 cr, §5601, §SCAS 3601, §SCAS 5601)
For description, see SCAS 3601.
- 5311. MEDIEVAL SAGES: IRAN AND SOVIET CENTRAL ASIA.** (4 cr, §SCAS 5311; prereq background in Iranian, Central Asian, or Islamic studies)
For description, see SCAS 5311.
- 5601. FICTION: IRAN AND SOVIET CENTRAL ASIA.** (4 cr, §3601, §SCAS 3601, §SCAS 5601)
For description, see SCAS 3601.

SPANISH AND PORTUGUESE—PORTUGUESE (Port)

3104. THE ART OF READING LUSO-BRAZILIAN LITERARY TEXTS. (4 cr; prereq 3014)

Introduction to the critical reading and interpretation of literary texts in Portuguese to provide analytical strategies for the study of various fictional forms.

SPANISH AND PORTUGUESE—SPANISH (Span)

3254. LATIN AMERICAN WRITING: BUILDING THE NATION. (4 cr; prereq 3104)

Analyzes writing uses by the liberal bourgeoisie in 19th-century Spanish America to promote its nation-building project. Examines major works of the period.

3255. VANGUARD, SOCIETY, AND WRITING IN LATIN AMERICA. (4 cr; prereq 3104)

Lyric and narrative trends in 20th-century Latin America. Latin America and the decline of the West. Challenge to modernization and the internationalization of discourse. Defiance to the discourse of power in the 1970s and 1980s.

3256. SPANISH AMERICA CULTURAL DISCOURSE. (4 cr; prereq 3104)

Cultural assumptions in current modes of interpreting Spanish American reality. Representative texts analyzed.

3702. THE STRUCTURE OF SPANISH AND PORTUGUESE: MORPHOLOGY AND SYNTAX. (4 cr; prereq 3701 or #)

Introduction to the morphology and syntax of modern Spanish and Portuguese. Survey of derivational and inflection morphology; typical syntactic constructions.

5534. NATIONAL LITERATURES OF SPANISH AMERICA. (4 cr; prereq three 3xxx or 5xxx courses in Spanish or Portuguese or Δ)

Review of a national literature of a Spanish-American country. Literary movements and figures, important genres; conceptualization of a national identity; literary history as a socioeconomic project; canon formation and challenge.

5535. HISPANIC AMERICAN LITERARY HISTORY: AN OVERVIEW. (4 cr; prereq three 3xxx or 5xxx literature courses in Spanish or Portuguese or Δ)

Purview of Hispanic American literature from colonial times to the present. Major cultural/historical divisions analyzed and characterized.

SPEECH-COMMUNICATION (Spch)

5234. BROADCASTING IN EASTERN EUROPE AND THE USSR. (4 cr, \$5231; 3211 recommended)

History, administrative and regulatory structures, programming policies, and impact on society or internal and external broadcast services in Eastern Europe and the Soviet Union.

THEATRE ARTS AND DANCE—DANCE (Dnce)

1070. BEGINNING JAZZ I. (1 cr per qtr [6 cr max]; prereq 1007 or equiv)

Basic jazz technique and stylistic range of jazz dance and its origins.

1077. TAP I. (1 cr)

The basis of tap; fundamental syncopation and various rhythms.

1078. TAP II. (1 cr; prereq 1077)

For description, see 1077.

1079. TAP III. (1 cr; prereq 1078)

For description, see 1077.

- 1080. BEGINNING JAZZ II.** (1 cr per qtr [6 cr max]; prereq 1070 or equiv)
For description, see 1070.
- 1090. BEGINNING JAZZ III.** (1 cr per qtr [6 cr max]; prereq 1080 or equiv)
For description, see 1070.
- 1111. BODY MECHANICS FOR DANCERS.** (4 cr, \$3333)
Prevention, evaluation, and rehabilitation of dance/movement injuries. Includes lectures, discussions and assignments on dance medicine, dance injury, body therapies, and an alignment workshop.
- 3080. INTERMEDIATE JAZZ II.** (1 cr per qtr [3 cr max]; prereq 3070 or equiv)
Intermediate level jazz technique and stylistic range of jazz dance and its origins.
- 3090. INTERMEDIATE JAZZ III.** (1 cr per qtr [3 cr max]; prereq 3080 or equiv)
For description, see 3080.
- 3333. BODY MECHANICS FOR DANCERS.** (4 cr, \$1111)
For description, see 1111.
- 5550. TOPICS IN DANCE THEORY.** (1 cr per qtr [3 cr max]; prereq 1040, #)
Topics specified in the *Class Schedule*.

THEATER ARTS AND DANCE—THEATER ARTS (Th)

- 3701. INTRODUCTION TO DIRECTING.** (4 cr; prereq 1321, jr or sr)
A creative approach to basic stage direction techniques with stress on elementary script analysis, rehearsal techniques, improvisation, blocking, and movement.
- 5711. STAGE DIRECTION.** (4 cr; prereq 3711 or grad)
Theory of direction: concept and analysis. Exercises in blocking scene analysis and productions of short scenes.
- 5712. STAGE DIRECTION.** (4 cr; prereq 5711)
Examination of dramatic forms. Theory of rehearsal and production problems and direction of two one-act plays.

WOMEN'S STUDIES (WoSt)

- 3404. LESBIAN CULTURE.** (4 cr; prereq 8 cr of women's studies courses)
Theoretical and historical readings with literature, music, and art. Emphasis on cultural contexts within which lesbian culture exists.
- 5106. THE CULTURAL CONSTRUCTION OF SEX, GENDER, AND SEXUALITY.** (4 cr)
Investigates Euro-American concepts of sex, gender, and sexuality in representative texts and images from the 17th century to the present. Critical and source materials from literary and cultural studies, history, biology, anthropology, psychology, and sociology.
- 5203. WOMEN, FEMINISM, AND POWER.** (4 cr; prereq 12 cr in women's studies courses or #)
Exploration and development of feminist conceptualizations of power, including personal power, empowerment, spirituality, networking, civil disobedience, holism, and utopias.
- 5305. WOMEN AND REPRESENTATION IN 19TH-CENTURY EUROPE.** (4 cr; prereq 12 cr in literature or feminist theory or #)
Ways gender is represented in various cultural discourses, including fiction, drama, poetry, painting, music, medicine, and science in 19th-century Europe.

CHANGES IN MAJORS

B.A. MAJOR SEQUENCE—BIOMETRY

Required Preparatory Courses—Same as in the *CLA Bulletin*

Major Requirements—5420, 5450, 5442, 5454; Math 3211, 3142 (or 3221); CSci 3101 (or 3102); at least 10 credits chosen from 5459, 5460-5461-5462; Stat 5121-5122 (or 5131-5132-5133), 5301, 5302. Other choices possible with advance approval of the director of undergraduate studies.

B.A. MAJOR SEQUENCE—ENGLISH

Major Requirements—Twelve 4-cr courses in English, English Writing, or Composition (beyond those taken to satisfy the current CLA composition requirement) and Engl 3961 (1 cr); 11 courses at the 3xxx or 5xxx level, at least three at 5xxx level. (Three courses may be graded S.) Beyond the common requirements to be taken by all majors, there are four concentrations, each with specific requirements. For more information about each concentration, inquire in 224 Lind Hall.

Upon admission, a student's overall GPA in English must be 2.50.

Independent Study credits are limited to 12 and no more than 4 extension independent study credits may be at the 3xxx or 5xxx level.

Common requirements: 3008; one course in Shakespeare (3241-3242-3243); major paper through Engl 3961 (1 cr) registration, written in conjunction with 3960 or 3960H or 3931-3932, according to guidelines in English Major Handbook.

Requirements for concentrations:

General Literary Studies—Two other 3xxx courses in British literature before 1900.

One 3xxx or 5xxx course in British or American literature after 1900.

One 3xxx or 5xxx course in the study of language or literary theory.

Engl 3960/3960H Junior-Senior Seminar or 3931-3932 English Quarter.

Engl 3961 (1 cr) Senior Paper or Engl 3963H (4 cr) Honors Thesis for summa cum laude candidates.

Five electives, four of which must be at least 3xxx level.

Students will complete three 5xxx-level courses.

Students are strongly encouraged to take a course in literature of American minorities as one of their electives.

Writing—One other 3xxx or 5xxx course in British literature before 1800.

One 3xxx or 5xxx course in American or British literature after 1800.

One 3xxx or 5xxx course in the study of language or literary theory.

One 1xxx-level creative writing course.

One 3xxx-level creative writing course.

Engl 3960/3960H Junior-Senior Seminar or English Writing 3960 Writing Workshop for Majors or Engl 3931-3932 English Quarter or 3970.

Engl 3961 (1 cr) Senior Paper or Engl 3963H (4 cr) Honors Thesis for summa cum laude candidates.

Four electives, three of which must be at least 3xxx level.

Students will complete three 5xxx-level courses.

Students are strongly encouraged to take a course in literature of American minorities as one of their electives. They are also encouraged to take at least one genre course and one course in techniques of writing.

Pre-Secondary Education—Two 3xxx or 5xxx courses in British literature before 1900.

Two 3xxx or 5xxx courses in American literature. Students are strongly encouraged to take Minority American Literature as one of these courses.

Two 3xxx or 5xxx courses in the study of the English language.

One 3xxx-level course in Composition in addition to the CLA requirement.

Engl 3960/3960H Junior-Senior Seminar or 3931-3932 English Quarter.

Engl 3961 (1 cr) Senior Paper or Engl 3963H (4 cr) Honors Thesis for summa cum laude candidates.

Two 3xxx or 5xxx electives.

Students will complete three 5xxx-level courses.

Recommended nonmajor electives: Continental, Classic and/or Western literature; Speech 3411 or 5411.

Graduate/Pre-Professional— 3004

Two "age" courses in British literature before 1900: 3115, 3116, 3117, 3118, or 3119.

Chaucer (5221) or Milton (5261).

One 3xxx or 5xxx-level course in American literature.

One course in the study of the English language.

One course in literary theory.

Engl 3960/3960H Junior-Senior Seminar or 3931-3932 English Quarter.

Engl 3961 (1 cr) Senior Paper or Engl 3963H (4 cr) Honors Thesis for summa cum laude candidates.

Two 3xxx or 5xxx-level electives.

Students will complete three 5xxx-level courses.

Students are strongly encouraged to take a course in literature of American minorities as one of their electives. They are also encouraged to take a second Shakespeare course and *The Bible* as Literature.

The Senior Project may be written in conjunction with a Junior-Senior Seminar, an English Quarter, or as an independent study project under the supervision of a faculty member.

Honors students in this plan must complete the four honors opportunities required by the CLA Honors Program. Students writing a *summa* thesis will register for Engl 3963H as their Senior Project.

B.A. MAJOR SEQUENCE—FRENCH

Required Preparatory Courses—Same as in the *CLA Bulletin*

Major Requirements—3016, 3017 or 3020, 3101, 3103; two courses selected from 3511, 3512, 3513, 3550; five additional 3xxx-5xxx courses, four of which must be chosen from the following: 3207-3299, 3701, 5207-5900

Courses 3590, 3599, 3601, 3602, 3603, 3607, 3650, and 5607 may not be applied toward the French major.

D grades in major courses will be accepted if offset by an equivalent number of A or B grades in major courses.

B.A. MAJOR SEQUENCE—FRENCH AREA STUDIES

Required Preparatory Courses—Same as in the *CLA Bulletin*

Major Requirements—3016, 3101, 3103; three courses selected from 3511, 3512, 3513, 3550; one course selected from Anth 5141, 5161, 5331

Hum 3321, 5301, 5302

Four courses selected from one of the following two areas:

Two courses from Fren 3209, 3219, 3239, 3299, and appropriate 5xxx-level course and two courses from ArtH 3009, 3011, 3303, Hist 3011, 3616, 3624, 5211, Mus 3029, Phil 3001, 3002, 5021, or

Two courses from Fren 3107, 3259, 3269, 3289, 3299 and appropriate 5xxx-level course and two courses from Afro 3421, 5301, ArtH 3012, 3465, 3466, Hist 3012, 3013, 3625, 5212, 5231, Hum 3755, 3871, Phil 3004

Senior seminar: French-Italian 5505

B.A. MAJOR SEQUENCE—GERMAN

Please note that courses taught in translation, except 3064 and other film courses, do not count toward major.

B.A. MAJOR SEQUENCE—GERMAN STUDIES

Required Preparatory Courses—Same as in the *CLA Bulletin*

Major Requirements—At least four courses from 3011, 3012, 3013, 3014, 3015, 3016, 3021, 5011, 5016

At least four courses from 3501, 3502, 3511, 3512, 3513, 3590, 5331, 5510

One 3xxx or 5xxx elective German course

Three courses in art history, economics, geography, history, Western European area studies, international relations, humanities, music or political science that concentrate on German-speaking or central European areas

Courses taught in translation, except 3604 and other film courses, do not count toward the major.

CHANGES IN MINORS

MINOR SEQUENCE—ENGLISH

Required Preparatory Course—3008

Minor Requirements—Same as in the *CLA Bulletin*

MINOR SEQUENCE—FRENCH

Required Preparatory Courses—Same as in the *CLA Bulletin*

Minor Requirements—Minimum of six courses:

1. Fren 3016, 3017 or 3020
2. Two courses from 3511, 3512, 3513, 3550
3. 3101, 3103

MINOR SEQUENCE—INTERNATIONAL RELATIONS

The minor sequence has been dropped.

MINOR SEQUENCE—LINGUISTICS

Required Preparatory Courses—None

Minor Requirements—3001, 5002, and two additional 3xxx or 5xxx linguistics courses (Option 1); or 3001, 3301, 5201, 5302 (Option 2).

BULLETIN CHANGES

B.I.S. SECOND LANGUAGE REQUIREMENTS

For students entering CLA fall 1988 and thereafter, the second language requirement (and the group A requirement) for the B.I.S. is the same as for the B.A.

For students who entered CLA in 1986-87 and 1987-88, the graduation requirement for the B.I.S. is to demonstrate second language proficiency at the level of the college's entrance standard applying to the student. This proficiency standard must be met regardless of whether the student meets the CLA group requirement by earning credit in three second language courses or three group A courses.

—Students who entered CLA in 1986-87 with fewer than 39 credits must demonstrate proficiency at the one-quarter level.

—Students who entered CLA in 1987-88 with fewer than 39 credits must demonstrate proficiency at the two-quarter level.

—Students who entered CLA with 39 credits or more in either 1986-87 or 1987-88 are governed by the same requirement as students who entered CLA prior to fall 1986.

Students who entered CLA prior to fall 1986 are required to take either 12-15 credits of a single second language (ancient or modern) or 12-15 credits in Group A, with at least one course dealing with a formal language or symbolic system.

—Students who have been exempted from the B.A. second language requirement on the basis of a proficiency examination or high school second language study are not exempt from the B.I.S. degree requirement. Such students must take either three second language courses at an advanced level or three Group A courses.

—Students whose B.I.S. programs include an international area of concentration must earn 12-15 credits in a second language.

CANCEL-ADDING LIMITS, see CLA Bulletin, p. 21

Please note that course entry after the first week requires written permission from the instructor, and after the first two weeks from the instructor and the Student Scholastic Standing Committee.

CONTINUING EDUCATION AND EXTENSION

To have extension courses entered on your day school transcript, you *may* (not must) make a special request in 150 Williamson Hall.

COURSE DESIGNATORS ADDED

The following new course designators have been added to the Course Data Base for use beginning fall 1989: Copt (Coptic) and SALL (South Asian Languages and Literature).

CREDIT REQUIREMENTS, see CLA Bulletin, top of p. 11

Credits earned by examination and credits for courses not listed in the 1988-90 *CLA Bulletin* (non-CLA courses) may not be applied toward the required 45 CLA credits. A maximum of 28 approved non-CLA credits, however, may be applied toward the overall credit requirements (except for the B.I.S., which permits 40 such credits if approved by the B.I.S. adviser).

[NOTE: The 1988-90 *CLA Bulletin* incorrectly states that a maximum of 16 (not 28) non-CLA credits may be applied toward the overall credit requirements.]

FINAL EXAMS, see CLA Bulletin, p. 29

You are required to take final examinations at the scheduled times (see *Class Schedule*). Under certain circumstances, however, you may request final exam schedule adjustment of your instructor.

FINANCIAL AID AND COURSE CANCELLATION, see CLA Bulletin, p. 22

If you cancel your entire registration during a quarter, or cancel a course or courses causing your registration to fall below the level for which you are receiving financial aid (12 credits for full-time student status), you *may* be required to repay the Office of Student Financial Aid.

[NOTE: The 1988-90 *CLA Bulletin* incorrectly states that you will (not may) be required to repay the financial aid office.]

"INCOMPLETE" GRADES FOR S/N CLASSES, see CLA Bulletin, p. 28

Please note that beginning fall quarter 1988, a student who receives an incomplete (I) grade for an S/N course will have one quarter to complete the work and receive an S/N grade. If the work is not made up within one quarter, the I will automatically lapse to an N grade. A summer session I will lapse to an N after the fifth week of winter quarter. All of the above assumes continuous fall/winter/spring enrollment. If an I has lapsed to an N (or an F, if registered under the A-F grading system), instructors may, at their discretion, resubmit an I or evaluate completed coursework and submit a grade.

Note: Incompletes lapse only if students register at least one more quarter following receipt of an I; the grade remains I if students do not return.

MATHEMATICS, see CLA Bulletin, p. 188

Please note that credit is not given for Math 1211 if Math 1142 previously has been taken for credit. Credit for Math 1241 is not given if Math 3142, 3211, 3221, or 3511 has been taken for credit previously. Credit for Math 3142 is not given if Math 1241 has been taken for credit previously.

Also note all 14xx and 34xx courses are honors courses.

PROBATION, SUSPENSION, AND READMISSION, see CLA Bulletin, p. 30

Scholastic Probation—The college determines your scholastic standing by evaluating whether you are making satisfactory progress toward your degree, rather than by your grade point average. In order to remain in good scholastic standing, you must complete with grades of A, B, C, or S at least 75 percent of the credits you attempt each academic year (summer session I through spring quarter). The formula for determining this percentage of successfully completed credits is:

$$\frac{\text{Credits graded A, B, C, S}}{\text{Credits graded A, B, C, S, D, F, N, I}} = \text{percentage of successful completion (min. 75\%)}$$

(Marks of W, V, and X are *not* included in this calculation.)

If your percentage of successful completion is less than 75 percent, but at least 50 percent, you will be put on scholastic probation—the signal your academic progress has not

been satisfactory—along with an invitation to seek your adviser's help to resolve academic problems. The college attempts to notify students who fall below its minimum scholastic standards, but it is your responsibility to monitor your academic progress and to inquire at your college office if you have questions regarding your scholastic standing.

If a heavy load of outside work, campus activity, or other distraction interferes with your academic achievement, you are expected to make immediate adjustments and seek whatever assistance is indicated.

You will be taken off probation when your academic work has improved enough to promise continuous progress toward the degree.

Suspension from CLA—Accumulation of substandard work will usually jeopardize your likelihood of graduating from CLA or of transferring to another institution. Since continuance in the college in this circumstance is not likely to serve a useful purpose, you will be suspended from CLA in the following situations:

1. If you fail to earn successful grades in at least 50 percent of your credits for an academic year, you will be suspended from the college immediately.

2. If you are placed on scholastic probation and do not meet the terms of your probation, you will be suspended from the college.

The Committee on Student Scholastic Standing decides whether to suspend a student based on all the evidence. Written appeals may be submitted by students who think additional information presented to the committee may modify the decision. Suspensions are usually rescinded only when the committee is convinced that changes in the student's academic performance are probable.

Readmission to the College—If you are suspended from the college, you may return only upon approval of the Committee on Student Scholastic Standing. Dependable assurance that the factors that led to the suspension have been corrected, together with convincing prospects that improved work will follow, must be advanced to obtain approval. Readmitted students are usually placed on probation and may be subject to immediate suspension if work becomes unsatisfactory.

Requests for readmission are normally considered only after an interval of at least one year.

REGISTRATION CHANGE

For fall classes, registration periods ordinarily begin in mid-May (not late May as incorrectly noted in 1988-90 *CLA Bulletin*).

REPEATING COURSES, see CLA Bulletin, p. 20

Please note that when one repeats a course in which an F or a D grade was received, both grades earned appear on the official transcript and both grades are computed into the GPA, though graduation credit is awarded for only one course.

SPECIAL EXAMINATIONS FOR CREDIT, see CLA Bulletin, p. 26

If you believe your knowledge of a subject is comparable to the material covered in a particular course, you may request to take an examination for credit. Follow these steps:

1. Obtain a Request for Special Examination form from a Scholastic Committee Representative in your college office.

2. Take this form to the appropriate department which will recommend whether an exam should be allowed.

3. If approved, make arrangements with the instructor to take the exam. Usually no grade is assigned.

“V REGISTRATION, see CLA Bulletin, p. 28

Please note that students may not repeat for credit a course that they have audited (i.e., registered for as a visitor or auditor).

WITHDRAWAL FROM A COURSE, see CLA Bulletin, p. 28

Official withdrawal from a course after the second week of classes is recorded on your transcript. A course cancellation filed before the sixth week of classes ensures that a W, rather than an F, is formally entered on your record. Cancellations made before the end of the second week of classes are not noted on your transcript.

**CHANGES IN GROUP DISTRIBUTION
REQUIREMENTS**

**GROUP A—LANGUAGE, LOGIC, MATHEMATICS, AND THE
STUDY OF ARGUMENT**

Ger, add 3704, 3705
Span, add 3702

GROUP B—THE PHYSICAL AND BIOLOGICAL UNIVERSE

Anth, add 3005, 3006
BioC, delete 1301, 1302
Geo, add 1011

GROUP C—THE INDIVIDUAL AND SOCIETY

C-1, INDIVIDUAL AND INSTITUTIONAL BEHAVIOR

Clas, add 1201/3201
CLit, add 3979
Hum, add 1302
ID, add 3170, 3180

C-2, THE HISTORICAL PERSPECTIVE

ArtH, add 3175, 3252
Clas, add 3175, 3252
EAS, add 3201, 3202
Hist, add 1021, 1022, 1023, 3101, 3424, 3709, 3714
Jpn, delete 3162
RelS, add 3501, 3502
WoSt, delete 3307

C-3, SOCIAL AND PHILOSOPHICAL ANALYSIS

Clas, add 3072
Hum, add 1303
JwSt, add 3522
MidE, add 3601
SCAS, add 3601
SoAS, add 3413

GROUP D—LITERARY AND ARTISTIC EXPRESSION

Afro, add 3591, 3592
ArtH, add 3325, 3484, 3761, 3909
ArtS, add 1602 (by extension only), 3655
CICv, add 3711
Clas, add 3001, 3002, 3003, 3065, 3081, 3083
EAS, add 3761
Engl, add 3001, 3008, 3009, 3111, 3112, 3113, 3115, 3116, 3117, 3118, 3119, 3121, 3218, 3241, 3242, 3251, 3252, 3355, 3356, 3357, 3411, 3412, 3413, 3591, 3592, 3621, 3631, 3651, 3671, 3711
Ger, add 3104, 3105, 3106
Lat, add 3440, 3445
Mus, delete 1511
Port, add 3104
RelS, add 3201, 3251
Scan, add 3601
Span, add 3614
WoSt, add 3307

CHANGES IN WORLD STUDIES REQUIREMENTS

Afro, add 3421, 3601, 5142, 5341, 5876
ArtH, add 3761, 3909
Chn, add 3063
EAS, add 3201, 3202, 3281, 3013, 3761
Hist, delete 5021, 5022; add 3450
JwSt, add 3034
SoAS, add 1504, 3412, 3413

CHANGES IN CULTURAL PLURALISM REQUIREMENTS

AmSt, add 3701, 3702
CLit, add 3979
ID, delete 3979
Mus, add 3708

CHANGES IN ROUTE II COURSE LIST

HEBREW

RelS, add 3100, 3251, 3501, 3502

SWAHILI

Afro, add 3141, 5142, 5143

NUMBER CHANGES

The table below records changes from "old" (1988-90 *CLA Bulletin*) to new numbers. Students should not register for courses under the new numbers if they have received credit for equivalents under old numbers.

	OLD NUMBER	NEW NUMBER
Afro	3876	5876
Afro	5852	5851
Afro	5853	5852
Afro	5856	5853
ArtS	3601H	3411H
ArtS	3602H	3412H
ArtS	3603H	3413H
ArtS	3604H	3414H
ArtS	3605H	3415H
ArtS	3606H	3416H
Dnce	1020-1030-1040	1010-1020-1030
	1050-1060-1070	1040-1050-1060
	3110-3120-3130	3010-3020-3030
	3140-3150-3160	3040-3050-3060
	5110-5120-5130	5010-5020-5030
	1012-1013-1014	1001-1002-1003
	1015-1016-1017	1004-1005-1006
	1026-1027	1007-1008
	3636	3070
	1420-1320	1420-3420
FoSt	5235	5420
Lat	1410-1420-1430	3410-3420-3430
Mus	3550	3551-3552-3553

RUBRIC CHANGES

The table below records changes from "old" (1988-90 *CLA Bulletin*) to new course designators. Students should not register for courses under the new rubrics if they have received credit for equivalents under old designators.

	OLD RUBRIC	NEW RUBRIC
1009	Bot	PBio
1012	Bot	PBio
3109	Bot	PBio
3131	Bot	PBio
3201	Bot	PBio
5001	Bot	PBio
5103	Bot	PBio
5105	Bot	PBio
5111	Bot	PBio
5131	Bot	PBio
5132	Bot	PBio
5141	Bot	PBio
5182-5183-5184	Bot	PBio
5205	Bot	PBio
5211-5212	Bot	PBio
5231	Bot	PBio
5235	Bot	PBio
5801	Bot	PBio
5805	Bot	PBio
5811	Bot	PBio
5815	Bot	PBio
5821	Bot	PBio
5825	Bot	PBio
5890	Bot	PBio
5960	Bot	PBio
5970	Bot	PBio
5990	Bot	PBio
5504H	Russ	Slav
5970	SALL	Mar