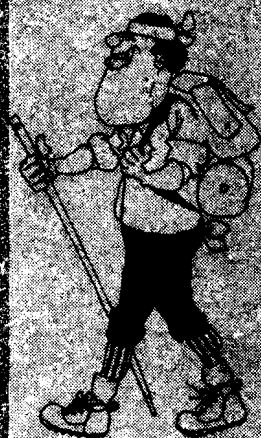


Outdoor
Adventures



The
Insight of
Experts



Personal
Interests
and Talents



Art,
Drama,
Dance
And More . . .

**Noncredit
Informal
Courses
1982-83**

About Informal Courses

Discover another kind of learning this year — college learning without college credit through University of Minnesota Informal Courses.

Informal Courses are for people who are inquisitive, who want to know more about their world and themselves. A noncredit Informal Course that meets evenings or weekends for a few weeks, with lively discussion and sometimes a guest speaker or field trip, fits their schedules and their needs.

Anyone may enroll in Informal Courses. There are no grades, exams, transcripts, or entrance requirements.

Courses in this bulletin are arranged by term (fall, winter, spring). Within the course listings for each term, there are four topic areas: **Arts and Humanities**; **The Natural World**; **Society, Behavior, and Culture**; and **Personal Growth and Survival Skills**. In addition, there are special sections on noncredit afternoon and one-day symposiums (**Lifetime Adventures in Learning**) and exciting learning tours (**Informal Courses Study and Travel Adventures**).

Whatever your interests or goals, we hope we can help you along the way.

University of Minnesota Bulletin

(USPS 651-720)
Volume LXXXV, Number 15
August 6, 1982

Published by the University of Minnesota, Office of Admissions and Records, 150 Williamson Hall, 231 Pillsbury Drive S.E., Minneapolis, Minnesota 55455, monthly January, February, April, May, September, October, semimonthly June, November, trimonthly March, August, and five times in July. Second-class postage paid at Minneapolis, Minnesota. POSTMASTER: Send address changes to University of Minnesota Bulletin, Extension Classes, 101 Westbrook Hall, 77 Pleasant Street S.E., Minneapolis, Minnesota 55455.

The contents of this bulletin and other University bulletins, publications, or announcements are subject to change without notice.

Equal Opportunity

The University of Minnesota is committed to the policy that all persons shall have equal access to its programs, facilities, and employment without regard to race, creed, color, sex, national origin, or handicap. In adhering to this policy, the University abides by the requirements of Title IX of the Education Amendments of 1972, by Sections 503 and 504 of the Rehabilitation Act of 1973, and by other applicable statutes and regulations relating to equality of opportunity.

Inquiries regarding compliance may be directed to Lillian H. Williams, Director, Office of Equal Opportunity and Affirmative Action, 419 Morrill Hall, 100 Church Street S.E., University of Minnesota, Minneapolis, Minnesota 55455, (612) 373-7969, or to the Director of the Office of Civil Rights, Department of Education, Washington, D.C. 20202, or to the Director of the Office of Federal Contract Compliance Programs, Department of Labor, Washington, D.C. 20210.

Contents

Registration 2

General Information 2

Course Offerings

Fall 7

Winter 21

Spring 30

Lifetime Adventures in Learning 44

Study and Travel Adventures 47

Maps 51-56

Registration Forms 57-60

Continuing Education and Extension

Administrative Officers

Harold A. Miller, Dean
 Donald Z. Woods, Associate Dean for Instructional Systems
 Eleanor S. Fenton, Associate Dean for Continuing Education
 Barbara J. Stuhler, Associate Dean for Community Relations and Extension Services
 Gerald A. Klement, Administrative Director

Extension Classes Staff

John S. Malmberg, Director
 Beverly R. Sinniger, Assistant Director
 William R. VanEssendelft, Assistant Director
 Elvin Balkcum, Program Director
 Philip E. Lundblad, Program Director
 Steven J. Vite, Editor
 Charles R. Cheesebrough, Editor
 Vickie Roberts, Admissions and Records Associate
 Barb Halvorson, Office Supervisor

University of Minnesota Board of Regents

The Honorable Wenda Moore, Minneapolis, Chairman; The Honorable Lauris D. Krenik, Madison Lake, Vice Chairman; The Honorable Charles H. Casey, West Concord; The Honorable William B. Dosland, Moorhead; The Honorable Willis K. Drake, Edina; The Honorable Erwin L. Goldfine, Duluth; The Honorable David M. Lebedoff, Minneapolis; The Honorable Verne Long, Pipestone; The Honorable Charles F. McGuiggan, Marshall; The Honorable David K. Roe, St. Paul; The Honorable Mary T. Schertler, St. Paul; The Honorable Michael W. Unger, St. Paul.

Administrative Officers

C. Peter Magrath, President
 Frederick M. Bohlen, Vice President for Finance and Operations
 Lyle A. French, Vice President for Health Sciences
 Nils Hasselmo, Vice President for Administration and Planning
 Stanley B. Kegler, Vice President for Institutional Relations
 Kenneth H. Keller, Vice President for Academic Affairs
 Frank B. Wilderson, Vice President for Student Affairs

Registration

Registration is simple. Fill out and mail one of the forms that appears on the pages at the end of this booklet. You will need to use one form for each person who wishes to enroll in each class. Enclose a check or money order, made out to the University of Minnesota, for the full amount (course cost plus any course fees or late fees).

For those classes with limited enrollment (indicated by a ★ before the course title and number) include a separate check for each registration. Register early for classes with limited enrollment to avoid disappointment. If the class is filled when your registration is received, your registration will be returned immediately.

Registrations for fall term classes will be accepted starting August 23.

Registrations for winter term classes will be accepted starting November 22.

Registrations for spring term classes will be accepted starting February 22.

Send registration forms with tuition checks to:

Informal Courses
University of Minnesota
180 Westbrook Hall
77 Pleasant Street S.E.
Minneapolis, MN 55455

For more information or directions, call 376-7500



General Information

Tuition

The course descriptions include tuition and fees (if any) for each course. You are not registered officially until all fees are paid.

Senior citizens 62 and older may register for any Informal Course for one-half the regular tuition plus any course or special fees. Young people 12 to 16 may register for \$3 if they are genuinely interested, mature, and are accompanied by an adult

registered in the same class (course fees and special fees must be paid in full, however).

Senior citizen and youth registrations for limited-enrollment classes are accepted only after full-tuition students have registered and paid fees. Submit registration forms with tuition checks one week after the dates given under "Registration" above. Registrations for classes without enrollment limits can be submitted at the start of the registration period.

Late fees

Include a \$5 late fee if you are registering after the late fee date given with each course.

Cancellations

To cancel a class for which you have registered and paid fees, you must either notify the Extension Classes registration office in writing or come in to 101 Wesbrook Hall and cancel in person using an official registration form. Cancellations cannot be accepted by telephone. Instructors are not authorized to accept cancellations. Do not stop payment on a check. The effective date of cancellation is the day the cancellation is submitted to the registration office in person or the date of postmark if the cancellation is mailed in (not the date you stopped attending class).

Sometimes classes must be canceled because of insufficient enrollment. The department reserves the right to cancel, postpone, limit enrollment, split or combine classes, and to change instructors and class locations.

Refunds

Refunds for classes will be made under certain conditions.

1. A full refund will be made if a class is canceled by the Department of Extension Classes or if the day or hour of the class is changed by the department after the student has registered; if the student is recalled to, or enlists in, military service; or if a student is hospitalized or ill and cannot continue in the class (doctor's

statement required).

2. Students may cancel before the class begins. There is a \$5 cancellation fee. The balance of the course costs will be refunded.

3. After the course has begun, refunds of a portion of the course costs may be issued in relation to the total number of class meetings in each course. In no case will a refund be made after the fourth class meeting. Refunds are based on the number of times the class has met — not the number of times the student has attended. Late fees and transfer fees are not refundable.

Books

Occasionally the purchase of books is advised. These paperbacks will be available at University bookstores or in class.

Other Noncredit Options

Professional Improvement Courses (PICs) are designed for upward bound managers and professional people who need convenient, cost-effective opportunities to sharpen skills crucial to advancement and job effectiveness. PICs are offered evenings and weekends by Extension Classes; the time span is short, usually four to eight meetings. The weekly class meetings allow you to apply what you learn and provide a chance for feedback and practical evaluation in class.

In PICs this year, special emphasis is placed on the development of interpersonal, supervisory, communication, and management skills, with other courses available in managerial finance and control, computer use and applications, and external relations such as sales, advertising, marketing, and promotion. Call 373-5166 for a PIC catalog.

In addition to Informal Courses and PICs, many University Extension credit classes may be taken for no credit at one-half the regular tuition (plus any course fees or special fees). Courses marked with a diamond (◆) in the margin of the 1982-83 Extension Classes Bulletin are open to no-credit, half-price registration. No-

credit students keep up with readings and participate in class, but they do not submit assignments or take exams (no transcript record is kept).

To request the Extension Classes Bulletin listing credit courses, half-price registration procedures, and degrees and certificates available through evening attendance, call 376-3000.

Campus Building Abbreviations

AgEng (StP), *Agricultural Engineering, St. Paul campus*
AlderH (StP), *Alderman Hall, St. Paul campus*
AndH, *Anderson Hall*
AnScVM (StP), *Animal Science, Veterinary Medicine, St. Paul campus.*
Arch, *Architecture*
BellMus, *Bell Museum of Natural History*
BioSci (StP), *Biological Science Center, St. Paul campus*
BlegH, *Blegen Hall*
ClaOff (StP), *Classroom Office Building, St. Paul campus*
CMU, *Coffman Memorial Union*
EBCEC (StP), *Earle Brown Continuing Education Center, St. Paul campus*
FolH, *Folwell Hall*
FordH, *Ford Hall*
Greenhouses (StP), *Greenhouses, St. Paul campus*
HckrH (StP), *Haecker Hall, St. Paul campus*
HodsonH (StP), *Hodson Hall, St. Paul campus*
JonesH, *Jones Hall*
LindH, *Lind Hall*
MacP, *MacPhail Center (1128 LaSalle Ave., Minneapolis)*
McNH (StP), *McNeal Hall, St. Paul campus*
MinMet, *Mines and Metallurgy*
MurH, *Murphy Hall*
NCCE, *Nolte Center for Continuing Education*
NichH, *Nicholson Hall*
PeikH, *Peik Hall*
Phys, *Physics, Tate Laboratory of*
PillsH, *Pillsbury Hall*
ScottH, *Scott Hall*

SmithH, *Smith Hall*
SocSci, *Social Sciences Building*
WesH, *Wesbrook Hall*
WullH, *Wulling Hall*
Zoology, *Zoology*

More CEE Opportunities

Extension Classes is a department of Continuing Education and Extension (CEE), which provides many diverse educational opportunities both in and outside the classroom. Check out the other CEE offerings at the University of Minnesota.

- 1. Extension Classes.** Several two-year and four-year degrees and more than 30 specialized certificates are available in dozens of major areas. Telephone 373-3905 to discuss degree or educational planning with a professional program adviser from the Extension Counseling Office.
- 2. Extension Independent Study Correspondence Courses.** You may earn college credit by taking University Extension Independent Study correspondence courses. Call 373-3256.
- 3. TV, Radio Courses (Extension Independent Study).** Credit is available for several radio and television courses through CEE Independent Study. Call 376-4925 for information.
- 4. Continuing Education for Women.** Continuing Education for Women offers daytime liberal arts seminars and courses both on and off campus for credit. (Men are welcome in classes, too!) Telephone 373-9743.

1982-83

Informal Courses

(see complete course descriptions,
meeting dates on the pages that
follow)

Fall

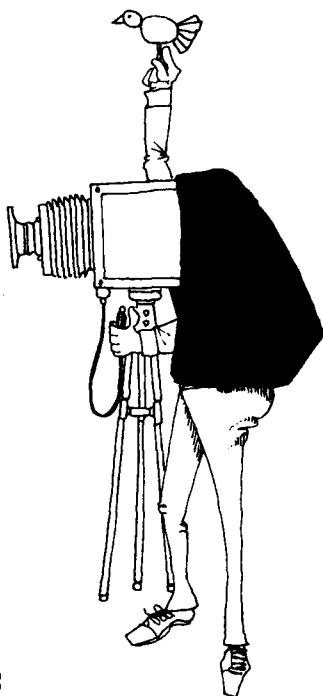
- 0106 Photo Workshop I
- 0108 Introduction to Color Photography
- 0111 Movie Criticism As If Audiences Mattered
- 0116 Twin Cities Theatre: Roots and Wings
- 0166 Intermediate Water Color Painting
- 0167 Printmaking
- 0175 One Hundred Years of the American Novel
- 0200 Field Ecology in Minnesota
- 0206 Minnesota Woodlands: Trees and Forests
- 0211 Minnesota Waterfowl: Identification and Natural History
- 0213 Natural History of Insects
- 0214 Natural History of Microscopic Worlds
- 0215 Mammals of Minnesota
- 0222 Identifying Birds: An Introduction to Ornithology
- 0235 Minnesota Birds: Abundance and Distribution
- 0254 Super-Insulated and Other Energy Efficient New Construction
- 0255 Residential Energy Design: Bus Tours
- 0287 Outdoor Survival Workshop
- 0294 Sailing: Basic Techniques
- 0341 The Soviet Union Today
- 0365 Minnesota Railroad History
- 0370 The Celebration of Christmas in Minnesota 1850-1925
- 0417 Dealing With Job Stress
- 0418 Balancing Work Life and Family Life
- 0430 Writing Fantasy and Science Fiction
- 0436 Magazine Writing
- 0440 How To Market Your Photographs
- 0441 Newsletter Workshop: Writing and Layout
- 0494 Gene Cloning: All About Genetic Engineering
- 0532 Hatha Yoga I

- 0574 Small Landlords: Rights, Remedies, and Obligations to Tenants
- 0581 Spanish for Travelers
- 0593 How To Get the Most Out of Your Home Computer
- 0810 Getting Acquainted with the Opera
- 0811 The Arab-Israeli Conflict: Past as Prologue
- 0900 The Singing Wilderness: Sigurd Olson's BWCA
- 0901 Natural History of the Prairie

Winter

- 0113 Music: How To Listen To It
- 0144 The Arts of China
- 0162 Introduction to Weaving
- 0175 One Hundred Years of the American Novel
- 0202 Taxidermy: Mounting a Game Bird
- 0209 The Origin and Evolution of Life
- 0210 Animal Behavior
- 0224 Winter Ecology in Minnesota
- 0225 Advanced Winter Ecology: A Field Course
- 0242 Vegetable Garden Planning and Planting
- 0245 Landscaping the Minnesota Home Grounds
- 0251 Energy Conservation, Super Insulation, and Solar Energy (new homes)
- 0255 Residential Energy Design: Bus Tours
- 0256 Existing Homes Made Energy Efficient
- 0274 Nature Photography, Art, and Technique
- 0275 Advanced Field and Nature Photography
- 0277 Natural History Drawing
- 0281 Winter Backpacking and Cross Country Skiing
- 0295 Sailing: The Art and Practice of Sailboat Cruising
- 0323 Political Cartooning
- 0332 Effective Lobbying
- 0416 Effective Time Management
- 0439 Creative Writing
- 0440 How To Market Your Photographs
- 0442 Publicity for Community Organizations
- 0531 Yoga: Practice and Philosophy

- 0571 Individual and Family Budget Planning
- 0572 Basic Income Taxation
- 0590 Rapid Reading and Comprehension
- 0800 Life Transitions
- 0801 Moral Issues in Medicine and Health
- 0802 Global Inflation
- 0812 Personal Financial Planning
- 0813 Getting To Know the Computer
- 0814 Conservatism — Old and New
- 0904 Off the Beaten Path in the Caribbean
- 0905 Birds of the Carolinas: An Early Spring Excursion
- 0906 A Fresh Look at Southern Spain
- 0907 Introduction to the Maya of Yucatan
- 0908 New York City Theatre Tour
- Spring**
- 0107 Photo Workshop II
- 0109 Advanced Color Photography
- 0114 Sad Movies Make Me Cry: A Guide to Films That Touch Our Lives
- 0118 Dance: Clues and Views
- 0150 Architecture and Minnesota
- 0165 Painting in Watercolor
- 0175 One Hundred Years of the American Novel
- 0181 The Postcard as Collectable: History and Image
- 0183 Antiques: Principles of Collecting
- 0186 Creative Bookbinding
- 0201 Minnesota Plant Families
- 0204 Minnesota Ecology: Human Impact
- 0212 Amphibians and Reptiles: An Introduction to Herpetology
- 0222 Identifying Birds: An Introduction to Ornithology
- 0223 Wild Flowers in Minnesota
- 0229 Identifying Birds: An Intermediate Course
- 0248 Hives and Honeybees: An Introduction to Beekeeping
- 0252 Solar Energy: Design and Construction for Residences
- 0254 Super-Insulated and Other Energy Efficient New Construction
- 0255 Residential Energy Design: Bus Tours
- 0263 Minnesota Geology: An Introduction to Your Surroundings
- 0275 Advanced Field and Nature Photography
- 0280 Recreation Land Issues: A Forum for Laypersons and Professionals
- 0288 Wilderness Navigation
- 0289 Wilderness Travel and Camping
- 0292 Whitewater Canoeing
- 0296 Sailing: Marine Navigation —Piloting
- 0300 Aging Parents: Communicating and Understanding
- 0379 Homefires: History of the Search for Better Ways to Heat and Light Our Homes
- 0394 Orientation for Travelers to Europe
- 0435 Poetry Writing
- 0440 How To Market Your Photographs
- 0441 Newsletter Workshop: Writing and Layout
- 0450 Career Decisions: Strategies for Change
- 0573 Wills and Estates: Informal Approaches to Peace of Mind
- 0576 Farm Management for the Absentee Landowner
- 0577 Getting Started in Part-Time Farming
- 0578 Reclaiming A Personal Past: Writing the History of Your Family
- 0582 French for Travelers
- 0583 German for Travelers
- 0803 The Great Depression
- 0804 The Mix of Midwestern Speech
- 0815 North of the Border: A Perspective on Canada
- 0902 The Scandinavian Immigrant Experience in the Upper Midwest
- 0903 Mississippi River Towns: Mirrors of the Past



Arts and Humanities

★IC 0106 PHOTO WORKSHOP I. No credit, \$38 plus \$3 course fee. Total \$41.

An exploration of the camera, optics, film, and related photographic processes. Requires little or no experience in photography. Includes an introduction to darkroom developing and printing. Photographic paper and film are furnished. Bring camera to first class period. Consultation about camera selection will be available. (Limited to 25)

Fall Spec Term Sec 1 T—6-8:30, Oct. 26-Nov. 23
(5 meetings),
MacP 5, Millikan
No late fee through Oct. 19

(Jeff Millikan is a lecturer in the General College)

★IC 0108 INTRODUCTION TO COLOR PHOTOGRAPHY. No credit, \$60 plus \$20 course fee. Total \$80.

A foundation course in the growing field of color photography, designed to provide the student with practical knowledge and experience in basic color work. Course includes (a) lecture-demonstrations of equipment, color processes, and techniques; and (b) supervised camera assignments in the studio and on outdoor field trips. Student must have camera. (Limited to 30)

Fall Spec Term Sec 1 T—6:30-9, Oct. 5-26,
Nov. 2-23 (8 meetings), AgEng 102, StP
Campus, Webb
No late fee through Sept. 28

(Harry Webb is the director of the Audio Visual Center at the College of St. Thomas)

Fall

IC 0111 MOVIE CRITICISM AS IF AUDIENCES MATTERED. No credit, \$52.

At the price of a movie ticket these days, everyone has to be his or her own film critic as well. We'll start off with some background on the development of motion pictures, and then proceed to polish our critical faculties by viewing and discussing films in class, from a Vietnam War-era descent into hell (the Paul Schrader scripted *Rolling Thunder*, with William Devane), to classic thrillers (*The Third Man*, *Psycho*, *Carrie*); from a contemporary work combining humor and pathos (Woody Allen's *Manhattan*), to international masterpieces (Fellini's *8½*); literary adaptations (John Huston's *Wise Blood*), psychological shockers (Roman Polanski's *The Tenant*), great cartoons (by Disney, Fleischer, etc.), to the work voted one of the ten greatest films of all time: Orson Welles' *Citizen Kane*. Finally, we'll focus our critical faculties on a film that is currently playing in the Twin Cities. Classes include introductions, film screenings, and discussions.

Fall Spec Term Sec 1 **T**—6:30-8:30, Oct. 5-Nov. 23 (8 meetings),
MurH 105, Bliss
No late fee through Sept. 28

(*Michael Bliss, Ph.D., has taught film and English at the University of Minnesota and Hamline University. He currently is program notes consultant for Cinemaland Theatres and contributing editor to Classic Images*)

IC 0116 TWIN CITIES THEATRE: ROOTS AND WINGS. No credit, \$41.

Provides a provocative, stimulating, and thoughtful look at what has been acclaimed to be some of the nation's very best and most original theatre. Attend three performances from among these area companies: At the Foot of the Mountain, Heart of the Beast, Cherry Creek, Actor's Theatre, Theatre Three, Illusion Theatre, Palace Theatre (exact performances will depend on fall schedule of these groups). Meet and talk with artists and discuss these productions. Students get a close-up look at several of the area's most original and exciting theatre companies. **Tuition does not include cost of theatre tickets.** (A joint Extension Classes/Continuing Education for Women/Continuing Education in the Arts class)

Fall Spec Term Sec 1 **Th**—7-8:30, Oct. 7-28
(4 meetings plus three performances on
Thursday or Friday evenings),
WullH 130, O'Fallon
No late fee through Sept. 30.

(*David O'Fallon is director of Continuing Education in the Arts*)

★IC 0166 INTERMEDIATE WATER COLOR PAINTING. No credit, \$55.

An intense exploration of water color painting. Each class session focuses on one of the following: painting techniques, abstractions, use of negative space, collage, calligraphy, and use of opaques. Individual assistance and group critique. (Limited to 25)

Fall Spec Term Sec 1 **W**—7-9:30, Oct. 6-Nov. 17
(7 meetings),
WullH 120, Netz
No late fee through Sept. 29

(*Marija Skutans Netz is an instructor in Art Education and a free lance water-colorist*)

Fall

★**IC 0167 PRINTMAKING.** No credit, \$43.

The idea of creating a single image again and again is a very exciting process. This workshop is an introduction to printmaking. Emphasis is directed to a creative and individual approach to the basic techniques of drawing, designing, processing, printing, and presentation of prints. Materials involve linoleum, wood, cardboard, string, vegetable, plaster, found objects, and materials from nature. Class periods are devoted to lecture, demonstration, creation of prints and critiques. (Limited to 25)

Fall Spec Term Sec 1 **W**—6:30-8:30, Oct. 6-Nov. 10
(6 meetings),
WullH 220, Olson
No late fee through Sept. 29

(George Olson is a professor in the Art Education program)

IC 0175 ONE HUNDRED YEARS OF THE AMERICAN NOVEL. No credit, \$68 each term.

A systematic overview of the American Novel from the haunted puritanism of Hawthorne to the frustrations of Hemingway provides an insight into the development of the novel in America. Through analysis of character, themes, symbols, and styles, we identify aspects that render these novels particularly American—i.e., how they reflect American ideals, character, and society. **Fall term:** Focuses on Hawthorne and Melville, essentially inner-oriented novelists, and concludes with Mark Twain. **Winter term:** Henry James, Edith Wharton, and Theodore Dreiser. **Spring term:** Willa Cather, F. Scott Fitzgerald, and Ernest Hemingway. A joint Continuing Education for Women/Extension Classes class)

Fall Spec Term Sec 1 **Th**—7-9, Oct. 7-Dec. 16
(10 sessions—no class Nov. 25),
FolH 208, Kheim
No late fee through Sept. 30

(Johanna Kheim has taught French and humanities at the University of Minnesota)

The Natural World

★**IC 0200 FIELD ECOLOGY IN MINNESOTA.** No credit (3.3 CEUs available), \$43 plus \$30 course fee. Total \$73.

Minnesota has an astonishingly large array of habitats, from peatlands to drought-stressed prairies, rich maple-basswood forests, pine woods, cattail marshes, cedar swamps, and thousands of lakes. This course gives you the tools to understand more about the interactions among plants, animals, soils, geology, and climate to add to your enjoyment of the outdoors. Classroom sessions involve lectures, slides and films, and discussion to introduce you to some of the fundamental concepts in ecology such as energy flow, nutrient cycling, community structure, species diversity, succession, and adaptation. There is a half-day field trip (**Oct. 2**) to Theodore Wirth, a full-day field trip (**Oct. 16**) to Cedar Creek Natural History Area, and an overnight field trip (**Oct. 30-31**) to northern Minnesota. Students visit various types of Minnesota environments, stretching understanding of them by applying the concepts discussed in class. (Offered in cooperation with the Bell Museum of Natural History. Limited to 25)

Fall Spec Term Sec 1 **Th**—7-9, Sept. 30-Nov. 4
(6 meetings plus field trips),
Zoology 101D, Ford
No late fee through Sept. 23

(Jesse Ford is an experienced field ecologist and outdoor educator, and a graduate student in Ecology and Behavioral Biology)

Fall

★IC 0206 MINNESOTA'S WOODLANDS: TREES AND FORESTS. No credit, (3.0 CEUs available), \$43 plus \$25 course fee. Total \$68.

From the spruce forests along the North Shore to the oak forests in the south, Minnesota is blessed with a variety of natural woodlands. This course will acquaint you with the important tree species of these forests, and the distribution of Minnesota's forest types. Topics will include an introduction to the plant kingdom, interactions between trees and their environment, human utilization of the forests, and the history of Minnesota's vegetation. Illustrated with slides and films. Two local field trips on **Sept. 25** and **Oct. 9**, and a weekend field trip to Northern Minnesota **Oct. 2-3**. (Offered in cooperation with the Bell Museum of Natural History. Limited to 25)

Fall Spec Term Sec 1 **W**—7-9, Sept. 22-Oct. 27 (6 meetings)
plus three field trips, FordH 40, Allison
This class begins before the start of
the regular fall term. Registrations
will be accepted beginning Aug. 23,
in room 180 Wesbrook Hall. Call
376-7500 for information.
No late fee through Sept. 15

(Taber Allison is a plant ecologist and an advanced graduate student in the Department of Ecology and Behavioral Biology)

★IC 0211 MINNESOTA WATERFOWL: IDENTIFICATION AND NATURAL HISTORY. No credit, (2.7 CEUs available), \$43 plus \$18 course fee. Total \$61.

Minnesota, with all of its lakes and marshes, is highly attractive to breeding and migrating ducks, swans, and geese. Become familiar with our state's waterfowl through films, slides, and the Bell Museum's dioramas, and learn to identify them in the field during three trips to Minnesota wetlands. Lectures will review the natural history of Minnesota species: one lecture will cover state conservation practices. One half-day (**Oct. 9**) morning and two full-day (**Oct. 23, 30**) field trips. (Offered in cooperation with the Bell Museum of Natural History. Limited to 25)

Fall Spec Term Sec 1 **Th**—7-9, Sept. 30-Nov. 4 (6 meetings) plus
field trips,
BellMus 311 (use SW entrance), Burns
No late fee through Sept. 23

(Jeffrey Burns is a graduate student in the Department of Ecology and Behavioral Biology. His research activities include behavioral studies of captive waterfowl)

★IC 0213 NATURAL HISTORY OF INSECTS. No credit, (2.4 CEUs available), \$43 plus \$11 course fee. Total \$54.

Enter the world of insects with a look at their fascinating natural history. Topics include a survey of their structure, life history, and behavior: identification of insects; and a discussion of the interactions between insects and people. Slides, films, and specimens augment lectures. Field trips concentrate on collection and identification of insects in their natural habitats. **Saturday morning field trips on Oct. 2, 9, 16.** (Offered in cooperation with the Bell Museum of Natural History. Limited to 25)

Fall Spec Term Sec 1 **Th**—7-9, Sept. 30-Nov 4 (6 meetings)
plus field trips), 485 HodsonH, StP Campus, Johnston
No late fee through Sept. 23

(Richard L. Johnston is an advanced graduate student in the Department of Entomology, Fisheries, and Wildlife)

- ★**IC 0214 NATURAL HISTORY OF MICROSCOPIC WORLDS.** No credit, (2.4 CEUs available), \$43 plus \$11 course fee. Total \$54.

Combining lectures, laboratory, and field trips, this course offers a unique opportunity to study a fascinating variety of "mini-communities" while being introduced to a diversity of small organisms from bacteria, algae, and protozoans, to mites, spiders, and insects. A study of the adaptations which have allowed these tiny creatures to survive, and a look at their amazing relationships with each other and with larger animals such as birds and mammals. Early in the course students are introduced to some of the methods of study, including collecting techniques, use of a standard optical microscope, and a demonstration of the scanning electron microscope. Evening sessions are a combination of lecture and laboratory. A degree of flexibility in class will allow students to spend extra time, when possible on special interests.

During three Saturday morning field trips (Oct. 2, 9, 23), ponds, streams, and wooded areas are visited in search of particular organisms and communities. Topics covered include the organisms living on humans, and the living things in pond water, streams, bark, bird nests, pitcher plants, and flowers. No biological background necessary—only a well-developed curiosity. (Offered in cooperation with the Bell Museum of Natural History. Limited to 25)

Fall Spec Term Sec 1 **M**—7-9, Sept. 27-Nov. 1 (6 meetings plus field trips),
Zoology 101D, Hamann
No late fee through Sept. 20

(Kimm Hamann is an advanced graduate student in the Department of Ecology and Behavioral Biology and has teaching and research experience in several areas of zoology and ecology)

- ★**IC 0215 MAMMALS OF MINNESOTA.** No credit, (3.0 CEUs available), \$43 plus \$25 course fee. Total \$68.

What do a moose and a mouse have in common? The solitary, ill-tempered giant of the northern forests and the small, nervous denizen of the underbrush are both among the 70-odd species of mammals that reside in our state. Through lectures, films, and demonstrations, this course introduces the student to these furred co-inhabitants of Minnesota. Topics include their unique life histories and adaptations, the habitats and regions within the state where they are found, ways to identify individual species by skin, skull, and sign, and current research and important issues concerning Minnesota's mammals. Two half-day field trips (Oct. 2, 23) and one weekend field trip (Oct. 9-10) give the student first-hand experience with the local mammals and field techniques used to study them in the wild. (Offered in cooperation with the Bell Museum of Natural History. Limited to 25)

Fall Spec Term Sec 1 **T**—7-9, Sept. 28-Nov. 2 (6 meetings plus field trips),
BellMus 175, (use SW entrance), Nordquist
No late fee through Sept. 21

(Gerda Nordquist is a graduate student in Ecology and Behavioral Biology; she has had extensive field work with mammals in Minnesota and elsewhere)

- ★**IC 0222 IDENTIFYING BIRDS: AN INTRODUCTION TO ORNITHOLOGY.** No credit, (3.0 CEUs available), \$43 plus \$23 course fee. Total \$66.

Combining classroom time with Saturday morning field trips, this course provides an opportunity for lab study and observation of birds in their natural habitat. The course is designed to help those who love birds learn to recognize and identify about 150 different species of Minnesota birds and to learn the general principles of field identification. Bird behavior and ecology will also be discussed. **Field trips:** Saturday mornings on Oct. 2, 23 in the fall sections; Apr. 23 and May 7, 14 in the spring sections. All-day Saturday trips to Hawk Ridge (Duluth) on Sept. 25 in the fall only; to Crex Meadows Wildlife Area (Wisconsin) on Oct. 16 in the fall, and April 9 in the

Fall

spring. (Offered in cooperation with the Bell Museum of Natural History. Limited to 25)

- Fall Spec Term**
- Sec 1 **T**—7-9, Sept. 21, 28, Oct. 5, 19, 26, Nov. 2
(6 meetings plus field trips), BellMus 311
(use SW entrance), Blockstein
No late fee through Sept. 14
- Sec 2 **W**—7-9, Sept. 22, 29, Oct. 6, 20, 27, Nov. 3
(6 meetings plus field trips), BellMus 311
(Use SW entrance), Eliason
No late fee through Sept. 15

(Jeffrey Burns, Kimm Hamann, David Blockstein, and Bonita Eliason are graduate students in the Department of Ecology and Behavioral Biology)

★IC 0234 OUR FEATHERED FRIENDS: A BIRD COURSE FOR TEACHERS. No credit. Tentatively scheduled for Summer 1983.

★IC 0235 MINNESOTA BIRDS: ABUNDANCE AND DISTRIBUTION. No credit, (3.8 CEUs available), \$24 plus \$40 course fee. Total \$64.

A continuation of IC 0222 and IC 0229, but with a concentration on the distribution and abundance of Minnesota's birds. Learning birds not only means identification but knowing where they are found, when is the best time of year to see certain species, how many species there are in Minnesota, and how many you can expect to see. Birding can be a lifelong hobby if you learn the skills of where, when, and how many birds. Classroom sessions are combined with three all-day Saturday field trips (Sept. 25 to Sherburne NWR, Oct. 23 to an appropriate site, Oct. 30 to Mille Lacs and vicinity) and a weekend trip to Itasca State park (Oct. 9-10). These trips give the advanced observer a chance to increase observational skills and to increase the Minnesota Life List. (Offered in cooperation with the Bell Museum of Natural History. Limited to 25)

- Fall Spec Term**
- Sec 1 **M**—7-9, Sept. 20, Oct. 4, 18, 25
(4 meetings plus field trips).
BellMus 311 (use SW entrance), Janssen
No late fee through Sept. 13

(Bob Janssen is editor of *The Loon* and co-author of *Minnesota Birds: When, Where and How Many*. He is one of the most experienced field ornithologists in the state)

IC 0254 SUPER-INSULATED AND OTHER ENERGY EFFICIENT NEW CONSTRUCTION. No credit, \$34 plus \$7 course fee. Total \$41.

A survey of new housing design concepts. Each session includes experts from the housing industry discussing environmental design, climate orientation, earth-sheltered and super-insulated housing, active and passive solar energy, energy-efficient space and domestic hot water heating systems, heat exchangers and air quality, energy conserving appliances, financing new construction, and current federal and state energy tax credits. Guest speakers from private businesses, organizations, and state agencies. Each section concludes with a Saturday tour of energy-efficient demonstration houses. (A joint Extension Classes/Science Museum of Minnesota Class)

- Fall Spec Term**
- Sec 1 **W**—7-9:30, Oct. 6-Nov. 3 (5 meetings plus field trip) MurH 308, Getty
No late fee through Sept. 29

(Scott Getty is the director of Ouroboros South, the University of Minnesota Alternative Energy House)

Fall

★IC 0255 RESIDENTIAL ENERGY DESIGN: BUS TOURS. No credit, \$22.

Each term a bus tour visits energy-efficient new and existing homes in the Twin Cities and talks with homeowners, architects, and contractors. The tour covers super-insulated and earth-sheltered housing, energy-efficient heating systems and appliances, passive and active solar energy, retrofitting, window insulation, and current federal and state energy tax credits. (Limited to 40)

Fall Spec Term Sec 1 **Sa**—Oct. 9,
9 a.m.-4, HckrH 210, StP Campus, Getty
No late fee through Oct. 1

(Scott Getty is the director of Ouroboros South, the University of Minnesota Alternative Energy House)

IC 0287 OUTDOOR SURVIVAL WORKSHOP. No credit, \$35 plus \$25 special fee. Total \$60.

How is it possible for one person to react to an unexpected emergency as though it were a minor inconvenience, while another views it as a life-threatening situation? This course explores how you can fall into the first category: being physically and mentally capable of handling nearly any survival circumstance possible. Topics include the psychology of survival, effects of cold and heat on the body, energy, insulation, clothing, firecraft, signalling, improvising, search and rescue, and emergency survival kits. Participants have the opportunity to put their skills into practice during an overnight field trip (**Nov. 6-7**) where they will use only a small homemade survival kit to supply their needs.

Fall Spec Term Sec 1 **TTh**—7-10, Nov. 2, 4 (2 meetings plus
field trip), EBCEC 52, StP Campus, Kneeland
No late fee through Oct. 26

IC 0294 SAILING: BASIC TECHNIQUES. No credit, \$54.

If you've ever watched a sailboat breezing along a lake and thought, "I'd like to do that," this course is for you. Designed for the absolute novice, it helps students learn about the beginning techniques of sailing, different kinds of small boats, gear, boating safety, and what it would cost to buy your own sailboat.

Fall Spec Term Sec 1 **W**—7-9, Oct. 6-Nov. 24 (8 meetings),
ClaOff B30, StP Campus, Bodley
No late fee through Sept. 29

Society, Behavior, and Culture

IC 0341 THE SOVIET UNION TODAY. No credit, \$43.

The Soviet Union looms larger than ever before on the American horizon as we look into the 1980s. Yet, while our judgments about the internal and foreign affairs of that country have an influence on U.S. policies, we remain insufficiently informed about its history and the complexity of its current situation. This course offers an overview of key problems of recent Soviet history and affairs and, in the process, introduces the student to the diversity of opinions and interpretations about the nature of the Soviet Union. Each session presents a lecture followed by a question-and-answer period on a main problem in today's Soviet Union. Topics covered include recent trends and directions in Soviet politics; Soviet policy and the West; the military in Soviet life and politics; the Soviet economy; culture and the arts; and social, ethnic, and intellectual ferment in the 80s.

Fall

(Offered in cooperation with the World Affairs Center)

Fall Spec Term Sec 1 **Th**—7-9, Oct. 7-Nov. 11 (6 meetings),
FordH 60, Hayes
No late fee through Sept. 30

(Nicholas Hayes, coordinator in Extension Independent Study, is a specialist in the history of the Soviet Union)

★IC 0365 MINNESOTA RAILROAD HISTORY: AN INSIDE LOOK. No credit, \$17 plus \$10 course fee. Total \$27.

An inside look at more than a century of Minnesota railroading history from the collections of the Minnesota Historical Society. Meeting in railroad entrepreneur James J. Hill's house, 240 Summit Ave., St. Paul, the first class offers an introductory overview of the state's rail development since 1861 when the locomotive "William Crooks" arrived by steamboat. The second class meets in the society's St. Paul Research Center at 1500 Mississippi St., which houses one of America's largest railroad research collections—the archives of the Northern Pacific and Great Northern railways, which include some three linear miles of historic records. The class examines documents, engineering drawings, and photographs from these and other holdings. **A Saturday morning field trip on Oct. 16** includes visits to historic Twin Cities railroad sites. (Limited to 36)

Fall Spec Term Sec 1 **Th**—7-9, Oct. 7-14 (2 meetings plus field
trip). See meeting sites above. Wickre
No late fee through Sept. 30

(John M. Wickre is an archivist and railroad history specialist for the Minnesota Historical Society)

IC 0370 THE CELEBRATION OF CHRISTMAS IN MINNESOTA, 1850-1925. No credit, \$21.

A two-session course including a visit to the Alexander Ramsey House (admission fee \$1.50 not included in tuition) decorated for the holiday season. In 1850, Minnesota was on the frontier, and Christmas was a relatively austere do-it-yourself holiday in the New England tradition of the first white settlers. Later as immigrants with different ethnic customs arrived, the holiday became much more festive. By 1925, however, the holiday had become integrated with the commercial activities of an industrialized nation. The first session Nov. 23 on Campus in room 20, Architecture Building, explores these changes using a slide presentation plus artifacts and decorations reflecting earlier hand-crafted traditions. The second session involves a visit to the Ramsey House.

Fall Spec Term Sec 1 **T**—7:30-9:30, Nov. 23-30 (2 meetings).
See meeting sites above. Westbrook
No late fee through Nov. 16

(Virginia Westbrook is a free lance consultant in history education)

Personal Growth and Survival Skills

IC 0417 DEALING WITH JOB STRESS. No credit, \$96 plus \$24 course fee. Total \$120.

Turn boredom and discomfort into comfort and excitement. More than half of all stress and dissatisfaction on the job is related to nonproductive behaviors. Improving personal productivity is the single most effective method of dealing with job stress. Much of the remaining stress is related to poor lifestyle. Changing into a healthier lifestyle is another powerful tool for dealing with job stress. For the remaining, seemingly irreducible stresses, this course teaches participants to select and apply appropriate stress management or satisfaction enhancement techniques. A final plan for improving productivity, reducing stress, increasing job satisfaction, and reducing health risks is developed by each participant. Offered in cooperation with Continu-

Fall

ing Education for Women. (Meets concurrently with PIC 0201. Limited to a combined total of 40)

Fall Spec Term Sec 1 **Sa**—8 a.m.-12; Oct. 23-Nov. 20
(4 meetings—no meeting Oct. 30),
EBCEC 52, StP Campus, Dahl
No late fee through Oct. 15

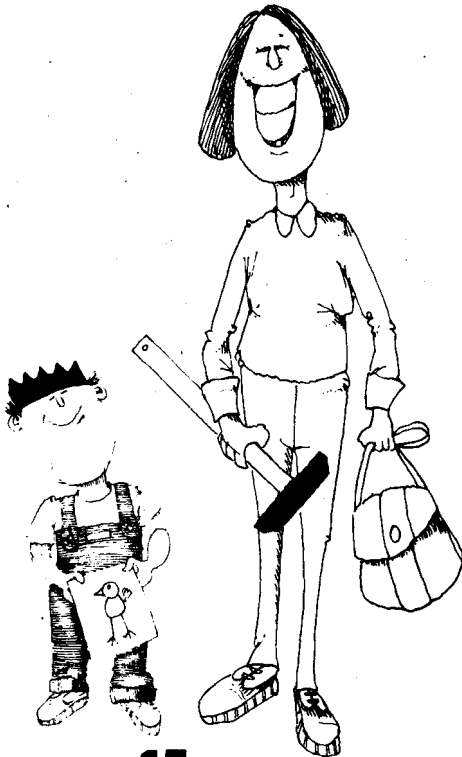
(Tor Dahl is an associate professor in Hospital and Health Care Administration at the University and an internationally recognized expert in stress management and increasing personal productivity)

IC 0418 BALANCING WORK LIFE AND FAMILY LIFE. No credit, \$75 plus \$5 course fee. Total \$80.

An overview of common chronic and acute tensions and stresses experienced by professionals attempting to integrate demanding careers with quality family life (guilt, use of time, child care, workaholism, relocation). Topics covered include examination of expectations, determining goals, prioritizing, negotiating, time and stress management. Special concerns of intra-family coping strategies for alleviating work and family stress are examined as useful to participants and as applicable to supervisees. Offered in cooperation with Continuing Education for Women. (Meets concurrently with PIC 0202. Limited to a combined total of 30)

Fall Spec Term Sec 1 **M**—6-9, Nov. 8-Dec. 6 (5 meetings),
EBCEC 52, StP Campus, Portner
No late fee through Nov. 1

(Joyce Portner is a Program Director in Continuing Education in Social Work at the University and a marriage and family therapist at the Family Consultation Center)



Back-to-School Workshops

Free

August 24 or November 20 or March 16

If you have been thinking about going back to school and don't know where to begin, plan to attend one of these three informal workshops. Whether you have had some college or none at all or if you are thinking about exploring a career change, you will find answers to questions about courses, degrees, certificates, financial aids, and other student services. Find out how vocational testing can help you get started. A tour of campus and Wilson Library will help acquaint you with the University.

If you are not confident about how to study, find out what kind of help you need. You'll learn about free tutoring in note taking, outlining, theme writing, reading, grammar, or whatever help you need to complete a course.

The workshop is informal with plenty of time for questions and answers. Parking at indoor rates is usually available in the underground garage of the same building where the workshop meets (Nolte Center). Or park outside about a block and a half away in the pay lot on 4th Street at 17th Avenue S.E. If you are not familiar with campus, call for directions and a map: 376-7500.

The workshop will be held Tuesday, August 24, 6-9:30 p.m.; Saturday, November 20, from 8:30 a.m. to 1 p.m.; or Wednesday, March 16, 6-9:30 p.m., in room 140 of the Nolte Center, on the corner of Pillsbury Drive and Church Street (17th Avenue S.E.) (Each is limited to 80 students.)

A Continuing Education and Extension counselor will be there to tell you about opportunities in Extension Classes, Independent Study correspondence and media courses, Continuing Education for Women programs, and a host of other Continuing Education opportunities at the University.

The director of the Reading/Writing Skills Center will answer questions about study skills help and demonstrate in small groups the tutoring program available.

To add your name to the registration list for this free workshop, just give us a call at:

376-7500

★IC 0430 WRITING: FANTASY AND SCIENCE FICTION. No credit, \$52.

An introduction to writing all forms of science fiction and fantasy. Covers both general writing topics and topics of special relevance to science fiction and fantasy (extrapolation, other worlds and other beings, science fiction clichés, suspending disbelief, science fiction satire, and marketing manuscripts). Approaches fantasy and science fiction both as entertainment and as literature, and the class involves a good deal of in-class writing as well as discussions and lectures. The atmosphere is informal. Private conferences and attention to individual pieces of writing are available at the student's option. Open to both new and experienced writers. (A joint continuing Education for Women/Extension Classes class limited to 12 Extension students)

Fall Spec Term Sec 1 T—7-9, Oct. 5-Nov. 23
(8 meetings),
MinMet 104, Edelstein
No late fee through Sept. 28

(Scott Edelstein has published 30 pieces of science fiction and fantasy in magazines and books around the world. He is the editor of science fiction anthology, **Future Pastimes**)

IC 0436 MAGAZINE WRITING. No credit, \$52.

The rapidly growing world of magazines provides many opportunities for the freelance writer. This practical course helps you get started by treating topics such as how to get article ideas; types of articles; writing techniques; how to query an editor; writing ethics and etiquette; manuscript submission. Class format consists of lecture, discussion, and critiques of students' work.

Fall Spec Term Sec 1 **W**—6:30-9, Sept. 29-Nov. 17 (8 meetings),
FordH 60

No late fee through Sept. 22

★IC 0440 HOW TO MARKET YOUR PHOTOGRAPHS. No credit, \$36.

Taught by free lance photographer Rohn Engh, this course tells you what you need to know to sell your photos, and how to start up a photo marketing business. The difference between a photograph and a marketable photograph is thoroughly discussed. This is a marketing course and there is little emphasis on picture taking itself; participants should already have knowledge of how to take a good photograph. No camera is necessary. (Limited to 50)

Fall Spec Term Sec 1 **TW**—7-10, Oct. 5, 6 (2 meetings),
EBCEC 62, StP Campus, Engh

No late fee through Sept. 28

(Rohn Engh is the author of Sell and Re-Sell Your Photos)

★IC 0441 NEWSLETTER WORKSHOP: WRITING AND LAYOUT. No credit, \$38 each section.

Does your association, business, club, or organization issue a newsletter? Gain or improve your newsletter production skills by taking this workshop. Each section is four laboratory sessions of instruction and supervised practice. **Sections 1, 3—Writing:** How to write articles for your newsletter. Develop skills and techniques to write informative and interesting material for your publication. Setting up a schedule and deadlines. Importance of lead sentences and paragraphs. Sources of information for articles, writing good headlines, and the kinds of information best suited for your readership. **Sections 2, 4—Layout:** How to create a more effective and attractive newsletter with design and typography. Techniques of layout including various formats; paper sizes; printing processes; press-on, photographic, and strike-on typesetting; art and photography; choosing type for legibility; keylining camera-ready copy, postal regulations, and working with printers. (Limited to 25)

Fall Spec Term Sec 1 **Writing** **M**—7-9, Oct. 7-28 (4 meetings),
MinMet 124

No late fee through Sept. 30

Sec 2 **Layout** **T**—7-9, Nov. 2-23 (4 meetings),

MinMet 124, Wilson (Limit 30)

No late fee through Oct. 26

IC 0494 GENE CLONING: ALL ABOUT GENETIC ENGINEERING. No credit, \$38.

What is gene cloning? What are the risks? What regulations are required today and tomorrow? Course develops comprehensive awareness of what recombinant technology is all about—beginning at an elementary level and progressing through a review of origins and principles of gene manipulation. Includes recent achievements of genetic engineering and potential application to our daily lives (such as production of human insulin, growth hormones, and gene transfers to improve plants and animals). The responsibility of both users and developers of gene cloning technologies is discussed.

Fall Spec Term Sec 1 **M**—6:30-8:30, Oct. 4-Nov. 8 (no class Oct. 11),
5 meetings, BioSci 44, StP Campus, Hackett

No late fee through Sept. 27.

(Perry Hackett, Jr., is an assistant professor in Genetics and Cell Biology)

Math Anxiety Program

The Math Anxiety Program is designed especially for people who are afraid of mathematics or who encounter blocks in mathematics. Through a combination of course work and supportive services students can overcome their fear of mathematics and master the level of mathematics they need or want. The program helps students deal with their attitudes and feelings about math at the same time they are working on their math skills.

The program is offered through Continuing Education for Women in cooperation with Extension Classes and the General College. Men and women are welcome. **For further information about exact times, dates and locations and for registration call 376-9385 or write 200 Wesbrook Hall, 77 Pleasant Street S.E., University of Minnesota, Minneapolis, MN 55455.**

The *Math Anxiety Diagnostic Clinic* is the first step of the program. Tests and questionnaires are used to help students assess math skills and level of math anxiety. The Clinic will explore math anxiety, how it develops and how it affects math performance, and discussion on using math as a problem-solving tool. The Math Anxiety Diagnostic Clinic will be held on Wed., Sept. 15, and Thurs., Jan. 20, 6-9:30 p.m. on the Minneapolis campus. The fee is \$17. Advance registration is required.

Tutorials and/or support group are available for students registered in the program.

Arithmetic and Elementary Algebra, a noncredit class, will be offered in conjunction with the program. Individualized instruction and group lecture in basic mathematics including fractions, decimals, percentages, word problems, and elementary algebra. Students proceed at their own rate. Student may listen to lectures on arithmetic and/or elementary algebra, or work on an independent basis with the supervision of one of two instructors. No math background is necessary. The class is held Wednesday evenings, 6:30-9 fall semester on the Minneapolis campus, and Wednesday evenings, 6:30-9 spring semester on the Minneapolis campus. Instructor is Doug Robertson.

★**IC 0532 HATHA YOGA I.** No credit, \$49.

Yoga is a science of movement and posture, developed over the last 5,000 years. Through carefully planned exercises and meditation, the body becomes flexible, the nerves and glands are set into balance, and the mind is able to relax. (Limited to 30)

Fall Spec Term Sec 1 **M**—6:30-8:30, Oct. 18-Nov. 22 (6 meetings),
NCC 229, Sovik

No late fee through Oct. 12

(Rolf E. Sovik is executive director of the Center for Higher Consciousness)

Fall

IC 0574 SMALL LANDLORDS: RIGHTS, REMEDIES, AND OBLIGATIONS TO TENANTS.

No credit, \$54.

Intended for landlords and landladies who own small rental income properties. There are no prerequisites for the course; the course is designed specifically for laypersons, i.e., those who have had no previous legal courses. The following topics will be included: What to do before the tenant moves in; leases and rental agreements; Landlords' rights, remedies, and obligations; Tenants' rights and obligations; Who is responsible for making repairs, and redecorating; Housing code; Liability for personal injuries; Landlord identification; abandonment by tenant; Eviction by landlord; Unlawful detainer; Constructive eviction; What to do immediately before and after tenant moves out; Security deposits—prepayment of rent; and use of conciliation court.

Fall Spec Term Sec 1 **M**—6:30-9, Oct. 4-Nov. 29 (8 meetings—
no class Oct. 11),
SmithH 315, Egge
No late fee through Sept. 27

(Trygve Egge is an adjunct professor in the General College and an attorney and real estate broker)

IC 0581 SPANISH FOR TRAVELERS. No credit, \$38.

A survival course for those with no previous knowledge of Spanish. Will provide you with the basic Spanish vocabulary necessary for coping with everyday travel situations: changing money, obtaining train tickets and information, renting hotel rooms, shopping, ordering meals, asking directions, understanding telephones, post offices, and public transportation systems. Increased knowledge of Spain, Latin America, and of Hispanic culture will help you travel more adventurously and more economically. Emphasis will vary from area to area within the Hispanic world. (A joint Extension Classes/Continuing Education for Women class)

Fall Spec Term Sec 1 **M**—7-8:40, Oct. 4-Nov. 15 (6 meetings—
no class Oct. 11),
PillsH 110, Narvaéz
No late fee through Sept. 27

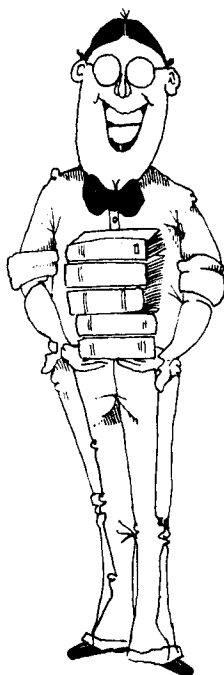
(Eric Narvaéz is an instructor at the College of St. Catherine)

★IC 0593 HOW TO GET THE MOST OUT OF YOUR HOME COMPUTER. No credit, \$38.

If you own a micro computer or are thinking about purchasing one, this course is for you. It includes lectures on how to load and run programs, an introduction to flowcharting, discussion of programming problems encountered by users of micro computers, and actual hands on experience with micro computers. A field trip allows students to look at various home computers on the market with a discussion of the advantages and disadvantages of various products. (Limited to 20)

Fall Spec Term Sec 1 **T**—7-9, Oct. 5-Nov. 2 (5 meetings),
PeikH 355, Philipson
No late fee through Sept. 28

(Willard Philipson is a professor in the Curriculum and Instructional Systems division of the College of Education)



Free Library Course

Knowing how to use the library efficiently is essential for students researching a term paper or searching for a particular book or periodical. Students sometimes spend a lot of time looking for materials that aren't so difficult to find if they know where to begin.

This is a free, two-night course, offered by Extension Classes in cooperation with MINITEX (Minnesota Interlibrary Telecommunications Exchange). No preregistration is necessary. Instructor for the course is Marcia Pankake, an assistant professor in Wilson Library.

Part I EVERYONE'S GUIDE TO THE WHOLE LIBRARY

Introduces characteristics of various types of libraries, services, and materials, and the principles behind the organization of information in libraries. Reveals various means of access to library resources—how to find out what is in journal literature, government publications, and other sources. This knowledge helps in using any library for any purpose. **See dates under Part II.**

Part II THE WHOLE LIBRARY IS MORE THAN THE SUM OF ITS PARTS

Building on the principles presented in Part I, this session introduces reference books and shows how resources are organized in various subjects. This knowledge helps you get right to the information you need, even if you don't know the subject well. This session can be a helpful "how to" if you have to write papers or investigate a topic in detail.

Fall Qtr
Winter Qtr
Spring Qtr

W—Oct 6, 13, 6:30-9, BlegH 360, Pankake
Th—Jan. 6, 13, 6:30-9, BlegH 360, Pankake
T—Apr. 5, 12, 6:30-9, BlegH 235, Pankake

Arts and Humanities

IC 0113 MUSIC: HOW TO LISTEN TO IT. No credit, \$41.

An introduction to basic musical elements and trends through listening to the music of great composers, such as Bach, Mozart, and Stravinsky. Various musical concepts, including notational symbols, structure, form, and style will be discussed. The development of music from a simple to a complex art form will be demonstrated by classroom performance and recordings.

Winter Spec Term Sec 1 **M**—7-9, Jan. 10-Feb. 28 (no class Feb. 21),
(7 meetings),
ScottH 19, Byrne
No late fee through Jan. 3

(Richard Byrne, assistant professor in the General College, is the director of music at the Cathedral of St. Paul)

IC 0144 THE ARTS OF CHINA. No credit, \$43.

An introduction to the arts of China is examined through ancient ceramic and ritual bronzes, early Buddhist sculpture, architecture, paintings, and prints. The history of Chinese art is discussed by way of objects shown in class and slide-illustrated presentations.

Winter Spec Term Sec 1 **W**—6:30-8:30, Jan. 12-Feb. 16
(6 meetings), JonesH 2, Poor
No late fee through Jan. 5

(Robert Poor is an associate professor of Art History at the University of Minnesota)

★IC 0162 INTRODUCTION TO WEAVING. No credit, \$43 plus \$5 course fee. Total \$48.

In this introduction to the gentle art of weaving, we explore basic weaving techniques and patterns while becoming familiar with table and floor looms and with different fibers. Expect to weave several samples. Attendance at the first meeting is mandatory. (Limited to 25)

Winter Spec Term Sec 1 **T**—7-9, Jan. 11-Feb. 15 (6
meetings), JonesH 4, Smits
No late fee through Jan. 4

(Anna Smits is an instructor in Art Education)

IC 0175 ONE HUNDRED YEARS OF THE AMERICAN NOVEL. No credit, \$68 each term.

A systematic overview of the American Novel from the haunted puritanism of Hawthorne to the frustrations of Hemingway provides an insight into the development of the novel in America. Through analysis of character, themes, symbols, and styles, we identify aspects that render these novels particularly American—i.e., how they reflect American ideals, character, and society. **Fall term:** Focuses on Hawthorne and Melville, essentially inner-oriented novelists, and concludes with Mark Twain. **Winter term:** Henry James, Edith Wharton, and Theodore Dreiser. **Spring term:** Willa Cather, F. Scott Fitzgerald, and Ernest Hemingway. A joint Continuing Education for Women/Extension Classes class)

Winter Spec Term Sec 2 **Th**—7-9, Jan. 6-Mar. 10
(10 meetings), FolH 302, Kheim
No late fee through Dec. 30

(Johanna Kheim has taught French and humanities at the University of Minnesota)

The Natural World

- ★**IC 0202 TAXIDERMY: MOUNTING A GAME BIRD.** No credit, (1.4 CEUs available), \$103 plus \$22 course fee. Total \$125.

Learn museum techniques in bird mounting from museum preparators. The course covers the historical development of taxidermy; museum and commercial taxidermy; state and federal laws governing taxidermy; taxidermy texts; and sources of taxidermy supplies. Each student has the opportunity to skin and mount a quail from a game farm. Two instructors will be at each session to insure personal student attention. The bird and all supplies are included in the cost of the course. Designed solely as an introduction to the basic techniques of taxidermy; skill as a professional taxidermist would require much more experience. (Offered in conjunction with the Science Museum of Minnesota and the Bell Museum of Natural History. Limited to 25)

Winter Spec Term Sec 1 **W**—6-10, Jan. 12-Feb. 23 (7 meetings), Science Museum of Minnesota, 30 E 10 St, St. Paul, Hadland, Kane

No late fee through Jan. 5

(Curtis Hadlund is a taxidermist-preparator at the Science Museum of Minnesota and Nan Kane is a taxidermist at the Bell Museum of Natural History)

- ★**IC 0209 THE ORIGIN AND EVOLUTION OF LIFE.** No credit, (2.1 CEUs available), \$43 plus \$11 course fee. Total \$54.

The diversity of life on our small planet is staggering. When and how did life on earth originate, and how have its forms become so diverse, and how have species become adapted to their environments? This course begins with an outline of how scientists try to answer these questions, followed by a discussion of theories and evidence for the origin of life on earth. Four lectures (supplemented by films, color slides, and living organisms) approach the theory of evolution by natural selection and its impact on modern biology. Three half-day field trips (including the Minneapolis Zoo and Como Conservatory). An advanced background in biology is not necessary. (Offered in cooperation with the Bell Museum of Natural History. Limited to 25)

Winter Spec Term Sec 1 **T**—7-9, Jan. 11-Feb. 15 (6 meetings plus field trips), BellMus 175, Clayton, Goodman

No late fee through Jan. 4

(Dale Clayton is a graduate student in Entomology, Fisheries, and Wildlife and has participated in research on birds, bats, and insects. Billy Goodman is a graduate student in Ecology and Behavioral Biology with research experience in birds and plants)

- ★**IC 0210 ANIMAL BEHAVIOR.** No credit, (1.8 CEUs available), \$43 plus \$6 course fee. Total \$49.

The behavior of animals, especially those living in groups, is much more complex than most people realize. In this course we will discuss the elaborate societies of bees, ants, jays, baboons, lions, elephants, acorn woodpeckers, and many other animals. Emphasis will be placed on why animals live in groups and how they

Winter

communicate with each other. Several films will be used to supplement the lectures. Animals which can be observed in Minnesota will often be used as examples, and there will be observations of particular species on two Saturday morning field trips. (Offered in cooperation with the Bell Museum of Natural History. Limited to 35)

Winter Spec Term Sec 1 **Th**—7-9, Jan. 13-Feb. 17 (6 meetings plus field trips) BellMus 311 (use SW entrance), Blockstein

No late fee through Jan. 6

(David Blockstein is an advanced graduate student in the Ecology Department)

★IC 0224 WINTER ECOLOGY IN MINNESOTA. No credit, (3.0 CEUs available), \$43 plus \$26 course fee. Total \$69.

Combines lectures and field trips to examine the kinds of problems a Minnesota winter creates for living organisms and some of the ways in which these problems are overcome. Two Saturday half-day local field trips and one weekend field trip (**Feb. 12-13**) to Itasca State Park (cost extra) will give the student an opportunity to observe characteristics of snow and ice; to identify winter birds, plants, and animal tracks; and to examine mid-winter activities of plants and animals. (Offered in cooperation with the Bell Museum of Natural History. Limited to 25)

Winter Spec Term Sec 1 **W**—7-9, Jan. 19-Feb. 23 (6 meetings plus 3 field trips), BellMus 311 (use SW entrance), Miller

No late fee through Jan. 12

(Jake Miller is a graduate student in the Department of Ecology and Behavioral Biology)

★IC 0225 ADVANCED WINTER ECOLOGY: A FIELD COURSE. No credit, (2.6 CEUs available), \$43 plus \$11 course fee. Total \$54.

In this continuation of IC 0224, students further explore adaptations of Minnesota plants and wildlife by means of firsthand experience in the field. After one introductory lecture meeting and two all-day Saturday local field trips (**Jan. 8, 15**), the field work culminates with a weekend excursion to Itasca State Park (**cost extra**) on **Jan. 22, 23**. Experimental and observational techniques are used during these trips. (Offered in cooperation with the Bell Museum of Natural History. Limited to 25)

Winter Spec Term Sec 1 **W**—7-9, Jan. 5 (1 meeting plus 3 field trips), BellMus 311, (Use SW entrance), Miller

No late fee through Dec. 29

(Jake Miller has taught the introductory Winter Ecology course for several years and is an advanced graduate student in Ecology and Behavioral Biology)

★IC 0242 VEGETABLE GARDEN PLANNING AND PLANTING. No credit, \$50.

Spring is the season when garden planning shifts into high gear. This course is for the home gardener interested in planting vegetables and bedding plants. We'll practice planting and transplanting seedlings and discuss soil preparation, the use of organic and conventional fertilizers and pest controls, staking, mulching, and other preparations for a fruitful summer. Materials are provided. (Limited to 30)

Winter Spec Term Sec 1 **T**—7-9, Jan. 18, 25 (2 meetings) EBCEC 52, StP Campus, Read

7-9, Mar. 29, Apr. 5, 12, 19 (4 meetings)

Greenhouses, StP Campus

No late fee through Jan. 11

(Paul Read is a professor in the Horticulture Science department)

Winter

IC 0245 LANDSCAPING THE MINNESOTA HOME GROUNDS. No credit, \$35.

Attention is focused on using plants to beautify our Minnesota yards and grounds. Special help for the interested homeowner or business owner/manager to review critically the landscape of home or business and to plan a design to improve the grounds. Requirements for maintaining beauty in the yard will also be examined. For those who enjoy the art of horticulture. **Lectures:** The Art of Landscape Gardening; Designing with Plants; Designing Your Own Yard; Workshop: Maintaining Beauty in Your Yard.

Winter Spec Term Sec 1 **W**—6:30-8:30, Mar. 2-30, (5 meetings),
EBCEC 52, StP Campus, Ray
No late fee through Feb. 23

(Glenn Ray is executive secretary of the Minnesota Horticultural Society)

IC 0251 ENERGY CONSERVATION, SUPER INSULATION, AND SOLAR ENERGY (FOR NEW HOMES). No credit, \$57.

Topics include understanding residential energy use and economics. Energy use in conventional, dome and earth-sheltered homes. Super insulation for attics, walls and foundations, high efficiency heating systems, and the integration of passive and active solar systems into home designs. For people designing the energy systems of their new homes.

Winter Spec Term Sec 1 **T**—7-9:30, Jan. 11-Mar. 1 (8 meetings),
AnScVM 125,
StP Campus, Thayer
No late fee through Jan. 4

(Darryl Thayer, residential energy auditor, solar consultant and contractor)

★IC 0255 RESIDENTIAL ENERGY DESIGN: BUS TOURS. No credit, \$22.

Each term a bus tour visits energy-efficient new and existing homes in the Twin Cities and talks with homeowners, architects, and contractors. The tour covers super-insulated and earth-sheltered housing, energy-efficient heating systems and appliances, passive and active solar energy, retrofitting, window insulation, and current federal and state energy tax credits. (Limited to 40)

Winter Spec Term Sec 2 **Sa**—Jan. 15,
9 a.m.-4, HckrH 210, StP Campus, Getty
No late fee through Jan. 7

(Scott Getty is the director of Ouroboros South, the University of Minnesota Alternative Energy House)

IC 0256 EXISTING HOMES MADE ENERGY EFFICIENT. No credit, \$34 plus \$7 course fee. Total \$41.

A survey of existing housing design concepts. Includes experts from the housing industry discussing super-insulated retrofitting, active and passive solar energy, energy-efficient furnaces and boilers, conserving domestic hot water, energy-conscious appliances, window insulation, and current federal and state energy tax credits. Guest speakers from private businesses, organizations, and state agencies. Concludes with a Saturday tour of energy-efficient retrofitted houses. (A joint Extension Classes/Science Museum of Minnesota class)

Winter Spec Term Sec 1 **T**—7-9:30, Jan. 18-Feb. 15 (5 meetings plus
bus tour), MinMet 120, Getty
No late fee through Jan. 11

(Scott Getty is the director of Ouroboros South, the University of Minnesota Alternative Energy House)

Winter

- ★**IC 0274 NATURE PHOTOGRAPHY, ART, AND TECHNIQUE.** No credit, (2.4 CEUs available), \$43 plus \$11 course fee. Total \$54.

Covers a wide variety of techniques used in photographing landscapes, plants, birds, mammals, and insects. Those who enroll should own or have access to a 35 mm camera and have some experience using it. Methods discussed during lecture will be practiced during three Saturday morning field trips. Topics will include bird photography without a telephoto lens, "wet-belly" photography, effective composition, and film and equipment choice. A major theme is how understanding natural history can improve your chances of successfully photographing plants and animals. Designed for those with natural history or scientific interests who want to come home with striking, rather than ineffective, photographs. There will be three Saturday morning field trips on **Jan. 22, 29, and Feb. 5.** (Offered in cooperation with the Bell Museum of Natural History. Limited to 25)

Winter Spec Term Sec 1 **M**—7-9, Jan. 10-Feb. 14 (6 meetings plus field trips), BellMus 311 (use SW entrance), Edinger
No late fee through Jan. 3

(Bruce Edinger is a graduate student in the Department of Ecology and Behavioral Biology and a nature photographer)

- ★**IC 0275 ADVANCED FIELD AND NATURE PHOTOGRAPHY.** No credit, (2.4 CEUs available), \$43 plus \$11 course fee. Total \$54.

A follow-up for IC 0274; contact the instructor if you have not yet taken that course. Students should have access to a 35mm SLR camera and considerable experience using it. This is a course for advanced nature photographers, field biologists, and naturalists who wish to master more difficult techniques. Sessions include work with near-macro and macro-photography, composition in color and black and white, multiple electronic flash and fill-in flash, blind design and construction, and studio set-ups. Two final periods are spent in the darkroom where students process their own work. About ten hours of outside photo work is needed during the six-week period. Three half-day field trips are held (dates listed below). (Offered in cooperation with the Bell Museum of Natural History. Limited to 25)

Winter Spec Term Sec 1 **W**—7-9, Jan. 19, 26, Feb. 2, 9, 16, 23 (6 meetings plus field trips on Jan. 23, 30, Feb. 6), BellMus 175 (use SW entrance), Edinger
No late fee through Jan. 12

(Bruce Edinger is an experienced nature photographer and an advanced graduate student in Ecology and Behavioral Biology)

- ★**IC 0277 NATURAL HISTORY DRAWING.** No credit, (2.2 CEUs available), \$53 plus \$7 course fee. Total \$60.

Designed to increase the student's understanding and appreciation of nature and art through the drawing of natural objects. Each session begins with a brief introductory lecture followed by a drawing session with informal discussion and critique. Natural history specimens will be the subjects of a series of classically oriented drawing exercises. The museum's exhibits and collections will serve as a rich source of subject material. At every opportunity, the natural history of the specimen at hand will be discussed. Drawings will be presented as a means of both exploring and describing nature. Students will need to purchase some simple and relatively inexpensive drawing materials. Two Saturday morning field trips to the Como Park Conservatory and the Minnesota Zoo. (Offered in cooperation with the Bell Museum of Natural History. Limited to 25)

Winter Spec Term Sec 1 **T**—7-9, Feb. 1-Mar. 22 (8 meetings plus field trips), BellMus 311 (use SW entrance), Luce
No late fee through Jan. 31

(Don Luce is a scientific illustrator and exhibit designer at the Bell Museum of Natural History)

Winter

IC 0281 WINTER BACKPACKING AND CROSS COUNTRY SKIING. No credit, \$35 plus \$25 special fee. Total \$60.

Experience a whole new Minnesota during a weekend camping trip in a nearby forest. Three evening sessions introduce participants to proper equipment and clothing, understanding the winter environment, and developing a positive mental attitude about winter. Sessions also cover ski travel techniques, treating cold injuries, survival skills, and minimizing your impact on the environment. **The overnight weekend field trip, Jan. 22-23**, includes campsite selection, building snow shelters, cooking, and sleeping warmly. Carpools will be arranged and we will help each participant get clothing, equipment, and food for the trip.

Winter Spec Term Sec 1 W—7-10, Jan. 12

M—7-10, Jan. 17

W—7-10, Jan. 19

(3 meetings plus field trip), EBCEC 52,

StP Campus, Kneeland

No late fee through Jan. 5

(Tim Kneeland is the director of the Institute for Survival Education and has 17 years experience in the field)

IC 0295 SAILING: THE ART AND PRACTICE OF SAILBOAT CRUISING. No credit, \$54.

Designed to acquaint the small boat sailor with the special challenges and opportunities of chartering or owning a cruising sailboat. Will emphasize the "how to" aspects of boat handling and safety, charts and piloting, weather and storms, gear and provisioning, and the differences between small boats and those suitable for cruising on the Great Lakes or coastal waters.

Winter Spec Term Sec 1 W—7-9, Jan. 26-Mar. 16 (8 meetings),

ClOff B30, StP Campus, Bodley

No late fee through Jan. 19

(James W. Bodley, Professor of Biochemistry, has 20 years of sailing experience, the last seven on Lake Superior)

Society, Behavior, and Culture

★IC 0323 POLITICAL CARTOONING. No credit, \$52.

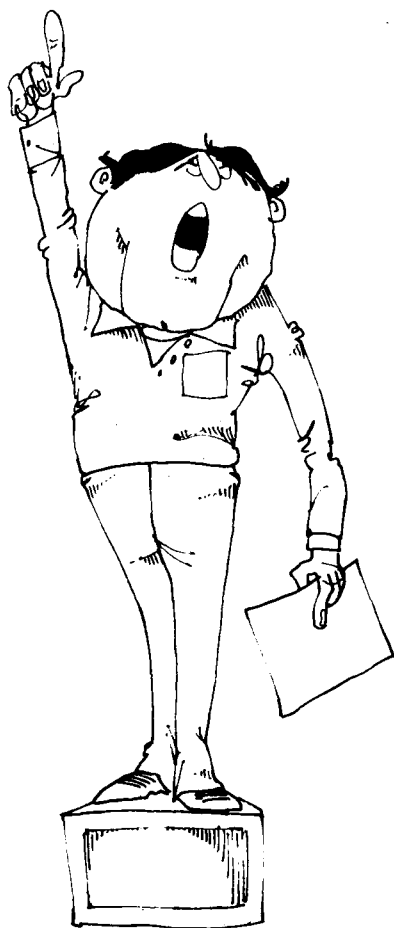
A critical and intelligent look into the artistic, communicative and sociopolitical dimension of political cartooning. Shows the student step by step how to produce a political cartoon—from developing an idea to drawing the finished cartoon—and covers the finer aspects of caricature, humor formulas, drafting materials, and techniques and marketing. The student will be given the opportunity to cultivate an active appreciation of the many values of this popular medium and to attain an informed contextual basis upon which to look critically and somewhat expertly at the political cartoons he or she encounters in the media. Students must supply their own drawing materials (expense, \$6 to \$10). (Limited to 25)

Winter Spec Term Sec 1 T—7-9, Jan. 11-Feb. 15 (6 meetings),

Arch 20, Wagner

No late fee through Jan. 4

(Pete Wagner is an award-winning political cartoonist, formerly of the Minnesota Daily and the Madison Press Connection staffs, published in Time, the Washington Post, and over 300 college papers)



IC 0332 EFFECTIVE LOBBYING. No credit, \$33.

Provides practical hints on how to be influential in shaping public policy with specific reference to Minnesota. Sessions focus on four main areas: legislative decision making, lobbying, campaigning, and public opinion. Topics include legislative strategy and timing, lobbying techniques, testifying at hearings, helping choose candidates, campaign assistance, regulation of lobbyists and political contributions, researching public opinion, and becoming an opinion leader. (A joint Extension Classes/Continuing Education for Women class)

Winter Spec Term - Sec 1 T--7-9, Feb. 8-Mar. 1
(4 meetings), SocSci 1383, Backstrom
No late fee through Feb. 1

(Charles Backstrom is a professor in the Department of Political Science)

Winter

Personal Growth and Survival Skills

★IC 0416 EFFECTIVE TIME MANAGEMENT. No credit, \$34.

There is an old saying, "If you want something done, ask a busy person to do it." That busiest person is an efficient manager of time. Learn the time management "tricks" that work for busy people. Discover new freedom through management of your total personal-work time. (Limited to 30)

Winter Spec Term Sec 1 **M**—6:30-8:30, Jan. 10-31 (4 meetings),

FordH 70, Kroll

No late fee through Jan. 3

(Patrick Kroll is an assistant professor in the Science, Business, and Mathematics division of the General College)

IC 0439 CREATIVE WRITING. No credit, \$43.

A course for those interested in writing plays, poetry, novels, or other forms of fiction. It deals with methods to tap the creative process, imagination, and ways to surround ourselves with an environment to enhance our writing.

Winter Spec Term Sec 1 **T**—7-9, Jan. 11-Feb. 15 (6 meetings),

FordH 60, Balfour

No late fee through Jan. 4

(Conrad Balfour is an instructor in the General College)

★IC 0440 HOW TO MARKET YOUR PHOTOGRAPHS. No credit, \$36.

Taught by free lance photographer Rohn Engh, this course tells you what you need to know to sell your photos, and how to start up a photo marketing business. The difference between a photograph and a marketable photograph is thoroughly discussed. This is a marketing course and there is little emphasis on picture taking itself; participants should already have knowledge of how to take a good photograph. No camera is necessary. (Limited to 50)

Winter Spec Term Sec 2 **WTh**—7-10, Jan. 19, 20 (2 meetings),

EBCEC 62, StP Campus, Engh

No late fee through Jan. 12

(Rohn Engh is the author of Sell and Re-Sell Your Photos)

IC 0442 PUBLICITY FOR COMMUNITY ORGANIZATIONS. No credit, \$33.

Your organization has planned a special event and you are in charge of publicity. What do you do? Learn the dynamics of working with the media—what publicity can and cannot do. Especially for community organizations and nonprofit groups who have little budget for publicity. Learn how to develop a publicity plan; clarify your message; work with radio and television; write public service spots; write effective press releases and lead paragraphs, and build working relationships with newsmen; use publicity photos, press conferences, on-site coverage. The dos and don'ts of publicity. (A joint Extension Classes/Continuing Education for Women class)

Winter Spec Term Sec 1 **Th**—7-9, Jan. 13-Feb. 10

(5 meetings), LindH 203

No late fee through Jan. 6

Winter

★IC 0531 YOGA: PRACTICE AND PHILOSOPHY. No credit, \$49.

The Yoga tradition, codified by the Indian sage Patanjali, is a systematic method of self-unfoldment. Yoga practices include the careful observation and gradual mastery of elements of the personality; body movement and posture, breathing, physical and mental relaxation, and the nature of mind and consciousness. Course will give beginning practices in physical yoga and meditation; lecture on history and philosophical concepts. (Limited to 30)

Winter Spec Term Sec 1 M—6:30-8:30, Jan. 10-Feb. 14, (6 meetings),
NCE 229, Sovik
No late fee through Jan. 3

(Rolf E. Sovik is executive director of the Center for Higher Consciousness and has an advanced teacher certification from the Himalayan Institute Teachers' Association)

IC 0571 INDIVIDUAL AND FAMILY BUDGET PLANNING. No credit, \$33. (Second member of household, \$18)

Learn to develop and manage your personal or family budget. You will acquire—on a basic level—the specific skills and abilities to use credit wisely, discriminate between your needs and wants in spending, set financial goals and develop contingency savings funds. Emphasis is on experiential learning. The budgeting experiences which you participate in and out of the classroom are designed to become part of your lifestyle immediately. **Confidentiality will be maintained throughout the course.** Materials will be provided at the first class meeting; no other textbook purchase is necessary. Class sessions vary in length from 1 to 2½ hours. The first session will be one hour in length.

Winter Spec Term Sec 1 T—6:30-8:30, Feb. 1-22
(4 meetings), FordH 40, Olson
No late fee through Jan. 25

(Carol Olson is the director of the Department of Community Programs, Continuing Education and Extension at the University of Minnesota)

IC 0572 BASIC INCOME TAXATION. No credit, \$42.

A guide through the morass of federal and state income tax law, for persons with no formal training in tax law. We'll outline the laws and translate the terminology into understandable terms. Basic concepts of computing taxable income will be covered, as will tax aspects of small investments and elements of planning to minimize taxes in common transactions. Course does not cover estate, gift or inheritance taxation.

Winter Spec Term Sec 1 M—7-9, Jan. 10-Feb. 14 (6 meetings),
SmithH 111, Erhart
No late fee through Jan. 3

(John Erhart is an attorney practicing in the area of taxation)

★IC 0590 RAPID READING AND COMPREHENSION. No credit, \$43.

For persons with average to good reading comprehension who want to increase their reading speed and efficiency. Lectures, demonstrations, and exercises stress changing old reading habits and offer practical tips for self improvement. For best results, participants should be prepared to spend some time every day reading and doing exercises. (Limited to 20)

Winter Spec Term Sec 1 W—7-9, Jan. 12-Feb. 16 (6 meetings),
NichH 201, Rosenberg
No late fee through Jan. 5

(Elizabeth Rosenberg is a teaching associate in General College)

Arts and Humanities

★IC 0107 PHOTO WORKSHOP II. No credit, \$38 plus \$6 course fee. Total \$44.

A five-week exploration of more advanced photographic processes. An intermediate course requiring some previous darkroom experience. Includes such topics as color slide processing, Kodalith film, and various non-silver processes, as well as work with black and white developing and printing. (Limited to 25)

Spring Spec Term Sec 1 Sa—1-3:30, Apr. 2-30
(5 meetings),
MacP 5, Millikan
No late fee through Mar. 25

(Jeff Millikan is a lecturer in the General College)

★IC 0109 ADVANCED COLOR PHOTOGRAPHY. No credit, \$60 plus \$20 course fee. Total \$80.

A workshop course in which the student participates in supervised photographic projects. Course includes lecture demonstrations, field trips, and attention to such subjects as color portraiture, color experiments, color printing, and special problems. Student must have a 35 mm camera and should have some basic familiarity with color photography. (Limited to 30)

Spring Spec Term Sec 1 T—6:30-9, April 5-26,
May 3-24 (8 meetings),
AgEng 102, StP Campus, Webb
No late fee through March 29

IC 0114 SAD MOVIES MAKE ME CRY: A GUIDE TO FILMS THAT TOUCH OUR LIVES.
No credit, \$44.

When was the last time you cried, or cheered, or clapped, or were otherwise caught up emotionally while watching a film? What power do some films have to touch our lives in a deeply personal way? We'll seek some answers to these questions by studying representative films that offer audiences characters we can identify with, conflicts that engage us on a personal and emotional level, and stories that challenge old assumptions and inspire us to consider new ways of relating to others. A film will be viewed in each class, and students can expect spirited discussion after each film screening. One class session will be devoted to discussion of a film currently showing in the Twin Cities.

Spring Spec Term Sec 1 T—6:30-9, April 5-May 3 (5 meetings), JonesH 11,
Yahnke
No late fee through March 29

(Robert Yahnke is an assistant professor in the Arts, Communication and Philosophy division of the General College)

IC 0118 DANCE: CLUES AND VIEWS. No credit, \$53.

Addresses frequently voiced questions about dance performances such as "What does it mean?" and "What am I supposed to get out of this?"—not by answering for the participants, but by providing clues and pointers on how to approach viewing dance. Two area dancers lead the class giving insiders' views on how dancers work and how dances are made. Attendance at three dance performances (one modern

Spring

and one ballet company on the Northrop Auditorium series and one local dance company) preceded by lectures, readings, demonstrations, and optional dance class observations, and followed by post-performance discussion. **Tuition does not include cost of dance tickets.**

Spring Spec Term Sec 1 **Th**—8-9:30, Apr. 7-May 28
(4 meetings plus 3 performances),
JonesH 10, Bonsignore, Savino
No late fee through Mar. 31

(Judith Bonsignore is an instructor in Dance at the University and at the Ozone Dance School. Jo Savino is also an instructor in Dance and director of the Classical Ballet Academy of Minnesota and the St. Paul City Ballet)

IC 0150 ARCHITECTURE AND MINNESOTA. No credit, \$33 plus \$5 course fee. Total \$38.

An introduction to the architecture of Minnesota, the past and present. The course looks at the interaction of the architect with other groups and forces shaping the built environment. The development of architecture in Minnesota is investigated from the earliest pre-historic builders to the present "post-modern" developments. Stylistic trends and developments are related to the scope of international architecture and the architectural history of the United States. The historic preservation process in the state and nation is also examined, as well as the effect of the aesthetics of design and color on our daily lives. A Saturday walking tour will be arranged.

Spring Spec Term Sec 1 **Th**—7-9, Apr. 14-May 5 (4 meetings),
Arch 30, Ohlhausen
No late fee through April 7

(Marcia Ohlhausen is a curator in the School of Architecture and Landscape Architecture at the University)

★IC 0165 PAINTING IN WATERCOLOR. No credit, \$48 (cost of materials extra)

An introductory course in watercolor painting. Discussion of materials, paints, papers, brushes, and their use; slide-illustrated lectures and demonstrations of watercolor techniques—washes, textural effects, use of color combinations, creating moods in painting. Painting sessions with individual attention given to encourage and develop creativity. Individual assistance and group critique. (Limited to 25)

Spring Spec Term Sec 1 **W**—7-9:30, Apr. 6-May 11 (6 meetings),
WullH 120, Netz
No late fee through Mar. 30

(Marija Skutans Netz is an instructor in Art Education and a free lance water-colorist)

IC 0175 ONE HUNDRED YEARS OF THE AMERICAN NOVEL. No credit, \$68 each term.

A systematic overview of the American Novel from the haunted puritanism of Hawthorne to the frustrations of Hemingway provides an insight into the development of the novel in America. Through analysis of character, themes, symbols, and styles, we identify aspects that render these novels particularly American—i. e., how they reflect American ideals, character, and society. **Fall term:** Focuses on Hawthorne and Melville, essentially inner-oriented novelists, and concludes with Mark Twain. **Winter term:** Henry James, Edith Wharton, and Theodore Dreiser. **Spring term:** Willa Cather, F. Scott Fitzgerald, and Ernest Hemingway. A joint Continuing Education for Women/Extension Classes class)

Spring Spec Term Sec 3 **Th**—7-9, Mar. 31-June 2
(10 meetings), FolH 107, Kheim
No late fee through Mar. 24

(Johanna Kheim has taught French and humanities at the University of Minnesota)

Spring

IC 0181 THE POSTCARD AS COLLECTABLE: HISTORY AND VISUAL IMAGE. No credit, \$29

Collecting postcards, a popular pastime in the early twentieth century, is once again returning to popularity. Many antique and modern postcards are very collectable, some selling for over \$500 each. This course consists of lectures and discussions by five of the area's leading postcard authorities on all aspects of postcards and postcard collecting. Opportunity will be provided for evaluation and discussion of cards brought to class by students.

Spring Spec Term Sec 1 **Th**—6:30-8:30, Apr. 7-21 (3 meetings),
Arch 20, Husom
No late fee through Mar. 31

(David Husom, assistant professor of Photography, MacPhail Center for the Arts, is an avid postcard collector and author of postcard articles)

IC 0183 ANTIQUES: PRINCIPLES OF COLLECTING. No credit, \$42.

Presents basic information necessary on what, where, and how to collect. In addition to increasing your knowledge of organizing, insuring, and using a collection, you learn how to "deal" with dealers. The class discusses antiques through slide-illustrated lectures, examines antique objects from the Goldstein Collection, and identifies objects class participants bring in. (A joint Extension Classes/Continuing Education for Women class)

Spring Spec Term Sec 1 **W**—6:30-8:30, Apr. 6-May 11 (6 meetings),
McNH 33, St. Paul Campus, Blade
No late fee through Mar. 30

(Timothy Blade is a Ph.D. in Art History and is Curator of Decorative Arts in the Goldstein Gallery at the University of Minnesota)

IC 0186 CREATIVE BOOKBINDING. No credit, \$50.

An opportunity to learn how to preserve some personal business or world history by binding significant issues of magazines, newsletters, family photographs, important papers, or pages for a book. Designed for beginners to learn basic techniques for hard-cover and Japanese binding of books. Traditional method of sewing on tapes and raised cord will be demonstrated. Each student will have the opportunity to make two books as well as designing decorative end-papers by marbelizing and printing techniques (equipment and some supplies will be furnished).

Spring Spec Term Sec 1 **W**—6:30-8:30, Apr. 6-May 25 (8 sessions),
WullH 220, Olson
No late fee through Mar. 30

(George Olson is a professor in the Art Education Program)

The Natural World

***IC 0201 MINNESOTA PLANT FAMILIES.** No credit, (2.1 CEUs available), \$43 plus \$11 course fee. Total \$54.

There is a vast variety of plants in our state, from beautiful wild flowers of the woods and prairies to the inconspicuous flowers found on trees and grasses and sedges. Each plant is uniquely adapted to life, and goes about the business of survival here in interesting, and often quite surprising ways. Through the use of live plants in six lecture/discussion sessions and three half-day field trips (May 7 to Allison Savannah; May 14 to the Landscape Arboretum; May 21 to Wolsfeld Woods), the class explores patterns of pollination, habitat, and seed dispersal in the major groups of higher

Spring

plants in Minnesota. (Offered in cooperation with the Bell Museum of Natural History. Limited to 25)

Spring Spec Term Sec 1 **M**—7-9, Apr. 18-May 23
(6 meetings plus field trips), BioSci 176
StP Campus, Van't Hof
No late fee through Apr. 11

(Heidi Van't Hof is a graduate student in Botany; she is active in the Minnesota Native Plant Society)

★IC 0204 MINNESOTA ECOLOGY: HUMAN IMPACT. No credit, (3.6 CEUs available), \$43 plus \$34 course fee. Total \$77.

The present Minnesota landscape reflects the influence of climatic, geologic, and biologic forces acting over millions of years. Humans are the most recent and perhaps most "effective" shapers of this landscape. Through lectures, slides, films, and field trips students study the role of humans in determining the distribution and abundance of plant and animal species in Minnesota and the character of its landscape. Students consider the influence of humans from their first appearance in North America thousands of years ago through the first American settlers of the 1800s up to the present. Specific topics covered include species extinctions and introductions, logging, fire, and acid rain. No previous background in ecology is required as lectures include a discussion of relevant ecological principles such as nutrient cycling, succession, energy flow, and population interactions. Three field trips are planned for the course including all-day Saturday trips to Ordway Prairie and Nerstrand Woods, and an overnight trip to Itasca State Park (*dates to be announced*). (Offered in cooperation with the Bell Museum of Natural History. Limited to 25)

Spring Spec Term Sec 1 **T**—7-9, Apr. 19-May 24 (6 meetings and
3 field trips), Zoology 101B, Allison
No late fee through Apr. 12

(Taber Allison is a plant ecologist and an advanced graduate student in Ecology and Behavioral Biology)

★IC 0212 AMPHIBIANS AND REPTILES: AN INTRODUCTION TO HERPETOLOGY. No credit, (2.4 CEUs available), \$43 plus \$14 course fee. Total \$57.

Provides an introduction to the identification, behavior, and ecology of amphibians and reptiles. Lectures, slides, and films are used to illustrate the world-wide diversity of these fascinating animals. Topics covered include poisonous amphibians and reptiles, the social behavior of crocodiles, and the current controversy concerning warm-blooded dinosaurs. Breeding calls of resident frogs and toads will be learned, and identification of Minnesota species will be taught in the laboratory and field. A variety of herpetological field techniques will be presented during two Saturday (**Apr. 9, 16**) afternoon-evening and one all-day Saturday (**May 7**) field trips. (Offered in cooperation with the Bell Museum of Natural History. Limited to 25)

Spring Spec Term Sec 1 **M**—7-9, Mar. 28-May 2 (6 meetings plus
field trips) BellMus 311
(use SW entrance), Karns
No late fee through Mar. 21

(Daryl Karns is an advanced graduate student in the Department of Ecology and Behavioral Biology)

Spring

★IC 0222 IDENTIFYING BIRDS: AN INTRODUCTION TO ORNITHOLOGY. No credit, (3.0 CEUs available), \$43 plus \$23 course fee. Total \$66.

Combining classroom time with Saturday morning field trips, this course provides an opportunity for lab study and observation of birds in their natural habitat. The course is designed to help those who love birds learn to recognize and identify about 150 different species of Minnesota birds and to learn the general principles of field identification. Bird behavior and ecology will also be discussed. **Field trips:** *Saturday mornings* on Oct. 2, 23 in the fall sections; Apr. 23 and May 7, 14 in the spring sections. *All-day Saturday trips* to Hawk Ridge (Duluth) on Sept. 25 in the fall only; to Crex Meadows Wildlife Area (Wisconsin) on Oct. 16 in the fall, and April 9 in the spring. (Offered in cooperation with the Bell Museum of Natural History. Limited to 25)

Spring Spec Term Sec 3 **Th**—7-9, April 7-May 12 (6 meetings plus field trips), BellMus 311 (use SW entrance), Burns
See IC 0229
for an intermediate
course in Sec 4 **W**—7-9, April 6-May 11 (6 meetings plus
bird identification. field trips), BellMus 311 (use SW entrance),
Hamann
No late fee through Mar. 31

(Jeffrey Burns, Kimm Hamann, David Blockstein, and Bonita Eliason are graduate students in the Department of Ecology and Behavioral Biology)

IC 0223 WILD FLOWERS IN MINNESOTA. No credit, \$39 plus \$7 course fee. Total \$46.

For nature lovers, and those who want to develop a greater appreciation and enjoyment of wild flowers and plants in Minnesota. Learn to recognize family characteristics of groups of plants, their behavior and relationship. Opportunity for individual learning and expression, and may include photography, sketching, painting, or writing about plants; collecting insects or leaves. For those who enjoy a trek through the woods. (A joint Extension Classes/Continuing Education for Women class)

Spring Spec Term Sec 1 **W**—5:30-7:30, Apr. 13-May 18 (6 meetings including field trips), Phys 143, Buonocore
No late fee through Apr. 6

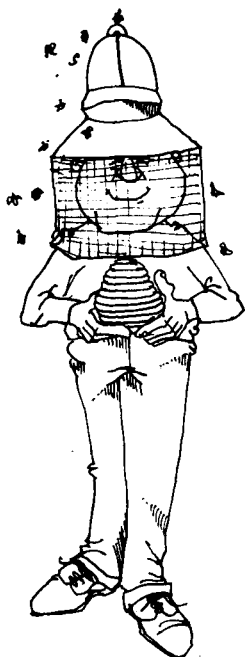
(Alicia Buonocore is an adjunct instructor in the General College)

★IC 0229 IDENTIFYING BIRDS: AN INTERMEDIATE COURSE. No credit, (3.3 CEUs available), \$30 plus \$37 course fee. Total \$67.

A continuation of IC 0222 (*Identifying Birds: An Introduction to Ornithology*), see listing above, and assumes that the student has acquired a basic understanding of the principles of ornithology. The intermediate course will familiarize the student with different species of migratory and breeding birds along with their behavior and ecology. Emphasis will be on experiences with birds in the wild, with more field trips and fewer lecture sessions than in the introductory course. There will be a weekend field trip (dates to be announced) to Itasca State Park, (cost extra), Friday evening to Sunday p.m.; plus 5 field trips on Saturdays, May 21-June 25. (Offered in cooperation with the Bell Museum of Natural History. Limited to 25)

Spring Spec Term Sec 1 **Th**—7-9, May 20, June 3, 17
(3 meetings plus 6 field trips),
BellMus 311 (use SW entrance), Burns
No late fee through May 13
Sec 2 **W**—7-9, May 18, June 1, 15 (3 meetings plus 6 field trips),
BellMus 311 (use SW entrance), Hamann
No late fee through May 11

(Jeffrey Burns and Kimm Hamann are graduate students in the Department of Ecology and Behavioral Biology)



IC 0248 HIVES AND HONEYBEES: AN INTRODUCTION TO BEEKEEPING. No credit, \$50 plus \$7 course fee. Total \$57.

A practical course in keeping honeybees for pleasure and profit. Lectures include biology and behavior of honeybees; diseases, pests, and predators; first steps in beekeeping, equipment, apiary site; preparing bees for winter; late winter and spring management; horizontal two-queen system; capturing a honey crop; the honey harvest; pollination and pesticides. Two half-day Saturday field demonstrations (**Apr. 16, May 14**) include package bees—how to install and manage; and how to divide colonies.

Spring Spec Term Sec 1 **M**—7-9:30, Apr. 4-May 9
(6 meetings), AlderH 310, StP Campus, Furgala
No late fee through Mar. 28

(Basil Furgala is a professor in Entomology, Fisheries, and Wildlife)

IC 0252 SOLAR ENERGY: DESIGN AND CONSTRUCTION FOR RESIDENCES. No credit, \$57.

Topics include the sun as an energy source, economics of solar energy. Passive solar designs, night insulation and sizing of thermal mass. Active solar systems: liquid and air, room heaters, solar water heaters and solar space heaters. Practical examples of both active and passive systems with construction details for the do-it-yourselfer and the solar consumer.

Spring Spec Term Sec 1 **T**—7-9:30, Apr. 5-May 24 (8 meetings)
ClaOff B45, StP Campus, Thayer
No late fee through Mar. 29

(Darryl Thayer, residential energy auditor, solar consultant and contractor)

Spring

IC 0254 SUPER-INSULATED AND OTHER ENERGY EFFICIENT NEW CONSTRUCTION.

No credit, \$34 plus \$7 course fee. Total \$41.

A survey of new housing design concepts. Each session includes experts from the housing industry discussing environmental design, climate orientation, earth-sheltered and super-insulated housing, active and passive solar energy, energy-efficient space and domestic hot water heating systems, heat exchangers and air quality, energy conserving appliances, financing new construction, and current federal and state energy tax credits. Guest speakers from private businesses, organizations, and state agencies. Each section concludes with a Saturday tour of energy-efficient demonstration houses. (A joint Extension Classes/Science Museum of Minnesota Class)

Spring Spec Term Sec 2 **T**—7-9:30, Apr. 5-May 3 (5 meetings plus field trip), Arch 30, Getty
No late fee through Mar. 29

(Scott Getty is the director of Ouroboros South, the University of Minnesota Alternative Energy House)

★IC 0255 RESIDENTIAL ENERGY DESIGN: BUS TOURS. No credit, \$22.

Each term a bus tour visits energy-efficient new and existing homes in the Twin Cities and talks with homeowners, architects, and contractors. The tour covers super-insulated and earth-sheltered housing, energy-efficient heating systems and appliances, passive and active solar energy, retrofitting, window insulation, and current federal and state energy tax credits. (Limited to 40)

Spring Spec Term Sec 3 **Sa**—Apr. 9,
9 a.m.-4, HckrH 210, StP Campus, Getty
No late fee through Apr. 1

(Scott Getty is the director of Ouroboros South, the University of Minnesota Alternative Energy House)

★IC 0263 MINNESOTA GEOLOGY: AN INTRODUCTION TO YOUR SURROUNDINGS. No credit, (3.3 CEUs available), \$43 plus \$30 course fee. Total \$73.

Despite its tame topography, Minnesota has had an active and varied geological history. There have been mountain ranges, inland seas, volcanoes, rifting events, and glaciers. A review of the evidence for these geologic events in lectures illustrated with slides, films, and maps. Appropriate rock and fossil material will be on hand for discussions. Three field trips will cover much of Minnesota's geologic past: a half-day local trip; (Apr. 9); one full-day trip to the southeast; (Apr. 23); and a two-day (overnight) trip to the North Shore (May 14, 15). (Offered in cooperation with the Bell Museum of Natural History. Limited to 25)

Spring Spec Term Sec 1 **W**—7-9, Apr. 6-May 11 (6 meetings plus field trips), FordH 185
No late fee through Mar. 30.

Spring

★**IC 0275 ADVANCED FIELD AND NATURE PHOTOGRAPHY.** No credit, (2.4 CEUs available), \$43 plus \$11 course fee. Total \$54.

A follow-up for IC 0274; contact the instructor if you have not yet taken that course. Students should have access to a 35mm SLR camera and considerable experience using it. This is a course for advanced nature photographers, field biologists, and naturalists who wish to master more difficult techniques. Sessions include work with near-macro and macro-photography, composition in color and black and white, multiple electronic flash and fill-in flash, blind design and construction, and studio set-ups. Two final periods are spent in the darkroom where students process their own work. About ten hours of outside photo work is needed during the six-week period. Three half-day field trips are held (dates listed below). (Offered in cooperation with the Bell Museum of Natural History. Limited to 25)

Spring Spec Term Sec 2 **M**—7-9, Apr. 11, 18, 25, May 2, 9, 16 (6 meetings plus field trips on Apr. 16, 23, 30),
BellMus 175 (use SW entrance), Edinger
No late fee through Apr. 4

(Bruce Edinger is an experienced nature photographer and an advanced graduate student in Ecology and Behavioral Biology)

IC 0280 RECREATION LAND ISSUES: A FORUM FOR LAYPERSONS AND PROFESSIONALS. No credit, \$57.

Professionals and concerned citizens are invited to analyze and debate current issues regarding the use of Minnesota's land and water for recreation. Issues include equity in the allocation of space to competing demands; accessibility; ongoing maintenance and control; funding; mixing uses; local interests vs. those of visitors; and other issues of special interest to the class. The classroom provides "neutral territory" for a deliberate, rational discussion.

Spring Spec Term Sec 1 **W**—7-9, April 6-May 11 (6 meetings plus an optional field trip if there is sufficient interest),
ClaOff B30, StP Campus, Merriam, Knopp
No late fee through Mar. 30

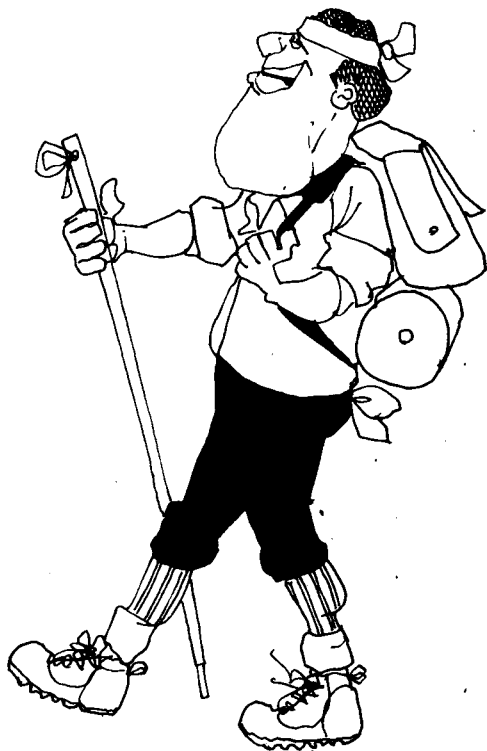
(Lawrence Merriam is a professor and Timothy Knopp is an associate professor in the College of Forestry, Recreation Resource Management)

IC 0288 WILDERNESS NAVIGATION. No credit, \$35 plus \$15 course fee. Total \$50.

Being able to pinpoint your position, determine a needed heading, select an appropriate route, and travel safely in an environmentally sound manner are skills all back-country and canoe users should strive to develop. This course covers the basics of compass use, topographic map interpretation, and position determination using angulation, triangulation, time and distance traveled, and landmark identification. Environmental impact will also be discussed. Participants will have the opportunity to put their skills into practice during a one-day Saturday, Apr. 9 field trip, 8 a.m.-6, to a nearby area. You will need to obtain a map and compass for the trip, but you should wait until the course begins before you make any purchases.

Spring Spec Term Sec 1 **W, Th**—7-10, April 6, 7 (2 meetings plus field trip), Arch 50, Kneeland
No late fee through March '30

(Tim Kneeland is the director of the Institute for Survival Education and has 17 years experience in the field)



IC 0289 • WILDERNESS TRAVEL AND CAMPING. No credit, \$35 plus \$25 course fee. Total \$60.

Before heading off for Quetico or other wildland areas, increase your wilderness skill level and equip yourself with the techniques to achieve complete wilderness self-reliance. Topics include the psychology and physiology of wildland travel, effects of temperature extremes, environmental injuries, clothing and equipment selection, shelter, nutrition and diet, impactless camping, and cross-country travel. The program emphasizes the need to adapt to a variety of conditions and circumstances and to be able to have a safe, enjoyable, and ethically sound experience. Participants will have the opportunity to put their skills to practice on a minimum impact overnight camping experience in a nearby wildland area, leaving Sat., Apr. 16 at 8 a.m., and returning Sunday at 6 p.m. We will help participants get clothing, food, and equipment for the trip.

Spring Spec Term Sec 1 **TTh**—7-10, Apr. 12, 14 (2 meetings plus field trip), Arch 50, Kneeland
No late fee through April 5

Spring

★IC 0292 WHITEWATER CANOEING. No credit, \$13 plus \$55 special fee. Total \$68.

Teaches the basics of whitewater canoeing. Class meetings prepare participants for two one-day excursions on rivers within driving distance from the Twin Cities. (The rivers used will depend on weather and water conditions.) Cost includes canoe rental. Participants should have some swimming and canoeing experience. If you've always wanted to experience the excitement of whitewater canoeing in a safe and ecological way, this course is for you! (Limited to 12)

Spring Spec Term Sec 1 **Th**—7-9, Apr. 14, 21 (2 meetings plus field trips), ClaOff B30, StP Campus
No late fee through Apr. 7

IC 0296 SAILING: MARINE NAVIGATION—COASTAL AND INLAND PILOTING. No credit, \$54.

A course for power boat and sailing enthusiasts who wish to learn the basics of inland and coastal navigation. Among the topics to be covered are plotting, dead reckoning, fixes, tides and currents, and rules of the road. Classes combine lectures with ample hands-on practice to allow refinement of navigational skills.

Spring Spec Term Sec 1 **T**—7-9, Apr. 5-May 24 (8 meetings),
EBCEC 155, StP Campus
No late fee through Mar. 29

Society, Behavior, and Culture

IC 0300 AGING PARENTS: COMMUNICATING AND UNDERSTANDING. No credit, \$29.

A lecture/discussion on the theories of aging, concerns and problems. How children relate to their parents and why we have trouble communicating with aging parents: normal sensory losses, attitudes, economic status, sexuality, family care, and nursing homes. A nurse will discuss health care and a social worker who works with the elderly will discuss programs and options available to families.

Spring Spec Term Sec 1 **Th**—7-10, Apr. 7, 14 (2 meetings),
FolH 104, Johnson
No late fee through Mar. 31

(Carol Johnson is coordinator of the Older Adult Program, Continuing Education and Extension, University of Minnesota)

IC 0379 HOMEFIRES: THE HISTORY OF THE SEARCH FOR BETTER WAYS TO HEAT AND LIGHT OUR HOMES. No credit, \$33.

Traces the changes in the fuels and technology of heating and lighting in the home from Colonial times to the mid-20th century. Slide presentations, discussions, and field trip emphasize the importance of artifacts—stoves, lamps, furnaces—as a key to understanding the evolution of our use of energy in the home.

Spring Spec Term Sec 1 **T**—7-9, May 10-24 (3 meetings plus field trip to be announced), FordH 60, Westbrook
No late fee through May 3

(Virginia Westbrook is a free lance consultant in history education with a special interest in the history of household technology)

Spring

IC 0394 ORIENTATION FOR TRAVELERS TO EUROPE. No credit, \$20.

Are you planning to travel to Europe in summer, 1983? Get more out of your trip by doing some advance planning. Learn all about essential and recommended travel documents, the latest ideas on how and what to pack, how the European train system works, accommodation options, off-the-beaten-track places to visit, and more. Learn, too, about how to be a traveler instead of a tourist. This all-day workshop is conducted by experienced staff of the International Study and Travel Center. (A joint ISTC/Extension Classes class)

Spring Spec Term Sec 1 **Sa**—8:30 a.m.-4, May 14 (1 meeting),
CMU Third Floor, Johnson
No late fee through May 6

(Stephen Johnson is associate director of the International Study and Travel Center)

Personal Growth and Survival Skills

IC 0435 POETRY WRITING. No credit, \$43.

The two primary goals of this course are to gain skills in self-expression and to foster an ongoing love affair with language. In a workshop format, students will discuss student writing and examples from small press publications. Forms of writing we pursue depend in part on student interest; but poetry, prose-poetry, and short poetic prose are stressed.

Spring Spec Term Sec 1 **M**—7-9, Apr. 11-May 16 (6 meetings),
JonesH 1, Shaw
No late fee through Apr. 4

(Mary Ellen Shaw is an instructor in General College and editor of Minnesota Literature Newsletter)

★IC 0440 HOW TO MARKET YOUR PHOTOGRAPHS. No credit, \$36.

Taught by free lance photographer Rohn Engh, this course tells you what you need to know to sell your photos, and how to start up a photo marketing business. The difference between a photograph and a marketable photograph is thoroughly discussed. This is a marketing course and there is little emphasis on picture taking itself; participants should already have knowledge of how to take a good photograph. No camera is necessary. (Limited to 50)

Spring Spec Term Sec 3 **ThF**—7-10, Apr. 7, 8 (2 meetings),
EBCEC 62, StP Campus, Engh
No late fee through Mar. 31

(Rohn Engh is the author of Sell and Re-Sell Your Photos)

★IC 0441 NEWSLETTER WORKSHOP: WRITING AND LAYOUT. No credit, \$38 each section.

Does your association, business, club, or organization issue a newsletter? Gain or improve your newsletter production skills by taking this workshop. Each section is four laboratory sessions of instruction and supervised practice. **Sections 1, 3—Writing:** How to write articles for your newsletter. Develop skills and techniques to write informative and interesting material for your publication. Setting up a schedule and deadlines. Importance of lead sentences and paragraphs. Sources of information for articles, writing good headlines, and the kinds of information best suited for your readership. **Sections 2, 4—Layout:** How to create a more effective and attractive newsletter with design and typography. Techniques of layout including various

Spring

formats; paper sizes; printing processes; press-on, photographic, and strike-on typesetting; art and photography; choosing type for legibility; keylining camera-ready copy, postal regulations, and working with printers. (Limited to 25)

- Spring Spec Term** Sec 3 **Writing** W—7-9, Apr. 6-27 (4 meetings),
MinMet 124
No late fee through Mar. 30
- Sec 4 **Layout** W—7-9, May 4-25 (4 meetings),
MinMet 124, Wilson (Limit 30)
No late fee through Apr. 27

★IC 0450 CAREER DECISIONS: STRATEGIES FOR CHANGE. No credit, \$43.

Take the first step toward assessing your career, your goals, and yourself in relation to your career. This course focuses on values, job satisfaction, job stress, skills analysis, and person-environment fit as key elements of the decision to stay where you are or make a change. Explores educational and training opportunities that are available. Interest testing included. Attention directed to learning ways to explore career alternatives and to "creative job-search" techniques. (Limited to 25)

- Spring Spec Term** Sec 1 **Th**—7-9, Apr. 5-May 10 (6 meetings),
PillsH 110, Peterson
No late fee through Mar. 29

(Susanne Peterson is a licensed psychologist on the staff of Extension Counseling)

★IC 0573 WILLS AND ESTATES: INFORMAL APPROACHES TO PEACE OF MIND. No credit, \$31.

Are you thinking about writing a will? Concerned that your estate be administered according to your wishes? This course will attempt to cut through the confusion which surrounds wills and probate and to clarify some of the issues and procedures involved. We will discuss the inheritance of property after death, the reasons for and legal requirements of wills, and the procedures involved in administering a decedent's estate. (Limited to 45)

- Spring Spec Term** Sec 1 **Sa**—10 a.m.-12, April 9-23
(3 meetings), NichH 109, Hower
No late fee through Apr. 1

(Dennis R. Hower is an associate professor in the General College and an attorney at law)

★IC 0576 FARM MANAGEMENT FOR THE ABSENTEE LANDOWNER. No credit, \$56.

Designed for the absentee landowner, persons considering purchase of a farm, or those who may some day inherit one. Course content provides up-to-date management information and techniques so that: (1) persons considering purchase or sale of a farm will make better informed decisions and (2) absentee landowners will be able to take a more active and better informed role in establishing cash and crop-share rental arrangements in working with their tenants. Sessions also include discussions of current crop production costs, income and estate taxes, choosing and working with the right tenant, buying and selling a farm, evaluating rental arrangements, and other selected topics. (Limited to 40)

- Spring Spec Term** Sec 1 **Th**—7-9:30, Apr. 7-May 26 (8 meetings),
ClaOff B35, StP Campus, Thomas, Hasbargen
No late fee through Mar. 31

(Kenneth H. Thomas is an Extension Economist in Farm Management in the Agricultural and Applied Economics Department; and Paul Hasbargen is a professor in Agriculture and Applied Economics)

IC 0577 GETTING STARTED IN PART-TIME FARMING. No credit, \$56.

For the person or family considering a move to the country with a possibility of part-time farming as a hobby or supplemental income source. Topics include the pros and cons of a part-time farming lifestyle; tax management and the potential tax savings of owning one's own business, including what to do from a tax standpoint when purchasing a farm. Enterprise selection—the relative economic merits of various crop and livestock enterprises; where to go for professional help and sources of information of use in getting started as a part-time farmer. Marketing problems and potentials. The economics of purchasing machinery versus hiring others to work for you. The legal side of farming; insurance, finance, estate planning considerations. What to look for in buying farm property, inflation considerations, location, soil types and determining your maximum bid price for land.

Spring Spec Term Sec 1 **Th**—7-9:30, Apr. 7-May 26 (8 meetings),
ClaOff B36, StP Campus, Fuller, Benson
No late fee through Mar. 31

(Earl Fuller and Fred Benson are Extension Economists in Farm Management in the Agricultural and Applied Economics Department)

IC 0578 RECLAIMING A PERSONAL PAST: WRITING THE HISTORY OF YOUR FAMILY.

No credit, \$33 each section.

Details about the lives of family members and circumstances in which they lived can provide a fuller, more rewarding acquaintance with ancestors who would otherwise remain strangers. This course provides direction for individuals who want to prepare a personal history of their families that goes beyond the skeletal information typically included in genealogical compilations. **Section 1:** Concentration on locating and using sources of information (including documentary sources inside and outside the home and conducting oral history interviews); relating personal experiences to broader historical trends and events; and physical preservation of family photographs and documents. **Section 2:** Concentration on writing aspects. Topics include how to begin; organization and structure; describing characters and setting; how to "make it live"; and mechanics of publishing a family history. Emphasis on analysis of examples. The instructor will be available to read and evaluate class members' writings if desired.

Spring Spec Term Sec 1 **Th**—7-9, Apr. 7-28 (4 meetings),
Arch 25, Klaassen
No late fee through Mar. 31

Sec 2 **Th**—7-9, May 5-26 (4 meetings),
JonesH 2, Shreve
No late fee through Apr. 28

(Dave Klaassen is curator, Social Welfare History Archives at the University; Susan Shreve is an editor at Catholic Digest)

Spring

IC 0582 FRENCH FOR TRAVELERS. No credit, \$38.

A survival course for those with no previous knowledge of French. Will provide you with the basic French vocabulary necessary for coping with these everyday travel situations: changing money, obtaining train tickets and information, renting hotel rooms, shopping, ordering meals, asking directions, understanding telephones, post offices and public transportation systems. Increased knowledge of French and of French culture will help you travel more adventurously and more economically. (A joint Extension Classes/Continuing Education for Women class)

Spring Spec Term Sec 1 **W**—7-8:40, Mar. 30-May 4 (6 meetings),

Arch 20

No late fee through Mar. 23

IC 0583 GERMAN FOR TRAVELERS. No credit, \$38.

A survival course for those with no previous knowledge of German. Will provide you with the basic German vocabulary necessary for coping with everyday travel situations: changing money, obtaining train tickets and information, renting hotel rooms, shopping, ordering meals, asking directions, understanding telephones, post offices, and public transportation systems. Increased knowledge of German and of German culture will help you travel more adventurously and more economically. (A joint Extension Classes/Continuing Education for Women class)

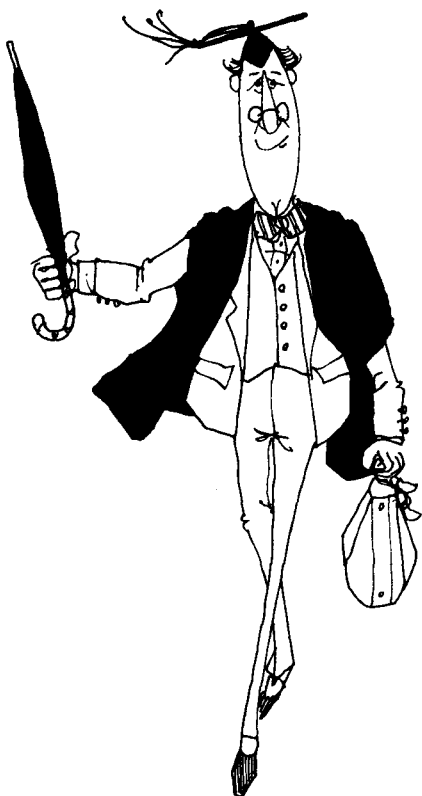
Spring Spec Term Sec 1 **W**—7-8:40, Apr. 6-May 11 (6 meetings),

FordH 60, Schulte-Sasse

No late fee through Mar. 30

(Linda Schulte-Sasse is a doctoral candidate in German and has traveled and lived in German-speaking countries)

Lifetime Adventures in Learning



The Lifetime Adventures in Learning Program is co-sponsored by the Older Adult Program and Extension Classes. It is a new program of lectures and one-day seminars. Each program is self-contained, and persons may register for any one or a combination of offerings. For more information and registration material, please call (612) 373-3941, or write to Lifetime Adventures in Learning, 201 Wesbrook Hall, 77 Pleasant Street S.E., Minneapolis, MN 55455. Students may also register in 101 Wesbrook Hall during regular registration periods.

Afternoon Lecture-Discussion Series

Dale Shepherd Room, Campus Club-Coffman Memorial Union

Begins with coffee, tea and dessert at 2 p.m. with lecture-discussion from 2:30 to 4.

IC 0800 LIFE TRANSITIONS. No credit. No tuition, \$8.50 course fee. Total \$8.50.

Life is a process of change. Change, especially forced change, is prominent in later life. These changes are discussed as well as how the changes you experience affect your relationships with the people you care about.

Winter Spec Term Sec 1 **Th**—2-4, Jan. 13 (1 meeting), Budd

No late fee through Jan. 6

(Linda Budd is a professor in the Family Social Science Department, and a licensed consulting psychologist)

Lifetime Adventures in Learning

IC 0801 MORAL ISSUES IN MEDICINE AND HEALTH. No credit. No tuition, \$8.50 course fee. Total \$8.50.

Lecture deals with specific personal and social problems concerning morality and health services, such as the availability and right to health care; problems of treatment; and the right to die. Participants are given the opportunity to ask questions and discuss issues.

Winter Spec Term Sec 1 **Th**—2-4, Feb. 10 (1 meeting), Zanoni

No late fee through Feb. 3

(Candido Zanoni is professor and head of the Arts, Communication and Philosophy Division, the General College)

IC 0802 GLOBAL INFLATION. No credit. No tuition, \$8.50 course fee. Total \$8.50.

Why have there been enormous rates of global inflation since the 1970s—inflation rates that never before existed? Is continued inflation inevitable? What can be done about it?

Winter Spec Term Sec 1 **Th**—2-4, Mar. 10 (1 meeting), Kudrle

No late fee through Mar. 3

(Robert Kudrle is the associate director of the Quigley Center of International Studies at the University)

IC 0803 THE GREAT DEPRESSION. No credit. No tuition, \$8.50 course fee. Total \$8.50.

Trace the roots of the great depression to the inflation and distortions that came out of World War I. Look at the boom and stock market craze that developed and lasted until October 1929. International effects evolving from these events are considered.

Spring Spec Term Sec 1 **Th**—2-4, Apr. 14 (1 meeting), Loehr

No late fee through Apr. 7

(Rodney Loehr is professor emeritus of History. From 1924-45 he was the historical officer of the U. S. Joint Chiefs of Staff, and from 1951-53 special historian for the U. S. High Commissioner for Germany)

IC 0804 THE MIX OF MIDWESTERN SPEECH. No credit. No tuition, \$8.50 course fee. Total \$8.50.

Why do we in the Upper Midwest speak as we do? How is our speech different from that of other Americans? A look at the speech of the settlers from New England and the Middle Atlantic states whose speech yielded the dialect patterns still conspicuous in Minnesota, Iowa, the Dakotas, and Nebraska. Slides and recordings are used to support the discussion.

Spring Spec Term Sec 1 **Th**—2-4, May 12 (1 meeting), Allen

No late fee through May 5

(Harold Allen is professor emeritus of English and Linguistics. He has served as president of the American Dialect Society, the National Council of Teachers of English, and Teachers of English to Speakers of Other Languages. He is author of three volumes of the Linguistic Atlas of the Upper Midwest)

Lifetime Adventures in Learning

One-Day Seminars

Begins with coffee at 8:30 a.m., lecture/discussion from 9 a.m. to noon. Lunch served at 12 noon, and the lecture/discussion continues until 4 p.m. Refreshment breaks both morning and afternoon.

IC 0810 GETTING ACQUAINTED WITH THE OPERA. No credit. No tuition, \$32 course fee. Total \$32.

The opera is one of the major achievements of Western culture, an art form that combines theatre, pageantry, music, and wonderful singing. Review the history of Italian opera—especially the “buffa”—through slides, lecture, and its music.

Fall Spec Term Sec 1 **W**—8:30 a.m.-4, Oct. 20 (1 meeting),
Minnesota Landscape Arboretum, (west of Rt 41 on
Hwy 5) Chaska, Adelman and Adelman
No late fee through Oct. 13

(Frederick J. and Bobbie Adelman have traveled on opera-centered visits to Europe and Australia and throughout the U.S. Lifelong devotees to the art form, they are active in Twin Cities opera education programs)

IC 0811 THE ARAB-ISRAELI CONFLICT: PAST AS PROLOGUE. No credit. No tuition, \$32 course fee. Total \$32.

A one-day seminar exploring the bases of continuing conflict, both myths and realities, and the deadly parallels between opposing national rights. Areas covered are the Arab and Israeli views of history, conflicting ideologies (Zionism, Palestinian nationalism, and communism), U.S. strategic interests, and alternative courses of action for America in the Middle East.

Fall Spec Term Sec 1 **Sa**—9:30 a.m.-4, Nov. 6 (1 meeting),
EBCEC 166, StP Campus, Quinlan
No late fee through Oct. 29

(C. Patrick Quinlan is a retired American diplomat with 10 years of service in the Middle East and 15 years in the Islamic world)

IC 0812 PERSONAL FINANCIAL PLANNING. No credit. No tuition, \$32 course fee. Total \$32.

Focus is on money management programs during retirement, investment insurance and tax strategies in an inflationary economy, and estate planning to manage and transfer property using gifts, trusts, annuities and wills. The seminar is designed to help you develop a personal financial plan considering your resources, goals, and priorities during retirement.

Winter Spec Term Sec 1 **Th**—8:30 a.m.-4, Jan. 27 (1 meeting),
EBCEC 156, StP Campus, Whitman
No late fee through Jan. 20

(Andrew Whitman is a professor of Finance and Insurance. He is also Director of Total Financial Planning Consultants, Inc. and Risk Consultants, Inc.)

Lifetime Adventures in Learning

IC 0813 GETTING TO KNOW THE COMPUTER. No credit. No tuition, \$32 course fee. Total \$32.

Computers are everywhere. Some of us view them as frightening, incomprehensible machines that are taking over. They need not be so intimidating if we understand what they can and cannot do. Includes a discussion of historical development and basic fundamentals. Become familiar with computer terminology such as data processing, storage and retrieval, programming logic, and computer systems.

Winter Spec Term Sec 1 **W**—8:30-4, Feb. 16 (1 meeting),
EBCEC 156, StP Campus, Marker
No late fee through Feb. 9

(Carolyn Marker is a senior systems analyst, Audio-Visual Library Service, University of Minnesota)

IC 0814 CONSERVATISM—OLD AND NEW. No credit. No tuition, \$32 course fee. Total \$32.

In this seminar, we examine the sometimes confusing but always fascinating phenomenon of "conservatism." Our inquiry proceeds along parallel tracks. The first track is historical, looking at the older, classical conservative tradition, as found in the writing of Burke, DeTocqueville, and Cardinal Newman; and contrasting this with the newer version of conservatism found in the writings of William F. Buckley, Russell Kirk, Jeffrey Hart, and others. The second track is conceptual, examining the leading concepts in conservative thought; for example, tradition and innovation, continuity and change, conserving and preserving. Inquiries disclose some intriguing discontinuities in conservatism.

Winter Spec Term Sec 1 **W**—8:30 a.m.-4, Mar. 16 (1 meeting),
EBCEC 156, StP Campus, Ball
No late fee through Mar. 9

(Terance Ball is an associate professor of Political Science, and the author of a recently published book on conservatism in the U.S.)

IC 0815 NORTH OF THE BORDER: A PERSPECTIVE ON CANADA. No credit. No tuition, \$32 course fee. Total \$32.

Professor Jackie Peterson of the History Department opens this seminar with a historical overview of Canada's settlement and development. Professor Douglas Nord of Political Science on the Duluth campus discusses the future of Canada, an examination of federal/provincial relations focusing on social and political tensions between Ottawa and the various regions of the country. Attention to real and potential separatist movements in Quebec and the Canadian West and the efforts of the federal government to overcome these rifts in the Canadian confederation. Professor Mary Henry Nocktsheim of the Literature Department at the College of St. Catherine talks about French Canadians' sense of identity as portrayed through their modern literature. Closing the day, one of the foreign service officers from the Canadian Consulate speaks on the status of the relationship between Canada and the United States.

Spring Spec Term Sec 1 **W**—8:30 a.m.-4, Apr. 20 (1 meeting),
Minnesota Landscape Arboretum (west of Rt
41 on Hwy 5) Chaska
No late fee through Apr. 13

Study and Travel Adventures



If you like to travel, have an interest in a particular place, or would like a tour with a difference, **Informal Courses Study and Travel Adventures** are for you. Every tour is conducted by an instructor who is an expert in the field. That expertise, coupled with pre-trip lectures and limited tour size, ensures valuable interaction among students and instructors for a memorable trip. You are able to combine the pleasures of a vacation with the satisfactions of learning. Study and Travel Adventures come in a variety of packages—ranging from two days to two weeks. Pick one to fit your vacation schedule. **Call 376-7500 for a detailed itinerary.**

IC 0900 THE SINGING WILDERNESS: SIGURD OLSON'S BOUNDARY WATERS CANOE AREA. No credit. No tuition, \$155 course fee (includes all transportation, meals, lodging, field trips). Total \$155.

Sigurd Olson wrote of a unique wilderness of lakes, streams, smooth granite islands, and rolling wooded hills where travelers follow the ancient canoe routes of Indians and French voyageurs. In his essays he raises some challenging questions about the nature of the universe and the future of mankind. We will travel to the Boundary Waters Canoe Area and discuss Sigurd Olson's writings in their original setting. A brief introduction to the ecology, geology, social and political history of the area are presented in lecture, short nature hikes, and field trip.

Fall Spec Term Sec 1 W, Th, F—Sept. 8, 9, 10

(Leading the motor coach tour to the Ely area is Bill Cunningham, Professor of Genetics and Cell Biology. He has 30 years experience canoeing, back-packing, and wilderness camping)

IC 0901 NATURAL HISTORY OF THE PRAIRIE. No credit. No tuition, \$155 course fee (includes transportation to Wabasha from St. Paul, lodging, meals, field trips). Total \$155.

This short course combines lectures and field trips to give an overview of the prairie in southeastern Minnesota. This part of the state is well known for its spectacular scenery and fall color. Few people, however, have explored its unusual prairies. We will visit two very different types of prairies associated with the Mississippi River. One is in a sand dune area between Kellogg and Weaver, and the other is on a steep limestone bluff overlooking the river valley. We will stay in Wabasha for meals and lectures. The illustrated lectures emphasize human as well as plant and animal adaptations to prairie conditions.

Fall Spec Term Sec 1 W-Su—Sept. 17-19, Sigford, Johnson

(Ann Sigford and David Johnson are an interpretive team. She is the senior naturalist at Wood Lake Nature Center in Richfield, author of two books, and prairie specialist. He is a natural history exhibit designer and photographer)

Study and Travel Adventures

- IC 0902 THE SCANDINAVIAN IMMIGRANT EXPERIENCE IN THE UPPER MIDWEST.** No credit. No tuition, \$175 course fee (includes transportation to Iowa, meals, lodging, museum fees and field trips). Total \$175.

Travel to Decorah, Iowa, home of the Nordic Fest, Luther College, and Vesterheim—the Norwegian-American Folk Museum. View the scenic countryside of southeastern Minnesota where Scandinavian pioneers founded many settlements during the last century. In slide-illustrated lectures and discussions, learn why millions of Scandinavians left their homelands and came to the Upper Midwest, and how they struggled with the conflicts between their Old World heritage and the New World.

Spring Spec Term Sec 1 **W-Sa—May 18-21**, Dion

(Mathew Dion is assistant director of the Honors Program in the College of Liberal Arts and former member of the Scandinavian Department. He is completing a study of the Norwegian-American novelist, Ole Rolvaag)

- IC 0903 MISSISSIPPI RIVER TOWNS: MIRRORS OF THE PAST.** No credit. No tuition, \$155 course fee (includes transportation, lodging, meals, field trips). Total \$155.

See, study, and enjoy old Minnesota (preserved or restored to former glory) in the river towns of Red Wing, Wabasha, Winona, and Frontenac. Time is given to discussion of the history of these communities, the people, and their activities that linked each city to the region, nation, and the Old World from which many residents had come.

Spring Spec Term Sec 1 **T,W,Th—June 14, 15, 16**

No late fee through June 7

(Robert Fogerty is professor emeritus of history at the College of St. Thomas. He has served as consultant during the restoration and renovation of Mississippi River towns in Minnesota)

- ★IC 0904 OFF THE BEATEN PATH IN THE CARIBBEAN.** No credit. No tuition, \$530 course fee (does not include air fare). Total \$530.

An in-depth study and travel exploration of the "land Columbus loved best," this program is designed for travelers interested in the unique history, culture, and people—as well as the exceptional natural beauty—of the West Indies. The Spanish-speaking Dominican Republic, often described as "the best kept secret in the Caribbean," has the most dramatic and varied geography in all the islands, a superbly restored colonial city (Santo Domingo, the first Spanish city in the Americas), and a people whose traditional hospitality has been unaffected by the heavy level of tourism that typifies the usual vacation destinations in the region. Learn about the fascinating history of the birthplace of Spanish America and experience the Caribbean at its fullest. (Limited to 9)

Winter Spec Term Sec 1 **Feb. 11-20**, Johnson

(Stephen Johnson, associate director of the University's International Study & Travel Center, is the group leader. He has led several trips to the Dominican Republic)

- ★IC 0905 BIRDS OF THE CAROLINAS: AN EARLY SPRING EXCURSION.** No credit. No tuition, \$198 course fee (does not include food, accommodations, or transportation to the rendezvous point). Total \$198.

This natural history study-travel adventure is designed for the enthusiastic birder. A week-long field course based in South Carolina allows observation of birds seldom or never seen in Minnesota, and the chance to see them in a diversity of habitats including the seashore, coastal plain, and sandhills region. Overland travel by microbus permits a flexible and spontaneous exploration of these habitats, the birds, and the abundant spring wildflowers and flowering trees. Class members have the option of camping out or staying at motels in or near wildlife areas, including Sumter

Study and Travel Adventures

National Forest, Cape Romain Wildlife Refuge (especially Bull Island), and the Carolina Sandhills National Wildlife Refuge—all known for their plentiful bird life. Participants can expect to see more than 125 different bird species on the trip, including Brown Pelican, Anhinga, Swallow-tailed Kite, Bobwhite, Ground Dove, coastal gulls and shorebirds, overwintering waterfowl, Red-cockaded Woodpecker (an endangered species), Carolina Chickadee, Brown-headed Nuthatch, Carolina Wren, Painted Bunting, Mockingbird, and many other southern species. Each participant will receive a hardbound copy of *Birds of the Carolinas* by Potter, et. al. Students are expected to provide their own transportation to South Carolina and the rendezvous point. Offered in cooperation with the Bell Museum of Natural History. (Limited to 14)

Winter Spec Term Sec 1 March 19-26, Hilton

(Bill Hilton Jr., is the group leader. He is an ornithologist, field naturalist, and science educator)

★**IC 0906 A FRESH LOOK AT SOUTHERN SPAIN.** No credit. No tuition, \$605 course fee (does not include air fare). Total \$605.

A unique travel-study tour in which the group stays in the "paradores," a network of beautiful hotels. Many are restored castles and palaces dating back to medieval times, decorated with period furniture, ceramic tiles, and tapestries. Cities visited are Madrid, Toledo, Granada, Cordoba, and Seville. Emphasis of the adventure tour is an authentic introduction to the Iberian peninsula for the interested traveler, specifically including areas that are rarely visited by tourists. A background of history, art, and culture of Spain are offered en route, thereby enabling the traveler to appreciate more fully the enhancement of the land. (Limited to 9)

Winter Spec Term Sec 1 March 15-26, Ceplecha

(Maria Ceplecha, an instructor in the Spanish Department at the University, is the group leader. She has extensive experience studying, working, and living in Spain)

★**IC 0907 INTRODUCTION TO THE MAYA OF YUCATAN.** No credit. No tuition, \$525 course fee (does not include air fare). Total \$525.

A study-travel introduction to the ancient and modern Maya as seen in settings ranging from archaeological sites found in the tropical forests to the present-day villages of their descendants. Yucatan is one of the areas where Maya culture flourished over 1000 years ago. Archaeologists and other individuals currently involved in Maya studies in Yucatan are called on as on-site resource people. Overland tour by microbus aids in spontaneous and individualized travel. (Limited to 24)

**Winter Spec Term Sec 1 Jan. 28-Feb. 6, S Messinger,
P Messinger**

(Skip and Phyllis Messinger are graduate students in the University's Department of Anthropology. Both have extensive travel experience in Mexico)

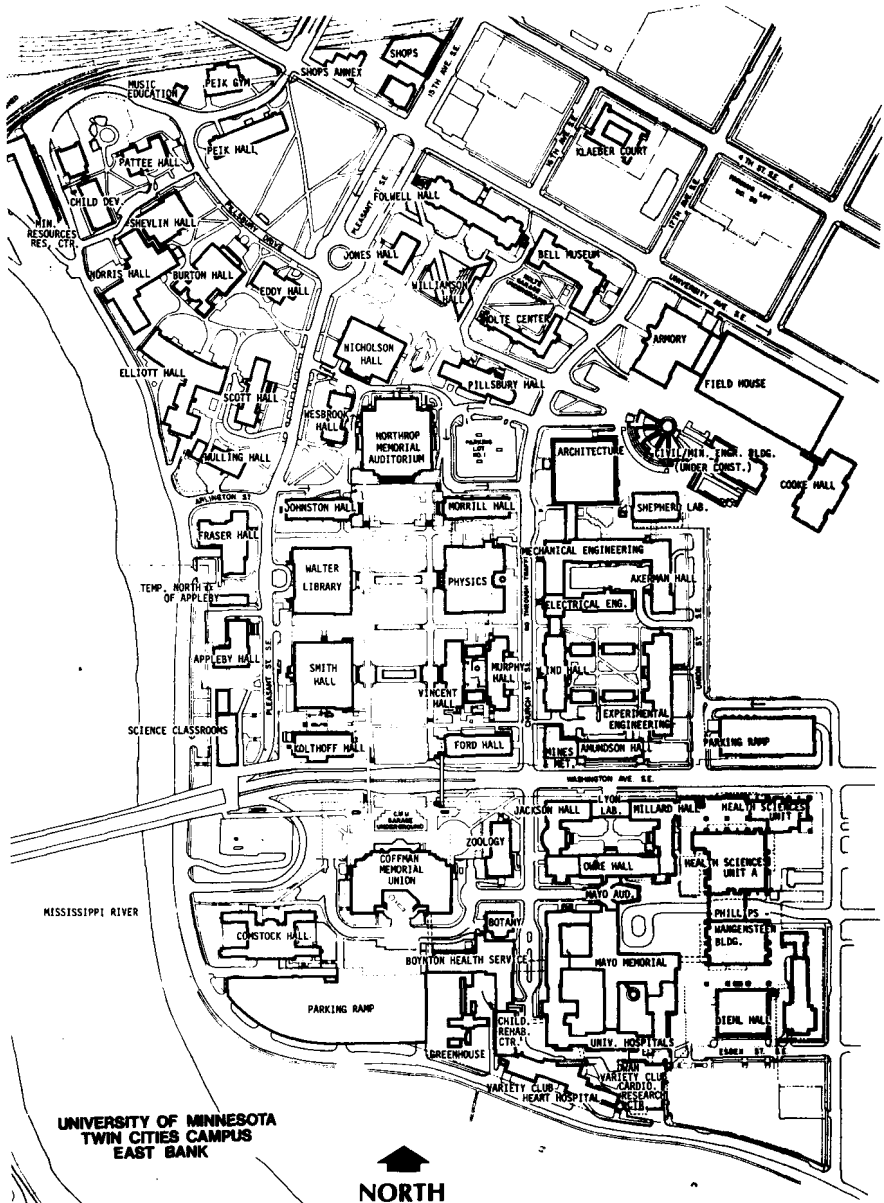
IC 0908 NEW YORK CITY THEATRE TOUR. No credit. No tuition, \$450 course fee (does not include air fare). Total \$450.

Enjoy the best Broadway and off-Broadway plays and musicals, interview leading actors and actresses, discuss criticism with a theatre critic, and inspect theatre and costume collections. This tour is conducted by a member of the University of Minnesota-Duluth Theatre Department.

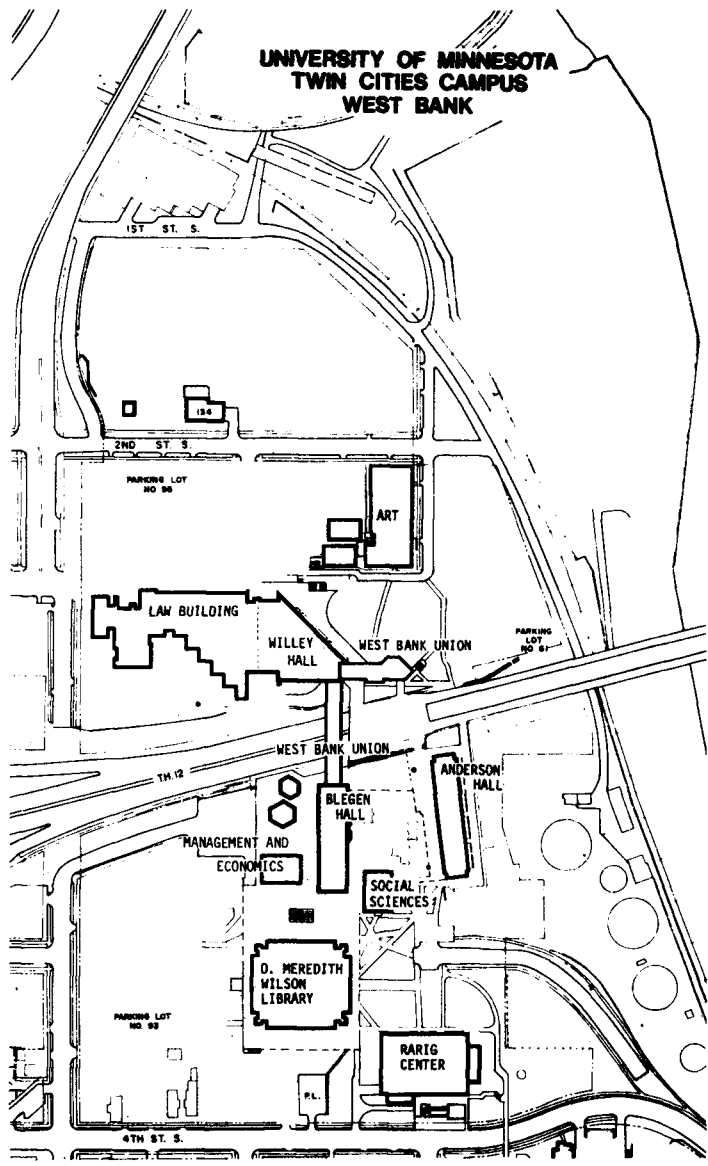
Tentative dates: Feb. 27-Mar. 7

IC 0909 ART AND CRAFT TOUR OF CHINA. Tentatively scheduled for summer 1983. Tentative price of \$3,850 includes all expenses on a 21-day trip.

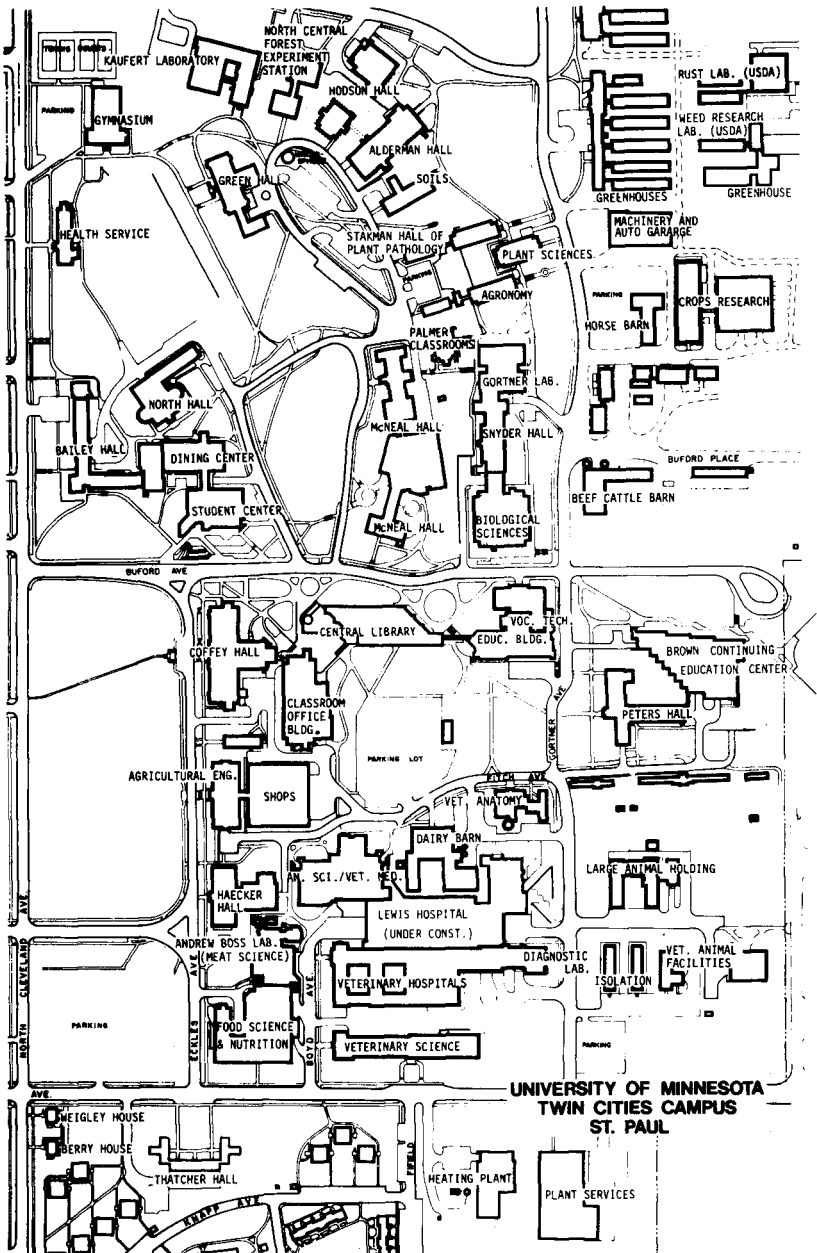
IC 0910 PHOTO TOUR OF ALASKA. Tentatively scheduled for summer 1983.



UNIVERSITY OF MINNESOTA
TWIN CITIES CAMPUS
WEST BANK



NORTH

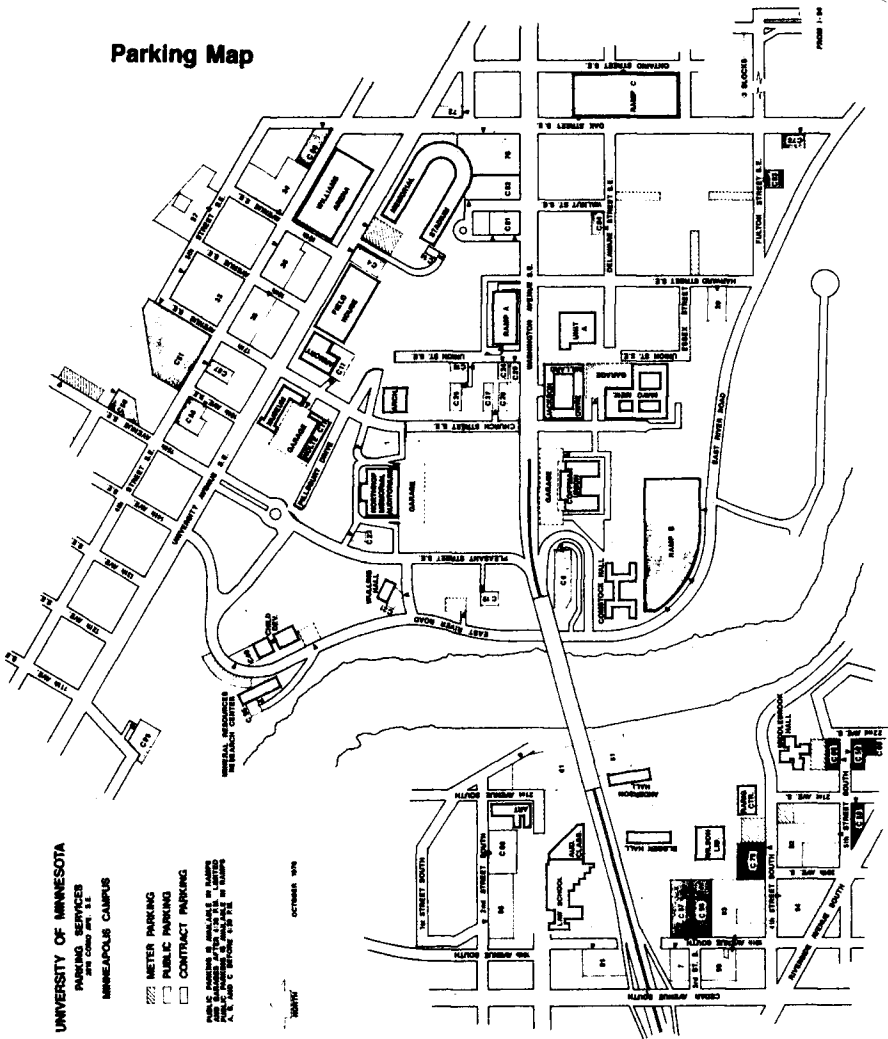


**UNIVERSITY OF MINNESOTA
 TWIN CITIES CAMPUS
 ST. PAUL**

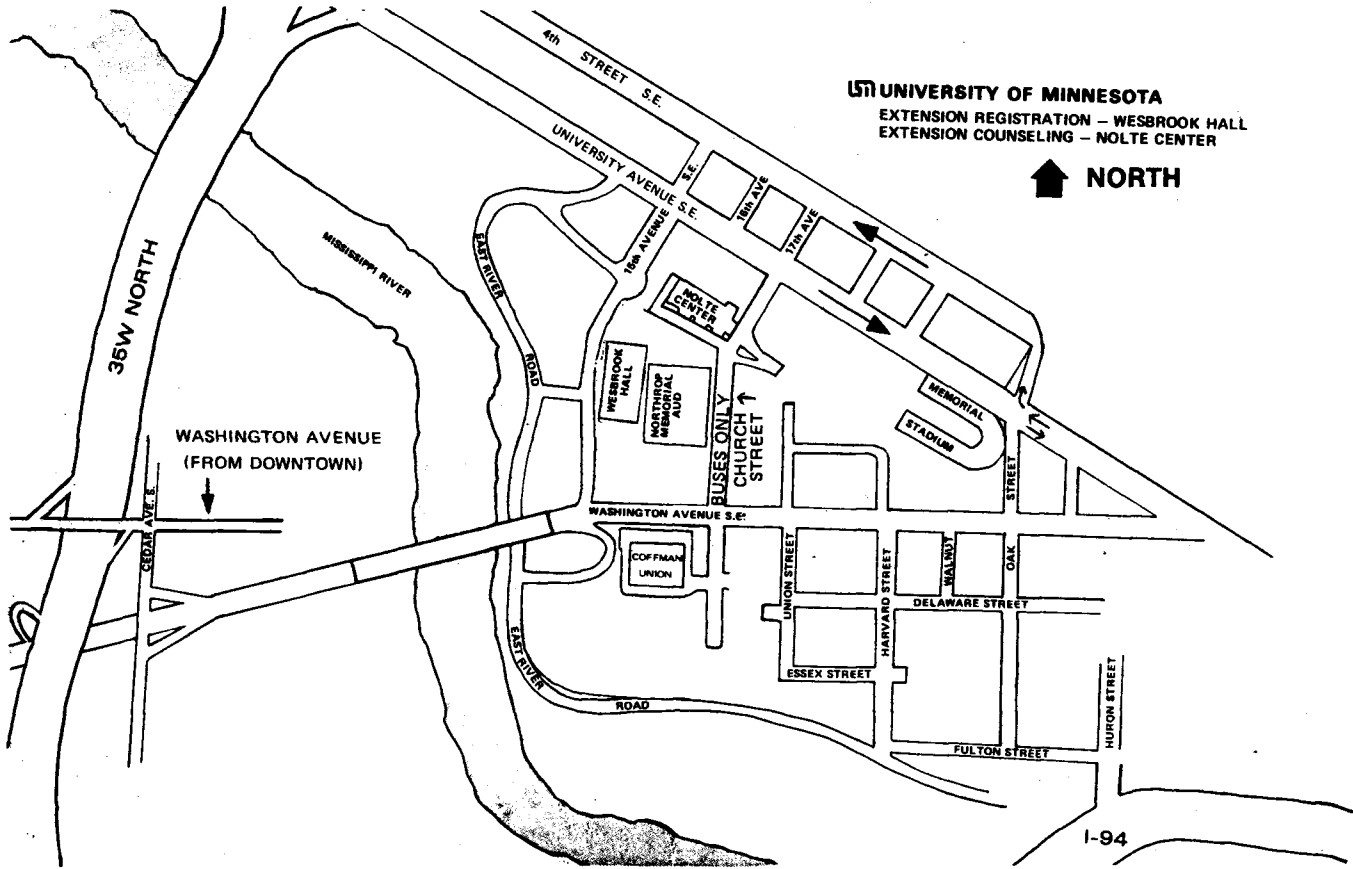


NORTH

Parking Map

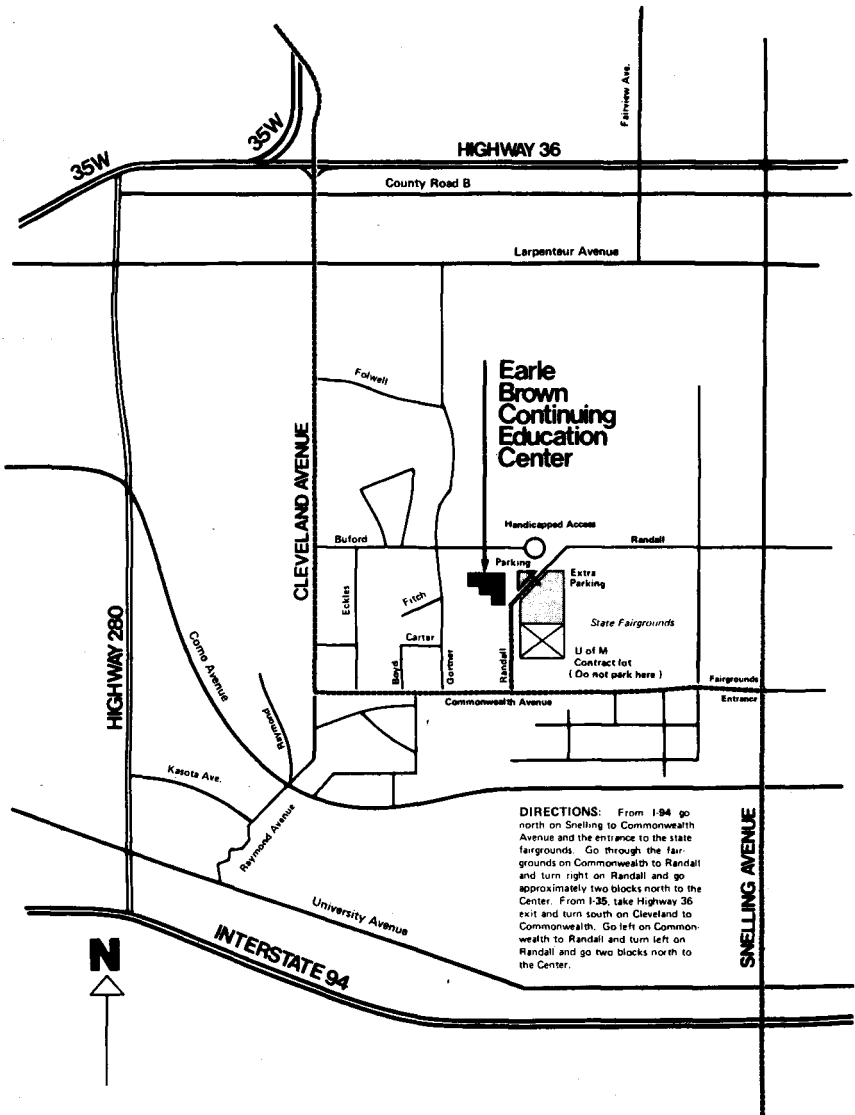


PARKING FACILITIES (East and West Bank)



UNIVERSITY OF MINNESOTA
 EXTENSION REGISTRATION - WESBROOK HALL
 EXTENSION COUNSELING - NOLTE CENTER





**Earle
Brown
Continuing
Education
Center**

Handicapped Access
 Parking
 Extra Parking
 State Fairgrounds
 U of M Contract lot
 (Do not park here)
 Fairgrounds Entrance

DIRECTIONS: From I-94 go north on Snelling to Commonwealth Avenue and the entrance to the state fairgrounds. Go through the fairgrounds on Commonwealth to Randall and turn right on Randall and go approximately two blocks north to the Center. From I-35, take Highway 36 exit and turn south on Cleveland to Commonwealth. Go left on Commonwealth to Randall and turn left on Randall and go two blocks north to the Center.

Department of Extension Classes Registration Form For Informal Courses

CHECK HERE IF YOU
ARE 62 YEARS OR
OLDER

NAME LAST		FIRST		MIDDLE	
LOCAL STREET		CITY		STATE	ZIP
HOME PHONE	BUSINESS PHONE	EXT	BIRTHDATE		
			MONTH	DAY	YEAR
COURSE #	COURSE TITLE	SECTION # (IF ANY)		FALL. WINTER OR SPRING TERM	
COURSE #	COURSE TITLE	SECTION # (IF ANY)		FALL. WINTER OR SPRING TERM	
1 2 3					

Department of Extension Classes Registration Form For Informal Courses

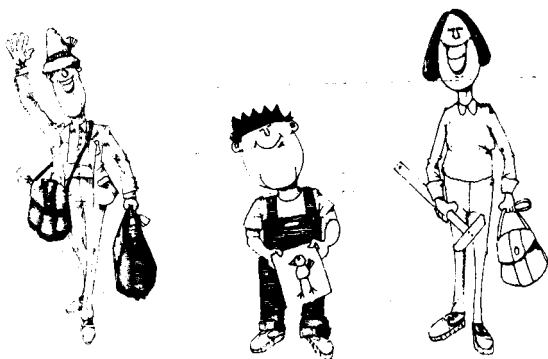
CHECK HERE IF YOU
ARE 62 YEARS OR
OLDER

NAME LAST		FIRST		MIDDLE	
LOCAL STREET		CITY		STATE	ZIP
HOME PHONE	BUSINESS PHONE	EXT	BIRTHDATE		
			MONTH	DAY	YEAR
COURSE #	COURSE TITLE	SECTION # (IF ANY)		FALL. WINTER OR SPRING TERM	
COURSE #	COURSE TITLE	SECTION # (IF ANY)		FALL. WINTER OR SPRING TERM	
1 2 3					

You're invited!

Fall 1982 Open House

Sept. 8, 5 to 8 p.m.



If Extension is new to you, if you want to get acquainted with the campus, or if you have questions about "where" and "how," we have an invitation for you.

Come to our open house Wednesday, September 8, in the Nolte Center Lounge (315 Pillsbury Drive S.E.) on the Minneapolis campus. We'll be there from 5 to 8 p.m.

The atmosphere will be casual. Staff members and program advisers will be on hand to answer your questions about courses, degrees and certificates, and student services. Representatives from many departments in Continuing Education and Extension can describe learning opportunities open to you through evening classes, courses for women, courses by correspondence and television, and programs concentrating on specific professions and in the arts. Helpful bulletins and literature describing those courses and programs will be available, too.

If you're interested, there are campus tours. And special presentations are scheduled that highlight study skills helps, learning opportunities, and student services. Pick one that meets your needs (offered alternately every half hour).

Even if you have no specific questions or problems, stop in for a cup of coffee or cider and let us get to know you.

A free baby-sitting service will be offered in Nolte Center if you need it. Park free in the Nolte Center Garage. See the parking and campus maps near the back of this bulletin for location. Questions? Call us at 376-7500.