

XIV-4

DESK COPY

Delivery _____

OK Kill _____

General Information

1961-1962



Cyrus Northrop
Memorial Auditorium

Bulletin

of the UNIVERSITY of MINNESOTA

INDEX

Administrative Committee	3	Incidental Fee	34
Admission to the University	4-10	Law School	17
Adult Specials	8	Library	25
Advanced Standing (for non-U. of M. work)	8	Loans and Scholarships	29
Advanced Standing Examinations	8	Medical School	14
Applications	4	Medical Technology	14
Examinations for Admission	8	Minneapolis Campus—Map	40
Graduate School	9	Morris Campus	6, 13
High School, Admission from	4	Morris Campus—Map	38
Nonresidents	4	Mortuary Science	7, 14
Preprofessional	9	Music	27
Professional Colleges	9	Nonresident Students	9, 35
Summer Session	8	Nursing, School of	7, 14, 15
Transfers within the University	9	Occupational Therapy	15
Agriculture, Forestry, and Home Eco- nomics, College of	6, 13	Organization of the University	4
Athletic Purposes	36	Orientation	10
Board of Regents	3	Pharmacy, College of	17
Business Administration, School of	16	Physical Therapy	15
Calendar	20-21	Public Health, School of	16
College Advisory Programs	24	Recreational Opportunities	26-29
Continuation Study	18	Art Galleries	26
Correspondence Study	18	Convocations	26
Costs of University Attendance	32-35	Physical Education	28, 36
Counseling	23-24	Social Programs	29
Degree Requirements	10	Theater	28
Degrees and Courses	10-18	Refunds	35
Dental Hygiene	7, 13	Registration	10, 20, 21
Dentistry	17	Religious Activities	24
Duluth Campus	6, 12	Reserve Officers Training Corps	19
Duluth Campus—Map	37	St. Paul Campus—Map	39
Education, College of	7, 12	Scholastic Standing Committees	24
Employment	30	Science, Literature, and the Arts, College of	5, 10
Evening Classes	18	Selective Service	25
Expenses	33	Social Programs	29
Extension Division	18	Special Services for Students	22-32
Fees	33-35	Speech and Hearing Clinic	24
Fellowships	30	Sports	28, 36
Financial Aids	29	Student Activities	24
Food Services	32	Summer Session	8, 18
Foreign Students	22, 24	Technology, Institute of	5, 12
Freshman Programs	10-14	Tuition Fees	33
General College	5, 11	University College	18
Graduate School	9, 18	Veterans and War Orphans	25
Handicapped Students	30	Veterinary Medicine, College of	17
Health Service	22		
Housing	30		

Front cover—Cyrus Northrop Memorial Auditorium. Inscription on façade:

FOUNDED IN THE FAITH THAT MEN ARE ENNOBLED BY UNDERSTANDING, DEDICATED TO THE ADVANCEMENT OF LEARNING AND THE SEARCH FOR TRUTH, DEVOTED TO THE INSTRUCTION OF YOUTH AND THE WELFARE OF THE STATE.

University of Minnesota

Board of Regents

The Board of Regents is composed of The Honorable Ray J. Quinlivan, St. Cloud, First Vice President and Chairman; The Honorable Charles W. Mayo, M.D., Rochester, Second Vice President; The Honorable James F. Bell, Minneapolis; The Honorable Edward B. Cosgrove, Le Sueur; The Honorable Daniel C. Gainey, Owatonna; The Honorable Richard L. Griggs, Duluth; The Honorable Robert E. Hess, White Bear Lake; The Honorable Marjorie J. Howard (Mrs. C. Edward), Excelsior; The Honorable A. I. Johnson, Benson; The Honorable Lester A. Malkerson, Minneapolis; The Honorable A. J. Olson, Renville; and The Honorable Herman F. Skyberg, Fisher.

Administrative Committee

O. Meredith Wilson, President, 202 Administration Building
Malcolm M. Willey, Vice President, Academic Administration, 200 Administration Building
Laurence R. Lunden, Vice President, Business Administration, 326 Administration Building
Stanley J. Wenberg, Vice President and Administrative Assistant, 236 Administration Building
Ray M. Amberg, Director of University Hospitals, B-313 Mayo
Ike J. Armstrong, Director of Athletics, 110 Cooke Hall
Ruth E. Boynton, Director of University Health Service, W-334 Health Service
Rodney A. Briggs, Dean, University of Minnesota, Morris
J. William Buchta, Chairman, University College Committee, 225 Johnston Hall
Walter W. Cook, Dean of the College of Education, 204 Burton Hall
Bryce L. Crawford, Jr., Dean of the Graduate School, 321 Johnston Hall
William H. Crawford, Dean of the School of Dentistry, 136 Owre Hall
Raymond W. Darland, Provost, University of Minnesota, Duluth, 230 Science Addition
Arthur W. Dern, Colonel, United States Air Force, ROTC Representative, 7 Armory
Paul V. Grambsch, Dean of the School of Business Administration, 127 Vincent Hall
George P. Hager, Dean of the College of Pharmacy, 115 Appleby Hall
Edwin L. Haislet, Director of Alumni Relations, 205 Coffman Memorial Union
Robert B. Howard, Dean of the College of Medical Sciences, 1360 Mayo
William B. Lockhart, Dean of the Law School, 125 Fraser Hall
Harold Macy, Dean of the Institute of Agriculture, 201 Coffey Hall, St. Paul Campus
Errett W. McDiarmid, Dean of the College of Science, Literature, and the Arts, 215 Johnston Hall
Keith N. McFarland, Assistant Dean, College of Agriculture, Forestry, and Home Economics, 202 Coffey Hall, St. Paul Campus
Horace T. Morse, Dean of the General College, 106 Nicholson Hall
Julius M. Nolte, Dean of University Extension, 152 Nicholson Hall
William L. Nunn, Director of University Relations, 213 Administration Building
Athelstan F. Spilhaus, Dean of the Institute of Technology, 107 Main Engineering Building
Edward B. Stanford, Director of Libraries, 107 Walter Library
Robert Edward Summers, Dean of Admissions and Records, 232 Administration Building
Willard L. Thompson, Assistant to the President, 202 Administration Building
William T. S. Thorp, Dean of the College of Veterinary Medicine, 256 Veterinary Science, St. Paul Campus
Edmund G. Williamson, Dean of Students, 200 Eddy Hall
E. W. Ziebarth, Dean of the Summer Session, 135 Johnston Hall

Volume LXIV, Number 4

February 15, 1961

BULLETIN OF THE UNIVERSITY OF MINNESOTA

Published semimonthly January 1 to November 15 inclusive. Second-class postage paid at Minneapolis, Minnesota. Send change of address notices and other communications to Office of Admissions and Records, University of Minnesota, Minneapolis 14, Minn.

How the University Is Organized

The University of Minnesota is governed, under its charter from the State, by its Board of Regents—12 citizens of the State elected by the legislature. Its chief administrative officers are the president, the provost at Duluth, three vice presidents, and the deans. Money to support the University's teaching, research, and service activities comes from legislative appropriations, from student fees, and from endowments, grants, and donations from many organizations and individuals.

The University offers programs on four campuses. Most of the colleges and schools, as well as the University's central administration, are on the Minneapolis Campus. The College of Agriculture, Forestry, and Home Economics and the College of Veterinary Medicine are on the St. Paul Campus. Other campuses include the University of Minnesota, Duluth, and the University of Minnesota, Morris. Each campus has an Office of Admissions and Records.

Who May Enter the University

The *colleges* of the University invite applications for admission from: (a) Minnesota residents who have been graduated from accredited high schools, or those who have Equivalence Certificates; (b) students who have completed some college work elsewhere; (c) nonresidents who present above-average high school or college records; (d) non-high school graduates who hope to qualify by examination; (e) mature men and women (usually 24 years or older) who want single courses or groups of courses to meet special personal needs and not for degree purposes.

The *professional schools* or *colleges* consider applications from students who have completed (depending on the individual college requirement) 1 to 3 years of pre-professional college level education.

The *Graduate School* considers applications from any student who has a Bachelor's degree from a recognized college or university.

How and When to Apply for Admission

All applications for admission to undergraduate schools are received by the University's Offices of Admissions and Records on the Minneapolis, St. Paul, Duluth, and Morris campuses. If you wish to apply for admission, you may secure application forms from any of these offices. Freshman application forms are also available at Minnesota high schools. All completed applications should reach the Office of Admissions and Records on the appropriate campus *more than a month before the desired entrance date*. This means that high school seniors planning to attend the University must apply promptly after graduation (well-qualified high school applicants are encouraged to apply during their senior year) if they hope to make full use of available advisory and counseling services and to plan appropriate programs. An admission certificate and registration instructions are sent to successful applicants; those who are not successful are notified promptly.

Admission from High School

The admission requirements for high school graduates, who are residents of Minnesota, are outlined by college or division under the headings which follow. (See Nonresident Admission also.) In addition to such special requirements as are indi-

cated, freshman applicants for all programs are required to take the tests of the American College Testing program (ACT). Testing dates and schedule are announced to the high schools by the state co-ordinators for the American College Testing program. Each student participating in the program pays a \$3 testing fee. ACT test scores will not be used at this time as a basis for admission.

Anyone who wishes to attend college but thinks he may not be admissible (because he did not graduate from high school or failed to take certain courses believed necessary for college entrance) and those in doubt about course offerings are invited to write to the Admissions Officer, University of Minnesota, Minneapolis 14. Almost every college of the University has made special arrangements to select worthy applicants regardless of their precollege training. Recommendations from high school principals or counselors are encouraged. See also Admission by Examination.

In the resident admission requirements listed below, a high school *unit* stands for a year of work of approximately 180 class hours in a subject.

College of Science, Literature, and the Arts

The "Arts College," the University's largest, admits high school graduates who have college aptitude ratings of 40 or higher. The college aptitude rating is the average of the high school percentile rank and the college aptitude test percentile rank. Applicants not fully meeting this requirement may be requested to submit additional information.

Applicants should have completed 12 units in the last 3 years of high school, including at least 9 units from the following: English, social studies and history, mathematics, natural science, and foreign languages. Three of these units should be in English, 2 or more in mathematics, including 1 unit of plane geometry, and 2 or more in any one of the other areas specified. Algebra in grade 9 may count toward the mathematics requirement but not as 1 of the 12 units required from grades 10-12. A foreign language from grade 9 may count toward the language sequence, but not toward the 12 units required from grades 10-12.

Students whose college aptitude test scores are 40 or better and who are in the top 10 per cent of their high school graduating classes may be admitted even though they do not meet the pattern of high school subjects prescribed in the preceding paragraph. Those planning college work in mathematics, business administration, or medical or other sciences, however, should complete as much mathematics beyond plane geometry as possible, preferably including higher algebra and trigonometry.

General College

The General College is open to any resident of Minnesota who is a graduate of an accredited high school. The main purpose of this 2-year college is to give the student an opportunity to obtain a general education at the college level. While doing this he may explore a variety of subject matter fields and test himself in college competition. Applications for admission to the General College are judged on the basis of students' educational-vocational plans for how they relate to the College program. The level of high school performance, standing on college aptitude tests, and pattern of high school subjects do not determine admission.

Institute of Technology

The Institute of Technology—called by the students "IT"—consists of five colleges and schools to provide education in basic and applied physical sciences and in architecture. It is strongly recommended that students wishing to enter IT complete 4 years of mathematics, divided approximately among 2 years of algebra and 2 years of geometry of 2 and 3 dimensions, including trigonometry. Courses in physics and chemistry are also highly desirable. If these courses are unavailable in the student's high school, consideration should be given to available correspondence courses (see *Bulletin of Correspondence Study*) and extension classes (see *Bulletin of Evening and Special Classes*). To be admitted to the Institute of Technology a high school graduate must satisfy the two major requirements detailed below:

1. Course requirements

- a. Twelve units completed in grades 10-12, including 3 units in English and 3 or more units from the following: foreign language, history, social science, physical science, and biological science.
- b. A minimum of 3 units in mathematics, including $1\frac{1}{2}$ units of algebra and $1\frac{1}{2}$ units in geometry. The $1\frac{1}{2}$ units in algebra may include 1 unit of ninth grade algebra; the $1\frac{1}{2}$

units of geometry may include $\frac{1}{2}$ unit of trigonometry, and must include some solid geometry.

2. Academic Standing

A student is admitted on the basis of an IT aptitude rating which combines his high school rank and his achievement in an entrance examination in mathematics. In general, the student must be in the upper half of his high school class. However, a student below the 50-percentile high school rank can qualify for admission on the basis of above-average performance in the mathematics examination; similarly, a student above the 50-percentile high school rank will not be admitted when his achievement in the mathematics examination indicates that he does not qualify for admission to IT. The required mathematics test is made available to Minnesota high schools so that those high schools that wish to do so may administer the test. Seniors interested in applying for the Institute of Technology should contact their principal or counselor by March 1 to determine availability of the test. Those prospective applicants who are not able to take the test in high school should write to the Office of Admissions and Records for information and procedures to follow.

A full unit of general mathematics followed by a full unit of higher algebra may be substituted for the $\frac{1}{2}$ -unit algebra requirement. If a student lacks either a half unit in algebra or a half unit in geometry, the deficiency should be made up, if possible, during the summer or any other period preceding entrance through correspondence or extension courses. As a last resort, a student may make up his deficiency during his first quarter in residence (without Institute credit), since he can be admitted to IT on the condition that he make up the deficiency by the end of his first quarter in residence. However, it should be emphasized that the first quarter in the Institute is a difficult one and every effort should be made to avoid the added burden caused by mathematics deficiencies. The deficiency in algebra should be removed by registration in ITM 9 or in Math H (Higher Algebra). The deficiency in geometry should be removed by registration in ITM 8 (Solid Geometry). If deficiencies are not removed by the end of the first quarter, the student will not be permitted to continue in the Institute.

Students not eligible for admission to the Institute of Technology directly may apply for transfer to the Institute of Technology after 1 or more years of satisfactory work in some other college, such as a local junior college, a liberal arts college, or the University General College. Work offered for transfer must meet the scholastic requirements of the Institute of Technology. Students who enter another college hoping to earn a later transfer to the Institute of Technology must consult with the counselors in that college at the very beginning of the school year in order to plan for this transfer and to receive help in planning their programs in relation to this goal.

University of Minnesota, Duluth

A college aptitude rating of 40 or more is required for admission to preprofessional courses or to curriculums leading to the B.A. or B.S. degree. Although no special grouping of high school courses is required it would be helpful to entering students to have taken a relatively strong college preparatory program in high school. Admission to the 2-year terminal program leading to the A.A. degree is based on a high school diploma or its equivalent as minimum requirements. Applicants are admitted if it appears that they will be able to benefit from the programs offered.

Additional information about entering the University of Minnesota, Duluth can be obtained from the Office of Student Personnel Services, 130 Kirby Student Center, University of Minnesota, Duluth, Duluth 12, Minnesota.

University of Minnesota, Morris

High school graduates will be admitted to the collegiate program at Morris if they rank in the upper 60 per cent of their high school graduating class or in the upper 60 per cent on appropriate college aptitude tests (such as those of the State-wide Testing Program). Graduates of high schools not meeting these thresholds will be considered for admission through counseling at the University of Minnesota, Morris with the use of special tests, recommendations by secondary school principals, and other relevant data.

Additional information about entering the University of Minnesota, Morris can be obtained from the Office of Student Services, 102 Edson Hall, University of Minnesota, Morris, Morris, Minnesota.

College of Agriculture, Forestry, and Home Economics

High school graduates in the upper 75 per cent of their classes may enter if they have completed 12 units in grades 10-12. Nine of these should be in English, social studies and history, mathematics, natural science, and foreign languages. Distribution of these units with respect to the major areas included in the College program should be as outlined below. Students should note

that although higher algebra is not a requirement for admission, it is a prerequisite for required courses in the majority of curriculums in agriculture and forestry, and in preveterinary medicine. Therefore students are encouraged to secure higher algebra whenever possible.

Agriculture—3 units in English, 1 unit in elementary algebra plus 1 unit in plane geometry and 1 or more units in natural science or agriculture.

Forestry—3 units in English, 2 units in mathematics (elementary algebra and plane geometry) and 1 unit in natural science.

Home Economics—3 units in English, and 1 unit in elementary algebra. One unit in home economics may be included in the 9 basic units. Students graduating in the upper 25 per cent of the high school class may enter without regard to subjects taken in high school.

Preveterinary Medicine—3 units in English, 2 units in mathematics (elementary algebra and plane geometry), and 1 or more units in natural science or agriculture. Students wishing to prepare for the College of Veterinary Medicine should apply for admission to the College of Agriculture, Forestry, and Home Economics.

College of Education

Preparation for a number of teaching fields is open to high school graduates in the upper 60 per cent of their classes regardless of the high school courses they have completed. These fields are art education, business and distributive education, industrial education, music education, nursery-kindergarten-primary education, physical education, and recreational leadership.

Individuals who wish to prepare for teaching in the elementary schools complete 1 year of preprofessional study in the Arts College, then transfer to the College of Education. Admission to the College of Education requires a C average in specified preprofessional courses.

To enter teacher training in other fields, the College requires 2 years of preprofessional work in the Arts College or, for agriculture or home economics teaching, in the College of Agriculture, Forestry, and Home Economics. Students aiming at these fields must meet entrance requirements of the college they enter.

To gain advanced standing in this College, a student must have maintained an over-all C average, and an average midway between C and B in courses in his major. Application for admission with advanced standing should be made prior to June 1, for the next succeeding fall quarter, and by the Friday preceding fall and winter quarter final examinations for admission to the winter and spring quarters. Such students must also take preadmission psychological tests offered in the quarter preceding transfer.

Whether a student is well fitted for teaching is a matter the College examines both at his first registration and later at entrance into the Upper Division and into practice teaching. Students proceed with the work of their final 2 years after evaluation of their records and upon favorable recommendations concerning their progress as prospective teachers.

Dental Hygiene

The requirements for admission to the Program in Dental Hygiene are similar to those for the Arts College. Chemistry is required and high school typing is recommended. Applicants should be between 17 and 35 years of age. A 1-year Program in Dental Assisting is now offered through the General College.

School of Nursing

Graduates of accredited high schools, at least 17 years of age and in good health, may apply for admission to the 1-year practical nursing program. Individual consideration will be given to otherwise well-qualified applicants who do not fully meet the stated admission requirements. Students may enter this program only in the fall quarter.

Other nursing programs are offered for students who have had some college work or are registered nurses.

Mortuary Science

This department admits any high school graduate in the top 10 per cent of his class. Those applicants who have a college aptitude rating of 35 or higher are usually admitted without further testing. The completion of basic units in high school science is recommended. Consideration will also be given otherwise well-qualified high school graduates who do not fully meet the stated admission requirements. Prospective applicants are urged to request individual counseling regarding opportunities in this field.

Other Admission Categories

Admission by Examination

A person 19 years of age or older, whether a graduate of a Minnesota high school or not, may apply for admission by examination. In most instances these tests are of the "objective" type and measure general aptitude for college work rather than knowledge of specific subject matter areas. Inquiries about procedures to follow should be directed to the Office of Admissions and Records.

Some persons under 19 years of age who have not graduated from high school may be admitted under a plan approved by the University, the Minnesota Council of School Executives, and the Minnesota High School Principals' Association. Such persons must be sufficiently mature to promise ready adjustment to university life and work and they must present outstanding high school records. Formal application, including letters of recommendation from the school principal and parents, is made to the Office of Admissions and Records. Personal interviews and comprehensive testing are also required.

All persons applying for entrance by examination should apply *more than a month in advance of the quarter they expect to enter.*

Admission with Advanced Standing from Other Institutions

Students with credits from other accredited colleges or universities (usually with a year or more of work) may, if admitted, enter with "advanced standing"—that is, with credit for acceptable courses satisfactorily completed. Well-qualified students who would be aided by tentative evaluation of their credits before transferring from other colleges may submit records of work completed and planned for such evaluation.

Applicants who have attempted any college study, satisfactorily or unsatisfactorily, must submit official transcripts, covering all work taken, from *every school attended.* They should make application and have all transcripts on file with the Office of Admissions and Records *more than a month before the beginning of the quarter they wish to enter.*

Students desirous of entering the University who have completed less than 1 year of study at another accredited college will often find it to their advantage to continue in that college, completing a successful year. Applicants who have had less than a year of college work must meet all requirements for entrance from high school and file their college records as well.

Advanced Standing Examinations

University students may earn credit for many courses by satisfactory completion of examinations. The University considers both credit and placement based on the Advanced Placement Tests of the College Entrance Examination Board.

Individual departments also offer examinations for credit and placement. These examinations should be taken during the first quarter at the University following relevant preparation or experiences (e.g., independent study, advanced work in high school, travel, and military experience). Additional information may be obtained from faculty advisers or the appropriate college office.

Admission as an Adult Special

Men and women who want individual courses or groups of courses to meet special personal needs may be considered for admission to the individual colleges as "adult special" students. Usually these students are 24 years of age or older, and of mature experience or they have Bachelor's degrees. Persons applying are not candidates for degrees, but subsequent admission to a degree program is possible on recommendation of the college. In such case credit earned as an adult special will be applied when possible. Admission is completed through the Office of Admissions and Records. Restrictions on admission of nonresident undergraduate students apply to admission of adult students. Applications should be filed well in advance of the quarter of entrance.

Admission to the Summer Session

The two terms of the Summer Session are open to high school graduates under regular entrance regulations, to students already admitted to the University, and to those who are or have been in attendance at any accredited collegiate institution and who are in good standing. There are no nonresident restrictions. Students with credit from other colleges who are not candidates for degrees here may enter without filing credentials; but their admission to Summer Session gives them no claim to attendance in regular session. Students beginning their University attendance

during the Summer Session who wish to continue in the regular academic year or who seek degrees here must apply for admission and submit credentials in the usual way.

Transfer from One College to Another

A student who wants to change at the University from one college, school, or campus to another must meet the requirements of the second. Application for transfer should be made at the Office of Admissions and Records on the campus where the student is currently or was last registered.

The Transfer Bureau of that office aids in such changes by securing clearances, appointments for counseling, re-evaluation of credits, and in other ways. Students should apply to the appropriate Transfer Bureau as far in advance as possible of the actual date of transfer.

Admission to Professional Schools and Colleges

The professional schools or colleges require from 1 to 3 years of "preprofessional" education before accepting students. You may take this preprofessional work at Minnesota or elsewhere. To take it at Minnesota, you must meet admission requirements of the college offering the work, and also the preprofessional requirements listed in its bulletin (which you can get from the Office of Admissions and Records). Preprofessional work from other institutions must meet the same requirements.

Preprofessional work (minimal preparation) for specific colleges may be taken at the Duluth Campus, at the Morris Campus (to the extent offered), or as follows:

Business Administration—2 years in the Arts College; or in the College of Agriculture, Forestry, and Home Economics; or in the Institute of Technology.

Dentistry—2 years in the Arts College.

Education—2 years in the Arts College, or in Agriculture or Home Economics, or in General College; or graduation from an accredited school of nursing.

Law—3 years in the Arts College.

Medical—3 years in the Arts College.

Medical Technology—2 years in the Arts College.

Nursing—6 quarters in the Arts College.

Occupational or Physical Therapy—2 years in the Arts College.

Pharmacy—1 year in the Arts College.

Public Health—Requirements vary with program. See section on School of Public Health.

Veterinary Medicine—2 years in the College of Agriculture, Forestry, and Home Economics.

Admission of Nonresidents of Minnesota

The University will receive the applications for admission of non-Minnesotans who have above-average promise, superior high school or college records, and special interest in this University. This implies no commitment to such applicants. Freshman applicants are also required to take the tests of the American College Testing program. Specific ACT test score admission thresholds will not be used at this time. College Entrance Examination Board test scores are requested when available. Since individual consideration by the faculty concerned is usually involved, any non-resident should apply promptly, i.e., *more than a month in advance of the desired entrance date.* See Fees also.

Admission to the Graduate School

If you have a Bachelor's degree or its equivalent from a recognized institution, you may apply for admission to the Graduate School. Your acceptance will depend on your undergraduate scholastic record, which must be high, on satisfactory character and professional qualifications, on recommendation by the department in which you want to take your major work, and on approval by the dean of the Graduate School.

Inquiries and applications should be sent to the dean of the Graduate School. You should send with the application forms 2 official transcripts of your undergraduate work and 1 of any graduate work you have taken. Applications must be submitted complete in every detail—2 official transcripts of all college work and, if required, test results, references, or other information—at least 4 weeks before the beginning of the quarter in which you wish to enter.

Orientation and Registration

Each quarter the University helps the new students to get acquainted with the campus through informal "orientation programs." Through them you meet other students, new and old; you learn your way around the campus, and identify buildings and offices of special importance to you. You are introduced to campus life and activities, you meet with faculty members, and you are helped with registration procedures. A notice giving dates of orientation programs is sent to each new student soon after his admission. See the University Calendar for over-all dates for orientation and registration.

Degrees and Courses

Degrees and certificates awarded by the University are of wide variety. They range from certificates in highly specialized areas, such as that in practical nursing, to graduate degrees that may require years of advanced study. Most Bachelor's degrees require 4 years (12 quarters) of work.

The pages that follow tell in general terms about the University's courses of study. Some of them are open to students without preprofessional training—these courses, or curriculums, are described in the next section of this bulletin. Others, described later, require students to complete preprofessional work first. Each college or major division of the University has its own bulletin—in it you will find outlines of degree requirements as well as full descriptions of courses and regulations. Write to the Office of Admissions and Records for the particular bulletin you want.

If you are in doubt as to the direction your education should take, the University's counseling services are available to help you. See section entitled Counseling Aids.

Degree Requirements

Degrees from the University of Minnesota are granted by the Board of Regents on recommendation of the faculty. Here are the steps leading to the granting of a degree.

First, a student must meet all the course, credit, and grade average requirements of the school, college, or division of the University in which he is enrolled.

Second, he must meet residence requirements. This means that he must have spent at least a year in regular daily work at the University, of which 2 quarters must be in his senior year (if he has only 1 year of residence, it must be his senior year). Extension courses (not correspondence courses) in the Twin Cities and Duluth count as residence credit. Some schools and colleges have additional residence requirements.

Third, he must meet all financial obligations to the University.

Fourth, he must attend commencement exercises at which his degree is conferred unless he is excused by the dean of his college. If he fails to attend, his diploma will be withheld for a year, or until he attends another commencement.

Programs Open to Beginning Freshmen

College of Science, Literature, and the Arts

A major goal of any University student is to strengthen his understanding of the world in which he lives and the people with whom he associates—to gain what is usually called "a liberal education." The Arts College offers a wide variety of programs that help toward these ends, and

at the same time start students toward occupations and careers. The College's counseling services and other guides in educational planning are available to aid in reaching these goals.

No two Arts College students follow precisely the same path toward their educational and career objectives. But all combine work in the humanistic areas, in the social studies, and in the natural sciences to provide sound general education, and build on this foundation a concentration—a "major"—in one or more of the 30 departmental areas the College offers.

Two degrees—a 4-year bachelor of arts and a 2-year associate in liberal arts—are offered by the College.

The Bachelor of Arts Degree—This 4-year program provides a knowledge of major areas of thought and an opportunity to specialize in one of the following fields:

American studies, anthropology, architecture, art, astronomy, bacteriology, biostatistics, botany, chemistry, classics, economics, English, geography, geology and mineralogy, German, history, humanities, international relations and area studies, journalism, linguistics and comparative philology, mathematics, music, philosophy, physics, physiology, political science, psychology, Romance languages, Slavic and Oriental languages, Scandinavian, pre-social work, sociology, speech and theater arts, pretheology, zoology.

If you do not find among these fields a "major" suitable to your interests and abilities, you may wish to plan an interdepartmental program—one tailor-made for your particular objectives. Such a program, by crossing departmental lines, may meet your needs better than a departmental major. (But all Arts College programs involve work in a number of departments.)

Preparation for entering the Graduate School, in the fields listed above, and in social work and library work is offered by the College. A professional major in journalism is also offered.

In addition, the College co-operates with other colleges to offer three combined arts-and-professional courses: *Arts and Medicine*, 7- or 8-year courses leading to B.A. and M.D. degrees; *Arts and Dentistry*, 7- or 8-year courses leading to B.A. and D.D.S. degrees; *Arts and Law*, a 6½-year course leads to B.A. and LL.B. degrees.

In three other programs, a student may complete all B.A. requirements concurrently with other degree requirements: *Arts and Architecture*, a 6-year course leading to B.A. and B.Arch. degrees; *Arts and Dental Hygiene*, a course of about 5 years leading to B.A. and G.D.H. (graduate dental hygienist) degrees; *Arts and Education*, a course of about 4½ years leading to B.A. and B.S. in education degrees.

Professional Training—A basic liberal education is required in preparation for work in a number of the University's professional schools—1, 2, or 3 years of Arts College work. Professional curriculums requiring this kind of preparation are those in the Medical School, Law School, School of Dentistry, School of Business Administration, School of Nursing, College of Pharmacy, and College of Education (except for students planning to enter art, business and distributive, industrial arts, music, or physical education). Specialized courses in nursing education, public health nursing, medical technology, and occupational and physical therapy also require preparatory work.

The 2-Year Associate in Liberal Arts Degree—This recognition of the completion of 2 years of satisfactory work in the College is intended for 2 groups of students: Those who plan to attend the University for 2 years only; and those who, though working toward a Bachelor's degree, desire formal recognition of the completion of 2 years' work.

To earn this degree, a student must ordinarily earn 90 credits in 6 or 7 quarters of residence, and meet specific requirements in English and in 3 of these 4 fields: foreign languages, humanities, social sciences, and natural sciences. Within these limits, you have a broad choice from among hundreds of freshman and sophomore Arts College courses, and you and your adviser design your program to meet your individual interests.

General College

General education, in which the General College has for years been a leader, aims essentially to produce well-rounded individuals—men and women who can understand the intricate patterns of the modern world, who can meet daily problems with a sound sense of values, who can live full and responsible lives.

A broad 2-year program of courses in the General College, leading to the associate in arts degree, is designed to help students toward this goal. As a student in this program you may, if you wish, combine with the more general courses certain courses to prepare you for specific occupations which do not require professional training, such as business, dental assistant, general office work, practical nursing, recreation activity leadership, retailing and selling.

The associate in arts degree is granted when you complete 2 years of work and achieve satisfactory standing in a comprehensive examination covering the general education program. If you wish to transfer to another college of the University, your work will be evaluated by the college of your choice. If it has been of satisfactory caliber, you ordinarily will be admitted with advanced standing. The amount of advanced standing will depend upon the program into which you transfer and will range from full value in programs requiring mostly liberal arts work to relatively small amounts in programs requiring many specialized courses and relatively few liberal arts electives.

The General College system of counseling and guidance for students is one of the major factors in the success of its general education program. Through this system, including carefully designed testing of individual abilities and aptitudes, advisers can help students plan course programs and extracurricular activities of greatest interest and personal benefit. General College counselors and instructors are always available to help students with problems in any way affecting their adjustment to university life.

Institute of Technology

The Institute of Technology offers various programs leading to the Bachelor's degree in its five colleges and schools. The colleges and schools and the degree curriculums they offer are tabulated below. Both 4-year and 5-year curriculums are available, as described below.

College of Engineering—Aeronautical, agricultural, civil, electrical, and mechanical engineering; mathematics.

School of Architecture—Architecture.

School of Chemistry—Chemical engineering, chemistry, metallurgy.

School of Mines and Metallurgy—Geological engineering (mining or petroleum), geophysics, metallurgical engineering, mining engineering (mining or petroleum).

School of Physics—Physics.

Major curriculums in the College of Engineering, in the School of Mines and Metallurgy, and in the Department of Chemical Engineering and the Department of Metallurgy of the School of Chemistry, are 5-year curriculums. Students who attain the necessary standards of performance and who desire to proceed to graduate work may obtain a bachelor of science degree by petition at the end of 4 years. The student may then begin a graduate program in his fifth year.

The School of Architecture offers a 5-year curriculum in IT; also, a 6-year curriculum in co-operation with the College of Science, Literature, and the Arts. The Department of Chemistry and the School of Physics offer 4-year curriculums.

Certain engineering departments, including mechanical and electrical, permit specified work in industrial engineering to replace some of the optional engineering study of the 5th year and thereby provide an alternative path to the professional degree.

A co-operative work-study program in mechanical engineering providing practical work experience in conjunction with regular classes and laboratory work is available through co-operation with nearby industrial concerns. During part of their collegiate program students in the work-study curriculum are on a 12-month basis and spend alternative quarters in industry. While on the work assignments students are paid at regular rates by the company.

Also offered are combined curriculums with the Graduate School, the School of Business Administration, the Law School, and the College of Education. In some cases this may lead to two degrees. For additional details on the various programs see the *Bulletin of the Institute of Technology*.

The Institute of Technology divides its undergraduate curriculums into a Lower Division and an Upper Division. Upon satisfactory completion of the requirements of the Lower Division, a student may, upon application, be awarded a Certificate in Science. For further information regarding this program and regarding admission to the Upper Division, see the *Bulletin of the Institute of Technology*.

University of Minnesota, Duluth

Four degrees are available at the Duluth Campus—the bachelor of arts (B.A.); the bachelor of science (B.S.); the associate in arts (A.A.); and the master of arts (M.A.). Preprofessional programs for transfer to other campuses are available.

The M.A. degree is available under Plan B (no thesis) in education, in educational psychology (high school guidance), or in curriculum and instruction. It has been authorized by the Graduate School and is an integral part of the graduate program offered by the University.

Four-year courses leading to a Bachelor's degree offer majors in art, biology, botany, business and economics, business education, chemistry, elementary education, English, French, geography, geology, general science, German, history, home economics, industrial education, mathematics, music, nursery-kindergarten-primary education, health and physical education for men or for women, physics, political science, psychology, social science, sociology, speech, speech correction, and zoology. Minors in air science, art history, humanities, language arts, philosophy, recreation, and school health education also are offered. Students planning to teach in the secondary schools combine specific courses in education with the major chosen.

The 2-year course leading to the associate in arts degree is a general education program in which each student, consulting with an adviser, chooses courses to fit his individual need.

Preprofessional courses, designed to meet requirements of professional schools, are available in the fields of agriculture, agricultural education, dentistry, engineering, fishery and wildlife management, forestry, journalism, law, medicine, medical technology, nursing, pharmacy, social work, theology, and veterinary medicine.

University of Minnesota, Morris

No degrees will be offered at the conclusion of the 1961-62 academic year. The present planning provides for 2 years of college level work. Course offerings can be readily utilized for meeting the first 2-year requirements toward degrees in other colleges and toward degrees that are planned later at the University of Minnesota, Morris. Courses offered are designed to meet the preprofessional requirements of professional schools in many fields. Consult the *Bulletin of the University of Minnesota, Morris*.

College of Agriculture, Forestry, and Home Economics

This College through its departments in agriculture and its schools of forestry and home economics—all on the St. Paul Campus of the University—offers Bachelor's degrees in a wide range of subject areas and, in some fields, advanced professional degrees. The 4-year courses that lead to the B.S. degree or its equivalent are:

Agriculture—Agricultural science, agricultural education, agricultural business administration, agricultural journalism, dairy industries, food technology, fishery and wildlife management, landscaping, science specialization.

Forestry—Forest resources management, building materials merchandising and light construction, forest products engineering.

Home Economics—General home economics, dietetics and food service management, home economics education (teaching and extension), home economics in business (foods and nutrition, textiles and clothing, related art), home economics with journalism minor (foods, related art, textiles and clothing), home economics and nursery school education, preparation for research in (a) experimental foods, (b) nutrition, (c) textiles and clothing.

Students anticipating admission to professional study in the College of Veterinary Medicine may secure the 2-year preprofessional curriculum requirements in this College.

In some fields, a fifth year of work leads to an advanced degree. In agricultural education and home economics education a student may earn a master of education degree.

In addition, a 60-credit program leading to a certificate (Technical Certificate Program in Agriculture) is offered by the College to students interested in a terminal, collegiate program leading to farming or related activity.

College of Education

If your interest is in school work, the College of Education offers you a 4-year program leading to a B.S. degree and a Minnesota teaching certificate.

The variety of courses is virtually as wide as the combined offerings of many of the University's divisions. You can prepare for teaching in kindergarten and primary grades, in elementary, junior high, or high school grades. You can specialize in academic subjects such as English, Latin, French, Spanish, German, social studies, mathematics, science, or speech . . . or in special fields such as agriculture, art, business education, home economics, industrial arts, physical education and coaching, health and hygiene, music, or teaching of handicapped children. Some courses of study give you not a one-subject major but a broad field such as natural science.

There are also 4- and 5-year programs for teachers of speech correction and for those interested in public health work, public health nursing, nursing education, and recreational leadership.

Master of education degrees, involving a fifth year of professional study, are offered in mathematics, physical education for men, physical education for women, art education, music education, nursing education, home economics education and agricultural education.

School of Dentistry

Program in Dental Hygiene—Beginning only in the fall, this program for young women comprises 2 academic years of work in the School of Dentistry with concurrent courses in the College of Science, Literature, and the Arts. The program qualifies its graduates to work in dental offices and public health agencies. Upon receiving the graduate dental hygienist (G.D.H.) degree, the graduate must obtain a license by passing an examination in the state in which she wants to work.

When students have completed the program, as specified in the *Bulletin of the School of Dentistry*, with a C average they may enter the College of Science, Literature, and the Arts. They may then qualify for the bachelor of arts (B.A.) degree provided that they fulfill the degree requirements of the Arts College.

Program in Dental Assisting—Offered jointly by the School of Dentistry and General College, this program prepares a young woman to perform a variety of duties as a dental assistant. The student's courses will prepare her to be a receptionist, make appointments, keep books, and assist the dentist at his chair. Students will register in General College, and the 1-year program qualifies them for a certificate in dental assisting. Credits earned during this year may also be applied toward requirements for the 2-year associate in arts (A.A.) degree. The additional year of work may be taken before or after the year in dental assisting.

School of Nursing

Practical Nursing—A certificate in practical nursing is granted students who complete the 4-quarter practical nursing program. This program is designed to prepare practical nurses to give nursing service with supervision and guidance of professional nurses and doctors. Students completing the curriculum are eligible to take the state board examination given by the Minnesota Board of Nursing.

Practical Nursing and Home Management—For workers in rural health, the School co-operates with the School of Agriculture in providing a 6-quarter program. Those who finish it are prepared to give practical nursing service and to assist with the management of homes. Students must start this program in the fall quarter. Admission requirements are those for the School of Agriculture.

Mortuary Science

This course for young men and women may be entered at the beginning of any quarter or Summer Session. There are 2 plans for instruction—Plan A which consists of 9 academic quarters and Plan B which consists of 6 academic quarters. The work in both Plan A and Plan B is in a prescribed curriculum. Graduates upon completion and awarding of the degree—associate in mortuary science—are eligible to write the state board examination in those states in which they have fulfilled the general and mortuary science educational requirements. Upon successful completion of state board requirements, graduates are eligible for licensure.

Programs Requiring Previous College Work

This section of the bulletin tells about University degree programs for which preparatory work is necessary. For complete information on any of the courses, you should get the bulletin of the school or college in which the work is offered.

Medical School

Course in Medicine—This program of study leads to the degree doctor of medicine (M.D.), and provides basic preparation for the practice of medicine for public health service, for medical teaching, and for medical research. The course requires at least 3 years of preparatory college work and 4 years in the Medical School.

Although 3 years of liberal arts and science education constitutes the minimum required for admission to the Medical School, the Admissions Committee gives preference to candidates with broad and strong undergraduate preparation. A thorough general education is of great value in the development of a physician and the equivalent of 4 academic years of liberal arts preparation, with a B.A. or B.S. degree program, is considered preferable to 3 years. The *Bulletin of the Medical School* gives details of entrance requirements, suggests appropriate course sequences, and outlines application procedures. Students interested in medicine are also encouraged to consult the annual "Admission Requirements" book of the Association of American Medical Colleges and counseling personnel in the office of the dean of the Medical School.

Medical Technology Course—This course, 4 years leading to a B.S. degree, provides basic preparation for work in clinical and research laboratory procedures used in hospitals, clinics, physicians' offices, and for teaching in training programs for medical technologists.

After 2 years in the Arts College, the student transfers to medical technology to complete the requirements in advanced science courses and the technical training period of 1 year in the laboratories of the University Hospitals. The last year includes clinical experience in hematology, bacteriology, serology, electrocardiography, basal metabolism tests, blood banking procedures, tissue preparation, and chemical analyses of blood and other body fluids.

Physical Therapy Course—A 4-year curriculum, open to both men and women students, leading to a B.S. degree. The program is approved by the Council on Medical Education and Hospitals of the American Medical Association. Graduates are eligible for registration with the American Registry of Physical Therapists and membership in the American Physical Therapy Association, the national professional organization. Qualified physical therapists administer physical therapy modalities under the direction of physicians and are employed in hospitals, rehabilitation centers, clinics, schools and other specialized institutions. After 2 years of Arts College work, the student enters the professional course in the College of Medical Sciences and spends 6 quarters in theory and practical application of physical therapy procedures, including a minimum of 600 clock hours devoted to practical experience in physical therapy departments affiliated with the University.

Occupational Therapy Course—Under medical supervision, graduates of this course are qualified to provide patients with therapeutic activities including arts, crafts, educational subjects and recreation. They work in rehabilitation centers, general, neuropsychiatric and children's hospitals, tuberculosis sanatoriums and in specialized institutions such as schools for the blind, deaf, or mentally retarded. After 2 years in the Arts College, the student transfers to the professional course in the College of Medical Sciences where he spends 4 quarters studying theory, advanced sciences, and practical application. At least 9 months of clinical practice are required during the senior year. This 4½-year course leads to a B.S. degree and is approved by the Council on Medical Education and Hospitals of the American Medical Association.

Continuation Study Program—The continuation course program gives the practicing physician and his associates in allied fields the opportunity of keeping abreast of latest developments in their professions.

The continuation courses, which last from 1 day to 2 weeks, are administered by the General Extension Division, the Center for Continuation Study, and the director of the Department of Continuation Medical Education. Courses include continuation study for practicing physicians in psychiatry, neurology, pediatrics, radiology, obstetrics and gynecology, internal medicine, surgery, dermatology, and others. Courses are also available in hospital administration, medical technology, dietetics, and nursing education.

School of Nursing

Professional Nursing Curriculum—Sixteen quarters of college work are necessary to earn the degree of bachelor of science in nursing. The first 6 quarters (2 academic years) may be taken in the Arts College or at any approved college offering the necessary biological sciences, social studies, and other general education courses. Ten quarters spent in the School of Nursing are devoted to the professional major. Professional nursing is open to college graduates who have had satisfactory work in social and biological sciences, preferably sociology, psychology, chemistry, and zoology. Beginning fall quarter 1961, the professional nursing program will be shortened to approximately 4 academic years. Students transferring into this program from other colleges will need to do so at the end of 1 academic year.

Bachelor of Science in Nursing Education—The B.S. degree program with a major in nursing education is offered jointly by the School of Nursing and the College of Education (the student registers in the College of Education). A minor may be taken in a clinical field of nursing such as medical, surgical, operating room, obstetric, pediatric, or psychiatric nursing.

Bachelor of Science in Nursing Administration—This program prepares graduate professional nurses for positions such as team leader, head nurse, or supervisor. A minor may be taken in a clinical field of nursing such as medical, surgical, operating room, obstetric, pediatric, or psychiatric nursing.

Bachelor of Science in Nursing—Beginning fall quarter 1962, registered nurses desiring a college program at the baccalaureate level may enter a general nursing program.

Master's Program in Nursing Education—The program leading to the master of education degree in nursing (M.Ed.) is designed to prepare professional nurses for faculty positions in schools of nursing, in-service education co-ordination, or educational positions in governmental and other organizations. This program is open to qualified professional nurses who have completed a baccalaureate program in an accredited college or university.

Master's Program in Nursing Administration—The program which leads to the master of nursing administration degree (M.N.A.) is designed to prepare professional nurses for positions such as director, assistant director, in-service co-ordinator, or supervisor in hospital nursing services. This program is open to qualified professional nurses who have completed an accredited baccalaureate program.

School of Public Health

Advanced courses for specialists in a number of public health fields lead to Master's or Bachelor's degrees. Liberal training stipends for suitably qualified students are available directly from the U. S. Public Health Service or through the School of Public Health.

Public Health Administration—A year or more of graduate work in public health theory and practice, open to physicians, dentists, and veterinarians, leads to the M.P.H. degree. Students with a broad scientific background may work toward an M.S. or Ph.D. in epidemiology. A limited number of fellowships are available for qualified epidemiology students under the National Institutes of Health Training Grant.

Environmental Sanitation—A year or more of graduate work in sanitation, open to graduate engineers with suitable experience who want to go into public health programs, leads to the M.P.H. degree. Suitably qualified sanitarians may also be admitted. Students with a broad scientific background may work toward an M.S. or Ph.D. in environmental sanitation.

Public Health Nursing—The M.P.H. degree may be earned by nurses who have had suitable undergraduate preparation and experience in the public health nursing field. Nurses with less suitable undergraduate preparation and experience may be admitted for the M.S. degree on an individual basis.

The B.S. degree program with a major in public health nursing is available to properly qualified graduate nurses. Supplementary preparation in public health nursing is also available for graduate nurses who hold a baccalaureate degree but lack approved undergraduate preparation in this field of nursing.

Health Education—College graduates can earn the M.P.H. by 4 quarters or more of work in community health education. They must have adequate background in biological sciences, social sciences, and education, and at least 3 years of experience in public health.

Hospital Administration—A 2-year program leads college graduates with adequate training in economics, medicine, or nursing to the degree, master of hospital administration. One academic year is spent in formal instruction, and a full calendar year in a hospital as an administrative resident. Suitably qualified students may continue their studies toward a Ph.D. degree.

Biostatistics—Students with a broad scientific background may work toward an M.P.H. in vital statistics or toward an M.S. or Ph.D. in biostatistics. A limited number of fellowships is available for qualified biostatistics students under the National Institutes of Health Training Grant.

School of Business Administration

Admission to the School is earned by satisfactory completion of the 2-year prebusiness program. This program emphasizes a general background, along with specific preparation for the business curriculum. The program may be taken in a junior college, a liberal arts college, or in certain technical schools. At the University of Minnesota, it may be taken in the College of Science, Literature, and the Arts, the Institute of Technology, or the College of Agriculture, Forestry, and Home Economics.

On this background the School offers 2 years of professional training leading to the bachelor of science in business degree in the regular or in the accounting program. The general program consists of a core group of courses which comprises the fundamentals of business management, a background of economics, and business policy. The student may, in addition, choose electives in one or more fields, including industrial management and administration, statistics, industrial relations, insurance, transportation, accounting, finance, marketing, law, office management, and economics. Opportunities for internship experience are available in several of the areas listed above. The B.S. in Business program enables the student to plan for fields offered at the University, representing special business opportunities. This program also enables the superior student to enter the graduate program for a Master's degree in several specialties.

Preparation for positions as economic analysts or statisticians—in government service or private industry—is offered in two special sequences that lead to the degree of B.S. in economics.

Certain combined programs are available for students seeking professional training in another field, in addition to business administration. These combinations require additional time but lead to two degrees. Such combination programs have been arranged with the Institute of Technology and the College of Pharmacy.

Qualified students with a Bachelor's degree in liberal arts or in a technical field may prepare for management responsibilities in the program for the degree, master of business administration. Students interested in professional preparation for industrial relations may prepare for the degree, master of industrial relations.

School of Dentistry

Dentistry Program—Two years of preidental course work in an accredited liberal arts college is required for admission to the 4-year program leading to the doctor of dental surgery (D.D.S.) degree. A grade average of C or higher is required in all preidental courses, and must include at least 12 quarter credits of English, 10 quarter credits of zoology or biology, 12 quarter credits of physics, 12 quarter credits of inorganic chemistry including semimicro qualitative analysis, and 8 quarter credits of organic chemistry to include both the aliphatic and aromatic series. The science courses must include both lectures and laboratory work. In addition, a dental aptitude examination is required of all applicants. Further details concerning entrance requirements and suggestions regarding appropriate elective courses can be found in the *Bulletin of the School of Dentistry*.

Continuation Study Program—The School of Dentistry regularly offers a series of continuation courses in various phases of dentistry, dental assisting, and dental hygiene. These courses are intended to meet the needs of the profession for special material not covered in the undergraduate curriculum and in new developments in research and clinical procedures. Sessions usually are 3 days to 1 week in duration, and in many areas clinical practice is included. Special brochures listing courses, dates, and costs are available to those requesting that their names be placed on the mailing list. Inquiries should be mailed to the School of Dentistry or to the Center for Continuation Study, University of Minnesota, Minneapolis 14.

Law School

The Law School offers the professional degree of bachelor of laws (LL.B.) which qualifies one for bar examinations and admission to practice. The course of study in the Law School consists of 3 years plus 15 quarter credits of law, usually taken in 1 summer after the first or second year. Admission to the Law School requires:

1. A bachelor of arts degree or its equivalent; or
2. Completion of a special 3-year liberal arts program in S.L.A. will qualify the student for the B.A. degree from the Arts College upon successful completion of his first year of law.

Details with respect to the special 3-year liberal arts program, admission requirements generally, and the Law School may be found in the *Bulletin of the Law School*. Attention is directed to the fact that a student's prelaw scholastic record and the results of the Law School Admission Test given by the Educational Testing Service at Princeton, New Jersey, will be considered in determining his admissibility.

College of Pharmacy

The art and science of pharmacy deals with the preparation, compounding, and dispensing of medicinal agents and the study of their chemistry, pharmacological properties, and therapeutic applications.

The work of the prepharmacy year may be taken at any accredited institution. If a student wishes to spend still another year at an accredited school before enrolling in the College of Pharmacy and meets the scholastic requirements for admission to this professional college (see *Bulletin of the College of Pharmacy*), he may complete the prescribed course in pharmacy in 3 years provided he has completed courses in physics, biology (zoology and botany), organic chemistry, general economics, and accounting, equivalent to those described in the *Bulletin of the College of Pharmacy*.

Upon the satisfactory completion of all the courses of the prescribed curriculum, the student will qualify for the B.S. in pharmacy degree.

The College also offers an optional combined 5- or 6-year course in pharmacy and business administration. Evidence of above-average academic ability is required for admission to this course.

College of Veterinary Medicine

Training in veterinary medicine requires a minimum of 2 years of college level study in pre-veterinary curriculum as prescribed in the *Bulletin of the College of Agriculture, Forestry, and Home Economics* and the *Bulletin of the College of Veterinary Medicine*. Upon completion of the preveterinary requirements, the student may apply for admission to the 4-year professional curriculum. Satisfactory completion of the professional curriculum leads to the degree of doctor of veterinary medicine (D.V.M.).

It is desirable that prospective students have farm experience prior to entering the College of Veterinary Medicine.

Graduates in veterinary medicine are prepared for private practice, federal, state, and municipal government employment in disease control work, teaching and research, and for service in the U. S. Public Health Service or as veterinarians in the Armed Forces.

University College

This College draws upon the entire University for its courses. It has no fixed curriculum. Its purpose is to provide flexibility in the educational program of the undergraduate who finds none of the standard curriculums of the other schools and colleges suited to his interests or particular objectives. Such a student, with the approval of the University College Committee, may arrange a study program to fit his individual needs. Upon completing it he is granted either a B.A. or a B.S. degree. Students ordinarily are not accepted until they have completed 1 or 2 years of college work.

Information about University College is available at the University College Office, 225 Johnston Hall, University of Minnesota, Minneapolis 14.

Graduate School

Students who have Bachelor's degrees from approved schools may apply for admission to graduate work leading to the Master's and Ph.D. (doctor of philosophy) degrees. See the *Bulletin of the Graduate School* for statements of requirements in the many areas of graduate study. Beyond the Master's degree, the Graduate School offers the specialist in education certificate in the fields of educational administration, school psychological services, and elementary school administration.

Graduate programs leading to the master of arts degree with majors in education, in educational psychology, and in curriculum and instruction have been authorized at the Duluth Campus. All graduate students taking these programs are regularly enrolled in the Graduate School.

Inquiries about graduate work should go to the dean of the Graduate School, 316 Johnston Hall, University of Minnesota, Minneapolis 14.

Other Study Opportunities in the University

Summer Session

Two terms of regular University courses are offered each summer. In each term you can take about half as many credits or courses as in fall, winter, or spring quarter; in the 2 terms you can complete a full quarter's work.

Most major divisions of the University offer summer courses.

Courses are offered in Minneapolis, St. Paul, and Duluth and at the Forestry and Biological Station in Itasca State Park.

General Extension Division

Evening and Special Classes—Evening and special classes are available to adult students in the Twin Cities, Duluth, and other communities in the state. They are of collegiate level and include many of the regular University subjects, as well as special courses designed to meet specific needs or interests. There are no general admission requirements; classes are open to anyone who, through education, experience, or maturity, is able to handle college level work. There are specific admission requirements for University degree programs, some of which can be completed entirely in evening classes, and for Extension certificate programs. Address: 57 Nicholson Hall, University of Minnesota, Minneapolis 14.

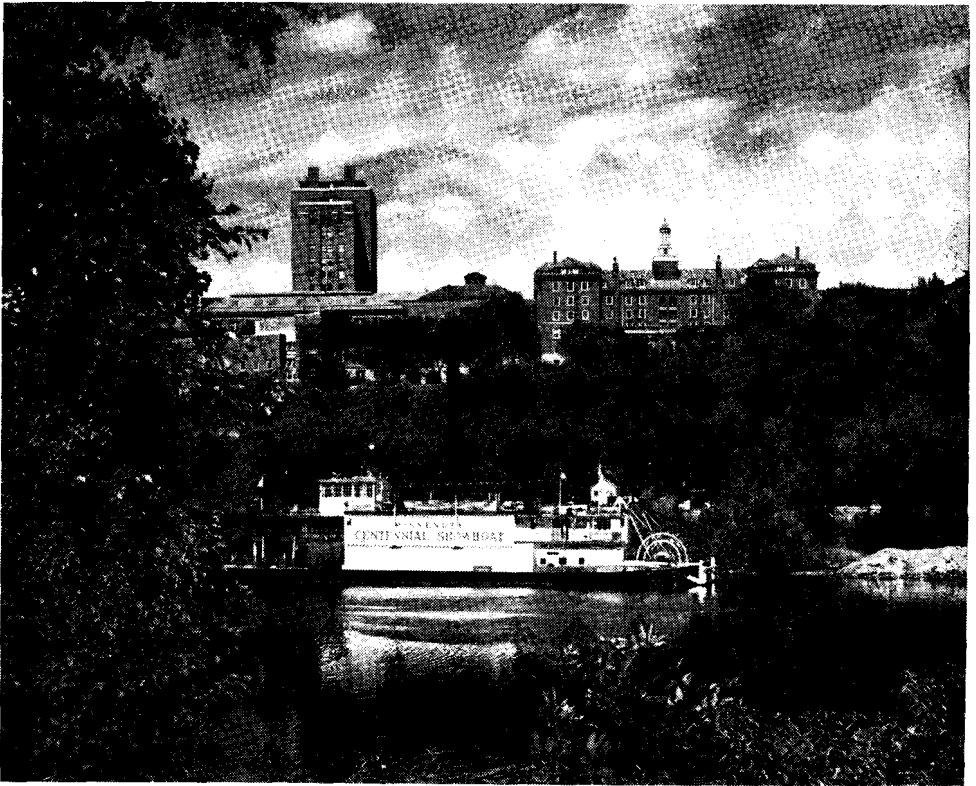
Lecture Series—Each year the General Extension Division presents several public lecture series on topics of general interest. These discussions, by the country's outstanding scholars, are planned on a series basis and tickets to individual lectures are not available. Special student and faculty rates are stated on the formal announcement of each series. Inquiries should be made at 57 Nicholson Hall.

Correspondence Study—The Correspondence Study Department offers high school, collegiate, and general courses by home study, designed to be used toward university degrees or certificates, or for occupational or personal interests. Specific limitations as to the amount of degree credit allowed for correspondence work vary as to the degrees concerned. Correspondence courses may be commenced at any time and are open to any qualified student, no matter where he lives. Address: 251 Nicholson Hall, University of Minnesota, Minneapolis 14.

Center for Continuation Study—The Center is a special self-contained unit, with living and teaching facilities, on the Minneapolis Campus. Short courses, conferences and institutes, lasting from a few days to several weeks, are offered—mostly at an advanced level—for men and women in professional, business, and industrial fields. Address: Center for Continuation Study, University of Minnesota, Minneapolis 14.

Reserve Officers Training Corps

The ROTC, through its three services—Army, Navy, and Air Force—gives college men students an opportunity to combine military or naval training with their academic work. Students are eligible for ROTC enrollment if they are registered in academic courses leading toward degrees, if they are United States citizens, and if they meet physical and other qualifications. The general requirements of the three services, and their special characteristics are described in the *University Bulletin of the Army-Navy-Air Force ROTC*. An Air Force ROTC unit is located on the Duluth Campus.



The Minneapolis Campus is on the banks of the Mississippi River.

UNIVERSITY CALENDAR

Academic Year, 1961-62

Fall Quarter

July	31-September 22	
September	4	Monday
September	14	Thursday
September	15	Friday
September	15-23	
September	22	Friday
September	25	Monday
September	28	Thursday
September	29	Friday
October	12	Thursday
October	14	Saturday
October	28	Saturday
November	2	Thursday
November	11	Saturday
November	23	Thursday
November	24-25	Friday, Saturday
December	7	Thursday
December	8-14	
December	14	Thursday
December	16	Saturday

Fall registration. Orientation program for new students. Dates for the various colleges will be announced in mailed instructions. Students are urged to register early. It is expected that all students who can do so will register in August.

Labor Day, holiday

Fall quarter fees due for students registered through September 8

Last day for new undergraduate applicants (freshman and advanced standing) to complete admission for fall quarter

New Students' Camps, September 15-17; New Students' Parents' Day, September 17; Welcome Week, September 17-23. Details announced in instructions issued at orientation.

Last day for registration and payment of fees for the undergraduate colleges

Fall quarter classes begin, 8:30 a.m. Minneapolis, upper Duluth, and Morris; 8 a.m. St. Paul and lower Duluth

Opening convocation, 11:30 a.m., IV hour classes excused (except Duluth and Morris)

Last day for registration and payment of fees for the Graduate School and for teachers in service

Columbus Day, holiday

Homecoming Day (Duluth)

Homecoming Day (Minneapolis)

Senate meeting, 3:30 p.m.

Veterans Day, holiday

Thanksgiving Day, holiday

Classes excused (except Medical School and College of Veterinary Medicine)

Senate meeting, 3:30 p.m.

Final examination period

Commencement, 8 p.m.

Fall quarter closes

Winter Quarter

December	25	Monday
December	26	Tuesday
December	28-29	Thursday, Friday
January	1	Monday
January	2	Tuesday
January	5	Friday
February	1	Thursday
February	11-17	
February	12	Monday
February	15	Thursday
February	22	Thursday
March	8	Thursday
March	9-10 and 12-15	
March	15	Thursday
March	17	Saturday

Christmas Day, holiday

Winter quarter fees due for students in residence fall quarter

Orientation program; registration for new students in all undergraduate colleges

New Year's Day, holiday

Registration resumes. Winter quarter fees due for new students in all undergraduate colleges. Winter classes begin.

Last day for registration and payment of fees for the Graduate School and teachers in service

Senate meeting, 3:30 p.m.

University of Minnesota Week

Lincoln's Birthday, holiday

Charter Day Convocation, 11:30 a.m., IV hour classes excused

Washington's Birthday, holiday

Senate meeting, 3:30 p.m.

Final examination period

Spring quarter fees due for students in residence winter quarter in undergraduate colleges

Commencement, 8:30 p.m.

Winter quarter closes

Spring Quarter

March	22-23	Thursday, Friday
March	26	Monday

Orientation program, registration and payment of fees for new students in all undergraduate colleges

Spring quarter classes begin

March	30	Friday	Last day for registration and payment of fees for the Graduate School and for teachers in service
April	20	Friday	Good Friday, holiday
April	26	Thursday	Senate meeting, 3:30 p.m.
May	24	Thursday	Cap and Gown Day Convocation (Minneapolis), 11:30 a.m., IV hour classes excused
May	30	Wednesday	Memorial Day, holiday
May	31	Thursday	Cap and Gown Day Convocation (Duluth), 11 a.m., IV hour classes excused
June 2 and 4-8			Senate meeting, 3:30 p.m.
June	3	Sunday	Final examination period
June	8	Friday	Baccalaureate service, 3 p.m.
June	9	Saturday	Commencement (Duluth), 8 p.m.
			Spring quarter closes
			Commencement (Minneapolis), 8 p.m.

General Extension Division, 1961-62

Fall Semester

September	11	Monday	Registration for fall semester begins
September	20	Wednesday	Last day for registration, fall semester
September	25	Monday	Fall semester classes begin
October	12	Thursday	Columbus Day, holiday
November	11	Saturday	Veterans Day, holiday
November	23	Thursday	Thanksgiving Day, holiday
December	16	Saturday	Christmas recess begins
December	25	Monday	Christmas Day, holiday
January	1	Monday	New Year's Day, holiday
January	2	Tuesday	Classes resume
January	29	Monday	Spring semester registration begins
February	3	Saturday	Fall semester classes close

Spring Semester

February	7	Wednesday	Spring semester registration closes
February	12	Monday	Lincoln's Birthday, holiday
February	13	Tuesday	Spring semester classes begin
February	22	Thursday	Washington's Birthday, holiday
April	20	Friday	Good Friday, holiday
May	30	Wednesday	Memorial Day, holiday
June	9	Saturday	Spring semester classes close

A few Extension classes are offered on the quarter basis on the same schedule as day school with registration beginning 2 weeks preceding the opening of classes for the fall quarter and 1 week preceding the opening of classes for the winter and spring quarters.

Correspondence study courses may be started at any time.

Summer Session

First Term

1961			1962	
June	12	Orientation and registration for first term	June	11
June	13	First term classes begin 8 a.m. Minneapolis and Duluth, 7:30 a.m. St. Paul; fees due	June	12
July	4	Independence Day, holiday	July	4
July	13	Commencement, 8 p.m.	July	12
July	15	First term closes	July	14

Second Term

July	17	Registration and payment of fees for second term	July	16
July	18	Second term classes begin	July	17
August	17	Commencement, 8 p.m.	August	16
August	19	Second term closes	August	18

Special Services for Students

University Health Service

Student health is a major concern of the University as well as of the individual student.

On the Minneapolis Campus complete facilities are provided in the University Health Service building adjacent to the University Hospitals.

On the St. Paul Campus, general medical and infirmary-type hospital care is provided in the Health Service building located on Cleveland Avenue. St. Paul Campus students also have access to the Minneapolis Campus facilities.

Services at Duluth and Morris include consultation, physical examination, care of illnesses and injuries, immunizations, laboratory tests, physiotherapy, and some medication. The Health Service at Duluth is located in the Residence Hall Units A.

Incidental Fee Benefits, Minneapolis and St. Paul Campuses

Medical care and health counseling are provided for all students. No charge is made to students for medical examinations, for general care, or for consultations with a specialist: on physical or mental health problems. Medical care is given to a hospitalized student without charge, except for surgery. Students also receive specialized services, such as allergy testing and treatment, eye examinations, and laboratory services. Physical therapy and X-ray therapy are provided up to a limit of \$30 per quarter. Charges are made on a cost basis or less for drugs, glasses, and dentistry.

Hospitalization—It is the practice of the Health Service to admit to the hospital all students (especially those whose homes are outside the Twin Cities) who are sufficiently ill to require bed rest, even for short periods of time. If you live in a dormitory or rooming house, you usually cannot receive proper nursing care, adequate meals, or sufficient medical care if you remain in your room during an illness. The duration of your illness can be shortened in many instances if treatment is begun early in the course of the disease, thus saving considerable time through prompt hospitalization. Hospitalization for obstetrical care is not included.

Students without Hospital Insurance—Such students are entitled to seventy (70) free days of hospitalization each quarter including all extras (except private duty nursing). However, free hospitalization for the same illness is limited to 70 days. Hospitalization benefits do not cumulate from quarter to quarter. Hospitalization coverage for tuberculosis and for mental illness is limited to 30 days.

Students with hospital insurance who feel they have adequate hospital insurance may choose to take a refund on the hospitalization portion of the incidental fee which is \$2 per quarter. Students accepting this refund may be hospitalized at the Health Service but will pay the full cost of hospitalization and themselves collect from their insurance company. To obtain the refund, students must present their fee statement and proof of insurance to the business office of the Health Service during the first 10 days of each quarter.

Students with hospital insurance may wish to have additional coverage. They may do so by not taking the \$2 refund. Then if hospitalized, the Health Service will bill the insurance company and after receipt of this payment the Health Service will pay the remainder of the hospital bill for as many days as the two programs provide. If the insurance payment plus the Health Service allowance for hospitalization overpay the bill, a credit for the difference will be set up in the student's name. This credit may be used for any future charges of the Health Service except dentistry, glasses, or drugs. If not used, this credit will revert to the Health Service when the student leaves the University.

Foreign Student Health Fee Benefits

Experience has shown that many foreign students have illnesses or accidents that require prolonged hospitalization, the costs of which far exceed the benefits of the incidental fee. Since noncitizens are not eligible for city, county, or state hospital care, great hardships to some students have occurred. To avoid such hardships foreign students are now required to carry additional health protection at a cost of \$5 per quarter unless they have acceptable health insurance, by which they may be eligible for exemption from this fee. Any student who thinks he might qualify for this exemption should apply within 10 days of the opening of the quarter to the business office of the Health Service.

Optional Plan for Supplemental Blue Cross-Blue Shield Coverage

Students who choose to be covered under the special student Blue Cross-Blue Shield Plan will have added protection for those services not available at the University Health Service. These are:

1. Hospitalization and medical-surgical care for illness or accidents where the student is unable to come to the University Health Service for care.
2. Hospitalization and medical-surgical care when hospitalized during the summer months when the student is not eligible for care through the University Health Service.
3. Surgical fees during the school year if hospitalized in University Hospitals.

Dependents—*Dependents are not eligible for care through the University Health Service.* Therefore, the benefits of the Blue Cross-Blue Shield program are available to covered dependents throughout the year. Maternity care is available under Blue Cross and Blue Shield only after a family contract has been in effect for nine (9) consecutive months.

Additional information on the above services may be obtained from the business office at the University Health Service, Minneapolis Campus.

Counseling Aids

The services of a staff of professional counselors are available to help students learn more about and better understand their own abilities, interests, personalities, and emotions. These counselors assist students with their progress in college and with problems related to University life. Many students, at one time or another, may face questions such as: How can I learn to study more effectively? What vocation shall I plan to enter? How can I best manage my budget? How may I find satisfactory housing? What should I do about a speech or hearing difficulty? How can I improve my education through student activities? Assistance in answering these questions can be found in the individual agencies listed below or in the Office of the Dean of Students, 200 Eddy Hall on the Minneapolis Campus, or 215 Coffey Hall on the St. Paul Campus.

Duluth Campus students should consult the Counseling Office, 150 Kirby Student Center.

Students at the Morris Campus should consult the Counseling Office in Edson Hall.

Student Counseling Bureau

The Student Counseling Bureau, 101 Eddy Hall, offers specialized counseling and testing services to students who wish to learn more about themselves or who have personal problems which they would like to discuss with a trained counselor. You may wish to see a counselor about vocations you are considering, courses you may wish to take, methods of reading and studying effectively, or other personal problems. Nearly one-third of our University students have talked at some time to these counselors about marriage and family relations, dating, engagements, relations with parents, choice of vocation, and similar matters. Special services are provided for physically handicapped students and a special library of information about occupations is available to students. The Bureau's Reading and Study Skills Center offers help in spelling as well as in development of reading and study skills.

A problem may make itself felt in any one of several ways. Worrying about the lack of money, for example, may show itself through seriously affecting your grades. If you wish to review your progress in school or if you have problems that worry you, you are urged to talk with the Bureau's counselor.

Precollege counseling is available at a small fee to those who have not yet entered the University (no fees are charged University of Minnesota students). When you consider applying for admission to the University, you are encouraged to come to the Student Counseling Bureau for information about the different colleges in the University, courses available to you, and various University services for students.

Student Activities Bureau

The University believes that taking part in student activities is a significant part of college education. To give students an opportunity to participate in community life, several hundred student groups—professional, social and cultural, religious and recreational, athletic and oratorical, everything from departmental to the campus-wide student government group—have been organized. The Student Activities Bureau, located in 106 TSMa, exists to aid new groups toward sound organization, to supervise and guide groups in matters of program and finance, and to help individual students in selecting their extracurricular activities.

Foreign Student Adviser

Students from other countries are urged to call at 302 Eddy Hall, the office of the Foreign Student Adviser. Staff members in this office provide information which will be of assistance in aiding foreign students to meet the problems of federal, state, and local regulations; aid in questions of liaison with the student's own government; and offer information and counseling on problems of a personal and educational nature. Referral of individual students is also made to appropriate campus agencies for assistance with problems of inadequate language proficiency, financial planning, and academic performance.

Religious Activities Co-ordinator

Student programs of religious activity—an important part of campus life at the University—operate through a wide variety of denominational and interreligious groups. The Office of the Co-ordinator of Students' Religious Activities, 211 Eddy Hall, serves as a center where information may be secured concerning the 27 religious organizations on the Minneapolis and St. Paul campuses. Liaison is provided between the University and the diverse religious groups, their pastors, priests, rabbis, and advisers.

Speech and Hearing Clinic

Students with speech or hearing difficulties are urged to contact the Speech and Hearing Clinic in 205 Shevlin Hall. Here they will receive a free speech and hearing analysis and counsel concerning the possibility of reducing or eliminating any handicap they may have. If clinical help is needed, the student is assigned several appointments each week to work on his problem under the direction of one of the professional staff members of the Clinic. Students may receive help for such problems as stuttering, defective articulation, voice quality deviations, foreign accent, and handicapping speech anxieties. Students with a hearing problem may receive speech therapy and training in lip reading. A fee of \$5 per quarter is charged for these services. On the Duluth Campus, a speech and hearing clinic located in 130 Humanities Building offers assistance in the speech and hearing problems listed above.

College Advisory Programs

Most of the University's schools and colleges have advisory and counseling programs for their students. Each student is assigned to an adviser who helps him with course and other problems, and some of the schools and colleges maintain employment and job-counseling services as well. Students should discuss with their advisers their academic progress at least 2 or 3 times a year.

Scholastic Standing Committees

Each college has a faculty committee (some have student members, too) charged with interpreting the regulations of the faculty, or making exceptions to them if warranted. A student should consult the committee if he is in doubt about a college rule or thinks the rule should not apply to him. Committee headquarters are usually in the college office.

Women's Continuing Education Program

The Minnesota Plan for the Continuing Education of Women is a co-ordinating and facilitating service designed to help the undergraduate and graduate student prepare to maintain her intellectual competence during the family years, and to make the mature woman's return to academic, civic or vocational productivity a practical reality. Operating under a grant from the Carnegie Corporation of New York, the program includes counseling, continuous record keeping, special curricular offerings, and other services.

Information and application blanks are available at 106 TSMa.

Veteran, War Orphan, and Selective Service Information

Public Law 550 and 634, Veterans and War Orphans

If you were in the Armed Forces of the United States before February 1, 1955, you may be eligible for educational benefits under Public Law 550 (the so-called "Korean G.I. Bill").

If you are the son or daughter of a person who died of injury or disease incurred or aggravated in line of duty in the Armed Forces during World War I, II, or the Korean conflict, you may be eligible for educational benefits under Public Law 634, the War Orphans' Educational Assistance Act of 1956.

For either law, you can obtain application blanks and additional information at the Veterans Administration, Fort Snelling; 102 Administration Building, Minneapolis Campus; or 125 Kirby Student Center, Duluth Campus. The Veterans Administration will not pay you until you make application and you should complete this before you start classes. You pay your own fees and buy your own books under these laws. Full payments for undergraduates are made for 14 credits per quarter (or more) and proportionate payments are made for smaller loads.

If you have already applied for these benefits and obtained a Certificate for Education and Training for use at the University of Minnesota, you need only present the certificate at the Veterans Account Window (No. 18) on the first floor of the Administration Building (or at 220 Coffey Hall, St. Paul Campus or the Business Offices at the Duluth Campus or Morris Campus) and show your receipted fee statement which indicates that you have completed your registration.

Each time you begin attending classes again after a period of interruption, or in June or September, you must ask for a recertification at the appropriate Veterans Account Window.

Every Public Law 550 or 634 student must, by requirement of the Veterans Administration, fill out and present a monthly report of attendance. This is filed at the Veterans Account Window between the first and sixth day of each calendar month. Public Law 550 and 634 students at the Duluth and Morris campuses should report to the Business Office.

Public Law 894 Veterans

If you are a veteran registering under Public Law 894, you should make 102 Administration Building your first contact with the University. This office provides assistance to disabled veterans of the Korean conflict with matters pertaining to registration and the interpretation of Veterans Administration regulations affecting University programs. It provides counseling and authorizes textbook and supply orders for such veterans.

Veterans attending under this law at the Duluth Campus should report to the supervisor of Admissions and Records upon first registration. Veterans at the Morris Campus should report to the Office of Student Services.

Selective Service Certification

Because its men will be more useful citizens when they have completed their education, the nation's Selective Service policy encourages qualified students to stay in school as long as they can. If you place high enough in your class each succeeding year (or make a high enough score on the Selective Service College Qualification Test), you can request continued deferments for full-time study until you receive the Doctor's degree. Complete information about the qualifications, help in making out the necessary forms, and counsel in solving your personal Selective Service problem are available at 102 Administration Building. In advance of coming to the campus, you may obtain on request a folder of information on Selective Service as it will apply to you here.

Students on the Duluth Campus should consult the supervisor of Admissions and Records. Morris Campus students should consult the Office of Student Services.

Library Facilities and Services

Most of the publications which students need to consult in college, beyond the required texts used for individual courses, are available in the University's system of libraries. With nearly two million volumes, the University library ranks in size among the 10 largest university research libraries in the United States. In addition to the thousands of periodicals, newspapers, and reference books used for course-related

study and research, the library resources also include extensive collections of literary, historical, and biographical works for recreational reading.

General Libraries

Upperclassmen and graduate students particularly will find the Walter Library on the Minneapolis Campus well supplied with publications. There are outstanding collections in many areas such as European and American literature and history, political science, and sociology.

For students in their first 2 years of college there is a separate freshman-sophomore library in Johnston Hall. Here are provided, under open shelf conditions, most of the books needed in connection with courses at the Lower Division level. The patrons of this library are also encouraged to use the Walter Library, especially when they need more specialized sources of information, such as periodical literature, for the preparation of term papers and reports.

On the St. Paul Campus there is a modern central library housing publications in agriculture and home economics, with outlying specialized collections in forestry, biochemistry, veterinary medicine, entomology, and plant pathology.

The Duluth Campus also has a general collection of books and periodicals housed in the library building on the upper campus.

The library on the Morris Campus is located in Edson Hall.

Departmental Libraries

The library needs of students in several of the more specialized scientific and professional fields are met on the Minneapolis Campus through various departmental libraries housed outside of the Walter Library. Among these are such separate libraries as Engineering, Law, Chemistry, Art, Architecture, Mathematics-Physics, Journalism, Geology, Music, Mines and Metallurgy, Pharmacy, and Bio-Medical.

Cultural and Recreational Opportunities

Convocations

Most Thursday mornings, at 11:30 o'clock, the University holds its convocation program for students, faculty, staff, and the public, usually in Northrop Memorial Auditorium. Programs range from lectures on vital current topics to music and dance recitals and dramatic offerings. The purpose of the convocations, which are taped and rebroadcast by KUOM, is to bring ranking figures in current thought, news, science, adventure, entertainment, and the arts before the University and its community.

On the St. Paul, Duluth, and Morris campuses, a carefully selected program of convocations is presented at various times each quarter. Professional speakers and talent of high caliber appear.

Art Galleries

The University Gallery, located on the third and fourth floors of Northrop Memorial Auditorium, the center of the Minneapolis Campus, stresses a frequently changing program of art exhibitions. These exhibitions, announced through the press, radio, and Gallery publications, include paintings, sculpture, drawings, prints, and other arts of the past and the present. The Seminar Gallery, located in 315 Northrop Memorial Auditorium, is maintained for the showing of carefully selected examples of contemporary art, as well as for a workshop for small exhibitions of an interpretive nature.

The permanent collection of the University Gallery, largely composed of works by American artists of the 20th century, includes major collections of works by Hartley, Maurer and Nordfeldt, on extended loan from Ione and Hudson Walker and Mrs. B. J. O. Nordfeldt, in addition to paintings by Feininger, Marin and O'Keeffe. A sculpture collection of works by noted contemporary artists is being formed through the John Rood Sculpture Collection. The University Gallery is also actively engaged in adding to its collection of prints by artists of all periods. Selections of works from these permanent collections are regularly on view in the third floor galleries.

The University Gallery also provides three lending programs for the staff and students at the University of Minnesota: Office Loan Collection, Student Rental Collection, and Pictorial Reference Files. The Office Loan Collection includes framed original works of art which may be borrowed by staff members for their campus offices; pictures may be selected by appointment and

are loaned for a calendar year; this program is a courtesy to staff members and there is no charge. The Student Rental Collection includes framed original prints as well as reproductions of well-known paintings; pictures may be borrowed during the first week of each quarter (thereafter at certain hours) and are to be returned at the close of each quarter; this program is intended for the pleasure as well as education of the borrower and a nominal fee is charged. The Pictorial Reference Files provide mounted photographs and color reproductions for individual study and reference by both staff and students, as well as for study exhibitions posted in the third floor east exhibition area; materials may be borrowed or posted for the desired length of time; there is no fee.

For further information concerning the exhibitions, collections, or lending programs of the University Gallery, please inquire at the gallery offices in 316 Northrop Memorial Auditorium, or call extension 7521.

On the Duluth Campus, the Tweed Gallery offers a year-round exhibition program. The famous Tweed Memorial Collection containing paintings of the 16th through 19th centuries, dominated by the Barbizon School, is housed in the gallery.

Music

Participation in campus musical life is open to students in all colleges on the Minneapolis and St. Paul campuses—not only to music majors—both in Department of Music courses and in the volunteer musical organizations it directs. All musical groups present concerts each quarter, open free to the general public. Credit is offered for those desiring it.

University Bands consist of: (1) Concert Band Ensemble has the best possible instrumentation of a wind ensemble whose membership is selected by personal audition from the total band membership; (2) Football Marching Band plays at all the fall quarter football games and at one out-of-state football game; (3) Varsity (Activities) Band is of full concert band proportion designed for the student who is avocationally interested in music or who is preparing for membership in the Concert Band Ensemble. University Bands headquarters is 14 Northrop Auditorium (basement).

University Symphony Orchestra rehearses weekly on the stage of Northrop Auditorium where it performs its three annual concerts of standard orchestral literature. Its office is 107 Scott Hall.

University Chorus, composed of 250 mixed voices, prepares major symphonic-choral works for annual performances with the Minneapolis Symphony Orchestra, University Symphony Orchestra, and University Concert Band. Auditions are arranged in 204 Scott Hall.

University Chamber Singers is made up of 24 to 30 select, mixed voices which are known for their treatment of difficult, lesser-known compositions and contemporary music. Auditions take place in 204 Scott Hall.

Men's Glee Club, newly formed in the fall of 1955, prepares standard glee club material as well as special arrangements for on- and off-campus appearances. The director is to be found in 4 Music Education Building.

Women's Glee Club has been recently organized. This group prepares standard women's glee club material for on- and off-campus appearances. It is hoped that this group will combine with the men's glee club for occasional joint appearances. Auditions are held in 206 Scott Hall.

Opera Workshop is open to singers interested in performing operas, or scenes from operas. Auditions take place in 104 Music Education Building.

St. Paul Campus Chorus is primarily for students on the St. Paul Campus and for special events there.

Music Hour—Informal music hours, open to students, staff, and general public, take place at 11:30 a.m. each Tuesday in Scott Hall auditorium. Faculty and students, as well as guest artists and lecturers, appear at Music Hour.

Music students are given priority to act as ushers at all concerts presented in Northrop Auditorium by the Minneapolis Symphony Orchestra, Artists Course series, and the spring appearances by the Metropolitan Opera Company, as well as various other events.

The professional music fraternities on campus—Sigma Alpha Iota and Phi Mu Alpha, Sinfonia—present a series of operas each year, directed and performed entirely by students.

The Music Department offers courses in music appreciation, music history and literature, music theory and composition, music education, and applied music (piano, organ, voice, violin, trumpet, percussion, etc.). Private lessons are available in applied music to students regularly registered at the University and to students not able to attend day classes full time.

Major concerts and musical attractions are regularly brought to Northrop Auditorium by the Department of Concerts and Lectures. The University Artists Course presents a number of top flight recital artists, ballet, and world famous musical organizations on the campus each year. Season tickets for the Artists Course, at remarkably low prices, are sold at the office in 105 Northrop Auditorium.

The Minneapolis Symphony Orchestra, with Stanislaw Skrowaczewski as conductor, makes its home in Northrop Auditorium on the Minneapolis Campus, and offers its annual series of evening and Sunday afternoon concerts there. Special season ticket rates are open to students and faculty. The Symphony office is in 110 Northrop Auditorium.

A spring season of the Metropolitan Opera is also brought to the campus under the combined sponsorship of the Department of Concerts and Lectures and the Minneapolis Orchestral Association. This season of opera usually comes the middle of May and presents four operas by the Metropolitan Opera Company.

At Duluth, students also have the opportunity to enjoy one of America's outstanding community symphony orchestras—the Duluth Symphony. The University orchestra offers excellent opportunities for musical performance and enjoyment. A number of community artists' courses round out an exceptional cultural climate. Campus choral and instrumental groups have active programs.

Students at Morris will have an opportunity to participate in choral and instrumental groups dependent upon their interests.

Theater

Each year the University Theater presents a diversified program of living drama. The high standing of the University Theater is indicated by the fact that it was selected by the Defense Department for tours of Europe (1957), the Orient (1958), and the Northeast Command including Greenland and Iceland (1961), and also by the State Department for a tour of Brazil (1957). The major drama season at Scott Hall consists of five full-length plays offering the finest in dramatic literature to the student body at a nominal fee. In addition, the University Theater sponsors an Arena series in Shevlin Hall, a Young People's series, a Foreign Language series, a Studio series of experimental and student-directed plays, and innumerable one-act plays throughout the year. Perhaps the most popular project to date has been the Centennial Showboat, which plays a 10- to 12-week season each summer on the Mississippi. With the construction of the Tyrone Guthrie Theater in Minneapolis, theater activities on campus can be expected to assume even greater importance. With such an extensive program, students interested in the theater find ample opportunity to participate both as technicians and actors.

The University Theater at Duluth presents an outstanding play each quarter and additional stage performances in a studio theater.

Morris Campus students likewise have the opportunity to participate in dramatics.

Museum of Natural History

"Habitat exhibits," nearly a hundred displays of Minnesota plants and animals mounted in typical environment, are open to the public without charge in the Museum of Natural History on the Minneapolis Campus. Weekly illustrated programs on Sundays at 3 p.m. feature a wide variety of natural science topics. In addition many thousands of specimens of reptiles, amphibians, birds, and mammals are available here for study by students and qualified visitors.

Physical Education, Athletics, and Sports

Elaborate opportunities for sports and exercise are open to both men and women students. Though the intercollegiate athletics program for men is best known, nonvarsity sports attract several times as many participants each year.

For women, instruction in a wide variety of seasonal sports, dance, body conditioning, as well as recreational activities, centers in the Norris Gymnasium for Women. All instruction is under expert leadership. The Women's Athletic Association is comprised of organized activity programs and honorary clubs in aquatics, modern dance, tennis, badminton, riding, tumbling, and golf; these activities are under joint faculty and student leadership and are open to all women in the University. The facilities of Norris Gymnasium for Women which are open to all women students in the University include 2 large gymnasiums, 2 swimming pools, a field house, a study-lounge, and a siesta room.

For men students a broad plan of organized intramural sports and other leisure time activities is supplemented by extensive facilities for recreation. Cooke Hall, the Memorial Stadium, the Field House, and the Williams Arena provide abundant opportunity for gymnastics, handball and squash, boxing and wrestling, swimming, skating, and other recreational activities. Outdoor playing fields and tennis courts, the indoor ice skating rink, and the two golf courses near the St. Paul Campus are open to both men and women.

Instruction in physical education for men and women, in a wide variety of activities, as well as an active program of intramural sports and general recreational activities, is conducted in the St. Paul Campus gymnasium.

In addition to an extensive program in health and physical education for men and women, ranging from an outstanding intramural schedule to many special interest clubs, the Duluth Campus enjoys intercollegiate athletic competition in the Minnesota Intercollegiate Athletic Conference. The University at Duluth fields teams in football, basketball, swimming, hockey, track, golf, skiing, tennis, and wrestling.

Activities at the Morris Campus include intramural competition in football, basketball, softball, and other athletic events. In addition there is individual competition in swimming, track, and golf.

General Social Programs

Students organize much of their social and extracurricular activity around the facilities of several Unions.

At the Coffman Memorial Union on the Minneapolis Campus, full-time program consultants aid Union student committees in planning and conducting a wide variety of recreational and social enterprises. For student groups, the Union has meeting and office rooms, general lounges, 2 ball-rooms, a card room, restaurant and soda fountain facilities, an aircraft workshop, billiard and pool tables, and a 16-lane bowling alley.

The Union on the St. Paul Campus and the Kirby Student Center on the Duluth Campus have similar facilities. The Village Union at University Village, for married students and their families, provides not only similar facilities but also play center facilities for small children. Facilities are also provided on the Morris Campus for social and extracurricular activities.

Financial Aids

Student Loans

Should you need financial aid or advice, the Bureau of Student Loans and Scholarships, 201 Eddy Hall, may be able to help you. Loan funds have been set up to help any student who is making normal progress toward an educational objective. Usually you must have finished 2 quarters at the University before a loan will be granted you, but emergency needs get special consideration. Students who are interested in loans provided for under Title II of the National Defense Education Act of 1958 should apply through this office.

Students at Duluth should go to the Office of Student Personnel Services, 125 Kirby Student Center. Those at Morris should report to the Office of Student Services, Edson Hall.

Scholarships and Merit Awards

Scholarships for entering freshmen, chosen from among graduates of Minnesota high schools, are offered through the Bureau of Student Loans and Scholarships. This fund is supported by gifts from alumni and friends of the University through the Greater University Fund. The scholarships, which range from \$200 to \$500, are awarded to applicants on the basis of scholarship, character, leadership, vocational and academic promise, and relative need. Applications should be made through Minnesota high school principals in January.

Direct blood descendants of World War I veterans who were in the service 6 months before the armistice, and who have completed 2 quarters of satisfactory work at the University, may be eligible for the LaVerne Noyes resident tuition scholarship. Application and discharge papers must be filed each quarter before September 1, December 1, and March 1. Grants are limited to a maximum of 6 quarters.

After the student has established a record of achievement at the University, other scholarships and merit awards are offered in many of the University's fields of study, usually as cash grants in recognition of outstanding achievement. Information about these awards is announced through the Official Daily Bulletin.

Generally speaking, and with regret, the University is not able to offer scholarships to non-residents or transfer students until they have made a deserving record at this University.

The College of Agriculture, Forestry, and Home Economics on the St. Paul Campus has a number of scholarships and awards available to its students. Information may be obtained from the College Office, 202 Coffey Hall, St. Paul Campus.

The Duluth Campus has a number of scholarships and awards available to its students. Information may be obtained from the Office of Student Personnel Services, 125 Kirby Student Center, University of Minnesota, Duluth.

Information concerning scholarships available on the Morris Campus can be obtained from the Office of Student Services, 102 Edson Hall, University of Minnesota, Morris.

Graduate Assistantships and Fellowships

Graduate students have open to them a number of teaching assistantships and fellowships—usually requiring part-time work—in many University departments. You can get information about these from the Graduate School or the college concerned.

Counselorships

For selected graduate students there are a number of counselorships, in dormitories and fraternities, which provide room and board and require part of their holders' time. The office of the Dean of Students can furnish information about these positions, as can the co-ordinator of housing on the Duluth Campus.

Aids for Handicapped Students

Under certain conditions blind students are eligible for tuition scholarships. Application for aid should be made at the Office of Admissions and Records (window 18).

"Rehabilitation funds" for the education of disabled persons are available through the State Department of Education. Applications for aid from these funds should be sent to the Division of Vocational Rehabilitation, State Office Building, St. Paul 1.

Student Employment Bureau

If you need a job to help meet school expenses, the Student Employment Bureau, 153 TSF, will help you find part-time work either on or off campus. Apply in person at the Bureau after you have enrolled and know your class schedule. On the Duluth Campus, go to the Placement Office, 140 Kirby Student Center; or at Morris, go to the Business Office. Your chances of being placed depend on the supply of jobs, your qualifications, your need, and the hours you have available. Very frequently a job will provide valuable experience as well as financial assistance. Work for board and room is usually available for girls, and sometimes for men or married couples.

Housing Facilities

Most out-of-town students live either in University-maintained residence halls, in private housing, or in fraternities or sororities.

Information concerning residence halls may be obtained by writing to the office of the Director of Housing, 108A Westbrook Hall, Minneapolis 14. This information as well as information about private housing and fraternities or sororities may also be obtained from the Student Housing Bureau, 209 Eddy Hall, Minneapolis Campus, or 215 Coffey Hall, St. Paul Campus.

University Residence Halls

Living in a residence hall has many advantages for the student. The halls, located close to class buildings and to the student unions, offer comfortable living with well planned healthful meals, served under the direction of a trained dietitian. Opportunities for counseling, health supervision, student government, social and athletic programs are provided. All residence halls are modern, fireproof brick buildings, constructed in accordance with the highest safety standards. The 1960-61 rates range from \$3.04 to \$3.74 per day for board and room (\$229-\$281 per quarter), payable in monthly installments. Many residents can earn part of their board and room by work in the residence halls. An early interview and application is recommended for students interested in this opportunity.

Application should be made early for accommodations in University residence halls. *Final acceptance by the University is not necessary before applying.* Cancellation may be made without penalty if the residence hall is notified by September 1 or immediately following nonacceptance by the University.

MINNEAPOLIS CAMPUS

Halls for Women

SANFORD HALL, accommodating 280 freshman, upperclass, and graduate women, is located on University Avenue S.E. near the main entrance to the campus. Priority is given to freshman women up to July 15.

COMSTOCK HALL accommodates 540 sophomore, junior, senior, and graduate women in large double and single rooms (no double-deck beds). There are many opportunities for girls to work for part of their board and room. A limited number of freshman women will be admitted. This hall is situated along the Mississippi River close to the center of University life.

PIONEER COURT, accommodating 180 undergraduate and graduate women is located adjacent to Pioneer Hall for men and faces on East River Road. Women residents will share the common facilities of dining and recreation with men residing in Pioneer Hall.

POWELL HALL is located at 500 Essex Street S.E. near the University Hospitals. It accommodates 407 nursing students, interns, and doctors on call. Some graduate nurse students earn board and room by working in the University Hospitals.

Halls for Men

PIONEER, CENTENNIAL, TERRITORIAL, and FRONTIER HALLS are located in a quadrangle on the edge of the campus near the East River Road. These halls accommodate 2,360 men. Special houses for graduate students are available. Many residents can earn part of their board and room by work in the halls.

ST. PAUL CAMPUS

BAILEY HALL is a new attractive residence hall with a wing for 156 men and another wing for 152 women in double rooms. Meals for residents of this hall are served in the new Dining Center adjoining the dormitory and the Student Center.

Other accommodations may be available in BREWSTER, MEREDITH, DEXTER, and NORTH HALLS.

DULUTH CAMPUS

Accommodations are available for 118 women in Residence Hall Units B on the Upper Campus. Residence Hall Units A will accommodate 56 men students. Additional accommodations are available in Torrance Hall on the lower campus. Meals for residents are served in the Kirby Student Center Cafeteria. Information and applications for reservations may be obtained by writing to Head Residence Counselor, 101 Kirby Student Center, University of Minnesota, Duluth.

MORRIS CAMPUS

Separate dormitories are available for both men and women. Further information may be obtained from the Office of Student Services, 102 Edson Hall, University of Minnesota, Morris.

University Housing for Married Students

COMMONWEALTH TERRACE, new permanent apartments for married students and located on the St. Paul Campus, provides housing for 220 families in 1- and 2-bedroom units. Present rates are \$70 and \$80 per month including utilities, unfurnished except for stove and refrigerator. Priority is given to Minnesota residents with children.

UNIVERSITY VILLAGE, midway between the Minneapolis and St. Paul campuses, and UNIVERSITY GROVE EAST, adjacent to the St. Paul Campus, have a limited number of temporary housing units for student families. Minnesota resident veteran families with children receive priority. Present rates are \$45 per month including utilities, unfurnished except for stove.

THATCHER HALL, for married graduate students only, is located at the edge of the St. Paul Campus. The building contains efficiency and 1-bedroom apartments at \$62.50 and \$70 per month furnished.

The demand for family housing is great and an early application is advisable. Applications for any of the four locations should be sent to Director of Housing, 108A Westbrook Hall, University of Minnesota, Minneapolis 14.

Private Housing

Vacancies in apartments, housekeeping units, and sleeping rooms are reported to the Student Housing Bureau, where students may get help with housing. Non-University housing is inspected to secure adequate housing standards for health, safety, and study conditions. Married students

have found it desirable for one member of the family to come and live in temporary accommodations while looking for quarters for the entire family.

Rooms or apartments in private residences must be engaged "on the spot"—no reservations can be made before arrival on campus. Students should make arrangements for housing at an early date before classes begin to be assured of adequate quarters. Single students, under 21 years of age, must have approval of the Student Housing Bureau to live in an apartment.

All students, married or single, who select quarters not already approved by the University, must get the approval of the Student Housing Bureau director before occupying them. The Bureau recommends that in either case you sign a rental agreement on a University form, and for 1 quarter at a time.

Whatever lease arrangement you make, housing regulations provide that you must give notice according to pay period if you plan to move. Any change of address must be reported to the Bureau. The Bureau is the agency to consult in case of problems or difficulties about housing, or about your privileges, rights, and obligations. Use of Bureau counsel in a dispute is likely to lead to a satisfactory conclusion.

Women students living in private rooms and rooming houses are expected to follow hour regulations established for the University's women's residences. They may entertain callers in suitable rooms until 12 midnight any night of the week. Earlier hours may be established with mutual agreement of householder and students.

Moving to Fraternities and Sororities

Joining a fraternity or sorority does not excuse you from a rooming contract until it has ended. If you plan to move to a fraternity or sorority house, you should make the move at the expiration of your contract or room commitment, or at such time as you are able to furnish a substitute to take over your contract. Information on rush week and fraternity and sorority pledging may be obtained from the Student Activities Bureau, 114 TSMa, University of Minnesota, Minneapolis 14.

Food Services and Restaurants

Minneapolis Campus

A variety of food service facilities is available to students in Coffman Memorial Union. Largest is the cafeteria, on the ground floor. There are also a soda fountain, a lunch counter, and commuters' lunchrooms for students who bring lunches from home. Banquet, party, and private dining room facilities are also available.

Shevlin Hall has a cafeteria and lunchroom for students. There are also several privately operated restaurants, lunch counters, tearooms, and soda fountains near the campus.

St. Paul Campus

The St. Paul Campus Dining Center provides full food service for students. Lunchroom and soda fountain facilities are available in the new Student Center.

Duluth Campus

The Kirby Student Center cafeteria provides complete food services, including banquets, regular meals, snacks, and picnic menus. Torrance Hall, on the lower campus, has a lunchroom for students.

Morris Campus

Students living in dormitories will eat at the dining hall cafeteria. The Student Lounge also has a lunch counter and a commuters' lunchroom for students bringing lunches from home.

How Much Will It Cost?

A prospective college student always must ask, "How much will it cost? Whether he is "on his own," earning some or all of his own funds, or getting aid from parents or others, he asks the inevitable question of University advisers.

A general answer is, for residents of Minnesota, about \$1,200 for 3 quarters except for dentistry, medicine, and veterinary medicine where expenses are about \$1,800. Nonresidents should add up to \$400 for the higher tuition required of students from out of state.

This general answer has to be qualified at once, for there are many factors that can't be tied down to specific figures. In the table of estimated expenses the largest

ESTIMATED AVERAGE EXPENSES OF MINNESOTA RESIDENTS Fall, Winter, and Spring Quarters, 1961-62

College	Fees ¹	Books and Supplies ²	Room and Board ³	Total
Dentistry, Medicine	\$465	\$600	\$750	\$1815
Veterinary Medicine	395	600	750	1745
Mortuary Science	365	100	750	1215
Law, Medical Technology, Physical and Occupational Therapy	320	100	750	1170
Other schools and colleges	285	100	750	1135

¹ Includes tuition, incidental, and other fees. Actual charges normally will not vary more than \$10 from this amount.

² Cost may vary. Includes \$500 for dental instruments and \$450 for microscope for medicine and veterinary medicine.

³ University Residence Hall rates for 1960-61 were from \$687 to \$843 for room and board. The average accommodation was \$750.

item is that for board and room. In some cases these board and room estimates will be too high—many students, living at home or with relatives, make no cash outlay for board and room; others “work out” board and room costs. Depending on tastes and special situations, the cost may be higher.

Moreover, an estimate such as this does not take into account laundry and clothing expenses, nor any cost for such items as recreation, travel, and other incidentals.

So you should consider the estimates in the table not as exact figures, but as general guides.

Fees

Tuition

The table shows the basic tuition fee in each University division. It also shows, except in the Graduate School, that a student taking only a few credits a quarter may pay tuition on a credit-hour basis. You pay your fees at the time you register, before you begin your quarter's work. Fees for auditors are the same as for students registered for credit.

Graduate students of certain classifications who are giving 25 per cent or more of full-time service to the University are privileged to pay tuition at the Graduate School resident rate, regardless of source of fund, resident status, or curriculum pursued. Those included are fellows, scholars, assistants, instructors, research associates, and members of the teaching staff and scientific bureaus and experiment stations; they must be regularly enrolled in the Graduate School or be in the final year of the Master's degree curriculums in undergraduate colleges. Civil service appointees working 75 per cent time or more are eligible for the same privilege. Faculty members at the postdoctoral level may audit courses without registration or payment of fees. Should the need arise, an official class audit card may be obtained from the Graduate School.

Students of one college taking work in another pay the tuition fee of their own college. If you wish to apply credit for such work toward a degree from a higher fee college you must pay the tuition difference. This rule does not apply to students who have paid fees for the full normal period of residence in the higher fee college.

TUITION FEE

School or College	Quarter Fee		Credit Hour Fee	
	Resident	Non-resident	Resident	Non-resident
Agriculture, Forestry, Home Economics; Business Administration; Dental Hygiene; Duluth; Education; General College; Morris; Institute of Technology; Public Health (except Hospital Administration); Science, Literature, Arts	\$ 71.00	\$180.00	\$ 6.00	\$15.00
Dentistry and Graduate Work	130.00	255.00	11.00	21.25
Graduate School, more than 6 credits	71.00	180.00	No credit hour fee provided	
6 credits or less, or thesis only	35.50	90.00		
Law School and Graduate Work; Medical Technology; Physical and Occupational Therapy	85.00	180.00	7.25	15.00
Medical School and Graduate Work; Hospital Administration	135.00	265.00	11.25	22.25
Mortuary Science	100.00	180.00	8.50	15.00
Nursing, Basic and Practical	71.00	105.00	6.00	8.75
Nursing Administration	71.00	180.00	6.00	15.00
Other programs	85.00	180.00	7.25	15.00
Pharmacy and Graduate Work	76.00	185.00	6.50	15.50
University College	Tuition of college in which work is taken			
Veterinary Medicine and Graduate Work	110.00	245.00	9.25	20.50

Incidental Fee

If you are registered for 6 or more credits in a quarter you pay the \$20 fee which entitles you to the privilege of the student unions, the University Health Service, the *Minnesota Daily*, and helps to support the student government. Students in the Institute of Technology pay 85 cents more a quarter and receive in addition the *Minnesota Technologist*. The incidental fee at Duluth and Morris is \$20 and includes similar services.

The incidental fee is required of all students in the Graduate School, except teachers in service taking less than 6 credits, Ph.D. candidates during their final quarter of registration, and students doing research away from the campus.

Any student for whom the incidental fee is not required may obtain the privileges by paying the fee on an optional basis.

Foreign Student Health Fee

All noncitizens are required to pay a Foreign Student Health Fee of \$5 each quarter. See section on University Health Service for explanation.

Special Fees

Additional fees are charged for special services as follows:

<i>Advanced Standing Examination Fee</i>	\$5.00	<i>Course Fees</i>	
Such an examination may be taken only upon approval of the appropriate committee. (If it is taken during the first quarter after entering or re-entering the University, no fee.)		Civil Engineering Summer Camp; Modern Language Institute; Music Lessons; Physical Education; Preparatory Composition, English, Mathematics; Public Health; Rhetoric. See <i>Class Schedule</i> issued at registration.	
<i>Credentials Fee</i>	\$5.00	<i>Music Practice Fees</i>	
Required of nonresidents applying for admission to Law, Medicine, Dentistry, Education (Upper Division), Business Administration, and Veterinary Medicine.		For rent of pianos, organs, and music practice rooms. Rates are given in the <i>Class Schedule</i> issued at registration.	
<i>Dentistry Examination Fee</i>	\$26.00	<i>Placement Service Fee</i> —required of degree candidates from:	
For examinations to determine advanced standing in Dentistry.		Duluth	\$5.00
<i>Deposits</i>		Institute of Technology (first certificate or degree)	5.00
Agricultural Biochemistry	\$5.00	College of Education (except Nursing Education Majors)	7.50
Art	5.00	<i>Privilege Fee</i> —for late registration or late payment of fees	
Chemistry	10.00	Through first week of classes	\$3.00
Pharmacy	5.00	Through second week of classes	5.00
Physiological Chemistry	5.00	Third week of classes and thereafter	10.00
To cover cost of materials and breakage.		Late change of registration	2.00
<i>Duplicate Diploma Fee</i>		<i>Record Service Fee</i>	\$1.00
To replace large diploma	\$7.50	This fee, required of all new students, provides three certified copies of student records.	
To replace small diploma	5.00	Each additional copy	1.00
<i>Graduation Fee</i> (including small diploma)		<i>Special Examination Fee</i>	\$5.00
Each degree	\$10.00	<i>Speech and Hearing Clinic Fees</i>	
<i>Hospital Insurance Fee</i> (Duluth)		See <i>Class Schedule</i> issued at registration.	
Per quarter	\$6.00	<i>Thesis Binding Fee</i>	
Required of all students taking 6 or more credits.		Master's thesis	\$2.50
<i>Large Diploma Fee</i>	\$5.00	<i>Thesis Examination Fee</i>	
Any graduate may get a large diploma in place of a small one, by paying this fee in addition to the graduation fee.		For professional engineer degree	\$15.00
<i>Microscope Rental Fee</i>		<i>Thesis Publication Fee</i>	
Partial use, one quarter	\$3.00	Ph.D. thesis	\$25.00
Continuous use, one quarter	6.00		

Refunds

If you cancel your registration before 6 weeks of any quarter have passed, you are entitled to refund of tuition, incidental, and course fees on this basis: If you do not attend classes at all, you get full refund; if you cancel within the first week, you get 90 per cent; within the second, 80; third, 70; fourth, 60; fifth, 50; sixth, 40. After the sixth week there is no refund.

Nonresident Students

Nonresident tuition fees will be charged students who have not had permanent homes in Minnesota for at least a calendar year. The completion of a year's stay in Minnesota does not in and of itself establish residence for University purposes and a person who moves to Minnesota coincident with attending school may not be able to demonstrate that he is acquiring residence.

The student from out of state who proposes to establish residence must assume the burden of proving conclusively that he has been a resident here the requisite time with the intention of making his permanent home in the state.

Although a student's classification may be changed whenever all necessary residence requirements are met, it is his responsibility to initiate action. If there is any question about your classification, resident or nonresident, you should apply to the Office of Admissions and Records for consideration of your status.

Athletic Purposes

The following statement on athletic purposes is published in compliance with the athletic regulations of the North Central Association of Colleges and Secondary Schools:

The University of Minnesota's concept of the purpose of sports and athletics developed early in the institution's history. From the beginning of recreational sports and athletics on the University campus the men and women responsible for these activities have sought to relate them to the ideals, principles, and purposes of the institution's broad educational policies. Thus, from the early days of class, intramural, and intercollegiate games there has existed an increasing awareness of the special contributions of sports and athletics to the educational programs and experiences of those students who participate voluntarily for the pleasures and values to be obtained from these activities and those preparing for professional courses as athletic coaches, recreational workers, and the like.

In this past is to be found the philosophy from which arise the many specific purposes of present-day programs, including the following:

1. To provide opportunities for students to engage voluntarily in physical activities and programs of physical fitness which will contribute to their personal health and the national welfare.

2. To encourage students to develop interest in a variety of physical activities and sports which are so pleasant and satisfying to them during residence at the University that many will continue their interest and activity after leaving the campus.

3. To provide adequate facilities for both men and women students to participate in physical fitness programs including recreational games, sports, contests, and athletics outside the regularly organized courses in physical education.

4. To provide qualified and competent staff to teach the values inherent in recreational sports and athletics within the environment of the University. Desirable outcomes included are a sound understanding of the athletic exercise or contest, the required skills, the rules of sportsmanship, and the spirit of clean competition and the will to win; and, also, to develop sportsmanlike, appreciative, and intelligent spectators.

5. To emphasize such corollary values of supervised sports and athletics as the experience of team play and working co-operatively with others; respect for rules; character development; group loyalty; leadership in group activity; and associations, friendships, and social relationships through sports.

6. To give recognition to the contribution of sports and athletic activities in developing the personality of the individual student, particularly with respect to the attainment of a balanced adjustment in social, intellectual, and emotional activities.

7. To advance esprit de corps in terms of loyalty, spirit, and institutional morale, and to acknowledge the important roles of sports and intercollegiate athletics as unifying factors among students, alumni, and friends of the University.

8. To provide a laboratory for professional courses in physical education which will assist in preparing prospective leaders, coaches, supervisors, and directors of recreation, athletics, and physical education in colleges, high schools, and recreation centers.

9. To encourage the attainment of sound standards in the conduct of sports and athletic activities among universities, colleges, and high schools.

The University accomplishes these objectives in part by a sports and athletic program which includes the following elements:

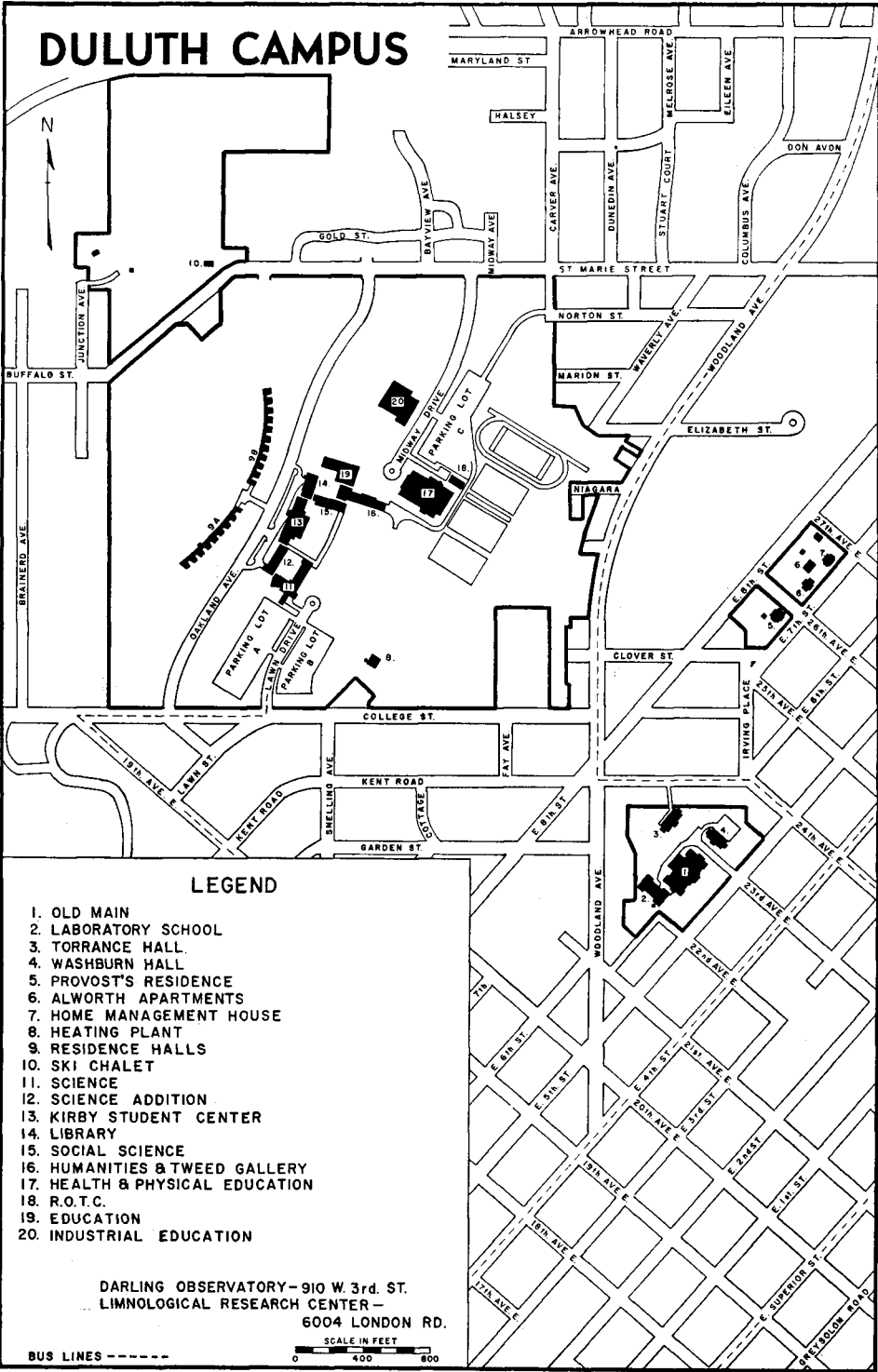
1. *Sports for Individuals and Small Groups*—Students, as individuals or as members of small groups, are invited and encouraged to engage in sports and games of their choice. A wide variety is offered: golf, swimming, handball, squash, tennis, archery, fencing, bowling, ice skating. Excellent facilities are close to both campuses.

2. *Intramural Sports*—Students are also invited and encouraged to participate in group or team sports. The intramural athletic program includes baseball, touchball, softball, basketball, golf, tennis, horseshoes, handball, ice hockey, squash, swimming, bowling, boxing, volleyball, archery, badminton, table tennis, wrestling, rifle shooting, fencing, and track and field events.

3. *Intercollegiate Athletics*—Men students who meet the rules of eligibility for competition in intercollegiate athletics, as set forth in the most recently revised *Handbook* of the conference commonly known as the Big Ten or Western Conference, are invited and encouraged to report to the coach for a tryout in each intercollegiate sport in which they are interested.

The University of Minnesota was one of the founding members of the conference now known as the Big Ten or Western Conference. Only institutions having full and complete faculty control of intercollegiate athletics may hold memberships. This control relates to standards of eligibility, team schedules, ticket distribution, conference legislation, etc. In keeping with the basic principles of faculty control, the responsibility for intercollegiate athletic policies at Minnesota rests with the Senate Committee on Intercollegiate Athletics. This committee is made up of faculty, alumni, and students, with the faculty constituting a majority. Athletic department budgetmaking and control, and staff appointments, are handled directly upon recommendation to the president by the director of physical education and athletics in precise accord with the procedure of budget and appointment recommendations made by the deans of the various colleges to the president.

DULUTH CAMPUS



LEGEND

- 1. OLD MAIN
- 2. LABORATORY SCHOOL
- 3. TORRANCE HALL
- 4. WASHBURN HALL
- 5. PROVOST'S RESIDENCE
- 6. ALWORTH APARTMENTS
- 7. HOME MANAGEMENT HOUSE
- 8. HEATING PLANT
- 9. RESIDENCE HALLS
- 10. SKI CHALET
- 11. SCIENCE
- 12. SCIENCE ADDITION
- 13. KIRBY STUDENT CENTER
- 14. LIBRARY
- 15. SOCIAL SCIENCE
- 16. HUMANITIES & TWEED GALLERY
- 17. HEALTH & PHYSICAL EDUCATION
- 18. R.O.T.C.
- 19. EDUCATION
- 20. INDUSTRIAL EDUCATION

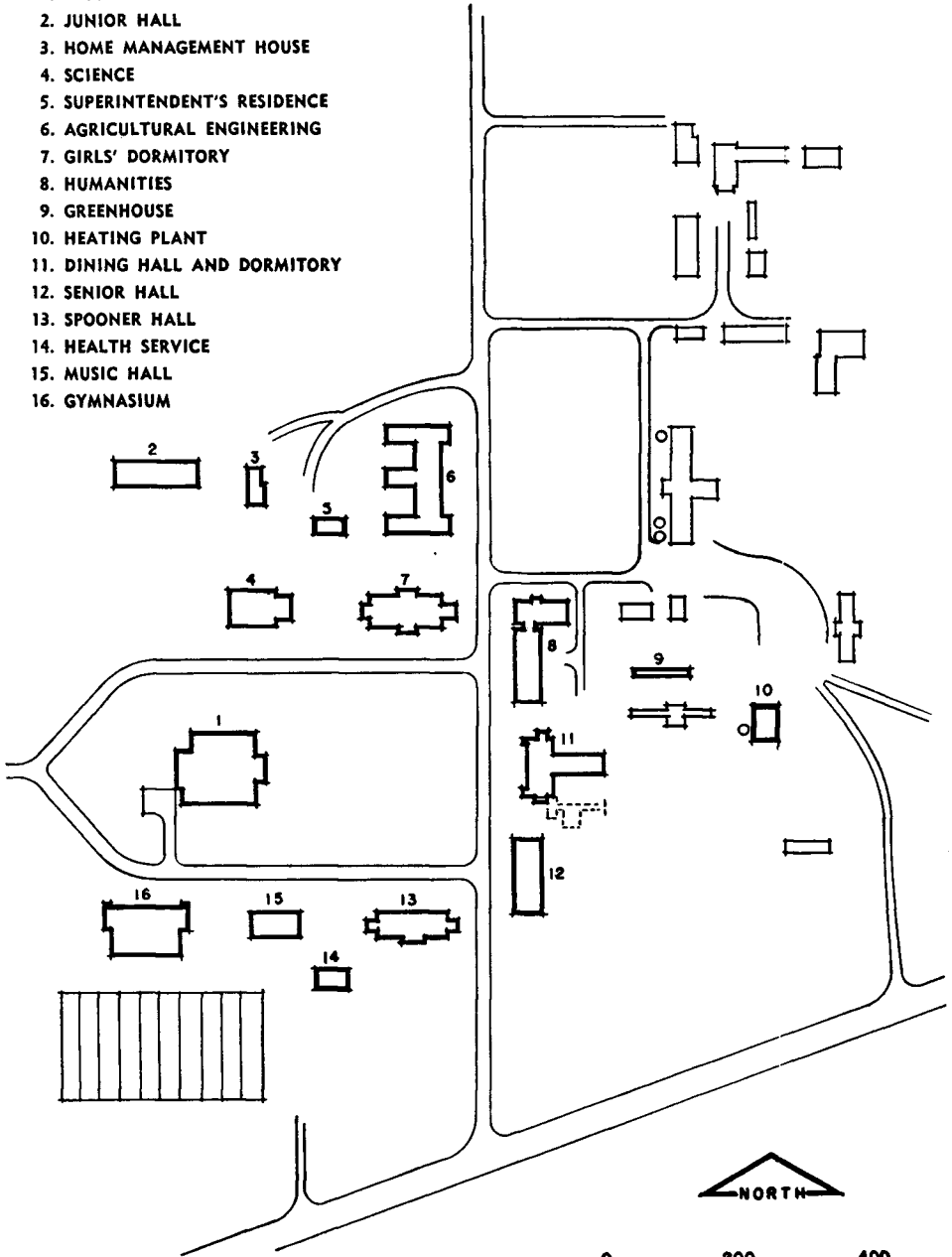
DARLING OBSERVATORY - 910 W. 3rd. ST.
 LIMNOLOGICAL RESEARCH CENTER -
 6004 LONDON RD.

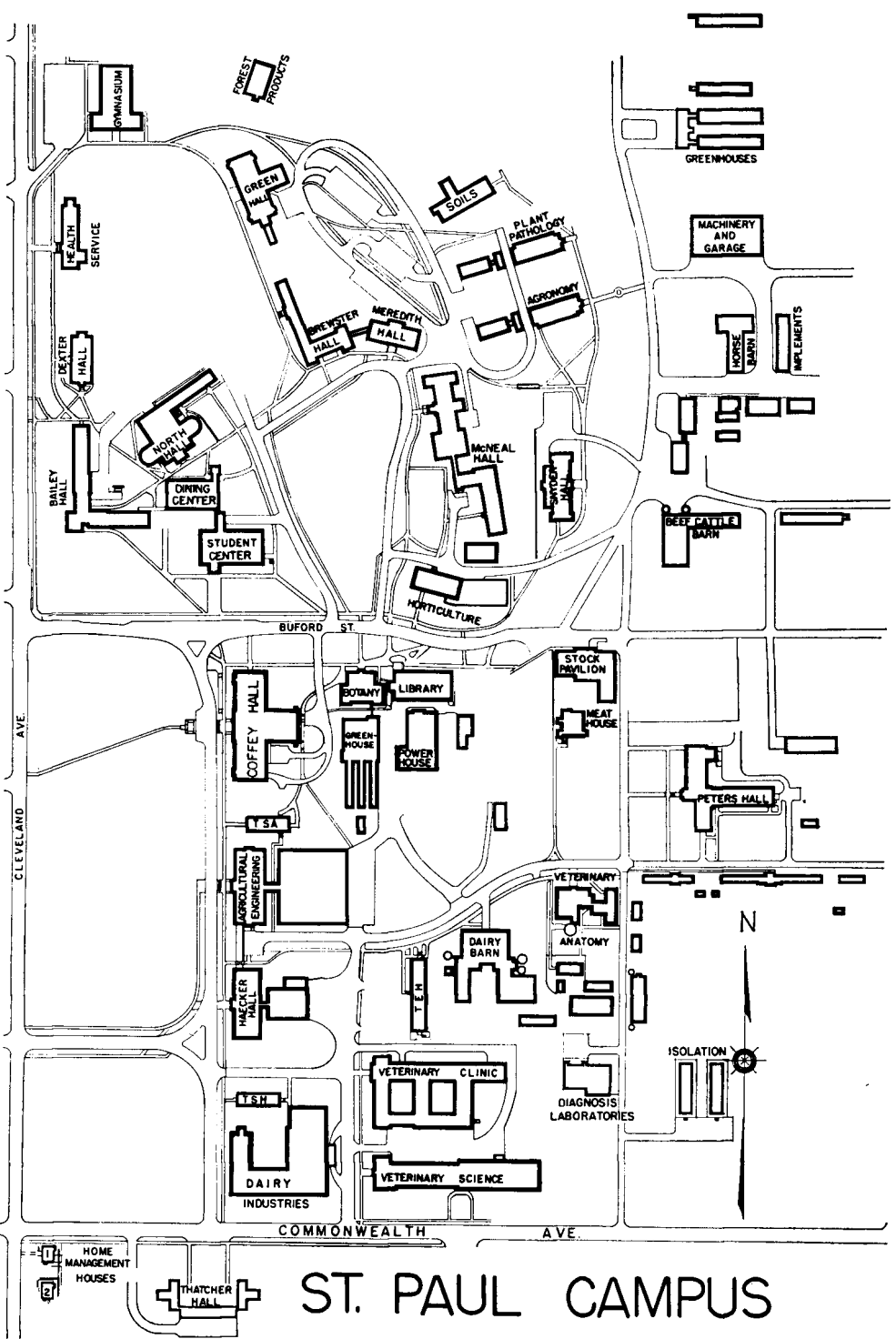


BUS LINES - - - - -

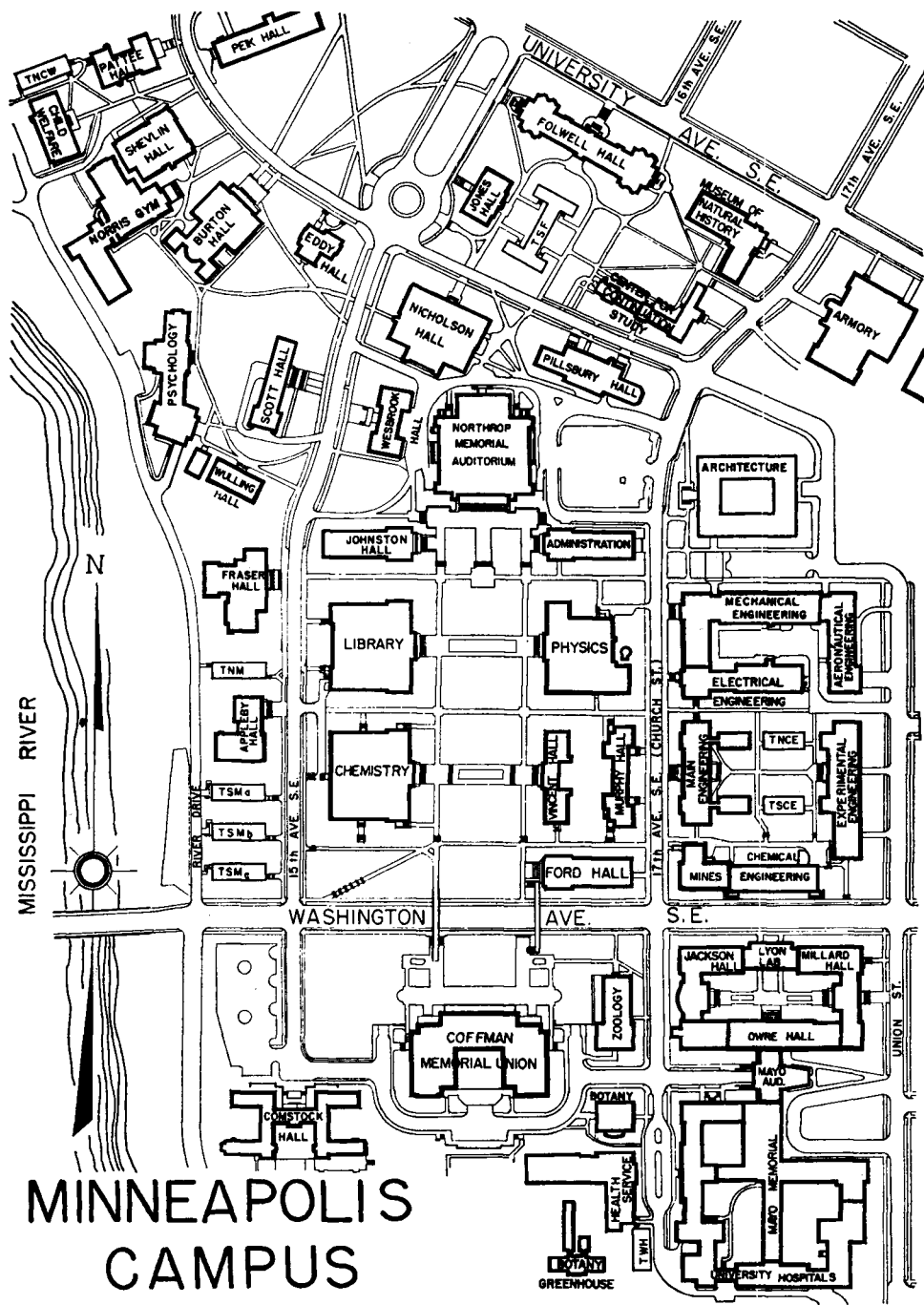
MORRIS CAMPUS

1. EDSON HALL
2. JUNIOR HALL
3. HOME MANAGEMENT HOUSE
4. SCIENCE
5. SUPERINTENDENT'S RESIDENCE
6. AGRICULTURAL ENGINEERING
7. GIRLS' DORMITORY
8. HUMANITIES
9. GREENHOUSE
10. HEATING PLANT
11. DINING HALL AND DORMITORY
12. SENIOR HALL
13. SPOONER HALL
14. HEALTH SERVICE
15. MUSIC HALL
16. GYMNASIUM





ST. PAUL CAMPUS



MINNEAPOLIS CAMPUS