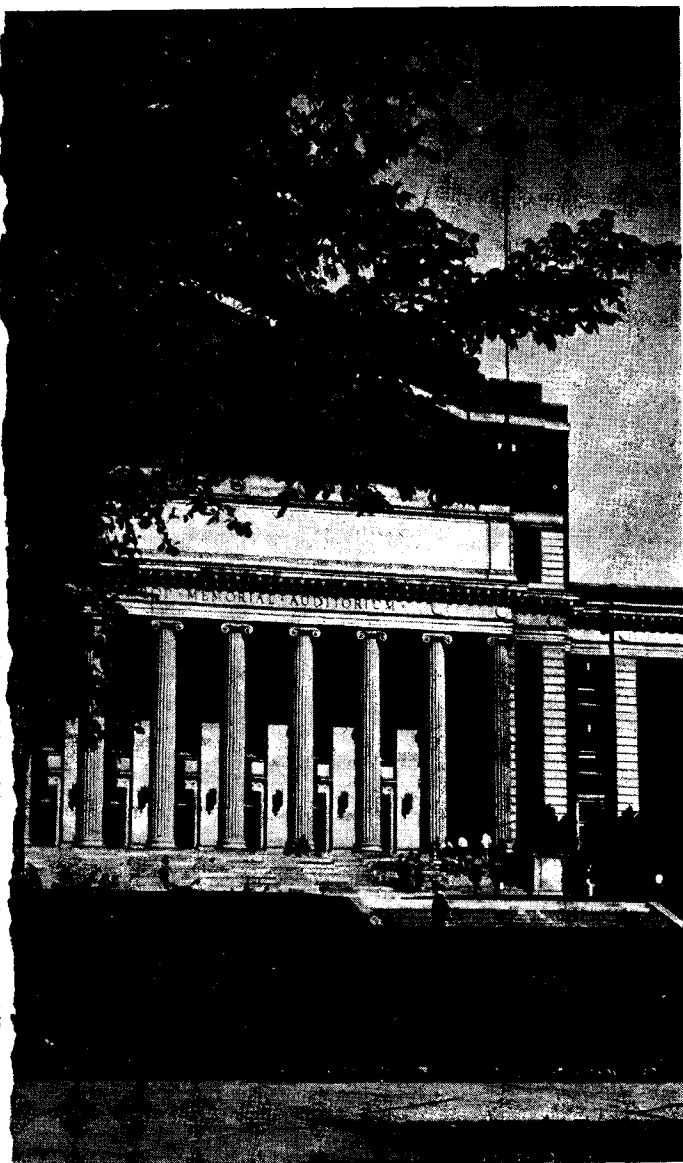


General Information

1960-1961



Cyrus Northrop
Memorial Auditorium

Bulletin

of the UNIVERSITY of MINNESOTA

INDEX

Administrative Committee	3	Incidental Fee	34
Admission to the University	4-10	Law School	17
Adult Specials	8	Library	25
Advanced Standing	8	Loans and Scholarships	29
Applications	4	Medical School	14
Examinations for Admission	8	Medical Technology	14
Graduate School	9	Minneapolis Campus—Map	40
High School, Admission from	4	Morris Campus	6, 13
Nonresidents	9	Morris Campus—Map	38
Preprofessional	9	Mortuary Science	7, 14
Professional Colleges	9	Music	27
Summer Session	8	Nonresident Students	9, 35
Transfers	9	Nursing, School of	7, 14, 15
Agriculture, Forestry, and Home Eco- nomics, College of	6, 13	Occupational Therapy	15
Athletic Purposes	36	Organization of the University	4
Board of Regents	3	Orientation	10
Business Administration, School of	16	Pharmacy, College of	17
Calendar	20-21	Physical Therapy	15
College Advisory Programs	24	Public Health, School of	16
Continuation Study	18	Recreational Opportunities	26-29
Correspondence Study	18	Art Gallery	26
Costs of University Attendance	32-33	Convocations	26
Counseling	23-24	Physical Education	28, 36
Degree Requirements	10	Social Programs	29
Degrees and Courses	10-18	Theater	28
Dental Hygiene	7, 13	Refunds	35
Dentistry	17	Registration	10, 20, 21
Duluth Campus	6, 12	Religious Activities	24
Duluth Campus—Map	37	Reserve Officers Training Corps	19
Education, College of	7, 13	St. Paul Campus—Map	39
Employment	30	Scholastic Standing Committees	24
Evening Classes	18	Science, Literature, and the Arts, College of	5, 10
Expenses	33	Selective Service	25
Extension Division	18	Social Programs	29
Fees	33-35	Special Services for Students	22-32
Fellowships	30	Speech and Hearing Clinic	24
Financial Aids	29	Sports	28, 36
Food Services	32	Student Activities	24
Foreign Students	22, 24	Summer Session	8, 18
Freshman Programs	10, 13	Technology, Institute of	5, 12
General College	5, 11	Tuition Fees	33
Graduate School	9, 18	University College	18
Handicapped Students	30	Veterans and War Orphans	25
Health Service	22	Veterinary Medicine, College of	17
Housing	30		

Front cover—Cyrus Northrop Memorial Auditorium. Inscription on facade:

FOUNDED IN THE FAITH THAT MEN ARE ENNOBLED BY UNDERSTANDING, DEDICATED TO THE ADVANCEMENT OF LEARNING AND THE SEARCH FOR TRUTH, DEVOTED TO THE INSTRUCTION OF YOUTH AND THE WELFARE OF THE STATE.

University of Minnesota

Board of Regents

The Board of Regents is composed of The Honorable Ray J. Quinlivan, St. Cloud, First Vice President and Chairman; The Honorable Charles W. Mayo, M.D., Rochester, Second Vice President; The Honorable James F. Bell, Minneapolis; The Honorable Edward B. Cosgrove, Le Sueur; The Honorable Daniel C. Gainey, Owatonna; The Honorable Richard L. Griggs, Duluth; The Honorable Robert E. Hess, White Bear Lake; The Honorable Marjorie J. Howard (Mrs. C. Edward), Excelsior; The Honorable A. I. Johnson, Benson; The Honorable Lester A. Malkerson, Minneapolis; The Honorable A. J. Olson, Renville; and The Honorable Herman F. Skyberg, Fisher.

Administrative Committee

O. Meredith Wilson, President, 202 Administration Building
Malcolm M. Willey, Vice President, Academic Administration, 200 Administration Building
Laurence R. Lunden, Vice President, Business Administration, 326 Administration Building
Stanley J. Wenberg, Vice President and Administrative Assistant, 202 Administration Building
Ray M. Amberg, Director of University Hospitals, B-313 Mayo
Ike J. Armstrong, Director of Athletics, 110 Cooke Hall
Robert O. Bowen, Colonel USMC, ROTC Representative, 203 Armory
Ruth E. Boynton, Director of University Health Service, W-334 Health Service
Rodney A. Briggs, Acting Dean, University of Minnesota, Morris
J. William Buchta, Chairman, University College Committee, 225 Johnston Hall
Walter W. Cook, Dean of the College of Education, 204 Burton Hall
Bryce L. Crawford, Jr., Dean of the Graduate School, 321 Johnston Hall
William H. Crawford, Dean of the School of Dentistry, 136 Owre Hall
Raymond W. Darland, Provost of the University of Minnesota, Duluth, 230 Science Addition
George P. Hager, Dean of the College of Pharmacy, 101 Wulling Hall
Edwin L. Haislet, Director of Alumni Relations, 205 Coffman Memorial Union
Robert B. Howard, Dean of the College of Medical Sciences, 1360 Mayo
Richard L. Kozelka, Dean of the School of Business Administration, 127 Vincent Hall
William B. Lockhart, Dean of the Law School, 125 Fraser Hall
Harold Macy, Dean of the Institute of Agriculture, 201 Coffey Hall, St. Paul Campus
Errett W. McDiarmid, Dean of the College of Science, Literature, and the Arts, 215 Johnston Hall
Keith N. McFarland, Assistant Dean, College of Agriculture, Forestry, and Home Economics, 202 Coffey Hall, St. Paul Campus
Horace T. Morse, Dean of the General College, 106 Nicholson Hall
Julius M. Nolte, Dean of University Extension, 152 Nicholson Hall
William L. Nunn, Director of University Relations, 213 Administration Building
Athelstan F. Spilhaus, Dean of the Institute of Technology, 107 Main Engineering Building
Edward B. Stanford, Director of Libraries, 107 Library
Robert Edward Summers, Dean of Admissions and Records, 232 Administration Building
William T. S. Thorp, Dean of the College of Veterinary Medicine, 256 Veterinary Science, St. Paul Campus
Edmund G. Williamson, Dean of Students, 200 Eddy Hall
E. W. Ziebarth, Dean of the Summer Session, 135 Johnston Hall

Volume LXIII, Number 4

February 15, 1960

BULLETIN OF THE UNIVERSITY OF MINNESOTA

Published semimonthly January 1 to November 15 inclusive. Second-class postage paid at Minneapolis, Minnesota. Send change of address notices and other communications to Office of Admissions and Records, University of Minnesota, Minneapolis 14, Minn.

How the University Is Organized

The University of Minnesota is governed, under its charter from the State, by its Board of Regents—12 citizens of the State elected by the legislature. Its chief administrative officers are the president, the provost at Duluth, two vice presidents, and the deans. Money to support the University's teaching, research, and service activities comes from legislative appropriations, from student fees, and from endowments, grants, and donations from many organizations and individuals.

The University grants degrees for programs offered on three campuses: Minneapolis, St. Paul, and Duluth; 1 year of college work is offered at Morris. Most of the colleges and schools, as well as the University's central administration, are on the Minneapolis Campus. The College of Agriculture, Forestry, and Home Economics and the College of Veterinary Medicine are on the St. Paul Campus. Other campuses include the University of Minnesota, Duluth, and the University of Minnesota, Morris. Each campus has an Office of Admissions and Records.

Who May Enter the University

The *colleges* of the University invite applications for admission from: (a) Minnesota residents who have been graduated from accredited high schools, or those who have Equivalence Certificates; (b) students who have completed some college work elsewhere; (c) nonresidents who present above-average high school or college records; (d) non-high school graduates who hope to qualify by examination; (e) mature men and women (usually 24 years or older) who want single courses or groups of courses to meet special personal needs and not for degree purposes.

The *professional schools* or *colleges* consider applications from students who have completed (depending on the individual college requirement) 1 to 3 years of pre-professional college level education.

The *Graduate School* considers applications from any student who has a Bachelor's degree from a recognized college or university.

How and When to Apply for Admission

All applications for admission to undergraduate schools are received by the University's Offices of Admissions and Records on the Minneapolis, St. Paul, Duluth, and Morris campuses. If you wish to apply for admission, you may secure application forms from any of these offices. Freshman application forms are also available at Minnesota high schools. All completed applications should reach the Office of Admissions and Records on the appropriate campus *more than a month before the desired entrance date*. This means that high school seniors planning to attend the University must apply promptly after graduation (well-qualified high school applicants are encouraged to apply during their senior year) if they hope to make full use of available advisory and counseling services and to plan appropriate programs. An admission certificate and registration instructions are directed to successful applicants.

Admission from High School

The admission requirements for high school graduates, who are residents of Minnesota, are outlined by college or division under the headings which follow. (See Nonresident Admission also.) In addition to such special requirements as are indi-

cated, freshman applicants for all programs for fall quarter 1960 and later are required to take the tests of the American College Testing program (ACT). Testing dates and schedule are announced to the high schools by the state co-ordinators for the American College Testing program. Each student participating in the program pays a \$3 testing fee. Specific ACT test score admission thresholds will not be used at this time.

Anyone who wishes to attend college but thinks he may not be admissible (because he did not graduate from high school or failed to take certain courses believed necessary for college entrance) and those in doubt about course offerings are invited to write to the Admissions Officer, University of Minnesota, Minneapolis 14. Almost every college of the University has made special arrangements to select worthy applicants regardless of their precollege training. Recommendations from high school principals or counselors are encouraged. See also Admission by Examination.

In the resident admission requirements listed below, a high school *unit* stands for a year of work of approximately 180 class hours in a subject.

College of Science, Literature, and the Arts

This College, the University's largest—usually called the "Arts College"—admits high school graduates who have college aptitude ratings of 40 or higher. The college aptitude rating is the average of the high school percentile rank and the college aptitude test percentile rank. Applicants should have completed 12 units in the last 3 years of high school, including at least 9 units from the following: English, social studies and history, mathematics, natural science, and foreign languages. Three of these units should be in English, 2 or more in mathematics, including 1 unit of plane geometry, and 2 or more in any one of the other areas specified. Algebra in grade 9 may count toward the mathematics requirement but not as 1 of the 12 units required from grades 10-12. A foreign language from grade 9 may count toward the language sequence, but not toward the 12 units required from grades 10-12.

Students with good high school ranks and test scores may be admitted even though they do not present the prescribed pattern of high school subjects. However, students planning college work in mathematics, business administration, or sciences, including medical sciences, in college should complete as much mathematics beyond plane geometry as possible, preferably including both higher algebra and trigonometry. These include students in the top 10 per cent of their high school graduating class and students in the top half of their high school class whose college aptitude test score is 40 or better.

Applicants not fully meeting the above requirements may be requested to submit additional information.

General College

The General College is open to any resident of Minnesota who is a graduate of an accredited high school. The main purpose of this 2-year college is to give the student an opportunity to obtain a general education at the college level. While doing this he may explore a variety of subject matter fields and test himself in college competition. This college does not set a minimum high school rank, special standing on college aptitude tests, or a particular pattern of high school subjects as requirements for admission.

Institute of Technology

The Institute of Technology—called by the students "IT"—consists of five colleges and schools to provide education in basic and applied physical sciences and in architecture. It is strongly recommended that students wishing to enter IT complete as much mathematics as possible, including higher algebra, solid geometry, and trigonometry. Courses in physics and chemistry are also highly desirable. If these courses are unavailable in the student's high school, consideration should be given to available correspondence courses (see *Bulletin of Correspondence Study*) and extension classes (see *Bulletin of Evening and Special Classes*). To be admitted to the Institute of Technology a high school graduate must satisfy the two major requirements detailed below:

First, he must be in the top half of his high school class and also meet the following course requirements: 12 units completed in grades 10-12, including 3 units in English, 3 units in mathematics (at least 1½ units of algebra and 1½ units in geometry, with 1 unit of ninth grade algebra counting toward the 3 units), and 3 or more units from among the following: foreign language, history, social science, and natural science.

Second, he must pass an achievement examination in high school mathematics. The content of the present examination is drawn from mathematics courses required for admission to the Institute. The results of this examination will be considered in determining an applicant's admission status. The required mathematics test will be made available to Minnesota high schools so that those high schools that wish to do so may administer the test. Seniors interested in applying for the Institute of Technology should contact their principal or counselor by March 1 to determine availability of the test. Those prospective applicants who are not able to take the test in high school should write to the Office of Admissions and Records for information about procedures to follow.

A full unit of general mathematics followed by a full unit of higher algebra may be substituted for the 1½-unit algebra requirement. If a student lacks either higher algebra or solid geometry, but not both, he can be admitted on the condition that he make up the deficiency by the end of his first quarter in residence. If this deficiency is not removed by the end of the first quarter, the student will not be permitted to continue in the Institute. A deficiency in solid geometry may be made up during the summer or any other period preceding entrance through correspondence or extension courses. As a last resort, a student may make up his deficiency in solid geometry during his first quarter in residence (without Institute credit) by correspondence study, evening extension classes, or registration in ITM 8 (information available at the College of Engineering Office, 133 Main Engineering). However, it should be emphasized that the first quarter in the Institute is a difficult one and every effort should be made to avoid the added burden caused by mathematics deficiencies.

Students not eligible for admission to the Institute of Technology directly may apply for transfer to the Institute of Technology after 1 or more years of satisfactory work in some other college, such as a local junior college, a liberal arts college, or the University General College. Work offered for transfer must meet the scholastic requirements of the Institute of Technology. Students who enter another college hoping to earn a later transfer to the Institute of Technology must consult with the counselors in that college at the very beginning of the school year in order to plan for this transfer and to receive help in planning their programs in relation to this goal.

University of Minnesota, Duluth

A college aptitude rating of 40 or more is required for admission to preprofessional courses or to curriculums leading to the B.A. or B.S. degree. Although no special grouping of high school courses is required it would be helpful to entering students to have taken a relatively strong college preparatory program in high school. Admission to the 2-year terminal program leading to the A.A. degree is based on a high school diploma or its equivalent.

Additional information about entering the University of Minnesota, Duluth can be obtained from the Office of Student Personnel Services, 130 Kirby Student Center, University of Minnesota, Duluth 12, Minnesota.

University of Minnesota, Morris

High school graduates will be admitted to the collegiate program at Morris if they rank in the upper 60 per cent of their high school graduating class or in the upper 60 per cent on appropriate college aptitude tests (such as those of the State-wide Testing Program). Graduates of high schools not meeting these thresholds will be considered for admission on the basis of the recommendation of secondary school principals, counseling, special testing, and other relevant data.

Additional information about entering the University of Minnesota, Morris can be obtained from the Registrar, Edson Hall, University of Minnesota, Morris, Minnesota.

College of Agriculture, Forestry, and Home Economics

Any high school graduate in the top 25 per cent of his graduating class may enter this College, without regard to the subjects taken in high school. However, the College prefers high school programs close to the divisional requirements described below.

High school graduates in the upper 75 per cent of their classes may enter if they have completed 12 units in grades 10-12. Nine of these should be in English, social studies and history, mathematics, natural science, and foreign languages. Distribution of these units with respect to the major areas included in the College program should be as outlined below. Students should note that although higher algebra is not a requirement for admission, it is a prerequisite for required

courses in the majority of curriculums in agriculture and forestry, and in preveterinary medicine. Therefore students are encouraged to secure higher algebra whenever possible.

Agriculture—3 units in English, 1 unit in elementary algebra plus 1 unit in plane geometry and 1 or more units in natural science or agriculture. Students without plane geometry who are making satisfactory progress in a correspondence or equivalent program in plane geometry at time of application will be considered for admission.

Forestry—3 units in English, 2 units in mathematics (elementary algebra and plane geometry) and 1 unit in natural science.

Home Economics—3 units in English, and 1 unit in elementary algebra. One unit in home economics may be included in the 9 basic units.

Preveterinary Medicine—3 units in English, 2 units in mathematics (elementary algebra and plane geometry), and 1 or more units in natural science or agriculture. Students wishing to prepare for the College of Veterinary Medicine should apply for admission to the College of Agriculture, Forestry, and Home Economics.

College of Education

Preparation for a number of teaching fields is open to high school graduates in the upper 60 per cent of their classes regardless of the high school courses they have completed. These fields are art education, business and distributive education, elementary education, industrial education, music education, nursery-kindergarten-primary education, physical education, and recreational leadership.

To enter teacher training in other fields, the College requires 2 years of preprofessional work in the Arts College or, for agriculture or home economics teaching, in the College of Agriculture, Forestry, and Home Economics. Students aiming at these fields must meet entrance requirements of the college they enter.

To gain advanced standing in this College, a student must have maintained an over-all C average, and an average midway between C and B in courses in his major. Application for admission with advanced standing should be made prior to June 1, for the next succeeding fall quarter, and by the Friday preceding fall and winter quarter final examinations for admission to the winter and spring quarters. Such students must also take preadmission psychological tests offered in the quarter preceding transfer.

Whether a student is well fitted for teaching is a matter the College examines both at his first registration and later at entrance into the Upper Division and into practice teaching. Students proceed with the work of their final 2 years after evaluation of their records and upon favorable recommendations concerning their progress as prospective teachers.

Dental Hygiene

The requirements for admission to the Program for Dental Hygienists are similar to those for the Arts College. Chemistry is required and high school typing is recommended. Applicants should be between 17 and 35 years of age. A 1-year Program in Dental Assisting is now offered through the General College.

School of Nursing

A qualified high school graduate in good health between 17 and 35 years old may enter the 1-year practical nursing program or the 6-quarter practical nursing and home management program offered jointly with the School of Agriculture. Those older than 35 are given individual consideration for either practical nursing curriculum. Students may enter these programs only in the fall quarter.

Other nursing curriculums require previous college work.

Mortuary Science

This department admits any high school graduate in the top 10 per cent of his class or those applicants who have a college aptitude rating of 35 or higher. The completion of basic units in high school science is recommended. Consideration will also be given otherwise well-qualified applicants who do not fully meet the stated admission requirements. Prospective applicants are urged to request individual counseling regarding opportunities in this field.

Other Admission Categories

Admission by Examination

A person 19 years of age or older, whether a graduate of a Minnesota high school or not, may apply for admission by examination. In most instances these tests are of the "objective" type and measure general aptitude for college work rather than knowledge of specific subject matter areas. Inquiries about procedures to follow should be directed to the Office of Admissions and Records.

Some persons under 19 years of age who have not graduated from high school may be admitted under a plan approved by the University, the Minnesota Council of School Executives, and the Minnesota High School Principals' Association. Such persons must be sufficiently mature to promise ready adjustment to university life and work and they must present outstanding high school records. Formal application, including letters of recommendation from the school principal and parents, is made to the Office of Admissions and Records. Personal interviews and comprehensive testing are also required.

All persons applying for entrance by examination should apply *more than a month in advance of the quarter they expect to enter.*

Admission with Advanced Standing

If a student has finished a year or more of work at an accredited college or university he may, if admitted, enter with "advanced standing"—that is, with credit for appropriate courses satisfactorily completed. Well qualified students who would be aided by a statement of provisional admission in advance of their termination at another college are invited to submit an indication of work done and programmed, along with a request for such consideration.

Applicants who have attempted any college study, satisfactorily or unsatisfactorily, must submit official transcripts, covering all work taken, from *every school attended*. They should make application and have all transcripts on file with the Office of Admissions and Records *more than a month before the beginning of the quarter they wish to enter.*

Students desirous of entering the University who have completed less than 1 year of study at another accredited college will often find it to their advantage to continue in that college, completing a successful year. Applicants who have had less than a year of college work must meet all requirements for entrance from high school and file their college records as well.

Advanced Standing by Examination—You can get credit for many university courses if you can show knowledge of the courses' contents by passing examinations. Such knowledge might be gained by taking courses in noncollegiate institutions, advanced work in high school, independent study, travel, military experience, or in other ways. You should take the examinations for this kind of credit during your first quarter at the University following the experience. Apply to your faculty adviser, or to your college office, for information.

Admission as an Adult Special

Men and women who want individual courses or groups of courses to meet special personal needs may be considered for admission to the individual colleges as "adult special" students. Usually these students are 24 years of age or older, and of mature experience or they have Bachelor's degrees. Persons applying are not candidates for degrees, but subsequent admission to a degree program is possible on recommendation of the college. In such case credit earned as an adult special will be applied when possible. Admission is completed through the Office of Admissions and Records. Restrictions on admission of nonresident undergraduate students apply to admission of adult students. Applications should be filed well in advance of the quarter of entrance.

Admission to the Summer Session

The two terms of the Summer Session are open to high school graduates under regular entrance regulations, to students already admitted to the University, and to those who are or have been in attendance at any accredited collegiate institution and who are in good standing. There are no nonresident restrictions. Students with credit from other colleges who are not candidates for degrees here may enter without filing credentials; but their admission to Summer Session gives them no claim to attendance in regular session. Students beginning their University attendance during the Summer Session who wish to continue in the regular academic year or who seek degrees here must apply for admission and submit credentials in the usual way.

Transfer from One College to Another

A student who wants to change at the University from one college, school, or Campus to another must meet the requirements of the second. Application for transfer should be made at the Office of Admissions and Records on the campus where the student is currently or was last registered.

The Transfer Bureau of that office aids in such changes by securing clearances, appointments for counseling, re-evaluation of credits, and in other ways. Students should apply to the appropriate Transfer Bureau as far in advance as possible of the actual date of transfer.

Admission to Professional Schools and Colleges

The professional schools or colleges require from 1 to 3 years of "preprofessional" education before accepting students. You may take this preprofessional work at Minnesota or elsewhere. To take it at Minnesota, you must meet admission requirements of the college offering the work, and also the preprofessional requirements listed in its bulletin (which you can get from the Office of Admissions and Records). Preprofessional work from other institutions must meet the same requirements.

Preprofessional work (minimal preparation) for specific colleges may be taken at the Duluth Campus, at the Morris Campus (1 year only), or as follows:

Business Administration—2 years in the Arts College; or in the College of Agriculture, Forestry, and Home Economics; or in the Institute of Technology.

Dentistry—2 years in the Arts College.

Education—2 years in the Arts College, or in Agriculture or Home Economics, or in General College; or graduation from an accredited school of nursing.

Law—3 years in the Arts College.

Medical—3 years in the Arts College.

Medical Technology—2 years in the Arts College.

Nursing—6 quarters in the Arts College.

Occupational or Physical Therapy—2 years in the Arts College.

Pharmacy—1 year in the Arts College.

Public Health—Requirements vary with program. See section on School of Public Health.

Veterinary Medicine—2 years in the College of Agriculture, Forestry, and Home Economics.

Admission of Nonresidents of Minnesota

The University will receive the applications for admission of non-Minnesotans who have above-average promise, superior high school or college records, and special interest in this University. This implies no commitment to such applicants. Freshman applicants are also required to take the tests of the American College Testing program. Specific ACT test core admission thresholds will not be used at this time. College Entrance Examination Board test scores are requested when available. Since individual consideration by the faculty concerned is usually involved, any non-resident should apply promptly, i.e., *more than a month in advance of the desired entrance date*. See Fees also.

Admission to the Graduate School

If you have a Bachelor's degree from a recognized institution you may apply for admission to the Graduate School. Your acceptance as an advanced degree candidate will depend on your undergraduate scholastic record, which must be high, and on approval by the department in which you want to take your major work and by the dean.

Inquiries and applications should be sent to the dean of the Graduate School. You should send with the application forms 2 official transcripts of your undergraduate work and 1 of any graduate work you have taken. Applications that arrive less than 4 weeks before the beginning of a quarter may not be approved in time for admission in that quarter.

Orientation and Registration

Each quarter the University helps the new students to get acquainted with the campus through informal "orientation programs." Through them you meet other students, new and old; you learn your way around the campus, and identify buildings and offices of special importance to you. You are introduced to campus life and activities, you meet with faculty members, and you are helped with registration procedures. A notice giving dates of orientation programs is sent to each new student soon after his admission. See the University Calendar for over-all dates for orientation and registration.

Degrees and Courses

Degrees and certificates awarded by the University are of wide variety. They range from certificates in highly specialized areas, such as that in practical nursing, to graduate degrees that may require years of advanced study. Most Bachelor's degrees require 4 years (12 quarters) of work.

The pages that follow tell in general terms about the University's courses of study. Some of them are open to students without preprofessional training—these courses, or curriculums, are described in the next section of this bulletin. Others, described later, require students to complete preprofessional work first. Each college or major division of the University has its own bulletin—in it you will find outlines of degree requirements as well as full descriptions of courses and regulations. Write to the Office of Admissions and Records for the particular bulletin you want.

If you are in doubt as to the direction your education should take, the University's counseling services are available to help you. See section entitled Counseling Aids.

Degree Requirements

Degrees from the University of Minnesota are granted by the Board of Regents on recommendation of the faculty. Here are the steps leading to the granting of a degree.

First, a student must meet all the course, credit, and grade average requirements of the school, college, or division of the University in which he is enrolled.

Second, he must meet residence requirements. This means that he must have spent at least a year in regular daily work at the University, of which 2 quarters must be in his senior year (if he has only 1 year of residence, it must be his senior year). Extension courses (not correspondence courses) in the Twin Cities and Duluth count as residence credit. Some schools and colleges have additional residence requirements.

Third, he must meet all financial obligations to the University.

Fourth, he must attend commencement exercises at which his degree is conferred unless he is excused by the dean of his college. If he fails to attend, his diploma will be withheld for a year, or until he attends another commencement.

Programs Open to Beginning Freshmen

College of Science, Literature, and the Arts

One of your major goals in the University is to strengthen your understanding of the world in which you live and the people with whom you associate—to gain what is usually called "a liberal education." The Arts College offers programs that help you toward these ends and at the same time provide preparation for future careers and occupations.

Through these programs you can earn a general education in the humanities, the natural sciences, and the social sciences, in addition to concentrating in 1 of the 30 departmental or inter-departmental areas. Through them you can explore many fields of human activity to help in choosing your vocation.

The Arts College offers a 4-year B.A. degree, and a 2-year A.L.A. degree.

The Bachelor of Arts Degree—This 4-year program gives you knowledge in major areas of thought and an opportunity to specialize in one of the following fields:

American studies, anthropology, architecture, art, astronomy, bacteriology, biostatistics, botany, chemistry, classics, economics, English, geography, geology and mineralogy, German, history, humanities, international relations and area studies, journalism, linguistics and comparative philology, mathematics, music, philosophy, physics, physiology, political science, psychology, Romance languages, Slavic and Oriental languages, Scandinavian, presocial work, sociology, speech and theater arts, pretheology, zoology.

If you do not find among these fields a "major" suitable to your interests and abilities, you may wish to plan an interdepartmental program tailor-made for your particular objectives. Such a program, by crossing departmental lines, may meet your needs better than a major within a single department. (But all Arts College programs involve work in a number of departments.)

Preparation for entering the Graduate School, in the fields listed above and in social work and library training, is offered by the Arts College. A professional major in journalism is also offered by the College.

In addition, the College co-operates with other colleges to offer three combined arts-and-professional courses:

Arts and Medicine—An 8-year course leads to B.A. and M.D. degrees.

Arts and Dentistry—A 7-year course leads to B.A. and D.D.S. degrees.

Arts and Law—A 6½ -year course leads to B.A. and LL.B. degrees.

In three other programs a student may complete all B.A. requirements concurrently with work leading toward another degree:

Arts and Architecture—A 6-year course leads to B.A. and B.Arch. degrees.

Arts and Dental Hygiene—A course of about 5 years leads to B.A. and G.D.H. (graduate dental hygienist) degrees.

Arts and Education—A course of about 4½ years leads to B.A. and B.S. in education degrees.

Professional Training—A basic liberal education is required in preparation for work in a number of the University's professional schools—1, 2, or 3 years of Arts College work. Professional curriculums requiring this kind of preparation are those in the Medical School, Law School, School of Dentistry, School of Business Administration, School of Nursing, and College of Pharmacy, and some of those in the College of Education. Specialized courses in nursing education, public health nursing, medical technology, and occupational and physical therapy also require preparatory work.

The Two-Year Associate in Liberal Arts Degree—This recognition of the completion of 2 years of satisfactory work in the Arts College is intended for 2 groups of students:

Those who plan to attend the University for 2 years only.

Those who, though working for a Bachelor's degree, desire formal recognition of the completion of the 2 years of work.

To earn this degree, you must ordinarily earn 90 credits in 6 or 7 quarters of residence, and you must meet specific requirements in English and in 3 of these 4 fields: foreign languages, humanities, social sciences, and natural sciences. Within these limits, you have broad choice from among hundreds of freshman and sophomore Arts College courses, and you and your adviser design your program to suit your own individual interests.

General College

General education, in which the General College has for years been a leader, aims essentially to produce well-rounded individuals—men and women who can understand the intricate patterns of the modern world, who can meet daily problems with a sound sense of values, who can live full and responsible lives.

A broad 2-year program of courses in the General College, leading to the associate in arts degree, is designed to help students toward this goal. As a student in this program you may, if you wish, combine with the more general courses certain courses to prepare you for specific occupations which do not require professional training, such as business, dental assistant, general office work, practical nursing, recreation activity leadership, retailing and selling.

The associate in arts degree is granted when you complete 2 years of work and achieve satisfactory standing in a comprehensive examination covering the general education program. If you wish to transfer to another college of the University, your work will be evaluated by the college of your choice. If it has been of satisfactory caliber, you ordinarily will be admitted with advanced standing. The amount of advanced standing will depend upon the program into which you transfer and will range from full value in programs requiring mostly liberal arts work to relatively small amounts in programs requiring many specialized courses and relatively few liberal arts electives.

The General College system of counseling and guidance for students is one of the major factors in the success of its general education program. Through this system, including carefully designed testing of individual abilities and aptitudes, advisers can help students plan course programs and extracurricular activities of greatest interest and personal benefit. General College counselors and instructors are always available to help students with problems in any way affecting their adjustment to university life.

Institute of Technology

The Institute of Technology offers various programs leading to the Bachelor's degree in its five colleges and schools. The colleges and schools and the degree curriculums they offer are tabulated below, all curriculums except chemistry being of 5-years' duration:

College of Engineering—Aeronautical, agricultural, civil, electrical, and mechanical engineering; applied mathematics.

School of Architecture—Architecture.

School of Chemistry—Chemical engineering, chemistry (4-year curriculum), metallurgy.

School of Mines and Metallurgy—Geological engineering (mining or petroleum), geophysics, metallurgical engineering, mining engineering (mining or petroleum).

School of Physics—Physics.

Certain engineering departments, including mechanical and electrical, permit specified work in industrial engineering to replace some of the optional engineering study of the 5th year and thereby provide an alternative path to the professional degree.

A co-operative work-study program in mechanical engineering providing practical work experience in conjunction with regular classes and laboratory work is available through co-operation with nearby industrial concerns. During part of their collegiate program students in the work-study curriculum are on a 12-month basis and spend alternative quarters in industry. While on the work assignments students are paid at regular rates by the company.

Also offered are combined curriculums with the Graduate School, the School of Business Administration, and the Law School. In some cases this may lead to two degrees. For additional details on the various programs see the *Bulletin of the Institute of Technology*.

Students who attain the necessary standards of performance and who desire to proceed to graduate work may obtain a bachelor of science degree by petition at the end of 4 years in any of the 5-year programs except architecture. The student may then begin a graduate program in his fifth year.

The Institute of Technology divides its undergraduate curriculums into a Lower Division and an Upper Division. Upon satisfactory completion of the requirements of the Lower Division, a student may, upon application, be awarded a Certificate in Science. For further information regarding this program and regarding admission to the Upper Division, see the *Bulletin of the Institute of Technology*.

University of Minnesota, Duluth

Four degrees are available at the Duluth Campus—the bachelor of arts (B.A.); the bachelor of science (B.S.); the associate in arts (A.A.); and the master of arts (M.A.). Preprofessional programs for transfer to other campuses are available.

The M.A. degree is available under Plan B (no thesis) in education or in curriculum and instruction. It has been authorized by the Graduate School and is an integral part of the graduate program offered by the University.

Four-year courses leading to Bachelor's degree offer majors in art, biology, botany, business and economics, business education, chemistry, elementary education, English, French, geography, geology, general science, German, history, home economics, industrial education, mathematics, music, nursery-kindergarten-primary education, health and physical education for men or for women, physics, political science, psychology, social science, sociology, speech, speech correction, and zoology. Minors in air science, general science, philosophy, recreation, and school health education also are offered. Students planning to teach in the secondary schools combine specific courses in education with the major chosen.

The 2-year course leading to the associate in arts degree is a general education program in which each student, consulting with an adviser, chooses courses to fit his individual need.

Preprofessional courses, designed to meet requirements of professional schools, are available in the fields of agriculture, agricultural education, dentistry, engineering, fishery and wildlife management, forestry, journalism, law, medicine, medical technology, nursing, pharmacy, social work, theology, and veterinary medicine.

University of Minnesota, Morris

No degrees are offered. The present program provides 1 year of college level work. Courses offered can be readily utilized in meeting the requirements for degrees in other colleges and institutions. Beginning instruction is also designed to meet the preprofessional requirements of professional schools in many fields. Consult the *Bulletin of the University of Minnesota, Morris*.

College of Agriculture, Forestry, and Home Economics

This College through its departments in agriculture and its schools of forestry and home economics—all on the St. Paul Campus of the University—offers Bachelor's degrees in a wide range of subject areas and, in some fields, advanced professional degrees. The 4-year courses that lead to the B.S. degree or its equivalent are:

Agriculture—Agricultural science, agricultural education, agricultural business administration, agricultural journalism, dairy industries, food technology, fishery and wildlife management, landscaping, science specialization.

Forestry—Forest resources management, building materials merchandising and light construction, forest products engineering.

Home Economics—General home economics, dietetics and food service management, home economics education (teaching and extension), home economics in business (foods and nutrition, textiles and clothing, related art), home economics with journalism minor (foods, related art, textiles and clothing), home economics and nursery school education, preparation for research in (a) experimental foods, (b) nutrition, (c) textiles and clothing.

Students anticipating admission to professional study in the College of Veterinary Medicine may secure the 2-year preprofessional curriculum requirements in this College.

In some fields, a fifth year of work leads to an advanced degree. In agricultural education and home economics education a student may earn a master of education degree.

College of Education

If your interest is in school work, the College of Education offers you a 4-year program leading to a B.S. degree and a Minnesota teaching certificate.

The variety of courses is virtually as wide as the combined offerings of many of the University's divisions. You can prepare for teaching in kindergarten and primary grades, in elementary, junior high, or high school grades. You can specialize in academic subjects such as English, Latin, French, Spanish, German, social studies, mathematics, science, or speech . . . or in special fields such as agriculture, art, business education, home economics, industrial arts, physical education and coaching, health and hygiene, music, or teaching of handicapped children. Some courses of study give you not a one-subject major but a broad field such as natural science or the social studies.

There are also 4- and 5-year programs for teachers of speech correction and for those interested in public health work, public health nursing, nursing education, and recreational leadership.

Master of education degrees, involving a fifth year of professional study, are offered in physical education for men, physical education for women, art education, music education, nursing education, industrial education, home economics education, agricultural education, early childhood education, elementary education, and rural education.

School of Dentistry

Program for Dental Hygienists—Beginning only in the fall, this program for young women comprises 2 academic years of work in the School of Dentistry with concurrent courses in the College of Science, Literature, and the Arts. The program qualifies its graduates to work in dental offices and public health agencies. Upon receiving the graduate dental hygienist (G.D.H.) degree, the graduate must obtain a license by passing an examination in the state in which she wants to work.

When students have completed the program, as specified in the *Bulletin of the School of Dentistry*, with a C average they may enter the College of Science, Literature, and the Arts. They may then qualify for the bachelor of arts (B.A.) degree provided that they fulfill the degree requirements of the Arts College.

Program in Dental Assisting—Offered jointly by the School of Dentistry and General College, this program prepares a young woman to perform a variety of duties as a dental assistant. The student's courses will prepare her to be a receptionist, make appointments, keep books, and assist the dentist at his chair. Students will register in General College, and the 1-year program qualifies them for a certificate in dental assisting. Credits earned during this year may also be applied toward requirements for the 2-year associate in arts (A.A.) degree. The additional year of work may be taken before or after the year in dental assisting.

School of Nursing

Practical Nursing—A certificate in practical nursing is granted students who finish the 4-quarter practical nursing program. This program prepares students for practical nursing service in general hospitals, public health agencies, homes, and hospitals for the chronically ill and aged. The credits in the practical nursing courses are applicable toward an associate in arts degree in the General College.

Practical Nursing and Home Management—For workers in rural health, the School co-operates with the School of Agriculture in providing a 6-quarter program. Those who finish it are prepared to give practical nursing service and to assist with the management of homes. Students must start this program in the fall quarter. Admission requirements are those for the School of Agriculture.

Mortuary Science

This course for young men and women may be entered at the beginning of any quarter or Summer Session. There are 2 plans for instruction—Plan A which consists of 9 academic quarters and Plan B which consists of 6 academic quarters. The work in both Plan A and Plan B is in a prescribed curriculum. Graduates, upon completion and awarding of the degree—associate in mortuary science—are eligible to write the state board examination in those states in which they have fulfilled the general and mortuary science educational requirements. Upon successful completion of state board requirements, graduates are eligible for licensure.

Programs Requiring Previous College Work

This section of the bulletin tells about University degree courses for which preparatory work is necessary. For complete information on any of the courses, you should get the bulletin of the school or college in which the work is offered.

Medical School

Course in Medicine—This program of study leads to the degree doctor of medicine (M.D.), and provides basic preparation for the practice of medicine for public health service, for medical teaching, and for medical research. The course requires at least 3 years of preparatory college work and 4 years in the Medical School.

Although 3 years of liberal arts and science education constitutes the minimum required for admission to the Medical School, the Admissions Committee gives preference to candidates with broad and strong undergraduate preparation. A thorough general education is of great value in the development of a physician and the equivalent of 4 academic years of liberal arts preparation, with a B.A. or B.S. degree program, is considered preferable to 3 years. The *Bulletin of the Medical School* gives details of entrance requirements, suggests appropriate course sequences, and outlines application procedures. Students interested in medicine are also encouraged to consult the annual "Admission Requirements" book of the Association of American Medical Colleges and counseling personnel in the office of the dean of the Medical School.

Medical Technology Course—This course, 4 years leading to a B.S. degree, provides basic preparation for work in clinical and research laboratory procedures used in hospitals, clinics, physicians' offices, and for teaching in training programs for medical technologists.

After 2 years in the Arts College, the student transfers to medical technology to complete the requirements in advanced science courses and the technical training period of 1 year in the laboratories of the University Hospitals. The last year includes clinical experience in hematology, bacteriology, serology, electrocardiography, basal metabolism tests, blood banking procedures, tissue preparation, and chemical analyses of blood and other body fluids.

Physical Therapy Course—A 4-year curriculum, open to both men and women students, leading to a B.S. degree. The program is approved by the Council on Medical Education and Hospitals of the American Medical Association. Graduates are eligible for registration with the American Registry of Physical Therapists and membership in the American Physical Therapy Association, the national professional organization. Qualified physical therapists administer physical therapy modalities under the direction of physicians and are employed in hospitals, rehabilitation centers, clinics, schools and other specialized institutions. After 2 years of Arts College work, the student enters the professional course in the College of Medical Sciences and spends 6 quarters in theory and practical application of physical therapy procedures, including a minimum of 600 clock hours devoted to practical experience in physical therapy departments affiliated with the University.

Occupational Therapy Course—Under medical supervision, graduates of this course are qualified to provide patients with therapeutic activities including arts, crafts, educational subjects and recreation. They work in rehabilitation centers, general, neuropsychiatric and children's hospitals, tuberculosis sanatoriums and in specialized institutions such as schools for the blind, deaf, or mentally retarded. After 2 years in the Arts College, the student transfers to occupational therapy where he spends 4 quarters studying theory and practical application. At least 9 months of clinical practice are required during the senior year. This course of 4½ years leads to a B.S. degree.

Continuation Study Program—The continuation course program gives the practicing physician and his associates in allied fields the opportunity of keeping abreast of latest developments in their professions.

The continuation courses, which last from 1 day to 2 weeks, are administered by the General Extension Division, the Center for Continuation Study, and the director of the Department of Continuation Medical Education. Courses include continuation study for practicing physicians in psychiatry, neurology, pediatrics, radiology, obstetrics and gynecology, internal medicine, surgery, dermatology, and others. Courses are also available in hospital administration, medical technology, dietetics, and nursing education.

School of Nursing

Basic Professional Curriculums—Sixteen quarters of college work are necessary to earn the basic degree, B.S. The first 6 quarters (2 academic years) may be taken in the Arts College or at any approved college offering the necessary biological sciences, social studies, and other general education courses. Ten quarters spent in the School of Nursing are devoted to the required professional major. Basic professional nursing is open to college graduates who have had satisfactory work in social and biological sciences, preferably sociology, psychology, chemistry, and zoology.

Bachelor of Science in Nursing Education—The B.S. degree program with a major in nursing education is offered jointly by the School of Nursing and the College of Education (the student registers in Education). A minor may be taken in a clinical field of nursing (medical, tuberculosis, surgical operating room, obstetric, pediatric, psychiatric, or rural) or in nursing administration. Students who lack certain basic nursing content may arrange to take it during the Summer Session.

Bachelor of Science in Nursing Administration—This program prepares graduate professional nurses for positions such as team leader, head nurse, or administrative supervisor. A minor may be taken in a clinical field of nursing such as medical, tuberculosis, surgical operating room, obstetric, pediatric, or psychiatric nursing. Students who lack certain basic nursing content may arrange to take supplementary experience.

Master's Program in Nursing Education—The program, which leads to the master of education degree (M.Ed.), is designed to prepare professional nurses for positions in nursing education such as faculty positions in schools of nursing and of practical nursing, directors of in-service education programs, educational positions in Army and Navy Nurse Corps, and in other organizations. This program is open to qualified professional nurses who have completed a baccalaureate program in an accredited college or university.

Master's Program in Nursing Administration—The program which leads to the master of nursing administration degree (M.N.A.) is designed to prepare professional nurses for positions in nursing administration such as those of directors, assistant directors, and supervisors. This program is open to qualified professional nurses who have completed an accredited baccalaureate program.

School of Public Health

Advanced courses for specialists in a number of public health fields lead to Master's or Bachelor's degrees. Master's degrees can be earned in the following fields:

Public Health Administration—A year or more of graduate work in public health theory and practice, open to physicians, dentists, and veterinarians, leads to the M.P.H. degree. Students with a broad scientific background may work toward an M.S. or Ph.D. in epidemiology. A limited number of fellowships are available for qualified epidemiology students under the National Institutes of Health Training Grant.

Environmental Sanitation—A year or more of graduate work in sanitation, open to graduate engineers with suitable experience who want to go into public health programs, leads to the M.P.H. degree. Suitably qualified sanitarians may also be admitted. Students with a broad scientific background may work toward an M.S. or Ph.D. in environmental sanitation.

Public Health Nursing—The M.P.H. degree may be earned by nurses who have had suitable undergraduate preparation and experience in the public health nursing field. Nurses with less typical undergraduate preparation and experience may be admitted for the M.S. degree on an individual basis.

The B.S. degree program with a major in public health nursing is available to properly qualified graduate nurses. Supplementary preparation in public health nursing is also available for graduate nurses who hold a baccalaureate degree but lack approved undergraduate preparation in this field of nursing.

Health Education—College graduates can earn the M.P.H. by 4 quarters or more of work in community health education. They must have adequate background in biological sciences, social sciences, and education, and at least 3 years of experience in public health.

Hospital Administration—A 2-year program leads college graduates with adequate training in economics, medicine, or nursing to the degree, master of hospital administration. One academic year is spent in formal instruction, and a full calendar year in a hospital as an administrative resident.

Biostatistics—Students with a broad scientific background may work toward an M.P.H. in vital statistics or toward an M.S. or Ph.D. in biostatistics. A limited number of fellowships is available for qualified biostatistics students under the National Institutes of Health Training Grant.

School of Business Administration

Admission to the School is earned by satisfactory completion of the 2-year prebusiness program. This program emphasizes a general background, along with specific preparation for the business curriculum. The program may be taken in a junior college, a liberal arts college, or in certain technical schools. At the University of Minnesota, it may be taken in the College of Science, Literature, and the Arts, the Institute of Technology, or the College of Agriculture, Forestry, and Home Economics.

On this background the School offers 2 years of professional training leading to the bachelor of science in business degree in the regular or in the accounting program. The general program consists of a core group of courses which comprises the fundamentals of business management, a background of economics, and business policy. The student may, in addition, choose electives in one or more fields, including industrial management and administration, statistics, industrial relations, insurance, transportation, accounting, finance, marketing, law, office management, and economics. Opportunities for internship experience are available in several of the areas listed above. The B.S. in Business program enables the student to plan for fields offered at the University, representing special business opportunities. This program also enables the superior student to enter the graduate program for a Master's degree in several specialties.

Preparation for positions as economic analysts or statisticians—in government service or private industry—is offered in two special sequences that lead to the degree of B.S. in economics.

Certain combined programs are available for students seeking professional training in another field, in addition to business administration. These combinations require additional time but lead to two degrees. Such combination programs have been arranged with the Institute of Technology and the College of Pharmacy.

Qualified students with a Bachelor's degree in liberal arts or in a technical field may prepare for management responsibilities in the program for the degree, master of business administration. Students interested in professional preparation for industrial relations may prepare for the degree, master of industrial relations.

School of Dentistry

Dentistry Program—Two years of preidental course work in an accredited liberal arts college is required for admission to the 4-year program leading to the doctor of dental surgery (D.D.S.) degree. A grade average of C or higher is required in all preidental courses, and must include 1 year of English, 1 year of zoology, 1 year of physics, 1 year of inorganic chemistry with qualitative analysis, and a complete organic chemistry course of at least ½ year. The science courses must include both lectures and laboratory work. In addition, a dental aptitude examination is required of all applicants. Further details concerning entrance requirements and suggestions regarding appropriate elective courses can be found in the *Bulletin of the School of Dentistry*.

Continuation Study Program—The School of Dentistry regularly offers a series of continuation courses in various phases of dentistry, dental assisting, and dental hygiene. These courses are intended to meet the needs of the profession for special material not covered in the undergraduate curriculum and in new developments in research and clinical procedures. Sessions usually are 3 days to 1 week in duration, and in many areas clinical practice is included. Special brochures listing courses, dates, and costs are available to those requesting that their names be placed on the mailing list. Inquiries should be mailed to the School of Dentistry or to the Center for Continuation Study, University of Minnesota, Minneapolis 14.

Law School

The Law School offers the professional degree of bachelor of laws (LL.B.) which qualifies one for bar examinations and admission to practice. The course of study in the Law School consists of 3 years plus 15 quarter credits of law, usually taken in 1 summer after the first or second year. Admission to the Law School requires:

1. A bachelor of arts degree or its equivalent; or

2. Completion of a special 3-year liberal arts program in S.L.A. will qualify the student for the B.A. degree from the Arts College upon successful completion of his first year of law.

Details with respect to the special 3-year liberal arts program, admission requirements generally, and the Law School may be found in the *Bulletin of the Law School*. Attention is directed to the fact that a student's prelaw scholastic record and the results of the Law School Admission Test given by the Educational Testing Service at Princeton, New Jersey, will be considered in determining his admissibility.

College of Pharmacy

The art and science of pharmacy deals with the preparation, compounding, and dispensing of medicinal agents and the study of their chemistry, pharmacological properties, and therapeutic applications.

The work of the prepharmacy year may be taken at any accredited institution. If a student wishes to spend still another year at an accredited school before enrolling in the College of Pharmacy and meets the scholastic requirements for admission to this professional college (see *Bulletin of the College of Pharmacy*), he may complete the prescribed course in pharmacy in 3 years provided he has completed courses in physics, biology, organic chemistry, general economics, and accounting, equivalent to those described in the *Bulletin of the College of Pharmacy*.

Upon the satisfactory completion of all the courses of the prescribed curriculum, the student will qualify for the B.S. in pharmacy degree.

The College also offers an optional combined 5- or 6-year course in pharmacy and business administration. Evidence of above-average academic ability is required for admission to this course.

College of Veterinary Medicine

Training in veterinary medicine requires a minimum of 2 years of college level study in pre-veterinary curriculum as prescribed in the *Bulletin of the College of Agriculture, Forestry, and Home Economics* and the *Bulletin of the College of Veterinary Medicine*. Upon completion of the preveterinary requirements, the student may apply for admission to the 4-year professional curriculum. Satisfactory completion of the professional curriculum leads to the degree of doctor of veterinary medicine (D.V.M.).

It is desirable that prospective students have farm experience prior to entering the College of Veterinary Medicine.

Graduates in veterinary medicine are prepared for private practice, federal, state, and municipal government employment in disease control work, teaching and research, and for service in the U. S. Public Health Service or as veterinarians in the Armed Forces.

University College

This College draws upon the entire University for its courses. It has no fixed curriculum. Its purpose is to provide flexibility in the educational program of the undergraduate who finds none of the standard curriculums of the other schools and colleges suited to his interests or particular objectives. Such a student, with the approval of the University College Committee, may arrange a study program to fit his individual needs. Upon completing it he is granted either a B.A. or a B.S. degree.

Information about University College is available at the University College Office, 225 Johnston Hall, University of Minnesota, Minneapolis 14.

Graduate School

Students who have Bachelor's degrees or their equivalents may apply for admission to graduate work and undertake work for advanced degrees at two levels: the degrees master of arts, master of science, master of business administration, master of fine arts, master of forestry, or master of social work; or the degree doctor of philosophy. In the fields of educational administration, school psychological services, and elementary school administration, the Graduate School offers beyond the Master's degree the specialist in education certificate.

Graduate programs leading to the master of arts degree with majors in education and in curriculum and instruction have been authorized at the Duluth Campus. All graduate students taking these programs are regularly enrolled in the Graduate School.

Inquiries about graduate work should go to the dean of the Graduate School, 316 Johnston Hall, University of Minnesota, Minneapolis 14.

Other Study Opportunities in the University

Summer Session

Two terms of regular University courses are offered each summer. In each term you can take about half as many credits or courses as in fall, winter, or spring quarter; in the 2 terms you can complete a full quarter's work.

Most major divisions of the University offer summer courses.

Courses are offered in Minneapolis, St. Paul, and Duluth and at the Forestry and Biological Station in Itasca State Park.

General Extension Division

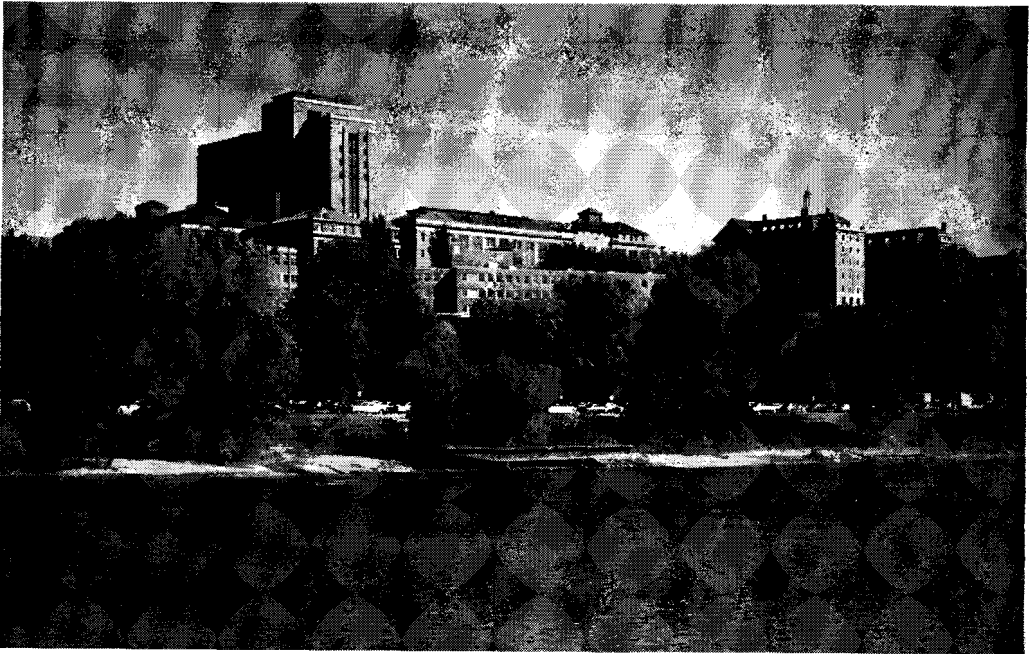
Evening and Special Classes—Evening and special classes are available to adult students in the Twin Cities, Duluth, and other communities in the state. They are of collegiate level and include many of the regular University subjects, as well as special courses designed to meet specific needs or interests. There are no general admission requirements; classes are open to anyone who, through education, experience, or maturity, is able to handle college level work. There are specific admission requirements for University degree programs, some of which can be completed entirely in evening classes, and for Extension certificate programs. Address: 57 Nicholson Hall, University of Minnesota, Minneapolis 14.

Correspondence Study—The Correspondence Study Department offers high school, collegiate, and general courses by home study, designed to be used toward university degrees or certificates, or for occupational or personal interests. Specific limitations as to the amount of degree credit allowed for correspondence work vary as to the degrees concerned. Correspondence courses may be commenced at any time and are open to any qualified student, no matter where he lives. Address: 251 Nicholson Hall, University of Minnesota, Minneapolis 14.

Center for Continuation Study—The Center is a special self-contained unit, with living and teaching facilities, on the Minneapolis Campus. Short courses, conferences and institutes, lasting from a few days to several weeks, are offered—mostly at an advanced level—for men and women in professional, business, and industrial fields. Address: Center for Continuation Study, University of Minnesota, Minneapolis 14.

Reserve Officers Training Corps

The ROTC, through its three services—Army, Navy, and Air Force—gives college men students an opportunity to combine military or naval training with their academic work. Students are eligible for ROTC enrollment if they are registered in academic course leading toward degrees, if they are United States citizens, and if they meet physical and other qualifications. The general requirements of the three services, and their special characteristics are described in the *University Bulletin of the Army-Navy-Air Force ROTC*. An Air Force ROTC unit is located on the Duluth Campus.



The Minneapolis Campus is on the banks of the Mississippi River.

UNIVERSITY CALENDAR

Academic Year, 1960-61

Fall Quarter

August 1-September 23		Fall registration. Orientation program for new students. Dates for the various colleges will be announced in mailed instructions. Students are urged to register early. It is expected that all students who can do so will register in August.
September 5	Monday	Labor Day, holiday
September 15	Thursday	Fall quarter fees due for students registered through September 9
September 16-24		New Students' Camps, September 16-18; New Students' Parents' Day, September 18; Welcome Week, September 18-24. Details announced in instructions issued at orientation
September 23	Friday	Last day for registration and payment of fees for the undergraduate colleges
September 26	Monday	Fall quarter classes begin 8:30 a.m. Minneapolis, upper Duluth, and Morris; 8:00 a.m. St. Paul and lower Duluth
September 29	Thursday	Opening convocation, 11:30 a.m., IV hour classes excused (except Duluth and Morris)
September 30	Friday	Last day for registration and payment of fees for the Graduate School and for teachers in service
October 12	Wednesday	Columbus Day, holiday
October 15	Saturday	Homecoming Day (Minneapolis)
October 29	Saturday	Homecoming Day (Duluth)
November 3	Thursday	Senate meeting, 3:30 p.m.
November 11	Friday	Veterans' Day, holiday
November 24	Thursday	Thanksgiving Day, holiday
November 25-28	Friday, Saturday	Classes excused (except Medical School and College of Veterinary Medicine)
December 8	Thursday	Senate meeting, 3:30 p.m.
December 9-15		Final examination period
December 15	Thursday	Commencement, 8 p.m.
December 17	Saturday	Fall quarter closes

Winter Quarter

December 26	Monday	(Sunday, December 25, Christmas Day), holiday
December 27	Tuesday	Winter quarter fees due for students in residence fall quarter
December 29-30	Thursday, Friday	Orientation program; registration for new students in all undergraduate colleges
January 2	Monday	(Sunday, January 1, New Year's Day), holiday
January 3	Tuesday	Registration resumes. Winter quarter fees due for new students in all undergraduate colleges. Winter classes begin
January 6	Friday	Last day for registration and payment of fees for the Graduate School and teachers in service
February 2	Thursday	Senate meeting, 3:30 p.m.
February 20-26		University of Minnesota Week
February 22	Wednesday	Washington's Birthday, holiday
February 23	Thursday	Charter Day Convocation, 11:30 a.m., IV hour classes excused
March 9	Thursday	Senate meeting, 3:30 p.m.
March 10-11 and 13-16		Final examination period
March 16	Thursday	Spring quarter fees due for students in residence winter quarter in undergraduate colleges
March 18	Saturday	Commencement, 8:30 p.m. Winter quarter closes

Spring Quarter

March 23-24	Thursday, Friday	Orientation program, registration and payment of fees for new students in all undergraduate colleges
March 27	Monday	Spring quarter classes begin

March	30	Thursday	Last day for registration and payment of fees for the Graduate School and for teachers in service
March	31	Friday	Good Friday, holiday
April	27	Thursday	Senate meeting, 3:30 p.m.
May	18	Thursday	Cap and Gown Day Convocation (Minneapolis) 11:30 a.m. IV hour classes excused
May	30	Tuesday	Memorial Day, holiday
June	1	Thursday	Cap and Gown Day Convocation (Duluth) 11 a.m. IV hour classes excused; Senate meeting, 3:30 p.m.
June 3 and 5-9			Final examination period
June	4	Sunday	Baccalaureate service, 3 p.m.
June	9	Friday	Commencement (Duluth) 8 p.m.
June	10	Saturday	Spring quarter closes; Commencement (Minneapolis) 8 p.m.

General Extension Division, 1960-61

Fall Semester

September	12	Monday	Registration for fall semester begins
September	21	Wednesday	Last day for registration, fall semester
September	26	Monday	Fall semester classes begin
November	11	Friday	Veterans' Day, holiday
November	24	Thursday	Thanksgiving Day, holiday
December	17	Saturday	Christmas recess begins
January	3	Tuesday	Classes resume
January	30	Monday	Spring semester registration begins
February	4	Saturday	Fall semester classes close

Spring Semester

February	8	Wednesday	Spring semester registration closes
February	13	Monday	Spring semester classes begin
February	22	Wednesday	Washington's Birthday, holiday
May	30	Tuesday	Memorial Day, holiday
June	10	Saturday	Spring semester classes close

A few Extension classes are offered on the quarter basis on the same schedule as day school with registration beginning 2 weeks preceding the opening of classes for the fall quarter and 1 week preceding the opening of classes for the winter and spring quarters.

Correspondence study courses may be started at any time.

Summer Session

First Term

1960			1961	
June	13	Orientation and registration for first term	June	12
June	14	First term classes begin 8 a.m. Minneapolis and Duluth, 7:30 a.m. St. Paul; fees due	June	13
July	4	Independence Day, holiday	July	4
July	14	Commencement, 8 p.m.	July	13
July	16	First term closes	July	15

Second Term

July	18	Registration and payment of fees for second term	July	17
July	19	Second term classes begin	July	18
August	18	Commencement, 8 p.m.	August	17
August	20	Second term closes	August	19

Special Services for Students

University Health Service

Student health is a major concern of the University as well as of the individual student.

On the Minneapolis Campus complete facilities are provided in the University Health Service building adjacent to the University Hospitals.

On the St. Paul Campus, general medical and infirmiry-type hospital care is provided in the Health Service building located on Cleveland Avenue. St. Paul Campus students also have access to the Minneapolis Campus facilities.

Services at Duluth and Morris include consultation, physical examination, care of illnesses and injuries, immunizations, laboratory tests, physiotherapy, and some medication. The Health Service at Duluth is located in the Residence Hall Units A.

Incidental Fee Benefits, Minneapolis and St. Paul Campuses

Medical care and health counseling are provided for all students. No charge is made to students for medical examinations, for general care, or for consultations with a specialist on physical or mental health problems. Medical care is given to a hospitalized student without charge, except for surgery. Students also receive specialized services, such as allergy testing and treatment, eye examinations, and laboratory services. Physical therapy and X-ray therapy are provided up to a limit of \$30 per quarter. Charges are made on a cost basis or less for drugs, glasses, and dentistry.

Hospitalization—It is the practice of the Health Service to admit to the hospital all students (especially those whose homes are outside the Twin Cities) who are sufficiently ill to require bed rest, even for short periods of time. If you live in a dormitory or rooming house, you usually cannot receive proper nursing care, adequate meals, or sufficient medical care if you remain in your room during an illness. The duration of your illness can be shortened in many instances if treatment is begun early in the course of the disease, thus saving considerable time through prompt hospitalization. Hospitalization for obstetrical care is not included.

Students without Hospital Insurance—Such students are entitled to thirty (30) free days of hospitalization each quarter including all extras (except private duty nursing). However, free hospitalization for the same illness is limited to 30 days. Hospitalization benefits do not cumulate from quarter to quarter.

Students with hospital insurance who feel they have adequate hospital insurance may choose to take a refund on the hospitalization portion of the incidental fee which is \$2 per quarter. Students accepting this refund may be hospitalized at the Health Service but will pay the full cost of hospitalization and themselves collect from their insurance company. To obtain the refund, students must present their fee statement and proof of insurance to the business office of the Health Service during the first 10 days of each quarter.

Students with hospital insurance may wish to have additional coverage. They may do so by not taking the \$2 refund. Then if hospitalized, the Health Service will bill the insurance company and after receipt of this payment the Health Service will pay the remainder of the hospital bill for as many days as the two programs provide. If the insurance payment plus the Health Service allowance for hospitalization overpay the bill, a credit for the difference will be set up in the student's name. This credit may be used for any future charges of the Health Service except dentistry, glasses, or drugs. If not used, this credit will revert to the Health Service when the student leaves the University.

Foreign Student Health Fee Benefits

Experience has shown that many foreign students have illnesses or accidents that require prolonged hospitalization, the costs of which far exceed the benefits of the incidental fee. Since noncitizens are not eligible for city, county, or state hospital care, great hardships to some students have occurred. To avoid such hardships foreign students are now required to carry additional health protection at a cost of \$5 per quarter unless they have acceptable health insurance, by which they may be eligible for exemption from this fee. Any student who thinks he might qualify for this exemption should apply within 10 days of the opening of the quarter to the business office of the Health Service.

Optional Plan for Supplemental Blue Cross-Blue Shield Coverage

Students who choose to be covered under the special student Blue Cross-Blue Shield plan will have added protection for those services not available at the University Health Service.

These are:

1. Hospitalization and medical-surgical care for emergencies away from the Health Service during the school year.
2. Hospitalization and medical-surgical care when hospitalized during the summer months when the student is not eligible for care through the University Health Service.
3. Surgical fees during the school year if hospitalized in University Hospitals.

Dependents—Dependents are not eligible for care through the University Health Service. Therefore, the benefits of the Blue Cross-Blue Shield program are available to covered dependents throughout the year. Maternity care is available under Blue Cross and Blue Shield only after a family contract has been in effect for nine (9) consecutive months.

Additional information on the above services may be obtained from the business office at the University Health Service, Minneapolis Campus.

Counseling Aids

The services of a staff of professional counselors are available to assist students learn more about and better understand their own abilities, interests, personalities, and emotions. These counselors assist students with their progress in college and with problems related to University life. Many students, at one time or another, may face questions such as: How can I learn to study more effectively? What vocation shall I plan to enter? How can I best manage my budget? How may I find satisfactory housing? What should I do about a speech or hearing difficulty? How can I improve my education through student activities? Assistance in answering these questions can be found in the individual agencies listed below or in the Office of the Dean of Students, 200 Eddy Hall on the Minneapolis Campus, or 215 Coffey Hall on the St. Paul Campus.

Duluth Campus students should consult the Counseling Office, 150 Kirby Student Center.

Students at the Morris Campus should consult the Counseling Office in Edson Hall.

Student Counseling Bureau

The Student Counseling Bureau, 101 Eddy Hall, offers specialized counseling and testing services to students who wish to learn more about themselves or who have personal problems which they would like to discuss with a trained counselor. You may wish to see a counselor about vocations you are considering, courses you may wish to take, methods of reading and studying effectively, or other personal problems. Nearly one-third of our University students have talked at some time to these counselors about marriage and family relations, dating, engagements, relations with parents, choice of vocation, and similar matters. Special services are provided for physically handicapped students and a special library of information about occupations is available to students. The Educational Skills Clinic in the Bureau offers help in reading and study skills, spelling, and basic arithmetic.

A problem may make itself felt in any one of several ways. Worrying about the lack of money for example, may show itself through seriously affecting your grades. If you wish to review your progress in school or if you have problems that worry you, you are urged to talk with the Bureau's counselor.

Precollege counseling is available at a small fee to those who have not yet entered the University (no fees are charged University of Minnesota students). When you consider applying for admission to the University, you are encouraged to come to the Student Counseling Bureau for information about the different colleges in the University, courses available to you, and various University services for students.

Student Activities Bureau

The University believes that taking part in student activities is a significant part of college education. To give students an opportunity to participate in community life, several hundred student groups—professional, social and cultural, religious and recreational, athletic and oratorical, everything from departmental to the campus-wide student government group—have been organized. The Student Activities Bureau, located in 106 TSMa, exists to aid new groups toward sound organization, to supervise and guide groups in matters of program and finance, and to help individual students in selecting their extracurricular activities.

Foreign Student Adviser

Students from other countries are urged to call at 302 Eddy Hall, the office of the Foreign Student Adviser. Staff members in this office aid foreign students in meeting the problems of federal, state, and local regulations; aid in questions of liaison with the student's own government; and offer information and counseling on problems of a personal and educational nature. Referral of individual students is also made to appropriate campus agencies for assistance with problems of inadequate language proficiency, financial planning, and academic performance.

Religious Activities Coordinator

Student programs of religious activity—an important part of campus life at the University—operate through a wide variety of denominational and interreligious groups. The Office of the Co-ordinator of Students' Religious Activities, 211 Eddy Hall, serves as a center where information may be secured concerning the 27 religious organizations on the Minneapolis and St. Paul campuses. Liaison is provided between the University and the diverse religious groups, their pastors, priests, rabbis, and advisers.

Speech and Hearing Clinic

Students with speech or hearing difficulties are urged to contact the Speech and Hearing Clinic in 205 Shevlin Hall. Here they will receive a free speech and hearing analysis and counsel concerning the possibility of reducing or eliminating any handicap they may have. If clinical help is needed, the student is assigned several appointments each week to work on his problem under the direction of one of the professional staff members of the Clinic. Students may receive help for such problems as stuttering, defective articulation, voice quality deviations, foreign accent, and handicapping speech anxieties. Students with a hearing problem may receive speech therapy and training in lip reading. A fee of \$5 per quarter is charged for these services. On the Duluth Campus, a speech and hearing clinic located in 130 Humanities Building offers assistance in the speech and hearing problems listed above.

College Advisory Programs

Most of the University's schools and colleges have advisory and counseling programs for their students. Each student is assigned to an adviser who helps him with course and other problems, and some of the schools and colleges maintain employment and job-counseling services as well. Students should discuss with their advisers their academic progress at least 2 or 3 times a year.

Scholastic Standing Committees

Each college has a faculty committee (some have student members, too) charged with interpreting the regulations of the faculty, or making exceptions to them if warranted. A student should consult the committee if he is in doubt about a college rule or thinks the rule should not apply to him. Committee headquarters are usually in the college office.

Veteran, War Orphan, and Selective Service Information

Public Law 550 and 634, Veterans and War Orphans

If you were in the Armed Forces of the United States before February 1, 1955, you may be eligible for educational benefits under Public Law 550 (the so-called "Korean G.I. Bill").

If you are the son or daughter of a person who died of injury or disease incurred or aggravated in line of duty in the Armed Forces during World War I, II, or the Korean conflict, you may be eligible for educational benefits under Public Law 634, the War Orphans' Educational Assistance Act of 1956.

For either law, you can obtain application blanks and additional information at the Veterans Administration, Fort Snelling; 102 Administration Building, Minneapolis Campus; or 125 Kirby Student Center, Duluth Campus. The Veterans Administration will not pay you until you make application and you should complete this before you start classes. You pay your own fees and buy your own books under these laws. Full payments for undergraduates are made for 14 credits per quarter (or more) and proportionate payments are made for smaller loads.

If you have already applied for these benefits and obtained a Certificate for Education and Training for use at the University of Minnesota, you need only present the certificate at the Veterans Account Window (No. 18) on the first floor of the Administration Building (or at 220 Coffey Hall, St. Paul Campus or the Business Offices at the Duluth Campus or Morris Campus) and show your receipted fee statement which indicates that you have completed your registration.

Each time you begin attending classes again after a period of interruption, or in June or September, you must ask for a recertification at the appropriate Veterans Account Window.

Every Public Law 550 or 634 student must, by requirement of the Veterans Administration, fill out and present a monthly report of attendance. This is filed at the Veterans Account Window between the first and the sixth day of each calendar month. Public Law 550 and 634 students at the Duluth and Morris campuses should report to the Business Office.

Public Law 894 Veterans

If you are a veteran registering under Public Law 894, you should make 102 Administration Building your first contact with the University. This office provides assistance to disabled veterans of the Korean conflict with matters pertaining to registration and the interpretation of Veterans Administration regulations affecting University programs. It provides counseling and authorizes textbook and supply orders for such veterans.

Veterans attending under this law at the Duluth Campus should report to the Office of Student Personnel Services upon first registration. Veterans at the Morris Campus should notify the registrar.

Selective Service Certification

Because its men will be more useful citizens when they have completed their education, the nation's Selective Service policy encourages qualified students to stay in school as long as they can. If you place high enough in your class each succeeding year (or make a high enough score on the Selective Service College Qualification Test), you can request continued deferments for full-time study until you receive the Doctor's degree. Complete information about the qualifications, help in making out the necessary forms, and counsel in solving your personal Selective Service problem are available at 102 Administration Building. In advance of coming to the campus, you may obtain on request a folder of information on Selective Service as it will apply to you here.

Students on the Duluth Campus should consult the Office of Student Personnel Services.

Morris Campus students should consult the registrar's office.

Library Facilities and Services

Most of the publications which students need to consult in college, beyond the required texts used for individual courses, are available in the University's system of libraries. With nearly two million volumes, the University library ranks in size among the ten largest university research libraries in the United States. In addition to the thousands of periodicals, newspapers, and reference books used for course-related

study and research, the library resources also include extensive collections of literary, historical, and biographical works for recreational reading.

General Libraries

Upperclassmen and graduate students particularly will find the Walter Library on the Minneapolis Campus well supplied with publications. There are outstanding collections in many areas such as European and American literature and history, political science, and sociology.

For students in their first 2 years of college there is a separate freshman-sophomore library in Johnston Hall. Here are provided, under open shelf conditions, most of the books needed in connection with courses at the Lower Division level. The patrons of this library are also encouraged to use the Walter Library, especially when they need more specialized sources of information, such as periodical literature, for the preparation of term papers and reports.

On the St. Paul Campus there is a modern central library housing publications in agriculture and home economics, with outlying specialized collections in forestry, biochemistry, veterinary medicine, entomology, and plant pathology.

The Duluth Campus also has a general collection of books and periodicals housed in the new library building on the upper campus.

The library on the Morris Campus is located in Edson Hall.

Departmental Libraries

The library needs of students in several of the more specialized scientific and professional fields are met on the Minneapolis Campus through various departmental libraries housed outside of the Walter Library. Among these are such separate libraries as Engineering, Law, Chemistry, Art, Journalism, Geology, Music, Mines and Metallurgy, Pharmacy, and the Bio-Medical Library.

Cultural and Recreational Opportunities

Convocations

Most Thursday mornings, at 11:30 o'clock, the University holds its convocation program for students, faculty, staff, and the public, usually in Northrop Memorial Auditorium. Programs range from lectures on vital current topics to music and dance recitals and dramatic offerings. The purpose of the convocations, which are taped and rebroadcast by KUOM, is to bring ranking figures in current thought, news, science, adventure, entertainment, and the arts before the University and its community.

On the Duluth and Morris campuses, a carefully selected program of convocations is presented at various times each quarter. Professional speakers and talent of high caliber appear.

University Gallery

The University Gallery, located on the third and fourth floors of Northrop Memorial Auditorium, the center of the Minneapolis Campus, stresses a frequently changing program of art exhibitions. These exhibitions, announced through the press, radio, and Gallery publications, include paintings, sculpture, drawings, prints, and other arts of the past and the present. The Seminar Gallery, located in 315 Northrop Memorial Auditorium, is maintained for the showing of carefully selected examples of contemporary art, as well as for a workshop for small exhibitions of an interpretive nature.

The permanent collection of the University Gallery, largely composed of works by American artists of the 20th century, includes major collections of works by Hartley, Maurer and Nordfeldt, on extended loan from Ione and Hudson Walker and Mrs. B. J. O. Nordfeldt, in addition to paintings by Feininger, Marin and O'Keeffe. A sculpture collection of works by noted contemporary artists is being formed through the John Rood Sculpture Collection. The University Gallery is also actively engaged in adding to its collection of prints by artists of all periods. Selections of works from these permanent collections are regularly on view in the third floor galleries.

The University Gallery also provides three lending programs for the staff and students at the University of Minnesota: Office Loan Collection, Student Rental Collection, and Pictorial Reference Files. The Office Loan Collection includes framed original works of art which may be

borrowed by staff members for their campus offices; pictures may be selected by appointment and are loaned for a calendar year; this program is a courtesy to staff members and there is no charge. The Student Rental Collection includes framed original prints as well as reproductions of well-known paintings; pictures may be borrowed during the first week of each quarter (thereafter at certain hours) and are to be returned at the close of each quarter; this program is intended for the pleasure as well as education of the borrower and a nominal fee is charged. The Pictorial Reference Files provide mounted photographs and color reproductions for individual study and reference by both staff and students, as well as for study exhibitions posted in the third floor east exhibition area; materials may be borrowed or posted for the desired length of time; there is no fee.

For further information concerning the exhibitions, collections, or lending programs of the University Gallery, please inquire at the gallery offices in 310 and 316 Northrop Memorial Auditorium, or call extensions 6200 or 6514.

On the Duluth Campus, the new Tweed Gallery offers a year-round exhibition program. The famous Tweed Memorial Collection containing paintings of the 16th through 19th centuries, dominated by the Barbizon School, is housed in the gallery.

Music

Participation in campus musical life is open to students in all colleges on both campuses—not only to music majors—both in Department of Music courses and in the volunteer musical organizations it directs. All musical groups present concerts each quarter, open free to the general public. Credit is offered for those desiring it.

University Bands consist of: (1) Concert Band Ensemble has the best possible instrumentation of a wind ensemble whose membership is selected by personal audition from the total band membership; (2) Football Marching Band plays at all the fall quarter football games and at one out-of-state football game; (3) Varsity (Activities) Band is of full concert band proportion designed for the student who is avocationally interested in music or who is preparing for membership in the Concert Band Ensemble. University Bands headquarters is 14 Northrop Auditorium (basement).

University Symphony Orchestra rehearses weekly on the stage of Northrop Auditorium where it performs its three annual concerts of standard orchestral literature. Its office is 107 Scott Hall.

University Chorus, composed of 250 mixed voices, prepares major symphonic-choral works for annual performances with the Minneapolis Symphony Orchestra, University Symphony Orchestra, and University Concert Band. Auditions are arranged in 204 Scott Hall.

University Chamber Singers is made up of 24 to 30 select, mixed voices which are known for their treatment of difficult, lesser-known compositions and contemporary music. Auditions take place in 204 Scott Hall.

Men's Glee Club, newly formed in the fall of 1955, prepares standard glee club material as well as special arrangements for on- and off-campus appearances. The director is to be found in 4 Music Education Building.

Women's Glee Club has been recently organized. This group prepares standard women's glee club material for on- and off-campus appearances. It is hoped that this group will combine with the men's glee club for occasional joint appearances. Auditions are held in 206 Scott Hall.

St. Paul Campus Chorus is primarily for students on the St. Paul Campus and for special events there.

Music Hour—Informal music hours, open to students, staff, and general public, take place at 11:30 a.m. each Tuesday in Scott Hall auditorium. Faculty and students, as well as guest artists and lecturers, appear at Music Hour.

Music students are given priority to act as ushers at all concerts presented in Northrop Auditorium by the Minneapolis Symphony Orchestra, Artists Course series, and the spring appearances by the Metropolitan Opera Company, as well as various other events.

The professional music fraternities on campus—Sigma Alpha Iota and Phi Mu Alpha, Sinfonia—present a series of operas each year, directed and performed entirely by students.

The Music Department offers courses in music appreciation, music history and literature, music theory and composition, music education, and applied music (piano, organ, voice, violin, trumpet, percussion, etc.). Private lessons are available in applied music to students regularly registered at the University and to students not able to attend day classes full time.

Major concerts and musical attractions are regularly brought to Northrop Auditorium by the Department of Concerts and Lectures. The University Artists Course presents a number of top flight recital artists, ballet, and world famous musical organizations on the campus each year. Season tickets for the Artists Course, at remarkably low prices, are sold at the office in 105 Northrop Auditorium.

The Minneapolis Symphony Orchestra, with Stanislaw Skrowaczewski as conductor, makes its home in Northrop Auditorium on the Minneapolis Campus, and offers its annual series of evening and Sunday afternoon concerts there. Special season ticket rates are open to students and faculty. The Symphony office is in 110 Northrop Auditorium.

A spring season of the Metropolitan Opera is also brought to the campus under the combined sponsorship of the Department of Concerts and Lectures and the Minneapolis Orchestral Association. This season of opera usually comes the middle of May and presents four operas by the Metropolitan Opera Company.

At Duluth, students also have the opportunity to enjoy one of America's outstanding community symphony orchestras—the Duluth Symphony. The University orchestra offers excellent opportunities for musical performance and enjoyment. A number of community artists' courses round out an exceptional cultural climate. Campus choral and instrumental groups have active programs.

Students at Morris will have an opportunity to participate in choral and instrumental groups dependent upon their interests.

Theater

Each year the University Theater presents a diversified program of living drama. The high standing of the University Theater is indicated by the fact that it was selected by the Defense Department for tours of Europe (1957) and the Orient (1958), and also by the State Department for a tour of Brazil (1957). The major drama season at Scott Hall consists of five full-length plays offering the finest in dramatic literature to the student body at a nominal fee. In addition, the University Theater sponsors an Arena series in Shevlin Hall, a Young People's series, a Foreign Language series, a Studio series of experimental and student-directed plays, and innumerable one-act plays throughout the year. In conjunction with the Department of Concerts and Lectures it operates two touring companies, and in co-operation with the Department of Music it presents operas. Perhaps the most popular project to date has been the Centennial Showboat, which plays a 10- to 12-week season each summer on the Mississippi. With such an extensive program, students interested in the theater find ample opportunity to participate both as technicians and actors.

The University Theatre at Duluth presents an outstanding play each quarter and additional stage performances in a new studio theater.

Morris Campus students likewise have the opportunity to participate in dramatics.

Museums

"Habitat exhibits," nearly a hundred displays of Minnesota animal life mounted in typical environment, are featured in the ivy-covered Museum of Natural History on the Minneapolis Campus. These exhibits are open to the public, without charge. In addition, many thousands of specimens of reptile, amphibian, bird and mammal life are available here for study by students and qualified visitors.

A number of smaller specialized exhibits—such as rare books in the University Library and scientific and technical collections in other departments—are maintained for use and study by University classes and the public.

Physical Education, Athletics, and Sports

Elaborate opportunities for sports and exercise are open to both men and women students. Though the intercollegiate athletics program for men is best known, nonvarsity sports attract several times as many participants each year.

For women, instruction in a wide variety of seasonal sports, dance, body conditioning, as well as recreational activities, centers in the Norris Gymnasium for Women. All instruction is under expert leadership. The Women's Athletic Association is comprised of organized activity programs and honorary clubs in aquatics, modern dance, tennis, badminton, riding, tumbling, and golf; these activities are under joint faculty and student leadership and are open to all women in the University. The facilities of Norris Gymnasium for Women which are open to all women students in the University include 2 large gymnasiums, 2 swimming pools, a field house, a study-lounge, and a siesta room.

For men students a broad plan of organized intramural sports and other leisure time activities is supplemented by extensive facilities for recreation. Cooke Hall, the Memorial Stadium, the Field House, and the Williams Arena provide abundant opportunity for gymnastics, handball and squash, boxing and wrestling, swimming, skating, and other recreational activities. Outdoor playing fields and tennis courts, the indoor ice skating rink, and the two golf courses near the St. Paul Campus are open to both men and women.

In addition to an extensive program in health and physical education for men and women,

anging from an outstanding intramural schedule to many special interest clubs, the Duluth Campus enjoys intercollegiate athletic competition in the Minnesota Intercollegiate Athletic Conference. The University at Duluth fields teams in football, basketball, swimming, hockey, track, golf, skiing, tennis, and wrestling.

Activities at the Morris Campus include intramural competition in football, basketball, softball, and other athletic events. In addition there is individual competition in swimming, track, and golf.

General Social Programs

Students organize much of their social and extracurricular activity around the facilities of three Unions.

At the Coffman Memorial Union on the Minneapolis Campus, full-time program consultants aid Union student committees in planning and conducting a wide variety of recreational and social enterprises. For student groups, the Union has meeting and office rooms, general lounges, 2 ball-rooms, a card room, restaurant and soda fountain facilities, an aircraft workshop, billiard and pool tables, and a 16-lane bowling alley.

The Union on the St. Paul Campus and the Kirby Student Center on the Duluth Campus have similar facilities. The Village Union at University Village, for married students and their families, provides not only similar facilities but also play center facilities for small children. Facilities are also provided on the Morris Campus for social and extracurricular activities.

Financial Aids

Student Loans

Should you need financial aid or advice, the Bureau of Student Loans and Scholarships, 201 Eddy Hall, may be able to help you. Loan funds have been set up to help any student who is making normal progress toward an educational objective. Usually you must have finished 2 quarters at the University before a loan will be granted you, but emergency needs get special consideration. Students who are interested in loans provided for under Title II of the National Defense Education Act of 1958 should apply through this office.

Students at Duluth should go to the Office of Student Personnel Services, 125 Kirby Student Center.

Scholarships and Merit Awards

Scholarships for entering freshmen, chosen from among graduates of Minnesota high schools, are offered through the Bureau of Student Loans and Scholarships. This fund is supported by gifts from alumni and friends of the University through the Greater University Fund. The scholarships, which range from \$200 to \$500, are awarded to applicants on the basis of scholarship, character, leadership, vocational and academic promise, and relative need. Applications should be made through Minnesota high school principals in January.

Direct blood descendants of World War I veterans who were in the service 6 months before the armistice, and who have completed 2 quarters of satisfactory work at the University, may be eligible for the LaVerne Noyes resident tuition scholarship. Application and discharge papers must be filed each quarter before September 1, December 1, and March 1. Grants are limited to a maximum of 6 quarters.

After the student has established a record of achievement at the University, other scholarships and merit awards are offered in many of the University's fields of study, usually as cash grants in recognition of outstanding achievement. Information about these awards is announced through the Official Daily Bulletin.

Generally speaking, and with regret, the University is not able to offer scholarships to non-residents or transfer students until they have made a deserving record at this University.

The Duluth Campus has a number of scholarships and awards available to its students. Information may be obtained from the Office of Student Personnel Services, 125 Kirby Student Center, University of Minnesota, Duluth.

Information concerning scholarships available on the Morris Campus can be obtained from the registrar, Edson Hall, University of Minnesota, Morris.

Graduate Assistantships and Fellowships

Graduate students have open to them a number of teaching assistantships and fellowships—usually requiring part-time work—in many University departments. You can get information about these from the Graduate School or the college concerned.

Counselorships

For selected graduate students there are a number of counselorships, in dormitories and fraternities, which provide room and board and require part of their holders' time. The Office of the Dean of Students can furnish information about these positions.

Aids for Handicapped Students

Under certain conditions blind students are eligible for tuition scholarships. Application for aid should be made at the Office of Admissions and Records (window 18).

"Rehabilitation funds" for the education of disabled persons are available through the State Department of Education. Applications for aid from these funds should be sent to the Division of Vocational Rehabilitation, State Office Building, St. Paul 1.

Student Employment Bureau

If you need a job to help meet school expenses, the Student Employment Bureau, 153 TSF, will help you find part-time work either on or off campus. Apply in person at the Bureau after you have enrolled and know your class schedule. On the Duluth Campus, go to the Placement Office, 140 Kirby Student Center; or at Morris, go to the Business Office. Your chances of being placed depend on the supply of jobs, your qualifications, your need, and the hours you have available. Very frequently a job will provide valuable experience as well as financial assistance. Work for board and room is usually available for grils, and sometimes for men or married couples.

Housing Facilities

Most out-of-town students live either in University-maintained residence halls, in private housing, or in fraternities or sororities.

Information concerning residence halls may be obtained by writing to the director of the hall selected. This information as well as information about private housing and fraternities or sororities may also be obtained from the Student Housing Bureau, 209 Eddy Hall, Minneapolis Campus, or 215 Coffey Hall, St. Paul Campus.

University Residence Halls

Living in a residence hall has many advantages for the student. The halls, located close to class buildings and to the student unions, offer comfortable living with well planned healthful meals, served under the direction of a trained dietitian. Opportunities for counseling, health supervision, student government, social and athletic programs are provided. All residence halls are modern, fireproof brick buildings, constructed in accordance with the highest safety standards. The 1959-60 rates range from \$3.04 to \$3.63 per day for board and room (\$229-\$276 per quarter), payable in monthly installments.

Application should be made early for accommodations in University residence halls. *Final acceptance by the University is not necessary before applying.* Cancellation may be made without penalty if the residence hall is notified by September 1 or immediately following nonacceptance by the University.

MINNEAPOLIS CAMPUS

Halls for Women

SANFORD HALL, accommodating 280 freshman, upperclass, and graduate women, is located on University Avenue S.E. near the main entrance to the campus. Priority is given to freshman women up to July 15.

COMSTOCK HALL accommodates 540 sophomore, junior, senior, and graduate women in large double and single rooms (no double-deck beds). A limited number of freshman women will be admitted. It is situated along the Mississippi River close to the center of University life.

POWELL HALL is located at 500 Essex Street S.E. near the University Hospitals. It accommodates 407 junior and senior nursing students, interns, and doctors on call. Some students earn board and room by working in the University Hospitals.

Halls for Men

PIONEER, CENTENNIAL, TERRITORIAL, and FRONTIER HALLS are located in a quadrangle on the edge of the campus near the East River Road. These halls accommodate 2,360 men. Special houses for graduate students are available. Many residents can earn part of their board and room by work in the halls.

ST. PAUL CAMPUS

BAILEY HALL is a new attractive residence hall with a wing for 156 men and another wing for 152 women in double rooms. Meals for residents of this hall are served in the new cafeteria connected by tunnel.

Other accommodations may be available in **BREWSTER** and **MEREDITH HALLS**.

DULUTH CAMPUS

Accommodations are available for 118 women in Residence Hall Units B on the Upper Campus. Residence Hall Units A will accommodate 56 men students. All meals for residents are served in the nearby Kirby Student Center Cafeteria. Information and applications for reservations may be obtained by writing to Head Residence Counselor, 101 Kirby Student Center, University of Minnesota, Duluth.

MORRIS CAMPUS

Separate dormitories are available for both men and women. Further information may be obtained from the Business Office at the University of Minnesota, Morris.

University Housing for Married Students

COMMONWEALTH TERRACE, new permanent apartments for married students located on the St. Paul Campus, provide housing for 220 families in 1- and 2-bedroom units. Present rates are \$70 and \$80 per month unfurnished except for stove and refrigerator. Priority is given to Minnesota residents with children.

UNIVERSITY VILLAGE, midway between the Minneapolis and St. Paul campuses, and **UNIVERSITY GROVE EAST**, adjacent to the St. Paul Campus, have a limited number of temporary housing units for student families. Minnesota resident veteran families with children receive priority. Present rates are \$45 per month unfurnished except for stove.

THATCHER HALL, for married graduate students only, is located at the edge of the St. Paul Campus. The building contains efficiency and 1-bedroom apartments at \$62.50 and \$70 per month furnished.

The demand for family housing is great and an early application is advisable. Applications for any of the four locations should be sent to Director of Housing, 108A Westbrook Hall, University of Minnesota, Minneapolis 14.

Private Housing

Vacancies in apartments, housekeeping units, and sleeping rooms are reported to the Student Housing Bureau, where students may get help with housing. Non-University housing is inspected to secure adequate housing standards for health, safety, and study conditions. Married students have found it desirable for one member of the family to come and live in temporary accommodations while looking for quarters for the entire family.

Rooms or apartments in private residences must be engaged "on the spot"—no reservations can be made before arrival on campus. Students should make arrangements for housing at an

early date before classes begin to be assured of adequate quarters. Single students, under 21 years of age, must have approval of the Student Housing Bureau to live in an apartment.

All students, married or single, who select quarters not already approved by the University, must get the approval of the Student Housing Bureau director before occupying them. The Bureau recommends that in either case you sign a rental agreement on a University form, and for 1 quarter at a time.

Whatever lease arrangement you make, housing regulations provide that you must give notice according to pay period if you plan to move. Any change of address must be reported to the Bureau. The Bureau is the agency to consult in case of problems or difficulties about housing, or about your privileges, rights, and obligations. Use of Bureau counsel in a dispute is likely to lead to a satisfactory conclusion.

Women students living in private rooms and rooming houses are expected to follow hour regulations established for the University's women's residences. They may entertain callers in suitable rooms until 12 midnight any night of the week. Earlier hours may be established with mutual agreement of householder and students.

Moving to Fraternities and Sororities

Joining a fraternity or sorority does not excuse you from a rooming contract until it has ended. If you plan to move to a fraternity or sorority house, you should make the move at the expiration of your contract or room commitment, or at such time as you are able to furnish a substitute to take over your contract. Information on rush week and fraternity and sorority pledging may be obtained from the Student Activities Bureau, 114 TSMa, University of Minnesota, Minneapolis 14.

Food Services and Restaurants

Minneapolis Campus

A variety of food service facilities is available to students in Coffman Memorial Union. Largest is the cafeteria, on the ground floor. There are also a soda fountain, a lunch counter, and "commuters' lunchrooms" for students who bring lunches from home. Banquet, party, and private dining room facilities are also available.

Shevlin Hall has a cafeteria and lunchroom for students. There are also several privately operated restaurants, lunch counters, tearooms, and soda fountains near the campus.

St. Paul Campus

The Agricultural Cafeteria provides full food service for students. Lunchroom and soda fountain facilities are available in the new Student Center.

Duluth Campus

The Kirby Student Center cafeteria provides complete food services, including banquets, regular meals, snacks, and picnic menus. Washburn Hall, on the lower campus, has a lunchroom for students.

Morris Campus

Students living in dormitories will eat at the dining hall cafeteria. The Student Union also has a lunch counter and a "commuters" lunchroom for students bringing lunches from home.

How Much Will It Cost?

A prospective college student always must ask, "How much will it cost?" Whether he is "on his own," earning some or all of his own funds, or getting aid from parents or others, he asks the inevitable question of University advisers.

A general answer is, for residents of Minnesota, about \$1,300 for 3 quarters except for dentistry, medicine, and veterinary medicine where expenses are about \$1,900. Nonresidents should add up to \$400 for the higher tuition required of students from out of state.

This general answer has to be qualified at once, for there are many factors that can't be tied down to specific figures. In the table of estimated expenses the largest

ESTIMATED AVERAGE EXPENSES OF MINNESOTA RESIDENTS

Fall, Winter, and Spring Quarters, 1960-61

College	Fees ¹	Books and Supplies ²	Room and Board ³	Total
Dentistry, Medicine	\$465	\$600	\$828	\$1,893
Veterinary Medicine	395	600	828	1,823
Mortuary Science	365	100	828	1,293
Law, Medical Technology, Physical and Occupational Therapy	320	100	828	1,248
Other schools and colleges	285	100	828	1,213

¹ Includes tuition, incidental, and other fees. Actual charges normally will not vary more than \$10 from this amount.

² Cost may vary. Includes \$500 for dental instruments and \$500 for microscope for medicine and veterinary medicine.

³ University Residence Hall rates for 1959-60 were from \$687 to \$828 for room and board.

item is that for board and room. In some cases these board and room estimates will be too high—many students, living at home or with relatives, make no cash outlay for board and room; others “work out” board and room costs. Depending on tastes and special situations, the cost may be higher.

Moreover, an estimate such as this does not take into account laundry and clothing expenses, nor any cost for such items as recreation, travel, and other incidentals.

So you should consider the estimates in the table not as exact figures, but as general guides.

Fees

Tuition

The table shows the basic tuition fee in each University division. It also shows, except in the Graduate School, that a student taking only a few credits a quarter may pay tuition on a credit-hour basis. You pay your fees at the time you register, before you begin your quarter's work. Fees for auditors are the same as for students registered for credit.

Graduate students of certain classifications who are giving 25 per cent or more of full-time service to the University are privileged to pay tuition at the Graduate School resident rate, regardless of source of fund, resident status, or curriculum pursued. Those included are fellows, scholars, assistants, instructors, research associates, and member of the teaching staff and scientific bureaus and experiment stations; they must be regularly enrolled in the Graduate School or be in the final year of the Master's degree curriculums in undergraduate colleges. Civil service appointees working 75 per cent time or more are eligible for the same privilege. Faculty members at the postdoctoral level may audit courses without registration or payment of fees. Should the need arise, an official class audit card may be obtained from the Graduate School.

Students of one college taking work in another pay the tuition fee of their own college. If you wish to apply credit for such work toward a degree from a higher fee college you must pay the tuition difference. This rule does not apply to students who have paid fees for the full normal period of residence in the higher fee college.

TUITION FEE

School or College	Quarter Fee		Credit Hour Fee	
	Resident	Non-resident	Resident	Non-resident
Agriculture, Forestry, Home Economics; Business Administration; Dental Hygiene; Duluth; Education; General College; Morris; Institute of Technology; Public Health (except Hospital Administration); Science, Literature, Arts	\$ 71	\$180	\$ 6.00	\$15.00
Dentistry and Graduate Work	130	255	11.00	21.25
Graduate School, more than 6 credits	71	180	No credit hour fee provided	
6 credits or less, or thesis only	35.50	90		
Law School and Graduate Work; Medical Technology; Physical and Occupational Therapy	85	180	7.25	15.00
Medical School and Graduate Work; Hospital Administration	135	265	11.25	22.25
Mortuary Science	100	180	8.50	15.00
Nursing, Basic and Practical	71	105	6.00	8.75
Nursing Administration	71	180	6.00	15.00
Other programs	85	180	7.25	15.00
Pharmacy and Graduate Work	76	185	6.50	15.50
University College	Tuition of college in which work is taken			
Veterinary Medicine and Graduate Work	110	245	9.25	20.50

Incidental Fee

If you are registered for 6 or more credits in a quarter you pay the \$20 fee which entitles you to the privilege of the student unions, the University Health Service, the *Minnesota Daily*, and helps to support the student government. Students in the Institute of Technology pay 85 cents more a quarter and receive in addition the *Minnesota Technologist*. The incidental fee at Duluth and Morris is \$20 and includes similar services.

The incidental fee is required of all students in the Graduate School, except teachers in service taking less than 6 credits, Ph. D. candidates during their final quarter of registration, and students doing research away from the campus.

Any student for whom the incidental fee is not required may obtain the privileges by paying the fee on an optional basis.

Foreign Student Health Fee

All noncitizens are required to pay a Foreign Student Health Fee of \$5 each quarter. See section on University Health Service for explanation.

Matriculation Deposit

This deposit (\$5) you pay at registration for your first quarter. It covers miscellaneous departmental charges, library fines, like costs. If the deposit is used up before you leave the University, you pay an additional \$10 to reinstate your account.

If charges against your deposit do not use it up by the time you graduate or leave the University, the unused remainder will be refunded to you by mail.

This deposit is not required at Duluth or Morris.

Special Fees

Additional fees are charged for special services as follows:

<i>Advanced Standing Examination Fee</i>	\$5.00	<i>Course Fees</i>	
Such an examination may be taken only upon approval of the appropriate committee. (If it is taken during the first quarter after entering or re-entering the University, no fee.)		Civil Engineering Summer Camp; Modern Language Institute; Music Lessons; Physical Education; Preparatory Composition, English, Mathematics; Public Health; Rhetoric. See <i>Class Schedule</i> issued at registration.	
<i>Credentials Fee</i>	\$5.00	<i>Music Practice Fees</i>	
Required of nonresidents applying for admission to Law, Medicine, Dentistry, Education (Upper Division), Business Administration, and Veterinary Medicine.		For rent of pianos, organs, and music practice rooms. Rates are given in the <i>Class Schedule</i> issued at registration.	
<i>Dentistry Examination Fee</i>	\$26.00	<i>Placement Service Fee</i> —required of degree candidates from:	
For examinations to determine advanced standing in Dentistry.		Duluth	\$5.00
<i>Deposits</i>		Institute of Technology (first certificate or degree)	2.50
Agricultural Biochemistry	\$5.00	College of Education (except Nursing Education Majors)	7.50
Art	5.00	<i>Privilege Fee</i> —for late registration or late payment of fees	
Chemistry	10.00	Through third day of classes	\$2.00
Pharmacy	5.00	Each additional day (to a \$5 maximum)	.50
Physiological Chemistry	5.00	Late change of registration	2.00
To cover cost of materials and breakage. Unused portion is credited to students' matriculation deposit at end of course.		<i>Record Service Fee</i>	\$1.00
<i>Duplicate Diploma Fee</i>		This fee, deducted from students' matriculation deposits, provides three certified copies of student records.	
To replace large diploma	\$7.50	Each additional copy	1.00
To replace small diploma	5.00	<i>Special Examination Fee</i>	\$5.00
<i>Graduation Fee</i> (including small diploma)		<i>Speech and Hearing Clinic Fees</i>	
Each degree	\$10.00	See <i>Class Schedule</i> issued at registration.	
<i>Hospital Insurance Fee</i> (Duluth)		<i>Thesis Binding Fee</i>	
Per quarter	\$6.00	Master's thesis	\$2.50
Required of all students taking 6 or more credits.		<i>Thesis Examination Fee</i>	
<i>Large Diploma Fee</i>	\$5.00	For professional engineer degree	
Any graduate may get a large diploma in place of a small one, by paying this fee in addition to the graduation fee.		<i>Thesis Publication Fee</i>	
<i>Microscope Rental Fee</i>		Ph.D. thesis	\$25.00
Partial use, one quarter	\$3.00		
Continuous use, one quarter	6.00		

Refunds

If you cancel your registration before 6 weeks of any quarter have passed, you are entitled to refund of tuition, incidental, and course fees on this basis: If you do not attend classes at all, you get full refund; if you cancel within the first week, you get 90 per cent; within the second, 80; third, 70; fourth, 60; fifth, 50; sixth, 40. After the sixth week there is no refund.

Nonresident Students

Nonresident tuition fees will be charged students who have not had permanent homes in Minnesota for a least a calendar year. The completion of a year's stay in Minnesota does not in and of itself establish residence for University purposes and a person who moves to Minnesota coincident with attending school may not be able to demonstrate that he is acquiring residence.

The student from out of state who proposes to establish residence must assume the burden of proving conclusively that he has been a resident here the requisite time with the intention of making his permanent home in the state.

Although a student's classification may be changed whenever all necessary residence requirements are met, it is his responsibility to initiate action. If there is any question about your classification, resident or nonresident, you should apply to the Office of Admissions and Records for consideration of your status.

Athletic Purposes

The following statement on athletic purposes is published in compliance with the athletic regulations of the North Central Association of Colleges and Secondary Schools:

The University of Minnesota's concept of the purpose of sports and athletics developed early in the institution's history. From the beginning of recreational sports and athletics on the University campus the men and women responsible for these activities have sought to relate them to the ideals, principles, and purposes of the institution's broad educational policies. Thus, from the early days of class, intramural, and intercollegiate games there has existed an increasing awareness of the special contributions of sports and athletics to the educational programs and experiences of those students who participate voluntarily for the pleasures and values to be obtained from these activities and those preparing for professional courses as athletic coaches, recreational workers, and the like.

In this past is to be found the philosophy from which arise the many specific purposes of present-day programs, including the following:

1. To provide opportunities for students to engage voluntarily in physical activities and programs of physical fitness which will contribute to their personal health and the national welfare.

2. To encourage students to develop interest in a variety of physical activities and sports which are so pleasant and satisfying to them during residence at the University that many will continue their interest and activity after leaving the campus.

3. To provide adequate facilities for both men and women students to participate in physical fitness programs including recreational games, sports, contests, and athletics outside the regularly organized courses in physical education.

4. To provide qualified and competent staff to teach the values inherent in recreational sports and athletics within the environment of the University. Desirable outcomes included are a sound understanding of the athletic exercise or contest, the required skills, the rules of sportsmanship, and the spirit of clean competition and the will to win; and, also, to develop sportsmanlike, appreciative, and intelligent spectators.

5. To emphasize such corollary values of supervised sports and athletics as the experience of team play and working co-operatively with others; respect for rules; character development; group loyalty; leadership in group activity; and associations, friendships, and social relationships through sports.

6. To give recognition to the contribution of sports and athletic activities in developing the personality of the individual student, particularly with respect to the attainment of a balanced adjustment in social, intellectual, and emotional activities.

7. To advance esprit de corps in terms of loyalty, spirit, and institutional morale, and to acknowledge the important roles of sports and intercollegiate athletics as unifying factors among students, alumni, and friends of the University.

8. To provide a laboratory for professional courses in physical education which will assist in preparing prospective leaders, coaches, supervisors, and directors of recreation, athletics, and physical education in colleges, high schools, and recreation centers.

9. To encourage the attainment of sound standards in the conduct of sports and athletic activities among universities, colleges, and high schools.

The University accomplishes these objectives in part by a sports and athletic program which includes the following elements:

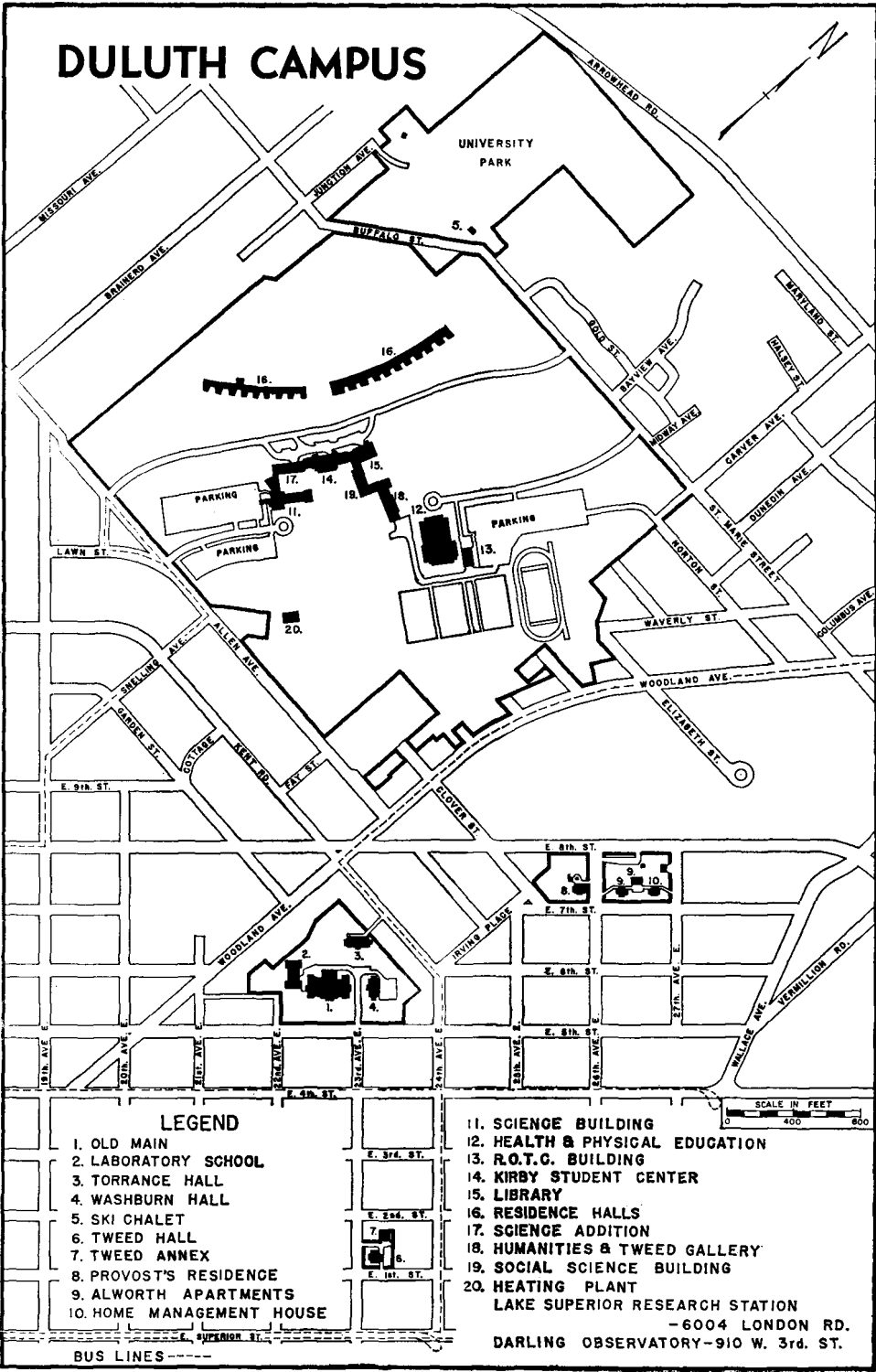
1. *Sports for Individuals and Small Groups*—Students, as individuals or as members of small groups, are invited and encouraged to engage in sports and games of their choice. A wide variety is offered: golf, swimming, handball, squash, tennis, archery, fencing, bowling, ice skating. Excellent facilities are close to both campuses.

2. *Intramural Sports*—Students are also invited and encouraged to participate in group or team sports. The intramural athletic program includes baseball, touchball, softball, basketball, golf, tennis, horseshoes, handball, ice hockey, squash, swimming, bowling, boxing, volleyball, archery, badminton, table tennis, wrestling, rifle shooting, fencing, and track and field events.

3. *Intercollegiate Athletics*—Men students who meet the rules of eligibility for competition in intercollegiate athletics, as set forth in the most recently revised *Handbook* of the Conference commonly known as the Big Ten or Western Conference, are invited and encouraged to report to the coach for a try-out in each intercollegiate sport in which they are interested.

The University of Minnesota was one of the founding members of the conference now known as the Big Ten or Western Conference. Only institutions having full and complete faculty control of intercollegiate athletics may hold memberships. This control relates to standards of eligibility, team schedules, ticket distribution, conference legislation, etc. In keeping with the basic principles of faculty control, the responsibility for intercollegiate athletic policies at Minnesota rests with the Senate Committee on Intercollegiate Athletics. This committee is made up of faculty, alumni, and students, with the faculty constituting a majority. Athletic department budgetmaking and control, and staff appointments, are handed directly upon recommendation to the president by the director of physical education and athletics in precise accord with the procedure of budget and appointment recommendations made by the deans of the various colleges to the president.

DULUTH CAMPUS



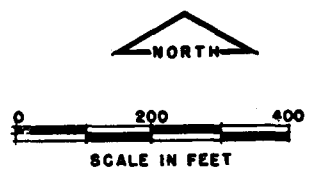
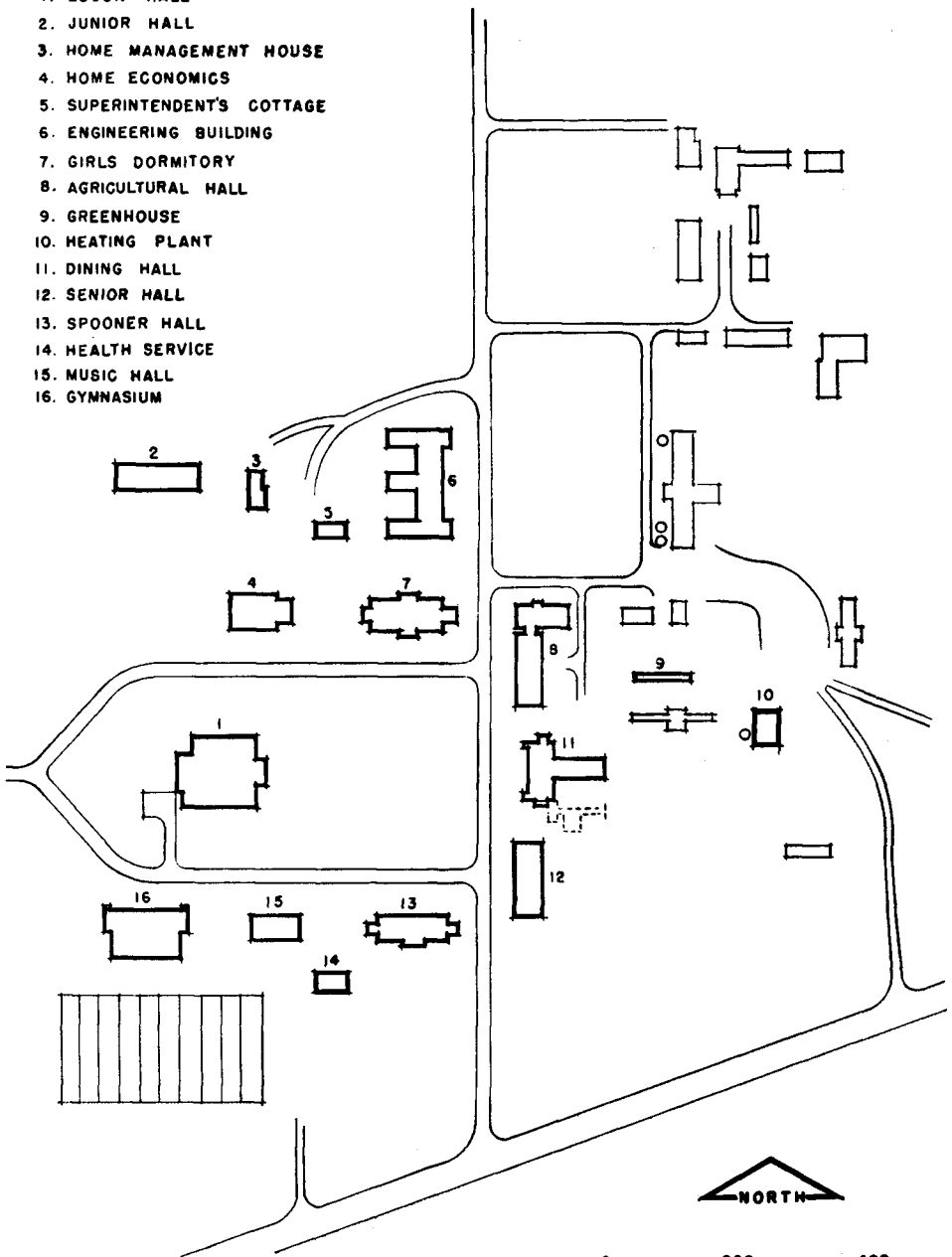
LEGEND

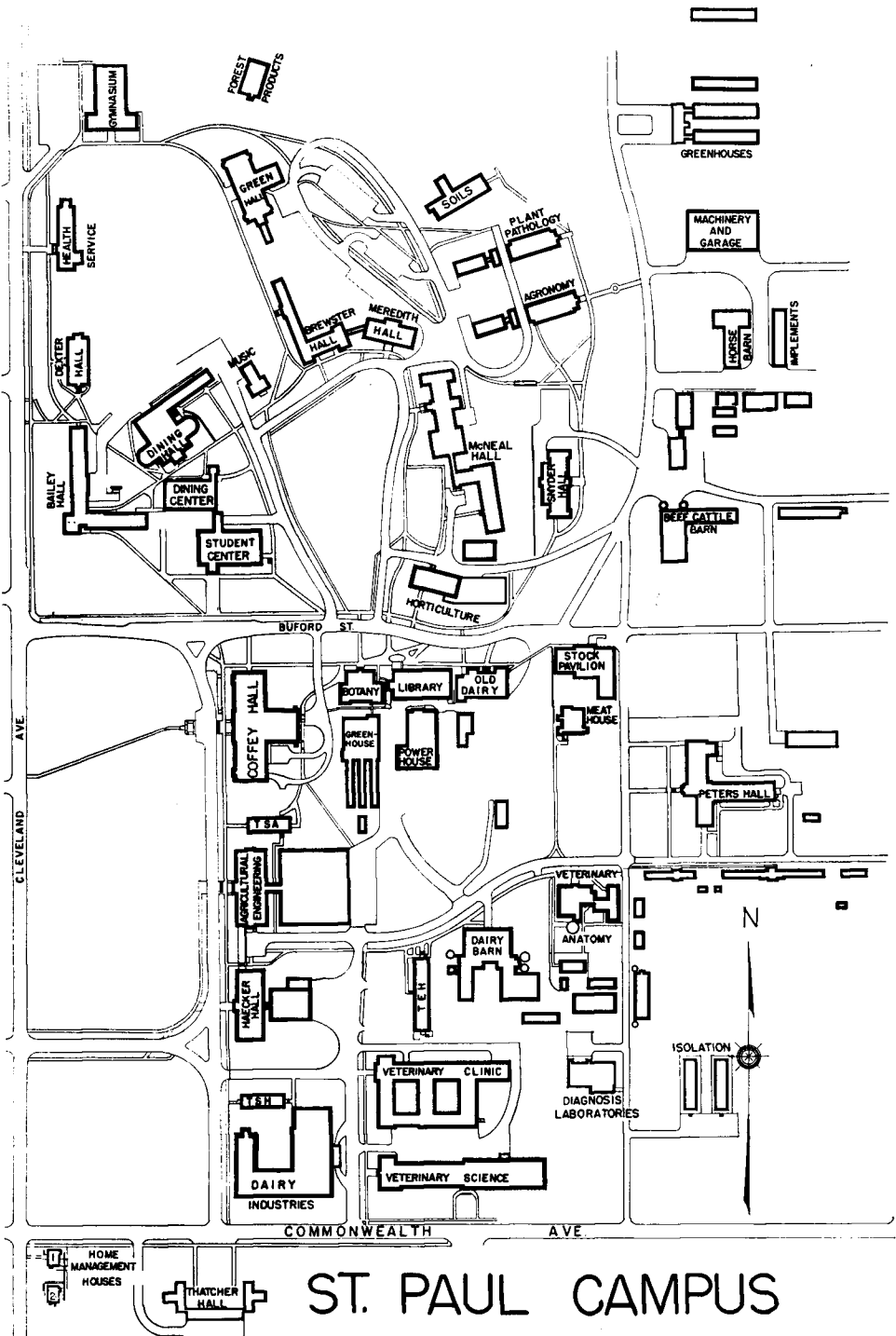
- 1. OLD MAIN
- 2. LABORATORY SCHOOL
- 3. TORRANCE HALL
- 4. WASHBURN HALL
- 5. SKI CHALET
- 6. TWEED HALL
- 7. TWEED ANNEX
- 8. PROVOST'S RESIDENCE
- 9. ALWORTH APARTMENTS
- 10. HOME MANAGEMENT HOUSE

- 11. SCIENCE BUILDING
 - 12. HEALTH & PHYSICAL EDUCATION
 - 13. R.O.T.C. BUILDING
 - 14. KIRBY STUDENT CENTER
 - 15. LIBRARY
 - 16. RESIDENCE HALLS
 - 17. SCIENCE ADDITION
 - 18. HUMANITIES & TWEED GALLERY
 - 19. SOCIAL SCIENCE BUILDING
 - 20. HEATING PLANT
- LAKE SUPERIOR RESEARCH STATION
-6004 LONDON RD.
DARLING OBSERVATORY-910 W. 3rd. ST.

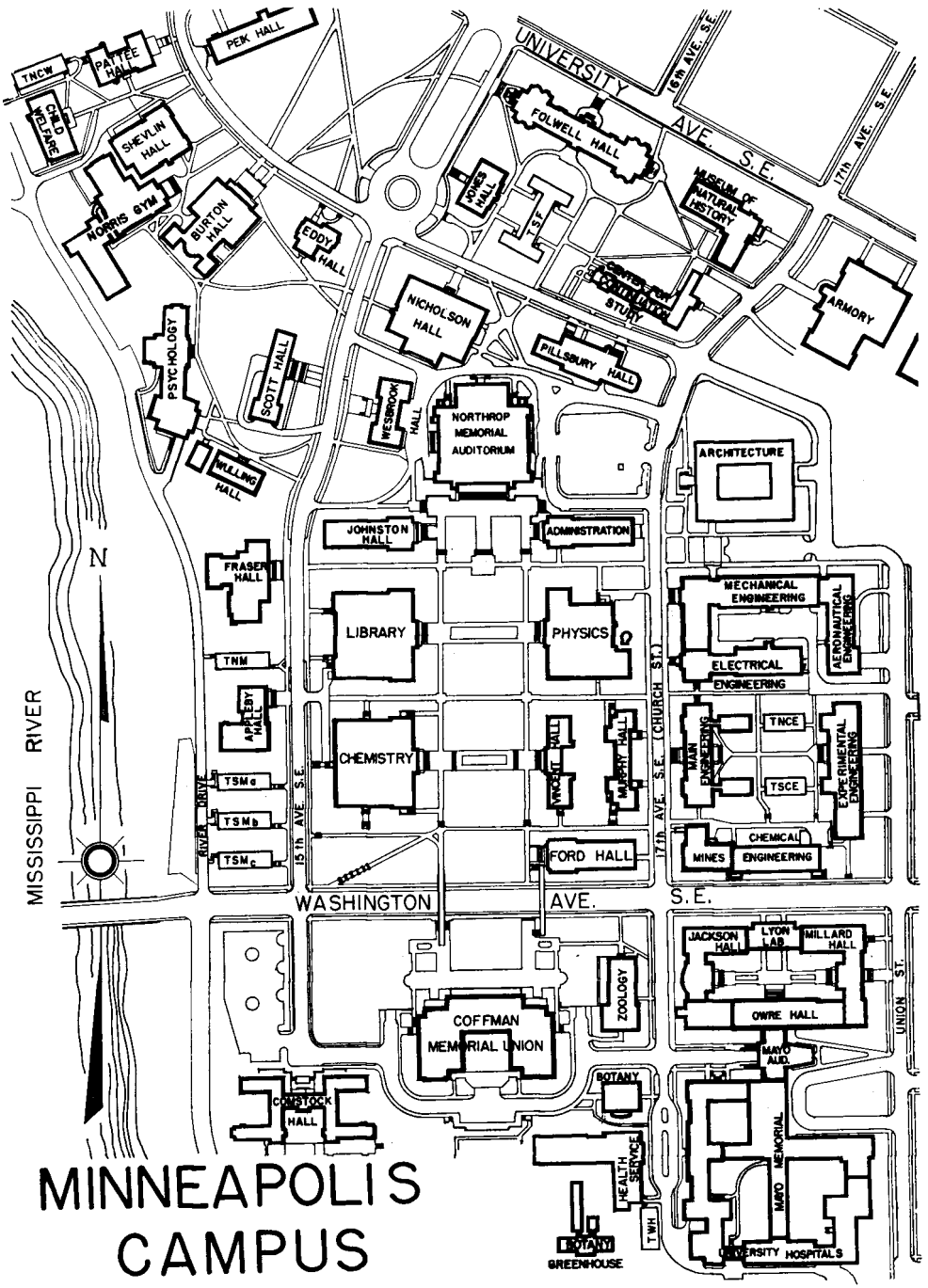
MORRIS CAMPUS

- 1. EDSON HALL
- 2. JUNIOR HALL
- 3. HOME MANAGEMENT HOUSE
- 4. HOME ECONOMICS
- 5. SUPERINTENDENT'S COTTAGE
- 6. ENGINEERING BUILDING
- 7. GIRLS DORMITORY
- 8. AGRICULTURAL HALL
- 9. GREENHOUSE
- 10. HEATING PLANT
- 11. DINING HALL
- 12. SENIOR HALL
- 13. SPOONER HALL
- 14. HEALTH SERVICE
- 15. MUSIC HALL
- 16. GYMNASIUM





ST. PAUL CAMPUS



MINNEAPOLIS CAMPUS