

DRILLING LOG

HOLE NO. 00100

Page 1 of 1

Property: UMore Park Property

Location: City of Rosemount & Empire Township, Dakota County, Minnesota

UTM Zone 15/NAD83/NAVD88

492,299.98 mE +/- 0.02 m 4,950,120.15 mN +/- 0.02 m

Elevation (ft.): 945.4 +/- 0.1 ft.

Ground Water Depth (ft.): Ground water not encountered

Ground Water Elevation (ft.):

Site: Edge of field road at natural grade.

Drilling Method: 9-inch flight auger

Started: 10/22/07 3:05 PM

Drilling Contractor: Braun Intertec

Completed: 10/22/07 4:35 PM

Drill Rig: CME-750

Logged By: J.D. Lehr

		DRILLING & SAMPLING					TEST RESULTS (%)					Geologic Interpretation	Economic Classification
Graphic Log	Depth (ft.)	Gravel Per Drill Action	Sample Runs	Sampled Intervals	Total + #4 Sieve	+ 1.5 Inch	1.5 Inch to 3/4 Inch	3/4 Inch to #4 Sieve	Sample Wt. (lbs)				
1.5	TOPSOIL. Silty, black.	943.9										Loess	
3.0	SILT. Brown.	942.4											
5.0	SAND. Fine sand, slightly dirty. Very minor gravel to 1-1/4 inches.	940.4											
10.0	SAND. Fine to coarse sand. Minor gravel to 1 inch.	935.4											
15.0	SAND. Fine to coarse sand. Minor gravel to 1-1/2 inches.	930.4											
20.0	SAND. Fine to coarse sand. Minor gravel to 1 inch.	925.4											
25.0	SAND. Fine to coarse sand. Minor gravel to 3 inches.	920.4											
30.0	SAND & GRAVEL. Fine to coarse sand. Gravel to 3 inches.												
35.0	SAND & GRAVEL. Fine to coarse sand. Gravel to 4 inches.	910.4											
40.0	SAND & GRAVEL. Fine to coarse sand. Gravel to 4 inches.	905.4											
44.0	SAND & GRAVEL. Fine to medium sand, very dirty. Gravel to 2-1/2 inches. Very rocky (drill action) from 41 to 44 feet.	901.4											
45.0	SILT. Brown. Gradational with above.	900.4											
40 to 44 foot interval not sampled - too dirty.													
	T.D. 45 ft.											Lacustrine sediment	

LOG A GNIN08 UMORE PARK DRILLING LOGS.GPJ LOG A GNIN08.GDT Printed 5/30/08

DRILLING LOG

HOLE NO. O0300

Page 1 of 1

Property: UMore Park Property

Location: City of Rosemount & Empire Township, Dakota County, Minnesota

UTM Zone 15/NAD83/NAVD88

492,298.31 mE +/- 0.02 m 4,950,335.38 mN +/- 0.02 m

Elevation (ft.): 945.1 +/- 0.1 ft.

Ground Water Depth (ft.): 60.0

Ground Water Elevation (ft.): 885.1

Site: Edge of field road at natural grade.

Drilling Method: 9-inch flight auger

Started: 10/22/07 1:00 PM

Drilling Contractor: Braun Intertec

Completed: 10/22/07 2:55 PM

Drill Rig: CME-750

Logged By: J.D. Lehr

DRILLING & SAMPLING

TEST RESULTS (%)

Geologic Interpretation
Economic Classification

Graphic Log	Depth (ft.)	Gravel Per Drill Action	Sample Runs	Sampled Intervals	Total + #4 Sieve	+ 1.5 Inch	1.5 Inch to 3/4 Inch	3/4 Inch to #4 Sieve	Sample Wt. (lbs)	Geologic Interpretation	Economic Classification
2.0 TOPSOIL. Silty, black.	943.1									Loess	
4.0 SILT. Brown.	941.1										
5.0 SAND & GRAVEL. Fine to coarse sand, dirty. Gravel to 2 inches.	940.1									Superior lobe outwash	17.9 % + #4
SAND. Fine to coarse sand. Minor gravel to 2 inches.					24.6	3.9	6.1	14.5	35.8		
15.0	930.1				21.4	2.1	8.5	10.8	22.5		
SAND. Fine to coarse sand. Very minor gravel to 1 inch.					13.6	0.0	2.2	11.4	23.9		
20.0	925.1				7.0	0.0	0.8	6.2	24.0		
SAND. Fine sand. Very minor gravel to 1 inch.					22.9	0.9	5.5	16.6	30.4		
25.0	920.1				20.2	0.0	1.8	18.3	29.6		
SAND. Fine to coarse sand. Minor gravel to 1-3/4 inches.					15.9	0.9	0.5	14.5	22.7		
30.0	915.1				16.4	0.0	0.6	15.8	30.3		
SAND. Fine to coarse sand. Minor gravel to 1 inch.											
40.0	905.1										
SAND. Fine to coarse sand. Minor gravel to 1 inch, mostly pea gravel.											
45.0	900.1										
SAND. Fine to medium sand. Very minor trace gravel to 3/4 inch.											
60.0	885.1										
SAND. Fine to coarse sand. Very minor gravel to 1 inch.											
65.0	880.1										
	T.D. 65 ft.										

LOG A GNIN08 UMORE PARK DRILLING LOGS.GPJ LOG A GNIN08.GDT Printed 5/30/08

DRILLING LOG

HOLE NO. 00450

Page 1 of 2

Property: UMore Park Property

Location: City of Rosemount & Empire Township, Dakota County, Minnesota

UTM Zone 15/NAD83/NAVD88
 492,325.66 mE +/- 0.02 m 4,950,453.61 mN +/- 0.02 m
 Elevation (ft.): 944.7 +/- 0.1 ft.
 Ground Water Depth (ft.): 58.0
 Ground Water Elevation (ft.): 886.7
 Site: Edge of Station Trail approximately 3 feet above natural grade.

Drilling Method: 4x6 Rotasonic Started: 4/23/08 12:30 PM
 Drilling Contractor: Traut Wells Completed: 4/23/08 3:15 PM
 Drill Rig: Versasonic Logged By: J.D. Lehr

		DRILLING & SAMPLING					TEST RESULTS (%)					Geologic Interpretation	Economic Classification
Graphic Log	Depth (ft.)	Gravel Per Drill Action	Sample Runs	Sampled Intervals	Total + #4 Sieve	+ 1.5 Inch	1.5 Inch to 3/4 Inch	3/4 Inch to #4 Sieve	Sample Wt. (lbs)				
1.0	FILL. Sandy, gravelly, silty. 943.7										Fill		
5.0	GRAVEL & SAND. Fine to coarse sand, slightly dirty from 1 to 3 feet. Gravel to 4 inches. 939.7				40.1	12.1	11.5	16.5	28.8		Superior lobe outwash	19.2% + #4	
10.0	SAND. Fine to very coarse sand. Minor gravel to 2-1/2 inches. 934.7				22.7	4.0	5.4	13.2	40.2				
15.0	SAND. Fine to medium sand, slightly dirty. Minor gravel to 1-1/2 inches. 929.7				17.5	0.6	2.6	14.4	49.2				
20.0	SAND. Fine to medium sand. Very minor gravel to 2 inches. 924.7												
30.0					10.8	1.9	2.6	6.3	29.8				
40.0	SAND & GRAVEL. Medium to very coarse sand, slightly dirty. Gravel to 1-1/2 inches. 904.7				26.3	0.0	10.8	15.5	30.6				
45.0	SAND & GRAVEL. Medium to very coarse sand, slightly dirty. Gravel to 3-1/2 inches. 899.7				31.6	8.6	7.1	15.9	42.1				
50.0	SAND. Fine to medium sand. Very minor gravel to 1-1/4 inches. 897.2												
55.0	SAND. Fine to medium sand. Very minor gravel to 1-1/4 inches. 889.7				8.1	0.6	1.8	5.6	37.5				
60.0	SAND. Fine to coarse sand. Very minor gravel to 1-1/4 inches. 884.7												
65.0	SAND. Fine to medium sand. Very minor gravel to 1-1/4 inches. 879.7				6.3	0.0	2.1	4.1	26.1				
70.0	SAND & GRAVEL. Fine to very coarse sand. Gravel to 3-1/2 inches. 874.7				39.9	17.3	5.9	16.7	44.9				
75.0	GRAVEL & SAND. Medium to very coarse sand. Gravel to 2-1/2 inches. 869.7				58.7	13.1	14.1	31.5	34.0				

Continued Next Page

LOG A GNNIN08 UMORE PARK DRILLING LOGS.GPJ LOG A GNNIN08.GDT Printed 5/30/08

DRILLING LOG

HOLE NO. 00450

Page 2 of 2

Property: UMore Park Property

Location: City of Rosemount & Empire Township, Dakota County, Minnesota

UTM Zone 15/NAD83/NAVD88
 492,325.66 mE +/- 0.02 m 4,950,453.61 mN +/- 0.02 m
 Elevation (ft.): 944.7 +/- 0.1 ft.
 Ground Water Depth (ft.): 58.0
 Ground Water Elevation (ft.): 886.7
 Site: Edge of Station Trail approximately 3 feet above natural grade.

Drilling Method: 4x6 Rotasonic Started: 4/23/08 12:30 PM
 Drilling Contractor: Traut Wells Completed: 4/23/08 3:15 PM
 Drill Rig: Versasonic Logged By: J.D. Lehr

		DRILLING & SAMPLING					TEST RESULTS (%)				Geologic Interpretation	Economic Classification
Graphic Log	Depth (ft.)	Gravel Per Drill Action	Sample Runs	Sampled Intervals	Total + #4 Sieve	+ 1.5 Inch	1.5 Inch to 3/4 Inch	3/4 Inch to #4 Sieve	Sample Wt. (lbs)			
77.0	GRAVEL & SAND. Medium to very coarse sand. Gravel to 2 inches.					21.4	2.1	3.1	16.2	37.6	Prairie du Chein	
	SAND. Fine to medium sand. Very minor trace gravel to 1/2 inch.											
867.7												
					1.4	0.0	0.0	1.4	35.5			
95.0												
849.7												
	SAND. Fine to very coarse sand. Minor gravel to 2 inches.				22.9	4.1	3.2	15.7	45.4			
100.0												
844.7												
	SAND. Fine to coarse sand. Very minor pea gravel.				8.2	0.0	1.0	7.2	42.9			
105.0												
839.7												
	SAND & GRAVEL. Fine to very coarse sand. Gravel to 1-1/2 inches.				30.2	1.3	8.2	20.7	43.4			
110.0												
834.7												
	SAND. Coarse to very coarse sand. Minor gravel to 1-1/2 inches.				23.8	0.6	4.1	19.0	36.2			
114.5												
830.2												
	ROCK. St. Peter Sandstone boulder. Not included in samples.											
115.5												
829.2												
	SAND. Coarse to very coarse sand. Minor gravel to 1-1/2 inches.				21.6	1.7	3.3	16.6	39.3			
120.0												
824.7												
	SAND & GRAVEL. Fine to very coarse sand. Gravel to 1-3/4 inches.				28.1	3.0	8.3	16.8	47.6			
127.0												
817.7												
	SAND. Fine sand. No gravel.											
128.0												
816.7												
	WEATHERED LIMESTONE. Refusal at 130 feet.											
130.0												
814.7												
	T.D. 130 ft.											

Ground water level approximate.

LOG A GNNIN08 UMORE PARK DRILLING LOGS.GPJ LOG A GNNIN08.GDT Printed 5/30/08

DRILLING LOG

HOLE NO. O0500

Page 1 of 1

Property: UMore Park Property

Location: City of Rosemount & Empire Township, Dakota County, Minnesota

UTM Zone 15/NAD83/NAVD88
 492,300.27 mE +/- 0.02 m 4,950,503.28 mN +/- 0.02 m
 Elevation (ft.): 940.1 +/- 0.1 ft.
 Ground Water Depth (ft.): 57.0
 Ground Water Elevation (ft.): 883.1
 Site: Edge of Station Trail approximately 6 feet above natural grade.

Drilling Method: 9-inch flight auger Started: 10/22/07 10:25 AM
 Drilling Contractor: Braun Intertec Completed: 10/22/07 12:30 PM
 Drill Rig: CME-750 Logged By: J.D. Lehr

Depth (ft.)	Graphic Log	Gravel Per Drill Action	Sample Runs	Sampled Intervals	TEST RESULTS (%)					Geologic Interpretation	Economic Classification	
					Total + #4 Sieve	+ 1.5 Inch	1.5 Inch to 3/4 Inch	3/4 Inch to #4 Sieve	Sample Wt. (lbs)			
5.0	FILL. Gravelly silt.										Fill	
12.0	SILT. Brown. Includes native silty topsoil.										Loess	
15.0	SAND. Fine to coarse sand. Minor gravel to 3 inches.				24.2	4.4	5.6	14.2	25.9		Superior lobe outwash	19.9% + #4
20.0	SAND. Fine to medium sand. Minor gravel to 1-1/2 inches. Higher percentage gravel indicated by drill action.				17.4	0.0	5.2	12.2	21.2			
25.0	SAND. Fine sand. No gravel.											
30.0	SAND. Fine to medium sand. Very minor trace gravel to 1-1/2 inches.											
40.0	SAND. Fine to medium sand. Very minor trace gravel to 1 inch.											
45.0	SAND. Fine to medium sand. No gravel.											
65.0	SAND. Fine to coarse sand. Very minor trace pea gravel.											
	T.D. 65 ft.											

Second attempt at this location.

LOG A GNNIN08 UMORE PARK DRILLING LOGS.GPJ LOG A GNNIN08.GDT Printed 5/30/08

DRILLING LOG

HOLE NO. O0500A

Page 1 of 1

Property: UMore Park Property

Location: City of Rosemount & Empire Township, Dakota County, Minnesota

UTM Zone 15/NAD83/NAVD88

mE +/- m mN +/- m

Elevation (ft.): +/- ft.

Ground Water Depth (ft.): Ground water not encountered

Ground Water Elevation (ft.):

Site: Edge of Station Trail approximately 6 feet above natural grade.

Drilling Method: 9-inch flight auger Started: 10/19/07 10:35 AM

Drilling Contractor: Braun Intertec Completed: 10/19/07 11:10 AM

Drill Rig: CME-750

Logged By: J.D. Lehr

DRILLING & SAMPLING					TEST RESULTS (%)					Geologic Interpretation	Economic Classification
Graphic Log	Depth (ft.)	Gravel Per Drill Action	Sample Runs	Sampled Intervals	Total + #4 Sieve	+ 1.5 Inch	1.5 Inch to 3/4 Inch	3/4 Inch to #4 Sieve	Sample Wt. (lbs)		
<p>FILL. Very dirty sand with gravel.</p> <p>5.0 -5.0</p> <p>SILT. Brown. Includes possible truncated topsoil.</p> <p>9.0 -9.0</p> <p>SAND. Fine to medium sand, slightly dirty. Very minor gravel to 1 inch.</p> <p>14.0 -14.0</p> <p>SAND. Fine sand. Very minor trace gravel to 1 inch.</p> <p>17.0 -17.0</p> <p>T.D. 17 ft.</p>	5									Fill	
	5									Loess	
	10									Superior lobe outwash	
	15										
<p>No samples taken. Broke off auger at 17 feet. Recovered augers.</p>											

DRILLING LOG

HOLE NO. O0700

Page 1 of 1

Property: UMore Park Property

Location: City of Rosemount & Empire Township, Dakota County, Minnesota

UTM Zone 15/NAD83/NAVD88
 492,299.45 mE +/- 0.02 m 4,950,700.90 mN +/- 0.02 m
 Elevation (ft.): 944.9 +/- 0.1 ft.
 Ground Water Depth (ft.): 61.0
 Ground Water Elevation (ft.): 883.9
 Site: Soybean stubble field at natural grade.

Drilling Method: 9-inch flight auger Started: 10/23/07 1:45 PM
 Drilling Contractor: Braun Intertec Completed: 10/23/07 3:20 PM
 Drill Rig: CME-750 Logged By: J.D. Lehr

		DRILLING & SAMPLING				TEST RESULTS (%)				Geologic Interpretation	Economic Classification
Graphic Log	Depth (ft.)	Gravel Per Drill Action	Sample Runs	Sampled Intervals	Total + #4 Sieve	+ 1.5 Inch	1.5 Inch to 3/4 Inch	3/4 Inch to #4 Sieve	Sample Wt. (lbs)		
1.5	TOPSOIL. Silty, black.									Loess	
3.0	SILT. Brown.										
5.0	SAND. Fine to medium sand, dirty. Very minor gravel to 1 inch.									Superior lobe outwash	13.0 % + #4
10.0	SAND. Fine to coarse sand. Minor gravel to 3/4 inch.				14.8	0.0	2.0	12.9	34.5		
15.0	SAND. Fine to medium sand. Very minor gravel to 3 inches.				14.7	4.0	1.0	9.7	21.6		
20.0	SAND. Fine to medium sand. Very minor trace gravel to 1 inch.				4.7	0.0	1.5	3.2	18.5		
25.0	SAND. Fine to coarse sand. Minor gravel to 1-3/4 inches.				6.2	0.0	0.7	5.6	25.9		
30.0	SAND. Fine to coarse sand. Minor gravel to 4 inches, mostly less than 1-1/2 inches.				15.8	1.1	3.7	11.1	22.5		
35.0	SAND. Fine sand. No gravel.				21.4	7.7	4.0	9.7	24.8		
45.0	SAND. Fine to coarse sand. Very minor gravel to 1-3/4 inches.										
50.0	SAND. Fine to coarse sand. Minor gravel to 1 inch.										
60.0	SAND. Fine to coarse sand. Very minor trace gravel to 3/4 inch.										
65.0	T.D. 65 ft.										

LOG A GNIN08 UMORE PARK DRILLING LOGS.GPJ LOG A GNIN08.GDT Printed 5/30/08

DRILLING LOG

HOLE NO. O0800

Page 1 of 1

Property: UMore Park Property

Location: City of Rosemount & Empire Township, Dakota County, Minnesota

UTM Zone 15/NAD83/NAVD88

492,299.85 mE +/- 0.02 m 4,950,799.02 mN +/- 0.02 m

Elevation (ft.): 947.4 +/- 0.1 ft.

Ground Water Depth (ft.): 63.0

Ground Water Elevation (ft.): 884.4

Site: Snow covered soybean stubble field at natural grade.

Drilling Method: 9-inch flight auger

Started: 2/25/08 8:05 AM

Drilling Contractor: Braun Intertec

Completed: 2/25/08 9:30 AM

Drill Rig: CME-750

Logged By: J.D. Lehr

DRILLING & SAMPLING

TEST RESULTS (%)

Geologic Interpretation
Economic Classification

Graphic Log	Depth (ft.)	Gravel Per Drill Action	Sample Runs	Sampled Intervals	Total + #4 Sieve	+ 1.5 Inch	1.5 Inch to 3/4 Inch	3/4 Inch to #4 Sieve	Sample Wt. (lbs)	Geologic Interpretation	Economic Classification
2.0 TOPSOIL. Silty, black.	945.4									Loess	
3.0 SILT. Brown.	944.4										
5.0 SAND & GRAVEL. Fine to coarse sand, slightly dirty. Gravel to 2-1/2 inches. Very rocky (drill action) from 3 to 5 feet.	942.4										
10.0 SAND. Fine to coarse sand. Minor gravel to 1 inch.	937.4				22.1	5.9	6.8	9.4	36.9		
15.0 SAND. Fine to medium sand. Minor gravel to 1-1/4 inches.	932.4										
20.0 SAND. Fine to medium sand. Very minor trace gravel to 1-3/4 inches.	927.4				11.2	5.4	1.5	4.3	29.3		
25.0 SAND. Fine to medium sand. Very minor gravel to 3-1/2 inches.	922.4										
SAND. Fine to very coarse sand. Minor gravel to 2 inches.					20.4	2.4	6.0	12.0	25.9		
					22.6	2.1	5.1	15.4	27.1		
					24.4	5.1	6.5	12.7	33.3	Superior lobe outwash	21.9 % + #4
40.0 SAND. Fine to coarse sand. Minor gravel to 3 inches.	907.4				24.2	10.5	4.2	9.5	30.3		
45.0 SAND & GRAVEL. Fine to coarse sand. Gravel to 1-3/4 inches.	902.4				27.0	5.5	6.2	15.4	30.9		
50.0 SAND & GRAVEL. Fine to very coarse sand. Gravel to 3-1/2 inches.	897.4				30.1	10.0	4.5	15.6	27.0		
55.0 SAND. Fine to coarse sand. Minor gravel to 2 inches.	892.4				23.4	2.9	2.4	18.1	20.2		
60.0 SAND. Fine to very coarse sand. Minor gravel to 2 inches.	887.4				23.4	3.0	3.7	16.7	24.3		
65.0 T.D. 65 ft.	882.4										

LOG A GNNIN08 UMORE PARK DRILLING LOGS.GPJ LOG A GNNIN08.GDT Printed 5/30/08

DRILLING LOG

HOLE NO. 00900

Page 1 of 1

Property: UMore Park Property

Location: City of Rosemount & Empire Township, Dakota County, Minnesota

UTM Zone 15/NAD83/NAVD88
 492,299.98 mE +/- 0.02 m 4,950,899.94 mN +/- 0.02 m
 Elevation (ft.): 937.1 +/- 0.1 ft.
 Ground Water Depth (ft.): 53.0
 Ground Water Elevation (ft.): 884.1
 Site: Soybean stubble field at natural grade.

Drilling Method: 9-inch flight auger Started: 10/23/07 3:25 PM
 Drilling Contractor: Braun Intertec Completed: 10/23/07 5:00 PM
 Drill Rig: CME-750 Logged By: J.D. Lehr

		DRILLING & SAMPLING				TEST RESULTS (%)					Geologic Interpretation	Economic Classification
Graphic Log	Depth (ft.)	Gravel Per Drill Action	Sample Runs	Sampled Intervals	Total + #4 Sieve	+ 1.5 Inch	1.5 Inch to 3/4 Inch	3/4 Inch to #4 Sieve	Sample Wt. (lbs)			
TOPSOIL. Silty, black.	934.1										Loess	
3.0												
SILT. Brown.	932.1										Superior lobe outwash	21.0 % + #4
5.0												
SAND. Fine to medium sand. Very minor gravel to 1 inch.	927.1				9.1	0.0	2.5	6.6	17.4			
10.0												
SAND. Fine to medium sand. Very minor gravel to 1-1/2 inches.	922.1				8.9	0.0	3.2	5.7	25.0			
15.0												
SAND. Fine to medium sand. Very minor trace gravel to 1 inch.	917.1				4.8	0.0	1.0	3.8	24.9			
20.0												
SAND. Fine to coarse sand. Very minor gravel to 1 inch.	912.1				7.0	0.0	1.6	5.4	27.2			
25.0												
SAND. Fine to coarse sand. Minor gravel to 1-1/2 inches.	907.1				23.0	1.2	7.5	14.3	22.3			
30.0												
SAND. Fine to coarse sand. Minor gravel to 1-1/4 inches.	897.1				22.5	0.0	7.1	15.4	21.0			
40.0												
SAND & GRAVEL. Fine to coarse sand. Gravel to 5 inches.	887.1				20.4	0.0	4.8	15.5	27.6			
50.0												
SAND. Fine to very coarse sand. Minor gravel to 1-1/2 inches.	882.1				37.3	13.8	6.7	16.9	29.8			
55.0												
SAND & GRAVEL. Fine to very coarse sand. Gravel to 1-1/2 inches.	872.1				37.4	9.6	5.4	22.4	28.7			
65.0												
SAND. Fine to very coarse sand. Minor gravel to 1-1/2 inches.	882.1				24.4	0.0	3.7	20.6	17.2			
55.0												
SAND & GRAVEL. Fine to very coarse sand. Gravel to 1-1/2 inches.	872.1				26.2	0.0	2.4	23.8	22.7			
65.0												
	872.1				31.1	0.0	6.4	24.7	24.9			
	T.D. 65 ft.											

LOG A GNNIN08 UMORE PARK DRILLING LOGS.GPJ LOG A GNNIN08.GDT Printed 5/30/08

DRILLING LOG

HOLE NO. O1000

Page 1 of 2

Property: UMore Park Property

Location: City of Rosemount & Empire Township, Dakota County, Minnesota

UTM Zone 15/NAD83/NAVD88
 492,304.12 mE +/- 0.02 m 4,950,997.97 mN +/- 0.02 m
 Elevation (ft.): 944.4 +/- 0.1 ft.
 Ground Water Depth (ft.): Ground water level uncertain
 Ground Water Elevation (ft.):
 Site: Field approach at approximately natural grade.

Drilling Method: 4x6 Rotasonic Started: 1/17/08 9:10 AM
 Drilling Contractor: Traut Wells Completed: 1/17/08 2:10 PM
 Drill Rig: Versasonic Logged By: J.D. Lehr

DRILLING & SAMPLING					TEST RESULTS (%)					Geologic Interpretation	Economic Classification
Graphic Log	Depth (ft.)	Gravel Per Drill Action	Sample Runs	Sampled Intervals	Total + #4 Sieve	+ 1.5 Inch	1.5 Inch to 3/4 Inch	3/4 Inch to #4 Sieve	Sample Wt. (lbs)		

2.0	TOPSOIL. Silty, black.	942.4								Loess
4.0	SILT. Brown.	940.4								
10.0	SAND. Fine to coarse sand. Minor gravel to 4 inches.	934.4			22.7	7.9	4.8	10.0	46.5	Superior lobe outwash 20.1 % + #4
20.0	SAND. Fine to coarse sand. Very minor gravel to 1-3/4 inches.	924.4			11.4	0.7	2.1	8.6	57.3	
30.0	SAND. Fine to medium sand. Minor gravel to 2 inches.	914.4			17.7	3.8	3.2	10.7	32.0	
40.0	SAND. Fine to medium sand. Very minor gravel to 2 inches. Lower part of sample (2 feet according to driller) fell out of core barrel while tripping out.	904.4			6.6	1.4	1.6	3.6	41.2	
48.0	SAND. Fine to coarse sand, slightly dirty. No gravel.	896.4			14.6	1.6	2.7	10.3	47.0	
52.0	SAND. Fine to coarse sand, dirty. Minor gravel to 1-1/2 inches.	892.4			4.9	0.0	0.8	4.1	41.3	
60.0	SAND. Fine to medium sand. Very minor trace gravel to 1/2 inch.	884.4			40.9	4.1	6.6	30.1	45.3	
62.0	GRAVEL & SAND. Medium to very coarse sand. Gravel to 1-1/4 inches.	882.4			51.4	11.4	11.0	29.1	44.9	
67.0	SAND & GRAVEL. Fine to very coarse sand. Gravel to 3-1/2 inches.	877.4			45.0	9.0	8.4	27.6	55.0	
70.0	GRAVEL & SAND. Fine to coarse sand, dirty. Gravel to 4 inches. Silty, sandy till balls present.	874.4								
72.0	GRAVEL & SAND. Medium to very	872.4								

Continued Next Page

LOG A GNNIN08 UMORE PARK DRILLING LOGS.GPJ LOG A GNNIN08.GDT Printed 5/30/08

DRILLING LOG

HOLE NO. O1000

Page 2 of 2

Property: UMore Park Property

Location: City of Rosemount & Empire Township, Dakota County, Minnesota

UTM Zone 15/NAD83/NAVD88
 492,304.12 mE +/- 0.02 m 4,950,997.97 mN +/- 0.02 m
 Elevation (ft.): 944.4 +/- 0.1 ft.
 Ground Water Depth (ft.): Ground water level uncertain
 Ground Water Elevation (ft.):
 Site: Field approach at approximately natural grade.

Drilling Method: 4x6 Rotasonic Started: 1/17/08 9:10 AM
 Drilling Contractor: Traut Wells Completed: 1/17/08 2:10 PM
 Drill Rig: Versasonic Logged By: J.D. Lehr

		DRILLING & SAMPLING					TEST RESULTS (%)				Geologic Interpretation	Economic Classification
Graphic Log	Depth (ft.)	Gravel Per Drill Action	Sample Runs	Sampled Intervals	Total + #4 Sieve	+ 1.5 Inch	1.5 Inch to 3/4 Inch	3/4 Inch to #4 Sieve	Sample Wt. (lbs)			
76.0 coarse sand. Gravel to 1-1/2 inches.	868.4											
78.0 SAND & GRAVEL. Fine to medium sand. Gravel to 4 inches. (continued)	866.4					38.5	1.9	4.2	32.4	40.4		
GRAVEL & SAND. Medium to very coarse sand. Gravel to 3/4 inch.	84.0 860.4											
85.0 SAND. Fine to coarse sand. Very minor trace gravel to 1-1/4 inches.	859.4											
88.5 SAND & GRAVEL. Fine to medium sand, very dirty. Gravel to 2-1/2 inches. Large clay balls present.	855.9											
89.5 SAND. Fine to coarse sand. No gravel.	854.9											
GRAVEL & SAND. Fine to coarse sand. Gravel to 4+ inches.												
100.0 TILL. Clayey, reddish brown to gray, hard. Lens of sand & gravel with till from 96 to 98 feet.	844.4										Till	
Field sample photographs for 0 to 10 foot intervals incorrectly labeled H1550.												
	T.D. 100 ft.											

LOG A GNIN08 UMORE PARK DRILLING LOGS.GPJ LOG A GNIN08.GDT Printed 5/30/08

DRILLING LOG

HOLE NO. O1100

Page 1 of 1

Property: UMore Park Property

Location: City of Rosemount & Empire Township, Dakota County County, Minnesota

UTM Zone 15/NAD83/NAVD88

492,415.18 mE +/- 0.02 m 4,951,099.93 mN +/- 0.02 m

Elevation (ft.): 944.4 +/- 0.1 ft.

Ground Water Depth (ft.): Ground water not encountered

Ground Water Elevation (ft.):

Site: Edge of soybean field at natural grade.

Drilling Method: 9-inch flight auger

Started: 10/18/07 1:05 PM

Drilling Contractor: Braun Intertec

Completed: 10/19/07 9:25 AM

Drill Rig: CME-750

Logged By: J.D. Lehr

DRILLING & SAMPLING

TEST RESULTS (%)

Geologic Interpretation
Economic Classification

Graphic Log	Depth (ft.)	Gravel Per Drill Action	Sample Runs	Sampled Intervals	Total + #4 Sieve	+ 1.5 Inch	1.5 Inch to 3/4 Inch	3/4 Inch to #4 Sieve	Sample Wt. (lbs)	Geologic Interpretation	Economic Classification
2.0 TOPSOIL. Silty, black.	942.4									Loess	
4.5 SILT. Brown.	939.9										
SAND & GRAVEL. Fine to coarse sand. Gravel to 2 inches.	10.0 934.4				25.3	1.7	2.2	21.4	25.7	Superior lobe outwash	19.1 % + #4
SAND. Fine to medium sand. Very minor gravel to 1-1/2 inches.	15.0 929.4				6.4	0.0	1.8	4.5	15.9		
SAND. Fine to coarse sand. Very minor gravel to 1 inch.	20.0 924.4				8.1	0.0	1.9	6.1	23.0		
SAND. Fine sand. Very minor gravel to 3/4 inch.	25.0 919.4				7.5	0.0	1.2	6.2	19.7		
SAND. Fine to medium sand. Very minor gravel to 1-1/2 inches.	35.0 909.4				10.2	0.0	2.0	8.1	28.5		
SAND. Fine to coarse sand. Minor gravel to 1-1/2 inches.	45.0 899.4				10.1	0.0	1.7	8.5	16.9		
SAND & GRAVEL. Fine to coarse sand. Gravel to 3 inches.	50.0 894.4				16.5	3.2	1.0	12.2	28.7		
SAND & GRAVEL. Fine to coarse sand. Gravel to 1-1/2 inches.	60.0 884.4				18.0	0.0	3.8	14.2	22.1		
SAND & GRAVEL. Fine to coarse sand. Gravel to 1-1/2 inches.	65.0 879.4				38.9	10.0	4.4	24.5	23.7		
SAND & GRAVEL. Fine to coarse sand. Gravel to 1-1/2 inches.					31.9	0.0	1.7	30.2	15.3		
SAND. Fine to coarse sand. Minor gravel to 1-1/2 inches.					32.0	0.0	4.3	27.7	26.6		
SAND. Fine to coarse sand. Minor gravel to 1-1/2 inches.					24.1	0.0	2.5	21.6	20.2		
T.D. 65 ft.											

LOG A GNINN08 UMORE PARK DRILLING LOGS.GPJ LOG A GNINN08.GDT Printed 5/30/08

DRILLING LOG

HOLE NO. O1300

Page 1 of 1

Property: UMore Park Property

Location: City of Rosemount & Empire Township, Dakota County, Minnesota

UTM Zone 15/NAD83/NAVD88

492,410.00 mE +/- 0.02 m 4,951,304.55 mN +/- 0.02 m

Elevation (ft.): 948.1 +/- 0.1 ft.

Ground Water Depth (ft.): Ground water not encountered

Ground Water Elevation (ft.):

Site: Edge of field at natural grade.

Drilling Method: 9-inch flight auger

Started: 10/18/07 9:30 AM

Drilling Contractor: Braun Intertec

Completed: 10/18/07 12:20 PM

Drill Rig: CME-750

Logged By: J.D. Lehr

DRILLING & SAMPLING

TEST RESULTS (%)

Geologic Interpretation
Economic Classification

Graphic Log	Depth (ft.)	Gravel Per Drill Action	Sample Runs	Sampled Intervals	Total + #4 Sieve	+ 1.5 Inch	1.5 Inch to 3/4 Inch	3/4 Inch to #4 Sieve	Sample Wt. (lbs)	Geologic Interpretation	Economic Classification
3.0	945.1									Loess	
4.5	943.6										
TOPSOIL. Silty, black.											
SILT. Brown.											
SAND. Fine to coarse sand. Very minor gravel to 1-1/4 inches.	10.0				14.5	0.0	3.7	10.8	18.8	Superior lobe outwash	17.3% + #4
SAND. Fine to medium sand. Minor gravel to 2-1/4 inches.	15.0				15.8	4.3	4.5	7.0	24.4		
SAND. Fine to coarse sand. Very minor gravel to 1-1/4 inches.	20.0				9.5	0.0	1.6	7.9	23.1		
SAND. Fine to coarse sand. Minor gravel to 1-1/2 inches.	25.0				10.9	0.0	2.4	8.5	28.4		
SAND. Fine to coarse sand. Minor gravel to 1-1/2 inches.	30.0				23.4	1.8	7.7	13.8	25.3		
SAND & GRAVEL. Fine to coarse sand. Gravel to 1-1/2 inches.	35.0				25.1	0.9	9.9	14.2	27.1		
SAND. Medium to coarse sand. Minor gravel to 1 inch, mostly pea gravel.	40.0				22.4	0.0	2.1	20.4	25.8		
SAND. Fine to medium sand. Very minor gravel to 3/4 inch.	45.0										
SAND. Fine sand, dirty. Very minor gravel to 1 inch.	50.0										
SAND. Fine to medium sand, dirty. Very minor gravel to 2 inches. Higher percentage gravel indicated by drill action.	55.0										
TILL. Clayey, brown.	62.0										
	65.0									Till	

T.D. 65 ft.

40 to 45 feet clean, but low percentage gravel. 45 to 62 dirty and low percentage gravel in samples. No field sample photographs from 5 to 25 feet.

LOG A GNIN08 UMORE PARK DRILLING LOGS.GPJ LOG A GNIN08.GDT Printed 5/30/08

DRILLING LOG

HOLE NO. O1500

Page 1 of 1

Property: UMore Park Property

Location: City of Rosemount & Empire Township, Dakota County, Minnesota

UTM Zone 15/NAD83/NAVD88
 492,409.75 mE +/- 0.02 m 4,951,499.79 mN +/- 0.02 m
 Elevation (ft.): 947.0 +/- 0.1 ft.
 Ground Water Depth (ft.): Ground water not encountered
 Ground Water Elevation (ft.):
 Site: Edge of soybean field at natural grade.

Drilling Method: 9-inch flight auger Started: 10/17/07 9:55 AM
 Drilling Contractor: Braun Intertec Completed: 10/17/07 10:45 AM
 Drill Rig: CME-750 Logged By: J.D. Lehr

Depth (ft.)	Graphic Log	Gravel Per Drill Action	Sample Runs	Sampled Intervals	TEST RESULTS (%)					Geologic Interpretation	Economic Classification	
					Total + #4 Sieve	+ 1.5 Inch	1.5 Inch to 3/4 Inch	3/4 Inch to #4 Sieve	Sample Wt. (lbs)			
2.0	TOPSOIL. Silty, black.											
6.0	SILT. Brown. Lower contact based on drill action.									Loess		
9.0	SAND. Fine sand. Very minor gravel to 1 inch.					10.5	0.0	2.4	8.1	27.1	Superior lobe outwash	22.4% + #4
14.0	SAND. Fine to coarse sand. Minor gravel to 1-3/4 inches.					23.9	1.3	4.7	17.9	20.6		
19.0	SAND & GRAVEL. Fine to medium sand. Gravel to 2-1/2 inches.					27.9	6.9	7.7	13.3	15.8		
27.0	NO RECOVERY. Drilled like sand with some gravel.											
	T.D. 27 ft.											
Broke off lower 15 feet of augers at approximately 27 feet. Attempt to retrieve unsuccessful. Abandoned augers in hole.												

DRILLING LOG

HOLE NO. O1700

Page 1 of 1

Property: UMore Park Property

Location: City of Rosemount & Empire Township, Dakota County, Minnesota

UTM Zone 15/NAD83/NAVD88
 492,299.78 mE +/- 0.02 m 4,951,699.21 mN +/- 0.02 m
 Elevation (ft.): 948.1 +/- 0.1 ft.
 Ground Water Depth (ft.): Ground water not encountered
 Ground Water Elevation (ft.):
 Site: Snow covered clearing in woods, surface may be disturbed.

Drilling Method: 9-inch flight auger Started: 1/7/08 9:00 AM
 Drilling Contractor: Braun Intertec Completed: 1/7/08 9:35 AM
 Drill Rig: CME-750 Logged By: J.D. Lehr

Depth (ft.)	Gravel Per Drill Action	Sample Runs	Sampled Intervals	TEST RESULTS (%)					Geologic Interpretation	Economic Classification	
				Total + #4 Sieve	+ 1.5 Inch	1.5 Inch to 3/4 Inch	3/4 Inch to #4 Sieve	Sample Wt. (lbs)			
1.0										Loess	
5.0										Superior lobe outwash	26.5 % + #4
10.0					26.5	5.7	7.3	13.5	35.9		
15.0										Till	
T.D. 15 ft.											
Small sample volume from 5 to 10 feet.											

LOG A GNIN08 UMORE PARK DRILLING LOGS.GPJ LOG A GNIN08.GDT Printed 5/30/08

DRILLING LOG

HOLE NO. O1900

Page 1 of 1

Property: UMore Park Property

Location: City of Rosemount & Empire Township, Dakota County, Minnesota

UTM Zone 15/NAD83/NAVD88

492,238.46 mE +/- 0.02 m 4,951,845.65 mN +/- 0.02 m

Elevation (ft.): 949.8 +/- 0.1 ft.

Ground Water Depth (ft.): Ground water not encountered

Ground Water Elevation (ft.):

Site: In center of trail through woods at natural grade.

Drilling Method: 9-inch flight auger

Started: 1/7/08 8:15 AM

Drilling Contractor: Braun Intertec

Completed: 1/7/08 8:55 AM

Drill Rig: CME-750

Logged By: J.D. Lehr

DRILLING & SAMPLING

TEST RESULTS (%)

Geologic Interpretation
Economic Classification

Depth (ft.)	Graphic Log	Gravel Per Drill Action	Sample Runs	Sampled Intervals	Total + #4 Sieve	+ 1.5 Inch	1.5 Inch to 3/4 Inch	3/4 Inch to #4 Sieve	Sample Wt. (lbs)	Geologic Interpretation	Economic Classification
1.5										Fill	
2.5										Loess	
4.0										Superior lobe outwash	
5.0											
10.0											
15.0										Superior lobe outwash	
20.0											
25.0										Till	

T.D. 25 ft.
No samples taken. Estimated less than 10 percent gravel from 5 to 20 feet.

LOG A GNIN08 UMORE PARK DRILLING LOGS.GPJ LOG A GNIN08.GDT Printed 5/30/08

DRILLING LOG

HOLE NO. O2100

Page 1 of 1

Property: UMore Park Property

Location: City of Rosemount & Empire Township, Dakota County, Minnesota

UTM Zone 15/NAD83/NAVD88
 492,299.91 mE +/- 0.02 m 4,952,101.23 mN +/- 0.02 m
 Elevation (ft.): 947.6 +/- 0.1 ft.
 Ground Water Depth (ft.): Ground water not encountered
 Ground Water Elevation (ft.):
 Site: Snow covered field at natural grade.

Drilling Method: 9-inch flight auger Started: 1/4/08 2:10 PM
 Drilling Contractor: Braun Intertec Completed: 1/4/08 3:45 PM
 Drill Rig: CME-750 Logged By: J.D. Lehr

Depth (ft.)	Graphic Log	Gravel Per Drill Action	Sample Runs	Sampled Intervals	TEST RESULTS (%)					Geologic Interpretation	Economic Classification
					Total + #4 Sieve	+ 1.5 Inch	1.5 Inch to 3/4 Inch	3/4 Inch to #4 Sieve	Sample Wt. (lbs)		
1.0	TOPSOIL. Silty, black.									Loess	
4.0	SILT. Brown.										
5.0	SAND. Very fine sand, dirty. Very minor trace gravel to 1 inch.				26.8	0.0	5.5	21.3	35.2	Superior lobe outwash	19.8% + #4
10.0	SAND & GRAVEL. Fine to coarse sand. Gravel to 1 inch.				21.8	1.3	6.4	14.1	25.2		
15.0	SAND. Fine to coarse sand. Minor gravel to 1-1/2 inches.				8.5	0.0	1.6	6.8	25.0		
20.0	SAND. Fine to coarse sand. Very minor gravel to 1 inch.				22.0	12.2	2.2	7.7	25.7		
25.0	SAND. Fine to coarse sand. Minor gravel to 2-1/2 inches.										
29.0	NO RECOVERY. Samples displaced while drilling interval below. Similar to 20 to 25 foot interval based on drill action.									Superior lobe outwash	19.8% + #4
	SAND. Very fine to fine sand. No gravel.										
40.0	SAND. Fine sand. No gravel.										
45.0	SAND. Fine to medium sand. No gravel.										
50.0	SAND. Fine to coarse sand. Very minor gravel to 3/4 inch.										
55.0	SAND. Fine to coarse sand. Minor gravel to 1 inch.									Superior lobe outwash	19.8% + #4
63.0	SAND. Very fine to fine sand. No gravel.										
65.0	T.D. 65 ft.										

Sand interval from 29 to 50 feet too thick to justify sampling below 30 feet.

LOG-A-GNINN08-UMORE PARK DRILLING LOGS.GPJ LOG-A-GNINN08.GDT Printed 5/30/08

DRILLING LOG

HOLE NO. O2300

Page 1 of 1

Property: UMore Park Property

Location: City of Rosemount & Empire Township, Dakota County, Minnesota

UTM Zone 15/NAD83/NAVD88

492,298.73 mE +/- 0.02 m 4,952,298.41 mN +/- 0.02 m

Elevation (ft.): 945.1 +/- 0.1 ft.

Ground Water Depth (ft.): Ground water not encountered

Ground Water Elevation (ft.):

Site: Snow covered field at natural grade.

Drilling Method: 9-inch flight auger Started: 1/4/08 1:05 PM

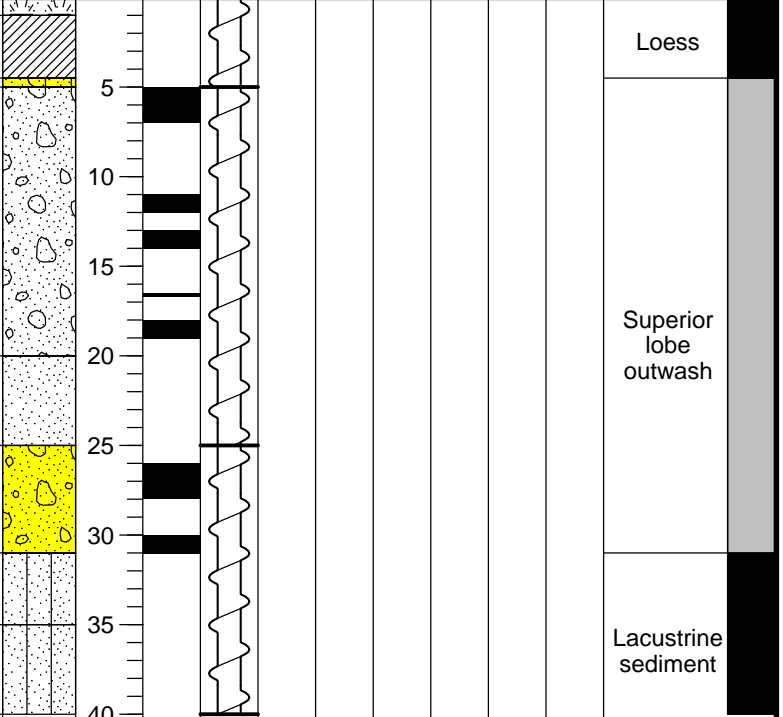
Drilling Contractor: Braun Intertec Completed: 1/4/08 2:00 PM

Drill Rig: CME-750

Logged By: J.D. Lehr

DRILLING & SAMPLING					TEST RESULTS (%)				Geologic Interpretation	Economic Classification
Graphic Log	Depth (ft.)	Gravel Per Drill Action	Sample Runs	Sampled Intervals	Total + #4 Sieve	+ 1.5 Inch	1.5 Inch to 3/4 Inch	3/4 Inch to #4 Sieve		

1.0	TOPSOIL. Silty, black.	944.1								
4.5	SILT. Brown.	940.6								
5.0	SAND. Fine to medium sand. Very minor gravel to 1/2 inch.	940.1								
	SAND. Fine to medium sand. Very minor trace gravel to 1 inch.									
20.0		925.1								
	SAND. Fine sand. No gravel.									
25.0		920.1								
	SAND. Fine to medium sand. Very minor gravel to 1-3/4 inches. Lower contact based on drill action.									
31.0		914.1								
	SAND. Very fine sand. No gravel.									
35.0		910.1								
	SAND. Very fine sand, very dirty. No gravel.									
40.0		905.1								



No samples taken. Estimated less than 5 percent gravel from 4.5 to 31 feet.

T.D.
40 ft.

LOG A GNINN08 UMORE PARK DRILLING LOGS.GPJ LOG A GNINN08.GDT Printed 5/30/08

DRILLING LOG

HOLE NO. O2500

Page 1 of 1

Property: UMore Park Property

Location: City of Rosemount & Empire Township, Dakota County, Minnesota

UTM Zone 15/NAD83/NAVD88

492,298.60 mE +/- 0.02 m 4,952,499.88 mN +/- 0.02 m

Elevation (ft.): 944.5 +/- 0.1 ft.

Ground Water Depth (ft.): Ground water not encountered

Ground Water Elevation (ft.):

Site: Snow covered field at natural grade.

Drilling Method: 9-inch flight auger

Started: 1/4/08 11:50 AM

Drilling Contractor: Braun Intertec

Completed: 1/4/08 1:00 PM

Drill Rig: CME-750

Logged By: J.D. Lehr

Graphic Log	Depth (ft.)	Gravel Per Drill Action	Sample Runs	Sampled Intervals	TEST RESULTS (%)					Geologic Interpretation	Economic Classification	
					Total + #4 Sieve	+ 1.5 Inch	1.5 Inch to 3/4 Inch	3/4 Inch to #4 Sieve	Sample Wt. (lbs)			
1.5 TOPSOIL. Silty, black.	943.0										Loess	
4.0 SILT. Brown.	940.5											
5.0 SAND. Fine to medium sand. No gravel.	939.5										Superior lobe outwash	
10.0 SAND. Fine to medium sand. Very minor trace gravel to 3/4 inch.	934.5											
15.0 SAND. Fine to medium sand. Very minor gravel to 1-1/4 inches.	929.5											
20.0 SAND. Fine to medium sand. Minor gravel to 2-3/4 inches.	924.5											
27.0 SAND. Medium to very coarse sand. Very minor gravel to 1 inch. Lower contact based on drill action.	917.5											
33.0 SAND. Very fine sand, dirty. No gravel. Lower contact gradational.	911.5										Lacustrine sediment	
45.0 SILT. Brown.	899.5											
T.D. 45 ft.												

No samples taken. Estimated less than 5 percent gravel from 4 to 27 feet.

LOG A GNIN08 UMORE PARK DRILLING LOGS.GPJ LOG A GNIN08.GDT Printed 5/30/08

DRILLING LOG

HOLE NO. O2700

Page 1 of 1

Property: UMore Park Property

Location: City of Rosemount & Empire Township, Dakota County, Minnesota

UTM Zone 15/NAD83/NAVD88

492,295.33 mE +/- 0.02 m 4,952,699.53 mN +/- 0.02 m

Elevation (ft.): 948.8 +/- 0.1 ft.

Ground Water Depth (ft.): Ground water not encountered

Ground Water Elevation (ft.):

Site: Snow covered grassy area in farm yard at natural grade.

Drilling Method: 9-inch flight auger

Started: 1/4/08 9:25 AM

Drilling Contractor: Braun Intertec

Completed: 1/4/08 11:00 AM

Drill Rig: CME-750

Logged By: J.D. Lehr

Depth (ft.)	Graphic Log	Gravel Per Drill Action	Sample Runs	Sampled Intervals	TEST RESULTS (%)				Geologic Interpretation	Economic Classification
					Total + #4 Sieve	+ 1.5 Inch	1.5 Inch to 3/4 Inch	3/4 Inch to #4 Sieve		
1.5	TOPSOIL. Silty, black.								Loess	
3.0	SILT. Brown.									
5.0	SAND. Fine sand. No gravel.								Superior lobe outwash	
10.0	SAND. Fine to medium sand. Very minor trace gravel to 1/2 inch.									
15.0	SAND. Fine to medium sand. Very minor gravel to 2-1/2 inches.									
25.0	SAND. Fine to medium sand. Very minor trace gravel to 1 inch.									
30.0	SAND. Fine sand. Very minor gravel to 1-1/2 inches.									
35.0	SAND. Fine to medium sand. Very minor gravel to 1 inch.									
40.0	SAND. Fine to coarse sand. Minor gravel to 1-1/2 inches.									
45.0	SAND. Fine to coarse sand. Very minor gravel to 1-3/4 inches.									
50.0	SAND. Fine to medium sand. Minor gravel to 3 inches.									
55.0	TILL. Clayey, gray.							Till		
T.D. 55 ft.										
No samples taken. Estimated less than 10 percent gravel from 3 to 50 feet.										

LOG A GNIN08 UMORE PARK DRILLING LOGS.GPJ LOG A GNIN08.GDT Printed 5/30/08

DRILLING LOG

HOLE NO. O2900

Page 1 of 1

Property: UMore Park Property

Location: City of Rosemount & Empire Township, Dakota County, Minnesota

UTM Zone 15/NAD83/NAVD88
 492,299.62 mE +/- 0.02 m 4,952,900.69 mN +/- 0.02 m
 Elevation (ft.): 945.5 +/- 0.1 ft.
 Ground Water Depth (ft.): Ground water not encountered
 Ground Water Elevation (ft.):
 Site: Snow covered corn stubble field at natural grade.

Drilling Method: 9-inch flight auger Started: 1/4/08 7:45 AM
 Drilling Contractor: Braun Intertec Completed: 1/4/08 9:10 AM
 Drill Rig: CME-750 Logged By: J.D. Lehr

Depth (ft.)	Graphic Log	Gravel Per Drill Action	Sample Runs	Sampled Intervals	TEST RESULTS (%)					Geologic Interpretation	Economic Classification
					Total + #4 Sieve	+ 1.5 Inch	1.5 Inch to 3/4 Inch	3/4 Inch to #4 Sieve	Sample Wt. (lbs)		
1.0	TOPSOIL. Silty, black.									Loess	
4.0	SILT. Brown.										
5.0	SAND. Fine to coarse sand, dirty. Minor gravel to 1 inch.									Superior lobe outwash	15.4% + #4
10.0	SAND. Fine to medium sand. No gravel.				4.2	0.0	1.2	3.0	27.8		
15.0	SAND. Fine to medium sand. Very minor gravel to 1 inch.										
20.0	SAND. Fine to medium sand. Very minor gravel to 1-1/2 inches.				13.6	2.6	3.0	8.0	26.5		
25.0	SAND. Fine to coarse sand. Minor gravel to 1-1/2 inches.										
30.0	SAND & GRAVEL. Fine to coarse sand. Gravel to 2-1/2 inches.				25.6	11.9	5.2	8.5	27.3		
35.0	SAND & GRAVEL. Fine to coarse sand. Gravel to 3 inches.				26.1	12.0	3.3	10.8	27.9		
40.0	SAND. Fine to coarse sand. Minor gravel to 1-3/4 inches.				18.5	4.2	6.9	7.4	17.2		
45.0	SAND. Fine to coarse sand. Minor gravel to 1-1/4 inches.				20.6	0.0	8.8	11.7	24.3		
50.0	SAND. Fine to coarse sand. Very minor gravel to 1 inch.				7.2	0.0	1.5	5.7	20.0		
55.0	SAND. Fine to coarse sand. Minor gravel to 2-1/2 inches.				22.8	9.3	5.9	7.5	21.5		
65.0	SAND. Fine to coarse sand. Very minor gravel to 1 inch.										
	T.D. 65 ft.										

LOG A GNIN08 UMORE PARK DRILLING LOGS.GPJ LOG A GNIN08.GDT Printed 5/30/08

DRILLING LOG

HOLE NO. O3100

Page 1 of 1

Property: UMore Park Property

Location: City of Rosemount & Empire Township, Dakota County, Minnesota

UTM Zone 15/NAD83/NAVD88

492,300.56 mE +/- 0.02 m 4,953,099.58 mN +/- 0.02 m

Elevation (ft.): 946.9 +/- 0.1 ft.

Ground Water Depth (ft.): Ground water not encountered

Ground Water Elevation (ft.):

Site: Snow covered corn stubble field at natural grade.

Drilling Method: 9-inch flight auger

Started: 1/3/08 3:20 PM

Drilling Contractor: Braun Intertec

Completed: 1/3/08 4:25 PM

Drill Rig: CME-750

Logged By: J.D. Lehr

DRILLING & SAMPLING

TEST RESULTS (%)

Geologic Interpretation
Economic Classification

Graphic Log	Depth (ft.)	Gravel Per Drill Action	Sample Runs	Sampled Intervals	Total + #4 Sieve	+ 1.5 Inch	1.5 Inch to 3/4 Inch	3/4 Inch to #4 Sieve	Sample Wt. (lbs)	Geologic Interpretation	Economic Classification
1.0 TOPSOIL. Silty, black.	945.9									Loess	
3.0 SILT. Brown.	943.9										
5.0 SAND. Fine sand. No gravel.	941.9									Superior lobe outwash	
SAND. Fine to medium sand. Minor gravel to 1 inch.											
10.0 SAND. Fine to medium sand. Very minor gravel to 1 inch.	936.9										
SAND. Fine to coarse sand. Very minor gravel to 2 inches.											
20.0	926.9									Lacustrine sediment	
SAND. Very fine to fine sand. No gravel. Thin (~2") silt lens present.	921.9										
30.0 SILT. Sandy (very fine), brown.	916.9										
40.0 SAND. Very fine sand, dirty. No gravel.	906.9										
45.0	901.9										
T.D. 45 ft.											
No samples taken. Estimated less than 10 percent gravel from 3 to 25 feet.											

LOG A GNNIN08 UMORE PARK DRILLING LOGS.GPJ LOG A GNNIN08.GDT Printed 5/30/08

DRILLING LOG

HOLE NO. O3300

Page 1 of 1

Property: UMore Park Property

Location: City of Rosemount & Empire Township, Dakota County, Minnesota

UTM Zone 15/NAD83/NAVD88

492,299.35 mE +/- 0.02 m 4,953,299.47 mN +/- 0.02 m

Elevation (ft.): 943.9 +/- 0.1 ft.

Ground Water Depth (ft.): Ground water not encountered

Ground Water Elevation (ft.):

Site: Snow covered corn stubble field at natural grade.

Drilling Method: 9-inch flight auger

Started: 1/3/08 2:05 PM

Drilling Contractor: Braun Intertec

Completed: 1/3/08 3:10 PM

Drill Rig: CME-750

Logged By: J.D. Lehr

DRILLING & SAMPLING

TEST RESULTS (%)

Geologic Interpretation

Economic Classification

Graphic Log	Depth (ft.)	Gravel Per Drill Action	Sample Runs	Sampled Intervals	Total + #4 Sieve	+ 1.5 Inch	1.5 Inch to 3/4 Inch	3/4 Inch to #4 Sieve	Sample Wt. (lbs)	Geologic Interpretation	Economic Classification
2.0 TOPSOIL. Silty, black.	941.9									Loess	
4.0 SILT. Brown.	939.9										
5.0 SAND & GRAVEL. Fine to coarse sand, slightly dirty. Gravel to 1-1/2 inches.	938.9				15.2	3.8	5.2	6.2	33.3	Superior lobe outwash	16.3 % + #4
10.0 SAND. Fine sand: Minor gravel to 1 inch.	933.9										
15.0 SAND. Fine to medium sand. Very minor gravel to 2-1/4 inches.	928.9			10.9							
20.0 SAND. Fine to medium sand. Minor gravel to 2-1/4 inches.	923.9			17.3							
25.0 SAND. Fine to coarse sand. Minor gravel to 2 inches.	918.9			20.7	5.7	4.1	10.9	24.8			
30.0 NO RECOVERY. Samples displaced while drilling silt below. Similar to 20 to 25 foot interval based on drill action.	913.9										
35.0 SILT. Brown.										Lacustrine sediment	
40.0 SAND. Very fine to fine sand. No gravel.	903.9										
45.0 SAND. Very fine to fine sand. No gravel.	898.9										
T.D. 45 ft.											

LOG A GNIN08 UMORE PARK DRILLING LOGS.GPJ LOG A GNIN08.GDT Printed 5/30/08

DRILLING LOG

HOLE NO. O3500

Page 1 of 1

Property: UMore Park Property

Location: City of Rosemount & Empire Township, Dakota County, Minnesota

UTM Zone 15/NAD83/NAVD88

492,300.95 mE +/- 0.02 m 4,953,411.70 mN +/- 0.02 m

Elevation (ft.): 938.7 +/- 0.1 ft.

Ground Water Depth (ft.): Ground water not encountered

Ground Water Elevation (ft.):

Site: Edge of snow covered field at natural grade.

Drilling Method: 9-inch flight auger

Started: 1/3/08 1:00 PM

Drilling Contractor: Braun Intertec

Completed: 1/3/08 2:00 PM

Drill Rig: CME-750

Logged By: J.D. Lehr

DRILLING & SAMPLING

TEST RESULTS (%)

Geologic Interpretation
Economic Classification

Depth (ft.)	Graphic Log	Gravel Per Drill Action	Sample Runs	Sampled Intervals	Total + #4 Sieve	+ 1.5 Inch	1.5 Inch to 3/4 Inch	3/4 Inch to #4 Sieve	Sample Wt. (lbs)	Geologic Interpretation	Economic Classification
1.5	TOPSOIL. Silty, black.									Loess	
4.0	SILT. Brown.										
5.0	SAND. Fine to coarse sand, slightly dirty. Minor gravel to 1-1/2 inches.				18.1	0.0	2.4	15.6	32.0	Superior lobe outwash	16.0 % + #4
10.0	SAND. Fine to medium sand. Minor gravel to 1-1/2 inches.				13.3	0.8	5.8	6.7	33.2		
15.0	SAND. Fine to medium sand. Very minor gravel to 2-1/4 inches.				7.0	3.2	0.3	3.5	28.5		
20.0	SAND. Fine to coarse sand. Very minor gravel to 1-1/2 inches.				11.7	3.5	3.2	5.0	26.3		
25.0	SAND. Fine to coarse sand. Very minor gravel to 2-1/2 inches.				25.7	7.3	7.5	10.9	30.7		
33.0	SAND & GRAVEL. Fine to coarse sand. Gravel to 1 inch.									Lacustrine sediment	
43.0	SILT. Sandy (very fine), brown.										
45.0	SAND. Very fine to fine sand. No gravel.										
	T.D. 45 ft.										

LOG A GNNIN08 UMORE PARK DRILLING LOGS.GPJ LOG A GNNIN08.GDT Printed 5/30/08

DRILLING LOG

HOLE NO. O3700

Page 1 of 1

Property: UMore Park Property

Location: City of Rosemount & Empire Township, Dakota County, Minnesota

UTM Zone 15/NAD83/NAVD88

492,298.57 mE +/- 0.02 m 4,953,696.71 mN +/- 0.02 m

Elevation (ft.): 935.1 +/- 0.1 ft.

Ground Water Depth (ft.): Ground water not encountered

Ground Water Elevation (ft.):

Site: Snow covered pasture at natural grade.

Drilling Method: 9-inch flight auger

Started: 1/3/08 10:25 AM

Drilling Contractor: Braun Intertec

Completed: 1/3/08 11:55 AM

Drill Rig: CME-750

Logged By: J.D. Lehr

DRILLING & SAMPLING

TEST RESULTS (%)

Geologic Interpretation

Economic Classification

Graphic Log	Depth (ft.)	Gravel Per Drill Action	Sample Runs	Sampled Intervals	Total + #4 Sieve	+ 1.5 Inch	1.5 Inch to 3/4 Inch	3/4 Inch to #4 Sieve	Sample Wt. (lbs)
	2.0								
	5.0								
	10.0								
	15.0								
	25.0								
	30.0								
	35.0								
	40.0								
	45.0								
	50.0								
	55.0								
	60.0								
	65.0								
	T.D. 65 ft.								

Loess

Superior lobe outwash

Lacustrine sediment

2.0	TOPSOIL. Silty, black.	933.1
5.0	SILT. Brown.	930.1
10.0	SAND. Very fine to fine sand. Very minor gravel to 1-1/4 inches.	925.1
15.0	SAND. Fine to coarse sand. Very minor gravel to 1-3/4 inches.	920.1
25.0	SAND. Fine to medium sand. Very minor gravel to 1 inch.	910.1
30.0	SAND. Very fine to fine sand. No gravel. Thin (~1") silt lens(es) present.	905.1
35.0	SAND. Fine sand. Very minor gravel to 1 inch. Thin (~1") silt lens(es) present.	900.1
40.0	SAND. Fine to coarse sand. Minor gravel to 1-1/2 inches.	895.1
45.0	SAND. Fine to coarse sand. Very minor gravel to 1-1/2 inches.	890.1
50.0	SAND. Fine to coarse sand. Minor gravel to 1-1/4 inches.	885.1
55.0	SAND. Fine to coarse sand. Very minor gravel to 1 inch.	880.1
60.0	SAND. Fine sand. No gravel.	875.1
65.0	SILT. Brown.	870.1

No samples taken. Estimated less than 5 percent gravel from 5 to 55 feet.

LOG A GNIN08 UMORE PARK DRILLING LOGS.GPJ LOG A GNIN08.GDT Printed 5/30/08

DRILLING LOG

HOLE NO. OO0800

Page 1 of 1

Property: UMore Park Property

Location: City of Rosemount & Empire Township, Dakota County, Minnesota

UTM Zone 15/NAD83/NAVD88

494,893.88 mE +/- 0.02 m 4,950,799.37 mN +/- 0.02 m

Elevation (ft.): 933.7 +/- 0.1 ft.

Ground Water Depth (ft.): Ground water not encountered

Ground Water Elevation (ft.):

Site: Soybean stubble field at natural grade.

Drilling Method: 9-inch flight auger

Started: 11/13/07 3:50 PM

Drilling Contractor: Braun Intertec

Completed: 11/13/07 4:45 PM

Drill Rig: CME-750

Logged By: J.D. Lehr

		DRILLING & SAMPLING				TEST RESULTS (%)					Geologic Interpretation	Economic Classification
Graphic Log	Depth (ft.)	Gravel Per Drill Action	Sample Runs	Sampled Intervals	Total + #4 Sieve	+ 1.5 Inch	1.5 Inch to 3/4 Inch	3/4 Inch to #4 Sieve	Sample Wt. (lbs)			
1.0	TOPSOIL. Silty, sandy, black.										Loess	
2.0	SILT. Brown.										Superior lobe outwash	17.0 % + #4
5.0	SAND. Very fine to fine sand. Minor gravel to 1-1/2 inches.											
10.0	SAND. Fine sand: Very minor gravel to 3 inches.											
15.0	SAND. Fine sand. Very minor gravel to 1-1/4 inches.											
20.0	SAND. Fine to medium sand. Minor gravel to 2 inches.										Superior lobe outwash	17.0 % + #4
25.0	SAND & GRAVEL. Fine to coarse sand. Gravel to 2 inches.											
29.0	NO RECOVERY. Samples displaced while drilling till below. Similar to 20 to 25 foot interval based on drill action.											
35.0	TILL. Clayey, sandy, gray.										Till	
	T.D. 35 ft.											

LOG A GNIN08 UMORE PARK DRILLING LOGS.GPJ LOG A GNIN08.GDT Printed 5/30/08

DRILLING LOG

HOLE NO. OO1000

Page 1 of 1

Property: UMore Park Property

Location: City of Rosemount & Empire Township, Dakota County, Minnesota

UTM Zone 15/NAD83/NAVD88

494,920.92 mE +/- 0.02 m 4,951,000.24 mN +/- 0.02 m

Elevation (ft.): 942.2 +/- 0.1 ft.

Ground Water Depth (ft.): Ground water not encountered

Ground Water Elevation (ft.):

Site: Edge of plowed field near top of hill at natural grade.

Drilling Method: 9-inch flight auger

Started: 11/14/07 7:35 AM

Drilling Contractor: Braun Intertec

Completed: 11/14/07 8:10 AM

Drill Rig: CME-750

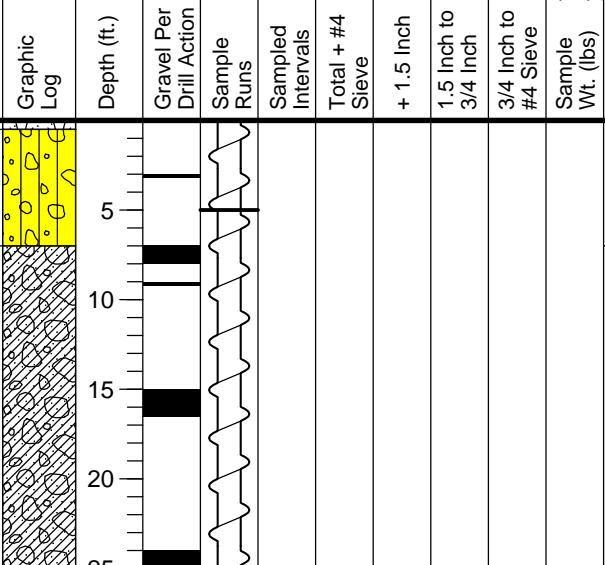
Logged By: J.D. Lehr

DRILLING & SAMPLING

TEST RESULTS (%)

Geologic Interpretation
Economic Classification

0.5 **TOPSOIL.** Sandy, dark brown. 941.7
SAND. Very fine sand, dirty, reddish brown. Very minor gravel to 1-3/4 inches.
 7.0 935.2
TILL. Clayey, sandy, yellowish brown.
 25.0 917.2



Loess

Till

T.D.
25 ft.

No samples taken - no outwash present.
 Numerous boulders along edge of field.

LOG A GNIN08 UMORE PARK DRILLING LOGS.GPJ LOG A GNIN08.GDT Printed 5/30/08

DRILLING LOG

HOLE NO. OO1200

Page 1 of 1

Property: UMore Park Property

Location: City of Rosemount & Empire Township, Dakota County, Minnesota

UTM Zone 15/NAD83/NAVD88

494,916.09 mE +/- 0.02 m 4,951,200.02 mN +/- 0.02 m

Elevation (ft.): 934.2 +/- 0.1 ft.

Ground Water Depth (ft.): Ground water not encountered

Ground Water Elevation (ft.):

Site: Edge of plowed field at natural grade.

Drilling Method: 9-inch flight auger

Started: 11/14/07 8:15 AM

Drilling Contractor: Braun Intertec

Completed: 11/14/07 9:50 AM

Drill Rig: CME-750

Logged By: J.D. Lehr

DRILLING & SAMPLING

TEST RESULTS (%)

Geologic Interpretation

Economic Classification

Graphic Log	Depth (ft.)	Gravel Per Drill Action	Sample Runs	Sampled Intervals	Total + #4 Sieve	+ 1.5 Inch	1.5 Inch to 3/4 Inch	3/4 Inch to #4 Sieve	Sample Wt. (lbs)	Geologic Interpretation	Economic Classification
1.5 TOPSOIL. Silty, black.	932.7										
3.5 SILT. Brown.	930.7									Loess	
5.0 SAND. Very fine sand. No gravel.	929.2										
SAND. Fine to medium sand. Very minor gravel to 1 inch.	924.2				7.5	0.0	1.0	6.5	25.7		
SAND. Fine sand. Very minor gravel to 2-1/2 inches.	919.2				7.8	3.0	1.2	3.6	24.7		
SAND. Fine to medium sand. Very minor gravel to 1 inch.	919.2				5.0	0.0	2.0	3.0	24.6		
25.0	909.2				5.7	0.0	0.8	4.9	23.8	Superior lobe outwash	
SAND. Fine to coarse sand. Minor gravel to 1-1/2 inches.	909.2				15.3	0.0	6.8	8.5	24.2		
35.0	899.2				15.7	1.1	3.4	11.2	25.1		
SAND. Fine to coarse sand, dirty. Minor gravel to 1-1/2 inches. Yellowish-colored limestone-rich sand & gravel begins in this interval at about 38 feet.	894.2				22.8	1.5	2.5	18.7	19.5		
SAND. Fine to coarse sand, slightly dirty. Very minor gravel to 1 inch. Yellowish brown color.	889.2				10.9	0.0	2.1	8.8	14.3	Older outwash	
TILL. Clayey, sandy, yellowish brown.	889.2										
65.0	869.2									Till	
T.D.	65 ft.										

11.3% + #4

DRILLING LOG

HOLE NO. OO1400

Page 1 of 1

Property: UMore Park Property

Location: City of Rosemount & Empire Township, Dakota County, Minnesota

UTM Zone 15/NAD83/NAVD88

494,915.99 mE +/- 0.02 m 4,951,400.46 mN +/- 0.02 m

Elevation (ft.): 932.2 +/- 0.1 ft.

Ground Water Depth (ft.): Ground water not encountered

Ground Water Elevation (ft.):

Site: Edge of plowed field at natural grade.

Drilling Method: 9-inch flight auger

Started: 11/14/07 9:55 AM

Drilling Contractor: Braun Intertec

Completed: 11/14/07 11:00 AM

Drill Rig: CME-750

Logged By: J.D. Lehr

Depth (ft.)	Graphic Log	Gravel Per Drill Action	Sample Runs	Sampled Intervals	TEST RESULTS (%)					Geologic Interpretation	Economic Classification	
					Total + #4 Sieve	+ 1.5 Inch	1.5 Inch to 3/4 Inch	3/4 Inch to #4 Sieve	Sample Wt. (lbs)			
1.5	TOPSOIL. Silty, black.										Loess	
4.0	SILT. Brown.											
5.0	SAND. Fine sand, slightly dirty. Very minor trace gravel to 1/2 inch.				16.2	0.0	2.7	13.5	31.8		Superior lobe outwash	23.9 % + #4
10.0	SAND. Fine to medium sand. Minor gravel to 1 inch. SAND & GRAVEL. Fine to coarse sand. Gravel to 3-1/2 inches.				30.2	3.6	4.1	22.6	25.9			
20.0	SAND. Fine to coarse sand. Minor gravel to 1-1/2 inches.				28.4	9.5	2.3	16.6	21.5			
25.0	SAND & GRAVEL. Fine to coarse sand. Gravel to 1-1/2 inches.				21.4	1.6	4.6	15.2	17.7			
35.0	SAND & GRAVEL. Fine to coarse sand. Gravel to 1-1/2 inches.				26.3	0.0	7.8	18.5	25.8			
42.0	SAND. Fine to coarse sand. Minor gravel to 1-1/2 inches.				25.7	1.0	5.1	19.7	21.2			
45.0	TILL. Clayey, sandy, yellowish brown.				21.6	2.0	5.3	14.3	25.0		Till	
	T.D. 45 ft.											

LOG A GNIN08 UMORE PARK DRILLING LOGS.GPJ LOG A GNIN08.GDT Printed 5/30/08

DRILLING LOG

HOLE NO. OO1600

Page 1 of 1

Property: UMore Park Property

Location: City of Rosemount & Empire Township, Dakota County, Minnesota

UTM Zone 15/NAD83/NAVD88
 494,900.05 mE +/- 0.02 m 4,951,606.35 mN +/- 0.02 m
 Elevation (ft.): 930.5 +/- 0.1 ft.
 Ground Water Depth (ft.): 55.0
 Ground Water Elevation (ft.): 875.5
 Site: Snow covered field, surface likely disturbed.

Drilling Method: 9-inch flight auger Started: 3/26/08 11:05 AM
 Drilling Contractor: Braun Intertec Completed: 3/26/08 12:25 PM
 Drill Rig: CME-750 Logged By: J.D. Lehr

		DRILLING & SAMPLING				TEST RESULTS (%)					Geologic Interpretation	Economic Classification
Graphic Log	Depth (ft.)	Gravel Per Drill Action	Sample Runs	Sampled Intervals	Total + #4 Sieve	+ 1.5 Inch	1.5 Inch to 3/4 Inch	3/4 Inch to #4 Sieve	Sample Wt. (lbs)			
FILL. Sand, gravel & silt. Lower contact based on drill action.	6.0	924.5									Fill	
SAND. Fine sand. Minor gravel to 1-3/4 inches.	10.0	920.5									Superior lobe outwash	22.2% + #4
SAND. Fine to medium sand. Very minor gravel to 2 inches. Dark colored.	15.0	915.5			15.7	8.2	4.3	3.2	26.3			
SAND & GRAVEL. Fine to medium sand. Gravel to 2-1/4 inches.	20.0	910.5			37.4	8.3	12.9	16.2	41.0			
SAND & GRAVEL. Fine to coarse sand. Gravel to 2-1/2 inches.	25.0	905.5			26.1	12.2	4.2	9.7	26.4			
SAND & GRAVEL. Medium to very coarse sand. Gravel to 2 inches.	30.0	900.5			25.2	1.6	5.3	18.3	42.0			
SAND & GRAVEL. Fine to very coarse sand. Gravel to 3 inches.	35.0	895.5			25.4	4.2	3.1	18.1	34.4			
SAND. Fine to very coarse sand. Minor gravel to 1 inch.	40.0	890.5			20.0	0.0	2.1	18.0	24.2			
SAND. Fine to medium sand. Minor gravel to 1 inch.	45.0	885.5			21.2	0.0	6.1	15.1	31.1			
SAND. Fine to very coarse sand. Minor gravel to 1 inch. Small sample.	50.0	880.5			18.2	0.0	2.9	15.3	42.2			
SAND. Fine to very coarse sand. Minor gravel to 1-1/2 inches. Small sample.	55.0	875.5										
TILL. Clayey, yellowish brown.	60.0	870.5								Till		
			T.D.									
			60 ft.									

LOG A GNINN08 UMORE PARK DRILLING LOGS.GPJ LOG A GNINN08.GDT Printed: 5/30/08

DRILLING LOG

HOLE NO. OO1800

Page 1 of 1

Property: UMore Park Property

Location: City of Rosemount & Empire Township, Dakota County, Minnesota

UTM Zone 15/NAD83/NAVD88

494,877.82 mE +/- 0.02 m 4,951,784.30 mN +/- 0.02 m

Elevation (ft.): 931.3 +/- 0.1 ft.

Ground Water Depth (ft.): Ground water not encountered

Ground Water Elevation (ft.):

Site: Yard area of wood grinding business, surface likely disturbed.

Drilling Method: 9-inch flight auger

Started: 3/26/08 9:30 AM

Drilling Contractor: Braun Intertec

Completed: 3/26/08 11:00 AM

Drill Rig: CME-750

Logged By: J.D. Lehr

DRILLING & SAMPLING

TEST RESULTS (%)

Geologic Interpretation

Economic Classification

Graphic Log	Depth (ft.)	Gravel Per Drill Action	Sample Runs	Sampled Intervals	Total + #4 Sieve	+ 1.5 Inch	1.5 Inch to 3/4 Inch	3/4 Inch to #4 Sieve	Sample Wt. (lbs)	Geologic Interpretation	Economic Classification
	3.0									Fill	
	5.0									Superior lobe outwash	20.9% + #4
	10.0				17.7	2.4	7.4	7.9	36.8		
	15.0										
	20.0				11.8	0.0	3.2	8.5	27.9		
	25.0										
	30.0				26.6	4.3	6.4	15.9	37.1		
	35.0				33.2	12.6	5.4	15.2	32.3		
	40.0				24.2	3.9	3.6	16.7	37.5		
	45.0				9.1	0.0	3.3	5.8	18.9		
	50.0				25.7	0.8	3.1	21.9	27.7		
	55.0				28.5	1.0	5.2	22.2	40.5		
	60.0									Lacustrine sediment	
	65.0										

LOG A GNNIN08 UMORE PARK DRILLING LOGS.GPJ LOG A GNNIN08.GDT Printed 5/30/08

DRILLING LOG

HOLE NO. OO2000

Page 1 of 1

Property: UMore Park Property

Location: City of Rosemount & Empire Township, Dakota County County, Minnesota

UTM Zone 15/NAD83/NAVD88

494,899.58 mE +/- 0.02 m 4,951,997.56 mN +/- 0.02 m

Elevation (ft.): 929.5 +/- 0.1 ft.

Ground Water Depth (ft.): Ground water not encountered

Ground Water Elevation (ft.):

Site: Yard area of wood grinding business, surface likely disturbed.

Drilling Method: 9-inch flight auger Started: 3/24/08 2:40 PM

Drilling Contractor: Braun Intertec Completed: 3/24/08 4:00 PM

Drill Rig: CME-750

Logged By: J.D. Lehr

DRILLING & SAMPLING					TEST RESULTS (%)					Geologic Interpretation	Economic Classification
Graphic Log	Depth (ft.)	Gravel Per Drill Action	Sample Runs	Sampled Intervals	Total + #4 Sieve	+ 1.5 Inch	1.5 Inch to 3/4 Inch	3/4 Inch to #4 Sieve	Sample Wt. (lbs)		
FILL. Gravel, silty, sandy.	4.0	925.5								Fill	
SAND. Fine to medium sand. Very minor gravel to 1-1/2 inches.	5.0	924.5			9.6	2.5	3.9	3.2	27.3	Superior lobe outwash	18.7 % + #4
SAND. Fine sand. Very minor gravel to 1-1/4 inches.	10.0	919.5			20.7	5.6	9.0	6.1	31.2		
SAND. Fine sand. Minor gravel to 2-1/2 inches.	15.0	914.5			31.8	7.7	8.8	15.4	36.3		
SAND & GRAVEL. Fine to coarse sand. Gravel to 2 inches.	20.0	909.5			18.3	3.0	5.7	9.6	30.4		
SAND. Fine to coarse sand. Minor gravel to 2-1/2 inches.	25.0	904.5			15.6	4.0	3.4	8.2	30.5		
SAND & GRAVEL. Fine to very coarse sand. Gravel to 5 inches.	30.0	899.5			25.8	13.7	3.7	8.3	37.6		
SAND. Fine to very coarse sand. Minor gravel to 1-3/4 inches.	35.0	894.5			19.5	2.8	5.7	11.0	28.8		
SAND. Fine to very coarse sand. Minor gravel to 2 inches.	40.0	889.5			18.7	2.2	5.3	11.2	28.6		
SAND. Fine to coarse sand. Minor gravel to 3-1/2 inches.	45.0	884.5			17.6	9.1	1.7	6.8	26.6		
SAND. Fine to coarse sand. Very minor gravel to 1-1/2 inches.	50.0	879.5			10.7	0.0	3.1	7.7	26.8		
SAND. Fine to medium sand. Very minor trace pea gravel.	55.0	874.5									
	60.0										
	65.0	864.5									
	T.D. 65 ft.										

LOG A GNINN08 UMORE PARK DRILLING LOGS.GPJ LOG A GNINN08.GDT Printed 5/30/08

DRILLING LOG

HOLE NO. OO2200

Page 1 of 1

Property: UMore Park Property

Location: City of Rosemount & Empire Township, Dakota County, Minnesota

UTM Zone 15/NAD83/NAVD88

494,900.53 mE +/- 0.02 m 4,952,199.21 mN +/- 0.02 m

Elevation (ft.): 929.4 +/- 0.1 ft.

Ground Water Depth (ft.): Ground water not encountered

Ground Water Elevation (ft.):

Site: Snow covered grassy area, surface likely disturbed.

Drilling Method: 9-inch flight auger

Started: 3/21/08 7:15 AM

Drilling Contractor: Braun Intertec

Completed: 3/21/08 8:50 AM

Drill Rig: CME-750

Logged By: J.D. Lehr

		DRILLING & SAMPLING					TEST RESULTS (%)					Geologic Interpretation	Economic Classification
Graphic Log	Depth (ft.)	Gravel Per Drill Action	Sample Runs	Sampled Intervals	Total + #4 Sieve	+ 1.5 Inch	1.5 Inch to 3/4 Inch	3/4 Inch to #4 Sieve	Sample Wt. (lbs)				
1.0	TOPSOIL. Silty, sandy, dark brown.											Loess	
5.0	SAND. Fine to medium sand. Very minor gravel to 1 inch.					13.7	0.9	4.6	8.3	37.5		Superior lobe outwash	22.6% + #4
10.0	SAND. Fine to coarse sand. Very minor gravel to 1-3/4 inches.					25.8	2.7	7.6	15.5	32.7			
15.0	SAND & GRAVEL. Fine to very coarse sand. Gravel to 1-3/4 inches.					32.1	6.0	6.1	20.0	35.5			
25.0	SAND & GRAVEL. Fine to very coarse sand. Gravel to 3 inches.					35.3	5.2	6.8	23.3	36.2			
30.0	SAND. Fine to coarse sand. Minor gravel to 1-3/4 inches.					21.5	1.0	5.0	15.5	27.4			
35.0	SAND. Fine to very coarse sand. Minor gravel to 1-1/4 inches.					23.6	0.0	7.5	16.1	27.7			
40.0	SAND & GRAVEL. Fine to very coarse sand. Gravel to 1-1/4 inches.					30.1	1.0	7.0	22.0	33.3			
45.0	SAND. Fine to very coarse sand. Minor gravel to 2 inches.					15.4	1.1	1.7	12.6	22.6			
50.0	SAND. Fine to coarse sand. Very minor gravel to 3 inches.					13.1	4.2	3.3	5.6	23.6			
55.0	SAND. Fine to coarse sand. Very minor gravel to 2 inches.												
60.0	SAND. Fine to coarse sand. Very minor gravel to 1 inch.												
65.0	SAND. Fine to coarse sand. Very minor gravel to 3/4 inch.												
	T.D. 65 ft.												

LOG A GNIN08 UMORE PARK DRILLING LOGS.GPJ LOG A GNIN08.GDT Printed 5/30/08

DRILLING LOG

HOLE NO. OO2700

Page 1 of 2

Property: UMore Park Property

Location: City of Rosemount & Empire Township, Dakota County, Minnesota

UTM Zone 15/NAD83/NAVD88

494,871.12 mE +/- 0.02 m 4,952,685.84 mN +/- 0.02 m

Elevation (ft.): 934.2 +/- 0.1 ft.

Ground Water Depth (ft.): Ground water level greater than 60 feet

Ground Water Elevation (ft.):

Site: Grassy lawn at natural grade.

Drilling Method: 4x6 Rotasonic

Started: 3/27/08 4:05 PM

Drilling Contractor: Traut Wells

Completed: 3/27/08 5:40 PM

Drill Rig: Versasonic

Logged By: J.D. Lehr

Depth (ft.)	Graphic Log	DRILLING & SAMPLING					TEST RESULTS (%)				Geologic Interpretation	Economic Classification
		Gravel Per Drill Action	Sample Runs	Sampled Intervals	Total + #4 Sieve	+ 1.5 Inch	1.5 Inch to 3/4 Inch	3/4 Inch to #4 Sieve	Sample Wt. (lbs)			
3.0	FILL. Silty, sandy, gravelly.										Fill	
5.0	SILT. Sandy towards bottom of interval, brown.										Loess	
10.0	SAND. Fine to medium sand, slightly dirty from 5 to 6 feet. Very minor gravel to 1-1/2 inches.											
15.0	SAND. Fine sand. Very minor trace gravel to 1/2 inch.				10.4	1.9	4.2	4.3	40.2			
20.0	SAND. Fine to medium sand. Very minor gravel to 1-3/4 inches.											
25.0	SAND & GRAVEL. Fine to very coarse sand, slightly dirty. Gravel to 3-1/2 inches.				33.2	5.8	10.3	17.1	40.2			
30.0	SAND & GRAVEL. Fine to very coarse sand. Gravel to 4 inches.											
35.0	SAND & GRAVEL. Fine to very coarse sand. Gravel to 4 inches.				28.8	5.7	6.3	16.8	44.5			
40.0	SAND & GRAVEL. Fine to very coarse sand, slightly dirty. Gravel to 4 inches.											
45.0	SAND & GRAVEL. Fine to very coarse sand. Gravel to 2-1/2 inches.				28.9	5.9	6.6	16.5	61.7		Superior lobe outwash	22.3% + #4
50.0	SAND & GRAVEL. Fine to very coarse sand. Gravel to 2-1/2 inches.											
55.0	SAND. Fine to medium sand. Very minor gravel to 1 inch.				19.3	2.4	5.4	11.5	55.8			
60.0	SAND. Fine to very coarse sand. Very minor gravel to 1 inch.											
65.0	SAND. Fine to very coarse sand. Very minor gravel to 1 inch.				9.2	0.0	1.0	8.1	49.4			
70.0	SAND & GRAVEL. Fine to coarse sand, slightly dirty. Gravel to 2-3/4 inches.											
75.0	SAND & GRAVEL. Fine to coarse sand, slightly dirty. Gravel to 2-3/4 inches.				34.9	4.4	10.7	19.9	43.6			

Continued Next Page

LOG A GNNIN08 UMORE PARK DRILLING LOGS.GPJ LOG A GNNIN08.GDT Printed 5/30/08

DRILLING LOG

HOLE NO. OO2700

Page 2 of 2

Property: UMore Park Property

Location: City of Rosemount & Empire Township, Dakota County, Minnesota

UTM Zone 15/NAD83/NAVD88

494,871.12 mE +/- 0.02 m 4,952,685.84 mN +/- 0.02 m

Elevation (ft.): 934.2 +/- 0.1 ft.

Ground Water Depth (ft.): Ground water level greater than 60 feet

Ground Water Elevation (ft.):

Site: Grassy lawn at natural grade.

Drilling Method: 4x6 Rotasonic

Started: 3/27/08 4:05 PM

Drilling Contractor: Traut Wells

Completed: 3/27/08 5:40 PM

Drill Rig: Versasonic

Logged By: J.D. Lehr

		DRILLING & SAMPLING				TEST RESULTS (%)				Geologic Interpretation	Economic Classification	
Graphic Log	Depth (ft.)	Gravel Per Drill Action	Sample Runs	Sampled Intervals	Total + #4 Sieve	+ 1.5 Inch	1.5 Inch to 3/4 Inch	3/4 Inch to #4 Sieve	Sample Wt. (lbs)			
	78.0											
	80.0											
	82.0											
	85.0											
	90.0											
	95.0											
	100.0											
	T.D. 100 ft.											

856.2

80.0 **SAND.** Fine to medium sand. No gravel.

854.2

82.0 **SAND.** Very fine sand. No gravel.

852.2

SILT. Brown. 90 to 100 foot sample discarded & not photographed.

Lacustrine sediment

DRILLING LOG

HOLE NO. OO2800

Page 1 of 1

Property: UMore Park Property

Location: City of Rosemount & Empire Township, Dakota County, Minnesota

UTM Zone 15/NAD83/NAVD88

494,917.68 mE +/- 0.02 m 4,952,779.89 mN +/- 0.02 m

Elevation (ft.): 934.4 +/- 0.1 ft.

Ground Water Depth (ft.): Ground water not encountered

Ground Water Elevation (ft.):

Site: Snow covered grassy area, surface likely disturbed.

Drilling Method: 9-inch flight auger

Started: 3/25/08 1:45 PM

Drilling Contractor: Braun Intertec

Completed: 3/25/08 3:10 PM

Drill Rig: CME-750

Logged By: J.D. Lehr

		DRILLING & SAMPLING					TEST RESULTS (%)					Geologic Interpretation	Economic Classification
Graphic Log	Depth (ft.)	Gravel Per Drill Action	Sample Runs	Sampled Intervals	Total + #4 Sieve	+ 1.5 Inch	1.5 Inch to 3/4 Inch	3/4 Inch to #4 Sieve	Sample Wt. (lbs)				
	3.0										Fill		
FILL. Sandy, silty, gravelly.	931.4												
SAND & GRAVEL. Fine to coarse sand. Gravel to 1-3/4 inches.	929.4												
SAND. Fine to coarse sand. Very minor gravel to 3/4 inch.	924.4					18.4	3.1	6.5	8.8	38.8			
SAND. Fine to coarse sand. Very minor gravel to 1-3/4 inches.	919.4												
SAND. Fine sand. Very minor gravel to 1-3/4 inches.	914.4												
SAND. Fine to medium sand. Very minor gravel to 1-1/2 inches.	909.4					13.3	4.3	1.9	7.2	28.8			
SAND & GRAVEL. Medium to very coarse sand. Gravel to 1-1/2 inches.	904.4					30.0	2.1	4.3	23.5	36.6			
SAND. Fine to coarse sand. Minor gravel to 3-1/2 inches.	899.4					20.0	4.5	3.4	12.1	41.2			
SAND & GRAVEL. Fine to very coarse sand. Gravel to 3 inches.	889.4					27.6	9.9	5.7	12.0	43.6	Superior lobe outwash		
SAND & GRAVEL. Fine to very coarse sand. Gravel to 2 inches. Small sample volume.	884.4					29.4	8.5	8.1	12.8	37.8			
SAND & GRAVEL. Fine to very coarse sand. Gravel to 1 inch. Small sample volume.	879.4												
SAND & GRAVEL. Fine to very coarse sand. Gravel to 2-1/2 inches, mostly less than 1 inch. Small sample volume.	874.4					26.9	2.1	5.8	19.0	60.0			
SAND. Fine to medium sand. Very minor gravel to 3/4 inch. Small sample volume.	869.4												
	T.D. 65 ft.												

22.7% + #4

LOG A GNIN08 UMORE PARK DRILLING LOGS.GPJ LOG A GNIN08.GDT Printed 5/30/08

DRILLING LOG

HOLE NO. OO3000

Page 1 of 1

Property: UMore Park Property

Location: City of Rosemount & Empire Township, Dakota County, Minnesota

UTM Zone 15/NAD83/NAVD88

494,900.08 mE +/- 0.02 m 4,952,998.84 mN +/- 0.02 m

Elevation (ft.): 935.7 +/- 0.1 ft.

Ground Water Depth (ft.): Ground water not encountered

Ground Water Elevation (ft.):

Site: Snow covered field at natural grade.

Drilling Method: 9-inch flight auger

Started: 2/7/08 8:50 AM

Drilling Contractor: Braun Intertec

Completed: 2/7/08 9:55 AM

Drill Rig: CME-750

Logged By: J.D. Lehr

Depth (ft.)	Graphic Log	Gravel Per Drill Action	Sample Runs	Sampled Intervals	TEST RESULTS (%)					Geologic Interpretation	Economic Classification
					Total + #4 Sieve	+ 1.5 Inch	1.5 Inch to 3/4 Inch	3/4 Inch to #4 Sieve	Sample Wt. (lbs)		
1.5	TOPSOIL. Silty, black.									Loess	
4.5	SILT. Brown.										
5.0	SAND. Fine to medium sand. Very minor gravel to 3/4 inch.									Superior lobe outwash 17.2% + #4	
10.0	SAND. Fine sand. Very minor gravel to 1-1/2 inches.				5.4	0.7	1.1	3.7	32.2		
15.0	SAND. Fine sand. Very minor trace gravel to 1/2 inch.										
20.0	SAND. Fine to medium sand. Very minor gravel to 1 inch.										
25.0	SAND. Fine to very coarse sand. Minor gravel to 1-1/4 inches.				24.0	0.0	4.7	19.3	31.6		
30.0	SAND. Fine to very coarse sand. Minor gravel to 1-3/4 inches.				23.2	0.8	6.4	16.1	36.4		
35.0	SAND. Fine to very coarse sand. Minor gravel to 1-3/4 inches.				22.4	1.5	4.2	16.7	33.4		
40.0	SAND & GRAVEL. Fine to coarse sand. Gravel to 1-3/4 inches.				33.4	11.1	6.5	15.8	34.9		
45.0	SAND. Fine to very coarse sand. Minor gravel to 1-1/2 inches.				22.2	0.0	4.8	17.4	23.4		
50.0	SAND. Fine to coarse sand. Very minor gravel to 1-1/2 inches.				17.0	5.3	2.9	8.8	27.8		
55.0	SAND. Fine to very coarse sand. Minor gravel to 1 inch.				12.5	1.0	2.7	8.8	21.6		
60.0	SAND. Fine to very coarse sand. Minor gravel to 1 inch.				19.9	0.0	3.4	16.4	20.7		
65.0	T.D. 65 ft.										

LOG A GNNIN08 UMORE PARK DRILLING LOGS.GPJ LOG A GNNIN08.GDT Printed 5/30/08

DRILLING LOG

HOLE NO. OO3200

Page 1 of 1

Property: UMore Park Property

Location: City of Rosemount & Empire Township, Dakota County, Minnesota

UTM Zone 15/NAD83/NAVD88

494,882.09 mE +/- 0.02 m 4,953,191.59 mN +/- 0.02 m

Elevation (ft.): 929.8 +/- 0.1 ft.

Ground Water Depth (ft.): Ground water not encountered

Ground Water Elevation (ft.):

Site: Snow covered clearing in woods a few feet above natural grade.

Drilling Method: 9-inch flight auger

Started: 2/7/08 7:20 AM

Drilling Contractor: Braun Intertec

Completed: 2/7/08 8:45 AM

Drill Rig: CME-750

Logged By: J.D. Lehr

DRILLING & SAMPLING

TEST RESULTS (%)

Geologic Interpretation
Economic Classification

Graphic Log	Depth (ft.)	Gravel Per Drill Action	Sample Runs	Sampled Intervals	Total + #4 Sieve	+ 1.5 Inch	1.5 Inch to 3/4 Inch	3/4 Inch to #4 Sieve	Sample Wt. (lbs)	Geologic Interpretation	Economic Classification
FILL. Silty, black & brown.	4.0									Fill	
6.0 TOPSOIL. Silty, black. Lower contact based on drill action.	925.8									Loess	
SAND. Fine to medium sand. Very minor gravel to 1 inch.	923.8										
	15.0				10.0	0.0	3.2	6.9	26.5		
SAND. Fine to coarse sand. Very minor gravel to 1 inch.	914.8										
	20.0				10.1	0.0	1.3	8.7	15.7		
SAND & GRAVEL. Fine to very coarse sand, slightly dirty. Gravel to 3-1/2 inches.	909.8										
	25.0				35.1	11.8	5.2	18.1	27.3		
SAND & GRAVEL. Fine to coarse sand. Gravel to 3 inches.	904.8										
	30.0				29.7	9.2	6.2	14.2	41.5		
SAND & GRAVEL. Fine to very coarse sand. Gravel to 3 inches.	899.8									Superior lobe outwash	
	40.0				33.6	10.9	5.8	16.9	33.0		
	45.0				32.0	7.5	6.9	17.5	38.5		
SAND & GRAVEL. Fine to very coarse sand. Gravel to 2-1/2 inches.	889.8										
	50.0				30.4	6.2	6.3	17.8	32.0		
SAND. Fine to very coarse sand. Minor gravel to 2-1/2 inches.	884.8										
	55.0				22.4	7.2	5.0	10.2	31.5		
SAND. Fine to very coarse sand. Minor gravel to 1-1/2 inches.	879.8										
	60.0				23.5	0.0	3.6	20.0	41.9		
TILL. Clayey, yellowish brown to gray.	874.8									Till	
	869.8										

24.0 % + #4

T.D.
60 ft.

LOG A GNNIN08 UMORE PARK DRILLING LOGS.GPJ LOG A GNNIN08.GDT Printed 5/30/08

DRILLING LOG

HOLE NO. OO3400

Page 1 of 1

Property: UMore Park Property

Location: City of Rosemount & Empire Township, Dakota County, Minnesota

UTM Zone 15/NAD83/NAVD88

494,899.09 mE +/- 0.02 m 4,953,400.05 mN +/- 0.02 m

Elevation (ft.): 921.4 +/- 0.1 ft.

Ground Water Depth (ft.): Ground water not encountered

Ground Water Elevation (ft.):

Site: Snow covered field at natural grade.

Drilling Method: 9-inch flight auger

Started: 2/6/08 3:40 PM

Drilling Contractor: Braun Intertec

Completed: 2/6/08 4:30 PM

Drill Rig: CME-750

Logged By: J.D. Lehr

DRILLING & SAMPLING

TEST RESULTS (%)

Geologic Interpretation
Economic Classification

Graphic Log	Depth (ft.)	Gravel Per Drill Action	Sample Runs	Sampled Intervals	Total + #4 Sieve	+ 1.5 Inch	1.5 Inch to 3/4 Inch	3/4 Inch to #4 Sieve	Sample Wt. (lbs)	Geologic Interpretation	Economic Classification	
TOPSOIL. Sandy, silty, black.	5.0									Loess		
916.4	5											
SILT. Brown. Lower contact based on drill action.	7.0											
914.4												
SAND & GRAVEL. Fine to coarse sand, dirty. Gravel to 2 inches.	10.0				36.3	10.4	7.4	18.5	30.9	Superior lobe outwash	27.5 % + #4	
911.4	10											
GRAVEL & SAND. Fine to very coarse sand, dirty. Gravel to 1 inch.	15.0				28.3	0.6	4.7	23.0	35.1			
906.4	15											
SAND. Fine to coarse sand. Minor gravel to 1 inch. Small sample volume.	20.0				13.8	0.0	3.5	10.3	13.2			
901.4	20											
SAND. Fine to coarse sand. Very minor gravel to 1 inch.	25.0				27.9	4.0	3.4	20.5	25.6			
896.4	25											
SAND & GRAVEL. Fine to coarse sand. Gravel to 1-3/4 inches.	30.0				32.7	0.0	4.8	27.9	25.3			
891.4	30											
SAND & GRAVEL. Fine to very coarse sand, slightly dirty. Gravel to 1-1/2 inches. Till balls present.	36.0											
885.4	35											
TILL. Clayey, gray.	40.0									Till		
881.4	40											
T.D. 40 ft.												

LOG A GNIN08 UMORE PARK DRILLING LOGS.GPJ LOG A GNIN08.GDT Printed 5/30/08

DRILLING LOG

HOLE NO. OO3600

Page 1 of 1

Property: UMore Park Property

Location: City of Rosemount & Empire Township, Dakota County, Minnesota

UTM Zone 15/NAD83/NAVD88

494,900.17 mE +/- 0.02 m 4,953,599.74 mN +/- 0.02 m

Elevation (ft.): 935.8 +/- 0.1 ft.

Ground Water Depth (ft.): Ground water not encountered

Ground Water Elevation (ft.):

Site: Snow covered plowed field at natural grade.

Drilling Method: 9-inch flight auger

Started: 2/6/08 2:30 PM

Drilling Contractor: Braun Intertec

Completed: 2/6/08 3:35 PM

Drill Rig: CME-750

Logged By: J.D. Lehr

Depth (ft.)	Graphic Log	Gravel Per Drill Action	Sample Runs	Sampled Intervals	TEST RESULTS (%)					Geologic Interpretation	Economic Classification	
					Total + #4 Sieve	+ 1.5 Inch	1.5 Inch to 3/4 Inch	3/4 Inch to #4 Sieve	Sample Wt. (lbs)			
1.0	TOPSOIL. Silty, black.										Loess	
4.0	SILT. Brown.											
5.0	SAND. Fine to very coarse sand. Minor gravel to 3/4 inch.										Superior lobe outwash	15.7% + #4
	SAND. Fine to medium sand. Very minor trace gravel to 1 inch.				3.6	0.0	0.9	2.7	29.8			
15.0	SAND. Fine to medium sand. Very minor trace gravel to 1/2 inch.											
20.0	SAND. Fine to medium sand. Very minor gravel to 1-1/4 inches.				4.6	0.0	1.8	2.8	27.7			
25.0	SAND. Fine to medium sand. Minor gravel to 1-1/2 inches.				19.8	0.6	7.4	11.8	33.7			
30.0	GRAVEL & SAND. Fine to very coarse sand, slightly dirty. Gravel to 1-3/4 inches. High percentage gravel greater than 1 inch.				46.6	2.0	7.8	36.8	37.9			
35.0	SAND & GRAVEL. Fine to very coarse sand. Gravel to 2-1/2 inches.				29.7	2.2	6.4	21.1	27.1			
40.0	SAND. Very fine to fine sand, slightly dirty. No gravel. Lower contact based on drill action.										Lacustrine sediment	
47.0	TILL. Clayey, gray, hard.										Till	
50.0	T.D. 50 ft.											

LOG A GNNN08 UMORE PARK DRILLING LOGS.GPJ LOG A GNNN08.GDT Printed 5/30/08

DRILLING LOG

HOLE NO. OO3800

Page 1 of 1

Property: UMore Park Property

Location: City of Rosemount & Empire Township, Dakota County, Minnesota

UTM Zone 15/NAD83/NAVD88

494,900.96 mE +/- 0.02 m 4,953,799.91 mN +/- 0.02 m

Elevation (ft.): 933.5 +/- 0.1 ft.

Ground Water Depth (ft.): Ground water not encountered

Ground Water Elevation (ft.):

Site: Snow covered plowed field at natural grade.

Drilling Method: 9-inch flight auger

Started: 2/6/08 1:45 PM

Drilling Contractor: Braun Intertec

Completed: 2/6/08 2:30 PM

Drill Rig: CME-750

Logged By: J.D. Lehr

DRILLING & SAMPLING

TEST RESULTS (%)

Geologic Interpretation
Economic Classification

Graphic Log	Depth (ft.)	Gravel Per Drill Action	Sample Runs	Sampled Intervals	Total + #4 Sieve	+ 1.5 Inch	1.5 Inch to 3/4 Inch	3/4 Inch to #4 Sieve	Sample Wt. (lbs)	Geologic Interpretation	Economic Classification
2.0 TOPSOIL. Silty, dark brown.	931.5									Loess	
5.0 SAND. Fine to medium sand, slightly dirty. Minor gravel to 1-1/4 inches.	928.5									Superior lobe outwash	
10.0 SAND. Fine to medium sand. Very minor trace pea gravel.	923.5										
15.0 SAND. Fine to medium sand. Very minor gravel to 1 inch.	918.5										
25.0 SAND. Fine sand. Very minor trace gravel to 1/2 inch.	908.5										
29.0 NO RECOVERY. Samples displaced while drilling interval below. Similar to 15 to 25 feet based on drill action.	904.5										
31.0	902.5									Lacustrine	
33.0 CLAY. Brown.	900.5									Older outwash	
SAND & GRAVEL. Fine to coarse sand, extremely dirty. Gravel to 1-1/2 inches. Very rocky (drill action) 31 to 33 feet. Refusal in coarse gravel at 33 feet.	T.D. 33 ft.										

No samples taken. Estimated less than 10 percent gravel from 5 to 29 feet.

LOG A GNINN08 UMORE PARK DRILLING LOGS.GPJ LOG A GNINN08.GDT Printed 5/30/08