

DRILLING LOG

HOLE NO. G0100

Page 1 of 1

Property: UMore Park Property

Location: City of Rosemount & Empire Township, Dakota County, Minnesota

UTM Zone 15/NAD83/NAVD88

491,500.71 mE +/- 0.02 m 4,950,112.87 mN +/- 0.02 m

Elevation (ft.): 948.6 +/- 0.1 ft.

Ground Water Depth (ft.): Ground water not encountered

Ground Water Elevation (ft.):

Site: Edge of field road at natural grade.

Drilling Method: 9-inch flight auger

Started: 9/24/07 3:10 PM

Drilling Contractor: WDC

Completed: 9/24/07 4:10 PM

Drill Rig: CME-85

Logged By: J.D. Lehr

Graphic Log	Depth (ft.)	Gravel Per Drill Action	Sample Runs	Sampled Intervals	TEST RESULTS (%)					Geologic Interpretation	Economic Classification
					Total + #4 Sieve	+ 1.5 Inch	1.5 Inch to 3/4 Inch	3/4 Inch to #4 Sieve	Sample Wt. (lbs)		
2.0 TOPSOIL. Silty, black.	946.6									Loess	
3.0 SILT. Brown.	945.6										
5.0 SAND. Fine to medium sand, slightly dirty. Very minor trace gravel to 1/2 inch.	943.6										
10.0 SAND. Fine to coarse sand. Very minor gravel to 1 inch.	938.6				7.9	0.0	1.4	6.5	36.9		
15.0 SAND & GRAVEL. Fine to coarse sand. Gravel to 2-1/2 inches.	933.6				35.7	7.7	6.2	21.8	31.0		
20.0 SAND. Fine to medium sand. Very minor gravel to 1-1/4 inches.	928.6				9.3	0.0	3.0	6.4	26.4	Superior lobe outwash	
25.0 SAND. Fine sand. Very minor trace gravel to 3/4 inch.	923.6				4.7	0.0	0.8	4.0	24.6		
32.0 SAND. Fine to coarse sand. Minor gravel to 1-1/4 inches.	916.6				15.1	0.5	2.9	11.7	30.4		
39.5 TILL. Clayey, dark gray. Refusal in tight material at 39.5 feet.	909.1									Till	
T.D. 39.5 ft.											

14.1 % + #4

Broke off top auger at 39.5 feet.

LOG A GNIN08 UMORE PARK DRILLING LOGS.GPJ LOG A GNIN08.GDT Printed 5/30/08

DRILLING LOG

HOLE NO. G0300

Page 1 of 1

Property: UMore Park Property

Location: City of Rosemount & Empire Township, Dakota County, Minnesota

UTM Zone 15/NAD83/NAVD88
 491,500.56 mE +/- 0.02 m 4,950,257.51 mN +/- 0.02 m
 Elevation (ft.): 948.2 +/- 0.1 ft.
 Ground Water Depth (ft.): 45.0
 Ground Water Elevation (ft.): 903.2
 Site: Edge of field road at natural grade.

Drilling Method: 9-inch flight auger Started: 9/24/07 4:20 PM
 Drilling Contractor: WDC Completed: 9/24/07 5:20 PM
 Drill Rig: CME-85 Logged By: J.D. Lehr

Depth (ft.)	Graphic Log	Gravel Per Drill Action	Sample Runs	Sampled Intervals	TEST RESULTS (%)					Geologic Interpretation	Economic Classification	
					Total + #4 Sieve	+ 1.5 Inch	1.5 Inch to 3/4 Inch	3/4 Inch to #4 Sieve	Sample Wt. (lbs)			
2.5	TOPSOIL. Silty, black.											
7.0	SILT. Brown.									Loess		
10.0	SAND. Fine to coarse sand. Very minor gravel to 1 inch.				12.5	0.0	2.5	10.0	25.8	Superior lobe outwash	10.9 % + #4	
	SAND. Fine to coarse sand. Very minor gravel to 1-1/2 inches.				14.0	2.5	1.4	10.2	26.1			
20.0	SAND. Fine to medium sand. Very minor trace gravel to 1 inch.				6.7	0.0	1.9	4.8	26.3			
25.0	SAND. Fine to medium sand. Very minor gravel to 1 inch.				5.0	0.0	1.0	4.0	26.1			
30.0	SAND. Fine to coarse sand. Minor gravel to 1-1/4 inches.				8.3	0.0	1.7	6.6	26.7			
35.0	SAND. Fine to coarse sand. Very minor gravel to 3/4 inch.				21.8	0.0	4.2	17.6	28.0			
45.0	▼ 903.2				10.9	0.0	1.1	9.7	21.1			
47.0	TILL. Sandy, reddish brown.				8.4	0.0	2.1	6.3	17.5	Till		
	T.D. 47 ft.											

LOG A GNIN08 UMORE PARK DRILLING LOGS.GPJ LOG A GNIN08.GDT Printed 5/30/08

DRILLING LOG

HOLE NO. G0400

Page 1 of 1

Property: UMore Park Property

Location: City of Rosemount & Empire Township, Dakota County, Minnesota

UTM Zone 15/NAD83/NAVD88

491,500.95 mE +/- 0.02 m 4,950,404.26 mN +/- 0.02 m

Elevation (ft.): 947.5 +/- 0.1 ft.

Ground Water Depth (ft.): Ground water not encountered

Ground Water Elevation (ft.):

Site: Grassy field road at natural grade.

Drilling Method: 9-inch flight auger

Started: 4/21/08 8:25 AM

Drilling Contractor: Braun Intertec

Completed: 4/21/08 9:20 AM

Drill Rig: CME-750

Logged By: J.D. Lehr

		DRILLING & SAMPLING					TEST RESULTS (%)				Geologic Interpretation	Economic Classification	
Graphic Log	Depth (ft.)	Gravel Per Drill Action	Sample Runs	Sampled Intervals	Total + #4 Sieve	+ 1.5 Inch	1.5 Inch to 3/4 Inch	3/4 Inch to #4 Sieve	Sample Wt. (lbs)				
1.5	TOPSOIL. Silty, black.	946.0									Loess		
3.0	SILT. Brown. Gradational with below.	944.5											
5.0	SAND. Fine to medium sand, very dirty. Very minor trace gravel to 3/4 inch.	942.5									Superior lobe outwash	26.4 % + #4	
10.0	SAND. Fine to medium sand. Very minor gravel to 1-3/4 inches.	937.5			12.6	1.6	4.6	6.4	38.3				
15.0	SAND & GRAVEL. Fine to coarse sand. Gravel to 2-1/4 inches.	932.5			25.4	10.9	5.3	9.1	33.8				
20.0	SAND & GRAVEL. Fine to very coarse sand. Gravel to 3 inches.	927.5			31.9	12.8	4.7	14.3	40.9				
25.0	SAND & GRAVEL. Medium to very coarse sand. Gravel to 2 inches.	922.5			33.4	7.9	6.7	18.8	37.4				
30.0	SAND & GRAVEL. Fine to medium sand. Gravel to 3 inches.	917.5			34.2	20.4	6.2	7.6	42.1				
35.0	SAND. Fine to medium sand. Minor gravel to 2-1/2 inches.	912.5			18.0	6.8	3.5	7.6	26.0				
40.0	SAND & GRAVEL. Fine to medium sand. Gravel to 3-1/2 inches. Very rocky (drill action) from 38 to 40 feet.	907.5			29.6	15.7	4.2	9.7	24.4				
41.0	TILL. Clayey, gray.	906.5								Till			
	T.D. 41 ft.												

LOG A GNINN08 UMORE PARK DRILLING LOGS.GPJ LOG A GNINN08.GDT Printed 5/30/08

DRILLING LOG

HOLE NO. G0500

Page 1 of 1

Property: UMore Park Property

Location: City of Rosemount & Empire Township, Dakota County, Minnesota

UTM Zone 15/NAD83/NAVD88
 491,498.28 mE +/- 0.02 m 4,950,550.21 mN +/- 0.02 m
 Elevation (ft.): 946.3 +/- 0.1 ft.
 Ground Water Depth (ft.): 62.0
 Ground Water Elevation (ft.): 884.3
 Site: Edge of field road at natural grade.

Drilling Method: 9-inch flight auger Started: 9/25/07 7:20 AM
 Drilling Contractor: WDC Completed: 9/25/07 9:10 AM
 Drill Rig: CME-85 Logged By: J.D. Lehr

Depth (ft.)	Graphic Log	Gravel Per Drill Action	Sample Runs	Sampled Intervals	TEST RESULTS (%)					Geologic Interpretation	Economic Classification	
					Total + #4 Sieve	+ 1.5 Inch	1.5 Inch to 3/4 Inch	3/4 Inch to #4 Sieve	Sample Wt. (lbs)			
2.0	TOPSOIL. Silty, black.											
4.0	SILT. Brown.									Loess		
5.0	SAND & GRAVEL. Fine to coarse sand, dirty. Gravel to 1-1/2 inches.				21.6	1.9	6.9	12.7	32.5	Superior lobe outwash	22.9% + #4	
10.0	SAND. Fine to coarse sand. Minor gravel to 1-3/4 inches.				29.7	8.2	3.3	18.2	19.3			
15.0	SAND & GRAVEL. Fine to coarse sand. Gravel to 3-1/2 inches.				8.6	1.3	1.1	6.3	24.7			
20.0	SAND. Fine to medium sand. Very minor gravel to 1-3/4 inches.				16.0	4.7	4.1	7.2	25.2			
30.0	SAND. Fine to medium sand. Minor gravel to 3 inches.				17.8	6.0	3.2	8.5	22.4			
40.0	SAND & GRAVEL. Fine to coarse sand, slightly dirty. Gravel to 1-1/2 inches.				35.5	2.9	9.5	23.0	27.9			
40.0	SAND. Fine to medium sand. Very minor trace gravel to 3/4 inch.				31.6	0.0	8.6	23.0	24.0			
65.0	T.D. 65 ft.											

LOG A GNNIN08 UMORE PARK DRILLING LOGS.GPJ LOG A GNNIN08.GDT Printed 5/30/08

DRILLING LOG

HOLE NO. G0700

Page 1 of 1

Property: UMore Park Property

Location: City of Rosemount & Empire Township, Dakota County, Minnesota

UTM Zone 15/NAD83/NAVD88

491,500.01 mE +/- 0.02 m 4,950,689.84 mN +/- 0.02 m

Elevation (ft.): 945.6 +/- 0.1 ft.

Ground Water Depth (ft.): Ground water not encountered

Ground Water Elevation (ft.):

Site: Edge of field road at natural grade.

Drilling Method: 9-inch flight auger

Started: 9/25/07 9:20 AM

Drilling Contractor: WDC

Completed: 9/25/07 10:10 AM

Drill Rig: CME-85

Logged By: J.D. Lehr

		DRILLING & SAMPLING				TEST RESULTS (%)					Geologic Interpretation	Economic Classification
Graphic Log	Depth (ft.)	Gravel Per Drill Action	Sample Runs	Sampled Intervals	Total + #4 Sieve	+ 1.5 Inch	1.5 Inch to 3/4 Inch	3/4 Inch to #4 Sieve	Sample Wt. (lbs)			
1.5 TOPSOIL. Silty, black.	944.1										Loess	
3.5 SILT. Brown.	942.1											
5.0 SAND. Fine to medium sand. Very minor trace gravel to 1-1/4 inches.	940.6										Superior lobe outwash	14.0 % + #4
10.0 SAND. Fine to coarse sand. Very minor gravel to 1-1/2 inches.	935.6				12.4	1.2	3.4	7.7	34.5			
15.0 SAND. Fine to coarse sand. Minor gravel to 1-1/2 inches.	930.6				16.0	0.0	6.2	9.8	27.2			
20.0 SAND. Fine sand. Very minor trace gravel to 1 inch.	925.6										Superior lobe outwash	
25.0 SAND. Fine sand. Very minor trace gravel to 2-1/2 inches.	920.6											
30.0 SAND. Fine to medium sand. Very minor gravel to 1-1/2 inches.	915.6											
35.0 SAND. Fine to coarse sand. Very minor gravel to 2 inches.	910.6											
40.0 SAND. Fine to coarse sand. Very minor trace gravel to 1-1/4 inches.	905.6										Lacustrine sediment	
45.0 SAND. Very fine to fine sand, dirty. No gravel.	900.6											
55.0 SAND. Very fine to fine sand. No gravel.	890.6											
T.D. 55 ft.												
Estimated less than 10 percent gravel from 15 to 40 feet.												

LOG A GNNIN08 UMORE PARK DRILLING LOGS.GPJ LOG A GNNIN08.GDT Printed 5/30/08

DRILLING LOG

HOLE NO. G0900

Page 1 of 1

Property: UMore Park Property

Location: City of Rosemount & Empire Township, Dakota County, Minnesota

UTM Zone 15/NAD83/NAVD88
 491,500.02 mE +/- 0.02 m 4,950,874.11 mN +/- 0.02 m
 Elevation (ft.): 945.7 +/- 0.1 ft.
 Ground Water Depth (ft.): 60.0
 Ground Water Elevation (ft.): 885.7
 Site: Edge of corn field north of field road at natural grade.

Drilling Method: 9-inch flight auger Started: 9/26/07 1:30 PM
 Drilling Contractor: WDC Completed: 9/26/07 4:20 PM
 Drill Rig: CME-85 Logged By: J.D. Lehr

Depth (ft.)	Graphic Log	Gravel Per Drill Action	Sample Runs	Sampled Intervals	TEST RESULTS (%)					Geologic Interpretation	Economic Classification
					Total + #4 Sieve	+ 1.5 Inch	1.5 Inch to 3/4 Inch	3/4 Inch to #4 Sieve	Sample Wt. (lbs)		
2.0	TOPSOIL. Silty, black.									Loess	
4.5	SILT. Brown.										
10.0	SAND. Fine to coarse sand. Minor gravel to 1-1/2 inches.				15.0	0.0	5.8	9.2	24.1	Superior lobe outwash	20.6 % + #4
15.0	SAND & GRAVEL. Fine to coarse sand. Gravel to 3-1/2 inches.				33.8	17.0	5.4	11.3	27.9		
20.0	SAND. Fine to coarse sand. Minor gravel to 1-3/4 inches.				20.5	4.3	5.7	10.5	24.0		
25.0	SAND. Fine to coarse sand. Minor gravel to 1 inch.				19.0	0.0	4.7	14.4	21.7		
30.0	SAND. Fine to coarse sand, slightly dirty. Minor gravel to 1 inch.				20.8	0.6	5.2	15.0	28.3		
35.0	SAND. Fine to coarse sand. Very minor gravel to 1 inch.				17.6	0.0	4.1	13.4	14.3		
40.0	SAND. Fine to medium sand. No gravel.									Lacustrine sediment	
50.0	SAND. Fine to coarse sand. Very minor trace gravel to 1 inch.										
55.0	SAND. Fine to medium sand. No gravel.										
60.0	SAND. Very fine to fine sand. No gravel.										
65.0	T.D. 65 ft.										

Small sample volume from 30 to 45 feet.

LOG A GNNIN08 UMORE PARK DRILLING LOGS.GPJ LOG A GNNIN08.GDT Printed 5/30/08

DRILLING LOG

HOLE NO. G1100

Page 1 of 1

Property: UMore Park Property

Location: City of Rosemount & Empire Township, Dakota County Minnesota

UTM Zone 15/NAD83/NAVD88
491,499.61 mE +/- 0.02 m 4,951,101.25 mN +/- 0.02 m
Elevation (ft.): 944.0 +/- 0.1 ft.
Ground Water Depth (ft.): 58.0
Ground Water Elevation (ft.): 886.0
Site: Corn stubble field at natural grade.

Drilling Method: 9-inch flight auger Started: 10/24/07 9:50 AM
Drilling Contractor: Braun Intertec Completed: 10/24/07 11:30 AM
Drill Rig: CME-750 Logged By: J.D. Lehr

Interval	Description	Elevation (ft.)	DRILLING & SAMPLING					TEST RESULTS (%)				Geologic Interpretation	Economic Classification	
			Graphic Log	Depth (ft.)	Gravel Per Drill Action	Sample Runs	Sample Intervals	Total + #4 Sieve	+ 1.5 Inch	1.5 Inch to 3/4 Inch	3/4 Inch to #4 Sieve			Sample Wt. (lbs)
2.0	TOPSOIL. Silty, black.	942.0											Loess	
5.0	SILT. Brown.	939.0												
	SAND. Fine to medium sand. No gravel.												Superior lobe outwash	
20.0	SAND. Fine to coarse sand. Very minor gravel to 1-1/2 inches.	924.0												
25.0	SAND. Fine to coarse sand. Minor gravel to 1-1/2 inches.	919.0												
35.0	SAND. Fine to medium sand. Very minor gravel to 1-1/2 inches.	909.0												
40.0	SAND. Fine to medium sand. No gravel.	904.0												
50.0	SAND. Fine sand. No gravel.	894.0												
65.0		879.0												
			T.D. 65 ft.											

Interval 25 to 35 is the only interval with decent percentage gravel. Too much sand 5 to 25 feet.

LOG A GNINN08 UMORE PARK DRILLING LOGS.GPJ LOG A GNINN08.GDT Printed 5/30/08

DRILLING LOG

HOLE NO. G1300

Page 1 of 1

Property: UMore Park Property

Location: City of Rosemount & Empire Township, Dakota County, Minnesota

UTM Zone 15/NAD83/NAVD88

491,500.34 mE +/- 0.02 m 4,951,300.11 mN +/- 0.02 m

Elevation (ft.): 948.1 +/- 0.1 ft.

Ground Water Depth (ft.): 62.0

Ground Water Elevation (ft.): 886.1

Site: Corn stubble field at natural grade.

Drilling Method: 9-inch flight auger

Started: 10/24/07 12:20 PM

Drilling Contractor: Braun Intertec

Completed: 10/24/07 1:40 PM

Drill Rig: CME-750

Logged By: J.D. Lehr

DRILLING & SAMPLING

TEST RESULTS (%)

Geologic Interpretation
Economic Classification

Graphic Log	Depth (ft.)	Gravel Per Drill Action	Sample Runs	Sampled Intervals	Total + #4 Sieve	+ 1.5 Inch	1.5 Inch to 3/4 Inch	3/4 Inch to #4 Sieve	Sample Wt. (lbs)	Geologic Interpretation	Economic Classification
1.0 TOPSOIL. Silty, black.	947.1									Loess	
2.0 SILT. Brown.	946.1									Superior lobe outwash	
5.0 SAND & GRAVEL. Fine to medium sand, slightly dirty. Gravel to 2-1/2 inches.	943.1				31.4	9.4	8.5	13.4	21.1		
SAND. Fine to medium sand. Very minor trace gravel to 1 inch.											
20.0	928.1										
SAND. Fine to coarse sand. Very minor gravel to 1-1/2 inches.	923.1										
SAND. Fine to medium sand. No gravel.	918.1										
SAND. Fine to medium sand. Very minor trace gravel to 1 inch.	913.1										
SAND. Fine to coarse sand. Minor gravel to 1 inch.	903.1										
SAND. Fine to coarse sand. Very minor gravel to 2-1/2 inches.	898.1										
SAND. Fine to coarse sand. Very minor trace gravel to 3-1/2 inches.	893.1										
SAND. Fine to coarse sand. Very minor gravel to 2-1/2 inches.	888.1										
SAND. Fine to medium sand. No gravel. ▼	883.1										
T.D. 65 ft.	65										

No Samples taken. Only decent gravel percentage is from 35 to 45 feet. Higher percentage gravel indicated by drill action from 45 to 60 feet than reflected in samples.

LOG A GNINN08 UMORE PARK DRILLING LOGS.GPJ LOG A GNINN08.GDT Printed 5/30/08

DRILLING LOG

HOLE NO. G1500

Page 1 of 1

Property: UMore Park Property

Location: City of Rosemount & Empire Township, Dakota County, Minnesota

UTM Zone 15/NAD83/NAVD88

491,500.14 mE +/- 0.02 m 4,951,493.53 mN +/- 0.02 m

Elevation (ft.): 952.5 +/- 0.1 ft.

Ground Water Depth (ft.): Ground water not encountered

Ground Water Elevation (ft.):

Site: Edge of field road at natural grade.

Drilling Method: 9-inch flight auger

Started: 9/21/07 2:45 PM

Drilling Contractor: WDC

Completed: 9/21/07 4:10 PM

Drill Rig: CME-85

Logged By: J.D. Lehr

		DRILLING & SAMPLING					TEST RESULTS (%)				Geologic Interpretation	Economic Classification
Graphic Log	Depth (ft.)	Gravel Per Drill Action	Sample Runs	Sampled Intervals	Total + #4 Sieve	+ 1.5 Inch	1.5 Inch to 3/4 Inch	3/4 Inch to #4 Sieve	Sample Wt. (lbs)			
1.5	TOPSOIL. Silty, black.	951.0									Loess	
3.5	SILT. Brown.	949.0										
5.0	SAND. Fine to medium sand, slightly dirty. No gravel.	947.5									Superior lobe outwash	13.3% + #4
10.0	SAND. Fine sand: Very minor trace gravel to 1-1/2 inches.	942.5				3.9	0.5	0.9	2.5	33.7		
15.0	SAND & GRAVEL. Fine to coarse sand. Gravel to 3-1/2 inches.	937.5				29.7	8.0	6.6	15.0	27.0		
20.0	SAND. Fine sand. Very minor trace gravel to 3/4 inch.	932.5				2.3	0.0	0.3	2.0	22.4		
25.0	SAND. Fine to medium sand. Very minor gravel to 2 inches.	927.5				7.8	1.7	1.6	4.5	25.0		
30.0	SAND. Fine to coarse sand. Very minor gravel to 1-1/2 inches.	922.5				14.9	0.0	4.5	10.4	32.0		
35.0	SAND. Fine to medium sand. Very minor trace gravel to 1 inch.					4.3	0.0	0.5	3.8	24.7		
40.0	SAND. Fine to medium sand. Very minor trace gravel to 1-1/2 inches.	912.5				2.6	0.0	0.7	2.0	20.8		
45.0	SAND. Fine to medium sand. Very minor trace gravel to 1-1/2 inches.	907.5				4.4	0.0	2.0	2.4	24.9		
50.0	SAND. Fine to coarse sand. Minor gravel to 1-1/2 inches.	902.5				18.6	0.5	4.0	14.1	33.9		
55.0	SAND & GRAVEL. Fine to coarse sand. Gravel to 1-1/2 inches.	897.5				25.7	1.2	8.3	16.2	30.6		
60.0	SAND. Fine to medium sand. Minor gravel to 1-3/4 inches.	892.5				21.2	6.8	4.9	9.5	21.8		
65.0	SAND & GRAVEL. Fine to coarse sand. Gravel to 4 inches.	887.5				26.8	11.0	1.9	13.9	29.6		
	T.D. 65 ft.											

LOG A GNNIN08 UMORE PARK DRILLING LOGS.GPJ LOG A GNNIN08.GDT Printed 5/30/08

DRILLING LOG

HOLE NO. G1700

Page 1 of 1

Property: UMore Park Property

Location: City of Rosemount & Empire Township, Dakota County, Minnesota

UTM Zone 15/NAD83/NAVD88

491,499.53 mE +/- 0.02 m 4,951,699.74 mN +/- 0.02 m

Elevation (ft.): 951.4 +/- 0.1 ft.

Ground Water Depth (ft.): Ground water not encountered

Ground Water Elevation (ft.):

Site: Snow covered plowed field at natural grade.

Drilling Method: 9-inch flight auger

Started: 12/12/07 2:00 PM

Drilling Contractor: Braun Intertec

Completed: 12/12/07 3:50 PM

Drill Rig: CME-750

Logged By: J.D. Lehr

Depth (ft.)	Graphic Log	Gravel Per Drill Action	Sample Runs	Sampled Intervals	TEST RESULTS (%)					Geologic Interpretation	Economic Classification	
					Total + #4 Sieve	+ 1.5 Inch	1.5 Inch to 3/4 Inch	3/4 Inch to #4 Sieve	Sample Wt. (lbs)			
1.5	TOPSOIL. Silty, black.										Loess	
5.0	SILT. Brown.											
10.0	SAND. Fine sand. Very minor trace pea gravel.				2.1	0.0	0.2	1.8	24.4	Superior lobe outwash	18.1 % + #4	
15.0	SAND. Fine to medium sand. Very minor gravel to 1-1/2 inches.				8.5	2.4	1.6	4.4	26.1			
20.0	SAND. Fine to coarse sand. Minor gravel to 1-1/4 inches.				16.2	0.0	4.9	11.3	30.1			
25.0	SAND. Fine to medium sand. Very minor trace gravel to 1-1/4 inches.				4.9	0.7	0.7	3.5	26.8			
30.0	SAND. Fine to coarse sand. Minor gravel to 3 inches.				21.5	8.8	4.5	8.3	39.4			
35.0	SAND. Fine to coarse sand. Minor gravel to 2-1/2 inches.				19.3	5.0	4.2	10.1	29.6			
40.0	SAND. Fine to very coarse sand. Minor gravel to 2-1/2 inches.				24.0	4.1	3.9	16.0	39.5			
45.0	SAND & GRAVEL. Fine to very coarse sand. Gravel to 3 inches.				27.4	13.4	3.1	10.9	36.0			
50.0	SAND & GRAVEL. Fine to coarse sand. Gravel to 1-3/4 inches.				28.5	1.3	5.3	22.0	37.0			
55.0	SAND. Fine to coarse sand. Minor gravel to 3-1/2 inches.				26.4	2.1	3.5	20.7	33.4			
60.0	SAND. Fine to medium sand. Very minor gravel to 1-1/4 inches.				20.3	5.2	2.7	12.5	31.9			
65.0	T.D. 65 ft.											

LOG A GNNIN08 UMORE PARK DRILLING LOGS.GPJ LOG A GNNIN08.GDT Printed 5/30/08

DRILLING LOG

HOLE NO. G1900

Page 1 of 1

Property: UMore Park Property

Location: City of Rosemount & Empire Township, Dakota County County, Minnesota

UTM Zone 15/NAD83/NAVD88

491,500.11 mE +/- 0.02 m 4,951,900.28 mN +/- 0.02 m

Elevation (ft.): 952.1 +/- 0.1 ft.

Ground Water Depth (ft.): Ground water not encountered

Ground Water Elevation (ft.):

Site: Snow covered plowed field at natural grade.

Drilling Method: 9-inch flight auger

Started: 12/12/07 10:55 AM

Drilling Contractor: Braun Intertec

Completed: 12/12/07 1:50 PM

Drill Rig: CME-750

Logged By: J.D. Lehr

DRILLING & SAMPLING

TEST RESULTS (%)

Geologic Interpretation

Economic Classification

Graphic Log	Depth (ft.)	Gravel Per Drill Action	Sample Runs	Sampled Intervals	Total + #4 Sieve	+ 1.5 Inch	1.5 Inch to 3/4 Inch	3/4 Inch to #4 Sieve	Sample Wt. (lbs)	Geologic Interpretation	Economic Classification
1.5 TOPSOIL. Silty, black.	950.6									Loess	
4.5 SILT. Brown.	947.6										
5.0 SAND. Fine sand. Very minor trace gravel to 3/4 inch.	947.1				18.6	1.7	5.5	11.5	30.7	Superior lobe outwash	16.5 % + #4
10.0 SAND. Fine to coarse sand. Minor gravel to 1-1/4 inches.	942.1				10.0	1.8	1.6	6.6	26.9		
15.0 SAND. Fine to medium sand. Very minor gravel to 2-1/2 inches.	937.1				10.1	0.0	3.3	6.7	26.3		
20.0 SAND. Fine to medium sand. Very minor gravel to 1-1/4 inches.	932.1				8.2	1.6	1.9	4.6	25.6		
25.0 SAND. Fine to medium sand. Very minor gravel to 1-3/4 inches.	927.1				12.0	2.4	3.3	6.3	32.7		
35.0 SAND. Fine to coarse sand. Very minor gravel to 1-1/2 inches.	917.1				8.5	1.8	1.3	5.5	29.3		
40.0 SAND. Fine to medium sand. Very minor gravel to 2-1/2 inches.	912.1				14.8	7.9	2.3	4.6	31.1		
45.0 SAND. Fine to medium sand. Minor gravel to 2-1/2 inches.	907.1				20.1	7.9	3.8	8.3	26.4		
50.0 SAND. Fine to coarse sand. Very minor gravel to 1-1/2 inches.	902.1				18.7	0.0	8.3	10.3	28.6		
55.0 SAND & GRAVEL. Fine to coarse sand. Gravel to 6 inches. Very rocky (drill action) from 50 to 54 feet.	897.1				33.9	23.1	2.7	8.1	43.9		
60.0 SAND & GRAVEL. Fine to coarse sand. Gravel to 3 inches.	892.1				26.5	5.4	3.8	17.3	32.5		
T.D. 60 ft.											

Broke top auger at 52 feet. Pulled up 2 feet and re-drilled 50 to 52 feet. Total depth only 60 feet - no spare augers.

LOG A GNNIN08 UMORE PARK DRILLING LOGS.GPJ LOG A GNNIN08.GDT Printed 5/30/08

DRILLING LOG

HOLE NO. G2000

Page 1 of 1

Property: UMore Park Property

Location: City of Rosemount & Empire Township, Dakota County, Minnesota

UTM Zone 15/NAD83/NAVD88

491,499.05 mE +/- 0.02 m 4,951,971.73 mN +/- 0.02 m

Elevation (ft.): 953.3 +/- 0.1 ft.

Ground Water Depth (ft.): Ground water not encountered

Ground Water Elevation (ft.):

Site: Edge of plowed field at natural grade.

Drilling Method: 9-inch flight auger

Started: 4/14/08 2:35 PM

Drilling Contractor: Braun Intertec

Completed: 4/14/08 4:10 PM

Drill Rig: CME-750

Logged By: J.D. Lehr

		DRILLING & SAMPLING					TEST RESULTS (%)				Geologic Interpretation	Economic Classification
Graphic Log	Depth (ft.)	Gravel Per Drill Action	Sample Runs	Sampled Intervals	Total + #4 Sieve	+ 1.5 Inch	1.5 Inch to 3/4 Inch	3/4 Inch to #4 Sieve	Sample Wt. (lbs)			
2.0	TOPSOIL. Silty, black.	951.3									Loess	
4.0	SILT. Gravelly from 3 to 4 feet, brown.	949.3										
5.0	SAND. Fine to coarse sand, slightly dirty. Minor gravel to 1-1/4 inches.	948.3									Superior lobe outwash	22.0 % + #4
10.0	SAND. Fine to medium sand. Very minor gravel to 3/4 inch.	943.3				11.3	0.9	4.1	6.3	33.6		
15.0	SAND. Fine to medium sand. Very minor gravel to 1-1/4 inches.	938.3										
20.0	SAND. Fine to medium sand. Minor gravel to 2-1/2 inches.	933.3				19.8	7.2	4.0	8.6	32.4		
30.0	SAND. Fine to coarse sand. Very minor gravel to 1 inch.	923.3				9.7	0.0	3.7	6.0	30.0		
35.0	SAND. Fine to coarse sand. Very minor gravel to 1-1/2 inches.	918.3										
40.0	SAND & GRAVEL. Fine to coarse sand. Gravel to 1-1/4 inches.	913.3				29.9	1.8	14.0	14.1	34.2		
45.0	SAND & GRAVEL. Fine to very coarse sand. Gravel to 1-3/4 inches.	908.3				33.1	5.2	8.3	19.6	41.4		
50.0	GRAVEL & SAND. Fine to very coarse sand. Gravel to 1-1/2 inches.	903.3				44.6	1.1	10.2	33.3	34.5		
55.0	SAND & GRAVEL. Fine to very coarse sand. Gravel to 1-1/4 inches.	898.3				28.7	0.0	5.3	23.4	40.6		
60.0	SAND & GRAVEL. Fine to very coarse sand. Gravel to 2-1/2 inches.	893.3				38.1	6.3	8.2	23.6	44.0		
65.0	SAND. Fine to very coarse sand. Very minor gravel to 1 inch.	888.3				10.2	0.0	1.8	8.4	28.3		
	T.D. 65 ft.											

LOG A GNNIN08 UMORE PARK DRILLING LOGS.GPJ LOG A GNNIN08.GDT Printed 5/30/08

DRILLING LOG

HOLE NO. G2100

Page 1 of 1

Property: UMore Park Property

Location: City of Rosemount & Empire Township, Dakota County, Minnesota

UTM Zone 15/NAD83/NAVD88

491,500.60 mE +/- 0.02 m 4,952,096.46 mN +/- 0.02 m

Elevation (ft.): 953.2 +/- 0.1 ft.

Ground Water Depth (ft.): Ground water not encountered

Ground Water Elevation (ft.):

Site: On snow covered grassy field road adjacent to corn stubble field at natural grade.

Drilling Method: 9-inch flight auger

Started: 12/12/07 9:25 AM

Drilling Contractor: Braun Intertec

Completed: 12/12/07 10:50 AM

Drill Rig: CME-750

Logged By: J.D. Lehr

DRILLING & SAMPLING

TEST RESULTS (%)

Geologic Interpretation
Economic Classification

Graphic Log	Depth (ft.)	Gravel Per Drill Action	Sample Runs	Sampled Intervals	Total + #4 Sieve	+ 1.5 Inch	1.5 Inch to 3/4 Inch	3/4 Inch to #4 Sieve	Sample Wt. (lbs)	Geologic Interpretation	Economic Classification
1.0 TOPSOIL. Silty, black.	952.2									Loess	
4.0 SILT. Brown.	949.2										
5.0 SAND. Fine sand. Very minor trace gravel to 1 inch.	948.2									Superior lobe outwash	
10.0 SAND. Fine to medium sand. No gravel.	943.2										
15.0 SAND. Fine to medium sand. Very minor gravel to 3 inches.	938.2										
20.0 SAND. Fine to medium sand. Very minor gravel to 1-1/2 inches.	933.2										
25.0 SAND. Fine sand. No gravel.	928.2										
30.0 SAND. Fine to coarse sand. Very minor trace gravel to 1 inch.	923.2										
35.0 SAND. Fine to coarse sand. Very minor gravel to 1-1/2 inches.	918.2										
40.0 SAND. Very fine to fine sand. No gravel.	913.2										
45.0 SAND. Fine to coarse sand. Very minor gravel to 1-1/4 inches.	908.2										
50.0 SAND & GRAVEL. Fine to coarse sand. Gravel to 1-3/4 inches.	903.2										
55.0 SAND. Fine to coarse sand. Minor gravel to 2 inches.	898.2										
60.0 SAND. Fine sand. Very minor gravel to 1-3/4 inches.	893.2										
65.0 SAND. Fine sand. Very minor gravel to 1-3/4 inches.	888.2										

No samples taken. Estimated less than 5 percent gravel from 4 to 50 feet. 50 to 60 feet is decent material.

T.D.
65 ft.

LOG A GNNIN08 UMORE PARK DRILLING LOGS.GPJ LOG A GNNIN08.GDT Printed 5/30/08

DRILLING LOG

HOLE NO. G2300

Page 1 of 1

Property: UMore Park Property

Location: City of Rosemount & Empire Township, Dakota County, Minnesota

UTM Zone 15/NAD83/NAVD88

491,500.27 mE +/- 0.02 m 4,952,299.13 mN +/- 0.02 m

Elevation (ft.): 951.7 +/- 0.1 ft.

Ground Water Depth (ft.): Ground water not encountered

Ground Water Elevation (ft.):

Site: Snow covered soybean stubble field at natural grade.

Drilling Method: 9-inch flight auger

Started: 12/12/07 7:30 AM

Drilling Contractor: Braun Intertec

Completed: 12/12/07 9:15 AM

Drill Rig: CME-750

Logged By: J.D. Lehr

		DRILLING & SAMPLING				TEST RESULTS (%)					Geologic Interpretation	Economic Classification
Graphic Log	Depth (ft.)	Gravel Per Drill Action	Sample Runs	Sampled Intervals	Total + #4 Sieve	+ 1.5 Inch	1.5 Inch to 3/4 Inch	3/4 Inch to #4 Sieve	Sample Wt. (lbs)			
1.5	TOPSOIL. Silty, black.	950.2									Loess	
3.0	SILT. Brown.	948.7										
5.0	SAND. Fine sand, dirty. No gravel.	946.7									Superior lobe outwash	19.9 % + #4
10.0	SAND. Fine to medium sand, slightly dirty. Very minor gravel to 1 inch.	941.7				5.7	0.0	1.0	4.7	23.1		
15.0	SAND. Fine sand. No gravel.	936.7										
20.0	SAND. Fine to coarse sand. Very minor gravel to 2 inches.	931.7				8.5	2.2	1.6	4.6	24.9		
25.0	SAND & GRAVEL. Fine to coarse sand. Gravel to 2-1/2 inches.	926.7				30.1	7.1	7.3	15.7	32.8		
30.0	SAND. Fine sand. Very minor trace gravel to 3/4 inch.	921.7				4.3	0.0	0.3	4.0	21.1		
35.0	SAND. Fine to medium sand. Very minor gravel to 2 inches.	916.7				10.0	3.1	2.1	4.8	25.5		
40.0	SAND & GRAVEL. Fine to coarse sand. Gravel to 3 inches.	911.7				29.9	5.7	7.8	16.4	33.2		
45.0	GRAVEL & SAND. Fine to very coarse sand, slightly dirty. Gravel to 2-1/2 inches.	906.7				44.6	5.1	15.5	23.9	42.5		
50.0	SAND & GRAVEL. Fine to medium sand. Gravel to 4 inches.	901.7				25.1	12.3	6.1	6.8	25.2		
55.0	SAND. Fine to medium sand. Minor gravel to 4 inches.	896.7				23.2	11.9	4.3	7.0	32.7		
60.0	SAND. Fine to medium sand. Minor gravel to 3-1/2 inches.	891.7				24.5	11.2	5.8	7.6	30.2		
65.0	SAND & GRAVEL. Fine to coarse sand. Gravel to 4 inches.	886.7				27.8	14.5	5.3	8.0	32.0		
	T.D. 65 ft.											

LOG A GNIN08 UMORE PARK DRILLING LOGS.GPJ LOG A GNIN08.GDT Printed 5/30/08

DRILLING LOG

HOLE NO. G2500

Page 1 of 1

Property: UMore Park Property

Location: City of Rosemount & Empire Township, Dakota County, Minnesota

UTM Zone 15/NAD83/NAVD88

491,500.89 mE +/- 0.02 m 4,952,500.25 mN +/- 0.02 m

Elevation (ft.): 949.4 +/- 0.1 ft.

Ground Water Depth (ft.): Ground water not encountered

Ground Water Elevation (ft.):

Site: Snow covered plowed field at natural grade.

Drilling Method: 9-inch flight auger

Started: 12/11/07 2:05 PM

Drilling Contractor: Braun Intertec

Completed: 12/11/07 3:55 PM

Drill Rig: CME-750

Logged By: J.D. Lehr

		DRILLING & SAMPLING					TEST RESULTS (%)				Geologic Interpretation	Economic Classification
Graphic Log	Depth (ft.)	Gravel Per Drill Action	Sample Runs	Sampled Intervals	Total + #4 Sieve	+ 1.5 Inch	1.5 Inch to 3/4 Inch	3/4 Inch to #4 Sieve	Sample Wt. (lbs)			
1.5	TOPSOIL. Silty, black.	947.9									Loess	
3.0	SILT. Brown.	946.4										
5.0	SAND. Fine to coarse sand. Very minor gravel to 1-1/2 inches.	944.4										
10.0	SAND. Fine to medium sand. Minor gravel to 2 inches.	939.4				17.6	3.6	6.1	7.9	36.7		
	SAND. Fine to medium sand. Very minor gravel to 2 inches.					13.5	4.2	3.7	5.5	25.9		
						13.2	3.5	3.1	6.6	25.6		
20.0	SAND & GRAVEL. Fine to coarse sand. Gravel to 2-1/2 inches.	929.4				31.7	9.5	10.2	12.0	33.6		
25.0	SAND. Fine sand. Very minor gravel to 1-1/2 inches.	924.4				12.3	2.7	3.0	6.6	23.6		
30.0	SAND. Fine sand. Very minor trace gravel to 3/4 inch.	919.4				1.4	0.0	0.2	1.2	22.0		
35.0	SAND. Fine to medium sand. Very minor gravel to 1-1/4 inches.	914.4				6.2	0.0	1.6	4.6	22.9	Superior lobe outwash	
40.0	SAND. Fine to coarse sand. Minor gravel to 1-3/4 inches.	909.4				21.8	6.2	3.4	12.2	20.6		
45.0	SAND. Fine to coarse sand. Minor gravel to 1-1/4 inches.	904.4				21.8	0.5	5.2	16.0	31.2		
50.0	SAND & GRAVEL. Fine to coarse sand. Gravel to 2-1/2 inches.	899.4				27.0	1.0	7.0	19.1	35.4		
55.0						29.9	6.3	7.5	16.2	36.4		
60.0	SAND. Fine to coarse sand. Minor gravel to 3 inches.	889.4				17.4	4.3	5.6	7.5	31.4		
65.0		884.4										
	T.D. 65 ft.											

17.8% + #4

LOG A GNNIN08 UMORE PARK DRILLING LOGS.GPJ LOG A GNNIN08.GDT Printed 5/30/08

DRILLING LOG

HOLE NO. G2700

Page 1 of 1

Property: UMore Park Property

Location: City of Rosemount & Empire Township, Dakota County, Minnesota

UTM Zone 15/NAD83/NAVD88
 491,500.65 mE +/- 0.02 m 4,952,701.23 mN +/- 0.02 m
 Elevation (ft.): 941.8 +/- 0.1 ft.
 Ground Water Depth (ft.): 61.0
 Ground Water Elevation (ft.): 880.8
 Site: Snow covered corn stubble field at natural grade.

Drilling Method: 9-inch flight auger Started: 12/11/07 12:15 PM
 Drilling Contractor: Braun Intertec Completed: 12/11/07 1:55 PM
 Drill Rig: CME-750 Logged By: J.D. Lehr

Depth (ft.)	Graphic Log	Gravel Per Drill Action	Sample Runs	Sampled Intervals	TEST RESULTS (%)					Geologic Interpretation	Economic Classification	
					Total + #4 Sieve	+ 1.5 Inch	1.5 Inch to 3/4 Inch	3/4 Inch to #4 Sieve	Sample Wt. (lbs)			
2.0	TOPSOIL. Silty, black.											
7.0	SILT. Brown. Lower contact based on drill action.									Loess		
10.0	SAND & GRAVEL. Fine to coarse sand, slightly dirty. Gravel to 2 inches.				25.2	1.5	5.9	17.8	25.2	Superior lobe outwash	13.4 % + #4	
15.0	SAND. Fine to medium sand. Very minor gravel to 2-1/2 inches.				14.4	3.8	3.1	7.5	27.0			
20.0	SAND. Fine to medium sand. Very minor gravel to 3 inches.				14.2	7.3	1.0	5.9	27.1			
25.0	SAND. Fine to medium sand. Very minor gravel to 1-1/2 inches.				7.5	0.0	3.6	4.0	23.8			
35.0	SAND. Fine to coarse sand. Very minor gravel to 1 inch.				6.1	0.0	1.1	5.0	28.6			
40.0	SAND. Fine to medium sand. Very minor trace gravel to 1 inch.				3.2	0.0	0.2	3.0	23.3			
45.0	SAND. Very fine to fine sand. No gravel.											
50.0	SAND. Fine to medium sand. Very minor gravel to 1-1/4 inches.				9.3	0.0	1.8	7.6	17.3			
55.0	SAND & GRAVEL. Fine to coarse sand. Gravel to 1-1/2 inches.				27.8	1.0	9.0	17.8	24.8			
60.0	SAND & GRAVEL. Fine to very coarse sand. Gravel to 2 inches.				28.0	2.8	5.0	20.2	27.6			
65.0	SAND. Fine to very coarse sand. Minor gravel to 2 inches.				20.3	2.1	4.5	13.6	24.4			
	T.D. 65 ft.											

LOG A GNNIN08 UMORE PARK DRILLING LOGS.GPJ LOG A GNNIN08.GDT Printed 5/30/08

DRILLING LOG

HOLE NO. G2900

Page 1 of 1

Property: UMore Park Property

Location: City of Rosemount & Empire Township, Dakota County, Minnesota

UTM Zone 15/NAD83/NAVD88

491,501.82 mE +/- 0.02 m 4,952,898.38 mN +/- 0.02 m

Elevation (ft.): 950.9 +/- 0.1 ft.

Ground Water Depth (ft.): Ground water not encountered

Ground Water Elevation (ft.):

Site: Snow covered corn stubble field at natural grade.

Drilling Method: 9-inch flight auger

Started: 12/11/07 9:55 AM

Drilling Contractor: Braun Intertec

Completed: 12/11/07 11:30 AM

Drill Rig: CME-750

Logged By: J.D. Lehr

DRILLING & SAMPLING

TEST RESULTS (%)

Geologic Interpretation
Economic Classification

Graphic Log	Depth (ft.)	Gravel Per Drill Action	Sample Runs	Sampled Intervals	Total + #4 Sieve	+ 1.5 Inch	1.5 Inch to 3/4 Inch	3/4 Inch to #4 Sieve	Sample Wt. (lbs)	Geologic Interpretation	Economic Classification
1.5 TOPSOIL. Silty, black.	949.4									Loess	
2.5 SILT. Brown.	948.4									Superior lobe outwash	16.0 % + #4
5.0 SAND & GRAVEL. Fine to coarse sand. Gravel to 2 inches.	945.9				29.4	3.5	12.3	13.6	22.2		
10.0 SAND. Fine to medium sand. Very minor gravel to 1-3/4 inches.	940.9				13.3	1.6	3.6	8.2	33.0		
15.0 SAND. Fine to medium sand. Minor gravel to 2 inches.	935.9				16.6	7.5	2.5	6.6	29.1		
20.0 SAND. Fine to medium sand. Very minor gravel to 2 inches.	930.9				8.0	1.9	2.3	3.8	25.7		
25.0 SAND. Fine to coarse sand. Minor gravel to 1-3/4 inches.	925.9				21.6	2.6	8.4	10.6	35.7		
30.0 SAND. Fine to medium sand. Very minor gravel to 1 inch.	920.9				7.2	0.0	1.6	5.6	23.9		
35.0 SAND & GRAVEL. Fine to medium sand. Gravel to 1-3/4 inches.	915.9				27.4	10.3	8.5	8.6	23.8		
40.0 SAND. Fine sand. Very minor gravel to 2 inches.	910.9				6.3	2.6	0.8	2.9	27.2		
45.0 SAND. Very fine to fine sand. No gravel.	905.9										
50.0 SAND. Fine to medium sand. Very minor gravel to 1 inch.	900.9				6.1	0.0	0.5	5.6	22.1		
55.0 SAND. Fine to coarse sand. Very minor gravel to 1-1/2 inches.	895.9				14.1	0.9	2.3	10.9	25.5		
60.0 SAND. Fine to coarse sand. Minor gravel to 1-3/4 inches.	890.9				19.4	2.7	4.9	11.9	25.4		
65.0 SAND & GRAVEL. Fine to very coarse sand. Gravel to 3 inches. High percentage gravel greater than 1-1/2 inches.	885.9				38.7	14.8	5.8	18.2	41.7		
T.D. 65 ft.											

LOG A GNNIN08 UMORE PARK DRILLING LOGS.GPJ LOG A GNNIN08.GDT Printed 5/30/08

DRILLING LOG

HOLE NO. G3100

Page 1 of 1

Property: UMore Park Property

Location: City of Rosemount & Empire Township, Dakota County, Minnesota

UTM Zone 15/NAD83/NAVD88

491,498.99 mE +/- 0.02 m 4,953,100.02 mN +/- 0.02 m

Elevation (ft.): 949.7 +/- 0.1 ft.

Ground Water Depth (ft.): Ground water not encountered

Ground Water Elevation (ft.):

Site: Snow covered corn stubble field at natural grade.

Drilling Method: 9-inch flight auger

Started: 12/11/07 8:10 AM

Drilling Contractor: Braun Intertec

Completed: 12/11/07 9:45 AM

Drill Rig: CME-750

Logged By: J.D. Lehr

		DRILLING & SAMPLING				TEST RESULTS (%)				Geologic Interpretation	Economic Classification	
Graphic Log	Depth (ft.)	Gravel Per Drill Action	Sample Runs	Sampled Intervals	Total + #4 Sieve	+ 1.5 Inch	1.5 Inch to 3/4 Inch	3/4 Inch to #4 Sieve	Sample Wt. (lbs)			
1.5	TOPSOIL. Silty, black.	948.2									Loess	
3.5	SILT. Brown.	946.2										
5.0	SAND & GRAVEL. Fine to coarse sand. Gravel to 1-1/2 inches.	944.7									Superior lobe outwash	20.8 % + #4
10.0	SAND. Fine to medium sand. Very minor gravel to 2-1/2 inches.	939.7				14.7	2.0	4.4	8.2	35.9		
15.0	SAND. Fine to medium sand. Very minor gravel to 3-1/2 inches.	934.7				13.5	5.2	2.8	5.5	34.9		
20.0	SAND. Fine to coarse sand. Minor gravel to 1-3/4 inches.					19.1	4.9	4.3	9.9	39.1		
25.0	SAND & GRAVEL. Fine to coarse sand. Gravel to 2 inches.	924.7				22.0	4.9	5.8	11.2	36.2		
30.0	SAND & GRAVEL. Fine to coarse sand. Gravel to 2 inches.	919.7				26.9	7.9	8.5	10.5	34.4		
35.0	SAND. Fine to very coarse sand. Minor gravel to 1-1/4 inches. Small sample volume - some of sample was displaced while drilling sand below.	914.7				23.6	0.0	6.0	17.6	32.3		
40.0	SAND & GRAVEL. Fine to very coarse sand. Gravel to 1-1/4 inches. Small sample volume - some of sample was displaced while drilling sand below.	909.7				29.6	3.1	5.5	21.1	15.1		
45.0	SAND. Very fine to fine sand. Very minor trace gravel to 3/4 inch.	904.7				2.9	0.0	0.4	2.6	21.4		
50.0	SAND. Fine to medium sand. Minor gravel to 1 inch.	899.7				16.0	0.0	2.3	13.7	20.8		
55.0	SAND. Fine to medium sand. Minor gravel to 3 inches. Very rocky (drill action) from 51 to 55 feet.	894.7				20.8	6.3	3.0	11.5	27.8		
60.0	SAND & GRAVEL. Fine to medium sand. Gravel to 5 inches.	889.7				25.5	10.5	4.1	10.9	32.1		
65.0	SAND & GRAVEL. Fine to coarse sand. Gravel to 2-3/4 inches.	884.7				36.5	7.7	10.4	18.4	26.3		
	T.D. 65 ft.											

LOG-A-GNINN08-UMORE PARK DRILLING LOGS.GPJ LOG-A-GNINN08.GDT Printed 5/30/08

DRILLING LOG

HOLE NO. G3100A

Page 1 of 1

Property: UMore Park Property

Location: City of Rosemount & Empire Township, Dakota County, Minnesota

UTM Zone 15/NAD83/NAVD88

mE +/- m mN +/- m

Elevation (ft.): +/- ft.

Ground Water Depth (ft.): Ground water not encountered

Ground Water Elevation (ft.):

Site: Snow covered corn stubble field at natural grade.

Drilling Method: 9-inch flight auger

Started: 12/11/07 7:30 AM

Drilling Contractor: Braun Intertec

Completed: 12/11/07 8:10 AM

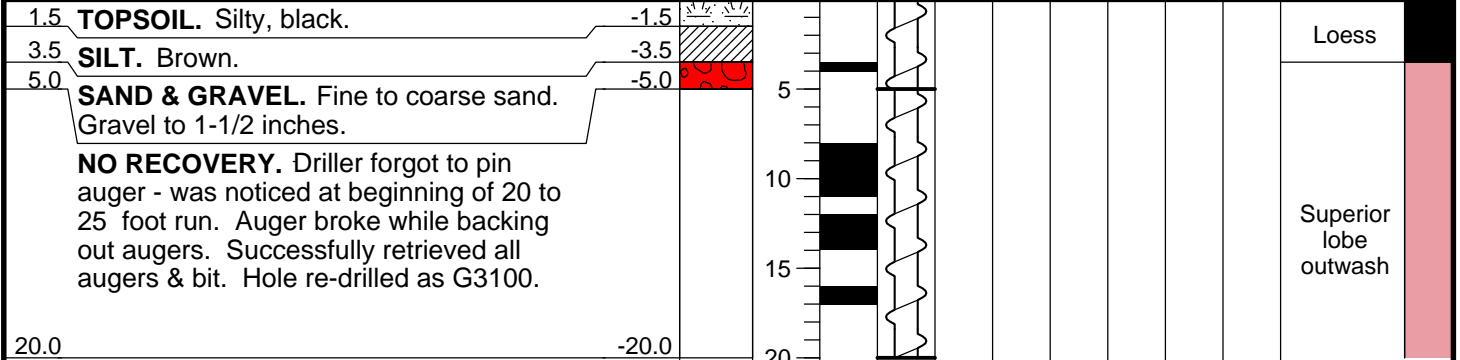
Drill Rig: CME-750

Logged By: J.D. Lehr

DRILLING & SAMPLING

TEST RESULTS (%)

Geologic Interpretation
Economic Classification



20.0 -20.0
T.D. 20 ft.
No samples taken.

DRILLING LOG

HOLE NO. G3300

Page 1 of 1

Property: UMore Park Property

Location: City of Rosemount & Empire Township, Dakota County, Minnesota

UTM Zone 15/NAD83/NAVD88

491,500.44 mE +/- 0.02 m 4,953,299.96 mN +/- 0.02 m

Elevation (ft.): 955.3 +/- 0.1 ft.

Ground Water Depth (ft.): Ground water not encountered

Ground Water Elevation (ft.):

Site: Snow covered corn stubble field at natural grade.

Drilling Method: 9-inch flight auger

Started: 12/10/07 1:55 PM

Drilling Contractor: Braun Intertec

Completed: 12/10/07 3:30 PM

Drill Rig: CME-750

Logged By: J.D. Lehr

		DRILLING & SAMPLING					TEST RESULTS (%)					Geologic Interpretation	Economic Classification
Graphic Log	Depth (ft.)	Gravel Per Drill Action	Sample Runs	Sampled Intervals	Total + #4 Sieve	+ 1.5 Inch	1.5 Inch to 3/4 Inch	3/4 Inch to #4 Sieve	Sample Wt. (lbs)				
1.0	TOPSOIL. Silty, black.	954.3										Loess	
3.5	SILT. Brown.	951.8											
5.0	SAND. Fine sand. Minor gravel to 1-1/2 inches.	950.3										Superior lobe outwash	17.2 % + #4
10.0	SAND. Fine to medium sand. Very minor gravel to 1 inch.	945.3				16.3	0.9	6.5	8.9	36.0			
15.0	SAND. Fine to medium sand. Very minor gravel to 2-1/2 inches.	940.3				14.1	2.9	5.9	5.4	25.6			
20.0	SAND. Fine to coarse sand. Very minor gravel to 1-1/2 inches.	935.3				11.4	2.9	2.7	5.8	32.4			
25.0	SAND. Fine to medium sand. Very minor trace gravel to 1 inch.	930.3				4.1	0.0	0.6	3.4	25.4			
30.0	SAND. Fine to coarse sand. Minor gravel to 1 inch.	925.3				18.0	0.0	4.1	13.9	32.1			
40.0	SAND & GRAVEL. Fine to coarse sand. Gravel to 2-3/4 inches.	915.3				25.2	3.0	6.5	15.6	36.3			
45.0	SAND. Fine to coarse sand. Minor gravel to 1-1/2 inches.	910.3				32.4	8.6	6.9	16.9	38.4			
50.0	SAND. Fine to coarse sand. Minor gravel to 1 inch.	905.3				17.1	1.7	3.5	12.0	35.2			
55.0	SAND. Fine to coarse sand. Minor gravel to 4 inches.	900.3				15.3	0.0	3.3	12.0	21.3			
65.0	SAND. Fine to medium sand. Very minor trace gravel to 3/4 inch.	890.3				18.4	9.8	2.7	5.9	22.3			
	T.D. 65 ft.												

LOG A GNIN08 UMORE PARK DRILLING LOGS.GPJ LOG A GNIN08.GDT Printed 5/30/08

DRILLING LOG

HOLE NO. G3500

Page 1 of 1

Property: UMore Park Property

Location: City of Rosemount & Empire Township, Dakota County, Minnesota

UTM Zone 15/NAD83/NAVD88

491,499.84 mE +/- 0.02 m 4,953,499.32 mN +/- 0.02 m

Elevation (ft.): 955.8 +/- 0.1 ft.

Ground Water Depth (ft.): Ground water not encountered

Ground Water Elevation (ft.):

Site: Snow covered corn stubble field at natural grade.

Drilling Method: 9-inch flight auger

Started: 12/10/07 12:15 PM

Drilling Contractor: Braun Intertec

Completed: 12/10/07 1:50 PM

Drill Rig: CME-750

Logged By: J.D. Lehr

Depth (ft.)	Graphic Log	Gravel Per Drill Action	Sample Runs	Sampled Intervals	TEST RESULTS (%)					Geologic Interpretation	Economic Classification	
					Total + #4 Sieve	+ 1.5 Inch	1.5 Inch to 3/4 Inch	3/4 Inch to #4 Sieve	Sample Wt. (lbs)			
1.0	TOPSOIL. Silty, black.										Loess	
4.0	SILT. Brown.											
5.0	SAND. Fine to medium sand, slightly dirty. Very minor gravel to 1-1/4 inches.				8.6	1.4	2.0	5.2	33.4	Superior lobe outwash	18.7% + #4	
10.0	SAND. Fine to medium sand. Very minor gravel to 2 inches.				14.5	7.5	1.4	5.7	30.2			
15.0	SAND. Fine to medium sand. Very minor gravel to 3 inches.				22.9	8.3	5.5	9.1	32.9			
20.0	SAND. Fine to coarse sand. Minor gravel to 2-3/4 inches.				12.3	0.9	5.2	6.2	29.9			
25.0	SAND. Fine to medium sand. Very minor gravel to 1-1/4 inches.				17.9	3.2	5.1	9.6	33.3			
30.0	SAND. Fine to coarse sand. Minor gravel to 1-1/2 inches.				20.1	0.0	8.3	11.8	32.0			
35.0	SAND & GRAVEL. Fine to coarse sand. Gravel to 3-1/2 inches.				27.3	8.4	5.8	13.1	33.1			
40.0	SAND & GRAVEL. Fine to coarse sand. Gravel to 1-3/4 inches.				33.5	2.6	6.5	24.4	32.4			
45.0	SAND. Fine to medium sand. Minor gravel to 1-1/2 inches.				15.3	1.6	5.1	8.6	25.3			
50.0	SAND. Fine to medium sand. Very minor gravel to 2-1/2 inches.				11.4	4.8	1.8	4.9	26.0			
55.0	SAND. Fine to medium sand. Minor gravel to 2-1/2 inches.				17.1	3.2	3.1	10.8	24.1			
60.0	SAND & GRAVEL. Fine to coarse sand. Gravel to 2 inches.				25.4	4.4	5.0	16.0	31.2			
65.0	T.D. 65 ft.											

LOG A GNNIN08 UMORE PARK DRILLING LOGS.GPJ LOG A GNNIN08.GDT Printed 5/30/08

DRILLING LOG

HOLE NO. G3700

Page 1 of 1

Property: UMore Park Property

Location: City of Rosemount & Empire Township, Dakota County, Minnesota

UTM Zone 15/NAD83/NAVD88

491,499.74 mE +/- 0.02 m 4,953,700.04 mN +/- 0.02 m

Elevation (ft.): 958.4 +/- 0.1 ft.

Ground Water Depth (ft.): Ground water not encountered

Ground Water Elevation (ft.):

Site: Snow covered soybean stubble field at natural grade.

Drilling Method: 9-inch flight auger

Started: 12/10/07 8:30 AM

Drilling Contractor: Braun Intertec

Completed: 12/10/07 10:10 AM

Drill Rig: CME-750

Logged By: J.D. Lehr

		DRILLING & SAMPLING					TEST RESULTS (%)					Geologic Interpretation	Economic Classification
Graphic Log	Depth (ft.)	Gravel Per Drill Action	Sample Runs	Sampled Intervals	Total + #4 Sieve	+ 1.5 Inch	1.5 Inch to 3/4 Inch	3/4 Inch to #4 Sieve	Sample Wt. (lbs)				
1.0 TOPSOIL. Silty, black.	957.4										Loess		
3.0 SILT. Brown.	955.4												
5.0 SAND. Fine to medium sand. Minor gravel to 3/4 inch.	953.4												
10.0 SAND. Fine to coarse sand. Minor gravel to 1-3/4 inches.	948.4					15.1	0.9	3.0	11.2	45.2			
15.0 SAND. Fine to coarse sand. Very minor gravel to 1 inch.	943.4					11.5	0.0	1.7	9.8	31.1			
20.0 SAND. Fine to medium sand. Very minor trace gravel to 3/4 inch.	938.4					4.1	0.0	0.2	3.9	22.6			
25.0 SAND. Fine to coarse sand. Very minor gravel to 1-3/4 inches.	933.4					9.5	1.3	2.2	6.1	30.9			
30.0 SAND & GRAVEL. Fine to coarse sand. Gravel to 1-1/2 inches.	928.4					37.1	2.1	10.0	25.0	41.0			
35.0 GRAVEL & SAND. Fine to coarse sand. Gravel to 5 inches.	923.4					40.3	17.9	6.4	16.1	37.6			
40.0 SAND & GRAVEL. Fine to coarse sand. Gravel to 4 inches.	918.4					33.8	10.3	5.1	18.4	30.7	Superior lobe outwash		
45.0 SAND. Fine to medium sand. Minor gravel to 2 inches.	913.4					17.9	5.3	4.8	7.8	28.0			
50.0 SAND & GRAVEL. Fine to coarse sand. Gravel to 5 inches.	908.4					34.6	12.1	6.4	16.1	40.0			
55.0 SAND. Fine to coarse sand. Very minor gravel to 1-1/2 inches.	903.4					14.2	1.0	3.3	9.9	24.0			
60.0 SAND. Fine to coarse sand. Minor gravel to 1-3/4 inches.	898.4					19.9	2.7	4.3	12.9	22.5			
65.0 SAND & GRAVEL. Fine to coarse sand. Gravel to 1-3/4 inches.	893.4					26.8	5.6	5.5	15.7	25.3			
	T.D. 65 ft.												

21.8 % + #4

LOG A GNNIN08 UMORE PARK DRILLING LOGS.GPJ LOG A GNNIN08.GDT Printed 5/30/08

DRILLING LOG

HOLE NO. GG0000

Page 1 of 1

Property: UMore Park Property

Location: City of Rosemount & Empire Township, Dakota County, Minnesota

UTM Zone 15/NAD83/NAVD88
 494,100.84 mE +/- 0.02 m 4,949,999.88 mN +/- 0.02 m
 Elevation (ft.): 935.6 +/- 0.1 ft.
 Ground Water Depth (ft.): 57.0
 Ground Water Elevation (ft.): 878.6
 Site: Soybean stubble field at natural grade.

Drilling Method: 9-inch flight auger Started: 11/6/07 2:05 PM
 Drilling Contractor: Braun Intertec Completed: 11/6/07 3:35 PM
 Drill Rig: CME-750 Logged By: J.D. Lehr

		DRILLING & SAMPLING				TEST RESULTS (%)				Geologic Interpretation	Economic Classification
Graphic Log	Depth (ft.)	Gravel Per Drill Action	Sample Runs	Sampled Intervals	Total + #4 Sieve	+ 1.5 Inch	1.5 Inch to 3/4 Inch	3/4 Inch to #4 Sieve	Sample Wt. (lbs)		
1.5 TOPSOIL. Silty, black.	934.1									Loess	
3.0 SILT. Brown.	932.6										
SAND. Fine sand. Very minor trace gravel to 1 inch.					4.0	0.0	0.6	3.4	26.1	Superior lobe outwash	10.3 % + #4
15.0	920.6				3.5	0.0	0.8	2.7	18.6		
SAND. Fine to medium sand. Very minor gravel to 1-1/2 inches.					7.8	0.0	1.1	6.7	20.3		
20.0	915.6				17.1	1.6	3.4	12.1	27.2		
SAND. Fine to coarse sand. Minor gravel to 2 inches.					16.6	0.0	4.0	12.6	26.1		
25.0	910.6				15.0	0.0	0.3	14.7	23.0	Superior lobe outwash	10.3 % + #4
SAND. Fine to coarse sand. Minor gravel to 1-1/2 inches.											
30.0	905.6										
SAND. Fine to coarse sand. Minor gravel to 1/2 inch.											
35.0	900.6										
SAND. Fine sand. Very minor trace gravel to 1 inch.											
40.0	895.6										
SAND. Fine to coarse sand. Very minor gravel to 1-1/4 inches.											
45.0	890.6										
SAND. Fine sand. No gravel.											
50.0	885.6										
SAND. Fine sand. Very minor trace gravel to 1 inch.											
55.0	880.6										
SAND. Fine to medium sand. Very minor gravel to 1/2 inch.											
60.0	875.6										
SAND. Fine to very coarse sand. Minor gravel to 1-1/4 inches.											
65.0	870.6										
	T.D. 65 ft.										

LOG A GNIN08 UMORE PARK DRILLING LOGS.GPJ LOG A GNIN08.GDT Printed 5/30/08

DRILLING LOG

HOLE NO. GG0200

Page 1 of 1

Property: UMore Park Property

Location: City of Rosemount & Empire Township, Dakota County, Minnesota

UTM Zone 15/NAD83/NAVD88
 494,100.01 mE +/- 0.02 m 4,950,199.84 mN +/- 0.02 m
 Elevation (ft.): 936.3 +/- 0.1 ft.
 Ground Water Depth (ft.): 58.0
 Ground Water Elevation (ft.): 878.3
 Site: Soybean stubble field at natural grade.

Drilling Method: 9-inch flight auger Started: 11/6/07 3:40 PM
 Drilling Contractor: Braun Intertec Completed: 11/6/07 5:00 PM
 Drill Rig: CME-750 Logged By: J.D. Lehr

		DRILLING & SAMPLING					TEST RESULTS (%)				Geologic Interpretation	Economic Classification
Graphic Log	Depth (ft.)	Gravel Per Drill Action	Sample Runs	Sampled Intervals	Total + #4 Sieve	+ 1.5 Inch	1.5 Inch to 3/4 Inch	3/4 Inch to #4 Sieve	Sample Wt. (lbs)			
1.5 TOPSOIL. Silty, black.	934.8										Loess	
3.5 SILT. Brown.	932.8											
5.0 SAND. Fine sand. Very minor trace gravel to 1/2 inch.	931.3										Superior lobe outwash	13.5 % + #4
10.0 SAND. Fine to coarse sand. Very minor gravel to 2 inches.	926.3				12.2	2.3	3.3	6.6	32.9			
SAND. Fine sand. Very minor gravel to 1 inch.					8.7	0.0	2.1	6.6	20.3			
					5.1	0.0	1.8	3.3	19.5			
					5.1	0.0	0.8	4.3	20.9			
25.0 SAND. Fine to coarse sand. Minor gravel to 1 inch, mostly pea gravel.	911.3				21.6	0.0	2.5	19.1	26.4			
30.0 SAND & GRAVEL. Fine to coarse sand. Gravel to 1 inch, mostly pea gravel.	906.3				28.6	0.0	1.9	26.7	35.1			
35.0 SAND. Fine to medium sand. Very minor gravel to 1-3/4 inches.	901.3											
40.0 SAND. Fine to coarse sand. Very minor gravel to 1-1/2 inches.	896.3											
45.0 SAND. Fine sand. Very minor trace gravel to 1/2 inch.	891.3											
50.0 SAND. Fine to medium sand. Very minor trace gravel to 1 inch.	886.3											
60.0 SAND. Fine to coarse sand. Minor gravel to 2-1/2 inches.	876.3											
65.0 SAND. Fine to coarse sand. Minor gravel to 2-1/2 inches.	871.3											
	T.D. 65 ft.											

LOG A GNIN08 UMORE PARK DRILLING LOGS.GPJ LOG A GNIN08.GDT Printed 5/30/08

DRILLING LOG

HOLE NO. GG0400

Page 1 of 1

Property: UMore Park Property

Location: City of Rosemount & Empire Township, Dakota County, Minnesota

UTM Zone 15/NAD83/NAVD88

494,099.23 mE +/- 0.02 m 4,950,400.27 mN +/- 0.02 m

Elevation (ft.): 935.6 +/- 0.1 ft.

Ground Water Depth (ft.): Ground water not encountered

Ground Water Elevation (ft.):

Site: Soybean stubble field at natural grade.

Drilling Method: 9-inch flight auger

Started: 11/7/07 7:30 AM

Drilling Contractor: Braun Intertec

Completed: 11/7/07 8:40 AM

Drill Rig: CME-750

Logged By: J.D. Lehr

DRILLING & SAMPLING

TEST RESULTS (%)

Geologic Interpretation
Economic Classification

Graphic Log	Depth (ft.)	Gravel Per Drill Action	Sample Runs	Sampled Intervals	Total + #4 Sieve	+ 1.5 Inch	1.5 Inch to 3/4 Inch	3/4 Inch to #4 Sieve	Sample Wt. (lbs)	Geologic Interpretation	Economic Classification
1.5 TOPSOIL. Silty, black.	934.1									Loess	
3.5 SILT. Brown.	932.1										
5.0 SAND. Fine to medium sand, slightly dirty. Very minor trace gravel to 1/2 inch.	930.6									Superior lobe outwash	11.3% + #4
10.0 SAND. Fine to medium sand. Very minor gravel to 3-1/2 inches.	925.6				11.0	5.3	0.8	4.9	27.0		
SAND. Fine sand. No gravel.					1.4	0.0	0.0	1.4	22.6		
20.0	915.6				1.0	0.0	0.0	1.0	20.2		
SAND. Fine to coarse sand. Very minor gravel to 1 inch.					11.2	1.8	1.1	8.2	23.1		
25.0	910.6										
SAND. Fine to coarse sand. Minor gravel to 2 inches.					15.5	0.0	3.1	12.5	24.9		
30.0	905.6										
SAND. Fine to coarse sand. Minor gravel to 1-1/4 inches.					13.5	0.0	3.1	10.4	28.0		
40.0	895.6										
SAND. Fine sand. Very minor gravel to 1-3/4 inches.					16.1	0.0	3.4	12.7	24.0		
45.0	890.6										
SAND. Fine sand. Minor gravel to 1-3/4 inches.					7.7	1.3	2.3	4.0	25.0		
50.0	885.6										
					24.3	1.5	7.8	15.0	18.8		

T.D. 50 ft.
Broke off lower 25 feet of augers while drilling at 50 feet. Recovered all augers. Refusal in coarse gravel at 50 feet.

LOG-A GNNIN08 UMORE PARK DRILLING LOGS.GPJ LOG-A GNNIN08.GDT Printed 5/30/08

DRILLING LOG

HOLE NO. GG0500

Page 1 of 1

Property: UMore Park Property

Location: City of Rosemount & Empire Township, Dakota County, Minnesota

UTM Zone 15/NAD83/NAVD88

494,094.48 mE +/- 0.02 m 4,950,489.36 mN +/- 0.02 m

Elevation (ft.): 937.8 +/- 0.1 ft.

Ground Water Depth (ft.): Ground water not encountered

Ground Water Elevation (ft.):

Site: Edge of road a few feet above natural grade.

Drilling Method: 9-inch flight auger

Started: 3/27/08 3:15 PM

Drilling Contractor: Braun Intertec

Completed: 3/27/08 4:30 PM

Drill Rig: CME-750

Logged By: J.D. Lehr

DRILLING & SAMPLING

TEST RESULTS (%)

Geologic Interpretation
Economic Classification

Graphic Log	Depth (ft.)	Gravel Per Drill Action	Sample Runs	Sampled Intervals	Total + #4 Sieve	+ 1.5 Inch	1.5 Inch to 3/4 Inch	3/4 Inch to #4 Sieve	Sample Wt. (lbs)	Geologic Interpretation	Economic Classification
2.0 FILL. Gravelly, silty, sandy.	935.8									Fill	
3.0 TOPSOIL. Silty, dark brown.	934.8									Loess	
4.0 SILT. Brown.	933.8									Superior lobe outwash	
5.0 SAND. Fine sand, slightly dirty. Very minor gravel to 1/2 inch. Small sample.	932.8										
SAND. Fine to coarse sand. Very minor gravel to 1 inch.											
15.0 SAND. Fine to medium sand. Very minor gravel to 1-1/2 inches.	922.8										
20.0 SAND. Fine to medium sand. Very minor trace gravel to 3/4 inch.	917.8										
25.0 SAND. Fine to medium sand. Very minor gravel to 1-1/4 inches.	912.8										
30.0 SAND. Fine to very coarse sand. Very minor gravel to 1-3/4 inches.	907.8										
35.0 SAND. Medium to very coarse sand. Very minor gravel to 1/2 inch.	902.8										
45.0 SAND. Medium to very coarse sand. Very minor gravel to 1-1/2 inches.	892.8										
52.0 SANDSTONE. Very fine sand, white.	885.8								St. Peter Sandstone		
53.0 SANDSTONE. Very fine sand, white.	884.8										

No samples taken. Estimated 10 to 15 percent gravel from 4 to 52 feet.

T.D.
53 ft.

LOG-A-GNINN08-UMORE PARK DRILLING LOGS.GPJ LOG-A-GNINN08.GDT Printed: 5/30/08

DRILLING LOG

HOLE NO. GG0600

Page 1 of 1

Property: UMore Park Property

Location: City of Rosemount & Empire Township, Dakota County, Minnesota

UTM Zone 15/NAD83/NAVD88

494,098.15 mE +/- 0.02 m 4,950,600.44 mN +/- 0.02 m

Elevation (ft.): 937.1 +/- 0.1 ft.

Ground Water Depth (ft.): Ground water not encountered

Ground Water Elevation (ft.):

Site: Alfalfa field at natural grade.

Drilling Method: 9-inch flight auger

Started: 11/7/07 10:20 AM

Drilling Contractor: Braun Intertec

Completed: 11/7/07 12:00 PM

Drill Rig: CME-750

Logged By: J.D. Lehr

DRILLING & SAMPLING

TEST RESULTS (%)

Geologic Interpretation
Economic Classification

Graphic Log	Depth (ft.)	Gravel Per Drill Action	Sample Runs	Sampled Intervals	Total + #4 Sieve	+ 1.5 Inch	1.5 Inch to 3/4 Inch	3/4 Inch to #4 Sieve	Sample Wt. (lbs)	Geologic Interpretation	Economic Classification
1.5 TOPSOIL. Silty, black.	935.6									Loess	
3.0 SILT. Brown.	934.1										
5.0 SAND. Fine to coarse sand. Very minor gravel to 1-1/2 inches.	932.1				14.8	0.0	2.4	12.4	13.3	Superior lobe outwash	20.9% + #4
SAND. Fine sand: Very minor trace gravel to 1 inch.					2.6	0.0	0.4	2.2	26.5		
					3.4	0.0	0.7	2.7	18.2		
					3.4	0.0	1.2	2.2	21.6		
20.0 SAND. Fine to coarse sand. Minor gravel to 3 inches.	917.1				18.0	4.1	3.9	10.0	25.8		
25.0 SAND & GRAVEL. Fine to coarse sand. Gravel to 3-1/2 inches.	912.1				28.5	10.0	3.1	15.4	25.9		
30.0 SAND & GRAVEL. Fine to coarse sand. Gravel to 2-1/2 inches.	907.1				27.3	6.2	3.6	17.5	25.1		
35.0 SAND. Fine to coarse sand. Minor gravel to 2-1/2 inches.	902.1				20.4	5.7	2.5	12.3	25.0		
40.0 SAND. Fine to coarse sand. Minor gravel to 1-1/4 inches.	897.1				24.1	0.7	4.3	19.1	25.2		
45.0 SAND & GRAVEL. Fine to coarse sand. Gravel to 1-1/4 inches.	892.1				27.2	0.0	2.0	25.1	22.4		
50.0 GRAVEL & SAND. Fine to coarse sand, slightly dirty. Gravel to 1-1/2 inches. Refusal in coarse gravel at 57 feet.	887.1				46.7	1.2	5.6	39.9	40.0		
57.0	880.1										

T.D.
57 ft.

LOG A GNNIN08 UMORE PARK DRILLING LOGS.GPJ LOG A GNNIN08.GDT Printed 5/30/08

DRILLING LOG

HOLE NO. GG0700

Page 1 of 1

Property: UMore Park Property

Location: City of Rosemount & Empire Township, Dakota County, Minnesota

UTM Zone 15/NAD83/NAVD88

494,099.87 mE +/- 0.02 m 4,950,699.55 mN +/- 0.02 m

Elevation (ft.): 937.7 +/- 0.1 ft.

Ground Water Depth (ft.): Ground water not encountered

Ground Water Elevation (ft.):

Site: Snow covered alfalfa field at natural grade.

Drilling Method: 9-inch flight auger

Started: 3/6/08 11:00 AM

Drilling Contractor: Braun Intertec

Completed: 3/6/08 11:50 AM

Drill Rig: CME-750

Logged By: J.D. Lehr

Depth (ft.)	Graphic Log	Gravel Per Drill Action	Sample Runs	Sampled Intervals	TEST RESULTS (%)					Geologic Interpretation	Economic Classification	
					Total + #4 Sieve	+ 1.5 Inch	1.5 Inch to 3/4 Inch	3/4 Inch to #4 Sieve	Sample Wt. (lbs)			
1.5	TOPSOIL. Silty, black.										Loess	
3.0	SILT. Brown.											
5.0	SAND. Fine to coarse sand, slightly dirty. Minor gravel to 1-1/4 inches.				15.5	2.1	5.0	8.4	48.9		Superior lobe outwash	20.4% + #4
10.0	SAND. Fine to medium sand. Very minor gravel to 2-1/2 inches.				16.7	3.1	4.8	8.8	31.8			
15.0	SAND. Fine to medium sand. Minor gravel to 2 inches.				15.4	10.6	1.1	3.7	26.1			
20.0	SAND. Fine sand. Minor gravel to 3-1/2 inches.				21.3	3.6	5.3	12.4	32.9			
25.0	SAND. Fine to very coarse sand. Minor gravel to 2-1/2 inches.				24.2	5.1	5.7	13.4	29.1			
30.0	SAND & GRAVEL. Fine to very coarse sand. Gravel to 4 inches.				28.4	8.0	3.2	17.2	29.0			
35.0	SAND. Fine to coarse sand. Minor gravel to 2 inches.				23.2	5.4	1.8	16.0	22.7			
41.0												
42.0	SANDSTONE. Very fine sand, yellowish white.									St. Peter Sandstone		
	T.D. 42 ft.											

LOG A GNNN08 UMORE PARK DRILLING LOGS.GPJ LOG A GNNN08.GDT Printed 5/30/08

DRILLING LOG

HOLE NO. GG0800

Page 1 of 1

Property: UMore Park Property

Location: City of Rosemount & Empire Township, Dakota County, Minnesota

UTM Zone 15/NAD83/NAVD88

494,100.77 mE +/- 0.02 m 4,950,803.64 mN +/- 0.02 m

Elevation (ft.): 936.6 +/- 0.1 ft.

Ground Water Depth (ft.): Ground water not encountered

Ground Water Elevation (ft.):

Site: Soybean stubble field at natural grade.

Drilling Method: 9-inch flight auger

Started: 11/7/07 12:35 PM

Drilling Contractor: Braun Intertec

Completed: 11/7/07 1:45 PM

Drill Rig: CME-750

Logged By: J.D. Lehr

		DRILLING & SAMPLING					TEST RESULTS (%)					Geologic Interpretation	Economic Classification
Graphic Log	Depth (ft.)	Gravel Per Drill Action	Sample Runs	Sampled Intervals	Total + #4 Sieve	+ 1.5 Inch	1.5 Inch to 3/4 Inch	3/4 Inch to #4 Sieve	Sample Wt. (lbs)				
1.0	TOPSOIL. Silty, black.	935.6										Loess	
3.0	SILT. Brown.	933.6											
5.0	SAND. Fine to medium sand. Minor gravel to 1-1/2 inches.	931.6											
10.0	SAND. Fine sand: Very minor gravel to 1 inch.	926.6				13.9	0.0	2.4	11.4	35.0			
15.0	SAND. Fine sand. Very minor trace gravel to 1 inch.	921.6				4.9	0.0	0.7	4.2	20.7			
20.0	SAND. Fine to medium sand. Very minor trace gravel to 1 inch.	916.6				2.4	0.0	0.4	1.9	20.5			
25.0	SAND. Fine sand. Very minor trace gravel to 1/2 inch.	911.6				1.9	0.0	0.0	1.9	17.1		Superior lobe outwash	
30.0	SAND. Fine to coarse sand. Minor gravel to 1-1/4 inches.	906.6				24.7	0.0	4.8	19.9	28.6			
35.0	SAND & GRAVEL. Fine to coarse sand. Gravel to 2 inches.	901.6				26.4	1.2	2.6	22.6	26.9			
40.0	NO RECOVERY. Samples displaced while drilling sandstone below. Assumed similar to 30 to 35 foot interval based on drill action.	896.6											
45.0	SANDSTONE. Very fine sand, white.	891.6										St. Peter Sandstone	
	T.D. 45 ft.												

12.5% + #4

LOG A GNINN08 UMORE PARK DRILLING LOGS.GPJ LOG A GNINN08.GDT Printed 5/30/08

DRILLING LOG

HOLE NO. GG1000

Page 1 of 1

Property: UMore Park Property

Location: City of Rosemount & Empire Township, Dakota County, Minnesota

UTM Zone 15/NAD83/NAVD88

494,099.17 mE +/- 0.02 m 4,951,000.08 mN +/- 0.02 m

Elevation (ft.): 937.2 +/- 0.1 ft.

Ground Water Depth (ft.): Ground water not encountered

Ground Water Elevation (ft.):

Site: Soybean stubble field at natural grade.

Drilling Method: 9-inch flight auger

Started: 11/7/07 1:50 PM

Drilling Contractor: Braun Intertec

Completed: 11/7/07 2:45 PM

Drill Rig: CME-750

Logged By: J.D. Lehr

DRILLING & SAMPLING

TEST RESULTS (%)

Geologic Interpretation
Economic Classification

Graphic Log	Depth (ft.)	Gravel Per Drill Action	Sample Runs	Sampled Intervals	Total + #4 Sieve	+ 1.5 Inch	1.5 Inch to 3/4 Inch	3/4 Inch to #4 Sieve	Sample Wt. (lbs)	Geologic Interpretation	Economic Classification
2.0 TOPSOIL. Silty, black.	935.2									Loess	
3.0 SILT. Brown.	934.2										
5.0 SAND. Fine sand, slightly dirty. Very minor gravel to 1 inch.	932.2				10.8	1.4	3.7	5.7	23.7	Superior lobe outwash	20.6% + #4
10.0 SAND. Fine to medium sand. Very minor gravel to 1-3/4 inches.	927.2				20.6	2.7	7.0	11.0	29.7		
15.0 SAND. Fine to medium sand. Minor gravel to 2 inches.	922.2				26.2	6.0	9.7	10.6	28.9		
20.0 SAND & GRAVEL. Fine to coarse sand. Gravel to 2-1/2 inches.	917.2				28.5	17.8	3.6	7.1	29.3		
25.0 SAND & GRAVEL. Fine to medium sand. Gravel to 3-1/2 inches.	912.2									Till	
30.0 SAND. Fine to coarse sand, extremely dirty. Minor gravel to 3 inches.	907.2										
36.0 SAND. Fine to coarse sand, extremely dirty. Minor gravel to 1 inch.	901.2									St. Peter Sandstone	
45.0 SANDSTONE. Very fine sand, yellowish brown.	892.2										

T.D. 45 ft.

Interval 25 to 36 feet almost till-like

LOG A GNIN08 UMORE PARK DRILLING LOGS.GPJ LOG A GNIN08.GDT Printed 5/30/08

DRILLING LOG

HOLE NO. GG1200

Page 1 of 1

Property: UMore Park Property

Location: City of Rosemount & Empire Township, Dakota County, Minnesota

UTM Zone 15/NAD83/NAVD88

494,100.18 mE +/- 0.02 m 4,951,206.53 mN +/- 0.02 m

Elevation (ft.): 938.4 +/- 0.1 ft.

Ground Water Depth (ft.): Ground water not encountered

Ground Water Elevation (ft.):

Site: Plowed field at natural grade.

Drilling Method: 9-inch flight auger

Started: 11/7/07 2:50 PM

Drilling Contractor: Braun Intertec

Completed: 11/7/07 4:10 PM

Drill Rig: CME-750

Logged By: J.D. Lehr

DRILLING & SAMPLING

TEST RESULTS (%)

Geologic Interpretation
Economic Classification

Graphic Log	Depth (ft.)	Gravel Per Drill Action	Sample Runs	Sampled Intervals	Total + #4 Sieve	+ 1.5 Inch	1.5 Inch to 3/4 Inch	3/4 Inch to #4 Sieve	Sample Wt. (lbs)	Geologic Interpretation	Economic Classification
2.5 TOPSOIL. Silty, black.	935.9									Loess	
7.0 SILT. Brown. Lower contact based on drill action.	931.4										
10.0 SAND. Fine to medium sand. Very minor gravel to 2 inches.	928.4				10.0	1.7	2.5	5.7	21.8	Superior lobe outwash	23.3 % + #4
15.0 SAND. Fine to medium sand. Minor gravel to 3-1/2 inches.	923.4				17.6	5.7	5.3	6.6	25.8		
20.0 SAND & GRAVEL. Fine to coarse sand. Gravel to 3 inches.	918.4				27.9	5.4	9.0	13.5	29.1		
25.0 SAND. Fine to coarse sand. Minor gravel to 3 inches.	913.4				23.5	6.7	5.5	11.2	22.2		
30.0 SAND & GRAVEL. Fine to coarse sand, slightly dirty. Gravel to 3 inches. Very rocky (drill action) from 30 to 38 feet. Refusal in coarse gravel at 38 feet.					28.4	5.2	3.4	19.8	31.4		
38.0	900.4				25.7	10.3	5.2	10.2	41.1		
T.D. 38 ft.											

Field photos for 25 to 35 foot interval are incorrectly labeled. Sticks should be reversed.

LOG A GNNIN08 UMORE PARK DRILLING LOGS.GPJ LOG A GNNIN08.GDT Printed 5/30/08

DRILLING LOG

HOLE NO. GG1400

Page 1 of 1

Property: UMore Park Property

Location: City of Rosemount & Empire Township, Dakota County, Minnesota

UTM Zone 15/NAD83/NAVD88

494,099.41 mE +/- 0.02 m 4,951,396.17 mN +/- 0.02 m

Elevation (ft.): 934.9 +/- 0.1 ft.

Ground Water Depth (ft.): Ground water not encountered

Ground Water Elevation (ft.):

Site: Plowed field at natural grade.

Drilling Method: 9-inch flight auger

Started: 11/8/07 7:30 AM

Drilling Contractor: Braun Intertec

Completed: 11/8/07 8:50 AM

Drill Rig: CME-750

Logged By: J.D. Lehr

DRILLING & SAMPLING

TEST RESULTS (%)

Geologic Interpretation
Economic Classification

Graphic Log	Depth (ft.)	Gravel Per Drill Action	Sample Runs	Sampled Intervals	Total + #4 Sieve	+ 1.5 Inch	1.5 Inch to 3/4 Inch	3/4 Inch to #4 Sieve	Sample Wt. (lbs)	Geologic Interpretation	Economic Classification
1.0 TOPSOIL. Silty, black.	933.9									Loess	
3.0 SILT. Brown.	931.9										
5.0 SAND. Fine to medium sand, slightly dirty. Very minor trace gravel to 1 inch.	929.9									Superior lobe outwash	
10.0 SAND. Fine to medium sand. Very minor trace gravel to 1-1/2 inches.	924.9										
SAND. Fine sand. Very minor trace gravel to 1-1/4 inches.											
25.0 SAND. Very fine to fine sand. No gravel.	909.9										
30.0 SAND. Fine sand. Very minor trace gravel to 1 inch.	904.9										
35.0 SAND. Very fine to fine sand, slightly dirty. Very minor gravel to 1-1/2 inches.	899.9										
40.0 SAND & GRAVEL. Fine to coarse sand, dirty. Gravel to 1-1/4 inches. High percentage pea gravel.	894.9										
45.0 SAND & GRAVEL. Fine to coarse sand, dirty. Gravel to 2-1/2 inches. High percentage pea gravel.	889.9										
50.0 SAND & GRAVEL. Fine to coarse sand, dirty. Gravel to 2-1/2 inches. High percentage pea gravel. Very rocky (drill action) from 45 to 50 feet. Refusal on large boulder at 50 feet.	884.9										
T.D. 50 ft.											

No samples taken. Not enough gravel 3 to 40 feet to justify only 40 to 50 foot interval. If deposit extends deeper, then may be economic.

LOG-A-GNINN08-UMORE PARK DRILLING LOGS.GPJ LOG-A-GNINN08.GDT Printed 5/30/08

DRILLING LOG

HOLE NO. GG1600

Page 1 of 1

Property: UMore Park Property

Location: City of Rosemount & Empire Township, Dakota County, Minnesota

UTM Zone 15/NAD83/NAVD88
 494,099.42 mE +/- 0.02 m 4,951,609.17 mN +/- 0.02 m
 Elevation (ft.): 935.9 +/- 0.1 ft.
 Ground Water Depth (ft.): 63.0
 Ground Water Elevation (ft.): 872.9
 Site: Snow covered field at natural grade.

Drilling Method: 9-inch flight auger Started: 1/29/08 7:30 AM
 Drilling Contractor: Braun Intertec Completed: 1/29/08 9:00 AM
 Drill Rig: CME-750 Logged By: J.D. Lehr

		DRILLING & SAMPLING				TEST RESULTS (%)				Geologic Interpretation	Economic Classification
Graphic Log	Depth (ft.)	Gravel Per Drill Action	Sample Runs	Sampled Intervals	Total + #4 Sieve	+ 1.5 Inch	1.5 Inch to 3/4 Inch	3/4 Inch to #4 Sieve	Sample Wt. (lbs)		
2.0	TOPSOIL. Silty, dark brown.									Loess	
3.0	SILT. Brown.										
4.0	SAND. Very fine sand. No gravel.									Superior lobe outwash	19.3% + #4
5.0	SAND & GRAVEL. Fine to coarse sand. Gravel to 1 inch.				7.9	0.0	3.3	4.6	30.5		
15.0	SAND. Fine to medium sand. Very minor gravel to 1-1/4 inches.										
20.0	SAND. Fine to coarse sand. Very minor gravel to 1-1/4 inches.				8.4	0.0	3.1	5.2	32.8		
25.0	SAND. Fine to very coarse sand. Minor gravel to 1-1/2 inches.				24.6	1.0	3.3	20.3	31.5		
30.0	SAND. Fine to medium sand. Minor gravel to 4 inches.				21.5	7.1	5.7	8.8	40.7		
35.0	SAND & GRAVEL. Fine to coarse sand. Gravel to 1 inch. High percentage pea gravel.				25.6	0.5	5.2	19.9	32.5		
40.0	SAND & GRAVEL. Fine to coarse sand. Gravel to 3-1/2 inches.				28.7	12.6	5.1	11.0	32.1		
45.0	SAND. Fine to medium sand. Very minor gravel to 1-1/4 inches.				13.1	0.0	2.9	10.2	27.0		
50.0	SAND. Fine to medium sand. Minor gravel to 2 inches.				18.6	1.6	7.2	9.7	30.1		
55.0	SAND & GRAVEL. Fine to coarse sand. Gravel to 3-1/2 inches.				29.1	13.3	4.8	10.9	33.6		
60.0	SAND. Fine to coarse sand. Minor gravel to 1-3/4 inches.				22.5	2.2	4.4	16.0	28.9		
65.0	SAND & GRAVEL. Fine to very coarse sand. Gravel to 4 inches.				26.5	9.1	3.1	14.3	30.7		
	T.D. 65 ft.										

LOG A GNNIN08 UMORE PARK DRILLING LOGS.GPJ LOG A GNNIN08.GDT Printed 5/30/08

DRILLING LOG

HOLE NO. GG1700

Page 1 of 2

Property: UMore Park Property

Location: City of Rosemount & Empire Township, Dakota County, Minnesota

UTM Zone 15/NAD83/NAVD88
 494,090.82 mE +/- 0.02 m 4,951,677.53 mN +/- 0.02 m
 Elevation (ft.): 931.7 +/- 0.1 ft.
 Ground Water Depth (ft.): Ground water level uncertain
 Ground Water Elevation (ft.):
 Site: Snow covered corn stubble field at natural grade.

Drilling Method: 4x6 Rotasonic Started: 3/4/08 3:05 PM
 Drilling Contractor: Traut Wells Completed: 3/4/08 4:45 PM
 Drill Rig: Versasonic Logged By: J.D. Lehr

DRILLING & SAMPLING					TEST RESULTS (%)					Geologic Interpretation	Economic Classification
Graphic Log	Depth (ft.)	Gravel Per Drill Action	Sample Runs	Sampled Intervals	Total + #4 Sieve	+ 1.5 Inch	1.5 Inch to 3/4 Inch	3/4 Inch to #4 Sieve	Sample Wt. (lbs)		

4.0	927.7										Loess	
7.0	924.7											
20.0	911.7				11.6	3.5	3.1	5.0	33.9		Superior lobe outwash	13.4% + #4
30.0	901.7				10.6	1.8	2.9	5.8	29.6			
40.0	891.7				20.4	6.3	2.2	11.9	46.7			
50.0	881.7				16.0	4.1	2.9	9.0	32.6			
60.0	871.7				10.7	3.2	0.8	6.7	37.4			
70.0	861.7				3.2	0.0	0.5	2.7	37.2			

Continued Next Page

LOG A GNNIN08 UMORE PARK DRILLING LOGS.GPJ LOG A GNNIN08.GDT Printed 5/30/08

DRILLING LOG

HOLE NO. GG1700



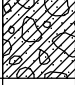
Page 2 of 2

Property: UMore Park Property

Location: City of Rosemount & Empire Township, Dakota County, Minnesota

UTM Zone 15/NAD83/NAVD88
 494,090.82 mE +/- 0.02 m 4,951,677.53 mN +/- 0.02 m
 Elevation (ft.): 931.7 +/- 0.1 ft.
 Ground Water Depth (ft.): Ground water level uncertain
 Ground Water Elevation (ft.):
 Site: Snow covered corn stubble field at natural grade.

Drilling Method: 4x6 Rotasonic Started: 3/4/08 3:05 PM
 Drilling Contractor: Traut Wells Completed: 3/4/08 4:45 PM
 Drill Rig: Versasonic Logged By: J.D. Lehr

Depth (ft.)	Graphic Log	Gravel Per Drill Action	Sample Runs	Sampled Intervals	TEST RESULTS (%)					Geologic Interpretation	Economic Classification
					Total + #4 Sieve	+ 1.5 Inch	1.5 Inch to 3/4 Inch	3/4 Inch to #4 Sieve	Sample Wt. (lbs)		
80.0				80.0 - 85.5	6.4	0.0	0.7	5.8	38.4		
85.5				85.5 - 90.0	41.6	9.5	8.8	23.3	65.0		
90.0										Till	
	T.D. 90 ft.										

LOG A GNIN08 UMORE PARK DRILLING LOGS.GPJ LOG A GNIN08.GDT Printed 5/30/08

DRILLING LOG

HOLE NO. GG2200

Page 1 of 1

Property: UMore Park Property

Location: City of Rosemount & Empire Township, Dakota County, Minnesota

UTM Zone 15/NAD83/NAVD88

494,117.46 mE +/- 0.02 m 4,952,165.89 mN +/- 0.02 m

Elevation (ft.): 930.5 +/- 0.1 ft.

Ground Water Depth (ft.): Ground water not encountered

Ground Water Elevation (ft.):

Site: Edge of snow covered trail, surface likely disturbed.

Drilling Method: 9-inch flight auger

Started: 1/25/08 2:15 PM

Drilling Contractor: Braun Intertec

Completed: 1/25/08 3:15 PM

Drill Rig: CME-750

Logged By: J.D. Lehr

DRILLING & SAMPLING

TEST RESULTS (%)

Geologic Interpretation
Economic Classification

Graphic Log	Depth (ft.)	Gravel Per Drill Action	Sample Runs	Sampled Intervals	Total + #4 Sieve	+ 1.5 Inch	1.5 Inch to 3/4 Inch	3/4 Inch to #4 Sieve	Sample Wt. (lbs)	Geologic Interpretation	Economic Classification
	3.0									Fill	
FILL. Silty, sandy, gravelly.	927.5										
SAND & GRAVEL. Fine to coarse sand. Gravel to 1-1/2 inches.	925.5									Superior lobe outwash	
SAND. Fine to coarse sand. Very minor gravel to 1 inch.	920.5										
SAND. Fine to coarse sand. Very minor gravel to 1-1/2 inches.	915.5										
SAND. Fine to medium sand. Very minor gravel to 1-1/4 inches.	910.5										
SAND. Fine sand. No gravel.	905.5									Lacustrine sediment	
SAND. Very fine sand, dirty, reddish brown. No gravel.											
	45.0										
	885.5										
	T.D. 45 ft.										
No samples taken. Estimated less than 10 percent gravel from 5 to 25 feet.											

LOG A GNNN08 UMORE PARK DRILLING LOGS.GPJ LOG A GNNN08.GDT Printed 5/30/08

DRILLING LOG

HOLE NO. GG2400

Page 1 of 1

Property: UMore Park Property

Location: City of Rosemount & Empire Township, Dakota County, Minnesota

UTM Zone 15/NAD83/NAVD88

494,099.47 mE +/- 0.02 m 4,952,402.14 mN +/- 0.02 m

Elevation (ft.): 938.8 +/- 0.1 ft.

Ground Water Depth (ft.): Ground water not encountered

Ground Water Elevation (ft.):

Site: Snow covered field at natural grade.

Drilling Method: 9-inch flight auger

Started: 1/25/08 9:20 AM

Drilling Contractor: Braun Intertec

Completed: 1/25/08 12:10 PM

Drill Rig: CME-750

Logged By: J.D. Lehr

DRILLING & SAMPLING

TEST RESULTS (%)

Geologic Interpretation
Economic Classification

Graphic Log	Depth (ft.)	Gravel Per Drill Action	Sample Runs	Sampled Intervals	Total + #4 Sieve	+ 1.5 Inch	1.5 Inch to 3/4 Inch	3/4 Inch to #4 Sieve	Sample Wt. (lbs)	Geologic Interpretation	Economic Classification
2.0	FILL. Silty, sandy, gravelly.	936.8								Fill	
5.0	FILL. Fine to medium sand, slightly dirty. Minor gravel to 2 inches.	933.8									
8.5	FILL. Sandy, rocky. Very rocky (drill action) from 6 to 8.5 feet. One large piece of concrete came up after penetrating.	930.3									
15.0	SAND. Fine to medium sand. Minor gravel to 2 inches.	923.8			15.1	5.6	4.7	4.8	28.3	Superior lobe outwash	17.1 % + #4
20.0	SAND. Fine to coarse sand. Very minor gravel to 2 inches.	918.8			13.5	3.3	3.3	6.8	30.1		
25.0	SAND. Fine to coarse sand. Minor gravel to 1-3/4 inches.	913.8			16.7	2.4	5.4	8.9	29.7		
30.0	SAND. Fine to very coarse sand. Minor gravel to 1-1/2 inches.	908.8			22.4	1.3	5.8	15.3	37.0		
35.0	SAND. Fine to very coarse sand. Very minor gravel to 1-1/2 inches.	903.8			13.9	0.7	1.7	11.5	35.9		
40.0	SAND. Fine to medium sand. Very minor gravel to 1-1/4 inches.	898.8			7.8	0.8	1.4	5.6	22.9		
45.0	SAND & GRAVEL. Fine to coarse sand. Gravel to 2-1/2 inches.	893.8			27.4	13.0	4.1	10.3	32.1		
50.0	SAND. Fine to coarse sand. Minor gravel to 1 inch.	888.8			17.0	1.1	3.7	12.2	40.8		
60.0	SAND. Fine to coarse sand. Minor gravel to 1-1/2 inches.	878.8			18.9	4.6	2.8	11.5	39.2		
65.0	SAND. Fine to coarse sand. Very minor gravel to 2 inches.	873.8									

Small sample volume 45 to 50 and 60 to 65 feet due to augers catching on either rocks or concrete rubble in 6 to 8.5 foot interval while tripping out.

T.D. 65 ft.

LOG A GNNIN08 UMORE PARK DRILLING LOGS.GPJ LOG A GNNIN08.GDT Printed 5/30/08

DRILLING LOG

HOLE NO. GG2600

Page 1 of 1

Property: UMore Park Property

Location: City of Rosemount & Empire Township, Dakota County, Minnesota

UTM Zone 15/NAD83/NAVD88

494,100.32 mE +/- 0.02 m 4,952,599.74 mN +/- 0.02 m

Elevation (ft.): 937.5 +/- 0.1 ft.

Ground Water Depth (ft.): Ground water not encountered

Ground Water Elevation (ft.):

Site: Snow covered field at natural grade.

Drilling Method: 9-inch flight auger

Started: 1/25/08 3:25 PM

Drilling Contractor: Braun Intertec

Completed: 1/25/08 5:00 PM

Drill Rig: CME-750

Logged By: J.D. Lehr

		DRILLING & SAMPLING					TEST RESULTS (%)					Geologic Interpretation	Economic Classification
Graphic Log	Depth (ft.)	Gravel Per Drill Action	Sample Runs	Sampled Intervals	Total + #4 Sieve	+ 1.5 Inch	1.5 Inch to 3/4 Inch	3/4 Inch to #4 Sieve	Sample Wt. (lbs)				
1.0 TOPSOIL. Silty, black.	936.5										Loess		
3.0 SILT. Brown.	934.5												
5.0 SAND. Fine to medium sand, slightly dirty. Minor gravel to 1 inch.	932.5												
10.0 SAND. Fine sand: No gravel.	927.5					6.5	0.5	3.1	2.8	28.9			
15.0 SAND. Fine sand. Very minor gravel to 1-1/2 inches.	922.5												
20.0 SAND. Fine to medium sand. Very minor gravel to 1-1/4 inches.						10.0	0.0	3.4	6.6	28.6			
25.0	912.5												
30.0 SAND & GRAVEL. Fine to very coarse sand. Gravel to 1-1/4 inches.	907.5					29.9	0.0	6.6	23.2	29.5			
35.0 SAND. Fine to coarse sand. Minor gravel to 1-1/4 inches.	902.5					20.9	0.9	2.9	17.2	37.6	Superior lobe outwash		
40.0 SAND & GRAVEL. Fine to coarse sand. Gravel to 4-1/2 inches.	897.5					28.0	10.0	4.3	13.8	41.4			
45.0 SAND. Fine to coarse sand. Minor gravel to 1-1/4 inches.	892.5					16.2	0.7	3.2	12.2	33.4			
50.0 SAND & GRAVEL. Fine to coarse sand. Gravel to 4 inches.	887.5					27.2	15.1	2.2	10.0	33.8			
55.0 SAND. Fine to coarse sand. Minor gravel to 1 inch.	882.5					15.0	0.8	3.4	10.9	27.4			
60.0 SAND. Fine to coarse sand. Minor gravel to 1-1/2 inches.	877.5					17.1	1.0	4.9	11.1	24.9			
65.0 SAND. Fine to coarse sand. Very minor gravel to 1-1/2 inches.	872.5					13.5	1.3	2.2	10.0	21.0			
	T.D. 65 ft.												

16.4 % + #4

LOG A GNNIN08 UMORE PARK DRILLING LOGS.GPJ LOG A GNNIN08.GDT Printed 5/30/08

DRILLING LOG

HOLE NO. GG2800

Page 1 of 1

Property: UMore Park Property

Location: City of Rosemount & Empire Township, Dakota County, Minnesota

UTM Zone 15/NAD83/NAVD88
 494,099.16 mE +/- 0.02 m 4,952,799.63 mN +/- 0.02 m
 Elevation (ft.): 904.1 +/- 0.1 ft.
 Ground Water Depth (ft.): Ground water not encountered
 Ground Water Elevation (ft.):
 Site: Snow covered field at natural grade.

Drilling Method: 9-inch flight auger Started: 1/28/08 7:25 AM
 Drilling Contractor: Braun Intertec Completed: 1/28/08 8:00 AM
 Drill Rig: CME-750 Logged By: J.D. Lehr

DRILLING & SAMPLING					TEST RESULTS (%)					Geologic Interpretation	Economic Classification
Graphic Log	Depth (ft.)	Gravel Per Drill Action	Sample Runs	Sampled Intervals	Total + #4 Sieve	+ 1.5 Inch	1.5 Inch to 3/4 Inch	3/4 Inch to #4 Sieve	Sample Wt. (lbs)		

TOPSOIL. Silty, black.											Loess	
10.0	894.1											
SILT. Sandy 15 to 20 feet, brown.												
20.0	884.1											
SAND. Fine sand. No gravel.											Superior lobe outwash	
25.0	879.1											
No samples taken. 20 feet of overburden and no gravel 20 to 25 feet.												
				T.D. 25 ft.								

LOG A GNIN08 UMORE PARK DRILLING LOGS.GPJ LOG A GNIN08.GDT Printed 5/30/08

DRILLING LOG

HOLE NO. GG3000

Page 1 of 1

Property: UMore Park Property

Location: City of Rosemount & Empire Township, Dakota County, Minnesota

UTM Zone 15/NAD83/NAVD88
 494,099.69 mE +/- 0.02 m 4,952,999.88 mN +/- 0.02 m
 Elevation (ft.): 910.0 +/- 0.1 ft.
 Ground Water Depth (ft.): 46.0
 Ground Water Elevation (ft.): 864.0
 Site: Snow covered corn stubble field at natural grade.

Drilling Method: 9-inch flight auger Started: 1/28/08 8:50 AM
 Drilling Contractor: Braun Intertec Completed: 1/28/08 10:05 AM
 Drill Rig: CME-750 Logged By: J.D. Lehr

Description	Elevation (ft.)	Depth (ft.)	Gravel Per Drill Action	Sample Runs	Sampled Intervals	TEST RESULTS (%)					Geologic Interpretation	Economic Classification
						Total + #4 Sieve	+ 1.5 Inch	1.5 Inch to 3/4 Inch	3/4 Inch to #4 Sieve	Sample Wt. (lbs)		
TOPSOIL. Silty, black.											Loess	
6.0	904.0	5										
SILT. Brown. Lower contact based on drill action.	901.0										Superior lobe outwash	19.4% + #4
9.0	901.0											
SAND. Fine to coarse sand, dirty. Very minor gravel to 1-1/2 inches.	900.0	10										
15.0	895.0	15										
SAND. Fine to medium sand, slightly dirty. No gravel.	895.0											
20.0	890.0	20				3.6	0.0	0.4	3.2	35.9		
SAND. Fine to coarse sand. Very minor gravel to 1 inch.	885.0	25										
SAND & GRAVEL. Fine to coarse sand. Gravel to 3 inches.	880.0	30				32.1	10.6	8.5	13.0	28.4		
SAND & GRAVEL. Fine to coarse sand. Gravel to 3-1/2 inches.	875.0	35				39.4	18.5	6.6	14.3	36.4		
SAND & GRAVEL. Fine to coarse sand. Gravel to 3 inches.	870.0	40				30.9	6.9	6.6	17.3	36.1		
SAND. Fine to coarse sand. Minor gravel to 3-1/2 inches.	865.0	45				22.8	6.1	5.5	11.2	27.8		
SAND. Fine to very coarse sand. Very minor gravel to 1 inch.	865.0	45										
		50										
		55										
		60										
		65										
		T.D.										
		65 ft.										
Estimated 10 to 15 percent gravel from 45 to 65 feet.												

LOG A GNNIN08 UMORE PARK DRILLING LOGS.GPJ LOG A GNNIN08.GDT Printed 5/30/08

DRILLING LOG

HOLE NO. GG3200

Page 1 of 1

Property: UMore Park Property

Location: City of Rosemount & Empire Township, Dakota County, Minnesota

UTM Zone 15/NAD83/NAVD88

494,111.13 mE +/- 0.02 m 4,953,277.23 mN +/- 0.02 m

Elevation (ft.): 928.3 +/- 0.1 ft.

Ground Water Depth (ft.): 63.0

Ground Water Elevation (ft.): 865.3

Site: Snow covered grassy area next to test driving track at approximately natural grade.

Drilling Method: 9-inch flight auger

Started: 2/4/08 11:10 AM

Drilling Contractor: Braun Intertec

Completed: 2/4/08 12:30 PM

Drill Rig: CME-750

Logged By: J.D. Lehr

Depth (ft.)	Graphic Log	Gravel Per Drill Action	Sample Runs	Sampled Intervals	TEST RESULTS (%)					Geologic Interpretation	Economic Classification	
					Total + #4 Sieve	+ 1.5 Inch	1.5 Inch to 3/4 Inch	3/4 Inch to #4 Sieve	Sample Wt. (lbs)			
1.5	TOPSOIL. Silty, black.										Loess	
3.0	SILT. Brown.											
5.0	SAND. Fine to medium sand. Very minor gravel to 1 inch.				7.5	0.0	5.2	2.4	27.6	Superior lobe outwash	30.5 % + #4	
10.0	SAND. Fine sand: Very minor gravel to 1-1/2 inches.				38.4	18.4	10.5	9.6	36.2			
15.0	SAND & GRAVEL. Fine to medium sand. Gravel to 2-1/2 inches.				45.5	11.7	14.3	19.4	38.4			
20.0	GRAVEL & SAND. Fine to coarse sand. Gravel to 3 inches.				31.2	2.9	8.8	19.5	28.1			
25.0	SAND & GRAVEL. Fine to very coarse sand. Gravel to 1-1/2 inches.				37.3	5.9	5.6	25.8	47.5			
30.0	SAND & GRAVEL. Fine to very coarse sand. Gravel to 3 inches. High percentage pea gravel.				30.7	5.1	7.7	17.9	40.7			
35.0					32.2	3.9	5.8	22.5	27.5			
40.0	SAND. Fine to coarse sand. Very minor gravel to 1-1/2 inches.											
45.0	SAND. Fine to coarse sand. Very minor trace gravel to 3/4 inch.											
55.0	SAND. Fine to coarse sand. Very minor gravel to 3/4 inch.											
60.0	SAND. Fine to very coarse sand. Very minor gravel to 1 inch.											
65.0	T.D. 65 ft.											

LOG A GNNIN08 UMORE PARK DRILLING LOGS.GPJ LOG A GNNIN08.GDT Printed 5/30/08

DRILLING LOG

HOLE NO. GG3400

Page 1 of 1

Property: UMore Park Property

Location: City of Rosemount & Empire Township, Dakota County, Minnesota

UTM Zone 15/NAD83/NAVD88

494,100.80 mE +/- 0.02 m 4,953,400.13 mN +/- 0.02 m

Elevation (ft.): 935.3 +/- 0.1 ft.

Ground Water Depth (ft.): Ground water not encountered

Ground Water Elevation (ft.):

Site: Snow covered grassy area next to test driving track at approximately natural grade.

Drilling Method: 9-inch flight auger

Started: 2/4/08 1:05 PM

Drilling Contractor: Braun Intertec

Completed: 2/4/08 2:45 PM

Drill Rig: CME-750

Logged By: J.D. Lehr

DRILLING & SAMPLING

TEST RESULTS (%)

Geologic Interpretation

Economic Classification

Graphic Log	Depth (ft.)	Gravel Per Drill Action	Sample Runs	Sampled Intervals	Total + #4 Sieve	+ 1.5 Inch	1.5 Inch to 3/4 Inch	3/4 Inch to #4 Sieve	Sample Wt. (lbs)	Geologic Interpretation	Economic Classification
	5									Fill	
	11.0										
	15.0										
	20.0				3.8	0.0	1.1	2.7	38.3		
	25.0										
	30.0				35.2	2.4	7.9	24.8	34.9		
	35.0										
	40.0				34.8	6.2	8.2	20.4	39.7		
	45.0									Superior lobe outwash	
	50.0										
	55.0										
	60.0										
	65.0										
	T.D. 65 ft.										

LOG A GNNIN08 UMORE PARK DRILLING LOGS.GPJ LOG A GNNIN08.GDT Printed 5/30/08