

DRILLING LOG

HOLE NO. F0450

Page 1 of 1

Property: UMore Park Property

Location: City of Rosemount & Empire Township, Dakota County, Minnesota

UTM Zone 15/NAD83/NAVD88

491,401.98 mE +/- 0.02 m 4,950,449.85 mN +/- 0.02 m

Elevation (ft.): 948.9 +/- 0.1 ft.

Ground Water Depth (ft.): Ground water not encountered

Ground Water Elevation (ft.):

Site: Grassy field road at natural grade.

Drilling Method: 9-inch flight auger

Started: 4/21/08 7:25 AM

Drilling Contractor: Braun Intertec

Completed: 4/21/08 8:20 AM

Drill Rig: CME-750

Logged By: J.D. Lehr

Depth (ft.)	Graphic Log	Gravel Per Drill Action	Sample Runs	Sampled Intervals	TEST RESULTS (%)					Geologic Interpretation	Economic Classification	
					Total + #4 Sieve	+ 1.5 Inch	1.5 Inch to 3/4 Inch	3/4 Inch to #4 Sieve	Sample Wt. (lbs)			
1.5	TOPSOIL. Silty, black.										Loess	
4.0	SILT. Brown.											
5.0	SAND & GRAVEL. Fine to coarse sand. Gravel to 1-3/4 inches.				20.7	2.4	5.4	12.9	42.6		Superior lobe outwash	22.1 % + #4
10.0	SAND. Fine to coarse sand. Minor gravel to 1-1/2 inches.				15.4	3.1	5.6	6.6	29.5			
15.0	SAND. Fine to coarse sand. Minor gravel to 1-3/4 inches.				28.4	10.5	7.4	10.5	32.1			
20.0	SAND & GRAVEL. Fine to very coarse sand. Gravel to 2 inches.				25.9	9.0	5.6	11.4	30.3			
25.0	SAND. Fine to very coarse sand. Minor gravel to 1-1/2 inches.				20.7	0.7	6.9	13.1	35.6			
30.0	SAND & GRAVEL. Fine to very coarse sand. Gravel to 2 inches.				26.5	6.8	5.3	14.5	38.8			
35.0	SAND. Fine to very coarse sand. Minor gravel to 1-3/4 inches.				18.6	1.7	2.1	14.8	31.1			
42.0												
44.0	TILL. Silty, red.										Till	
	T.D. 44 ft.											

LOG A GNIN08 UMORE PARK DRILLING LOGS.GPJ LOG A GNIN08.GDT Printed 5/30/08

DRILLING LOG

HOLE NO. F0650

Page 1 of 1

Property: UMore Park Property

Location: City of Rosemount & Empire Township, Dakota County, Minnesota

UTM Zone 15/NAD83/NAVD88
 491,399.84 mE +/- 0.02 m 4,950,649.96 mN +/- 0.02 m
 Elevation (ft.): 947.6 +/- 0.1 ft.
 Ground Water Depth (ft.): 62.0
 Ground Water Elevation (ft.): 885.6
 Site: Grassy field road at natural grade.

Drilling Method: 9-inch flight auger Started: 4/18/08 10:30 AM
 Drilling Contractor: Braun Intertec Completed: 4/18/08 12:00 PM
 Drill Rig: CME-750 Logged By: J.D. Lehr

		DRILLING & SAMPLING				TEST RESULTS (%)					Geologic Interpretation	Economic Classification
Graphic Log	Depth (ft.)	Gravel Per Drill Action	Sample Runs	Sampled Intervals	Total + #4 Sieve	+ 1.5 Inch	1.5 Inch to 3/4 Inch	3/4 Inch to #4 Sieve	Sample Wt. (lbs)			
1.5 TOPSOIL. Silty, black.	946.1										Loess	
3.0 SILT. Brown.	944.6											
5.0 SAND & GRAVEL. Fine to coarse sand. Gravel to 1 inch.	942.6										Superior lobe outwash	25.0 % + #4
SAND & GRAVEL. Medium to very coarse sand. Gravel to 1 inch. High percentage pea gravel.					31.7	0.0	2.6	29.1	51.5			
15.0	932.6				34.3	0.0	1.6	32.7	30.0			
SAND. Fine to coarse sand. Very minor gravel to 1 inch.					11.5	0.0	2.6	8.9	27.3			
20.0	927.6				2.1	0.0	0.0	2.1	18.1			
SAND. Fine sand. Very minor trace gravel to 1/2 inch.					39.1	1.2	8.4	29.6	32.7			
25.0	922.6				33.9	0.0	6.3	27.6	26.7			
SAND & GRAVEL. Fine to very coarse sand. Gravel to 1-1/2 inches.					22.0	7.2	3.9	11.0	26.6			
30.0	917.6				22.3	4.0	5.4	12.9	20.7			
SAND & GRAVEL. Fine to very coarse sand. Gravel to 1 inch.												
35.0	912.6											
SAND. Fine to coarse sand. Minor gravel to 3-1/2 inches.												
40.0	907.6											
SAND. Fine to coarse sand. Minor gravel to 2 inches.												
45.0	902.6											
SAND. Fine sand. No gravel.												
55.0	892.6											
SAND. Fine to coarse sand. Very minor gravel to 3/4 inch.												
60.0	887.6											
SAND. Fine sand. No gravel.												
65.0	882.6											
	T.D. 65 ft.											

LOG A GNNIN08 UMORE PARK DRILLING LOGS.GPJ LOG A GNNIN08.GDT Printed 5/30/08

DRILLING LOG

HOLE NO. F0750

Page 1 of 2

Property: UMore Park Property

Location: City of Rosemount & Empire Township, Dakota County, Minnesota

UTM Zone 15/NAD83/NAVD88
 491,400.09 mE +/- 0.02 m 4,950,767.13 mN +/- 0.02 m
 Elevation (ft.): 949.1 +/- 0.1 ft.
 Ground Water Depth (ft.): Ground water level uncertain
 Ground Water Elevation (ft.):
 Site: Grassy field road at natural grade.

Drilling Method: 4x6 Rotasonic Started: 4/22/08 9:55 AM
 Drilling Contractor: Traut Wells Completed: 4/22/08 11:50 AM
 Drill Rig: Versasonic Logged By: J.D. Lehr

DRILLING & SAMPLING					TEST RESULTS (%)					Geologic Interpretation	Economic Classification
Graphic Log	Depth (ft.)	Gravel Per Drill Action	Sample Runs	Sampled Intervals	Total + #4 Sieve	+ 1.5 Inch	1.5 Inch to 3/4 Inch	3/4 Inch to #4 Sieve	Sample Wt. (lbs)		

4.0	945.1										Loess		
TOPSOIL. Silty, black.													
7.5	941.6												
SILT. Sandy towards bottom of interval, brown.													
15.0	934.1				16.9	0.0	4.1	12.8	29.8		Superior lobe outwash	22.0 % + #4	
SAND. Fine to coarse sand. Minor gravel to 2 inches.													
20.0	929.1				8.6	0.0	2.4	6.3	37.5				
SAND. Fine sand. No gravel.													
35.0	914.1				20.0	1.0	5.7	13.3	46.3				
SAND. Fine to coarse sand. Very minor gravel to 1-1/2 inches. Very poor recovery from 20 to 40 feet - only 5.5 feet.													
40.0	909.1												
SAND & GRAVEL. Fine to very coarse sand. Gravel to 1-3/4 inches. Very poor recovery from 20 to 40 feet - only 5.5 feet.													
45.0	904.1				36.9	4.0	8.4	24.5	27.4				
SAND & GRAVEL. Fine to very coarse sand, slightly dirty. Gravel to 2-1/2 inches.													
50.0	899.1				42.7	4.1	7.4	31.2	47.9				
GRAVEL & SAND. Fine to very coarse sand, slightly dirty. Gravel to 2-1/2 inches.													
55.0	894.1				20.2	0.0	4.1	16.0	32.6				
SAND. Medium to very coarse sand. Minor gravel to 1 inch.													
58.0	891.1												
SAND. Fine sand. No gravel.													
60.0	889.1										Lacustrine		
SILT. Sandy (very fine), brown.													
70.0	879.1										Superior lobe outwash		
SAND. Medium to coarse sand. Very minor trace gravel to 1 inch.													
SAND. Fine to coarse sand. No gravel.													

Continued Next Page

LOG A GNNIN08 UMORE PARK DRILLING LOGS.GPJ LOG A GNNIN08.GDT Printed 5/30/08

DRILLING LOG

HOLE NO. F0750

Page 2 of 2

Property: UMore Park Property

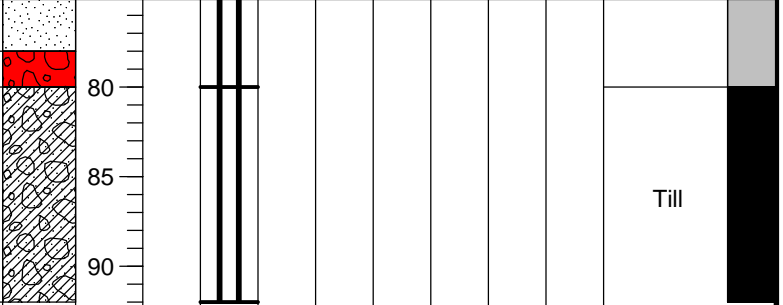
Location: City of Rosemount & Empire Township, Dakota County, Minnesota

UTM Zone 15/NAD83/NAVD88
 491,400.09 mE +/- 0.02 m 4,950,767.13 mN +/- 0.02 m
 Elevation (ft.): 949.1 +/- 0.1 ft.
 Ground Water Depth (ft.): Ground water level uncertain
 Ground Water Elevation (ft.):
 Site: Grassy field road at natural grade.

Drilling Method: 4x6 Rotasonic Started: 4/22/08 9:55 AM
 Drilling Contractor: Traut Wells Completed: 4/22/08 11:50 AM
 Drill Rig: Versasonic Logged By: J.D. Lehr

DRILLING & SAMPLING					TEST RESULTS (%)					Geologic Interpretation	Economic Classification
Graphic Log	Depth (ft.)	Gravel Per Drill Action	Sample Runs	Sampled Intervals	Total + #4 Sieve	+ 1.5 Inch	1.5 Inch to 3/4 Inch	3/4 Inch to #4 Sieve	Sample Wt. (lbs)		

78.0 **SAND.** Fine to coarse sand. No gravel. (continued) 871.1
 80.0 **SAND & GRAVEL.** Medium to very coarse sand. Gravel to 2 inches. 869.1
TILL. Clayey, gray.
 92.0 857.1



T.D.
92 ft.

LOG A GNIN08 UMORE PARK DRILLING LOGS.GPJ LOG A GNIN08.GDT Printed 5/30/08

DRILLING LOG

HOLE NO. F1150

Page 1 of 1

Property: UMore Park Property

Location: City of Rosemount & Empire Township, Dakota County, Minnesota

UTM Zone 15/NAD83/NAVD88

491,399.27 mE +/- 0.02 m 4,951,149.50 mN +/- 0.02 m

Elevation (ft.): 944.1 +/- 0.1 ft.

Ground Water Depth (ft.): 59.0

Ground Water Elevation (ft.): 885.1

Site: Snow covered plowed field at natural grade.

Drilling Method: 9-inch flight auger

Started: 2/22/08 8:50 AM

Drilling Contractor: Braun Intertec

Completed: 2/22/08 10:05 AM

Drill Rig: CME-750

Logged By: J.D. Lehr

		DRILLING & SAMPLING				TEST RESULTS (%)				Geologic Interpretation	Economic Classification
Graphic Log	Depth (ft.)	Gravel Per Drill Action	Sample Runs	Sampled Intervals	Total + #4 Sieve	+ 1.5 Inch	1.5 Inch to 3/4 Inch	3/4 Inch to #4 Sieve	Sample Wt. (lbs)		
1.0	TOPSOIL. Silty, dark brown.									Loess	
2.5	SILT. Brown.										
5.0	SAND. Fine sand. No gravel.									Superior lobe outwash	13.7% + #4
	SAND. Fine to coarse sand. Very minor gravel to 1-1/2 inches.				9.6	1.3	3.0	5.3	30.8		
20.0											
	SAND. Fine to coarse sand. Minor gravel to 2 inches.				20.5	4.1	5.0	11.4	31.2		
25.0											
	SAND. Fine to coarse sand. Minor gravel to 3 inches.				20.0	6.4	5.4	8.2	26.8		
30.0											
	SAND. Fine to coarse sand. Very minor gravel to 1-3/4 inches.				14.8	3.0	3.4	8.4	31.8		
35.0											
	SAND. Fine to very coarse sand. Minor gravel to 2 inches.				16.9	6.9	2.2	7.8	26.5		
40.0											
	SAND. Fine to very coarse sand. Very minor gravel to 1-1/2 inches.				10.8	0.0	3.9	7.0	28.6		
45.0											
	SAND. Fine to medium sand. No gravel.										
65.0											
	T.D. 65 ft.										

LOG A GNNIN08 UMORE PARK DRILLING LOGS.GPJ LOG A GNNIN08.GDT Printed 5/30/08

DRILLING LOG

HOLE NO. F1350

Page 1 of 1

Property: UMore Park Property

Location: City of Rosemount & Empire Township, Dakota County, Minnesota

UTM Zone 15/NAD83/NAVD88

491,410.47 mE +/- 0.02 m 4,951,347.34 mN +/- 0.02 m

Elevation (ft.): 940.1 +/- 0.1 ft.

Ground Water Depth (ft.): 55.0

Ground Water Elevation (ft.): 885.1

Site: Snow covered plowed field at natural grade.

Drilling Method: 9-inch flight auger

Started: 2/22/08 10:10 AM

Drilling Contractor: Braun Intertec

Completed: 2/22/08 11:40 AM

Drill Rig: CME-750

Logged By: J.D. Lehr

DRILLING & SAMPLING

TEST RESULTS (%)

Geologic Interpretation
Economic Classification

Graphic Log	Depth (ft.)	Gravel Per Drill Action	Sample Runs	Sampled Intervals	Total + #4 Sieve	+ 1.5 Inch	1.5 Inch to 3/4 Inch	3/4 Inch to #4 Sieve	Sample Wt. (lbs)	Geologic Interpretation	Economic Classification
TOPSOIL. Silty, black.	7.0									Loess	
	933.1										
SILT. Brown.	13.0									Superior lobe outwash	20.1 % + #4
	927.1										
SAND & GRAVEL. Fine to coarse sand, dirty. Gravel to 3 inches.	15.0										
SAND. Fine to coarse sand, dirty. Minor gravel to 1-1/2 inches.	20.0				26.9	7.5	6.2	13.3	27.9		
SAND. Fine to medium sand. Very minor gravel to 1-1/2 inches.	25.0				5.9	0.0	1.2	4.7	15.1		
SAND. Fine to very coarse sand. Minor gravel to 1-1/4 inches.	30.0				23.7	0.0	4.7	19.0	21.6		
SAND & GRAVEL. Fine to very coarse sand. Gravel to 3-1/2 inches.	35.0				29.8	11.6	2.8	15.4	23.6		
SAND. Fine to very coarse sand. Minor gravel to 2 inches. Small sample volume.	40.0				23.6	5.0	6.2	12.4	38.8		
SAND. Medium to very coarse sand. Very minor gravel to 1 inch.	45.0				8.9	0.0	1.3	7.6	20.4		
SAND. Medium to very coarse sand. Minor gravel to 1-1/4 inches, mostly pea gravel.	55.0				12.5	0.0	0.9	11.5	22.7		
SAND & GRAVEL. Medium to very coarse sand. Gravel to 2 inches.	60.0				17.6	0.0	1.5	16.1	30.9		
	65.0				25.7	0.8	6.8	18.1	36.0		
T.D. 65 ft.											

LOG A GNNIN08 UMORE PARK DRILLING LOGS.GPJ LOG A GNNIN08.GDT Printed: 5/30/08

DRILLING LOG

HOLE NO. F1550

Page 1 of 1

Property: UMore Park Property

Location: City of Rosemount & Empire Township, Dakota County, Minnesota

UTM Zone 15/NAD83/NAVD88

491,400.36 mE +/- 0.02 m 4,951,543.99 mN +/- 0.02 m

Elevation (ft.): 950.9 +/- 0.1 ft.

Ground Water Depth (ft.): Ground water not encountered

Ground Water Elevation (ft.):

Site: Edge of plowed field at natural grade.

Drilling Method: 9-inch flight auger

Started: 4/15/08 3:45 PM

Drilling Contractor: Braun Intertec

Completed: 4/15/08 5:15 PM

Drill Rig: CME-750

Logged By: J.D. Lehr

DRILLING & SAMPLING

TEST RESULTS (%)

Geologic Interpretation

Economic Classification

Graphic Log	Depth (ft.)	Gravel Per Drill Action	Sample Runs	Sampled Intervals	Total + #4 Sieve	+ 1.5 Inch	1.5 Inch to 3/4 Inch	3/4 Inch to #4 Sieve	Sample Wt. (lbs)	Geologic Interpretation	Economic Classification
2.0 TOPSOIL. Silty, black.	948.9									Loess	
4.0 SILT. Sandy towards bottom of interval, brown.	946.9										
5.0 SAND & GRAVEL. Fine to medium sand, dirty. Gravel to 2 inches.	945.9									Superior lobe outwash	16.7 % + #4
SAND. Fine to medium sand. Very minor gravel to 1 inch.					11.5	2.4	2.9	6.2	37.6		
20.0	930.9										
SAND. Fine to coarse sand. Minor gravel to 2 inches.					16.7	6.4	3.1	7.2	29.0		
25.0	925.9										
SAND. Fine to coarse sand. Very minor gravel to 1-3/4 inches.					14.0	2.2	3.4	8.4	31.4		
					9.9	2.9	1.7	5.3	26.3		
					11.4	6.5	1.0	3.9	30.2		
40.0	910.9										
SAND. Fine to coarse sand. Very minor gravel to 2 inches.					10.4	3.4	3.8	3.1	23.8		
45.0	905.9										
SAND. Fine to coarse sand. Minor gravel to 1-3/4 inches.					21.1	3.2	7.5	10.4	26.8		
50.0	900.9										
SAND & GRAVEL. Fine to coarse sand. Gravel to 2 inches.					28.5	8.1	7.6	12.8	32.3		
55.0	895.9										
SAND & GRAVEL. Fine to coarse sand. Gravel to 2-1/2 inches.					32.5	15.4	5.8	11.4	41.0		
60.0	890.9										
SAND. Fine to coarse sand. Minor gravel to 4 inches. Refusal on large boulder at 64 feet.					24.5	11.6	3.6	9.3	27.1		
	886.9										
T.D.	64 ft.										

LOG A GNIN08 UMORE PARK DRILLING LOGS.GPJ LOG A GNIN08.GDT Printed 5/30/08

DRILLING LOG

HOLE NO. F1850

Page 1 of 2

Property: UMore Park Property

Location: City of Rosemount & Empire Township, Dakota County, Minnesota

UTM Zone 15/NAD83/NAVD88
 491,401.85 mE +/- 0.02 m 4,951,848.42 mN +/- 0.02 m
 Elevation (ft.): 952.4 +/- 0.1 ft.
 Ground Water Depth (ft.): 60.0
 Ground Water Elevation (ft.): 892.4
 Site: Snow covered field at natural grade.

Drilling Method: 4x6 Rotasonic Started: 2/8/08 1:00 PM
 Drilling Contractor: Traut Wells Completed: 2/8/08 2:50 PM
 Drill Rig: Versasonic Logged By: J.D. Lehr

		DRILLING & SAMPLING					TEST RESULTS (%)				Geologic Interpretation	Economic Classification
Graphic Log	Depth (ft.)	Gravel Per Drill Action	Sample Runs	Sampled Intervals	Total + #4 Sieve	+ 1.5 Inch	1.5 Inch to 3/4 Inch	3/4 Inch to #4 Sieve	Sample Wt. (lbs)			
2.0	TOPSOIL. Silty, black.	950.4									Loess	
5.5	SILT. Brown.	946.9										
10.0	SAND. Fine to coarse sand, dirty from 5.5 to 6.5 feet. Minor gravel to 1-3/4 inches.	942.4		↑	19.4	3.0	4.3	12.0	20.8		Superior lobe outwash	22.6 % + #4
	SAND. Fine to coarse sand. Very minor gravel to 2 inches.			↓	8.1	1.6	1.6	5.0	28.4			
20.0		932.4		↓	8.8	0.0	3.0	5.8	26.4			
25.0	SAND. Fine to coarse sand, slightly dirty. Very minor gravel to 1-1/2 inches.	927.4		↑	9.8	0.0	2.2	7.6	25.3			
30.0	SAND. Fine to coarse sand. Minor gravel to 2 inches.	922.4		↓	22.7	2.4	7.8	12.5	22.0			
	SAND. Fine to coarse sand. Very minor gravel to 2 inches.			↑	8.7	1.0	1.8	5.9	17.7			
38.0		914.4		↓	8.7	0.0	0.8	7.8	17.7			
40.0	SAND. Very fine to fine sand. Very minor pea gravel.	912.4		↑	37.6	1.8	7.5	28.3	39.7			
45.0	SAND & GRAVEL. Medium to very coarse sand. Gravel to 2 inches.	907.4		↓	24.5	2.1	6.0	16.4	30.5			
50.0	SAND. Fine to very coarse sand. Minor gravel to 2 inches.	902.4		↑	24.3	3.5	6.9	13.9	29.1			
53.0	SAND. Fine to medium sand. Very minor gravel to 1/2 inch.	899.4		↓	32.1	1.2	6.4	24.5	47.4			
60.0	SAND & GRAVEL. Fine to coarse sand. Gravel to 1-3/4 inches.	892.4		↑								
	NO RECOVERY. "Coarse gravel" according to driller.			↓								
70.0		882.4										
75.0	SAND. Fine to coarse sand. Very minor gravel to 1 inch.	877.4		↑	11.6	0.0	1.0	10.5	28.9			

Continued Next Page

LOG A GNNIN08 UMORE PARK DRILLING LOGS.GPJ LOG A GNNIN08.GDT Printed 5/30/08

DRILLING LOG

HOLE NO. F1850

Page 2 of 2

Property: UMore Park Property

Location: City of Rosemount & Empire Township, Dakota County, Minnesota

UTM Zone 15/NAD83/NAVD88
 491,401.85 mE +/- 0.02 m 4,951,848.42 mN +/- 0.02 m
 Elevation (ft.): 952.4 +/- 0.1 ft.
 Ground Water Depth (ft.): 60.0
 Ground Water Elevation (ft.): 892.4
 Site: Snow covered field at natural grade.

Drilling Method: 4x6 Rotasonic Started: 2/8/08 1:00 PM
 Drilling Contractor: Traut Wells Completed: 2/8/08 2:50 PM
 Drill Rig: Versasonic Logged By: J.D. Lehr

Depth (ft.)	Graphic Log	Gravel Per Drill Action	Sample Runs	Sampled Intervals	TEST RESULTS (%)					Geologic Interpretation	Economic Classification
					Total + #4 Sieve	+ 1.5 Inch	1.5 Inch to 3/4 Inch	3/4 Inch to #4 Sieve	Sample Wt. (lbs)		
80.0	SAND. Very fine to coarse sand. Very minor gravel to 1-1/4 inches.				9.2	0.0	1.4	7.8	30.9	Older outwash	
85.0	SAND. Fine to very coarse sand. Minor gravel to 1-1/2 inches, mostly pea gravel.				15.3	0.0	1.0	14.3	31.1		
90.0	SAND. Fine to very coarse sand. Minor gravel to 2-1/4 inches.				20.1	2.7	2.9	14.5	29.3		
95.0	SAND & GRAVEL. Medium to very coarse sand. Gravel to 3-1/2 inches.				27.9	9.7	4.8	13.4	23.3		
99.0	SAND. Fine to coarse sand. Very minor gravel to 1/2 inch.				6.6	0.0	0.1	6.5	26.7		
103.0	SAND. Very fine sand. No gravel.										
115.0	GRAVEL & SAND. Medium to very coarse sand, slightly dirty to very dirty - overall dirty. Gravel to 4 inches.				30.0	12.4	6.8	10.7	48.6		
120.0	GRAVEL & SAND. Very fine to very coarse sand, extremely dirty & iron stained. Gravel to 4 inches.				65.7	24.5	18.1	23.2	56.1		
125.0	SAND & GRAVEL. Fine to very coarse sand, very dirty from 122 to 124 feet, iron stained. Gravel to 4 inches.				59.7	19.4	16.0	24.3	52.3		
128.0	SAND. Medium to very coarse sand, iron stained. Minor gravel to 1-1/2 inches.										
131.0	SAND. Very fine sand, dirty. No gravel.										
135.0	SAND. Fine to coarse sand, slightly dirty & iron stained. Very minor pea gravel. 3-inch diameter clay ball present at 134 feet.										
140.0	SAND. Very fine to fine sand, iron stained. No gravel.										
	T.D. 140 ft.										

Ground water level approximate.

LOG A GNIN08 UMORE PARK DRILLING LOGS.GPJ LOG A GNIN08.GDT Printed 5/30/08

DRILLING LOG

HOLE NO. F2150

Page 1 of 1

Property: UMore Park Property

Location: City of Rosemount & Empire Township, Dakota County, Minnesota

UTM Zone 15/NAD83/NAVD88

491,453.88 mE +/- 0.02 m 4,952,131.58 mN +/- 0.02 m

Elevation (ft.): 953.3 +/- 0.1 ft.

Ground Water Depth (ft.): Ground water not encountered

Ground Water Elevation (ft.):

Site: Grassy field road at natural grade.

Drilling Method: 9-inch flight auger

Started: 4/14/08 12:35 PM

Drilling Contractor: Braun Intertec

Completed: 4/14/08 2:25 PM

Drill Rig: CME-750

Logged By: J.D. Lehr

Depth (ft.)	Graphic Log	Gravel Per Drill Action	Sample Runs	Sampled Intervals	TEST RESULTS (%)					Geologic Interpretation	Economic Classification
					Total + #4 Sieve	+ 1.5 Inch	1.5 Inch to 3/4 Inch	3/4 Inch to #4 Sieve	Sample Wt. (lbs)		
1.5	TOPSOIL. Silty, black.									Loess	
4.5	SILT. Brown.										
5.0	SAND. Fine to coarse sand. Minor gravel to 3/4 inch.									Superior lobe outwash	16.1% + #4
10.0	SAND. Fine to medium sand. Very minor gravel to 2 inches.				10.1	1.5	1.9	6.7	29.8		
15.0	SAND. Fine to coarse sand. Very minor gravel to 1 inch.										
20.0	SAND. Fine to coarse sand. Very minor gravel to 2 inches.				10.7	1.8	2.1	6.8	29.6		
25.0	SAND. Fine to coarse sand. Very minor gravel to 3/4 inch.										
30.0	SAND. Fine to very coarse sand. Minor gravel to 3-1/2 inches.				21.7	8.9	4.3	8.4	34.1		
35.0	SAND. Fine to very coarse sand. Minor gravel to 1-3/4 inches.				23.0	2.9	3.7	16.4	36.0		
40.0	SAND. Fine to medium sand. Very minor gravel to 1-3/4 inches.				14.5	3.0	2.5	9.0	30.7		
45.0	SAND. Fine to medium sand. Very minor gravel to 2 inches.				10.7	4.8	1.3	4.7	21.8		
50.0	SAND. Fine to very coarse sand. Minor gravel to 2-1/4 inches.				21.5	2.9	5.0	13.6	37.9		
55.0	SAND. Fine to coarse sand. Minor gravel to 1-1/4 inches.				20.7	0.0	3.5	17.2	38.2		
60.0	SAND. Fine to very coarse sand. Minor gravel to 3-1/2 inches.				24.6	6.6	4.6	13.4	37.3		
65.0	SAND. Fine sand. Very minor gravel to 3/4 inch.										
	T.D. 65 ft.										

LOG A GNIN08 UMORE PARK DRILLING LOGS.GPJ LOG A GNIN08.GDT Printed 5/30/08

Property: UMore Park Property	Location: City of Rosemount & Empire Township, Dakota County Minnesota
-------------------------------	--

UTM Zone 15/NAD83/NAVD88 491,400.81 mE +/- 0.02 m 4,952,390.45 mN +/- 0.02 m Elevation (ft.): 952.8 +/- 0.1 ft. Ground Water Depth (ft.): 65.0 Ground Water Elevation (ft.): 887.8 Site: Along field road at natural grade.	Drilling Method: 4x6 Rotasonic Started: 1/23/08 9:20 AM Drilling Contractor: Traut Wells Completed: 1/23/08 11:40 AM Drill Rig: Versasonic Logged By: J.D. Lehr
--	--

Description	Depth (ft.)	DRILLING & SAMPLING					TEST RESULTS (%)					Geologic Interpretation	Economic Classification
		Graphic Log	Gravel Per Drill Action	Sample Runs	Sampled Intervals	Total + #4 Sieve	+ 1.5 Inch	1.5 Inch to 3/4 Inch	3/4 Inch to #4 Sieve	Sample Wt. (lbs)			
TOPSOIL. Silty, black.	4.0	948.8	[Pattern]									Loess	
6.0 SILT. Brown.		946.8	[Pattern]										
SAND. Fine to coarse sand. Minor gravel to 1-3/4 inches.	10.0	942.8	[Pattern]		↑	17.3	2.4	5.0	10.0	24.6		Superior lobe outwash	21.5% + #4
SAND. Fine to coarse sand. Minor gravel to 3-1/2 inches.		932.8	[Pattern]		↑	23.7	4.5	5.7	13.5	41.4			
		927.8	[Pattern]		↑	18.0	2.6	5.2	10.2	40.8			
SAND & GRAVEL. Fine to very coarse sand, slightly dirty. Gravel to 3-1/2 inches.	25.0	927.8	[Pattern]		↑	28.4	8.2	7.1	13.0	40.5			
SAND. Fine to coarse sand. Minor gravel to 2-1/2 inches.		916.8	[Pattern]		↑	18.2	2.7	4.6	11.0	26.3			
		916.8	[Pattern]		↑	22.6	5.9	5.5	11.2	24.1			
SAND. Very fine to fine sand. No gravel overall, except for very minor gravel to 1/2 inch from 43 to 44 feet.	36.0	916.8	[Pattern]		↓								
		898.8	[Pattern]										
SAND & GRAVEL. Fine to coarse sand, slightly dirty. Gravel to 2-1/2 inches. Concentration of iron-oxide nodules at 57 feet.	58.0	894.8	[Pattern]										
SAND. Fine to medium sand. Very minor gravel to 1 inch.	62.0	890.8	[Pattern]										
SAND. Fine to coarse sand. Minor gravel to 1-1/2 inches.	66.0	886.8	[Pattern]										
SAND. Very fine sand, dirty in places. No gravel.		886.8	[Pattern]										
		886.8	[Pattern]										

Continued Next Page

LOG A GNNIN08 UMORE PARK DRILLING LOGS.GPJ LOG A GNNIN08.GDT Printed 5/30/08

DRILLING LOG

HOLE NO. F2400

Page 2 of 2

Property: UMore Park Property

Location: City of Rosemount & Empire Township, Dakota County, Minnesota

UTM Zone 15/NAD83/NAVD88
 491,400.81 mE +/- 0.02 m 4,952,390.45 mN +/- 0.02 m
 Elevation (ft.): 952.8 +/- 0.1 ft.
 Ground Water Depth (ft.): 65.0
 Ground Water Elevation (ft.): 887.8
 Site: Along field road at natural grade.

Drilling Method: 4x6 Rotasonic Started: 1/23/08 9:20 AM
 Drilling Contractor: Traut Wells Completed: 1/23/08 11:40 AM
 Drill Rig: Versasonic Logged By: J.D. Lehr

DRILLING & SAMPLING					TEST RESULTS (%)				Geologic Interpretation	Economic Classification
Graphic Log	Depth (ft.)	Gravel Per Drill Action	Sample Runs	Sampled Intervals	Total + #4 Sieve	+ 1.5 Inch	1.5 Inch to 3/4 Inch	3/4 Inch to #4 Sieve		

<p>SAND. Very fine sand, dirty in places. No gravel. (continued)</p>	80									Lacustrine sediment
	85									
<p>105.0</p> <p>SILT. Gray.</p>	847.8									
<p>120.0</p> <p>Sand from 36 to 54 feet too thick to justify sampling deeper than 36 feet.</p>	832.8									
	T.D. 120 ft.									

LOG A GNNN08 UMORE PARK DRILLING LOGS.GPJ LOG A GNNN08.GDT Printed 5/30/08

DRILLING LOG

HOLE NO. F2650

Page 1 of 2

Property: UMore Park Property

Location: City of Rosemount & Empire Township, Dakota County, Minnesota

UTM Zone 15/NAD83/NAVD88

491,400.12 mE +/- 0.02 m 4,952,649.80 mN +/- 0.02 m

Elevation (ft.): 946.5 +/- 0.1 ft.

Ground Water Depth (ft.): 65.0

Ground Water Elevation (ft.): 881.5

Site: Snow covered corn stubble field at natural grade.

Drilling Method: 4x6 Rotasonic

Started: 2/26/08 11:20 AM

Drilling Contractor: Traut Wells

Completed: 2/26/08 2:30 PM

Drill Rig: Versasonic

Logged By: J.D. Lehr

DRILLING & SAMPLING

TEST RESULTS (%)

Geologic Interpretation

Economic Classification

Graphic Log	Depth (ft.)	Gravel Per Drill Action	Sample Runs	Sampled Intervals	Total + #4 Sieve	+ 1.5 Inch	1.5 Inch to 3/4 Inch	3/4 Inch to #4 Sieve	Sample Wt. (lbs)	Geologic Interpretation	Economic Classification
1.0 TOPSOIL. Silty, black.	945.5									Loess	
3.0 SILT. Sandy towards bottom of interval, brown.	943.5										
5.0 SAND & GRAVEL. Fine to coarse sand, slightly dirty. Gravel to 1-1/2 inches.	941.5				12.6	1.7	3.8	7.2	44.3	Superior lobe outwash	20.8 % + #4
10.0 SAND. Fine to medium sand. Very minor gravel to 1 inch.	936.5										
SAND. Fine to coarse sand. Very minor gravel to 2 inches.					13.3	0.5	3.1	9.7	42.3		
20.0 SAND. Fine to coarse sand. Minor gravel to 2 inches.	926.5										
30.0 SAND. Fine to coarse sand. Very minor gravel to 1-1/2 inches.	916.5				17.1	1.7	5.3	10.1	44.7		
40.0 SAND. Fine to coarse sand. Very minor gravel to 1-1/2 inches.	906.5				12.4	0.0	3.5	8.9	42.6		
45.0 SAND. Fine to very coarse sand. Minor gravel to 1 inch.	901.5				18.7	0.0	3.0	15.7	36.0		
50.0 SAND & GRAVEL. Fine to very coarse sand. Gravel to 4 inches.	896.5				38.8	13.6	7.8	17.3	48.9		
56.0 GRAVEL & SAND. Fine to coarse sand. Gravel to 2-1/2 inches. One-inch fragment of iron oxide at 54 feet.	890.5				50.0	12.0	14.5	23.5	42.3		
60.0 SAND. Fine to medium sand. Very minor trace gravel to 1/2 inch.	886.5										
63.0 SILT. Brown.	883.5										
SAND. Very fine sand, slightly dirty to dirty. No gravel.											

Continued Next Page

LOG A GNNIN08 UMORE PARK DRILLING LOGS.GPJ LOG A GNNIN08.GDT Printed 5/30/08

DRILLING LOG

HOLE NO. F2650

Page 2 of 2

Property: UMore Park Property

Location: City of Rosemount & Empire Township, Dakota County County, Minnesota

UTM Zone 15/NAD83/NAVD88
491,400.12 mE +/- 0.02 m 4,952,649.80 mN +/- 0.02 m
Elevation (ft.): 946.5 +/- 0.1 ft.
Ground Water Depth (ft.): 65.0
Ground Water Elevation (ft.): 881.5
Site: Snow covered corn stubble field at natural grade.

Drilling Method: 4x6 Rotasonic Started: 2/26/08 11:20 AM
Drilling Contractor: Traut Wells Completed: 2/26/08 2:30 PM
Drill Rig: Versasonic Logged By: J.D. Lehr

DRILLING & SAMPLING						TEST RESULTS (%)				Geologic Interpretation	Economic Classification
Graphic Log	Depth (ft.)	Gravel Per Drill Action	Sample Runs	Sampled Intervals	Total + #4 Sieve	+ 1.5 Inch	1.5 Inch to 3/4 Inch	3/4 Inch to #4 Sieve	Sample Wt. (lbs)		

84.5	862.0										Lacustrine sediment	
100.0	846.5											
		T.D. 100 ft.										
Ground water level approximate.												

LOG A GNIN08 UMORE PARK DRILLING LOGS.GPJ LOG A GNIN08.GDT Printed 5/30/08

DRILLING LOG

HOLE NO. F2850

Page 1 of 2

Property: UMore Park Property

Location: City of Rosemount & Empire Township, Dakota County, Minnesota

UTM Zone 15/NAD83/NAVD88
 491,399.47 mE +/- 0.02 m 4,952,850.08 mN +/- 0.02 m
 Elevation (ft.): 940.8 +/- 0.1 ft.
 Ground Water Depth (ft.): 65.0
 Ground Water Elevation (ft.): 875.8
 Site: Snow covered plowed field at natural grade.

Drilling Method: 4x6 Rotasonic Started: 2/26/08 2:55 PM
 Drilling Contractor: Traut Wells Completed: 2/26/08 5:00 PM
 Drill Rig: Versasonic Logged By: J.D. Lehr

DRILLING & SAMPLING					TEST RESULTS (%)				Geologic Interpretation	Economic Classification
Graphic Log	Depth (ft.)	Gravel Per Drill Action	Sample Runs	Sampled Intervals	Total + #4 Sieve	+ 1.5 Inch	1.5 Inch to 3/4 Inch	3/4 Inch to #4 Sieve		

TOPSOIL. Silty, black.	5.0	935.8								Loess
7.0 SILT. Brown.	7.0	933.8								
SAND. Fine to medium sand, slightly dirty. Very minor gravel to 1 inch. One 3 inch rock at top of interval.	14.0	926.8								Superior lobe outwash
SAND. Fine to coarse sand. Very minor gravel to 2-1/2 inches.	20.0	920.8								
SAND. Fine to coarse sand, slightly dirty. Very minor gravel to 1-3/4 inches. Poor recovery 20 to 40 feet - only 6.5 feet.	40.0	900.8								
SAND. Fine to coarse sand. Very minor gravel to 1 inch.	64.0	876.8								
SAND. Very fine to fine sand. No gravel. One-inch-thick lens of gravel to 1 inch at 91 feet.										

Continued Next Page

LOG A GNIN08 UMORE PARK DRILLING LOGS.GPJ LOG A GNIN08.GDT Printed 5/30/08

DRILLING LOG

HOLE NO. F2850

Page 2 of 2

Property: UMore Park Property

Location: City of Rosemount & Empire Township, Dakota County, Minnesota

UTM Zone 15/NAD83/NAVD88
 491,399.47 mE +/- 0.02 m 4,952,850.08 mN +/- 0.02 m
 Elevation (ft.): 940.8 +/- 0.1 ft.
 Ground Water Depth (ft.): 65.0
 Ground Water Elevation (ft.): 875.8
 Site: Snow covered plowed field at natural grade.

Drilling Method: 4x6 Rotasonic Started: 2/26/08 2:55 PM
 Drilling Contractor: Traut Wells Completed: 2/26/08 5:00 PM
 Drill Rig: Versasonic Logged By: J.D. Lehr

DRILLING & SAMPLING					TEST RESULTS (%)					Geologic Interpretation	Economic Classification
Graphic Log	Depth (ft.)	Gravel Per Drill Action	Sample Runs	Sampled Intervals	Total + #4 Sieve	+ 1.5 Inch	1.5 Inch to 3/4 Inch	3/4 Inch to #4 Sieve	Sample Wt. (lbs)		

<p>SAND. Very fine to fine sand. No gravel. One-inch-thick lens of gravel to 1 inch at 91 feet. <i>(continued)</i></p>	80										Lacustrine sediment
<p>91.0 849.8</p> <p>SILT. Gray.</p>	85										
<p>100.0 840.8</p>	90										
<p>No samples taken. Estimated less than 10 percent gravel from 7 to 64 feet. Ground water level approximate.</p>	95										
<p>T.D. 100 ft.</p>	100										

LOG A GNNN08 UMORE PARK DRILLING LOGS.GPJ LOG A GNNN08.GDT Printed 5/30/08

DRILLING LOG

HOLE NO. F2950

Page 1 of 1

Property: UMore Park Property

Location: City of Rosemount & Empire Township, Dakota County, Minnesota

UTM Zone 15/NAD83/NAVD88

491,400.30 mE +/- 0.02 m 4,952,950.25 mN +/- 0.02 m

Elevation (ft.): 952.3 +/- 0.1 ft.

Ground Water Depth (ft.): Ground water not encountered

Ground Water Elevation (ft.):

Site: Snow covered corn stubble field at natural grade.

Drilling Method: 9-inch flight auger

Started: 2/27/08 7:25 AM

Drilling Contractor: Braun Intertec

Completed: 2/27/08 8:40 AM

Drill Rig: CME-750

Logged By: J.D. Lehr

DRILLING & SAMPLING

TEST RESULTS (%)

Geologic Interpretation
Economic Classification

Graphic Log	Depth (ft.)	Gravel Per Drill Action	Sample Runs	Sampled Intervals	Total + #4 Sieve	+ 1.5 Inch	1.5 Inch to 3/4 Inch	3/4 Inch to #4 Sieve	Sample Wt. (lbs)	Geologic Interpretation	Economic Classification
1.0 TOPSOIL. Silty, dark brown.	951.3									Loess	
5.0 SAND. Fine to coarse sand. Very minor gravel to 1/2 inch.	947.3									Superior lobe outwash	14.9% + #4
SAND. Fine to medium sand. Very minor gravel to 1-1/2 inches.					13.4	1.8	4.6	7.1	26.6		
15.0 SAND. Fine to coarse sand. Minor gravel to 1-1/2 inches.	937.3				14.8	4.3	3.2	7.4	24.6		
20.0 SAND. Fine to coarse sand. Minor gravel to 1-1/2 inches.	932.3				19.2	2.4	7.2	9.6	29.6		
25.0 SAND. Fine to coarse sand. Minor gravel to 3-1/2 inches.	927.3				21.3	4.2	7.1	9.9	36.0		
SAND. Fine to medium sand. Very minor gravel to 1 inch.					9.5	0.0	2.1	7.5	29.2		
35.0 SAND. Fine to coarse sand. Minor gravel to 2 inches.	917.3				17.7	3.1	3.4	11.1	34.7		
40.0 SAND. Fine to coarse sand. Very minor trace gravel to 3/4 inch.	912.3										
45.0 SAND. Fine to coarse sand. Very minor gravel to 2 inches.	907.3										
50.0 SAND. Fine to coarse sand. Minor gravel to 1-1/2 inches, mostly pea gravel.	902.3										
55.0 SAND. Fine to coarse sand. Very minor gravel to 1-1/2 inches.	897.3										
65.0 T.D. 65 ft.	887.3										

LOG A GNIN08 UMORE PARK DRILLING LOGS.GPJ LOG A GNIN08.GDT Printed 5/30/08

DRILLING LOG

HOLE NO. F3150

Page 1 of 1

Property: UMore Park Property

Location: City of Rosemount & Empire Township, Dakota County, Minnesota

UTM Zone 15/NAD83/NAVD88

491,399.45 mE +/- 0.02 m 4,953,149.80 mN +/- 0.02 m

Elevation (ft.): 950.9 +/- 0.1 ft.

Ground Water Depth (ft.): Ground water not encountered

Ground Water Elevation (ft.):

Site: Snow covered corn stubble field at natural grade.

Drilling Method: 9-inch flight auger

Started: 2/26/08 3:40 PM

Drilling Contractor: Braun Intertec

Completed: 2/26/08 5:00 PM

Drill Rig: CME-750

Logged By: J.D. Lehr

Depth (ft.)	Graphic Log	Gravel Per Drill Action	Sample Runs	Sampled Intervals	TEST RESULTS (%)					Geologic Interpretation	Economic Classification
					Total + #4 Sieve	+ 1.5 Inch	1.5 Inch to 3/4 Inch	3/4 Inch to #4 Sieve	Sample Wt. (lbs)		
2.0	TOPSOIL. Silty, black.									Loess	
4.0	SILT. Brown.										
5.0	SAND & GRAVEL. Fine to coarse sand, slightly dirty. Gravel to 1-1/2 inches. Small sample volume.									Superior lobe outwash	18.6 % + #4
10.0		SAND. Fine to medium sand. Minor gravel to 1-1/2 inches.				21.4	2.7	8.0	10.7		
15.0	SAND. Fine to coarse sand. Very minor gravel to 1-1/4 inches.				10.0	0.0	3.2	6.8	24.8		
20.0	SAND. Fine to coarse sand. Minor gravel to 2-1/2 inches.				21.1	10.6	2.8	7.7	29.6		
25.0	SAND. Fine to coarse sand. Minor gravel to 1-3/4 inches.				21.6	3.4	7.4	10.9	30.8		
30.0	SAND. Fine to medium sand. Minor gravel to 4 inches.				21.2	9.2	4.7	7.3	31.7		
35.0	SAND. Fine to coarse sand. Very minor gravel to 1-1/2 inches.				13.7	1.3	5.7	6.7	25.5		
40.0	SAND. Fine to medium sand. Minor gravel to 2 inches.				21.1	5.4	9.0	6.7	28.9		
45.0	SAND. Very fine to fine sand. No gravel.										
60.0	SAND. Fine to coarse sand. Minor gravel to 1-1/2 inches. Till on bit - clayey, yellowish brown.										
65.0		T.D. 65 ft.									

LOG A GNNIN08 UMORE PARK DRILLING LOGS.GPJ LOG A GNNIN08.GDT Printed 5/30/08

DRILLING LOG

HOLE NO. F3350

Page 1 of 2

Property: UMore Park Property

Location: City of Rosemount & Empire Township, Dakota County, Minnesota

UTM Zone 15/NAD83/NAVD88
 491,397.66 mE +/- 0.02 m 4,953,347.02 mN +/- 0.02 m
 Elevation (ft.): 948.9 +/- 0.1 ft.
 Ground Water Depth (ft.): 65.0
 Ground Water Elevation (ft.): 883.9
 Site: Snow covered corn stubble field at natural grade.

Drilling Method: 4x6 Rotasonic Started: 2/14/08 4:20 PM
 Drilling Contractor: Traut Wells Completed: 2/14/08 5:15 PM
 Drill Rig: Versasonic Logged By: J.D. Lehr

		DRILLING & SAMPLING					TEST RESULTS (%)					Geologic Interpretation	Economic Classification
Graphic Log	Depth (ft.)	Gravel Per Drill Action	Sample Runs	Sampled Intervals	Total + #4 Sieve	+ 1.5 Inch	1.5 Inch to 3/4 Inch	3/4 Inch to #4 Sieve	Sample Wt. (lbs)				
1.0 TOPSOIL. Silty, black.	947.9										Loess		
3.0 SILT. Brown.	945.9												
5.0 SAND & GRAVEL. Fine to very coarse sand, slightly dirty. Gravel to 3/4 inch.	943.9										Superior lobe outwash	17.8% + #4	
SAND. Fine to coarse sand. Very minor gravel to 1 inch.					14.9	0.0	1.0	13.8	42.5				
					7.9	0.0	1.7	6.2	38.5				
20.0	928.9												
SAND. Fine to coarse sand, slightly dirty. No gravel.	923.9				10.3	0.0	1.8	8.5	42.1				
SAND. Fine to coarse sand. Minor gravel to 1-1/2 inches.	918.9												
SAND. Fine sand. No gravel.	913.9				10.8	0.0	3.1	7.6	39.0				
SAND & GRAVEL. Fine to medium sand, slightly dirty. Gravel to 1-1/2 inches.	908.9												
GRAVEL & SAND. Coarse to very coarse sand. Gravel to 3 inches.	901.9				47.4	11.5	13.6	22.3	55.9				
SAND & GRAVEL. Fine to very coarse sand. Gravel to 1-1/2 inches.	893.9												
SAND. Very fine to fine sand, slightly dirty. Very minor gravel to 1-1/2 inches.	888.9				16.4	0.6	4.2	11.6	54.2				
SAND. Fine to very coarse sand. Minor gravel to 1 inch.	882.9				15.4	0.0	1.3	14.1	23.2				
SAND. Fine to medium sand. No gravel.	873.9												

Continued Next Page

LOG A GNNIN08 UMORE PARK DRILLING LOGS.GPJ LOG A GNNIN08.GDT Printed 5/30/08

DRILLING LOG

HOLE NO. F3350

Page 2 of 2

Property: UMore Park Property

Location: City of Rosemount & Empire Township, Dakota County, Minnesota

UTM Zone 15/NAD83/NAVD88
 491,397.66 mE +/- 0.02 m 4,953,347.02 mN +/- 0.02 m
 Elevation (ft.): 948.9 +/- 0.1 ft.
 Ground Water Depth (ft.): 65.0
 Ground Water Elevation (ft.): 883.9
 Site: Snow covered corn stubble field at natural grade.

Drilling Method: 4x6 Rotasonic Started: 2/14/08 4:20 PM
 Drilling Contractor: Traut Wells Completed: 2/14/08 5:15 PM
 Drill Rig: Versasonic Logged By: J.D. Lehr

DRILLING & SAMPLING					TEST RESULTS (%)					Geologic Interpretation	Economic Classification
Graphic Log	Depth (ft.)	Gravel Per Drill Action	Sample Runs	Sampled Intervals	Total + #4 Sieve	+ 1.5 Inch	1.5 Inch to 3/4 Inch	3/4 Inch to #4 Sieve	Sample Wt. (lbs)		

<p>SAND. Very fine sand, very dirty. Minor gravel to 2-1/2 inches.</p> <p>80.0 868.9</p>	80										Older outwash	
<p>SANDSTONE. Very fine sand, yellowish brown to white.</p> <p>90.0 858.9</p>	85										St. Peter Sandstone	
<p>Ground water level approximate.</p> <p>T.D. 90 ft.</p>	90											

LOG A GNIN08 UMORE PARK DRILLING LOGS.GPJ LOG A GNIN08.GDT Printed 5/30/08

DRILLING LOG

HOLE NO. F3550

Page 1 of 2

Property: UMore Park Property

Location: City of Rosemount & Empire Township, Dakota County, Minnesota

UTM Zone 15/NAD83/NAVD88
 491,399.88 mE +/- 0.02 m 4,953,548.79 mN +/- 0.02 m
 Elevation (ft.): 957.2 +/- 0.1 ft.
 Ground Water Depth (ft.): 85.0
 Ground Water Elevation (ft.): 872.2
 Site: Snow covered corn stubble field at natural grade.

Drilling Method: 4x6 Rotasonic Started: 2/12/08 8:20 AM
 Drilling Contractor: Traut Wells Completed: 2/12/08 9:30 AM
 Drill Rig: Versasonic Logged By: J.D. Lehr

Depth (ft.)	Graphic Log	Gravel Per Drill Action	Sample Runs	Sampled Intervals	TEST RESULTS (%)					Geologic Interpretation	Economic Classification
					Total + #4 Sieve	+ 1.5 Inch	1.5 Inch to 3/4 Inch	3/4 Inch to #4 Sieve	Sample Wt. (lbs)		
2.0	TOPSOIL. Silty, black.									Loess	
3.0	SILT. Brown.										
4.0	SAND & GRAVEL. Fine to coarse sand, dirty. Gravel to 1 inch.				19.7	3.3	5.5	10.8	49.7	Superior lobe outwash	13.6 % + #4
10.0	SAND. Fine to coarse sand, slightly dirty. Minor gravel to 2 inches.				21.7	2.2	5.1	14.5	36.8		
15.0	SAND. Fine to very coarse sand. Minor gravel to 1-3/4 inches.				14.3	2.1	4.4	7.8	30.8		
20.0	SAND. Fine to coarse sand. Very minor gravel to 2 inches.				16.5	0.5	4.1	11.9	46.4		
30.0	SAND. Fine to coarse sand. Minor gravel to 1-1/2 inches.				9.6	0.8	2.0	6.8	47.8		
40.0	SAND. Fine to coarse sand. Very minor trace gravel to 1/2 inch.				4.1	0.0	0.0	4.1	19.6		
50.0	SAND. Fine to coarse sand. Very minor gravel to 1-1/2 inches.				2.0	0.0	0.0	2.0	24.9		
55.0	SAND. Fine to coarse sand, slightly dirty. Minor gravel to 2-1/2 inches.				7.9	0.6	0.8	6.5	28.3		
60.0	SAND. Fine to very coarse sand. Very minor gravel to 1 inch.				22.8	2.0	4.2	16.6	34.2		
70.0	SAND. Fine to coarse sand. Very minor gravel to 1 inch.				8.7	0.0	0.8	7.9	39.5		

Continued Next Page

LOG A GNNIN08 UMORE PARK DRILLING LOGS.GPJ LOG A GNNIN08.GDT Printed 5/30/08

DRILLING LOG

HOLE NO. F3550

Page 2 of 2

Property: UMore Park Property

Location: City of Rosemount & Empire Township, Dakota County, Minnesota

UTM Zone 15/NAD83/NAVD88
 491,399.88 mE +/- 0.02 m 4,953,548.79 mN +/- 0.02 m
 Elevation (ft.): 957.2 +/- 0.1 ft.
 Ground Water Depth (ft.): 85.0
 Ground Water Elevation (ft.): 872.2
 Site: Snow covered corn stubble field at natural grade.

Drilling Method: 4x6 Rotasonic Started: 2/12/08 8:20 AM
 Drilling Contractor: Traut Wells Completed: 2/12/08 9:30 AM
 Drill Rig: Versasonic Logged By: J.D. Lehr

DRILLING & SAMPLING					TEST RESULTS (%)					Geologic Interpretation	Economic Classification
Graphic Log	Depth (ft.)	Gravel Per Drill Action	Sample Runs	Sampled Intervals	Total + #4 Sieve	+ 1.5 Inch	1.5 Inch to 3/4 Inch	3/4 Inch to #4 Sieve	Sample Wt. (lbs)		

80.0	877.2			▲	12.2	0.0	2.4	9.8	41.0	St. Peter Sandstone
85.0	872.2			▲	24.2	0.0	4.0	20.2	56.5	
92.0	865.2			▲	20.5	2.7	4.2	13.6	35.3	
96.0	861.2			▲	13.7	0.0	2.5	11.2	33.5	
100.0	857.2									

SAND. Fine to coarse sand. Very minor gravel to 1 inch. (continued)
SAND. Medium to very coarse sand. Minor gravel to 1-1/4 inches.
SAND. Fine to very coarse sand. Minor gravel to 2-1/2 inches.
SAND. Fine to medium sand. No gravel.
SANDSTONE. Very fine sand, yellowish brown.

Ground water level approximate.

T.D.
100 ft.

LOG A GNIN08 UMORE PARK DRILLING LOGS.GPJ LOG A GNIN08.GDT Printed 5/30/08

DRILLING LOG

HOLE NO. F3750

Page 1 of 2

Property: UMore Park Property

Location: City of Rosemount & Empire Township, Dakota County, Minnesota

UTM Zone 15/NAD83/NAVD88
 491,401.19 mE +/- 0.02 m 4,953,751.13 mN +/- 0.02 m
 Elevation (ft.): 958.2 +/- 0.1 ft.
 Ground Water Depth (ft.): 85.0
 Ground Water Elevation (ft.): 873.2
 Site: Snow covered field at natural grade.

Drilling Method: 4x6 Rotasonic Started: 2/12/08 12:50 PM
 Drilling Contractor: Traut Wells Completed: 2/12/08 2:10 PM
 Drill Rig: Versasonic Logged By: J.D. Lehr

		DRILLING & SAMPLING					TEST RESULTS (%)					Geologic Interpretation	Economic Classification
Graphic Log	Depth (ft.)	Gravel Per Drill Action	Sample Runs	Sampled Intervals	Total + #4 Sieve	+ 1.5 Inch	1.5 Inch to 3/4 Inch	3/4 Inch to #4 Sieve	Sample Wt. (lbs)				
1.5	TOPSOIL. Silty, black.	956.7									Loess		
4.5	SILT. Brown.	953.7											
10.0	SAND. Fine to coarse sand. Very minor gravel to 1 inch.	948.2			13.0	0.0	2.0	11.0	37.3	Superior lobe outwash	24.2 % + #4		
15.0	SAND. Fine sand. Very minor trace gravel to 1-3/4 inches.	943.2			4.5	0.7	0.3	3.5	32.2				
20.0	SAND. Fine to coarse sand. Minor gravel to 2-1/2 inches.	938.2			22.8	5.0	3.3	14.4	32.6				
25.0	SAND. Fine to coarse sand. Minor gravel to 1 inch.	933.2			27.0	0.0	4.2	22.8	20.6				
30.0	SAND & GRAVEL. Fine to very coarse sand. Gravel to 1-3/4 inches.	928.2			27.9	6.5	4.2	17.1	25.5				
35.0	SAND. Fine to medium sand. Very minor gravel to 1-1/4 inches.	923.2			7.1	0.0	2.0	5.1	19.6				
40.0	GRAVEL & SAND. Fine to coarse sand, slightly dirty. Gravel to 2 inches.	918.2			42.3	6.7	11.3	24.2	28.4				
45.0	GRAVEL & SAND. Fine to very coarse sand. Gravel to 4 inches.	913.2			61.4	16.6	13.5	31.4	27.9				
50.0	SAND & GRAVEL. Fine to very coarse sand. Gravel to 1-3/4 inches.	908.2			37.9	3.4	8.3	26.2	35.0				
55.0	SAND. Fine to coarse sand. Very minor gravel to 1-1/2 inches.	903.2			14.1	0.8	2.7	10.6	22.5				
60.0	SAND. Fine to coarse sand. Minor gravel to 1-1/2 inches.	898.2			17.8	0.5	2.7	14.6	29.4				
70.0	SAND. Fine to very coarse sand, slightly dirty. Minor gravel to 1-1/2 inches.	888.2			24.8	0.0	4.8	20.0	26.9				
	SAND. Fine to coarse sand, slightly dirty. Minor gravel to 1-1/2 inches.												

Continued Next Page

LOG A GNNIN08 UMORE PARK DRILLING LOGS.GPJ LOG A GNNIN08.GDT Printed 5/30/08

DRILLING LOG

HOLE NO. F3750

Page 2 of 2

Property: UMore Park Property

Location: City of Rosemount & Empire Township, Dakota County, Minnesota

UTM Zone 15/NAD83/NAVD88
 491,401.19 mE +/- 0.02 m 4,953,751.13 mN +/- 0.02 m
 Elevation (ft.): 958.2 +/- 0.1 ft.
 Ground Water Depth (ft.): 85.0
 Ground Water Elevation (ft.): 873.2
 Site: Snow covered field at natural grade.

Drilling Method: 4x6 Rotasonic Started: 2/12/08 12:50 PM
 Drilling Contractor: Traut Wells Completed: 2/12/08 2:10 PM
 Drill Rig: Versasonic Logged By: J.D. Lehr

DRILLING & SAMPLING					TEST RESULTS (%)					Geologic Interpretation	Economic Classification
Graphic Log	Depth (ft.)	Gravel Per Drill Action	Sample Runs	Sampled Intervals	Total + #4 Sieve	+ 1.5 Inch	1.5 Inch to 3/4 Inch	3/4 Inch to #4 Sieve	Sample Wt. (lbs)		

80.0	878.2				19.7	0.6	3.2	15.9	32.7		
SAND. Fine to coarse sand, slightly dirty. Minor gravel to 1-1/2 inches. <i>(continued)</i>											
85.0	873.2										
SAND. Fine to coarse sand. Very minor gravel to 1 inch.											
95.0	863.2										
SAND. Fine to coarse sand. Very minor gravel to 1-3/4 inches.											
100.0	858.2										
SAND. Fine to very coarse sand. Minor gravel to 2 inches.											
106.0	852.2										
SAND. Fine to very coarse sand. Very minor gravel to 1-3/4 inches.											
110.5	847.7										
SAND. Fine to medium sand, extremely dirty & iron stained. Minor gravel to 1 inch.											
											Older outwash
											Lacustrine sediment
119.5	838.7										
120.0	838.2										St. Peter Sandstone
SANDSTONE. Very fine sand, yellowish brown.											

T.D. 120 ft.

Ground water level approximate.

LOG A GNNIN08 UMORE PARK DRILLING LOGS.GPJ LOG A GNNIN08.GDT Printed 5/30/08

DRILLING LOG

HOLE NO. FF0150

Page 1 of 2

Property: UMore Park Property

Location: City of Rosemount & Empire Township, Dakota County, Minnesota

UTM Zone 15/NAD83/NAVD88
 494,034.90 mE +/- 0.02 m 4,950,149.02 mN +/- 0.02 m
 Elevation (ft.): 936.7 +/- 0.1 ft.
 Ground Water Depth (ft.): Greater than 60 feet
 Ground Water Elevation (ft.):
 Site: Edge of gravel road approximately 2.5 feet above natural grade.

Drilling Method: 4x6 Rotasonic Started: 4/22/08 1:40 PM
 Drilling Contractor: Traut Wells Completed: 4/22/08 3:25 PM
 Drill Rig: Versasonic Logged By: J.D. Lehr

Depth (ft.)	Graphic Log	DRILLING & SAMPLING					TEST RESULTS (%)				Geologic Interpretation	Economic Classification	
		Gravel Per Drill Action	Sample Runs	Sampled Intervals	Total + #4 Sieve	+ 1.5 Inch	1.5 Inch to 3/4 Inch	3/4 Inch to #4 Sieve	Sample Wt. (lbs)				
1.0	FILL. Silty, gravelly.											Fill	
3.0	TOPSOIL. Silty, black.											Loess	
5.0	SILT. Brown.												
10.0	SAND. Fine to coarse sand. Very minor gravel to 1-3/4 inches.												
15.0	SAND. Fine to medium sand. Very minor gravel to 1 inch.												
20.0	SAND. Fine to coarse sand. Minor gravel to 1-3/4 inches.												
30.0	SAND. Fine to coarse sand. Very minor gravel to 1 inch.												
35.0	SAND. Fine to coarse sand. Minor gravel to 2 inches.												
40.0	SAND. Fine sand. No gravel.												
45.0	SAND. Fine to coarse sand. Very minor gravel to 1 inch.											Superior lobe outwash	
52.0	SAND. Fine sand. No gravel.												
60.0	SAND. Fine to coarse sand. Very minor gravel to 1 inch.												
65.0	SAND. Fine to very coarse sand. Very minor gravel to 1-1/2 inches.												
70.0	SAND. Fine to coarse sand. Minor gravel to 2-1/2 inches.												
74.0	SAND. Fine to coarse sand. Minor gravel to 2-1/2 inches.												

Continued Next Page

LOG A GNNIN08 UMORE PARK DRILLING LOGS.GPJ LOG A GNNIN08.GDT Printed 5/30/08

DRILLING LOG

HOLE NO. FF0150

Page 2 of 2

Property: UMore Park Property

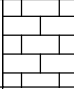
Location: City of Rosemount & Empire Township, Dakota County, Minnesota

UTM Zone 15/NAD83/NAVD88
 494,034.90 mE +/- 0.02 m 4,950,149.02 mN +/- 0.02 m
 Elevation (ft.): 936.7 +/- 0.1 ft.
 Ground Water Depth (ft.): Greater than 60 feet
 Ground Water Elevation (ft.):
 Site: Edge of gravel road approximately 2.5 feet above natural grade.

Drilling Method: 4x6 Rotasonic Started: 4/22/08 1:40 PM
 Drilling Contractor: Traut Wells Completed: 4/22/08 3:25 PM
 Drill Rig: Versasonic Logged By: J.D. Lehr

DRILLING & SAMPLING					TEST RESULTS (%)					Geologic Interpretation	Economic Classification
Graphic Log	Depth (ft.)	Gravel Per Drill Action	Sample Runs	Sampled Intervals	Total + #4 Sieve	+ 1.5 Inch	1.5 Inch to 3/4 Inch	3/4 Inch to #4 Sieve	Sample Wt. (lbs)		

WEATHERED LIMESTONE. Very hard drilling from 73 to 80 feet. *(continued)*
 80.0 856.7

	80									Prairie du Chein	
T.D. 80 ft.											

No samples taken. Estimated 10 to 15 percent gravel from 5 to 74 feet.

DRILLING LOG

HOLE NO. FF0550

Page 1 of 1

Property: UMore Park Property

Location: City of Rosemount & Empire Township, Dakota County, Minnesota

UTM Zone 15/NAD83/NAVD88
 494,000.45 mE +/- 0.02 m 4,950,550.58 mN +/- 0.02 m
 Elevation (ft.): 938.8 +/- 0.1 ft.
 Ground Water Depth (ft.): Ground water not encountered
 Ground Water Elevation (ft.):
 Site: Snow covered alfalfa field at natural grade.

Drilling Method: 9-inch flight auger Started: 3/4/08 10:45 AM
 Drilling Contractor: Braun Intertec Completed: 3/4/08 11:25 AM
 Drill Rig: CME-750 Logged By: J.D. Lehr

DRILLING & SAMPLING					TEST RESULTS (%)					Geologic Interpretation	Economic Classification
Graphic Log	Depth (ft.)	Gravel Per Drill Action	Sample Runs	Sampled Intervals	Total + #4 Sieve	+ 1.5 Inch	1.5 Inch to 3/4 Inch	3/4 Inch to #4 Sieve	Sample Wt. (lbs)		

2.5	TOPSOIL. Silty, black.	936.3									Loess	
5.0	SILT. Sandy towards bottom of interval, brown.	933.8										
	SAND. Fine to medium sand. Very minor gravel to 1-3/4 inches.										Superior lobe outwash	
15.0	SAND. Fine sand. Very minor gravel to 1-3/4 inches.	923.8										
20.0	SAND. Very fine to fine sand. Very minor trace gravel to 1/2 inch.	918.8										
23.0	SAND. Very fine to fine sand. Very minor trace gravel to 1/2 inch.	915.8									St. Peter Sandstone	
25.0	SANDSTONE. Very fine sand, white.	913.8										

T.D. 25 ft.
 No samples taken. Estimated less than 10 percent gravel from 5 to 20 feet.

LOG A GNIN08 UMORE PARK DRILLING LOGS.GPJ LOG A GNIN08.GDT Printed 5/30/08

DRILLING LOG

HOLE NO. FF0850

Page 1 of 1

Property: UMore Park Property

Location: City of Rosemount & Empire Township, Dakota County, Minnesota

UTM Zone 15/NAD83/NAVD88

494,000.89 mE +/- 0.02 m 4,950,849.70 mN +/- 0.02 m

Elevation (ft.): 938.1 +/- 0.1 ft.

Ground Water Depth (ft.): Ground water not encountered

Ground Water Elevation (ft.):

Site: Snow covered soybean stubble field at natural grade.

Drilling Method: 9-inch flight auger Started: 3/4/08 12:20 PM

Drilling Contractor: Braun Intertec Completed: 3/4/08 1:15 PM

Drill Rig: CME-750

Logged By: J.D. Lehr

		DRILLING & SAMPLING				TEST RESULTS (%)					Geologic Interpretation	Economic Classification
Graphic Log	Depth (ft.)	Gravel Per Drill Action	Sample Runs	Sampled Intervals	Total + #4 Sieve	+ 1.5 Inch	1.5 Inch to 3/4 Inch	3/4 Inch to #4 Sieve	Sample Wt. (lbs)			
2.0	TOPSOIL. Silty, black.	936.1									Loess	
3.0	SILT. Brown.	935.1										
5.0	SAND. Fine to medium sand, slightly dirty. Minor gravel to 1-1/2 inches.	933.1				22.0	4.7	6.0	11.4	38.9		
10.0	SAND. Fine to coarse sand. Minor gravel to 1-3/4 inches.	928.1										
15.0	SAND. Fine to medium sand. Very minor gravel to 1 inch.	923.1										
20.0	SAND. Fine to medium sand. Very minor gravel to 1-1/2 inches.	918.1				5.2	0.0	1.5	3.7	33.9		
25.0	SAND. Fine sand. No gravel.	913.1									Superior lobe outwash	
	SAND & GRAVEL. Fine to very coarse sand. Gravel to 1-1/2 inches.					29.8	1.2	7.9	20.7	40.7		
						30.5	2.4	6.7	21.4	30.5		
						31.1	3.2	6.3	21.6	50.1		
40.0		898.1										
42.0	SAND & GRAVEL. Fine to very coarse sand. Gravel to 3 inches.	896.1										
43.0	SANDSTONE. Very fine sand, yellowish brown.	895.1									St. Peter Sandstone	
	T.D. 43 ft.											

19.3 % + #4

LOG A GNNIN08 UMORE PARK DRILLING LOGS.GPJ LOG A GNNIN08.GDT Printed 5/30/08

DRILLING LOG

HOLE NO. FF1050

Page 1 of 1

Property: UMore Park Property

Location: City of Rosemount & Empire Township, Dakota County, Minnesota

UTM Zone 15/NAD83/NAVD88

494,000.15 mE +/- 0.02 m 4,951,049.88 mN +/- 0.02 m

Elevation (ft.): 938.4 +/- 0.1 ft.

Ground Water Depth (ft.): Ground water not encountered

Ground Water Elevation (ft.):

Site: Snow covered soybean stubble field at natural grade.

Drilling Method: 9-inch flight auger

Started: 3/4/08 2:15 PM

Drilling Contractor: Braun Intertec

Completed: 3/4/08 3:10 PM

Drill Rig: CME-750

Logged By: J.D. Lehr

DRILLING & SAMPLING

TEST RESULTS (%)

Geologic Interpretation

Economic Classification

Graphic Log	Depth (ft.)	Gravel Per Drill Action	Sample Runs	Sampled Intervals	Total + #4 Sieve	+ 1.5 Inch	1.5 Inch to 3/4 Inch	3/4 Inch to #4 Sieve	Sample Wt. (lbs)	Geologic Interpretation	Economic Classification
2.0 TOPSOIL. Silty, black.	936.4									Loess	
4.5 SILT. Sandy towards bottom of interval, brown.	933.9										
5.0 SAND. Fine to medium sand. Very minor gravel to 1 inch. Small sample volume.	933.4									Superior lobe outwash	22.1 % + #4
SAND. Fine to coarse sand. Very minor gravel to 1-1/4 inches.	923.4				8.4	0.6	3.5	4.3	31.7		
SAND. Fine to coarse sand. Minor gravel to 2-1/4 inches.	918.4				12.8	6.9	2.1	3.8	30.1		
SAND & GRAVEL. Fine to coarse sand. Gravel to 3 inches.	913.4				26.6	9.9	7.2	9.4	33.1		
SAND & GRAVEL. Fine to coarse sand. Gravel to 1-3/4 inches. Very rocky (drill action) from 30 to 35 feet.	913.4				31.2	2.5	8.2	20.5	32.7		
	37.0				38.4	1.5	8.9	28.0	42.0		
40.0 TILL. Clayey, gray.	898.4									Till	
T.D. 40 ft.											

LOG A GNIN08 UMORE PARK DRILLING LOGS.GPJ LOG A GNIN08.GDT Printed 5/30/08

DRILLING LOG

HOLE NO. FF1250

Page 1 of 1

Property: UMore Park Property

Location: City of Rosemount & Empire Township, Dakota County, Minnesota

UTM Zone 15/NAD83/NAVD88

494,000.63 mE +/- 0.02 m 4,951,250.32 mN +/- 0.02 m

Elevation (ft.): 935.4 +/- 0.1 ft.

Ground Water Depth (ft.): Ground water not encountered

Ground Water Elevation (ft.):

Site: Snow covered field at natural grade.

Drilling Method: 9-inch flight auger

Started: 3/5/08 7:40 AM

Drilling Contractor: Braun Intertec

Completed: 3/5/08 8:45 AM

Drill Rig: CME-750

Logged By: J.D. Lehr

Depth (ft.)	Graphic Log	Gravel Per Drill Action	Sample Runs	Sampled Intervals	TEST RESULTS (%)					Geologic Interpretation	Economic Classification	
					Total + #4 Sieve	+ 1.5 Inch	1.5 Inch to 3/4 Inch	3/4 Inch to #4 Sieve	Sample Wt. (lbs)			
1.0	TOPSOIL. Silty, dark brown.										Loess	
5.0	SILT. Sandy, towards bottom of interval, brown.											
10.0	SAND. Fine to medium sand. Very minor gravel to 1-1/4 inches.				5.0	0.0	2.0	3.0	27.2	Superior lobe outwash	14.9% + #4	
15.0	SAND. Fine sand. Very minor trace gravel to 3/4 inch.											
20.0	SAND. Fine sand. Very minor gravel to 1-1/2 inches.				4.2	0.0	1.3	2.9	27.2			
25.0	SAND. Fine sand. No gravel.											
38.0	SAND & GRAVEL. Fine to coarse sand. Gravel to 2 inches. Poor quality samples 30 to 38 feet - very fine sand below "walked up". Lower contact based on drill action.				30.7	4.7	7.7	18.3	41.4			
45.0	SAND. Very fine sand. No gravel.									Lacustrine sediment		
	T.D. 45 ft.											

LOG A GNIN08 UMORE PARK DRILLING LOGS.GPJ LOG A GNIN08.GDT Printed 5/30/08

DRILLING LOG

HOLE NO. FF1450

Page 1 of 1

Property: UMore Park Property

Location: City of Rosemount & Empire Township, Dakota County, Minnesota

UTM Zone 15/NAD83/NAVD88
 493,999.89 mE +/- 0.02 m 4,951,448.81 mN +/- 0.02 m
 Elevation (ft.): 937.6 +/- 0.1 ft.
 Ground Water Depth (ft.): 64.0
 Ground Water Elevation (ft.): 873.6
 Site: Snow covered field at natural grade.

Drilling Method: 9-inch flight auger Started: 3/5/08 4:10 PM
 Drilling Contractor: Braun Intertec Completed: 3/5/08 5:30 PM
 Drill Rig: CME-750 Logged By: J.D. Lehr

Depth (ft.)	Graphic Log	Gravel Per Drill Action	Sample Runs	Sampled Intervals	TEST RESULTS (%)					Geologic Interpretation	Economic Classification
					Total + #4 Sieve	+ 1.5 Inch	1.5 Inch to 3/4 Inch	3/4 Inch to #4 Sieve	Sample Wt. (lbs)		
2.0	TOPSOIL. Silty, black.									Loess	
3.0	SILT. Brown.										
5.0	SAND. Fine to medium sand. Very minor trace gravel to 1/2 inch.										
10.0	SAND. Fine sand. No gravel.				3.1	0.0	0.3	2.8	28.9		
15.0	SAND. Fine sand. Very minor trace gravel to 3/4 inch.										
20.0	SAND. Fine sand. Very minor trace gravel to 3/4 inch.				1.8	0.0	0.5	1.3	22.3		
25.0	SAND & GRAVEL. Fine to medium sand, dirty. Gravel to 2-1/4 inches.				38.0	11.0	11.2	15.9	34.0	Superior lobe outwash	14.7% + #4
30.0	SAND & GRAVEL. Fine to coarse sand, dirty. Gravel to 1-1/2 inches.				37.3	1.9	12.5	22.8	41.6		
35.0	SAND. Fine to coarse sand, slightly dirty. Minor gravel to 1-3/4 inches.				22.2	4.9	4.4	12.9	21.6		
40.0	SAND. Fine to coarse sand. Very minor gravel to 1 inch. Small sample volume. Large rocks disrupted sample.										
45.0	SAND. Fine to very coarse sand, very dirty. Minor gravel to 1-1/2 inches.										
50.0	SAND. Fine to very coarse sand, extremely dirty. Very minor gravel to 1-3/4 inches.										
55.0	SAND. Fine to very coarse sand, extremely dirty. Minor gravel to 1 inch.									Older outwash	
65.0	T.D. 65 ft.										

LOG A GNIN08 UMORE PARK DRILLING LOGS.GPJ LOG A GNIN08.GDT Printed 5/30/08

DRILLING LOG

HOLE NO. FF1650

Page 1 of 1

Property: UMore Park Property

Location: City of Rosemount & Empire Township, Dakota County, Minnesota

UTM Zone 15/NAD83/NAVD88

493,999.48 mE +/- 0.02 m 4,951,648.89 mN +/- 0.02 m

Elevation (ft.): 927.7 +/- 0.1 ft.

Ground Water Depth (ft.): Ground water not encountered

Ground Water Elevation (ft.):

Site: Snow covered field at natural grade.

Drilling Method: 9-inch flight auger

Started: 3/6/08 9:55 AM

Drilling Contractor: Braun Intertec

Completed: 3/6/08 10:50 AM

Drill Rig: CME-750

Logged By: J.D. Lehr

DRILLING & SAMPLING

TEST RESULTS (%)

Geologic Interpretation

Economic Classification

Graphic Log	Depth (ft.)	Gravel Per Drill Action	Sample Runs	Sampled Intervals	Total + #4 Sieve	+ 1.5 Inch	1.5 Inch to 3/4 Inch	3/4 Inch to #4 Sieve	Sample Wt. (lbs)
-------------	-------------	-------------------------	-------------	-------------------	------------------	------------	----------------------	----------------------	------------------

3.0	TOPSOIL. Silty, black.	924.7							
7.5	SILT. Brown. Lower contact based on drill action.	920.2							
10.0	SAND. Fine to medium sand. Very minor gravel to 2 inches.	917.7							
	SAND. Fine to medium sand. Very minor gravel to 1 inch.								
20.0		907.7							
	SILT. Brown.								
24.0		903.7							
	SAND. Fine sand, dirty. Very minor gravel to 1-3/4 inches.								
30.0		897.7							
	SAND. Fine to medium sand, slightly dirty. Very minor gravel to 1-1/2 inches.								
40.0		887.7							
	SAND. Fine to medium sand. Very minor gravel to 1 inch.								
45.0		882.7							

T.D.
45 ft.

No samples taken. Estimated less than 10 percent gravel from 7.5 to 45 feet in addition to silt layer from 20 to 24 feet.

Loess

Superior lobe outwash

LOG A GNIN08 UMORE PARK DRILLING LOGS.GPJ LOG A GNIN08.GDT Printed 5/30/08

DRILLING LOG

HOLE NO. FF2450

Page 1 of 1

Property: UMore Park Property

Location: City of Rosemount & Empire Township, Dakota County, Minnesota

UTM Zone 15/NAD83/NAVD88

493,997.71 mE +/- 0.02 m 4,952,451.66 mN +/- 0.02 m

Elevation (ft.): 937.5 +/- 0.1 ft.

Ground Water Depth (ft.): Ground water not encountered

Ground Water Elevation (ft.):

Site: Snow covered soybean stubble field at natural grade.

Drilling Method: 4x6 Rotasonic

Started: 2/28/08 10:30 AM

Drilling Contractor: Traut Wells

Completed: 2/28/08 1:25 PM

Drill Rig: Versasonic

Logged By: J.D. Lehr

DRILLING & SAMPLING

TEST RESULTS (%)

Geologic Interpretation

Economic Classification

Graphic Log	Depth (ft.)	Gravel Per Drill Action	Sample Runs	Sampled Intervals	Total + #4 Sieve	+ 1.5 Inch	1.5 Inch to 3/4 Inch	3/4 Inch to #4 Sieve	Sample Wt. (lbs)	Geologic Interpretation	Economic Classification
FILL. Silty, sandy, gravelly.	5									Fill	
SAND. Fine to medium sand. Very minor trace gravel to 3/4 inch.	9.0 - 20.0				1.3	0.0	0.1	1.2	38.8	Superior lobe outwash	16.7 % + #4
SAND. Fine to very coarse sand. Very minor gravel to 1-1/2 inches. Poor recovery from 20 to 40 feet - only 7.5 feet.	20.0 - 30.0				12.8	0.0	4.0	8.8	26.1		
SAND. Fine to coarse sand. Minor gravel to 1-3/4 inches.	30.0 - 40.0				24.9	2.0	8.9	14.0	33.4		
SAND. Fine to very coarse sand. Minor gravel to 1-3/4 inches.	40.0 - 45.0				19.3	0.0	3.7	15.6	37.0		
SAND. Fine to coarse sand. Minor gravel to 2 inches.	45.0 - 50.0				19.5	2.9	3.2	13.4	33.7		
SAND & GRAVEL. Fine to coarse sand. Gravel to 3-1/2 inches.	50.0 - 55.0				26.1	7.6	7.7	10.9	32.6		
SAND. Fine to coarse sand. Very minor gravel to 1-1/2 inches.	55.0 - 60.0				11.7	0.5	1.3	9.8	39.0		
SAND & GRAVEL. Medium to very coarse sand, slightly dirty. Gravel to 4 inches.	60.0 - 64.0				35.7	9.5	4.1	22.1	47.2		
TILL. Clayey, yellowish brown, hard.	64.0 - 70.0									Till	
T.D. 70 ft.	70.0										

LOG-A-GNINN08-UMORE PARK DRILLING LOGS.GPJ LOG-A-GNINN08.GDT Printed 5/30/08

DRILLING LOG

HOLE NO. FF2750

Property: UMore Park Property

Location: City of Rosemount & Empire Township, Dakota County, Minnesota

UTM Zone 15/NAD83/NAVD88
 493,994.59 mE +/- 0.02 m 4,952,747.24 mN +/- 0.02 m
 Elevation (ft.): 937.5 +/- 0.1 ft.
 Ground Water Depth (ft.): 78.0
 Ground Water Elevation (ft.): 859.5
 Site: Snow covered soybean stubble field at natural grade.

Drilling Method: 4x6 Rotasonic Started: 2/28/08 10:45 AM
 Drilling Contractor: Traut Wells Completed: 2/28/08 1:05 PM
 Drill Rig: Versasonic Logged By: J.D. Lehr

DRILLING & SAMPLING					TEST RESULTS (%)				Geologic Interpretation	Economic Classification
Graphic Log	Depth (ft.)	Gravel Per Drill Action	Sample Runs	Sampled Intervals	Total + #4 Sieve	+ 1.5 Inch	1.5 Inch to 3/4 Inch	3/4 Inch to #4 Sieve		

1.5	TOPSOIL. Silty, black.	936.0								Loess	
3.0	SILT. Brown.	934.5									
4.0	SAND & GRAVEL. Fine to coarse sand, dirty. Gravel to 1-3/4 inches.	933.5								Superior lobe outwash	
10.0	SAND. Fine to medium sand. Very minor gravel to 1 inch.	927.5									
15.0	SAND. Fine to medium sand, slightly dirty. Very minor gravel to 1-1/2 inches.	922.5									
20.0	SAND. Fine to medium sand. Very minor gravel to 1 inch.	917.5									
25.0	SAND. Fine to medium sand, slightly dirty. Very minor gravel to 1-3/4 inches.	912.5									
30.0	SAND. Fine to medium sand. No gravel.	907.5									
35.0	SAND. Fine to coarse sand. Very minor gravel to 1 inch.	902.5									
40.0	SAND. Fine to coarse sand. Minor gravel to 3 inches.	897.5									
45.0	SAND. Fine to coarse sand. Very minor gravel to 1 inch.	892.5									
55.0	SAND. Fine to medium sand. Very minor gravel to 1 inch.	882.5									
60.0	SAND. Fine to medium sand. Very minor gravel to 2 inches.	877.5									
65.0	SAND & GRAVEL. Fine to very coarse sand, dirty. Gravel to 1-1/4 inches.	872.5									
	SAND. Fine to very coarse sand. Minor gravel to 1 inch.										

Continued Next Page

LOG A GNNIN08 UMORE PARK DRILLING LOGS.GPJ LOG A GNNIN08.GDT Printed 5/30/08

DRILLING LOG

HOLE NO. FF2750

Page 2 of 2

Property: UMore Park Property

Location: City of Rosemount & Empire Township, Dakota County, Minnesota

UTM Zone 15/NAD83/NAVD88
 493,994.59 mE +/- 0.02 m 4,952,747.24 mN +/- 0.02 m
 Elevation (ft.): 937.5 +/- 0.1 ft.
 Ground Water Depth (ft.): 78.0
 Ground Water Elevation (ft.): 859.5
 Site: Snow covered soybean stubble field at natural grade.

Drilling Method: 4x6 Rotasonic Started: 2/28/08 10:45 AM
 Drilling Contractor: Traut Wells Completed: 2/28/08 1:05 PM
 Drill Rig: Versasonic Logged By: J.D. Lehr

DRILLING & SAMPLING					TEST RESULTS (%)					Geologic Interpretation	Economic Classification
Graphic Log	Depth (ft.)	Gravel Per Drill Action	Sample Runs	Sampled Intervals	Total + #4 Sieve	+ 1.5 Inch	1.5 Inch to 3/4 Inch	3/4 Inch to #4 Sieve	Sample Wt. (lbs)		

SAND. Fine to very coarse sand. Minor gravel to 1 inch. (continued) ▼
 80.0 857.5

82.0 **SAND.** Fine to coarse sand. No gravel. 855.5

SILT. Sandy in places, brown & reddish brown.
 100.0 837.5



T.D.
100 ft.

No samples taken. Estimated less than 10 percent gravel 3 to 82 feet. Ground water level approximate.

Lacustrine sediment

LOG A GNIN08 UMORE PARK DRILLING LOGS.GPJ LOG A GNIN08.GDT Printed 5/30/08

DRILLING LOG

HOLE NO. G0100

Page 1 of 1

Property: UMore Park Property

Location: City of Rosemount & Empire Township, Dakota County County, Minnesota

UTM Zone 15/NAD83/NAVD88

491,500.71 mE +/- 0.02 m 4,950,112.87 mN +/- 0.02 m

Elevation (ft.): 948.6 +/- 0.1 ft.

Ground Water Depth (ft.): Ground water not encountered

Ground Water Elevation (ft.):

Site: Edge of field road at natural grade.

Drilling Method: 9-inch flight auger

Started: 9/24/07 3:10 PM

Drilling Contractor: WDC

Completed: 9/24/07 4:10 PM

Drill Rig: CME-85

Logged By: J.D. Lehr

Graphic Log	Depth (ft.)	Gravel Per Drill Action	Sample Runs	Sampled Intervals	TEST RESULTS (%)					Geologic Interpretation	Economic Classification
					Total + #4 Sieve	+ 1.5 Inch	1.5 Inch to 3/4 Inch	3/4 Inch to #4 Sieve	Sample Wt. (lbs)		
2.0 TOPSOIL. Silty, black.	946.6									Loess	
3.0 SILT. Brown.	945.6										
5.0 SAND. Fine to medium sand, slightly dirty. Very minor trace gravel to 1/2 inch.	943.6										
10.0 SAND. Fine to coarse sand. Very minor gravel to 1 inch.	938.6				7.9	0.0	1.4	6.5	36.9	Superior lobe outwash	14.1 % + #4
15.0 SAND & GRAVEL. Fine to coarse sand. Gravel to 2-1/2 inches.	933.6				35.7	7.7	6.2	21.8	31.0		
20.0 SAND. Fine to medium sand. Very minor gravel to 1-1/4 inches.	928.6				9.3	0.0	3.0	6.4	26.4		
25.0 SAND. Fine sand. Very minor trace gravel to 3/4 inch.	923.6				4.7	0.0	0.8	4.0	24.6		
32.0 SAND. Fine to coarse sand. Minor gravel to 1-1/4 inches.	916.6				15.1	0.5	2.9	11.7	30.4		
39.5 TILL. Clayey, dark gray. Refusal in tight material at 39.5 feet.	909.1									Till	
T.D. 39.5 ft.											

Broke off top auger at 39.5 feet.

LOG A GNIN08 UMORE PARK DRILLING LOGS.GPJ LOG A GNIN08.GDT Printed 5/30/08

DRILLING LOG

HOLE NO. G0300

Page 1 of 1

Property: UMore Park Property

Location: City of Rosemount & Empire Township, Dakota County County, Minnesota

UTM Zone 15/NAD83/NAVD88
 491,500.56 mE +/- 0.02 m 4,950,257.51 mN +/- 0.02 m
 Elevation (ft.): 948.2 +/- 0.1 ft.
 Ground Water Depth (ft.): 45.0
 Ground Water Elevation (ft.): 903.2
 Site: Edge of field road at natural grade.

Drilling Method: 9-inch flight auger Started: 9/24/07 4:20 PM
 Drilling Contractor: WDC Completed: 9/24/07 5:20 PM
 Drill Rig: CME-85 Logged By: J.D. Lehr

Depth (ft.)	Graphic Log	Gravel Per Drill Action	Sample Runs	Sampled Intervals	TEST RESULTS (%)					Geologic Interpretation	Economic Classification	
					Total + #4 Sieve	+ 1.5 Inch	1.5 Inch to 3/4 Inch	3/4 Inch to #4 Sieve	Sample Wt. (lbs)			
2.5	TOPSOIL. Silty, black.											
7.0	SILT. Brown.									Loess		
10.0	SAND. Fine to coarse sand. Very minor gravel to 1 inch.				12.5	0.0	2.5	10.0	25.8	Superior lobe outwash	10.9 % + #4	
	SAND. Fine to coarse sand. Very minor gravel to 1-1/2 inches.				14.0	2.5	1.4	10.2	26.1			
20.0	SAND. Fine to medium sand. Very minor trace gravel to 1 inch.				6.7	0.0	1.9	4.8	26.3			
25.0	SAND. Fine to medium sand. Very minor gravel to 1 inch.				5.0	0.0	1.0	4.0	26.1			
30.0	SAND. Fine to coarse sand. Minor gravel to 1-1/4 inches.				8.3	0.0	1.7	6.6	26.7			
35.0	SAND. Fine to coarse sand. Very minor gravel to 3/4 inch.				21.8	0.0	4.2	17.6	28.0			
45.0	▼ 903.2				10.9	0.0	1.1	9.7	21.1			
47.0	TILL. Sandy, reddish brown.				8.4	0.0	2.1	6.3	17.5	Till		
	T.D. 47 ft.											

LOG A GNIN08 UMORE PARK DRILLING LOGS.GPJ LOG A GNIN08.GDT Printed 5/30/08

DRILLING LOG

HOLE NO. G0400

Page 1 of 1

Property: UMore Park Property

Location: City of Rosemount & Empire Township, Dakota County, Minnesota

UTM Zone 15/NAD83/NAVD88

491,500.95 mE +/- 0.02 m 4,950,404.26 mN +/- 0.02 m

Elevation (ft.): 947.5 +/- 0.1 ft.

Ground Water Depth (ft.): Ground water not encountered

Ground Water Elevation (ft.):

Site: Grassy field road at natural grade.

Drilling Method: 9-inch flight auger

Started: 4/21/08 8:25 AM

Drilling Contractor: Braun Intertec

Completed: 4/21/08 9:20 AM

Drill Rig: CME-750

Logged By: J.D. Lehr

		DRILLING & SAMPLING					TEST RESULTS (%)				Geologic Interpretation	Economic Classification	
Graphic Log	Depth (ft.)	Gravel Per Drill Action	Sample Runs	Sampled Intervals	Total + #4 Sieve	+ 1.5 Inch	1.5 Inch to 3/4 Inch	3/4 Inch to #4 Sieve	Sample Wt. (lbs)				
1.5	TOPSOIL. Silty, black.	946.0									Loess		
3.0	SILT. Brown. Gradational with below.	944.5											
5.0	SAND. Fine to medium sand, very dirty. Very minor trace gravel to 3/4 inch.	942.5									Superior lobe outwash	26.4 % + #4	
10.0	SAND. Fine to medium sand. Very minor gravel to 1-3/4 inches.	937.5			12.6	1.6	4.6	6.4	38.3				
15.0	SAND & GRAVEL. Fine to coarse sand. Gravel to 2-1/4 inches.	932.5			25.4	10.9	5.3	9.1	33.8				
20.0	SAND & GRAVEL. Fine to very coarse sand. Gravel to 3 inches.	927.5			31.9	12.8	4.7	14.3	40.9				
25.0	SAND & GRAVEL. Medium to very coarse sand. Gravel to 2 inches.	922.5			33.4	7.9	6.7	18.8	37.4				
30.0	SAND & GRAVEL. Fine to medium sand. Gravel to 3 inches.	917.5			34.2	20.4	6.2	7.6	42.1				
35.0	SAND. Fine to medium sand. Minor gravel to 2-1/2 inches.	912.5			18.0	6.8	3.5	7.6	26.0				
40.0	SAND & GRAVEL. Fine to medium sand. Gravel to 3-1/2 inches. Very rocky (drill action) from 38 to 40 feet.	907.5			29.6	15.7	4.2	9.7	24.4				
41.0	TILL. Clayey, gray.	906.5								Till			
	T.D. 41 ft.												

LOG A GNIN08 UMORE PARK DRILLING LOGS.GPJ LOG A GNIN08.GDT Printed 5/30/08

DRILLING LOG

HOLE NO. G0500

Page 1 of 1

Property: UMore Park Property

Location: City of Rosemount & Empire Township, Dakota County, Minnesota

UTM Zone 15/NAD83/NAVD88
 491,498.28 mE +/- 0.02 m 4,950,550.21 mN +/- 0.02 m
 Elevation (ft.): 946.3 +/- 0.1 ft.
 Ground Water Depth (ft.): 62.0
 Ground Water Elevation (ft.): 884.3
 Site: Edge of field road at natural grade.

Drilling Method: 9-inch flight auger Started: 9/25/07 7:20 AM
 Drilling Contractor: WDC Completed: 9/25/07 9:10 AM
 Drill Rig: CME-85 Logged By: J.D. Lehr

Depth (ft.)	Graphic Log	Gravel Per Drill Action	Sample Runs	Sampled Intervals	TEST RESULTS (%)					Geologic Interpretation	Economic Classification	
					Total + #4 Sieve	+ 1.5 Inch	1.5 Inch to 3/4 Inch	3/4 Inch to #4 Sieve	Sample Wt. (lbs)			
2.0	TOPSOIL. Silty, black.											
4.0	SILT. Brown.									Loess		
5.0	SAND & GRAVEL. Fine to coarse sand, dirty. Gravel to 1-1/2 inches.				21.6	1.9	6.9	12.7	32.5	Superior lobe outwash	22.9% + #4	
10.0	SAND. Fine to coarse sand. Minor gravel to 1-3/4 inches.				29.7	8.2	3.3	18.2	19.3			
15.0	SAND & GRAVEL. Fine to coarse sand. Gravel to 3-1/2 inches.				8.6	1.3	1.1	6.3	24.7			
20.0	SAND. Fine to medium sand. Very minor gravel to 1-3/4 inches.				16.0	4.7	4.1	7.2	25.2			
25.0	SAND. Fine to medium sand. Minor gravel to 3 inches.				17.8	6.0	3.2	8.5	22.4			
30.0	SAND & GRAVEL. Fine to coarse sand, slightly dirty. Gravel to 1-1/2 inches.				35.5	2.9	9.5	23.0	27.9			
40.0	SAND. Fine to medium sand. Very minor trace gravel to 3/4 inch.				31.6	0.0	8.6	23.0	24.0			
65.0	T.D. 65 ft.											

LOG A GNNIN08 UMORE PARK DRILLING LOGS.GPJ LOG A GNNIN08.GDT Printed 5/30/08

DRILLING LOG

HOLE NO. G0700

Page 1 of 1

Property: UMore Park Property

Location: City of Rosemount & Empire Township, Dakota County, Minnesota

UTM Zone 15/NAD83/NAVD88

491,500.01 mE +/- 0.02 m 4,950,689.84 mN +/- 0.02 m

Elevation (ft.): 945.6 +/- 0.1 ft.

Ground Water Depth (ft.): Ground water not encountered

Ground Water Elevation (ft.):

Site: Edge of field road at natural grade.

Drilling Method: 9-inch flight auger

Started: 9/25/07 9:20 AM

Drilling Contractor: WDC

Completed: 9/25/07 10:10 AM

Drill Rig: CME-85

Logged By: J.D. Lehr

		DRILLING & SAMPLING				TEST RESULTS (%)					Geologic Interpretation	Economic Classification
Graphic Log	Depth (ft.)	Gravel Per Drill Action	Sample Runs	Sampled Intervals	Total + #4 Sieve	+ 1.5 Inch	1.5 Inch to 3/4 Inch	3/4 Inch to #4 Sieve	Sample Wt. (lbs)			
1.5 TOPSOIL. Silty, black.	944.1										Loess	
3.5 SILT. Brown.	942.1											
5.0 SAND. Fine to medium sand. Very minor trace gravel to 1-1/4 inches.	940.6										Superior lobe outwash	14.0 % + #4
10.0 SAND. Fine to coarse sand. Very minor gravel to 1-1/2 inches.	935.6				12.4	1.2	3.4	7.7	34.5			
15.0 SAND. Fine to coarse sand. Minor gravel to 1-1/2 inches.	930.6				16.0	0.0	6.2	9.8	27.2			
20.0 SAND. Fine sand. Very minor trace gravel to 1 inch.	925.6										Superior lobe outwash	
25.0 SAND. Fine sand. Very minor trace gravel to 2-1/2 inches.	920.6											
30.0 SAND. Fine to medium sand. Very minor gravel to 1-1/2 inches.	915.6											
35.0 SAND. Fine to coarse sand. Very minor gravel to 2 inches.	910.6											
40.0 SAND. Fine to coarse sand. Very minor trace gravel to 1-1/4 inches.	905.6										Lacustrine sediment	
45.0 SAND. Very fine to fine sand, dirty. No gravel.	900.6											
55.0 SAND. Very fine to fine sand. No gravel.	890.6											
T.D. 55 ft.												
Estimated less than 10 percent gravel from 15 to 40 feet.												

LOG A GNNIN08 UMORE PARK DRILLING LOGS.GPJ LOG A GNNIN08.GDT Printed 5/30/08

DRILLING LOG

HOLE NO. G0900

Page 1 of 1

Property: UMore Park Property

Location: City of Rosemount & Empire Township, Dakota County, Minnesota

UTM Zone 15/NAD83/NAVD88

491,500.02 mE +/- 0.02 m 4,950,874.11 mN +/- 0.02 m

Elevation (ft.): 945.7 +/- 0.1 ft.

Ground Water Depth (ft.): 60.0

Ground Water Elevation (ft.): 885.7

Site: Edge of corn field north of field road at natural grade.

Drilling Method: 9-inch flight auger

Started: 9/26/07 1:30 PM

Drilling Contractor: WDC

Completed: 9/26/07 4:20 PM

Drill Rig: CME-85

Logged By: J.D. Lehr

DRILLING & SAMPLING

TEST RESULTS (%)

Geologic Interpretation
Economic Classification

Graphic Log	Depth (ft.)	Gravel Per Drill Action	Sample Runs	Sampled Intervals	Total + #4 Sieve	+ 1.5 Inch	1.5 Inch to 3/4 Inch	3/4 Inch to #4 Sieve	Sample Wt. (lbs)	Geologic Interpretation	Economic Classification
2.0 TOPSOIL. Silty, black.	943.7									Loess	
4.5 SILT. Brown.	941.2										
SAND. Fine to coarse sand. Minor gravel to 1-1/2 inches.	935.7				15.0	0.0	5.8	9.2	24.1	Superior lobe outwash	20.6 % + #4
SAND & GRAVEL. Fine to coarse sand. Gravel to 3-1/2 inches.	930.7				33.8	17.0	5.4	11.3	27.9		
SAND. Fine to coarse sand. Minor gravel to 1-3/4 inches.	925.7				20.5	4.3	5.7	10.5	24.0		
SAND. Fine to coarse sand. Minor gravel to 1 inch.	920.7				19.0	0.0	4.7	14.4	21.7		
SAND. Fine to coarse sand, slightly dirty. Minor gravel to 1 inch.	910.7				20.8	0.6	5.2	15.0	28.3		
SAND. Fine to coarse sand. Very minor gravel to 1 inch.	905.7				17.6	0.0	4.1	13.4	14.3		
SAND. Fine to medium sand. No gravel.	895.7									Lacustrine sediment	
SAND. Fine to coarse sand. Very minor trace gravel to 1 inch.	890.7										
SAND. Fine to medium sand. No gravel.	885.7										
SAND. Very fine to fine sand. No gravel.	880.7										
T.D. 65 ft.	65										

Small sample volume from 30 to 45 feet.

LOG A GNNIN08 UMORE PARK DRILLING LOGS.GPJ LOG A GNNIN08.GDT Printed 5/30/08

DRILLING LOG

HOLE NO. G1100

Page 1 of 1

Property: UMore Park Property

Location: City of Rosemount & Empire Township, Dakota
County County, Minnesota

UTM Zone 15/NAD83/NAVD88

491,499.61 mE +/- 0.02 m 4,951,101.25 mN +/- 0.02 m

Elevation (ft.): 944.0 +/- 0.1 ft.

Ground Water Depth (ft.): 58.0

Ground Water Elevation (ft.): 886.0

Site: Corn stubble field at natural grade.

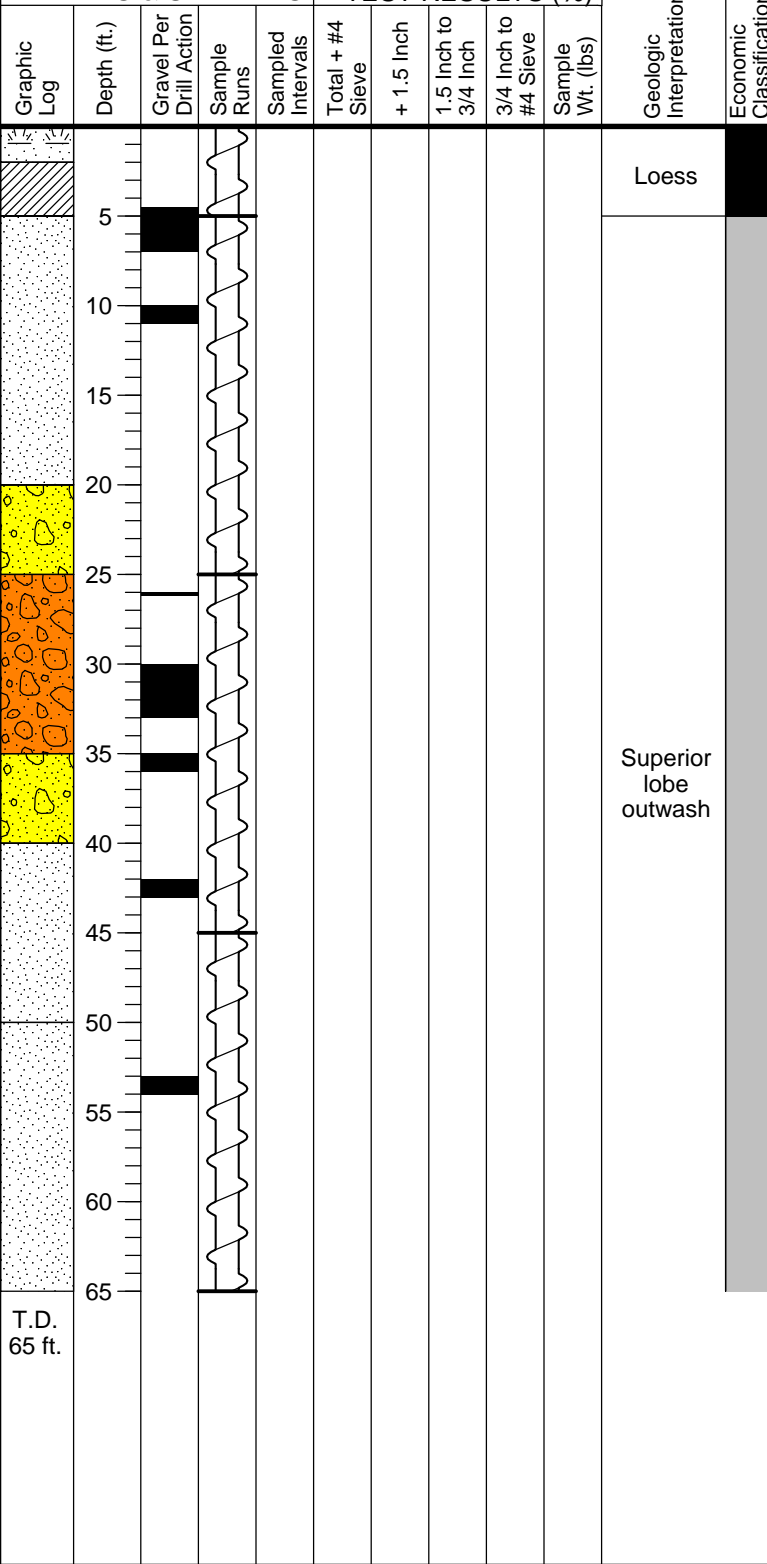
Drilling Method: 9-inch flight auger Started: 10/24/07 9:50 AM
Drilling Contractor: Braun Intertec Completed: 10/24/07 11:30 AM
Drill Rig: CME-750 Logged By: J.D. Lehr

DRILLING & SAMPLING

TEST RESULTS (%)

Geologic Interpretation
Economic Classification

2.0	TOPSOIL. Silty, black.	942.0
5.0	SILT. Brown.	939.0
20.0	SAND. Fine to medium sand. No gravel.	924.0
25.0	SAND. Fine to coarse sand. Very minor gravel to 1-1/2 inches.	919.0
35.0	SAND. Fine to coarse sand. Minor gravel to 1-1/2 inches.	909.0
40.0	SAND. Fine to medium sand. Very minor gravel to 1-1/2 inches.	904.0
50.0	SAND. Fine sand. No gravel.	894.0
65.0	T.D. 65 ft.	879.0



Interval 25 to 35 is the only interval with decent percentage gravel. Too much sand 5 to 25 feet.

LOG A GNINN08 UMORE PARK DRILLING LOGS.GPJ LOG A GNINN08.GDT Printed 5/30/08

DRILLING LOG

HOLE NO. G1300

Page 1 of 1

Property: UMore Park Property

Location: City of Rosemount & Empire Township, Dakota County, Minnesota

UTM Zone 15/NAD83/NAVD88
 491,500.34 mE +/- 0.02 m 4,951,300.11 mN +/- 0.02 m
 Elevation (ft.): 948.1 +/- 0.1 ft.
 Ground Water Depth (ft.): 62.0
 Ground Water Elevation (ft.): 886.1
 Site: Corn stubble field at natural grade.

Drilling Method: 9-inch flight auger Started: 10/24/07 12:20 PM
 Drilling Contractor: Braun Intertec Completed: 10/24/07 1:40 PM
 Drill Rig: CME-750 Logged By: J.D. Lehr

		DRILLING & SAMPLING				TEST RESULTS (%)					Geologic Interpretation	Economic Classification
Graphic Log	Depth (ft.)	Gravel Per Drill Action	Sample Runs	Sampled Intervals	Total + #4 Sieve	+ 1.5 Inch	1.5 Inch to 3/4 Inch	3/4 Inch to #4 Sieve	Sample Wt. (lbs)			
1.0	TOPSOIL. Silty, black.										Loess	
2.0	SILT. Brown.										Superior lobe outwash	
5.0	SAND & GRAVEL. Fine to medium sand, slightly dirty. Gravel to 2-1/2 inches.					31.4	9.4	8.5	13.4	21.1		
	SAND. Fine to medium sand. Very minor trace gravel to 1 inch.											
20.0												
	SAND. Fine to coarse sand. Very minor gravel to 1-1/2 inches.											
25.0												
	SAND. Fine to medium sand. No gravel.											
30.0												
	SAND. Fine to medium sand. Very minor trace gravel to 1 inch.											
35.0												
	SAND. Fine to coarse sand. Minor gravel to 1 inch.											
45.0												
	SAND. Fine to coarse sand. Very minor gravel to 2-1/2 inches.											
50.0												
	SAND. Fine to coarse sand. Very minor trace gravel to 3-1/2 inches.											
55.0												
	SAND. Fine to coarse sand. Very minor gravel to 2-1/2 inches.											
60.0												
	SAND. Fine to medium sand. No gravel. ▼											
65.0												
	T.D. 65 ft.											
No Samples taken. Only decent gravel percentage is from 35 to 45 feet. Higher percentage gravel indicated by drill action from 45 to 60 feet than reflected in samples.												

LOG A GNINN08 UMORE PARK DRILLING LOGS.GPJ LOG A GNINN08.GDT Printed 5/30/08

DRILLING LOG

HOLE NO. G1500

Page 1 of 1

Property: UMore Park Property

Location: City of Rosemount & Empire Township, Dakota County, Minnesota

UTM Zone 15/NAD83/NAVD88
 491,500.14 mE +/- 0.02 m 4,951,493.53 mN +/- 0.02 m
 Elevation (ft.): 952.5 +/- 0.1 ft.
 Ground Water Depth (ft.): Ground water not encountered
 Ground Water Elevation (ft.):
 Site: Edge of field road at natural grade.

Drilling Method: 9-inch flight auger Started: 9/21/07 2:45 PM
 Drilling Contractor: WDC Completed: 9/21/07 4:10 PM
 Drill Rig: CME-85 Logged By: J.D. Lehr

		DRILLING & SAMPLING					TEST RESULTS (%)				Geologic Interpretation	Economic Classification
Graphic Log	Depth (ft.)	Gravel Per Drill Action	Sample Runs	Sampled Intervals	Total + #4 Sieve	+ 1.5 Inch	1.5 Inch to 3/4 Inch	3/4 Inch to #4 Sieve	Sample Wt. (lbs)			
1.5	TOPSOIL. Silty, black.	951.0									Loess	
3.5	SILT. Brown.	949.0										
5.0	SAND. Fine to medium sand, slightly dirty. No gravel.	947.5									Superior lobe outwash	13.3% + #4
10.0	SAND. Fine sand: Very minor trace gravel to 1-1/2 inches.	942.5				3.9	0.5	0.9	2.5	33.7		
15.0	SAND & GRAVEL. Fine to coarse sand. Gravel to 3-1/2 inches.	937.5				29.7	8.0	6.6	15.0	27.0		
20.0	SAND. Fine sand. Very minor trace gravel to 3/4 inch.	932.5				2.3	0.0	0.3	2.0	22.4		
25.0	SAND. Fine to medium sand. Very minor gravel to 2 inches.	927.5				7.8	1.7	1.6	4.5	25.0		
30.0	SAND. Fine to coarse sand. Very minor gravel to 1-1/2 inches.	922.5				14.9	0.0	4.5	10.4	32.0		
35.0	SAND. Fine to medium sand. Very minor trace gravel to 1 inch.					4.3	0.0	0.5	3.8	24.7		
40.0	SAND. Fine to medium sand. Very minor trace gravel to 1-1/2 inches.	912.5				2.6	0.0	0.7	2.0	20.8		
45.0	SAND. Fine to coarse sand. Minor gravel to 1-1/2 inches.	907.5				4.4	0.0	2.0	2.4	24.9		
50.0	SAND & GRAVEL. Fine to coarse sand. Gravel to 1-1/2 inches.	902.5				18.6	0.5	4.0	14.1	33.9		
55.0	SAND & GRAVEL. Fine to coarse sand. Gravel to 1-1/2 inches.	897.5				25.7	1.2	8.3	16.2	30.6		
60.0	SAND. Fine to medium sand. Minor gravel to 1-3/4 inches.	892.5				21.2	6.8	4.9	9.5	21.8		
65.0	SAND & GRAVEL. Fine to coarse sand. Gravel to 4 inches.	887.5				26.8	11.0	1.9	13.9	29.6		
	T.D. 65 ft.											

LOG A GNNIN08 UMORE PARK DRILLING LOGS.GPJ LOG A GNNIN08.GDT Printed 5/30/08

DRILLING LOG

HOLE NO. G1700

Page 1 of 1

Property: UMore Park Property

Location: City of Rosemount & Empire Township, Dakota County, Minnesota

UTM Zone 15/NAD83/NAVD88

491,499.53 mE +/- 0.02 m 4,951,699.74 mN +/- 0.02 m

Elevation (ft.): 951.4 +/- 0.1 ft.

Ground Water Depth (ft.): Ground water not encountered

Ground Water Elevation (ft.):

Site: Snow covered plowed field at natural grade.

Drilling Method: 9-inch flight auger

Started: 12/12/07 2:00 PM

Drilling Contractor: Braun Intertec

Completed: 12/12/07 3:50 PM

Drill Rig: CME-750

Logged By: J.D. Lehr

		DRILLING & SAMPLING					TEST RESULTS (%)				Geologic Interpretation	Economic Classification
Graphic Log	Depth (ft.)	Gravel Per Drill Action	Sample Runs	Sampled Intervals	Total + #4 Sieve	+ 1.5 Inch	1.5 Inch to 3/4 Inch	3/4 Inch to #4 Sieve	Sample Wt. (lbs)			
1.5	TOPSOIL. Silty, black.										Loess	
5.0	SILT. Brown.											
10.0	SAND. Fine sand. Very minor trace pea gravel.					2.1	0.0	0.2	1.8	24.4	Superior lobe outwash	18.1 % + #4
15.0	SAND. Fine to medium sand. Very minor gravel to 1-1/2 inches.					8.5	2.4	1.6	4.4	26.1		
20.0	SAND. Fine to coarse sand. Minor gravel to 1-1/4 inches.					16.2	0.0	4.9	11.3	30.1		
25.0	SAND. Fine to medium sand. Very minor trace gravel to 1-1/4 inches.					4.9	0.7	0.7	3.5	26.8		
30.0	SAND. Fine to coarse sand. Minor gravel to 3 inches.					21.5	8.8	4.5	8.3	39.4		
35.0	SAND. Fine to coarse sand. Minor gravel to 2-1/2 inches.					19.3	5.0	4.2	10.1	29.6		
40.0	SAND. Fine to very coarse sand. Minor gravel to 2-1/2 inches.					24.0	4.1	3.9	16.0	39.5		
45.0	SAND & GRAVEL. Fine to very coarse sand. Gravel to 3 inches.					27.4	13.4	3.1	10.9	36.0		
50.0	SAND & GRAVEL. Fine to coarse sand. Gravel to 1-3/4 inches.					28.5	1.3	5.3	22.0	37.0		
55.0	SAND. Fine to coarse sand. Minor gravel to 3-1/2 inches.					26.4	2.1	3.5	20.7	33.4		
60.0	SAND. Fine to medium sand. Very minor gravel to 1-1/4 inches.					20.3	5.2	2.7	12.5	31.9		
65.0	T.D. 65 ft.											

LOG A GNNIN08 UMORE PARK DRILLING LOGS.GPJ LOG A GNNIN08.GDT Printed 5/30/08