

# DRILLING LOG

## HOLE NO. C0100

Page 1 of 1

Property: UMore Park Property

Location: City of Rosemount & Empire Township, Dakota County, Minnesota

UTM Zone 15/NAD83/NAVD88  
 491,106.25 mE +/- 0.02 m 4,950,100.21 mN +/- 0.02 m  
 Elevation (ft.): 947.8 +/- 0.1 ft.  
 Ground Water Depth (ft.): 55.5  
 Ground Water Elevation (ft.): 892.3  
 Site: Edge of field road at natural grade.

Drilling Method: 9-inch flight auger Started: 9/19/07 3:25 PM  
 Drilling Contractor: WDC Completed: 9/19/07 5:10 PM  
 Drill Rig: CME-85 Logged By: J.D. Lehr

Depth (ft.)	Graphic Log	Gravel Per Drill Action	Sample Runs	Sampled Intervals	TEST RESULTS (%)					Geologic Interpretation	Economic Classification	
					Total + #4 Sieve	+ 1.5 Inch	1.5 Inch to 3/4 Inch	3/4 Inch to #4 Sieve	Sample Wt. (lbs)			
2.0	TOPSOIL. Silty, black.										Loess	
3.5	SILT. Brown.											
5.0	SAND. Fine to medium sand. Very minor gravel to 3/4 inch.				11.5	0.9	2.0	8.6	31.1	Superior lobe outwash	13.3 % + #4	
10.0	SAND. Fine to coarse sand. Very minor gravel to 1-1/2 inches.				7.0	0.0	1.2	5.8	22.7			
15.0	SAND. Fine to coarse sand. Very minor gravel to 1 inch.				9.0	0.0	2.8	6.2	24.4			
20.0	SAND. Fine to medium sand. Very minor gravel to 1 inch.				16.3	3.4	3.0	9.9	22.9			
25.0	SAND. Fine to coarse sand. Minor gravel to 2-1/2 inches.				16.3	2.1	2.2	12.1	21.4			
30.0	SAND. Fine to coarse sand. Very minor gravel to 3 inches.				14.2	5.6	2.1	6.4	25.8			
35.0	SAND. Fine to coarse sand. Minor gravel to 1-1/2 inches.				12.4	3.2	1.9	7.3	22.3			
40.0	SAND. Fine to coarse sand. Minor gravel to 1-1/2 inches.				20.4	1.6	4.7	14.1	27.6	Lacustrine sediment		
45.0	SAND & GRAVEL. Fine to coarse sand, very dirty. Gravel to 1-1/2 inches. Gradational with silt below.											
48.0	SILT. Clayey, sandy.									Till		
55.0	TILL. Clayey, brown to gray. Refusal (tight) at 61 feet.											
61.0	T.D. 61 ft.											
Interval 45 to 48 feet too dirty - did not sample.												

LOG A GNNIN08 UMORE PARK DRILLING LOGS.GPJ LOG A GNNIN08.GDT Printed 5/30/08

# DRILLING LOG

## HOLE NO. C0300

Page 1 of 1

Property: UMore Park Property

Location: City of Rosemount & Empire Township, Dakota County, Minnesota

UTM Zone 15/NAD83/NAVD88

491,106.06 mE +/- 0.02 m 4,950,300.17 mN +/- 0.02 m

Elevation (ft.): 947.9 +/- 0.1 ft.

Ground Water Depth (ft.): 50.0

Ground Water Elevation (ft.): 897.9

Site: Edge of field road at natural grade.

Drilling Method: 9-inch flight auger

Started: 9/20/07 7:00 AM

Drilling Contractor: WDC

Completed: 9/20/07 8:35 AM

Drill Rig: CME-85

Logged By: J.D. Lehr

### DRILLING & SAMPLING

### TEST RESULTS (%)

Geologic Interpretation

Economic Classification

Graphic Log	Depth (ft.)	Gravel Per Drill Action	Sample Runs	Sampled Intervals	Total + #4 Sieve	+ 1.5 Inch	1.5 Inch to 3/4 Inch	3/4 Inch to #4 Sieve	Sample Wt. (lbs)	Geologic Interpretation	Economic Classification
3.0	944.9									Loess	
4.5	943.4										
10.0	937.9				24.1	0.8	3.2	20.1	24.0	Superior lobe outwash	16.8 % + #4
15.0	932.9				16.7	0.0	1.8	15.0	22.6		
20.0	927.9										
25.0	922.9				19.0	0.9	5.6	12.4	26.3		
30.0	917.9				7.3	0.0	2.2	5.1	20.0		
35.0	912.9				38.8	0.9	3.3	34.6	30.7		
49.0	898.9										
50.0	897.9									Lacustrine sediment	

TILL. Clayey, gray.

50.0 SAND. Fine sand, very iron stained. No gravel.

Bit was wet at 50 feet. Seems somewhat high for water table.

T.D. 50 ft.

LOG A GNNIN08 UMORE PARK DRILLING LOGS.GPJ LOG A GNNIN08.GDT Printed 5/30/08

# DRILLING LOG

## HOLE NO. C0500

Page 1 of 1

Property: UMore Park Property

Location: City of Rosemount & Empire Township, Dakota County, Minnesota

UTM Zone 15/NAD83/NAVD88  
 491,106.51 mE +/- 0.02 m 4,950,499.16 mN +/- 0.02 m  
 Elevation (ft.): 951.7 +/- 0.1 ft.  
 Ground Water Depth (ft.): 58.0  
 Ground Water Elevation (ft.): 893.7  
 Site: Edge of field road at natural grade.

Drilling Method: 9-inch flight auger Started: 9/20/07 8:50 AM  
 Drilling Contractor: WDC Completed: 9/20/07 10:35 AM  
 Drill Rig: CME-85 Logged By: J.D. Lehr

		DRILLING & SAMPLING					TEST RESULTS (%)					Geologic Interpretation	Economic Classification
Graphic Log	Depth (ft.)	Gravel Per Drill Action	Sample Runs	Sampled Intervals	Total + #4 Sieve	+ 1.5 Inch	1.5 Inch to 3/4 Inch	3/4 Inch to #4 Sieve	Sample Wt. (lbs)				
2.0	TOPSOIL. Silty, black.	949.7										Loess	
3.5	SILT. Brown.	948.2											
5.0	SAND. Fine to medium sand, slightly dirty. Minor gravel to 1-1/2 inches.	946.7				12.0	0.0	4.5	7.6	37.5	Superior lobe outwash	19.0 % + #4	
10.0	SAND. Fine sand: Very minor gravel to 1 inch.	941.7				17.2	1.5	1.7	13.9	29.4			
15.0	SAND. Fine to coarse sand. Minor gravel to 2-1/2 inches.	936.7				8.2	0.0	1.4	6.8	30.2			
	SAND. Fine to medium sand. Very minor gravel to 1-1/2 inches.					10.7	0.0	2.9	7.8	28.4			
25.0		926.7				8.0	0.0	1.6	6.3	32.0			
30.0	SAND. Fine to coarse sand. Very minor gravel to 1-1/4 inches.	921.7				33.0	10.2	9.4	13.4	35.4			
35.0	SAND & GRAVEL. Fine to medium sand. Gravel to 4 inches.	916.7				32.9	8.3	5.1	19.5	33.2			
40.0	SAND & GRAVEL. Fine to coarse sand. Gravel to 2-1/2 inches.	911.7				35.7	20.2	1.9	13.6	29.8			
45.0	SAND & GRAVEL. Fine to coarse sand. Gravel to 6 inches.	906.7				12.4	2.7	4.6	5.0	25.0			
50.0	SAND. Fine sand, dirty. Very minor gravel to 1-1/2 inches.	901.7				11.8	2.3	3.5	6.1	24.8			
55.0	SAND. Fine to medium sand, slightly dirty. Very minor gravel to 1-1/2 inches.	896.7				26.5	3.1	7.6	15.8	27.6			
62.0	SAND & GRAVEL. Fine to coarse sand, dirty. Gravel to 1-1/2 inches. Abundant till balls present.	889.7									Till		
65.0	TILL. Clayey, brown.	886.7											
	T.D. 65 ft.												

Mistakenly discarded 15 to 20 foot sample. Not much gravel 5 to 30 feet. Dirty material 45 to 62 feet may be too dirty and have too many till balls.

LOG-A-GNINN08-UMORE PARK DRILLING LOGS.GPJ LOG-A-GNINN08.GDT Printed: 5/30/08

# DRILLING LOG

## HOLE NO. C0700

Page 1 of 1

Property: UMore Park Property

Location: City of Rosemount & Empire Township, Dakota County, Minnesota

UTM Zone 15/NAD83/NAVD88

491,105.72 mE +/- 0.02 m 4,950,699.89 mN +/- 0.02 m

Elevation (ft.): 947.2 +/- 0.1 ft.

Ground Water Depth (ft.): Ground water not encountered

Ground Water Elevation (ft.):

Site: Edge of field road at natural grade.

Drilling Method: 9-inch flight auger

Started: 9/20/07 10:50 AM

Drilling Contractor: WDC

Completed: 9/20/07 12:35 PM

Drill Rig: CME-85

Logged By: J.D. Lehr

Depth (ft.)	Graphic Log	Gravel Per Drill Action	Sample Runs	Sampled Intervals	TEST RESULTS (%)					Geologic Interpretation	Economic Classification	
					Total + #4 Sieve	+ 1.5 Inch	1.5 Inch to 3/4 Inch	3/4 Inch to #4 Sieve	Sample Wt. (lbs)			
2.0	TOPSOIL. Silty, black.											
5.0	SILT. Brown.									Loess		
10.0	SAND. Fine to medium sand. Very minor gravel to 1 inch.				8.4	0.5	2.1	5.8	31.0	Superior lobe outwash	19.0 % + #4	
15.0	SAND. Fine sand. Very minor trace gravel to 1 inch.				4.5	0.0	2.0	2.5	25.2			
20.0	SAND & GRAVEL. Fine to coarse sand. Gravel to 3-1/2 inches.				37.0	13.5	6.7	16.8	37.3			
25.0	SAND. Fine to coarse sand. Minor gravel to 2-1/2 inches.				19.6	5.9	5.2	8.5	24.4			
30.0	SAND. Fine to medium sand. Very minor gravel to 1-1/2 inches.				7.1	0.0	1.6	5.4	25.3			
40.0	SAND & GRAVEL. Fine to coarse sand. Gravel to 3 inches.				26.3	4.7	3.8	17.8	34.2			
44.0	SAND. Fine to medium sand. Very minor gravel to 2 inches, mostly less than 3/4 inch.				34.3	10.0	6.2	18.1	28.4			
45.0	SILT. Brown.				15.0	8.2	0.2	6.5	9.8			
55.0	T.D. 55 ft.									Lacustrine sediment		

LOG A GNNIN08 UMORE PARK DRILLING LOGS.GPJ LOG A GNNIN08.GDT Printed 5/30/08

# DRILLING LOG

## HOLE NO. C0900

Page 1 of 1

Property: UMore Park Property

Location: City of Rosemount & Empire Township, Dakota County, Minnesota

UTM Zone 15/NAD83/NAVD88  
 491,099.19 mE +/- 0.02 m 4,950,872.70 mN +/- 0.02 m  
 Elevation (ft.): 951.2 +/- 0.1 ft.  
 Ground Water Depth (ft.): 62.0  
 Ground Water Elevation (ft.): 889.2  
 Site: Center of field road at natural grade.

Drilling Method: 9-inch flight auger Started: 9/20/07 1:20 PM  
 Drilling Contractor: WDC Completed: 9/20/07 3:10 PM  
 Drill Rig: CME-85 Logged By: J.D. Lehr

		DRILLING & SAMPLING				TEST RESULTS (%)				Geologic Interpretation	Economic Classification
Graphic Log	Depth (ft.)	Gravel Per Drill Action	Sample Runs	Sampled Intervals	Total + #4 Sieve	+ 1.5 Inch	1.5 Inch to 3/4 Inch	3/4 Inch to #4 Sieve	Sample Wt. (lbs)		
3.0	948.2									Loess	
4.0	947.2										
5.0	946.2										
10.0	941.2				13.8	2.0	2.8	9.0	36.3		
15.0	936.2				8.4	1.0	0.4	7.1	24.7		
					15.8	2.1	4.8	9.0	22.9		
25.0	926.2				15.6	4.4	1.8	9.4	19.7		
30.0	921.2				14.6	0.0	2.0	12.6	23.0		
35.0	916.2				27.4	14.7	5.1	7.6	33.2	Superior lobe outwash	18.0 % + #4
40.0	911.2				15.7	1.8	3.9	10.1	21.4		
45.0	906.2				16.9	1.5	4.2	11.1	22.3		
50.0	901.2				14.5	4.0	1.4	9.1	23.7		
55.0	896.2				17.5	0.0	0.9	16.6	19.3		
					31.4	0.0	3.1	28.3	26.0		
65.0	886.2				25.5	0.0	2.4	23.1	29.2		
	T.D. 65 ft.										

LOG A GNNIN08 UMORE PARK DRILLING LOGS.GPJ LOG A GNNIN08.GDT Printed 5/30/08

# DRILLING LOG

## HOLE NO. C1100

Page 1 of 1

Property: UMore Park Property

Location: City of Rosemount & Empire Township, Dakota County, Minnesota

UTM Zone 15/NAD83/NAVD88

491,100.13 mE +/- 0.02 m 4,951,098.81 mN +/- 0.02 m

Elevation (ft.): 942.2 +/- 0.1 ft.

Ground Water Depth (ft.): Ground water not encountered

Ground Water Elevation (ft.):

Site: Corn field at natural grade.

Drilling Method: 9-inch flight auger

Started: 9/20/07 3:25 PM

Drilling Contractor: WDC

Completed: 9/20/07 5:30 PM

Drill Rig: CME-85

Logged By: J.D. Lehr

Depth (ft.)	Graphic Log	Gravel Per Drill Action	Sample Runs	Sampled Intervals	TEST RESULTS (%)					Geologic Interpretation	Economic Classification	
					Total + #4 Sieve	+ 1.5 Inch	1.5 Inch to 3/4 Inch	3/4 Inch to #4 Sieve	Sample Wt. (lbs)			
2.0	TOPSOIL. Silty, black.										Loess	
4.0	SILT. Brown.											
5.0	SAND & GRAVEL. Fine to coarse sand, dirty. Gravel to 1-1/2 inches.				21.1	0.0	2.1	19.0	30.2	Superior lobe outwash	28.7 % + #4	
10.0	SAND. Medium to very coarse sand, slightly dirty. Minor gravel to 1 inch, mostly pea gravel.				14.5	1.6	4.0	8.9	22.7			
15.0	SAND. Fine sand. Very minor gravel to 2 inches.				6.0	0.0	0.6	5.5	25.9			
20.0	SAND. Fine sand. Very minor gravel to 1/2 inch.				22.8	4.0	5.7	13.1	30.6			
25.0	SAND. Fine to medium sand. Minor gravel to 1-1/2 inches.				29.6	7.6	8.2	13.8	30.1			
30.0	SAND & GRAVEL. Fine to coarse sand. Gravel to 3-1/2 inches.				40.9	6.7	7.7	26.5	30.8			
35.0	GRAVEL & SAND. Fine to coarse sand. Gravel to 1-1/2 inches.				38.9	0.5	6.0	32.5	31.3			
40.0	SAND & GRAVEL. Fine to coarse sand. Gravel to 1-1/2 inches.				41.4	1.0	6.5	34.0	18.5			
45.0	GRAVEL & SAND. Fine to coarse sand. Gravel to 1-1/2 inches.				39.7	0.0	11.4	28.3	29.6			
52.0	SAND & GRAVEL. Fine to coarse sand. Gravel to 1-1/2 inches. Very rocky (drill action) from 50 to 52 feet. Refusal in coarse gravel at 52 feet.											
	T.D. 52 ft.											

Broke off top auger at 52 feet. Refusal in coarse gravel at 52 feet. Field photographs are incorrectly labeled "C1000"

LOG A GNNIN08 UMORE PARK DRILLING LOGS.GPJ LOG A GNNIN08.GDT Printed 5/30/08

# DRILLING LOG

## HOLE NO. C1300

Page 1 of 1

Property: UMore Park Property

Location: City of Rosemount & Empire Township, Dakota County, Minnesota

UTM Zone 15/NAD83/NAVD88  
 491,101.65 mE +/- 0.02 m 4,951,297.52 mN +/- 0.02 m  
 Elevation (ft.): 947.6 +/- 0.1 ft.  
 Ground Water Depth (ft.): 58.0  
 Ground Water Elevation (ft.): 889.6  
 Site: Corn field at natural grade.

Drilling Method: 9-inch flight auger Started: 9/21/07 7:25 AM  
 Drilling Contractor: WDC Completed: 9/21/07 9:00 AM  
 Drill Rig: CME-85 Logged By: J.D. Lehr

		DRILLING & SAMPLING					TEST RESULTS (%)				Geologic Interpretation	Economic Classification
Graphic Log	Depth (ft.)	Gravel Per Drill Action	Sample Runs	Sampled Intervals	Total + #4 Sieve	+ 1.5 Inch	1.5 Inch to 3/4 Inch	3/4 Inch to #4 Sieve	Sample Wt. (lbs)			
2.5	TOPSOIL. Silty, black.										Loess	
4.0	SILT. Brown.											
5.0	SAND. Fine to medium sand, slightly dirty. No gravel.					6.3	0.0	0.5	5.9	33.9	Superior lobe outwash	14.0 % + #4
	SAND. Fine to medium sand. Very minor gravel to 3/4 inch.					6.8	0.0	0.9	5.9	29.2		
15.0	SAND. Fine to coarse sand. Minor gravel to 2-1/2 inches.					24.5	4.5	7.4	12.6	33.7		
25.0	SAND. Fine to medium sand. Very minor gravel to 1-1/4 inches.					20.7	5.9	4.5	10.3	29.8		
30.0	SAND. Fine to medium sand. Minor gravel to 1 inch.					9.9	0.0	4.1	5.7	24.2		
35.0	SAND. Fine sand. No gravel.					17.3	0.0	2.7	14.7	21.9		
65.0												
	T.D. 65 ft.											

LOG A GNINN08 UMORE PARK DRILLING LOGS.GPJ LOG A GNINN08.GDT Printed 5/30/08

# DRILLING LOG

HOLE NO. **C1500**

Page 1 of 1

Property: UMore Park Property

Location: City of Rosemount & Empire Township, Dakota County County, Minnesota

UTM Zone 15/NAD83/NAVD88

491,098.16 mE +/- 0.02 m 4,951,536.11 mN +/- 0.02 m

Elevation (ft.): 952.3 +/- 0.1 ft.

Ground Water Depth (ft.): Ground water not encountered

Ground Water Elevation (ft.):

Site: Between corn field and Co. Rd. 46 right-of-way at top of slope leading down into ditch. May be slightly below natural grade.

Drilling Method: 9-inch flight auger

Started: 9/21/07 9:25 AM

Drilling Contractor: WDC

Completed: 9/21/07 12:00 PM

Drill Rig: CME-85

Logged By: J.D. Lehr

			DRILLING & SAMPLING					TEST RESULTS (%)				Geologic Interpretation	Economic Classification
Graphic Log	Depth (ft.)	Gravel Per Drill Action	Sample Runs	Sampled Intervals	Total #4 Sieve	+ 1.5 Inch	1.5 Inch to 3/4 Inch	3/4 Inch to #4 Sieve	Sample Wt. (lbs)				
0.5	951.8											Loess	
2.0	950.3												
5.0	947.3												
15.0	937.3				12.0	0.0	5.0	6.9	40.4				
20.0	932.3				15.0	0.8	3.8	10.4	28.5				
25.0	927.3				44.5	1.5	6.6	36.5	32.8				
30.0	922.3				31.6	0.0	5.7	25.9	36.7				
					22.5	0.0	5.6	16.9	27.8				
					12.1	0.0	1.8	10.2	18.0			Superior lobe outwash	
					9.5	0.0	1.2	8.4	17.6				
					11.8	0.0	2.7	9.1	19.4				
					13.8	0.0	3.3	10.5	16.2				
					11.4	0.0	3.2	8.2	13.6				
					8.3	0.0	1.6	6.6	18.1				
65.0	887.3				11.1	0.0	1.1	9.9	18.7				
	T.D. 65 ft.												16.7% + #4

LOG A GNIN08 UMORE PARK DRILLING LOGS.GPJ LOG A GNIN08.GDT Printed 5/30/08



# DRILLING LOG

## HOLE NO. C1700

Page 1 of 1

Property: UMore Park Property

Location: City of Rosemount & Empire Township, Dakota County, Minnesota

UTM Zone 15/NAD83/NAVD88  
 491,099.69 mE +/- 0.02 m 4,951,701.43 mN +/- 0.02 m  
 Elevation (ft.): 937.1 +/- 0.1 ft.  
 Ground Water Depth (ft.): Ground water not encountered  
 Ground Water Elevation (ft.):  
 Site: Snow covered old pasture at natural grade.

Drilling Method: 9-inch flight auger Started: 12/5/07 11:00 AM  
 Drilling Contractor: Braun Intertec Completed: 12/5/07 11:40 AM  
 Drill Rig: CME-750 Logged By: J.D. Lehr

DRILLING & SAMPLING					TEST RESULTS (%)					Geologic Interpretation	Economic Classification
Graphic Log	Depth (ft.)	Gravel Per Drill Action	Sample Runs	Sampled Intervals	Total + #4 Sieve	+ 1.5 Inch	1.5 Inch to 3/4 Inch	3/4 Inch to #4 Sieve	Sample Wt. (lbs)		

<b>TOPSOIL.</b> Silty, black.	5.0	932.1										Loess	
<b>SILT.</b> Brown to gray.												Lacustrine sediment	
<b>SAND.</b> Fine sand, dirty. Very minor gravel to 1-1/2 inches.	21.0 25.0	916.1 912.1										Superior lobe outwash	
No samples taken - greater than 25 feet overburden.													
T.D. 25 ft.													

LOG A GNIN08 UMORE PARK DRILLING LOGS.GPJ LOG A GNIN08.GDT Printed 5/30/08

# DRILLING LOG

## HOLE NO. C1900

Page 1 of 1

Property: UMore Park Property

Location: City of Rosemount & Empire Township, Dakota County, Minnesota

UTM Zone 15/NAD83/NAVD88  
 491,100.91 mE +/- 0.02 m 4,951,899.79 mN +/- 0.02 m  
 Elevation (ft.): 930.0 +/- 0.1 ft.  
 Ground Water Depth (ft.): 44.0  
 Ground Water Elevation (ft.): 886.0  
 Site: Snow covered old pasture at natural grade.

Drilling Method: 9-inch flight auger Started: 12/5/07 8:00 AM  
 Drilling Contractor: Braun Intertec Completed: 12/5/07 12:20 PM  
 Drill Rig: CME-750 Logged By: J.D. Lehr

Depth (ft.)	Graphic Log	Gravel Per Drill Action	Sample Runs	Sampled Intervals	TEST RESULTS (%)					Geologic Interpretation	Economic Classification	
					Total + #4 Sieve	+ 1.5 Inch	1.5 Inch to 3/4 Inch	3/4 Inch to #4 Sieve	Sample Wt. (lbs)			
1.5	TOPSOIL. Silty, black.											
	SILT. Brown.									Loess		
13.0	928.5											
15.0	917.0											
15.0	SAND. Fine to medium sand. Very minor gravel to 1-1/4 inches.											
	SAND. Fine sand. Very minor trace gravel to 1 inch.											
25.0	915.0				5.5	0.0	1.4	4.2	32.9			
25.0	905.0				1.6	0.0	0.2	1.4	24.9			
30.0	900.0				22.7	4.2	7.3	11.3	22.5			
30.0	SAND. Fine to coarse sand. Minor gravel to 2-1/2 inches.				26.5	13.1	4.2	9.2	24.4			
35.0	895.0				2.1	0.0	0.2	1.9	24.3			
	SAND. Fine sand. Very minor trace gravel to 1 inch.				5.0	0.0	1.7	3.3	16.7	Superior lobe outwash		
45.0	885.0				20.9	0.0	0.6	20.3	26.7			
50.0	880.0				32.9	0.0	0.9	32.0	34.4			
55.0	875.0				34.2	0.8	4.9	28.5	34.7			
65.0	865.0				31.6	0.7	4.6	26.3	37.4			
	T.D. 65 ft.											

17.8% + #4

LOG A GNNIN08 UMORE PARK DRILLING LOGS.GPJ LOG A GNNIN08.GDT Printed 5/30/08

# DRILLING LOG

## HOLE NO. C2100

Page 1 of 1

Property: UMore Park Property

Location: City of Rosemount & Empire Township, Dakota County, Minnesota

UTM Zone 15/NAD83/NAVD88

491,099.50 mE +/- 0.02 m 4,952,100.58 mN +/- 0.02 m

Elevation (ft.): 954.9 +/- 0.1 ft.

Ground Water Depth (ft.): Ground water not encountered

Ground Water Elevation (ft.):

Site: Snow covered plowed field at natural grade.

Drilling Method: 9-inch flight auger

Started: 12/4/07 2:50 PM

Drilling Contractor: Braun Intertec

Completed: 12/4/07 4:40 PM

Drill Rig: CME-750

Logged By: J.D. Lehr

		DRILLING & SAMPLING					TEST RESULTS (%)					Geologic Interpretation	Economic Classification
Graphic Log	Depth (ft.)	Gravel Per Drill Action	Sample Runs	Sampled Intervals	Total + #4 Sieve	+ 1.5 Inch	1.5 Inch to 3/4 Inch	3/4 Inch to #4 Sieve	Sample Wt. (lbs)				
1.0	TOPSOIL. Silty, black.	953.9										Loess	
3.0	SILT. Brown.	951.9											
5.0	SAND & GRAVEL. Fine to coarse sand, slightly dirty. Gravel to 3-1/2 inches.	949.9				21.7	7.9	3.7	10.1	41.1		Superior lobe outwash	14.8 % + #4
10.0	SAND. Fine to medium sand. Minor gravel to 1-1/2 inches.	944.9				5.6	0.0	0.9	4.6	22.4			
15.0	SAND. Fine sand. Very minor gravel to 1-1/2 inches.	939.9				15.2	0.0	5.9	9.4	21.3			
20.0	SAND. Fine to medium sand. Minor gravel to 1-1/2 inches.	934.9				12.2	2.8	2.3	7.1	31.7			
25.0	SAND. Fine to medium sand. Very minor gravel to 2 inches.	929.9				12.2	2.4	2.7	7.0	34.5			
30.0	SAND. Fine to medium sand. Very minor gravel to 1 inch.	924.9				6.4	0.0	0.9	5.5	29.1			
35.0	SAND. Fine to medium sand. Very minor gravel to 2 inches.	919.9				16.0	0.0	1.7	14.3	25.4			
40.0	SAND. Fine to coarse sand. Very minor gravel to 1 inch.	914.9				23.8	0.0	4.3	19.5	22.0			
45.0	SAND. Fine to coarse sand. Minor gravel to 1 inch.	909.9				28.1	8.4	2.9	16.7	18.3			
50.0	SAND. Fine to coarse sand. Minor gravel to 1-1/2 inches.	904.9											
55.0	SAND & GRAVEL. Fine to coarse sand. Gravel to 3 inches.	899.9											
60.0	SAND. Fine to medium sand. Very minor gravel to 1-1/2 inches.	894.9											
65.0	SAND. Fine to medium sand. Very minor gravel to 1-1/2 inches.	889.9											
	T.D. 65 ft.												

LOG A GNNIN08 UMORE PARK DRILLING LOGS.GPJ LOG A GNNIN08.GDT Printed 5/30/08

# DRILLING LOG

## HOLE NO. C2300

Page 1 of 1

Property: UMore Park Property

Location: City of Rosemount & Empire Township, Dakota County, Minnesota

UTM Zone 15/NAD83/NAVD88

491,100.30 mE +/- 0.02 m 4,952,299.86 mN +/- 0.02 m

Elevation (ft.): 953.1 +/- 0.1 ft.

Ground Water Depth (ft.): Ground water not encountered

Ground Water Elevation (ft.):

Site: Snow covered plowed field at natural grade.

Drilling Method: 9-inch flight auger

Started: 12/4/07 1:00 PM

Drilling Contractor: Braun Intertec

Completed: 12/4/07 2:40 PM

Drill Rig: CME-750

Logged By: J.D. Lehr

Depth (ft.)	Graphic Log	Gravel Per Drill Action	Sample Runs	Sampled Intervals	TEST RESULTS (%)					Geologic Interpretation	Economic Classification
					Total + #4 Sieve	+ 1.5 Inch	1.5 Inch to 3/4 Inch	3/4 Inch to #4 Sieve	Sample Wt. (lbs)		
1.0	TOPSOIL. Silty, black.									Loess	
4.5	SILT. Brown.										
5.0	SAND. Fine to coarse sand, slightly dirty. Minor gravel to 3/4 inch.				19.9	0.7	7.3	11.9	24.6	Superior lobe outwash	18.7% + #4
10.0	SAND. Fine to medium sand. Minor gravel to 1-1/2 inches.				26.4	5.4	8.2	12.8	36.1		
15.0	SAND & GRAVEL. Fine to coarse sand. Gravel to 2 inches.				23.4	3.3	6.0	14.0	24.3		
20.0	SAND. Fine to coarse sand. Minor gravel to 1-1/2 inches.				22.1	6.2	5.7	10.2	29.4		
25.0	SAND. Fine to coarse sand. Minor gravel to 3-1/2 inches.				4.1	0.0	0.7	3.4	27.1		
30.0	SAND. Fine sand. Very minor gravel to 1 inch.				11.5	1.8	3.6	6.1	27.8		
35.0	SAND. Fine sand. Very minor trace gravel to 1/2 inch.				27.4	2.6	4.3	20.5	34.2		
40.0	SAND. Fine sand. Very minor gravel to 1 inch.				29.5	6.2	5.2	18.1	36.9		
45.0	SAND & GRAVEL. Fine to very coarse sand. Gravel to 1-3/4 inches.				25.8	1.5	9.7	14.6	32.8	Lacustrine sediment	
50.0	SAND & GRAVEL. Fine to very coarse sand. Gravel to 3-1/2 inches.										
55.0	SAND & GRAVEL. Fine to coarse sand. Gravel to 1-1/2 inches.										
60.0	SILT. Brown.										
65.0	T.D. 65 ft.										

LOG A GNNIN08 UMORE PARK DRILLING LOGS.GPJ LOG A GNNIN08.GDT Printed 5/30/08

# DRILLING LOG

## HOLE NO. C2500

Page 1 of 1

Property: UMore Park Property

Location: City of Rosemount & Empire Township, Dakota County, Minnesota

UTM Zone 15/NAD83/NAVD88

491,109.20 mE +/- 0.02 m 4,952,499.56 mN +/- 0.02 m

Elevation (ft.): 952.6 +/- 0.1 ft.

Ground Water Depth (ft.): Ground water not encountered

Ground Water Elevation (ft.):

Site: Edge of snow covered field road at natural grade.

Drilling Method: 9-inch flight auger

Started: 12/4/07 7:35 AM

Drilling Contractor: Braun Intertec

Completed: 12/4/07 12:20 PM

Drill Rig: CME-750

Logged By: J.D. Lehr

Depth (ft.)	Graphic Log	Gravel Per Drill Action	Sample Runs	Sampled Intervals	TEST RESULTS (%)					Geologic Interpretation	Economic Classification	
					Total + #4 Sieve	+ 1.5 Inch	1.5 Inch to 3/4 Inch	3/4 Inch to #4 Sieve	Sample Wt. (lbs)			
1.5	TOPSOIL. Silty, black.											
3.5	SILT. Brown.									Loess		
5.0	SAND. Very fine to fine sand, dirty. No gravel.											
10.0	SAND & GRAVEL. Fine to coarse sand. Gravel to 1-1/2 inches.				25.5	0.0	4.4	21.2	33.7			
15.0	SAND. Fine to coarse sand. Minor gravel to 1-1/2 inches.				15.8	2.0	6.0	7.8	21.2			
20.0	SAND. Fine to medium sand. Very minor gravel to 1 inch.				5.3	0.0	2.0	3.3	19.1			
25.0	SAND. Fine to very coarse sand. Minor gravel to 2-1/2 inches.				21.5	3.8	5.5	12.3	34.9			
30.0	SAND. Fine to medium sand. Very minor trace gravel to 1 inch.				4.6	0.0	1.1	3.6	28.5			
35.0	SAND. Fine to medium sand. Very minor trace gravel to 1/2 inch.									Superior lobe outwash		
40.0	SAND. Fine to coarse sand. Very minor gravel to 1-1/2 inches.				5.4	0.0	0.8	4.6	28.0			
45.0	NO RECOVERY. Samples displaced while drilling silt below. Drilled like sand with some gravel.											
50.0	SAND. Fine to coarse sand. Minor gravel to 1-1/4 inches. Very rocky (drill action) from 50 to 55 feet.				22.1	0.0	5.5	16.7	30.4			
55.0	SAND. Fine to coarse sand. Minor gravel to 2-1/4 inches.				23.1	2.4	5.7	15.1	26.3			
61.0	SILT. Brown.											
65.0	T.D. 65 ft.									Lacustrine sediment		

13.5% + #4

LOG A GNNIN08 UMORE PARK DRILLING LOGS.GPJ LOG A GNNIN08.GDT Printed 5/30/08

# DRILLING LOG

## HOLE NO. C2700

Page 1 of 1

Property: UMore Park Property

Location: City of Rosemount & Empire Township, Dakota County, Minnesota

UTM Zone 15/NAD83/NAVD88

491,098.95 mE +/- 0.02 m 4,952,699.81 mN +/- 0.02 m

Elevation (ft.): 953.5 +/- 0.1 ft.

Ground Water Depth (ft.): Ground water not encountered

Ground Water Elevation (ft.):

Site: Snow covered soybean stubble field at natural grade.

Drilling Method: 9-inch flight auger

Started: 12/3/07 1:40 PM

Drilling Contractor: Braun Intertec

Completed: 12/3/07 3:15 PM

Drill Rig: CME-750

Logged By: J.D. Lehr

		DRILLING & SAMPLING				TEST RESULTS (%)				Geologic Interpretation	Economic Classification	
Graphic Log	Depth (ft.)	Gravel Per Drill Action	Sample Runs	Sampled Intervals	Total + #4 Sieve	+ 1.5 Inch	1.5 Inch to 3/4 Inch	3/4 Inch to #4 Sieve	Sample Wt. (lbs)			
1.0	TOPSOIL. Silty, black.	952.5									Loess	
3.0	SILT. Brown.	950.5										
5.0	SAND. Fine sand. Very minor gravel to 1-1/2 inches.	948.5				20.8	1.4	5.0	14.4	36.9	Superior lobe outwash	23.9% + #4
10.0	SAND. Fine to coarse sand. Minor gravel to 1-1/2 inches.	943.5				14.7	3.7	2.9	8.2	26.5		
15.0	SAND. Fine to medium sand. Very minor gravel to 1-3/4 inches.	938.5				17.8	1.3	5.3	11.3	22.8		
20.0	SAND. Fine to medium sand. Minor gravel to 1-3/4 inches.	933.5				21.6	2.2	3.6	15.8	29.1		
25.0	SAND. Fine to medium sand. Minor gravel to 1-3/4 inches.	928.5				15.0	3.4	3.1	8.5	26.9		
30.0	SAND & GRAVEL. Fine to coarse sand. Gravel to 1-1/2 inches.	923.5				38.3	2.3	12.7	23.3	28.7		
35.0	SAND & GRAVEL. Fine to medium sand. Gravel to 2 inches.	918.5				32.9	8.6	9.0	15.4	32.3		
40.0	SAND & GRAVEL. Fine to medium sand. Gravel to 2-1/2 inches.	913.5				35.4	15.7	8.2	11.5	30.2		
50.0	SAND. Fine to medium sand. Minor gravel to 1-3/4 inches.	903.5				31.1	15.7	6.3	9.0	32.3		
55.0	SAND. Fine to medium sand. Very minor gravel to 1 inch.	898.5				21.7	2.7	6.5	12.5	21.3		
62.0	SILT. Brown.	891.5				14.6	0.0	3.1	11.5	21.1	Lacustrine sediment	
65.0	T.D. 65 ft.	888.5										

LOG A GNNIN08 UMORE PARK DRILLING LOGS.GPJ LOG A GNNIN08.GDT Printed 5/30/08

# DRILLING LOG

## HOLE NO. C2900

Page 1 of 1

Property: UMore Park Property

Location: City of Rosemount & Empire Township, Dakota County, Minnesota

UTM Zone 15/NAD83/NAVD88

491,099.45 mE +/- 0.02 m 4,952,899.83 mN +/- 0.02 m

Elevation (ft.): 948.3 +/- 0.1 ft.

Ground Water Depth (ft.): Ground water not encountered

Ground Water Elevation (ft.):

Site: Snow covered soybean stubble field at natural grade.

Drilling Method: 9-inch flight auger

Started: 12/3/07 11:15 AM

Drilling Contractor: Braun Intertec

Completed: 12/3/07 1:30 PM

Drill Rig: CME-750

Logged By: J.D. Lehr

Depth (ft.)	Graphic Log	Gravel Per Drill Action	Sample Runs	Sampled Intervals	TEST RESULTS (%)					Geologic Interpretation	Economic Classification	
					Total + #4 Sieve	+ 1.5 Inch	1.5 Inch to 3/4 Inch	3/4 Inch to #4 Sieve	Sample Wt. (lbs)			
1.5	TOPSOIL. Silty, black.										Loess	
4.5	SILT. Brown.											
5.0	SAND. Fine to coarse sand. Very minor trace gravel to 1/2 inch.				35.2	8.5	4.8	21.9	32.9		Superior lobe outwash	26.8% + #4
10.0	SAND & GRAVEL. Fine to coarse sand. Gravel to 3 inches.				42.7	8.4	8.6	25.7	28.0			
15.0	GRAVEL & SAND. Fine to coarse sand. Gravel to 3 inches.				30.4	0.0	6.9	23.4	30.9			
20.0	SAND & GRAVEL. Fine to coarse sand. Gravel to 1 inch.				30.6	2.2	7.3	21.0	38.8			
30.0	SAND & GRAVEL. Fine to coarse sand. Gravel to 1-1/2 inches.				26.9	2.3	5.8	18.7	31.9			
35.0	SAND & GRAVEL. Fine to coarse sand. Gravel to 2-1/2 inches.				25.6	3.5	5.4	16.7	25.8			
40.0	SAND. Fine to medium sand. Very minor gravel to 1 inch.				8.9	0.0	0.9	8.0	16.2			
45.0	SAND & GRAVEL. Fine to medium sand. Gravel to 1 inch.				26.4	0.0	7.8	18.5	21.9			
50.0	SAND. Fine to coarse sand. Minor gravel to 1-1/4 inches.				19.6	0.0	6.9	12.7	25.4			
55.0	SAND. Fine to medium sand, dirty. No gravel.				21.6	0.0	4.4	17.1	24.6			
60.0	SILT. Brown.									Lacustrine sediment		
65.0	T.D. 65 ft.											

LOG A GNIN08 UMORE PARK DRILLING LOGS.GPJ LOG A GNIN08.GDT Printed 5/30/08

# DRILLING LOG

## HOLE NO. C3100

Page 1 of 1

Property: UMore Park Property

Location: City of Rosemount & Empire Township, Dakota County, Minnesota

UTM Zone 15/NAD83/NAVD88

491,099.56 mE +/- 0.02 m 4,953,099.75 mN +/- 0.02 m

Elevation (ft.): 947.1 +/- 0.1 ft.

Ground Water Depth (ft.): 64.0

Ground Water Elevation (ft.): 883.1

Site: Snow covered soybean stubble field at natural grade.

Drilling Method: 9-inch flight auger

Started: 12/3/07 9:35 AM

Drilling Contractor: Braun Intertec

Completed: 12/3/07 11:10 AM

Drill Rig: CME-750

Logged By: J.D. Lehr

Depth (ft.)	Graphic Log	Gravel Per Drill Action	Sample Runs	Sampled Intervals	TEST RESULTS (%)					Geologic Interpretation	Economic Classification	
					Total + #4 Sieve	+ 1.5 Inch	1.5 Inch to 3/4 Inch	3/4 Inch to #4 Sieve	Sample Wt. (lbs)			
1.0	TOPSOIL. Silty, black.										Loess	
3.0	SILT. Brown.											
5.0	SAND & GRAVEL. Fine to coarse sand, slightly dirty. Gravel to 2 inches.				22.8	2.2	4.6	16.1	47.5			
10.0	SAND. Fine to coarse sand. Minor gravel to 1-3/4 inches.				13.1	3.9	1.7	7.5	25.9			
15.0	SAND. Fine to coarse sand. Very minor gravel to 2-1/2 inches.				18.5	2.0	6.9	9.5	33.5			
20.0	SAND. Fine to coarse sand. Minor gravel to 1-1/2 inches.				20.6	1.1	4.6	14.9	36.8			
25.0	SAND. Fine to very coarse sand. Minor gravel to 1-1/2 inches.				24.1	0.0	7.3	16.8	29.5			
30.0	SAND. Fine to medium sand. Minor gravel to 3 inches.				20.2	6.2	2.9	11.1	27.1			
35.0	SAND. Fine to coarse sand. Minor gravel to 1-1/2 inches.				21.5	11.0	3.5	7.1	27.7		Superior lobe outwash	
40.0	SAND. Fine sand. Very minor trace gravel to 1 inch.				5.0	0.0	1.0	4.0	20.1			
45.0	SAND. Fine to medium sand. Very minor gravel to 1-3/4 inches.				12.8	1.9	3.1	7.8	20.8			
50.0	SAND. Fine to coarse sand. Minor gravel to 1-3/4 inches.				18.5	6.4	5.2	6.9	27.1			
55.0	SAND. Fine to medium sand. Very minor gravel to 1-1/2 inches.											
60.0	SAND. Very fine to fine sand. Very minor trace gravel to 1 inch.											
65.0	T.D. 65 ft.											

17.9% + #4

LOG A GNNIN08 UMORE PARK DRILLING LOGS.GPJ LOG A GNNIN08.GDT Printed 5/30/08



# DRILLING LOG

## HOLE NO. C3300

Page 1 of 2

Property: UMore Park Property

Location: City of Rosemount & Empire Township, Dakota County, Minnesota

UTM Zone 15/NAD83/NAVD88  
 491,100.02 mE +/- 0.02 m 4,953,298.83 mN +/- 0.02 m  
 Elevation (ft.): 953.8 +/- 0.1 ft.  
 Ground Water Depth (ft.): 70.0  
 Ground Water Elevation (ft.): 883.8  
 Site: Snow covered soybean stubble field at natural grade.

Drilling Method: 4x6 Rotasonic Started: 2/14/08 2:30 PM  
 Drilling Contractor: Traut Wells Completed: 2/14/08 3:50 PM  
 Drill Rig: Versasonic Logged By: J.D. Lehr

		DRILLING & SAMPLING					TEST RESULTS (%)					Geologic Interpretation	Economic Classification
Graphic Log	Depth (ft.)	Gravel Per Drill Action	Sample Runs	Sampled Intervals	Total + #4 Sieve	+ 1.5 Inch	1.5 Inch to 3/4 Inch	3/4 Inch to #4 Sieve	Sample Wt. (lbs)				
<b>TOPSOIL.</b> Silty, black.	4.0	949.8									Loess		
<b>SILT.</b> Brown.	8.0	945.8											
<b>SAND.</b> Fine sand; slightly dirty. Very minor gravel to 1 inch.	10.0	943.8				13.6	0.0	3.2	10.4	33.6	Superior lobe outwash	16.9% + #4	
<b>SAND.</b> Fine to coarse sand. Very minor gravel to 1-1/2 inches.	15.0	938.8											
<b>SAND &amp; GRAVEL.</b> Fine to very coarse sand. Gravel to 1-3/4 inches.	20.0	933.8				31.8	1.8	10.4	19.6	42.9			
<b>SAND.</b> Fine to very coarse sand, slightly dirty. Minor gravel to 1-3/4 inches.	30.0	923.8				15.5	1.4	2.7	11.4	36.3			
<b>SAND.</b> Fine to medium sand. No gravel.	35.0	918.8									Lacustrine		
<b>SAND.</b> Fine to coarse sand. Minor gravel to 2 inches.	40.0	913.8				9.8	0.7	1.3	7.8	35.2			
<b>SAND &amp; GRAVEL.</b> Fine to coarse sand. Gravel to 1-3/4 inches.	44.0	909.8				25.7	2.4	4.9	18.4	24.5			
<b>SILT.</b> Brown.	46.0	907.8											
<b>SAND.</b> Fine to medium sand. No gravel.	60.0	893.8									Superior lobe outwash		
<b>NO RECOVERY.</b> Very hard drilling from 68 to 78 feet.	68.0												

Continued Next Page

LOG A GNNIN08 UMORE PARK DRILLING LOGS.GPJ LOG A GNNIN08.GDT Printed 5/30/08

# DRILLING LOG

## HOLE NO. C3300

Page 2 of 2

Property: UMore Park Property

Location: City of Rosemount & Empire Township, Dakota County, Minnesota

UTM Zone 15/NAD83/NAVD88  
 491,100.02 mE +/- 0.02 m 4,953,298.83 mN +/- 0.02 m  
 Elevation (ft.): 953.8 +/- 0.1 ft.  
 Ground Water Depth (ft.): 70.0  
 Ground Water Elevation (ft.): 883.8  
 Site: Snow covered soybean stubble field at natural grade.

Drilling Method: 4x6 Rotasonic Started: 2/14/08 2:30 PM  
 Drilling Contractor: Traut Wells Completed: 2/14/08 3:50 PM  
 Drill Rig: Versasonic Logged By: J.D. Lehr

DRILLING & SAMPLING					TEST RESULTS (%)					Geologic Interpretation	Economic Classification
Graphic Log	Depth (ft.)	Gravel Per Drill Action	Sample Runs	Sampled Intervals	Total + #4 Sieve	+ 1.5 Inch	1.5 Inch to 3/4 Inch	3/4 Inch to #4 Sieve	Sample Wt. (lbs)		

**NO RECOVERY.** Very hard drilling from 68 to 78 feet. *(continued)*  
 80.0 873.8

**SANDSTONE.** Very fine sand, yellowish brown to white.  
 100.0 853.8



T.D.  
100 ft.

St. Peter Sandstone

LOG A GNIN08 UMORE PARK DRILLING LOGS.GPJ LOG A GNIN08.GDT Printed 5/30/08

# DRILLING LOG

## HOLE NO. CC0000

Page 1 of 1

Property: UMore Park Property

Location: City of Rosemount & Empire Township, Dakota County County, Minnesota

UTM Zone 15/NAD83/NAVD88  
 493,701.60 mE +/- 0.02 m 4,950,000.65 mN +/- 0.02 m  
 Elevation (ft.): 938.0 +/- 0.1 ft.  
 Ground Water Depth (ft.): 58.5  
 Ground Water Elevation (ft.): 879.5  
 Site: Plowed field at natural grade.

Drilling Method: 9-inch flight auger Started: 10/29/07 7:50 AM  
 Drilling Contractor: Braun Intertec Completed: 10/29/07 9:15 AM  
 Drill Rig: CME-750 Logged By: J.D. Lehr

Depth (ft.)	Graphic Log	Gravel Per Drill Action	Sample Runs	Sampled Intervals	TEST RESULTS (%)					Geologic Interpretation	Economic Classification
					Total + #4 Sieve	+ 1.5 Inch	1.5 Inch to 3/4 Inch	3/4 Inch to #4 Sieve	Sample Wt. (lbs)		
2.0	TOPSOIL. Silty, black.									Loess	
4.0	SILT. Brown.										
5.0	SAND. Fine to medium sand, slightly dirty. No gravel.									Superior lobe outwash	16.1% + #4
5.0	SAND. Fine to medium sand. Very minor gravel to 1 inch.				8.5	0.0	1.1	7.4	23.9		
10.0					8.8	0.0	1.2	7.6	23.5		
15.0	SAND. Fine sand. Very minor trace gravel to 1/2 inch.				3.7	0.0	0.0	3.7	20.9		
20.0	SAND. Fine to medium sand. Minor gravel to 2 inches.				16.2	1.2	4.2	10.7	26.5		
25.0	SAND. Fine to medium sand. Very minor gravel to 1-1/4 inches.				12.5	0.0	3.8	8.7	25.1		
30.0	SAND. Fine to coarse sand. Minor gravel to 1 inch.				21.5	0.0	4.5	17.0	23.6		
35.0	SAND. Fine to coarse sand. Minor gravel to 1-1/2 inches.				20.4	0.0	3.4	17.1	26.9		
40.0	SAND. Fine to coarse sand. Minor gravel to 3-1/2 inches.				23.1	3.2	7.3	12.7	29.9		
45.0	SAND. Fine sand. Minor gravel to 5 inches, mostly less than 2 inches.				20.8	14.0	4.0	2.8	22.6		
50.0	SAND. Fine to medium sand. Very minor gravel to 1-1/2 inches.				9.3	0.0	3.8	5.5	20.4		
55.0	SAND. Fine to coarse sand. Very minor gravel to 1-1/4 inches.				14.2	0.0	2.2	11.9	26.2		
60.0	SAND & GRAVEL. Fine to coarse sand. Gravel to 1-3/4 inches.				36.3	2.9	8.6	24.8	30.0		
65.0	T.D. 65 ft.										

LOG A GNNIN08 UMORE PARK DRILLING LOGS.GPJ LOG A GNNIN08.GDT Printed 5/30/08

# DRILLING LOG

## HOLE NO. CC0200

Page 1 of 1

Property: UMore Park Property

Location: City of Rosemount & Empire Township, Dakota County, Minnesota

UTM Zone 15/NAD83/NAVD88  
 493,701.23 mE +/- 0.02 m 4,950,200.06 mN +/- 0.02 m  
 Elevation (ft.): 938.4 +/- 0.1 ft.  
 Ground Water Depth (ft.): 57.0  
 Ground Water Elevation (ft.): 881.4  
 Site: Plowed field at natural grade.

Drilling Method: 9-inch flight auger Started: 10/29/07 9:20 AM  
 Drilling Contractor: Braun Intertec Completed: 10/29/07 11:00 AM  
 Drill Rig: CME-750 Logged By: J.D. Lehr

		DRILLING & SAMPLING				TEST RESULTS (%)				Geologic Interpretation	Economic Classification
Graphic Log	Depth (ft.)	Gravel Per Drill Action	Sample Runs	Sampled Intervals	Total + #4 Sieve	+ 1.5 Inch	1.5 Inch to 3/4 Inch	3/4 Inch to #4 Sieve	Sample Wt. (lbs)		
1.5	<b>TOPSOIL.</b> Silty, black.										Loess
3.0	<b>SILT.</b> Brown.										
5.0	<b>SAND.</b> Fine to medium sand, slightly dirty. Minor gravel to 1-1/2 inches.					15.7	0.0	6.8	8.8	31.4	Superior lobe outwash <b>13.7% + #4</b>
10.0	<b>SAND.</b> Fine to medium sand. Minor gravel to 1-1/2 inches.					14.6	3.5	3.8	7.3	24.5	
15.0	<b>SAND.</b> Fine to medium sand. Very minor gravel to 2 inches.					7.3	0.0	2.8	4.5	23.7	
20.0	<b>SAND.</b> Fine sand. Very minor gravel to 2-1/2 inches.					4.6	1.0	0.2	3.3	24.6	
25.0	<b>SAND.</b> Fine sand. Very minor trace gravel to 1-1/2 inches.					15.4	1.6	1.6	12.2	26.9	
30.0	<b>SAND.</b> Fine to coarse sand. Minor gravel to 2-1/2 inches.					14.0	0.0	1.8	12.2	25.4	
35.0	<b>SAND.</b> Fine to coarse sand. Very minor gravel to 1 inch.					15.2	0.6	1.0	13.5	25.2	
40.0	<b>SAND.</b> Fine to coarse sand. Minor gravel to 1-1/2 inches.					22.8	6.3	3.5	13.0	28.6	
45.0	<b>SAND.</b> Fine to coarse sand. Minor gravel to 3-1/2 inches.					2.5	0.0	1.0	1.5	20.2	
50.0	<b>SAND.</b> Fine to medium sand. Very minor trace gravel to 1-1/4 inches.					10.1	5.5	1.7	2.9	20.6	
55.0	<b>SAND.</b> Fine to medium sand. Very minor gravel to 3-1/2 inches.					13.6	0.0	0.7	12.9	19.5	
60.0	<b>SAND.</b> Fine to coarse sand. Very minor gravel to 1 inch.					28.3	0.0	4.1	24.3	30.9	
65.0	<b>SAND &amp; GRAVEL.</b> Fine to coarse sand. Gravel to 1-1/2 inches.										
	T.D. 65 ft.										

LOG A GNNIN08 UMORE PARK DRILLING LOGS.GPJ LOG A GNNIN08.GDT Printed 5/30/08

# DRILLING LOG

## HOLE NO. CC0400

Page 1 of 1

Property: UMore Park Property

Location: City of Rosemount & Empire Township, Dakota County, Minnesota

UTM Zone 15/NAD83/NAVD88

493,706.69 mE +/- 0.02 m 4,950,399.30 mN +/- 0.02 m

Elevation (ft.): 938.2 +/- 0.1 ft.

Ground Water Depth (ft.): 58.0

Ground Water Elevation (ft.): 880.2

Site: Plowed field at natural grade.

Drilling Method: 9-inch flight auger

Started: 10/29/07 11:05 AM

Drilling Contractor: Braun Intertec

Completed: 10/29/07 3:20 PM

Drill Rig: CME-750

Logged By: J.D. Lehr

		DRILLING & SAMPLING					TEST RESULTS (%)					Geologic Interpretation	Economic Classification
Graphic Log	Depth (ft.)	Gravel Per Drill Action	Sample Runs	Sampled Intervals	Total + #4 Sieve	+ 1.5 Inch	1.5 Inch to 3/4 Inch	3/4 Inch to #4 Sieve	Sample Wt. (lbs)				
1.0 <b>TOPSOIL.</b> Silty, black.	937.2										Loess		
3.0 <b>SILT.</b> Brown.	935.2												
5.0 <b>SAND &amp; GRAVEL.</b> Fine to coarse sand, slightly dirty. Gravel to 2 inches.	933.2												
10.0 <b>SAND.</b> Fine to coarse sand. Minor gravel to 1-1/4 inches.	928.2					23.8	4.9	5.6	13.3	32.3			
15.0 <b>SAND.</b> Fine to coarse sand. Very minor gravel to 3-1/2 inches.	923.2					14.0	7.3	1.4	5.2	19.8			
<b>SAND.</b> Fine sand. No gravel.						1.8	0.0	0.0	1.8	18.3			
25.0	913.2					4.1	0.0	0.4	3.8	23.2			
<b>SAND.</b> Fine to coarse sand. Minor gravel to 2 inches.						23.7	3.3	3.8	16.6	25.7			
30.0 <b>SAND &amp; GRAVEL.</b> Fine to coarse sand. Gravel to 2 inches.	908.2												
35.0 <b>SAND &amp; GRAVEL.</b> Fine to coarse sand. Gravel to 1 inch.	903.2					26.4	1.4	4.6	20.4	25.4	Superior lobe outwash		
40.0 <b>SAND.</b> Fine to medium sand. Very minor trace gravel to 3/4 inch.	898.2					34.8	0.0	3.4	31.4	24.6			
45.0 <b>SAND.</b> Fine to medium sand. No gravel.	893.2												
50.0 <b>SAND.</b> Fine to coarse sand. Very minor trace gravel to 1-1/4 inches.	888.2												
55.0 <b>SAND.</b> Fine to coarse sand. Very minor trace gravel to 3/4 inch.	883.2												
60.0 <b>SAND.</b> Fine to coarse sand. Very minor gravel to 1 inch.	878.2												
65.0	873.2												
	T.D. 65 ft.												

18.7% + #4

LOG A GNNIN08 UMORE PARK DRILLING LOGS.GPJ LOG A GNNIN08.GDT Printed 5/30/08

# DRILLING LOG

## HOLE NO. CC0600

Page 1 of 1

Property: UMore Park Property

Location: City of Rosemount & Empire Township, Dakota County, Minnesota

UTM Zone 15/NAD83/NAVD88  
 493,699.36 mE +/- 0.02 m 4,950,600.12 mN +/- 0.02 m  
 Elevation (ft.): 938.9 +/- 0.1 ft.  
 Ground Water Depth (ft.): 57.0  
 Ground Water Elevation (ft.): 881.9  
 Site: Alfalfa field at natural grade.

Drilling Method: 9-inch flight auger Started: 10/30/07 12:35 PM  
 Drilling Contractor: Braun Intertec Completed: 10/30/07 1:50 PM  
 Drill Rig: CME-750 Logged By: J.D. Lehr

		DRILLING & SAMPLING					TEST RESULTS (%)				Geologic Interpretation	Economic Classification
Graphic Log	Depth (ft.)	Gravel Per Drill Action	Sample Runs	Sampled Intervals	Total + #4 Sieve	+ 1.5 Inch	1.5 Inch to 3/4 Inch	3/4 Inch to #4 Sieve	Sample Wt. (lbs)			
1.5	<b>TOPSOIL.</b> Silty, black.										Loess	
3.0	<b>SILT.</b> Brown.											
5.0	<b>SAND.</b> Fine sand, slightly dirty. Very minor gravel to 1 inch.					13.2	0.0	4.9	8.3	28.0	Superior lobe outwash	18.9% + #4
10.0	<b>SAND.</b> Fine to medium sand. Very minor gravel to 1-1/2 inches.					12.8	1.4	4.8	6.5	25.6		
15.0	<b>SAND.</b> Fine sand. Very minor gravel to 2 inches.					12.7	0.0	3.5	9.2	22.8		
20.0	<b>SAND.</b> Fine to coarse sand. Very minor gravel to 1 inch.					6.1	0.0	2.7	3.4	22.7		
25.0	<b>SAND.</b> Fine sand. Very minor gravel to 1-1/4 inches.					23.4	0.0	3.3	20.1	23.5		
30.0	<b>SAND.</b> Fine to coarse sand. Minor gravel to 1 inch, mostly less than 1/2 inch.					20.5	0.0	1.2	19.3	27.9		
35.0	<b>SAND.</b> Fine to coarse sand. Minor gravel to 1 inch.					25.7	6.0	5.8	13.9	22.0		
40.0	<b>SAND &amp; GRAVEL.</b> Fine to coarse sand. Gravel to 2-1/2 inches.					38.8	5.4	6.7	26.7	32.7		
45.0	<b>SAND &amp; GRAVEL.</b> Fine to very coarse sand, slightly dirty. Gravel to 3-1/2 inches. High percentage pea gravel.										Lacustrine sediment	
50.0	<b>SAND.</b> Fine sand. Very minor trace gravel to 1-1/2 inches.											
55.0	<b>SAND.</b> Fine to medium sand. No gravel.											
65.0	<b>SAND.</b> Very fine sand, dirty. No gravel. ▼											
	T.D. 65 ft.											

LOG A GNNIN08 UMORE PARK DRILLING LOGS.GPJ LOG A GNNIN08.GDT Printed 5/30/08

# DRILLING LOG

## HOLE NO. CC0800

Page 1 of 1

Property: UMore Park Property

Location: City of Rosemount & Empire Township, Dakota County, Minnesota

UTM Zone 15/NAD83/NAVD88

493,707.58 mE +/- 0.02 m 4,950,806.10 mN +/- 0.02 m

Elevation (ft.): 937.8 +/- 0.1 ft.

Ground Water Depth (ft.): Ground water not encountered

Ground Water Elevation (ft.):

Site: Edge of soybean stubble field approximately 20 feet north of old ditch, assumed at natural grade.

Drilling Method: 9-inch flight auger Started: 10/31/07 12:55 PM

Drilling Contractor: Braun Intertec Completed: 10/31/07 2:10 PM

Drill Rig: CME-750

Logged By: J.D. Lehr

		DRILLING & SAMPLING					TEST RESULTS (%)					Geologic Interpretation	Economic Classification
Graphic Log	Depth (ft.)	Gravel Per Drill Action	Sample Runs	Sampled Intervals	Total + #4 Sieve	+ 1.5 Inch	1.5 Inch to 3/4 Inch	3/4 Inch to #4 Sieve	Sample Wt. (lbs)				
1.5	TOPSOIL. Silty, black.	936.3									Loess		
5.0	SILT. Brown.	932.8											
15.0	SAND. Fine to coarse sand. Minor gravel to 1 inch.	922.8			12.4	0.0	1.2	11.2	27.5	Superior lobe outwash	12.4 % + #4		
20.0	SAND. Fine sand. Very minor trace gravel to 1/2 inch.	917.8			13.9	0.0	2.5	11.3	22.0				
25.0	SAND. Fine sand. No gravel.	912.8			3.3	0.0	0.0	3.3	19.7				
30.0	NO RECOVERY. Sample displaced while drilling sandstone below. Probably similar to 15 to 25 feet based in drill action.	907.8			0.6	0.0	0.0	0.6	18.1				
37.0	SAND & GRAVEL. Fine to coarse sand, slightly dirty. Gravel to 1-1/2 inches. Lower contact based on drill action.	900.8			32.0	0.0	7.3	24.7	19.0	St. Peter Sandstone			
45.0	SANDSTONE. Very fine sand, white.	892.8											
	T.D. 45 ft.												

LOG A GNIN08 UMORE PARK DRILLING LOGS.GPJ LOG A GNIN08.GDT Printed 5/30/08

# DRILLING LOG

## HOLE NO. CC1000

Page 1 of 1

Property: UMore Park Property

Location: City of Rosemount & Empire Township, Dakota County, Minnesota

UTM Zone 15/NAD83/NAVD88

493,700.42 mE +/- 0.02 m 4,951,005.39 mN +/- 0.02 m

Elevation (ft.): 938.6 +/- 0.1 ft.

Ground Water Depth (ft.): Ground water not encountered

Ground Water Elevation (ft.):

Site: Edge of soybean stubble field at natural grade.

Drilling Method: 9-inch flight auger

Started: 10/31/07 3:20 PM

Drilling Contractor: Braun Intertec

Completed: 10/31/07 4:20 PM

Drill Rig: CME-750

Logged By: J.D. Lehr

		DRILLING & SAMPLING					TEST RESULTS (%)					Geologic Interpretation	Economic Classification
Graphic Log	Depth (ft.)	Gravel Per Drill Action	Sample Runs	Sampled Intervals	Total + #4 Sieve	+ 1.5 Inch	1.5 Inch to 3/4 Inch	3/4 Inch to #4 Sieve	Sample Wt. (lbs)				
1.0	TOPSOIL. Silty, black.	937.6									Loess		
3.0	SILT. Brown.	935.6											
5.0	SAND. Very fine to fine sand, dirty. Very minor gravel to 1 inch.	933.6									Superior lobe outwash	17.4% + #4	
10.0	SAND. Fine sand: Very minor gravel to 2 inches.	928.6				14.3	5.1	4.0	5.1	25.4			
15.0	SAND. Fine to medium sand. Minor gravel to 2-1/2 inches.	923.6				20.9	8.1	6.8	6.0	20.5			
20.0	SAND. Fine to medium sand. Very minor gravel to 2-1/2 inches.	918.6				14.8	3.9	3.7	7.2	23.4			
25.0	SAND. Fine to medium sand. Minor gravel to 4-1/2 inches, mostly less than 1-1/4 inches.	913.6				19.7	9.8	2.2	7.7	19.1			
30.0	NO RECOVERY. May be sand similar to above. Had sandstone right at 25 feet on 25 to 45 foot sampling run.	908.6									St. Peter Sandstone		
45.0	SANDSTONE. Very fine sand, white to yellowish brown. Hard nodules of sandstone present in samples. Explains drill action.	893.6											
	T.D. 45 ft.												

LOG A GNIN08 UMORE PARK DRILLING LOGS.GPJ LOG A GNIN08.GDT Printed 5/30/08



# DRILLING LOG

## HOLE NO. CC1200

Page 1 of 1

Property: UMore Park Property

Location: City of Rosemount & Empire Township, Dakota County County, Minnesota

UTM Zone 15/NAD83/NAVD88

493,699.48 mE +/- 0.02 m 4,951,200.93 mN +/- 0.02 m

Elevation (ft.): 941.0 +/- 0.1 ft.

Ground Water Depth (ft.): Ground water not encountered

Ground Water Elevation (ft.):

Site: Grassy area adjacent to idle field at natural grade.

Drilling Method: 9-inch flight auger

Started: 11/2/07 7:40 AM

Drilling Contractor: Braun Intertec

Completed: 11/2/07 9:25 AM

Drill Rig: CME-750

Logged By: J.D. Lehr

Depth (ft.)	Graphic Log	Gravel Per Drill Action	Sample Runs	Sampled Intervals	TEST RESULTS (%)				Geologic Interpretation	Economic Classification
					Total + #4 Sieve	+ 1.5 Inch	1.5 Inch to 3/4 Inch	3/4 Inch to #4 Sieve		
1.5	TOPSOIL. Silty, black.									Loess
4.0	SILT. Brown.									
5.0	SAND. Fine sand, slightly dirty. Very minor trace gravel to 1-1/2 inches. SAND. Fine sand: No gravel.				3.3	0.0	0.7	2.5	25.6	Superior lobe outwash
10.0					0.8	0.0	0.2	0.6	21.8	
15.0					0.5	0.0	0.0	0.5	17.2	
20.0					2.0	0.0	0.0	2.0	22.6	
25.0	SAND & GRAVEL. Fine to coarse sand. Gravel to 1-1/2 inches.				32.7	0.0	8.0	24.7	26.3	
30.0	SAND & GRAVEL. Fine to coarse sand. Gravel to 2 inches.				32.9	2.4	7.6	23.0	25.8	
35.0	SAND & GRAVEL. Fine to coarse sand. Gravel to 5 inches.				33.9	15.3	4.2	14.4	23.7	
40.0					32.4	12.8	4.8	14.9	28.7	
45.0	SAND & GRAVEL. Fine to coarse sand, dirty. Gravel to 1-1/2 inches. Gradational with below.				32.3	1.3	7.8	23.2	19.8	
50.0	SAND & GRAVEL. Fine to coarse sand, very dirty. Gravel to 1 inch. Gradational with below.									
52.0	CLAY. Reddish & brown mixed.									Lacustrine sediment
60.0	CLAY. Silty, gray.									
65.0	T.D. 65 ft.									

18.6 % + #4

LOG A GNINN08 UMORE PARK DRILLING LOGS.GPJ LOG A GNINN08.GDT Printed 5/30/08

# DRILLING LOG

## HOLE NO. CC1400

Page 1 of 1

Property: UMore Park Property

Location: City of Rosemount & Empire Township, Dakota County, Minnesota

UTM Zone 15/NAD83/NAVD88

493,700.07 mE +/- 0.02 m 4,951,380.26 mN +/- 0.02 m

Elevation (ft.): 937.3 +/- 0.1 ft.

Ground Water Depth (ft.): 62.0

Ground Water Elevation (ft.): 875.3

Site: Edge of field road, surface may be disturbed.

Drilling Method: 9-inch flight auger

Started: 11/1/07 3:15 PM

Drilling Contractor: Braun Intertec

Completed: 11/1/07 5:00 PM

Drill Rig: CME-750

Logged By: J.D. Lehr

### DRILLING & SAMPLING

### TEST RESULTS (%)

Geologic Interpretation  
Economic Classification

Graphic Log	Depth (ft.)	Gravel Per Drill Action	Sample Runs	Sampled Intervals	Total + #4 Sieve	+ 1.5 Inch	1.5 Inch to 3/4 Inch	3/4 Inch to #4 Sieve	Sample Wt. (lbs)	Geologic Interpretation	Economic Classification
0.5 <b>TOPSOIL.</b> Silty, sandy, dark brown.	936.8									Loess	
<b>SAND.</b> Very fine sand, dirty. No gravel. Lower contact based on drill action.	931.3										
10.0 <b>SAND.</b> Fine to medium sand. Very minor gravel to 1-1/4 inches.	927.3				11.6	0.0	3.7	7.9	22.8	Superior lobe outwash	22.4 % + #4
<b>SAND.</b> Fine to medium sand. Minor gravel to 3 inches.					17.7	7.9	1.8	8.0	21.9		
					21.3	6.5	2.9	11.8	26.6		
20.0 <b>SAND &amp; GRAVEL.</b> Fine to coarse sand. Gravel to 4-1/2 inches.	917.3				38.5	11.9	10.5	16.1	26.7		
					35.6	3.6	9.0	22.9	30.3		
30.0 <b>SAND.</b> Fine sand. Minor gravel to 2 inches.	907.3				23.6	1.8	8.7	13.1	25.4		
<b>SAND.</b> Fine to coarse sand. Minor gravel to 3 inches.	902.3				22.8	4.2	4.9	13.7	21.6		
					20.9	6.3	3.0	11.6	25.3		
45.0 <b>SAND.</b> Fine to coarse sand. Minor gravel to 1 inch.	892.3				15.0	0.0	2.6	12.4	14.9		
					17.3	0.0	1.4	15.9	19.1		
55.0 <b>SAND.</b> Fine to coarse sand. Minor gravel to 2-1/2 inches. Lower contact based on drill action.	882.3				19.7	5.3	1.7	12.7	17.4		
62.0 <b>CLAY.</b> Red, hard.	875.3									Lacustrine sediment	
65.0	872.3										
T.D. 65 ft.											

LOG-A-GNINN08-UMORE PARK DRILLING LOGS.GPJ LOG-A-GNINN08.GDT Printed 5/30/08

# DRILLING LOG

## HOLE NO. CC2400

Page 1 of 1

Property: UMore Park Property

Location: City of Rosemount & Empire Township, Dakota County, Minnesota

UTM Zone 15/NAD83/NAVD88

493,698.47 mE +/- 0.02 m 4,952,399.44 mN +/- 0.02 m

Elevation (ft.): 938.9 +/- 0.1 ft.

Ground Water Depth (ft.): Ground water not encountered

Ground Water Elevation (ft.):

Site: Snow covered field at natural grade.

Drilling Method: 9-inch flight auger

Started: 1/22/08 3:50 PM

Drilling Contractor: Braun Intertec

Completed: 1/22/08 5:10 PM

Drill Rig: CME-750

Logged By: J.D. Lehr

		DRILLING & SAMPLING					TEST RESULTS (%)					Geologic Interpretation	Economic Classification
Graphic Log	Depth (ft.)	Gravel Per Drill Action	Sample Runs	Sampled Intervals	Total + #4 Sieve	+ 1.5 Inch	1.5 Inch to 3/4 Inch	3/4 Inch to #4 Sieve	Sample Wt. (lbs)				
2.0	FILL. Sandy, silty, gravelly, brown.	936.9										Fill	
5.0	SAND. Fine to medium sand. Very minor gravel to 1 inch.	933.9										Superior lobe outwash	22.4 % + #4
10.0	SAND. Fine sand. Very minor trace gravel to 1 inch.	928.9				9.0	0.0	2.2	6.9	15.7			
15.0	SAND. Fine to medium sand. Very minor trace gravel to 1 inch.	923.9											
20.0	SAND. Fine to coarse sand. Very minor gravel to 1 inch.					12.7	0.0	3.5	9.2	33.6			
25.0		913.9											
30.0	SAND & GRAVEL. Fine to medium sand. Gravel to 1-3/4 inches.	908.9				25.0	4.1	8.8	12.0	30.4			
35.0	SAND & GRAVEL. Fine to coarse sand. Gravel to 2 inches.	903.9				36.5	7.2	6.9	22.4	19.9			
40.0	GRAVEL & SAND. Fine to coarse sand. Gravel to 2 inches.	898.9				43.9	5.3	7.8	30.8	22.5			
45.0	SAND. Fine to coarse sand. Minor gravel to 1-1/2 inches.	893.9				24.2	0.7	4.2	19.4	32.7			
50.0	SAND & GRAVEL. Fine to coarse sand. Gravel to 1-1/2 inches.	888.9				35.6	0.0	7.0	28.6	19.6			
55.0	SAND. Fine to coarse sand. Minor gravel to 1-1/2 inches.	883.9				18.5	1.3	1.8	15.4	28.5			
60.0	SAND. Fine to coarse sand. Minor gravel to 1-3/4 inches.	878.9				24.3	6.2	2.9	15.1	25.0			
65.0	SAND & GRAVEL. Fine to coarse sand. Gravel to 1-3/4 inches.	873.9				25.0	2.6	4.7	17.7	23.2			
	T.D. 65 ft.												

LOG A GNNIN08 UMORE PARK DRILLING LOGS.GPJ LOG A GNNIN08.GDT Printed 5/30/08

# DRILLING LOG

## HOLE NO. CC2600

Page 1 of 1

Property: UMore Park Property

Location: City of Rosemount & Empire Township, Dakota County, Minnesota

UTM Zone 15/NAD83/NAVD88

493,700.00 mE +/- 0.02 m 4,952,599.75 mN +/- 0.02 m

Elevation (ft.): 940.8 +/- 0.1 ft.

Ground Water Depth (ft.): Ground water not encountered

Ground Water Elevation (ft.):

Site: Snow covered field at natural grade.

Drilling Method: 9-inch flight auger

Started: 1/22/08 7:45 AM

Drilling Contractor: Braun Intertec

Completed: 1/22/08 9:25 AM

Drill Rig: CME-750

Logged By: J.D. Lehr

Depth (ft.)	Graphic Log	Gravel Per Drill Action	Sample Runs	Sampled Intervals	TEST RESULTS (%)					Geologic Interpretation	Economic Classification	
					Total + #4 Sieve	+ 1.5 Inch	1.5 Inch to 3/4 Inch	3/4 Inch to #4 Sieve	Sample Wt. (lbs)			
1.0	TOPSOIL. Silty, black.										Loess	
3.0	SILT. Brown.											
5.0	SAND & GRAVEL. Fine sand. Gravel to 1 inch.										Superior lobe outwash	16.8 % + #4
10.0	SAND. Fine to medium sand. Very minor gravel to 1 inch.				7.4	0.0	1.8	5.7	28.9			
15.0	SAND. Fine to medium sand. Very minor trace gravel to 1/2 inch.											
20.0	SAND. Fine to coarse sand. Very minor gravel to 1 inch.				11.5	0.7	2.2	8.6	31.2			
25.0	SAND. Fine to medium sand. Very minor gravel to 1-1/2 inches.											
30.0	SAND. Fine to coarse sand. Minor gravel to 2-1/2 inches.				18.8	5.8	3.1	9.9	32.0			
35.0	SAND. Fine to coarse sand. Minor gravel to 3-1/2 inches.				20.8	12.7	2.4	5.7	29.9			
40.0	SAND. Fine to coarse sand. Minor gravel to 1-1/2 inches.				20.7	5.9	5.2	9.7	26.3			
45.0	SAND & GRAVEL. Fine to coarse sand. Gravel to 2-1/2 inches.				31.8	8.2	9.5	14.1	33.9			
50.0	SAND. Fine to coarse sand. Minor gravel to 3-1/2 inches.				24.7	10.0	3.5	11.2	32.3			
55.0	SAND. Fine to coarse sand. Minor gravel to 2 inches.				17.5	3.1	2.4	12.0	23.3			
60.0	SAND. Fine to medium sand. Very minor gravel to 3/4 inch.											
65.0	SAND. Fine to medium sand. Very minor gravel to 1/2 inch.											
	T.D. 65 ft.											

LOG A GNIN08 UMORE PARK DRILLING LOGS.GPJ LOG A GNIN08.GDT Printed 5/30/08

# DRILLING LOG

## HOLE NO. CC2800

Page 1 of 1

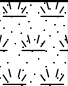
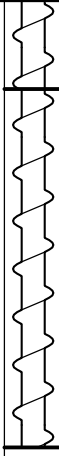




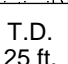
Property: UMore Park Property

Location: City of Rosemount & Empire Township, Dakota County, Minnesota

UTM Zone 15/NAD83/NAVD88  
 493,703.49 mE +/- 0.02 m 4,952,803.76 mN +/- 0.02 m  
 Elevation (ft.): 891.4 +/- 0.1 ft.  
 Ground Water Depth (ft.): 23.0  
 Ground Water Elevation (ft.): 868.4  
 Site: Snow covered low area at natural grade.

Drilling Method: 9-inch flight auger Started: 1/22/08 9:35 AM  
 Drilling Contractor: Braun Intertec Completed: 1/22/08 10:15 AM  
 Drill Rig: CME-750 Logged By: J.D. Lehr

DRILLING & SAMPLING					TEST RESULTS (%)					Geologic Interpretation	Economic Classification
Graphic Log	Depth (ft.)	Gravel Per Drill Action	Sample Runs	Sampled Intervals	Total + #4 Sieve	+ 1.5 Inch	1.5 Inch to 3/4 Inch	3/4 Inch to #4 Sieve	Sample Wt. (lbs)		

<p><b>TOPSOIL.</b> Silty, black.</p>											Loess	Superior lobe outwash
5.0	886.4	<p><b>SILT.</b> Brown. Lower contact based on drill action.</p>										
12.0	879.4	<p><b>SAND.</b> Fine to medium sand, slightly dirty. Very minor gravel to 1-1/4 inches.</p>										
15.0	876.4	<p><b>SAND.</b> Fine sand, slightly dirty. No gravel.</p>										
20.0	871.4	<p><b>SAND.</b> Fine to medium sand, slightly dirty. Very minor trace gravel to 1 inch. ▼</p>										
25.0	866.4	<p>T.D. 25 ft.</p>										
<p>No samples taken. Estimated less than 5 percent gravel from 12 to 25 feet.</p>												

LOG A GNINN08 UMORE PARK DRILLING LOGS.GPJ LOG A GNINN08.GDT Printed 5/30/08

# DRILLING LOG

## HOLE NO. CC3000

Page 1 of 1

Property: UMore Park Property

Location: City of Rosemount & Empire Township, Dakota County, Minnesota

UTM Zone 15/NAD83/NAVD88

493,707.20 mE +/- 0.02 m 4,952,999.75 mN +/- 0.02 m

Elevation (ft.): 936.1 +/- 0.1 ft.

Ground Water Depth (ft.): Ground water not encountered

Ground Water Elevation (ft.):

Site: Snow covered grassy area inside fence at former Navy facility at natural grade.

Drilling Method: 9-inch flight auger

Started: 1/21/08 11:20 AM

Drilling Contractor: Braun Intertec

Completed: 1/21/08 12:05 PM

Drill Rig: CME-750

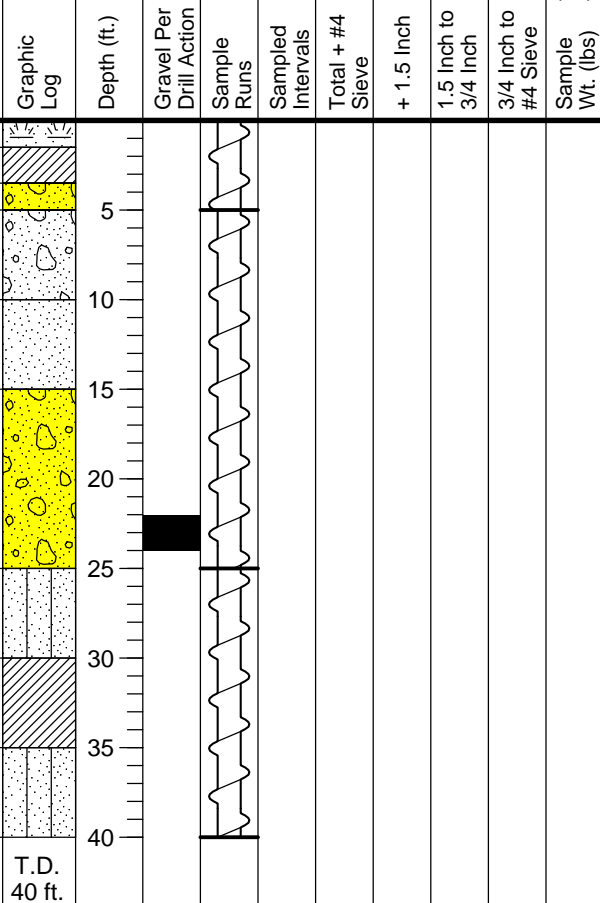
Logged By: J.D. Lehr

### DRILLING & SAMPLING

### TEST RESULTS (%)

Geologic Interpretation  
Economic Classification

Depth (ft.)	Soil Description	Elevation (ft.)
1.5	<b>TOPSOIL.</b> Silty, black.	934.6
3.5	<b>SILT.</b> Brown.	932.6
5.0	<b>SAND.</b> Fine to medium sand. Very minor gravel to 1-1/2 inches.	931.1
10.0	<b>SAND.</b> Fine to medium sand. Very minor trace gravel to 1 inch.	926.1
15.0	<b>SAND.</b> Fine sand. No gravel.	921.1
25.0	<b>SAND.</b> Fine to medium sand. Very minor gravel to 1-1/2 inches.	911.1
30.0	<b>SAND.</b> Very fine sand. No gravel.	906.1
35.0	<b>SILT.</b> Brown & reddish brown to gray.	901.1
40.0	<b>SAND.</b> Very fine sand. No gravel.	896.1
T.D.		40 ft.



Loess

Superior lobe outwash

Lacustrine sediment

No samples taken. Estimated less than 5 percent gravel from 3.5 to 25 feet.

LOG A GNNN08 UMORE PARK DRILLING LOGS.GPJ LOG A GNNN08.GDT Printed 5/30/08

# DRILLING LOG

## HOLE NO. CC3400

Page 1 of 1

Property: UMore Park Property

Location: City of Rosemount & Empire Township, Dakota County, Minnesota

UTM Zone 15/NAD83/NAVD88  
 493,710.47 mE +/- 0.02 m 4,953,398.96 mN +/- 0.02 m  
 Elevation (ft.): 905.2 +/- 0.1 ft.  
 Ground Water Depth (ft.): 19.0  
 Ground Water Elevation (ft.): 886.2  
 Site: Snow covered brushy area at natural grade.

Drilling Method: 9-inch flight auger Started: 1/21/08 10:40 AM  
 Drilling Contractor: Braun Intertec Completed: 1/21/08 11:05 AM  
 Drill Rig: CME-750 Logged By: J.D. Lehr

DRILLING & SAMPLING					TEST RESULTS (%)					Geologic Interpretation	Economic Classification
Graphic Log	Depth (ft.)	Gravel Per Drill Action	Sample Runs	Sampled Intervals	Total + #4 Sieve	+ 1.5 Inch	1.5 Inch to 3/4 Inch	3/4 Inch to #4 Sieve	Sample Wt. (lbs)		

1.0	<b>TOPSOIL.</b> Silty, dark brown.	904.2									Loess	
5.0	<b>SAND.</b> Fine to medium sand. Very minor gravel to 1-1/2 inches.	900.2									Superior lobe outwash	
	<b>SAND.</b> Fine to medium sand. No gravel.											
15.0		890.2										
20.0	<b>SAND.</b> Very fine to fine sand. Very minor trace gravel to 1/2 inch.	885.2										
24.0	<b>SAND.</b> Very fine to medium sand, slightly dirty. Very minor trace gravel to 1/2 inch.	881.2										
25.0	<b>SILT.</b> Brown.	880.2									Lacustrine sediment	
	No samples taken. Estimated less than 5 percent gravel from 1 to 24 feet.											
			T.D. 25 ft.									

LOG A GNINN08 UMORE PARK DRILLING LOGS.GPJ LOG A GNINN08.GDT Printed 5/30/08

# DRILLING LOG

## HOLE NO. CCC1300

Page 1 of 1

Property: UMore Park Property

Location: City of Rosemount & Empire Township, Dakota County, Minnesota

UTM Zone 15/NAD83/NAVD88  
 496,304.52 mE +/- 0.02 m 4,951,295.52 mN +/- 0.02 m  
 Elevation (ft.): 920.1 +/- 0.1 ft.  
 Ground Water Depth (ft.): 64.5  
 Ground Water Elevation (ft.): 855.6  
 Site: Edge of pit road approximately 2 feet below natural grade.

Drilling Method: 9-inch flight auger Started: 11/28/07 1:50 PM  
 Drilling Contractor: Braun Intertec Completed: 11/28/07 3:50 PM  
 Drill Rig: CME-750 Logged By: J.D. Lehr

Depth (ft.)	Graphic Log	Gravel Per Drill Action	Sample Runs	Sampled Intervals	TEST RESULTS (%)					Geologic Interpretation	Economic Classification
					Total + #4 Sieve	+ 1.5 Inch	1.5 Inch to 3/4 Inch	3/4 Inch to #4 Sieve	Sample Wt. (lbs)		
1.5	FILL. Gravel & dirty sand.									Fill	
5.0	SAND. Fine to medium sand. Very minor gravel to 2-1/2 inches.				9.9	3.5	0.7	5.6	25.6	Superior lobe outwash	25.5% + #4
10.0	SAND. Fine to medium sand. Minor gravel to 2 inches.				23.7	8.0	7.5	8.2	30.6		
15.0	SAND & GRAVEL. Fine to medium sand. Gravel to 1-1/2 inches.				28.5	4.7	10.5	13.3	33.3		
20.0	SAND & GRAVEL. Fine to coarse sand. Gravel to 1-3/4 inches.				28.1	2.2	5.8	20.0	19.7		
25.0	SAND. Fine to medium sand. Minor gravel to 1-1/2 inches.				21.3	1.9	4.6	14.8	30.3		
30.0	SAND & GRAVEL. Fine to coarse sand. Gravel to 4 inches.				34.2	11.6	8.1	14.6	35.6		
35.0	SAND & GRAVEL. Fine to medium sand. Gravel to 3 inches.				25.2	5.1	5.4	14.7	28.4		
40.0	SAND. Fine to coarse sand. Minor gravel to 1-1/4 inches.				23.5	1.2	8.4	13.9	24.6	Lacustrine sediment	
45.0	SAND & GRAVEL. Fine to coarse sand. Gravel to 2-1/2 inches.				30.5	6.5	6.1	17.8	33.3		
50.0	SAND. Very fine to fine sand. No gravel.										
65.0	T.D. 65 ft.										

LOG A GNNIN08 UMORE PARK DRILLING LOGS.GPJ LOG A GNNIN08.GDT Printed 5/30/08



# DRILLING LOG

## HOLE NO. CCC1500

Page 1 of 1

Property: UMore Park Property

Location: City of Rosemount & Empire Township, Dakota County, Minnesota

UTM Zone 15/NAD83/NAVD88  
 496,301.09 mE +/- 0.02 m 4,951,499.76 mN +/- 0.02 m  
 Elevation (ft.): 919.3 +/- 0.1 ft.  
 Ground Water Depth (ft.): 64.5  
 Ground Water Elevation (ft.): 854.8  
 Site: Corn stubble field at natural grade.

Drilling Method: 9-inch flight auger Started: 11/28/07 12:20 PM  
 Drilling Contractor: Braun Intertec Completed: 11/28/07 1:45 PM  
 Drill Rig: CME-750 Logged By: J.D. Lehr

Depth (ft.)	Graphic Log	Gravel Per Drill Action	Sample Runs	Sampled Intervals	TEST RESULTS (%)					Geologic Interpretation	Economic Classification
					Total + #4 Sieve	+ 1.5 Inch	1.5 Inch to 3/4 Inch	3/4 Inch to #4 Sieve	Sample Wt. (lbs)		
1.5	TOPSOIL. Silty, black.									Loess	
4.5	SILT. Brown.										
5.0	SAND. Fine sand. Very minor gravel to 3/4 inch.				6.4	1.2	2.3	3.0	27.9	Superior lobe outwash	19.5% + #4
10.0	SAND. Fine to medium sand. Very minor gravel to 1-3/4 inches.				25.4	16.4	4.0	5.1	31.3		
15.0	SAND & GRAVEL. Fine sand. Gravel to 3-1/2 inches.				25.8	8.8	6.4	10.6	28.4		
20.0	SAND & GRAVEL. Fine to coarse sand. Gravel to 2-1/2 inches.				17.0	3.2	5.4	8.5	33.9		
25.0	SAND & GRAVEL. Fine to coarse sand. Gravel to 1-1/2 inches, mostly less than 1/2 inch.				25.3	1.9	2.1	21.3	20.7		
30.0	SAND. Fine to coarse sand. Minor gravel to 1-1/2 inches.				18.3	0.9	4.5	12.9	23.2		
35.0	SAND. Fine to medium sand. Very minor gravel to 1 inch.										
40.0	SAND. Fine to medium sand. Very minor gravel to 1-1/2 inches.										
45.0	SAND. Fine sand. No gravel.										
55.0	SAND. Fine to medium sand. Very minor gravel to 3/4 inch.										
65.0	854.3										
	T.D. 65 ft.										

LOG A GNNIN08 UMORE PARK DRILLING LOGS.GPJ LOG A GNNIN08.GDT Printed 5/30/08

# DRILLING LOG

## HOLE NO. CCC1501

Page 1 of 2

Property: UMore Park Property

Location: City of Rosemount & Empire Township, Dakota County County, Minnesota

UTM Zone 15/NAD83/NAVD88  
 496,342.92 mE +/- 0.02 m 4,951,499.44 mN +/- 0.02 m  
 Elevation (ft.): 918.3 +/- 0.1 ft.  
 Ground Water Depth (ft.): 77.0  
 Ground Water Elevation (ft.): 841.3  
 Site: Snow covered corn stubble field at natural grade.

Drilling Method: 4x6 Rotasonic Started: 3/5/08 2:40 PM  
 Drilling Contractor: Traut Wells Completed: 3/5/08 4:45 PM  
 Drill Rig: Versasonic Logged By: J.D. Lehr

DRILLING & SAMPLING					TEST RESULTS (%)				Geologic Interpretation	Economic Classification
Graphic Log	Depth (ft.)	Gravel Per Drill Action	Sample Runs	Sampled Intervals	Total + #4 Sieve	+ 1.5 Inch	1.5 Inch to 3/4 Inch	3/4 Inch to #4 Sieve		

4.0	914.3									Loess	
<b>TOPSOIL.</b> Silty, black.											
8.0	910.3									Superior lobe outwash	
<b>SILT.</b> Brown.											
10.0	908.3										
<b>SAND.</b> Fine to medium sand, dirty. No gravel.											
15.0	903.3										
<b>SAND.</b> Fine to coarse sand. Very minor gravel to 1 inch.											
20.0	898.3										
<b>SAND.</b> Fine to coarse sand. Minor gravel to 3 inches.											
30.0	888.3										
<b>SAND.</b> Fine to coarse sand. Very minor gravel to 1-3/4 inches.											
40.0	878.3										
40.5	877.8										
<b>ROCK.</b>											
<b>SAND.</b> Fine to medium sand. No gravel.											
50.0	868.3										
<b>SAND.</b> Fine to coarse sand. Very minor gravel to 1-3/4 inches.											
55.0	863.3										
<b>SAND.</b> Very fine to fine sand. Very minor gravel to 1 inch.											
60.0	858.3										
<b>SAND.</b> Fine to coarse sand. Very minor trace gravel to 1 inch.											
70.0	848.3										
<b>SAND.</b> Fine to medium sand. Very minor trace gravel to 1-1/4 inches.											

**Continued Next Page**

LOG A GNNIN08 UMORE PARK DRILLING LOGS.GPJ LOG A GNNIN08.GDT Printed 5/30/08

# DRILLING LOG

## HOLE NO. CCC1501

Page 2 of 2

Property: UMore Park Property

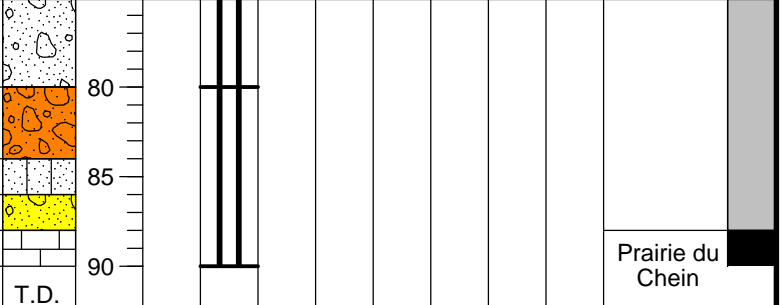
Location: City of Rosemount & Empire Township, Dakota County, Minnesota

UTM Zone 15/NAD83/NAVD88  
 496,342.92 mE +/- 0.02 m 4,951,499.44 mN +/- 0.02 m  
 Elevation (ft.): 918.3 +/- 0.1 ft.  
 Ground Water Depth (ft.): 77.0  
 Ground Water Elevation (ft.): 841.3  
 Site: Snow covered corn stubble field at natural grade.

Drilling Method: 4x6 Rotasonic Started: 3/5/08 2:40 PM  
 Drilling Contractor: Traut Wells Completed: 3/5/08 4:45 PM  
 Drill Rig: Versasonic Logged By: J.D. Lehr

DRILLING & SAMPLING					TEST RESULTS (%)					Geologic Interpretation	Economic Classification
Graphic Log	Depth (ft.)	Gravel Per Drill Action	Sample Runs	Sampled Intervals	Total + #4 Sieve	+ 1.5 Inch	1.5 Inch to 3/4 Inch	3/4 Inch to #4 Sieve	Sample Wt. (lbs)		

80.0	<b>SAND.</b> Fine to medium sand. Very minor trace gravel to 1-1/4 inches.	838.3									
84.0	<b>SAND.</b> Fine to very coarse sand. Minor gravel to 1 inch.	834.3									
86.0	<b>SAND.</b> Very fine sand. No gravel.	832.3									
88.0	<b>SAND.</b> Fine to coarse sand. Very minor gravel to 2 inches.	830.3									
90.0	<b>WEATHERED LIMESTONE.</b>	828.3									



No samples taken. Estimated less than 10 percent gravel from 8 to 60 feet.

T.D.  
90 ft.

Prairie du Chein

# DRILLING LOG

## HOLE NO. CCC1700

Page 1 of 1

Property: UMore Park Property

Location: City of Rosemount & Empire Township, Dakota County, Minnesota

UTM Zone 15/NAD83/NAVD88

496,345.17 mE +/- 0.02 m 4,951,699.47 mN +/- 0.02 m

Elevation (ft.): 923.8 +/- 0.1 ft.

Ground Water Depth (ft.): Ground water not encountered

Ground Water Elevation (ft.):

Site: Snow covered field at natural grade.

Drilling Method: 9-inch flight auger

Started: 2/20/08 10:00 AM

Drilling Contractor: Braun Intertec

Completed: 2/20/08 11:30 AM

Drill Rig: CME-750

Logged By: J.D. Lehr

		DRILLING & SAMPLING					TEST RESULTS (%)				Geologic Interpretation	Economic Classification
Graphic Log	Depth (ft.)	Gravel Per Drill Action	Sample Runs	Sampled Intervals	Total + #4 Sieve	+ 1.5 Inch	1.5 Inch to 3/4 Inch	3/4 Inch to #4 Sieve	Sample Wt. (lbs)			
1.0	TOPSOIL. Silty, black.										Loess	
3.0	SILT. Brown.											
5.0	SAND. Fine to coarse sand. Very minor gravel to 1-1/2 inches.					15.4	1.3	3.4	10.7	44.3	Superior lobe outwash	17.9% + #4
10.0	SAND. Fine to medium sand. Minor gravel to 2 inches.					27.0	1.1	6.5	19.4	37.9		
15.0	SAND & GRAVEL. Fine to coarse sand. Gravel to 2 inches.					20.4	0.0	2.9	17.5	31.6		
20.0	SAND. Fine to very coarse sand. Minor gravel to 1 inch.					16.0	1.4	4.8	9.8	24.2		
25.0	SAND. Fine to coarse sand. Minor gravel to 1-1/2 inches.					12.0	3.8	3.6	4.5	30.6		
30.0	SAND. Fine to medium sand. Very minor gravel to 1-3/4 inches.										Superior lobe outwash	
35.0	SAND. Fine to medium sand. Very minor gravel to 3/4 inch.											
40.0	SAND. Fine to coarse sand. Very minor gravel to 3/4 inch.											
45.0	SAND. Fine to medium sand. Very minor trace gravel to 3/4 inch.											
55.0	SAND. Fine to very coarse sand. Very minor gravel to 1-1/4 inches.											
65.0	T.D. 65 ft.											

LOG A GNNIN08 UMORE PARK DRILLING LOGS.GPJ LOG A GNNIN08.GDT Printed 5/30/08

# DRILLING LOG

## HOLE NO. CCC1900

Page 1 of 1

Property: UMore Park Property

Location: City of Rosemount & Empire Township, Dakota County, Minnesota

UTM Zone 15/NAD83/NAVD88

496,343.55 mE +/- 0.02 m 4,951,900.21 mN +/- 0.02 m

Elevation (ft.): 920.0 +/- 0.1 ft.

Ground Water Depth (ft.): Ground water not encountered

Ground Water Elevation (ft.):

Site: Snow covered field at natural grade.

Drilling Method: 9-inch flight auger

Started: 2/20/08 12:00 PM

Drilling Contractor: Braun Intertec

Completed: 2/20/08 1:30 PM

Drill Rig: CME-750

Logged By: J.D. Lehr

### DRILLING & SAMPLING

### TEST RESULTS (%)

Geologic Interpretation  
Economic Classification

Graphic Log	Depth (ft.)	Gravel Per Drill Action	Sample Runs	Sampled Intervals	Total + #4 Sieve	+ 1.5 Inch	1.5 Inch to 3/4 Inch	3/4 Inch to #4 Sieve	Sample Wt. (lbs)	Geologic Interpretation	Economic Classification
2.0 <b>TOPSOIL.</b> Silty, black.	918.0									Loess	
4.0 <b>SILT.</b> Brown.	916.0										
5.0 <b>SAND.</b> Fine to medium sand. Very minor trace gravel to 1/2 inch.	915.0				8.2	0.0	1.9	6.3	33.6	Superior lobe outwash	20.6 % + #4
10.0 <b>SAND.</b> Fine to coarse sand. Very minor gravel to 1 inch.	910.0				20.7	1.2	4.3	15.2	35.0		
15.0 <b>SAND.</b> Fine to coarse sand. Minor gravel to 1-3/4 inches.	905.0				22.2	0.7	3.6	17.9	29.9		
20.0 <b>SAND.</b> Fine to very coarse sand. Minor gravel to 1 inch.	900.0				22.7	0.0	5.7	17.0	35.3		
25.0 <b>SAND.</b> Fine to very coarse sand. Minor gravel to 1-3/4 inches.	895.0				20.9	1.1	6.9	12.9	27.1		
30.0 <b>SAND.</b> Fine to coarse sand. Minor gravel to 1-1/4 inches.	890.0				22.8	1.0	4.9	16.9	32.7		
35.0 <b>SAND.</b> Fine to coarse sand. Minor gravel to 1-3/4 inches.	885.0				20.8	5.3	6.3	9.2	32.2		
40.0 <b>SAND.</b> Fine to coarse sand. Minor gravel to 3-1/4 inches.	880.0				26.7	7.9	6.1	12.7	32.8		
45.0 <b>SAND &amp; GRAVEL.</b> Fine to very coarse sand. Gravel to 2-3/4 inches.	875.0				22.9	3.7	6.2	13.0	46.6		
50.0 <b>SAND.</b> Fine to medium sand, dirty. Minor gravel to 2-1/2 inches.	870.0										
55.0 <b>SAND.</b> Fine to medium sand, very dirty. Minor gravel to 1-1/2 inches. Very rocky (drill action) from 52 to 54.5 feet. Gradational with below.	865.0										
58.0 <b>TILL.</b> Sandy, silty, rocky, brown & reddish brown mixed. Refusal in cobbles & boulders at 58 feet.	862.0									Till	
	T.D. 58 ft.										

LOG A GNNIN08 UMORE PARK DRILLING LOGS.GPJ LOG A GNNIN08.GDT Printed 5/30/08

# DRILLING LOG

## HOLE NO. CCC2100

Page 1 of 1

Property: UMore Park Property

Location: City of Rosemount & Empire Township, Dakota County Minnesota

UTM Zone 15/NAD83/NAVD88

496,342.71 mE +/- 0.02 m 4,952,100.09 mN +/- 0.02 m

Elevation (ft.): 918.1 +/- 0.1 ft.

Ground Water Depth (ft.): Ground water not encountered

Ground Water Elevation (ft.):

Site: Snow covered field at natural grade.

Drilling Method: 9-inch flight auger

Started: 2/13/08 2:15 PM

Drilling Contractor: Braun Intertec

Completed: 2/13/08 3:45 PM

Drill Rig: CME-750

Logged By: J.D. Lehr

		DRILLING & SAMPLING					TEST RESULTS (%)					Geologic Interpretation	Economic Classification
Graphic Log	Depth (ft.)	Gravel Per Drill Action	Sample Runs	Sampled Intervals	Total + #4 Sieve	+ 1.5 Inch	1.5 Inch to 3/4 Inch	3/4 Inch to #4 Sieve	Sample Wt. (lbs)				
1.0	TOPSOIL. Silty, dark brown.										Loess		
2.0	SILT. Brown.										Superior lobe outwash	28.9 % + #4	
5.0	SAND. Fine sand, dirty. Very minor gravel to 3/4 inch.				14.6	1.3	5.0	8.3	36.2				
10.0	SAND. Fine to coarse sand. Very minor gravel to 1-1/2 inches.				17.2	2.4	3.8	11.0	29.2				
15.0	SAND. Fine to very coarse sand. Minor gravel to 1-1/2 inches.				23.0	5.6	5.3	12.1	34.9				
20.0	SAND. Fine to very coarse sand. Minor gravel to 3 inches.				21.3	0.9	5.1	15.3	27.6				
25.0	SAND & GRAVEL. Fine to very coarse sand. Gravel to 1-1/2 inches.				34.5	1.3	4.0	29.2	36.0				
30.0	SAND & GRAVEL. Fine to very coarse sand. Gravel to 3-1/2 inches.				33.3	7.1	4.9	21.2	37.0				
35.0	SAND. Fine to coarse sand. Minor gravel to 1-3/4 inches.				23.4	2.5	2.6	18.4	24.2				
40.0	SAND & GRAVEL. Fine to very coarse sand. Gravel to 1 inch.				26.3	0.0	3.2	23.1	27.9				
45.0	GRAVEL & SAND. Fine to very coarse sand, slightly dirty & iron stained. Gravel to 2 inches.				41.0	1.5	6.1	33.4	28.7	Older outwash			
50.0	SAND & GRAVEL. Fine to very coarse sand, dirty & iron stained. Gravel to 2 inches.				33.6	3.8	6.2	23.6	30.6				
60.0	GRAVEL & SAND. Fine to very coarse sand, dirty & iron stained. Gravel to 2 inches.				37.5	2.4	7.0	28.0	37.4				
65.0	GRAVEL & SAND. Fine to very coarse sand, dirty & iron stained. Gravel to 2 inches.				41.5	8.2	7.7	25.6	31.9				
	T.D. 65 ft.												

LOG A GNNIN08 UMORE PARK DRILLING LOGS.GPJ LOG A GNNIN08.GDT Printed: 5/30/08

# DRILLING LOG

## HOLE NO. CCC2200

Page 1 of 2

Property: UMore Park Property

Location: City of Rosemount & Empire Township, Dakota County, Minnesota

UTM Zone 15/NAD83/NAVD88  
 496,347.64 mE +/- 0.02 m 4,952,200.76 mN +/- 0.02 m  
 Elevation (ft.): 919.1 +/- 0.1 ft.  
 Ground Water Depth (ft.): 65.0  
 Ground Water Elevation (ft.): 854.1  
 Site: Snow covered corn stubble field at natural grade.

Drilling Method: 4x6 Rotasonic Started: 3/6/08 3:45 PM  
 Drilling Contractor: Traut Wells Completed: 3/6/08 5:10 PM  
 Drill Rig: Versasonic Logged By: J.D. Lehr

DRILLING & SAMPLING					TEST RESULTS (%)					Geologic Interpretation	Economic Classification
Graphic Log	Depth (ft.)	Gravel Per Drill Action	Sample Runs	Sampled Intervals	Total + #4 Sieve	+ 1.5 Inch	1.5 Inch to 3/4 Inch	3/4 Inch to #4 Sieve	Sample Wt. (lbs)		

1.0	918.1										Loess		
3.0	916.1												
<b>SAND.</b> Fine to medium sand. Very minor gravel to 1-1/4 inches.													
15.0	904.1				8.1	0.6	2.5	5.0	30.0		Superior lobe outwash	23.3% + #4	
<b>SAND.</b> Fine to coarse sand. Minor gravel to 2-1/2 inches.													
20.0	899.1				21.5	8.5	3.5	9.5	30.5				
<b>SAND.</b> Fine to coarse sand. Minor gravel to 1-3/4 inches.													
30.0	889.1				17.8	2.1	4.9	10.8	36.8				
<b>SAND &amp; GRAVEL.</b> Fine to very coarse sand. Gravel to 2-1/2 inches.													
40.0	879.1				26.6	6.6	6.9	13.2	41.7				
<b>SAND &amp; GRAVEL.</b> Fine to very coarse sand, slightly dirty. Gravel to 2-1/2 inches.													
50.0	869.1				36.1	5.2	6.6	24.2	41.8				
<b>SAND &amp; GRAVEL.</b> Fine to very coarse sand, slightly iron stained from 50 to 52 feet. Gravel to 1-1/2 inches.													
60.0	859.1				32.0	0.0	6.3	25.7	41.1				
<b>SILT.</b> Sandy in places, brown. Poor recovery from 60 to 80 feet - only 3.5 feet. Driller said drilling got "real hard" at 74 feet.													
											Lacustrine sediment		

Continued Next Page

LOG A GNNIN08 UMORE PARK DRILLING LOGS.GPJ LOG A GNNIN08.GDT Printed 5/30/08

# DRILLING LOG

## HOLE NO. CCC2200

Page 2 of 2

Property: UMore Park Property

Location: City of Rosemount & Empire Township, Dakota County, Minnesota

UTM Zone 15/NAD83/NAVD88  
 496,347.64 mE +/- 0.02 m 4,952,200.76 mN +/- 0.02 m  
 Elevation (ft.): 919.1 +/- 0.1 ft.  
 Ground Water Depth (ft.): 65.0  
 Ground Water Elevation (ft.): 854.1  
 Site: Snow covered corn stubble field at natural grade.

Drilling Method: 4x6 Rotasonic Started: 3/6/08 3:45 PM  
 Drilling Contractor: Traut Wells Completed: 3/6/08 5:10 PM  
 Drill Rig: Versasonic Logged By: J.D. Lehr

DRILLING & SAMPLING					TEST RESULTS (%)					Geologic Interpretation	Economic Classification
Graphic Log	Depth (ft.)	Gravel Per Drill Action	Sample Runs	Sampled Intervals	Total + #4 Sieve	+ 1.5 Inch	1.5 Inch to 3/4 Inch	3/4 Inch to #4 Sieve	Sample Wt. (lbs)		

80.0 839.1

	80											
T.D. 80 ft.  Ground water level approximate.												



# DRILLING LOG

## HOLE NO. CCC2300

Page 1 of 1

Property: UMore Park Property

Location: City of Rosemount & Empire Township, Dakota County, Minnesota

UTM Zone 15/NAD83/NAVD88

496,344.53 mE +/- 0.02 m 4,952,300.51 mN +/- 0.02 m

Elevation (ft.): 924.6 +/- 0.1 ft.

Ground Water Depth (ft.): Ground water not encountered

Ground Water Elevation (ft.):

Site: Snow covered field at natural grade.

Drilling Method: 9-inch flight auger

Started: 2/13/08 12:40 PM

Drilling Contractor: Braun Intertec

Completed: 2/13/08 2:10 PM

Drill Rig: CME-750

Logged By: J.D. Lehr

Depth (ft.)	Graphic Log	Gravel Per Drill Action	Sample Runs	Sampled Intervals	TEST RESULTS (%)					Geologic Interpretation	Economic Classification
					Total + #4 Sieve	+ 1.5 Inch	1.5 Inch to 3/4 Inch	3/4 Inch to #4 Sieve	Sample Wt. (lbs)		
1.0	TOPSOIL. Silty, sandy, dark brown.									Loess	
4.5	SAND. Very fine sand, dirty. No gravel.										
5.0	SAND. Fine to medium sand, slightly dirty. Very minor gravel to 1/2 inch.									Superior lobe outwash	12.6 % + #4
10.0	SAND. Fine to coarse sand. Very minor gravel to 1-1/4 inches.										
15.0	SAND. Fine to medium sand. Very minor gravel to 3/4 inch.				3.5	0.0	0.5	3.0	24.0		
20.0	SAND. Fine sand. No gravel.										
25.0	SAND. Fine to medium sand. Very minor gravel to 3/4 inch.										
30.0	SAND. Fine to coarse sand. Very minor gravel to 1-1/2 inches.				9.2	1.0	3.0	5.2	27.5		
35.0	SAND. Fine to medium sand. Very minor gravel to 2 inches.				13.0	2.7	4.1	6.2	27.9		
40.0	SAND. Fine to coarse sand. Very minor gravel to 1 inch.				11.6	0.0	4.4	7.3	23.2		
45.0	SAND. Fine to coarse sand. Minor gravel to 1-3/4 inches.				24.8	2.0	6.4	16.5	17.6		
50.0	SAND & GRAVEL. Fine to very coarse sand. Gravel to 3 inches.				17.4	1.4	4.0	12.0	26.6		
55.0	SAND. Fine to very coarse sand. Minor gravel to 2 inches.				26.6	4.2	3.2	19.2	21.6		
60.0	SAND. Fine to coarse sand. Very minor gravel to 1-1/4 inches.				21.8	3.9	1.9	16.0	23.6		
65.0	SAND. Fine to coarse sand. Very minor gravel to 1-1/4 inches.										
	T.D. 65 ft.										

LOG A GNNIN08 UMORE PARK DRILLING LOGS.GPJ LOG A GNNIN08.GDT Printed 5/30/08

# DRILLING LOG

## HOLE NO. CCC2500

Page 1 of 1

Property: UMore Park Property

Location: City of Rosemount & Empire Township, Dakota County, Minnesota

UTM Zone 15/NAD83/NAVD88

496,345.67 mE +/- 0.02 m 4,952,498.84 mN +/- 0.02 m

Elevation (ft.): 927.5 +/- 0.1 ft.

Ground Water Depth (ft.): Ground water not encountered

Ground Water Elevation (ft.):

Site: Snow covered field at natural grade.

Drilling Method: 9-inch flight auger

Started: 2/13/08 10:35 AM

Drilling Contractor: Braun Intertec

Completed: 2/13/08 11:55 AM

Drill Rig: CME-750

Logged By: J.D. Lehr

		DRILLING & SAMPLING				TEST RESULTS (%)				Geologic Interpretation	Economic Classification
Graphic Log	Depth (ft.)	Gravel Per Drill Action	Sample Runs	Sampled Intervals	Total + #4 Sieve	+ 1.5 Inch	1.5 Inch to 3/4 Inch	3/4 Inch to #4 Sieve	Sample Wt. (lbs)		
1.5 <b>TOPSOIL.</b> Silty, black.	926.0									Loess	
3.5 <b>SILT.</b> Sandy towards bottom of interval, brown.	924.0										
5.0 <b>SAND.</b> Fine sand. Very minor trace gravel to 1 inch.	922.5									Superior lobe outwash	16.3 % + #4
<b>SAND.</b> Fine sand. No gravel.											
20.0	907.5				1.3	0.0	0.2	1.2	23.4		
<b>SAND.</b> Fine to medium sand. Very minor trace gravel to 1/2 inch.	902.5										
<b>GRAVEL &amp; SAND.</b> Fine to very coarse sand. Gravel to 1-1/4 inches.	897.5				42.1	1.0	6.3	34.8	42.0		
<b>SAND &amp; GRAVEL.</b> Fine to very coarse sand. Gravel to 2 inches.	892.5				38.2	6.7	6.9	24.6	28.7		
<b>SAND &amp; GRAVEL.</b> Fine to coarse sand. Gravel to 1 inch.	887.5				29.1	0.0	4.9	24.2	26.5		
<b>SAND.</b> Fine to medium sand. Very minor trace gravel to 1/2 inch.	882.5				2.1	0.0	0.0	2.1	18.1		
<b>SAND &amp; GRAVEL.</b> Fine to coarse sand. Gravel to 3 inches.	877.5				27.0	7.6	6.6	12.7	33.5		
<b>SAND.</b> Fine to coarse sand. Very minor gravel to 1-1/2 inches.	872.5				13.0	0.0	3.3	9.7	21.0		
<b>SAND.</b> Fine to coarse sand. Minor gravel to 1-1/4 inches.	867.5				22.3	2.8	5.8	13.6	22.6		
<b>SAND.</b> Fine to very coarse sand. Minor gravel to 2 inches.	862.5				21.5	2.1	3.9	15.5	24.1		
	T.D. 65 ft.										

LOG A GNNIN08 UMORE PARK DRILLING LOGS.GPJ LOG A GNNIN08.GDT Printed 5/30/08

# DRILLING LOG

## HOLE NO. CCC2600

Page 1 of 2

Property: UMore Park Property

Location: City of Rosemount & Empire Township, Dakota County, Minnesota

UTM Zone 15/NAD83/NAVD88  
 496,326.05 mE +/- 0.02 m 4,952,596.79 mN +/- 0.02 m  
 Elevation (ft.): 926.5 +/- 0.1 ft.  
 Ground Water Depth (ft.): 77.0  
 Ground Water Elevation (ft.): 849.5  
 Site: Snow covered corn stubble field at natural grade.

Drilling Method: 4x6 Rotasonic Started: 3/6/08 11:30 AM  
 Drilling Contractor: Traut Wells Completed: 3/6/08 2:40 PM  
 Drill Rig: Versasonic Logged By: J.D. Lehr

DRILLING & SAMPLING					TEST RESULTS (%)					Geologic Interpretation	Economic Classification
Graphic Log	Depth (ft.)	Gravel Per Drill Action	Sample Runs	Sampled Intervals	Total + #4 Sieve	+ 1.5 Inch	1.5 Inch to 3/4 Inch	3/4 Inch to #4 Sieve	Sample Wt. (lbs)		

2.0	<b>TOPSOIL.</b> Silty, black.	924.5									Loess
5.0	<b>SILT.</b> Brown.	921.5									
15.0	<b>SAND.</b> Fine to medium sand. Very minor gravel to 1-3/4 inches.	911.5			8.3	1.2	1.0	6.1	42.8		Superior lobe outwash  <b>14.2 % + #4</b>
40.0	<b>SAND.</b> Fine sand. Very minor gravel to 1 inch. Poor recovery from 20 to 40 feet - only 7.5 feet.	886.5			6.2	0.0	1.6	4.6	26.2		
45.0	<b>SAND &amp; GRAVEL.</b> Medium to very coarse sand. Gravel to 2 inches.	881.5			25.4	2.7	3.7	19.1	27.5		
56.0	<b>SAND.</b> Fine sand. No gravel.	870.5			8.2	2.0	2.0	4.2	32.4		
60.0	<b>SAND.</b> Fine to medium sand. Very minor gravel to 2-1/4 inches.	866.5									
70.0	<b>SAND.</b> Fine to coarse sand, slightly dirty. Minor gravel to 2 inches.	856.5			22.3	3.8	4.4	14.1	28.5		
	<b>SAND &amp; GRAVEL.</b> Fine to very coarse sand, slightly dirty. Gravel to 1-3/4 inches.										

Continued Next Page

LOG A GNNIN08 UMORE PARK DRILLING LOGS.GPJ LOG A GNNIN08.GDT Printed 5/30/08

# DRILLING LOG

## HOLE NO. CCC2600


Page 2 of 2

Property: UMore Park Property

Location: City of Rosemount & Empire Township, Dakota County, Minnesota

UTM Zone 15/NAD83/NAVD88  
 496,326.05 mE +/- 0.02 m 4,952,596.79 mN +/- 0.02 m  
 Elevation (ft.): 926.5 +/- 0.1 ft.  
 Ground Water Depth (ft.): 77.0  
 Ground Water Elevation (ft.): 849.5  
 Site: Snow covered corn stubble field at natural grade.

Drilling Method: 4x6 Rotasonic Started: 3/6/08 11:30 AM  
 Drilling Contractor: Traut Wells Completed: 3/6/08 2:40 PM  
 Drill Rig: Versasonic Logged By: J.D. Lehr

DRILLING & SAMPLING					TEST RESULTS (%)					Geologic Interpretation	Economic Classification
Graphic Log	Depth (ft.)	Gravel Per Drill Action	Sample Runs	Sampled Intervals	Total + #4 Sieve	+ 1.5 Inch	1.5 Inch to 3/4 Inch	3/4 Inch to #4 Sieve	Sample Wt. (lbs)		
	80.0			▲	25.2	1.5	5.2	18.5	40.6	Prairie du Chein	
	85.0			▲	18.8	1.6	3.6	13.6	43.8		
	90.0			▲	24.1	6.6	4.6	12.9	44.2		
	93.5			▲	19.9	0.0	4.0	15.9	36.0		

**SAND & GRAVEL.** Fine to very coarse sand, slightly dirty. Gravel to 1-3/4 inches. ▼  
 80.0 (continued) 846.5

**SAND.** Fine to coarse sand. Minor gravel to 1-3/4 inches.  
 85.0 841.5

**SAND.** Fine to very coarse sand. Minor gravel to 4 inches.  
 90.0 836.5

**SAND.** Fine to very coarse sand. Minor gravel to 1-1/4 inches.  
 93.5 833.0

94.0 **LIMESTONE.** Weathered in upper 2 inches. Refusal at 94 feet. 832.5

T.D.  
94 ft.

Prairie du Chein

# DRILLING LOG

## HOLE NO. CCC2700

Page 1 of 1

Property: UMore Park Property

Location: City of Rosemount & Empire Township, Dakota County, Minnesota

UTM Zone 15/NAD83/NAVD88

496,299.85 mE +/- 0.02 m 4,952,699.99 mN +/- 0.02 m

Elevation (ft.): 927.8 +/- 0.1 ft.

Ground Water Depth (ft.): Ground water not encountered

Ground Water Elevation (ft.):

Site: Snow covered field at natural grade.

Drilling Method: 9-inch flight auger

Started: 2/13/08 9:10 AM

Drilling Contractor: Braun Intertec

Completed: 2/13/08 10:30 AM

Drill Rig: CME-750

Logged By: J.D. Lehr

Depth (ft.)	Graphic Log	Gravel Per Drill Action	Sample Runs	Sampled Intervals	TEST RESULTS (%)					Geologic Interpretation	Economic Classification	
					Total + #4 Sieve	+ 1.5 Inch	1.5 Inch to 3/4 Inch	3/4 Inch to #4 Sieve	Sample Wt. (lbs)			
1.5	TOPSOIL. Silty, black.										Loess	
3.0	SILT. Brown.											
5.0	SAND. Fine sand, slightly iron stained. Very minor gravel to 1 inch.										Superior lobe outwash	16.5 % + #4
	SAND. Fine to medium sand. No gravel.				2.8	0.0	0.6	2.2	29.4			
15.0	SAND. Fine to coarse sand. Very minor gravel to 1 inch.											
20.0	SAND. Fine to medium sand. Very minor trace gravel to 3/4 inch.				6.0	0.0	1.1	5.0	27.7			
25.0	SAND & GRAVEL. Fine to very coarse sand. Gravel to 1-1/2 inches.				38.1	0.7	9.6	27.9	39.2			
30.0	SAND & GRAVEL. Fine to very coarse sand. Gravel to 1 inch.				35.1	0.0	9.2	25.9	28.4			
35.0	SAND. Fine to coarse sand. Minor gravel to 2-1/2 inches.				24.8	2.5	7.7	14.6	22.8			
40.0	SAND. Fine to coarse sand. Very minor gravel to 1-1/2 inches.				11.2	2.4	2.8	6.1	23.1			
45.0	SAND. Fine to very coarse sand. Minor gravel to 1-1/4 inches. Small sample volume.				22.0	0.0	6.0	16.0	37.5			
55.0	SAND. Fine to coarse sand. Very minor gravel to 1 inch.											
60.0	SAND. Fine to coarse sand. Very minor gravel to 3/4 inch.											
65.0	T.D. 65 ft.											

LOG A GNNIN08 UMORE PARK DRILLING LOGS.GPJ LOG A GNNIN08.GDT Printed 5/30/08

# DRILLING LOG

## HOLE NO. CCC2900

Page 1 of 1

Property: UMore Park Property

Location: City of Rosemount & Empire Township, Dakota County, Minnesota

UTM Zone 15/NAD83/NAVD88

496,299.34 mE +/- 0.02 m 4,952,899.53 mN +/- 0.02 m

Elevation (ft.): 922.1 +/- 0.1 ft.

Ground Water Depth (ft.): Ground water not encountered

Ground Water Elevation (ft.):

Site: Snow covered field at natural grade.

Drilling Method: 9-inch flight auger

Started: 2/13/08 7:45 AM

Drilling Contractor: Braun Intertec

Completed: 2/13/08 9:05 AM

Drill Rig: CME-750

Logged By: J.D. Lehr

### DRILLING & SAMPLING

### TEST RESULTS (%)

Geologic Interpretation

Economic Classification

Graphic Log	Depth (ft.)	Gravel Per Drill Action	Sample Runs	Sampled Intervals	Total + #4 Sieve	+ 1.5 Inch	1.5 Inch to 3/4 Inch	3/4 Inch to #4 Sieve	Sample Wt. (lbs)	Geologic Interpretation	Economic Classification
1.5 <b>TOPSOIL.</b> Silty, black.	920.6										
<b>SILT.</b> Brown. Lower contact based on drill action.	7.0									Loess	
10.0 <b>SAND &amp; GRAVEL.</b> Fine to medium sand, slightly dirty. Gravel to 1-1/2 inches.	912.1				35.9	0.7	15.3	19.9	31.4	Superior lobe outwash	23.3 % + #4
15.0 <b>SAND &amp; GRAVEL.</b> Fine to very coarse sand. Gravel to 1-1/2 inches.	907.1				29.8	0.9	6.4	22.6	28.7		
20.0 <b>SAND.</b> Fine to coarse sand. Very minor gravel to 1 inch.	902.1				10.6	0.0	2.1	8.5	21.7		
25.0 <b>SAND &amp; GRAVEL.</b> Fine to coarse sand. Gravel to 2 inches.	897.1				25.0	6.9	6.8	11.3	23.2		
30.0 <b>SAND.</b> Medium to very coarse sand. Minor gravel to 2-1/4 inches.	892.1				24.4	6.1	2.7	15.6	38.4		
35.0 <b>SAND &amp; GRAVEL.</b> Medium to very coarse sand. Gravel to 2-1/4 inches.					25.2	5.7	3.3	16.2	37.3		
40.0 <b>SAND.</b> Medium to very coarse sand. Minor gravel to 2-1/4 inches.	882.1				26.4	6.0	3.3	17.0	33.1		
45.0 <b>SAND.</b> Medium to very coarse sand. Minor gravel to 2-1/4 inches.	877.1				24.6	3.7	3.4	17.4	28.0		
50.0 <b>SAND.</b> Fine to very coarse sand. Minor gravel to 1 inch.					18.9	0.0	4.0	14.9	26.4		
55.0 <b>SAND &amp; GRAVEL.</b> Fine to very coarse sand. Gravel to 1-1/2 inches.	867.1				16.5	0.0	2.7	13.8	22.8		
60.0 <b>SAND &amp; GRAVEL.</b> Fine to very coarse sand. Gravel to 1-1/2 inches.	862.1				23.7	1.4	2.3	20.0	28.3		
64.0 <b>SAND.</b> Fine sand. No gravel.	858.1										
64.5 <b>SAND &amp; GRAVEL.</b> Fine sand, dirty. Gravel to 1 inch.	857.6										
65.0 <b>TILL.</b> Clayey, yellowish brown.	857.1									Till	
	T.D. 65 ft.										

LOG A GNNIN08 UMORE PARK DRILLING LOGS.GPJ LOG A GNNIN08.GDT Printed 5/30/08

# DRILLING LOG

## HOLE NO. CCC3100

Page 1 of 1

Property: UMore Park Property

Location: City of Rosemount & Empire Township, Dakota County, Minnesota

UTM Zone 15/NAD83/NAVD88

496,301.64 mE +/- 0.02 m 4,953,101.28 mN +/- 0.02 m

Elevation (ft.): 924.7 +/- 0.1 ft.

Ground Water Depth (ft.): Ground water not encountered

Ground Water Elevation (ft.):

Site: Snow covered field at natural grade.

Drilling Method: 9-inch flight auger

Started: 2/12/08 4:15 PM

Drilling Contractor: Braun Intertec

Completed: 2/12/08 5:25 PM

Drill Rig: CME-750

Logged By: J.D. Lehr

		DRILLING & SAMPLING					TEST RESULTS (%)					Geologic Interpretation	Economic Classification
Graphic Log	Depth (ft.)	Gravel Per Drill Action	Sample Runs	Sampled Intervals	Total + #4 Sieve	+ 1.5 Inch	1.5 Inch to 3/4 Inch	3/4 Inch to #4 Sieve	Sample Wt. (lbs)				
1.0	TOPSOIL. Silty, dark brown.	923.7										Loess	
2.0	SILT. Brown.	922.7										Superior lobe outwash	24.4 % + #4
5.0	SAND. Fine to medium sand. Very minor gravel to 1 inch.	919.7				19.3	4.2	4.9	10.2	34.1			
10.0	SAND. Fine to coarse sand. Minor gravel to 1-3/4 inches.	914.7				37.0	2.5	10.1	24.5	38.0			
15.0	SAND & GRAVEL. Fine to coarse sand. Gravel to 1-1/4 inches.	909.7				35.9	5.9	7.1	22.9	37.8			
20.0	SAND & GRAVEL. Fine to very coarse sand. Gravel to 2 inches.	904.7				19.5	0.0	7.2	12.3	28.6			
25.0	SAND. Medium to very coarse sand. Minor gravel to 1-1/4 inches.	899.7				26.2	2.9	5.7	17.5	32.2			
30.0	SAND & GRAVEL. Fine to coarse sand. Gravel to 2 inches.	894.7				18.9	0.0	1.5	17.4	23.9			
35.0	SAND. Fine to coarse sand. Minor gravel to 1 inch.	889.7				19.5	0.8	3.5	15.2	26.0			
40.0	SAND. Fine to coarse sand. Minor gravel to 1-1/2 inches.	884.7				22.3	5.3	3.9	13.0	26.9			
45.0	SAND. Fine to very coarse sand. Minor gravel to 2 inches.	879.7											
55.0	SAND. Fine to coarse sand. Very minor trace gravel to 1/2 inch.	869.7											
60.0	SAND. Fine to coarse sand. Very minor gravel to 1-1/4 inches.	864.7											
65.0	SAND. Fine to medium sand. Very minor gravel to 1-1/4 inches. Lens of dirty very fine sand near bottom of interval. Red till balls present.	859.7											
	T.D. 65 ft.												

LOG A GNNIN08 UMORE PARK DRILLING LOGS.GPJ LOG A GNNIN08.GDT Printed 5/30/08