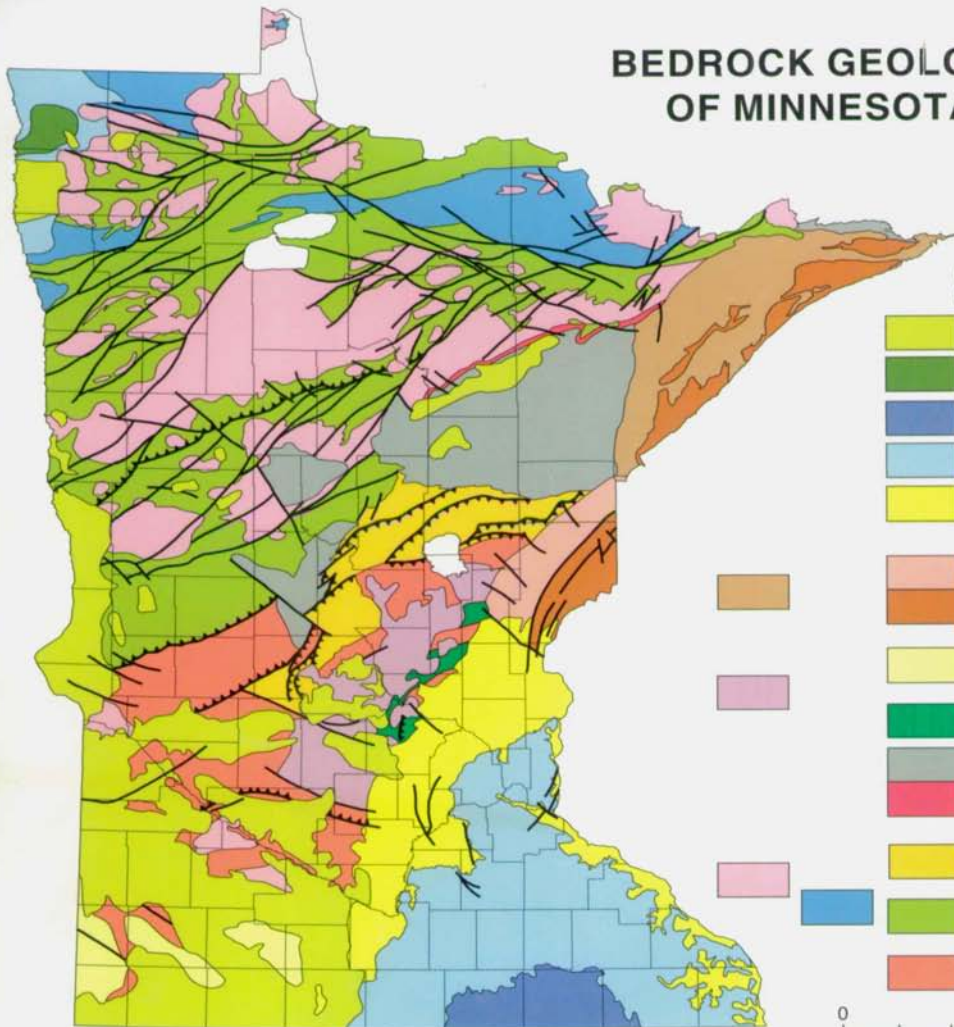
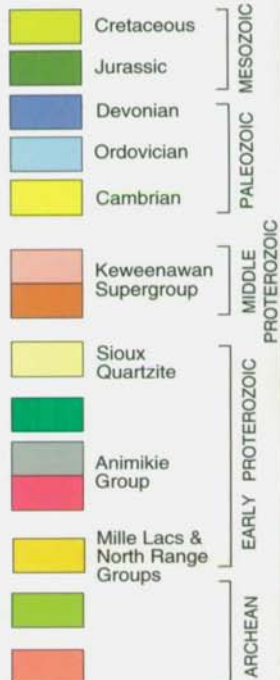


BEDROCK GEOLOGY OF MINNESOTA



CORRELATION OF MAP UNITS



DESCRIPTION OF MAP UNITS





UNIVERSITY OF MINNESOTA

MINNESOTA GEOLOGICAL SURVEY

2642 University Avenue

St. Paul, Minnesota 55114-1057 U.S.A.

(612) 627-4780

FIRST CLASS
LETTER RATE
POSTAGE
REQUIRED

This simplified geologic map shows the general distribution of rock types underlying Minnesota's landscape. Some of the rocks are 3.6 billion years old—the oldest found so far in the United States. The map is modified from Morey, G.B., compiler, 1996, Geologic map of Minnesota, bedrock geology: MGS State Map Series S-20, scale 1:1,000,000. Digital compilation by R.G. Tipping and B.A. Lusardi.

In 1997, the Minnesota Geological Survey celebrates its 125th year of research, teaching, and public service in the earth sciences. The Survey is a unit of the Newton Horace Winchell School of Earth Sciences in the Institute of Technology at the University of Minnesota.

The University of Minnesota is an equal opportunity educator and employer.

© Copyright 1996 by the Regents of the University of Minnesota.