

*News from the*  
**GOLDSTEIN** WINTER 2008



Dragon Robe, c. 19<sup>th</sup> century, China, embroidery on silk, Gift of Mrs. Albert Moonman

*EXPRESSIONS OF STABILITY  
AND CHANGE:*

*ETHNIC DRESS AND FOLK COSTUME*

*February 7–June 14, 2009*

GOLDSTEIN MUSEUM GALLERY, MCNEAL HALL

THE GOLDSTEIN MUSEUM OF DESIGN

### *EXPRESSIONS OF STABILITY AND CHANGE: ETHNIC DRESS AND FOLK COSTUME*

February 7–June 14, 2009, opening reception February 6, 2009

GOLDSTEIN MUSEUM GALLERY, 241 MCNEAL HALL

Curators: Jean McElvain, assistant curator; Kathleen Campbell, Goldstein grant writer

*Expressions of Stability and Change: Ethnic Dress and Folk Costume*, will be an exuberant celebration of cultural heritage that features gloriously-colored and textured clothing of ethnic groups from around the world. The exhibition will reveal that ethnic dress, which may range from a single piece of clothing to a whole ensemble of items, serves to identify the wearer as a member of a particular ethnic group and is a powerful symbol of belonging and solidarity.

The exhibition may unseat some preconceptions about ethnic dress. For example, ethnic dress is sometimes assumed to be unchanging. While it has historically changed more slowly than dress created by the European-American fashion system, ethnic dress has always been in a state of flux. European folk costume of Norway, Poland, and Croatia has evolved from mostly hand-made to mostly machine-made, and is now worn only for festivals, weddings, and other special occasions. But in Nigeria, Guatemala, Bhutan, Palestine, India and Pakistan, ethnic dress often still includes hand-woven, hand-printed, or hand-dyed textiles and is still worn every day, although not equally by all age groups or both sexes.

The exhibition's expansive theme provides special opportunities for collaboration on programs and special events. Please watch the Goldstein website for information on exhibition-related programs.



*Folk dress ensemble, c. 20<sup>th</sup> century,  
Sweden, embroidery on wool  
Gift of the International Institute of Minnesota*

<http://goldstein.design.umn.edu>



## DIRECTOR'S MESSAGE

Lin Nelson-Mayson

PHOTOGRAPHY BY JUDY OLAUSEN

What is the GMD experience?

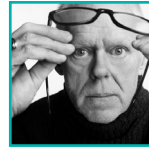
For over thirty years, the Goldstein Museum of Design has added value to the academic experience and to designers in the community. Seeing objects designed by giants of design history and by anonymous hands can prompt an epiphany of inspiration. One excited designer at the "Workshop for Designers," held at GMD during MNfashion Fall Fashion Weekend, stated that she knew seeing the actual works by famous designers would influence her future designs.

In "The Intangible Measures of Success," David M. Lawson and Jay Goulart argue that qualitative factors - perceptions, satisfaction, and happiness—are important to an organization's growth. Success, they state, depends in part on the ability to interpret qualitative responses. What might these responses indicate? As the designer's comment above shows: a sense of ownership, a connection to the mission of the organization, and the achievement of personal goals.

Listening to your comments helps GMD improve. A long-standing member advised us that, although she liked the new monthly renewal system, the wording of the letters could be friendlier. A new supporter related that she was so pleased with the thoughtful handling of a complicated donation that she was willing to donate objects that she had previously held back. Both comments indicate a sense of ownership and help enhance the GMD experience.

A faculty member introduced to GMD through participation in the exhibition *Here By Design III: Process and Prototype*, stated: "We are so lucky to have a resource like GMD on campus for collaborations like this." The Goldstein experience is one that is shaped by a wide community. Thank you for helping to make it a part of your life.

Yours in good design,



## PRESIDENT'S MESSAGE

Bill Bloedow

PHOTOGRAPHY BY MARC NORBERG

As I write this, MPR is beginning the final day of their October fund drive and it's tough sledding. While acknowledging the current economic situation, they are continually repeating the reasons why listeners should join or renew.

They are not alone. Elsewhere in this issue you will find information on the GMD's annual giving campaign. Yes, we need your contributions, too. The Goldstein depends on community support, not just this year but also every year.

Reasons for you to support the GMD are many, but I'd like to focus on one. Design affects every aspect of our existence and the preservation of its history is crucial to the development of its future. For example, the Research Center is a vital tool that is available not only to CDes students, but the public as well. However, it costs money to open the doors every morning. It's easy to take resources such as this for granted, but we shouldn't.

The Goldstein is a lean machine and every penny you contribute will be wisely spent on preserving the history of design and ensuring the future of design research and development.

As we continue in our efforts to bring our "hidden treasure" to the public's attention, we need your help. Any amount you are able to contribute will not only be put to good use but will also be greatly appreciated.

Wishing you a happy and healthy holiday season and New Year!

## GOLDSTEIN STAFF

**DIRECTOR**  
Lin Nelson-Mayson

**ASSISTANT CURATOR**  
Jean McElvain

**REGISTRAR/MATERIALS LIBRARY COORDINATOR**  
Eunice Haugen

**ADMINISTRATOR**  
Barbara Porwit

**GRANT WRITER**  
Dr. Kathleen Campbell

### VOLUNTEER SPECIALISTS

**Curatorial Assistants**  
Dolores DeFore (Fashion),  
Mark Schultz (Costume),  
Dr. Rodney Allen Schwartz  
(Decorative Arts)

**Librarians**  
Mary Wittenbreer, Ann Cary

**Collection Volunteers**  
Richard Nelson

### GRADUATE ASSISTANTS

Angelina R. Jones, Saet Byul Park

### GALLERY/OFFICE STAFF

Sonya Boeser, Conner Cole,  
Eduardo Cortés, Laura Henslin,  
Rebecca Johnson, Pamela  
Krepmpely, Rebecca Lee, Carmen  
Tsang, Renee LaViolette

### COLLECTIONS ASSISTANT

Jennafer Crammer

### OFFICERS

*President*  
Bill Bloedow

*President Elect*  
Linda Hersom

*Secretary*  
Mark Schultz

*VP's Membership*  
Linda Boelter  
Pauline Altermatt

*VP Finance*  
Norm Steere

*VP Programs*  
Elise Linehan-Sass

*VP Development*  
Sheila Leiter

*Endowment Chair*  
Ann Birt

### MEMBERS

Dan Avchen, Liz Barerre, Roger Beck, Linda Boelter, Susan Bradley, Mark Caligiuri, Carlos Chavez, Rachele Herrmann, Joel Kaplan, Judith Kinghorn, Sheila Leiter, Betty Lyke Urie, Connie Soteropoulos, Becky Lyons, Bev Olson

### LIFE MEMBERS

Joanne Eicher, Gertrude Esteros, Gloria Hogan, Keith McFarland, Margot Siegel<sup>†</sup>

<sup>†</sup>*Friends Founder*

### EX-OFFICIO

Pauline Altermatt<sup>1</sup>, Jeanne Corwin<sup>2</sup>, Sarah Cox<sup>3</sup>, Marilyn DeLong, Tom Fisher, Dolly Fiterman<sup>4</sup>, Timothy Fleming<sup>5</sup>, Lois Gibson<sup>6</sup>, Susan Hagstrum, Lois Haugerud<sup>1</sup>, Vandora Linck<sup>1</sup>, Linda Mona<sup>4</sup>, Sandra Morris<sup>1</sup>, Lin Nelson-Mayson, Karen Owen-Tuzcu<sup>3</sup>, Martha Saul<sup>†</sup>

<sup>1</sup>*Past President*



*SUM OF THE PARTS:  
SURFACE DESIGN ASSOCIATION MEMBER-  
SHIP EXHIBITION 2007*

Through January 18, 2009 GOLDSTEIN MUSEUM GALLERY, MCNEAL HALL  
Juried by: Kyoung Ae Cho, Associate Professor, Art, University of Wisconsin, Milwaukee,  
Jan Myers-Newbury, quilt artist, DHA alumni



Linda B. Dunn, Cambridge, MA, USA, *Footnote*, 2007, cotton, procion dye, fabric paint, acrylic paint, embroidery floss, machine pieced, dyed, screen printed, painted, 52 ¼ x 18 x ¼"

Individual strands interlock and interlace to create structure. Multiple units connect becoming composition and texture. Color, pattern and imagery combine into complex surfaces. In this exhibition, the Surface Design Association showcases work by its members to create a whole that is more than simply the sum of the parts.

As part of the Surface Design Association's 2007 International Conference held at the Kansas City Art Institute, members were invited to submit work measuring 52" x 18" for an installation showcasing innovative use of textiles. The 100 pieces juried into this exhibition utilize fibers and materials ranging from window screening to gold leaf, bamboo to baling twine, chicken wire to silk organza. The works are hand dyed, woven, knitted, crocheted, quilted, batiked, rusted, composted, digitally printed, hand stitched, painted, discharged, fused, appliquéd, hooked, Jacquard woven, collaged, stamped, braided, screen printed, bonded, felted, embroidered, waxed, and pieced.

*Courtesy of Surface Design Association*

*Tour Development by Smith Kramer Fine Art Services, Kansas City, Missouri*

*Surface Design Association Sponsored Event*

*Presentation at The Goldstein Museum of Design sponsored in part by the Surface Design Association.*

EXPRESSIONS OF STABILITY AND CHANGE: ETHNIC DRESS AND FOLK COSTUME

February 7–June 14, 2009  
Goldstein Museum Gallery, McNeal Hall

See page 1 for information.

THE GREEN HOUSE: NEW DESIGNS IN SUSTAINABLE ARCHITECTURE & DESIGN

January 12–March 8, 2009  
HGA Gallery, Rapson Hall

The National Building Museum's acclaimed exhibition *The Green House: New Directions in Sustainable Architecture and Design* is the first to explore the field of green residential design as it reaches a turning point of acceptance by both home builders and the general public. Photographic images and drawings of 22 projects from around the world document the emergence of a new brand of sustainable building.

HORIZONS: PAINTINGS BY MARY GUZOWSKI, NATURE'S WONDERS: DRAWINGS BY VIRAJITA SINGH

January 20–April 30, 2009  
Reception on Friday January 23, 5:30–7 pm  
A/LA Library, Rapson Hall

Mary Guzowski and Virajita Singh are each engaged in a dialog with the changing phenomena of nature and with earthly objects that bring wondrous inspiration. Guzowski, an associate professor in architecture, says: "Painting is an opportunity to witness and engage the changing qualities and moods of the seasons. They are intended to capture an ever changing spirit and quality of time and place." For Singh, a senior research fellow at the Center for Sustainable Building Research, drawing objects from nature gives her a sense of the spiritual link between human existence and nature.

## EVENTS

### JAN MYERS-NEWBURY TALK AND GALLERY WALK THROUGH

December 2, 2008, 6 pm–7 pm  
McNeal Hall room 274, Reception with  
light refreshments following

Jan Meyers-Newbury, a juror for the exhibition *Sum of the Parts: Surface Design Association Membership Exhibition 2007*, will give a talk about her criteria for selecting pieces for the exhibition. Afterwards, she will give a guided gallery walk through of *Sum of the Parts*. A reception with light refreshments will follow the talk and walk through. Myers-Newbury is a quilt artist and DHA alumnus.

### MIDWINTER SURFACE DESIGN RETREAT

January 15–17, 2009  
McNeal surface design studios

The surface design studio at the University of Minnesota's College of Design will be warm and colorful, full of pigments, dyes and good company this January. Novice and experienced surface designers can explore dyeing, screen printing and letterpress surface design during a three-day retreat. Focus will be on both technique and composition. To register, call 612.624.7434, or visit us on the web at <http://goldstein.design.umn.edu/exhibitions/>

### PANEL DISCUSSION: “Retention of Tradition and the Immigrant Experience” and reception

Thursday, February 26, 2009, 6 PM  
Room 33 McNeal Hall

### PRESENTATION: “The Re-invention of Scandinavian Folk Dress in the Nineteenth Century”

Thursday, March 12, 2009, 6 PM  
Room 274 McNeal Hall

by Laurann Gilbertson, Textile Curator,  
Vesterheim, Norwegian-American Museum,  
Decorah, Iowa and reception

## CALENDAR

	DECEMBER	JANUARY	FEBRUARY	MARCH
<b>GOLDSTEIN MCNEAL</b> U of M St. Paul	SUM OF THE PARTS: Surface Design Association Membership Exhibition Through January 18, 2009		EXPRESSIONS OF STABILITY AND CHANGE: Ethnic Dress and Folk Costume February 7, 2009–June 14, 2009	
<b>HGA GALLERY RAPSON</b> U of M East Bank	ANXIOUS CLIMATE: Architecture at the Edge of Environment October 16– December 15, 2008	THE GREEN HOUSE: New Designs in Sustainable Architecture & Design, January 12– March 8, 2009		
<b>A/LA LIBRARY RAPSON</b> U of M East Bank	JOURNEYS: Travels Far and Travels Near Drawings by Winston Close and Roger Martin; photographs by Roger Clemence October 20–December 19	HORIZONS: Paintings by Mary Guzowski NATURE'S WONDERS: Drawings by Virajita Singh January 20–April 19, 2009		
<b>EVENTS</b>	JAN MYERS-NEWBURY: Talk and Gallery Walk Through December 2, 2008 6 pm–7 pm Reception with light refreshments following	MIDWINTER SURFACE DESIGN RETREAT January 15– January 17, 2009	EXPRESSIONS OF STABILITY AND CHANGE: Opening Party Friday February 6, 2009 7–9 PM	PANEL DISCUSSION: “Retention of Tradition and the Immigrant Experience” & reception Thursday, February 26, 2009, 6 PM

# MNFASHION'S FALL FASHION WEEKEND HIGHLIGHTS

On September 19, as part of MN Fall Fashion Weekend, the GMD's assistant curator, Jean McElvain, presented a program entitled "The Goldstein Museum of Design: A Resource For Designers." McElvain utilized items and images from the Museum's collection of over 18,500 apparel items. She presented three examples of ways that designers can use the collection as a point of departure:

- Dress from the 1920s illustrated how a particular era can inform designers.
- "The Little Black Dress" illustrated how designers have interpreted this archetypal dress.
- The designs of Bonnie Cashin illustrated how studying the successful continuity of a single designer can inform a designer's work.

The program was followed by a party that attendees left with swag bags. Refreshments and wine were provided and the Parisota Hot Club played gypsy jazz music. Curator Erin Jedlicka gave a tour of the Goldstein's exhibition *From Sportswear to Streetwear: American Innovation* which featured apparel from the collection and the community.

MN Fall Fashion Weekend was sponsored by MNfashion. For more information on Fall Fashion Weekend and MNfashion, visit <http://mnfashion.org>



Jean McElvain, Assistant Curator, speaks to a packed house at the MN Fall Fashion Weekend.

The Goldstein would like to extend our gratitude to the following individuals who donated to the Goldstein in memory of Kathleen Virginia (Pedersen) Dietrick (July 12, 1925–August 29, 2008):

- C. Virginia Bossons
- Janet Bye
- Ted E. Dietrick
- Ruth L. Kaegeorge
- Joyce Peters
- Kathleen Russell
- Waneta Shriver
- Donald D. Werner

## DONORS

The Goldstein gratefully acknowledges our donors from the last quarter, August through October 2008.

### MONETARY GIFTS

- Ms Sue J Bartolutti
- Ms Ann Carlson Birt
- Mrs Helen J Bliss
- Ruth Hanold Crane
- David & Linda Mona Fund of the Mpls Fdn
- Dolores Vnak DeFore
- Ms Dolores A Ginthner
- Ms Jody A Hauer
- Dr Karen L La Bat
- David L & Linda J Mona
- Lin Nelson-Mayson
- Mr Mark R Schultz
- Mrs Janice L Sickbert
- Margot Siegel

### IN-KIND DONATIONS (INCLUDING OBJECT DONATIONS TO THE COLLECTION)

- |                         |                               |
|-------------------------|-------------------------------|
| Ms Cori Ander           | Ms Lisa M Luttinen            |
| Barbara Armajani        | Mrs Mary L McGee              |
| Banner Creations Inc    | Minneapolis Institute of Arts |
| Mrs Joyce Butler        | Ms Margaret Mongsene          |
| Doris L Carlson         | Mrs Virginia S Morris         |
| Dolores Vnak DeFore     | Ms Fran Mullin                |
| Ms Alice H Engelman     | Rebecca & Forrest Price       |
| Ms Betty Halbreich      | Red Wing Shoe Co Inc          |
| Mrs Andrea Hricko Hjelm | Ms Mary Jane Schmidt          |
| Helen Kelley            | Mrs Janis H Stephenson        |
| Dr Karen L La Bat       | Ms Jane E Thomson             |

## MEMBERSHIP

The Goldstein gratefully acknowledges our new and renewing friends from the last quarter, August through October 2008.

Margery J Brewster	Dr Evelyn M Franklin	Jonathon D & Ann P Kemske
Ms Barbara Taylor Anderson	Mrs Margaret M Bubolz	Gustav F Weber
Ms Kathleen F Davoli	Mrs Helen Gail Mangold	Dorothy F Saltzman
Mrs Jeanne E Corwin	Gail M Tischler	Mark E Caligiuri
Dorothy Ziebell	Judith Kinghorn	Mrs Charlene A Burningham
Ann C Brey	Paula S Michel	Chris R & Audrey L Henningson
Ms Pauline M Altermatt	Mrs Patricia P Sander	General Mills Fdn
Ms Laurislee Pedro	Mary M Larson	Prof Keith & Mary Ellen McFarland
Ms Delores A Ginthner	Diane M Woelm	Susan J Timm
Dolores Vnak DeFolo	Nan A Skelton & Peter J Leach	Mrs June R Dahlager
Dr Gloria M Williams	Stephanie Leon	Anna E Atchley-Christoforides
Mrs Lois K Gibson	Elizabeth C Quinlan Fdn Inc	Mrs Margaret M Flolid
Dr Catherine A Cerny	Mrs Glenda M Cramer	Ms Carol C Waldron
Mrs Rosemond I Kucera	Elise Linehan-Sass	Mrs Gloria T Keil
Eunice L Milbrath	Mrs Janice L Sickbert	Ms Virginia A Newman
Minnesota Quilters Inc	Mrs Lois E Simeral	Mrs Karen Owen-Tuzcu
Madeline Betsch	Dr Jeffrey W Lang	Ms Patricia K Ewer
Mrs Virginia B Olson	Mrs Marion G Nord	Ms Kristin E Daby
Angel Matos	Mrs Ann S Phillips	Joan G Jones
Mrs Lois S Hirschmann	Holly E Breymaier	Dr Linda M Welters
Ms Kathryn J Reiley	Prof Hazel T S Stoeckeler	Ms Muriel J Shroyer
Melissa Hansen	Erin E Repesh	Pamela J K Jones
Norman V Steere	Ms Sheila G Leiter	
Susan Neill	Ms Margaret E O'Neill-Ligon	
DuVonne J Swenson	Ms Catherine K Sheehan	
Mrs Lois J Pflueger	Mr Robert V Hassen	
Ms Marit Lee Kucera	Elizabeth Barrere	
Jerilynn Ommen	Mrs Marlene J Banttari	
Constance E Soteropulos	Barbara A Clarity	
Kristi M Flanagan Villar	Joan K Regal	
Mrs Ruth Meyer-Lerdal	Ms Linnea K Tweed	
Linda L Hersom	Mr Mark R Schultz	
Mary Galbraith	Mr Seymour Locketz	
Geoff and Marie Bush	Mrs Sharron L Steinfeldt	
Linda Boelter	Mary Guilford Plumb	
Dr Karen L La Bat	Kathryn M Johnson	

## CONTACT AND HOURS

PHONE 612.624.7434

FAX 612.625.5762

WEB <http://goldstein.design.umn.edu>

EMAIL [gmd@umn.edu](mailto:gmd@umn.edu)

PLEASE CALL OR CHECK OUR WEBSITE FOR HOLIDAY CLOSINGS.

### MCNEAL-ST. PAUL CAMPUS

The Goldstein Museum's gallery is in 241 McNeal Hall and the Research Center is in 333 McNeal, 1985 Buford Avenue.

### HOURS

The gallery is open Monday–Wednesday, & Friday 10am–4pm, Thursday 10am–8pm and weekends 1:30–4:30pm. Call for an appointment at the Research Center: 612. 625. 2737

### ADMISSION AND PARKING

Admission is free. Parking is in the nearby Gortner Ramp at 1395 Gortner Avenue. The parking ramp and the Museum are both handicapped accessible.

### MAP LINK:

<http://goldstein.design.umn.edu/visitus.html>

### RAPSON-MINNEAPOLIS CAMPUS

The HGA Gallery is in the lobby and the Architecture and Landscape Architecture Library is in 210 Rapson Hall, 89 Church St.

### HOURS

The HGA Gallery is open daily from 8am–6pm.

The Library is open Monday–Thursday 9am–9pm, Friday 9am–6pm, and weekends 1–5pm, Joon J. Morne: 612. 624.1638

### ADMISSION AND PARKING

Admission is free. Parking is across the street in the Church Street Ramp at 80 Church Street SE. The parking ramp and Rapson are both handicapped accessible.

MAP LINK: <http://www1.umn.edu/twincities/maps/RapsonH/>

**BOTH MCNEAL AND RAPSON ARE CLOSED ON UNIVERSITY HOLIDAYS.**

## COLLEGE OF DESIGN UNIVERSITY OF MINNESOTA

*The University of Minnesota is an equal opportunity educator and employer. This publication/material is available in alternative formats upon request. Direct requests to Barbara Porwit, The Goldstein Museum of Design, 364 McNeal, 612-624-7434.*



Printed on recycled and recyclable paper with at least 10% postconsumer material.

Newsletter design: ByDesign [bydesign.umn.edu](http://bydesign.umn.edu)