

FEBRUARY 19, 1998

The second meeting of the Twin Cities Campus Assembly for 1997-98 was convened in 25 Law Building, Minneapolis campus, on Thursday, February 19, 1998, at 4:57 p.m. Checking or signing the roll as present were 113 voting faculty/academic professional members, 32 voting student members, 2 ex officio member, and 9 nonmembers. President Mark Yudof presided.

CONSENT AGENDA
Action (

Agenda Items I. and II. are considered to be noncontroversial or "housekeeping" in nature and are offered as a "Consent Agenda" to be taken up as a single item with one vote. Any item will be taken up separately at the request of a Senator. A majority of those members present and voting is required for approval.

I. MINUTES FOR NOVEMBER 13, 1997**II. COMMITTEE ON COMMITTEES**
Committees of the Assembly, 1997-98

INTERCOLLEGIATE ATHLETICS - Civil Service: Duane Nelson. **Students:** Lee Hutton, Kim Sveum.

STUDENT BEHAVIOR - Students: Dustin Berger, Todd Kimlinger, James Kroger, Jill Lange, Kevin McDowell, Adam Spees.

FOR INFORMATION:

ACADEMIC HEALTH CENTER PROVOSTAL STUDENT CONSULTATIVE - Students: Christian Calaguas, Lisa Lidahl, Sara Olson, Amy Stefaniak, Michael Vollmer.

COMMITTEE ON COMMITTEES - Faculty/PA: W. Phillips Shively. **Students:** Mark Ott.

STEERING - Students: Martin O'Hely, Laura Taken. **Ex Officio:** Jesse Berglund.

EMILY HOOVER, Chair
COMMITTEE ON COMMITTEES

DISCUSSION:

The Consent Agenda was approved without discussion.

APPROVED

**III. REPORT OF THE NOMINATING COMMITTEE FOR THE
TWIN CITIES ASSEMBLY STEERING COMMITTEE
Action by the Faculty Assembly and UMD Faculty Senators
Action**

MOTION:

That the Faculty Assembly and UMD faculty senators approve the following slate: Avner Ben-Ner, Linda Brady, Thomas Clayton, Roberta Humphreys, Geoffrey Maruyama, Fred Morrison, V. Rama Murthy, James Perry.

FOR INFORMATION:

The Nominating Committee appointed by the Twin Cities Campus Assembly at its November 13, meeting, to name candidates to fill, by the election process, one 1998-99 and three 1998-2001 Twin Cities/UMD faculty positions on the Senate Consultative/Assembly Steering Committee presents the following eight names, from which four are to be elected by mail ballot by the Twin Cities and non-represented UMD faculty:

FOR 1998-99 TERM

ROBERTA HUMPHREYS: 1972*, Professor of Astronomy, Institute of Technology. University Senate member: 1983-86, 1990-93, 1996-99. Committee participation (past and present): Senate Consultative Committee; Senate Educational Policy Committee; Senate Faculty Affairs Committee; Arts, Sciences, and Engineering Provostal Faculty Consultative Committee; University and Faculty Senate Vice Chair; Search Committee for Provost of Arts, Sciences, and Engineering; Search Committee for Dean of IT; Science and Scholarly Advisory Board; IT Consultative Committee (Chair).

GEOFFREY MARUYAMA: 1976*, Professor of Educational Psychology, College of Education and Human Development; Adjunct Professor of Psychology, College of Liberal Arts. University Senate member: 1983-86, 1989-92. Committee participation (past and present): Senate Committee on Committees (Chair); Senate Consultative Committee; Senate Faculty Affairs Committee (Chair); Intercollegiate Athletics Committee; Senate Finance Committee; College of Education Consultative Committee (Chair); College of Education Senate; College of Education Diversity Committee (Chair); eight University-wide search committees. Other: Faculty Legislative Liaison, 1989-91.

FOR 1998-2001 TERM

AVNER BEN-NER: 1988*, Professor and Director, Industrial Relations Center, Carlson School of Management. University Senate member: 1994-97. Committee participation (past and present): Professional Studies Provostal Faculty Consultative Committee; Senate Faculty Affairs Committee (chair); Provost's Council; Senate Faculty Retirement Plan Subcommittee (chair); Senate Finance and Planning Committee; Center for Labor Policy Advisory Board; Institute of Public Affairs Ph.D. Planning Committee; University Health Plans Task Force; U of M Hearing Officers' Panel; School of Management Faculty Appointments and Promotions Committee; AAUP Twin Cities Board of Directors.

LINDA BRADY: 1987*, Professor of Food, Science, and Nutrition; College of Agricultural, Food, and Environmental Sciences. University Senate member: 1994-97. Committee participation (past and present): Council on Liberal Education; Senate Student Affairs Committee; Council on Undergraduate Biology Education Task Force; Visions for Change Steering Committee; COAFES Curriculum Committee; COAFES Dean's Search Committee; Graduate School Fellowship/Block

Grant Committee; University Quality Improvement Project; 1996 Little Red Oil Can Award for Service to St. Paul Campus; 1996 Michigan State University College of Human Ecology Centennial Outstanding Alumni; Journal of Nutrition and The Biochemical Journal Editorial Boards. Other: McKnight Land Grant Professor 1989-92.

THOMAS CLAYTON: 1968*, Professor of English Language and Literature, Adjunct Professor of Classical and Near Eastern Studies, College of Liberal Arts. University Senate member: 1973-76, 1977-80, 1982-85, 1987-90, 1991-94, 1996-99. Committee participation (past and present): Senate Academic Standing and Relations Committee; Senate Educational Policy Committee (chair); Senate Faculty Affairs Committee (chair); Senate Honors Programs Committee; Senate Use of Human Subjects in Research Committee; CLA Dean Search Committee; University Task Force on Mandatory Retirement; Morse-Alumni Teaching Award Selection Committee; Graduate School Ad hoc Committee on Doctoral Programs (chair); Task Force on the Quality of Graduate Education and Research; CLA Assembly; Task Force on College Priorities. Other: current chair, Classical Civilization Program.

FRED MORRISON: 1969*, Professor of Law, Law School. University Senate member: Senate Parliamentarian. Committee participation (past and present): Senate Finance and Planning Committee (Chair); Senate Consultative Committee (Ex Officio); University Tenure Committee (Chair); University Grievance Committee (Chair); Acting University Grievance Officer; Law School Planning and Accreditation Committee (Chair); Law School International Programs Committee (Chair). Other: Former Acting Dean.

V. RAMA MURTHY: 1965*, Professor of Geology and Geophysics and Director, Lower Division Programs, Institute of Technology. University Senate member: 1974-77, 1992-95, 1996-99. Committee participation (past and present): Senate All-University Honors Committee; Senate Committee on Committees; Senate Library Committee; Search Committee for three Vice Provosts; Selection Committee for the Josie Johnson Award in Human Rights and Social Justice; President's Committee on Teaching and Learning; Member and Chair of IT Consultative Committee; President's Committee on Supercomputing; President's Task Force on Excellence through Diversity; Graduate School Committee on Masters in Liberal Education; Graduate School Research Executive Committee (ex-officio); U of M Representative to Universities Consortium for Atmospheric Research (UCAR); Minority Advisory Committee to the President; Search Committee for Associate Vice President for Alumni Relations and Development; Search Committee for Associate Vice President for Minority Affairs; Chair and Member of Board of Directors of the Minnesota Supercomputing Center; Regents' Advisory Committee for Presidential Search; Search Committee for IT Dean; Search Committee for Head, Mechanical Engineering; IT Administrative Council. Other: Mr. and Mrs. George W. Taylor Distinguished Professor-1994; Institute of Technology Professor-1996; President, U of M Twin Cities Chapter of American Association of University Professors (AAUP)-1997; Member, AAUP National Committee on College and University Teaching, Research and Publications (1997-00).

JAMES PERRY: 1982*, Professor of Forest Resources, College of Natural Resources. University Senate member: 1987-90, 1993-96. Committee participation (past and present): Professional Studies Provostal Faculty Consultative Committee; Executive Committee Water Resource Science Graduate Program (Chair); Graduate School Task Force on Distance Education (Ex Officio); Graduate Faculties in Forestry, Water Resource Science, Conservation Biology, Plant Biology; College of Natural Resources Single Quarter Leave Committee; Board of Directors, Minnesota Center for Environmental Advocacy; Editorial Board, Adaptation and Mitigation Strategies for Global Change; Institute for Forestry, Agriculture, and Home Economics Faculty Consultative Committee; College International Education Officer; College of Natural Resources Faculty Consultative Committee (Chair); College of Natural Resources Promotions and Tenure Committee; Bush Sabbatical Leave Committee; Fullbright Committee for Africa (Chair); Peer Review Panel for US EPA; Minnesota Environmental Education Board; Board of Directors, Minnesota Academy of Science; Regional Coordinator for the UMTC-UW Madison collaboration; Director of the Center for Natural Resource Policy and Management; Director of Graduate Studies in Water Resources.

The Assembly Steering Committee serves as the executive committee of the Twin Cities Campus Assembly and forms the Twin Cities membership of the Senate Consultative Committee. Recent Senate and Assembly legislation has merged the Twin Cities faculty and non-represented UMD faculty for purposes of Senate Consultative/Assembly Steering Committee elections. Should a non-represented UMD faculty member be elected, that individual will be a member of the Senate and Faculty Senate Consultative Committees, but shall not be a member of the Assembly Steering Committee.

Additional nominations, certified as willing to stand for election, may be made by (1) petition of 12 voting members of the faculties, provided that the petition is in the hands of the Clerk of the Twin Cities Campus Assembly the day before the Twin Cities Campus Assembly meeting, and (2) nominations on the floor of the Assembly. The faculty representatives of the Twin Cities Campus Assembly shall reduce by vote the slate to twice the number to be elected.

Currently serving with terms continuing at least through next year are:

Mary Dempsey, Medical School
Sara Evans, College of Liberal Arts
David Hamilton, Medical School
Matthew Tirrell, Institute of Technology

The terms of Carole Bland (Medical School), Victor Bloomfield (College of Biological Sciences), Virginia Gray (College of Liberal Arts), and Russell Hobbie (IT) expire at the end of the academic year.

*Date of initial appointment at the University.

CHARLES CAMPBELL, Chair
AMOS DEINARD
JAMES LUBY
GAIL PETERSON
JEAN QUAM
KENDALL WALLACE

DISCUSSION:

The slate of names for the Senate Consultative/Assembly Steering Committee election was approved without discussion.

APPROVED

IV. FACULTY ASSEMBLY STEERING COMMITTEE
Report of the Task Force on Faculty Consultation
Action

PREAMBLE:

The following amendments to the Assembly Constitution and Bylaws are necessary to implement the recommendations of the Task Force on Faculty Consultation. Refer to Item VII on the University Senate agenda.

MOTION 1:

To amend the Twin Cities Campus Assembly Constitution, Article II. 1., Membership, as follows: [new language is underlined]

ARTICLE II. TWIN CITIES CAMPUS ASSEMBLY

1. Membership

The Assembly shall be composed of the following voting membership: (a) the president of the University; (b) the Twin Cities campus members of the Senate Consultative Committee, who shall serve as ex officio voting members; and (c) the elected faculty, academic professional, and student representatives of the various institutes, colleges, and schools of collegiate rank, and the Graduate School. Only elected faculty/academic professional representatives or properly designated faculty/academic professional alternates shall serve as the Faculty Assembly; the elected student representatives shall serve on the Minnesota Student Association Forum, or the Graduate and Professional Student Assembly, as designated by the student constituency in the electing college. Each member of the Assembly shall represent the Twin Cities campus as a whole, but members are expected to communicate on a regular basis with their respective college governance bodies and constituent groups concerning Twin Cities governance issues. The Twin Cities campus academic officers with class titles 9302-9329 shall serve as ex officio nonvoting members. Chairs of the Twin Cities college faculty consultative committees and the chair of the Academic Health Center Faculty Consultative Committee shall, if not otherwise elected, serve as ex officio nonvoting members. The student body president shall, if not otherwise elected, serve as an ex officio nonvoting member.

MOTION 2:

To amend the Assembly Bylaws, Article III. 5, Provostal Faculty Consultative Committees, as follows: [language to be deleted is struck out]

~~5. PROVOSTAL FACULTY CONSULTATIVE COMMITTEES~~

~~There shall be a Provostal Faculty Consultative Committee (PFCC) within each of the provostries on the Twin Cities campus. Each PFCC shall represent the faculty at large of its respective provosty and not the individual institutes, colleges, schools, or departments within the provosty.~~

~~Membership~~

~~The Provostal Faculty Consultative Committees shall be composed as follows:~~

~~**Academic Health Center:** 8 faculty members [2 from the Medical School and 1 each from Dentistry, Nursing, Pharmacy, Public Health, Veterinary Medicine, and the UMD School of Medicine].~~

~~**Arts, Sciences, and Engineering:** 6 faculty members [2 each from the College of Liberal Arts and the Institute of Technology and 1 each from the College of Biological Sciences and General College].~~

~~**Professional Studies:** 9 faculty members [1 each from Agricultural, Food, and Environmental Sciences; Architecture and Landscape Architecture; Education and Human Development; Human Ecology; Law; Management; University of Minnesota Extension Service; Natural Resources; and Public Affairs].~~

~~Members shall be nominated in accordance with procedures established for the Faculty Consultative Committee election and elected by college. Terms of office shall be three years with terms beginning July 1 and terminating June 30. No member is eligible to serve more than two consecutive full terms. Elections shall be so adjusted that the terms of approximately one third of the members shall expire each year.~~

~~In case of a faculty vacancy, the remaining members of the Provostal Faculty Consultative Committee by majority vote shall fill the vacancy by interim appointment until the next general election. In the event of changes in collegiate structure, the Faculty Assembly Steering Committee shall be authorized to redistribute the membership within the appropriate PFCC.~~

~~Each Provostal Faculty Consultative Committee shall elect its chair from amongst its members for a one-year term of office. The chair shall be eligible for re-election to that position.~~

Duties and Responsibilities

- ~~a. To meet at least monthly to discuss matters of concern to the faculty.~~
- ~~b. To meet regularly with the provost and other academic officers to represent the viewpoints of the faculty.~~
- ~~c. The chair of each Provostal Faculty Consultative Committee shall meet quarterly with the chair of the respective Provostal Student Consultative Committee to discuss issues of concern to both faculty and students, and the two committees shall meet jointly as deemed necessary by the chairs.~~
- ~~d. To meet periodically with Faculty Senate/Assembly members from the respective provosty to facilitate communication with the faculty.~~
- ~~e. To meet with the Faculty Consultative Committee/Twin Cities Campus Faculty Assembly Steering Committee at least annually.~~
- ~~f. To report to the Faculty Assembly Steering Committee.~~
- ~~g. To submit an annual report to the Faculty Assembly Steering Committee.~~

MOTION 3:

To amend the Assembly Bylaws, Article III. 7., Steering Committees, as follows [new language is underlined]

Faculty Steering Committee

....

Duties and Responsibilities

- a. To meet separately, when necessary, to discuss with the president, or others, matters of concern to the faculty.
- b. To serve as the executive committee and steering committee of the Faculty Assembly.

- c. To meet regularly with the Provost and Executive Vice President to address issues relevant to the Twin Cities campus or clusters of collegiate units.
- d. To meet periodically with the Senior Vice President for Health Sciences to facilitate communication and coordination of policies and efforts across the Twin Cities campus.
- e. To meet periodically with groups of senators and college consultative committee chairs from the represented units to facilitate communication of concerns between the faculty and administration.

WITHDRAWN

V. FACULTY ASSEMBLY STEERING COMMITTEE
Nominating Committee, Committee on Committees
Action by the Faculty and Academic Professional Assembly members

MOTION:

To approve the following membership of a Nominating Committee to select Twin Cities faculty/academic professional candidates to stand for election to the Senate/Assembly Committee on Committees: W. Andrew Collins (chair), Catherine French, M. Janice Hogan, Toni McNaron, Ted Oegema.

COMMENT:

The Nominating Committee is responsible for identifying Twin Cities faculty and academic professionals interested and willing to stand for election to the Senate/Assembly Committee on Committees, and will present a slate of candidates to the Assembly at its next meeting. If approved, the Faculty Assembly will elect two to serve 3-year terms on the Committee on Committees.

VICTOR BLOOMFIELD, Chair
FACULTY ASSEMBLY STEERING COMMITTEE

DISCUSSION:

The membership of the Nominating Committee was approved without discussion.

APPROVED

VI. EDUCATIONAL POLICY COMMITTEE
Proposed Schedule for the Twin Cities Campus
Discussion

The Senate Committee on Educational Policy (SCEP) and the Provost for Arts, Science, and Engineering appointed a subcommittee last year (Winter 1997) to consider complaints that arose from students taking courses on both the Minneapolis campus and the St. Paul Campus. The complaints related to the students' inability to move between the two campuses and take courses in a timely manner; a number of faculty reported that it was disruptive to have students enter classes late or leave early in order to get to or from a class on the other campus. Prior to fall 1996, the class schedules on the two campuses were staggered; that staggering ended at the request of a number of

faculty, staff and administrators on the St. Paul campus, primarily because the St. Paul campus was losing a class hour during the day. The request was granted by SCEP.

The "staggered class" subcommittee considered numerous options regarding the scheduling of classes as well as transportation issues and issues related to semesters, and actually walked the campuses and rode the buses in order to judge the amount of time it takes to get different places.

Proposed Schedule for the Twin Cities Campus beginning Fall 1999:

<u>Period</u>	<u>East Bank/West Bank</u>	<u>Saint Paul</u>
I	7:45-8:35	8:15-9:05
II	8:50-9:40	9:20-10:10
III	9:55-10:45	10:25-11:15
IV	11:00-11:50	11:30-12:20
V	12:05-12:55	12:35-13:25
VI	13:10-14:00	13:40-14:30
VII	14:15-15:05	14:45-15:35
VIII	15:20-16:10	15:50-16:40
IX	16:25-17:15	16:55-17:45

COMMENT:

1. This schedule allows 15 minutes passing time within each campus
2. Cross-passing time is 45 minutes from Minneapolis to St. Paul, and 50 minutes from St. Paul to Minneapolis. To manipulate the schedule so the time between classes is less leads to the situation that the period is acceptable for students going one way, but becomes unacceptable the other.
3. The East Bank/West Bank start time is earlier as that is a transit hub for students coming commuting to the University. Many students leave from the East Bank for St. Paul.
4. This allows both campuses the full allotment of class periods during the day.

LAURA COFFIN KOCH, Chair
EDUCATIONAL POLICY COMMITTEE

WITHDRAWN

VII. OLD BUSINESS

NONE

VIII. NEW BUSINESS

NONE

IX. ADJOURNMENT

The meeting was adjourned at 5:02 p.m.

> >College of
> >Veterianry Medicine. However, I have a couple of questions to ask you:
> > - Can P & A faculty serve on this committee?
> > - Is there a possible conflict for persons that are also serving on
> >the
> >Deans selection committee for the CVM?
> >
> >
> >Sincerely,
> >
> >Elaine Robinson
> >
> >
> >
>
> Vickie Courtney
> U Senate
> 427 Morrill Hall
> 625-4805
> courtney@mailbox.mail.umn.edu
>
>

From: Martha Kvanbeck
To: arosk001@tc.umn.edu, berry002@tc.umn.edu, thuntley@d.umn.edu,
CC: courtney@mailbox.mail.umn.edu
Subject: AHC-FCC Election
Date: Thu, 6 Aug 1998 14:22:15 -0500 (CDT)

August 5, 1998

To: AHC-Committee on Committees
Professor Mila Aroskar
Professor Susan Berry
Professor Thomas Huntley
Professor Elaine Robinson
Professor Thomas Shier
Professor T. Michael Speidel
Professor Patricia Tomlinson
Professor Douglas Wangensteen

From: Martha Kvanbeck, Clerk of the Senate
Re: AHC-Faculty Consultative Committee Election

In accordance with the bylaws of the Twin Cities Campus Assembly, vacancies on the AHC-Faculty Consultative Committee (AHC-FCC) are to be filled by the electoral process. Assembly rules require that a Nominating Committee be identified by the Twin Cities Faculty Assembly Committee on Committees and ratified by the Twin Cities Faculty Assembly (Assembly). It is the recommendation of the Assembly that the AHC-Committee on Committees serve as the Nominating Committee for this election.

Therefore, I am writing on behalf of the Twin Cities Faculty Assembly to ask your willingness to serve on this special Nominating Committee. The Nominating Committee will be responsible for soliciting nominations from the appropriate AHC units and preparing election ballots for those units. Vickie Courtney in the Senate Office will provide staff support to the committee and oversee the elections.

Please let me know of your availability to serve on the Nominating Committee by AUGUST 24.

Thank you.

c: Vickie Courtney

Martha A. Kvanbeck (612) 625-0310 phone
Clerk of the Senate and (612) 626-1609 fax
Administrative Director kvanbeck@mailbox.mail.umn.edu
University Senate http://www.umn.edu/usenate
427 Morrill Hall

From: Martha Kvanbeck
To: s-ewan@tc.umn.edu, mjhogan@che2.che.umn.edu, lbrady@che2.che.umn.edu,
CC:
Subject: AHC-FCC Election
Date: Mon, 3 Aug 1998 13:04:11 -0500 (CDT)

To: Faculty Assembly Steering Committee

From: Martha

You may recall that a month or so ago FCC recommended that an election be held early fall quarter to elect new members of the AHC-FCC. According to our bylaws, we are to follow the same process for that election as we do for the FCC election. This means that the Faculty Assembly Committee on Committees recommends to the Faculty Assembly the membership of a Nominating Committee which will be charged with soliciting nominations and preparing the ballot. [In the future, one nominating committee will be asked to handle both elections.]

The Faculty Assembly Committee on Committees has identified the individuals listed below to serve as the Nominating Committee and asks that the Faculty Assembly Steering Committee, acting on behalf of the Faculty Assembly, ratify the membership of the committee in order that it may proceed with the election.

The following people currently serve as the AHC Faculty Assembly Committee on Committees and were elected by their constituents.

PLEASE LET ME ME YOUR VOTE.

Proposed Nominating Committee:

Mila Aroskar
Public Health

Elaine Robinson
Vet Med

Patricia Tomlinson
Nursing

Susan Berry
Pediatrics/Med Sch

Thomas Shier
Pharmacy

Douglas Wangenstein
Physiology/Med Sch

Thomas Huntley
Biochem & Mol Bio
UMD

T. Michael Speidel
Dentistry

**ELECTION BALLOT
AHC COMMITTEE ON COMMITTEES**

VOTE FOR NO MORE THAN ONE OF THE FOLLOWING TWO INDIVIDUALS

MEDICAL SCHOOL - CLINICAL SCIENCES

- JOHN BANTLE**, Professor, Medicine. Senate membership: University Senate, 1988-91, 1993-94, 1995-98.
- SUSAN BERRY**, Professor, Pediatrics. Senate membership: University Senate, 1997-2000.

VOTE FOR NO MORE THAN ONE OF THE FOLLOWING TWO INDIVIDUALS

MEDICAL SCHOOL - BASIC SCIENCES

- DOUGLAS WAGENSTEEN**, Associate Professor, Physiology. Senate membership: University Senate, 1990-93, 1994-97; Committee on Student Behavior, 1983-85.
- CHRISTOPHER WYLIE**, Professor, Pediatrics. Senate membership: University Senate, 1997-2000.

VOTE FOR NO MORE THAN ONE OF THE FOLLOWING TWO INDIVIDUALS

SCHOOL OF DENTISTRY

- JIM HOLTAN**, Associate Professor, Restorative Sciences. Senate membership: University Senate, 1992-94.
- MICHAEL SPEIDEL**, Professor, Orthodontics. Senate membership: University Senate, 1994-97, 1998-2001; Judicial Committee, 1996-98.

VOTE FOR NO MORE THAN ONE OF THE FOLLOWING TWO INDIVIDUALS

SCHOOL OF NURSING

- BERNIE FELDMAN**, Associate Professor, Nursing. Senate membership: University Senate, 1996-99; Finance and Planning Committee, 1980-84; Student Affairs Committee, 1989-91 (Chair 1989-91).
- PATRICIA TOMLINSON**, Professor, Nursing. Senate membership: University Senate, 1997-99; Judicial Committee, 1992-95, Student Behavior Committee, 1986-89.

VOTE FOR NO MORE THAN ONE OF THE FOLLOWING TWO INDIVIDUALS

COLLEGE OF PHARMACY

YUSUF ABUL-HAJJ, Professor, Medicinal Chemistry. Senate membership: University Senate, 1996-98.

THOMAS SHIER, Professor, Pharmacy. Senate membership: University Senate, 1990-93.

VOTE FOR NO MORE THAN ONE OF THE FOLLOWING TWO INDIVIDUALS

SCHOOL OF PUBLIC HEALTH

MILA AROSKAR, Associate Professor, Public Health. Senate membership: University Senate, 1986-89, 1991-92, 1995-98; Social Concerns Committee, 1988-89.

JOHN KRALEWSKI, Professor, Health Services Research and Policy. Senate membership: University Senate, 1981-84, 1997-2000; Equal Employment Opportunity for Women Committee, 1982-83; Finance and Planning Committee, 1988-89.

VOTE FOR NO MORE THAN ONE OF THE FOLLOWING TWO INDIVIDUALS

COLLEGE OF VETERINARY MEDICINE

ALAN LIPOWITZ, Professor, Small Animal Clinical Sciences. Senate membership: University Senate, 1990-93.

ELAINE ROBINSON, Associate Professor, Small Animal Clinical Sciences. Senate membership: University Senate, 1992-95.

VOTE FOR NO MORE THAN ONE OF THE FOLLOWING TWO INDIVIDUALS

DULUTH SCHOOL OF MEDICINE

THOMAS HUNTLEY, Associate Professor, Biochemistry and Molecular Biology. Senate membership: University Senate, 1995-97.

OMELAN LUKASEWYCZ, Associate Professor, Medicine. Senate membership: University Senate, 1996-99.

Note: Faculty/academic professional appointments to committees of the Senate are normally made for terms of three years, with appointments so adjusted that the terms of approximately one third of the members expire each year. Since this is the inaugural year of the AHC Committee on Committees, this adjustment will be made by staggering the terms of the elected members in a manner to be decided after the voting.

BALLOTS MUST BE RECEIVED IN THE OFFICE OF THE AHC ASSEMBLY NO LATER THAN 4:30 P.M. ON MONDAY, MAY 26, AND THE ENVELOPE MUST BEAR THE SIGNATURE OF THE VOTER IN THE UPPER LEFT-HAND CORNER TO BE COUNTED.

AHC NOMINATING COMMITTEE FOR COMMITTEE ON COMMITTEES

1997-1998

List compiled on: 4/9/98

REPRESENTATIVES, FACULTY

1 to be named

UMD Med Representative

Donna Brauer

✓ Nursing
6-101 Weaver-Densford
East Bank
braue002@maroon.tc.umn.edu
fax: 626-2359
624-1100

Mark Rosenberg

✓ Medicine
Box 736 Mayo
East Bank
rosen001@tc.umn.edu
fax: 625-2174
624-9444

Thomas Shier

✓ Pharmacy
8-168 Weaver-Densford
East Bank
shier001@maroon.tc.umn.edu
fax: 624-2974
624-9465

Jill Stoltenberg

✓ Preventative Science *msg 5/5*
9-436 Moos Tower
East Bank
stolt001@maroon.tc.umn.edu
fax: 626-6096
625-5651

Deb Swackhamer

Enviro & Occup Hlth
Box 807 Mayo
East Bank
dswack@mail.eoh.umn.edu
fax: 626-0650
626-0435

Jim Waddell

Clinical & Population Sci
385 Animal Sci/Vet Med
St. Paul Campus
wadde001@tc.umn.edu
fax: 625-1210
625-3118

SENATE STAFF

Vickie Courtney

University Senate
428 Morrill Hall
East Bank
courtney@mailbox.mail.umn.edu
fax: 626-1609
625-4805

If you have any questions, please contact the University Senate Office at 625-9369

Med School -

General

- John Bonett ①
- Susan Berry 2 ②
- Marshall Hertz 4
- Kathleen Watson 3

Basic Science

- 1 Kathleen Conklin
- 2 Christopher Wolfe ①
- 3 Douglas Wansington ②

Marcia Lewis
2-year

- ① Dentistry ^{and}
- OK Jim Holtan
- Joy Osborn
- ② T. Michael Seidel

- 1-year Nursing
- ① Patricia Criskey
- ① Patricia Tomlinson
- 3-year Bernie Feldman

Pharmacy

- ① Abel-Hay (Young)
- Trinity Wedman
- ② ^{Tom} Eric (if necessary)

OK Public Health

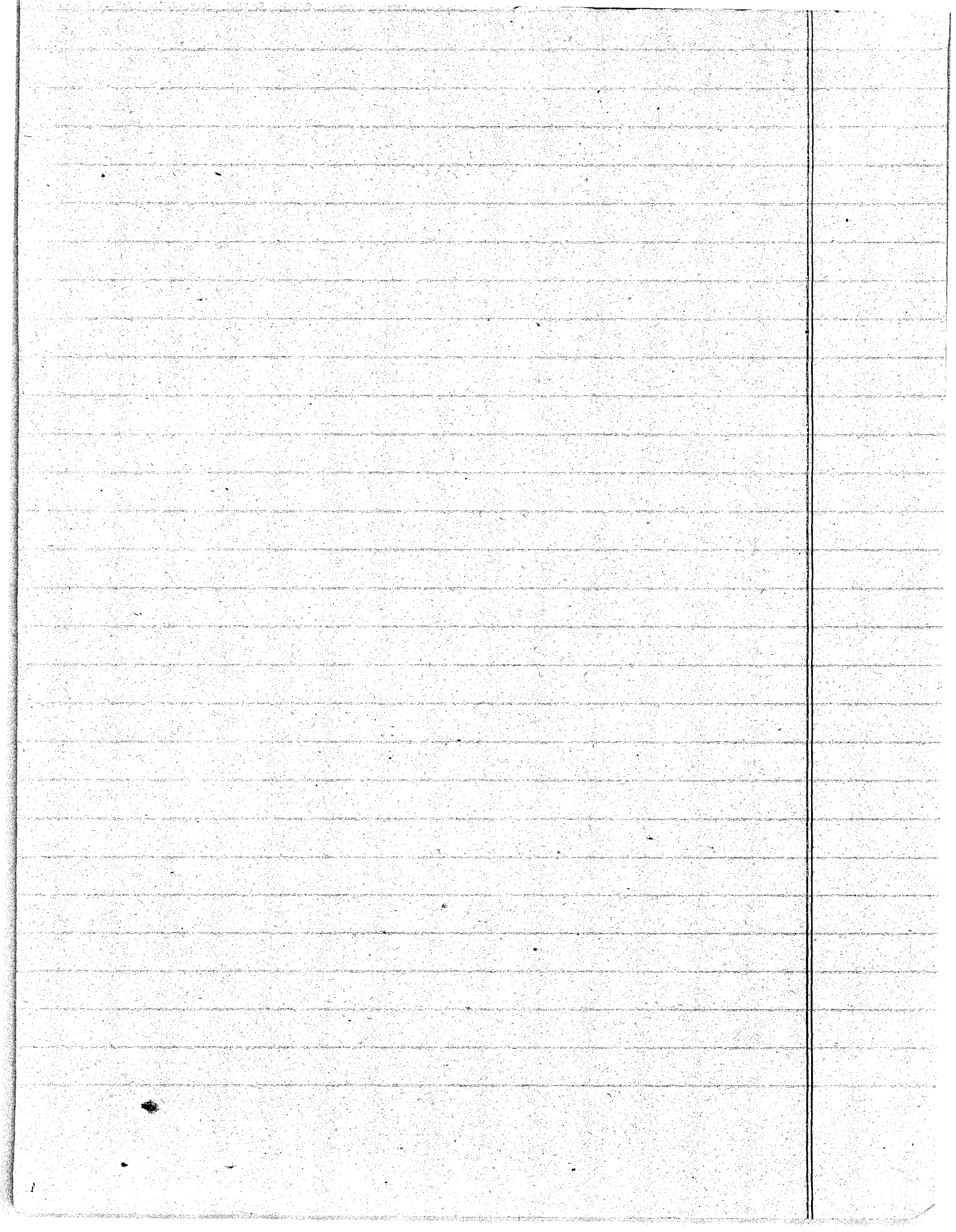
- ① Mili Arskar -
- Jan Foster -
- ② Kralewski, John -

Vet med

Bert Slomberg

- ① Elaine Robins - 5-3147
- ② Alan Lipovitz - 5-7249

OK



-NAME Lester Drewes

SENATE TERM 93-94
94-95
95-96

②
Dutch

NAME Louise Hawley

SENATE TERM 92-93
93-94
94-95

②
NAME Thomas Huntley

SENATE TERM 95-96
96-97

Dutch
Pop

NAME Frederic Hafferty

SENATE TERM 84-85
85-86
86-87
89-90
90-91
91-92

①
NAME Omelan Lukasewycz

SENATE TERM 96-97
97-98
98-99

NAME Barbara Elliott

SENATE TERM 97-98
98-99
99-00

Name Lester Drewes

Senate Term 93-96

Name Louise Hawley

Senate Term 92-95

Name Richard Eisenberg

Senate Term 90-93

Name Frederic Hafferty

Senate Term 84-87, 89-92

AK

*Gary Davis - SCC - ex officio
last two years.*

AHC - Nominating Committee
for C-on-C.
Nominating Committee
School of Dentistry.

2 people -

Regular faculty - who know about governance

Greg Germaine
Jill Stoltenberg



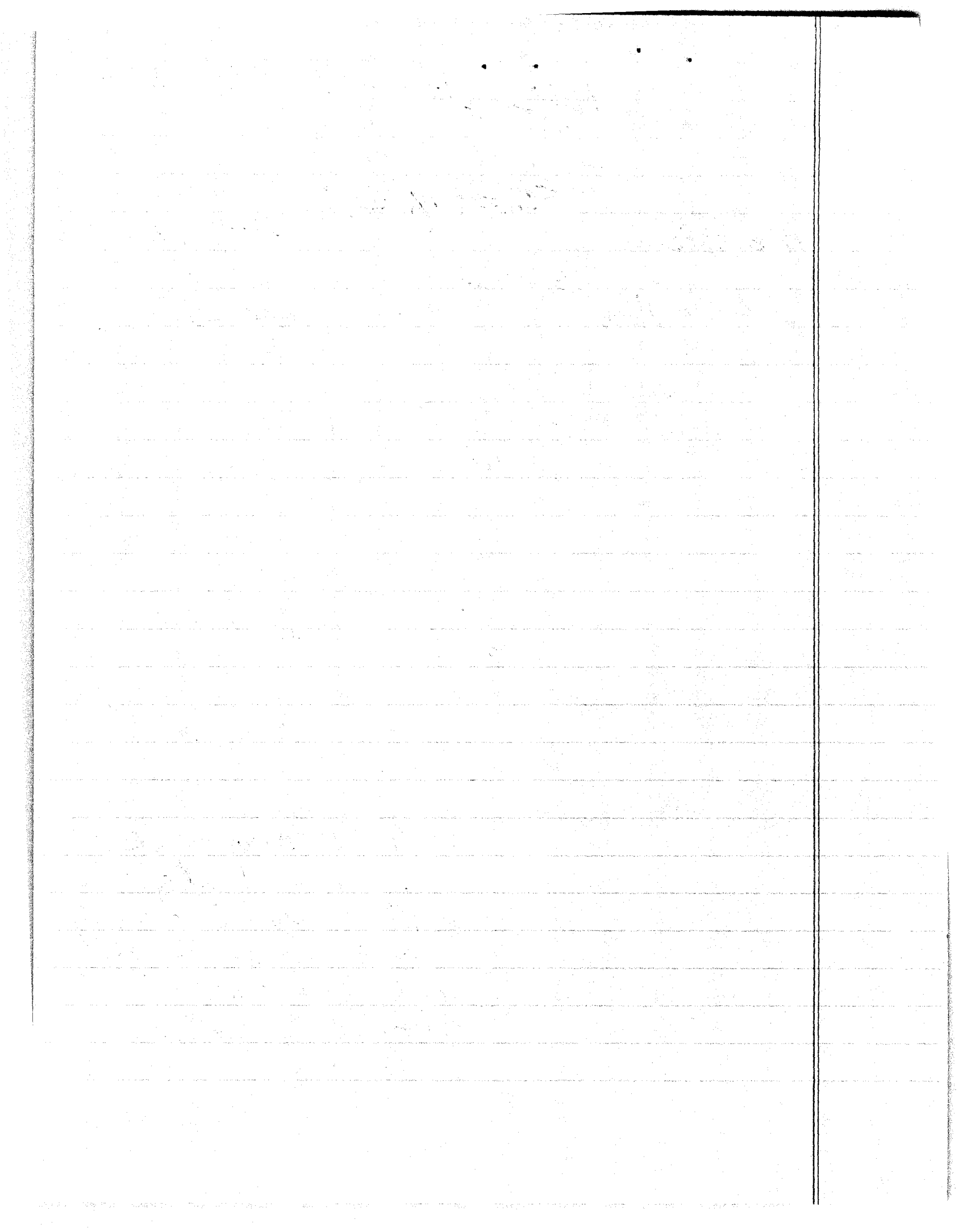
3/20
called
4 learn
message

Greg Germaine (Prof)
Oral Sci
17-252 MOOS
4-0478
germa001@maroon

Jill Stoltenberg (Assoc Prof)
Preventative Sci
9-436 MOOS
5-5651
stolt001@maroon

OK

Meet next week
probably 1 mtg -
plus email followup
- send out notice along
with the AHC - fac
Assembly Constituti-



School of Public Health

Jean Forester - Epidemiology

Deb Swackhammer - Environmental Health

Brad Carlin - Biostatistics

Mila Aroskar - Health Management

Jean Forester
not listed in
directory or
on web



Deb Swackhammer (Assoc P)

Envr + Occup Hlth

Box 807 Mayo

6-0435

dswack@mail.eoh.umn.edu

fax 6-0650

Come week of March 30-3

* OK

Brad Carlin (Assoc Prof)

Biostatistics

Box 303 Mayo

4-6696

fax: 6-0660

brad@muskie.biostat.umn.edu

Mila Aroskar (Assoc P)

Hlth Mgmt + Policy

Box 97 Mayo

5-0615

arosk001@maroon

Medical School - Nominating Committee

Brian Van Ness

Mark Jenkins

Mark Rosenberg

Bruce Blazar

gone until 4-11
NO

put until March 27

Brian Van Ness (Prof)

Biochemistry
Box 206 Mayo
4-9944

fax: 6-7031

vanne001@tc.umn.edu

Marc Jenkins (Assoc P)

Microbiology
Box 196 Mayo
6-2715

marcj@lent.med.umn.edu

Called
left message
on 3/20

Mark Rosenberg (Assoc P)

Medicine
Box 736 Mayo
4-9444

rosen001@tc.umn.edu

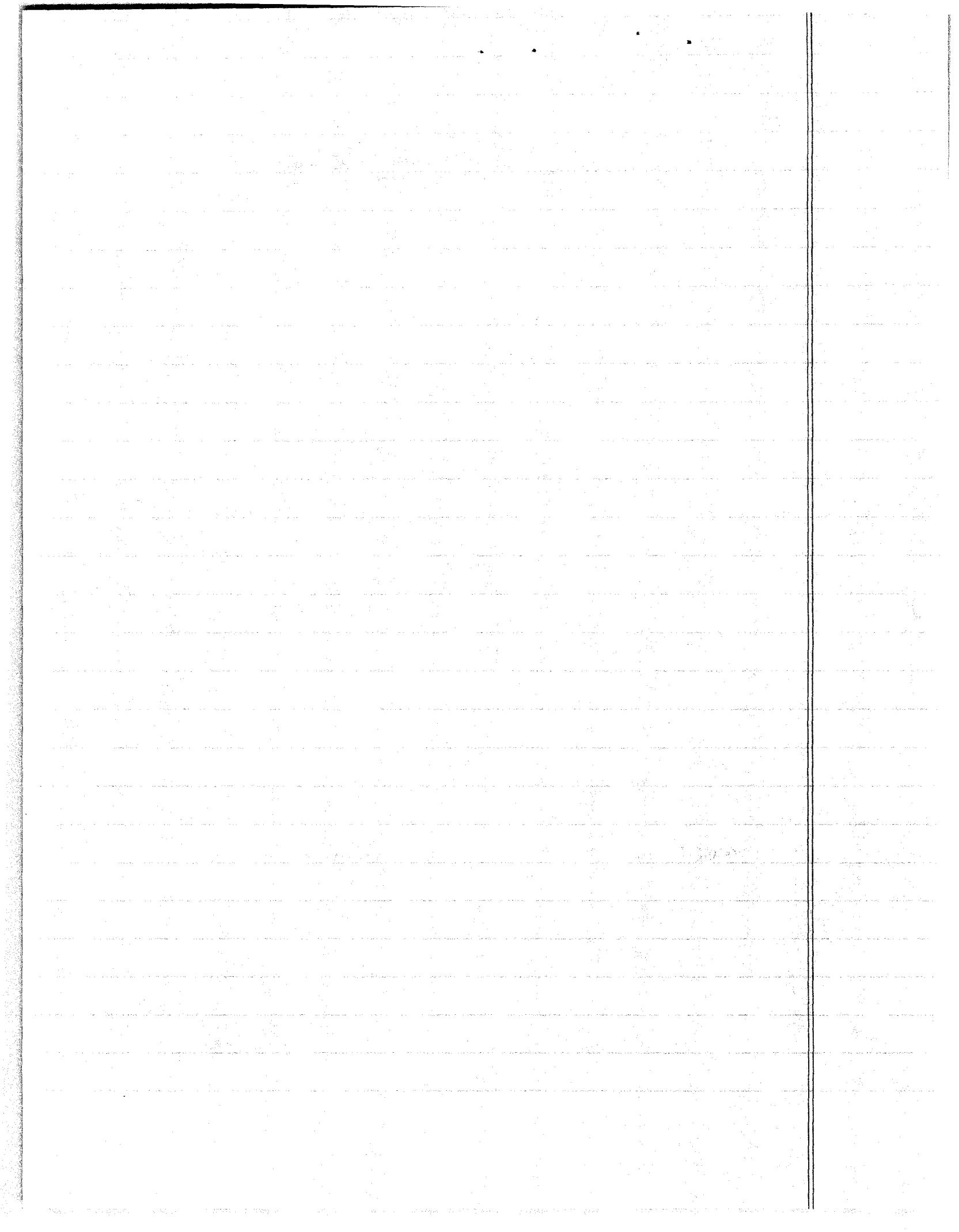
Bruce Blazar (Prof)

Pediatrics
Box 109 Mayo
6-2734

blaza001@maroon

Called
left message
3/20
Response NO
3/20

~~OK~~



Nominating Committee

Nursing (from Sheila Corcoran-Perry)

Donna Brauer
Laura Duckett
Betty Lia-Hoagberg

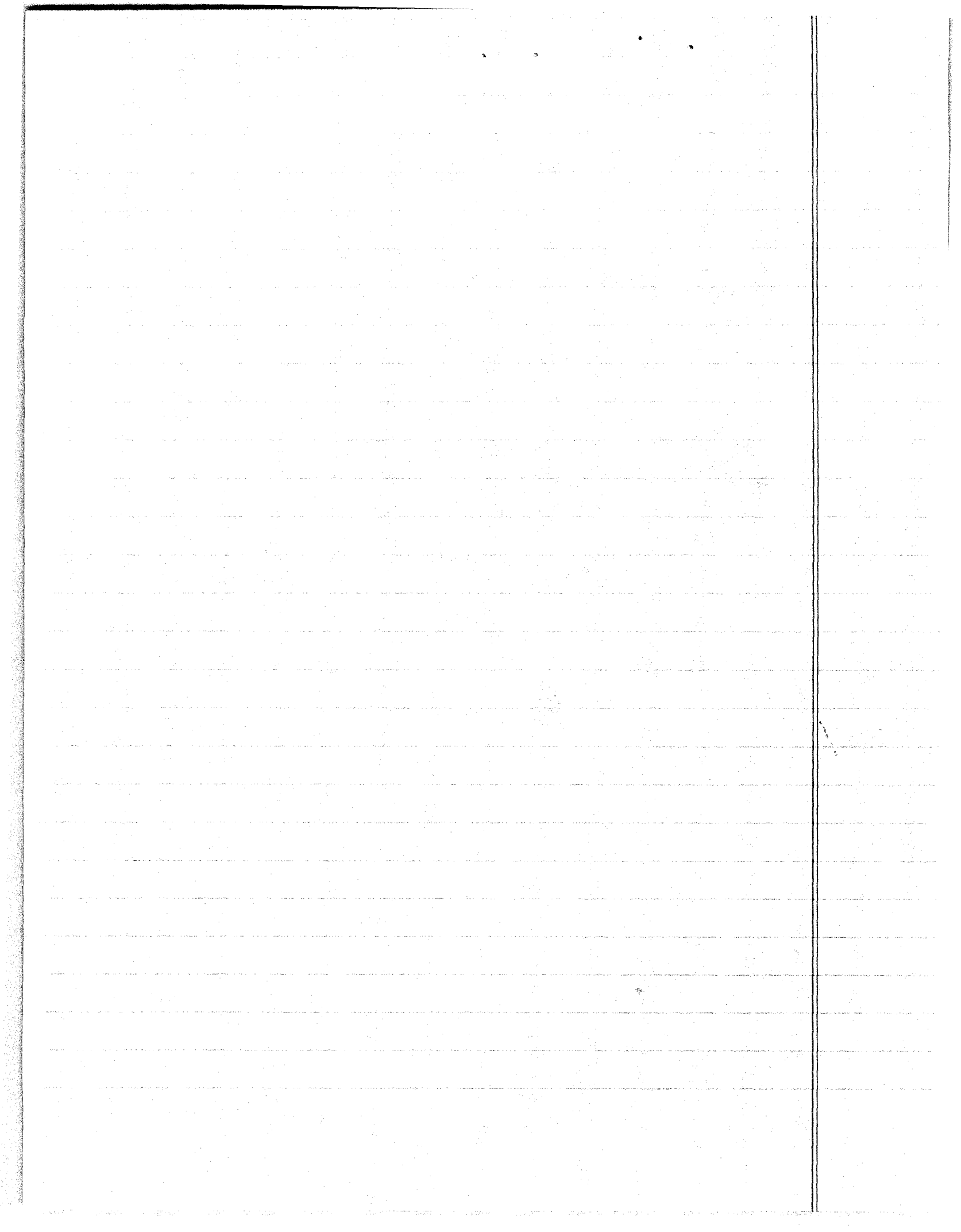
Called
set + memo
4-4-78
OK

Donna Brauer (Asst P)
Nursing
6-101 Weaver-Densford
4-1100
braue002@maroon

Laura Duckett (Assoc P)
Nursing
6-101 weav/Dens
4-9160
fax 6-2359
ducke001@maroon.

~~to appt committee to committees~~
meet soon

Betty Lia-Hoagberg (ASSOC P)
Nursing
6-101 weav/Dens
4-6924
liabo001@maroon



Secure as Committee or Committees

Pharmacy

Thomas Shier

Rory Rimmel (Assoc P)
Pharmacy
8-174 weav/Dens
4-0472
remme001@maroon.

Ron Hadsall
Courtney Fletcher
Marybeth O'Connell
Rory Rimmel

Thomas Shier (Prof)
Pharmacy
8-168 weav/Dens
4-9465
fax: 4-2974
shier001@maroon

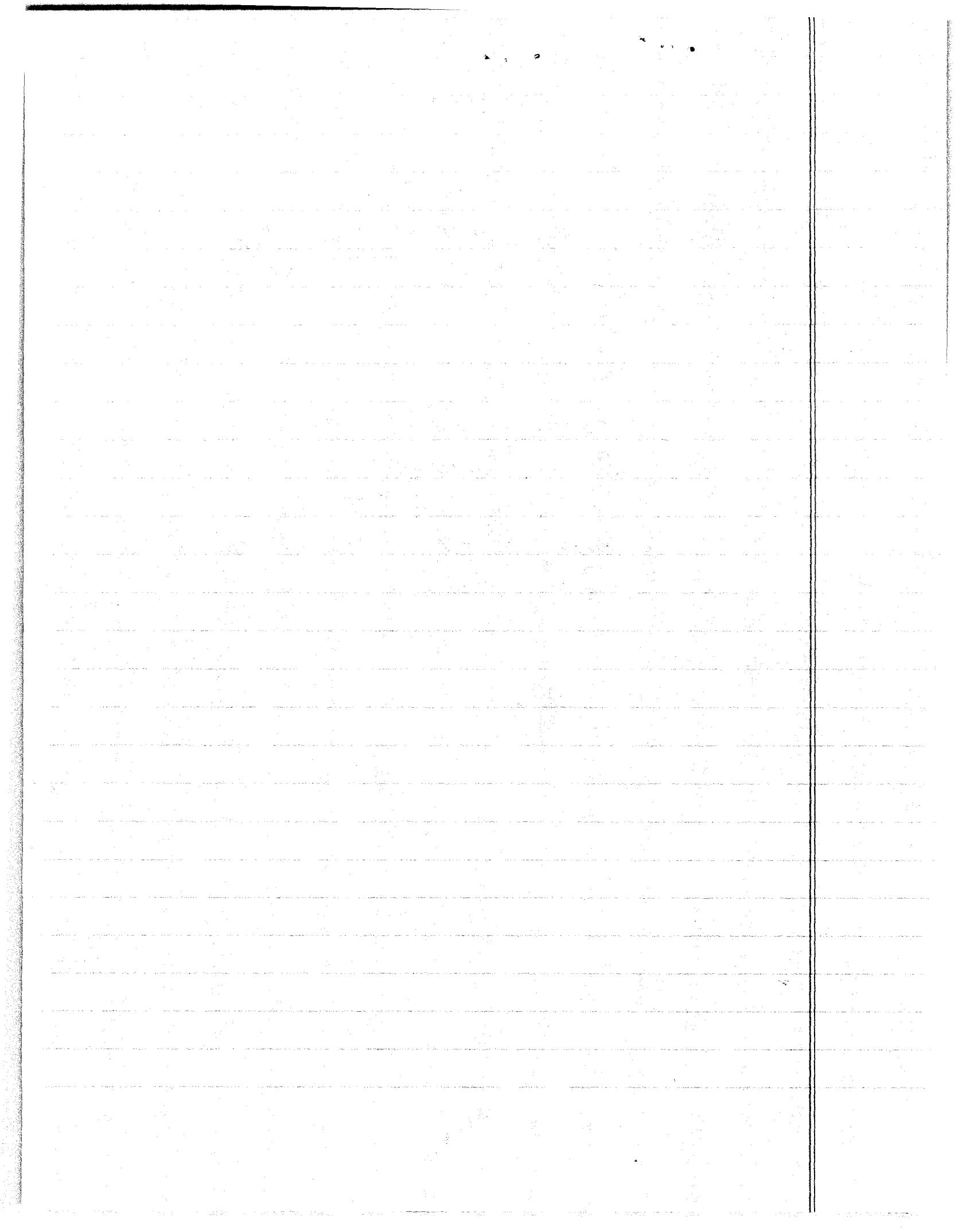
Ron Hadsall (Assoc P)
Pharmacy
7-115 weav/Dens
4-2487
fax: 5-9931
hadsa001@maroon.

Courtney Fletcher (PhA)
Pharmacy
7-151 weav/Dens
4-6489
fletc001@maroon

Marybeth O'Connell (Assoc P)
Pharmacy
7-107 weav/Dens
4-2172
fax: 337-7142
oconn010@maroon

Called
see +
message
on 3/20

OK



Received: from mhub2.tc.umn.edu ([128.101.131.52])
by mailbox.mail.umn.edu (8.8.5/8.8.5) with SMTP id IAA10230
for <courtney@mailbox.mail.umn.edu>; Thu, 19 Mar 1998 08:17:52 -0600 (CS
Received: from maroon.tc.umn.edu by mhub2.tc.umn.edu; Thu, 19 Mar 98 08:08:30 -0
Received: from x120-53.cvm.umn.edu by maroon.tc.umn.edu; Thu, 19 Mar 98 08:08:30
From: "Daniel A. Feeney" <feene001@maroon.tc.umn.edu>
To: courtney@mailbox.mail.umn.edu
Cc: Jim Waddell <wadde001@tc.umn.edu>,
Bert E Stromberg Jr <b-stro@maroon.tc.umn.edu>,
Jody P Lulich <lulic001@maroon.tc.umn.edu>
Subject: Re: Names for a nominating committee
Message-Id: <351126de4766418@mhub2.tc.umn.edu>
Date: Thu, 19 Mar 98 08:08:32 -0600

Vickie,

out until March 30
My suggestions are Bert Stromberg, Jody Lulich, and Jim Waddell. I don't know whether these people will serve, if asked, but they are all faculty-oriented individuals who know what is going on in our College. I'm sending them a "cc" of this as a Heads-up. That way, you won't be calling comebody who is not expecting it.

Best wishes,

Dan Feeney

In message <65289.courtney@mailbox.mail.umn.edu> "Vickie Courtney" writes:

- > Hi Dan and Fred: After meeting with Frank today, I asked FCC members
- > to provide me with names of individuals in your area that may be
- > interested in serving on a nominating committee to select members for
- > an AHC Committee on Committees. This slate of names (for the C on C)
- > will go before the AHC Faculty Assembly on April 13 for approval.
- >
- > Would you please give me at least 3 names of individuals I could
- > contact to see if they would be interested in serving on the
- > nominating committee. The time commitment is minimal and their job
- > will be done before the April 13 meeting.
- >
- > Thanks.

Daniel A. Feeney
408 Veterinary Teaching Hospital
University of Minnesota, St. Paul Campus
1365 Gortner Ave
St. Paul, MN 55108
(612) 625-9731 (phone and voice mail)
(612) 624-0751 (Fax)
(612) 538-4487 (pager)
feene001@tc.umn.edu (e-mail)

will call back + get me from
Jim Waddell (Prof)
Cln + Pop Sci
385 An Sci / Vet Med
5-3118
fax: 5-1210
wadde001@tc.umn.edu

Bert Stromberg (Prof)

Vet Patho

205 Vet Sci

5-7008

b-stro@maroon

Jody Lulich (Assoc P)

SACs

C346 Vet Tch Hosp

5-7277 5-7277

lulic001@maroon

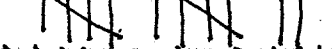
*Called set message on 3/20
clad 3/25*

NO

AHC ConC Election

(Total ballots received: 30)

Med-Clinical

Bantle:  = 12

Berry:  = 15

Med-Basic:

Wagensteen:  = 16

Wylie:  = 10

Dentistry

Holtan:  = 1

Speidel:  = 16

Nursing

Feldman:  = 8


Tomlinson:  = 12

Here are the tallies, in case you're interested.

- Anya

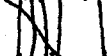
Pharmacy

Abul-Hajj:  = 8

Shier:  = 11

Duluth

Huntley:  = 11

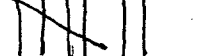
Lukasew:  = 6

Public Health:

Aroskar:  = 11

Kralewski:  = 10

Vet Med

Lipowitz:  = 7

Robinson:  = 10

ACADEMIC HEALTH CENTER UNIVERSITY SENATE MEMBERS, 1992-PRESENT

* = academic professional

A

Abrams, Jerome	Med	97-99
Abul-Hajj, Yusuf	Pharm	94-98
Aroskar, Mila	Pub Hlth	91-92,95-97

B

Bache, Robert	Med	93-96
Bantle, John	Med	93-94, 95-98
Bebeau, Muriel	Dentistry	93-96
Beebe, David	Med	93-96
Berry, Susan	Med	97-00
Bitterman, Peter	Med	91-94, 95-98
Bland, Carole	Med	91-94, 95-98
Bloomer, Joseph R.	Med	92-95
Bodley, James	Med	95-97
Bolman, Morton	Med	94-96
Brown, David	Med	94-97
Buchwald, Henry	Med	93-96
Bull, Margaret	Nursing	96-97
Burke, Barbara	Med	94-95
Burns, Kenneth	Nursing	94-95

C

Canafax, Daniel	Pharm	91-94
Caplan, Arthur	Med	92-95
Cerra, Frank	Med	91-94
Conklin, Kathleen	Med	97-00
Connett, John	Pub Hlth	92-95
Corcoran-Perry, Sheila	Nursing	92-96
Crisham, Patricia	Nursing	90-93

D

Deinard, Amos	Med	94-97
Delaney, John	Med	89-94, 95-98
Dempsey, Mary	Med	93-96, 97-00
Dunn, David L.	Med	92-95
Dusenbery, Kathryn	Med	95-98
Dworkin, Martin	Med	92-95, 96-99

E

Ebner, Timothy	Med	95-98
Erlandson, Stanley	Med	96-99

F

Faras, Anthony	Med	96-99
Feeney, Daniel	Vet Med	91-94, 95-98
Feigal, Robert	Dentistry	90-93
Feldman, Bernie	Nursing	96-99
Ferrieri, Patricia	Med	93-96
Filipovich, Alexandra	Med	94-96
Forster, Jean	Pub Hlth	95-98
Francis, Gary	Med	93-95

G

Garrard, Judith	Pub Hlth	91-95
Giebink, G. Scott	Med	93-96
Gross, Cynthia	Pharm	93-96

H

Hamilton, David	Med	90-93, 96-99
Hammerschmidt, Dale	Med	90-93
Heros, Roberto	Med	93-94
Hertz, Marshall	Med	93-94, 97-00
Holtan, James	Dentistry	92-94
Hostetter, Margaret	Med	92-95, 96-99
House, James	Med	91-94
Hunter, David	Med	95-98

I

Ingbar, David	Med	95-98
---------------	-----	-------

J

K

Kane, Robert	Pub Hlth	92-95
Kaplan, Edward L.	Med	92-95
Karni, Karen R.	Med	92-95
Kennedy, William	Med	94-97
Kersey, John	Med	93-94
Kralewski, John	Pub Hlth	97-00

L

Lewis, Marsha	Nursing	93-96
Linck, Richard	Med	97-00
Lipowitz, Alan	Vet Med	90-93
Livingston, Dennis	Med	97-00
Lulich, Jody	Vet Med	94-97

M

Mackenzie, Thomas	Med	93-96
Mariash, Cary	Med	94-97
Maxwell, Robert	Med	94-97
McKeever, Patrick	Vet Med	92-95, 97-00
Mescher, Matthew	Med	98-00
Moller, James	Med	91-94
Murray, David	Pub Hlth	96-99

N

Nagaraja, Kakambi	Vet Med	94-98
Nystrom, Gene	Dentistry	94-97

O

Oegema, Theodore	Med	89-92, 96-99
Orr, Harry	Med	96-99
Osborn, Joy	Dentistry	92-94

P

Perry, Chery	Pub Hlth	93-96
Porter, Mary	Med	97-00
Purple, Richard	Med	96-99

Q

Quie, Paul	Med	91-94, 95-98
------------	-----	--------------

R

Ramsay, Norma	Med	97-00
Ranum, Laura	Med	97-00
Rhame, Frank	Med	94-95
Rhodus, Nelson	Dentistry	93-96
Robertson, R. Paul	Med	90-93
Robinson, Elaine	Vet Med	92-95

S

Schlotthauer, John	Vet Med	90-93
Seybold, Virginia S.	Med	92-95
Shapiro, Burton	Dentistry	90-93
Shier, Thomas	Pharm	90-93
Shumway, Sara	Med	94-97
Sivanandan, V.	Vet Med	93-96
Snover, Dale	Med	93-95
Sparber, Sheldon	Med	92-95
Speidel, Thomas	Dentistry	94-00
Steffes, Michael	Med	91-97
Stromberg, Bert	Vet Med	95-98

T

Takemori, Akira	Med	93-96
Thompson, Theodore	Med	90-93
Tomlinson, Patricia	Nursing	97-99
Towle, Howard	Med	90-93, 97-00

UVW

Wagenaar, Alexander	Pub Hlth	95-98
Wangensteen, Douglas	Med	90-93, 94-97
Watson, Kathleen	Med	96-97
Weckwerth, Vernon	Pub Hlth	92-95
Wells, Carol	Med	97-99
White, James	Med	90-93
Wiedmann, Timothy	Pharm	94-00
Williams, Carolyn	Pub Hlth	90-93
Wirtschaftler, Jonathan	Med	90-93
Wylie, Christopher	Med	97-00

XYZ

ACADEMIC HEALTH CENTER UNIVERSITY SENATE MEMBERS, 1992-PRESENT

* = academic professional

A

Abrams, Jerome	Med	97-99
Abul-Hajj, Yusuf	Pharm	94-98
Aroskar, Mila	Pub Hlth	91-92,95-97

B

Bache, Robert	Med	93-96
Bantle, John	Med	93-94, 95-98
Bebeau, Muriel	Dentistry	93-96
Beebe, David	Med	93-96
Berry, Susan	Med	97-00
Bitterman, Peter	Med	91-94, 95-98
Bland, Carole	Med	91-94, 95-98
Bloomer, Joseph R.	Med	92-95
Bodley, James	Med	95-97
Bolman, Morton	Med	94-96
Brown, David	Med	94-97
Buchwald, Henry	Med	93-96
Bull, Margaret	Nursing	96-97
Burke, Barbara	Med	94-95
Burns, Kenneth	Nursing	94-95

C

Canafax, Daniel	Pharm	91-94
Caplan, Arthur	Med	92-95
Cerra, Frank	Med	91-94
Conklin, Kathleen	Med	97-00
Connett, John	Pub Hlth	92-95
Corcoran-Perry, Sheila	Nursing	92-96
Crisham, Patricia	Nursing	90-93

D

Deinard, Amos	Med	94-97
Delaney, John	Med	89-94, 95-98
Dempsey, Mary	Med	93-96, 97-00
Dunn, David L.	Med	92-95
Dusenbery, Kathryn	Med	95-98
Dworkin, Martin	Med	92-95, 96-99

E

Ebner, Timothy	Med	95-98
Erlandson, Stanley	Med	96-99

F

Faras, Anthony	Med	96-99
Feeney, Daniel	Vet Med	91-94, 95-98
Feigal, Robert	Dentistry	90-93
Feldman, Bernie	Nursing	96-99
Ferrieri, Patricia	Med	93-96
Filipovich, Alexandra	Med	94-96
Forster, Jean	Pub Hlth	95-98
Francis, Gary	Med	93-95

G

Garrard, Judith	Pub Hlth	91-95
Giebink, G. Scott	Med	93-96
Gross, Cynthia	Pharm	93-96

H

Hamilton, David	Med	90-93, 96-99
Hammerschmidt, Dale	Med	90-93
Heros, Roberto	Med	93-94
Hertz, Marshall	Med	93-94, 97-00
Holtan, James	Dentistry	92-94
Hostetter, Margaret	Med	92-95, 96-99
House, James	Med	91-94
Hunter, David	Med	95-98

I

Ingbar, David	Med	95-98
---------------	-----	-------

J

K

Kane, Robert	Pub Hlth	92-95
Kaplan, Edward L.	Med	92-95
Karni, Karen R.	Med	92-95
Kennedy, William	Med	94-97
Kersey, John	Med	93-94
Kralewski, John	Pub Hlth	97-00

L

Lewis, Marsha	Nursing	93-96
Linck, Richard	Med	97-00
Lipowitz, Alan	Vet Med	90-93
Livingston, Dennis	Med	97-00
Lulich, Jody	Vet Med	94-97

M

Mackenzie, Thomas	Med	93-96
Mariash, Cary	Med	94-97
Maxwell, Robert	Med	94-97
McKeever, Patrick	Vet Med	92-95, 97-00
Mescher, Matthew	Med	98-00
Moller, James	Med	91-94
Murray, David	Pub Hlth	96-99

N

Nagaraja, Kakambi	Vet Med	94-98
Nystrom, Gene	Dentistry	94-97

O

Oegema, Theodore	Med	89-92, 96-99
Orr, Harry	Med	96-99
Osborn, Joy	Dentistry	92-94

P

Perry, Chery	Pub Hlth	93-96
Porter, Mary	Med	97-00
Purple, Richard	Med	96-99

Q

Quie, Paul	Med	91-94, 95-98
------------	-----	--------------

R

Ramsay, Norma	Med	97-00
Ranum, Laura	Med	97-00
Rhame, Frank	Med	94-95
Rhodus, Nelson	Dentistry	93-96
Robertson, R. Paul	Med	90-93
Robinson, Elaine	Vet Med	92-95

S

Schlotthauer, John	Vet Med	90-93
Seybold, Virginia S.	Med	92-95
Shapiro, Burton	Dentistry	90-93
Shier, Thomas	Pharm	90-93
Shumway, Sara	Med	94-97
Sivanandan, V.	Vet Med	93-96
Snover, Dale	Med	93-95
Sparber, Sheldon	Med	92-95
Speidel, Thomas	Dentistry	94-00
Steffes, Michael	Med	91-97
Stromberg, Bert	Vet Med	95-98

T

Takemori, Akira	Med	93-96
Thompson, Theodore	Med	90-93
Tomlinson, Patricia	Nursing	97-99
Towle, Howard	Med	90-93, 97-00

UVW

Wagenaar, Alexander	Pub Hlth	95-98
Wangensteen, Douglas	Med	90-93, 94-97
Watson, Kathleen	Med	96-97
Weckwerth, Vernon	Pub Hlth	92-95
Wells, Carol	Med	97-99
White, James	Med	90-93
Wiedmann, Timothy	Pharm	94-00
Williams, Carolyn	Pub Hlth	90-93
Wirtschafter, Jonathan	Med	90-93
Wylie, Christopher	Med	97-00

XYZ

*Amya:
Do you
have this?*

UNIVERSITY OF MINNESOTA SCHOOL OF NURSING

Fax Cover Sheet

Date: 11-3-98

To: Vicki Courtney

Fax number: ~~624-0515~~ 626-1609

From: Laura Duckett

Phone number: 624-9160

Fax number: 612/626-2359

Number of pages (including this one): 2

Message:

Established in 1909, the School of Nursing at the University of Minnesota holds the distinction of being the first nursing program on a university campus.

The Ph.D. program is research-oriented and is designed to prepare creative and productive scholars in nursing.

The Ph.D. program offers opportunity for study in:

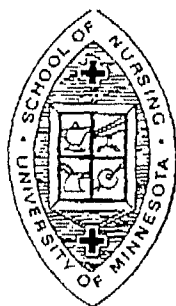
- ◆ *Development and modification of health-related behaviors*
- ◆ *Human responses to environmental and life process events disruptive to health*
- ◆ *Phenomenon of health*
- ◆ *Organization and system of delivery of nursing care and nursing knowledge*

The Graduate School offers the Master of Science degree with a major in nursing under two plans: Plan A - thesis & Plan B - course work and special project.

The M.S. program offers:

- ◆ *Adolescent Nursing*
- ◆ *Adult Health Nursing*
- ◆ *Child and Family Nursing*
- ◆ *Children with Special Health-Care Needs Nurse Practitioner*
- ◆ *Family Nurse Practitioner*
- ◆ *Gerontological Clinical Nurse Specialist*
- ◆ *Gerontological Nurse Practitioner*
- ◆ *Nursing Administration*
- ◆ *Nursing Education*
- ◆ *Nurse Midwifery*
- ◆ *Oncology Nursing*
- ◆ *Pediatric Nurse Practitioner*
- ◆ *Psychiatric-Mental Health Nursing*
- ◆ *Public Health Nursing*
- ◆ *Public Health Nursing Administration*
- ◆ *School Nursing*
- ◆ *Women's Health Care Nurse Practitioner*

The baccalaureate program is a two-year upper-division major admitting students who have completed 90 credits of transferable prerequisites and liberal arts credits.



University of Minnesota
School of Nursing
6-101 Unit F
308 Harvard Street Southeast
Minneapolis, MN 55455
612/624-9600
Outreach office: 626-4330

UNIVERSITY OF MINNESOTA

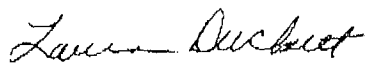
*Twin Cities Campus**School of Nursing**6-101 Weaver-Densford Hall
308 Harvard Street S.E.
Minneapolis, MN 55455-0342*

November 3, 1998

*612-624-9600
Fax: 612-626-2359*Vicki Courtney
AHC Senate Office

I am nominating Dr. Kathleen Krichbaum for the position on the Provostial Faculty Consultative Committee to represent the School of Nursing. Dr. Krichbaum is an Associate Professor and has served for the past and current year as the Chair of our faculty group, the General Assembly. Last year, she served on two AHC research review committees—one to review the technology grant applications, and the other to review AHC multidisciplinary research grants. In addition, she served on a graduate school task force to recommend a policy change for distance education in graduate offerings. She brings experience in multidisciplinary collaboration as well as leadership and organizational skill to the position. Please place her name in nomination.

Sincerely,

Dr. Laura Duckett, RN, PhD
Chair, Consultative Committee
School of Nursing

From: Bernadine Feldman
To: courtney@mailbox.mail.umn.edu
CC:
Subject: RE: nomination for AHCFcc
Date: Thu, 8 Oct 1998 09:58:34

Nominators Name Self

Nominee's Name Bernadine M. Feldman

Rank Associate Professor

Department Not relevant School of Nursing does not have departments.

College School of Nursing

Service and Qualifications

Have been a part of the University Governance System for many years committee membership has included Senate committee on academic standing, All University Committee on Planning, Committee for review of Human Subject in Research, Student Affairs Committee - Including the Chair and University Health Services Committee Including 2 Years as Chair. Currently serving as the School of Nursing Senator, Member of the AHC Assembly and member of the AHC Faculty Affairs subcommittee. In the School of Nursing have served on most committees in the School, most recently as member and Chair of the Faculty Consultative committee, Chair of the Tenured Faculty, Chair of the Graduate Faculty, Member and Chair of the Faculty Evaluation Committee (Promotion and Tenure) to name a few. I do believe these experiences contribute to my knowledge of the University overall and to the role and function of Faculty Governance within the University Community.

Bernadine Feldman Ph.D.

School of Nursing

6-101 Unit F, 308 Harvard St. SE, Minneapolis, MN 55455

Office: 612/624-7956 Fax: 612/626-2359

e-mail feldm001@maroon.tc.umn.edu

UNIVERSITY OF MINNESOTA

Twin Cities Campus

*Department of Medicine
Nesbitt Professor and Chairman
Medical School*

*14-110 Phillips-Wangensteen Building
516 Delaware Street S.E.
Minneapolis, MN 55455
612-625-4162
Fax: 612-626-3055
<http://www.med.umn.edu/medicine>*

October 2, 1998

Senate Office
ATT: Vickie Courtney
427 Morrill Hall

RE: Nomination to the AHC Faculty Consultative Committee

To the Nominating Committee:

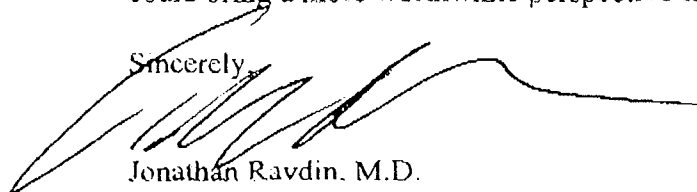
The Department of Medicine is pleased to nominate Dr. Philip McGlave for consideration of election to the Academic Health Center Faculty Consultative Committee.

Dr. McGlave is Division Director of Hematology-Oncology in the Department of Medicine and Associate Director for Experimental Therapeutics in the Cancer Center. Dr. McGlave has been a University of Minnesota faculty member for approximately 20 years and now heads a group of over twenty faculty, with a large clinical practice and over \$7 million in NIH funding. He has substantial leadership experience in the Bone Marrow Transplant Program and in numerous other faculty venues. Dr. McGlave has a remarkably valuable and wise perspective on where the University of Minnesota needs to focus its energies to sustain its position as one of the top-ranked Medical Schools in the U.S. He also has a keen insight into faculty affairs.

Dr. McGlave is an excellent researcher, being a Principal Investigator in a Program Project Grant on bone marrow transplantation. He has been involved with developing, in collaboration with Dr. Normal Ramsay, one of the most successful bone marrow programs in the United States, which has huge financial and academic value to the Academic Health Center.

In summary, I could not think of an individual more meritorious of election and who could bring a more worthwhile perspective to this Committee.

Sincerely,



Jonathan Ravdin, M.D.
Nesbitt Professor and Chair

c: Dean Alfred Michael

rccltr.mcglavep.AHCfaculty.comml/jp

UNIVERSITY OF MINNESOTA

Twin Cities Campus

*Division of Epidemiology
School of Public Health*

*Suite 300
1300 South Second Street
Minneapolis, MN 55454-1015
612-624-1818
Fax: 612-624-0315*

September 25, 1998

Vicki Courtney
Senate Office
427 Morrill Hall
100 Church Street SE
Minneapolis, MN

Nominators name: Russell V. Luepker, MD

Nominees name: Donna K. Arnett, PhD

Rank: Associate Professor

Department: Division of Epidemiology

College: Public Health

Career service and qualifications: Professor Arnett has served in a variety of roles in the administration of the Division and School. Most recently, she has been very effective as Chair of the School's Faculty Consultative Committee. She is thoughtful and has a broad view of the issues of the Academic Health Center. I believe she will make an excellent representative on the AHC FCC. She has energy, enthusiasm and innovative ideas about the University and the AHC.

RVL/jmb