

AURORA SPOREALIS ^{dup}

PLANT. PATHOLOGY, LIBRARY

PLANT PATHOLOGY
304 STAKMAN HALL
1519 GORTNER AVE.
ST. PAUL, MINNESOTA 55108



June 1980

Department of Plant Pathology
University of Minnesota St. Paul, Minnesota

REPORT FROM THE HEAD

The Minnesota Legislature did not pass the appropriation bill which contained, among other major items, the funds for our new building. It was not lack of support for our building, but rather a problem of the two parties not being able to agree on various parts of the bill. We are optimistic that our building will be funded in the next legislative session and that the inflation factor will be added. A great many people worked in our behalf on our building request and we are deeply grateful for their support.

While waiting for the next legislative session, the planning process will continue and should be completed in the reasonably near future. We are pleased with that part of the building designed for Plant Pathology although some features have been eliminated because of the current high costs of construction. We believe the new library will be a major feature with adequate space for the books and more space for users. Some questions have been raised about our planning for a library especially in view of the new addition to the main St. Paul Campus Library. Our faculty is unanimous in their opinion that the Department library is a key facility. Our alumni have indicated that they think having a Department library was important. The Director of the St. Paul Campus Library system, Richard Rohrer, is very pleased that we have planned for this new library and has indicated that even with the added space in the main Library, it will not have room to accommodate the books in the Plant Pathology library.

We are also excited about the prospect of having new teaching facilities which will be far better designed to accommodate the students and be located so it will not be necessary for them to walk all through our present building. We will not be adding some much needed space for growth chambers and similar facilities. The new building will have limited space for such facilities and it is hoped that subsequently we will be part of a request which will provide greenhouses and headhouse space which can accommodate growth chambers.

The new building will greatly improve our circumstances and provide us with far better space and ample room for some time into the future and we hope the 1981 Legislature which will have many new people will approve the necessary funds.

Periodically in the past the curriculum in Plant Pathology has been reviewed and revised. The changes have really been minor adjustments. In 1980 our Teaching Committee, with Jim Percich as Chairman, is considering a major revision. The Committee has been at the task for several months and will have the new curriculum ready for faculty consideration this fall. We know that good teaching is dependent on good teachers, but a better designed curriculum may allow good teaching to be more effective.

Although you have received publicity about the E.C. Stakman Crop Loss Assessment Symposium, we did want to again call your attention to this important event. The Symposium is sponsored by the Minnesota Environmental Quality Board and we owe our appreciation to Dave Lang for this arrangement. The Symposium was arranged by a committee under the guidance of Paul Teng who joined our faculty in early 1979. As a result of Paul's interests and background, the Department will be developing research and teaching in both epidemiology and crop loss assessment.

The Department is pleased with the two other new members of our faculty. Jim Baumer joined us in June of 1979 and although his assignment was to be wheat diseases, we have imposed on him to accept, on a 25% basis, sunflower diseases as well. This Department had to respond to this need as sunflower acreage has increased rapidly and the diseases have not only kept pace, but seem to be increasing more rapidly than the acreage devoted to the crops. Already in 1980 we have

(ii)

witnessed entire fields of sunflowers failing and the cause is not yet determined. Thus, Jim will be well occupied.

Bob Blanchette joined the Department in February of this year and will be our forest pathologist. Bob received his PhD degree from Washington State. He taught the Forest Pathology course this spring and is completely involved in the research programs. For a number of reasons, the program had increased in magnitude and Bob will be busy managing the various research efforts. To facilitate matters in Forest Pathology and keep our forest products deterioration efforts underway, we have retained Elmer Schmidt on a post doctoral appointment to teach the deterioration course and continue our research in this area.

The Department will experience a significant change on July 1 when Clyde Christensen leaves for his new home in Arizona. We will all miss him greatly. I know I will after our long association. I guess we had assumed that Clyde would never leave St. Paul. In fact, I was quite certain that he would not want to leave his home here. Although Clyde retired in June, 1974, he continued to carry on the grain storage research program. The Department must now find a person to continue the work in this area which he pioneered and carried on these past many years. Grain storage problems are still with us and with the wet fall of 1979 were more prevalent than ever. Also, the grain storage program is closely associated with mycotoxicology. When Clyde retired his salary item was used to hire a pathologist with responsibilities in a different field and we now have no funds to hire a person in Clyde's place. It is on our wish list, but new positions are going to be difficult to obtain. We hope Clyde and Katie will enjoy their new home in Sun City West, Arizona.

In spite of our Graduate School's antiquated snail-paced procedures for handling graduate student applications, we are doing all in our power to expedite the process. In recent years and for some time, we have been losing students to other universities that can deal very directly with prospects. We appreciate our graduates recommending Minnesota to students interested in advanced degrees and hope we are responding promptly. Graduate students are a very important part of the Department and their successes are the Department's.

We now have new directors of both our Experiment Station and Extension Service. Dr. Dick Sauer, an entomologist, became Director of the Experiment Station earlier this year. He came from Kansas State where he was the Head of the Department of Entomology. Before that he was with Michigan State University. He is a native of Minnesota from the Walker area. We have been impressed with his ability to quickly grasp the complexities of his position. We look forward to working with him. Dr. Norman Brown also arrive early this year and he came from Michigan State where he had considerable experience in all aspects of Extension. Norm has been occupied thus far in becoming acquainted with all the outstate people who are an important part of Extension programs. He promises to be an excellent Director.

Although no procedure has been established, we will in some reasonable method give away Stak's pipes of which he had an unbelievable number. They haven't been counted. If any of our Old Timers would like to have one of his pipes, or would like to suggest how best to proceed, we would appreciate your ideas. We also will have some of his books to give away. We have indicated to some Departments of Plant Pathology that we could provide one of Stak's books for their library.

We hope to see many of you at the upcoming Phytopath meeting in August. Although we have not planned a hospitality room, the Department will be open to visitors all week and we will have an open house, Tuesday, August 26, 6:00 - 9:30 PM. We hope you will have time to visit us.

OLD TIMERS COLUMN

A.P. Misra, PhD 1947, gave a talk on variability in grammicolus Helminthosporia as his presidential address at the annual meeting of the Indian Phytopathological Society, Baroda Farm, February 12-14, 1979. Dr. Misra is Emeritus Scientist, ICAR, and Retired Principal and Dean, Rajendra Agricultural University, Bihar Campus T.C.A., Dholi. Dr. Misra and Dr. P.P. Mehta, PhD 1949, participated in a special observance of Stakman Day, May 17, 1979, at R.A.U., Bihar.

Julia Guzman, PhD 1961, retired recently from her position at Centro Internacional de Papas in Lima, where she was Principal Scientist, working on late blight. Julia writes that she has been doing volunteer work with the YWCA in Bogota, and expects to go to Geneva to take a training course for staff members.

Peter Wilde, who studied in the Department in 1957-58, writes, December 24, "I send you my greetings and best wishes for a happy and successful New Year! I thank you for the Aurora Sporealis which keeps me informed about the best place of former studies, even if not all is right that is printed there. In October '78 I was not in Munich. (If I had been there, I would have been to the St. Paul meeting as sure as hell!!!) I could not come to Munich (Munchen) as the weather was so bad that year that the vegetation period was delayed and I had to have two experiments at the time of the meeting. You see, practical plant pathology sometimes interferes with the theoretical. I am now alone in my business and I hope now after three years of independent business to get to the 'break-even point' as the economists used to say." Peter is the proprietor of Farm Research, Obere Fluh 6, D-7880, Sackingen, Germany.

Dereji Ashagari, PhD 1975, is now with the Ministry of State Farm Development, PO 5765, Addis Ababa, Ethiopia. Dereji reports that everything is fine with him and his family which now includes two children, a boy and a girl.

Ed Christensen, MS 1958, is now located in Salinas, CA. He has been with Yoder Brothers since he left Minnesota in 1958 and is now a highly successful salesman with that company, which produces stock of chrysanthemums and other ornamentals for commercial florists.

R.H. Morrison, PhD 1972, and O.T. Marcie Roseanu Morrison and daughters will move to California this spring, where Dick will be located at the Northrup-King Research Center in Woodland (near Davis). He will be Chief Plant Pathologist in charge of vegetable and field crop diseases, with administrative responsibilities. He has been with Northrup-King in Minneapolis since 1973.

Mrs. Helen Boosalis, Mayor of Lincoln, NB, where husband Mike (PhD 1951) works for the U of N, will be president of the U.S. Conference of Mayors in 1981. Helen was elected to a second four-year term as Mayor in 1979. She served on the city council since 1959.

T.C. Loh, PhD 1933, was recently appointed Vice Director of Guang Dong Microbiology Research Institute, Guang Zhou, Peoples' Republic of China. Loh has increased the emphasis on mycology at the Institute, where they are also engaged in research on mycotoxins, enzymes, bacteriophages and nuclear transfection. The Institute employs over 200 people. Loh keeps fits by running.

Bryan Shearer, PhD 1975, has acquired a new job and a wife. The job is that of plant pathologist with the Forests Department in Western Australia, a position he assumed in May, 1979. He is located at the Research Station, Dwellingup 6213. The principal problem is the dieback of eucalyptus.

Bryan and Margaret Hennessey were married July 14, 1979. They have purchased five acres located 30 miles south of Perth, near a seaside town called Mandurah and will raise fruit trees, hens, ducks and bees. Congratulations, Bryan.

Don Stewart, PhD 1953, now lives in Tucson, AZ. He returned from North Yemen in December, 1978, after spending nearly two years there working on sorghum production and rust resistance in wheat. Just before their return to the US, Don, with Marion and Bonnie, went on a safari in the game parks of Kenya and stopped in Cairo to visit old friends. Bonnie is on the staff of the American University in Beirut.

Joe Southern, PhD 1978, is back in Minnesota as Commercial Development Technical Representative for the Diamond Shamrock Corp. Joe is located in Edina (a Minneapolis suburb) and will work with fungicide people in the universities and experiment stations in this area. He was with the Mindano Fruit Co. in the Philippines until September, 1979. From there he went to La Lima, Honduras and spent five weeks as pathologist for the Division of Tropical Research, United Brands Co. In November, he accepted his present position.

Shih-I Lu, PhD 1952, sends Merry Christmas and Happy New Year greetings to members of the Seminar. He adds, "I have missed the Seminar so much and wish that I could attend the interesting discussions again. Salud and Gesundheit!" Lu is Professor, Institute of Microbiology, Academic Sinica, Peking, Peoples' Republic of China. He reports that he is still doing some work with black lines of U. maydis.

Michael Ostry, MS 1978, has taken over the work of Art Schipper, PhD 1968, in the North Central Experiment Station, St. Paul.

Art moved to Washington, DC, January 1, 1979, where he is Staff Assistant to the Director of Forest Disease and Insect Research.

The above-mentioned Director is now Gerald Anderson, PhD 1963, formerly Assistant Director for Research at the Northeast Forest Experiment Station, Durham, NH.

The Director preceding Gerald was John Ohman, PhD 1961, who is now (since March, 1979) Deputy Chief for Research in the Forest Service.

Do you have that straight now? We hope we have....

Wm. H. Anderson, PhD 1974, is now located in Washington, DC. Bill, who has been with the National Park Service in Boston, MA, for 2½ years, will still be working for NPS -- as Chief Scientist for the National Capitol Region. He started the new job about January 1, 1980.

Stephen C. Liu, PhD 1957, has been getting newspaper publicity for research on the bacterium causing brown leaf spot of beans involving the transfer of DNA to produce more pathogenic races. Liu was also in the news as a delegate to a National Seminar for Reconstruction and Modernization of Taiwan, held last summer in Taipei. He was made Chairman of the Science and Technology Committee and Deputy Chairman of the entire Conference. The Seminar included 144 scholars representing all disciplines, many from some of the leading institutions in the US. Liu is Associate Professor in the Department of Biology, Eastern Michigan University, Ypsilanti. Before coming to Eastern in 1965, he worked for the Brazilian National Research Council, the Ford Foundation and the Charles Pfizer Company in Brazil. Several times since, he has visited the University of Sao Paulo to teach and lecture. Liu visited the Department in May, 1980, and said he was going to China again, July-December, 1980, at the invitation of the Chinese National Academy of Agricultural Sciences. He will teach a course in virology at the University.

We recently caught up with Ed Andrews, PhD 1953, who has been living in Milwaukee, WI, for the past four-five years and keeping mighty quiet.

The Chairman of the Plant Pathology Department in the Division of Tropical Research, United Brands Co., La Lima, Honduras, is Louis Palmer, PhD 1968. Louis was with the IRRRI (International Rice Research Institute) in Indonesia for four years before coming to Honduras in October, 1979.

Irvin L. Forbes, PhD 1935, underwent surgery on October 11, 1979, for the removal of a blood clot on the left side of his head near the brain. He remained unconscious until November 6, but recovered sufficiently to return home on December 17. At last report, he was improving daily.

Wm. W. Donald, MS 1974, and Better $\frac{1}{2}$, Pat, will move back to Fargo, ND, July 1, 1980. Bill has accepted a position with the USDA in the Radiation and Metabolism Lab on the NDSU campus. He worked there for the USDA for several years, but went to Ft. Collins, CO, in 1978 as Assistant Professor in Botany and Plant Pathology at CSU.

Dr. H.R. Wang, who spent a year in 1945-46 working on cereal rusts in the Department, writes that he is now investigating leaf rust of wheat. Dr. Wang is in the Department of Plant Protection, Hobei Agricultural University, Boading Hobei Province, Peoples' Republic of China.

Curt Roane, PhD 1953, and Martha, MS 1946, were in Minnesota last summer on a fishing trip near Ely with Bill Loegering, PhD 1949. If they stopped in St. Paul, the Aurora reporter missed them. Curt is President of the Eastern Wheat Workers Conference, the first plant pathologist to be so honored.

Dennis Johnson, PhD 1977, joined the Department of Plant Pathology at Washington State University in January, 1980. He will be Extension Pathologist at the Irrigated Agriculture Research and Extension Center at Prosser. Dennis was Assistant Professor of Plant Pathology at Texas A and M U. Experiment Station, Vernon, TX, since early 1977.

VISITORS

July 5. Dale Bergdahl, MS 1974, Asst. Professor, Department of Forestry, U of Vermont, was here to pass his PhD final, which he did.

July 23. Art Schipper, PhD 1968, of Washington DC. See elsewhere in this Aurora.

August 2-5. Bent Skovmand, PhD 1976, was in town. From here he went to Fort Collins, CO, to attend an agromony meeting. January 10, 1980. Bent was here again and presented a very good seminar on CIMMYT and the work he and others are doing in Mexico.

August 13. Don Knutson, USDA, Oregon State U, Corvallis.

August 13. C.S. Venkata Ram, MS 1953, stopped at Stakman Hall on his return from the meetings where he presented a paper on integrated fungicide schedules for tea. Dr. Venkata Ram is Director of Research, UPASI Tea Research Institute, Chincona, India. With him was Dr. Gundu Rau, Mysore.

August 15. Richard S. Davidson, PhD 1947, touched base on his way to Brule, WI, to fish with John Rowell. This is an annual pilgrimage.

September 10. Wilhelm Wimschneider and Mrs. Wimschneider, Germany, were on a holiday in the U.S., including Kentucky and California. They planned to visit Mexico also. Wilhelm took graduate work in the Department in 1968-69 and is now with Deutsche Shell Chemie.

September 12. Rama Urs, Dahlgren & Co., Crookston, MN. Rama was Jr. Scientist in the Department until he left on 9/12/77.

September 13-17. Kenneth Old, PhD 1964. He presented two seminars, one on dieback of Eucalyptus in Australia and another on amebae which drill holes in fungus spores and parasitize them. Ken had come from the U of California, Berkeley, where he had spent several months studying diseases of forest trees,

especially Monterey pine, which was introduced into Australia and is becoming very useful there. Ken is now forest pathologist with CSIRO in Canberra.

September 20. Wm Bridge Cook and Mrs. Cooke of Cincinnati, OH, who were returning from Alaska, stopped to visit Elwin Stewart and other Minnesota mycologists, and to look at the mycological herbarium here. Dr. Cooke contributed many exsiccata to the herbarium in years past and was pleased that Elwin was taking good care of it.

September 24 and August 31, 1980. Linda Vukelich, former Executive Secretary. Linda and family moved to Arizona for a year or so after she left here in August, 1978, but they are back again. Linda works for Toro Co.

October 1. Paul Fridlund, PhD 1954, called from the airport on his way to a technical meeting at Madison, WI. Paul is still with the USDA, producing virus-free fruit tree stock near Prosser, WA. He allows the program is highly successful, supplying 37 states and 44 foreign countries with planting stock.

October 15. Camille Lefebvre, a native of Elk River, MN, who was home to visit relatives and old friends. Cam got his BS in Plant Pathology at Minnesota, the MS and PhD at Harvard. He is remembered at Minnesota as a squad leader during the golden years of barberry eradication (see Aurora, December, 1975). He retired from the USDA about 8 years ago and moved to Sun City, AZ, last year.

October 18 and May 28, 1980. Oscar Zebisch, miscellaneous laborer from the early '40s. Oscar is now doing research with the E.I. DuPont Co. He got his PhD in agronomy.

November 2. Dr. Alan Gemmell. MS 1937, and Mrs. Gemmell spent the weekend of Nov. 2 visiting familiar and not so familiar places in the area. The Gemmells were travelling by bus, better to see the countryside, and planned to visit O.T. Ed Vaughan in Corvallis, Oregon, California and other parts of the Southwest, possibly calling on Prof. M.F. Kernkamp in Arizona. Alan was

Professor of Biology, University of Keele, Staffordshire, until his retirement a couple of years ago. Since then, he has been busy lecturing and carrying on his garden program on the radio. The program, presented jointly with two practical gardeners, has been given for about 30 years, and is very popular, according to highly reliable sources.

November 26. Virgil Jons, MS 1975, Now with APHIS, USDA, at NDSU, Fargo, ND.

November 29-30. Raoul A. Robinson, originator of the International Program on Horizontal Resistance, FAO/UN. Mr. Robinson presented two seminars on Plant Pathosystems and New concepts on Breeding Plants for Disease Resistance.

December 6. Allen S. Heagle, PhD 1968. USDA, SEA, North Carolina State Univ., Raleigh.

December 15. Dave Gardner returned to take his MS final. He stayed in Minnesota until 1-1-80, before returning to VPI and State U to continue his work toward the PhD.

December 17. Dr. John F. Fulkerson, Principal Scientist, USDA/SEA/Cr, Washington, DC. Dr. Fulkerson gave a special seminar in which he discussed some of the leading problems facing plant pathologists today. He also revealed some of the workings of the bureaucracy of which the USDA is a part.

January 8, 1980. Wade Reeves, Assistant Director & Head of Training, Ibadan, Nigeria. Dr. Reeves spoke at an informal seminar.

January 17. R. Jay Stipes, Plant Pathologist, Virginia Polytech and State U, and Richard J. Campana, Professor and Plant Pathologist, U of Maine. Drs. Stipe and Campana visited the Department after conferring with officers at the national headquarters of APS concerning the forthcoming compendium of elm diseases, of which they are editors. Dr. Campana presented an informal seminar on Dutch elm disease. Dr. Stipes is a colleague of O.T. Dr. Martha Kotila Roane, MS 1946, with whom he is writing a monograph on the genus *Ceratocystis*.

January 31. Mark Smith, PhD 1968, came to consult with the mycotoxin authorities, C.M. Christensen and C.J. Mirocha. Mark, who is Project Leader, USDA/APHIS-PPQ, has been loaned to AID for two years under a PASA agreement and will manage three AID-sponsored projects: 1. An international root-rot nematode study, at North Carolina State; 2. An integrated crop protection planning project at Purdue; and 3. An attempt to reduce aflatoxin in corn by breeding for resistance to Aspergillus flavus and toxin production.

February 27. Steven V. Beer, Associate Professor, Cornell University. Prof. Beer was on the campus to attend a horticultural conference and speak on fire blight of apples.

March 18. Monty D. Harrison, PhD 1961. Monty is Professor of Plant Pathology and Assistant Dean of the College of Agriculture, Colorado State U, Fort Collins.

March 26-28. Al Ellingboe, PhD 1957, was an invited speaker at a symposium on "Biological responses of higher plants to environmental stress" held in the Student Center on the Campus.

April 4. W.D. Thomas, PhD 1947, was here on professional business. Walt is head of his own environmental protection service, Forest-Ag, located in Lafayette, CA. Last year he presented a paper on tree injection in Vienna at a workshop for European and Mediterranean plant protection organizations.

June 5. Larry Littlefield, PhD 1964, Professor of Plant Pathology, North Dakota State U. Larry was in Egypt for three weeks during February-March, 1980, lecturing at the University of Alexandria on the anatomy of fungi. He was a guest of the Egyptian government. On his return he visited Dr. Kurt Mendgen at the University of Konstanz, in southern Germany.

Larry is taking a leave of absence for a year or two, beginning August 11, 1980, and will go to Washington, DC, to assume an administrative position with

SUMMER MEETINGS IN MINNESOTA

The American Phytopathological Society and the Canadian Phytopathological Society will hold a joint annual meeting on the West Bank Campus of the U of M, August 24-28, 1980. Dick Meronuck is Chairman of Local Arrangements and had been working with 10 committees comprising 52 committee members from the PI Pa Department. The announcement and program that appeared on May 28 looks impressive. The annual banquet will be held in the Minnesota Science Museum and includes drinks, dinner, a showing in the famous Omnitheatre and dancing. All for a lousy \$21/head. The rest of the scientific and entertainment feast looks equally tempting. Over 600 papers are scheduled and it looks like one of the biggest meetings ever held.

Scheduled for August 19-23 is a meeting called E.C. Stakman Commemorative Symposium on Crop Loss Assessment. This will also be on the West Bank Campus of the U of M in Minneapolis. An impressive group of speakers, many from foreign countries, are scheduled to appear. The Symposium was organized by Paul Teng, Sagar Krupa, James Groth and James Baumer and Richard Meronuck of the Office of Special Programs.

the USDA Office of International Cooperation and Development (OICD). Larry has also written another book, "Biology of Plant Rusts; an Introduction", which will be published this year by the Iowa State University Press.

Monica Wallace, MS 1978, dropped in June 9. Monica will become a Plant Industry Specialist 3, with the Wisconsin Department of Agriculture on July 1. The work will include surveying crops for the presence of diseases and pests, identification of pathogens, TV and radio work and popular writing. Monica worked for the Wisconsin Water Resources Department before accepting the new job. She will be stationed in Madison.

RECENT DEPARTURES AND NEW JOBS

Mark Josephson earned the MS degree in 1977, majoring in plant physiology with Prof. Bob Brambl as his adviser. His thesis research was on mitochondrial biogenesis during the germination of fungus spores. As of February, 1980, he was in the Department of Laboratory Medicine and Pathology, U of M School of Medicine.

Winston Hagler has accepted a position as mycotoxicologist in the Department of Poultry Science, North Carolina State University. Winston took his PhD final on June 11, and left Minnesota July 20, 1979.

Anita Dille, Secretary and operator of the "word processor" resigned as of July 20, 1979 and took a better job in the Soils Department.

Brahim Ezzahari, who passed the MS final June 15, 1978, returned to Morocco where he is working on wheat diseases (principally rusts) at the Laboratoire de Phytopathologie, Institut Agronomique et Veterinaire Hassan II at Rabat-Agdal. He also teaches courses in disease resistance, seed pathology and mycology at the Institut.

Ted Knous is now Assistant Professor of Plant Pathology at the University of Nevada, where he will work principally on disease of alfalfa. Ted took his PhD final on July 30, 1979, and left Minnesota on November 30.

David Gardner is presently at Virginia Polytechnic Institute and State University working toward the PhD. He left Minnesota September 12, 1979. Dave returned for a few days in December to take his MS final on December 17 and enjoy a few days of Minnesota's delightful weather.

Early in 1979 Scott Sederstrom, candidate for the MS, accepted a position as Coordinator in the Crop Pest Management program operated in West Central Minnesota. Scouts under Sederstrom examine fields (of sunflowers, for example) to determine the presence and

severity of diseases and insects. They keep growers informed and recommend control measures.

Stephen Sunderwirth took his MS final May 18, 1979, and left early in June for France, where he found a job as plant pathologist with a seed company at Oise, 80 km north of Paris. Stephen was married about August 19 to a French citizen named Liliane. The Department received an invitation to the glad event, but it was lost or filed before some of the essential details got into Aurora's files. Our apologies to Stephen and Liliane and we will add the missing information if we can find it. Stephen spent two years in France in the early 1970s as counselor to childrens' homes.

Nilceu R.X. de Nazareno returned to Brazil after passing his MS final November 13, 1979. He is now working at the Instituto Agronomico do Parana (IAPAR) in Londrina, Parana. Nilceu and Christina miss the life in Minnesota and the low rate of inflation. In Brazil it went from 40 to 80% during their absence.

Gusti Sarbini, PhD, July 19, 1979, was safely back in Banjubaru, Indonesia by August 10. Gusti is on the Faculty of Agriculture, Lambung Mangkurat University, where he will be teaching introductory plant pathology and soil microbiology, besides doing research. His two sons, Novi and Irwan, enrolled in the 3rd and 4th grades, but had to take an intensive course in the Indonesian language, having forgotten most of what they knew during five years in Minnesota.

Michael Grisham, PhD 1978, is now Assistant Professor of Plant Pathology, Texas A & M University.

Kaselan Somodiryo departed June 27, 1979, to return to Yogyakarta, Indonesia where he was to assume his previous position as Lecturer in the Faculty of Agriculture, Gadjah Mada University. Kaselan passed his MS final June 14, 1979.

It is rumored that Suzie Lannan will be married in Indiana, August 2, 1980, to Timothy O'Hare, her jogging buddy. Suzie was receptionist in the Plant Path office from January, 1978 until September 13, 1979, when she resigned to attend the University.

Brad Mogen graduated in March, 1980, with a major in Plant Health Technology. He accepted an assistantship at North Dakota State University (Fargo) to work with OT Larry Littlefield and become a candidate for the MS. Brad worked in the Department for several years as an undergraduate.

Hunt Wiley, MS January, 1979, left April 15, 1980, to take a position with Dairyland Research International, Dairyland Seed Co, Inc., Clinton, WS. Hunt will work with an agronomist on a soybean improvement program. His research at Minnesota was on biological control of seedling blight of sweetcorn.

Rachid Sayoud left March 3 to spend a week or so in Oregon before returning to Algeria where he has a position in the Ministry of Agriculture. Rachid passed the MS final oral exam February 15, 1980.

Curt Hill passed his MS final on May 30, 1980, and left the next day for the University of Wisconsin to take a job as technician on the crucifer project under Prof. Paul Williams. Curt's thesis was on the Rhizoctonia disease of potatoes. His adviser was Neil Anderson.

Gary Franc has accepted a position as technician at Colorado State University where he will work on potato diseases under O.T. Monty Harrison. Gary went to Colorado to help plant potatoes this spring, but returned to finish his MS before June 30.

April 4, 1980. A farewell tea was held for Steve Swanson, who left a couple of days later to take a position in the Division of Veterinary Medicine at the University of Illinois, Urbana. Steve will work with mycotoxins and other toxins. He returned May 16 to take the MS final.

Barbara Christ will leave about June 30 to enroll in the University of British Columbia to work for the PhD. She passed her MS final April 2. Jim Groth was her adviser.

Glenn Furnier will go to Oregon State University in August, 1980. Glenn has a Weyerhaeuser Fellowship and will do research on forest genetics. He is completing his MS on Scleroderris under Neil Anderson.

Kathy Widin, who finished work for the PhD in May, left June 16 for Boston, MA, where her husband is a Post Doc at MIT. Kathy has a couple of job interviews scheduled in the Boston area.

Laura Sweets has accepted a position as Extension Pathologist at Iowa State University. She will begin work July 1, and will finish work for the PhD before then.

Phil Berger passed his MS final March 18, 1980, (R. Zeyen, adviser), and accepted a position as research technician at Texas A & M University. He will work on viruses of cereals and grasses under Dr. R.W. Toler. He will also be a candidate for the PhD.

Three of Prof. Mirocha's stable of scientists resigned in recent months, all to work for 3M (Minnesota Mining and Manufacturing) in St. Paul. They were:

Sydney Nystrom, Research Fellow, computers, resigned October 24, 1979. He joined the Department March 15, 1974.

Tom Robison, Research Fellow, organic chemistry, left May 1, 1980, after working since September, 1975.

Sadanand Pathre, Assistant Scientist, analytical chemistry. He worked from October, 1971, to March 14, 1980.

June 9. John Laurence, PhD 1976, was in the area for a few days, searching for seed of plants to be used as bioindicators of air pollution. John is with the Boyce Thompson Institute at Cornell U.

NEW STAFF

James S. Baumer assumed his duties as Assistant Professor in July, 1979. Jim is a native of Oklahoma. He earned the BS in Biology, 1974, and the PhD in Plant Pathology, 1979, at the University of California, Riverside. His responsibilities will include research on cereal diseases (not rusts) and diseases of sunflower.



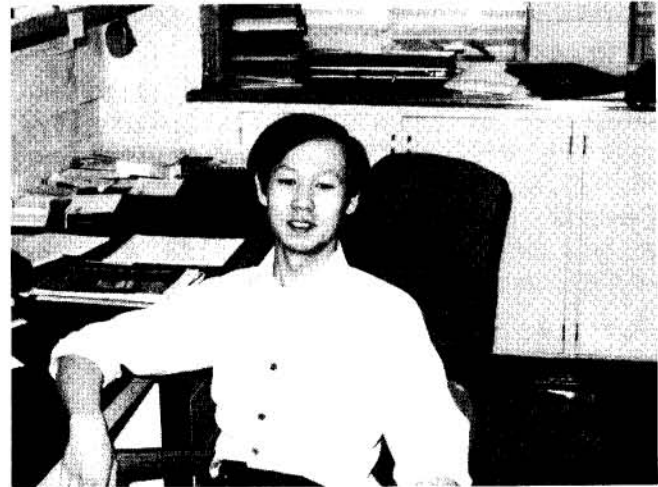
ROBERT BLANCHETTE

Paul S. Teng arrived in September, 1979, to be Assistant Professor in charge of research and teaching in plant disease epidemiology. Dr. Teng was born in Muar, Johor, Malaysia. He received the degree of B. Agric. Sc. (with honors) at Lincoln College, University of Canterbury, New Zealand in 1973 and the PhD in Plant Pathology in 1978 from the same institution. He was Assistant Professor at Lincoln College from June to December, 1978, and then on a scholarship in Wageningen, The Netherlands, until coming to Minnesota.



JAMES BAUMER

Robert A. Blanchette became Assistant Professor March 1, 1980, to assume the job of teaching and research on tree diseases -- Dave French's former responsibility. A native of Massachusetts, Bob received the BS in Biology at Merrimack College, Andover, MA; the MS in 1975 in Forest Pathology, University of New Hampshire, and the PhD in Plant Pathology from Washington State University in 1978. Before coming to Minnesota, he was Research and Teaching Associate at WSU.



PAUL TENG

LOCAL NEWS

Born August 5, 1979, to Dave and Pat Long, Shelly Freance, wt. 6 lb, 12 oz.

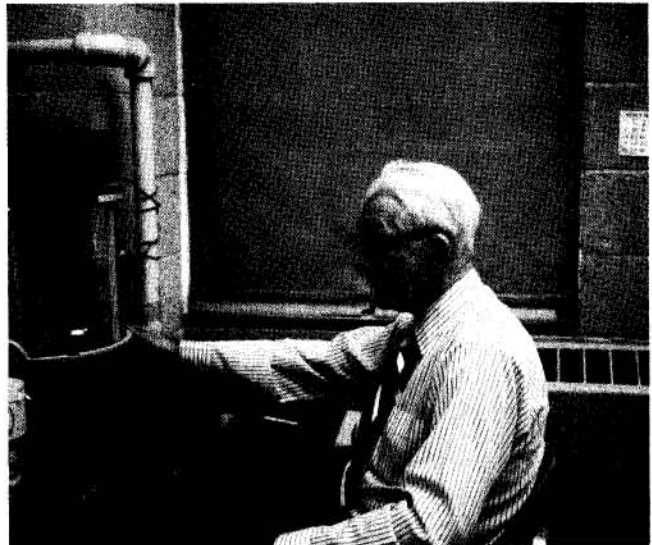
Born March 19, 1980, to Paul and Sue Teng, Kevin Wei Zhong.

Married July 14, 1979; Kathryn Warlich and Thomas Kromroy. Tom is a schedule analyst for Dayton-Hudson Properties.

Barbara Tetzloff and Thomas Mueller were married April 26, 1980. Tom works for the General Office Products Co., in St. Louis Park, MN.

Norman Borlaug, PhD 1942, was in town February 2-11, 1980, speaking at the U of M President's Energy Seminar, visiting with a group of Minnesota legislators, the University Board of Regents and several deans and vice presidents. On Feb. 11 he talked informally with graduate students and staff at a prolonged coffee break, explaining with vigor his views on agriculture, economics, energy and the feeding of the world's hungry. Norm retired as leader of the CIMMYT wheat program last July 1, but is still associated with CIMMYT and the Rockefeller Foundation in wheat improvement work. But travel and conferences, speeches and consultation still take much of his time.

The Monsanto Agricultural Products Co. has made the University an annual grant of \$3000 for the next five years in honor of Philip C. Hamm, PhD 1950, who died January 10, 1979. The money will support an annual lecture, "The Annual Hamm Memorial Lecture Series in Plant Sciences" and a scholarship, "The Hamm Memorial Scholarship in Plant Science." A committee of the College of Agriculture has been appointed to work out the details. Phil held the position of Distinguished Science Fellow with Monsanto, where he spent most of his career investigating and developing herbicides. His PhD thesis was in Applied Plant Physiology, then a section of the Department of Plant Pathology.

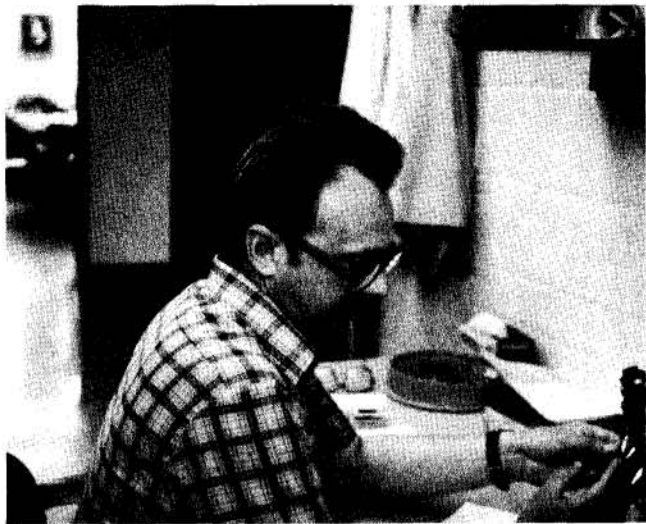


PROFESSOR CHRISTENSEN

Regents' Professor C.M. Christensen and Katie Christensen sold their home in St. Anthony Park and will move to Sun City West, AZ, about July 10, 1980. Clyde retired June 30, 1974, but has been at the plant pathology building nearly every working day since then, doing research, writing and consulting with numerous individuals and companies, most of whom have grain storage problems. Since his official retirement, he has been author of 31 publications and has revised his book, "Common Edible Mushrooms" for a new edition. "Molds and Man" will also be revised. "As we go to press," Clyde has accepted the position of Editor of a third revised edition of "Storage of Cereal Grains and Their Products." Clyde was also Editor of the second revised edition of the book, which appeared in 1974. Clyde has been on the plant pathology faculty since 1930.

Professor Thor Kommedahl gave the Seventh A.W. Dimock Lecture at Cornell University, October 11, 1979. His subject: "Biological Control of Seedborne Plant Pathogens." The announcement stated that "He has spoken widely on this subject." No narrow speaker, Kommedahl.

VISITING SCIENTISTS



Dr. Godzik

Dr. Stefan Godzik is a Visiting Professor in the Department doing research on air pollution effects on plants in Dr. Sagar Krupa's Lab. He will also advise graduate students and present several lectures and seminars. Dr. Godzik is Department Head, Air Pollution Effects on Plants, Institute of Environmental Engineering, Polish Academy of Sciences, Zabrze, Poland. He will be in Minnesota May - October, 1980.

CHINESE GROUP INCLUDES OLD TIMER

August 29. Three plant pathologists from the Peoples' Republic of China visited the Department. They were: Ke Chung, Pathologist at the Academy of Agricultural Sciences, Fukien; Chiu Weifan, Pathologist at the Department of Plant Protection, Beijing Agricultural University, Beijing (Peking); and Vice President and Secretary General of CSPP; and Shen, Chi-YI, Professor of Plant Pathology and Vice President, Beijing Agricultural University. They were members of a group of plant pathologists and entomologists touring American agricultural institutions. Prof. Shen is an Old Timer, having spent several months in the Department in 1939.

RUTZE STUDIES OAK WILT

Matthew Rutze arrived in the Department May 12, 1980, and will investigate oak wilt in the laboratory and field until about July 15. Matthew is an investigator in the Bundesforschungsanstalt fur Forst- und Holzwirtschaft in Hamburg, Germany. He is a student of Dr. Walter Liese at the University of Hamburg. Regulations of the Commission of European Communities now limit the importation of oak logs and lumber because of their concern about the possible introduction of oak wilt into Europe. Rutze is studying the disease in this country with the objective that more realistic regulations may be established in the future.



Matt Rutze

HERNANDEZ HERE FROM MEXICO

Thomas Hernandez T., a graduate of the Escuela Nacional de Agricultura, arrived September 1, 1979, and spent six months in the air pollution laboratory of Dr. Sagar Krupa. He is interested in the problem of pollution damage to Mexican pines. Thomas returned to Mexico February 29, 1980. He expects to enter the Colegio de Postgraduados in the near future.

THE CLINIC GETS A NEW CHIEF



Jill Pokorny took charge of the Plant Disease Clinic on May 19, 1980, with the rank of Junior Scientist. Jill graduated June 10 with a major in the Plant Health Technology program. Besides working part time in the Clinic, she has worked as lab attendant for Prof. Wilcoxson and in the Cereal Rust Lab. She has also had experience in the Insect Clinic on the campus and with a commercial florist company.

NEW IN THE OFFICE



Barbara Tetzloff became receptionist in the main PIPa office in September, 1979, replacing Suzie Lannan. Barbara is a native of Ann Arbor, MI, and attended Carleton College and the University of Minnesota, majoring in biology.

Tim Huberty joined the office staff August 1, 1979, replacing Anita Dille as operator of the word processor. Tim is a graduate student -- a candidate for the PhD in American Studies. His thesis is on American Catholicism. These facts seem well established. Tim claims that he lived in Yonkers, NY, as a boy and walked five miles to school every day. He states furthermore that he had no shoes until he was seven-years-old. That is supposed to be character-building.



Timothy Gerard Huberty

MYCOLOGISTS GO SOUTH FOR SCIENCE

Elwin Stewart, Mary Palm and Barbara Christ made a mycological collecting trip, June 4 - 12, to Horn Island, which is located in the Gulf of Mexico, a short distance from Bay St. Louis, MS. Elwin had been there and in southern Louisiana in 1976 and 1977, and recognized the area as a good place to study hypogeous mycorrhizal fungi (true and false truffles). He and Mary have been doing extensive work on mycorrhizae in Minnesota.

With the cooperation of Dr. William Cibula, mycologist for NASA, they were able to camp on the island, finding fungi, fresh crabs, flounder and oysters as well as snakes, chiggers and high temperatures. The trip was a great success scientifically and a new species of *Elaphomyces* was found associated with live oak.

OBITUARIES

We learned recently that John G. Churchward died on January 3, 1979, following a heart attack. John was born April 17, 1905, in Northam, Western Australia. He earned a BSc (Honours) at the University of Sydney, 1927, the MS, 1933, and PhD, 1936, in Plant Pathology at Minnesota. He was Lecturer at the University of Sydney 1934-38 and in 1939 became Agricultural Adviser and Research Officer for the Anglo-Indonesian Plantations of Java, Ltd. He was with that company until 1961. We have no more recent information about his professional career.

Thorvaldur Johnson, MS 1925, PhD 1930, died in Winnipeg, Man., September 15, 1979. He was 82 years old. As plant pathologist with the Canadian Department of Agriculture, Dr. Johnson became Director of the Cereal Rust Program in 1945, Officer in Charge of the Plant Pathology Laboratory in 1953 and Director of the new Winnipeg Research Station in 1959. He retired in 1962.

T. Johnson's contributions to knowledge of cereal rusts and breeding for resistance were numerous, including a famous paper on man-guided evolution in plant rusts (1961) which was a philosophical breakthrough in the understanding of host parasite relations. He was leader of a remarkable group of investigators at the Winnipeg Rust Lab and always much admired for his professional and personal qualities by his friends in Minnesota.

Among the many honors he earned are the Stakman Award in 1958 and the U of M Outstanding Achievement Award in 1959.

John A. Stevenson, retired Head of the Division of Mycology and Disease Survey, USDA, died October 30, 1979. He was 89 years old. John was born in Woonsocket, SD, and graduated in Forestry from the U of M in 1912. He took graduate work in Mycology and Plant Pathology and went to Washington, DC, in 1918 as Pathology Inspector with the Federal Horticultural Board. Among other honors, John received the U of M Outstanding Achievement Award March 1, 1975. According to the Cita-

tion, the award was made in recognition of his contributions as mycologist, developing the National Fungus Collection and for numerous contributions to mycology. He retired in 1960, but continued as a Collaborator with the USDA for another 15 years. He is survived by Mrs. Stevenson, three sons, grandchildren and great-grandchildren.

HONORS

The following became members of Sigma Xi at the mid-year initiation January 16, 1980: Associate Members: Ted Knous, Nilceu de Nazareno, Mary Palm, Stephen Sunderwirth. Full Members: Winston Hagler, Sadanand Pathre, Paul Teng. Promoted to Full Membership: Gusti Sarbini. Prof. Thor Kommedahl was President of the Minnesota Chapter in 1979-80.

At the Sigma Xi initiation in May, 1980, Edgardo Hijano, Gregory C. Pratt, and Hunt Wiley were made Associate Members. Benham Lockhart and Erik Stromberg were made Full Members and James Groth and James Percich were promoted to Full Membership. Retiring President Thor Kommedahl gave the address of the evening: Biological Control of Plant Diseases.

The Biological Club (Bug Club) has commissioned a plaque in memory of Dr. Stakman. The plaque will be placed in Coffey Hall. It reads, "Elvin Charles Stakman, 1885 -1979. Biology Club Founder, 1913. Plant Pathologist, Teacher and Universal Scholar who Advanced World Agriculture. With Affection and Pride. Biological Club, University of Minnesota, 1980."

Roy V. Sturgeon, Jr., PhD 1968, was elected to the Oklahoma Turfgrass Hall of Fame at the 34th Oklahoma Turfgrass Conference. Roy is Professor of Plant Pathology at Oklahoma State University, doing research and extension work on diseases of turfgrass. He was Executive Secretary of the Oklahoma Turfgrass Research Foundation for 12 years.

WESTERN DONATES TUSLANES

Prof. J.H. (Jack) Western made an unusual gift to the future Stakman Library. This was a set of *Selecta Fungorum Carpologia* of the Brothers L.R. and C. Tuslane (three volumes). This edition is an English translation by W.B. Grove, edited by A.H. Reginald Buller and C.L. Shear. It is beautifully printed and hand bound according to Prof. Western's specifications.

Malcolm Shurtleff, PhD 1953, received the Award of Distinction, *Adventures in Agricultural Science*, at the IX International Congress of Plant Protection, Washington, DC. According to *Phytopath News*, Mal is author or co-author of 23 books and monographs and over 750 journal and magazine articles. His book, "How to Control Plant Disease in Home and Garden," has sold 125,000 copies in two editions. He has received numerous other honors. This amazing individual also "jogs" or "runs" and had been doing so for years before running became a national obsession.

Norman Borlaug, PhD 1942 and Nobel Laureate, received the *Adventures in Agricultural Science Award*.

John B. Rowell, PhD 1949, was made a Fellow of the American Phytopathological Society at the meeting in August, 1979. John has been on the staff of the Cereal Rust Lab since it was organized in 1962 and has been Director since 1969. His citation states "Dr. Rowell has an unusually broad intellectual grasp of science and its implications. He consistently uses a fresh, innovative approach to attack problems, has frequently developed new methods, and always does careful, systematic experiments that clearly demonstrate new findings." It might be said that John is as good a fisherman as he is a scientist. Certainly he loves both.

RETIREMENTS

James A. Lyle, PhD 1953, retired September 30, 1979, from his position as Head of the Department of Botany and Microbiology, Auburn University, Auburn, AL. Jim had been Head since 1954, continuing his active interest in research until 1971. His research was primarily on diseases of the peanut. A possible indication of his success is shown by the fact that peanut yields averaged 850 lb/a in 1947, when he started his work, and 2100 lb/a in 1971. Missing from an impressive list of honors and accomplishments in the press were a few statistics provided by Jim. During his tenure, "Staff -- increased from 12 to 67; \$ support, from \$63,000 to \$1,250,000; Students, undergraduate from 0 to 85 majors; graduate from 0 to 35 during 1954-1979. Also, during my tenure as Head, 48 MS and 45 PhD degrees were awarded to our students." That's not peanuts, suh.

Earl D. Hansing, BS 1933, retired in 1979 as Plant Pathologist at Kansas State University, where he had been on the staff since 1940. Earl was promoted to professor in 1946 and was Acting Head of the Department in 1972-73. He was known internationally for his research on seed treatment and seedling diseases of cereals and sorghum. He received the MS at Kansas State and the PhD at Cornell.

Dr. George H. Bridgmon retired from his position with the University of Wyoming in 1979. He was Head of the Section and Professor of Plant Pathology. After retirement, he accepted a position as Chief of Party and Research Agronomist for MASI in Zaire. George, PhD Wisconsin, 1951, was Research Associate in Plant Pathology at Minnesota in 1956-57.

On September 10, 1979, thieves forced open a window in the elementary lab on the first floor of Stakman Hall, broke into a locker and stole three valuable microscopes.

INTERNATIONAL RELATIONS

In June, 1979, Ben Lockhart and several staff members from other departments on the campus spent several weeks visiting educational and research institutions in Cuba. The trip was made under the auspices of University International Programs to determine if a mutual exchange of personnel would be profitable.

As part of the same exploratory effort, Dr. Gilberto Skeen, Professor of Plant Pathology, Instituto Superior de Ciencias Agropecuarias de Habana (ISCAH) visited our Department, October 15-19, conferring with staff and students concerning the organization and details of teaching, extension and research in Plant Pathology in Minnesota.

Finally, Hunt Wiley, who was working for the PhD in Kommedahl's lab, went to Cuba December 2-24 to explore the feasibility of long-term exchanges of students for research and study. Hunt was one of 10 students in various disciplines in agriculture from Minnesota who made the trip. Hunt, who speaks Spanish, said they were treated very well in Cuba and that the trip was well worthwhile. Future developments in the Cuba-Minnesota interchange program have yet to be decided.

During February 4-25, 1980, Ben Lockhart was in Morocco to advise students working on virus problems at the Institut Agronomique et Veterinaire Hasan II in Rabat. He also made a survey of barley diseases in Morocco.

On the same trip Lockhart, with two entomologists, conferred with scientists and officials in Tunisia. They also held seminars and workshops on integrated pest management under the auspices of a U of California/USAID IPM program.

In March-April, 1980, Ben was in North Shaba Province, Zaire, to study the distribution of virus and other diseases on several crops. This is also an AID--supported program.

Dr. Sagar V. Krupa went to Poland July 4-21, 1979, at the request of the Polish

Academy of Sciences. He visited two major air-pollution laboratories, discussing their research programs. He presented two seminars at each lab.

Sagar has been invited to teach air pollution courses in Mexico at the Colegio de Postgraduados, Escuela Nacional de Agricultura, Chapingo, Mexico. He will be there for six weeks during July and August, 1980.

Dr. Krupa was Co-chairman, with Dr. A.H. Legge (Canada), of an International Conference on Air Pollutants and Their Effects on the Terrestrial Ecosystem. The Conference was held at Banff, Alberta, Canada, May 10-17, 1980. It was attended by about 85 people from 11 countries. Present from Minnesota, besides Krupa, were: Boris Chevone, Gregg Pratt and Dr. S. Godzik. Also present was O.T. Dr. M. de Lourdes de Bauer (Mexico).

Dr. Krupa has also been invited to the University of Nottingham, U.K., to chair one of five sessions of the 32nd University of Nottingham School of Agricultural Science. The School, which will deal with the effect of air pollution on agriculture and horticulture, will be held September 1-4, 1980.

Prof. Bill Kennedy was in Italy October 16 - November 16, 1979. He spent a couple of weeks with Dr. Gian Ercolani at the University of Bari, completing some work started when he (Bill) was in Bari in 1978. He also stopped at the University of Pisa to confer with Prof. Piero Gambogi about seed borne disease of soybean. Finally, he went to Switzerland to visit Tom Egli of Ciba-Geigy concerning the chemical control of bacterial diseases of plants, especially fireblight of apples.

Prof. Robert Brambl was in the British Isles August 13-25, 1979, attending a research conference and visiting research laboratories in Cambridge and Edinburgh Universities.

D.W. French, Professor and Head, spent July 8-13, 1979, in Belgium, Italy and Germany with representatives of the European Common Market to discuss pending restrictions on the importation from the U.S. of oak logs and lumber. The Europeans are concerned about the possibility of introducing oak wilt pathogen. French made the trip at the behest of the U.S. Department of State and the National Forest Products Association.

Dr. Ben Lockhart went to Germany and presented two papers at the Fifth International Symposium on Virus Diseases which was held May 18-23 at Bad Harzburg. After that he spent a week in Morocco advising Old Timer Mohammed El Yamani with his M.S. thesis. El Yamani did his course work in Minnesota, returning to Morocco last year. His thesis is on barley yellow dwarf, which Ben reports is very widespread and destructive this year.

During August and September of 1979, Prof. C.J. Mirocha visited Sweden, Switzerland and South Africa, attending symposia in those countries and presenting five invitation lectures on mycotoxins and related subjects. He conferred with Dr. W.F.O. Marasas, South African Medical Research Council, Capetown and initiated cooperative research on the distribution of toxigenic species of *Fusarium* in cereal grains in the Transkei.

Donald McVey, Plant Pathologist in the Cereal Rust Lab, and Prof. Roy Wilcoxson attended the International Wheat Conference, Madrid, Spain, starting May 20, 1980. Both presented papers. After touring some experiment stations in Portugal and Spain, they went by bus to Morocco to see cereals and cereal diseases. At the Conference, they visited with Old Timers Gene Saari, Mike Prescott, Rolly Line, Harry Young and Jim Burleigh. Roy reports that Saari will move from Egypt to Bangkok in the near future. Saari has been instrumental in a recent great increase in the culture of wheat in Bangladesh, and hopes to achieve the same in other areas of the East.

PROMOTIONS

The following members of the academic staff were promoted July 1, 1979: from Associate to Full Professor, J.R. Burleigh, from Assistant to Associate Professor, J.V. Groth, S.V. Krupa, B.E. Lockhart and F. Pflieger. Effective July 1, 1980, Elwin Stewart was promoted from Assistant to Associate Professor.

On January 1, 1979, Loren Nickelson was promoted from Assistant Scientist (Civil Service) to Research Specialist (Academic).

Civil service staff promotions included A.V. Pathre to Assistant Scientist, April 1, 1979; R. Denny to Senior Laboratory Technician, June 16, 1979; Debra E. Baden, to Senior Secretary, July 16, 1979; Connie J. Vosberg to Senior Accounts Specialist, October 1, 1979; and Carol E. Windels, to Scientist, January 16, 1980.

As of February, 1980, James A. Percich, Thomas Nicholls, and Paul Teng were approved as Associate Members of the Graduate Faculty. Ben Lockhart and Alan Roelfs were promoted to Full Membership. Robert Blanchette and Erik Stromberg were appointed Associate Members.

Alan Roelfs, Plant Pathologist in the Cereal Rust Lab, made two trips to Mexico early in 1980. In April, he spent a couple of weeks in Monterrey and vicinity and in May he was in Obregon. Roelf's objective, sponsored by the USDA, OICD, was to establish a cooperative program for identification of races of *P. g. tr.* and *P. recondita*. This work has been neglected since E.C. Stakman retired.

Paul Rothman, Plant Pathologist in the Cereal Rust Lab, spent two weeks (April 20-May 4) in Israel at the invitation of the University of Tel Aviv. His principal objective was to study the rusts of the *Avena* spp. which are indigenous to that area. Much time was spent in the laboratory of Old Timer Isaac Wahl at the University. Dr. Wahl is a world authority of the co-evolution of rusts and cereals.

THE INTERNATIONAL CONGRESS

Old Timers Renew Ties, Bend Elbows

Two thousand plant protection scientists from 80 countries congregated in Washington, DC, in August, 1979, for the IX International Congress of Plant Protection. At least 96 Minnesota Old Timers, including some currently serving time at Minnesota, assembled there, having come from nine nations and 23 states of the USA; 60 of them were authors on 64 of the 958 abstracts of talks given at the Congress.

It was not all talk. There was Honor and the title of ADVENTURERS IN AGRICULTURAL SCIENCE was conferred on Nobel Laureate Norman Borlaug and on extension pathologist Malcolm Schurtleff, and the title of Fellow of the American Phytopathological Society was given to John Rowell. All three are Minnesota Old Timers.

Faculty, staff and students from Minnesota were well represented as authors of papers: N.A. Anderson, F.A. Baler, E.E. Banttari, J. Baumer, B.I. Chevone, B.J. Christ, D.W. French, D.W. Gardner, J.V. Groth, B.W. Kennedy, T. Kommedahl, S.V. Krupa, R.R. Musick, T.H. Nicholls, M. Ostry, M.A. Palmer, G.C. Pratt, G. Sarbini, A.L. Schipper, D.D. Skilling, M.A. Stennes, P. Teng, K.D. Widen, R.D. Wilcoxson, H.B. Wiley, C.E. Windels and R.J. Zeyen.

New York authors were A.F. Sherf and G. Hudler of Cornell, J.A. Laurence of Boyce Thompson, and P.D. Manion from Syracuse. Pennsylvania was represented by H.E. Carley from Rohm and Haas, and by Bill Merrill from Penn State, Maryland by G.C. Papavizas (Beltsville) and G.A. Bean (College Park), and New Jersey by D.J. Sarojak.

The Midwestern authors, in addition to the 27 from Minnesota, H.L. Warren (Purdue); A.H. Ellingboe, H.H. Murakishi and D.H. Smith (Michigan); D.C. Army, R.D. Durbin, and C.R. Grau (Wisconsin); W.H. Bugbee and J.R. Venette from North Dakota; D.C. McGee and R.F. Nyvall (Iowa), M.G. Boosalis (Nebraska); and E.D. Hansing (Kansas).

And so, as of old, when graduates spouted forth in divers ways, having drunk from the foaming fount of the now-extinct *Phytobrickhaus tremuloides* (The Tottering Tower), they now emerge from *Phytobrickhaus erectus* and its mutant, *P. erectus* var. *triflorus* to raspilate and ruminare roundly in the words of science and society.

--T. Kommedahl

BARC BIOCONTROL SYMPOSIUM

Old Timer and APS Fellow George Papavizas organized and chaired the Beltsville Agricultural Research Center (BARC) Symposium No. 5, entitled "Biological Control in Crop Production," held May 18-21, 1980, at Beltsville. About 450 plant pathologists, entomologists and weed scientists attended. Minnesotans Thor Kommedahl and Carol Windels led a discussion on "Microbial Antagonists in Special Infection Courts: Seeds, Seedlings and Wounds." Other Old Timers present were potato pathologist Bob Groth, oil-seed pathologists Denis McGee and Jim Venette, and epidemiologists Ken Bromfield and Bob Shrum.

--T. Kommedahl

MYSTERY SOLVED

On Page 20 of the Stakman Day Aurora (May, 1979) is a picture of several famous scientists on a collecting trip in 1914. It includes E.M. Freeman, A.O. Appel, Louise Jensen, E.C. Stakman and A.G. Tolaas. Another, a lady, was unidentified. Dr. S.J. Wellensiek writes that "with $P > 0.95$ this person is the late Professor Dr. Johanna Westerdijk, well-known Dutch mycologist and plant pathologist." We are indeed indebted to Dr. Wellensiek for this information. Dr. Wellensiek spent the academic year 1926-27 in the Department.

ATHLETICS

The athletic event of the year was the annual E.C. Stakman Student-Staff Softball Game, played May 10, 1980. After five years of humiliating defeats, the Staff finally won -- dramatically. They trailed until the 7th inning, 4-6, but made two runs and tied it 6-6. In an extra inning they made six runs. Final score: 12-6. A prouder lot of people you never saw. The professors bragged most of the following week, although they had the help of stars like Debbie Baden, Sharon Susmilch and Connie Vosberg. Debbie and Erik Stromberg pitched for the Staff; Judy Thies for the Students. A barbeque was held after the game.

WINNERS - THE STAFF



Kneeling: Baden, Vosberg, Susmilch, Johnson. L - R: Baumer, Pflieger, Casper, Long, Nickelson, Stromberg, Stewart, Groth, Zeyen. Tall, behind: Percich, McVey

The co-rec (bisexual) softball team didn't do so well, being defeated in four games with other campus teams. Their last defeat (14-12) was by the Ass-co-my-seats (undergrads in Plant Health Technology).

In other team events, the mens' volleyball team was eliminated in the St. Paul campus finals and the Co-Rec volleyball team placed second in the B Class.

Other forms of recreation (of the athletic type, that is) continue to be popular in the Department. Jogging is the most common, Alan Pierce, T. Kommedahl, Dave French and Chet Mirocha being prominent "born again" runners. Frank Pflieger gets about the same results by skipping rope in his own home and does not have to have colored pants to do so. In the same category is "aerobic dancing," a group activity that is scheduled at noon three times/week. Sharon, Connie, Mark Stennis and Mary Palm indulge and get just as pooped as the joggers. Of course, the Department wits ask, "What is anaerobic dancing?."

In winter, skiing is popular & there are a number of devoted cross-country skiers. To our knowledge Chet Mirocha is the only serious alpine skier. He patronizes several ski-spots in Minnesota, and also goes to Colorado and Utah, evidence of a lifestyle that is truly high-class.

Come spring bicycling is popular, as a means of getting to work and back for both staff and students and for recreation as well. Mirocha and Groth have made bike tours to Red Wing, MN, and plan others to the vicinity of Duluth. Bruce Berry and Glenn Furnier, students, enter bicycle races.

STILL HAPPY - THE STUDENTS



Kneeling: Christ, Widin. L - R: Sweets, Bowden, Thies, Andrews, Baker, Stennes, Olson, Kromroy, Haugen.

1979		EXAMINATIONS PASSED	1980	
July 5	- Dale Bergdahl	- PhD	February 15	- Rachid Sayoud - MS
July 19	- Gusti Sarbini	- PhD	March 7	- Dale Smeltzer - MS
July 30	- Ted Knous	- PhD	March 10	- Gregory Pratt - MS
November 13	- Nilceu de Nazareno	- MS	March 18	- Philip Berger - MS
November 28	- Roger Musick	- PhD	April 2	- Barbara Christ - MS
December 6	- Katherine Widin	- Prelim	April 25	- Lois E.B. Johnson - PhD
December 6	- Scott Sederstrom	- MS	May 16	- Steve Swanson - MS
December 11	- Laura Sweets	- Prelim	May 16	- Katherine Widin - PhD
December 17	- Dave Gardner	- MS	May 30	- Curt Hill - MS
			June 27	- Carol Windels - PhD

RECENT GRADUATE STUDENTS

<u>Name, Academic Background, Starting Date</u>	<u>Adviser and thesis topic</u>
Atcham, Therese. HS, Lycee de New Bell Douala, Cameroon, Africa. Ing. Agr., Ecole Nationale Supereore Agronomique, July, 1978. Winter, 1980	Ben Lockhart. Virus diseases of vegetables
Belcher, Janese V. BSA, University of Georgia, 1977. Spring, 1980	Roy Wilcoxson
Bonnen, Alice M. HS, East Lansing, MI; BS, Michigan State University, Dec., 1978, Botany. Summer, 1980	Robert Brambl. Biochemistry of spore germination
Bowen, Kira L. BS, Pennsylvania State Un., 1980, Plant Sci. Summer, 1980	Paul Teng & Jim Baumer
Johnson, Keith D. HS, Moorehead, MN; BS, North Dakota State University, May, 1979. Fall, 1979	Ward Stienstra. Diseases of grasses
Livingston, William. HS, Dearborn, MI; BS, Michigan Technical University, 1976; MS, University of Idaho, May, 1978. Spring, 1980	Robert Blanchette. Dwarf mistletoe of black spruce
Mital, James. HS, Duluth, MN. BS, University of Minnesota, June, 1980, Forestry. Fall, 1980	Robert Blanchette and D.W. French. Sweet fern rust of jack pine
Steffenson, Brian J. BS, University of Minnesota, 1980, Plant Health Technology Summer, 1980	Roy Wilcoxson
Tan, Hau-Hsing. Taipei, Taiwan, BS, National Chung-hsing University, Taichung, 1975. Summer, 1980	Richard Zeyen. Not decided.
Vig, Nora S. BA, University of Michigan, 1962; MA, University of Chicago, 1967. Fall, 1979	William Bushnell

GRADUATE STUDENTS



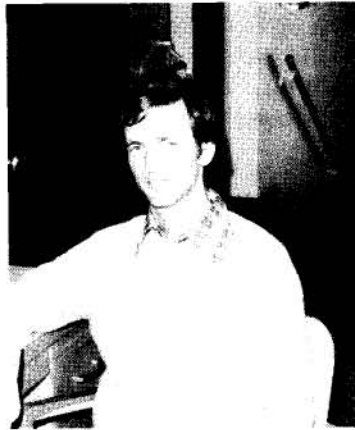
NORA VIG



JAMES MITAL



THERESE ATCHAM



WILLIAM LIVINGSTON



SUSAN STADE



KEITH JOHNSON

TUESDAY SEMINAR

This intellectual feast still begins at 4 PM, when some individuals have reached the low point in their circadian cycle. They suffer in silence. Others, like the late E.C. Stakman, are at the peak of their powers and relish knowledge and profound discussion more than food or drink. So it goes.

During the past academic year, the seminar abstracts were required to conform with those used in scientific meetings, giving title, author, reviewers (two staff members) and date). A

list of literature reviewed is on the reverse side. Presentations are supposed to take 35-40 minutes, leaving 15-20 minutes for discussion. Speakers were judged by the Seminar Sub-committee (E. Stromberg, Chairman) and selected members of the audience who received evaluation forms to guide their judgments. Each student performance was judged with him by the Sub-committee.

There were occasional guest speakers: Dr. E.S. Luttrell, Dr. J. Kuc, Dr. Mike Daly, Dr. T. Kommedahl. On three occasions student speakers presented their papers on Thursday evenings because of the full schedule on Tuesdays.

THURSDAY SEMINAR

The quality of speakers on Thursdays continues high. There were 10 guest speakers (see below), covering topics ranging from the inside working of the APS headquarters to zearalenone. Seven staff members and seven graduate students spoke, and one Old Timer, Bent Skovmand, told us of the far-reaching programs of CIMMYT. One evening was spent discussing current research programs in the Department, and another on the philosophy, preparation and presentation of Seminars. The latter discussion, led by the Tuesday Seminar Sub-committee of the Departmental Teaching Committee, applied chiefly to the formal Tuesday Seminar.

Guest speakers on Thursdays included: O.A. Ahmed, Bangladesh; Dr. Pharnia Sreenivasam; Raoul A. Robinson, Jersey, U.K.; Dr. P.E. Kolattukudy, Washington State U; Ray Tarleton, APS; Dr. Robert marfin, Univ of Brest, France; Richard Franta, U of M Computer Center; Dr. Thomas Lillsand, Department of Forest Resources; Mike Ostry, NC Forest Experiment Station; Whitney Crenshaw, Dept. of Entomology; and Dr. Liam Leightley, Univ. of Queensland, Australia.

Prof. J.M. (Mike) Daly, MS 1947, was an honored guest in the Department May 6-8, 1980. He spoke at the Tuesday PM Seminar on "Metabolic Alternatives for Host-parasite Relations" and on Thursday afternoon on "Studies of Structure and Action of Helminthosporium maydis race T toxin." During his free time he talked to students and staff members. It was a real treat to hear Mike lecture to Prof. Mirocha's class on the structure of the toxin produced by Helminthosporium. He still has the enthusiasm he had in the '40s.

Prof. Sagar Krupa's field tests near Clear Lake, MN, were damaged by a tornado during the night of June 5-6, 1980. Ten of 26 large chambers were destroyed as well as about \$50,000 worth of sophisticated equipment. The chambers were used to test the effects of air pollutants on crops in the field.

OLD TIMERS PUBLISH BOOKS

Larry J. Littlefield, PhD 1964, is author, with Michele C. Heath, University of Toronto, of a book, "Ultrastructure of the Rust Fungi," Academic Press, June, 1979. 296 pp., \$38.00.

Charles R. Olien, PhD 1956, and Myrtle Smith, MS 1952, are co-authors of "Analysis and Improvement of Cold Hardiness in Plants," 244 pp., \$55.95. Bob is with ARS, USDA and Myrtle is in the Crop and Soil Science Department, Michigan State University.

"Field Crop Diseases Handbook" is the title of a book published in 1979 by Robert F. Nyvall, PhD 1969, and now Professor of Plant Pathology and Extension Plant Pathologist, Iowa State University. It offers "complete information on over 810 crop diseases" on 465 pages for \$45, cloth bound. Cheapskates can get it with a soft cover for \$25.

J.M. Daly, MS 1947, is Editor, with Ikuzo Uritano, of Nagoya University, of a book, "Recognition and Specificity in Host-Parasite Interactions." Among the contributors are Bill Bushnell of the Cereal Rust Lab, St. Paul, and Al Ellingboe, PhD 1957. Old Timers R.D. Durbin and J.A. Steele, PhD 1974, co-author a chapter entitled, "What art thou, O Specificity?" All this, and more, if thou hast \$44.50.

And from a local source: S.V. Krupa and Y.R. Dommergues (French) (eds), "Ecology of Root Pathogens." 281 pp., \$75. Dommergues and Krupa, eds., "Interactions between Non-pathogenic Soil Microorganisms and Plants." \$95. Both by the Elsevier Scientific Publishing Co., NY.

Howard F. Schwartz, MS 1975, and Guillermo Galvex are editors of "Bean Production Problems," published by Centro Internacional de Agricultura Tropical (CIAT), Cali, Colombia, in January, 1980. It is available in Spanish or English for US\$ 15, plus postage. Over 85% of the 412 pages are devoted to diseases. It is illustrated with over 200 excellent color pictures.

THE CHRISTMAS PARTY

The Christmas party was held at Paul's Place on Snelling Avenue, December 12. About 120 attended. The outstanding feature of the evening was the musical entertainment. This included a trio, Kathy Kromroy, violin, and T. Kommedahl and Gib Alstrand, recorders, who played baroque Christmas music. Kathy Widen and Phil Berger with guitars, played and sang "folk" music. Barb Christ played a trumpet solo and Keith Johnson sang a solo, unaccompanied, called "the lute-fisk song." Gregg Pratt played some Scott Joplin music on the piano.

A few gifts were distributed to the specially deserving: The soft shoe awards to Mark Stennis because he fell off the stage while presenting his paper at the meetings and never missed a word; to Dr. French, cleats for his shoes so dawdling students would be aware of his approach. To Leonard Sargent, a skate board so he could get around to his job of receiving and delivering supplies, To Krupa, the acid rain award (a box of soda). To H. Bissonnette, the motile zoospore award in recognition of Howard's instructive speculations on the subject in seminar. To Paul Teng, our new authority on statistics and computers, a set of random numbers. There was an orchestra and dancing continued until 1 AM. Gloria Warner and Jim Percich had the floor alone while executing an original, unrehearsed dance of unusual quality and vigor.

The dinner, buffet style, cost \$10. The cash bar left all but the rich relatively sober.

After leaving Paul's, about 20 people accepted an invitation to Gloria's house where the food and drink, as usual, was tops in quality and quantity. So good, in fact, that several tarried until the cock crew. And Minnesota cocks don't crew very early in December.

THE CORN ROAST

The Annual Plant Path Corn Picnic was held at the usual place on the Rosemount Experiment Station on August 30, 1979. Most people who had experienced several such affairs judged it to be easily the best, although Ted Knous argued that the 1975 meeting (which he arranged) was better.

The ingredients of this outstanding affair were : 1. A perfect evening, cool and clear; 2. Chicken barbequed as only the Bielenbergs know how; 3. Plenty of corn (a special Green Giant selection) at the peak of perfection; and 4. Excellent organizational work by the Seminar Committee and volunteers.

Most folks added a little variety to the basic feast in the form of beer, cake, beer, salad, beer, pot, etc.

After the food, the young and vigorous played various sorts of football, soccer, frisbee, etc. Orville and Bissonnette took a few on tours of the plots, Howard making the most of an opportunity to educate the Head in agriculture and its disease problems.

Thanks are due to the retiring Seminar Committee, N. de Nazarino and Gregg Pratt, for excellent administration and for gathering, husking and cooking corn, assisted by Jenny Juzewick, Phil Berger, Mohammed Boulif, Laura Sweets and Barbara Christ. Special thanks go to Orville and Mrs. Bielenberg for chicken barbeque know-how and a lot of hard work cheerfully given and some fresh tomatoes.

PLANT PATHOLOGY ENDOWMENTS

In 1979, the Department of Plant Pathology launched two major, continuing endowment drives built upon private philanthropic gifts. The two endowments are: (i) The E.C. Stakman Visiting Professorship (with base funding from Dr. Stakman's estate); and (ii) the Plant Pathology Library Endowment.

The two endowments are actually based upon funds held in trust for the two objectives (see enclosed sheet for details). Only the interest from the endowment funds is used to accomplish the objectives of the endowments; the principal or body of the fund is never used. In practice, only a portion of the yearly interest is used; the remaining interest is added back to the principal of each fund, ensuring that endowment objectives are met yearly, in perpetuity.

In 1979, the Department received donations and gifts from 57 alumni and friends, and one corporation. The Department extends its deepest appreciation to the following donors, who are listed in alphabetical order.

G.C. Ainsworth	C.S. Holton	S.D. Rodenhiser
H. Asuyama	T. Inaba	P.D. Sanders
R. Brambl	E.M. Johnson	M.C. Sanford
A.M. Boyce	T. Laskaris	M.J. Schad
J.T. Castano	C.L. Lefebvre	M.J. Schneiderham
A.J. Drage	D. LeTourneau	C.P. Shumway
P.A. Donald	C.E. Logsdon	S.B. Silverborg
W.W. Donald	W. Merrill, Jr.	J.M. Skelly
C.J. Eide	D. Mumford	J.A. Stevenson
M.P. Evans	D.E. Munnecke	D.D. Stuthman
H.H. Flor	E.A. Munnecke	H.H. Thornberry
L. Fucikovsky	A.E. Newbery	A. Tjokrosudarmo
H. Fujii	A.G. Newhall	E.M. Tolaas
D. Gardner	R.J. Noble	L.E. Tyner
K. Goto	L.T. Palmer	I.A. Watson
G.E. Hafstad	J.M. Prescott	E.J. Wellhausen
E.D. Hansing	D. Punter	J.H. Western
J.G. Harrar	N.S. Raun	K. Wernimont
J.E. Hermansen	L.M. Roberts	C.A. Wismer
Corporate: Campbell's Soup Company		R.A. Zabel

The Stakman Visiting Professorship Endowment and the Plant Pathology Library Endowment are used to enrich the educational objectives of the Department. The concept of philanthropic gifts used to support educational functions is an old and time-honored tradition among many institutions, but is relatively new to departments in the agricultural sciences. Dr. William Hueg, Deputy Vice President for the Institute of Agriculture at the University of Minnesota, has put the objective of raising private, philanthropic funds very high on the Institute's list of priorities and has retained an Institute Development Officer, Mr. David Phillips, to assist individual departments in their endowment building efforts. Mr. Phillips, along with the University of Minnesota Foundation, and various other alumni and friends of the Department of Plant Pathology, have been most helpful to the Department in its endowment efforts to ensure that gifts are mutually beneficial to both donors and the Department. As we move into the future, the Department appreciates all input and ideas from our alumni and friends concerning these worthy efforts.

The current members of the Department's Endowment Committee are Drs. Eide, French, Kommedahl, Lang (Alumni Member), Zeyen and Ms. Mary Palm. The Committee

members, on behalf of the Department, its alumni and friends, wish to thank all past contributors and looks forward to continuing efforts to meet these very worthy philanthropic objectives.

Richard Zeyen

Cover Photo: The picture of Dr. E. C. Stakman taking notes on stem rust was taken in August, 1922.