

UNIVERSITY OF MINNESOTA

BOARD OF REGENTS

MINUTES

January 29, 1963

A special meeting of the Board of Regents, called by the President in accordance with the Bylaws, was held in the Washington A Room of the Leamington Hotel on Tuesday, January 29, 1963, at 5:15 p.m.

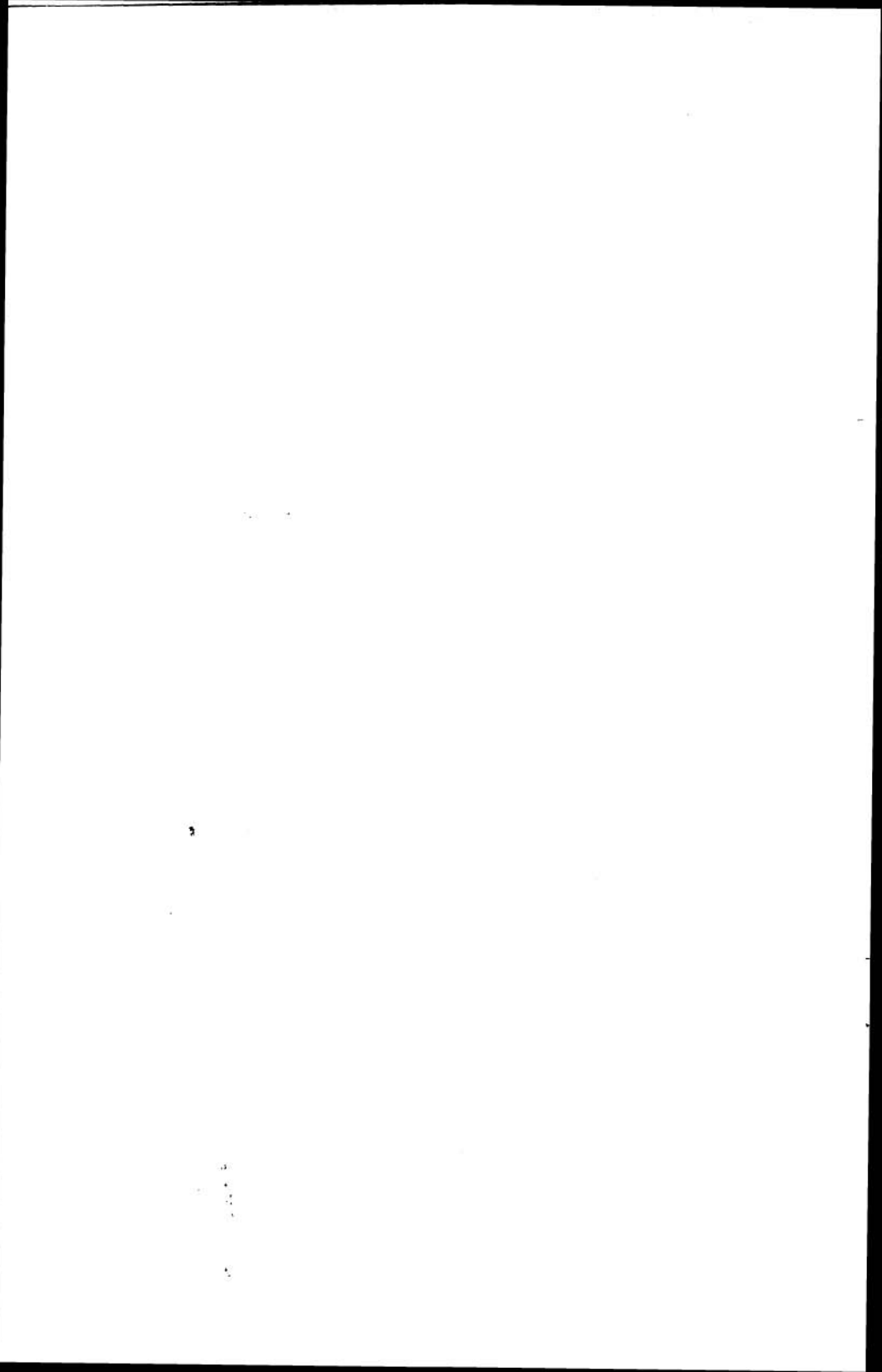
Present: Regent Mayo, presiding; Regents Griggs, Grottum, Hess, Howard, Hughes, Johnson, Malkerson, and Skyberg; and President Wilson.

Absent: Regents Gaaney, Olson and Silha.

Regent Griggs presented a summary of the progress that had been made in getting donations for the faculty club on the Duluth Campus.

Voted on the recommendation of the Vice President, Business Administration, and the President to authorize the appropriate officers of the University to advertise for bids for the construction of the faculty club, University of Minnesota, Duluth, and further to authorize the appropriate officers of the University to award contracts according to the established policy once they are satisfied that the bids come within available resources.

L. R. LUNDEN, Secretary



UNIVERSITY OF MINNESOTA
BOARD OF REGENTS
MINUTES

February 8, 1963

A meeting of the Board of Regents was held in Room 210, Coffey Hall, on the St. Paul Campus, on Friday, February 8, 1963, at 9:30 a.m.

Present: Regent Mayo, presiding; Regents Griggs, Grottum, Hess, Howard, Hughes, Johnson, Malkerson, Silha and Skyberg; and President Wilson.

Absent: Regents Gainey and Olson.

APPROVAL OF MINUTES

Voted to approve the minutes of the following meetings:

Draft of the Minutes for the meeting of January 11, 1963
Draft of the Minutes for the meeting of January 29, 1963

AMENDMENT TO MINUTES

Voted to approve the following amendment to the minutes:

May 11, 1962, sabbatical furlough for Louise A Stedman Director and Professor School of Home Economics April 1 to September 30, 1963 to read March 25 to September 21, 1963 (change in dates requested by Dr. Stedman)

PERSONNEL CHANGES

Voted to approve the following personnel changes:

Retirement

Edward E Norris Steamfitter Plant Services to retire on State Employees Retirement and Old Age Survivors and Disability Insurance effective December 26, 1962

Terminations

John H Grindlay Professor of Surgery Mayo Foundation effective December 31, 1962

Ralph O Kehle Visiting Associate Professor Geology and Mineralogy effective at time of appointment January 1, 1963

F Eugenia McClure Assistant Professor School of Nursing effective December 31, 1962

Toma Riabokin Research Associate Aeronautics and Engineering Mechanics Research Funds effective February 7, 1963 plus one month death payment allowance

Ulf Von Zahn Research Associate School of Physics Research Funds effective March 15, 1963

Anthony Gilombardo Instructor Music effective December 31, 1962
 Terry B Kinney, Jr Instructor Poultry Science effective January 31, 1963
 Jean F Ellison Instructor School of Nursing effective February 9, 1963
 Ivan W Sletten Instructor Psychiatry and Neurology without salary effective January 1, 1963
 Margaret E Chipman Instructor University High School effective December 31, 1962
 Joyce A Bickford Instructor School of Public Health Research Funds effective December 31, 1962
 Judith L Kaufman Teaching Assistant Art effective December 15, 1962
 John P McDonald Teaching Assistant Geology and Mineralogy effective December 31, 1962
 Arnold L Hamel Research Assistant Surgery Research Funds effective December 31, 1962
 Richard C Hard, Jr Medical Fellow Specialist Pediatrics without salary effective January 22, 1963
 Sandra K French Clerk Business Office effective December 7, 1962
 Helen M Lehmann Senior Account Clerk Business Office effective January 7, 1963
 Victoria L Petersen Clerk-Typist Business Office effective January 18, 1963
 Colleen F Haller Clerk-Typist Office of Civil Service Personnel effective January 10, 1963
 Jean K Pitreski Principal Secretary Department of Alumni Relations effective February 13, 1963
 Lauretta M Isaacson Clerk-Typist Animal Husbandry effective January 8, 1963
 Lynne M Langevin Clerk-Typist School of Home Economics effective January 31, 1963
 Julie A Luginbill Senior Secretary School of Public Health effective January 23, 1963
 Valda E Lesins Principal Secretary School of Public Health Laboratory of Physiological Hygiene Research Funds effective December 14, 1962 (transferred to miscellaneous payroll Aeronautical Engineering)
 Beverly Dittberner Senior Clerk-Typist Anesthesiology effective January 18, 1963
 Mary L Winkler Senior Secretary Anesthesiology effective January 14, 1963
 Ginger Wu Ling Laboratory Attendant School of Dentistry effective January 15, 1963
 Florence R Suonvieri Clerk-Typist Administration College of Education effective January 10, 1963
 Bridget A McCarthy Clerk-Stenographer Division of Education and Psychology Duluth effective June 15, 1962
 Ruth H O'Dell Senior Clerk-Typist Division of Education and Psychology Duluth effective December 12, 1962
 The following in the University of Minnesota Hospitals

		Effective Date
Ella M Coffing	Head Hospital Nurse	February 19, 1963
Dana J Cook	General Staff Nurse	January 28, 1963
Agatha Eklund*	Head Hospital Nurse	January 15, 1963
Josephine Ewing	Custodial Worker	August 31, 1962
Dorothy J Hines	Practical Nurse	January 21, 1963
Joan M Johanson	Practical Nurse	January 23, 1963
Margaret B Ness	Food Service Worker	December 26, 1962
Marjorie E Slayton	Hospital Aide	December 31, 1962
Annette L Weid	Head Hospital Nurse	January 29, 1963

* Transferred to miscellaneous payroll

Bonnie K Wood Senior Clerk-Typist Audio-Visual Extension Service effective January 21, 1963

Peggy L Stamp Senior Clerk-Typist Agricultural Extension Service effective January 14, 1963

Janice K Larson Senior Clerk-Typist Agricultural Short Courses effective January 31, 1963

Arlene E Pisila Senior Clerk-Typist University of Minnesota Program Service effective December 14, 1962

Jerome E Burke Senior Clerk Library effective January 2, 1963

Jeanne A Halverson Senior Clerk Library effective December 31, 1962

Betty J Jacobsen Secretary Minnesota Center for Philosophy of Science effective February 4, 1963

Mildred I Campbell Telephone Operator Plant Services effective December 31, 1962 (transferred to miscellaneous payroll)

Harlan C King Storehouse Stock Clerk Rosemount Research Center effective January 23, 1963

John C Kolesar Office Supervisor Rosemount Research Center effective January 8, 1963

Ruth L Laemmle Food Service Worker Shevlin Hall Food Service effective January 11, 1963

Esther F Miller Food Service Worker Shevlin Hall Food Service effective January 9, 1963

Mercedes C Ramirez Assistant Cook Coffman Union Food Service effective January 3, 1963

Annie Storrs Senior Food Service Worker Comstock Hall effective December 31, 1962

Henry Joe Cook University Health Service effective January 17, 1963

Pearl A Edmunds Food Service Worker Mayo Memorial Hospital Gift Shop and Fountain effective at time of appointment December 31, 1963 (to remain on miscellaneous payroll)

Elsie N Anderson Editorial Proofreader University Press effective December 25, 1962

Karla T Hodgson Principal Clerk University Press effective January 16, 1963

Joe L Lockridge Washman University Laundry effective January 28, 1963

Lillian A Mellgren Laundry Worker University Laundry effective January 5, 1963

Patricia Ann Nelson Keypunch Operator Numerical Analysis Center Tabulating Laboratory effective January 4, 1963

Inge F Erickson Editorial Assistant School of Physics Research Funds effective January 11, 1963

Jeanne E Bous Laboratory Attendant Medicine Research Funds effective December 21, 1962

Tuan Kuo Assistant Scientist Medicine Research Funds effective November 30, 1962

Marjorie P Hayes General Staff Nurse Pediatrics Research Funds effective January 23, 1963

Sharon A Kvislen Senior Laboratory Technician Physiology Research Funds effective January 11, 1963

David M Plum Junior Scientist School of Public Health Laboratory of Physiological Hygiene Research Funds effective January 9, 1963

L Archie Anderson Laboratory Animal Attendant Surgery Research Funds effective January 11, 1963

Dale L Dexter Principal Laboratory Animal Attendant Surgery Research Funds effective January 2, 1963

Sylvester Landrum Senior Laboratory Animal Attendant Surgery Research Funds effective December 31, 1962 (transferred to miscellaneous payroll)

Anita F B Tucker Senior Clerk-Typist Psychiatry and Neurology Research Funds effective January 11, 1963

Gladys A Stubenberg Senior Secretary Ford Foundation Economic Survey of the Upper Midwest Region Research Funds effective January 18, 1963

Elvera Pfeifer Senior Clerk-Typist University Health Service Research Funds effective December 14, 1962 (transferred to miscellaneous payroll University of Minnesota Hospitals)

Appointments

Nageswari Rajaratnam as Research Associate Minnesota School Mathematics Center Institute of Technology January 1 to June 15, 1963 at \$1,528 Term CHT25 (\$10,000 B rate)

Florence C Mead continuation of appointment as Lecturer Division of Humanities Duluth for the winter quarter of 1962-63 at \$1,166 Term CHX75 (\$4,662 B rate)

F Douglas Whiting as Clinical Instructor Medicine without salary January 1 to June 30, 1963

Marie E Manthey as Instructor School of Nursing January 2 to June 30, 1963 at \$1,543 Term CHX50 (\$6,216 A rate)

Frances P Olson as Instructor Psychiatry and Neurology with salary paid directly by Ancker Hospital January 1 to June 30, 1963

Mary E Ryan as Instructor Consumer Marketing Specialist Agricultural Extension Service January 1 to June 30, 1963 at the rate of \$6,500 Term AH75 (\$8,667 A rate)

Wayne W Schmaedeke as Research Fellow Mathematics Institute of Technology Research Funds January 1 to March 31, 1963 at \$1,800 Term CT (\$5,400 B rate)

William M Bugbee continuation of appointment as Research Fellow Plant Pathology and Botany Research Funds January 1 to June 30, 1963 at \$3,108 Term CT (\$6,216 A rate)

Roland F Line continuation of appointment as Research Fellow Plant Pathology and Botany Research Funds January 1 to June 30, 1963 at \$3,108 Term CT (\$6,216 A rate)

Amritlal C Parekh as Research Fellow Pathology Research Funds January 1 to June 30, 1963 at \$1,130 Term CHT30 (\$7,536 A rate)

Sergio Ciani continuation of appointment as Research Fellow Physiology Research Funds February 1 to March 9, 1963 at \$683 Term CTX (\$6,216 A rate)

Grace M Hallberg continuation of appointment as Research Fellow School of Public Health Research Funds January 1 to March 31, 1963 at \$1,697 Term CT (\$6,787 A rate)

J William Hanlon continuation of appointment as Research Fellow School of Public Health Research Funds January 1 to June 30, 1963 at \$3,108 Term CT (\$6,216 A rate)

Rex S Burns as Teaching Assistant English for the winter quarter of 1962-63 at \$576 Term CHX40

Robert G H Allen as Teaching Assistant Geology and Mineralogy December 16, 1962 to June 15, 1963 at the rate of \$1,080 Term BHT25

Rodney J Ikola as Teaching Assistant Geology and Mineralogy January 1 to June 15, 1963 at the rate of \$1,080 Term BHT25

James Hagan as Teaching Assistant Physiological Chemistry without salary for 25% time December 16, 1962 to June 15, 1963

Timothy T Palmer as Teaching Assistant Interdisciplinary Programs for the winter quarter of 1962-63 at \$720 Term CHX50

Jared A Brown as Teaching Assistant Speech and Theater Arts for the winter quarter of 1962-63 at \$360 Term CHX25

Pinhas Golany as Teaching Assistant Agricultural Engineering January 2 to June 15, 1963 at the rate of \$2,160 Term BH50

Russell A Steen continuation of appointment as Teaching Assistant Agronomy and Plant Genetics and Research Assistant Agronomy and Plant Genetics Research Funds January 1 to March 31, 1963 at \$1,080 Term CHT75

Robert P Israels as Teaching Assistant Dairy Industries January 1 to June 15, 1963 at the rate of \$2,160 Term BH50

Sister Mary Edward as Teaching Assistant General Education for the winter and spring quarters of 1962-63 at \$720 Term CH25

Richard B Lea as Teaching Assistant Accounting School of Business Administration for the winter and spring quarters of 1962-63 at \$1,440 Term CHX50

Mary R Parsons as Teaching Assistant General College for the winter quarter of 1962-63 at \$360 Term CH25

James G Ring as Teaching Assistant General College for the winter quarter of 1962-63 at \$480 Term CH33

Ram P Agarwal as Teaching Assistant NDEA Asian Studies for the winter and spring quarters of 1962-63 at \$720 Term CHX25

Beverly A King as Teaching Assistant University High School Project English January 16 to June 15, 1963 at the rate of \$1,080 Term BHT25

Gerald F Schnepf as Research Assistant School of Forestry January 1 to June 30, 1963 at the rate of \$1,440 Term AHT25

George B Graen continuation of appointment as Research Assistant Industrial Relations Center School of Business Administration for the winter quarter of 1962-63 at \$720 Term CHT50

Peter H Thormann as Research Assistant Industrial Relations Center School of Business Administration January 1 to June 15, 1963 at \$1,320 Term CHT50

Cornel R Jones as Research Assistant Industrial Relations Center School of Business Administration January 1 to June 15, 1963 at \$1,320 Term CHT50

Zaharat Anam as Research Assistant Anthropology Research Funds for the winter and spring quarters of 1962-63 at \$1,440 Term CHT50

Peter A Mattson as Research Assistant Botany Research Funds January 16 to June 30, 1963 at the rate of \$2,880 Term BHT50

Thomas E Sturm as Research Assistant Psychology Research Funds January 1 to June 30, 1963 at the rate of \$2,880 Term AHT50

Richard L Greenstreet as Research Assistant Statistics Research Funds January 1 to June 15, 1963 at \$1,320 Term CHT50

Jack I Rich as Research Assistant Statistics Research Funds for the winter and spring quarters of 1962-63 at \$1,440 Term CHT50

Darwin Wassink as Research Assistant Statistics Research Funds for the winter and spring quarters of 1962-63 at \$720 CHT25

John F Evert as Research Assistant Mechanical Engineering Research Funds January 16 to June 15, 1963 at \$1,200 Term CHT50

Claude deGuerlig Gaudeau as Research Assistant School of Physics Research Funds January 7 to June 15, 1963 at \$1,404 Term CHT55

Alan E Hedin as Research Assistant School of Physics Research Funds January 16 to June 15, 1963 at \$1,320 Term CHT55

Kshounish C Nag as Research Assistant Agronomy and Plant Genetics Research Funds January 1 to June 30, 1963 at the rate of \$1,440 Term AHT25

Raghibir Singh continuation of appointment as Research Assistant Agronomy and Plant Genetics Research Funds January 1 to March 31, 1963 at \$720 Term CHT50

Muhammad R Karim as Research Assistant Animal Husbandry Research Funds January 2 to March 31, 1963 at \$720 Term CHT50

Haven D Kaslow as Research Assistant Agricultural Biochemistry Research Funds January 16 to June 30, 1963 at the rate of \$2,880 Term AHT50

Richard D Dyrland continuation of appointment as Research Assistant School of Forestry Research Funds January 1 to March 15, 1963 at \$600 Term CHT50

Allen H Schacht as Research Assistant School of Forestry and Research Funds January 2 to June 30, 1963 at the rate of \$2,880 Term AHT50

Lawson L Winton continuation of appointment as Research Assistant School of Forestry Research Funds April 1 to June 30, 1963 at \$720 Term CHT50

David B Sauer continuation of appointment as Research Assistant Plant Pathology and Botany Research Funds February 1 to June 30, 1963 at \$1,200 Term CHT50

Gurmail S Thind as Research Assistant Microbiology Research Funds January 1 to April 30, 1963 at \$1,114 Term CHT58

Kenneth E Sjodin as Research Assistant Physiology Research Funds January 2 to June 30, 1963 at \$2,160 Term CHT75

Damodar R Deshmukh as Research Assistant Veterinary Bacteriology and Public Health Research Funds January 1 to June 30, 1963 at \$1,440 Term CHT50

August W Haugan, Jr as Research Assistant College of Education Research Funds February 1 to March 31, 1963 at \$480 Term CHT50 and April 1 to June 30, 1963 at \$360 Term CHT25

Jerome C Fluth as Medical Fellow Specialist Physical Medicine and Rehabilitation January 1 to June 30, 1963 at the rate of \$4,950 plus tuition and fees Term A

James F Cumming as Medical Fellow Anesthesiology January 7 to June 30, 1963 at the rate of \$3,000 plus tuition and fees Term A

Rodney T H Nixon as Medical Fellow Surgery Minneapolis General Hospital Fellowships January 1 to June 30, 1963 at \$1,500 plus tuition and fees Term CT

Donna J Angel as Clerk Business Office January 9 to June 30, 1963 at the rate of \$2,664 Term A

Janice Barrow as Clerk Business Office January 10 to June 30, 1963 at the rate of \$2,664 Term A

Sharon L Gamble as Clerk Business Office January 4 to June 30, 1963 at the rate of \$2,664 Term A

Oscar C Peterson as Property Inventory Clerk Business Office December 26, 1962 to June 30, 1963 at the rate of \$4,620 Term A

Judith A Clarcken as Clerk-Typist Office of Civil Service Personnel January 1 to June 30, 1963 at the rate of \$2,772 Term A

Patrick H O'Connor as Clerk General Storehouse January 8 to June 30, 1963 at the rate of \$2,664 Term A

Anne M Thomas as Student Personnel Worker Office of the Dean of Students Student Activities Bureau and Office of the Adviser to Foreign Students January 1 to June 30, 1963 at the rate of \$5,400 Term AX

Karen E Broers as Clerk Office of Admissions and Records January 4 to June 30, 1963 at the rate of \$2,664 Term A

Barbara L Mills as Clerk Office of Admissions and Records December 31, 1962 to June 30, 1963 at the rate of \$2,664 Term A

Kathleen H Brekke as Clerk-Typist Office of Admissions and Records St Paul January 2 to June 30, 1963 at the rate of \$2,772 Term A

Vivian M Eccleston as Senior Secretary Department of University Relations January 1 to June 30, 1963 at the rate of \$3,792 Term A

Jean B Ford as Clerk-Typist Minnesota Alumni Fund December 26, 1962 to June 30, 1963 at the rate of \$2,772 Term A

Donald I Frisbie as Senior General Mechanic St Anthony Falls Hydraulic Laboratory January 16 to June 30, 1963 at the rate of \$4,992 Term AT

Lawrence S Olson as Electronics Mechanic School of Physics December 26, 1962 to June 30, 1963 at the rate of \$4,992 Term AT

Donovan E Ranstrom as Utility Man School of Physics December 20, 1962 to June 30, 1963 at the rate of \$3,648 Term AT

Zoe Z C Nau as Clerk-Typist Law School January 14 to June 30, 1963 at the rate of \$2,772 Term A

Joyce B Zandlo as Clerk-Typist Administration College of Education January 14 to June 30, 1963 at the rate of \$2,772 Term A

Mary M Becker as X-Ray Technician University of Minnesota Hospitals February 1 to June 30, 1963 at the rate of \$3,948 Term AT

Margaret G Flintrop as School Nurse Southern School of Agriculture January 1 to March 31, 1963 at the rate of \$1,080 Term DHX60 (\$1,800 D rate)

Patricia A Anderson as Senior Clerk-Typist Agricultural Short Courses January 10 to June 30, 1963 at the rate of \$3,372 Term AT

Angeline J Campbell as Senior Clerk Library January 14 to June 30, 1963 at the rate of \$3,240 Term A

Janet A Krieger as Junior Librarian Library January 1 to June 30, 1963 at the rate of \$5,616 Term A

Karen E Montgomery as Senior Clerk Library January 16 to June 30, 1963 at the rate of \$3,240 Term A

Richard L Raff as Senior Clerk Library January 3 to June 30, 1963 at the rate of \$3,240 Term A

Joel A Beale as Library Assistant Library St Paul January 1 to June 30, 1963 at the rate of \$4,104 Term A

Joan C Ford as Key Punch Operator Experiment Station Institute of Agriculture January 1 to March 31, 1963 at \$780 Term CT (\$3,120 A rate)

Porter H Huddleson as Assistant Herdsman Northeast Experiment Station January 1 to June 30, 1963 at the rate of \$3,948 Term A

Virgil R Curtis as Building Caretaker Plant Services January 1 to June 30, 1963 at the rate of \$3,504 Term A

Ervin C Korte as Building Caretaker Plant Services January 16 to June 30, 1963 at the rate of \$3,504 Term A

Roger L Willen as Window Washer Plant Services January 4 to June 30, 1963 at the rate of \$3,648 Term A

Joyce P Travis as Salad Maker Comstock Hall January 1 to June 30, 1963 at the rate of \$2,880 Term A

Helen F Neujahr as Clerk-Typist Student Unions Student Center St. Paul Campus January 8 to June 30, 1963 at the rate of \$2,772 Term A

Susannah H Anderson as Senior Clerk Nicholson Hall Bookstore December 28, 1962 to June 30, 1963 at the rate of \$3,240 Term A

Donald M Oberg as Senior Food Service Supervisor Vending Machines Duluth January 1 to June 30, 1963 at the rate of \$4,104 Term A

Lester L Metz as Printing Services Coordinator Printing Department January 1 to June 30, 1963 at the rate of \$8,328 Term A

Evelyn L O'Borsky as Senior Clerk-Typist Printing Department January 14 to June 30, 1963 at the rate of \$3,372 Term A

Sherril Rye as Clerk-Typist Printing Department December 11, 1962 to June 30, 1963 at the rate of \$3,000 Term A

Elizabeth L D Willems as Senior Clerk-Typist Food Stores January 1 to June 30, 1963 at the rate of \$1,686 Term AHX50 (\$3,372 A rate)

Sharon L Sanders as Senior Clerk-Typist NDEA Foreign Language Institute January 7 to June 30, 1963 at the rate of \$3,372 Term AT

Niels H Andersen as Laboratory Technical Assistant School of Chemistry Research Funds December 17, 1962 to June 30, 1963 at \$1,898 Term CT (\$3,504 A rate)

Josette B Filippi as Senior Clerk-Typist School of Physics Research Funds December 19, 1962 to June 30, 1963 at the rate of \$3,372 Term ATX

Jean G Gortner as Senior Laboratory Technician Trainee School of Physics Research Funds January 3 to June 30, 1963 at the rate of \$3,648 Term AT

Donald V Swedberg continuation of appointment as Laboratory Technologist Entomology Fisheries and Wildlife Research Funds January 1-18, 1963 at \$260 Term CT (\$4,992 A rate); terminated

Laura R Sweney as Junior Scientist Anatomy Research Funds January 1 to June 30, 1963 at \$2,598 Term CT (\$5,196 A rate)

Lily A Jones continuation of appointment as Senior Laboratory Technician Microbiology Research Funds March 1 to June 30, 1963 at \$1,368 Term CT (\$4,104 A rate)

Aleksanders Zasters as Laboratory Animal Attendant Microbiology Research Funds December 26, 1962 to June 30, 1963 at \$1,805 Term CTX (\$3,504 A rate)

Rosemarie Geurts continuation of appointment as Assistant Scientist Medicine Research Funds January 1 to June 30, 1963 at \$3,036 Term CT (\$6,072 A rate)

Leland Hong continuation of appointment as Junior Scientist Medicine Research Funds January 1 to June 30, 1963 at \$3,036 Term CT (\$6,072 A rate)

Catherine Johnson as Laboratory Attendant Medicine Research Funds January 1 to June 30, 1963 at \$1,278 Term CT (\$2,556 A rate)

John A Johnson continuation of appointment as Associate Scientist Medicine Research Funds January 1 to June 30, 1963 at \$3,708 Term CT (\$7,392 A rate)

Lydia Johnson continuation of appointment as Secretary Medicine Research Funds January 1 to June 30, 1963 at \$1,579 Term CHT80 (\$3,948 A rate)

Michael Keprios as Junior Scientist Medicine Research Funds November 5, 1962 to June 30, 1963 at \$2,001 Term CHT50 (\$6,072 A rate)

William Kreykes continuation of appointment as Senior Laboratory Technician Obstetrics and Gynecology Research Funds January 1 to June 30, 1963 at \$1,602 Term CHT75 (\$4,272 A rate)

Nell G Stein continuation of appointment as Junior Scientist Medicine Research Funds January 1 to June 30, 1963 at \$2,598 Term CT (\$5,196 A rate)

Carolyn R Sutherland continuation of appointment as Senior Laboratory Technician Medicine Research Funds January 1 to June 30, 1963 at \$1,896 Term CT (\$3,792 A rate)

Eileen R Torborg continuation of appointment as Junior Scientist Medicine Research Funds January 1 to June 30, 1963 at \$2,598 Term CT (\$5,196 A rate)

Mary K Weimer continuation of appointment as Junior Scientist Medicine Research Funds January 1 to June 30, 1963 at \$3,106 Term CT (\$6,312 A rate)

Sarah J Wilburn continuation of appointment as Laboratory Attendant Medicine Research Funds January 1 to June 30, 1963 at \$1,560 Term CT (\$3,120 A rate)

Jean H Kubon continuation of appointment as Junior Scientist Obstetrics and Gynecology Research Funds January 1 to June 30, 1963 at \$2,367 Term CHT75 (\$6,312 A rate)

Barbara A Ludtke continuation of appointment as Secretary Obstetrics and Gynecology Research Funds January 1 to June 30, 1963 at \$1,974 Term CT (\$3,948 A rate)

Henry E Baur continuation of appointment as Principal Laboratory Animal Attendant Pathology Research Funds January 1 to March 31, 1963 at \$1,248 Term CT (\$4,992 A rate)

Linda M Cadotte continuation of appointment as Principal Laboratory Animal Attendant Pathology Research Funds January 1 to March 31, 1963 at \$1,200 Term CT (\$4,800 A rate)

Judith A Hruz continuation of appointment as Senior Laboratory Technician Pathology Research Funds February 1 to June 30, 1963 at \$1,580 Term CT (\$3,792 A rate)

Jeanne McNally continuation of appointment as Senior Laboratory Technician Pathology Research Funds January 1 to March 31, 1963 at \$948 Term CT (\$3,792 A rate)

Michio Shimizu continuation of appointment as Laboratory Attendant Pathology Research Funds September 1, 1962 to June 30, 1963 at \$1,833 Term CHT75 (\$2,772 A rate)

Leland G Hansen as Laboratory Technologist Pediatrics Research Funds December 26, 1962 to February 28, 1963 at \$873 Term CT (\$4,800 A rate)

Audrey S Koshiba as Laboratory Technician Pediatrics Research Funds January 2 to June 30, 1963 at \$1,518 Term CT (\$3,120 A rate)

Charlotte Rothnem continuation of appointment as Senior Laboratory Technician Pediatrics Research Funds February 1-28, 1963 at \$370 Term CT (\$4,440 A rate)

Marguerite V Church as Laboratory Technologist Physiology Research Funds January 7 to April 30, 1963 at \$1,527 Term CT (\$4,800 A rate)

Mary L Howze continuation of appointment as Senior Clerk-Typist Physiology Research Funds March 1 to April 30, 1963 at \$632 Term CT (\$3,792 A rate)

Beverley Ann Moulton continuation of appointment as Senior Clerk-Typist Physiology Research Funds March 1 to June 30, 1963 at \$1,124 Term CT (\$3,372 A rate)

Margaret M Olson as Laboratory Technologist Physiology Research Funds January 15 to June 30, 1963 at \$2,218 Term CT (\$4,800 A rate)

Charlene M Olson continuation of appointment as Senior Clerk-Typist School of Public Health Research Funds January 1 to June 30, 1963 at \$1,686 Term CT (\$3,372 A rate)

L Archie Anderson continuation of appointment as Laboratory Animal Attendant Surgery Research Funds January 1-11, 1963 at \$124 Term CT (\$3,648 A rate); terminated

Harriet I Brown as Junior Scientist Surgery Research Funds January 3 to June 30, 1963 at \$2,559 Term CT (\$5,196 A rate)

Robert W Benson as Senior Laboratory Technician Laboratory Medicine Research Funds December 17, 1962 to February 28, 1963 at \$790 Term CT (\$3,792 A rate)

Grace E Engler continuation of appointment as Junior Scientist Laboratory Medicine Research Funds January 1 to June 30, 1963 at \$2,808 Term CT (\$5,616 A rate)

Donald C Libby continuation of appointment as Senior Laboratory Animal Attendant Radiology Research Funds January 1 to March 31, 1963 at \$1,110 Term CT (\$4,440 A rate)

Claudia S Durigan continuation of appointment as Laboratory Technologist Physiological Chemistry Research Funds January 1 to June 30, 1963 at \$2,496 Term CT (\$4,992 A rate)

James H Grina continuation of appointment as Junior Scientist Physiological Chemistry Research Funds January 1 to June 30, 1963 at \$2,598 Term CT (\$5,196 A rate)

Erika L Koppitz as Senior Secretary Anesthesiology January 2 to June 30, 1963 at the rate of \$3,792 Term A

Barbara E Lee continuation of appointment as Senior Laboratory Attendant Microbiology Research Funds March 1 to June 30, 1963 at \$1,264 Term CT (\$3,792 A rate)

Mary A Christoff as Senior Laboratory Technician Veterinary Bacteriology and Public Health Research Funds January 4 to June 30, 1963 at \$1,853 Term CT (\$3,792 A rate)

Karen L Raff as Senior Laboratory Technician Veterinary Bacteriology and Public Health Research Funds December 17, 1962 to June 30, 1963 at \$2,054 Term CT (\$3,792 A rate)

Shirley M Andersen continuation of appointment as Laboratory Technician Veterinary Medicine and Clinics Research Funds January 1 to June 30, 1963 at \$1,560 Term CT (\$3,120 A rate)

Joanne D Nelson continuation of appointment as Senior Clerk-Typist Veterinary Medicine and Clinics Research Funds June 1-30, 1963 at \$292 Term CT (\$3,504 A rate)

Janice K Dailey continuation of appointment as Laboratory Technician School of Dentistry Research Funds January 1 to June 30, 1963 at \$1,560 Term CT (\$3,120 A rate)

Nancy A Nyquist continuation of appointment as Laboratory Technologist School of Dentistry Research Funds January 1 to June 30, 1963 at \$2,400 Term CT (\$4,800 A rate)

Louella M Grayson as Senior Secretary Ford Foundation Economic Survey of the Upper Midwest Region January 7 to June 30, 1963 at the rate of \$3,792 Term AT

Edwin C Maulding as Senior Secretary Ford Foundation Economic Survey of the Upper Midwest Region January 16 to June 30, 1963 at the rate of \$3,792 Term AT

Myrna G Smith as Principal Secretary Peace Corps January 1 to May 31, 1963 at \$1,780 Term CT (\$4,272 A rate)

Thomas M Donndelinger as recipient of a Charles and Ellora Alliss Educational Foundation Scholarship of \$400 for the winter and spring quarters of 1962-63 College of Science Literature and the Arts

Linda M Landon as recipient of a Charles and Ellora Alliss Foundation Scholarship of \$240 for the winter quarter of 1962-63 German

Thomas M Gmitro as recipient of an American Institute of Chemical Engineering Scholarship of \$200 for the winter and spring quarters of 1962-63 Civil Engineering

Deloris J Hoff as recipient of an American Legion Scholarship of \$50 for the winter quarter of 1962-63 Morris

Carl B Erling as recipient of a Ray V Arnold Scholarship of \$238 for the winter quarter of 1962-63 College of Medical Sciences

The following as recipients of Walter D Boutell Memorial Scholarships December 29, 1962 to June 30, 1963 College of Medical Sciences

	Amount
Roger Dreyling	\$277
Harvey Rosen	170
Dale Von Ruden	170
Michael E Yablonski	170

Robert A Nordstrom as recipient of an Otto Bremer Foundation Special Scholarship of \$500 for 1962-63 Electrical Engineering

Diane C Kittelson and Robin F Atkins as recipients of Bridge Marathon Club of Morris Scholarships of \$100 each January 3 to March 22, 1963 Morris

The following as recipients of Cargill Foundation Law Scholarships December 27, 1962 to June 30, 1963

	Amount
John M Broeker	\$300
Donald F Hunter	240
Rolf T Nelson	240

The following as recipients of Martin Wm Case and George Leland Case Medical Scholarships December 29, 1962 to June 30, 1963

	Amount
William K Brokken	\$170
David J Hide	139
David J Lamusga	170

Carl B Erling as recipient of a Class of 1894 Medical Education Scholarship of \$500 December 29, 1962 to July 30, 1963

Gary M Soule as recipient of a Nina M Cohen Scholarship of \$200 for the winter and spring quarters of 1962-63 Sociology

The following as recipients of John Cowles Foundation Fellowships of \$150 each December 30, 1962 to June 30, 1963 Graduate School

Elsaid A G Ashour	Yusaf J Husain
Surinder M Bhardwaj	Manohar L Muttreja
Narendra K Bhatia	Khosrow Riggi
Mohamed Y Bhatti	Satwant S Rihal

Gerald W Jacobson as recipient of a Dairy Husbandry Scholarship of \$200 for 1962-63 College of Agriculture Forestry and Home Economics

Jerome G Johnson as recipient of an Edward E Davidson Memorial Scholarship of \$265 for the winter and spring quarters of 1962-63 College of Medical Sciences

The following as recipients of Caleb Dorr Scholarships for the winter term of 1962-63 Northwest School of Agriculture

	Amount
Anthony R Obowa	\$ 36
Arthur A Sheldon	150
Richard A Sheldon	150

The following as recipients of Caleb Dorr Special Achievement Awards for the winter quarter of 1962-63 College of Agriculture Forestry and Home Economics

	Amount
Joseph D Erickson	\$60
Sharon F Peterson	50
James L Sparke	75
Harlow H Wolkow	50

Michael E Hoene as recipient of a Duluth Campus Scholarship of \$80 January 3 to March 23, 1963

W P Maney as recipient of a Duluth Campus (J C Campbell Co) Scholarship of \$100 January 3 to March 23, 1963

Melvin R Frantz and Thomas N Blair as recipients of Duluth Campus (Homecroft P T A) Scholarships of \$50 each January 3 to March 23, 1963

Judy Harvala as recipient of a Duluth Campus (Park Rapids Community) Scholarship of \$225 for 1962-63

Kenneth Schoessler as recipient of a Duluth Campus (Park Rapids Community) Scholarship of \$200 for 1962-63

David D Williamson as recipient of a Duluth Campus (State Indian) Scholarship of \$300 January 3 to March 23, 1963

Carl Gawboy as recipient of a Duluth Campus (State Indian) Scholarship of \$350 January 3 to March 23, 1963

Beverly Korpela as recipient of a Duluth Campus (United Steel Workers of America Local 5296) Scholarship of \$350 for 1962-63

Larry J Hanson as recipient of a Farmers Union ABC Scholarship of \$50 for the winter quarter of 1962-63 Morris

The following as recipients of Farmers Union ABC Scholarships for the winter quarter tuition and incidental fees in the amount of \$100 each Morris

Donald T Maki
Lynden W Nelson

Howard M Nielsen
Emmaline C Schlueter

Mary A Anilyan as recipient of a Foreign Student Emergency Aid and Scholarship of \$50 for the winter quarter of 1962-63 School of Home Economics

Joseph Berhan as recipient of a Foreign Student Emergency Aid and Scholarship of \$545.34 for the winter and spring quarters of 1962-63 Aeronautical Engineering

Charles O Chikeka as recipient of a Foreign Student Emergency Aid and Scholarship of \$250 for the winter and spring quarters of 1962-63 Political Science

Nuridin Razak as recipient of a Foreign Student Emergency Aid and Scholarship of \$545.34 for the winter and spring quarters of 1962-63 School of Chemistry

The following as recipients of General Scholarships of \$100 each January 3 to March 22, 1963 Morris

Connie L Bunge
Ronald A Carlson

Robert H Ophaug

The following as recipients of General Scholarships January 3 to March 22, 1963 Morris

	Amount
Harold Fletcher	\$100
Larry J Hanson	50
James H L Johnson	100
Patricia Larson	100
Leonard Munstermann	100

The following as recipients of Graduate School Tuition Scholarships January 3 to March 22, 1963

Marco G Bicchieri	Anthropology
William Bonifield	Economics
Emilie Buchwald	English
Sandra C Chai	Art
Carolyn F Dolliff	History
Pauline Kelton	Library Science
Robert G Kraft	English
Pearl M Linde	School of Home Economics
John H McAndrews	Botany
Robert C Melchior	Botany
James T Plunkett	English
Howard A Rosenberg	History
Steven N Sheldon	Political Science
Jerry S Zeigbaum	Art

Donald L Van Hulzen recipient of a W K Kellogg Foundation Fellowship to receive a supplement of \$1,625.02 February 1 to September 15, 1963 School of Public Health

Patricia M Lines as recipient of a Law Firm Scholarship of \$120 December 27, 1962 to March 30, 1963

Dennis Clausen and Allen E Winkelmann as recipients of Lions Scholarships for the winter quarter of 1962-63 tuition and incidental fees in the amount of \$100 each Morris

Prabhu D Sharma recipient of a Julia Marshall Scholarship to receive a supplement of \$5 for the winter quarter of 1962-63 Political Science

Leslie Wolff as recipient of a John Miller Memorial Scholarship of \$26.52 for 1962-63 West Central School Morris

Lee Sonsteng as recipient of a Minnesota Alumni Scholarship of an estimated amount of \$300 December 19, 1962 to August 1, 1963 American Studies

Alice Coudroglou as recipient of a Minnesota Association for Mental Health Scholarship of \$918 January 1 to June 15, 1963 School of Social Work

Glen J Skovholt as recipient of a Minnesota Citizenship Clearing House Scholarship of \$300 January 1 to March 15, 1963 School of Business Administration

Robert A Peterson as recipient of a Minnesota Institute of Technology Alumni Scholarship of \$200 December 29, 1962 to June 30, 1963 Electrical Engineering

Gary B Hanson as recipient of a Minnesota Lathing and Plastering Scholarship of \$300 January 11 to March 15, 1963 School of Architecture

James Ludowese as recipient of a Morris Kiwanis Club Scholarship for the winter quarter of 1962-63 tuition and incidental fee in the amount of \$75

LeRoy A Ras as recipient of a Morris Kiwanis Club Scholarship for the winter quarter of 1962-63 tuition and incidental fee in the amount of \$100

Bernard J Simon as recipient of a Peter Norden Memorial Scholarship of \$600 for the winter quarter of 1962-63 School of Dentistry

Guy E O'Grady as recipient of a Dr Harry Oerting Memorial Scholarship of \$170 December 29, 1962 to June 30, 1963 College of Medical Sciences

Betty J Macnab as recipient of a Dr Harry Oerting Memorial Scholarship of \$230 December 29, 1962 to June 30, 1963 College of Medical Sciences

The following as recipients of Office of Vocational Rehabilitation Traineeships of \$400 each June 11, 1962 to June 10, 1963 Physical Medicine and Rehabilitation

Betty E Brandt
Judith R Johnson
Judith B Martinson

Diane K Moschogianis
Ruth M Purtils
Marcia J Uttley

The following as recipients of Office of Vocational Rehabilitation Occupational Therapy Traineeships of \$200 each September 1, 1962 to August 31, 1963 Physical Medicine and Rehabilitation

Eileen S Auerbach
Catherine A Cairncross
Judith C D'Andrea

Patricia A DeMars
Beverly J Paurus
William L Pederson

The following as recipients of Clarence A Orendorff Scholarships January 2 to June 30, 1963 College of Medical Sciences

	Amount
Thomas M Clifford	\$170
Nils R Forsen	340
Richard Lund	170
David G Piegras	170

Philip R Olson and Roger A Stark as recipients of Runestone Electric Association Scholarships for the winter quarter of 1962-63 tuition and incidental fees in the amount of \$100 each Morris

Zigrida A Ansmits as recipient of an Augustus L Searle Scholarship of \$200 for the winter and spring quarters of 1962-63 College of Agriculture Forestry and Home Economics

Douglas R Rainbow as recipient of a Social Service Council Scholarship of \$160 for 1962-63 Sociology

Patricia M Scott as recipient of a Social Service Council Scholarship of \$250 December 30, 1962 to June 30, 1963 College of Science Literature and the Arts

Heddi O Sedano as recipient of a Squibb Institute Research on Fungizone in Orabase Grant-in-Aid of \$300 January 1 to March 31, 1963 School of Dentistry

Gwen S Nelson as recipient of a Stevens Brothers Foundation Scholarship of \$350 December 27, 1962 to March 30, 1963 College of Medical Sciences

James R Bostic as recipient of a Joyce A Swan Scholarship of \$200 for the winter quarter of 1962-63 School of Journalism

Marilyn J Benson as recipient of a Tozer Foundation Graduate Scholarship of \$1,000 December 30, 1963 to June 30, 1964

Patrick L Hudson recipient of a Tozer Foundation Inc Undergraduate Scholarship to receive a supplement of \$9.50 for the winter quarter of 1962-63 College of Agriculture Forestry and Home Economics

Edward F Haskins as recipient of a United States Public Health Service Predoctoral Fellowship of \$2,000 December 18, 1962 to December 17, 1963 Zoology

Edith W Morean as recipient of a United States Public Health Service Predoctoral Fellowship of \$2,000 January 2, 1963 to January 1, 1964 Zoology

Leonard F Lampert as recipient of a United States Public Health Service Training Program in Biochemistry Fellowship of \$1,200 December 16, 1962 to June 15, 1963 Agricultural Biochemistry

Donald B Youel as recipient of a United States Public Health Service Research Training of Medical Students Fellowship of \$1,650 January 1 to June 30, 1963 College of Medical Sciences

Roger C Herdman recipient of a United States Public Health Service Training in Immunology Fellowship to receive a supplement of \$3,800 January 1 to June 30, 1963

Herbert J Hatcher as recipient of a United States Public Health Service Training Program in Microbiology Microbial Physiology and Molecular Genetics Fellowship of \$720 January 1 to June 30, 1963

Terry C Johnson recipient of a United States Public Health Service Training in Allergy Infectious Diseases and Microbiology Fellowship to receive a supplement of \$432 January 1 to June 30, 1963

Patricia S Toyama as recipient of a United States Public Health Service Program in Microbiology Microbial Physiology and Molecular Genetics Fellowship of \$480 February 1 to March 31, 1963

Muhammad R Karim and Phyllis M Webb as recipients of United States Public Health Service Training Program in Microbiology Microbial Physiology and Molecular Genetics Fellowships of \$1,440 each January 1 to June 30, 1963

David M Brown as recipient of a United States Public Health Service Training Program in Research Pediatrics Fellowship of \$2,500 January 1 to June 30, 1963

Richard C Hard, Jr as recipient of a United States Public Health Service Training in Clinical Cardiology Fellowship of \$2,654 January 23 to June 30, 1963 Pediatrics

George R Bloom as recipient of a United States Public Health Service Training and Recruitment Grant of \$3,000 January 1 to December 31, 1963 Physiology

The following as recipients of United States Public Health Service Training in Public Health Nursing Scholarships January 3 to August 24, 1963 School of Public Health

	Amount
Esther L Bartel	\$1,553.41
Marjorie R Berg	1,553.41
Marilyn J Gomon	1,786.41
Ella K Harmon	1,938.00
Jeanette H Pattinson	1,553.41
Luann F Wahls	1,553.41

The following as recipients of United States Public Health Service Training in Public Health Nursing Scholarships January 3 to June 15, 1963 School of Public Health

	Amount
Dana L Gartner	\$1,366.62
Claudette M Ince	1,530.62
Sandra I Overdahl	1,366.62
Joann D Reinhartsen	1,366.62

Earle R Evavold as recipient of a United States Public Health Service Training in Radiological Health Scholarship of \$2,174.59 January 3 to August 24, 1963 School of Public Health

Mary E Hamlin as recipient of a United States Public Health Service Training in Health Education Scholarship of \$1,366.62 January 3 to June 15, 1963 School of Public Health

Kenneth Kary as recipient of a United States Public Health Service Training in Radiological Health Scholarship of \$2,241.38 January 3 to June 15, 1963 School of Public Health

Aldo R Castaneda as recipient of a United States Public Health Service Cancer Training Grant of \$2,000 March 1 to June 30, 1963 Surgery

William R Meeker as recipient of a United States Public Health Service Cancer Training Grant of \$2,400 January 1 to June 30, 1963 Surgery

Viola F Debord as recipient of a United States Public Health Service Professional Nurse Traineeship of \$2,625 January 3 to August 24, 1963 and September 23 to December 14, 1963 School of Nursing

Eileen M Heaser as recipient of a United States Public Health Service Professional Nurse Traineeship of \$1,100 January 3 to June 15, 1963 School of Nursing

Sandra M Long recipient of a United States Public Health Service Professional Nurse Traineeship to receive a supplement of \$50 June 8-15, 1963 School of Nursing

Evelyn S Matsushita as recipient of a United States Public Health Service Professional Nurse Traineeship of \$300 March 17 to April 30, 1963 School of Nursing

Lavina M Robins as recipient of a United States Public Health Service Professional Nurse Traineeship of \$687 January 3 to March 23, 1963 School of Nursing

Marjorie E Uelmen as recipient of a United States Public Health Service Professional Nurse Traineeship of \$300 March 17 to April 30, 1963

Carol J Willits as recipient of a United States Public Health Service Professional Nurse Traineeship of \$2,100 January 3 to August 24, 1963 and September 23 to December 14, 1963

John J Raich recipient of a United States Public Health Service Pathology Training Grant to receive a supplement of \$1,000 January 1 to December 31, 1963 Laboratory Medicine

George J Barry as recipient of a United States Public Health Service Graduate Training in Psychiatry Fellowship of \$1,800 January 1 to June 30, 1963

Steven J Sjoldal as recipient of a United States Public Health Service Training Program in Research on Cancer of the Alimentary Tract Fellowship of \$550 January 14 to May 31, 1963 School of Dentistry

William D Smith recipient of a United States Public Health Service Training Teachers of Emotionally Disturbed and Socially Maladjusted Children Fellowship to receive a supplement of \$436.08 December 15, 1962 to August 15, 1963 Educational Psychology

Patricia P Will as recipient of a United States Public Health Service Training Teachers of Emotionally Disturbed and Socially Maladjusted Children Fellowship of \$1,216 January 3 to August 15, 1963 Educational Psychology

Richard J Fox as recipient of a University of Minnesota Intercollegiate Athletic Grant-in-Aid of an estimated amount of \$531.70 January 1 to June 15, 1963 School of Physics

Leonard P Lilyholm recipient of a University of Minnesota Intercollegiate Athletic Grant-in-Aid to receive a supplement of \$192 for 1962-63 College of Science Literature and the Arts

Richard E Morrow as recipient of a University of Minnesota Intercollegiate Athletic Grant-in-Aid of an estimated amount of \$779 January 3 to June 15, 1963 College of Education

The following as recipients of University of Minnesota Intercollegiate Athletic Grants-in-Aid January 3 to June 15, 1963

	Amount
John L Gorny	College of Science Literature and the Arts \$530.00
Thomas J McCoy	College of Education 460.00
Roy W Nystrom	College of Science Literature and the Arts 450.00
Edward O Oberg	Institute of Technology 251.70
Joseph G Pollack	General College 250.00

Richard J Timm recipient of a University of Minnesota Intercollegiate Athletic Grant-in-Aid to receive a supplement of \$506 for 1962-63 College of Education

Fulton J Weckman recipient of a University of Minnesota Intercollegiate Athletic Grant-in-Aid to receive a supplement of \$260 for 1962-63 College of Education

James D Wilson as recipient of a University of Minnesota Intercollegiate Athletic Grant-in-Aid of an estimated amount of \$530 January 3 to June 15, 1963 Speech and Theater Arts

Pramila Menon recipient of a University of Minnesota International Exchange Scholarship to receive a supplement of \$1,436 for 1962-63

Ralph W Bergstrom as recipient of a University of Minnesota Medical Scholarship of \$170 June 1, 1962 to July 30, 1963 College of Medical Sciences

Jerry M Bergstein as recipient of a University of Minnesota Medical Scholarship of \$145 June 1, 1962 to July 30, 1963 College of Medical Sciences

Ralph Nelson, Jr as recipient of a West Central School of Agriculture Alumni Scholarship for the winter quarter of 1962-63 tuition and incidental fee in the amount of \$100 Morris

John Bergman recipient of a Henry L Williams Memorial Scholarship to receive a supplement of \$109 for 1962-63 College of Science Literature and the Arts

Darrell C DeVilliers, Jr as recipient of a Women's Auxiliary to Ramsey County Medical Society Scholarship of \$250 for the winter and spring quarters of 1962-63 Medicine

Special Appointments

Izaac M Kolthoff as Professor School of Chemistry Research Funds January 1 to February 28, 1963 at \$2,056 per month (69 years of age)

Jacquelyn C Senst as Clerk-Typist Southwest Experiment Station beginning December 17, 1962 at \$1.33 per hour (husband Charles G Senst Farm Laborer Southwest Experiment Station Term A)

Promotions and Transfers

Gordon B Davis from Assistant Professor Accounting School of Business Administration at \$9,400 Term B to Associate Professor without change in salary rate or term beginning December 16, 1962

Luther J Pickrel Associate Professor Extension Economist Public Affairs Agricultural Extension Service at \$11,900 Term A to continue to serve as Associate Professor Peace Corps at the rate of \$16,200 Term A January 16 to June 30, 1963

Rene V Dawis Visiting Associate Professor Industrial Relations Center School of Business Administration Research Funds at \$10,700 Term AT to serve for 33% of time as Visiting Associate Professor Industrial Relations without change in salary rate or term March 16 to June 30, 1963

Charles D Kavaloski from Research Assistant School of Physics Research Funds at \$2,376 Term BHT55 to Research Associate School of Physics Research Funds and Lecturer School of Physics at \$3,340 Term CT (\$5,652 B rate) January 7 to June 15, 1963

James W Yackel from Instructor Mathematics College of Science Literature and the Arts and Research Fellow Mathematics Research Funds at \$2,350 Term BHX50 (\$4,700 B rate) to Research Fellow Mathematics Research Funds without change in salary rate or term March 16 to June 15, 1963

John M Belec Research Assistant Agricultural Biochemistry Research Funds at \$2,880 Term AHT50 to serve as Instructor Agricultural Biochemistry at \$777 Term CH50 (\$6,216 A rate) March 16 to June 15, 1963

Harold B Kaiser from Medical Fellow Medicine with salary paid directly by the Veterans Administration Hospital to Clinical Instructor without salary October 1, 1962 to June 30, 1963

David C Johnson Instructor Student Teaching College of Education at \$2,331 Term BH50 to serve in addition as Instructor University High School at \$648 for 25% time January 16 to June 15, 1963

David L Giese Instructor General College at \$6,800 Term B to continue to serve as Instructor General Education for 50% of time without change in salary rate or term March 16 to June 15, 1963

Gerald L Lizotte Teaching Assistant University Elementary School at \$1,080 Term BH25 to serve in addition as Instructor University High School at \$429 for 15% time (\$4,940 B rate) January 1 to June 15, 1963

Rolan E Anderson from Research Fellow Agronomy and Plant Genetics Research Funds at \$1,036 Term CT (\$6,216 A rate) November 1 to December 31, 1962 to Instructor at \$777 Term CHT50 (\$6,216 A rate) January 1 to March 31, 1963

Ignacio E Fortuny from Medical Fellow Specialist Medicine Research Funds at \$3,720 Term CT (\$5,580 A rate) July 1, 1962 to February 28, 1963 to Instructor at \$1,820 Term CT (\$6,240 A rate) December 15, 1962 to March 31, 1963

James K Winfrey Instructor College of Education Research Funds at \$3,750 Term BHT50 (\$7,500 B rate) to serve in addition as Research Fellow Office of the Dean of Students Student Counseling Bureau at the rate of \$2,331 Term BHT50 (\$4,662 B rate) January 1 to June 15, 1963

Olgerts L Karklins Teaching Assistant Geology and Mineralogy at \$1,080 Term BH25 to continue to serve as Research Assistant Geology and Mineralogy Research Funds at \$720 Term CHT25

Ronald D Lindmark from Research Assistant School of Forestry Research Funds at \$1,440 Term CHT50 July 1 to December 31, 1962 to Teaching Assistant School of Forestry at \$720 Term CHT50 January 1 to March 31, 1963

Jay L Benson Research Assistant School of Physics Research Funds at \$2,376 Term BHT55 to serve in addition as Teaching Assistant School of Physics at the rate of \$860 Term BHT20 December 16, 1962 to June 15, 1963

Richard A Damerow Research Assistant School of Physics Research Funds at \$2,376 Term BHT55 to continue to serve as Teaching Assistant School of Physics at \$288 for 20% additional time for the winter quarter of 1962-63

Fred D Ferate II Research Assistant School of Physics Research Funds at \$2,376 Term BHT55 to serve in addition as Teaching Assistant School of Physics at the rate of \$540 Term BHT13 December 16, 1962 to June 15, 1963

Jan A Northby Research Assistant School of Physics Research Funds at \$2,376 Term BHT55 to serve as Teaching Assistant School of Physics for 25% of time without change in salary rate or term December 16, 1962 to June 15, 1963

Gargi Luthra Research Assistant Bureau of Educational Research at \$2,160 Term BH50 to serve in addition as Teaching Assistant NDEA Asian Studies at \$720 Term CHX25 December 16, 1962 to June 15, 1963

David A Dobbins Teaching Assistant Geology and Mineralogy at \$2,160 Term BH50 to serve as Research Assistant Geology and Mineralogy Research Funds for 25% of time without change in salary rate or term December 16, 1962 to June 15, 1963

Larry W Finger Teaching Assistant Geology and Mineralogy at \$1,160 Term BH50 to serve in addition as Research Assistant Geology and Mineralogy Research Funds at \$360 for 25% time December 16, 1962 to March 15, 1963

Robert H Yue Teaching Assistant School of Chemistry at \$2,160 Term BH50 to serve as Research Assistant School of Chemistry Research Funds for 25% of time without change in salary rate Term BHT50 December 16, 1962 to June 15, 1963

Judson A Harmon Teaching Assistant General Education at \$1,080 Term BH25 to serve in addition as Research Assistant General Education Research Funds at \$1,080 for 50% time February 1 to June 15, 1963

John H Brown from Medical Fellow Specialist Medicine Research Funds at \$4,000 Term AT to Research Assistant at \$2,000 Term CHT69 July 1 to December 31, 1962 and at \$2,075 Term CHT72 January 1 to June 30, 1963

James J Papike Non-service Fellow Woodrow Wilson National Fellowship at \$2,500 Term B to continue to serve as Research Assistant Geology and Mineralogy Research Funds at \$300 Term CHT25 January 1 to March 15, 1963

Phyllis C Reynolds from Senior Clerk-Typist Psychiatry and Neurology and Sociology Research Funds at \$1,896 Term AHT50 (\$3,792 A rate) to Research Assistant at the rate of \$2,016 Term AHT35 January 1 to June 30, 1963

Joseph J Ferretti from Laboratory Technologist Pediatrics Research Funds at \$1,870 Term CHT50 (\$4,800 A rate) September 20, 1962 to June 30, 1963 to Research Assistant at \$1,200 Term CHT42 January 1 to June 30, 1963

Fred L Shapiro from Medical Fellow Medicine Minneapolis General Hospital Fellowships at \$3,000 plus tuition and fees Term AT to Medical Fellow Medicine without change in salary rate Term A January 1 to June 30, 1963

Richard P Henke from Medical Fellow Medicine at \$3,000 plus tuition and fees Term A to Medical Fellow Pathology Research Funds without change in salary rate Term AT January 1 to June 30, 1963

Arline B Peterson from Administrative Secretary Office of the Vice President Academic Administration at \$5,400 Term A to Secretary to the Vice President Academic Administration without change in salary rate or term for 1962-63

James C Anderson from Senior Account Clerk Business Office at \$4,272 Term A to Property Inventory Clerk at the rate of \$4,620 Term A January 14 to June 30, 1963

Fern E Daggy from Senior Clerk Business Office at \$3,648 Term A to Senior Account Clerk at the rate of \$4,104 Term A January 14 to June 30, 1963

Helen J Pederson from Clerk Business Office at \$2,664 Term A to Senior Clerk at the rate of \$3,240 Term A January 15 to June 30, 1963

Dale F Reedstrom from Accountant Business Office at \$5,616 Term A to Senior Accountant at the rate of \$5,844 Term A January 14 to June 30, 1963

Sandra J Daggy from Senior Clerk-Typist Office of Civil Service Personnel at \$3,504 Term A to Principal Clerk Trainee at the rate of \$3,792 Term A January 16 to June 30, 1963

Jean S Corey from Secretary Department of Alumni Relations at \$3,948 Term A to Principal Secretary at the rate of \$4,104 Term A February 1 to June 30, 1963

Margaret Nicholson from Principal Clerk Administration School of Business Administration at \$4,104 Term A to Senior Clerk Administration College of Science Literature and the Arts at the rate of \$3,504 Term A December 17, 1962 to June 30, 1963

Marilee Ward from Office Supervisor Microbiology at \$4,992 Term A to Executive Secretary without change in salary rate or term August 16, 1962 to June 30, 1963

Sandra T Moe from Secretary Physiology at \$876 Term CT (\$3,504 A rate) October 1 to December 31, 1962 to Senior Secretary at \$2,212 Term CT (\$3,792 A rate) December 1, 1962 to June 30, 1963

Lawrence F Oberste from Herdsman Veterinary Medicine and Clinics Research Funds at \$2,700 Term CT (\$5,400 A rate) July 1 to December 31, 1962 to Herdsman Veterinary Medicine and Clinics at \$2,700 Term CT (\$5,400 A rate) January 1 to June 30, 1963

Catherine J Crowe from Administrative Secretary Administration School of Business Administration at \$5,844 Term A for 1961-62 and \$6,072 Term AL for 1963-64 to Senior Executive Secretary at the rate of \$6,072 Term A February 1 to June 30, 1962 and \$6,312 Term AL for 1962-63

Ann F Armstrong from Speech Pathologist University of Minnesota Hospitals at \$6,564 Term A to Speech Pathologist Supervisor at the rate of \$6,828 Term A January 1 to June 30, 1963

Arvilla W Holstein from Hospital Aide University of Minnesota Hospitals at \$3,372 Term A to Hospital Supply Processing Supervisor at the rate of \$4,104 Term A January 1 to June 30, 1963

Jeffrey B Howe from Hospital Orderly University of Minnesota Hospitals at \$3,372 Term A to Heart Lung Oxygenator Operator Trainee at \$1,912 Term CT (\$4,440 A rate) January 28 to April 30, 1963

Ardis B Johnson from Stores Clerk University of Minnesota Hospitals at \$3,372 Term AL to Elevator Operator at the rate of \$3,504 Term AL January 1 to June 30, 1963

Phyllis E Johnson Clerk University of Minnesota Hospitals at \$3,120 Term A to serve as Principal Clerk at the rate of \$4,104 Term AT November 12, 1962 to January 4, 1963

Helen W Norbeck from Senior Clerk-Typist University of Minnesota Hospitals at \$3,504 Term A to Senior Secretary at the rate of \$3,792 Term AT January 7 to June 30, 1963

Dorothy C Reed from Stores Clerk University of Minnesota Hospitals at \$3,000 Term A to Sewing Machine Operator at \$3,120 Term A for 1962-63

Elizabeth N Reed General Staff Nurse University of Minnesota Hospitals at \$4,992 Term A to continue to serve as Senior Clinic Nurse at the rate of \$5,196 Term AT January 1 to February 28, 1963

Michael C Myers General Mechanic Plant Services Duluth at \$4,440 Term A to serve as Operating Engineer at the rate of \$4,992 Term AT January 1 to March 31, 1963

Laura M Anderson Food Service Worker Sanford Hall at \$3,240 Term A to Assistant Cook at the rate of \$3,372 Term A January 1 to June 30, 1963

Beverly C Ferguson from Food Service Worker Coffman Union Food Service at \$3,000 Term A to Salad Maker at the rate of \$3,120 Term A November 27, 1962 to June 30, 1963

Marcella A Fitch Food Service Worker Comstock Hall at \$2,664 Term A to serve as Custodial Worker without change in salary rate Term AX December 17-22, 1962

Naomi S Henrie Food Service Worker Comstock Hall at \$2,880 Term A to serve as Custodial Worker without change in salary rate Term AX December 17-22, 1962

Louise R Leggette Food Service Worker Comstock Hall at \$2,772 Term A to serve as Custodial Worker without change in salary rate Term AX December 17-22, 1962

Leona L Peterson Food Service Worker Comstock Hall at \$2,664 Term A to serve as Custodial Worker without change in salary rate Term AX December 17-22, 1962

Annie Storrs Senior Food Service Worker Comstock Hall at \$2,880 Term A to serve as Custodial Worker without change in salary rate Term AX December 17-22, 1962

Olga B Bragee from Food Service Worker Cafeteria Duluth at \$3,240 Term A to Salad Maker at the rate of \$3,372 Term A January 1 to June 30, 1963

Mary H Riley from Senior Bookstore Manager Professional Colleges Bookstore at \$7,104 Term AL to Principal Bookstore Manager at the rate of \$7,392 Term A November 16, 1962 to June 30, 1963

Gordon M Gensch from Storehouse Stock Clerk Audio-Visual Education Service at \$4,104 Term A to Storehouse Stock Clerk Nicholson Hall Bookstore without change in salary rate or term December 26, 1962 to June 30, 1963

Luella Olson from Senior Clerk Nicholson Hall Bookstore at \$3,372 Term A to Storehouse Stock Clerk at the rate of \$3,792 Term A January 1 to June 30, 1963

Karla Hodgson from Principal Clerk University Press at \$4,272 Term A to Production Assistant at the rate of \$4,440 Term A January 18 to June 30, 1963

Beverly M Anderson Printing Assistant Department of Mimeograph and Bulletins at \$4,272 Term A to serve as Office Supervisor at the rate of \$4,800 Term AT December 17, 1962 to January 31, 1963

Elaine K Hokanson from Clerk Department of Mimeograph and Bulletins at \$2,772 Term A to Printing Assistant at the rate of \$3,504 Term A February 1 to June 30, 1963

Jacob P Beck from Wringerman University Laundry at \$3,504 Term A to Washman at the rate of \$3,648 Term A January 16 to June 30, 1963

Shirley Ann Bulov from Senior Clerk-Typist Psychiatry and Neurology Research Funds at \$3,504 Term AT to Principal Clerk University Press at the rate of \$4,104 Term A January 1 to June 30, 1963

Vern H Brundell from Computer Programmer Trainee Data Processing Center at \$6,072 Term A to Computer Programmer at the rate of \$6,312 Term A January 1 to June 30, 1963

Thomas J Spaise from Computer Programmer Trainee Data Processing Center at \$6,072 Term A to Computer Programmer at the rate of \$6,312 Term A January 1 to June 30, 1963

Doris E Nowlin from Junior Scientist Trainee Anatomy Research Funds at \$4,992 Term AT to Junior Scientist at the rate of \$5,400 Term AT November 16, 1962 to June 30, 1963

Kay M Newton from Junior Scientist Trainee Medicine Research Funds at \$4,614 Term CT (\$4,992 A rate) July 31, 1962 to June 30, 1963 to Junior Scientist at \$2,598 Term CT (\$5,196 A rate) January 1 to June 30, 1963

Joan L Lindahl from Senior Clerk-Typist Cancer Detection Center at \$3,504 Term AT to Principal Secretary at the rate of \$4,104 Term AT January 1 to June 30, 1963

June M Smith from Junior Scientist Physiology Research Funds at \$3,409 Term CT (\$5,844 A rate) December 1, 1962 to June 30, 1963 to Administrative Laboratory Technologist at \$3,795 Term CT (\$6,072 A rate) November 16, 1962 to June 30, 1963

Dolores M Kohner from Secretary Psychiatry and Neurology Research Funds at \$3,648 Term AT to Senior Secretary at \$2,620 Term CT (\$3,792 A rate) October 23, 1962 to June 30, 1963

Frances Shiota from Junior Scientist Medicine Research Funds at \$1,350 Term CT (\$5,400 A rate) September 4 to December 31, 1962 to Junior Scientist College of Pharmacy Research Funds at \$2,700 Term CT (\$5,400 A rate) January 1 to June 30, 1963

Neil McCracken from Property Inventory Clerk Business Office at \$4,800 Term A to Principal Account Clerk Peace Corps at the rate of \$5,400 Term AT January 1 to June 30, 1963

Salary Adjustments

Barbara A Burke Assistant Professor Pediatrics from \$11,500 Term A to the rate of \$13,000 Term A December 1, 1962 to June 30, 1963

Jan M Berg Lecturer Philosophy from \$5,000 Term CX (\$7,500 B rate) December 16, 1962 to June 15, 1963 to \$5,500 Term CX (\$8,250 B rate) December 16, 1962 to June 15, 1963

James L Reynolds Instructor Mechanical Engineering at \$3,800 Term BHT75 (\$5,067 B rate) to continue to receive \$422 for 25% additional time for the winter quarter of 1962-63

Gwendolyn K E Wetter Instructor Rhetoric from \$1,050 Term CHT50 (\$6,300 B rate) for the winter quarter of 1962-63 to \$1,750 Term CT (\$5,250 B rate) for the spring quarter of 1962-63

Zigfrids T Stelmachers Instructor Psychiatry and Neurology Research Funds from \$7,200 Term AT to without salary January 1 to June 30, 1963

Rafael F Fernandez Research Fellow Medicine Research Funds from \$5,925 Term CT (\$6,464 A rate) July 1, 1962 to May 31, 1963 to \$2,833 Term CT (\$6,800 A rate) January 15 to May 31, 1963

Shoji Nishimoto Research Fellow School of Public Health Laboratory of Physiological Hygiene Research Funds from \$5,594 Term AHT90 (\$6,216 A rate) to the rate of \$6,216 Term AT January 1 to June 30, 1963

Geraldine S Daley Fillmore County Home Agent Instructor Agricultural Extension Service from \$5,200 (\$4,475 University \$725 County) Term AH86 to the rate of \$5,400 (\$4,575 University \$825 County) Term AH85 January 1 to June 30, 1963

Milton L Hoberg Agricultural Agent Instructor Agricultural Extension Service from \$8,100 (\$5,250 University \$2,850 County) Term AH65 to the rate of \$8,400 (\$5,400 University \$3,000 County) Term AH64 January 1 to June 30, 1963

Barbara Mains Oseth East Polk County Home Agent Instructor Agricultural Extension Service from \$5,400 (\$4,650 University \$750 County) Term AH86 to the rate of \$5,650 (\$4,750 University \$900 County) Term AH84 January 1 to June 30, 1963

Harold W Linder Teaching Assistant Geology and Mineralogy from \$2,160 Term BH50 to the rate of \$1,080 Term BH25 December 16, 1962 to June 15, 1963

Carol Ann Lundberg Teaching Assistant Mathematics College of Science Literature and the Arts at \$1,620 Term BHX38 to receive \$360 for 13% additional time December 16, 1962 to June 15, 1963

Albert Milgrom Teaching Assistant Interdisciplinary Programs at \$1,440 Term BH33 to receive \$240 for 17% additional time December 16, 1962 to March 15, 1963

Terry G Newell Teaching Assistant Psychology at \$1,641 Term BHX38 to receive \$173 for 12% additional time December 16, 1962 to March 15, 1963

Richard L Patten Teaching Assistant Psychology at \$1,641 Term BH38 to receive \$173 for 12% additional time December 16, 1962 to March 15, 1963

Eugene R Soimdahl Teaching Assistant Psychology at \$1,080 Term BHX25 to receive \$374 for 13% additional time December 16, 1962 to June 15, 1963

Mohammad W Siddiquee Teaching Assistant Electrical Engineering at \$2,160 Term BHT50 to receive \$720 for 25% additional time December 16, 1962 to June 15, 1963

William A Dolid Teaching Assistant Mathematics Institute of Technology at \$2,160 Term BH50 to continue to receive \$360 for 25% additional time December 16, 1962 to March 15, 1963

Larry L Kirkwold Research Assistant School of Forestry Research Funds from \$360 Term CHT25 October 1 to December 31, 1962 to \$1,440 Term CHT50 January 1 to June 30, 1963

Trilochan S Hora Research Assistant Soil Science Research Funds from \$840 Term CHT50 December 1, 1962 to March 15, 1963 to \$480 Term CHT25 January 16 to May 15, 1963

John D Steffen Administrative Fellow Office of the Dean of Students Bureau of Student Loans and Scholarships at \$2,880 Term AH50 to receive \$460 for 25% additional time January 1 to March 31, 1963

Thomas H Leavy Medical Fellow Medicine from \$3,000 plus tuition and fees Term A to salary paid directly by the Veterans Administration Hospital January 1 to June 30, 1963

Larry A Kaempf Computer Programmer Trainee Data Processing Center from \$5,844 Term A to the rate of \$6,072 Term A January 1 to June 30, 1963

Rosemary Battaglia Medical Records Typist University of Minnesota Hospitals from \$3,648 Term A to the rate of \$3,792 Term A January 9 to June 30, 1963

Gwendolyn F Riggin Medical Records Typist University of Minnesota Hospitals from \$3,648 Term A to the rate of \$3,792 Term A January 9 to June 30, 1963

Ruth S Thompson Medical Records Typist University of Minnesota Hospitals from \$3,948 Term A to the rate of \$4,104 Term A January 9 to June 30, 1963

Marvyn O Bergman Laboratory Technologist Institute of Child Development and Psychology Research Funds from \$1,350 Term AHT25 (\$5,400 A rate) to the rate of \$2,700 Term AHT50 (\$5,400 A rate) February 1 to June 30, 1963

Donna B Harrison Senior Secretary Trainee Student Unions Coffman Memorial Union from \$3,504 Term A to the rate of \$3,648 Term A January 1 to June 30, 1963

Audrey C Hopkins Senior Laboratory Technician School of Physics Research Funds from \$2,961 Term AHT75 (\$3,948 A rate) to the rate of \$3,455 Term AHT88 (\$3,948 A rate) January 21 to June 30, 1963

Russell T Lund, Jr Linear Accelerator Operator School of Physics Research Funds from \$4,050 Term AHT75 (\$5,400 A rate) to the rate of \$5,400 Term AT December 16, 1962 to June 30, 1963

Robert J Glaser Assistant Scientist Medicine Research Funds at \$962 Term CHT20 (\$6,072 A rate) September 16, 1962 to May 31, 1963 to serve at the rate of \$6,072 Term AT December 17-31, 1962

Carlene D Tompkins Senior Laboratory Technician Pathology Research Funds from \$869 Term CHT50 (\$3,792 A rate) July 16 to December 31, 1962 to the rate of \$3,792 Term AT January 1 to June 30, 1963

Helen L Fulton Audiologist Pediatrics Research Funds at \$2,630 Term CHT50 (\$6,312 A rate) September 1, 1962 to June 30, 1963 to receive \$98 for 50% additional time December 13-24, 1962

Sandra K Hansen Senior Clerk-Typist Pediatrics Research Funds from \$2,465 Term CT (\$3,372 A rate) October 8, 1962 to June 30, 1963 to \$2,562 Term CT (\$3,504 A rate) October 8, 1962 to June 30, 1963

Virginia P Belcher Senior Statistical Clerk School of Public Health Research Funds from \$1,459 Term CHT80 (\$3,648 A rate) July 1 to December 31, 1962 to \$387 Term CT (\$3,648 A rate) December 1-29, 1962 (terminated)

Jean H Elstron Laboratory Technologist Physiological Chemistry Research Funds from \$1,456 Term CHT50 (\$4,992 A rate) October 1, 1962 to April 30, 1963 to \$1,664 Term CT (\$4,992 A rate) January 1 to April 30, 1963

Leaves of Absence

Harold W Chase Professor Political Science leave without salary December 16, 1962 to June 15, 1963 to do research at the Brookings Institution, Washington, D C (additional leave has been approved for 1963-64)

Clarence E Lund Professor Mechanical Engineering leave with salary April 28 to May 8, 1963 to present a paper at the International Building Industry Congress at Hanover Germany

Will M Myers Professor and Head Agronomy and Plant Genetics leave with salary February 1-25, 1963 to be a member of the United States delegation to the United Nations Conference on the Application of Science and Technology for the Benefit of the Less Developed Areas to be held in Geneva Switzerland

Frederick G Holdaway Professor Entomology Fisheries and Wildlife leave with salary December 5, 1962 to January 31, 1963 on account of illness

Edward J Baldes Professor of Biophysics Mayo Foundation leave without salary January 1 to March 31, 1963 for personal reasons

William H Hollinshead Professor of Anatomy Mayo Foundation leave without salary January 1 to March 31, 1963 to serve as Visiting Professor of Anatomy at the University of Washington

Ledru O Guthrie Associate Professor English sabbatical furlough for the spring quarter of 1962-63 to assemble data bearing on changes in English requirements in the Institute of Technology in southeastern states from Virginia to Georgia

Karl F Morrison Assistant Professor History leave without salary for 1963-64 for research abroad under an ACLS Fellowship

Marion A Brooks Assistant Professor Entomology Fisheries and Wildlife leave with salary April 1-30, 1963 to attend a Symposium on Symbiosis sponsored by the Society for General Microbiology in London England

Jean F Ellison Instructor School of Nursing 50% time leave without salary January 16 to February 9, 1963 on account of illness

Orville M Gunderson Area Soils Agent Instructor Agricultural Extension Service leave without salary February 2 to March 15, 1963 for work toward master's degree

Frederick C Gillett Research Assistant School of Physics Research Funds leave without salary January 1 to February 15, 1963 for work on cooperative project with Princeton University

Wayne A Stein Research Assistant School of Physics Research Funds leave without salary January 1 to February 15, 1963 for work on cooperative project with Princeton University

Amy Bell MacKinnon Principal Clerk Office of Admissions and Records leave with salary January 14-25, 1963 for annual military training

Rita A Drone Librarian Law School leave without salary January 21 to March 31, 1963 on account of pregnancy

Gladys P West Clerk-Typist Administration Morris continuation of leave without salary January 1-15, 1963 on account of illness

Laura B Kooistra Clerk-Typist Division of Humanities Duluth leave without salary January 1 to June 30, 1963 on account of illness

LaBelle G Brice Custodial Worker University of Minnesota Hospitals leave without salary January 7-31, 1963 on account of illness

Alice K Campbell Senior Clinic Nurse University of Minnesota Hospitals continuation of leave with salary January 1 to February 28, 1963 on account of illness

Joan M Chance Hospital Aide University of Minnesota Hospitals leave without salary January 19 to March 3, 1963 on account of pregnancy

Frances Conger Food Service Worker University of Minnesota Hospitals leave with salary February 1-15, 1963 and leave without salary February 16-28, 1963 on account of illness

Agatha Eklund Head Hospital Nurse University of Minnesota Hospitals leave without salary December 20, 1962 to January 8, 1963 on account of illness

Helen E Huber Student Technologist Supervisor University of Minnesota Hospitals continuation of leave without salary January 1-31, 1963 on account of illness

Lois D Seedon Senior Clerk University of Minnesota Hospitals 50% time leave without salary January 14-31, 1963 on account of illness

Margaret Vanderkraan Hospital Nursing Supervisor and Instructor University of Minnesota Hospitals leave without salary February 13-24, 1963 for extended vacation

Julia M Beamish Clerk-Typist Audio-Visual Extension Service leave without salary November 5-9, 1962 on account of illness

Joloyce L Falgren Senior Clerk-Typist Office of the Dean of Students State-Wide High School Testing Program 50% time leave without salary January 1-31, 1963 on account of illness

Marion F Cure Senior Laboratory Technician Rural Sociology Research Funds leave without salary December 17, 1962 to January 31, 1963 on account of illness

Salvator Ritchie Senior Clerk St Paul Campus General Service and Maintenance leave without salary December 11, 1962 to January 11, 1963 on account of injury at work

Joseph E Lowney Operating Engineer Plant Services Duluth leave with salary December 11, 1962 to January 4, 1963 on account of injury at work

Hazel Finley Food Service Worker Sanford Hall continuation of 50% time leave without salary January 1 to June 30, 1963 on account of illness

Clara Koehler Custodial Worker Comstock Hall continuation of leave without salary December 25, 1962 to March 25, 1963 on account of illness in family

Edna M Abrahamson Food Service Worker Cafeteria Duluth leave without salary December 17-31, 1962 on account of Cafeteria closing

Olga B Bragee Food Service Worker Cafeteria Duluth leave without salary December 17-31, 1962 on account of Cafeteria closing

Ethel L Foy Cook Cafeteria Duluth leave without salary December 17-31, 1962 on account of Cafeteria closing

Lillie J Hansen Cook Cafeteria Duluth leave without salary December 17-31, 1962 on account of Cafeteria closing

Glenora A Jahr Food Service Worker Cafeteria Duluth leave without salary December 17-31, 1962 on account of Cafeteria closing

Grace W Loftness Laundry Worker University Laundry leave without salary January 16-31, 1963 on account of illness

Lillian A Mellgren Laundry Worker University Laundry leave without salary December 19, 1962 to January 4, 1963 on account of illness

W Richard Freeman Storehouse Stock Clerk Audio-Visual Education Service on military leave without salary leave to terminate December 24, 1962 (returned from service)

Ralph W Fuchs Junior Engineer School of Physics Research Funds 25% time leave without salary January 16 to April 15, 1963 to attend classes

Judith A Brodie Principal Clerk School of Public Health Research Funds leave without salary December 13-31, 1962 on account of illness

Betty L Howard Dental Clinic Attendant School of Dentistry Research Funds leave without salary December 21-29, 1962 for vacation

Constance L Wilhelm Dental Clinic Attendant School of Dentistry Research Funds leave without salary December 20-27, 1962 for vacation

CONTRACTS AND GRANTS

Voted to approve the following contracts and grants:

U. S. Department of Agriculture

Line project AH e6-17 (Rev.), Cooperative Agreement between the University of Minnesota School of Medicine and United States Department of Agriculture, Agricultural Research Service on research to determine the influence of organs high in lymphoid tissue such as the thymus, spleen, and bursa of Fabricius on the susceptibility of chickens to lymphomatosis, effective November 1, 1962, for an indefinite period, Dr. Raymond O. A. Peterson, Pediatrics, filed supplement to the minutes, page 15,228

12-11-009-16736, Supplement No. 7, Lake States Forest Experiment Station, Mode of Infection and Spore Dissemination, for the period January 1 through June 30, 1963, allotting funds of \$1,850.00, Dr. Milton F. Kernkamp, Plant Pathology, filed supplement to the minutes, page 15,229

U. S. Atomic Energy Commission

AT(11-1)-1248, study entitled "The Electrical Charging of Small Particles at Low Pressures" for the period January 16, 1963, through January 15, 1964, allotting funds of \$39,924.00, Dr. K. T. Whitby, Mechanical Engineering, filed supplement to the minutes, page 15,230

U. S. Air Force

AF 41(657)-139, Modification No. 9, incorporating the final overhead rate through July 15, 1961, Dr. E. B. Brown, Jr., Physiology, filed supplement to the minutes, page 15,231

AF 41(657)-213, Modification No. 7, incorporating the final overhead rate through October 31, 1961, Dr. E. B. Brown, Jr., Physiology, filed supplement to the minutes, page 15,232

AF 19(604)-8072, Modification No. 3, extending the contract period nine months to January 31, 1964, allotting funds of \$30,000.00, the contract total becoming \$96,575.00, adding to listing of capital items a high voltage power supply at estimated cost of \$1,205.00, Dr. H. J. Oskam, Electrical Engineering, filed supplement to the minutes, page 15,233

AF-AFOSR-204-63, Alterations of Brain Biochemistry and Development of Behavior, for the period December 1, 1962, through April 30, 1964, allotting funds of \$40,000.00, Dr. F. E. Shideman, Pharmacology, filed supplement to the minutes, page 15,234

U. S. Army

DA-49-007-MD-592, Modification No. 9, extending the contract period one year to December 31, 1963, allotting funds of \$9,125.00, the contract total becoming \$90,595.00, modifying the conditions relating to the purchase of equipment exceeding unit cost of \$500.00, Dr. F. W. Hoffbauer, Medicine, filed supplement to the minutes, page 15,235

DA-49-193-MD-2204, termination of contract and refund of \$430.34, Professor Fred Smith, Agricultural Biochemistry, filed supplement to the minutes, page 15,236

U. S. Navy

Nonr-710(00), Amendment No. 24 to the basic agreement, substituting a new set of general provisions for those which have been in effect, filed supplement to the minutes, page 15,237

Nonr-710(36), Amendment No. 3, extending the contract period three years to February 28, 1966, allotting funds of \$33,768.00, the contract total becoming \$65,028.00, Dr. S. Gaylen Bradley, Bacteriology and Immunology, filed supplement to the minutes, page 15,238

U. S. Department of Health, Education, and Welfare

SA-FD 2963, P.O.-FDA 1666-63 (F), investigating, evaluating, and reporting on the adverse effects of drugs, for the period July 1, 1962, through June 30, 1963, Dr. Maynard Jacobson, Medicine, filed supplement to the minutes, page 15,239

U. S. National Aeronautics and Space Administration

NAS-3-2554, Study of Reignitable Solid Propellant Grains Leading to the Extinguishable and Restartable Solid Propellant Rocket Motors, allotting funds of \$38,000.00, for the period January 22, 1963, through January 22, 1965, Prof. Edward Fletcher, Mechanical Engineering, filed supplement to the minutes, page 15,240

National Science Foundation

GB-594, renewal of research on Photosynthesis and Related Metabolic Processes, allotting funds in the amount of \$100,000.00, Dr. A. H. Brown, Botany

GP-799, Complex Flows of Viscoelastic Fluids, allotting funds of \$26,700.00, Dr. Arnold G. Fredrickson, Chemical Engineering, filed supplement to the minutes, page 15,241

GP-729, renewal of research on Decision Theory, allotting funds in the amount of \$80,000.00, Dr. Milton Sobel, Statistics

U. S. Office of Vocational Rehabilitation

18-63, Training in the Field of Rehabilitation, Amendment No. 1, allotting funds in the amount of \$6,257.00, Dr. Lloyd Lofquist, Psychology, filed supplement to the minutes, page 15,242

U. S. Peace Corps

PC-(W)-139, Amendment No. 1, allotting funds of \$9,108.00, making a total of \$107,036.00, for Medical Technology training, Dr. Luther Pickrel, Agricultural Extension, filed supplement to the minutes, page 15,243

PC-(W)-162, Training of Peace Corps Volunteers for Projects in Mysore and Punjab, India, allotting funds in the amount of \$205,821.00, effective date January 17, 1963, for a period of 12 weeks, Dr. Luther Pickrel, Agricultural Extension, filed supplement to the minutes, page 15,244

U. S. Public Health Service

AI02471-05, renewal of research on Antibodies in Brucellosis, allotting funds of \$22,425.00, Dr. Wendell Hall, Veterans Hospital

AI02618-05, renewal of research on Immuno-Histochemical Reaction, allotting funds of \$24,702.00, Dr. Robert Vernier, Pediatrics

AI02873-04 S1, supplementing funds for research on Physiology of Mycobacterium Tuberculosis, allotting funds in the amount of \$505.00, Dr. Wendell Hall, Veterans Hospital

AI04415-02, renewal of research on Endotoxin Shock, allotting funds in the amount of \$22,193.00, Dr. Wesley Spink, Medicine

AI04479-02, renewal of research on Protein Synthesis Following Bacteriophage Infection, allotting funds in the amount of \$12,446.00, Dr. James F. Koerner, Physiological Chemistry

AI05153-01, research on Electron Microscope Studies—Immune Response, allotting funds of \$68,450.00, Dr. Robert L. Vernier, Pediatrics, filed supplement to the minutes, page 15,245

AI05303-01, research on Tritiated Endotoxin, allotting funds in the amount of \$14,351.00, Dr. Wayne Schrader, Pathology, filed supplement to the minutes, page 15,246

AM06464-01, Newborn Steroid Research, allotting funds in the amount of \$17,589.00, Dr. R. A. Ulstrom, Pediatrics, filed supplement to the minutes, page 15,247

AM06687-01, research on Thymectomy and Immune Functions, allotting funds in the amount of \$33,698.00, Dr. William Kelly, Surgery, filed supplement to the minutes, page 15,248

B-3364, supplementing funds for Neurological Research Center—Cerebrovascular Disease, allotting funds in the amount of \$10,975.00, Dr. Maynard Cohen, Neurology

DE01850-01, research on Fluoride Metabolism, allotting funds in the amount of \$156,875.00, Dr. W. D. Armstrong, Physiological Chemistry, filed supplement to the minutes, page 15,249

DE-K3-5,269-01, research on the Mechanical Properties of Small Blood Vessels, allotting funds in the amount of \$13,418.00, Dr. Maurice Meyer, Dentistry, filed supplement to the minutes, page 15,250

DPD-17,351-CI, renewal of research on Meckel's Cartilage, allotting funds in the amount of \$500.00, Dr. William Felts for Dr. Robert Mundt, Anatomy

GM-24-05, renewal of Research Training of Medical Students, allotting funds in the amount of \$17,500.00, Dr. H. Mead Cavert, Medical Sciences

GM07709-03, renewal of Studies on Congenital Defects in Folic Acid Deficiency, allotting funds in the amount of \$8,280.00, Dr. Lura Morse, Home Economics

GM07917-03, renewal of research on Inclusion Association and Rotatory Dispersion, allotting funds in the amount of \$8,923.00, Dr. Hermann Schlenk, Hormel Institute

GM10900-02, renewal of research on Energetics of Protein Structure, allotting funds in the amount of \$18,975.00, Dr. Donald Wetlaufer, Physiological Chemistry

GM-17-591-02, Predoctoral Fellowship—Haskins, Dr. Norman S. Kerr, Zoology, filed supplement to the minutes, page 15,251

GPD-16,130, research on Lanosterol and Cholesterol, allotting funds in the amount of \$500.00, Dr. Ivan Frantz for Dr. Terence Scallen, Medicine, filed supplement to the minutes, page 15,252

GPD-16,514, research on the Individual Gastric Cell Types, allotting funds in the amount of \$500.00, Dr. Owen Wangenstein, Surgery, filed supplement to the minutes, page 15,253

GPM-16,532, Predoctoral Fellowship—Morean, Dr. Franklin G. Wallace, Zoology, filed supplement to the minutes, page 15,254

GSP-17,895, research on Electrophysiology, allotting funds in the amount of \$500.00, Dr. Otto Schmitt for Mr. Stuart Jacobson, Physics, filed supplement to the minutes, page 15,255

HE-01730-10, renewal of research on Development of Swine for Use in Research, allotting funds in the amount of \$26,012.00, Dr. W. E. Rempel, Dr. R. E. Comstock, Animal Husbandry

HE-04997-03, revising award on Function and Metabolism in Aging Man, adjusting amount awarded to \$49,850.00 instead of \$50,000.00, Dr. Ancel Keys, Physiological Hygiene

HE-06927-02, renewal of research on Hemodynamics Study by Radiographic Technique, allotting funds of \$8,952.00, Dr. Sadek Hilal, Radiology

HE-07858-01, research on Experimental Pulmonary Hypertension, allotting funds of \$7,849.00, Dr. John F. Perry, Jr., Surgery, filed supplement to the minutes, page 15,256

HPD-15,449, research on Cardiovascular Changes—Heartworm in Dogs, allotting funds in the amount of \$500.00, Dr. John P. Arnold for Dr. Kent Vasko, Veterinary Medicine, filed supplement to the minutes, page 15,257

MH00388-13, renewal of research on Central Nervous System, allotting funds of \$19,356.00, Dr. J. Francis Hartmann, Anatomy

MH02662-06, renewal of research on Biogenesis of Morphine, allotting funds of \$17,454.00, Dr. Edward Leete, Chemistry

MH03536-04, renewal of research on Infantile Trauma, allotting funds in the amount of \$25,979.00, Dr. Gardner Lindzey, Psychology

MH07541-01, research on Antagonism of Narcotic Effects and N-demethylation, allotting funds in the amount of \$6,152.00, Dr. Gilbert J. Mannering, Pharmacology, filed supplement to the minutes, page 15,258

MPD-17,753-R1, research on Learning and Motivation in Children, allotting funds in the amount of \$500.00, Dr. Harold Stevenson for Dr. Kenneth Hoving, Child Welfare, filed supplement to the minutes, page 15,259

MPM-16,208, research on Reinforcement and Non-Contingent Learning, allotting funds in the amount of \$500.00, Dr. Harold Stevenson for Mr. Lauren Harris, Child Development, filed supplement to the minutes, page 15,260

NB-04403-01, research on Determination of Susceptibility to Hearing Loss, allotting funds of \$22,780.00, Dr. Dixon Ward, Otolaryngology, filed supplement to the minutes, page 15,261

PH 86-63, research on Bacterial Background of Surgical Suites—Phase Two, allotting funds of \$32,498.40, Dr. Richard G. Bond, Public Health, filed supplement to the minutes, page 15,262

PH 43-63-544, Studies with regard to etiology of mental health, allotting funds in the amount of \$1,995.00, Dr. Jacob E. Bearman, Public Health, filed supplement to the minutes, page 15,263

State of Minnesota

5-3576, research on Laboratory Study of Bituminous Stabilization of Silty Soils, allotting funds in the amount of \$10,500.00 for the period January 2, 1963, to December 31, 1963, Dr. Miles S. Kersten, Civil Engineering, filed supplement to the minutes, page 15,264

Nongovernmental Research

Bollingen Foundation—Archeology of Nestor's Kingdom, allotting funds in the amount of \$15,000.00, Prof. William McDonald, Classics, filed supplement to the minutes, page 15,265

Louis W. and Maud Hill Family Foundation, Publication of "Systematic Theorizing in the Fields of Casework and Psychotherapy," allotting funds of \$5,757.00, Dr. Ralph F. Berdie, Student Counseling Bureau, filed supplement to the minutes, page 15,266

Jet Propulsion Laboratory, California Institute of Technology, Modification No. 1, extending the completion date on Contract No. 950241 to June 15, 1962, and providing for final report delivery by June 30, 1963, Dr. A. O. C. Nier, Physics, filed supplement to the minutes, page 15,267

Eli Lilly and Company, *Airsacculitis of Turkeys*, allotting funds in the amount of \$1,200.00, Dr. B. S. Pomeroy, Veterinary Bacteriology, filed supplement to the minutes, page 15,268

Miller Hospital, allotting funds in the amount of \$2,015.00, Dr. J. L. McKelvey, Obstetrics and Gynecology, filed supplement to the minutes, page 15,269

Minneapolis-Honeywell Regulator Co., P.O. No. 114239, allotting funds in the amount of \$800.00, Mr. Sheldon Vick, Aeronautics and Engineering Mechanics, filed supplement to the minutes, page 15,270

Mount Sinai Hospital—Fellowship—Department of Medicine—renewal of agreement for period of July 1, 1962, through June 30, 1963, Dr. C. J. Watson, Medicine, filed supplement to the minutes, page 15,271

Red River Valley Beet Growers Association, research on Control of Weeds in Sugar Beets, allotting funds in the amount of \$1,900.00. This is a renewal of agreement the time period being April 1, 1962, to March 31, 1963, Prof. H. J. Sloan, Agricultural Experiment Station, filed supplement to the minutes, page 15,272

State of California—Olive Advisory Board, allotting funds in the amount of \$5,000.00, Dr. Ancel Keys, Physiological Hygiene, filed supplement to the minutes, page 15,273

Warner-Lambert Pharmaceutical Co., Gastric Ulcer Genesis in Fasting Rats, allotting funds in the amount of \$4,477.50, Dr. Owen Wangenstein, Surgery, filed supplement to the minutes, page 15,274

GIFTS

Voted to accept with thanks the following gifts:

Research

Donor	Elsa U. Pardee Foundation
Amount	\$12,000.00
Fund	Elsa U. Pardee Fund

Donor	E. I. du Pont de Nemours & Company, Inc.
Amount	\$10,000.00
Fund	E. I. du Pont de Nemours & Company—Fundamental Research —Chemistry
Donor	E. I. du Pont de Nemours & Company, Inc.
Amount	\$5,000.00
Fund	E. I. du Pont de Nemours & Company—Fundamental Research —Mechanical Engineering
Purpose	To establish a fund in accordance with the statement filed sup- plement to the minutes, page 15,275
Donor	Estate of Louise Knoblauch
Amount	\$3,000.00
Fund	Knoblauch Fund for Medical Research
Purpose	To establish a fund in accordance with the statement filed sup- plement to the minutes, page 15,276
Donor	Dr. Ancel Keys
Amount	\$1,000.00
Fund	Lincoln National Life Insurance Project
Donors	Various
Amount	\$1,017.13
Fund	Heart Disease Research Fund
Donor	J. B. Roerig and Co.
Amount	\$900.00
Fund	Psychotherapeutic Drug Fund
Donors	Various
Amount	\$589.15
Fund	Fund for Research in Cancer
Donor	Mr. W. C. Figge
Amount	\$250.00
Fund	Radiation Therapy Cancer Research Fund
Donors	Various
Amount	\$225.15
Fund	Nervous and Mental Disease Fund
Donors	Various
Amount	\$166.00
Fund	Physiology Research and Teaching Fund
Donor	Mrs. H. H. Irvine
Amount	\$100.00
Fund	Frank E. Burch Research Fund for Ophthalmology
Donor	Revere Combined Charities
Amount	\$25.00
Fund	Special Research Fund
Donors	Various
Amount	\$17.00
Fund	Malignant Disease Research Fund
Donor	Mrs. F. Richter
Amount	\$2.00
Fund	Specific Diseases Research Fund

Scholarships, Fellowships, Prizes and Awards

Donor	Mr. Jay Phillips
Amount	700 Shares of common stock of National Presto Industries Accession valuation \$10,850.00
Fund	Hubert H. Humphrey Fellowship Fund
Donors	Various
Amount	\$10,013.00
Fund	Anna M. Jones Memorial Loan Fund
Purpose	To establish a fund in accordance with the statement filed supplement to the minutes, page 15,277
Donors	Various
Amount	\$8,230.00
Fund	All-University Scholarship Fund
Donor	E. I. du Pont de Nemours & Company, Inc.
Amount	\$5,000.00
Fund	E. I. du Pont de Nemours & Company—Fundamental Research— Chemical Engineering
Donor	Mrs. Maurice L. Rothschild
Amount	\$4,348.29
Fund	Maurice L. Rothschild Scholarship Fund
Donor	Mr. David Paper
Amount	\$3,000.00
Fund	Lewis and Anne F. Paper Fellowship in Advanced Study of Proctology
Donors	Various
Amount	\$1,543.35
Fund	Duluth Campus Scholarship Fund
Donors	Various
Amount	\$1,015.00
Fund	National Society of Colonial Dames of America in the State of Minnesota Scholarship Fund
Donor	Archie D. and Bertha H. Walker Foundation
Amount	\$1,000.00
Fund	Archie D. and Bertha H. Walker Foundation Loan Fund— Psychiatry
Donor	Cortland O. Robinson, M.D.
Amount	\$1,000.00
Fund	Craig Hallum Robinson Memorial Scholarship Fund
Donor	Central Warehouse Company
Amount	\$1,000.00
Fund	Central Warehouse Company Scholarship Fund
Donors	Various
Amount	\$848.97
Fund	Law Firm Scholarship Fund
Donor	WLWL Radio
Amount	\$700.00
Fund	WLWL Broadcasting Scholarship Fund

Donor Amount Fund	David P. Norden, D.D.S. \$600.00 Peter Norden Memorial Scholarship Fund	
Donors Amount Fund	Various \$366.00 North Star Scholarship Fund—Duluth	
Donor Amount Fund	Junior Achievement, Inc. of Greater Minneapolis \$300.00 Junior Achievement of Greater Minneapolis Scholarship Fund	
Donor Amount Fund Purpose	International College of Dentists, U. S. A. Section \$300.00 International College of Dentists Loan Fund To establish a fund in accordance with the statement filed supplement to the minutes, page 15,278	
Donors Amount Fund Purpose	Various \$278.00 Hallie Bruce Memorial Prize Fund To establish a fund in accordance with the statement filed supplement to the minutes, page 15,279	
Donor Amount Fund	Honorable Otto A. Silha \$233.92 University of Minnesota Journalism Alumni Scholarship Fund	\$100.00
	Judge Betty Washburn Memorial Scholarship Fund	50.00
	University Theater Building Fund	83.92
Donor Amount Fund	Mr. Moustasa Mosharrasa \$200.00 University of Minnesota International Exchange Scholarship Fund	
Donors Amount Fund	Various \$177.60 Agriculture Barter for College Loan Fund, University of Minnesota, Morris	
Donors Amount Fund	Various \$172.50 General Scholarship Fund, University of Minnesota, Morris	
Donors Amount Fund Purpose	Various \$150.00 University of Minnesota, Morris General Student Loan Fund To establish a fund in accordance with the statement filed supplement to the minutes, page 15,280	
Donor Amount Fund	Walter Tripp Post No. 29, American Legion, Morris \$100.00 American Legion Scholarship, University of Minnesota, Morris	
Donor Amount Fund	Mrs. Janet B. Watson \$100.00 Sally Bronson Peterson Memorial Scholarship Fund	
Donor Amount Fund Purpose	Dr. Carroll G. Hawkinson, D.D.S. \$100.00 1936 Dental Students Loan Fund To establish a fund in accordance with the statement filed supplement to the minutes, page 15,281	

Donor	Mr. Gerald T. Mullin
Amount	\$100.00
Fund	Jacob G. Cohen Intern Loan Fund
Donor	Mr. Morris Korsh
Amount	\$100.00
Fund	Minnesota Indian Youth Scholarship Fund
Donor	Mrs. Josephine Blooston
Amount	\$100.00
Fund	Benjamin M. Cohen College of Pharmacy Scholarship
Donor	Elizabeth L. Hammel
Amount	\$50.00
Fund	Foreign Student Emergency Aid and Scholarship Fund
Donors	Various
Amount	\$44.40
Fund	Agriculture Barter for College Scholarship Fund, University of Minnesota, Morris
Donor	Mrs. William F. Hagerman
Amount	\$25.00
Fund	William F. Hagerman Award
Donor	Anonymous
Amount	\$20.00
Fund	Law Faculty Scholarship Fund
Donors	Various
Amount	\$15.00
Fund	Adolph Meyer Memorial Loan Fund
Donors	Various
Amount	\$10.00
Fund	Sidney J. Kaplan Legal Scholarship Endowment Fund
Donors	Various
Amount	\$6.00
Fund	Oscar L. Mather Scholarship Fund
Donor	Mrs. Margaret C. Palm
Amount	\$5.00
Fund	Householders Student Loan Fund

Miscellaneous

Donor	Mr. John S. Pillsbury
Amount	\$37,624.12
Fund	Mr. and Mrs. John Sargent Pillsbury Medical Historical Book Fund
Donor	National Science Foundation
Amount	\$23,600.00
Fund	Radiation Genetics Graduate Research Lab—Agronomy
Purpose	To establish a fund in accordance with the statement filed supplement to the minutes, page 15,282

Donor Amount Fund Purpose
 National Science Foundation
 \$20,500.00
 Laboratory for Physiological Psychology Fund
 To establish a fund in accordance with the statement filed supplement to the minutes, page 15,283

Donor Amount Fund Purpose
 Morris Chalfen
 \$5,000.00
 Chalfen International Indigent Children's Fund
 To establish a fund in accordance with the statement filed supplement to the minutes, page 15,284

Donor Amount Fund
 Minnesota State Horticultural Society
 \$5,000.00
 Horticultural Society Arboretum Fund

Donors Amount Fund
 Various
 \$3,264.71
 Variety Club Heart Hospital Equipment Fund

Donors Amount Fund
 Various
 \$2,790.07
 Medical Library Fund

Donor Amount Fund
 Mrs. J. S. Blumenthal
 \$2,353.19
 Dr. J. S. Blumenthal Lecture Fund

Donors Amount Fund
 Various
 \$2,268.10
 Museum of Natural History Building Fund

Donors Amount Fund
 Various
 \$1,090.00
 Oral Surgery Service Fund

Donor Amount Fund
 H. W. Wilson Foundation, Inc.
 \$1,000.00
 Library School Service Fund

Donor Amount Fund
 Lewis and Anne F. Paper Foundation
 \$1,000.00
 Animal Research Facilities—Diehl Hall

Donor Amount Fund Purpose
 Mr. George W. Taylor
 \$1,000.00
 Award for Distinguished Teaching in the Institute of Technology
 To establish a fund in accordance with the statement filed supplement to the minutes, page 15,285

Donors Amount Fund
 Various
 \$817.50
 Medical School General Purpose Fund

Donors Amount Fund
 Various
 \$801.10
 Masonic Memorial Hospital Equipment Fund

Donor Amount Fund Purpose
 Educational Services, Inc.
 \$750.00
 Educational Services, Inc. SEEC Teaching Program
 To establish a fund in accordance with the statement filed supplement to the minutes, page 15,286

Donor	Minnesota Chapter of the National Cystic Fibrosis Research Foundation
Amount	\$500.00
Fund	Cystic Fibrosis Research—Patient Care Fund
Donor	General Radio Co.
Gift	Laboratory Equipment—Value \$240.00 Department of Electrical Engineering
Donors	Various
Amount	\$57.00
Fund	McQuarrie Pediatric Fund
Donor	Fannie Gilbertson
Amount	\$50.00
Fund	Special Research Psychiatry Building Fund
Donor	Houston County Rural Youth
Amount	\$25.00
Fund	4-H Revolving Fund
Donor	Mrs. Oscar Bjorndahl
Amount	\$10.00
Fund	Acceptance Fund, Special Projects Program
Purpose	To establish a fund in accordance with the statement filed supplement to the minutes, page 15,287

SINGLE QUARTER LEAVES

Voted to approve the following single quarter leaves:

George Amberg, Professor, Humanities Program, fall quarter 1963, for a research and writing project devoted to the study of *Surrealist Imagery*, with special emphasis on the surrealist motion picture.

Robert J. Ames, Associate Professor, Humanities Program, spring quarter, 1964, to study renaissance art in Rome.

John Berryman, Professor, Humanities Program, winter quarter, 1964, for final research on and writing of a monograph called *Shakespeare's Friend*.

Robert L. Bliss, Associate Professor, Architecture, spring quarter, 1964, for a comparative study of architectural education and practice.

William H. Dankers, Professor, Agricultural Extension Service, summer, 1963, starting July 15, to study the development and progress of the European Economic Community which is referred to as the "Common Market" and the European Free Trade Association which is referred to as "The Outer Seven Countries."

Willis E. Dugan, Professor, Educational Psychology, winter quarter, 1964, for special study of graduate level programs of counselor education in selected states and universities with particular emphasis on newly developed programs of supervised counseling practicum.

Laddie J. Elling, Associate Professor, Agronomy and Plant Genetics, winter quarter, 1964, for refresher study in plant breeding and statistics at Oregon State University.

Richard Foster, Associate Professor, English, for either the fall or winter quarter, 1963-64, to work on a book dealing with "selfhood" as a major theme in contemporary English and American literature.

Stephan G. Gasiorowicz, Associate Professor, Physics, spring quarter, 1964, to study at the Niels Bohr Institute of Theoretical Physics in Copenhagen, Denmark, on the interrelation between symmetries and dynamics.

John C. Green, Assistant Professor, Geology, Duluth, fall quarter, 1963, for petrologic research and writing.

Edward Gross, Professor, Sociology, spring quarter, 1964, to carry out a study on the sociology of academic administration.

Norton M. Hintz, Professor, Physics, spring quarter, 1964, to study recent developments in nuclear structure theory at the Institute for Theoretical Physics, Copenhagen, Denmark, and the Institute for Atomic Energy of the Polish Academy of Science, Warsaw, Poland.

John D. Hurrell, Associate Professor, English, fall quarter, 1963, to write a book on the relationship between theme and form in dramatic literature.

O. Elden Johnson, Associate Professor, Anthropology, winter quarter, 1964, for an archaeological field survey in West Pakistan.

Harry C. Johnson, Professor, Elementary Education, Duluth, spring quarter, 1964, to study content and methodology of presentation in the new program of modern mathematics for elementary and secondary schools.

Stanley V. Kinyon, Professor, Law School, spring quarter, 1964, for development of new approach, techniques and classroom materials for teaching commercial law.

Robert F. Lambert, Professor, Electrical Engineering, spring quarter, 1964, to study the influence of environmental noise on the performance of communication systems at the Third Physical Institute of the University, Göttingen, Germany.

Donald B. Lawrence, Professor, Botany, fall quarter, 1963, to study the mechanics of accumulation of nitrogen in organisms and soil in the early stages of vegetation development following glacier recession.

Lewis D. Levang, Associate Professor, English, Duluth, spring quarter, 1964, to complete a long essay on the poetry of Andrew Marvell.

J. C. Levenson, Professor, English, spring quarter, 1964, to complete research and write findings on "Robert Frost and Pragmatism."

Jerome Liebling, Associate Professor, Art, fall quarter, 1963, to continue studies in creative photography.

Rufus Lumry, Professor, Chemistry, spring quarter, 1964, to do research on the fundamental mechanisms of hemoglobin function.

Paul L. Murphy, Associate Professor, History, fall quarter, 1963, to complete study of "The Meaning of Freedom of Speech in the U.S., 1919-1933."

Roger B. Page, Associate Professor, SLA Administration, spring quarter, 1964, to gain a better understanding of undergraduate education, particularly in this College and this University by reading and by observation-participation.

Robert Plunkett, Professor, Mechanics, spring quarter, 1964, for liaison with French teachers and investigators in vibration theory.

Alois R. Schmid, Associate Professor, Agronomy and Plant Genetics, summer, 1963, for refresher study in pasture and forage research methods at the Grassland Research Institute at Hurley, England, and Experiment Stations in the British Isles and Europe.

John M. Sivertsen, Associate Professor, Metallurgy, winter quarter, 1964, for research on the electronic structure of alloys of transition metal solutes in noble metal solvents.

Harlan M. Smith, Associate Professor, Economics, fall quarter, 1963, for ethics-economics study.

Eugene Stolarik, Associate Professor, Aeronautics and Engineering Mechanics, fall quarter, 1963, or winter quarter, 1964, to study the effects of surface irregularities on hypersonic aerodynamic heating at European universities and laboratories.

Allen Tate, Professor, English, fall quarter, 1963, to finish a long work in verse and also finish a short book on Edgar Allan Poe.

Albert Tezla, Professor, English, Duluth, winter quarter, 1964, for research leading to the following publication: *An Introductory Bibliography to the Study of Hungarian Authors*.

Walter K. Vivrett, Professor, Architecture, fall quarter, 1963, to study housing in European countries with special emphasis upon housing and institutional facilities for old people.

Cecil J. Watson, Distinguished Service Professor, Medicine, fall quarter, 1963, to work on book on bile pigments and porphyrine in medicine.

Frank M. Whiting, Professor, Speech and Theater Arts, fall quarter, 1963, to visit other members of the Ford Foundation's Theatre Communication Group.

Roy D. Wilcoxson, Associate Professor, Plant Pathology and Botany, fall quarter, 1963, to gain mastery of advanced techniques for studying plant viruses.

John B. Wolf, Professor, History, fall quarter, 1963, to do research at the Archives Nationales in France for book on Louis XIV.

NONCAMPUS SERVICE

Voted to approve the following requests for noncampus service:

General College

Mrs. Jeanne T. Lupton, Assistant Professor, to work on a Social Science course for nurses offered on television for the Twin City Area Educational Television Corporation (for American Nurses Association), St. Paul 13, Minnesota, from January 2 to June 7, 1963

David A. Nordlie, Instructor, to teach one section of sociology for nursing students for Augsburg College, Minneapolis, Minnesota, from January 28 to June 1, 1963

Graduate School

Helmut K. Mangold, Associate Professor, The Hormel Institute, to serve as consultant for the Oak Ridge Institute of Nuclear Studies, Inc., Oak Ridge, Tennessee, from January 1, 1963 to December 31, 1964

Institute of Agriculture

Donald W. Bates, Professor, Extension Agricultural Engineer, Agricultural Extension Service, to be an editorial writer in the field of agricultural engineering for the Hoard's Dairyman, Fort Atkinson, Wisconsin, from January 1, 1963 until indefinite

James I. Brown, Professor, Rhetoric, to develop a course curriculum for instruction in efficient reading for graduate engineers and economists for the United States Corps of Engineers, St. Paul 1, Minnesota, for approximately four days during the period between January 23 and February 1, 1963

Marguerite C. Burk, Professor, Agricultural Economics, to serve as a member of CESS Review—Committee for Home Economics Research at the University of Missouri, for the U. S. Department of Agriculture, Co-operative Experiment Station Service, Washington, D. C., from February 11 to February 14, 1963

E. H. Rinke, Professor, Agronomy and Plant Genetics, to serve as a consultant for American Maize-Products Company, New York, from January 1, 1963 until indefinite

Institute of Technology

Alvin G. Anderson, Professor, Civil Engineering and Hydraulics, to develop a course curriculum for instruction in Hydraulics of Rivers for graduate engineers and economists for the United States Corps of Engineers, St. Paul 1, Minnesota, for approximately three days

Robert P. Featherstone, Research Associate, School of Physics, to serve as a consultant on accelerator design for the University of California, Los Alamos Scientific Laboratory, Los Alamos, New Mexico, from completion of clearance to June 30, 1963

Loyal A. Johnson, Lecturer, Civil Engineering and Hydraulics, to develop a course curriculum for instruction in Hydrology and Irrigation for graduate engineers and economists for the United States Corps of Engineers, St. Paul 1, Minnesota, for three days

Benjamin J. Lazan, Professor and Head, Aeronautics and Engineering Mechanics, to serve as a consultant to Perkin-Elmer Corporation, Electro-Optical Division, Norwalk, Connecticut, from January to December, 1963

Bernard W. Lindgren, Associate Professor, Mathematics, to teach a class in Probability and Statistics at the Rochester plant of the IBM Corporation, from January 29 to April 30, 1963

Richard A. Swalin, Professor and Head, Metallurgy, to provide advice concerning basic research projects in solid state physics for the Minneapolis-Honeywell Research Center, Hopkins, Minnesota, from January 1 to June 30, 1963

College of Pharmacy

George P. Hager, Dean and Professor, Pharmaceutical Chemistry, to attend panel meetings to evaluate 1963 Undergraduate Science Education programs, February 14 and 15, 1963

School of Public Health and University Health Service

George S. Michaelsen, Associate Professor—Industrial Health Engineer, to serve as expert witness in a workmen's compensation case for Donahue, Thompson, Kelly and Smith, Attorneys At Law, St. Paul, Minnesota for one day sometime in March, 1963

School of Business Administration

James Schwinden, Assistant Professor, Economics, to develop a course curriculum for instruction in basic economics for graduate engineers and economists for the United States Corps of Engineers, St. Paul 1, Minnesota

College of Science, Literature, and the Arts

Clifford I. Haga, Assistant Professor, English, to develop a course curriculum for instruction in written administrative communication for graduate engineers and economists for the United States Corps of Engineers, St. Paul 1, Minnesota, from January 18 to February 1, 1963

William L. Hathaway, Assistant Professor, Political Science, to develop a course curriculum for instruction in Political Science for graduate engineers and economists for the United States Corps of Engineers, St. Paul 1, Minnesota, from February 3 to February 7, 1963

George L. Shapiro, Assistant Professor, to develop a course curriculum for 8-12 weeks instruction for graduate engineers and economists for the United States Corps of Engineers, St. Paul 1, Minnesota

University of Minnesota, Duluth

Edward J. Cowles, Associate Professor, Science and Mathematics (Chemistry), to serve as consultant to Dr. Anderson C. Hilding, St. Lukes Hospital, Duluth, Minnesota, from approximately January 15 to June 15, 1963, and to the U. S. Forest Service, Duluth, Minnesota, from April 15 to June 30, 1963

Francis B. Moore, Professor and Head, Science and Mathematics (Chemistry), to supervise a testing program for Cutler-Magner Company and Cutler, LaLiberte, McDougall Corporation, Duluth, Minnesota, from January 1 to June 30, 1963

Larry C. Thompson, Assistant Professor, Science and Mathematics (Chemistry), to act in an advisory capacity for the Duluth Steam Corporation, Duluth, Minnesota, with regard to various chemical problems which arise, from January 1 to December 31, 1963

PRIVATE PRACTICE APPROVAL

In conformity with the policy statement adopted by the Regents on May 12, 1960, on an "Interim Plan for the Regularization of Private Practice by Members of the Medical School Faculty," Dr. Floyd K. Garetz, Instructor in the Department of Psychiatry and Neurology, has filed the appropriate form requesting consultation privileges. This was transmitted by the Dean and the President and approved by the Board.

TENURE CODE EXCEPTIONS

Voted on the recommendation of the Vice President, Academic Administration, and the President, to continue the services of Mr. Martin O. Mundale and Mr. James Pohtilla, Instructors in the Department of Physical Medicine and Rehabilitation, for the academic year 1963-64, under Section 7 of the Faculty Tenure Regulations.

CIVIL SERVICE CHANGES

At the request of the Civil Service Committee and on the recommendation of the Vice President, Business Administration, and the President, voted to approve the following Civil Service changes:

Establishment of Classes

- 8540 State Organization Service Representative, at pay range 22, \$433-526, with the regular vacation allowance and a probationary period of one year, effective November 1, 1962.
- 5162 Superintendent of Plant Services, Duluth, at pay range 34, \$694-844, with a probationary period of one year and the extra one-half day of vacation allowance per month in lieu of overtime pay, effective July 1, 1962.
- 5161 Assistant Superintendent of Plant Services, Duluth, at pay range 31, \$616-751, with a probationary period of one year and the extra one-

half day of vacation allowance per month in lieu of overtime pay, effective July 1, 1962.

Removal of Certain Classes from Pay Range Assignments

Remove the following Civil Service classes from assignment to pay ranges and administer them along with other "Rate by Special Arrangement as Approved" classifications under a new salary administration system for management and professional classes, effective July 1, 1963:

- 1190 Director, Department of Insurance and Retirement
- 1197 Assistant to the Vice President, Business Administration
- 1199 Controller
- 1517 Assistant Director, Civil Service Personnel
- 1518 Director of Civil Service Personnel
- 5165 Supervising Engineer, Maintenance and Operation
- 5167 Supervising Engineer, Construction and Contract
- 6134 Director of University Services
- 6920 Director, Department of Police
- 8325 Director, Department of Concerts and Lectures

Include the following three classifications already administered under "Rate by Special Arrangement as Approved," in this new salary administration system, effective July 1, 1963:

- 1816 Special Attorney
- 3116 Assistant Director, University Hospitals (two positions)
- 8530 Assistant Director and News Editor, Department of University Relations

STUDENT TEACHING AGREEMENT

On the recommendation of the Vice President, Business Administration, and the President, voted to approve an agreement covering student teaching at the Plainview Public Schools, Independent School District No. 810, Wabasha County, Minnesota, filed supplement to the minutes, page 15,288.

MEMBERSHIPS

Voted on the recommendation of the Vice President, Business Administration, and the President to approve the following memberships involving annual dues of more than \$75:

American Hospital Association	\$109.73
Minnesota Hospital Association	49.38
	<hr/>
Total	\$159.11 (School of Public Health Budget)
American Hospital Association	\$1,828.88
Minnesota Hospital Association	823.00
	<hr/>
Total	\$2,651.88 (University Hospitals Budget)

University Mortuary Science Education	\$200.00
American Association of Blood Banks	\$225.00
Association of American Law Schools	\$450.00

PATENTS

The Vice President, Business Administration, reported for the information of the Board the receipt of the following original patent grants, filed supplement to the minutes, pages 15,289 and 15,290:

Application of: Dr. William G. Kubicek
 Serial No.: 597764
 Patent No.: 3,050,050
 Filed: August 21, 1962
 Title: ALTERNATING PRESSURE SEAT

Application of: Dr. William E. Parham
 Serial No.: 603816
 Patent No.: 3,051,759
 Filed: August 28, 1962
 Title: ACETYLENIC ETHERS

HONORS

At the request of the Committee on University Honors, and on the recommendation of the President, voted to approve the awarding of five Alumni Service Awards and five Outstanding Achievement Awards. Biographical data filed supplement to the minutes, page 15,291.

GIFT OF PAINTINGS

The President called attention to the paintings which are hung on the second floor of the Student Center on the St. Paul Campus. This series of paintings was a gift from Mrs. Effie Bornhoft of Rush City, Minnesota, and is entitled "As They Grow."

GUY STANTON FORD RESOLUTION

The President presented the following resolution passed by the Board of Directors of the Minnesota Alumni Association in memory of Guy Stanton Ford for the information of the Board:

Resolved, That in behalf of all Minnesota Alumni, the Board of Directors adopts this resolution in tribute to the memory of

GUY STANTON FORD 1873-1962

a stimulating teacher, distinguished historian, Dean of the Graduate School for a quarter of a century, and sixth President of the University of Minnesota.

His life, devoted to teaching, research and leadership in behalf of higher education, brought great distinction and added prestige to the University. His interest in the advancement of scholarships and in the University was constant throughout his whole lifetime. His support of alumni work while President and after his retirement was likewise a continuing one. His death at the age of eighty-nine ended a career of devoted and unselfish service to the University of Minnesota.

Resolved further, That a copy of this resolution be spread upon the official minutes of the Board of Directors, recording the profound sorrow of its members, and that a copy be transmitted to Mrs. Ford so that the Board of Directors may extend to her and to the members of the family an expression of sincere sympathy and heartfelt condolences.

Resolved further, That copies of this resolution be transmitted to the President of the University and Board of Regents.

APPLICATIONS FOR CONTRACTS AND GRANTS

Voted to approve applications for contracts and grants totaling \$484,808.18; list filed supplement to the minutes, page 15,292.

JUNIOR COLLEGE TASK FORCE REPORT

The President presented the Junior College Task Force Report prepared by a committee under the chairmanship of Dean Horace T. Morse of the General College. Report filed supplement to the minutes, page 15,293.

Voted on the recommendation of the President to adopt the following resolution:

The Board commends the University's Junior College Task Force for the study it has prepared and agrees that planning based on educational considerations points to the need for junior colleges in the Twin City area. It further supports the recommendation that the State Board of Education be encouraged to stimulate the growth and development of junior colleges wherever in the state the need is indicated. The Board encourages the University to assume a more explicit role in the preparation of administrative and teaching personnel for junior colleges.

LIAISON COMMITTEE REPORT

Voted on the recommendation of the President to endorse the report of the Liaison Committee on Higher Education in Minnesota for 1961-63. Report filed supplement to the minutes, page 15,294.

CENTRAL NORTHWESTERN NATIONAL BANK RESOLUTION

On the recommendation of the Vice President, Business Administration, and the President, voted to approve the following resolution:

To approve the establishment of a checking account in the Central Northwestern National Bank, 2329 Central Avenue N.E., Minneapolis, to serve as a depository for receipts from the University Flight Facilities,

located at the Anoka County Airport. This account is to be known as Regents of the University of Minnesota, Flight Facilities Account.

And further to approve the operation of the account under the following conditions:

The Vice President, Business Administration or the Treasurer may designate the signators who are authorized to withdraw funds of this institution from this account, to sign checks and drafts against said account for and on behalf of this institution and to endorse and deposit in said account checks, certificates of deposit and drafts payable to this institution; that the bank is hereby authorized to honor any and all such instruments so signed.

That this institution shall be liable to the bank and shall reimburse it immediately for the amount of any overdraft.

That this account shall be governed by the conditions, rules and regulations of the bank covering commercial accounts and by the rules, regulations and bylaws of the bank now existing, hereafter adopted or as hereafter amended.

And further that this resolution shall continue in force until express written notice of its rescission or modification has been furnished to and received by the bank. That all transactions, if any, in respect to any deposits or withdrawals by or in behalf of the Regents of the University of Minnesota with said bank prior to the adoption of this resolution be and hereby are ratified approved and confirmed.

NATIONAL DEFENSE STUDENT LOANS—DULUTH

The Vice President, Business Administration, explained the requirement of the Department of Health, Education, and Welfare for special procedures at the University of Minnesota, Duluth, in order to qualify for a separate allocation of National Defense Student Loan funds. He called attention to the fact that the suggested procedures were an exception to long-standing principle that all funds were to be controlled centrally.

Voted on the recommendation of the Vice President, Business Administration, and the President to adopt the following resolution:

To approve the establishment of a checking account in the Northern City National Bank, Duluth, Minnesota to serve as a depository for funds which are made available to the University of Minnesota, Duluth, for use under the National Defense Student Loan Program. An initial request of \$90,000 has been made to the Department of Health, Education, and Welfare which will be supplemented by a commitment of approximately \$10,000 from the University of Minnesota, Duluth. Subsequent withdrawals and deposits will result from loans made to students and repayments of principal and interest under the above N.D.S.L. program. This account is to be known as Regents of the University of Minnesota, National Defense Student Loans, Duluth.

And further, to approve the operation of the account under the following conditions:

That checks, drafts, and other withdrawal orders and all other instructions of any character with respect to funds of this corporation now or hereafter with the Bank may be signed by any two of the following:

Raymond W. Darland, Provost
Thomas W. Chamberlin, Academic Dean
Robert W. Bridges, Business Manager

and that said Bank is hereby authorized to pay and charge to the above account any checks, drafts and other withdrawal orders so signed, and to honor any directions or instructions so signed.

That the foregoing individuals are each authorized to endorse and deposit in the above account, checks, drafts, and certificates of deposit payable to this institution and that the Bank is hereby authorized to honor any and all such instruments so signed.

That the Vice President, Business Administration, or the Treasurer of this corporation may from time to time designate additional, alternate, or substitute signators for the above named individuals.

That this institution shall be liable to the Bank and shall reimburse it immediately for the amount of any overdraft.

That this account shall be governed by the conditions, rules and regulations of the Bank covering commercial accounts and by the rules, regulations and bylaws of the Bank now existing, hereafter adopted or as hereafter amended.

That the Northern City National Bank, Duluth, Minnesota, shall secure the deposits of this corporation as provided by law with reference to Depositories of State Funds, set forth in Chapters 7 and 9, 1949 Minnesota Statutes; that the repository of such collateral security shall be determined by the Vice President, Business Administration, or the Treasurer of this corporation.

And further that this resolution shall continue in force until express written notice of its rescission or modification has been furnished to and received by the Bank. That all transactions, if any, in respect to any deposits or withdrawals by or in behalf of the Regents of the University of Minnesota with said Bank prior to the adoption of this resolution be and hereby are ratified approved and confirmed.

SCHOOLS OF AGRICULTURE REPORT

T. H. Fenske, Associate Dean, Institute of Agriculture, presented a report on the current status of the programs at each of the four schools of agriculture. Report filed supplement to the minutes, page 15,295.

COLLEGE OF LIBERAL ARTS AND INSTITUTE OF TECHNOLOGY

At its meeting of September 28, 1962, the Board of Regents approved a reorganization of the College of Science, Literature, and the Arts, and the Institute of Technology which included renaming the above units to the College of Liberal Studies and the College of Physical Sciences and Technology, respectively.

On February 7, 1963, the University Senate, on recommendation of the faculties of the colleges concerned, voted to recommend that the name of the College of Science, Literature, and the Arts be changed to the College of Liberal Arts and that the name Institute of Technology be retained for that unit.

Voted on the recommendation of the President to approve the change in name of the College of Science, Literature, and the Arts to the College of Liberal Arts effective July 1, 1963. Voted, further, to retain the name Institute of Technology for that unit.

ORGANIZATION OF INSTITUTE OF TECHNOLOGY

Voted on the recommendation of the President to approve the administrative organization of the Institute of Technology as contained in Dean Spilhaus' proposal to President Wilson. The new organization is to be effective July 1, 1963. A summary of the proposed organization together with descriptive comments provided by Dean Spilhaus and an organization chart are filed supplement to the minutes, page 15,296.

STAFF HOUSING—PILLSBURY BLOCK

On the recommendation of the Vice President, Business Administration, and the President voted to commission the firm of Setter, Leach and Lindstrom as architects for the preparation of plans and specifications for the construction of staff housing in the Pillsbury block.

1961 BUILDING BILL

The President called attention to the fact that the 1961 Building Bill had been passed by both houses of the Legislature and signed by the Governor. It was moved and seconded that an expression of appreciation be sent to both houses of the Legislature and the Governor for the prompt and statesmanlike manner in which the repassage of the 1961 Building Bill was handled. Approved unanimously.

SECURITIES TRANSACTIONS

Voted to approve the following securities transactions of the Investments Committee, November 1, 1962 through December 31, 1962:

ACQUISITIONS

Purchases—Commercial Paper

Temporary Investment Pool

Par Value	Security	Maturity	Cost
\$500,000.00	American Investment Company of Illinois	4-15-63	\$494,312.50
500,000.00	B-W Acceptance Corporation	4-30-63	494,447.92
500,000.00	C. I. T. Financial Corporation	2-28-63	495,442.71
250,000.00	Dial Finance Company	4-30-63	247,133.68
250,000.00	Export Finance Corpoarion of Canada, Ltd.	3-29-63	247,130.21
250,000.00	Heller, Walter E. & Company	3-15-63	247,222.22
750,000.00	Internaional Harvester Credit Corpora- tion of Canada, Ltd.	4-16-63	741,011.98
500,000.00	Litton Industries, Inc.	5-2-63	493,319.44
500,000.00	Mack Financial Corporation	12-31-62	495,125.00
250,000.00	Northrup, King & Company	3-15-63	247,088.54

Par Value	Security	Maturity	Cost
250,000.00	Peavey, F. H. & Company	3-15-63	247,851.56
500,000.00	R. C. A. Credit Corporation	3-29-63	494,899.31
750,000.00	Ralston Purina Company	2-28-63	742,708.34
700,000.00	Reynolds, R. J. Tobacco Company	12-31-62	698,480.90
700,000.00	Reynolds, R. J. Tobacco Company	3-15-63	694,227.43
450,000.00	Singer Credit Corporation	2-28-63	445,625.00

Purchases—United States Government Agency Obligations

Temporary Investments—Loan Funds

50,000.00	Federal Home Loan Banks Consolidated Notes, 3.15%	3-15-63	50,031.25
-----------	--	---------	-----------

Temporary Investment Pool

500,000.00	Banks for Cooperatives Consolidated Debentures, 3.05%	6-3-63	500,000.00
250,000.00	Federal National Mortgage Association Discount Notes	2-28-63	247,724.31
300,000.00	Federal National Mortgage Association Discount Notes	3-12-63	297,585.42

Purchases—United States Treasury Obligations

DuFresne Memorial Scholarship Fund

5,000.00	United States of America Treasury Bills	4-15-63	4,959.20
----------	---	---------	----------

Group Investments Fund

200,000.00	United States of America Treasury Bonds, 4%	2-15-72	201,000.00
------------	--	---------	------------

Temporary Investments—Loan Funds

100,000.00	United States of America Treasury Bills	1-15-63	99,573.00
------------	---	---------	-----------

Purchases—Corporate Stock

Group Investments Fund

No. of Shares	Security	Class	Cost
100	Borg Warner Corporation	Common	4,127.19
300	International Harvester Company	Common	14,830.65
500	McGraw Edison Company	Common	17,933.75
200	Minnesota Power & Light Company	Common	7,902.12
300	Shell Oil Company	Common	9,855.75
700	Southern Union Gas Company	Common	17,412.50
250	Texas Eastern Transmission Corporation, 5.50%	Preferred	25,625.00
200	United Gas Corporation	Common	6,947.63

Capital Gains Distributions—Corporate Stock

Louise T. Dosdall Scholarship Fund

No. of Shares	Security	Class	Book Value
4	Canadian Fund, Inc.	Common	61.84

Stock Dividends and Splits—Corporate Stock

Group Investments Fund

71	International Paper Company (2%)	Common
27	Pittsburgh Plate Glass Company (2%)	Common
38	Radio Corporation of America (2%)	Common
159	Standard Oil Company of California (5%)	Common
160	Thompson Ramo Wooldridge (10%)	Common

Purchase—University Grove Mortgage

Group Investments Fund

Security	Maturity	Cost
Mortgage Deed and First Mortgage Note, 5%, dated 10-2-62, in the name of Norman W. Moen and Kathryn U. Moen, for leasehold Lot 15 of Block 3, University Grove Addition	10-2-82	19,000.00

DISPOSALS

Maturities—Commercial Paper

Temporary Investment Pool

Par Value	Security	Maturity	Cost	Amount Received
\$500,000.00	American Investment Company of Illinois	12-14-62	\$495,746.53	\$500,000.00
500,000.00	B-W Acceptance Corporation	11-15-62	495,756.94	500,000.00
250,000.00	California Packing Corporation	11-15-62	247,070.31	250,000.00
250,000.00	California Packing Corporation	11-30-62	248,177.09	250,000.00
500,000.00	Central Soya Company, Inc.	12-14-62	495,746.53	500,000.00
500,000.00	C. I. T. Financial Corporation	11-15-62	497,125.00	500,000.00
250,000.00	Emporium Capwell Company	11-15-62	247,234.37	250,000.00
500,000.00	Gamble-Skogmo Acceptance Corporation	12-28-62	495,095.49	500,000.00
250,000.00	General Mills, Inc.	11-15-62	247,070.31	250,000.00
250,000.00	General Mills, Inc.	11-30-62	248,177.09	250,000.00
250,000.00	Green Giant Company.....	11-15-62	247,726.56	250,000.00
500,000.00	Industrial Acceptance Corporation	12-14-62	495,711.81	500,000.00
250,000.00	Libby, McNeill & Libby, Inc.	11-30-62	248,177.09	250,000.00

Par Value	Security	Maturity	Cost	Amount Received
500,000.00	Mack Financial Corporation	12-31-62	495,125.00	500,000.00
250,000.00	Northrup, King & Company	11-15-62	247,140.62	250,000.00
250,000.00	Peavey, F. H. & Company	12-14-62	247,788.19	250,000.00
500,000.00	Pillsbury Company	12-31-62	494,944.44	500,000.00
700,000.00	Reynolds, R. J. Tobacco Company	12-14-62	693,984.37	700,000.00
500,000.00	Seaboard Finance Corporation	12-14-62	495,746.53	500,000.00
250,000.00	Sperry Rand Corporation	11-30-62	246,859.37	250,000.00
250,000.00	Stokely-Van Camp, Inc.	11-30-62	247,427.08	250,000.00
500,000.00	Sunbeam Corporation	11-15-62	493,953.13	500,000.00

Maturities—United States Government Agency Obligations

Group Investments Fund

200,000.00	Federal Intermediate Credit Banks Consolidated Debentures, 3¾%	11-1-62	200,000.00	200,000.00
------------	--	---------	------------	------------

Temporary Investment Pool

1,000,000.00	Banks for Cooperatives Consolidated Debentures, 3.05%	12-3-62	999,843.75	1,000,000.00
500,000.00	Federal Intermediate Credit Banks Consolidated Debentures, 3¾%	11-1-62	500,312.50	500,000.00
400,000.00	Federal National Mortgage Association Discount Notes	11-15-62	396,814.44	400,000.00
600,000.00	Federal National Mortgage Association Discount Notes	12-31-62	594,450.00	600,000.00

Maturities—Corporate Bonds

Group Investments Fund

40,000.00	North American Car Corporation Equipment Trust Certificates, 4%	12-15-62	40,000.00	40,000.00
-----------	---	----------	-----------	-----------

Calls—Corporate Bonds

Group Investments Fund

10,000.00	Montreal, City of, Canada, 5¾%	11-1-79	10,000.00	10,000.00
10,000.00	Sylvania Electric Products, Inc. Sinking Fund Debentures, 5½%	11-1-84	10,000.00	10,000.00

Sale—Commercial Paper

Temporary Investment Pool

Par Value	Security	Maturity	Cost	Amount Received
700,000.00	Reynolds Tobacco Company	12-31-62	698,480.90	698,723.96

Sale—Corporate Bonds

George C. Dittman Memorial Fund

Par Value	Security	Maturity	Book Value	Amount Received
3,890.50	Berlin Power and Light Company, Inc., 4 $\frac{7}{8}$ %	1-1-78	3,890.50	2,948.70

St. Paul Central High School Scholarship Fund

1,000.00	German Government International Loan of 1930 Bonds, 5%	6-1-80	1,000.00	1,050.37
100.00	German Government International Loan of 1930 Bonds, 3%	12-1-72	100.00	89.75

Liquidation—Corporate Stock

Group Investments Fund

No. of Shares	Security	Class	Book Value	Amount Received
1,700	Anderson-Prichard Oil Corporation, 4 $\frac{1}{4}$ % Final distribution; \$111,034.00 previously received. See Minutes, May 1961	Preferred	86,468.75	1,325.61

Sale—Corporate Stock Fractional Share

DuFresne Memorial Scholarship Fund

111/115ths	Standard Oil Company of Indiana	Common	None	49.95
------------	---------------------------------------	--------	------	-------

Liquidations—University Grove Mortgages

Group Investments Fund

Face Value	Security	Maturity
22,500.00	Mortgage Deed and First Mortgage Note, 5%, dated 12-7-60, in the name of Frank Morrell and Lenore K. Morrell, for leasehold Lot 10 of Block 3, University Grove Addition	12-7-80
7,232.97	Mortgage Deed and First Mortgage Note, 4 $\frac{7}{8}$ %, in the name of O. Wm. Muckenhirn for leasehold Lot 1 of Block 5, University Grove Addition	10-1-62

MISCELLANEOUS

Exchanges—United States Treasury Obligations

Temporary Investment Pool

Par Value	Security	Maturity	Book Value
\$500,000.00	United States of America Treasury Notes, 3¾%	11-15-62	\$500,000.00

Exchanged into:

500,000.00	United States of America Treasury Notes, 3½%	11-15-65	500,000.00
------------	---	----------	------------

BUSINESS VICE PRESIDENT'S REPORT

Voted to approve the report of the Vice President, Business Administration to the Chairman of the Executive and Finance Committee, filed supplement to the minutes, page 15,297.

Voted to approve transfers of funds No. 7001 to No. 7500 inclusive.

Voted to approve journal vouchers No. 32001 to No. 34500 inclusive.

Voted to approve requisitions No. 58807 to No. 63578 inclusive.

Voted to adjourn.

L. R. LUNDEN, Secretary