

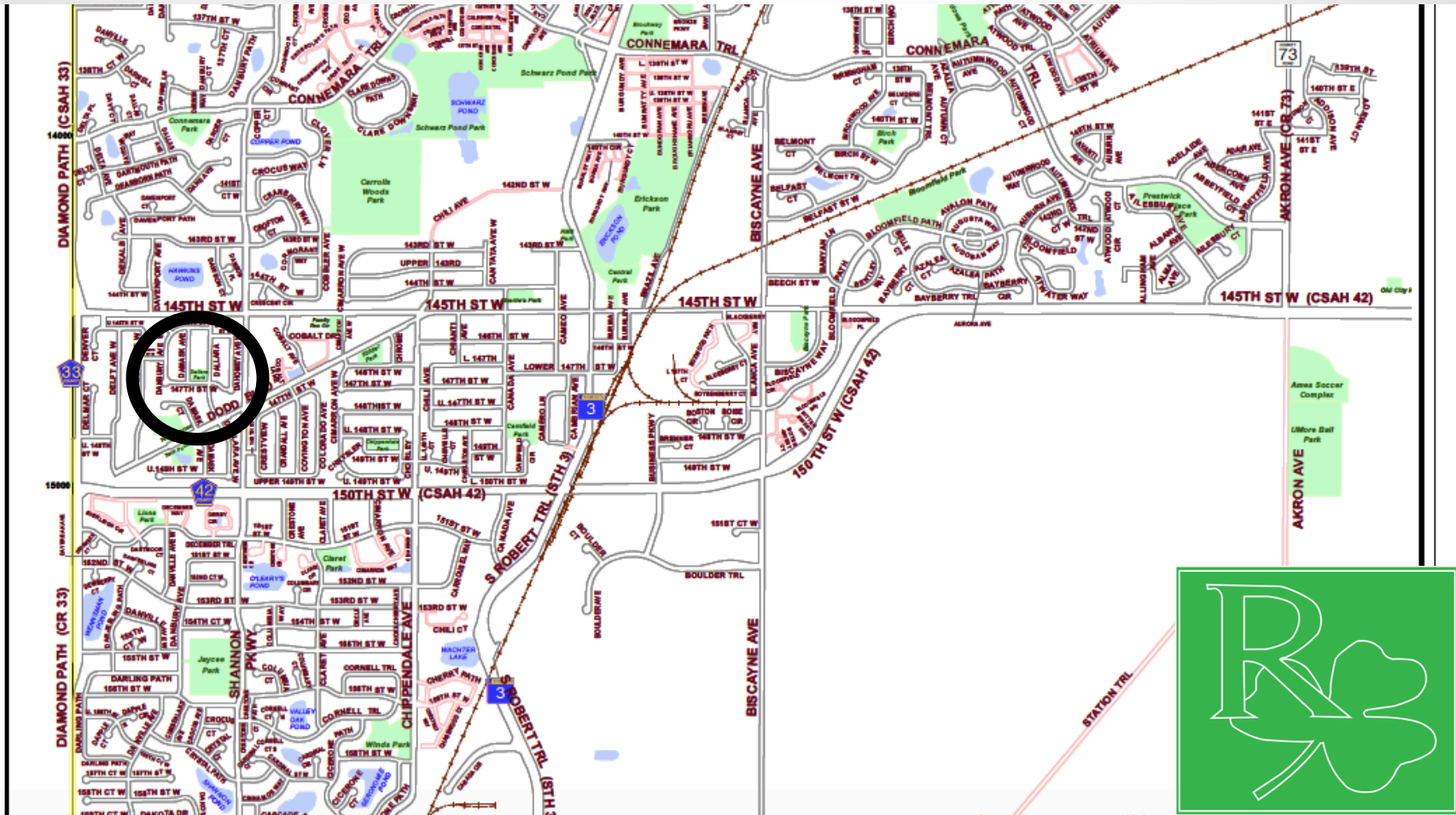
Dallara Park

URBS 3751

Resilient Communities Project

Ian Jacobson, Benjamin Leibham, Kathryn Luk, Nicole Mardell, Baatarchuluun Nyamdechinn, Aaron Person, Kelly Peterson, Alex Simpson, Vang Vang

Location





05/25/2014

© 2014 Pictometry

Park Profile

Dallara Park

ROSEMOUNT
MINNESOTA

Built in 1967
1.04 acres

Full size basketball court, seasonal portable
restroom, trash receptacle, playground

SWOT Analysis

HELPFUL

HARMFUL

INTERNAL

Strengths:

- Central neighborhood location
- Playground
- Basketball court
- Ample on-street parking
- Thirteen trees

Weaknesses:

- Underutilized open space
- Limited access points
- Amenities cater solely to younger population
- Disconnection to neighborhood
- Location of private mailboxes

EXTERNAL

Opportunities:

- Add bicycle parking
- Provide additional access points + paths
- Utilize transitional activity space; diversify park activities
- Potential for community programming

Threats:

- Lack of promotion for residents
- Pedestrian safety at risk due to limited street access
- Potential cramming of amenities
- Large trees can conceal illegal activity

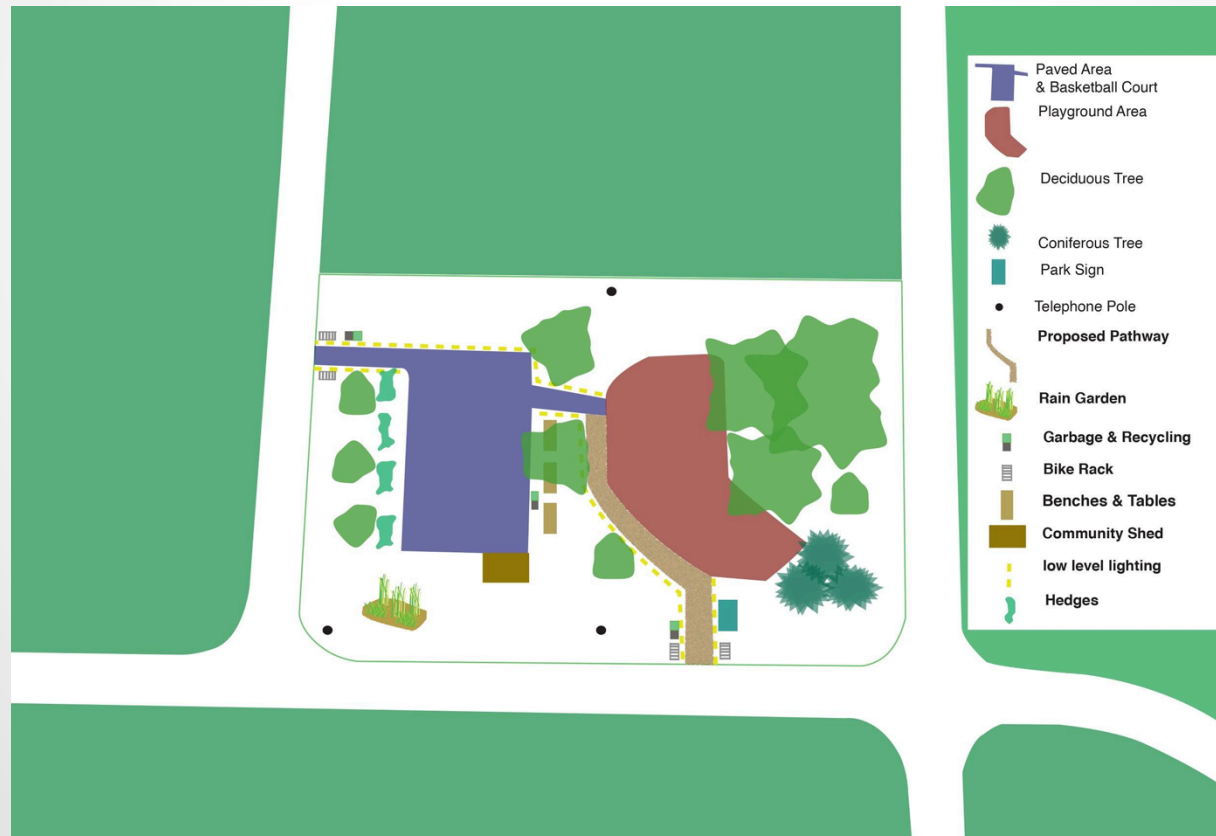
Opportunities For Growth



- Provide additional access points
- Add places to sit
- Utilize space + location

Access, Linkage, Lighting + Safety

- CPTED Principles
- Lighting for natural surveillance
- Landscaping + paving for access control



Placemaking + Community Engagement

- Provide benches + tables
 - Tables with individual shades
- Unique sign representative of community



Community Gathering

- Provide parking for bicycles
- Upgrade basketball hoops
- Place storage shed for yard games
- Host weekly programs + events



Ecological Functions



- Replace cut-down trees with infant trees
- Plant hedges around basketball court
- Create rain garden with native prairie plants

Potential Improvements

Phase 1:

- Plant more native plants
- Renovate park sign (commission local artist)
- Add bicycle racks
- Add picnic tables + benches
- Add permanent recycling + refuse bins
- Add access points + pathways
- Add equipment shed
- Increase community programming

Phase 2:

- Create rain garden
- Replace cut-down trees
- Move mailboxes
- Upgrade basketball hoops
- Plant hedges between basketball court and street
- Improve lighting system (with neighbor approval)
- Lay additional pathways

Phase 1

- Plant native vegetation
- Renovate park sign (commission local artist)
- Add bicycle racks
- Add picnic tables + benches



<http://www.extension.umn.edu/garden/landscaping/maint/images/TurfgrassSelectionImages/Fig4.41-Prairie%20Boulevard-credit.JPG>

Phase 1

- Add permanent recycling + refuse bins
- Lay additional pathways
- Add equipment shed
- Increase community programming



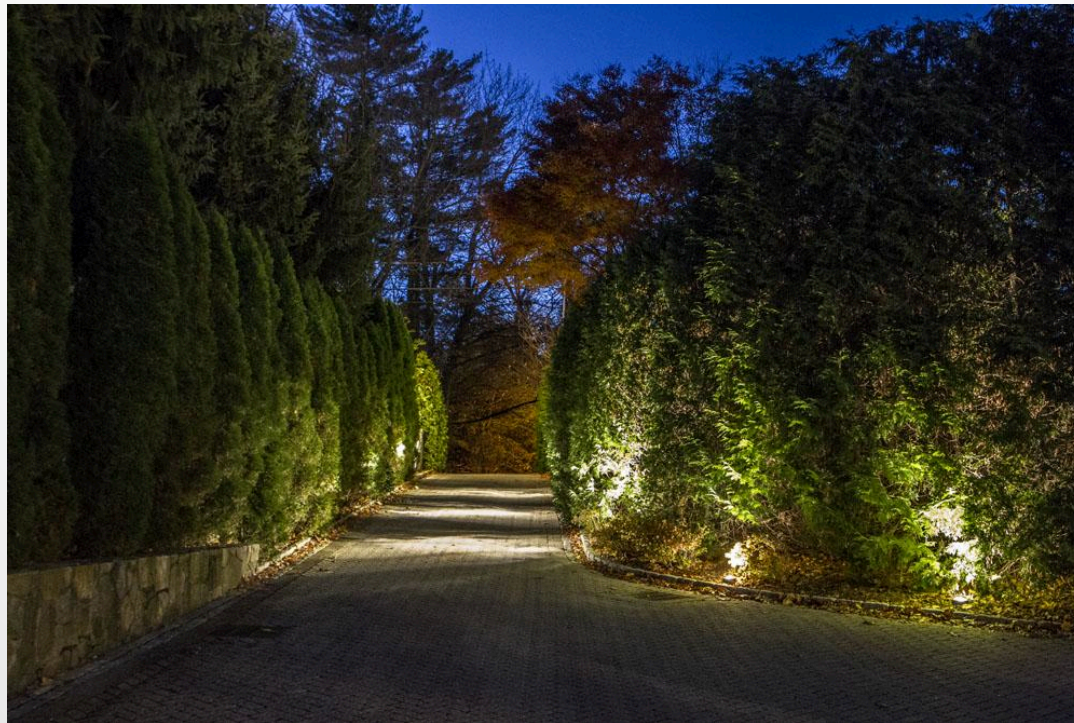
Phase 2

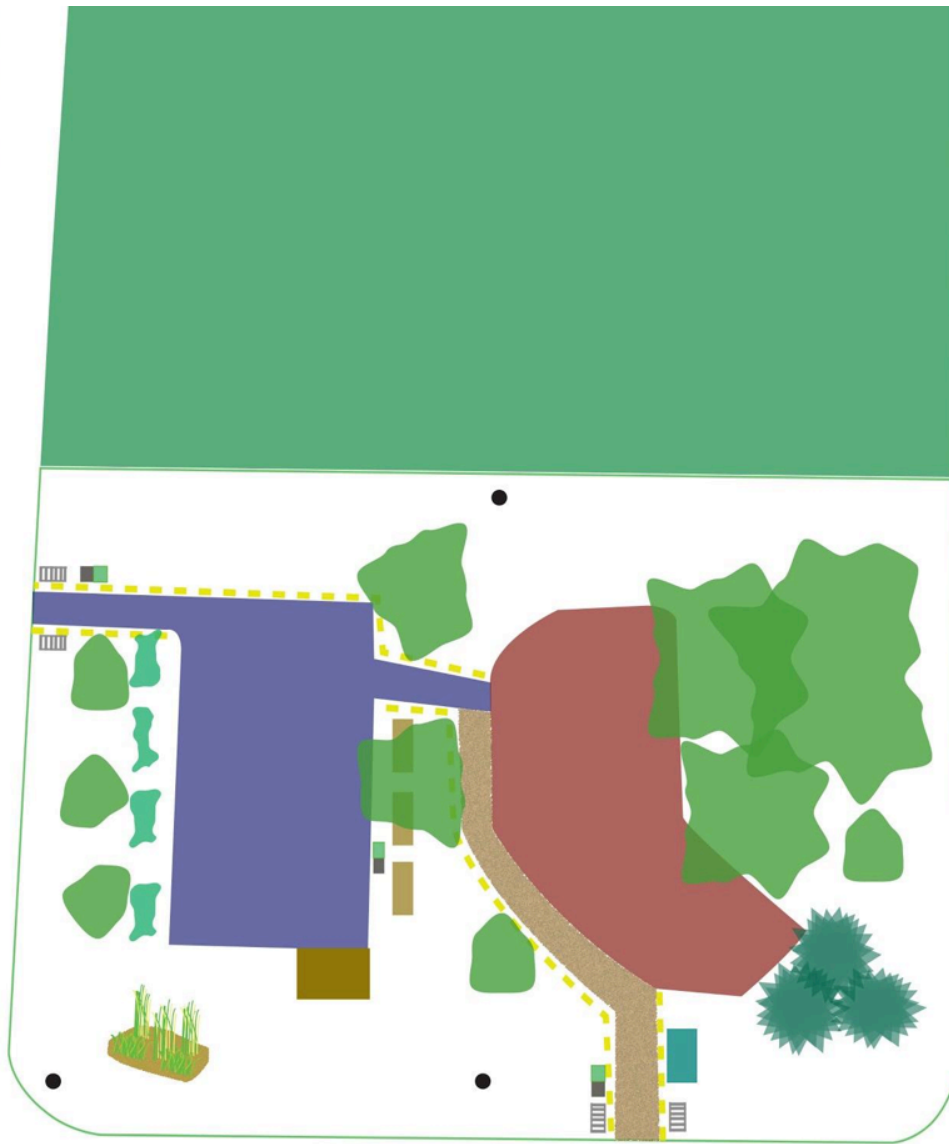
- Create rain garden
- Replace cut-down trees
- Move mailboxes
- Upgrade basketball hoops



Phase 2

- Plant hedges between basketball court and street
- Improve lighting system (with neighbor approval)
- Lay additional pathways around or through the park





-  Paved Area & Basketball Court
-  Playground Area
-  Deciduous Tree
-  Coniferous Tree
-  Park Sign
-  Telephone Pole
-  Proposed Pathway
-  Rain Garden
-  Garbage & Recycling
-  Bike Rack
-  Benches & Tables
-  Community Shed
-  low level lighting
-  Hedges

Questions or Comments?