

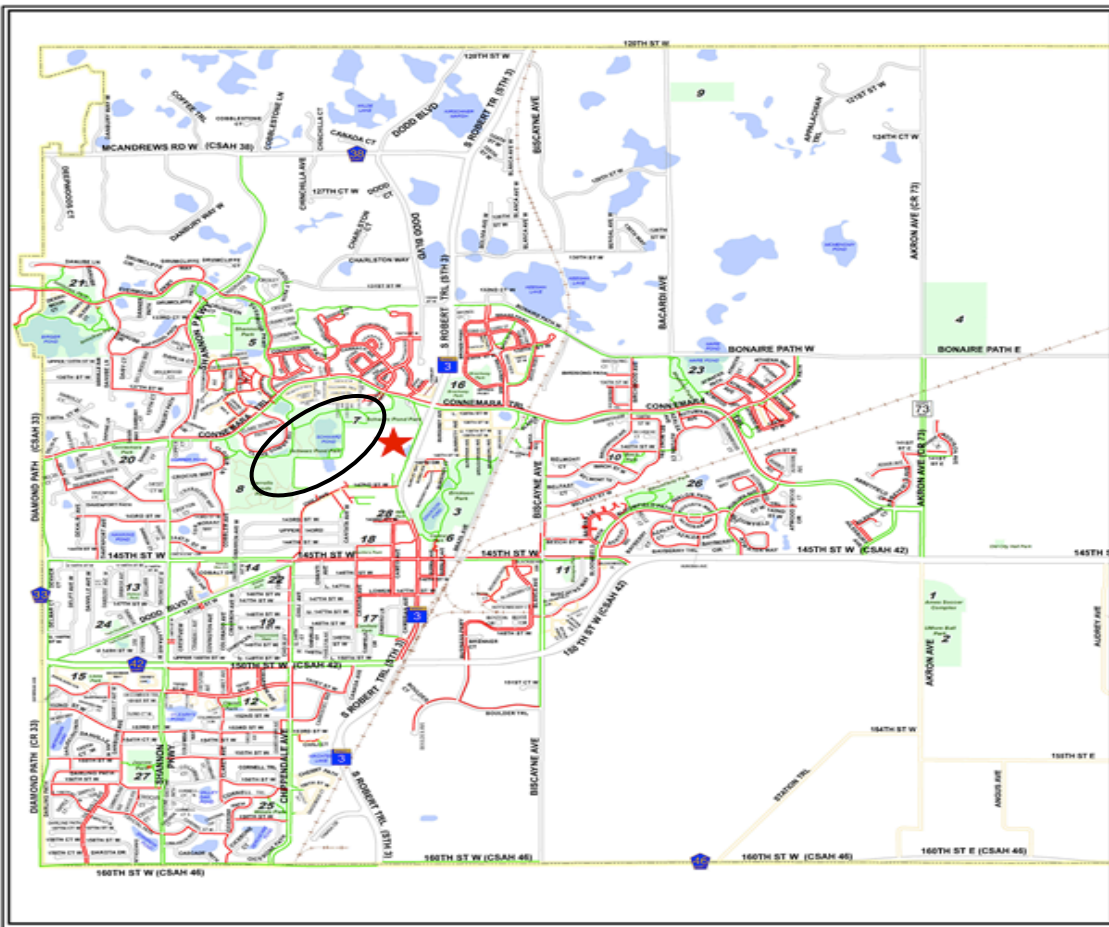
Schwarz Pond Park

Rosemount Resilient Communities Project



Hailey Alexander, Hans Bremhorst, Kyle Burr, Jasmine Hippe, Amelia McGee, Anna Miller, Joseph Schloesser, Erik Stephenson, Eric Vargo, Jocelyn Wolff

Digital image. Google Images. 2015



Trails and Parks Map City of Rosemount

Legend

- Parks
- ~ Bituminous
- Water
- ~ Sidewalks
- ~ Nature
- ★ Rosemount Community Center

Park Amenities:												
Existing Element	Acres	Baseball	Baseball - Old Ball	Baseball - New Ball	Baseball - Old Field	Baseball - New Field	Baseball - Old Area	Baseball - New Area	Baseball - Old Fences	Baseball - New Fences	Baseball - Old Equipment	Baseball - New Equipment
ATHLETIC COMPLEXES												
1 Ames Soccer Complex (at DCTC) 1300 145th St E	10.36											
2 Umcore Ball Park, 14850 Akron Ave	27.48											
3 Erickson Park, 14115 Broad Ave	45.1											
4 Flint Hills Recreation Complex 135th St W & Akron Ave	57.62	Undeveloped										
5 Shannon Park, 13260 Shannon Pkwy	24.76											
COMMUNITY PARKS												
6 Central Park, 2893 145th St W	6.28											
7 Schwarz Pond Park, 13787 Dodd Blvd	62.28											
CONSERVANCY LAND												
8 Carrolls Woods, 3335 142nd St W	44.45											
9 Wiklund Preserve, Barcard Ave.	14.97	Preserve										
MINI PARKS												
10 Birch Park, 2181 Birch St	3.52											
11 Biscayne Park, 2420 145th St W	3.08											
12 Claret Park, 15130 Claret Ave	2.63											
13 Dallara Park, 4175 147th St W	1.04											
14 Family Resource Center Park 14521 Cimarron Ave	1.24											
15 Lions Park, 15155 December Trail	1.94											
NEIGHBORHOOD PARKS												
16 Brookway Park, 13669 Bronze Pkwy	14.36											
17 Camfield Park, 14795 Canada Ave	3.10											
18 Charles Park, 3155 144th St W	1.26											
19 Chippendale Park, 14876 Chrysler Ave	2.11											
20 Connemara Park, 13930 Connemara Tr	4.79											
21 Innatree Park, 4270 Evermoor Pkwy	55.82											
22 Kidder Park, 3652 146th St W	2.13											
23 Meadows Park, 13960 Azalea Ave	26.44											
24 Twin Puddles Park, 14884 Dodd Blvd	5.40											
25 Winds Park, 15675 Chippendale Ave	7.09											
NEIGHBORHOOD PLAYFIELDS												
26 Bloomfield Park, 14225 Bloomfield Path	13.75											
27 Jaycee Park, 15425 Shannon Pkwy	14.06											
SPECIAL USE PARK												
28 RMS Rink, 3135 143rd St W	0.63											

Date Saved: 7/19/2013 2:00:17 PM

Location:

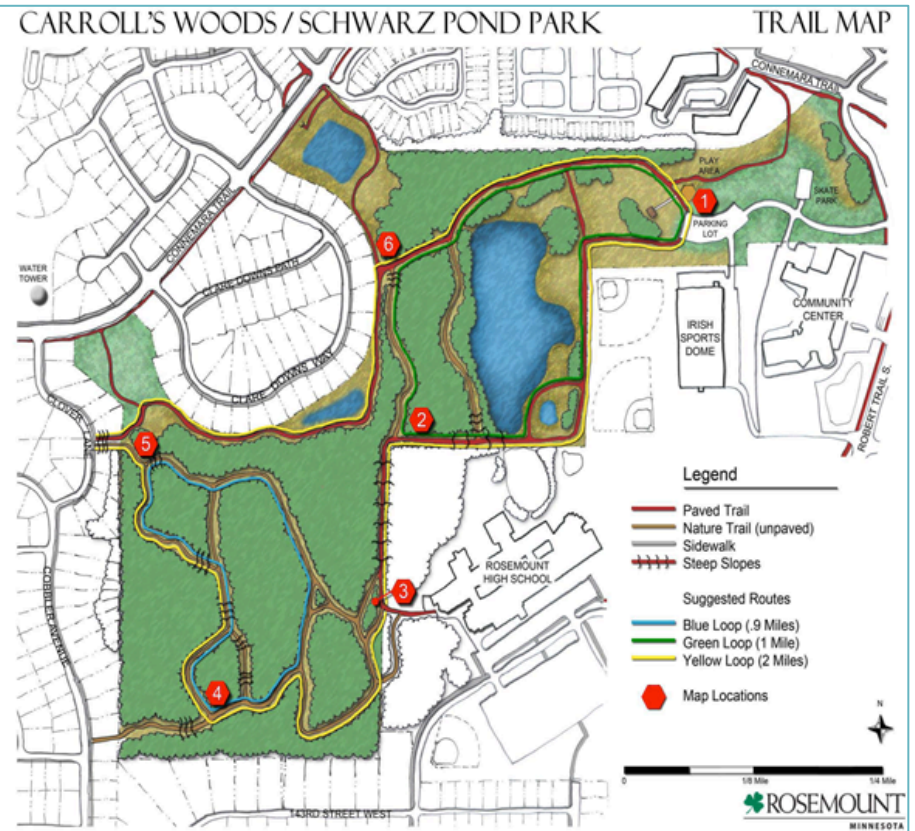
13787 Dodd Blvd
Rosemount, MN 55068

Amenities:

- Barbecue Grills, Nature Areas, Parking, Picnic Shelter, Playground Equipment, Skate Park, and Walking Trails
- Schwarz Pond Park is the site of the annual Leprechaun Days Fishing Derby and the city's only skate park.
- In close proximity to Carrolls Wood's, Rosemount High School, and Rosemount Community Center.



Digital image. Google Images. 2015



"Schwarz Pond Park." *Rosemount Minnesota*. City of Rosemount, 2015. Web. <<http://ci.rosemount.mn.us/facilities.aspx?pagenum=2&RID=26&Page=detail>>.

SWOT Matrix

HELPFUL

HARMFUL

INTERNAL

Strengths

- Largest amount of open, workable space
(The park can act as large canvas or blank slate for the community to build and create on).
- Close proximity to major civic functions like the community center and High School
(The park is in a highly trafficked area and able to engage large amounts of people).
- Established trail system
(Bike paths are there and easily connectable to other parks to create a citywide trail system).
- Natural Environment
(The pond and a variety of ecosystem types create a diverse, engaging space supporting wildlife).

Weaknesses

- Limited Lighting
(In a large park limited lighting could increase safety and security issues around the skate park and on the trails).
- Large amounts of open space
(Different land conditions and large amounts of open space require increased cost and labor in order to be maintained).
- Absence of public restrooms, water, and electrical access
(The inclusion of these conveniences within the park would greatly improve its usability).

W

EXTERNAL

Opportunities

- Establish it as city center, a place to host large functions and events and to promote civic engagement
- Utilize the Pond to promote biodiversity and wildlife management and education
- Increase city connectivity by connecting its pathways to other parks

Threats

- Financial limitations
(The park is large and wide scale overhauls could become expensive).
- Community resistance or lack of interest in implementing new functions
- Nearby roads, homes, and buildings could pollute the park ecosystem

T

SWOT Matrix

Strengths

- Largest amount of open, workable space
(The park can act as large canvas or blank slate for the community to build and create on).
- Close proximity to major civic functions like the community center and High School
(The park is in a highly trafficked area and able to engage large amounts of people).
- Established trail system
(Bike paths are there and easily connectable to other parks to create a citywide trail system).
- Natural Environment
(The pond and variety of ecosystem types create a diverse, engaging space supporting wildlife).

SWOT Matrix

Weaknesses

- Limited Lighting

(In a large park limited lighting could increase safety and security issues around the skate park and on the trails).

- Large amounts of open space

(Different land conditions and large amounts of open space require increased cost and labor in order to be maintained).

- Absence of public restrooms, water, and electrical access

(The inclusion of these conveniences within the park would greatly improve its usability).

W

SWOT Matrix

Opportunities

- Establish it as city center, a place to host large functions and events and to promote civic engagement
- Utilize the Pond to promote biodiversity and wildlife management and education
- Increase city connectivity by connecting its pathways to other parks

SWOT Matrix

Threats

- Financial limitations
(The park is large and wide scale overhauls could become expensive).
- Community resistance or lack of interest in implementing new functions
- Nearby roads, homes, and buildings could pollute the park ecosystem

Placemaking and Community Engagement

Our goal is to increase the utility of Schwarz Park, keeping in mind the diversity and various interests of Rosemount community members.

Access and linkage, Lighting, and Safety

Improve and increase light sources and access points to create a safer and more utilized park.

Recommendations



Photo credit:www.twincities.com

Community Gathering Enhancements

By creating a wide variety of functions to attract and entertain diverse residents, we facilitate spontaneous interactions and a sense of empowerment.

Ecological Functions

Promote a healthy land ethic and sense of ecological pride for Rosemount residence as they enjoy the areas largest low-development recreational space.

Placemaking and Community Engagement

THE COMMUNITY IS THE EXPERT

- Involve residents in the process
- Acknowledge changing demographics

YOU ARE NEVER FINISHED

- “Amenities wear out, needs change and other things happen in an urban environment”



Photo Credit: Shutterstock



Photo Credit: Galleryhip



Photo Credit: Shutterstock

Access and linkage, Lighting, and Safety

- Add approved pathways along residential property lines to provide connections between the park and neighborhood.
- Allow for more entrances to the park and routes of transportation by installing bus stops along Connemara Trail.
- Provide modes of public transit in proximity to Schwarz Park.



Photo Credit: www.metrotransit.org

Access and linkage, Lighting, and Safety

- Implement handicap accessible pathways throughout the park and from the parking lot to the baseball field.
- Improve lighting and night time visual safety by adding energy-efficient lighting. Alternate solar powered motion-sensor lights every 40ft along all existing pathways throughout Schwarz Park.

(Photo: Lighting fixture example. \$21.95 / light SecurePal Series, www.siliconsolar.com)

Detects motion
within 7 feet

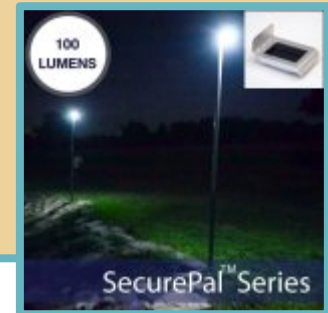


Photo Credit:
www.siliconsolar.com



Photo Credit: www.amazon.com

Community Gathering Enhancements

- Introduce a fenced-in off-leash dog park as a gathering space for not only dogs but also their owners. This will also provide better utilization of the large amount of space.
- Redesign the ageing skatepark. Include 10 - 18 year old residents in this process.
- Add sculptures or other community art in order to create a sense of community pride and togetherness.



Photo Credit: walkyourdogastin.com



Photo Credit: somersecountyparks.org

Ecological Functions

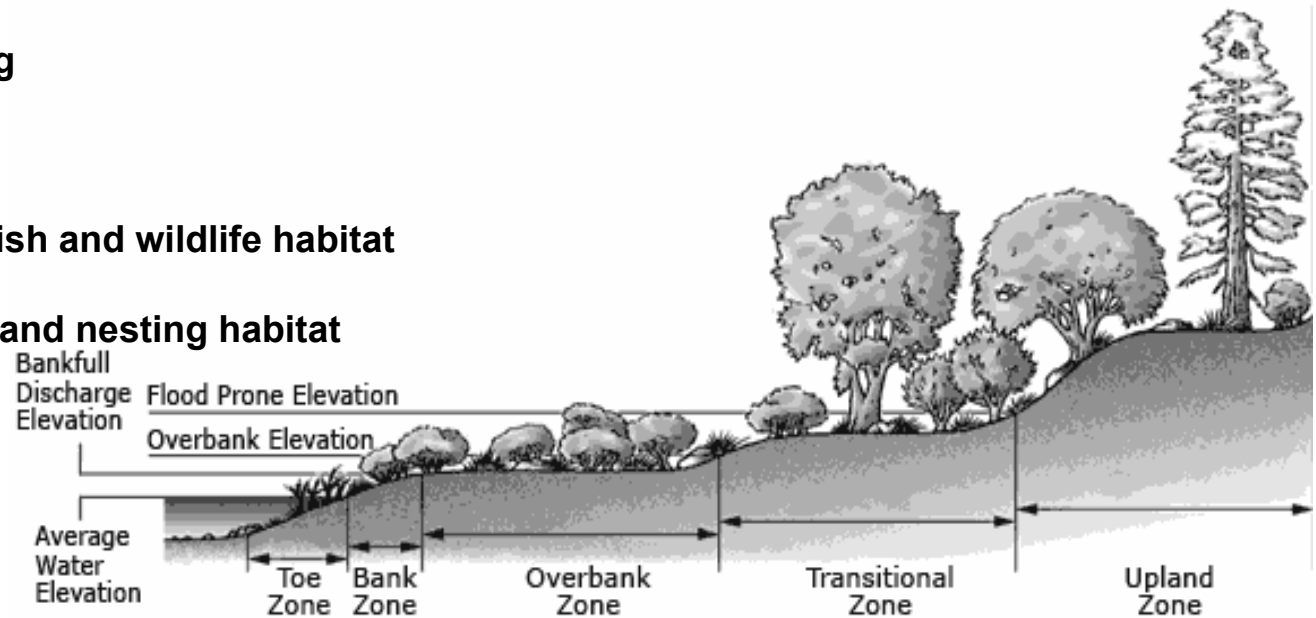
- Install informational signs near trails, pond, and prairies providing elaboration on ecological features of the park such as the types of plants and wildlife found there, why prairie grasses have been planted, and the history of the park/pond.
- Engaging with nature is fun for children.
- Helping people to understand their environment builds stewardship among park patrons and encourages the social-environmental memory of our impact on this planet.



Proposal: Strengthen Riparian Buffer by introducing and increasing beneficial and aesthetically pleasing plant species.

Benefits of strengthening surrounding Riparian Buffer:

- 1) Reduced water pollution
- 2) Protection from Flooding
- 3) Erosion Control
- 4) Protects and improves fish and wildlife habitat
- 5) Enhance pollen, nectar, and nesting habitat for pollinators
- 6) Increase net carbon storage in biomass and soils



http://www.nrcs.usda.gov/Internet/FSE_MEDIA/nrcs144p2_049224.gif

Proposal: Strengthen Riparian Buffer by introducing and increasing beneficial and aesthetically pleasing plant species.

Recommended size for Riparian buffer:

- Optimum effectiveness: 150 feet
- Minimum requirement: 35 feet

-NRCS (Natural Resources Conservation Services) Riparian Forest Buffer Standard.

Species to add/increase:

-Shoreline Plant: Cattail

-Flowering Species: Blue Verlaire, Spotted Jewelweed, Joe-Pye Weed, Marsh Marigold, Swamp Milkweed, Ironweed, Cardinal Flower, Goldenrods, Blue Flag Iris, sedge

-Floating Species: Minnesota native waterlilies such as American white water lily, Yellow pond lily, and the American lotus.



Blue Flag Iris



Cardinal Flower



Joe Pye Weed

All information courtesy:

<http://ecology.com/wp-content/uploads/2011/09/Riparian-restoration.jpg>

<http://images.fineartamerica.com/images-medium-large/blue-flag-iris-michael-keaton.jpg>

<http://ku69.net/flowers/cardinal-flower-spectacular-scarlet-blossoms-that-hummingbirds-adore/attachment/cardinal-flower-108/#image-1>

<https://davernfarm.files.wordpress.com/2012/07/p1013650.jpg>

Rosemount Skatepark

The Rosemount skatepark is unpopular because:

- Design does not reflect the desires of riders or the current practices of the sport
- Ramps are deteriorating, and made out of a functionally less preferred material (metal)
- Ground surface is rough and slow-drying
- Fenced off from the rest of the park and distant from other amenities used by the Skate Park's primary age group.
- Aesthetically displeasing to users and other park-goers alike; "Like a prison yard"





Two Scenarios

The following are two potential ways to develop Schwarz Pond Park. One is a collection of Must Haves, based on a limited budget and the most pressing needs of the park. The other is a collection of things that Would Be Nice, which would add more value to the park as a recreation and gathering spot.

“Must Have”

- Refurbishing and modernizing the skate park
- Installation of a dog park
- Improved lighting with power saving features
- New signage
- Improved park access and connectivity
- Restroom facilities



Photo Credit: www.publicdomainpictures.net

“Would Be Nice”

- Dog Park with water feature and play structures
- Nature Play area for children
- Significant amounts of community artwork, themed to each park area
- Projection space or gathering area
- Signage for adults and children
- Lighting to enhance or create unique aesthetics
- Recycling bins



Photo Credit: wp.miragearts.com

A “Must Have” Scenario

Skate Park

- A refurbished and modern designed with the input and ideas of residents aged 10-18.
- Best practices and modern design features from across the country can be found at www.skateparkguide.com.
- Removal of the current fence, improved lighting for evening use, and improved connectivity to the rest of the park are advisable.

Dog Park

- One acre ideally in the area near the northeast corner of the pond.
- A functional park will have a baggy station, clean water source, trash receptacle, and fences at least six feet high.

Increased lighting

- Enhances park safety and attractiveness.
- Light posts with energy saving features are recommended every 40 feet, closer in wooded areas.
- Special attention should be paid to the skate park, picnic shelter, trail junctions and parking area.

A “Must Have” Scenario

New signage

- Installed for amenities, distance of various paths and loops, a city parks map, and other useful information.

Improved pedestrian and transit access

- Increase safe routes for children.
- Bike racks in key locations will help facilitate accessibility.

Include restroom facilities

- A basic amenity that will encourage visitors to enjoy the park for longer periods of time

A “Would Be Nice” Scenario

Dog Park

- Include areas for owners to sit, a water feature, and separate large/small dog play areas.

Nature Play

- Area for children
- Include large rocks and artificial hollow tree stumps
- Near the northwest corner of the pond where Schwarz Pond Park and Carroll’s Woods Park meet.

Engaging signage and lighting

- Unique design and installations, perhaps as part of an art piece, is encouraged.
- Lighting in particular enhances evening aesthetics as well as park functionality.

Artwork

- Sculpture and pathway mosaics made by local artists and with the input and preferences of the community.
- Could be standalone or incorporated into lighting, signage, play structures.
- Could be themed to each park area.

A “Would Be Nice” Scenario

Interior projection space

- A gathering area separate from or complementing the existing picnic shelter.
- Potential uses include a small band shell, a place for community events, or a place for small groups to have outdoor movies.

“Tour De Parks”

- A city wide event emphasizing the parks and trail system

Recycling bins

- Placed in the park to accompany trash bins.