

Chippendale Park

14876 Chrysler Ave, Rosemount, MN 55068



Existing Features

- Basketball court ←
- Little league field ←
- Ice skating ←
- Playground ←
- Picnic benches ←
- Portable toilet ←

Purpose

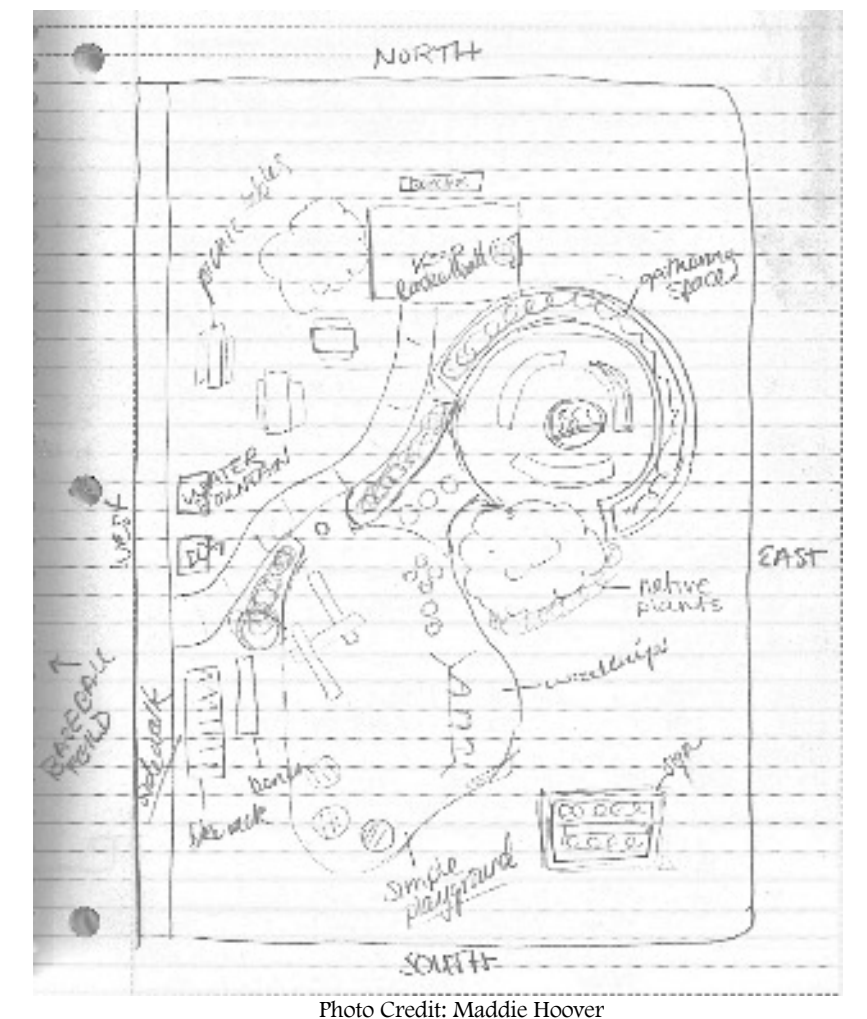
This project was completed as part of UrbS 3751: Understanding the Urban Environment, a course at the University of Minnesota, with support from the Resilient Communities Project (RCP). RCP is an initiative of the Sustainability Faculty Network at the University of Minnesota, with funding and administrative support by the Center for Urban and Regional Affairs (CURA) and the Institute on the Environment (IonE). To learn more, visit rcp.umn.edu.

The City of Rosemount was chosen as this year's community partner for the Resilient Communities Project. Parks are a gathering space for active and passive uses, but Rosemount was interested in making these spaces more of a destination, not only because of the activities programmed in the space but also because of the natural or built attributes of the spaces.

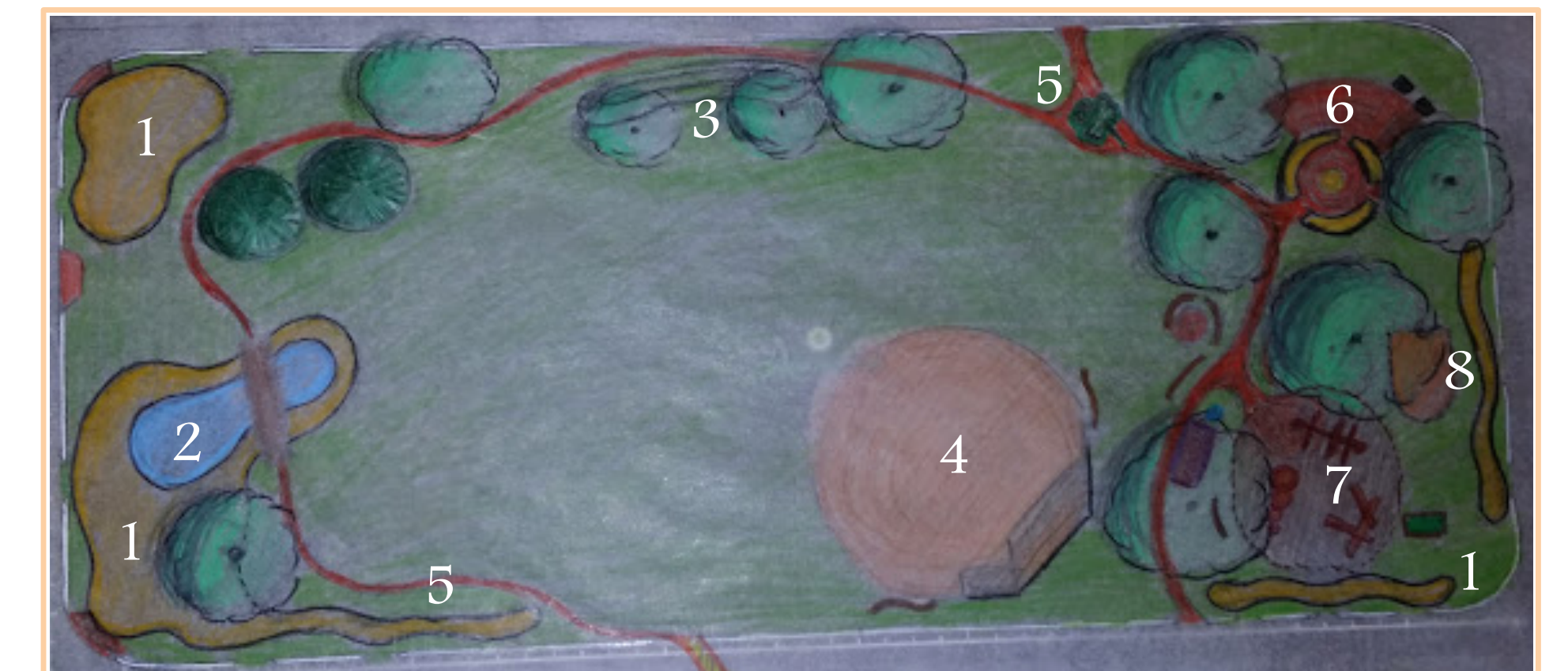
UrbS 3751 worked in teams to develop concept designs for seven parks in Rosemount. This poster demonstrates the teamwork of Josh Lee, Becky Rosdahl, Luke Carlson, Shelby Rutzick, Eric Garlough, Micaela Resh, Rachael Grunfelder, Maddie Hoover, and Matt Jarvi.

Initial Recommendations

- Community garden
- Shelter
- Replacing the playground equipment with natural elements
- Community fair-share library
- Connecting all parks with routes and signage to make parks a destination



Proposed Recommendations & Opportunities



A community garden and shelter were eliminated from the final recommendations due to discussions with the surrounding neighborhood. This park was described by community members as a place where parents feel safe sending their children, but a shelter would visually obscure the park from some houses. There was a lack of interest in a community garden from those who shared their opinion. Our final recommendations can be found by their representative number on the sketch above:

1. Native plantings/rain gardens
2. Small with a bridge
3. Additional and a low brim so surrounding houses can still see the entire park but will aid with game balls from rolling into the street
4. Updated multi-purpose field
5. Walking path
6. Raised bed flower garden with built-in seating around a fire pit or raised bed
7. Natural elements playground
8. Relocated, larger basketball court



Existing Assets & Features

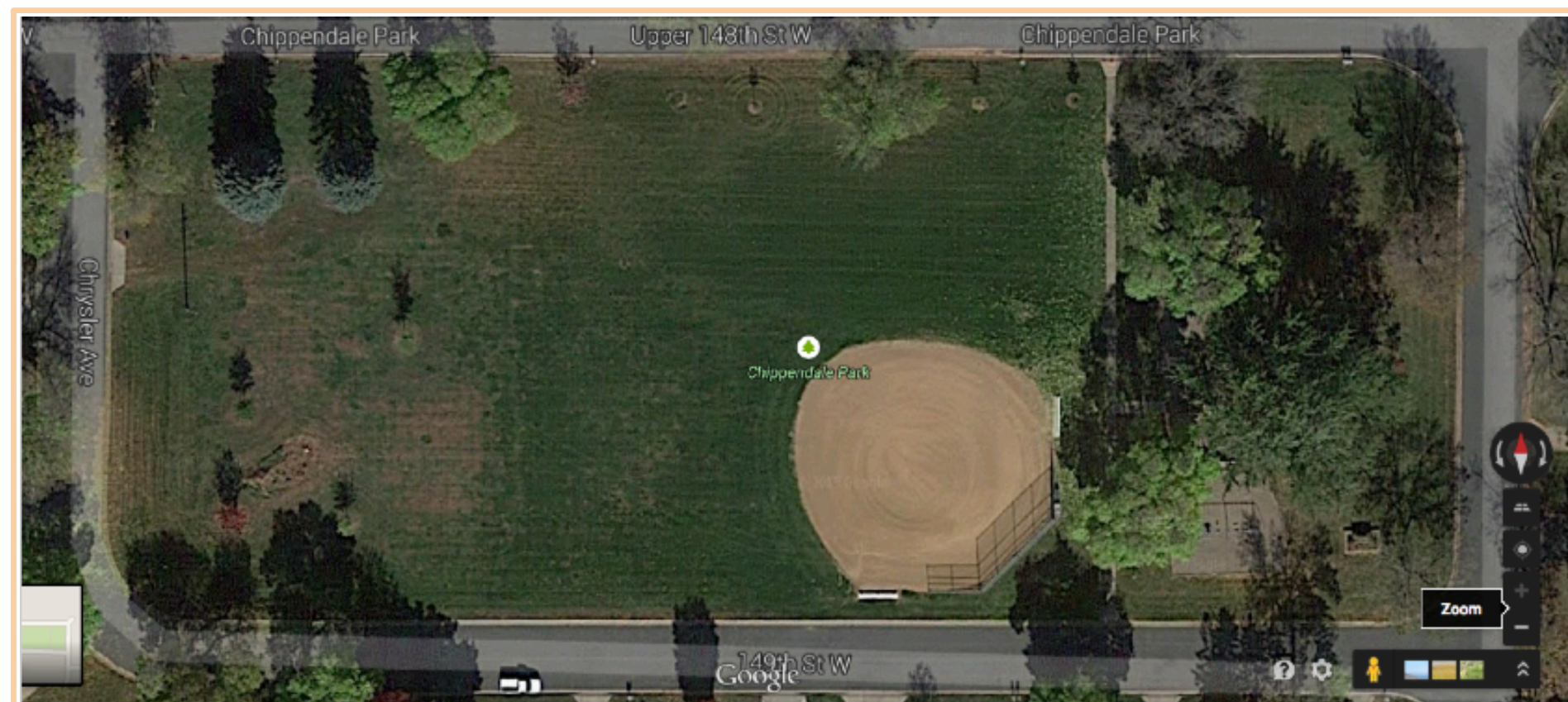


Photo Credit: Maddie Hoover

Photo Credit: Maddie Hoover

Photo Credit: Maddie Hoover

Research & Methods

Strengths

- Basketball Court
- Little league field
- Playground
- Flat, open land
- Large trees
- Surrounded by neighborhood

Weaknesses

- Few seating areas
- No shelter
- No bath
- Deteriorating playground barrier
- Only on-street parking
- No bike racks

Opportunities

- Native plants or community garden
- Shelter or gazebo with fire pit
- Park lighting
- Upgrades to fields
- Updated playground equipment
- Walking paths
- Water feature

Threats

- Sensitivity to neighborhood wants / needs
- Lack of access to water and electricity
- Upkeep requirements for proposed gardens
- Fire pit restrictions for Rosemount



Photo Credit: <http://www.ci.rosemount.mn.us/facilities.aspx?search=1&CTD=5&RTD=115&Page=detail>

A place where....

Sustainability

Education

Disability access

Comfort

Uniqueness

...are a priority.