

BISCAYNE PARK

2420 145th St. W., Rosemount, MN

The city of Rosemount was selected to partner with the Resilient Communities Project (RCP) and engage with University of Minnesota students in a semester-long assignment focusing on Rosemount's parks. Paula Pentel's URB 3751 course, Understanding the Urban Environment, was given the assignment of identifying opportunities to enhance existing or create new gathering enhancements in seven of Rosemount's 28 parks. The ultimate goal was to transform the park space into a destination place through use of the natural landscape, programmed activities, and park amenities. Students in URB 3751 worked in teams to assess and develop concept ideas for their respective parks. This poster presents the collaborative efforts of Mitchell Ericksen, Nisa lab Lee, Olivia Mackert, Marco Garcia, Dan Rusin, David Fauth, Leigh Languun, Lee Hojoong, and Alexandra Paurus, who developed the final concept design proposal for Rosemount's Biscayne Park.

OVERALL OBJECTIVE

Analyze and transform Biscayne Park into a destination place by identifying opportunities to enhance existing or create new gathering spaces through use of the natural landscape, programmed activities, and other park amenities.

METHODS & FINDINGS

SWOT Assessment:

Strengths

- Community garden strengthens local bonds
- Access to portajohn
- Green space
- Proximity to residents

Weaknesses

- Lack of connectivity to greater trail system
- Limited utilities
- Bike parking
- Limited amenities

Opportunities

- Enhance trail linkages
- Improve park landscape
- Picnic shelter & grill
- Utilization of green space
- Additional lighting in park

Threats

- Parking issues (CAP)
- Too noisy for local residents
- Changes to park may disturb users

Primary concerns:

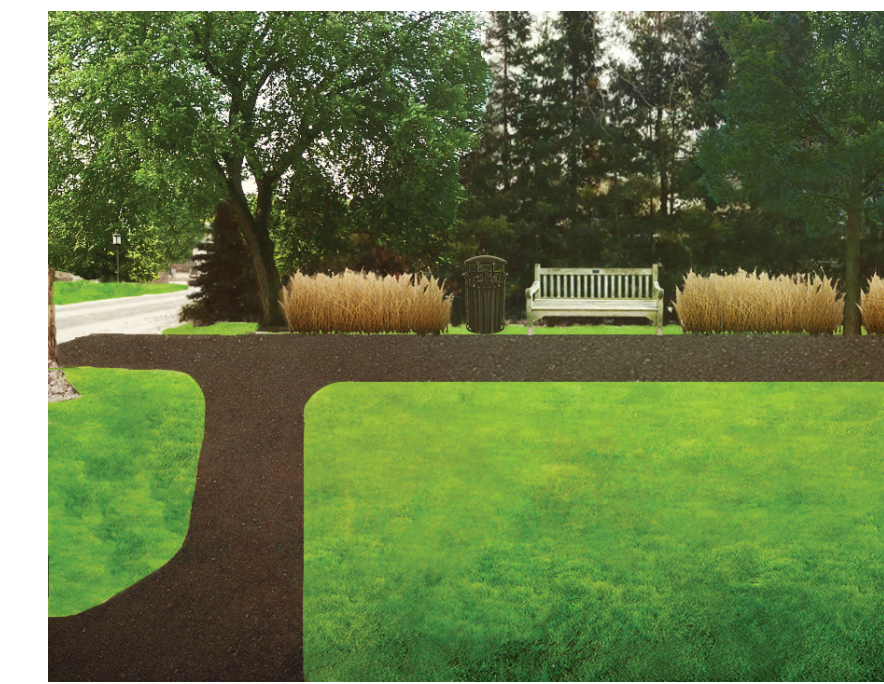
ecological functions

placemaking functions

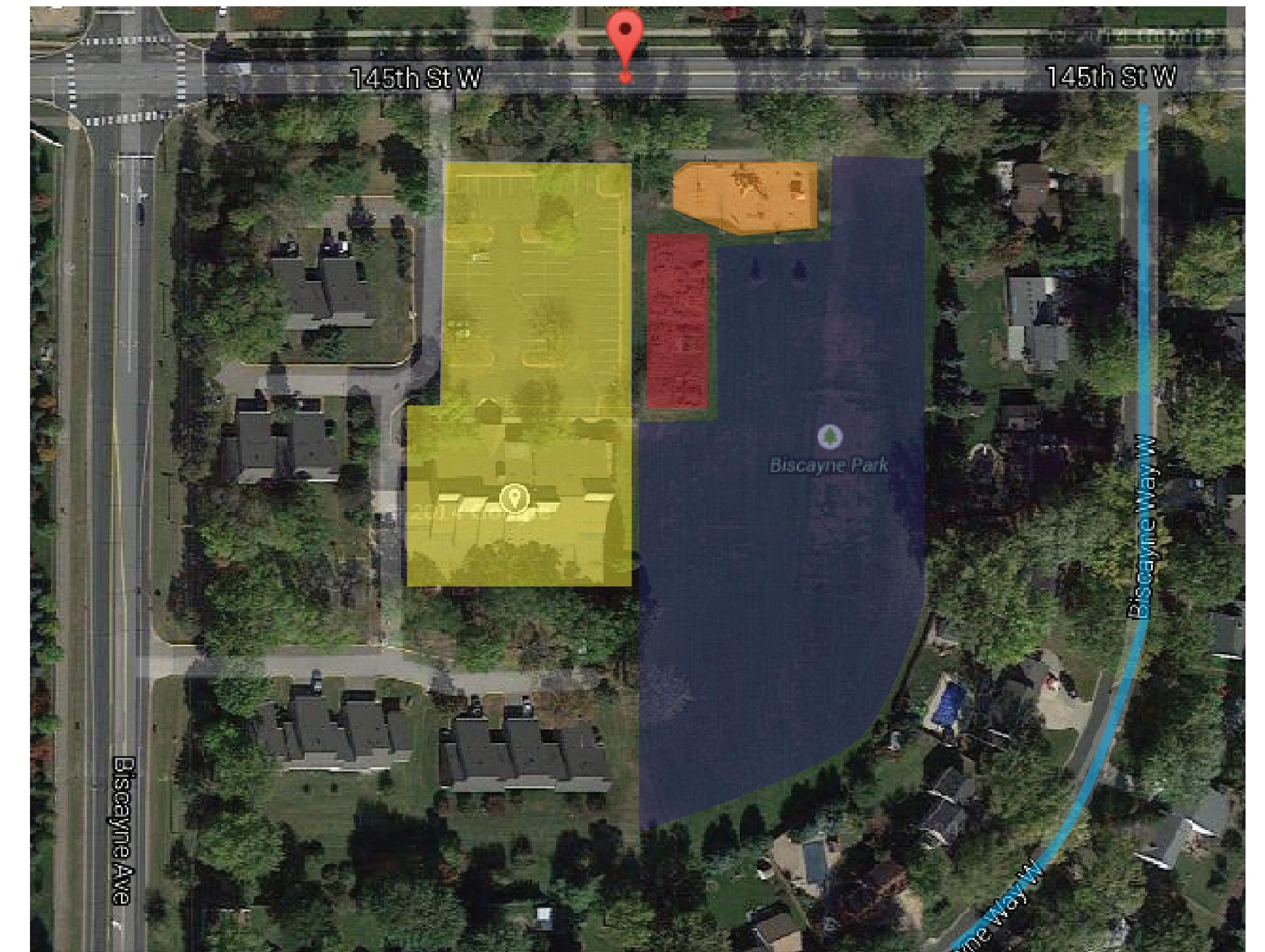
community gathering enhancements

access and linkage

lighting and safety



Existing Assets and Features



- Current parking
- Playground equipment
- CAP Agency & parking
- Community garden
- Green space/space available for amenity additions

MOVING FORWARD

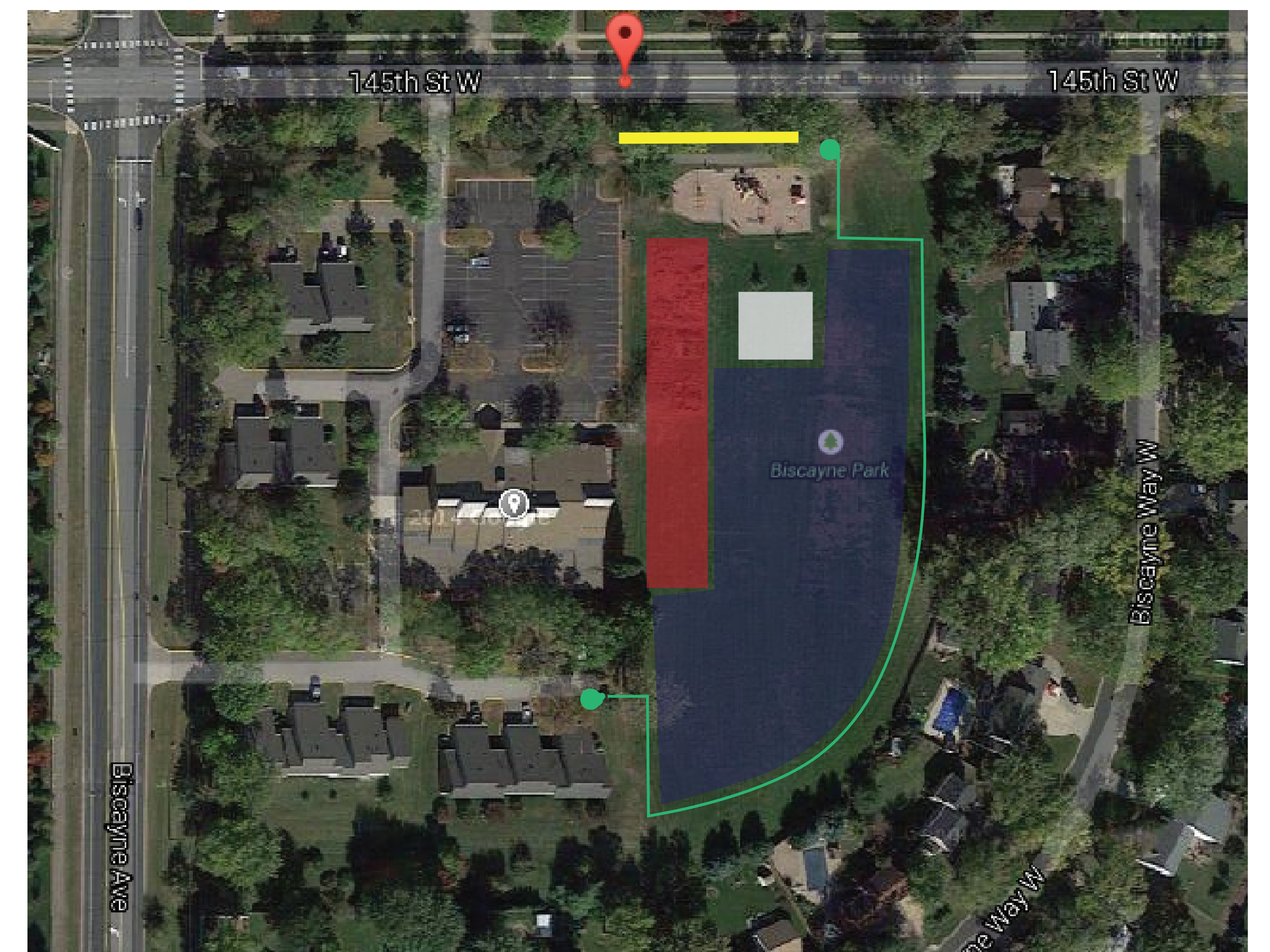
Short-term Plan

- Expand community garden plot**
—to accommodate the increase in demand
- Implement bike trail and replace + add bike racks**
—to promote park's overall bikeability and transform corridor space into a potential destination
- Add trees and native grass species**
—to create a sound barrier, beautify parkscape, increase placemaking function, and improve park's ecological integrity
- Add picnic shelter with 1 grill, 2-4 picnic tables**

Long-term Plan

- Compost**
- Recycling**
- Rain barrels/storm water collection**
- Water fountain**

Recommendations and Opportunities



- Replacement/addition of bike racks
- Community garden + compost
- Picnic shelter + grill, tables, and storm water collection
- Green space/space available for future additions
- Connecting points to existing paths
- Lighted bituminous bike/leisure trail + park benches and vegetation

SWOT CONCLUSIONS

ACCESSABILITY
=
INCREASED
VITALITY



Biscayne Park needs:

- Infrastructure
- Shaded areas
- Recreation
- Connectivity

Photo Credits:
1. Biscayne Park Sign. Rosemount, City of Rosemount. Photograph. Accessed 04/19/15.
2. Paurus, Alexandra. "Garden Plot Site." 2015.
3. Paurus, Alexandra. "Biscayne Amenities." 2015.
4. Paurus, Alexandra. "Biscayne Summer Path Render." 2015.

Aerial Images:
Google Maps. © Google, 2015.

Credits:
This project was completed as part of URB 3751: Urban Environment, a stimulating course taught by Paula Pentel at the University of Minnesota, with support from the Resilient Communities Project (RCP). RCP is an initiative of the Sustainability Faculty Network at the University of Minnesota, with funding and administrative support by the Center for Urban and Regional Affairs (CURA) and the Institute on the Environment (IonE). For more information, visit rcp.umn.edu.