

Akron Flats

Opening the door to Rosemount living



Project Brief

- This is a proposed multifamily apartment building targeted toward young professionals, families, and students attending DCTC who are looking to live and work in Rosemount.
- This development expands the City of Rosemount's affordable housing options.

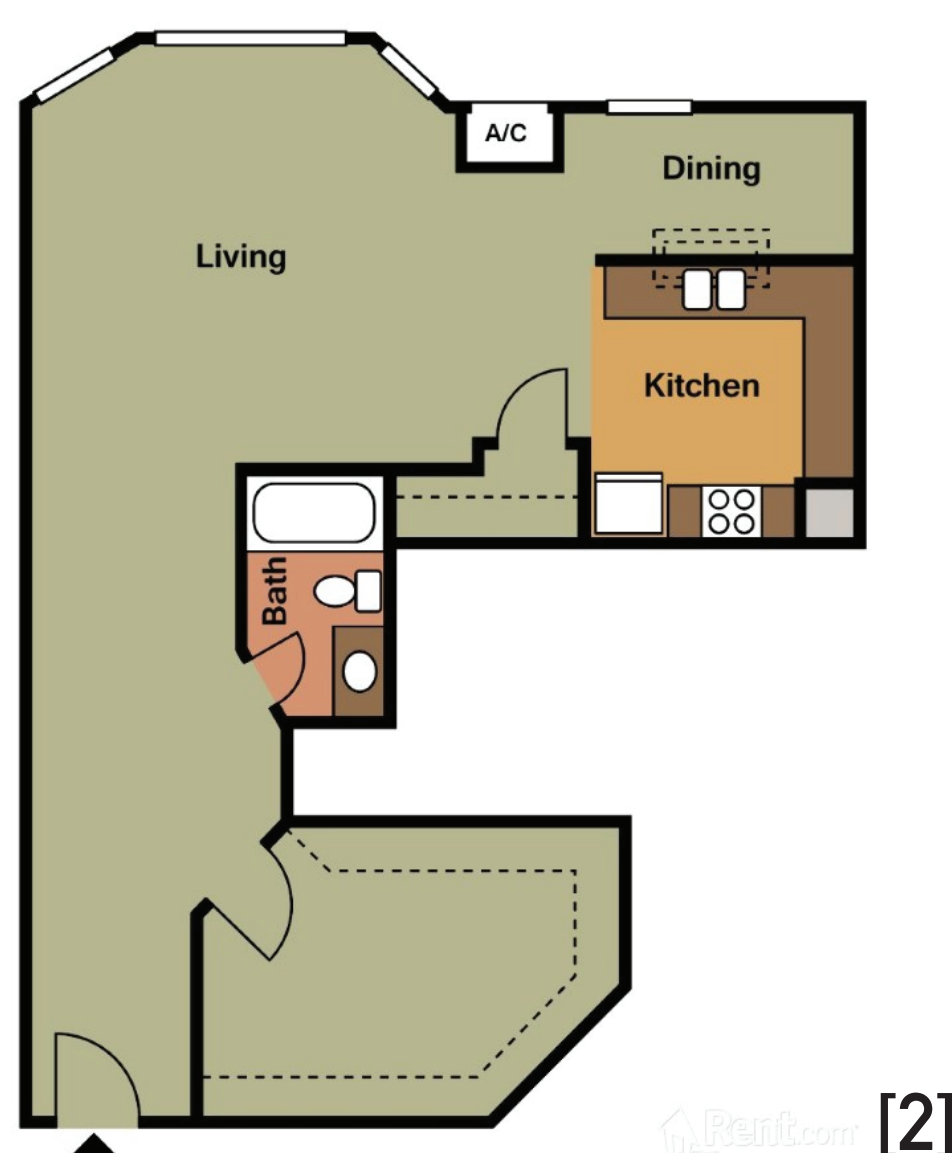
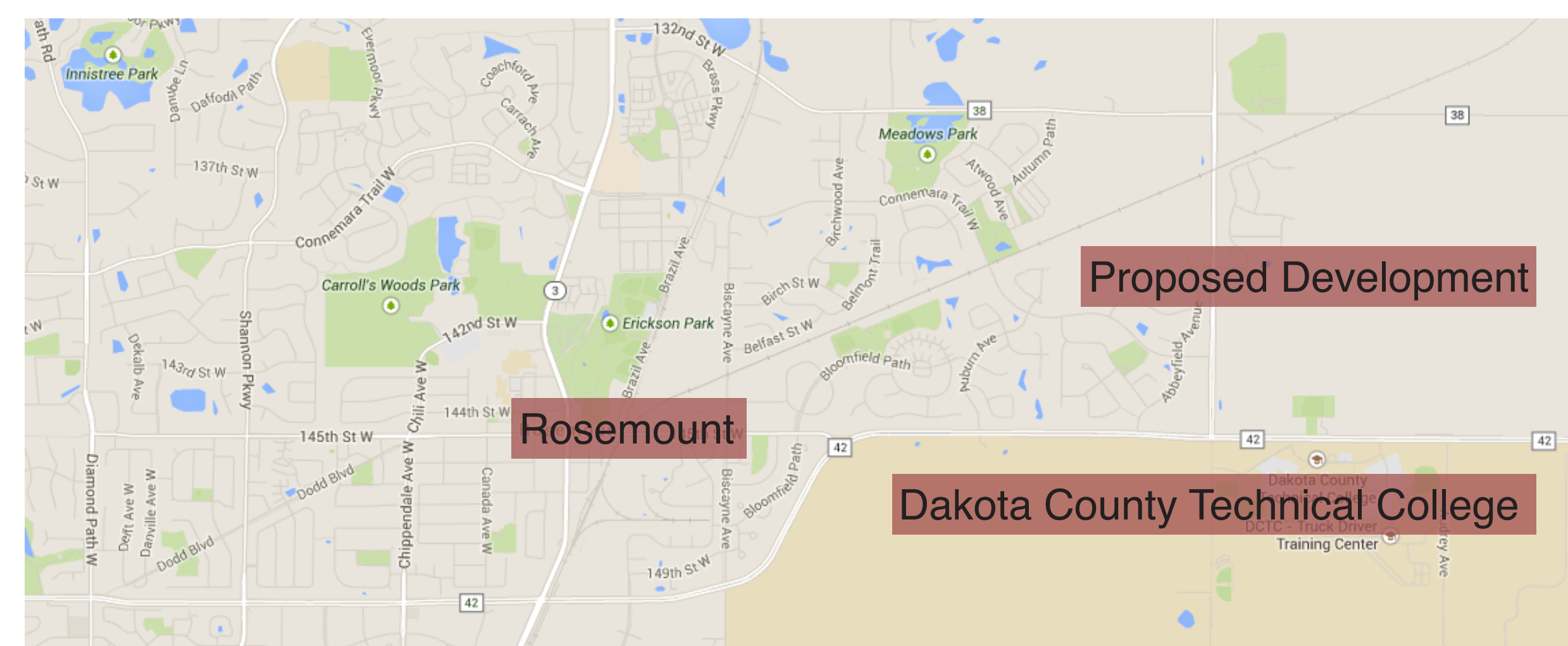
Building Information

- It will be three stories tall with a mix of brick and clad siding. It will also feature a pitched roof system, allowing it to blend in with existing single-family homes in the neighborhood.
- The development will provide a variety of units that will appeal to a wide variety of potential residents, ranging from college students to young professionals and families
- This new building will use Low-Income Housing Tax Credits, tax increment financing (TIF), and the Dakota County CDA's Housing Opportunities Enhancement (HOPE) Program funding.

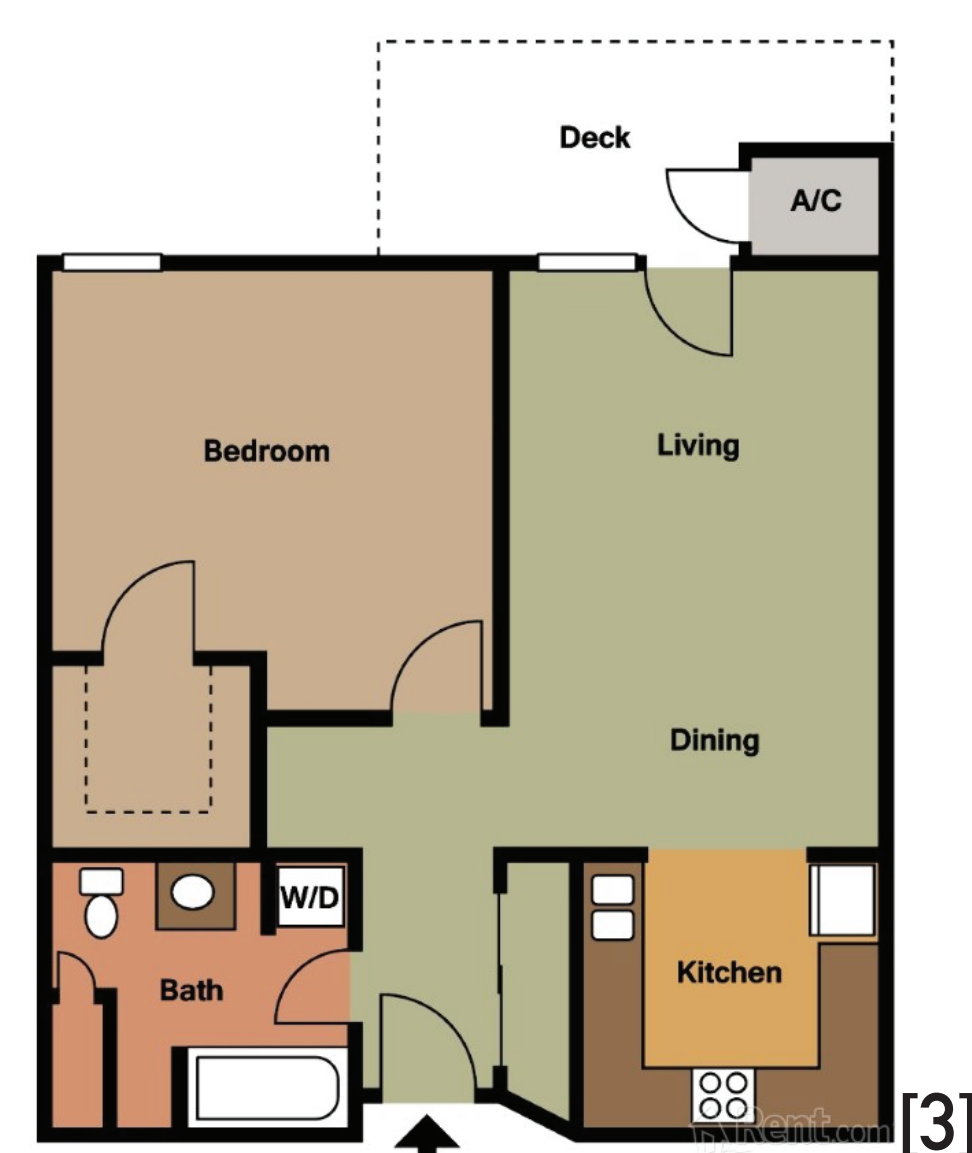


[1]

Site Map



[2]



[3]



[4]



[5]

Building Amenities

- Solar panels and passive solar heating design features
- In-unit high-efficiency washers and dryers
- Common areas on each floor, with smaller study spaces
- Business center that has access to printers and Internet
- Pedestrian connections to local trail systems and DCTC
- Pet friendly
- Playground
- Underground parking



Resources

- [1] <https://pp.walk.sc/full/p/112631648/17cdaf.jpg>
- [2] <http://image.rent.com/img/7a2bd7bc22a83880f10754dd3fac4ccf/650->
- [3] <http://image.rent.com/img/df7b78dac76f03e87e225dab4996ed1a/650->
- [4] <http://image.rent.com/img/a301751966de328b7af57b0c552fe52c/650->
- [5] <http://image.rent.com/img/9a9bc88fd0ac79714ff9dba3d26fc857/650-a>

Credits

This project was completed as part of HSG 4461: Housing Development and Management, a course at the University of Minnesota taught by Professors Becky Yust and Lyn Bruin, with support from the Resilient Communities Project (RCP). RCP is an initiative of the Sustainability Faculty Network at the University of Minnesota, with funding and administrative support provided by the Center for Urban and Regional Affairs (CURA) and the Institute on the Environment (IonE). To learn more, visit rcp.umn.edu.

Instructors

Becky Yust, Ph.D.
Marilyn Bruin, Ph.D.

Project Team

Francisco Tenorio
David Eide