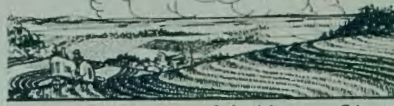


University Farm News  
University of Minnesota  
University Farm  
St. Paul 1 Minnesota

March 22 1951

# Our LAND



Appearing in newspapers of the Minnesota Editorial Association through the cooperation of the U.S. Soil Conservation service and conservation authorities at University Farm.

Prepared and distributed  
by the Minnesota Agricultural  
Extension Service.

For use during the week  
of April 8 1951

A sky-line warning is responsible for contour strip cropping and other conservation measures on Joe Ebnet's farm in the Stearns Soil Conservation District, reports Charles Kinsey, veteran's agricultural instructor at St. Cloud Technical high school. From his buildings, Ebnet can see a silo top a mile away just over the brow of a hill. Although the silo has been there many years, it was not visible when his father operated the farm. Ebnet figures hill top has been eroded.

\* \* \* \* \*

If you are lucky enough to have a supply of nitrogen fertilizer on hand this spring, it might be well to divert some of it from use on corn or other crops to such crops as brome, says Harold Jones, extension soils specialist. Brome fields used for seed production should be a pure stand, free from noxious weeds.

\* \* \* \* \*

For several years people in Root River Valley have been demanding action toward flood control. Fillmore County American Legion has adopted flood control as a community project. Legion will help get needed soil and water conservation applied on the farms--the first step in flood control--working with local soil conservation districts.

\* \* \* \* \*

E. R. Duncan, extension soils specialist, suggests applying nitrogen fertilizer as early as possible to grass stands. One hundred pounds per acre of ammonium nitrate may be enough on pasture, but for brome grass seed production 200 pounds per acre should be a minimum.

\* \* \* \* \*

-RR-