

MN 2000 7+1M-222

4-H M-222 1983

UNIVERSITY OF MINNESOTA  
DOCUMENTS

MINNESOTA 4-H

MAY 19 1983  
ST. PAUL CAMPUS  
LIBRARY

# RABBIT

PATTERN



This archival publication may not reflect current scientific knowledge or recommendations.  
Current information available from University of Minnesota Extension: <http://www.extension.umn.edu>

# RABBIT

## MINNESOTA 4-H RABBIT PATTERN

Authors: Thomas D. Zurcher, University of Minnesota, Extension Specialist, 4-H Youth Development  
Mary Jean Craig, University of Idaho, Extension 4-H Agent  
Margaret Lonquist, Community Program Associate, 4-H Youth Development

Special thanks to the Minnesota Rabbit Breeders' Association for providing funding to assist in the development of this pattern.

### ADVANTAGES OF THE MODEL RABBIT:

The model rabbit made from this pattern provides an excellent training aid for use by 4-H project leaders, extension educators, vocational instructors, and classroom teachers. 4-H members also enjoy using the model when giving demonstrations at club meetings and fairs. The use of velcroed tails and legs, plus realistic teeth, ear canker, interchangeable sex organs, and application as a puppet contribute to its versatility.

When a person who is new to the rabbit industry is first learning management skills, the model rabbit offers a practical way to more fully control the learning environment while still providing enough realism to contribute to the learning outcome desired. Often injury to both animal and individual can be avoided by first practicing on the model before using the live animal.

Some of the management practices which 4-H members have demonstrated using models made from this pattern include the following:

- Identifying Breeds
- Identifying Parts
- Determining Finish
- Judging Conformation
- Identifying Types of Fur

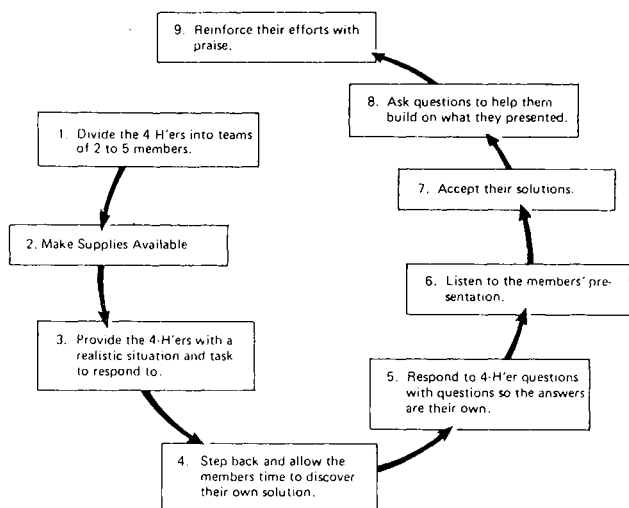
- Recognizing Breed Standards
- Determining Pregnancy
- Recognizing the Normal Rabbit
- Determining Sex
- Identifying Rabbit Disqualifications
- Handling
- Trimming Nails
- Fitting
- Showing
- Tattooing

The model is also an effective training aid to help 4-H'ers not only to develop project skills but also to develop their life skills. When safety and injury are not overriding factors to the learning outcomes desired, both leaders and members can concentrate on learning by doing processes which enhance the following life skills:

- Working Together
- Questioning
- Expressing Themselves
- Discovering the Excitement of Learning
- Relating To Others
- Facilitating a Group Effort
- Using Knowledge
- Risk Taking
- Problem Solving
- Making Decisions
- Developing Leadership Skills
- Defending Decisions

## IDEAS FOR USING THE MODEL FOR TEACHING

The 4-H Program is built on the principle of allowing the members to learn by doing before being told or shown how. This experiential approach allows the members to maximize the opportunity to develop the important life skills previously mentioned which contribute to a healthy self-esteem. The approach also helps the members think about what they are doing and personally identify with the activity rather than being a passive observer. One example of a process successfully used to involve the members in this type of activity is outlined below:



In this model the learners are given an opportunity to discover their own solutions. Questions and discussion help them broaden and clarify their understanding. At no time does the teacher or group facilitator impose his/her answers directly on the group or as some would say, "steal the ball from the learners."

Providing realistic situations and tasks is very important to help the learner assume ownership of the activity and begin to move toward the learning outcome desired.

The situation and task statements need only be one or two sentences. An example to use when the topic is "Determining the Sex of Rabbits" might be as follows:

**Situation:** *A buyer is interested in purchasing one of the does in a recently weaned litter.*

**Your Task:** *Demonstrate how you will determine which are does and which are bucks.*

By giving the teams of 2 or 3 the situation and task to solve, the facilitator has moved from an up-front teacher, who expects everyone to do as he/she tells or shows them, to someone who gives support as needed in the form of questions and encouragement. Although training aids are certainly not essential, the more realistic the environment is the more successful the learning experience becomes.

## CONDUCTING A RABBIT SKILLATHON

One activity which makes extensive use of the experiential learning approach and the model rabbit is popularly called a 4-H skillathon. This has been popular at club meetings, workshops, and fairs. A skillathon is nothing more than a series of learning situations at which teams are given a situation and task plus any necessary equipment and training aids. A facilitator at the station allows the team to solve the task the best way they know how and then follows up with questions. Usually a team has ten to fifteen minutes at a station before moving to the next one. Once again the value of the model rabbit is evident. Even after 15-20 teams have handled a model rabbit at a showing station, it is still ready for the next round.



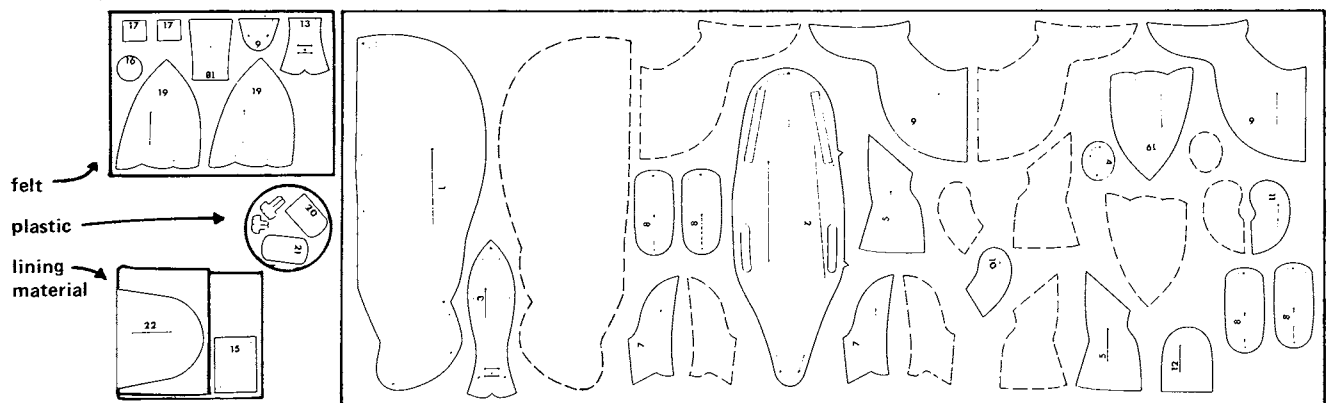
## 4-H RABBIT PATTERN

### Materials Needed:

- 5/8 yard fake fur (two rabbits or one rabbit and one puppet may be made out of 7/8 yard)
- 20 inch piece of Velcro - color to match fake fur
- one red Velcro for ear canker or one medium size snap and scrap of red felt
- thread - match to fake fur
- pink embroidery thread
- nylon fishing line (14-17 lb. weight) for whiskers
- two shank buttons or commercially made eyes
- 28 inch heavy duty nylon line (such as used in "weed eaters")
- one 8 inch zipper - color to match fake fur
- 1/2 pound of polyester fiber fill
- lightweight plastic for teeth and backing for sex organs (such as whipped topping carton or disposable plastic plates)
- scrap of fake fur for foreign color
- one square pink felt
- 1/4 yard firmly woven fabric for lining and pouch (such as broadcloth or percale). Match color to fur.
- 8 or 9 small marbles or wooden beads
- a dozen corsage pins (optional)

### Cutting Directions

1. Cut mouth facing, facings for sex organs, sex organs, teeth facing, nose facing, and two ears out of pink felt.
2. Cut teeth and backing for sex organs out of plastic.
3. Cut underbody lining, sex organ pocket, and pouch from lining fabric.
4. Cut all other pieces out of fur, making sure fleece lies down in direction of arrows. Stroke the fur to determine the grain. The correct direction will feel smoother.



### Marking Directions

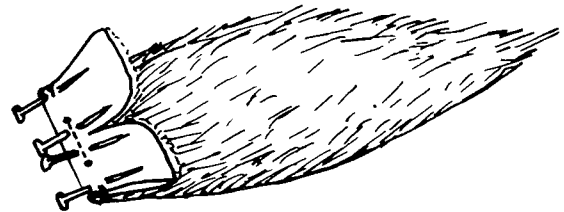
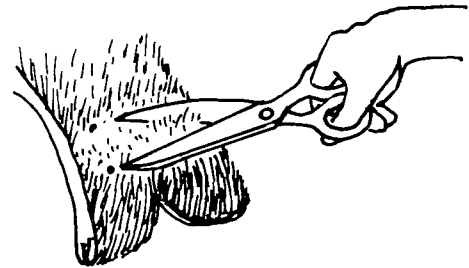
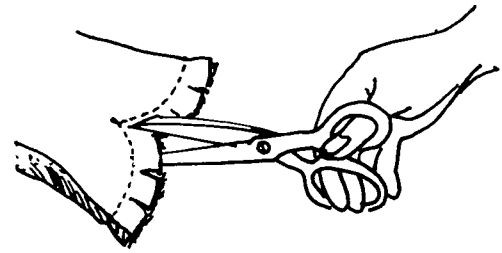
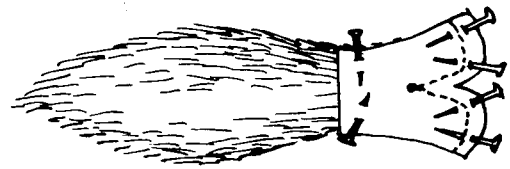
Mark large and small dots with tailor tacks. Mark heavy dark lines on underbody with basting stitch. Mark fold lines on ears. These should be visible on the pile side of the fabric.

## Sewing Instructions

Sew 1/4 inch seam allowances.

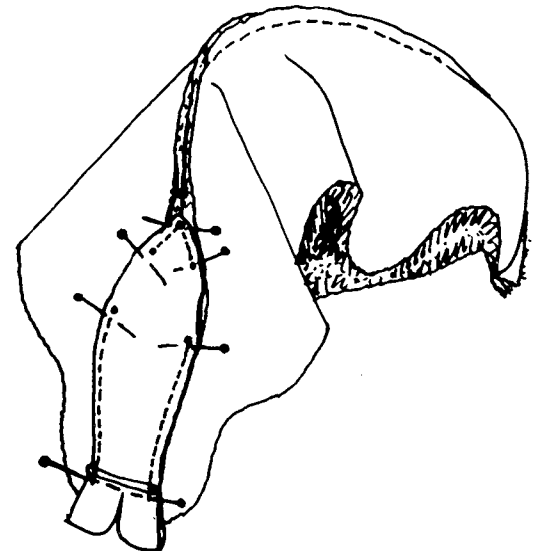
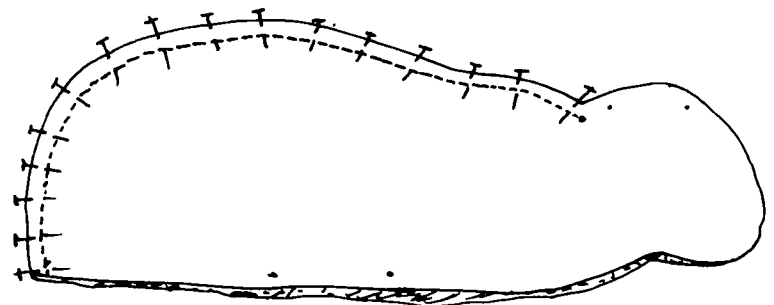
### Step 1: Nose

1. Pin nose facing to nose using top of head pattern piece. Match small dot. Stitch along seam line (A) to small dot, pivot with needle down and complete seam line (A). Slash to small dot. Stitch quarter inch seam allowance. Clip curve. Turn.
2. Trim fur in nose area.
3. Fold (with fur to inside). Match large dots seam line (B). Stitch 1/2 inch long pleat. This forms the nose.
4. Embroider inside of pleat (nose) with pink thread to make it show up more.
5. Baste in 1/8 inch pleat at outer edges to hold nose in place.



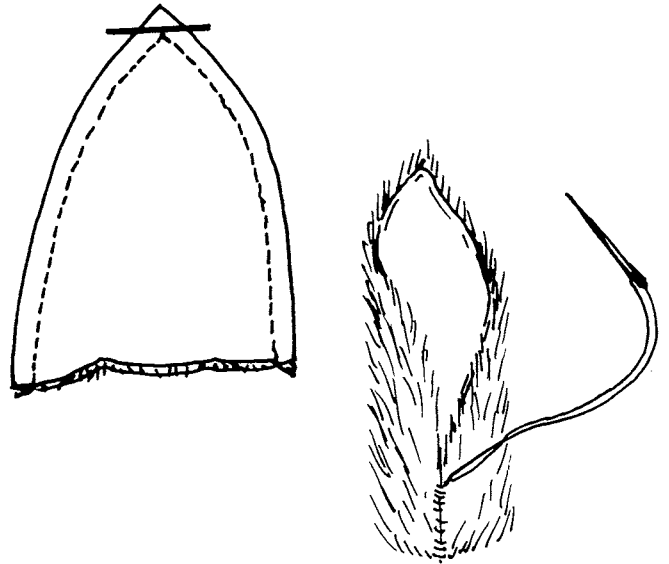
### Step 2: Body and Head

1. Pin center back pieces seam line (C) together, matching large dots. Stitch seam line (C) from back of body to large dot at neck.
2. Pin top of head piece to head. Match large dot to large dot seam (C) at center back seam of neck. Match dot (E) at edge of upper lip to dot (E) on cheek.
3. Stitch seam from dot (E) to center back (leave open between small dots - this opening will be used to set ears). Repeat stitching of other side.



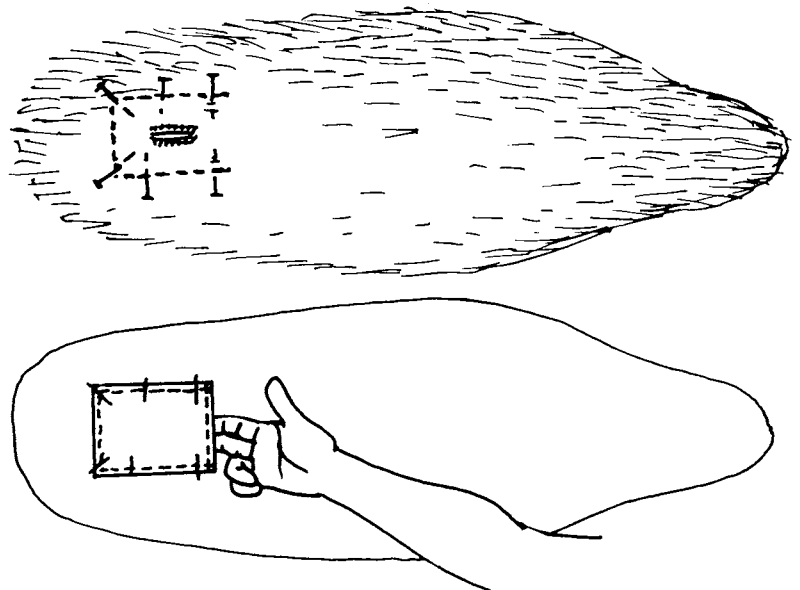
### Step 3: Ears

1. Pin felt ear to fur ear, right sides together. Stitch seam line (D). Clip off point. Turn.
2. Fold edges in on lines. Slip stitch seamed edges together for 1 1/4 inches from bottom edge. This forms the ear canal.
3. Sew red Velcro dot in one ear (alternate materials: use snap covered with red felt or painted with red nail polish). This simulates an ear canker.
4. Place ear in opening at top of head between small dots. Check ear placement. Felt lining should be to the outside. Pin fur ear to head - leave felt lining loose. Stitch firmly by hand.

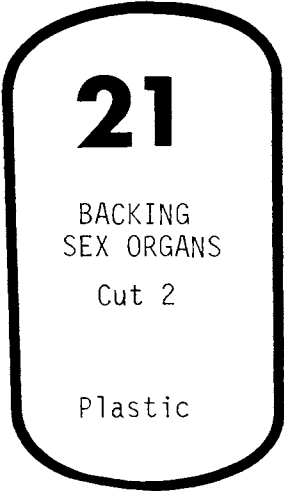
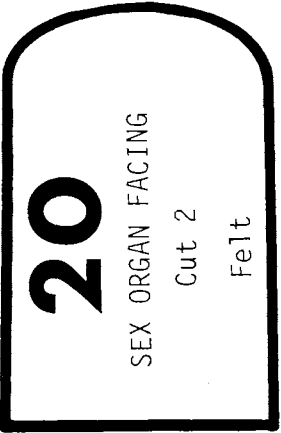
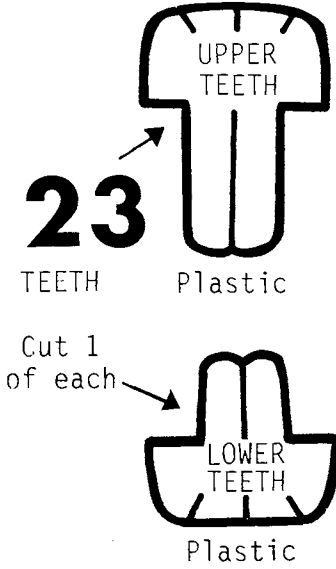


### Step 4: Sex Organs

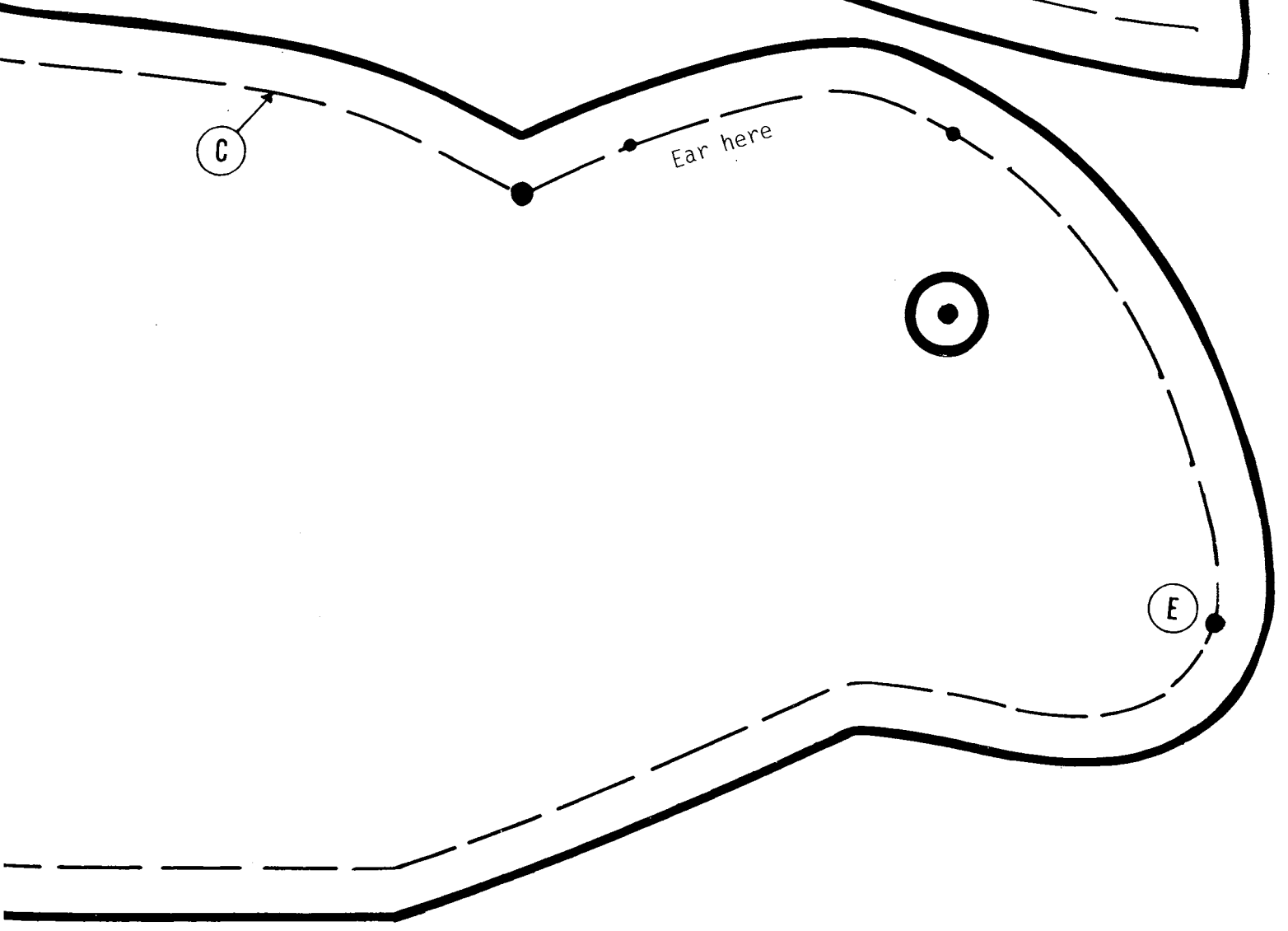
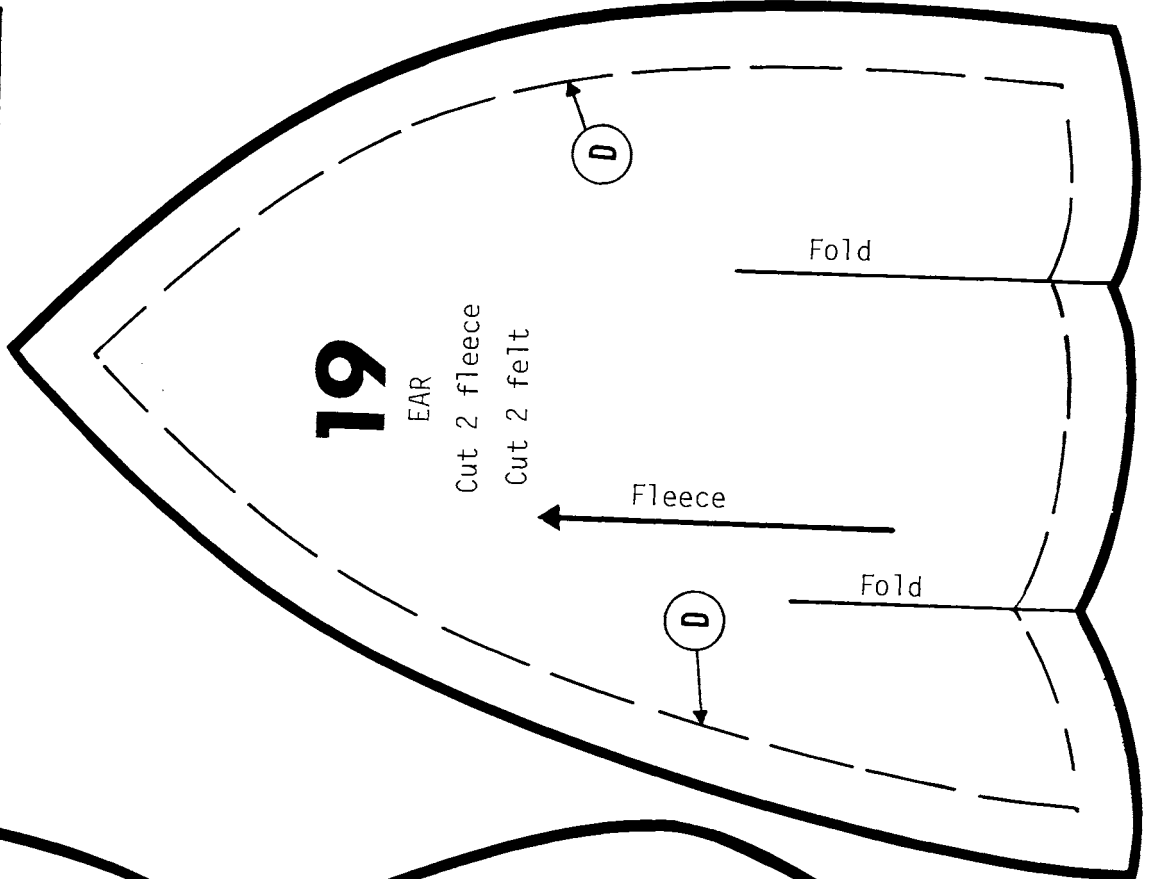
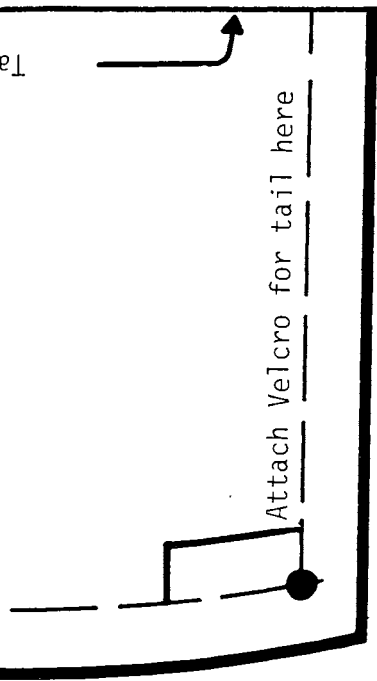
1. Make 1/2 inch buttonhole at marking on underbody pattern piece.
2. Turn 1/4 inch hem on one side of pocket pattern piece.
3. Turn under 1/4 inch on other three sides of pocket pattern piece.
4. Stitch pocket by hand to markings on underbody. Check openings of pocket. It must open to the front of the rabbit.

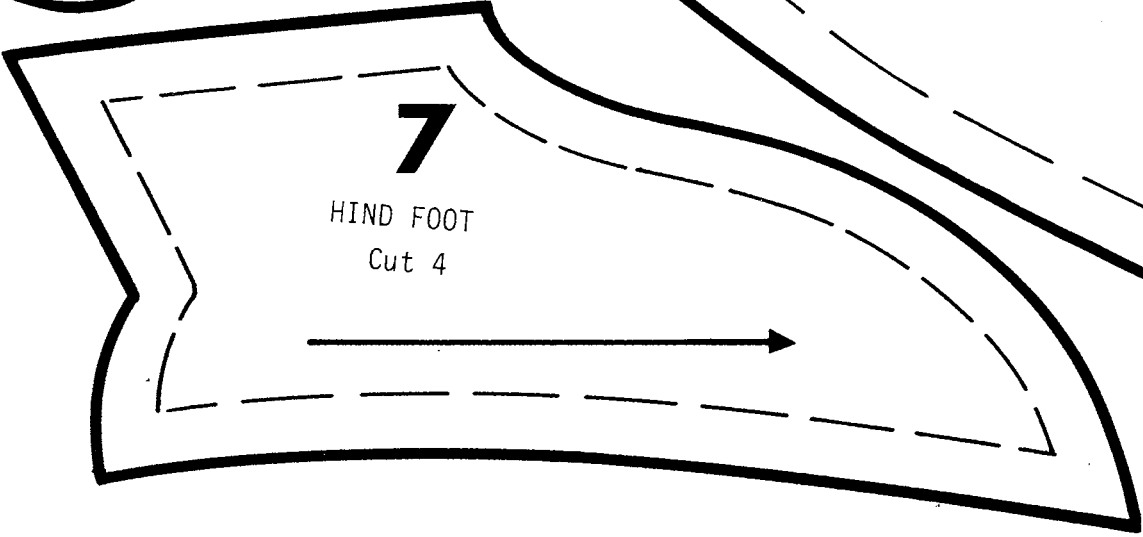
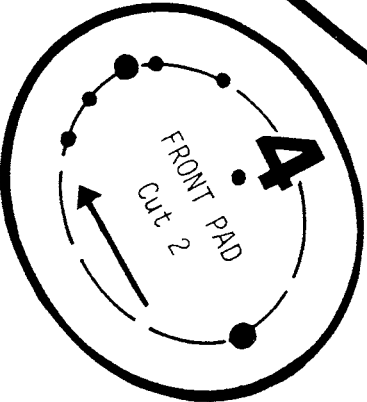
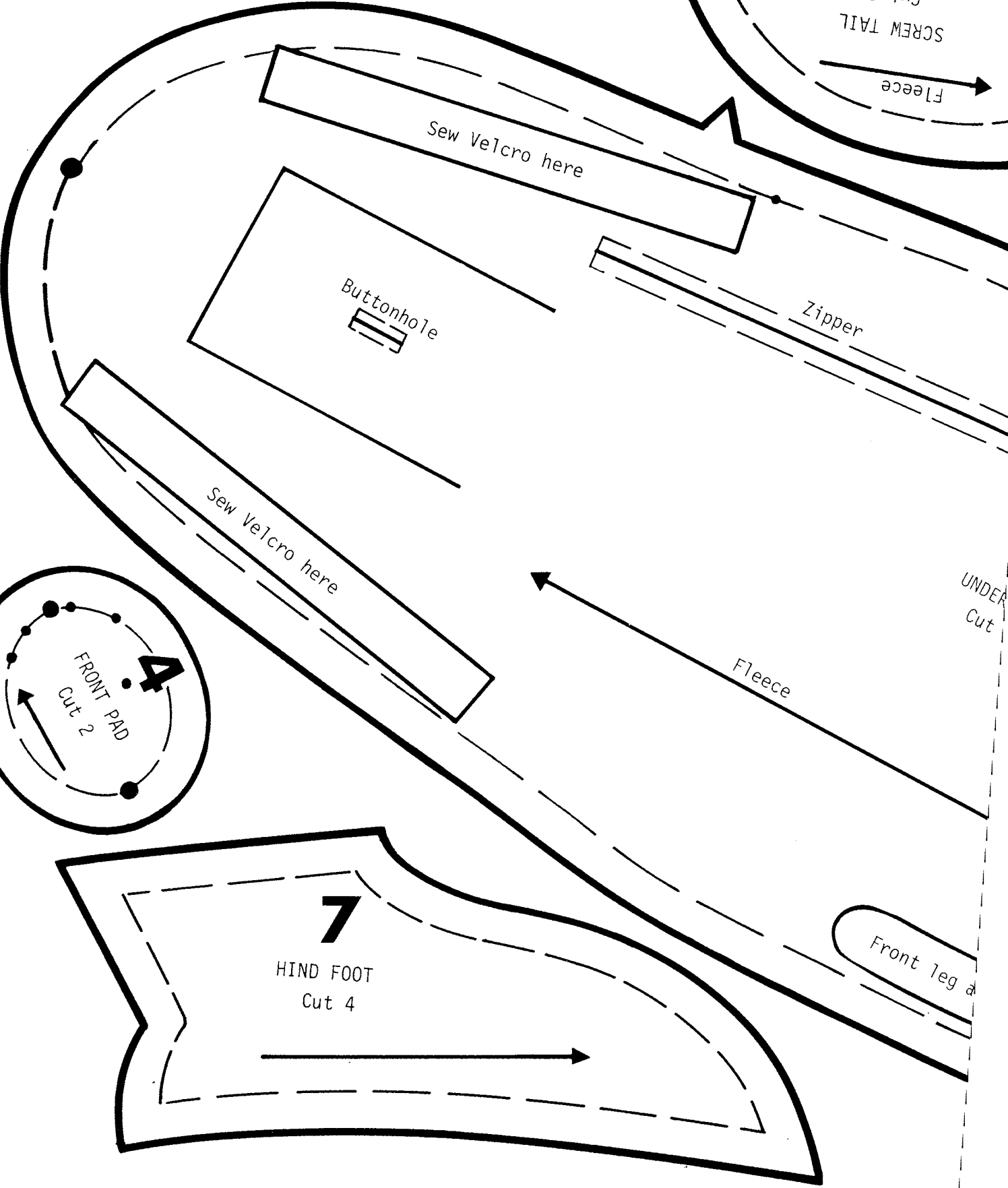
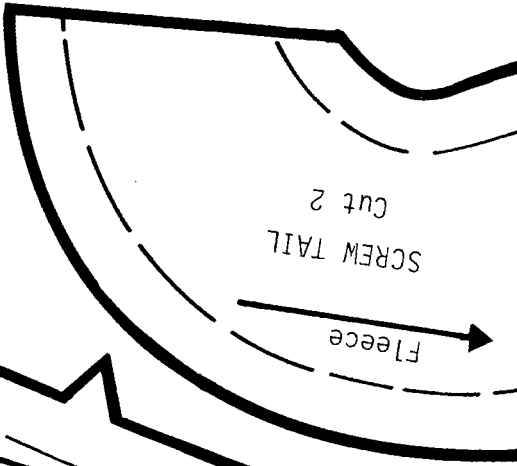


Remove  
pattern  
pages  
from  
book

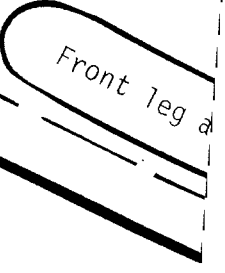


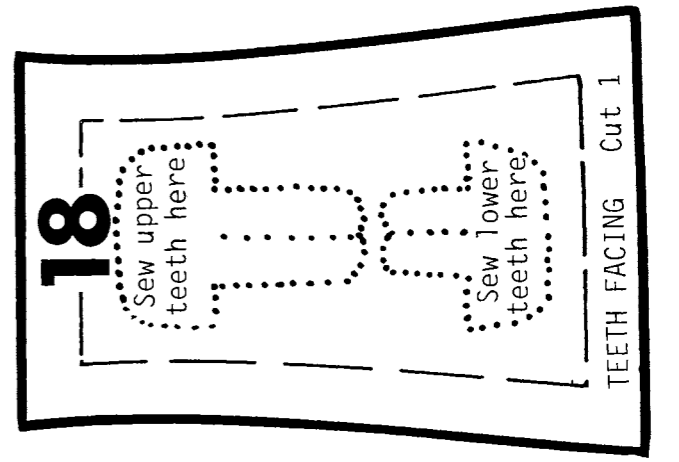
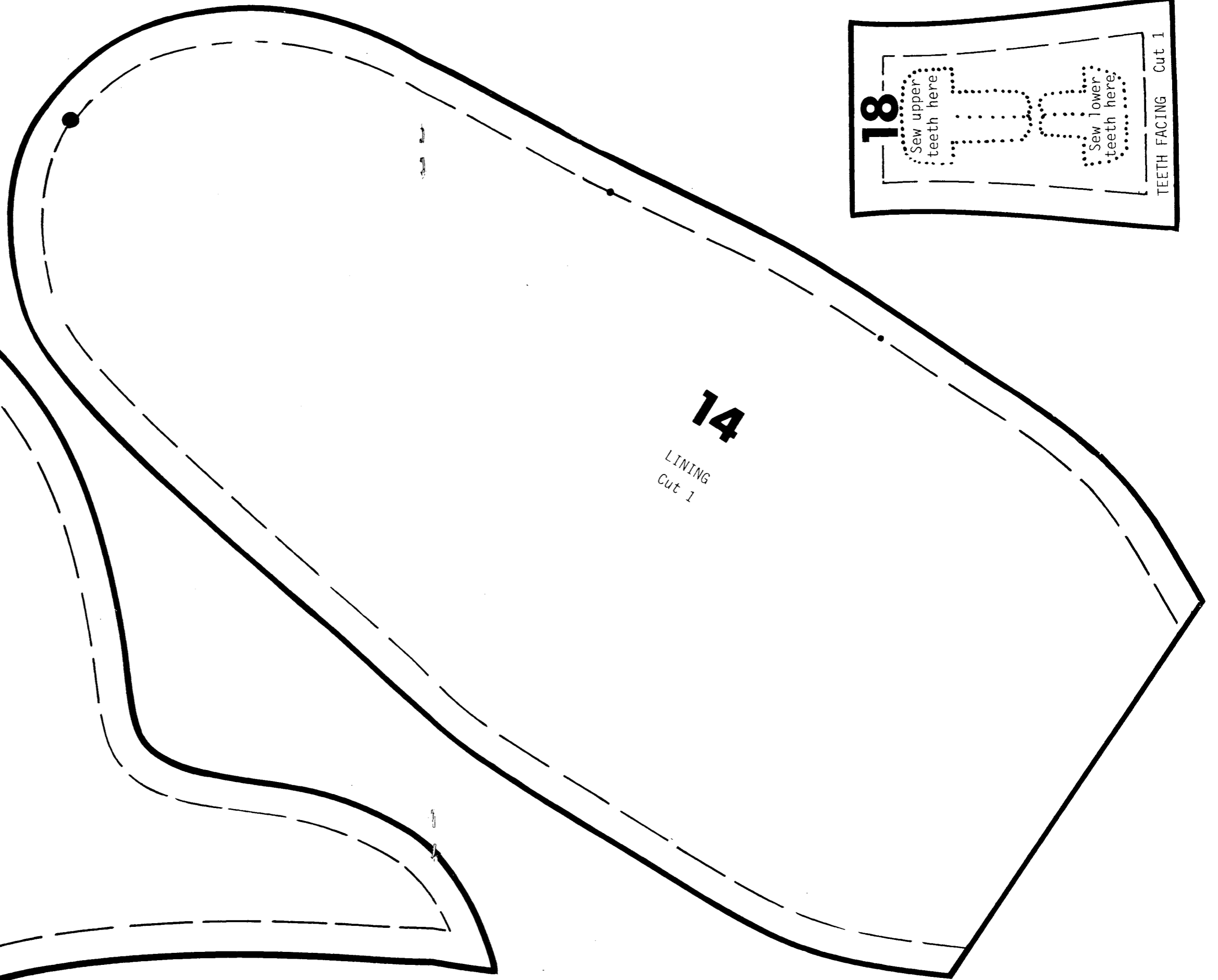
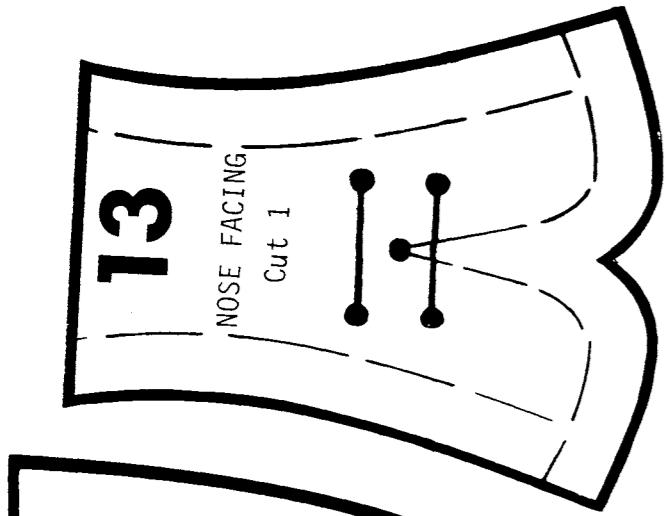


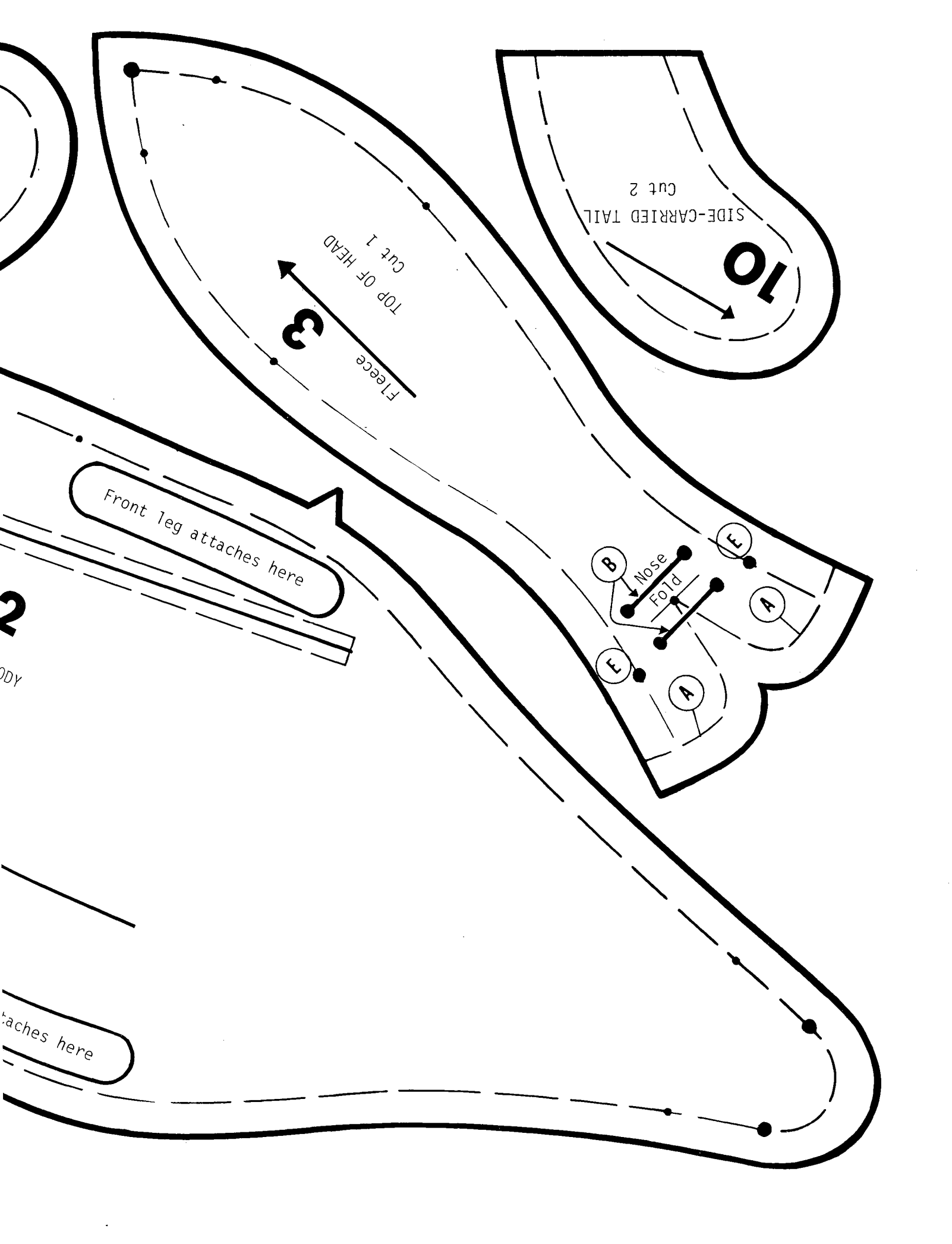




UNDER  
Cut







SIDE-CARRIED TAIL  
Cut 2

10

TOP OF HEAD  
Cut 1  
Fleece

3

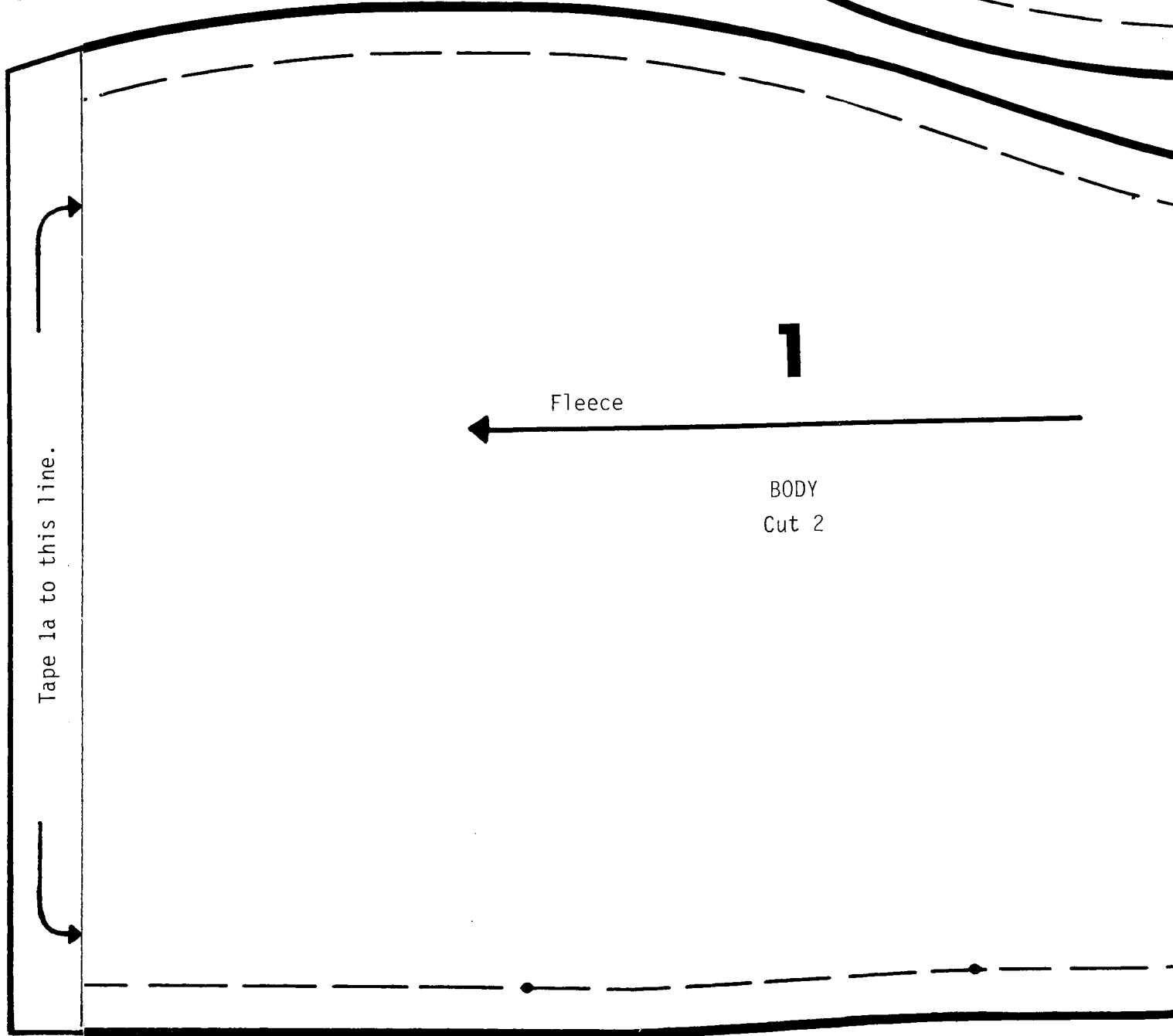
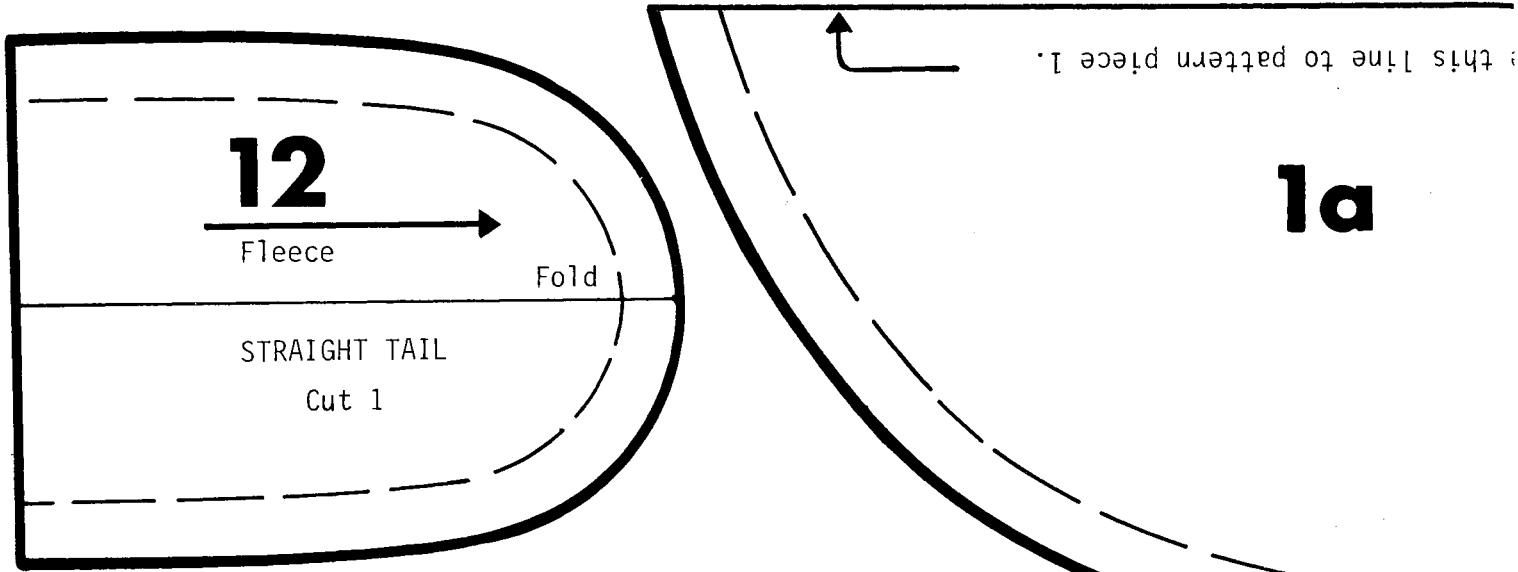
Front leg attaches here

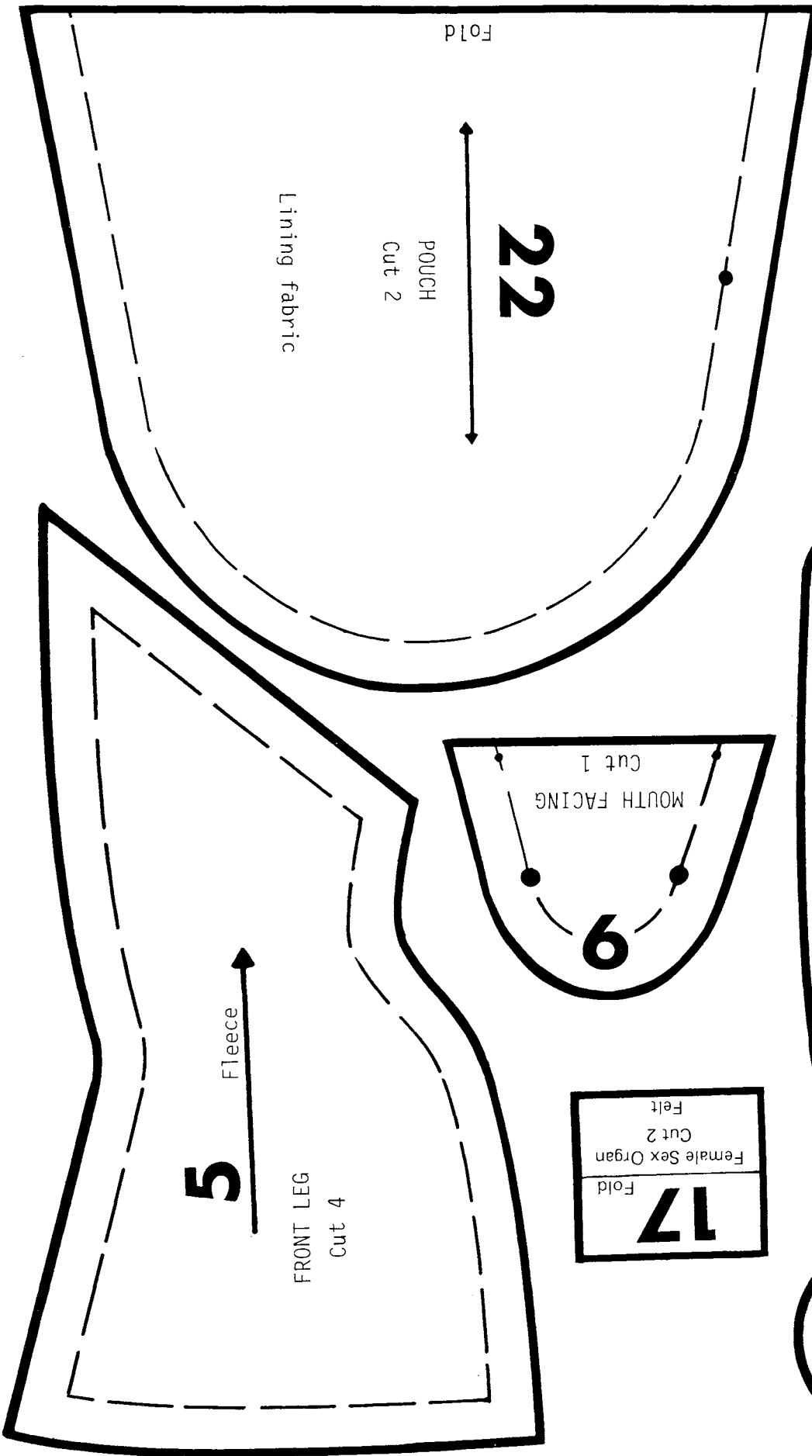
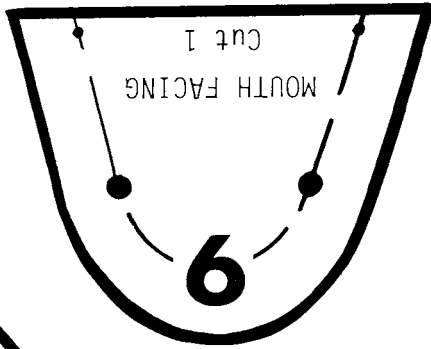
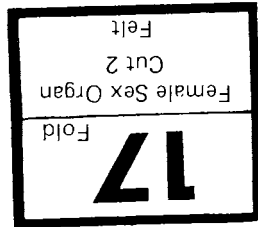
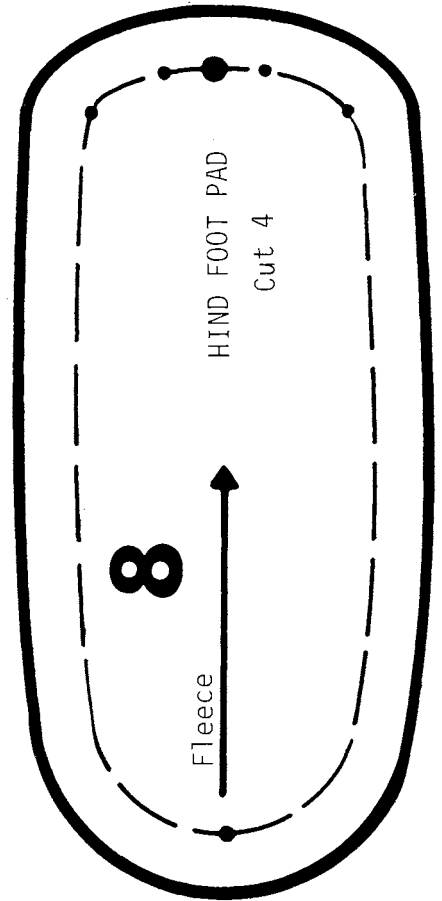
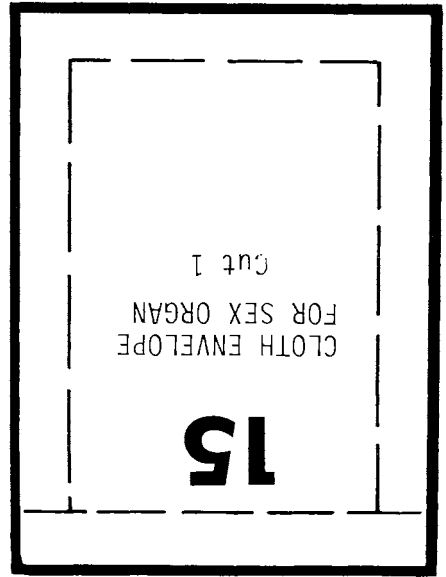
Nose  
Fold  
A  
B  
E

2

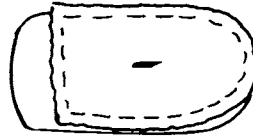
ODY

atches here

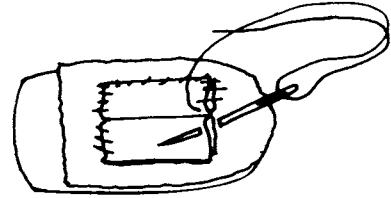




5. Stitch by machine or glue sex organ lining to plastic backing.

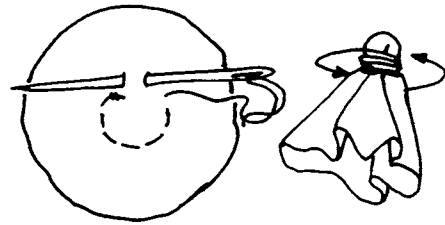


6. Slip completed sex organ into pocket. If necessary, trim. Fit should be snug but not tight.



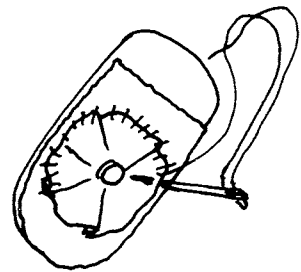
7. Make a small pencil mark on felt side where it shows through the buttonhole.

8. Female organ - fold both pattern pieces in half. Place folded edge on pencil mark. Stitch firmly by hand to lining.



9. Male organ - prepare backing and lining as in #'s 5, 6 and 7.

10. Stitch by hand, gathering markings on male sex organ. Pull stitches to form small tip, wrap end of thread around stitching and secure thread.

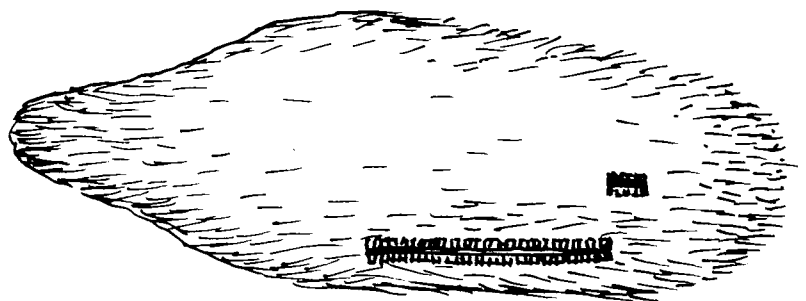


11. Place tip directly over pencil mark on felt lining and by hand, stitch outer edge of circle to backing.

### Step 5: Underbody

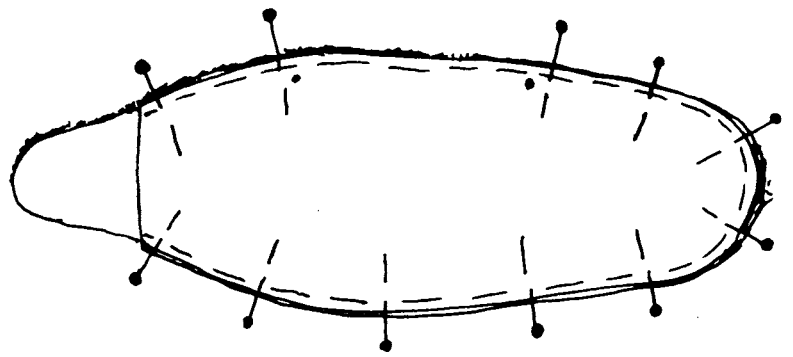
1. Make a 7 inch buttonhole at markings on underbody.

2. Baste zipper directly under buttonhole. Open buttonhole and check position of zipper. It should open and close easily from right side of fur. Machine stitch zipper.



3. Turn 1/4 inch hem on straight end of lining piece.

4. Baste lining to wrong side of fur on underbody pattern piece.

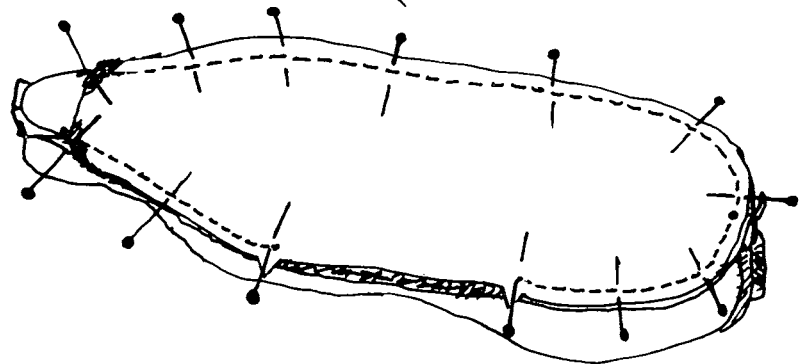
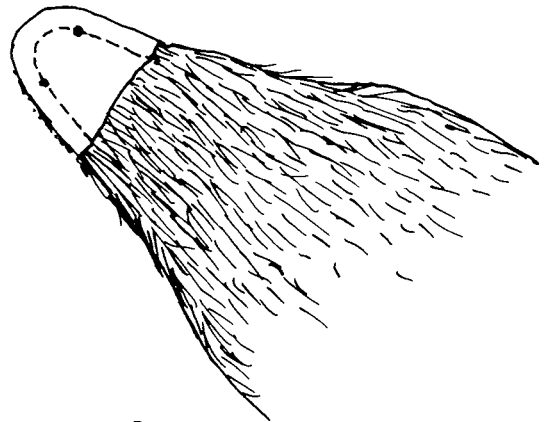


### Step 6: Mouth and Teeth

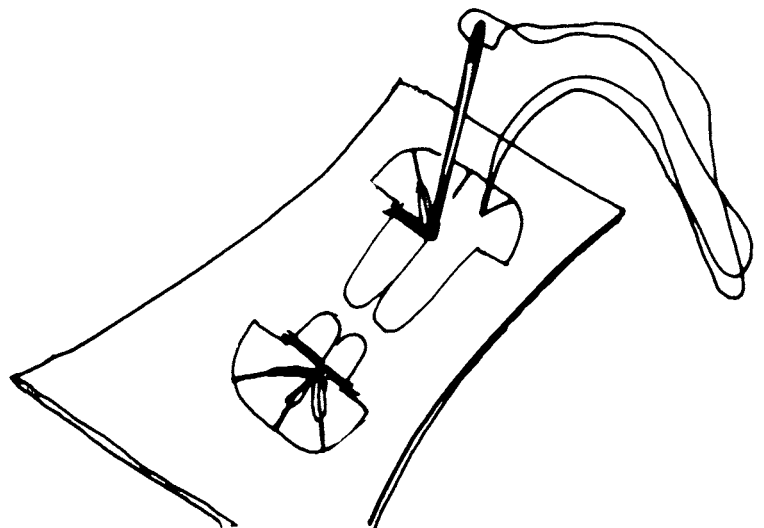
1. Pin mouth facing to right side of underbody, matching large dots. Stitch 1/4 inch seam and turn.

2. Pin underbody and lining to body, matching small dots at mouth and large dots to center back seam at rear.

3. Stitch, leaving open between notches. Turn right side out. Notches are on underside pattern piece only.



4. Teeth: cut out of plastic (such as frozen whipped topping containers). Sew to felt patch, pulling thread into slits to keep teeth from shifting.



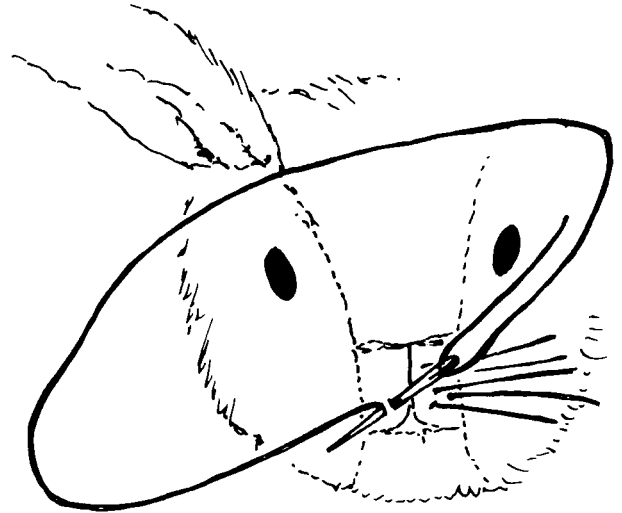




5. Pin patch behind lips so that teeth are in the proper position. Upper teeth will be visible between slash. Lower teeth will be visible on lower lips - 1/4 inch from front seam. Sew patch in place by hand.

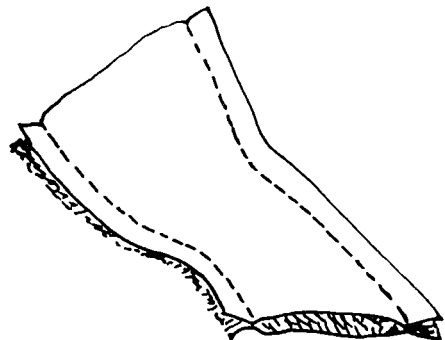
#### Step 7: Face

1. Attach eyes to head.
2. Trim fur around head as desired.
3. Whiskers: Thread large-eyed needle with nylon fish line. Put knot in end. Put needle through lip from the inside out. Make a small stitch to secure the whisker. When sewing whisker on right lip, sew towards right cheek (same for left lip, left cheek). Trim whisker to desired length. Place equal number of whiskers on each side of upper lip. Repeat this process for two eye lashes above each eye.

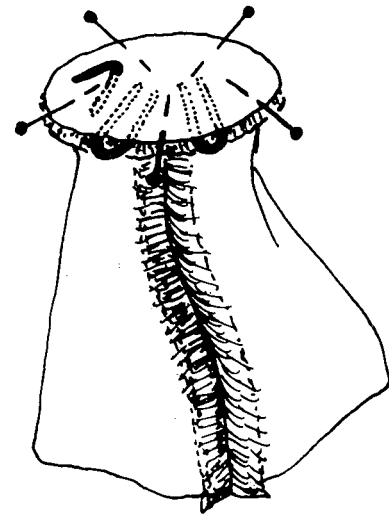


#### Step 8: Front Legs

1. Stitch center front and back seams.
2. Trim fur on foot pad, if desired. Pin foot pad to paw, matching large dots to seam.

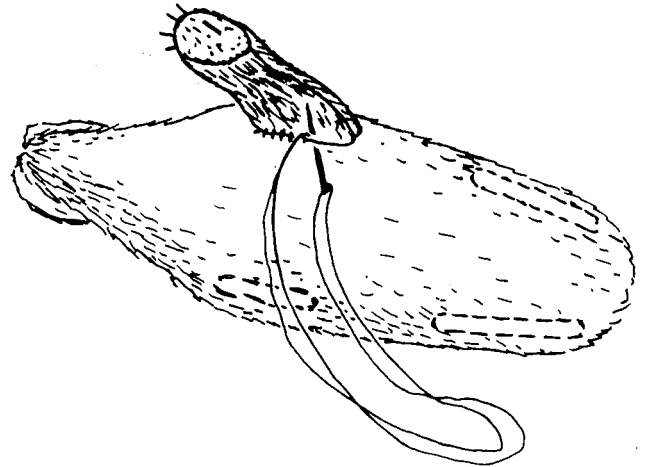


3. Toenails: cut three 2 inch lengths of heavy duty nylon line. Fold two sections into "U" shape, crimping folds with pliers. Insert two pieces in seam line at small dots, so that free ends point to inside and folded end extends beyond seam edge. Toenails will be between the layers of fabric. Fold third piece in "V" shape. Force one end through fabric from the wrong side at small dot in the pad. Point towards front of foot to form dew claw.



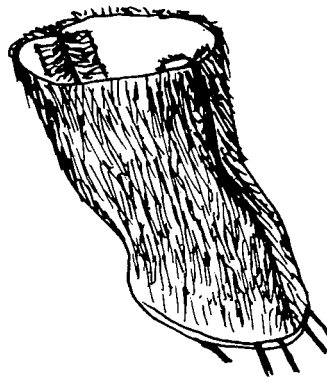
4. Stitch 1/4 inch seam, being careful to stitch over toenails. By hand, catch "U"'s and free end of dew claw to seam to prevent slipping.

5. Clip curves. Turn foot to right side. Clip ends of toenails to desired length. It may be necessary to hand stitch toenails on outside to hold in proper position.



6. Stuff lightly:

7. Pin front legs to body along seam as indicated on pattern. Stitch securely by hand.

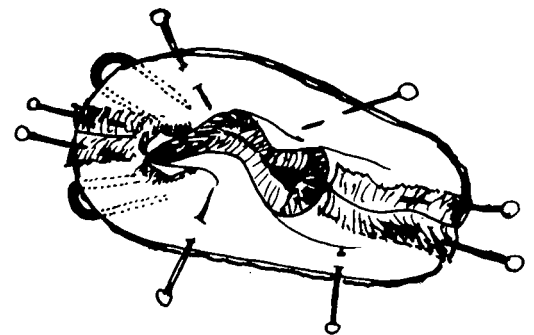
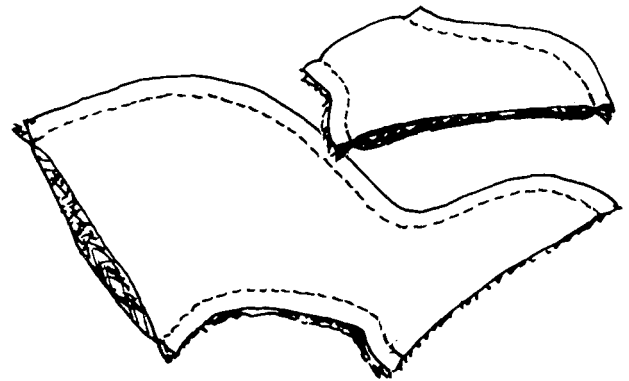


### Step 9: Hind Legs and Hind Feet

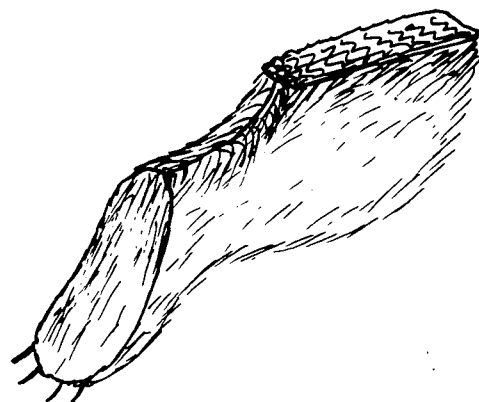
1. Pin and sew as for front legs (Step 8, #'s 1 and 2).

2. Toenails: Follow directions for front legs (Step 8, #3), omitting dew claw.

3. Turn. Stuff lightly.

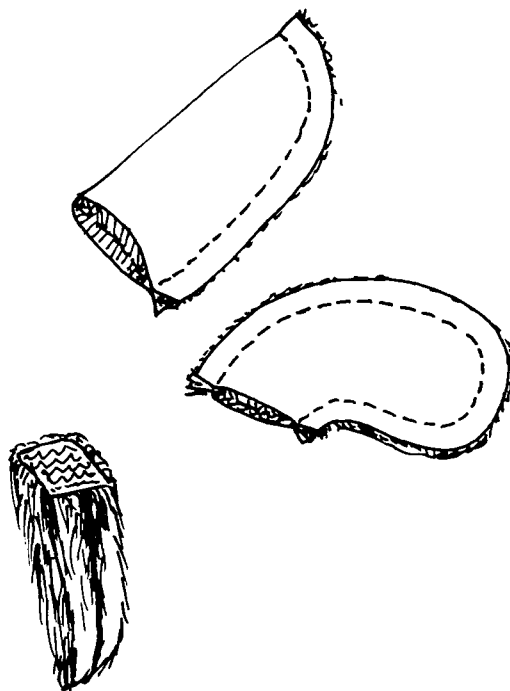


4. A. Sew 4 inch Velcro strip to top of leg and to fur of underbody on seam line as indicated. DO NOT stitch into lining.
- B. Sew 1 1/4 inch strip of Velcro to top of foot, being careful to use opposite side from that on body.
5. A. Attach leg to body when showing legs, sexing, etc.
- B. Attach foot to body when sitting position is desired.



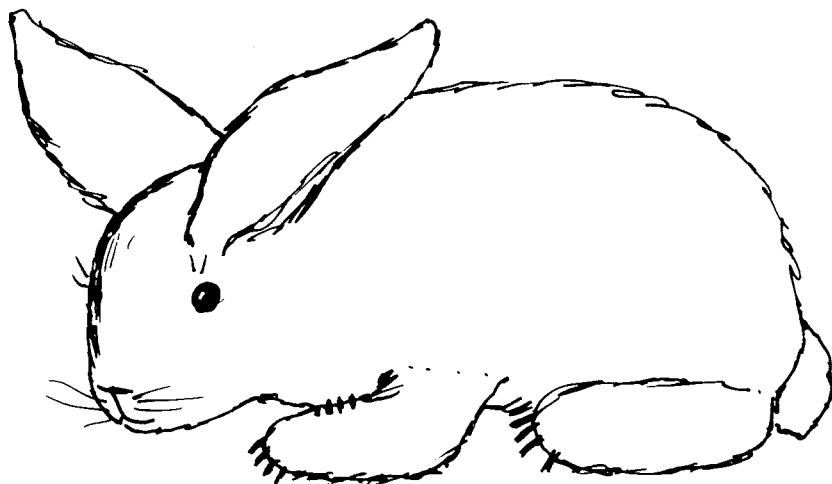
### Step 10: Tail

1. A. Straight Tail: Fold in half and stitch side seams.
- B. Side-carried Tail and Screw Tail: Pin right sides together and stitch side seams.
2. Turn. Stuff lightly.
3. Turn ends under and sew together, keeping seam in center on straight tail.
4. Attach Velcro square to inside of tails at base. Attach corresponding square to body as indicated on pattern.



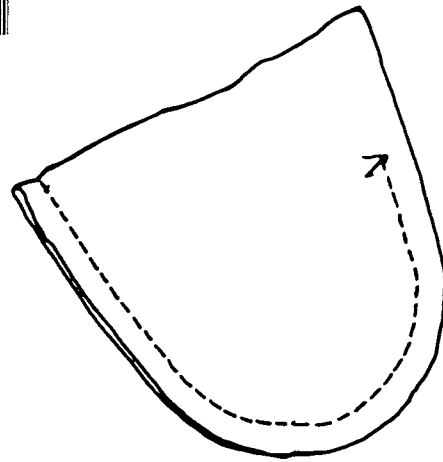
### Step 11

1. Stuff body. Pin opening closed and stitch by hand.
2. Place rabbit in sitting position. Tack front legs to body if the legs slip out of position.
3. Foreign color: Sew small Velcro dots to back of small piece of dark-colored fur fabric. Sew other half of Velcro to body where desired.



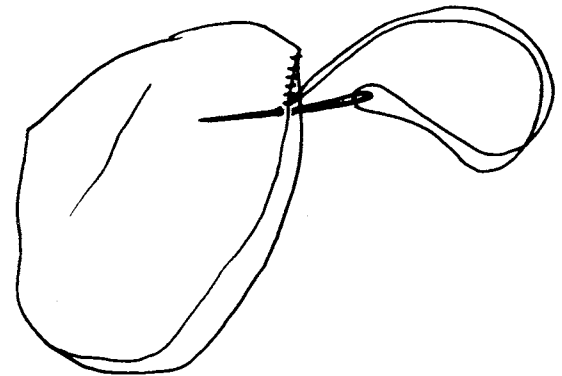
### Step 12: Pouch

1. Stitch seam to dot. Turn right side out.
2. Place a pad of stuffing in pouch.
3. Place marbles in inside of padding. Marbles should have room to move.
4. Stitch pouch closed.
5. Insert pouch in rabbit through the zipper opening for pregnancy simulation.



### Rabbit Puppet

1. Follow directions for rabbit, Steps 1, 2, 3, and 6.
2. Sew straight tail as in Step 10.
3. Stitch underbody to body as in Step 6, #3, except leave seam open around hind end between legs.
4. Pin tail to upper body at center back seam, keeping seam line in tail at center. Stitch.
5. Turn body right side out. Turn raw edges under and stitch hem by hand.
6. Continue to follow directions for rabbit - Steps 6, 7, and 8. Omit steps 4 and 5.
7. Step 9. Make hind feet only. Omit #'s 4 and 5 of Step 9. Sew feet directly to body.



### Additional Patterns

Patterns are also available to make a model lamb, dairy goat, and pig. For information on ordering these patterns, contact: Extension Bulletin Room, 3 Coffey Hall, University of Minnesota, St. Paul, Minnesota 55108.

Illustrator: Dianne Swanson