

UNIVERSITY OF MINNESOTA

The Northwest
Experiment Station

News

Volume 23, NO. 1
Summer 1995

100 Years: 1895-1995

The Northwest Experiment Station is 100 years old this year. Kickoff for the Centennial celebration will begin with the annual **Crops and Soils Field Day** on **Wednesday, July 19**. More information is included on the yellow insert.

James J. Hill, president of the Great Northern railroad company involved in rail construction in the Red River Basin, was a powerful economic and political figure in the late 19th and early 20th century of Minnesota's history. His influence and a conditional gift of 476.61 acres of land was used by the University of Minnesota to establish an experiment farm to learn how to farm the soggy sod and later to teach residents of the Valley what was learned from the experimentation. The initial land donation formed the beginning of the Northwest Experiment Station and consisted of three-fourths of Section 19, Crookston Township less public road easements and railroad right-of-way. In 1905 a School of Agriculture was added and operated in conjunction with the Station until 1968. The Station currently operates 1,556 acres of land with 295 acres in crops research, 1,105 acres in feed production, 86 acres in the natural history area and 70 acres in buildings, roads and windbreaks. There are 7.25 academic and professional faculty, 25 support staff and 29 part time summer staff.

This issue of *The Northwest Experiment Station News* is a pictorial history of scenes from the past. We hope you enjoy it! A new booklet, *Gleanings*, has just been completed. It is a short history of the 100 years of the Station.



Aerial view of the Northwest Experiment Station.



Taken about 1910, this is the north entrance to the campus.

This archival publication may not reflect current scientific knowledge or recommendations.
Current information available from University of Minnesota Extension: <http://www.extension.umn.edu>.



Elevator grader at work on open ditches at the Northwest Experiment Station in 1907. One of the earliest projects by the University.

Looking north in front of Robertson Hall and Kiehle Building - the land definitely needed drainage.



Water control and drainage was one of the major problems on the University campus. Evidently, the faculty thought it was deep enough for fishing!

Northwest Experiment Station Centennial
1895 - 1995

Crops and Soils Field Day

Wednesday, July 19, 1995

Continuous Tours From 7:45 a.m. to 11:15 a.m.

These tours will originate from the Ag Research Center

Tour 1 - Small Grains

- ▶ Spring Wheat
- ▶ Barley
- ▶ Oats

This tour will feature the current recommended varieties as well as the varieties developed by the University of Minnesota over the past 100 years.

Tour 2

A. Weed Management

- ▶ Herbicide Injury Symptoms
- ▶ Herbicide Mode of Action
- ▶ Herbicide Selectivity

B. Entomology

- ▶ New Insecticides for Wheat, Canola & Potatoes

C. Plant Pathology

- ▶ Seed & Foliar Treatments for Scab
- ▶ Fungicide/Variety Interactions in Wheat

Tours at Selected Times Only

These tours will originate from the North Agronomy Farm
(Each Tour at 1:30 p.m. and 2:30 p.m.)

Tour 1 - Sugarbeet Weed Control

- ▶ Herbicide Combinations
- ▶ Herbicide Additives

Tour 2 - Small Grain Weed Control

- ▶ Wild Oats in Wheat & Barley
- ▶ Variety Herbicide Interactions
- ▶ Broadleaf Weed Control in Wheat
- ▶ Foxtail Management in Wheat

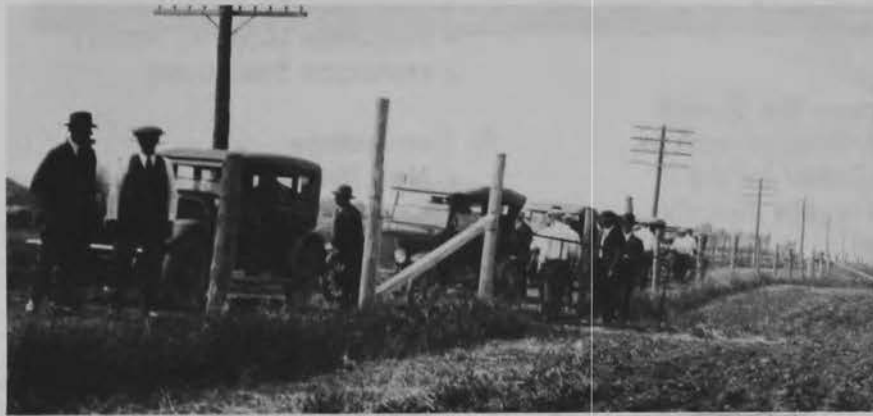
Antique Machinery: Farm machinery dating to the turn of the Century will be on display.

Exhibits & Clinics: Weed, Disease & Insect Clinic; Well Water Testing (bring water samples); Wildlife & Conservation Research; UMC & College of Agricultural, Food & Environmental Sciences Information; Northwest Experiment Station Foundation; and Livestock Barn Tours.

Lunch: Lunch will be available in Brown Dining Room, Conference Center from 11:30 a.m. to 1:30 p.m. Guest speaker will be U of M President, Dr. Nils Hasselmo.



Cutting grain with horse and binder - approximately 1911. Note the grain shocks in foreground.



*Crops and Soils Association
visiting plots on summer tour in
1936.*

*Hay Day - 1953
Demonstration of
haying equipment.*



*Demonstrations on combines.
Crops and Soils Day.*



The addition was put on the west end of the horse barn to serve as storage for buggies and light wagons. Horse barn was built in 1902 and used until 1986.



Farm foreman, Juel Torvi, holding young Percheron stallion, Karnot. Taken about 1929.



Machine shed and elevator were built the same year, 1913. Both buildings have since been replaced.

Original dairy barn built in 1906 and replaced in 1986





Bernie Youngquist, Superintendent
1956 - 1983.



Current Head Larry Smith, and former employees, Jerome Sirek,
Elvin Moran and Gene Miller.



Research staff in the late 1960's - Bruce Beresford, Bernie
Youngquist, Harvey Windels, George Marx, Olaf Soine, Bill
Menzhuber and Gene Miller



Former Employees, Richard Winston Johnson,
Nap Amiot, Elmer Radke, Percy Colborn and Alvin
Hoefs.

**Reminder: Attend Crops & Soils Day
Wednesday, July 19th.**

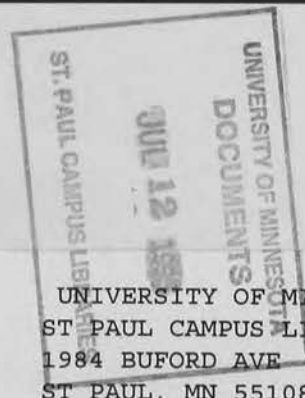
**The Northwest Experiment Station
University of Minnesota
Crookston, MN 56716-5001**

The Northwest Experiment Station News
Patti Malme, Associate Editor

The University of Minnesota is committed to the policy that all persons shall have equal access to its programs, facilities, and employment without regard to race, color, creed, religion, national origin, sex, age, marital status, disability, public assistance status, veteran status, or sexual orientation.

This publication/material is available in alternative formats upon request. Please contact Patti Malme, NWES, (218) 281-8602.

Address Correction Requested



UNIVERSITY OF MINN
ST PAUL CAMPUS LIBRARY
1984 BUFORD AVE
ST PAUL, MN 55108

Nonprofit Organization
U.S. Postage
PAID
Permit No. 10
Crookston, MN 56716