

# Arboretum Review



## Shrub and old-fashioned roses

4. ARBORETUM REVIEW NO. 22—1975  
LEON C. SNYDER

There is a growing interest in roses that do not require complete winter protection. To find out which of shrub and species roses can be grown in Minnesota, the arboretum has planted several hundred different species and cultivars in a special planting area. The old-fashioned roses are sponsored by the Kenwood Garden Club. The modern shrub and species roses are sponsored by the Minnesota Rose Society. Distinction between modern and old-fashioned roses is arbitrary. Any variety that was developed and introduced at least 100 years ago is considered old-fashioned.

The old-fashioned and modern shrub roses will be considered under these classes:

Albas	Hybrid Perpetuals
Bourbons	Modern Shrub Roses
Centifolias	Moss
Damasks	Rugosa Hybrids
Gallicas	Species
Hybrid Musks	

These groups differ in breeding and time of introduction. Some bloom just once during the season, while others have repeat bloom. Some develop colorful hips or fruits in late summer and fall.

**Alba** roses are thought to have originated in the Crimea from a natural hybrid between *Rosa damascena* and a white form of the Dog Rose (*Rosa canina*). Alba roses gained their greatest popularity in England where they were introduced by the earliest Roman traders before 77 A.D. At the peak of their popularity in England during the last century, over 100 cultivars were listed. Today only about 20 cultivars are in the trade. Ten of these have been tested in the arboretum. These cultivars all flower in June and range from single to fully double. The flowers are very fragrant. Winter injury can vary from none to severe, depending on the cultivar and the severity of the winter.

**Bourbon** roses are of relatively recent origin. They originated in the Indian Ocean on the island known as L'Isle Bourbon (Reunion). Soon after the introduction of the China Rose (*Rosa chinensis*) to the west, plants of this species were planted as hedges on the island's farms. It was the custom to plant a hedge of the Pink China rose on one side of the property and a hedge of the Autumn Damask on the other. A. M. Perichon discovered one rose differed markedly from either species. He took it to his garden, and when it bloomed, it was evident the rose was a natural hybrid. In 1822, M. Breon, a plant scout for the French government, visited the island. He saw this new rose and sent plants and seeds to Paris. From plantings in Paris, several cultivars were selected and named. Hybridization between the China and Damask roses continued. Those that bloomed only in the spring were put into a class called Hybrid Chinas. Those that had repeat blooms were called Bourbons. Of the hundreds of Bourbons that were listed by writers, only a few are left. Eleven have been tested in our trials. Generally, the plants are similar to the Hybrid Teas in their flowers. Winter injury can vary from none to severe, depending on the winter and the cultivar.

**Centifolia** roses developed in about 1700 after about a century of breeding by Dutch nurserymen. Cytological studies indicate that *Rosa damascena* and *Rosa alba* were involved in the ancestry. This class shows similarities between the two species. The flowers are white to deep pink. The plants are taller than the Damask roses and have more pronounced prickles. We have tested 11 of these Centifolias. These have been quite hardy, with good bloom in June.

**Damask** roses had an early origin; they were known in early Greek times. Two types exist: the Summer Damask; and the Autumn Damask. For both types, the female parent was *Rosa gallica*. The male parent is a matter of conjecture. For the Summer Damask (*Rosa x damascena*), the male parent is probably *Rosa phoenicia*. For the Autumn Damask (*Rosa x damascena bifera*), the male parent is probably *Rosa moschata*. The Summer Damask roses are quite upright with stems that have prickles mixed with strong, hooked thorns. Foliage is grayish green, covered with hairs. Blooms are pink to white, semidouble to very double and fragrant. Autumn Damask roses are becoming quite rare. The plant habit is similar to the Summer Damask, but the foliage is olive-green. The fruits are elongated and funnel-form as contrasted to the round fruits of the Summer Damask. These roses have been quite hardy.

Gallica roses are of ancient origin. The Apothecary's Rose, *Rosa gallica officinalis*, was cultivated at the time of the Roman Empire; it was, no doubt, brought to England and France by the Romans. In the 13th century, a sizeable industry developed in the town of Provins, France, based on the use of the rose petals in a conserve that was supposed to cure many ailments. The variety *officinalis* was brought to America by early colonists and was widely planted. The striped variety, *versicolor*, called 'Rosa Mundi,' is apparently a sport of *officinalis*. The number of its cultivars increased rapidly during the 17th century, with thousands listed by 1800. These cultivars were similar, being difficult to distinguish. Fortunately, the number of cultivars has declined; now only a few are available. We have about 20 in our collection.

Most of the Gallicas have branches that are erect and stiff. They are seldom more than 5 to 6 feet tall. The prickles are weak, straight, and rather sparse. The leaves have five leaflets and are thick and rough. Blooms are pink to red and include single, semidouble, and double types. Individual flowers are borne on stiff, erect stems. Most Gallicas have proven to be quite hardy.

**Hybrid Musk** roses are of comparatively recent origin, having originated early in this century from crosses made by Reverend J. R. Pemberton of England. Most of the cultivars resulted from crosses between *Rosa multiflora* and the Noisette roses that were developed from the Musk rose, *Rosa moschata*, crossed with the China rose, *Rosa chinensis*, or one of its hybrids. The Hybrid Musk roses resemble *R. multiflora* more than they do *R. moschata*. They are vigorous, pillar-type roses that exhibit repeat bloom. The flowers vary greatly in size, and they range from single to fully double. As a group, they lack winter hardiness, usually freezing back to the snow or ground line. They usually sprout from the base, and once the dead wood is removed, they develop into attractive plants with good fall bloom. Although we grow ours without support, they would be more attractive if trained on pillars or a trellis. A mulch applied around the base of the plants is advised for winter protection.

**Hybrid Perpetuals** appeared in the middle of the 19th century. The exact origin is not clear, and, no doubt, numerous species and cultivars were involved. Undoubtedly, the Gallica and China roses entered into the early breeding. The bloom is certainly not continuous or perpetual, but most varieties do form a few flowers on new wood. The greatest display, however, comes in June. The flowers are mostly double, fragrant, and some shade of pink. Interest in the Hybrid Perpetuals has declined since the introduction of the Hybrid Teas. Most varieties have a fair degree of hardiness, but die back is common. A winter mulch is advised.

**Moss** roses are special in the rose world. The early mosses developed as sports of the Centifolias. They differ by having green, mosslike growth on the sepals. Later, cultivars of moss roses have been developed by hybridization with other species and cultivars. The moss roses were developed largely in the last century, but roses with the moss characteristic are still being developed. Most true moss roses bloom once—in late June, although some more recent hybrids have repeat bloom in June. Some die back can be expected most years.

**Rugosa Hybrids.** The Rugosa rose, *Rosa rugosa*, is native in northeast Asia. It is one of the few species having repeat bloom. Typically, the species has single flowers of a light magenta-red color. A white form, *R. rugosa alba*, is also known. The rugose foliage—that is quite disease free—is characteristic of the species. Numerous hybrids have been developed using *R. rugosa* as one of the parents. These hybrids differ greatly in flower size, form, and color. Both the species and the hybrids are remarkably hardy; they deserve to be more widely planted.

**Shrub Roses.** This is a dumping ground for modern shrub roses developed from hybridization that don't fit into other classes. Many species and cultivars have entered into their development. Hardiness ranges from fully hardy to very tender. A few have repeat bloom, but most cultivars bloom only in the spring.

**Species Roses** are those occurring naturally in the wilds. Some make attractive ornamentals, but most are inferior to selected cultivars.

This archival publication may not reflect current scientific knowledge or recommendations.  
Current information available from University of Minnesota Extension: <http://www.extension.umn.edu>.

With nearly three hundred kinds of old-fashioned and shrub roses in our collection, it is not possible to describe each cultivar and species. Information will be given in tabular form. This information represents published descriptions and observations at the arboretum. Some cultivars have been growing for as long as 15 years. Others have been planted more recently. This preliminary evaluation is based primarily on their performance in the arboretum. The chart is self-explanatory. The column marked origin gives the date of introduction when this is known. The size is given in feet and shows height x width. The size of flowers is

the width in inches. Under type, S = single; SD = semidouble; and D = double. For hardiness, a scale of 1-5 is used: 1 = fully hardy; 2 = slight die back; 3 = moderate die back; 4 = severe die back; and 5 = death of plant. Hardiness ratings vary greatly for the same plant from year to year, and this range is indicated. No winter protection has been used except for a little straw mulch around the base of some of the more tender classes—such as the Hybrid Musks, Hybrid Perpetuals, and the Kordesii Hybrids (listed under shrub roses).

Class and Name	Year of origin	Size H x W	Flowers			Time of bloom	Fra-grance	Hardi-ness	Remarks
			Size	Type	Color				
<b>Alba</b>									
Belle Amour		6 x 5	2½-3	SD	salmon pink	June	yes	3-4	
Celestial		4 x 4		SD	clear pink	June	yes		
Chloris		5 x 5	2½	D	light pink	June	yes	1-4	
Felicite Parmentier	1834	5 x 5	2-3	D	pale pink	June	yes	2-5	
Jeanne D'Arc	1818	5 x 4		D	creamy flesh	June	yes	3	
Koenigen von Daenemark	1826	5 x 5	2½	D	carmine pink	June	yes	1-3	
Maiden's Blush	1738	6 x 6	2	D	blush pink	June	yes	2-5	
Madame LeGras de St. Germain	1846	4 x 6	2½	D	white	June	yes	2-5	
Pompom Parfait	1876	5 x 4	2	D	lilac pink	June	yes	2-4	
<b>Bourbon</b>									
Commandant Beurepaire	1874	5 x 4	3-4	D	striped pink	June	yes	1-3	
Coquette des Alpes	1867	3 x 3	1½	D	light pink	repeat	yes	1-4	
Gypsy Boy		5 x 6	2	D	light purple	June	yes	2-4	
Honorine de Brabant		6 x 5	2-3	D	pink	June	yes	2-4	
La Reine Victoria	1872	5 x 4		SD	lilac pink	repeat	yes		
Louise Odier	1851	6 x 5	2½	D	light pink	repeat	yes	3-4	clusters
Madame Ernest Calvat	1888	6 x 5	2½	D	flesh pink	repeat	yes	1-4	
Madame Isaac Periere	1881		3	D	rose pink	June	yes	4-5	
Madame Pierre Oger	1878	2 x 2	2½	D	lilac rose	repeat	yes	2-5	
Souvenir de la Malmaison	1843	5 x 5	3-4	D	flesh pink	June	yes	2-4	
Zepherine Droughin	1868	5 x 4	3	SD	bright pink	repeat	yes	4-5	
<b>Centifolia</b>									
Blanche fleur	1835	5 x 5	2-3	D	creamy white	June	no	2-4	
Bullata	1801	4 x 5	3	D	medium pink	June	yes	2-4	leaves crinkled
De Meaux	1789	3 x 4	1½	D	pale pink	June	yes	1-4	
Fantin Latour		5 x 4	2-3	D	blush pink	June	yes		
Juno	1847	4 x 4	3	D	blush pink	June	yes	3	
Petite de Hollande		4 x 4	2	D	blush pink	June	yes	1-4	
Prolifera de Redoute		4 x 4	3	D	medium pink	June	yes	2-5	
Rose des Peintres		5 x 5		D	bright pink	June	yes	4	
Tour de Malakoff	1856	4 x 4	2	D	purplish crimson	June	yes	2-4	
Vierge de Clery		5 x 5	2	D	deep pink	June	yes	1-4	
<b>Damask</b>									
Celsiana	1750	3 x 4	2	D	rose pink	June	yes	1-4	
Cesonie		4 x 6	2½	D	deep pink	June	yes	2-4	
Four Seasons		6 x 5	2¾	SD	deep pink	repeat	yes	3-4	= R. damascens semperflorens = R. damascena trigintipetala
Kazanlik		4 x 6	1½	SD	rose pink	June	yes	1-2	
Leda		5 x 5	1½	D	blush white	June	no	1-3	
Marie Louise	1813	4 x 6	3	D	mauve pink	June	yes	1-3	
Madame Hardy	1832	5 x 5	2	D	white	June	yes	1-3	
Omar Khayyam		4 x 4	1½	D	blush pink	June		4	
St. Nicholas		3 x 4	1½	SD	rose pink	June			fruits large, red orange
<b>Gallica</b>									
Alain Blanchard	1829	4 x 6	2¼	S	purplish crimson	June		1-4	round, red fruits
Belle des Jardins	1872	4 x 6	1½	D	white striped on red	June	yes	2-4	
Belle Isis		4 x 4	3	D	flesh pink	June			
Camaieux		4 x 3	1½	SD	splashed crimson on pink	June	yes	1-4	
Cardinal de Richelieu		4 x 5	2½	D	velvet purple	June	yes	2-4	
Charles de Mills		5 x 6	1½	D	crimson maroon	June	yes	1-4	
Desiree Parmentier		5 x 6	2¼	D	vivid pink	June	yes	1-4	
Empress Josephine		4 x 3	2¼	SD	purplish rose	June	yes	1-4	
Grandiflora	1906	7 x 9	3	S	deep pink	June	yes	1-2	very good fruits— round, red
Jeannette		5 x 4	2¼	D	light red	June	yes	2-5	
Narcisse de Salvand		5 x 6	2½	D	light pink	June	yes	2-4	
Nestor		5 x 5	2½	D	lilac pink	June	yes	2-4	
President de Seze		4 x 6	2½	D	light purple	June	yes	1-2	
Rosa Mundi	1851	4 x 5	2½	D	red stripes on pink	June	yes	1-4	
Rose du Maitre D'ecole		5 x 4	3	D	deep rose	June	yes	1-4	
Tuscany		4 x 4	3	SD	white flecked crimson-maroon	June	yes	1-4	
Tuscany Superb		4 x 6	3	SD	crimson-maroon	June	yes	2-4	

Class and Name	Year of origin	Size H x W	Flowers			Time of bloom	Fragrance	Hardiness	Remarks
			Size	Type	Color				
<b>Hybrid Musk</b>									
Ballerina	1937	4 x 4	1½	S	pink, white center	repeat	yes	4	flowers clustered
Belinda	1936	4 x 5	1	SD	bright pink	repeat	yes	4-5	flowers clustered
Bishop Darlington	1926	4 x 5	¾	SD	flesh pink	repeat	yes	4-5	flowers clustered
Bloomfield Dainty	1924	5 x 5	1½	S	canary yellow	repeat	yes	4-5	flowers clustered
Bonn	1950	5 x 4	2	SD	orange scarlet	repeat	yes	4	small, red fruits
Buff Beauty		3 x 4	1½	D	apricot yellow	repeat	yes	4-5	flowers clustered
Danae	1913	3 x 4	1¼	D	buff yellow	repeat		4-5	flowers clustered
Daphne	1912	4 x 5	1	SD	blush pink	repeat	yes	4	flowers clustered
Elmshorn	1951	4 x 4		D	cherry red	repeat		4	flowers clustered
Felicia	1928	5 x 5	1¼	D	silver pink	repeat		4-5	flowers clustered
Francesca	1922		2½	S	apricot	repeat	yes	4-5	flowers clustered
Grand Master	1954	3 x 3		SD	apricot pink	repeat		4	flowers clustered
Kathleen	1922	3 x 5	2½	S	blush pink	repeat	yes	4-5	flowers clustered
Nastarana	1879	3 x 2	1½	SD	white to pink	repeat	yes	4-5	
Pax	1918	3 x 3	3	SD	creamy white	repeat		4-5	flowers clustered
Penelope	1924	3 x 4		SD	salmon pink	repeat	yes	4	flowers clustered
Prosperity	1919	2 x 4		SD	ivory white	repeat	yes	4	flowers clustered
Rosaleen	1933	3 x 3		D	dark red	repeat		4-5	flowers clustered
Thisbe	1918	5 x 6	2	SD	creamy buff	repeat	yes	4	flowers clustered
Vanity	1920	3 x 3	2	S	crimson pink	repeat	yes	4	flowers clustered
Wilhelm	1934	5 x 7	2½	D	deep red	repeat	yes	4-5	flowers clustered
Will Scarlet	1948	4 x 4	1½	SD	scarlet	repeat	yes	4-5	flowers clustered
Wind Chimes		4 x 6	1	S	pink, white center	repeat		2-4	flowers clustered
<b>Hybrid Perpetual</b>									
Alice Vena		3 x 3	1½	D	plum purple	repeat	yes	3-4	
American Beauty	1875	4 x 5	1¾	D	smoky carmine	repeat	yes	1-4	
Arrilaga	1929	4 x 4		D	pale pink	repeat	yes		
Baron Girod de l'Ain	1897	3 x 3		D	white edged crimson	repeat	yes	4	
Baroness Rothschild	1868		1½	D	deep pink	repeat	yes	1-4	
Barrone Prevost	1842	3 x 3	3	D	purplish pink	repeat	yes	1-4	
Black Prince	1866	3 x 4	2½	D	dark crimson	repeat	yes	2-4	
Captain Hayward	1893	3 x 3		D	light crimson		yes		
Castilian		3 x 4	1¼	SD	pink		yes	2-4	
Duchess of Sutherland	1839	3 x 3	1½	D	rosy pink	repeat		2-4	
Ferdinand Picard	1921	4 x 4	2	SD	pink splashed crimson	repeat	yes	2-4	
Frau Karl Druschki	1901	4 x 4	3½	D	white	repeat	yes	3-4	
General Jaqueminot	1853	5 x 4	4	D	clear red	repeat	yes	1-4	
George Arends	1910	3 x 4		D	rose pink	repeat	yes		
Heinrich Munch	1911			D	soft pink	repeat	yes	5	
J. B. Clark		3 x 3			dark pink	repeat		3-4	
Jubilee	1897	3 x 3		D	velvety purple	repeat	yes		
Juliet	1910	2 x 2	2½	D	rosy red	repeat	yes	3-4	
Mabel Morrison	1878	2 x 2	2	SD	flesh white	repeat		1-5	
Magna Charta		3 x 4	2	D	dark pink	repeat	yes	3-4	
Margaret Dickson	1891	4 x 2	2½	D	flesh pink	repeat	yes	3-4	
Marquis Bucella		3 x 3	2	D	pink	repeat	yes		
Marshall P. Wilder		4 x 3	1½	D	dark pink	repeat	yes	1-4	
Merveille de Lyon		4 x 3	3½	D	rose white	repeat	no	3-4	
Madame Victor Verdier		4 x 4	2½	D	red	repeat	yes	3-4	
Mrs. John Laing	1887	5 x 5	3	D	soft pink	repeat	yes	3-4	
Reine des Violettes	1860	4 x 5	3	D	violet red	repeat	yes	1-4	
Roger Lambelin	1890	2 x 2		D	crimson striped white	repeat	yes	4-5	
Senateur Vaisse		3 x 3		D	deep pink	repeat	yes	4	
Symphony	1935	3 x 2	3	D	flesh pink	repeat	yes	4	

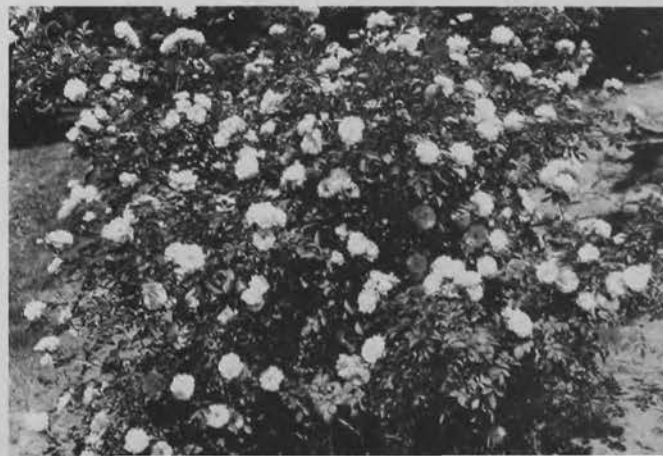


Elmshorn is an attractive Hybrid Musk rose featuring repeat bloom.

Class and Name	Year of origin	Size H x W	Flowers			Time of bloom	Fragrance	Hardiness	Remarks
			Size	Type	Color				
<b>Moss</b>									
Alfred de Dalmas	1855	3 x 4	2½	D	creamy blush	repeat	yes	2-4	
Anni Welter		4 x 6	3½	D	pink	June		4	
Capitaine Basroger	1890	5 x 6	2¼	D	crimson purple	June	yes	3-4	
Capitaine John Ingram	1854	4 x 4	2¼	D	crimson purple	June	yes	3-4	
Chevreul		4 x 6	3	D	pink	June	yes	3-4	
Communis		4 x 6	1½	D	flesh white	repeat	yes	2-4	
Comtesse de Murinais		6 x 5	1½	D	flesh white	June	yes	2-4	
Crested Moss	1827	5 x 5	2	SD	velvet red	June	yes	2-4	
Deuil de Paul Fontaine	1873	4 x 4	1½	D	purplish red	repeat	yes	2-4	
Duchess de Verneuil	1856	4 x 4	3	D	bright pink	June	yes	2-4	
Eugenie Guinoisseau	1864	2 x 3			cerise magenta	repeat		3	
Gabriel Noyelle	1933	6 x 6	3	SD	light pink	repeat	yes		
General Kleber	1856	5 x 6	2	D	pink	June	yes	3-4	
Gloire des Mousseaux	1852	4 x 4	2	D	pink	June	yes	2-4	
Gracilis		5 x 4	3	D	pink	June	yes	3-4	
Henri Martin	1863	5 x 8	1½	D	crimson purple	June	yes	1-4	
Jeanne de Montfort	1851	6 x 5	1½	D	rose pink	June	yes	2-4	
Julie de Mersent		5 x 6	2½	D	pink	June	yes	2-4	
La Neige		5 x 6	2½	D	purple	June	yes	2-4	
Laneii	1845	5 x 4	3	D	rose crimson	June	yes	3-4	
Louis Gimard	1877	5 x 6	2¼	D	lilac cerise	June	yes	2-4	
Madames de la Roche Lambert	1851	5 x 4	2½	D	pink	repeat	yes	2-4	
Marquis Bocella		3 x 2	2½	D	pink	repeat	yes	2-4	
Mossman		5 x 6	1¼	SD	pink	June	yes	1-4	
Nuits de Young		5 x 7	1½	D	maroon purple	June	yes	2-3	
Old Red Moss		6 x 6	3	D	crimson	June	yes	3-4	
Quatre Saisons Blanc Mousseau		4 x 4	2½	D	white	June	yes	4	
Robert Leopold		5 x 6	3	D	flesh pink	June	yes	2-4	
Salet	1854	6 x 6	3	D	light pink	June	yes	2-4	
Striped Moss	1888	5 x 4	1¾	SD	striped pink	June	yes	2-4	
Waldtraut Nielsen		5 x 6	3½		pink	June		3-4	
White Bath	1810	5 x 4	2	D	white	June	yes	2-4	
William Lobb	1855	5 x 6	2¼	D	crimson purple	June	yes	3-4	
<b>Rugosa Hybrids</b>									
Agnes	1922	5 x 4	3	D	amber yellow	repeat	yes	1-4	
Amelia Gravereaux		4 x 3	3	SD	lavender pink	repeat	yes	1-4	
Belle Poitevine	1894	4 x 6	3	SD	purplish pink	repeat	yes	1-3	large orange fruits
Blanc Double de Coubert	1892	4 x 6	3	SD	snowy white	repeat	yes	1-3	orange scarlet fruits
Conrad F. Meyer	1899	3 x 3	3½	SD	silvery pink	repeat	yes		
Delicata	1898	4 x 5	2½	SD	lilac pink	repeat	yes	1-2	
Dr. Echener	1931		3	SD	coppery rose	repeat	yes	2-5	
F. J. Grootendorst			1	D	dark pink	repeat		2-4	clustered flowers
Frau Dagmar Hartopp	1914	3 x 4	3½	S	shell pink	repeat	yes	2-4	tomato red fruits
George Will		5 x 4	3	D	light red	repeat	yes	1-2	round, red fruits
Grootendorst Supreme	1936	4 x 5	1	D	crimson red	repeat	no	2-4	clustered flowers
Hansa	1905	5 x 7	2	SD	reddish violet	repeat	yes	1-2	red fruits
Max Graff	1919	2 x 12	2¼	S	pinkish white	June	no	2-4	ground cover
Mrs. John McNab		5 x 8	2	D	white	repeat	yes	1-3	
Pink Grootendorst	1923	4 x 4	1	D	pink	repeat		2-4	flowers clustered
Rose a Parfume de l'Hay	1901	4 x 6	3	SD	cherry red	repeat	yes	2-4	
Ruskin	1928	4 x 8	1½	D	red	repeat	yes	1-3	small red fruits
Sarah van Fleet	1926	4 x 4	3	SD	China pink	repeat	yes	2-4	
Schneezweg	1912	5 x 5	2	SD	white	repeat		1-3	
Sir Thomas Lipton	1900	4 x 5	2	SD	white	repeat	yes	1-3	
Therese Bauer	1963	4 x 6	2½	SD	pink	repeat	yes	1-2	
Vanguard	1932	4 x 4		D	salmon orange		yes		
Wasagaming	1939	6 x 7	2½	D	clear rose	repeat	yes	1-2	
Will Alderman	1949	4 x 5	1½	D	lilac pink	June	yes	1-3	round, red fruits

Class and Name	Year of origin	Size H x W	Flowers			Time of bloom	Fragrance	Hardiness	Remarks
			Size	Type	Color				
<b>Shrub</b>									
Alexander von Humboldt		4 x 4	1½	D	bright red	repeat	no	4-5	Kordesii hybrid
Amy Robsart		6 x 6		SD	clear pink	June		4	R. eglantera
Apple Blossom		3 x 3	1½	D	pink	repeat	yes	3-5	from Canada
Assiniboine		4 x 4	3	SD	red	repeat		1-2	from Canada
Betty Bland		4 x 4	2	SD	pink	June	no	1-3	small, round fruits
Black Boy		6 x 6	1½	D	crimson purple	repeat	yes	1-4	
Blue Boy		6 x 6	3	D	lilac pink	June	yes	1-4	
Chamcock		3 x 5	2½	D	pink	June		2-3	
Coryana		6 x 6	3	S	lavender pink	June		3-4	
Country Music		2 x 3	2	D	rose pink	repeat			from Iowa
Cuthbert Grant		2 x 2	4	D	red	repeat	no		from Canada
Dr. Merkely		4 x 10	2½	D	pink	June		1-2	suckers freely
Dornroschen	1960	3 x 3		D	salmon	repeat	yes	4	clustered flowers
Dortmund	1955	5 x 5	3	S	bright red	repeat	no	4	Kordesii hybrid
Eddie's Crimson		6 x 8	2¾	SD	red	June	yes	4	R. moyesii
Fruhlingsanfang		5 x 5	3½	S	pale yellow	June	yes	2-4	R. spinosissima hybrid
Fruhlingsduft		5 x 6	3½	D	light yellow	June	yes	1-5	R. spinosissima hybrid
Fruhlingsgold		7 x 7	4	S	pale yellow	June	yes	1-4	R. spinosissima hybrid
Fruhlingsmorgen			5	S	pink	June		1-5	R. spinosissima hybrid
Fruhlingszauber			3	S	pink	June		2-5	
Golden Wings		4 x 4	3	S	yellow	repeat	yes	4	
Haldie		8 x 10	2½	D	pale pink	repeat	yes	1-2	large red fruits suckers
Hanson Hedge		6 x 5	2¾	S	pink	June		1	small, red fruits
Illusion		5 x 10	s½	D	rose red	repeat	yes	4	Kordesii hybrid
Karlsruhe		3 x 4	2¾	D	pink	repeat	no	2-4	Kordesii hybrid
Lawrence Johnston		5 x 6		SD	clear yellow	June	yes	4-5	
Lilian Gibson		9 x 10	1½	D	light pink	June	no	1-2	from South Dakota
Mabelle Stearns		4 x 4	1	D	pink	repeat	yes	3-4	
Maigold		3 x 3	3	D	red	June	no	4	
Mannheim		3 x 3	3	D	red	repeat	no	4	
Marguerite Hilling		6 x 6	1¾	SD	light pink	June	yes	2-4	moyesii hybrid
Martin Frobisher		5 x 5	2½	D	light pink	repeat		2-3	Canadian
Metis		5 x 4	2½	D	pink	June		2-3	Canadian dark red fruits
Morgangruss		2 x 6	3½	D	creamy pink	repeat	yes	3-4	Kordesii hybrid
Music Maker		2 x 3	3	D	pale pink	repeat	yes		from Iowa
Nevada		6 x 4	5	SD	creamy white	June	no	1-4	
Prairie Dawn		6 x 6	2	D	deep pink	repeat	yes	1-3	Canadian
Prairie Wren		6 x 12	2	SD	pale pink	June	yes	1-2	Canadian
Prairie Youth		6 x 8	2½	SD	pale pink	June	yes	1-2	
Raymond Chenault		3 x 6	3	D	rosy red	repeat	yes	4	
Saarbrucken		4 x 4	3	D	dark red	June	no	4-5	
Sangerhausen		3 x 2	3	D	reddish bronze	June	yes	4	
Scharlachglut		6 x 8	3	S	red	June	yes	4	
Sparrieshoop		3 x 3			salmon	repeat	yes	4	
Stadt Rosenheim		3 x 4	2½	D	pink	June		4	
Stanwell Perpetual		4 x 4	2½	SD	blush pink	June	yes	2-4	
Suzanne		5 x 8	1½	D	pale pink	June	yes	1	suckers
Therese Bugnet		6 x 6	2	D	lavender pink	repeat	yes	1-3	
Von Scharnhorst		6 x 4	3	SD	pale yellow	repeat	yes	2-3	
Wandering Wind		4 x 4	3	SD	pink	repeat			from Iowa
Wasagaming		5 x 5	2½	D	lavender pink	June	yes	1-2	Canadian
Weisse aus Sparrieshoop	1962	3 x 5		S	white	repeat		4	
Wildenfelsgelb		5 x 3	2½	S	pale yellow	June	yes	2-4	
Zweibrucken		5 x 5	3	D	deep crimson	repeat	no	3-4	flowers clustered

Prairie Dawn is a hardy Shrub that was developed in Morden, Manitoba. It features repeat bloom.





Fruhlingsanfang, a Shrub, was developed in Germany. It blooms only in June.



Wasagaming is a hardy Shrub developed in Canada.

Class and Name	Year of origin	Size H x W	Flowers			Time of bloom	Fragrance	Hardiness	Remarks
			Size	Type	Color				
<b>Species</b>									
Rosa arkansana		4 x 3	1½	S	pale pink	June	yes	1-2	small, red fruits
Rosa blanda		6 x 7	3	S	pink	June	yes	1-2	small, red fruits
Rosa canina (Dog)		4 x 4	1½	S	pink	June	yes	1-4	red fruits
Rosa foetida 'Austrian Copper'		3 x 2	2	S	copper red	June	yes	1-4	
Rosa foetida 'Persian Yellow'		3 x 2	2	S	yellow	June	yes	1-4	
'Rosa harisonii' 'Harrison's Yellow'		3 x 3	2	D	yellow	June	yes	1-2	
Rosa hugonis (Father Hugo's)		5 x 6	2	S	pale yellow	June	yes	1-3	
Rosa laxa		8 x 9	2	S	white	June	no	1	pear-shaped fruits
Rosa macounii		7 x 9	1½	S	pink	June	yes	1-2	small, red fruits
Rosa mollis		8 x 10	1½	S	pale pink	June	no	1-2	red fruits
Rosa multiflora		4 x 10	1	S	white	June	no	4-5	clustered flowers small, red fruits
Rosa palustris		4 x 5	2	S					
Rosa pendulina		8 x 8	2	S	white	June	no	1-2	small, orange fruits
Rosa pomifera		8 x 6	1½	S	pink	June	no	1-2	large, red fruits
Rosa primula		10 x 10	2	S	pale yellow	June		1-2	
Rosa rubrifolia (Red Leaf)		6 x 8	1½	S	pink	June	yes	1	small, red fruits
Rosa rugosa (Rugosa)		5 x 10	2	S	pink	repeat	yes	1-2	medium, red fruits
Rosa rugosa alba		2 x 3	2	S	white	repeat	yes	1-2	orange fruits
Rosa rugosa 'Magnifica'		5 x 6	1½	D	lavender pink	repeat	yes	1-2	
Rosa sertata (Garland)		5 x 4	2	S	rose purple	June		1-3	
Rosa setigera (Prairie)		5 x 5	2	S	pale pink		no	2-4	
Rosa soulieana		3 x 6	1½	S	white	June		3-4	orange-red fruits
Rosa virginiana		4 x 2		S	pink			3-4	medium, red fruits
Rosa wichuriana		1 x 8	1	S	white			4-5	small, red fruits
Rosa woodsii		2 x 2	1½	S	pink			3	large red fruits

Agricultural Extension Service  
Institute of Agriculture  
University of Minnesota  
St. Paul, Minnesota 55108

Cooperative Agricultural Extension Work  
Acts of May 8 and June 30, 1914

OFFICIAL BUSINESS

POSTAGE AND FEES PAID  
U.S. DEPARTMENT OF  
AGRICULTURE  
AGR 101

