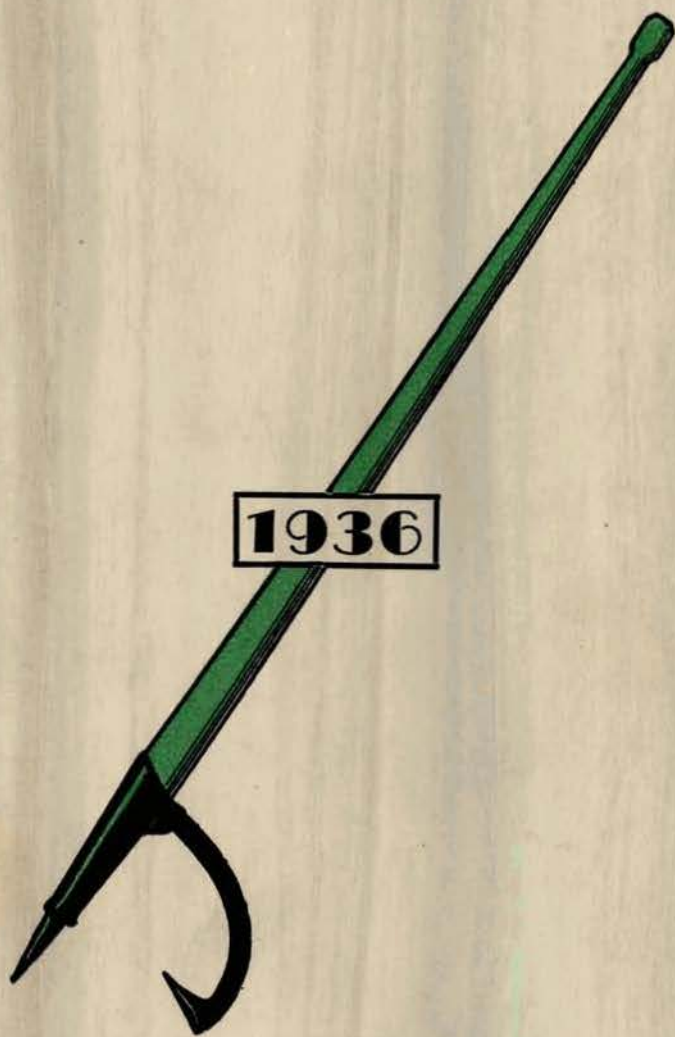


# GOPHER PEAVEY



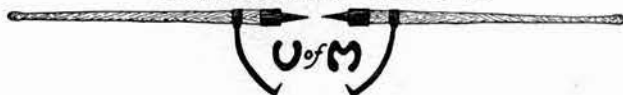
Forestry Club

UNIVERSITY of MINNESOTA

THE  
1936  
GOPHER PEAVEY



FORESTRY CLUB



*Published Annually by the Forestry Club*



## A FOREST

*An open forest,  
Deep and endless,  
Row after row  
Of purple trunks,  
Long dim vistas  
Where shadows play  
With gay sunbeams  
Stealing in and out  
Through the sombre dome  
The great leaf crowns  
Are forming.*

MARY WIRT FRY.



## *Dedication*

As a slight token of our appreciation  
of his steadfastness and singleness of  
purpose in his relentless defense of the  
truth, we are proud to dedicate this  
book to our first alumnus  
Herman Haupt Chapman

## *Foreword*

In keeping with the rapid advances of Forestry we have deemed it fitting, in like manner, to bring the GOPHER PEAVEY up to the stride of these advances.

The PEAVEY has grown from a mere ideal to a merited publication which has won its place with the students, alumni, and friends of forestry.

The memories of our experiences are our most cherished possessions and if the PEAVEY succeeds in transcribing the events of the students now in school and recapitulating memories to those who were here before us, we feel that our aim has been accomplished to the fullest measure.

We present the 1936 GOPHER PEA-VEY » » may this be a means of coalescing Minnesota foresters and inspiring those who follow to greater achievements.

GOPHER PEAVEY STAFF.

# CONTENTS

	PAGE
DEDICATION - - - - -	5
 FEATURES	
OUR FORESTS AND NATIONAL SECURITY <i>by F. A. Silcox</i> - - - - -	9
THE DEPENDENCE OF STATE FORESTRY ON NON-POLITICAL CONTROL <i>by H. H. Chapman</i> - - - - -	11
FORESTRY FROM THE STANDPOINT OF THE COMMERCIAL LUMBERMAN <i>by R. M. Weyerhaeuser</i> - - - - -	14
SOME PRACTICAL ASPECTS OF FORESTRY EMPLOYMENT <i>by F. T. Fredrickson</i> -	20
LIGHT FROM THE DARK CONTINENT - - - - -	25
FOREST INSURANCE <i>by A. Z. Nelson</i> - - - - -	28
 SCHOOL ACTIVITIES	
FORESTRY CLUB - - - - -	32
1936 GRADUATING CLASS - - - - -	34
THE MAGIC WELL <i>by E. G. Cheyney</i> - - - - -	42
FRESHMAN CORPORATION 1935 - - - - -	43
JUNIOR CORPORATION - - - - -	47
CLASS OF 1937 - - - - -	52
CLASS OF 1938 - - - - -	53
CLASS OF 1939 - - - - -	54
FORESTER'S DAY - - - - -	55
VOYAGEURS - - - - -	58
TAU PHI DELTA - - - - -	60
XI SIGMA PI - - - - -	61
THE GRADUATE SCHOOL - - - - -	62
 ALUMNI SECTION	
ALUMNOTES - - - - -	65
ALUMNI DIRECTORY - - - - -	83

# 1936

## Gopher Peavey Staff



YALE WEINSTEIN  
*Editor*



RICHARD SMITH  
*Associate Editor*



HERBERT ERICKSON  
*Business Manager*



HERMAN ARLE  
*Alumni Editor*



MYRON OSTRANDER  
*Photographic Editor*



JOHN RISS  
*Circulation Manager*

Appreciation to Charles Hutchinson, Jack Mead, and Martin Meldahl for their work on the Peavey.

## OUR FORESTS, AND NATIONAL SECURITY

By F. A. Silcox,  
Chief, United States Forest Service



MR. F. A. SILCOX  
*Chief, United States Forest Service*

I once heard it said that a man's bravery is largely dependent upon his physical condition. Certain it is that strength and health infiltrate through a man's fibres, generating a conviction that, if he had to, he could "lick the world."

So it is with our national as well as our personal life. As a nation, we are recovering from a bad depression—a depression that has affected our spiritual outlook, which is, I suppose, another way of expressing a lack of confidence in ourselves. This feeling, I am glad to say, is today rapidly being dispelled. We are working our way

back to national health. And it is of particular significance to us, as foresters, that our forests have done and are continuing to contribute much toward this national recovery by providing a vast reservoir of useful and non-competitive work. The physical health and greatly improved mental outlook of some million young men who have been "graduated" by the Civilian Conservation Corps is one major result of such work.

But the job is just started. To put this country on a secure, firm and healthy basis, one big job is to rescue



its forests from a sickness which has been acute for the last decade. It is not a simple illness, however, but a complex one—one that will engage the energies and initiative of all the young men now studying forestry in our universities, as well as the men on the front line of work today.

That means a future for undergraduate foresters rich with opportunities which will lead them to new horizons, for forestry today is entering, I think, into its Golden Age. Forestry can no longer be considered as one narrow line of endeavor; it is, instead, a focal point for various apparently divergent sciences, trades and crafts. A working knowledge in modern economics, in political and social history and current trends, financial and legal fields of action, mechanical and electrical engineering and journalism—all find opportunity for profitable expression in forestry.

The problem we, as public foresters, see ahead of us demands concentrated action in all those fields. In brief, we have two tasks: first, the development and protection of our public forests and the guaranteeing—through the most advanced forestry methods—of a continuous, calculable supply of forest products and services from them. Second, the establishment of a national forest policy under which every acre of our timberlands, public and private, will contribute to a stabilized social and economic existence for individuals and communities dependent upon forest industries.

One can readily see how a program so broad as this will demand varied

skills, varied experience and a broad outlook which will serve to correlate the many lines of endeavor into a comprehensive unity of purpose.

It has been somewhat in fashion of late to decry patriotism. Perhaps that sort of patriotism that leads to a beligerent, chest-thumping national character should be decried. But there is deeper, smoother patriotism that comes from an intimate knowledge and love of the land—a feeling that in itself will instill a crusader's zeal for the country's welfare. This is a patriotism that will crystallize into a national security unshakeable by current fluctuations and which will be paralleled by a national unity as strong and enduring as one of our own American redwoods.

Foresters are fortunate. They can supply the answer to one of our national problems the solution of which can operate vigorously towards achieving such national security. Responsibility of that sort puts fire in a man's work; it keeps his interest, his curiosity, alive and burning; it gives him something to work for, not just a job upon which he merely exists.

All of which means a sort of spiritual health for the forester—and, through his work, a physical health for our forests, a vitality which, if managed with permanent security always in mind, will be able to provide life and security for those millions of Americans directly and indirectly affected by our forest resources. And whether in public or private practice, forestry carries with it the opportunity and the obligation of true patriotism.

## THE DEPENDENCE OF STATE FORESTRY ON NON-POLITICAL CONTROL

By H. H. Chapman

Employment in forestry has in all countries and at all times fallen more largely within the field of public than of private activities. The causes of this unequal division are well understood by economists and foresters in general. Forestry in its economic aspects comes down to the endeavor, by men whose span of active life is 30 to 40 years, to produce crops of wood which require twice that long to grow. This handicap operates most strongly against private enterprise, where the profit motive is the determining factor. This same profit motive, under unrestrained private initiative, transformed our original forests into waste areas whose remaining or surviving stands were so unpromising as a field for further private ventures that for the most part the original owners have relinquished title. It is true that private industry has been shortsighted in not realizing and grasping the possibilities of transforming their holdings of original growth into sustained yield properties. This could in many instances have been done not only without excessive cost but probably with great financial benefit to the industries. But it involved taking huge risks in unfamiliar territory. These risks were of three major orders; the risk of physical destruction by conflagrations incapable of control, not to speak of minor fires, and of decimation by imported diseases or insects; the risk of confisca-

tory taxation brought on by the excesses of local governments; and the risk of failure of the silvicultural measures upon which the reproduction of the forest and the entire future of the enterprise depended.

For instance; the Weyerhaeuser interests at Cloquet in 1902 employed C. S. Chapman (not H. H. Chapman) to prepare one of the "working plans" of which the U. S. Bureau of Forestry under Mr. Pinchot was undertaking in cooperation with private owners. The purpose of these plans was to demonstrate the possibilities of "sustained yield" forestry to these operators, that is, to show them at least, how the productivity of their lands could be perpetuated. Chapman recommended fire protection, the leaving of seed trees, and the definite policy of holding the lands for forestry.

But how was this company to insure a successful mastery of the fire problem which had so far (1902) defied all efforts to control it? Only and to the extent that the state could so improve its own organization for fire protection that through the continuous improvement of technique, supervision, detection, law enforcement and educated public support, the groundwork would be laid on which the company's own system could be built. Such state cooperation would be impossible unless politics were completely excluded from the personnel of the state forestry organization.

Fortunately, this miracle was accomplished, and under State Forester William T. Cox (1911) the force was built up on this basis. It never has been adequate and much remains to be done to overcome the ignorant and stubborn resistance of local settlers to fire prevention (in spite of the holocausts of the past). But as soon as conditions warranted it, the company did organize a very efficient force to control the risk of fire.

The other two obstacles remained. That of taxation still constitutes a major risk of increasing menace. Sums running into millions were squandered, since 1902, on swamp drainage and other improvements not warranted by sound economic analysis. For this reason alone the company was at the time justified in declining to adopt the proposed plan. Later, after the Cloquet fire, and the reorganization on a basis of intensive use of forest products tending to prolong indefinitely the industries at Cloquet, efforts were made, in connection with the U. S. Forest Taxation Inquiry, to secure remedial tax legislation. This came to naught through local shortsighted opposition. The present policy favored by the company is to encourage the local farmers to grow timber, carry the tax burden and thus help to solve this problem for the company.

The third obstacle was the uncertainty of success in securing reproduction and growing a new forest, even granting that fires could be controlled. Little was known of the real problems of silviculture. How had the white

pine stands originated and how could they be reproduced? Would planting have to be undertaken with its relatively huge initial cost, and high risk of destruction? Here again, public activity offered an ultimate solution, and on the Minnesota National Forest an extensive practical experiment was started in 1902. The results to date show that natural reproduction of Jack-pine is easily obtained. Norway pine will reproduce satisfactorily from seed trees provided this takes place before decades of fires and brush competition destroy the site. With white pine, the prime species on the Weyerhaeuser holdings, the problem is not yet solved and reproduction has largely failed on the National Forest from causes which have yet to be controlled. The complete elimination of politics in the U. S. Forest Service has permitted this experiment to function successfully and to the ultimate benefit of all land owners. The only serious threat to this status has arisen within the last two years in connection with appointments in C. C. C. camps.

Meanwhile, in the absence of approval of untried measures, the operations of the Company had removed all the seed trees and rendered these measures impossible of adoption on their lands.

We thus see that the early possibilities of private forestry depended almost entirely on state forestry measures for two out of three main problems, while the federal government tackled the third. In the fire problem alone has the state been able to bring

about measures which affected the private operator in time to be used. In taxation the state has failed as yet. In silviculture the splendid work of the University at the Cloquet Forest Experiment Station is an asset of constantly increasing value, but had to be conducted on cut-over and second-growth lands.

Minnesota has put up a valiant fight against political domination of the state forestry department. Had this been unsuccessful, not even fire protection would have been of a character to have justified private initiative in forestry. Political appointments render futile all efforts of a state to deal with conservation problems. The best success in securing and maintaining a non-political organization lies in the form of control of established by a board of 5 to 7 members with overlapping terms, preferably containing one or two members who, because of their technical knowledge and independent official positions are made *ex-officio* members of the board. This has been Minnesota's plan and it took a former governor about five years to secure the dismissal of the first state forester, William T. Cox, whom he wished to replace because of Cox's interference with an ancient system of sales of state timber. After several years of experimenting with a hydra-headed executive, the state, yielding to public demand, then reverted to the original

plan of an appointed commission, inclusive of fish and game and minerals. Again a struggle arose, this time with fish and game as the bone of contention and Mr. Cox for a second time was sacrificed. The vigorous fight put up both by such officials and by the public has at least partially protected the state forestry work from becoming the prey of political spoilsmen.

In thus resisting the principle of party politics as it affects state conservation activities, the issue does not lie between republicans, democrats or farmer-laborites, but between the citizens of the state and those who would reduce government to the level of the spoilsmen, bringing down in the common ruin all state endeavors and services, paralyzing efficiency and rolling up staggering burdens of taxation solely to fatten the coffers of political machines and grafting individuals.

Where technical administration becomes partisan it is almost certain to sink into corruption, dragging with it every office and service including state forestry. Viewed from a perspective of nearly forty years I would say that if public forestry is to fulfill its manifest functions, the average citizen must learn to demand a state government, regardless of the party in power, which will place all technical state executive services on a non-partisan basis of merit and efficiency.

## FORESTRY FROM THE STAND-POINT OF THE COMMERCIAL LUMBERMAN

By R. M. Weyerhaeuser

This whole subject of forestry reminds me of a three-legged stool because it involves so closely the three principal owners of timber lands—the national government, state government, and the private owner. Take away any of these three and it is much the same as taking away one of the legs of the stool. From then on it does not successfully serve the purpose for which it was intended and is badly out of balance. But, of course, it is only human nature for us to think more in terms of our own selfish interests than to give an equal amount of thought to other factors which may not be quite so close to us but which nevertheless are just as important.

For this reason I am going to confine my comments exclusively to the subject assigned for discussion although I realize full well that the commercial lumberman should not consider forestry from an entirely selfish angle. There are far too many complex factors involved—too many overlapping problems—too many questions in economics to be solved—too much intermingling of varied and mutual interests. In other words the commercial lumberman is by no means a thing unto himself.

I fear that many of our major problems in forestry are caused by the fact we are often inclined to look upon some single phase of the subject which may happen to be of special interest to us instead of considering it from its

many important aspects. It perhaps is only natural that the politician, or the economist, or the private owner each should have his own particular axe to grind but after all it is only when all parties concerned have a mutual understanding of the many problems involved and are willing to recognize them that forestry can attain its innumerable objectives.

Before I get into a discussion of the subject I wish to pay such tribute as I am able to the fine work that is being done in our forestry schools and to attribute to them the better understanding that the public now has of the whole situation as regards our national and privately owned forests. There is still a long distance to go but when we check back over the past twenty-five years we must come to the unmistakable conclusion that we have made much progress during that time. It goes without saying that through such educational channels alone will we come anywhere near approaching the goal for which we are struggling for I have small hope that we shall ever be able to accomplish a great deal by the passage of laws which are too often formulated for political purposes rather than for economic reasons.

More power to the schools and to the students who are devoting so much time and attention to this big subject—one of our greatest national problems.

Now so far as the commercial lumberman is concerned I suppose I might as well start out by claiming that he is usually a much misunderstood individual, at least as far as the public is concerned.

I talked recently with one of our good citizens who was inclined to twit me a bit because I happened to be a manufacturer of lumber and was rather proud to admit it. He, like many others, had the rather vague impression that the commercial lumberman was nothing more or less than a despoiler of a great natural resource which would still remain intact had they not been destroyed by the hand of man.

I never really thought of it in that way at all for the very simple reason that if forests are not utilized by mankind they eventually destroy themselves. There then remains merely the choice between two courses. We must make good use of the trees or permit them to die of old age or be destroyed by fires, insects, diseases and the several other agents which contribute to their untimely end.

Personally I like to think of the forest as a crop which must be cut when it is "ripe" in order to serve the best interests of our citizenry. I know that this theory does not exactly square up with the thinking that is done by the average citizen who usually points out that grain crops grow again but that timber crops do not which is exactly the thing I want him to say!

Trees will grow again, too, just like any other crop but they will not grow

without considerable attention. That this attention is not often forthcoming is not really the fault of the commercial lumberman, who having garnered one crop, would like nothing better than to harvest another.

I do not suppose that there has been any phase of lumbering that has interested me as much as growing the second crop of trees and it has always been a source of deep regret to me that our tax laws for one thing, could not long ago have been adjusted so that they would encourage reforestation rather than making it impossible, for it goes without saying that the private owner cannot pay taxes annually upon a crop that requires one hundred years or more to mature. Nor are the annual taxes the only financial burden. There must also be taken into consideration the high cost of constant protection against fire, insects, tree diseases and other hazards.

The commercial lumberman therefore welcomes a better understanding of why he is often forced to cut his timber whether he is ready or not—why he cannot postpone harvesting a crop that is already ripe—why he can no longer pay taxes and come out even.

I suppose most commercial lumbermen are a good deal like I am when it comes to naming their chief interests in forestry programs and my hobby happens to be "sustained yield."

Much progress has already been made in the direction of sustained production in forest resources but it is

only my personal opinion that as yet, we really have not scratched the surface.

It is encouraging to note the widespread interest in the various factors which contribute to selective logging; the attention that is being paid to forest protection during logging; the cooperation that exists in protecting forests against fire, insects, and diseases; the conservation of immature trees and young growth; the provisions being made for restocking the land after cutting.

Recently I attended an important meeting of commercial lumbermen where these topics were the chief order of business—where there was very evidence of an intense desire on the part of everyone in attendance to cooperate to the fullest extent in furthering the programs which had been set up to attain these worthy objectives.

It is not possible for me to discuss, in this brief article, the ways and means for carrying out such programs. Each and everyone of them involve many serious problems but the thing that is most encouraging is the fact that something is actually being done about it.

That, of course, brings me back to the part that our forestry schools are playing in the entire movement. Where would the lumber industry be today and how long would it continue to serve an important part in our economic life without the specialists who are being developed to meet our countless special problems.

Need I, at this time, elaborate on the importance of conserving and per-

petuating our forest resources while at the same time intelligently harvesting the crops that are mature?

Do you know of any natural resource that plays an equally important part in our national existence? How long could we survive as a nation without wood? You know the answer.

What then can be more important to us as a nation that a full understanding of the whole subject of forestry—a greater appreciation of the part that advanced forestry is to play in our future well being.

My interests in forestry are therefore greater today than ever before because I am so sure that we are only now beginning to know how to make the most of wood and to perpetuate our national supply.

In closing let me quote from a recent report made by Wilson Compton, Secretary and Manager of the National Lumber Manufacturers Association in which he sums up some important conclusions that cause him to make the assertion that "wood is capable of being made the most universally useful of the materials of industry." Here they are:

1. Wood is easily and perpetually renewable. An organic material,—it has many important and basic advantages over the inert, inorganic and irreplaceable materials which are now its principal competitors.
2. Progress is steadily being made toward establishing security of

forests from fire; and substantial headway toward immunizing forests against insect scourge and tree diseases.

3. Researches already made indicate important possibilities in the effective encouragement of growth of the more desirable tree species and the suppression of the less desirable.
4. There are large possibilities of improving natural forest growth and the development of tree varieties which may combine the superior use characteristics of slow-growing species and the growth characteristics of fast-growing species.
5. Sawn lumber, generally speaking, in the select and higher common grades is holding its own. Low grade lumber to a large extent is destined to refabrication, small dimension cutting and ultimately to wood pulp and wood chemical conversion.
6. The modification and control of wood properties through chemical impregnations and treatments indicate possible restoration on a large scale of former uses and a wide diversification of new uses for lumber and wood products.
7. We are entering upon an age of cellulose. It promises an industrial "Battle of the Giants" in the next quarter of a century. The winner will likely be determined largely by the extent of success of science and its laboratories in mastering the mysteries of cellulose and lignin. The dramatic his-

tory of American industrial chemistry when chemists learned the secret of the "benzene ring" and industry learned how to apply it may find in wood a Twentieth Century parallel.

8. Cellulose in the form of wood may be produced readily throughout the United States and evidently at a much lower cost than cellulose in any other form. Conceivably wood may eventually supplant cotton.
9. It is true that at present 60 per cent of the standing tree is not commercially utilized. It is true that the lumber industry, under that handicap, losing valuable and costly materials, and confronted with the early necessity of conserving and regrowing them, cannot be expected permanently to maintain a strong position in competition with other industries more efficient in the conservation and use of their resources. But it is also true that the permanent status of the lumber industry will not be determined until science and industry together, and much more extensively than has heretofore been done, shall have explored the possibilities of improved utilization of wood.
10. The financial motive power in the lumber industry—and heretofore its source of greatest profit—has been the increase in the value of standing timber. Hereafter improved utilization and more efficient distribution must be looked to



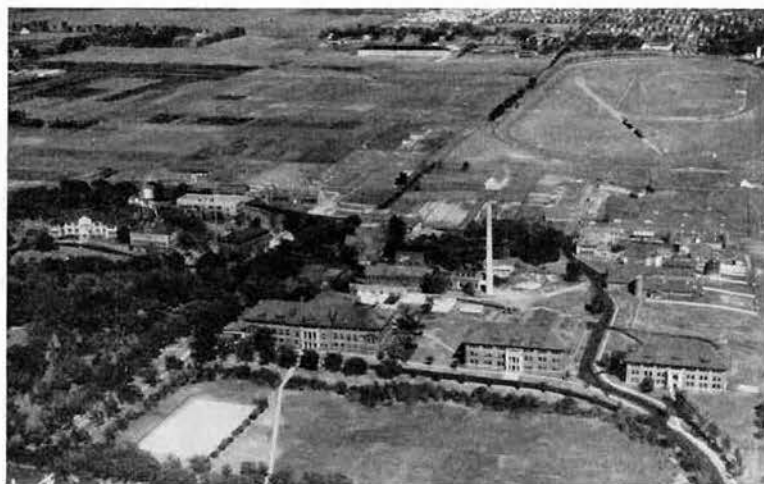
as the principal and dependable sources of profit. The lumber industry is aroused to this fact and it is already on the march. Those who have relegated the lumber and wood-using industries to early commercial discard, have in my judgment reckoned without their host.

"If, as they can be, the objectives of which I have spoken are accomplished—and science alone can pave the way—we will have made secure a wide range of markets and uses for wood products; greatly enhanced the value of standing timber, the West's greatest natural resource; established the only effective economic incentive to reforestation of timber lands by private enterprise; insured a valuable, permanent, productive

use to one-fourth of the land area of the United States, and—what is more—vastly increased the opportunities for profitable employment to millions of the American people."

"Such opportunity for the advancement of science and for constructive economic service should be a challenge to American science and American industry alike. If science will lead the way, industry will follow."

Such being the case the commercial lumberman cannot help but be vitally interested in all phases of the vast subject of forestry and the splendid progress that is now being made in solving many of the problems which are the direct result of a lack of understanding in the past.



*Aerial View of University Farm*



BIRCHES

*The night is white, the moon is high  
The birch trees lean against the sky.*

*The cruel winds have blown away  
Each little leaf of silver gray.*

*O lonely trees as white as wool  
That moonlight makes so beautiful.*

JOHN RICHARD MORELAND

## SOME PRACTICAL ASPECTS OF FORESTRY EMPLOYMENT

By Franklyn T. Fredrickson, '31

The employment of professionally-trained foresters in the United States is on the increase. How long this situation will exist we do not know but this seems to be an opportune time to attempt to analyze some of the more practical phases of the forestry employment problem in the light of past, present, as well as possible future developments.

It is of particular importance to prospective graduates of the forestry schools to have some idea of what their employment possibilities will be, as well as to have some knowledge of the problems which will confront them upon entering such employment. Being well aware, from my own experience, that a few suggestions at the proper time might help to better define the path that some of the future foresters may choose to follow, I will discuss some of these problems and their possibilities. From my own undergraduate days I recall some helpful advice, passed along by some of my predecessors, which affected to a great extent some important decisions with which I have since been confronted. It is not, however, with the idea of profoundly affecting the course that any prospective graduate expects to pursue that I write these few words, but merely to record some impressions from my own experience which may or may not prove helpful.

Being one of the "depression" graduates of the class of 1931, I am well aware of the fact that forestry is

not primarily a financially remunerative profession, which fact was forcefully brought home to myself and to most of my former classmates upon graduation. In those days, and prior, the deciding factors which influenced a man in choosing the forestry field was not primarily "How much will it pay?", but, "Can I make a living in a job that I thoroughly enjoy and in a profession which I thoroughly believe is essential to the orderly development of the resources of this country?" I do not mean to imply that the motives of any or all of the students of those days was of an unselfish or altruistic character. In fairness, I should state that many of us so believed in the future of the profession, particularly in the light of experience in other countries, that we wanted to "be in on the ground floor" when the profession of forestry "came into its own." Again in fairness, few of us had the slightest inkling that the break would come as quickly as it did. The fact remains that within two years we found ourselves in a peculiarly fortunate position due to the rapid expansion in public forestry work. That graduates of the future will also find such a fortunate employment condition is doubtful but whether they do or not I still believe that any men entering the field of forestry today should recognize the present limited financial possibilities and give consideration to the other factors which add usefulness and enjoyment to work in this field.

The forms that the rapid expansion in public forestry work took are well known to all of us and I will only touch upon them as they relate to the general theme of this discussion. They include: the expansion of the National Forest system; the organization of the Civilian Conservation Corp to conduct Emergency Conservation Work; The Plains Shelterbelt Project to conduct afforestation work in some of the mid-western plains states; the inauguration of cooperation with the lumbermen under the NRA lumber code; the passage of the Fulmer Act providing for Federal cooperation with the States in the acquisition of State Forests; and the establishment of new State Forests.

The above projects, most of which were established under stress of the emergency to provide jobs for the unemployed, created an unprecedented demand for technically-trained foresters. This demand could be only partially met by hiring all trained foresters regardless of their respective abilities or qualifications, and by taking all forestry graduates as quickly as they graduated from the schools. The demand even went deeper than that by taking undergraduate forestry students with three, two, and even only one year of training for some types of forestry work.

For those undergraduates who secured work this was both an opportunity and an evil. It delayed the finishing of the man's technical education but the experience gained, by the right type of man, was invaluable and would consequently increase the

value of the balance of his college work. In a measure, the experience made up for the opportunity which used to be afforded to forestry students, by the U. S. Forest Service, of working in the National Forests of the West during the summer fire seasons. It was also a test of a man's fitness for forestry field work and a chance for him to determine whether it was a career he wished to continue to follow. A man unfitted for the work was eliminated with the consequent saving to himself and to the State for his training. No doubt, however, the value derived from some practical experience concurrent with college work has numberless advantages.

For forestry graduates to step from school into a well-paying job is an excellent thing. However, from my experience, the tendency is for many of these graduates to be prone to accept this treatment as the general thing without evaluating the factors which have made such a situation possible. The pressing demand for trained men brought about by the increase in public forestry expansion was such a factor. Under these conditions the forestry graduate tends to consider himself a finished product and to overestimate not only his own ability but also his importance as a technically-trained man. This is probably a natural tendency when even undergraduates are in demand but when such is the attitude the awakening which inevitably comes is always liable to be painful. It is well, therefore, for the graduate, when he enters upon a job, to do so with the knowledge

that he has acquired the foundation upon which a successful forestry career can be built, but that he must also acquire sufficient practical knowledge to enable him to apply his theory to the best advantage. Until this practical knowledge is acquired by actual experience in the field a man's usefulness is limited, regardless of what his scholastic attainments might have been. The one great advantage that a technically-trained man holds over the so-called practical man is the greater ease of acquiring a practical education as against the difficulties that a practical man encounters in attaining a technical foundation.

Following this same line of reasoning, in my opinion what the profession of forestry is in crying need of at the present time is trained men who have acquired the practical ability to translate theoretical knowledge into actual practice in the woods. Although we have advanced rapidly during the years that forestry has been recognized in this country we have not yet advanced to the stage where specialized knowledge alone will suffice if we are to develop sound policies and programs upon which the future of the profession will be based. To build these policies and outline these programs men are needed who have not only a broad technical forestry background but who have also a good working knowledge of woods practices.

As an illustration, I feel, from past experience with the Civilian Conservation Corp, that we, as foresters, passed up many opportunities of materially

adding a great deal to the value of the Emergency Conservation work conducted through the C. C. C., simply because we lacked trained men who had the practical background to apply technical knowledge in the woods. This is nowise a reflection on the value of the Emergency Conservation work, which has contributed immensely to the advancement of woods practices in this country, or on the forestry schools which have not the facilities for supplying a great deal of practical work. Also, the chances of a forestry graduate to obtain practical experience during the depression years prior to 1933 were extremely limited, so the situation was, in a large measure, unavoidable.

The point I am trying to make clear in this discussion is that every young forester should seize every opportunity to gain practical field experience and should be willing to do so even at some present sacrifice, regardless of whether his prospective field be Forest Administration, Forest Research, Industrial Forestry work or associated fields. A working knowledge of all branches of forestry is essential if we are to sufficiently correlate the various activities within the profession to place it on a sound basis. Specialization will no doubt increase in the future but at the present time, and particularly in Forest Administrative work, there will be a bigger place for the man with the widest range of experience in the whole field, and the initiative to put this experience to the best use.

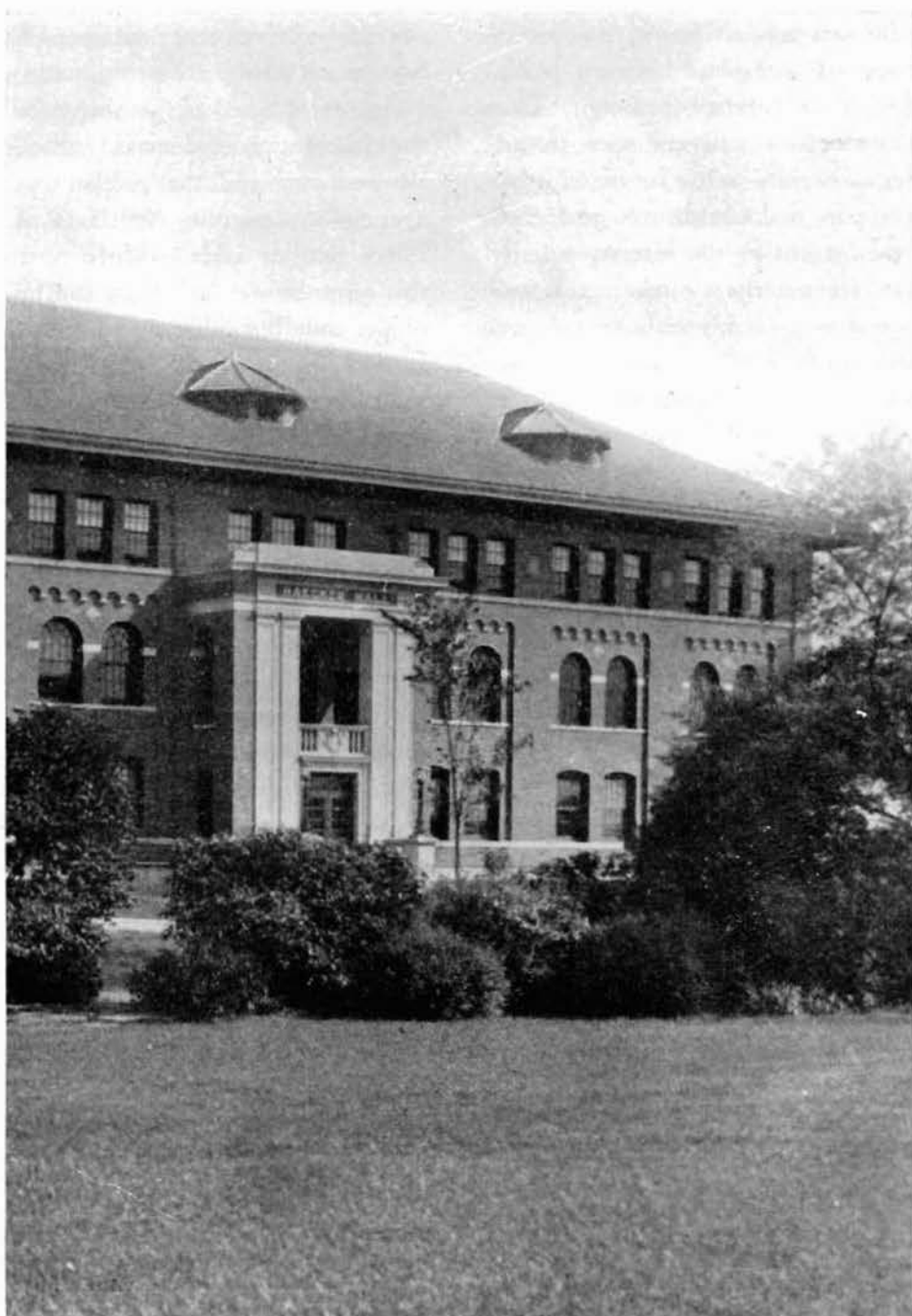
Another question which I am sure is of interest not only to the graduates

and men in the field, but which will have a profound effect upon the future of some of the men now enrolled in the forestry schools, is the question of division of enterprise between public and private forestry activity. That public forestry will continue to advance as rapidly in the future as it has in the past is doubtful. A great deal of the current public forestry activity is of an emergency character and hence it is probably only temporary. How much forestry work, in the future, will be depended upon to take up slack in employment we do not know but some retrenchment in these current activities seems imminent. When such retrenchment comes will there still be jobs enough for all the technically-trained foresters, together with the increasing numbers of men being turned out by the forestry schools every year? I think that, unquestionably, unless we see an increase in private forestry enterprise in this country in the near future the answer will be no. Without such an increase in this field it seems fairly certain that the forestry profession is again headed for slack times in the employment of trained men, and that the men who flocked to the forestry schools of the country under impetus of the latest advance that forestry has made, will be doomed to disappointment when the time comes for them to practice their profession. It therefore behooves all men interested in the future of the forestry movement, and this definitely in-

cludes the undergraduates, to support all measures designed to enlarge the field of private forestry enterprise and put it on a secure and permanent basis. Some such efforts are being made with a degree of success, as witnessed by the cooperation evidenced by the lumber industry and the public forestry agencies in designing Article 10 of the NRA lumber code. Unfortunately, this advance was halted by the failure of the code but other measures will be forthcoming which will need and merit the support of all foresters and all prospective foresters.

In the past, the tendency has been for forestry graduates to scramble for Government jobs, probably with good reason as they were the only ones in sight. However, some of the future graduates will almost certainly be forced to choose the field of private forestry enterprise which, after all, may hold just as big a future for the trained man. In the light of this possibility it would be well for some of the undergraduates to look forward to entering this field, which, I believe, holds a great deal for technical foresters.

In conclusion, I still see much promise in the field of forestry for men of ability and determination, in work which is, in itself, a lasting monument to those who engage in it. May we continue to have men entering the work who will uphold the highest traditions of the profession.



HAECKER HALL

## LIGHT FROM THE DARK CONTINENT

*A story, gleaned from letters of the experiences of two Minnesota foresters who journeyed to Africa to work for Firestone—the names are fictitious.*

At 1:00 P. M., December 16, 1935, our well-beloved pals, Vick and Ole, boarded the Chicago bound fast train, the Hiawatha. This hour of parting robbed the gang of that most hilarious of occasions, "pouring" pals on the train, an ancient custom which usually takes place when anyone gets called away for a job. It was just as well for Vick and Ole, however, for in just six hours they were in the Windy City. A pullman took them to Akron, where they were subjected to a rigid physical examination, given by the Firestone medical staff.

Mr. Firestone, Sr. was called upon. He asked for the number of square miles in 10,000 acres. The boys came thru with flying colors, whereupon Mr. Firestone wished them a good trip and the best of luck. Due to lack of time they were unable to visit the rubber plant, which in this case means the factory, not *Hevia sp.*

That evening the train for New York was caught. Night found Vick and Ole pounding the pillow, so many miles of Appalachian scenery was missed. They did see some of the tall buildings in New York and were impressed by the tough cab drivers.

At midnight of the 18th they set sail for Hamburg, Germany aboard the S. S. Deutschland. The trip over

was very pleasant; it was a real thrill to be at sea. Among the passengers were the Don Cossacks and Jan Bledsoe, the great colored singer. Bledsoe entertained the Americans aboard on Christmas night with his powerful voice. Among the amusements aboard were ping-pong, where the boys showed how the hours spent in the Union had not been wasted, shuffle deck, horse shoe, which they should have been good at, swimming, card playing, movies, dances, concerts and beverages. It sounds like a continuation of college life, with the bad features left out. The Deutschland stopped at Cherbourg, France, for a short while and then crossed the Channel to Southampton, England. Their first glimpse of the chalk cliffs of England impressed them no end. The ship did not enter the harbor here, but a tender came alongside. Many passengers got off, and a few got on.

Twenty-four hours later they sighted the shores of Germany. On docking at Cuxhaven the German national anthem was played by the ship's band, whereupon all the Germans aboard and on the dock took off their hats and extended their right arms at 50 degrees from the horizontal. Yes, it was rather impressing. Going thru customs in Germany was a long and hard fight. Everyone entering had to produce his money and sign on the dotted line. From Cuxhaven a special train for Hamburg was boarded and in two hours the Minnesotans were gaz-



ing at the many uniforms in the streets of that city. After bathing, dining, and having a few beers at the best hotel in town they were ready to sally forth and paint the town red.

The first night club turned out to be too ritzy for our boys so they cleared out. They finally ended up in the famous Saint Pauli district, which is said to be the greatest amusement center for rough and tough sailors in the world. The boys found the saying to be true. One place, a classy night club, had a technique all its own. It would have put Washington avenue or St. Peter street to shame. The boys no sooner sat down than the table telephone rang. Upon the lads answering it, a sweet, feminine voice was heard. What were they to do? Yes, our two dashing foresters were really perplexed. (Did I hear somebody mutter, "Oh yeah?")

Hamburg was left behind December 29 (none too soon I'll bet) and the boys steamed for Holland, which was reached in 24 hours. They saw the locks at the mouth of the Amsterdam which are supposedly the greatest in the universe. In Holland they were reminded of the campus by seeing a lot of little Pete Schufts riding bicycles. Bicycles were everywhere—people used them for trucks, for baby carriages, for anything a fellow could imagine. They even make love on them. Couples holding hands riding nonchalantly along was a common sight. (Well, hell, Vick, you can't do much more than that in a rumble seat.) In Amsterdam they spent their

time dodging said bicycles and viewing the Rembrandts displayed at the museum. New Year's Eve, well, well, well—and here they were in a strange country wondering what the boys back home were ordering up. They found, however, that the coming of the New Year is observed in the same way the world over. The boys advise us, next time we're in Amsterdam, to stop in at Tuschinski's, tell the manager we know the two rogues from the U. S., and we'll have a bally good time, either there or in jail.

A couple more days at sea, and then Bordeaux, where the contrast in clothing, manners, and customs surprised them, and they learned why some of the soldiers did not want to return to the U. S. A great time was had in trying to make the waiters bring ice-cream. How the hell do you say "ice-cream" in French anyway?

The trip from Bordeaux to Las Palmas was splendid. The ship had an accommodating bar, the weather was nice, the sea smooth, the passengers amusing and the food plentiful. The only thing not up to par was the coffee, which was "lousy."

Las Palmas, a Spanish possession and the pleasure resort of the wealthy, was found to be quite modern, with street cars, electric lights, automobiles, etc. It even had veiled women, but as the stop here was short the boys are still wondering what the women really looked like.

A few days more and lo! Africa in all its splendor. Dakar, Senegal, was

the first real sight of the Black Belt. Hordes of black people lounged about in the narrow streets waiting for it to rain. They entertained the Americans with some of the latest song hits, "Yes, We Have No Bananas," and "It's A Long Way To Tipperary." The next stop was the English speaking town of Freetown, Sierra Leone, where the boys had their last ice cream—3 dishes in a row. Next day their goal, Liberia, was reached. Such a sight! The ship was boarded by every black boy in Liberia, 2 million of them, according to Ole, who used some timber cruising methods, Vick acting as Tally man. Surf boats were everywhere, also official launches. After a great deal of fussing they finally disembarked in a surf boat manned by 20 blacks. Monrovia, the capital city, is a teeming metropolis that boasts of one bank, 3 or 4 stores, the presidential mansion, postoffice, and batch of mud huts. The streets are just good cow paths. The Firestone Rubber plantation is about 30 miles from Monrovia by a road that would even make walking difficult.

The first night in Africa was strange. Every sort of sound imaginable was heard. It seemed as if all the insects and birds in the country were heralding the arrival of the two foresters.

The boys now hold hands. Each has had a touch of malaria, but on the whole they find the climate not so bad. Sun helmets are necessary, but there is usually a breeze which makes life easier. They seem to be learning the "pidgin" English of the country, as

their letters are full of words like "chop," meaning food, "palaver" which seems to have a score of uses, and the fine old English word, "Bloody." There is plenty of game to hunt. Already they have bagged a red deer, and are going out after bush cow (dwarf buffalo) soon. These are about as tough and vicious as anything in the country, according to reports, so let us hope their first shot is well-placed.

The boys work from 7 to 11 in the field and from 11 to 1 P. M. in the factory. Afternoons are usually free. The work is mostly supervising the tapping of rubber trees. There is sort of an organization whereby each headman has from 20 to 23 boys working under him. Then every 5 headmen have an overseer. Half of the job is getting proper headmen and overseers and then seeing that they work. Besides that, they have boys working on thinning, weeding, pruning as well as a group of factory boys. When there are plenty of boys, the payroll carries as many as 500.

Vick, who was a demon Peavey salesman while in school, complains that so far he hasn't talked a single black boy into buying a copy. He says they're harder to sell to than a freshman forester. When Vick and Ole get their copies this year, I expect a deluge of orders from several hundred blacks in Liberia. (This remark was made absolutely free of charge. We do not solicit testimonials. Ed.)

## FOREST INSURANCE

By A. Z. Nelson, '31

Insurance is recognized as an essential element of modern business and is now so important as to be practically indispensable in the proper conduct of most enterprises. Forests are one of the few forms of property in this country that do not enjoy the numerous advantages inherent in insurance. Industries that are dependent on their forests for raw materials must therefore operate on a margin or reserve commitment sufficient to cover the risk. They must do this individually with no hope of sharing losses through a systematic distribution of risk, since in the past forest insurance has been obtainable only at prohibitive premium rates. Risk from fire and other causes is said to be one of the

obstacles deterring private enterprise from incorporating sound forestry principles in their activities.

It is claimed that practical forest insurance would facilitate credit for forest industries, would help to discourage quick liquidation of the forest capital, would tend to bring additional acres into timber production and thereby broaden the tax base, and would serve as an incentive for better fire protection in order to lower the premium rate. Forest insurance covers that portion of the total risk which cannot be eliminated by protection measures—it lightens the burden of catastrophic loss to the individual.

There are a number of reasons why sound forest insurance underwriting



*"Substantially aiding the building-up of sustained-yield forestry and the stabilization of forest industries."*

has not become a reality in this country. First, no one has known the true loss costs resulting from fire and other damage to standing timber—no comprehensive loss studies have been made to determine such essential facts except in connection with a small amount of insurance written more or less experimentally in the New England States. Actuarial data were almost completely lacking. As a consequence potential insurers were unwilling to assume an unknown risk or, if they did, underwriting was done only at excessively high rates. A second reason may be that insurers are unfamiliar with the solution of problems peculiar to forest insurance underwriting. These include problems relating to the business structure, rate schedules and premiums, nature of the risk, causative and contributive hazards, contracts, loss adjustments, conflagration commitments, and general accounting procedure. A third reason is the problem which underwriters face in attempting to ascertain the amount of business which they may feel reasonably sure of obtaining. Insurance is based on a wide dissemination of risk among a large number of policy holders and, obviously, unless there is reasonably accurate knowledge of potential demand, underwriters are skeptical of introducing a new business. Timberland owners have not shown an active enough interest in forest fire insurance, and this has been one of the reasons for excessively high premium rates on the limited insurance that has been offered. A fourth reason lies in an unfavorable economic

situation in which the returns to stumpage are relatively low, and the owner feels that his values at risk are not great enough to warrant his insuring them against loss.

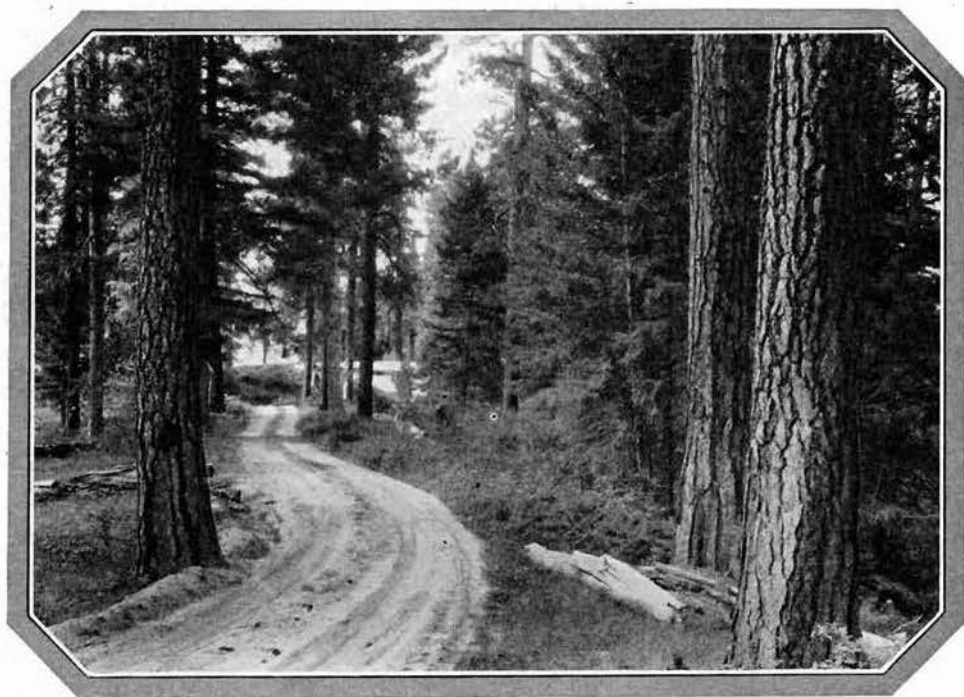
A very important phase of the forest insurance problem is a study of true loss and the proper adjustment of such loss between the assured and the underwriter. The problem is complicated by the fact that loss is hardly ever total, since all the standing timber is rarely killed by the fire and possibilities of subsequent salvage frequently remain. Another complicating feature of loss adjustment is presented by the progressive deterioration and dying of the stand for varying periods after a fire, due to the work of insects and disease, so that the problem of arriving at an estimate of true loss is intensified. The destruction, partially or wholly, of other values such as soil fertility inherent in a forest property apart from the value of the standing timber itself may require consideration. It is recognized also that young forest stands present a distinct problem to the underwriter because of the difficulty in case of loss of determining a true value as a basis for making loss adjustments. The market value of such forests is usually considerably less than the present worth of expected future net incomes discounted at a reasonable rate of interest.

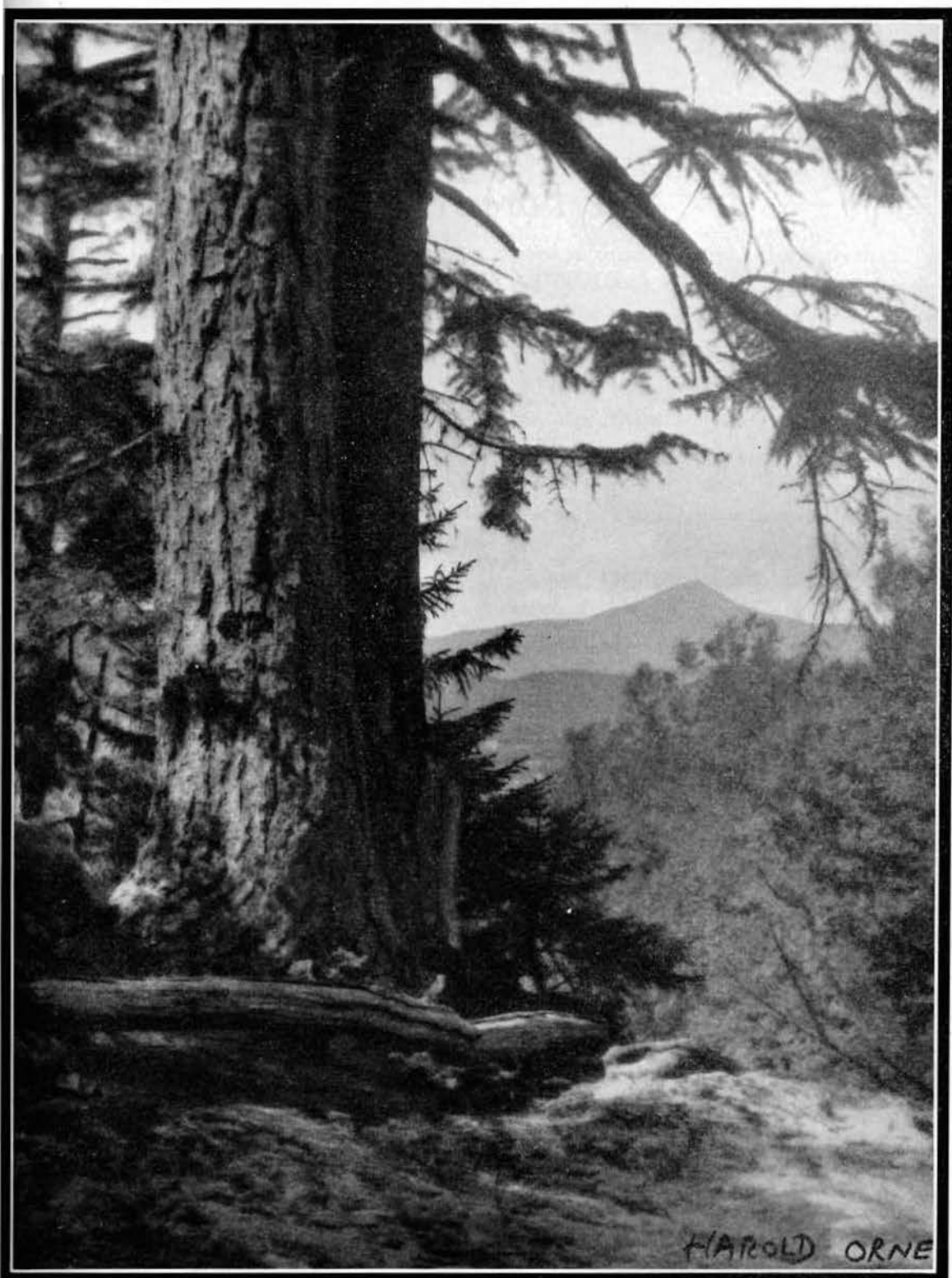
A comprehensive forest insurance study has been completed by the United States Forest Service on the Pacific coast, and a similar study is now under way in the New England States. The Pacific coast study finds

that the loss situation is not prohibitive to practical forest fire insurance and that there are no insurmountable difficulties from the underwriting standpoint.<sup>1</sup> It is commonly known that forest fire insurance has been successfully applied to European forests for many years, and it has probably reached its greatest development in the Scandinavian countries. The fact that forests, for the most part, represent a low risk for purposes of fire insurance has not been generally accepted by insurance underwriters in this country. As protection measures improve and broaden in scope, loss costs will de-

crease in proportion. When insurance companies begin to realize that forests offer a good insurable risk and show appreciation of the potentialities of this vast new field for insurance, and when timberland owners in turn exhibit an active interest reflected by a large demand for coverage; then we may logically expect forest fire insurance to be offered at reasonable premium rates. Insurance should then offer a means of substantially aiding the building-up of sustained-yield forestry and the stabilization of forest industries.

<sup>1</sup> H. B. Shepard. *Forest Fire Insurance in the Pacific Coast States*. To be published.





*School Activities*

## The Forestry Club

### FORESTRY CLUB OFFICERS

EARL ADAMS	-	-	-	-	-	-	-	<i>President</i>
ONNI KOSKI	-	-	-	-	-	-	-	<i>Vice-President</i>
ALVIN NELSON	-	-	-	-	-	-	-	<i>Treasurer</i>
JAMES HENDERSON	-	-	-	-	-	-	-	<i>Secretary</i>

### GOPHER PEAVEY BOARD

FRANK H. KAUFERT	-	-	-	-	<i>Faculty Representative</i>
RALPH W. LORENZ	-	-	-	-	<i>Alumni Representative</i>
ALVIN NELSON	-	-	-	-	<i>Sophomore Representative</i>
PHILIP SCHROEDER	-	-	-	-	<i>Junior Representative</i>
SULO SIHVONEN	-	-	-	-	<i>Senior Representative</i>



## Members of the Faculty

### UNIVERSITY OF MINNESOTA SCHOOL OF FORESTRY

HENRY SCHMITZ  
EDWARD G. CHEYNEY  
JOHN H. ALLISON  
T. SCHANTZ-HANSEN

LOUIS W. REES  
FRANK H. KAUFERT  
RALPH W. LORENZ  
HENRY L. HANSEN

RANDOLPH M. BROWN

FORESTRY CLUB



CHIPS: The traditional fall quarter bonfire, welcoming incoming freshmen, with hot dogs, cider, and repartee as accoutrements, revealed the fact that the freshmen surpassed the seniors in number, brawn, and story-telling capacity . . . An attendance of 500, not counting the members of the floor show, made the last fall dance a success—the spring shindig is slated for the 22nd of May.

Disdaining the distinction University-won titles would give him, Walter Paul, light heavyweight stepped out and took the Golden Gloves and Northwest Diamond Belt champs from a tough field of contestants . . . remember that . . . and, to “top it all” he captured the Greene scholarship award for seniors! Gene Hurley, middleweight, took the all-U title last winter. Dick Beveridge, and Ed Sedlacek, punched their way to runner-up posi-

tions in their divisions. In basketball, our team took the all-U, B-class championship . . . for which they received medals to flaunt in our faces.

Homcoming: Evidently, with a Paul Bunyan theme, “Whipsaw Northwestern,” foresters should have placed first in the float parade. The reason that such was not the case is explained thru the lack of knowledge of parade judges—for who should know Paul better than the sons of Paul . . . . a monstrous concoction of sawdust and gunnysacks, sprouting fragile paper wings to represent a gargantuan Bunyan mosquito in the process of withdrawing the “life blood” from a Northwestern wildcat constituted the foresters display.

Officers for next year: Alvin Hagen, president; George Biskey, vice president; James Kimball, treasurer; and Alvin Nelson, secretary.



*Forestry Club Float  
Homecoming 1936*



## Seniors



EARL J. ADAMS  
"Smoky"

Minneapolis, Minnesota  
*General Forestry*

Tau Phi Delta; Forestry Club President, '36; Y. M. C. A. Cabinet Secretary, '36; Son of Paul, '36; Gray Friars; Silver Spur; Junior Corporation President, '35; Forester's Day Association, '35, '36; Gopher Peavey, Business Manager, '35; Ag Student Council, '34; Freshmen Corp. President '33; Gobblers; Summer Work, Snoqualmie National Forest, Washington, '34.



DONALD AMBROSEN  
"Toasty"

Winona, Minnesota  
*Game Management*

Forestry Club; Alpha Gamma Rho; Y. M. C. A.; Summer Work, Superior National Forest, '34.



GEORGE B. AMIDON  
St. Paul, Minnesota

*Game Management*

Forestry Club; Alpha Zeta, Intramural Basketball; Summer Work, Lake States Forest Experiment Station; Forest Survey, '34, '35.



HERMAN ARLE  
"Haupt"

Norwood, Minnesota

*General Forestry*

Forestry Club; Y. M. C. A.; Tau Phi Delta; Gobblers; Forester's Day Association, '36; Summer Work, Snoqualmie National Forest, Washington, '34.



MORLEY F. BRANDBORG  
"Brandy"

Henning, Minnesota

*General Forestry*

Forestry Club; Xi Sigma Pi; Voyageurs; Colorado College; Summer Work, U. S. F. S., Kootenai National Forest, '30; Unconpahgre National Forest, '31; Pike National Forest, '32; Rio Grande National Forest, '32; Technical Foreman, C. C. C., Harney National Forest, '33, '34, '35.

JAMES CASE  
"Jim"

Minneapolis, Minnesota  
*General Forestry*  
Forestry Club; Tau Phi Delta.



SIGURD DOLGAARD  
"Sig"

Kelliher, Minnesota  
*General Forestry*  
Forestry Club; Xi Sigma Pi; Alpha Gamma Rho;  
Summer Work, Minnesota State Forest Service, '33;  
George Washington State Forest, '35.



HERBERT ERICKSON  
"Scoop"

Minneapolis, Minnesota  
*General Forestry*  
Forestry Club; Y. M. C. A.; Tau Phi Delta; Xi  
Sigma Pi; Gobblers; Gopher Peavey, Business Man-  
ager, '36; Minnesota Daily, '36; Forester's Day  
Association, '35, '36; Summer Work, Superior Na-  
tional Forest, '34.



TOM R. EVANS  
"Barber"

Kasson, Minnesota  
*Game Management*  
Forestry Club; Alpha Gamma Rho; Xi Sigma Pi;  
Summer Work, Lake States Forest Experiment  
Station, Forest Survey, '34, '35.



JAMES HENDERSON  
"Jim"

St. Louis Park, Minnesota  
*General Forestry*  
Forestry Club; Y. M. C. A.; University Band, '33,  
'34, '35, '36; Tau Phi Delta; Forester's Day Associa-  
tion, '35, '36; Summer Work, Superior National  
Forest, '34.





JAMES H. HOVIND  
"Jim"

La Crosse, Wisconsin  
*General Forestry*

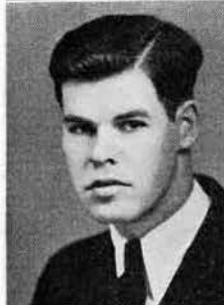
Forestry Club.



EUGENE HURLEY  
"Pug"

St. Paul, Minnesota  
*General Forestry*

Forestry Club; Boxing, '33, '34, '35, '36; Forester's  
Day Association.



ROBERT ILG  
"Bob"

Manitowish, Wisconsin  
*General Forestry*

Forestry Club; Alpha Gamma Rho.



RAYMOND JASKOVIK  
"Ray"

Silver Lake, Minnesota  
*General Forestry*

Forestry Club; Summer Work, Snoqualmie National  
Forest, Washington, '35.



KARL A. JACOBSON  
"Karl"

Eagle Lake, Minnesota  
*Forest Sciences*

Forestry Club; Freshman Corporation, President, '35;  
Xi Sigma Pi.

IRWIN H. JOHNSON

Onamia, Minnesota

*Grazing*

Forestry Club; Xi Sigma Pi; Alpha Zeta; Summer Work, Blister Rust Control, Elk River, Idaho, '31; Range Research, Intermountain Range and Experiment Station, Ogden, Utah, '32; Range Research, California Forest and Range Experiment Station, Berkeley, Calif., '33, '35.



KARL G. KOBES

*"Kobes"*

New Bedford, Mass.

*General Forestry*

Forestry Club; Summer Work, Chippewa National Forest '33, '34; Chequamegon National Forest, '34; Game Management, Massachusetts State Forests, '34 '35.



ONNI KOSKI

International Falls, Minnesota

*General Forestry*

Forestry Club; Tau Phi Delta; Gobblers; Peavey Subscriptions Chair, '35; Ag Student Council, '34-'35; Wrestling, '34, '35; Football, '34, '35; Summer Work, Pulp and Papermaking, International Falls, '33, '35.



WARREN H. LIVENS

*"Red"*

Chisholm, Minnesota

*General Forestry*

Forestry Club; Tau Phi Delta.



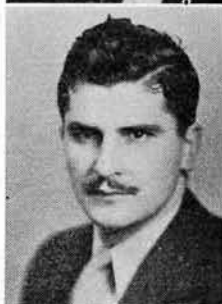
WILLIAM J. MAJOR

*"Bill"*

Eureka, Illinois

*Game Management*

Forestry Club; Tau Phi Delta; Chairman Foresters Day, '35; Son of Paul, '35; Honor Case Committee Chairman; Summer Work, Lake Survey, Zoology Department, '35.





LEIGHTON NELSON  
"Nels"

Burtrum, Minnesota  
*General Forestry*

Forestry Club; U. S. Forest Service, Idaho, 1928;  
Blister Rust, Washington, Idaho, '29, '35.



URBAN C. NELSON  
"Pete"

Cokato, Minnesota  
*General Forestry*

Forestry Club; Tau Phi Delta; Gobblers; Foresters  
Day Association; Ag. Students Council, '35; Vice  
President, Students Council, '36; Summer Work,  
Glacier National Park, '32, '33; Chippewa National  
Forest, '33; Minnesota Forest Service, '34; Soil Con-  
servation Service, La Crosse, Wisconsin, '35.



RAYMOND C. NERMÖE  
"Red"

Upham, North Dakota  
*General Forestry*

Forestry Club; Tau Phi Delta; Summer Work, State  
Forest Nursery, North Dakota, '34; Denbigh Dune  
Branch Experiment Station, Townes, North Dakota,  
'34.



MYRON OSTRANDER  
"Mike"

Minneapolis, Minnesota  
*General Forestry*

Forestry Club; Photographic Editor Gopher Peavey,  
'36 Tau Phi Delta; Xi Sigma Pi; Y. M. C. A.;  
Foresters Day Association, '36; Freshman Rifle Team,  
'33; Summer Work, Snoqualmie National Forest,  
Washington, '34.



WALTER PAUL  
"Walt"

Mapes, North Dakota  
*General Forestry*

Forestry Club, Xi Sigma Pi; University Boxing  
Champion, '35; Northwest Boxing Champion, '36;  
Summer Work, Bureau of Plan Industry, '33, '34;  
Park Service, Department of Interior, '34.

LEONARD J. PULKRABEK  
"Pulky"

Glencoe, Minnesota

*Silviculture*

Forestry Club; Summer Work, Blister Rust Control, Clearwater National Forest, '31; Foothills State Forest, Pine River, Minnesota, '33; Chippewa National Forest, '35.



RUSSELL ROSENDAHL  
"Unk"

St. Paul, Minnesota

*Forest Sciences*

Forestry Club, Xi Sigma Pi; Summer Work, Bureau of Entomology and Plant Quarantine, University Farm, '35.



PETER SCHUFT  
"Pete"

Hutchinson, Minnesota

*General Forestry*

Forestry Club; Tau Phi Delta; Gobblers, Y. M. C. A.; Freshman Football, '32; Varsity Football, '33, '34 '35; Summer Work, Snoqualmie National Forest, '34.



SULO SIHVONEN  
"Pruns"

Craigville, Minnesota

*General Forestry*

Forestry Club; Tau Phi Delta; Xi Sigma Pi; Track, '33, '34; Summer Work, Snoqualmie National Forest, '34; Liberia, '36.



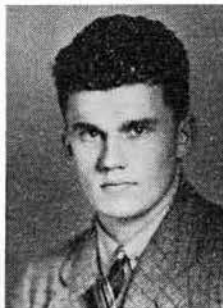
CARL N. THIRY  
"Nick"

St. Paul, Minnesota

*General Forestry*

Forestry Club; Summer Work, Superior National Forest.





DEL W. THORSEN  
"Torg"

Minneapolis, Minnesota

*General Forestry*  
Forestry Club; Tau Phi Delta; Foresters Day Association; Summer Work, Superior National Forest.



YALE WEINSTEIN  
"Weeny"

St. Paul, Minnesota

*General Forestry*  
Forestry Club; Forestry Representative; Student Honor Committee; Gopher Peavey, Circulation Manager, '33; Gopher Peavey, Business Manager, '34; Gopher Peavey Editor, '36; Foresters Day Association; Freshman Football; Menorah Society; Summer Work, Snoqualmie National Forest, Washington, '34; Field Assistant, Cloquet Forest Experiment Station, '35.



LYMAN WILLIAMSON  
"Larry"

Hayward, Wisconsin

Tau Phi Delta, Forestry Club, Gobblers, Y. M. C. A., Foresters Day, 1934; Summer Work, U. S. F. S. Forest Survey Missouri, Dept. Conservation, Wisc. 1933, U. S. F. S. Superior National Forest.



WALDEMAR A. WINKLER  
"Wink"

Duluth, Minnesota

*General Forestry*  
Forestry Club; Y. M. C. A.; Summer Work, State Forest Service, Little Falls, Minnesota, '33; State Blister Rust, '34.



GORDON WYATT  
"Gordy"

St. Paul, Minnesota

*General Forestry*  
Forestry Club; Tau Phi Delta; Xi Sigma Pi; Foresters Day Association; Summer Work, Snoqualmie National Forest, Washington, '34.

RICHARD TOWNSEND  
"Dick"

Duluth, Minnesota  
*General Forestry*  
Forestry Club; Duluth Junior College; Summer  
Work, Superior National Forest.



WILLIAM J. CEDAR  
"Bill"

Minneapolis, Minnesota  
*General Forestry*  
Forestry Club; Summer Work, Superior National  
Forest, '34.

KENNETH W. DANIELSON  
"Kenny"

St. Paul, Minnesota  
*General Forestry*  
Forestry Club.

ARNE ELO  
"Trapper"

Chisholm, Minnesota  
*General Forestry*  
Forestry Club; Tau Phi Delta.

MILES W. KELLY  
"Fairy-foot"

Duluth, Minnesota  
*Forest Technology*  
Forestry Club; Summer Work, City of Duluth,  
Minnesota.







*Freshman Corporation, 1935 Memorial*

**THE MAGIC WELL**

E. G. CHEYNEY

*Do you believe in fairies?  
Or in Brownies, or in elves?  
Who do those things for others  
That they cannot do themselves?*

*When the rich man makes a present,  
It's a gesture, nothing more.  
Look for sacrifice and courage  
In the giving of the poor!*

*In the past some grateful classes  
For their alma maters' sake  
Have built some gates and portals  
And a trail along the lake!*

*To build a gaudy monument  
To increase your own great fame  
May get you into heaven  
But your footing's pretty lame.*

*That persistent water hauling  
Has long been the K. P.'s curse  
Scrambling up with those big buckets  
Surely, there was nothing worse!*

*I can see the countless K. P.'s  
Of the fast approaching years  
Who will bless this corporation  
And sustain them with their prayers.*

*To earn one's bread and butter  
Is a long approved aim  
But it's doing things for others  
That brings everlasting fame.*

*To spend your hard earned money  
In the sinking of a well  
Is certainly far better than  
To spend it raising Hell!*

*So here's to the Corporation!  
Many thanks! And thanks a lot!  
May our blessings fall upon you  
Till your poverty's forgot!*

## STORY IN A KEG

## Freshmen Corporation 1935

The following (a true transcript of the original manuscript) was discovered by "Hacksaw" Nelson, custodian and general informant at the Forest School, Lake Itasca, Minnesota, in a floating beer keg which he had hopefully salvaged near Schoolcraft Island, Lake Itasca, on September 28, 1935. In the letter accompanying the manuscript Mr. Nelson says in part: ". . . I have taken the liberty of thus opening the keg, feeling it was my privilege under the law of the high seas to do so. I have deemed it impracticable to send the entire keg and the solution it contained since only the manuscript itself is publishable. You will note that the manuscript is in a fine state of preservation. . . ."

The original manuscript, unannotated and unsigned, is at the present time in the custody of "Buffle-head" Dawson, famed curator of unnatural birds, University of Minnesota. Following his inspection and report it will be returned to the father of waters in compliance with the request of the unknown author, sans keg. (The keg being retained, note excerpt above, by Mr. Nelson.)—Editor.

"July, 1935

Some of the boys and myself just got back from our last visit at headwaters and after trying to snuggle that cannon ball in my belly for a while I decided to come down here on the end of the dock and set down a few things

that have happened during our stay. I suppose this is a kind of screwy idea but the idea hasn't got anything on me. I'm going to put it in that jug of Dugas' or in that beer keg on Rosey's back porch and put it afloat. Of course this won't mean anything to someone that hasn't ever been to school up here but I don't much care about that. Maybe some of the boys will spot it going down the river, and I'm pretty certain it'll be investigated if it passes Red Wing, knowing "8-ball" and "Shineola" Davis as I do.

It sure is a beautiful nite. The moon is hanging very brite and limpid in the sky back of me; just the faintest breeze is rippling up the bosom of dear old Itasca; the frogs are building up a mighty forte; the mosquitoes are zooming in my ears, and over there in cabin 6 I can hear "ape-man" Zabel making cat-calls at the "Purple Chickadee." Altogether I am feeling pretty sad and low. Tomorrow we'll be breaking camp and everybody will be leaving for their homes, far and near—and darn glad of it!

There are going to be some sad partings, even so. When I think of saying goodbye to that "forty," with our acquaintance so sketchy, and to old "Brownie," with our acquaintance so intimate, I almost wish I could be buried on the dear forty ("Brownie" to boot). But it isn't the "forty" the way the "Killer" and "Rube" play it, nor the "forty" the way "Wildman" Stewart and Hutchinson yodel it—

rather, it is a "forty" the way Cheyney can paint it: a forty of forty types, and around each an arbor or lattice work, with its name stenciled in gold on a trellis over a vine-covered gate; with sample plots bedecked in gold and vermillion, showing the number of herbs or of seedlings contained, and the probable past and the possible future of each stand and type, woven in mystic symbols that only the dryads can read, and mere men may gape at and swoon with conjecture! But hold! . . . such thoughts as these have madness mixed within! . . . thoughts fine for Tamarack swamps where heat and sweat and the skeeters reel the minds of earnest men; but here, upon this dock, in moon's glow, in reverie, I should not wander so!

There is realism to be found—the kind that plays on all the senses and will not bear forgetting. The fetid odor of decaying woodchuck from "Bluegrass" Clark's disheveled bunk; the valorous threats that "Wildman" Walker made to "beat up" whosoever riled his willful whims; the comet's swish of oaths that echoed from the "dorm" along the shore to Cheyney's half-cocked ear; the sadness and the mournings that prevailed when in the charge of pious men, the "quiz" was once more borne to Wegman's store, the Tourist Camp, and back again to troubled sleep beneath the spruces on Itasca's shore; the solemn words of last farewell from clergy's pious Galle, repeated in the dusk of evening o'er the yawning pit; the release of pent-up energy when mourners, in their frenzied sorrow, strove in mimic battle on

the dock whereon I sit; the arc described by "Dicky-bird" Krools hurtling carcass thru the air; the ominous bubbles, mixed with ooze, that marked the spot where "lumberjack" Kjelland and "swamper" Ben Traverse, in frenzied grapple, sank to rise again like dusky fossils of an ancient strain; the perjured story of a cake of soap, twisted by an evil mind, into a tale of ignominy and disgrace; the shameful tale related by "botanical-roarin' Ralph Lorenz" about an operation on a sufferer of "syphonitis" and a bowl; the dedication of the pump from Cheyney's lips, so rich in eloquence and lilting verse of well-placed praise (!); a tale of mighty birds that soar the southern skies from "Gentleman Jim" Hodson's mustached, Bostonish lip, and heard, unwittingly, by mesdames Harmen and Vick who rattled dishes in the kitchen lest they chanced to hear what it was not proper that they should; the muffled sobs that came from Klinger's bunk as dreams of endless wilderness and compass needles danced within his troubled brain; the kindly ministerings of Gjertson's gentle ham on tousled heads with shear and comb; and pleasant cracks of woodticks gorged with blood when snapped by favored hosts.

And there were valorous deeds and chivalry displayed that I must mold into a sullen prose, for lack of song and verse—their rightful company. "Bravo" Toren and his fledgling hawks, rescued from their eerie nest with help of gentle Wahlberg's song, would make a tale for any minstrel's harp; and how, by "Tapeman" Higgin's and "Redman" Hiller's mim-

*Mess Hall*

icking, the birds were taught to make certain varied sounds (that were not sweet to hear) whenever Brownie wandered by; the gentlemanly concern for comfort (and for praise) displayed by Messrs "Moonglow" Kramer, Dech, Adamek, Borchardt, Blackburn, Biskey, Bruce, Carlson, Clark, Dinger, Dodge, Deppe, Dugas, Dods, Davis, Engstrom, Galle, Hagen, Hutchinson, Harmon, Hotchkiss, Hilton, Johnson, Klinger, Kafka, Kidd, Kretsch, Larson, Loula, Lee, Lystad, Lane, Leskela, Mullen, Mead, Meldahl, Nelson, Niemela, Oase, Ohl, Piercy, Peterson, Strain, Stewart, Seebach, Sweeney, Taplin, Toren, Terch, Withee, Zietlow, to the stranded ladies of the tourist camp; the frank and kindly generosity of "Limehouse" Kafka with his Phillip Morrisses, his deep concern vouchsafed when kindly "chizzlers" asked for "Chesterfields".

And there was art displayed—the kind that springs like freshets from the

cavern's mouth, unleashed and frenzied—that burns into the soul and singses genius' tail, and will not be forgotten. All rhythmic grace begot of spriteful nymphs and fiery devils' store were subtly hid within the hob-nailed finery of Wahlberg's number 12's; what mattered if the planking creaked, or gnarled beards dripped saliva as their owner's mouths agape, followed thru, with turn of neck and dialated eye, each intricacy that marks an Anglo-Ethiopian version of the Ballet Russe—'twas "art for Brownie's sake" as someone aptly put it; and there was that frenzy in it. And deep within the forest's solitude and in the hay field, bathed with dazzling summer's sun, where insects sailed in graceful arcs, I saw a match for any dryad's dance of spring; saw gallant knights in entomological array go sallying forth, equipped with but a downy sac of web upon a stick, to catch their winged prey; saw thrust and parry and repose

and lithe forms sailing thru the air with arm outstretched, as dazzling Coleoptera sailed ahead, unmindful of the hot pursuit, saw all the arts of tracing "keys" displayed by "Norskman" Borlaug when he sat ensconced upon paternal Dawson's knee, and proved conclusively that "Dipteras" were butterflies.

And I saw beauty—touched her hair and saw her smile! I saw her dance with lithesome grace across the bosom of Itasca's rippling mirror; saw manly grace in disarray, and unashamed, cavort before her—knowing her to be inanimate!; the beauty of the storm that ripped up white capped waves and tossed the forest canopy as tufts of rye are lashed by more obsequious winds; the eerie light from out the western heavens, screened by scudding clouds and hailed with dismayed cries from denizens of the forest and the camp; the cursing cry from windward of the balcony when Dech and Clark found bedding somewhat

damp and dripping, and the jeering laugh that came from leeward where more fortunate Oase and Synnes sprawled high and dry upon their bunks and listened to their comrades' oaths and the rain rattle; and there was morbid beauty in the attic of the study hall where "killer" Moyle with deft, defiant hands had placed upon pine slabs, in neat, repulsive rows the vegetative remnants of Gramineae—poor, silent, dumb, defenseless specimens of nature's more esthetic moods, pulled ruthlessly from out the bosom of the earth to be identified by those who'd rather see their beauty than to know.

*And now, dear friend, who'er you be,  
That finds this keg on land or sea,  
Remove a draught of Rosy's beer,  
And let the foam surround your  
ears,  
And while it gurgles in your gastrula,  
Hoist one more for old Itasca!"*

Prepared by H. Davis, K. Dech, W. Dugas, N. Borlaug, J. Dinger, and S. Pauley.



BURIAL OF THE QUIZ

*"The solemn words of last farewell from clergy's pious Galle."*

THE JUNIOR CORPORATION,  
1935

By Gordon Wyatt



around the Cloquet Forest Experiment Station. This, of course, is managed by T. Shantz-Hansen, and it seems he got us all onto the idea of managing things. The forest itself, some 2000 acres, is a wee spot of greenery surrounded by barren wastes. Legend doesn't say that Paul Bunyan drenched the area with "tobacca jooce" to keep the forest fires out, but it's a mystery as to how else it could have remained so "forestish." It is only about 95 per cent aspen and jack pine, very becoming to the eye, and very easy to work in since the C. C. C.'s have brushed it out and laid sidewalks along the forty lines.

Back in 1925 (?) a group of hardy pioneers with beards and dialects started this annual pilgrimage to the "near-north," and corporations have been forming ever since. Our experience was probably a mere repetition of facts and events propounded and expounded by former Junior Corporations, but of course it was all new to us. With only Itasca for comparison the possibilities seemed immense. Here was a whole forest and nearby town to get under management. Everybody managed to get to town and most everyone managed to get back at least within the same weekend. So there we were, having a good time all spring. The things we learned could never be gotten from a classroom. For instance, learning to shoot the slingshot for Prof. King.

Last spring the transfer students and some Juniors formed a Corporation and went up to Cloquet to live for a while, just like they've been doing for years. Their habitat might be spoken of as "Cloquet and vicinity," for these fellows were quite mobile considering their worshipful attitude toward the tree with its limited cruising radius. However, they kept at least within the bounds of St. Louis County, which isn't saying much.

Except for a few rounders, the activities of each and all were centered

One of his "A" students could ring the dinner gong at thirty paces.

Under the supervision and benevolent tutorage of "Pop" Allison the fundamentals of forest management were drilled into us, or at least thrown in our faces. We learned the principles of picnic-site-choosing, the tricks of mapping, and innumerable shortcuts in cruising. "Seth" Williamson worked out the Arms' Reach Strip System, a method which works excellently in such types as alfalfa and field corn. The location of contours got to be a cinch for those having a fertile imagination and an Abney which wasn't plugged up in one or more ends.

We were told that by using these basic fundamentals, forests and things could be put under a system of sound management whereby the ideals of Sustained Yieldism might be attained. It was when "Pop" gave us each 3 or 4 forties that we really got onto the idea of managing things. Keeping up with "King's Nonsense" soon became a simple swivel-chair task. Every cabin had its "dreamers," those facultative souls who could envisage in their minds' eye the phenomena which might have been observed in the field. In the kitchen the K. P.'s became uncannily efficient in regulating the apportionment of desserts so that a goodly amount would be left for a "snack" after the last dish had been sterilized in soap and slop. Everywhere things began to perk up and get systematic. Instead of having six men waiting for the seventh to get out of the bathtub, nobody took a bath.

Drumming logs were managed under the policy of the greatest good to the greatest number. This bewildered the poor grouse, who had to advance on the enemy no matter what direction he flew in.

All in all, things were pretty "cagey," as the canaries say. The only time the situation became unmanageable was during the last few days of "Pop" A. We had to send to town twice for more midnight oil. Cigarette butts, coffee grounds, and headaches were literally littered all over the place. Then came the Final Day when every soul was squared up with Allison, and we hied us off to town en Masse to work off the "digit complex." Charlie Forsee, the cheerful proprietor of 4C's Tavern, might have bought Long Island with the proceeds, but he didn't. Instead he remodeled his joint to make room for the next celebration. We might say that practically half the population went to town (in more than one way) at least once a week, but these en masse mob psychology affairs were infrequent and really presented quite a spectacle (in more than one way).

Anyhow, we came dribbling back to camp to learn that Prof Cheyney had invaded the area, bringing with him a newcomer, "Dirt" Alway, who was to teach us things in forest soils. (He really did, too.) Ralph T. kept right on persecuting us throughout the quarter. Even the fish and game men began to grumble about this last. But after Allison's nightmare the situation as a whole loosened up. Along with this

came mild weather and pleasant days, making the last part of the session quite easy to take, indeed. This is when the slingshot habit came into vogue. Actually, pea shooters were the only part of King's course that each and all took an interest in. Many a potential Schoolmarm went in to the construction of these elastic weapons. The underlying motive was to kill and prepare study skins of small animals, but it developed into something like Frankenstein's monster's wife from the animals' viewpoint.

Along with slingshots came the urge for exercise. In popularity volleyball led every other sport, even dancing (the sissies). Many were the battles between the Foresters' Cabin and the White House, with the latter usually the victors. The Foresters won when Gene Hurley played for the White House, and lost when he didn't. Well anyhow, Gene could pugilize. Down in that elite hell-hole, the Boars' Nest, the boys would get a workout by having a little family brawl every so often. The lads from the Power House mostly exercised their brains, but once in a while they would come out to be slaughtered on the V-ball court.

Cheyney and Alway didn't ask very much from us. A lot of it was just digging holes in the ground. If we were out with Cheyney we put seedlings in the holes; Prof. Alway's holes were just looked at and left. Cheyney had us doing a lot of silviculture too, one whole acre of thinning for each crew, and a ten acre plot for . . . was it silvicultural management? Then

there was all this nursery work, nursing infant trees from the seed to within striking distance of a sapling.

Thus we carried on, living the life of Riley, getting to town even more often than usual. Everybody thought they had jobs for the summer, so a rather gay atmosphere pervaded the camp at all times except Sunday mornings. The poor borrowed from the rich, using as collateral their first (potential) pay check. Everything was done in a sort of carefree manner; the last two weeks were regarded as a vacation preparatory to starting on the job. Then came the Great Disappointment. Uncle S. decided that he didn't need so many Tech. assistants after all. All of which made things very sour, especially for those who had fiddled away their first pay check already. Camp ended in this kind of a mood, lightened temporarily by a juicy refund from the Corporation's treasurer, Bernie Peterson.

This would be a good place to stop, but we haven't worked everybody's name into it yet. These last lines can serve only as a memorandum to those who made up the Corporation of '35, because we're sure no one else would care about who plugged up which chimney, and who stole the spittoon from what hotel. Altogether there were five cabins, housing forty five men. First (they think) would come the "Boars' Nest." It's a tumble down shack tucked away under the pines in J. Stillwell's back yard. The inside usually looked like a heap of dirty clothes with bare feet sticking out. They must



have cleaned it up once in a while just like everybody else, but we couldn't get any of them to admit it. It was kind of a socialistic community—what's yours is everybody else's, unless you hide it. The cabin was peopled as follows: "Popeye" Waukechon, "Grizzly Bill" Major, "Wimpy" Gillson, "Fairy Foot" Kelly, "Sig" Dolgaard, "Silent" Jaskoviak, "Kenny" Danielson, "Red" Nermoe, "Walt" Paul, "Seth" Williamson, and "Jim" Case.

The Foresters' Cabin was in an advantageous position, being closest to the cook shack. It was infested with "Weasel" Weinstein, "Wood-tick" Ostrander, "Prexy" Adams, "Buddha" Erickson, "Hoimie" Arle, "Love and Kisses" Thorsen, "Intestinal" Wyatt, and "Toasty" Ambrosen. This is where the skat flew thick and far. When the stove was hot enough to make the wall-board curl, the situation would be described as "nice and toasty." Somebody was always trying to keep everybody from studying, so that nobody would be ahead of anybody. The situation was undescrivable; I had to live there.

Right next door to the Foresters' Cabin was what, for want of a better word, might be called the "Game Men's Roost." It did have kind of a fishy atmosphere, and it was practically stinkin' full of Game Managers. By incidents or actions most all of these fellows were well known. You intimates all remember how Bob tried to "pull a Montgomery" on Griper Dingle, our steward and soulful yodeler of "Two Loves Have I". And "Snipe" Hall, who fell from a tree

while out playing "Tarzan" one day. The "Iron Range Trio," Peterka, Elo, and "Red" Livens. There was "Parson" Johnson, who broke the rules once to see a show in town, and Jim Hovind, Tom Mortenson, and Jack Densmore. All these, or nearly all, were King's disciples, and were forever justifying the porcupine.

The "White House" was just a mass of muscle and might. Among other things about this joint was its tax on gassy visitors. We recall one night when half our evening's winnings went to the pure air fund. It was a swindle! Reading from right to wrong, there were Dewey Hahn, "Pruncer" Sihvonen, Onni Koski, "Big John" Gelbman, "Kentucky" Hurley, Irv Nerenberg, Bill Beckert, and Pete Schuft, the Blonde Dutchman. "White House" is a misnomer. All who know Big John, Dewey, Sulo, and Onni will agree that "Packing House" would fit this beef trust more appropriately. And the rest didn't bring down the average much.

Finally there was the "Power House", so named because of their studious habits. Whenever there was work to be done, these guys did it without a whimper. Only once did they slip, and that was actually shocking! Steve, Haas, and Bernie quaffing the amber fluid at 4-C's, and carrying on in the most bold and unrefined manner; and Steve almost getting himself entwined with Gertie. You could expect it from the rest of that bunch, but not from these three. The other sinners were Carl Thiry, "Gentleman

Jim" Henderson, "King" Lear, Richie Townsend, and "Beethoven" Winkler, the Warbler of the North.

This just about rounds up the whole situation. There were a couple of married men with us; Jack Manweiller, who had a wife in Cloquet, and Mr. Kahn, who had four of them in India. Both of these guys sort of worked by themselves, but that didn't stop them from coming around between and after hours. Mrs. Watkins and Sophie made up an essential part of the camp; they were the cook and cookie, respectively. The least that can be said about Mrs. Watkins is that many a lad would

just as soon traded mothers with her son. Let Gene do all the saying about Sophie.

In accordance with the old established custom, we will conclude this thing in a serious vein by stating that everyone derived a great deal of benefit from the Cloquet session. The value of field instruction has long been known, and in spite of all the foam and foolishness, no one failed to take advantage of the opportunities offered. As a result, we believe that each member of the class carries with him today a better knowledge of the forests and the principles of forestry.



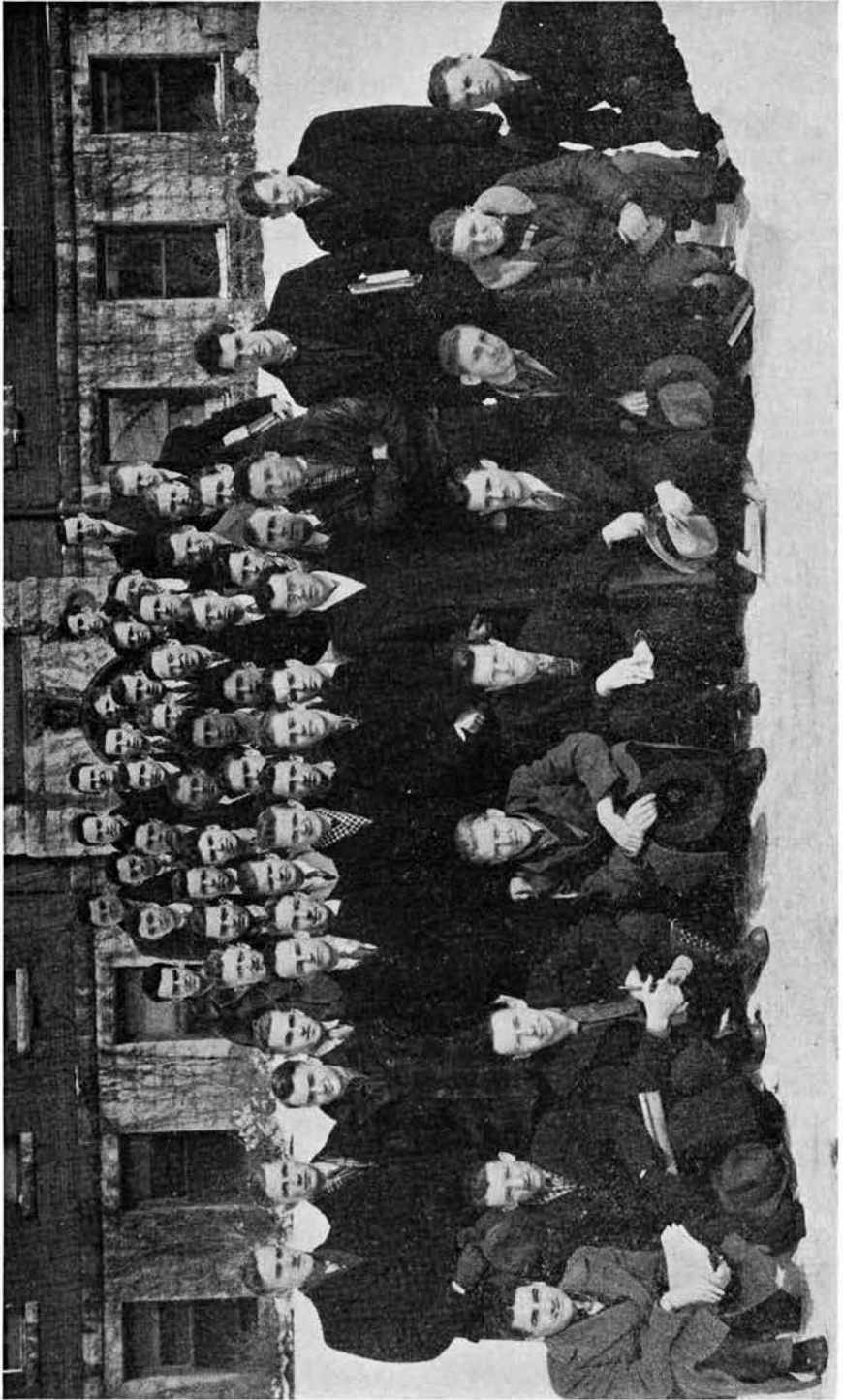
"The foresters cabin was in an advantageous position, being closest to the cook shack."

"Weasel"  
WEINSTEIN

"Intestinal"  
WYATT

"Toasty"  
AMBROSEN

"Wood Tick"  
OSTRANDER



CLASS OF 1937



CLASS OF 1938



CLASS OF 1939

## FORESTERS DAY, 1936

*Log Chopping Contest*

Foresters Day was held this year on January 18th, at the same place, by practically the same people. You know how those things go: there are always officers, and a committee, and then a few other people. A new high was set this year for committee members, there being about eighty all told.

The president, John Miles, showed extraordinary executive ability by appointing so many good committee heads that his job was really a cinch. Phil Schroeder, as secretary, looked after the principles of things; Brother Mosebrook was either too dumb or afraid, for he came out of the thing no richer than he went in. He was the man, you know, that had to have receipts for everything, signed and countersigned, dated and clipped.

The day before The Day was featured by a program in the evening, in the Farm Auditorium. Of course, Frank Shearer was toastmaster. Frank has got so that he answers the 'phone:

"Ladies and Gentlemen . . ." and it appears that this got him into a great deal of trouble with the little lady, who inferred that he inferred she was keeping company other than his; but of course, any woman who could go with Frank wouldn't even look at any other man, so . . . . .

Doc. Schmitz made a mighty fine speech, paying tribute to Bill Cheyney, to whom the Day was dedicated. For once, Cheyney was not called upon for a speech. Incidentally, Cheyney was one of the prime factors in the success of last years day; in case you don't know it, that "Backside Wampus" idea was all his'n, as was, indirectly, the baseball game on snowshoes.

Dr. Shirley (the Lake States Shirley) gave a mighty fine illustrated lecture on European Forestry, and everyone went home feeling fine. Jim Henderson deserves credit for the success of the evening program.

Saturday morning dawned bright and not so clear, with the mercury at --12 degrees. Sharp, Brandborg, Ellstrom, Kimball, and Kron turned out early to get the field ready for the big Day. At noon, a lot of dirty-fingered K P's wandered down to the Cafeteria and returned with Beans "for two hundred and fifty", which was almost enough for a hundred-forty. The rest got corned Willy. Some boxing followed; if the boys lacked technique, they certainly had enthusiasm. There was gore on the ceiling, and the spectators were kept on the move all the time to avoid such things as flying teeth, bits of rope, an ear or two, and such-like. None of the boys were very good-looking to begin with, so there was not much to lose.

Outside again, Sharp had his end of the job well under control. Engstrom and Prof. Angelo took the chopping and the sawing with comparative ease, although it was plain to see that they were both afraid of last year's champion. Last year's champion, however, pooped out about halfway through and began looking for knots to alibi with. (Ya-a-as you did, Miles!)

Miles, Shema, and Byfield beat out Brandborg, Ellstrom and Sharp in the log-skidding. The losers claimed a fluke, which practically proves the win was on the level. Brandborg took the honors in total in axe throwing. My guess is he got that way dropping everything to beat the chow-bell; only he dropped things with an overhand motion.

Engstrom took the snowshoe race, which sort of took the wind out of the Survey gang, who figured they were very good at such thing. We'll say this; the boys may go down hard, but they know how to get up gracefully, which is quite a trick on webs.

We're not sure who won the ski race. We're not even sure anybody finished it. Maybe Hawkins did.

Then some damned fool had an idea about a touchball game on snowshoes, and we had to buy the State two new pair. Old Papa Schuft played the entire game with that damned cigar in his mouth, which was really not quite fair. None of the other boys had cigars. Pete was right there with his passes, though; and lots of people caught them on the other side of the line. We were rather disappointed with some of the boys; if they got into the other teams backfield, they were likely not to get back onside till three or four plays later.

Ellstrom saw somebody pointing a camera, and when he tried to look pretty for the picture, stubbed his toe and went into the air, shoes and all. While he was up there, a pass came along and hit his hands. Ray was pretty tickled to think they'd throw the ball at him. All the boys did all right, though.

Now, just to prove the Foresters can prove up in a pinch: because there is such a thing as an Ag School, we did not get in to decorate the gym until 5:00 that afternoon. But it was ready by 8:30, complete. And ditto the ex-

hibits. Bousquet handled the decoration end, and Gregg and Doug Johnson took hold of the exhibits. The exhibits were excellent; and the decorations have never been beat, and won't be until next Forester's Day. There was a dark moss-green ceiling that hid every girder in the place; a great lighted chandelier, hung with stars, was suspended from the center; and the whole wall, clear around, was lined with balsam and spruce trees, which here and there formed very convenient chaperon-proof thickets. The whole effect was that of a clearing in the woods, with a dark sky overhead. Some of the boys, previously reinforced, even figured they were back to brush, and started growing whiskers. Surprisingly, none of the decorations were torn down by the guests.

The upstairs was turned into a lounge, tree-lined and well-furnished; and one room was transformed into an old-fashioned saloon that was run by the Home Economics association (that was very good politics). That was a pretty popular spot, being as there was a piano and Wahlberg.

The crowd was the best on record at the gym; nigh onto three hundred couples.

The high spot of the evening came when Bill Major presented Gretchen

Trageser, our own librarian, with a bouquet of roses and officially announced her selection as Queen of Forester Day. And Smoky Adams was presented to the crowd as the most representative Son of Paul Bunyan for 1936. There were few speeches, which was well.

A good deal of the credit for the success of the day goes to Bill Major, who did some fine publicity work. Al Hagen, as member of Decorations, was a sort of handy-man who deserves credit for seeing, and doing well, a lot of jobs that otherwise hung at loose ends. Bob Goudy handled checking efficiently; Don Ambrosen took charge of the Floor. Yale Weinstein, who has been waiting for this article for two quarters, took charge at the door and with a great deal of firmness evicted several rather undesirable people. Gordy Wyatt handled ticket sales, and for some reason is still sane. (at least, he has gotten no worse). Ray Ellstrom got out invitations to a lot of people. Some of them came, some tried but couldn't, and some just didn't give a damn. Or maybe they forgot. And John Gelbman did a mighty good job of hiring an orchestra.

Hawkins took charge of the chaperons, who were well-coached and went home early. They were not really needed in that capacity though.





## VOYAGEURS

The winter quarter of 1936 saw the advent of a new forester's organization. Early in the quarter, a group of men, eight in number, held a series of meetings in which the procedure of organizing was discussed. A meeting was called in which a group of thirty-one men were presented with the plans for organization. At this meeting the Voyageurs became a reality. At bi-weekly intervals for the remainder of the quarter, meetings were held at which the process of organization was furthered. New men were elected into the group, by-laws were framed, officers chosen, and a document known as "The Policy of the Voyageurs" was drawn up.

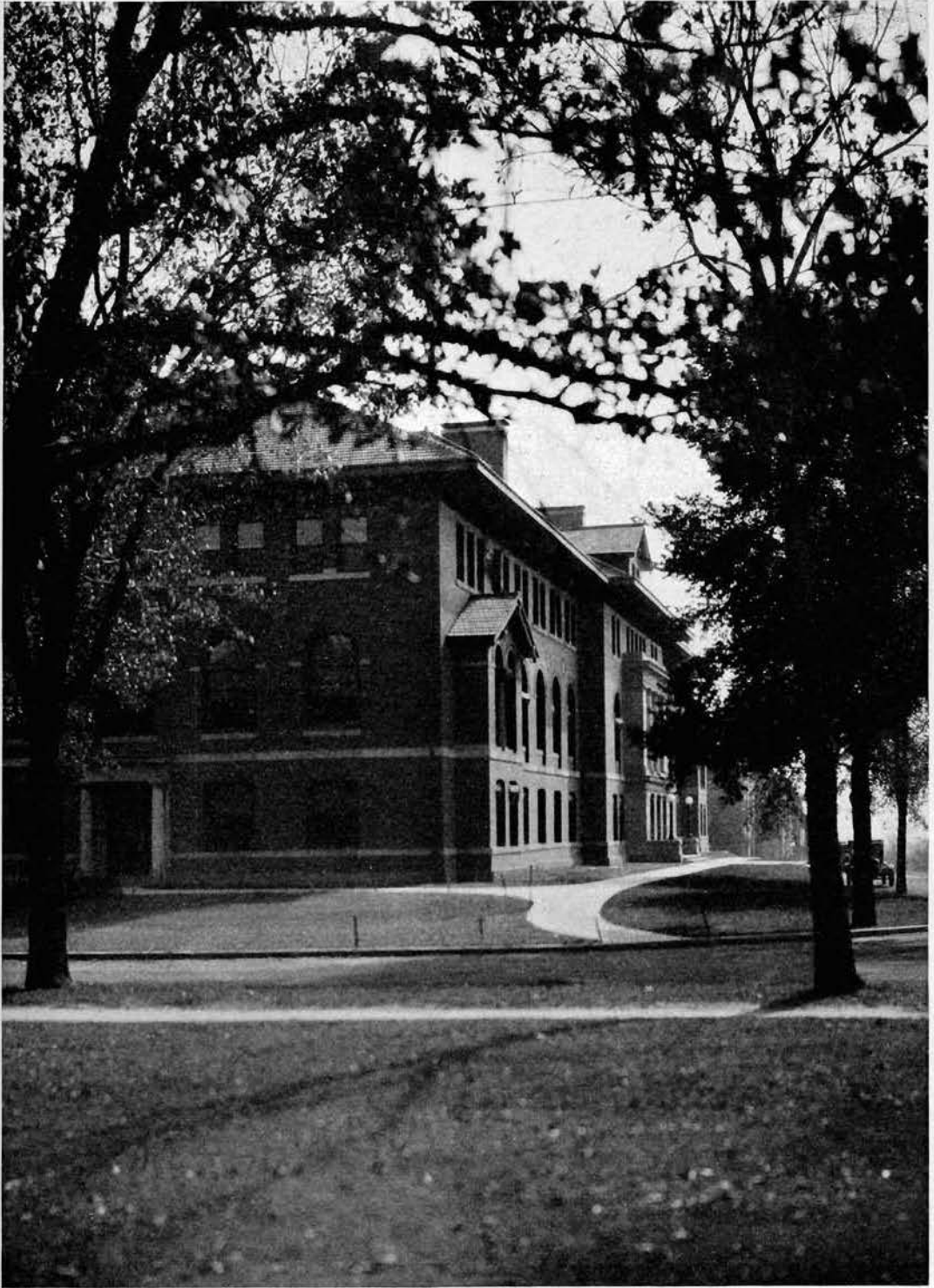
Many of the leaders of the Voyageurs were lost to the club in the spring quarter. Some dropped from school but the majority were at the experiment station at Cloquet, Minn. Nevertheless, the work of the club was carried out at regular meetings. The notable advance made in this quarter was the introduction of two social activities, a stag party and a spring party.

There was a great amount of doubt as to whether a new forester's organization would succeed. Apparently there isn't any actual position which a group must attain before it can be called successful. The Voyageurs haven't been in existence long enough to make any claims to success. However, if the

earnest purposes of the organizers, the activity of the members, and the brief record of achievements are any criteria of success, the Voyageurs are headed in the right direction.

What the Voyageurs stand for and how their activities are regulated is easily expressed in two words—service and cooperation. Service to the University as a whole but especially to the Farm Campus; service to the profession of forestry; and service to every forester in need of assistance. To indicate their intention not to precipitate anything aside from friendly rivalry, the Voyageurs are pledged to cooperate with other forester's organizations, with all projects undertaken for the benefit of the College of Agriculture, Forestry and Home Economics, and within their own group. The accomplishment of these two purposes is to be reached by following three lines of activity—education, politics and recreation.

At present there are fifty-four duly elected members in the Voyageurs. All business within the group is carried on as formally and democratically as possible. Membership is by invitation only, and is limited to men registered in forestry. However, any forester can be invited to attend a meeting by contacting the class representative. The present officers are Ed. Kron, president, and Erich Kienow, secretary-treasurer.



*Administration Building*



## TAU PHI DELTA

*National Professional Forestry Fraternity*

*Founded at*  
UNIVERSITY OF WASHINGTON  
1924

*Local Chapter*  
BETA CHAPTER  
1926

### FACULTY MEMBERS

RALPH W. LORENZ  
R. M. BROWN  
FRANK KAUFERT  
CLYDE CHRISTENSEN

HENRY SCHMITZ  
E. G. CHEYNEY  
J. H. ALLISON  
L. W. REES

### ACTIVE MEMBERS

ART SWEET  
PETER SCHUFT  
RAYMOND NERMÖE  
DUANE RAUENHORST  
LEO WAUKECHON  
LYMAN WILLIAMSON  
FRANK PERKINS  
RICHARD C. SMITH  
ROBERT DOSEN  
DONALD CARSWELL

CHESTER McNELLY  
B. FRANCIS KUKACHKA  
JOSEPH LORENZ  
ARNE ELO  
KARL EKSTROM  
EARL ADAMS  
EVERETT BYFIELD  
VINCENT BOUSQUET  
ORRIN FOLSOM  
HERMAN ARLE

DONALD GREGG  
DAN LAPPALLA  
JOHN MILES  
WILLIAM MAJOR  
JOHN S. RISS  
HARRY MOSEBROOK  
EVAN K. SANDERS  
JAMES HENDERSON  
HERBERT ERICKSON  
C. FRANK SHEARER

### PLEDGES

JACK SCHNEEWEIS  
ROBERT WAHLBERG  
EDWARD LOULA  
JACK MEAD  
NORRIS NELSON  
SAM POIRIER  
JAMES CASE  
ROGER MEACHAM  
ROBERT GOUDY  
PHILLIP SCHROEDER

MARTIN MELDAHL  
WALTER PAUL  
GORDON WYATT  
DEL THORSEN  
MYRON OSTRANDER  
DONALD FOLSOM  
RALPH EISLE  
BERNARD SHEMA  
AXEL ANDERSON  
JOHN GELBMAN

DOUGLAS JOHNSON



## XI SIGMA PI

### *National Honorary Forestry Fraternity*

*Founded at*  
UNIVERSITY OF WASHINGTON  
1908

*Local Chapter*  
DELTA  
1920

#### FACULTY MEMBERS

T. SCHANTZ-HANSEN  
L. W. REES  
HENRY SCHMITZ  
RALPH DAWSON  
CLYDE CHRISTENSEN  
C. O. ROSENDAHL

J. H. ALLISON  
R. M. BROWN  
E. G. CHEYNEY  
FRANK KAUFERT  
RALPH T. KING  
RALPH W. LORENZ

HENRY HANSEN

#### ASSOCIATE MEMBERS

R. ZON

G. GEVORKIANTZ

#### ACTIVE MEMBERS

KARL JACOBSON  
WARREN LIVENS  
JAMES HOVIND  
ROGER ANDERSON  
EUGENE NELSON  
TED MYREN  
ALVIN T. HAGEN  
RUSSEL ROSENDAHL  
IRWIN JOHNSON  
TOM EVANS  
BERNIE PETERSON

KENNETH DANIELSON  
HERBERT ERICKSON  
MYRON OSTRANDER  
GORDON WYATT  
WALTER PAUL  
NORMAN BORLAUG  
MORLEY BRANDBERG  
SIGURD DOLGAARD  
PHILIP JORANSON  
CLINTON TURNQUIST  
SULO SIHVONEN

## THE GRADUATE SCHOOL

As a science progresses there is an increasing need for specialization in the component fields that comprise the science. Generally speaking, more intensive training is required for research work than is obtainable in the four years of undergraduate study leading to the Bachelor's degree. This usually brings the student interested in research, back to school for graduate study. That this trend is being felt in forestry is evidenced by the increasing number of advanced degrees conferred in recent years by forest institutions throughout the country.

The Professional Forestry Schools Report, recently issued by The Society of American Foresters, lists 139 men working for advanced degrees in 18 different schools for the year 1935-36. Of these 114 were working towards the degree of Master of Science in 11 schools, and 25 for the degree of Doctor of Philosophy in 7 schools. This figure is slightly higher than last year when 104 were candidates for the Master's degree and 18 for the Doctorate, giving a total of 119. For the calendar year of 1935 there were 58 Master's degrees conferred and 8 Doctor's degrees. In the period 1902-1935 there has been a total of 1425 Master's degrees and 61 Doctor's degrees which have been granted by forest institutions in the United States.

The Division of Forestry of the University of Minnesota grants two advanced degrees, the Master's and the Doctor of Philosophy degrees. For

the Master's degree a minimum residence of one year is necessary. The actual work entails about 18 quarter credits in the major and 9 in the minor, in addition to the thesis work. A reading knowledge of either French or German is required, although an exemption from this may be made in individual cases.

The minimum residence for the degree of Doctor of Philosophy is usually 3 years, although this will vary with the status of the candidate. Usually 15 credits of graduate course work per quarter in addition to the thesis is the work carried by the student. For the Doctorate a reading knowledge of both French and German is required.

This year there are 9 forestry graduate students at the University of Minnesota. There follows a list of these students.

Two of these are instructors working for the degree of Doctor of Philosophy, they are Mr. Ralph Lorenz and Mr. Henry Hansen. Both of these men received their Bachelor's degree in Forestry at the University of Minnesota.

Mr. Ying-Chen Li of Yung-Cheng, Honan, China, a graduate of the National Southeastern University of Nanking, China, is completing work for his Ph. D. in forestry. His thesis work deals with the determination of the water content of coniferous seedlings of different ages. Mr. Li is working

primarily with two species, Jack pine and Norway pine.

Mr. Kwoh-hwa Cheo of Liyong Krangsa, China, is a graduate of the University of Nanking, receiving the degree of Bachelor of Science Forestry in 1927. Mr. Cheo is making a preliminary study of the shoot and root development of certain coniferous and hardwood seedlings in forest and prairie soils.

Mr. Hsioh-li Shen also a graduate of the University of Nanking, received his bachelor's degree in 1924. Mr. Shen has not yet decided upon the nature of his thesis work.

Mr. Ta Pu Ma of Nanking, China, is a graduate of the National Central University of Nanking. Mr. Ma has as yet not decided upon his thesis material.

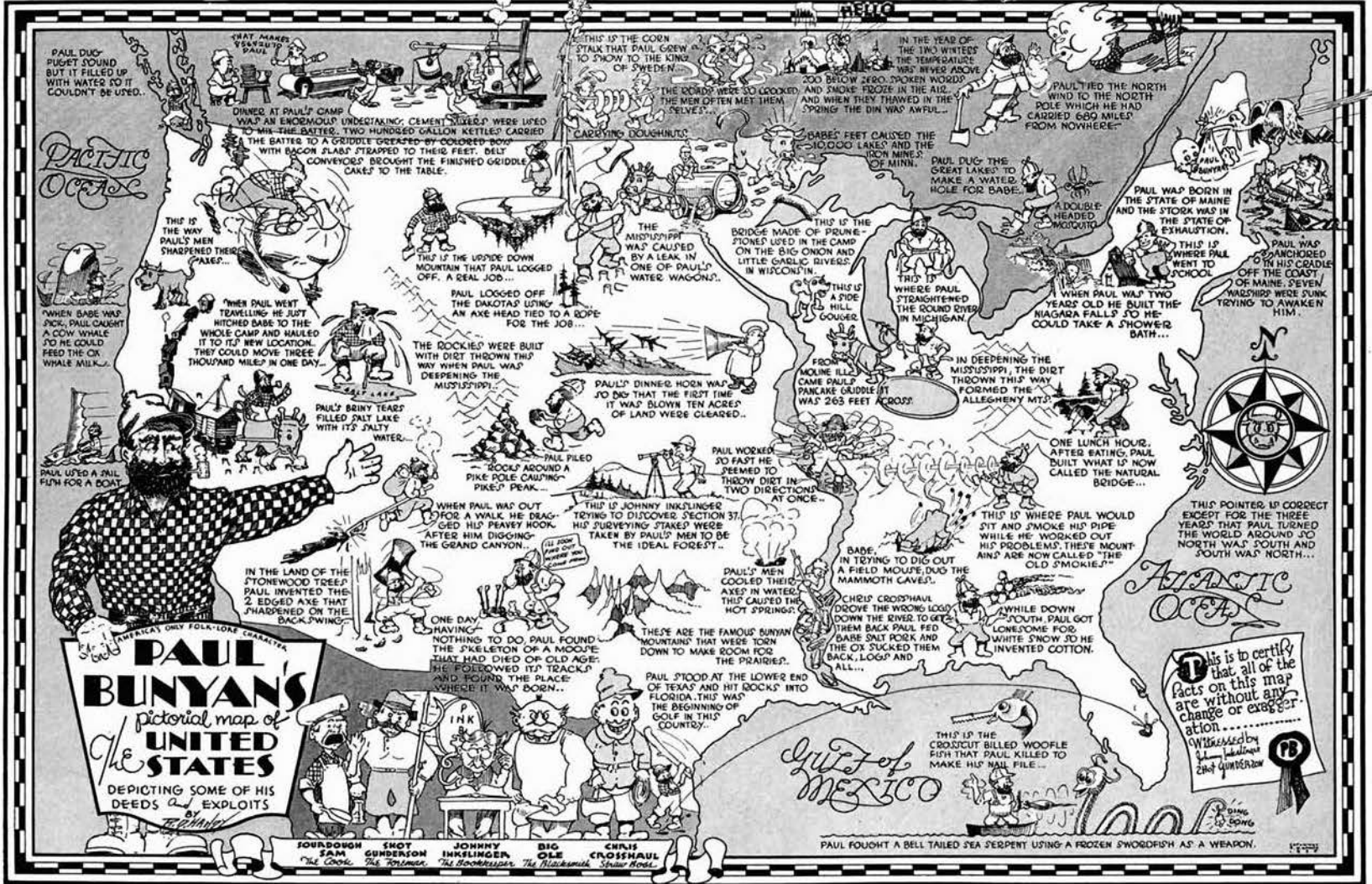
Mr. Harvey Erickson, a graduate of Bio-chemistry at Minnesota in 1933 is working for his Master's Degree which

he plans to obtain this spring. His thesis work is in the field of wood preservation and more specifically entails a study of the permeability of woods to certain liquids and the determination of the factors affecting the rate of flow.

Mr. Lee J. Waukechon, a graduate of St. Norbert College in West De Pere, Wisconsin is taking graduate work in forestry leading to the degree of Master of Science. Mr. Waukechon's thesis work deals with a study of the rate of wound healing in forest trees as caused by pruning.

Mr. E. L. Holbrook, a graduate in forestry from Minnesota in 1935, is working for his Master's degree. The thesis subject is concerned with a comparative study of the total nitrogen and nitrate nitrogen content of soils under forest covers of varying densities and more specifically with the affect of hydrogen concentration and soil temperature on the production of nitrates in the soil.





PAUL DUG PUGET SOUND BUT IT FILLED UP WITH WATER SO IT COULDN'T BE USED.

THAT MAKES PAUL

DINNER AT PAUL'S CAMP WAS AN ENORMOUS UNDERTAKING. CEMENT MIXERS WERE USED TO MIX THE BATTER. TWO HUNDRED GALLON KETTLES CARRIED THE BATTER TO A GRIDDLE CREATED BY CONVEYER BELT WITH BACON FLAYS STRAPPED TO THEIR FEET. BELLY CONVEYERS BROUGHT THE FINISHED GRIDDLE CAKES TO THE TABLE.

THIS IS THE CORN STALK THAT PAUL GROWN TO SOW TO THE KING OF SWEDEN.

THE CORDS WERE SO CROOKED AND SMOKE FROZE IN THE AIR AND WHEN THEY THRAWED IN THE SPRING THE DIN WAS AWFUL...

IN THE YEAR OF THE TWO WINTERS THE TEMPERATURES WAS NEVER ABOVE 200 BELOW ZERO. SPOKEN WORDS

PAUL TIED THE NORTH POLE TO THE NORTH POLE WHICH HE HAD CARRIED 680 MILES FROM NOWHERE...

PACIFIC OCEAN

THIS IS THE WAY PAUL'S MEN SHARPENED THEIR AXES...

WHEN BABE WAS PICK, PAUL CAUGHT A COW WHALE SO HE COULD FEED THE OX WHALE MILK...

WHEN PAUL WENT TRAVELLING HE JUST SWITCHED BABE TO THE WHOLE CAMP AND HAULED IT TO ITS NEW LOCATION. THEY COULD MOVE THREE THOUSAND MILES IN ONE DAY.

PAUL'S BRINY TEARS FILLED SALT LAKE WITH ITS SALT WATER.

PAUL USED A PAUL PUN FOR A BOAT

THIS IS THE UPSIDE DOWN MOUNTAIN THAT PAUL LOGGED OFF. A REAL JOB...

PAUL LOGGED OFF THE DAKOTAS USING AN AXE HEAD TIED TO A ROPE FOR THE JOB...

THE ROCKIES WERE BUILT WITH DIRT THROWN THIS WAY WHEN PAUL WAS DEEPENING THE MISSISSIPPI...

THE MISSISSIPPI WAS CAUSED BY A LEAK IN ONE OF PAUL'S WATER WAGONS...

BRIDGES MADE OF POLINE STONES USED IN THE CAMP ON THE BIG ONION AND LITTLE GARBLE RIVERS IN WISCONSIN

BABE'S FEET CAUSED THE 10,000 LAKES AND THE 1000 MILES OF MINN.

PAUL DUG THE GREAT LAKES TO MAKE A WATER HOLE FOR BABE.

DOUBLE HEADED MOQUATO

PAUL WAS BORN IN THE STATE OF MAINE AND THE STORK WAS IN THE STATE OF EXHAUSTION.

THIS IS WHERE PAUL WENT TO SCHOOL

PAUL WAS ANCHORED IN HIS CRADLE OFF THE COAST OF MAINE SEVEN WARSHIPS WERE SUNK TRYING TO AWAKEN HIM.

WHEN PAUL WAS TWO YEARS OLD HE BUILT THE NIAGARA FALLS TO HE COULD TAKE A SHOWER BATH...

THIS IS A PINE HILL GOUGER

THIS IS WHERE PAUL STRAIGHTENED THE ROUND RIVER IN MICHIGAN

IN DEEPENING THE MISSISSIPPI, THE DIRT THROWN THIS WAY FORMED THE ALLEGHENY MTS.

FROM MOLINE ILL. CAME PAUL'S PANKA GIDDLE IT WAS 265 FEET ACROSS

ONE LUNCH HOUR AFTER BATING, PAUL BUILT WHAT IS NOW CALLED THE NATURAL BRIDGE...

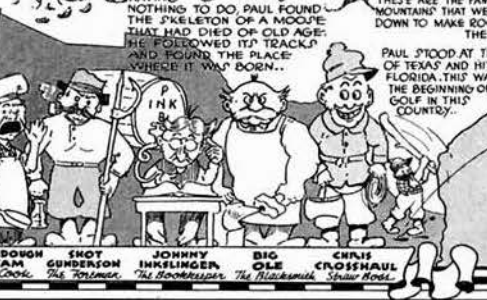


THIS POINTER IS CORRECT EXCEPT FOR THE THREE YEARS THAT PAUL TURNED THE WORLD AROUND SO NORTH WAS SOUTH AND SOUTH WAS NORTH...

ATLANTIC OCEAN



AMERICA'S ONLY FOLK-LORE CHARACTER  
**PAUL BUNYAN'S**  
pictorial map of the **UNITED STATES**  
DEPICTING SOME OF HIS DEEDS & EXPLOITS



FOURDOUGH SAM GUNDERSON THE COOK, THE TOLPANCE, THE GONKORSHAN, THE MACKINAC, SPAIN ROSE, JOHNNY INKSLINGER, BIG OLE, CHRIS CROSSHAUL

BABE IN TRYING TO DIG OUT A FIELD MOUSE, DUG THE MAMMOTH CAVES.

THIS IS WHERE PAUL WOULD SIT AND SMOKE HIS PIPE WHILE HE WORKED OUT HIS PROBLEMS. THESE MOUNTAINS ARE NOW CALLED THE OLD SMOKIES.

WHILE DOWN SOUTH PAUL GOT LOWDOWN FOR WHITE SNOW SO HE INVENTED COTTON.

CHRIS CROSSHAUL DROVE THE WOODS LOGS DOWN THE RIVER TO GET THEM BACK PAUL FED BABE SALT PORK AND THE OX SUCKED THEM BACK, LOGS AND ALL...

THESE ARE THE FAMOUS BUNYAN MOUNTAINS THAT WERE TORN DOWN TO MAKE ROOM FOR THE PRAIRIES.

PAUL STOOD AT THE LOWER END OF TEXAS AND HIT ROCKS INTO FLORIDA. THIS WAS THE BEGINNING OF GOLF IN THIS COUNTRY.

Gulf of Mexico

THIS IS THE CROSS CUT BILLED WOOLFISH FISH THAT PAUL KILLED TO MAKE HIS NAIL FILE...

PAUL FOUGHT A BELL TAILED SEA SERPENT USING A FROZEN SWORDFISH AS A WEAPON.

[ 64 ]

## EDITOR'S NOTE

*An alumni section is difficult to prepare simply because it depends so much upon the individual responsibility of each alumnus to send information about himself, a difficult job for the more modest, and on those alumni with which he is associated in the field.*

*We have tried to improve this section by appointing various alums in the different regions in the United States to write on alumni activities. Duplication of effort has appeared but in the end perhaps we have at least initiated a plan that will in the future, give the alumni section a completeness and accuracy that will make it one of the most interesting sections in the book.*

*Undoubtedly, too much weight has been given different alumni and not enough to others. This difficulty is, of course, hard to avoid. At any rate—here's to the alums and to those who spent valuable time and effort in preparing alumni information for us the staff wishes to render its sincerest appreciation of their efforts.*

**Region One**

Region one seems to be particularly devoid of Minnesota men. To the best of our knowledge there are but three out there among the sheep at the present time. Chas. Simpson who is rumored to be a former Minnesota man is now Supervisor of the Coeur d'Alene National Forest. Elmer Marks, 1929, and Irwin Puphal seem to be the only representatives of the Minnesota Forestry School in the region.

Irwin Puphal, 1930, worked on the Cabinet National Forest in Montana in '32 and '33 as assistant ranger, got one of those fabulous NRA technician appointments in the fall of '33 and snared a regular rangers appointment in the summer of '35. As a technician he worked for the NRA Experiment Station on the Economic Survey. Irwin claims to have bored into more trees than all the woodpeckers in the world, bar none. Last summer he was given a ranger's appointment on what

is known as the Nine-mile district of the Lolo National Forest. Irwin wishes us to let "Happy" Forder, Cliff Risbrudt, and "Breezy" Nelson know that the place where they had the flat tire is on Irwin's district. If the shock of getting his Peavey before the 4th of July doesn't kill him, playing with fireworks probably will.

Elmer Marks, 1929 has been with the Experiment Station as a Technician since 1933 and is still with it. He has been engaged on the Economic Survey and also on special growth studies. Unlike Puphal, he is still in the state of single blessedness. Look out for leap year Elmer. He is stationed at Missoula and can be reached there in care of Uncle.

**Region Two**

L. G. Baumhofer, 1925, is still with the Division of Forest Insect Investigations, U. S. Bureau of Entomology and Plant Quarantine. He has been transferred to Fort Collins, Colorado,



where a new laboratory has been recently established.

Carl G. Krueger, 1927, is still on the Shoshone, at Cody, Wyoming. He tells us that his family now consist of a wife and a son.

Phillip Watterberg, 1934, sends us three addresses, very neatly typed on Government watermarked paper. He says to wit and verbatim,

"I am sending you three of the 'lone simoleons' you requested. Will you send Peaveys as follows, one to Alvan C. Stearns, 1106 Prospect Ave., Norfolk, Neb. One to Robert Dellberg, Box 253, Holdrege, Neb., and one to me at the same address."

### Region Three

Don W. Egermayer. Don has been on the Coronado National Forest in southern Arizona for some time, and from all reports he is enjoying his work. While Minnesota is submerged under a blanket of snow, Don basks in the warm sunshine of the desert.

Leon Hill, 1933. In the country where the Spanish Conquistador Coronado's futile quest ended midst the fabulous seven Cities of Cibola (sunbaked adobe pueblos perched upon black igneous mesas) Leon is now District Forest Ranger. His District is the Zuni and forest the Cibola in New Mexico. Prior to his appointment in 1934 Leon was on the Crook and Sitgreaves National Forest in Arizona and Cibola National Forest in New Mexico. The last reports from Leon must have been about the time

a "porky" ate up his favorite saddle, or perhaps a fire just burned up his station. The report was that "he had the most even temperament—always mad."

Harlan G. Johnson, 1933. "Harley" is now Senior Forest Ranger on a timber sale in the Kaibab National Forest. He is married, since June, 1935, and to the girl back home—vintage of Blue Earth, Minnesota. "Harley" left the Fort Valley Experiment Station out of Flagstaff, Arizona in the fall of '34, and has been on the timber sale out from Williams Arizona since that time. Harley pulled a fast one on Vic. Sandberg last June when he decided to fly back to Minnesota, the night before Vic. forsook single blessedness. He was to have been Sandberg's best man. (If Vic. ever needed a friend that certainly was the time.)

Elmo Nauman, 1933, is employed on the Carson National Forest in New Mexico. Since 1933 Elmo has seen service in several C. C. C. camps in the Tonto and Apache National Forests in Arizona and in another portion of the Apache in New Mexico as well as the Carson in the state. Elmo is an old married man and already boasts of a very fine son. His better half, we understand, besides making a good wife is also a very good poetess.

Clarence E. Olson, 1931. Clarence, like all good men went and did it last year—got married. It was not the "gal back home" but rather a native of his new stamping grounds. "Ollie's" work has been in C. C. C. camps lo-

cated in the Lincoln National Forest of New Mexico. He must have been good too for he was made camp superintendent of the High Rolls Camp last year. Reports have it that the Soil Conservation Service has been making him some nice offers for his services.

Ed. Pierson, Forest Service, Alamo-gordo, N. M. Ed. has been in the New Mexico forests for a long time, being there several years before the "gang" went down in 1933. Since E. C. W. broke, Ed has been a camp superintendent and a darn good one too.

Milford Rigg, 1931, Forest Service, Phoenix, Arizona. Milford is still on one of the country's largest forests—the Tonto National Forest covering some two and a quarter million acres. During 1933 and '34 Rigg's summer home was the Indian Gardens Camp, not far from Payson, Arizona. It appears that he worked up quite a reputation as a bridge player in that fair city.

Victor O. Sandberg, 1933, Forest Pathology, Lawler Block, Prescott, Arizona. Vic. has acquired the prefix T. B. before his name in the Southwest which has no reference to the state of his pulmonary organs or brief levis, but rather to a twig blight on yellow pine which has taken heavy toll on the Prescott National Forest since June, 1935 and it looks as though he will be on it for some time to come. The forest service has been eradicating diseased material for three seasons now with C. C. C. and other government

agencies, with the results looking very promising. Besides his work at Prescott, Vic. has been doing much traveling in connection with C. C. C. activities. A Missouri girl was able to show Vic. that at least for half as long, two could live as cheaply as one. Here is what Vic has to say about it, "On June 15, 1935, Audrey Painton and I were married in Flagstaff, Arizona. We had a grand honeymoon through Utah, Nevada and California, and since have been residing here in Prescott. To you single bucks there is nothing like it."

Howard Smith, 1933. "Howie" got a real break last year when he was appointed as ranger on the Pinedale district. Before then and since 1933 he had been in several C. C. C. camps in the Coconino National Forest in many forms of activities. Howie was married last year but not to the "gal back home," nor one of the southwestern beauties. She comes from sunny California and from all appearances does a very nice job of making a ranger station what it should be.

Harold Tysk, 1932. Tysk is hobnobbing with Rigg out of the Tonto National Forest office at present. He too has spent all of his time over the Tonto Forest in different C. C. C. camps. He and Sandberg got together for a nice long evening visit at the Indian Gardens Camp last fall. Everybody in general was discussed and during the course of the evening the better portion of a watermelon was consumed. Apparently, Tysk is making a great stand for single blessed-

ness, but from reports it won't be long now.

#### Region Four

The Minnesota foresters in this region are few and far between. Charles Simpson of Coeur d'Alene sent in his buck for this year's Peavey, but said little of anything else. Perhaps "Charley" could scare up a few more Minnesota men for us.

#### Region Five

In spite of the usually windy nature of Californians whether native born or adopted citizens, all the information emanating from the land of sunshine and earthquakes is very brief.

Roy G. Wagner, 1932 is an assistant Forester, with headquarters in San Francisco, where he can be reached by addressing communications to the U. S. F. S., Phelan Bldg, San Francisco. He is working on timberland acquisition in the Redwood Region.

Ambrose Everts, 1926 is a Forest Manager. His address is at the Regional Office, Phelan Building, San Francisco, c/o U. S. F. S.

George Sargent, 1926 is working on the Klamath National Forest in Yreka, California, c/o U. S. F. S.

Gale M. Whitchurch, 1926 is a Professor of Forestry at Lassen Junior College, Susanville, California.

Chas. Beardsley is an assistant ranger on a forest somewhere in California. Anyone knowing the whereabouts of Charles Beardsley kindly remind him that the Peavey will appreciate his subscription.

H. L. Person, 1921 is a Silviculturalist in charge of Redwood Research at the California Forest Experiment Station, 331 Giannini Hall, Berkely, California.

William Hallin, 1929 is an assistant silviculturalist in Redwood Research at the California Experiment Station, 331 Giannini Hall, Berkely, California.

#### Region Six

Ernest L. Kolbe, 1927 sends us some information on the grads in his region but very little about himself. From his letterhead we assume that he is with the U. S. Forest Service, at the Pacific Northwest Forest Experiment Station, 424 Court House, Main and Sixth Streets, Portland, Oregon.

Leo A. Isaac, 1920, better known to the class of '20 as Ike the Deer-slayer, was a technical assistant on the Chelan National Forest until 1924. Since then he has been a member of the staff of the Pacific Northwest Experiment Station. He is in charge of the silvicultural studies in the Douglas fir type and carries the title of associate Silviculturalist. He is married and has one son and two daughters. Although the boy is nearly two years old, Ike is still celebrating the happy event. The men at this Station appreciate his good record as well as his many contributions over the past few years in solving the many problems in getting Douglas fir to grow on denuded lands.

Wickliffe Van Sante Litchfield has been at the Pacific Northwest Forest Experiment Station since 1930. He is the father of one boy about 6 years

old whom we know as Teddy. Litch's boy has now just about reached the D. B. H. height and is apparently growing in Site 1. He is well in the merchantable class as his own diameter would indicate in this land of big trees. Litch spent the past field season in the north central portions of Washington, type mapping the high mountain areas for the Forest Survey.

From Itasca Park days he has continued his interest in forest botany as well as in his desire to excel over all in the use of many and big words. Young Litch is already planning his schooling at Minnesota.

Arthur W. Hodgman of the class of '12 has been at the Pacific Northwest Experiment Station for the past two years. He is married and has three youngsters, Jean, 13, Mary 11, and Janet, 9. What? No embryo foresters? His work is largely in the office computing the Forest Survey's field data.

We have it from reliable sources that Gerald S. Horton, 1928, the supervisor of the newly established Illini and Shawnee Purchase Units, is "that way" about the Chippewa National Forest, and recently offered to lead a tour of Illinois citizens to Cass Lake, in order that they might be shown what a model National Forest can mean to a community.

William F. Peel, 1925, is forester for the Soil Conservation Service, located at Urbana, Illinois.

Gus Linstrom, 1928, may be encountered anywhere between the Fed-

eral Building in St. Louis and the Current River in the Ozarks. Most of Steve's time is spent in working up the detailed Master Plan for National Forest Administration in Missouri, carrying on administrative studies, making planting plans, and in other ways doing his bit and then some to reclaim the sadly misused lands of the Ozarks for future generations.

Ray Knutson, 1928, is in charge of acquisition for the Missouri Purchase Unit, and is busy buying land in the Missouri Ozarks.

John Randall, 1931, who attended Minnesota during 1925, is Superintendent of a transient camp at Salem, Missouri.

### Region Seven

From the rock-bound coast of Maine to the sunkist woods to the State of Pennsylvania extends the part of our country known technically by the ignominious name of "Region seven."

J. N. Van Alstine, class of '28, tells us that in spite of any claims to the contrary the winter weather in Virginia is the worst he has ever had to put up with. He is located at New Castle, Va. as District Ranger on the New Castle District of the Mountain Lake Purchase Unit. He tells us that with none of the land under actual Government ownership, his position as ranger is a peculiar one. Everything is hay-wire including the telephone systems, roads and forests. By the way Van, what does J. N. mean in longhand writing?

Proc. Cooper, '25, tells us of an ocean excursion of 7,000 miles in the Carribean and along the South American coast in search of rare and unusual plants and woods for various museums and arboretums. He had a couple of Yale men as first mate and field assistants, but he does not write with an accent so we don't know whether it had any affect on him. He has made several excursions in the same general direction since September, 1932 but in spite of this he has set out 12,000 spruce and pine and promises to set out 10,000 more. The rest of his letter deals with his ocean excursions and we will refrain from printing them for fear it will induce an attack of the wanderlust, and leave Uncle Sam short of good foresters.

J. L. Deen is a well known Assistant Professor of Silviculture at the Pennsylvania State College, at State College, Pa. He tells us that during the meeting of the Society of American Foresters at Washington, the Minnesota group got together for a luncheon. He did not have the list of those present so we are unable to forward this bit of news. We want to thank Deen for his cooperation and wish others would follow his example.

R. M. Lindgren is at present associated with the Bureau of Plant Industry, Division of Forest Pathology, Washington, D. C. He is rated a full pathologist and is chief assistant to Dr. Carl Hartley at that office.

H. H. Chapman, '99, is still at the Yale School of Forestry, New Haven, Connecticut. He has been leading a

vigorous life as president of the Society of American Foresters. One of his activities has been the classification of American Forest Schools.

Donald Aldworth, '14, is at 456 Fourth Ave., New York City.

George Freeman, '14, lives at 131 Hooper Ave., Toms River, N. J.

Oscar Johnson, '16, is at large somewhere in Philly.

Ralph Rhoads, '16 is still in the paper business with the Scott Paper Company, Chester, Pa. One of the few to leave this continent. Made a trip through Europe last summer.

Arthur L. Whiton, '21. Anyone knowing of his whereabouts kindly solicit one dollar for the Peavey.

D. A. Kribs, '24 is teaching botany at the Pennsylvania State Forest School, Mont Alto, Pa. In his spare time he is coaching the only football team in the U. S. made up exclusively of foresters.

V. S. Jensen is at New Haven, Connecticut with the Northeastern Forest Experiment Station.

Eugene T. Erickson, '26, is Superintendent and Forester on the Daniel S. Lamont Estate, Dutchess County, N. Y. His mail is sent to Millbrook, New York.

L. W. R. Jackson, '26, is at 3437 Woodland Ave., Philadelphia, Pa. with the Allegheny Forest Experiment Station. He is in charge of the Allegheny branch office of Forest Pathology under the U. S. Department of Agri-

culture maintained in cooperation with the Allegheny Forest Experiment Station. During the past year he has been working on the diseases of coniferous seedlings and their control.

Thaddeus Parr, '29, can be reached at (take a deep breath now) Experimentalfaltet, Stockholm, Sweden. Parr has joined the ranks of the benedicts during the past year as well as annexing an American-Scandinavian Fellowship. He is studying with Ivar Tragardh, the Swedish entomologist.

Harold Mitchell, '30 is Assistant Director of the Black Rock Forest, Cornwall-on-Hudson, New York.

Weston Donehower, '31 is Chief Forester in the Soil Conservation Service for the New York region. He has the responsibility of coordinating all forestry activities in the state which relate to soil conservation. Soil conservation, **Bath**, New York, somehow it doesn't seem just right.

John Rundgren, '33 is humored to be on the Grand Lake Purchase Unit in Maine.

Fred F. Wangaard, '33 is with the New York State College of Forestry, Syracuse University, Syracuse, New York. Fred received his master's degree this past year and is now working towards the Doctorate. He is investigating the thermal conductivity of wood.

Bill Fischer, '28 is assistant Forest Supervisor on the Pishga National Forest and is located at 27 Melrose Ave., Ashville, N. C.

Walter W. Schmid, '20 of 50 Church St., New York City, passed away in June of 1935.

Ellery Foster, '28 is in the Division of Acquisition, U. S. Forest Service, in which he is an inspector. He can be reached in care of the Washington Office.

### Region Eight

From the Sunny South where all us Minnesota men, regardless of our accomplishments are just a bunch of "Damn Yanks" we have a fair amount of material which only goes to prove that the Yanks are not so badly regarded after all.

To T. Ewald Maki, 1930. Your buck is good for one copy of the Peavey as promised, and what do you mean "threat to make the Peavey the best it has ever been," it is the best as you can now see. Maki tells us that he is a recent addition to the Southern Station's staff of researchers, he is now engaged in prying into the intimate details of the private life of longleaf pine, laying particular emphasis to the natural regeneration phase of this frustrated species.

Stan J. Buckman, 1931 is with the American Creosoting Company in Louisville, Kentucky.

Art Nelson, 1923, is said to have acquired his knack of solving hard problems while playing "god" on Nebraska's arid acres. There is ample proof around Halsey and vicinity of the fact that he succeeded where the deity failed. When Region 8 was carved out of Region 7's far flung

dominions, one of the biggest problems was reforestation. Nelson was called on to fill the important job of Assistant Regional Forester, in charge of planting. Apparently the lure of the forest proved too strong, for in the spring of '35 he abandoned his Atlanta job and accepted the Supervisor's position on the Ouachita National Forest in west central Arkansas where "corn" grows stout and shortleaf tall. It is a safe bet that with Nelson on the job, things will be looking up on the Ouachita.

A. J. "Gus" Streinz, 1923 recently resigned from the faculty of the School of Forestry, University of Georgia, returning to the Forest Service as Planting Inspector, Division of Forest Management, Region 8, Atlanta, Georgia.

R. A. Chapman ("Roy," "Fisher," "Biometrika"), 1927. Chapman is one of those rare fellows who had a vision way back in the dim primitive "Dark Ages" when most foresters still entertained the opinion that one-quarter acre plot and a thermograph record constituted research. No dreamer, but an able thinker, he had the courage and tenacity to translate his vision into reality. To that end he spent three years in comparative obscurity in the Washington office, working and studying under the able guidance of Schumacher. That he spent this time to good avail is attested by his present enviable position as well as by the unstinted praise expressed in the following words of the preface to Messrs. Bruce and Schumacher's "Forest Mensuration": "In particular we wish to express our appreciation

. . . of the searching review of the manuscript and many constructive criticisms by Mr. Roy A. Chapman of the Southern Forest Experiment Station." Chapman returned to the Southern Station in the fall of '34. Today he is the most cogent exponent in these parts for the use of statistical methods in forest research. He preaches his "message" to common foresters with evangelical fervor and telling effect. He is responsible for having removed that dread with which we average researchers regarded Sigma Xi, Chi Square, and regression equations. He has made variance and covariance into household terms. Replication is no mere vocable with him. It is rumored that he employs it even in sampling the products of his cuisine, which, however, undoubtedly has less to do with his faith in statistics than in the quality of Mrs. Chapman's cooking. By the last remark it is intended to infer that Roy is a benedict now. He became one in the summer of 1934.

A. D. Chapman, "Dale," 1927. A new entry into the ranks of entrepreneurs, Dale did not wait on prosperity to come from behind the corner and cut the grass off the street. He set up his own enterprise—a Dowicide distributing concern in which he is high potentate and sole dictator of policies. Operating on the principle that where there are many saps there is apt to be a lot of stain, he is reported doing thriving business. It is rumored that Dowicide is to blue stain what Flit is to mosquitoes or Listerine to halitosis. From his offices on the 1600 floor of lofty ( it must be) Pierre Marquette

in cosmopolitan New Orleans, Dale commands a good view of part of his territory which stretches all the way up to metropolitan Chicago. Good luck in your new venture, Dale!

T. M. Holt ("Ted," "Damn-yankee"). In Minnesota Ted used to be regarded as a regular fellow, but down here he is just another Damn-Yankee (hyphenated for the benefit of you Damn Yankees). Nevertheless, he established a good record as Assistant Ranger of the Biloxi Unit of the Desoto National Forest in Mississippi. In charge of communication, fire suppression, presuppression, as well as the dissemination of "reforestation" knowledge among the common peepul, Ted did excellent P. R. work, made many friends by his hearty approach, energetic manner, and affable nature. Most recently he has been transferred to the Holly Springs Unit of the same forest. Oh yes, Ted also is a Benedict. Significantly and/or appropriately he married on April 6, 1935, no doubt to save celebrating similar anniversaries. Many of us oldsters remember April 6, 1917.

George Olson, 1930, worked with the Lake States Forest Experiment Station from 1930 to 1934 of Forest Economics research. Has been an assistant forester with the TVA Forestry division since November, 1934. He married Katherine Ellis, Endeavour, Wisconsin, in 1932 and has a junior forestress in the form of his three year old daughter, Harriet. His present duties are concerned with the development of management plans

for TVA lands. Thus far, the work has been concentrated on Norris Lake Forest which will involve approximately 110,000 acres. This work is being expanded, however, to other reservoir areas. The outstanding feature of the management plan work is that more stress is laid on the human aspects of forestry. At present 22 forest workers and their families are happily renting homesites, including a house and garden plot, and are being guaranteed a comfortable amount of cash income from forestry and malarial control work.

Robert H. Knight, 1922. Bob is in charge of dry kiln operations for the Nickey Bros. Lumber Co. of Memphis. He has wide experience in wood seasoning and has conducted training classes in wood utilization for employees and lumber salesmen. Must be quite the old boy, being able to tell the salesmen things they don't know.

Ralph M. Nelson, 1922. Nelson was instructor in forest pathology at the Univ. of Minn from 1922 to 1926. He left Minn. to become associated with the Appalachian Forest Experiment Station as a Pathologist. He was later transferred to the field of Silviculture with the title of Silviculturalist. His principal line of research has been in the field of fire investigations in the Appalachian hardwood types. Nelson is married and has one child, a son born in 1935. For the past year or more Nelson has pinch-hit from time to time for the Station Director. During the past six months he has been acting Director almost continuously.



It is rumored that "Nellie" has become an expert in matters of finance via the poker table since joining the Appalachian Station.

Hugo J. Pawek, 1930. Hugo went to the Appalachian Forest Experiment Station following graduation, where he was associated with St. George in insect damage investigations for about six months. He left the station to become Forest Assistant at Duke University working in the Duke Forest when the C. C. C. opened up in March, 1933, Pawek was appointed Project Superintendent of the N. C. Camp No. P-56 located in Durham County, North Carolina. While there Pawek had complete charge of all forestry work carried out by this organization. In November, 1934, this camp was transferred to Manteo, N. C., on Roanoke Island where the work entered a different phase of forestry, that of sand dune fixation. A few months later he was called to Headquarters as Assistant Forester in the Emergency Conservation work in North Carolina. Pawek was married to Helen Keever, September 1, 1932.

William Maughan, 1925. After graduation Bill went to the New York State College of Forestry at Syracuse, New York, as Instructor in Forest Engineering. In September, 1928, he resigned this position to take graduate work at the Yale School of Forestry, receiving his M. F. Degree in June, 1929. In July he was appointed Instructor in applied Silviculture at Yale. While at Yale, Bill was intimately associated with Prof. R. C. Hawley in

work on the Eli Whitney Demonstration Forest and was co-author with him on the Yale School of Forestry Bulletin No. 27 "The Eli Whitney Forest, a Demonstration of Forestry Practice." Bill was also author of the bulletin, "Control of White Pine Weevil on the Eli Whitney Forest." In January, 1931, he became associated with Duke University as assistant Director of the Duke Forest and Assistant Professor of Forestry. In September, 1935, this latter title was changed to Associate Professor of Forestry. Bill was married in August, 1925, to Margot Fairfield of Minneapolis. He has two children, both girls, born in 1929 and 1930.

Bernard Huckenpahler, 1931. Following graduation, "Huck" was employed as field assistant, Division of Forest Insects at Asheville, N. C. He came back to Minnesota for graduate work in 1931 and '32, getting his M. S. Degree in June, 1933. He was then employed as Junior Entomologist with the Appalachian Forest Experiment Station, investigating State and Federal C. C. C. operations in relation to forest insect damage. Of late he has been with the Soil Conservation Service, being in charge of the Forestry Department on the Reedy Fork project at Greensboro, N. C. On June 29, 1934, he was married to Miss Doris Gardner of Asheville, N. C.

Lyll E. Peterson, 1931. Since graduation his work includes timber cruising job in Oregon; assistance in forest insect investigations at the Appalachian and Central States Experiment

Stations; assistance in silvicultural research at the Appalachian Station; and Technical foreman in Prescott, Arizona, and Santa Fe, New Mexico. At the present time he is working as one of a party conducting a systematic study of forest conditions throughout the Tennessee Valley. A field map is made with the aid of aerial mosaics and maps are being prepared to show broad forest types, condition classes present and potential ownership and use and all wood using industries. A report is being prepared for each of the 123 counties involved which describes such types of information as follows:

- (1) General description of the county.
- (2) A more detailed description of forest resource including a rough estimate of present volumes and expected growth.
- (3) Tables showing types of ownerships, types of land use, and lists of tracts of forest land, 1000 acres and over.
- (4) Discussion of land use trends and problem areas within each county.
- (5) Consideration of the economics of forest industries, its past development, present status, and future outlook.

This project, when completed, will furnish a very usable picture of forest conditions as they now exist in the Tennessee Valley. A technique is being developed by means of which

the study can be made for only a fraction of a percent per acre.

Ernest Dahl, 1931. Since he left Minnesota, "Ernie" has been working along the lines of Forest Pathology, more specifically in White Pine Blister Rust Control. From May, 1933, to October, 1935, his position was that of District Blister Rust Control Agent in northeastern Minnesota. Since October, 1935, he has been with the Soil Conservation Service in North Carolina. At present he is Forester for the Stony Creek Conservation Project with headquarters at Burlington. His principal forestry activities are planting, timber stand improvement and gully control.

#### Region Nine

Daniel Bulfer, 1930, who responds most readily to the nickname, "Dan" spends his working hours, and many evenings wrestling with the problems of an assistant Supervisor in charge of Lands and Management on the Ohio Purchase units. Danny delved into early American history to arrive at the most suitable name for the National Forest in southeastern Ohio, The Wayne National Forest.

Raymond Osborne, 1931, better known as "Ray", is District Ranger on the Muskingum Unit, with headquarters at Marietta, Ohio. He has been assigned to an area rich in state history, rich with memories of George Washington's survey, and of the original Ohio Land Company. It is quite fitting that the new national forest should begin its expansion in the re-

gion where the first settlers in the Ohio Valley came.

Roland Schaar, 1933, who is ranger of the Hocking Valley Unit, with headquarters at Athens, Ohio, is called a hustler by his Supervisor because his efforts in behalf of the National Forests in Ohio are producing results.

Walter R. Jacobson, 1935, is technical foreman at Camp Athens, in the Hocking Valley Purchase Unit. He is a recent addition in the three C camp but is reported to be taking hold readily. Taking hold of what?

J. J. Ahern, 1935, Technical Foreman at Camp Lawrence, Ironton, Ohio, is another newcomer to the Ohio River country. His headquarters are near the home of "the very Odd McIntyre" as W. Winchell says, and we wonder if this will have an influence on his journalistic tendencies. As yet we have not received any contributions titled, "CCC Life Day by Day" from him, but we fear the worst.

Dave Arivee, 1911, is Assistant Supervisor on the Indiana Purchase units with headquarters at Bedford, Indiana.

G. H. Wiggin, 1913, is resident Superintendent on the Robinson Forest at Quicksand, Kentucky. We will refrain from facetious remarks in this case as we might have him for a boss some day, we hope.

Walter M. Zillgitt, 1932, is up to his neck in administrative duties as superintendent of Camp Dukes, on the upper Peninsula Experiment.

Robert St. Amant, 1932, a lone figure on snow shoes in the vast wilderness of Superior National Forest (winter 1933-1934) as chief of timber survey.

William Jolly, 1933. Bill trying to sleep on one blanket spread over a bed of the roughest poles ever cut—and laughing until his insides ached at the snoring heap of humanity in the form of the night watchman (N. R. A. camp, winter 1933-1934.)

Joseph Lozinski, 1933, snowshoeing back to camp after a bad night in Ely and throwing "ballast" from his pack to lighten the load. Also claiming that his "anchor was dragging" because he couldn't keep up with the rest of the gang. (timber survey 1933-1934, Superior National Forest).

William Isaacson, 1932, so happy with the thought of going to town (Ely) that he begins to run on his snowshoes—a cloud of snow and "Ike" is horizontal.

Roland Schaar spending a frigid Sunday morning in the Superior National Forest perched high in the rafters of a forest service log cabin that looked more like an egg crate. Heat rises and so does Schaar. He was transferred last spring to Ohio on a new purchase unit.

Roy M. Carter, 1935, stationed at Camp Kentucky, C. C. C., Hiawatha National Forest, Michigan. The Marquette girls are getting a break.

Ray Stevens, 1923, E. C. W. Inspector. You're liable to trip over him in most any camp.

Albert Grant, 1928. Al couldn't stand to be single any longer. He was married a little over a year ago to Miss Ruth Ofstad. He has gained weight rapidly since that time. (this good old home cooking) He still keeps in condition chasing reconnaissance crews.

Ero Laitala, 1933. He's doing a swell job of thinning a stand of high-land cedar.

John Dobie, 1935. He is one of our prize game technicians. His headquarters are at S-57, Arago, Minn.

Marius Morse, 1935. Has the same job as Dobie with headquarters at S-51, Brimson, Minn. He recently found four hibernating bears—ask him about it sometime.

Lincoln Mueller, 1935. "Linc" is still Tech. Foreman on the Peschtigo, hoping for a break, but still mighty glad to have his present job. During the winter he was working on a timber sale, cruising the whole thing on a cut and leave basis.

Ragner Romnes, 1935. He is Tech. Foreman at Phelps Veterans Camp.

Lawrence B. Ritter, 1929. He is associate pathologist and has charge of blister rust in Minnesota.

Alan Laidlaw, 1932. Assisting Warren Chase in his supervision of Forestry and Game Mangement activities of the Soil Conservation Service in the La Crosse District. He's the kind of fellow who travels "miles" to attend game conferences.

Herman Olson, 1932. (Wild Lifer) School teachers in Beaver Bay? Preposterous! U. S. F. S., Duluth, Minn.

Orlo Soland, 1932. He's just been married. (I'll bet his new wife gets more attention than his job) He is still with the Oliver Mining Co., in Duluth.

Ross Haven, 1933. (Jackpine) Tech Forester on the Nicollet Forest.

George Forus, 1933. George is moved around so often that his mail trails him by a couple of camps. Don't fail to try your luck on George's newly improved Baptism River next time you get up "North Shore Way."

Bill Webb, 1935. Another of our game technicians. He is located at S-52, Orr, Minnesota, and is doing game work at eight state camps. Don't be surprised if Bill "pops up" with something bigger and better than his already famous snowshoe rabbit census method.

Russel W. Johnson, 1935. "Russ" makes a fine forester "back in the woods." Incidentally, you should see his newly improved Flute-reed River.

Charles Racey, 1925. Assistant Ranger on the new Drummond District of the Chequamegan. Until recently he had been assistant ranger on the Mondeaux District.

Bill Emerson, 1925. Bill is holding down his job as Superintendent at the Mondeaux River Camp.

Herbert Maturen, 1924. Camp Superintendent of Sheep Ranch Camp

Phillips, Wis., Chequamegon National Forest. "Mat" is still interested in Minnesota and gets over for at least one football game every fall.

Walter Wilson, 1925. "Walt" is the Rehabilitation Specialist of the Chequamegon National Forest.

Clarence M. Evenson, 1934. "Charley" is camp superintendent of Riley Creek Camp in the Chequamegon.

J. Allen Jackson, 1933. "Stub" is the Assistant Ranger of the Flambeau District, Chequamegon National Forest.

Norman O. Nelson, 1935. "Norm" is Master Plan Technician (quite a title) for the U. S. Forest Service, Park Falls, Wisconsin.

Gunnar Fengar, 1923. Right hand man to the assistant Regional Forester in charge of Forest Management and Research. Gunnar has been largely responsible for Region 9's big planting progress.

Maxon Y. Pillow, 1924. Still at Madison Forest Products Laboratory and at the present time is working on the properties of ash species.

Harold Ostergard, 1924. Handling the forest planting and the stand inventory work for the state of Minnesota.

Clarence E. Knutson, 1927. "Knut" recently became Supervisor of the Chippewa National Forest. He also has a daughter, by the way.

Leslie W. Orr, 1927. "Les" left the University last year and is now

working on entomological problems (chiefly white grub control) for the Regional office.

Edgar Sheridan, 1927. "Sheny" was in charge of the shelterbelt work for the Rural Rehabilitation Corporation.

Ernest George, 1928. George is in charge of tree planting work in Mandan. He was able to give much practical advice to the Plains Shelterbelt people through his experience in prairie planting.

Ray Knutson, 1928. According to latest reports, "Smut" is District Ranger on one of the Missouri Purchase Units. (Nicknames have a way of sticking on, don't they Ray?)

Gustaf Limstrom, 1928. "Steve" is working out of the Supervisors Office on the Missouri Purchase Units.

Paul Rudolph, 1928. Paul is in charge of planting investigation in the Lake States.

John Neetzel, 1929. In charge of the Upper Peninsula Branch Station. His major field is selective logging of virgin hardwoods.

Clarence Chase, 1929, is working out of the Supervisors Office. He has recently been made instructor in master-planning at the Regional Training school on the Nicollet National Forest.

Maurice Day, 1931. He has been working on the Shelterbelt investigation.

Russel Quick, 1931. Russ is working for the Forest Survey in the St. Paul office.

Alexander Karkula, 1931. "Alex" is planting assistant on the Superior National Forest.

Edward Iverson, 1931. "Skipper" according to latest reports was E. C. W. inspector on the Manistee Unit.

Karl Ziegler, 1934. Karl has been on the Shelterbelt investigation, was in the field until recently, and now is in the St. Paul office working on soil analysis in the laboratory.

Gerald Horton, 1927. Since last winter "Gerry" has been Forest Supervisor of the Shawnee Purchase Unit. He has a hard time keeping track of his tools because John Kuenzel is always borrowing them to keep his own station going.

Roy Dingle, 1935. Roy is doing his darndest to get out of debt, and as soon as that little bill is paid off there is going to be an addition to the Roy Dingle family. (maybe it would be better for him if he never gets out of debt).

Jack Densmore, 1935. We hear that Jack is doing a little night observation of "wild game" around Readsburg, that is rather far from home but that "chev" of Jack's can get him there and back. Jack has had his headquarters moved to Coon Valley, Wisc.

E. P. Duclos is with the National Park service, State Park Division, in charge of the Milwaukee Procurement Office, as senior clerk.

Hyman Goldberg, 1926. Spent the past two years on the Chippewa, taking a leading role in organizing the ECW set-up on the Forest. He is now working in the Public Relations Department in the Regional office at Milwaukee. You're a better man than I am Gunga Din.

Jerry Homola, 1928. Gets his mail at Wirt, Minn. He is practicing forestry at the Wirt Camp on the Dora Lake District where he is a Technical foreman. (Practicing for what?)

John Crew, 1929, has his wife and family up in the north woods country. He has handled many recreational projects on the Forest the past year. Johnny gets his mail at Schley, Minnesota, where he is a Technical Foreman, Recreation, wild life in the forest, hmmm?

Milton Anderson, 1930. Has worked as Technical Foreman at the Day Lake Camp on the Marcell District the past year.

Bobby Clough, 1930. Was on the Forest the past year as commanding officer of Mock Camp. He has recently been transferred to a new location near Ely, Minn.

Milton Forder's, 1930. The Mrs. had a blessed event last spring—a junior forester. The proud father may be found at Remer Camp, Remer, Minn., where he is a technical foreman.

Victor Freeman, 1930 is doing a splendid job heading up the planting

project on the Chippewa National Forest. If anyone knows a sure cure for grub worms, drought, rodents, etc., wire Vic at once.

Samuel Frisby, 1931 is doing great things around Red Lake for the Indian Forest Service. We see Sam in Bemidji now and then with Slim Bender who is on the same project.

Charley Knoblauch, 1931 is making ing good as Assistant Ranger on the Marcell District. He is still single.

Ed Niles, 1931 is Technical foreman at the Walker Camp, Walker, Minn.

Donald Campbell, 1932, has spent most of the year at the Supervisor's office on Timber Management and also took an active part in formulating the Master Plan for the Forest. "Soup" is now Superintendent of the new Robideau Camp at Black Duck, Minn. He is still looking for THE girl.

Don Ferguson, 1932. Took the fatal step this year. He has spent the greater part of the year setting up Fish and Game Management plans for the entire forest. His plans for sustained yield of our wild life is a masterpiece and sets up objectives which every sportsman and forester will hope are achieved. Don was recently transferred to Bena, Minn., where he will be Assistant Ranger on the Bena District.

John Kopitke, 1932, has moved around so much the past year it is hard to keep track of him. He has been Superintendent of three camps which have been moved to new locations or

projects. He is now located at Schley, Minn.

Leonard Moore, 1932, has been assistant ranger and also ranger of the Cass Lake District the past year. He has recently taken over the new Black Duck district. Len fell by the wayside last spring and exchanged vows. The Moores may be located at Black Duck, Minn.

Gordon Carr, 1933, is working on the beautiful Cut Foot Sioux District. He spent the past year as superintendent at the Inger Camp. The Carr's address is Deer River, Minn.

Dave Gibley, 1933, is superintendent of the Cut Foot Sioux Camp. "Spaniel" has done a great job of timber stand improvement of the wonderful coniferous reproduction on the Cut Foot Sioux District. The Gibney's are at Deer River, Minn.

Don Price 1934, has been handling the job of recreation specialist on the Chippewa for the past year. He was recently transferred to the scenic Cut Foot Sioux District as assistant district ranger. His address is Deer River, Minn. Don is still shifting for himself.

Floyd Colburn, 1934 gets his mail at Bena, Minn., where is a technical foreman at the Bena Camp. Floyd has not yet found the girl of his dreams.

Wayne Sword, 1934 is now located at Cass Lake, Minn, at the supervisor's office, where he is in charge of timber management. Wayne had spent the past year as ranger of the new Mardell District.

Paul St. Amant, 1931. Paul is ranger of the new Dora Lake District. The Dora Lake Ranger Station is one of the most beautiful stations on the forest—the dwelling is a most palatial structure. Paul spends his evenings practicing the art of forestry.

Ralph Lorenz, 1930. Ralph is still teaching Forest Protection to the seniors at Minnesota. The answer to one of his questions invariably informs him that he one of the leading protectionists of the country. Right or wrong, the boys certainly play their cards correctly.

Merrill E. Deters, 1928. Merrill is assistant forester in the Department of Erosion Control at Washington, D. C. He recently obtained three months leave and during this time he has been teaching Silviculture to the foresters at Michigan State.

Oliver Cook, 1928. Outside of putting out the Peavey for us each year and buying new cars out of the printing profits, Oliver still manages to get in a little "Red Dog" over at . . . ? Oliver's limitless knowledge on alums is invaluable.

Frank Kaufert, Ph. D., 1928. The erudite "Doctor"—he acquired the

appellation last summer, divides his time between his "Basic Wealth" class in the General College and teaching "Forest Products" to the Bunyanites.

Otis McCreary, 1923. As assistant Dean of Student Affairs, Otis attempts to keep students in "line." Whether he does or not appears to be a clouded secret.

Walter M. Moore, 1909. Moore is with the Army Air Corps, and he's located at Osborne, Ohio. He has the laudable habit of sending 3 bucks each year for his copy of the Peavey. It's like pulling teeth to get a buck out of some of youse guys—oh well.

George Hauser, 1916. Assumed a new position this fall—he's Director of the Health Service. Outside of caring for these duties he still manages to give assistance to Bernie Bierman as line coach.

T. Schantz-Hansen, 1915 got his doctor's degree at Yale last summer and worked out an extensive problem on the effects of thinning on Jack pine. A little subtle psychology in that Ph. D.—he can scare the Cloquet gang into staying home nights.

IN MEMORIAM

In fond memory of the Foresters who passed away in  
the course of the past year.

WALTER W. SCHMID

— 1920 —

JOHN L. ENGLSBY

— 1933 —





*A Shot Past the Forestry Building . . .  
Dr. Schmitz's Office on the Third Floor.*

ALUMNI DIRECTORY

Class of 1899

Chapman, H. H., Yale School of Forestry,  
New Haven, Conn.

Class of 1904

Erickson, M. L., Lisbon, North Dakota.

Class of 1905

Cuzner, Harold, College of Agriculture, Laguna  
Province, Forestry Dept., Los Banos, Philli-  
pine Islands.

Class of 1906

Cox, W. T., 2186 Doswell Ave., St. Paul, Minn.  
Detwiler, S. B., 1028 N. Daniel St., Clarendon,  
Va.

Rockwell, F. I., Marion, South Dakota.

Tierney, D. P., Castle Rock, Minn.

Class of 1907

Canavarrro, de S., 2736 Huuanu Ave., Hono-  
lulu, Hawaii.

Class of 1909

Moore, Walter M., U. S. Army Air Service,  
Box 234m, Osborne, Ohio.

Orr, George R., Deceased.

Class of 1910

Baker, Norman M., Deceased.

Benson, Arnold O., Forest Products Laboratory,  
Madison, Wisc.

Berry, J. Bert, Winter Haven, Florida.

Brewster, D. R., 1315 Bank of Commerce Bldg.,  
Memphis, Tenn.

Deering, Robert, U. S. Forest Service, Ferry  
Bldg., San Francisco, Calif.

Jacobson, N. G., 630 Lumbermens Bldg.,  
Portland, Oregon.

Krauch, Herman G., Southwest Forest Exper-  
iment Station, University of Arizona, Tucson,  
Arizona.

Lewis, Charles L. Jr., Beaver Brook, Wisc.

Underwood, Clarence L., 305 North Fourth  
Ave., Yakima, Wash.

Class of 1911

Arivee, David A., Ass't Supervisor, Indiana  
Purchase Units, Bedford, Indiana.

Beard, Frank W.

Bowen, Clarence W.

Brownlie, Jas. R.

Campbell, Hugh B.

Eisenach, Walter, Duluth, Minn.

Gilles, J. R., State Office Building, St. Paul,  
Minn.

Hamilton, C. L.

Hauge, Adolph G.

Hofmann, J. V., Head Dept. of Forestry,  
North Carolina Agricultural College, Raleigh,  
N. C.

Kenety, Wm. H., Northwest Paper Co., Cloquet,  
Minn.

Martin, Dean W., Dept. Internal Revenue,  
Washington, D. C.

Oppel, A. F., State Office Bldg., St. Paul,  
Minn.

Underwood, Wm., Deceased.

Weber, Henry, State Office Building, St. Paul,  
Minn.

Williams, Donald.

Young, Paul.

Class of 1912

Beyer, Walter F., Fire & Marine Insurance Co.,  
New York, N. Y.

Blodgett, Harvey P., Detroit Lakes, Minn.

Clymer, Wm. R., 1626 Laurel Ave., St. Paul,  
Minn.

Conzet, G. M., Division of Forestry Dept. of  
Conservation, State Office Building, St. Paul,  
Minn.

Harris, S. G., Page and Hill Co., Minneapolis,  
Minn.

Hodgman, Arthur W.

Norman, Sigvald, Page and Hill Co., Minne-  
apolis, Minn.

Orr, John Elliot.

Pearce, Wm. R., Faribault, Minn.

Pettibone, Herman N., Chicago Mill & Lumber  
Spellerberg, Frederick E., Deceased.  
Co., Chicago, Ill.

Stevenson, J. A., Bureau of Plant Industry,  
Washington, D. C.

Wilson, Robert.

Class of 1913

Buhler, Ernest O., 1680 Portland Ave., St. Paul,  
Minn.

Erstad, Andrew.

Griffin, Thos. A., 3529 Humboldt Ave. S.,  
Minneapolis, Minn.

Hall, Edwin Howard.

Haworth, Robert, Cleveland, Ohio.

Henchel, Norman, Zumbrota, Minn.

Moir, John, Administration Bldg., University  
of Minnesota, Minneapolis, Minn.

Nuffer, Harry D., Michigan State Forest  
Service.

Renshaw, David, Deceased.

Rogers, Ernest, Deceased.

Savre, Oliver H.

Simpson, Chas., Couer d'Alene National Forest,  
Couer d'Alene, Idaho.

Tobin, Paul, Lewiston, Idaho.

Wiggin, W. H., Supt. on Robinson Forest,  
Quicksand, Kentucky.

Class of 1914

Aldworth, Donald, 456 Fourth Ave., New  
York City, N. Y.

Allen, P. T.

Braden, Kenneth.

Cummings, Thos. S. C., Fort Benton, Montana.

Freeman, George, 131 Hooper Ave., Toms  
River, New Jersey.

Graham, S. A., University of Michigan, Ann  
Arbor, Michigan.

Lindeberg, George C., Spencer, Iowa.

Mueller, A. T.

Ringold, Stanley L., 32 E. 4th St., St. Paul,  
Minn.

Rose, Logan, Mankato, Minn.

St. Marie, Adrian A.

Spink, Harold W., Kansas City, Mo.

Torggrim, J. R., Deceased.

Class of 1915

Chance, Jenner D.

Dennis, Henry M., Tacoma, Wash.

Dunn, Frank M., Rapid City, South Dakota,  
E. C. W. Camp T. F.

Hansen, Thorvald S., Forest Experiment Sta-  
tion, Cloquet, Minn.

Hawkinson, Carl J.  
Sischo, Paul C.  
Wyman, H. E.

Class of 1916

Bartelt, Harry, 2091 Buford Ave., St. Paul, Minn.  
Bell, Ernest, Deceased.  
Blake, Phillip.  
Broderick, Martin.  
Crane, Leo, U. S. Army.  
Gjerlow, Atle B., C. C. Mengle Co., New Orleans, La.  
Hyde, Luther, Scenic State Park, C. C. C. Camp, Big Fork, Minnesota.  
Johnson, Oscar, Philadelphia, Pennsylvania.  
Rhoads, Ralph, Scott Paper Co., Chester, Pa.  
Schwartz, E. R., Marinette, Wisc.

Class of 1917

Anderson, P. O., Extension Division, University Farm, St. Paul, Minn.  
Burnes, J. D., Page Hill Co., Minneapolis, Minn.  
Forsberg, Carl.  
Tuttle, L. S., 5325 2nd Ave. So., Minneapolis, Minnesota.

Class of 1918

Danson, Robert.  
De Flon, Rev. L. L.  
Hauser, Dr. George, Line Coach, Football Team, University of Minnesota, Minneapolis, Minn.  
Pendergast, Earl.  
Swanson, Herbert, Appleton, Wisconsin.

Class of 1919

Backus, Romaine, Los Angeles, Calif.

Class of 1920

Brayton, S. C., U. S. F. S., Chippewa National Forest, Cass Lake, Minn.  
Frudden, Clyde M., Green, Iowa.  
Grabow, Rudolph H., Nicollet National Forest, Rhinelander, Wisc.  
Isaac, Leo A., Pacific Northwest Forest Experiment Station, 514 Lewis Bldg., Portland, Oregon.  
Palmer, Rev. Paul, 1725 N. W. 27th St., Oklahoma City, Okla.  
Schmid, Walter W., Deceased.

Class of 1921

Anneberg, Robert D.  
Armstrong, J. J.  
Bryan, P. H., U. S. F. S., Russelville, Arkansas, Ozark National Forest.  
Dwyer, Daniel E., St. Paul, Minn.  
Erikson, Leyden, National Lumber Mfg. Assoc., Washington, D. C.  
Grapp, Lloyd, U. S. F. S., Milwaukee, Wisc.  
Ostrowski, Francis, Waldorf Paper Co., St. Paul, Minn.  
Person, Hubert, Cal. Forest Exp. Station, 331 Giannini Hall, Berkely, Calif.  
Wackerman, A. E., Forester for Southern Pine Association, New Orleans, La.  
Whiton, Arthur L., Chicago Mill and Lumber Co., Chicago, Illinois.

Class of 1922

Anderson, A. A., 3714 East St., Mariemont, Cincinnati, Ohio.

Anderson, Otto, Deceased.  
Knight, H. Robert, Nickey Bros. Lumber Co., Memphis, Tenn.  
Nelson, Ralph M., Appalachian Forest Exp. Station, Asheville, N. C.  
Sheehan, John A.  
Thayer, Burton, 2400 Bourne Ave., St. Paul, Minn.

Class of 1923

Burton, Sidney, 2521 Sumner St., Lincoln, Nebr.  
Chesebrough, Herbert S.  
Dockstader, Chas.  
Fegraeus, Thorbern, Deceased.  
Fenger, Gunnar, U. S. Forest Service, Federal Bldg., Milwaukee, Wisc.  
Frost, Orcutt W., Wood Conversion Plant, Cloquet, Minn.  
Hamilton, Hubert.  
McCreery, Otis, Ass't Dean Student Affairs, University of Minnesota, Minneapolis, Minn.  
Nelson, Arthur E., U. S. F. S. Regional Office, Atlanta, Georgia.  
Probstfield, E. E., Kisanan, Sumatra, c/o HAPM, Netherlands, E. Indies.  
Stevens, Raymond, Inspector U. S. F. S., Milwaukee, Wisc.  
Streinz, Augustine, Louisiana State University Professor of Forestry.  
Sunday, Clarence W., Sioux Falls, S. D.  
Tilden, Floyd, Lake Itasca, Minn.

Class of 1924

Berggren, Harold.  
Bezold, Harold.  
Bryan, Philip, U. S. F. S., Russelville, Ark., Ozark National Forest.  
Christopherson, Clifford, 1129 West Lawrence, Appleton, Wisc.  
Hoar, Walter G., Coeur d' Alene, Idaho.  
Kribs, D. A., Forest School, Mount Alto, Penn.  
Leffelman, L. J., Regional Forester, R. F. D. 3, Sumter, South Carolina.  
Lynne, Victor A., Winona, Minn.  
Maturen, Herbert, Camp Supt. of Sheep Ranch Camp, Phillips, Wisc.  
Nelson, Albin C., Blister Rust Control, Dept. of Conservation, 338 State Office Bldg., St. Paul, Minn.  
Ostergaard, Harold, Minn. State Forest Service, State Office Bldg., St. Paul, Minn.  
Pillow, Maxon Y., Forest Products Laboratory, Madison, Wisc.  
Ritchie, Wm. A.  
Upton, Nelson, Deschutes National Forest, Bend, Oregon.  
Weswig, Carl, Soil Conservation Service, Chatfield, Minn.  
Youngers, P. W.

Class of 1925

Barrett, Wilford, Carborundum Co., Niagara Falls, N. Y.  
Baumhofer, L. G., U. S. Forest Insect Laboratory, Fort Collins, Colo.  
Blandin, H. M.  
Cooper, George Proctor, East Lee, Mass.  
Gay, Chester, Moose Lake, Minn.  
Gordon, J. R., Chippewa National Forest, Cass Lake, Minn.

# OLDER THAN THE FORESTS

Is the Experience Behind Every  
Woolrich Garment

For over 106 years, lumbermen, prospectors, hunters, and outdoorsmen have kept themselves warm and dry in Woolrich waterproof, all wool garments.

From the warm southern sunshine to the snow fields of Alaska, from the forests of Maine to the forests of Oregon, men are getting comfort and serviceability from their famous Woolrich lumbering shirts and suits.

Made from pure wool, every step from the yarn, to the cloth, to the garment, is started and completed

in our own mills, and backed by 106 years of experience.

Before you cut your next tree, or before you make your next field trip, clothe yourself in a Woolrich all-wool, waterproof lumbering jacket.

*Because of its popularity with those men who know the rawness of the great outdoors, the lumberman, our jackets are named for them.*

*Can be had in the following checks: red and black, green and black, and black and white.*

See Your Local Dealer

## Woolrich Woolen Mills

WOOLRICH

PENNSYLVANIA

Jensen, Victor S., Northeastern Forest Exp. Station, 335 Prospect St., New Haven, Conn.  
 Litchfield, Wickliffe, U. S. F. S., Portland, Ore.  
 Maughan, William, Duke Forest School, Duke University, Durham, N. C.  
 Peel, Wm. F., Soil Conservation Service, Urbana, Illinois.  
 Racey, Chas., Chequamegon National Forest.  
 Wilson, Walter, U. S. Forest Service, Park Falls, Wisc.  
 Thomson, Roy B., Forestry Dept., Iowa State, 2017 Country Club Blvd., Ames, Iowa.

Class of 1926

Bjornstad, E. G.  
 Blage, Rev. Arland, 5209 46th Avenue South, Minneapolis, Minn.  
 Chase, Warren W., Box 863, La Crosse, Wisc.  
 Christianson, D. A.  
 Coffey, John J., 1731 Laurel Ave., St. Paul, Minn.  
 Erikson, Eugene T., Millbrook, New York.  
 Everts, Ambrose B., U. S. Forest Service, Phalen Bldg., San Francisco, Calif.  
 Goldberg, Hyman M., Public Relations Dept., Milwaukee, Wisc.  
 Henry, Leslie, Cochetopa National Forest, Carnero Dist., La Carita, Colorado.  
 Ilstrup, Marshall, Deceased.  
 Janssen, George R.  
 Kaner, Arnold, Minneapolis, Minn.  
 Kelsey, H. B., 2817 17th Ave. So., Minneapolis, Minn.  
 Kuenzel, J. G., Central Forest Exp. Station Columbus, Ohio.  
 Lindgren, R. M., Bureau of Plant Industry, Washington, D. C.  
 Lystrup, Herbert.  
 Manual, Ronald, 514 Grace St., Albert Lea, Minn.  
 Shaddock, Nobel, 520 E. 31st St., Minneapolis, Minn.  
 Sargent, George, U. S. Forest Service, Yuka, Cal.  
 Umbehocker, Kenneth, Deceased.  
 Watts, Paul Kenneth.  
 Whitchurch, Lassen, Junior College, Susanville, Cal.  
 Zierke, E. A., 2074 Princeton Ave., St. Paul, Minn.

Class of 1927

Carlson, C. Homer, Camp Supt., Winnie Camp, Chippewa National Forest.  
 Chapman, Roy A., Southern Forest Experiment Station, New Orleans, La.  
 Clement, Raymond, Minn. Forest Service, State Office Bldg., St. Paul, Minn.  
 Deen, J. Lee, Dept. of Forestry, Penn. State College, State College, Penn.  
 Duclos, E. P., 3355 North Cramer St., Milwaukee, Wisc.  
 Eaton, John J., Bemis Bag Co., Cincinnati, Ohio.  
 Hartupee, Chas. H.  
 Himebaugh, W. K. Fort Snelling, Minnesota.  
 Holmberg, Ralph E.  
 Horton, Gerald, 204 E. Lincoln St., Harrisburg, Illinois.  
 Jackson, Lyle W. R., Univ. of Penn., Botany Dept., 38th and Woodland Ave., Philadelphia, Penn.

Knutson, Clarence E., U. S. Forest Service, Cass Lake, Minn.  
 Kolbe, Ernest, U. S. Forest Service, Federal Bldg., Portland, Oregon.  
 Krueger, Carl G., Shoshone National Forest, Cody, Wyoming.  
 Lawson, Edward L., Lake States Forest Exp. Station, St. Paul, Minn.  
 Leaf, George.  
 Lotti, Thomas, U. S. Forest Service, Cadillac, Michigan.  
 Martilla, Uno, Camp Supt., Mesaba Unit, Superior National Forest, Virginia, Minn.  
 Nelson, Stanley C.  
 Orr, Leslie W., Bureau of Entomology, Milwaukee, Wisc.  
 Sheridan, Edgar, 404 Federal Building, St. Paul, Minn.  
 Swanbeck, H. J.  
 Trench, Paul E.  
 Verral, Arthur F., Dutch Elm Disease Laboratory, New Brunswick, New Jersey.  
 Whitney, Fenton, Whitman National Forest, Baker, Oregon.  
 Wilson, Earl G., Towner, N. D., c/o U. S. F. S.

Class of 1928

Blatter, Paul, 835 E. 2nd Street, Port Angeles, Washington.  
 Clark, Edgar, Wood Conversion Company, Sioux Falls, South Dakota.  
 Cook, Oliver, Flour City Paper Box Co., Minneapolis, Minn.  
 Cooper, Arthur.  
 Deters, Merril, Mich. State College, E. Lansing, Mich.  
 Fischer, William, U. S. Forest Service, Asheville, North Carolina.  
 Foster, Ellery, 2123 Leroy Place N. W., Washington, D. C.  
 George, Ernest, Northern Great Field Plains Station, Mandan, N. D.  
 Grant, Albert, Kabetogama State Forest, Camp S-52, Cusson, Minn.  
 Halvorson, George.  
 Harvey, Harry.  
 Homolo, Jerome, Chippewa National Forest, Cass Lake, Minn.  
 Kirkham, Dayton, U. S. Forest Service, Buffalo, Wyoming.  
 Kaufert, Dr. Frank H., Div. of Forestry, Univ. Farm, St. Paul, Minn.  
 Knudson, Ray, U. S. Forest Service, St. Louis, Mo.  
 Limstrom, Gustaf, U. S. Forest Service, St. Louis, Mo.  
 Norgorden, Emil, Mary's Creek C. C. C. Camp, Willamette National Forest, Detroit, Ore.  
 Piras, Stanley.  
 Rathbun, Harold, National Pole and Treating Co., Minneapolis, Minnesota.  
 Robinson, Winfield R., Indian Service, 1717 N. 4th St., Cherokee, N. C.  
 Rudolf, Paul, Lake States Forest Exp. Station, Univ. Farm, St. Paul, Minn.  
 Strimling, Harry, 1008 Goodrich Ave., St. Paul, Minn.  
 Van Alstine, J. Neil, New Castle, Virginia.  
 Whitehill, Benj., Washakie National Forest, Du Noir, Wyoming.

# LUFKIN

## TAPES and RULES for every measuring requirement

Tree Tapes  
Board Rules, Log Rules  
Forest Cruiser Sticks  
Tapes and Rules for all general  
measuring purposes.



Send for Catalog

**THE LUFKIN RULE CO.**

SAGINAW, MICHIGAN, U. S. A.  
106-110 Lafayette St., New York

# "Paul Bunyan's" LOG CABIN BOOK

A GUIDE FOR CABIN BUILDERS

40 pages, 140 illustrations, 22 plans, interior wall treatments, log cabin doors, windows, and extension corners.



Send for your copy today and plan  
your cabin. Coin or stamps . . . . . **15c**

Add 10c for 40-page book of  
Paul Bunyan Stories.

**THE RED RIVER LUMBER COMPANY**

Dept. X-321,

807 Hennepin Ave.,

Minneapolis, Minnesota

Class of 1929

Anderson, Waldemar, Willamette National Forest, Signal, Oregon.  
 Andrews, Shirlee, 2231 Scudder Ave., St. Paul, Minn.  
 Wogensen, Adolph K., Burley, Idaho, c/o U. S. F. S.  
 Christensen, Clyde, Plant Pathology, University Farm, St. Paul, Minn.  
 Crew, John, U. S. F. S., Cass Lake, Minn.  
 Chapman, Dale, 7 South Dearborn St., Chicago, Illinois.  
 Hallin, William, Cal. Forest Exp. Station, 331 Giannini Hall, Berkeley, Cal.  
 Light, James.  
 Marks, Elmer, Rocky Mt. Experiment Station, Missoula, Montana.  
 Neetzel, John, Lake States Forest Exp. Station, Univ. Farm, St. Paul, Minn.  
 Nelson, Henry Q., 2225 4th St. West, Duluth, Minn.—Temperance Camp, U. S. F. S., Tofte, Minn.  
 Parr, Thaddeus, Sweden.  
 Peterson, Harry A., Bell Telephone Co., Minneapolis, Minn.  
 Ritter, Lawrence, Minn. State Forest Service, State Office Bldg., St. Paul, Minn.  
 Roan, Audrey, Gamble Store, Rochester, Minn.  
 Thomas, Danford, Newald, Wisconsin.  
 Tilden, Ray, 253 Louis St., St. Paul, Minn.  
 Williams, David M., U. S. F. S., Tofte, Minn.

Class of 1930

Aamot, A. Loren, U. S. Forest Service, Hot Springs National Park, Arkansas.  
 Anderson, Carl H., Tech. Forester, Good Harbor Camp, Grand Marais, Minn.  
 Anderson, Milton, Day Lake Camp, Chippewa National Forest, Minnesota.  
 Anderson, Robert, U. S. Forest Survey, Lake States Forest Exp. Station, St. Paul, Minn.  
 Bulfer, Daniel, Ass't Supervisor, Ohio Purchase Units.  
 Benson, Eynar, 301 Fifth St. So., Virginia, Minn.  
 Boettcher, Paul, Grand Marais, Minn.  
 Brener, William, Wisconsin Conservation Dept., Madison, Wisc.  
 Clough, Robert, C. C. C. Camp 765, Superior National Forest, Schley, Minn.  
 Chase, Clarence, U. S. Forest Service, Three Lakes, Wisc.  
 Forder, Milton, Remer Camp, Remer, Minn. (Longville Camp).  
 Freeman, Victor, U. S. Forest Service, Cass Lake, Minn.  
 Lorenz, Ralph, Division of Forestry, Univ. Farm, St. Paul, Minn.  
 Lorenz, Rolland, Office of Forest Pathology, Bureau of Plant Industry, Washington, D. C.  
 Maki, Tenho, 837 Gravier St., 400 Union Bldg., New Orleans, La.  
 Mitchell, Harold, Cornwall-on-Hudson, N. Y.  
 Olson, George, TVA Forestry Div., Knoxville, Tenn.  
 Porisch, John, Chippewa National Forest, Walker, Minnesota.  
 Pawek, Hugo, North Carolina State Forest Service.

Puphal, Irwin, Huson, Mont.  
 Royer, William, Mt. Hood National Forest, Rhododendron, Oregon.  
 Tsaker, Arvid, Superior National Forest.  
 Wiese, Clarence, Chequamegon National Forest, Wisconsin.  
 Wittenkamp, Richard, State Forest Service, Rhinelander, Wisc.  
 Woodford, Reinold, Midwest Wax Paper Co., Fort Madison, Iowa.

Class of 1931

Anderson, Clarence E., U. S. F. S., Charleston, South Carolina.  
 Anderson, Frank H., Gunflint District, Grand Marais, Minnesota.  
 Day, Maurice, Lake States Forest Exp. Station, Univ. Farm, St. Paul, Minn.  
 Dahl, Ernest, Soil Conservation Service, Burlington, N. C.  
 Dolence, Frank, U. S. Forest Service, Ely, Minn.  
 Donehower, Weston, U. S. Soil Conservation Service, Bath, New York.  
 Huckenpahler, Bernard, Soil Conservation Service, Greensboro, N. C.  
 Beardsley, Chas., Mt. Shasta, Calif.  
 Bjorgum, Eldor.  
 Buckman, Stanley, 105 South Shawnee Terrace, Louisville, Ky.  
 Fredrickson, Franklyn, Box 1236, Huron, S. D.  
 Frisby, Samuel, Indian Forest Service, Red Lake, Minn.  
 Gray, Donald.  
 Hunt, Robley, Temperance District, Tofte, Minn.  
 Janelle, Harvey, T. F. Temperance District, Tofte, Minn.  
 Keehn, Henry, Lewisville, Minnesota.  
 Knoblauch, Chas., Marcell District, Chippewa National Forest, Cass Lake, Minn.  
 Lidberg, Carl L.  
 Mayer, Arthur, Lake George, Minnesota.  
 Moore, Lee K., Soil Conservation Service, Rochester, Minn.  
 Nelson, Alfred Z., U. S. Forest Service, Washington, D. C.  
 Niles, Edward, Tech. Foreman, Walker, Minn.  
 Olson, Clarence, Forest Service, Alamogordo, New Mexico.  
 Osborne, Raymond, District Ranger on Muskingum Unit, Marietta, Ohio.  
 Peterson, Lyall, Tenn. Valley Authority, 610 Arnstein Bldg., Knoxville, Tenn.  
 Quick, Russel, 1166 Ivy St., St. Paul, Minn.  
 Randall, Chas., U. S. Forest Service, Duluth, Minn.  
 Rigg, Milford, Forest Service, Phoenix, Ariz.  
 Risbrudt, Clifford, Assistant Ranger, Superior National Forest, Ely, Minn.  
 St. Amant, Paul, Grotten, Minn. U. S. F. S.  
 Schneider, Arthur, U. S. Forest Service, Duluth, Minn.  
 Sterba, Webster, Univ. of Minn.  
 Stewart, Donald, State Forest Service, 338 State Office Building, St. Paul, Minn.  
 Stoudt, Jerome, U. S. F. S., Ely, Minn.  
 Wellberg, Ernest, Cascade Camp, U. S. F. S., Grand Marais, Minn.

Why You Should Specify

## **RANGER - SPECIAL WATER BAG and HAND PUMP**

### **FEATURES THAT COUNT**

1. Made of seamless fabric (not metal), it fits wearer's back like a cushion—no chafing; no discomfort. Absolutely no leakage or splash.
2. Bag automatically deflates as water is pumped out—no slapping or swaying of water load.
3. Water load is carried lower than in metal tanks—prevents "pulling" at shoulders. While this is ordinarily called a 5-gallon water bag, it is possible to carry as much as 6½ gallons.
4. Unique hand pump (choice of 3 styles) forces steady, strong 50 ft. stream—extinguishes blaze from safe distance.
5. Complete dimensions (rolled up) 20 in. x 7 in. x 5 in. You can store 3 to 5 RANGER SPECIALS where you would store one metal tank.
6. Improved closing device enables operator to easily put hand into bag and remove sticks, leaves, etc.

The "RANGER SPECIAL" Bag can be quickly filled and operated by one man and when worn saves energy and prevents fatigue by conforming to the back like a cushion. No chafing, digging into the back or loss of balance when running. The great resistivity of canvas to temperatures of water and its absolutely leak-proof qualities safeguard the health of operator.

Make a test and know the best Knapsack Handpump.

SOLE MAKERS:

## **FENWICK - REDDAWAY MANUFACTURING CO.**

46 Paris Street Newark, N. J.

*Large stocks always on hand assuring immediate  
shipment on receipt of order.*

*Descriptive circulars with full particulars sent on request.*

## **THE TIMBERMAN**

AN INTERNATIONAL LUMBER JOURNAL

623 S. W. Oak Street  
Portland, Oregon

Specializing in the publication of technical,  
permanently valuable articles on

**LOGGING  
LUMBER MANUFACTURE  
LUMBER UTILIZATION  
FORESTRY  
LUMBER MARKETING**

AN AID IN SCHOOL

AN AID IN AFTER LIFE

**GET THE HABIT EARLY!**



Woolery, Ronald, U. S. Forest Service, Lake States Exp. Station, St. Paul, Minn.

Class of 1932

Adams, Harry, U. S. F. S., Milwaukee, Wisc.  
 Anderson, Carl Roan, Camp Loretta, Chequamegon National Forest, Park Falls, Wisc.  
 Cahill, Dorothea, Mrs. Harold Engstrom (see Engstrom).  
 Campbell, Donald, Rabideau Camp, Black Duck, Minn.  
 Engstrom, Harold, 616 No. 35 St., Lincoln, Nebr.  
 Grigg, Joseph, Good Harbor Camp, Grand Marais, Minn.  
 Karkula, Alexander, U. S. Forest Service, Duluth, Minn.  
 Cann, John, U. S. Forest Service, Camp F-9, Ely, Minn.  
 Carlson, Conrad, Bena District, Chippewa National Forest, Minn.  
 Cline, H. Ray, Soil Conservation Service, Lake City, Minn.  
 Ferguson, Donald, Bena, Minn.  
 Isaacson, Wilbur, Ely, Minn., Box 248.  
 Jackson, Clayton, Stony District, Ely, Minn.  
 Kopitke, John, Schley, Minn.  
 Krefting, Lauritz, Gunflint District, Grand Marais, Minnesota.  
 Laidlaw, Alan, U. S. Soil Erosion Service, La Crosse, Wisconsin.  
 Lazzaro, Chas., Sand Lake Camp, U. S. F. S., Virginia, Minn.  
 Moore, Irving, Wagner Lake Camp, Wist, Minn.  
 Moore, Leonard, Black Duck, Minn.  
 Olson, Herman, U. S. F. S., Superior National Forest, Duluth, Minn.  
 Olsen, Stanley, Chippewa National Forest, Deer River, Minn.  
 Roe, Arthur, Superior National Forest, Ely, Minn.  
 St. Amant, Robert, U. S. F. S., Cass Lake, Minn.  
 Seaberg, George, Poplar Lake Camp, Superior National Forest, Grand Marais, Minn.  
 Soland, Orlo, Oliver Iron Mining Co., Duluth, Minn.  
 Sanders, R. Dale, U. S. F. S., Rhinelander, Wisconsin.  
 Smith, Howard, Pinedale Ranger Station, Pinedale, Arizona.  
 Stritman, Harry, Fort Snelling.  
 Tofte, Albert, Tofte, Minn.  
 Tysk, Harold, U. S. Forest Service, Phoenix, Arizona.  
 Wagner, Roy, Timber Survey, Regional Office, San Francisco, Cal.  
 Zillgitt, Walter M., U. S. Forest Service, Dukes, Mich.

Class of 1933

Alexander, Frank, T. V. A. Forestry Dept., Arnstein Bldg., Knoxville, Tenn.  
 Ackernecht, Wm.  
 Callinan, Harry, 22 West Walnut, Harrisburg, Illinois.  
 Carr, Gordon, U. S. F. S., Cass Lake, Minn.  
 Christopherson, Ralph, Camp S-54, Coleraine.  
 Duval, Thure, Fernberg Camp, Ely, Minn.

Gibney, David, Deer River, Minn.  
 Fry, John R., Soil Conservation Service, La Crosse, Wisc.  
 Haven, Ross, Ghost Creek Camp, Chequamegon National Forest, Park Falls, Wisconsin.  
 Hill, Leon, Zuni Ranger District, Cibola National Forest, New Mexico.  
 Horn, Arthur.  
 Iversen, Edward, U. S. Forest Service, Manistee, Mich.  
 Johnson, Harlan, U. S. Forest Service, Williams, Arizona.  
 Jackson, J. Allen, Flambeau District, Chequamegon National Forest, Park Falls, Wisc.  
 Jolly, William, 610 Arnstein Bldg., Knoxville, Tenn.  
 Kukachka, Emil, Cloquet Valley State Forest, Camp S-51, Brimson, Minn.  
 Koski, Sulo, C. C. C. Camp, Cass Lake, Minn.  
 Laitala, Ero, Camp S-81, Ray, Minn.  
 Lindstrom, Lorenz, Superior National Forest, Isabella, Minn.  
 Lozinski, Joseph, U. S. Forest Service, Ely, Minn.  
 McMillan, John, Forest Products Laboratory, Madison, Wisconsin.  
 Miley, Harry, 2246 W. Grantham St., St. Paul, Minn.  
 Nauman, Elmo, Carson National Forest, New Mexico.  
 Niehaus, Theodore, Lassen National Forest, Halls Flat, California.  
 Plant, George, E. C. W. Camp S-53, Side Lake P. O., Hibbing, Minn.  
 Price, Donald, U. S. F. S., Cass Lake, Minn.  
 Ridlington, Walter, Red Lake Indian Reservation, Minn.  
 Rundgren, John E., Camp S-51, Noble, Ky., Cumberland National Forest.  
 Sandberg, Victor, U. S. Forest Service, Prescott, Arizona.  
 Scharr, Roland, Ranger of Hocking Valley Unit, Athens, Ohio.  
 Settergren, Reuben, Tofte, Minn., U. S. Forest Service.  
 Smith, Howard, Pinedale, Arizona.  
 Stoehr, Henry, Lake States Forest Exp. Station, St. Paul, Minn.  
 Stuart, Alice, Northeastern Forest Exp. Station, 835 Prospect St., New Haven, Conn.  
 Wangaard, Fred, N. Y. State College of Forestry, Syracuse Univ., Syracuse, New York.  
 Youngren, Russel, U. S. Forest Service, Grand Marais, Minn.  
 Forus, George, Camp S-63, C. C. C., Finland, Minnesota.  
 Iverson, Edward, E. C. W. Inspector, U. S. F. S., Manistee, Mich.

Class of 1934

Colburn, Floyd, Tech. Foreman, Bena, Minn.  
 Evenson, Clarence Mark, Camp Riley Creek, Park Falls, Wisc.  
 Herion, George, P. O. 423, Gallup, New Mex.  
 Holt, Ted, Camp F-14, Gloster, Miss.  
 Nelson, Ralph William.  
 Seastrom, Paul, U. S. Forest Service, Rhinelander, Wisc.  
 Sword, Wayne, Cass Lake, Minn.  
 Wiljama, Leo E., Vermillion Camp F-56, Tower, Minn.

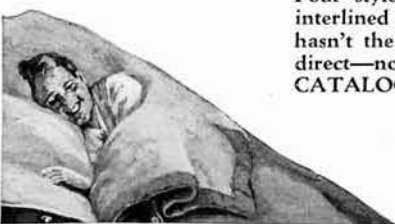
## YOUR SLEEPING ROBE - - Can It Pass These Tests?

CAN it keep you as comfortably warm in the woods as you sleep in town, through all kinds of weather? . . . Can you put it in an ordinary standard packsack? . . . Can it tip the scales at less than a pair of 4-point blankets? . . . The answer is SURE . . . IF it's the world famous

### **WOODS** Arctic Down SLEEPING ROBE

For 30 years this robe has been the North's best buy in camp bedding. It's the ORIGINAL and never approached ready-made "eiderdown." Made flat like a comforter, but snaps or zippers up into a draft-proof, roomy, delightfully soft, cozy and amazingly light bag. Protecting you all around is thick, springy Woods Everlive down from Northern waterfowl—Nature's best insulation.

Dry and healthy to sleep in—easily ventilated. Wind-proof. Water repellent. Conforms closely to every body curve—totally free from padded stiffness, so forms no cold "unoccupied" spaces under your covers. Good for YEARS. Guaranteed for satisfaction.



Four styles, six sizes, \$16.50 to \$62.50. Also Woods Robes interlined with pure wool batt, \$16.75 and \$25. If your Dealer hasn't the genuine Woods Arctic Down Sleeping Robes, order direct—no additional shipping charge anywhere in U. S. A. CATALOG FREE.

**WOODS MFG. CO., Ltd.**

3641 Lake St., OGDENSBURG, N. Y.

In Canada: Ottawa, Ont.



All Patterns. Highest Quality for the Last Half Century

ALL KINDS OF  
LOGGING TOOLS  
CHAIN HOOKS, SWIVELS,  
COLD SHUTS & EVERY  
TOOL KNOWN FOR LOG-  
GING. ALSO PULASKI  
MULTI-USE TOOLS

▼  
SINGLE & DOUBLE BIT  
**AXES**

**WARREN AXE AND TOOL CO., WARREN, PA.**

*The Northwest's Largest Selection of*

REGULATION FORESTRY

UNIFORMS AND HATS

Write for Price List and Catalogue

**Maurice L. Rothschild & Co.**

MINNEAPOLIS

Robert at 7th—ST. PAUL

CHICAGO

Watterberg, Phillip, Box 253, Holdrege, Nebr.  
Ziegler, Karl, Lake States Forest Experiment  
Station, Univ. Farm, St. Paul, Minn.

Class of 1935

Ahern, John J., Central Forest Experiment  
Station, Columbus, Ohio.  
Algren, Verne N., Hutchinson, Minnesota.  
Asp, Claude S., Camp S-56, Warroad, Minn.  
Baldwin, Donald, North Dakota School of  
Forestry, Bottineau, North Dakota.  
Bergh, Thor, Soil Cons. Service, Houston,  
Minn.  
Carr, Gordon H., Inger E. C. W. Camp F-27,  
Deer River, Minn.  
Carter, Roy M., Camp Kentucky, Hiawatha  
National Forest, Mich.  
Clark, Robert H., Camp S-98, Wilton, Minn.  
Dellberg, Robert, Box 253, Holdrege, Nebr.  
Densmore, Jack, Soil Conservation Service,  
C. C. C., Coon Valley, Wisc.  
Dingle, Roy H., Soil Conservation Service,  
Ontario, Wisconsin.  
Dobie, John, Game Technician, Minn. State  
E. C. W. S-57, Arago, Minn.  
Dundas, Jack P., Soil Conservation Service,  
Black River Falls, Wisc.  
Ellertson, Birger, Forestry Division, Univ. of  
Michigan, Ann Arbor, Michigan.  
Erson, Roy J., Tech. Forester, Deer Lake, Minn.  
Ferber, Arthur E., Grand Plain Fields Station,  
Mandan, North Dakota.  
Graves, Ralph L., U. S. F. S., Big Rice Lake  
Camp, Chisholm, Minn.  
Hahn, Dewey, Soil Conservation Service, Red  
Wing, Minn.  
Hall, Wilson, Mora, Minnesota or Graduate  
School, U. of M.

Hansen, Henry L., Division of Forestry, Univ.  
of Minn.  
Hawkinson, Arthur, Biological Survey.  
Holbrook, Edward, Division of Forestry, Univ.  
of Minn.  
Jacobson, Walter R., Tech. Foreman, Camp  
Athens, Hocking Valley Purchase Unit.  
Johnson, Russel W., Tech. Forester, Camp 62,  
Hoveland, Minn.  
Krogfoss, Oswald K., Wellington, Texas.  
Lauer, Wilfred H., Soil Conservation Service,  
P. O. Box 82, Winona, Minn.  
Lund, Peder N., Soil Conservation Service,  
La Crosse, Wisconsin.  
Lynch, Donald B., Soil Conservation Service,  
C. C. C. Camp, Lanesboro, Minn.  
Merz, Robert W., U. S. Forest Service, Grand  
Marais, Minn.  
Mohl, Waldemar, 4917 Nokomis Ave. So.,  
Minneapolis, Minn.  
Morse, Marius, E. C. W. Camp S-51, Brimson,  
Minn.  
Mortenson, Thomas P., Askov, Minnesota.  
Mueller, Lincoln A., United States Forest Ser-  
vice, Rhinelander, Wisc.  
Nelson, Norman O., United States Forest Ser-  
vice, Park Falls, Wisc.  
Nerenberg, Erwin, 139 Eva St., St. Paul, Minn.  
Panek, Edward.  
Parker, Lansing A., Soil Conservation Service,  
La Crosse, Wisconsin.  
Pugsley, Gerald W., U. S. F. S., Houston, Mo.  
Romnes, Ragner, Phelps Camp, Phelps, Minn.  
Sturtevant, Arthur W., 2611 Polk St. N. E.,  
Minneapolis, Minn.  
Webb, William L., E. C. W. S-52, Orr, Minn.  
Wheeler, Russ. E., 1703 Berkeley Ave., St. Paul,  
Minn.  
Zeff, Milton, U. S. Forest Service, Kenton,  
Michigan.



## **RICHTER'S BAKERY**

CLOQUET, MINN.



*Baking at Its Best*

---

## **L. G. BALFOUR COMPANY**

*Fraternity Jewelry*

Official for

GIB ROBERTSON  
1312 Fourth St. S. E.  
Gladstone 5017

XI SIGMA PI  
PEAVEY CHARMS  
TAU PHI DELTA  
FARM HOUSE

---

## **WEST END GROCERY**

CLOQUET, MINN.



*Staple and Fancy Groceries*

---

## **RAITER PHARMACY**

ROSCOE O. RAITER, Ph. R.

A Drugstore You Can Patronize with Confidence

Cloquet Avenue at 9th

---

Compliments of

## **CLOQUET CO-OPERATIVE SOCIETY**



## **ST. ANTHONY PARK STATE BANK**

*"Your Community Bank"*

COMO AND CARTER AVENUE

The unfaltering march toward the ultimate in Good Paper proceeds at Northwest. Tirelessly, month after month, the quest for still greater improvement goes on. Knowing that the best preparation for good work tomorrow is to do good work today, the paper products of this company are intentionally the finest that men and material can produce.



THE  
NORTHWEST PAPER CO.  
CLOQUET, MINNESOTA

SPRING QUARTER, 1935-36  
FORESTRY

FRESHMEN

Richard Ahern  
Kenneth Alstad  
Grant Anderson  
Robert Ashbach  
Bertram Baird  
Robert Barron  
Forrest Bean  
Lawrence Bearnes  
Daniel Benjamin  
Trygve Bergh  
Milton Berglund  
Richard Beveridge  
Lem Blakemore  
Robert Boss  
George Boyeson  
Lyman Brandt  
David Brink  
John Broberg  
Thomas Buckman  
Richard Buse  
Kenneth Buzzell  
Arnold Carlson  
Carl M. Carlson  
Edward C. Carlson  
Donald Carroll  
Fred Charles  
Richard Clary  
John Connors  
Gustaf Danielson  
Donald Diessner  
Robert Dunne  
Elliott Dworsky  
William Dye  
Paul Eckblad  
Clifford Egeland  
Robert Erickson  
Oswald Esterl  
Donald Folsom  
Joe Gabiou  
Orval Gamradt  
Orville Gilpin  
Owen Gorden  
John Gurton  
Clarence Gustafson  
Harvey Hanson  
Andrew Haughom  
Joe Hess  
Wayne Holberg  
Richard Hultengren  
George Isaacson  
Phillip Jahn  
Warren Jewett  
Buford Johnson  
Clifford Johnson  
Gordon Johnson  
Herbert Johnson  
Joseph Jones  
Cavour Justus  
Robert Kasper  
Erick Kienow  
Richard Kreitter  
Jack Kundert  
Orville Lake  
William Lehmkuhl  
J. Glenn Liden  
Hillard Lilligren

Laurel Madson  
Robert Manston  
James Marcum  
Keith Markuson  
Carrol Mattlin  
Loren McDonald  
Edwin Miettunen  
Lyman Miles  
Lucian Ray Miller  
John Miller  
Wilmar Monson  
Robert Morley  
John Murphy  
Francis Neisen  
Norris Nelson  
John Norblom  
Oscar Nordvig  
Forrest Olsen  
Morris Olson  
Olaf Olson  
Vincent Olson  
Leonard Orvold  
Donald Overholt  
Kenneth Peisch  
Leonard Pepkowitz  
Richard Peters  
Howard Post  
Perry Pratt  
Robert Rheinberger  
Ralph Rich  
George Rogosheske  
Willis Ruhberg  
Phillip Schaefer  
William Schmidt  
Howard Schmitz  
Robert Schoensee  
Carl Schwerdfeger  
Kurt Sealander  
Ogden Shutes  
Herbert Sorensen  
Henry Stokke  
Gordon Strom  
Robert Sweitzer  
Robert Swenson  
Donald Tatting  
Russell Thompson  
Gordon Trygstad  
Edward Valentine  
David Vesall  
Robert Wagle  
Robert Warner  
Edwin Wegermann  
Willard West  
Keith White  
Wayne White  
Eugene Willey  
Richard Witherell  
Roman Wrabek  
Alden Wuoltee

SOPHOMORES

Clarence Aase  
George Abel  
Robert Adamek  
J. T. Adkins  
Willard Alm  
Edwin R. Anderson

Philip C. Anderson  
Vincent Anderson  
Everett Bergstrom  
John Berkey  
Burgess Blackburn  
Joe Blaisdell  
Ross Boobar  
Arthur Borchardt  
Rudie Brauer  
Robert Browne  
J. Robert Bruce  
R. Everett Byfield  
Albert L. Carlson  
Edward J. Carlson  
Kenneth C. Carlson  
Marvin Carlson  
Philip O. Carlson  
Donald Carswell  
James Case  
Floyd Clark  
Robert E. Clark  
Earl Dahl  
Harry Davis  
Keith Dech  
Calvin De Laittre  
Bob De Leuw  
Dale Denzer  
Edward Deppe  
Fred Dickinson  
Donald Dodge  
Ian Dods  
Robert Dosen  
Parker Drago  
Roy Eggen  
Karl Ekstrom  
Raymond Ellstrom  
Judson Elston  
Harold Emerson  
Alf Engebretson  
John Ercegovich  
C. Richard Freeman  
Barton Galle  
Kenneth Garbisch  
Joseph Gjertson  
Cuthbert Grafton  
Don Gregg  
Howard Hagen  
John Hagen  
Raymond Halverson  
William Hamilton  
Philip Hamm  
Axel Hansen  
Marvin Harmon  
Edward Henry  
Donald Higgins  
Robert Hiller  
James Hilton  
Louis Hoelscher  
Axel Hupponen  
William Inghutt  
Bert Jahn  
Charles Johnson  
George Johnson  
Victor E. Johnson  
Arne Juola  
Edward Kafka  
James Keogh

William Kepman  
 Klayton Kidd  
 Donald Kjeldsen  
 T. Kent Kjelland  
 Rudolf Klebe  
 Gerald Kleven  
 Milton Kral  
 William Kramer  
 Edward C. Kron  
 Frederick Kuck  
 Arvid Kuutti  
 Edmund Laine  
 Forest Lane  
 Robert Lacy  
 Russell Larson  
 Harry Lear  
 Allan Lee  
 Hilton Lemke  
 Raymond Leskela  
 Nathan Licht  
 David Lohn  
 Edward Loomis  
 Joe Loomis  
 Edward Loula  
 Henry Lovald  
 Vernon Lystad  
 Geddes McMillan  
 Chester McNelly  
 Roger Meacham  
 John Mead  
 Martin Meldahl  
 Melvin Menge  
 John Miles  
 Richard Myler  
 Earle W. Nelson  
 Vernon W. Nelson  
 Leonard Niemela  
 Walter Niemi

Carl Nordell  
 John Oase  
 Kermit Otto  
 Frederick Patchin  
 Scott Pauley  
 Frank Perkins  
 George Peterson  
 Sidney Peterson  
 Sidney Pidgeon  
 Robert Piercy  
 Samuel Poirier  
 Duane Rauenhorst  
 Douglas Robbins  
 Willard Roberts  
 Evan Sanders  
 John Sauer  
 Norton Schmidt  
 Roger Schmuck  
 Jack Schneeweis  
 Vincent Schurr  
 Gordon Schwabe  
 Roman Schwartz  
 Dawson Seaver  
 Edwin Sedlacek  
 Donald Seebach  
 Orlando Severson  
 Robert E. Shaw  
 Sylvester Smolich  
 John Sweeney  
 Clifford Synnes  
 Eugene Taylor  
 John Taylor  
 Carl Thiry  
 Richard Tierney  
 Joseph Teth  
 Robert Wahlberg  
 Dodd Walker  
 George Walker

Vernon Watters  
 Fred Wentink  
 Malcolm Williamson  
 Orville Withee  
 Raymond Wood  
 Eino Wuori

JUNIORS

Axel Andersen  
 Roger F. Anderson  
 Victor C. Anderson  
 Theodore Appel  
 Dwight Bensen  
 George Biskey  
 Norman Borlaug  
 Vincent Bousquet  
 Morley Brandborg  
 Michael Cherwynak  
 Julius Dinger  
 Carl Dion  
 Ralph Eisele  
 Albert Engstrom  
 Thomas Evans  
 Joseph Falbo  
 James Fisher  
 Clayton Granros  
 Niilo Haapala  
 Alvin T. Hagen  
 E. Arnold Hanson  
 Guy Hawkins  
 Charles Hutchinson  
 Hayden Jensen  
 Raymond Jensen  
 Douglas Johnson  
 Roy Johnson  
 Philip Joranson  
 Charles Kirk  
 Joseph Kissin

Robert Kolbe  
 Richard Kroll  
 B. Francis Kukachka  
 Jack E. Larson  
 Daniel Leach  
 William McFarland  
 Harry Mosebrook  
 Fred Mueller  
 George Mueller  
 Theodore Myren  
 Alvin Nelson  
 Eugene C. Nelson  
 Thomas Ohl  
 Robert Peterson  
 William Potter  
 Joseph Remus  
 John Riss  
 Harold Roussopoulos  
 Thomas Schrader  
 Philip Schroeder  
 Robert Selover  
 Bernard Shema  
 Richard C. Smith  
 Lawrence Terch  
 Farguhar Thomson  
 John Toren  
 Clinton Turnquist  
 Lawrence Wilson  
 Robert Zabel  
 Richard Zietlow

UNCLASSED

Leonard Beatty  
 Calvin Bowen  
 Lucian Marsh  
 Lewis Osmer  
 Charles Shearer  
 Paul Vruwink

## APPRECIATION

THE GOPHER PEAVEY STAFF wishes at this time to express their sincere appreciation and thanks for the cooperation of the students, alumni, faculty, and others who helped in putting out the 1936 GOPHER PEAVEY. Cuts have been furnished through the courtesy of American Forests, Ray D. Handy, The Agrarian, School of Agriculture, and Division of Publications, University Farm. We also wish to thank the concerns advertising in this annual, as their support made possible the publication of the 1936 GOPHER PEAVEY.