

MAGR  
GOVS  
MN 2000 MISC-1986

UNIVERSITY OF MINNESOTA  
DOCUMENTS

APR 1 1985

ST. PAUL CAMPUS LIBRARY

*University of Minnesota*  
**International  
Programs**

*for agricultural professionals*

Agricultural Extension Service

This archival publication may not reflect current scientific knowledge or recommendations.  
Current information available from University of Minnesota Extension: <http://www.extension.umn.edu>

Request for information

Please fill out and return to 405 Coffey Hall, University of Minnesota, 1420 Eckles Ave., St. Paul, MN 55108, U.S.A. *Fred Hoefler Ph.D.*

Name \_\_\_\_\_

Address \_\_\_\_\_

City \_\_\_\_\_

Postal Code \_\_\_\_\_

State \_\_\_\_\_

County \_\_\_\_\_

Country \_\_\_\_\_

Telephone \_\_\_\_\_

Telex \_\_\_\_\_

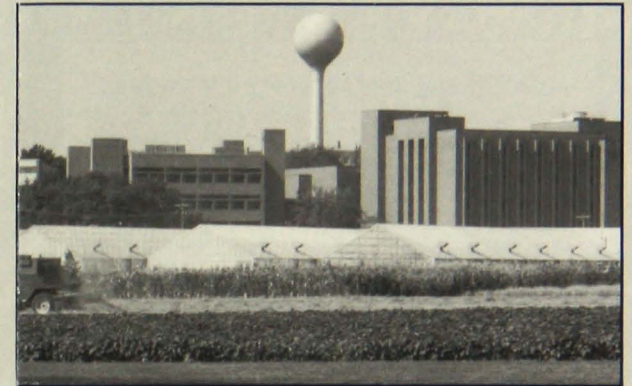
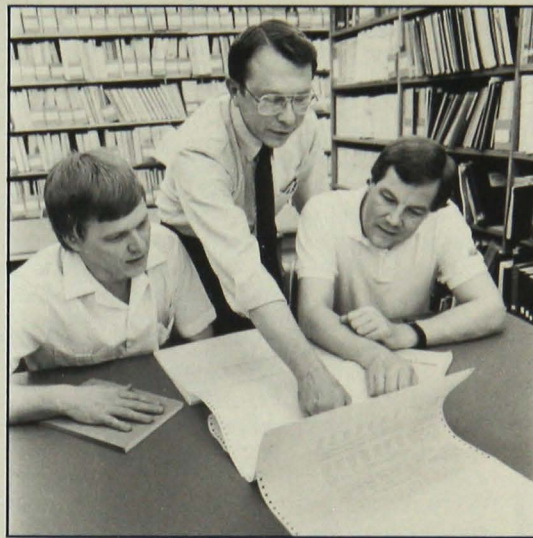
Employer Name \_\_\_\_\_

Position/Title \_\_\_\_\_

The University of Minnesota, including the Agricultural Extension Service, is committed to the policy that all persons shall have equal access to its programs, facilities and employment without regard to race, religion, color, sex, national origin, handicap, age or veteran status.



## ***The University of Minnesota***



*The University of Minnesota has an historically strong commitment to both teaching and research and has produced a diversity of educational resources unsurpassed on any other campus. The Twin Cities (Minneapolis/St. Paul) campus is truly cosmopolitan. Here you can meet people from every one of the 50 states and from more than 100 foreign countries. Located in the heart of a dynamic metropolitan area of about two million people, the University of Minnesota is one of the largest and most educationally comprehensive campuses in the United States.*



## ***The Department of Agriculture and Applied Economics***

*The Department of Agriculture and Applied Economics, one of 11 in the College of Agriculture, has a distinguished tradition of teaching, research and extension in food and agriculture policy and has a national leadership position in domestic food and agriculture policy work. It has maintained a macroeconomic perspective on agriculture and a strong program on international trade, development, policy and has a strong national and international reputation in these areas.*



## Are you a professional person with agricultural responsibilities and a specific educational need?

International Program Development, Office of Special Programs, Agricultural Extension Service, University of Minnesota, develops and conducts courses, seminars and conferences to meet the particular requirements of individuals and groups from the public, private or academic sectors in countries outside the United States. These courses are offered primarily in the U.S., but can also be conducted in other countries. Past enrollments have included a range of senior and middle level participants including some who occupy high-level administration ministry positions in their home countries to regional provincial officers and farm managers.

Courses take the form of conferences, workshops, seminars or classes and may run from one day to three months in length. A competency based academic/practical training program for farm managers varies from three to twenty-one months.

All of these educational courses are described below and others not listed are offered through the Office of Admission and Records, College of Agriculture.

### DEVELOPMENT PROJECT EVALUATION SEMINAR

A two week seminar focusing on a practical approach to project evaluation through presentations, training exercises and strategies for establishing evaluations useful to decision makers. The course will concentrate on how to make evaluations practical and accurate and will include attention to all steps in a project evaluation from initial conceptualization through design and data collection to utilizations of the findings for program improvement and policy decision making. A variety of approaches and methods will be presented. September 15-26, 1986

### AGRICULTURAL RESEARCH POLICY SEMINAR

An intensive seminar addressing major issues facing agricultural research policy leaders and the methods available for planning and evaluating long and short term research projects. Ways of generating political and financial support for the research system are also explored in this seminar which is structured to meet the needs of both international and United States participants. Both groups will discuss the latest policy-making methods with economists, researchers, and educators known for their expertise in the agricultural policy research field. Sessions on the politics of agricultural research policy will stimulate discussion on such important issues as agricultural research funding, the balance between public and private sector research and the impact of technology on developing countries. This two week course is directed toward senior level U.S. and other developed country agricultural research administrators, including senior agricultural research officers, deputy chief agricultural research officers and national or regional research (experiment) station directors. Offered April 14-25, 1986

For detailed course and registration information contact:

Fred Hofer Ph.D.  
Agricultural Extension Service  
Office of Special Programs  
University of Minnesota  
1420 Eckles Avenue  
St. Paul, MN 55108  
U.S.A.  
Telephone: 612-373-0725  
Telex: TWX 298421

## Course Offerings

University of Minnesota  
Agricultural Extension Service

### APPLIED ECONOMIC ANALYSIS OF FOOD AND AGRICULTURAL POLICY

The purpose of this course is to identify and apply alternative quantitative economic approaches, techniques, and models used in the analysis of food and agricultural policy. Primary emphasis is on the development of current econometric analytical procedures using time-series and cross-sectional data and the review of empirical economic research on the role of prices in agricultural production, consumption, trade, input factor allocation, and economic growth. The major topics covered in this course include the methodology and analysis of supply and demand functions, consumer demand functions, and econometric and mathematical programming models of domestic and international agricultural commodity markets.

This course is designed specifically for persons who are working in the area of applied economic and statistical analyses of food and agricultural policy and planning in developing countries. The level of instruction assumes that the participants are familiar with basic neoclassical microeconomic theory and introductory econometric (multiple regression) analysis. June 9-July 11, 1986

### AGRICULTURAL POLICY SEMINAR

The Agricultural Policy Seminar focuses on substantive policy matters; the process of policy formulation and implementation and the role of agricultural policy decisions in social and economic development. Participants will develop the knowledge and skills to evaluate the policy making process, integrate the agricultural sector with major national goals, assess solutions for major policy problems and to apply appropriate analytical techniques to provide better information for policy problem solving. The five-week course is intended for senior level agricultural policy makers such as Ministers or Secretaries of Agriculture; Assistant Ministers; Senior Agricultural Officers, at the National or Regional level. Offered June 16-July 11, 1986

### FARM MANAGEMENT IN PRACTICE SEMINAR MANAGING THE FARM BUSINESS

This four week course will identify the current state of farm management including: the farm manager in the U.S.A. and other countries; tools and techniques of the profession; financial management; enterprise economics; appraisal techniques, professional practices; fees; liability; relation to government regulations and policies. Use of the microcomputer in management is emphasized throughout the seminar. The microcomputer emphasis will be on application software such as electronic spreadsheets and data base management systems. Participants will also be exposed to decision aid software. June 16-July 11, 1986

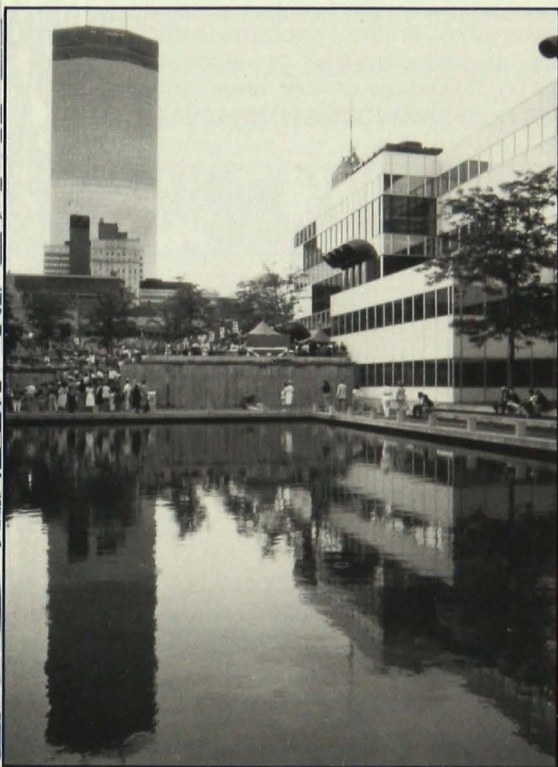
### STAFF TRAINING AND DEVELOPMENT

A workshop to assist participants in understanding the components of a staff development program, in devising an organizational policy for staff development and in initiating a staff development plan for their organizations and in initiating a program to fit their organization's needs. Theoretical presentation and case examples of application will be made by a variety of agencies. Small group discussion will be used to apply the material to individual organization's situations. July 21-August 1, 1986

### MICROCOMPUTER IN AGRICULTURAL DEVELOPMENT

This course is designed to guide individuals and organizations in planning, acquiring, implementing and managing a microcomputer system. It is especially oriented to microcomputer uses in developing areas of the world. The course will deal with the analytical process needed for appraising and defining a system for a specific purpose. The course assumes participants have no prior experience. In the first week participants will be guided through the selection and purchasing of a computer to fit their needs, training, management applications and in the second module (week) participants will be prepared to decide on the use of various types of microcomputer through presentations and demonstrations. The third module will train participants in the initial use of four to six types of microcomputer software through hands-on experience at an IBM-PC. Course dates to be announced.





## ***The Twin Cities***

*The Twin Cities of Minneapolis and St. Paul, with a combined total population of about 610,000 people (2 million in the greater seven county metropolitan area), make up a kind of cultural and recreational mecca that is a model of urban growth and vitality. The Twin Cities are known for the richness of their cultural attractions: theater, music, dance and the visual arts; for their progressive political climate; for their commitment to education; for their extensive park systems (12,500 acres of woodland and 152 parks) and beautiful lakes (more than 200 in the metro area).*