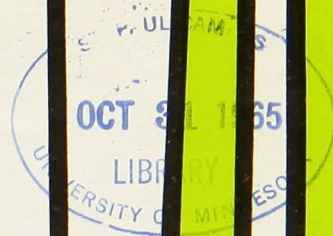


Extension Bulletin 325  
University of Minnesota  
Agricultural Extension Service

COPY 2

Supersceded by MW 2000  
EF #431



# ... HANGING PICTURES

MYRA B. ZABEL and RACHEL F. MUNSON

This archival publication may not reflect current scientific knowledge or recommendations.  
Current information available from University of Minnesota Extension: <http://www.extension.umn.edu>.



# HANGING PICTURES

Myra B. Zabel and Rachel F. Munson

|                                    |   |
|------------------------------------|---|
| Picture Hanging Guides.....        | 2 |
| Consider the Wall Space .....      | 2 |
| Consider Other Furnishings .....   | 2 |
| Consider Picture Size .....        | 2 |
| Consider the Grouping .....        | 3 |
| Consider the Background .....      | 3 |
| Mechanics of Hanging Pictures..... | 3 |

## Picture Hanging Guides

To gain full enjoyment from the pictures you select for your home, use the following guides for placing and hanging them.

### Consider the Wall Space

Look at the space where you wish to hang the picture. Is it square, rectangular, or vertical in its general proportions? Usually, you can successfully fill a space with a picture having proportions similar to those of the wall space. For example, a tall picture will be at home in a vertical space; a wide picture will repeat a horizontal space over a long sofa; or a collection of pictures will look right in a space proportional to the overall shape of the picture grouping.

### Consider Other Furnishings

Pictures are a part of your total room design and should be placed near other furnishings (figure 1). Look at the furnishings with which you want to use the picture. An end table and lamp at one end of a sofa, for example, may be balanced with a picture placed in a vertical position over the other end.

Place the picture close enough to the furniture to become a part of the grouping. A picture will belong to a grouping if the space between it and other items is less than its most narrow dimension. Too much space between picture and grouping will isolate the picture; too little space may produce a crowded effect.

Keep in mind all accessories you want to use in a grouping—lamps, candles, plants, etc. A picture will be obstructed if such accessories are placed too close to it.

Do not place pictures too high. Since people seldom remain standing in a room, hang your pictures low enough so they can be viewed clearly from a sitting position. Place children's pictures at a level where they can enjoy them.

Hang pictures at approximately the same level around a room to avoid a broken line effect. But remember that it is more important for a picture to belong to a grouping than for it to be in line with a picture on another wall.

### Consider Picture Size

Consider picture size relative to both furniture grouping and wall space (figure 2). A small picture will look out of place with a large chair or a large wall space. If you want to use a small picture that goes with a large-scale furniture grouping, combine it with other pictures or wall hangings.

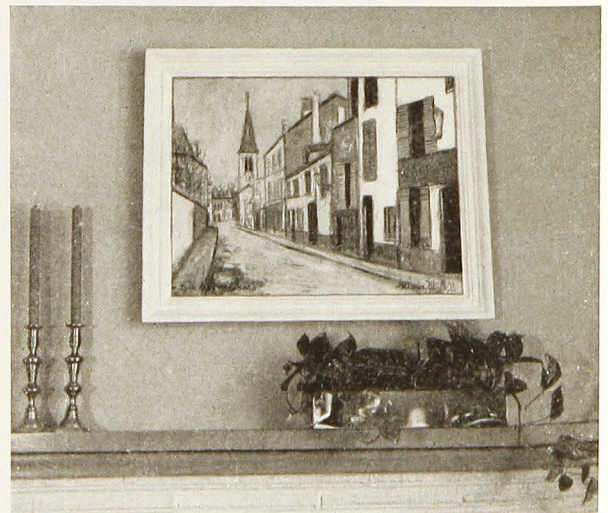


Figure 1.





Figure 2.

### Consider the Grouping

Pictures similar in subject, color, or medium can be grouped successfully. To tie them together, mat and frame them similarly. You can combine many pictures or hangings of various sizes and types into a single wall grouping, as long as the overall outline of the arrangement is pleasing. But don't combine too many shapes within a single grouping. Squares and rectangles combine well (figure 3).

The total space between pictures in a group should be less than the width of the smallest picture. A narrow space between pictures will give your picture arrangement a unified appearance (figure 3).

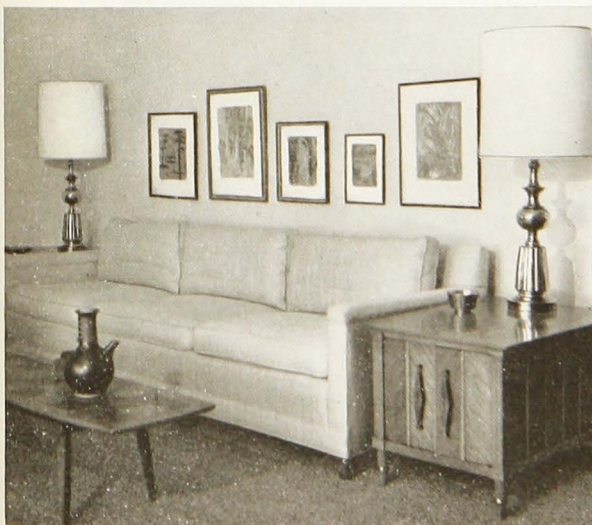


Figure 3.

Place pictures with strong directional lines so that the eye moves toward, not away, from the grouping.

### Consider the Background

Plain or nearly plain walls make excellent backgrounds for pictures. When the wall tone is neutral or a light shade of a color in the picture, the wall complements the picture.

A patterned wallpaper makes a poor background because it attracts attention to itself, not to the picture. Pictures hung on patterned walls need wide plain mats to provide rest space between picture and wall (figure 4).

Not all bare wall spaces need pictures.

### Mechanics of Hanging Pictures

Use a piece of paper cut the size of the picture to determine the best location for the picture in relation to furniture and accessories.

To find the spot for a nail or hook, measure from the bottom of the picture to the wire. Mark this point on the paper and then through the paper onto the wall (figure 5).

You can also use a piece of paper to arrange a group of pictures. Cut the paper large enough to hold the complete grouping. Place the paper on the floor and move pictures around on it until you find an arrangement you like. Draw around each picture. Place the paper on the wall (figure 6), and find positions for nails or hooks by the same method shown in figure 5.

A picture is unlikely to slip if you hang it with two nails or hooks instead of one. Drive nails in at a downward angle rather than straight. Then nails aren't likely to come out and plaster shouldn't crack.

Hang pictures so that nails, hooks, and wires are concealed. Exceptions to this rule are large or

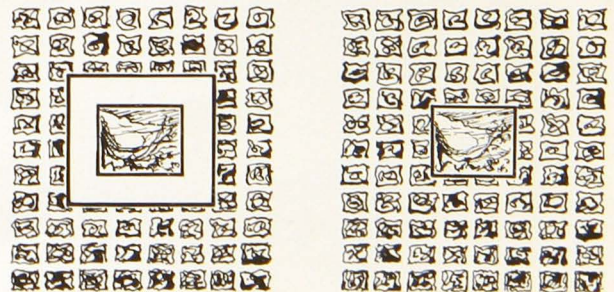


Figure 4.

heavy pictures—hang them with wires attached to the molding. Place wires parallel to each other and at right angles to the ceiling. Then paint wires the color of the wall.

To hang pictures flat against the wall, locate screw eyes for wires within the upper quarter of the frame. Your picture will tip forward if you place wires lower than this. Glue small squares of foam rubber to the lower corners of the frame—they will keep the picture straight and prevent dust from collecting behind it.

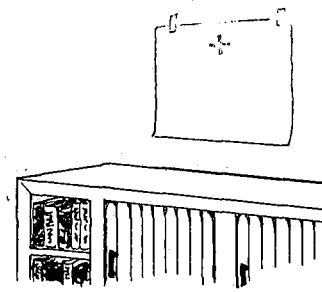


Figure 5.

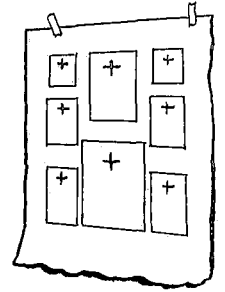
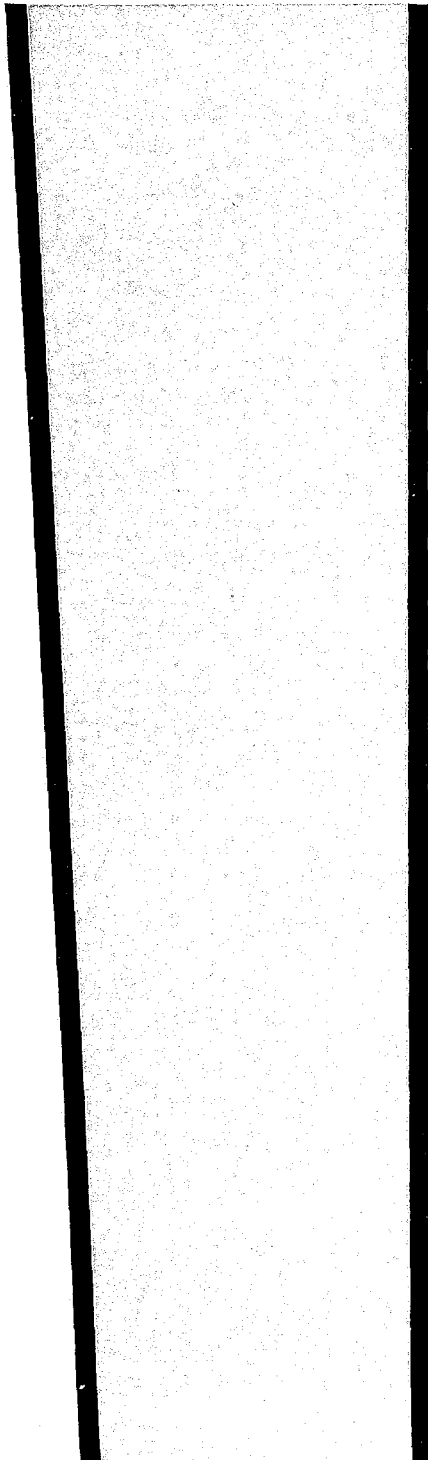


Figure 6.



### *Evaluate Your Picture Hanging*

- ◆ Does each picture enhance the total room design?
- ◆ Are pictures low enough to form a unit with other furnishings?
- ◆ Are all hanging devices concealed?

Myra B. Zabel is associate professor and extension specialist, home furnishings; Rachel F. Munson is instructor and assistant extension specialist, home furnishings. Acknowledgement is gratefully given to Glinda B. Leach and Louise Woodruff, University of Missouri Agricultural Extension Service, for illustrations and basic format used in Missouri Extension Circular 711.

EXTENSION BULLETIN 325, 1965

Issued in furtherance of cooperative extension work in agriculture and home economics, acts of May 8 and June 30, 1914, in cooperation with the U. S. Department of Agriculture. Luther J. Pickrel, Director of Agricultural Extension Service, University of Minnesota, St. Paul, Minnesota 55101.

10M—7-65