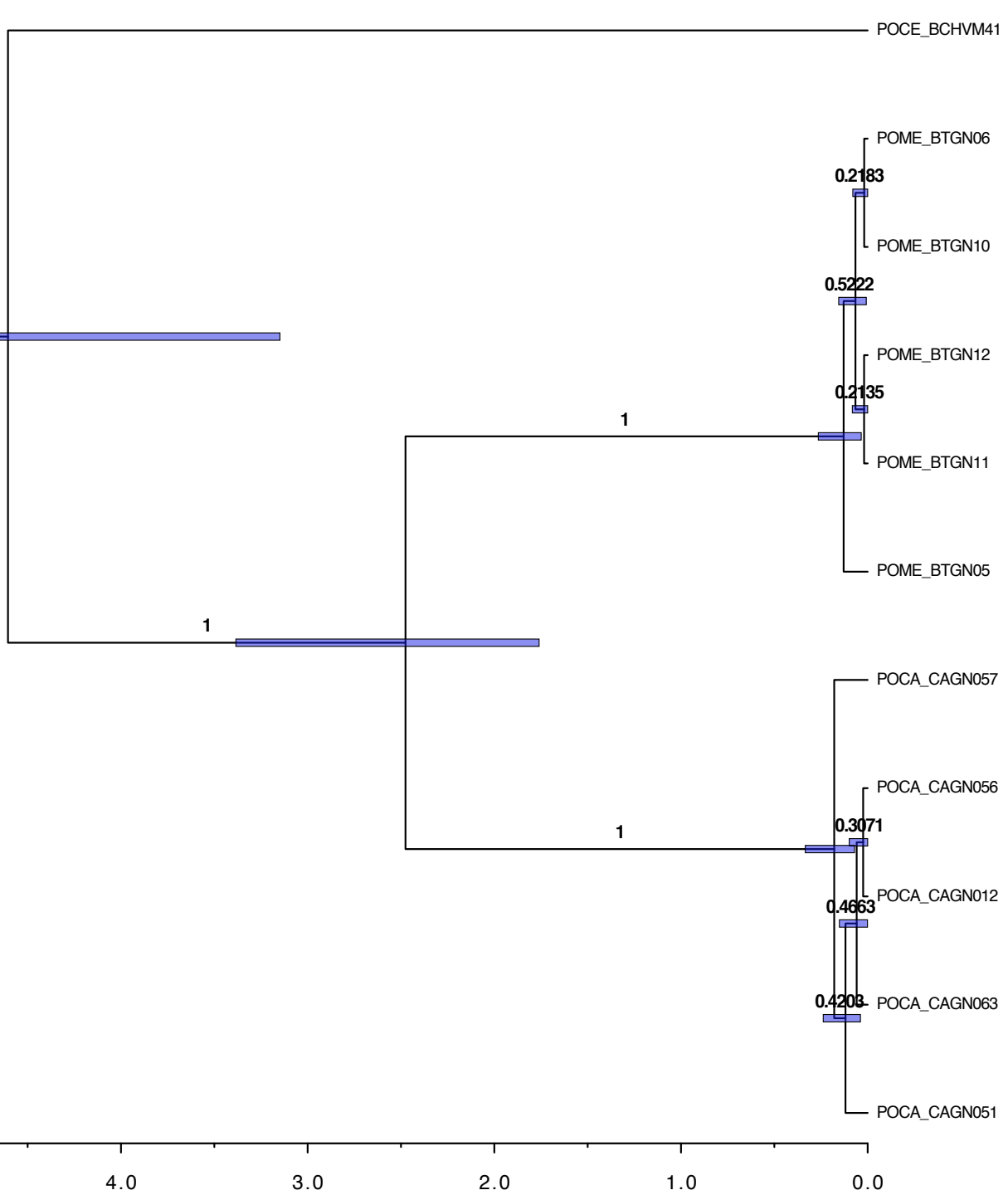
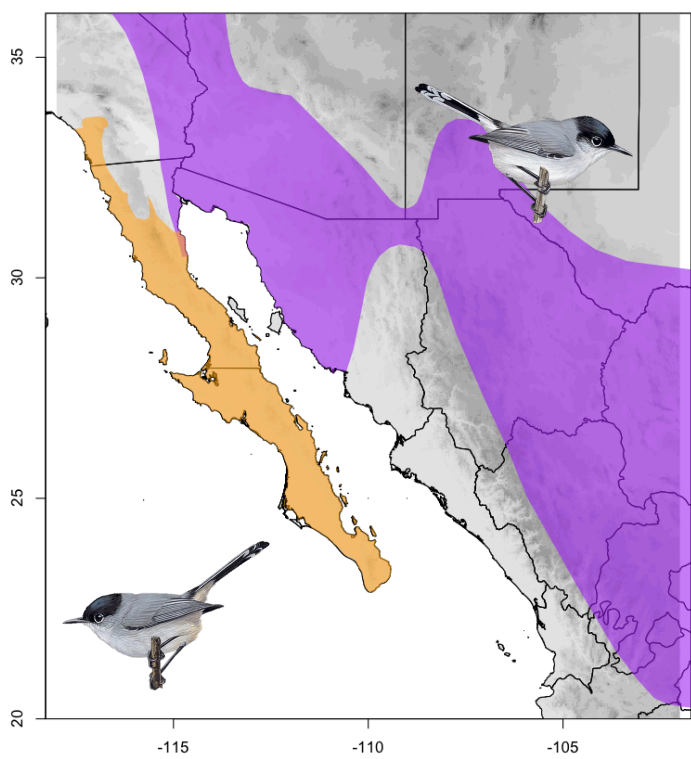


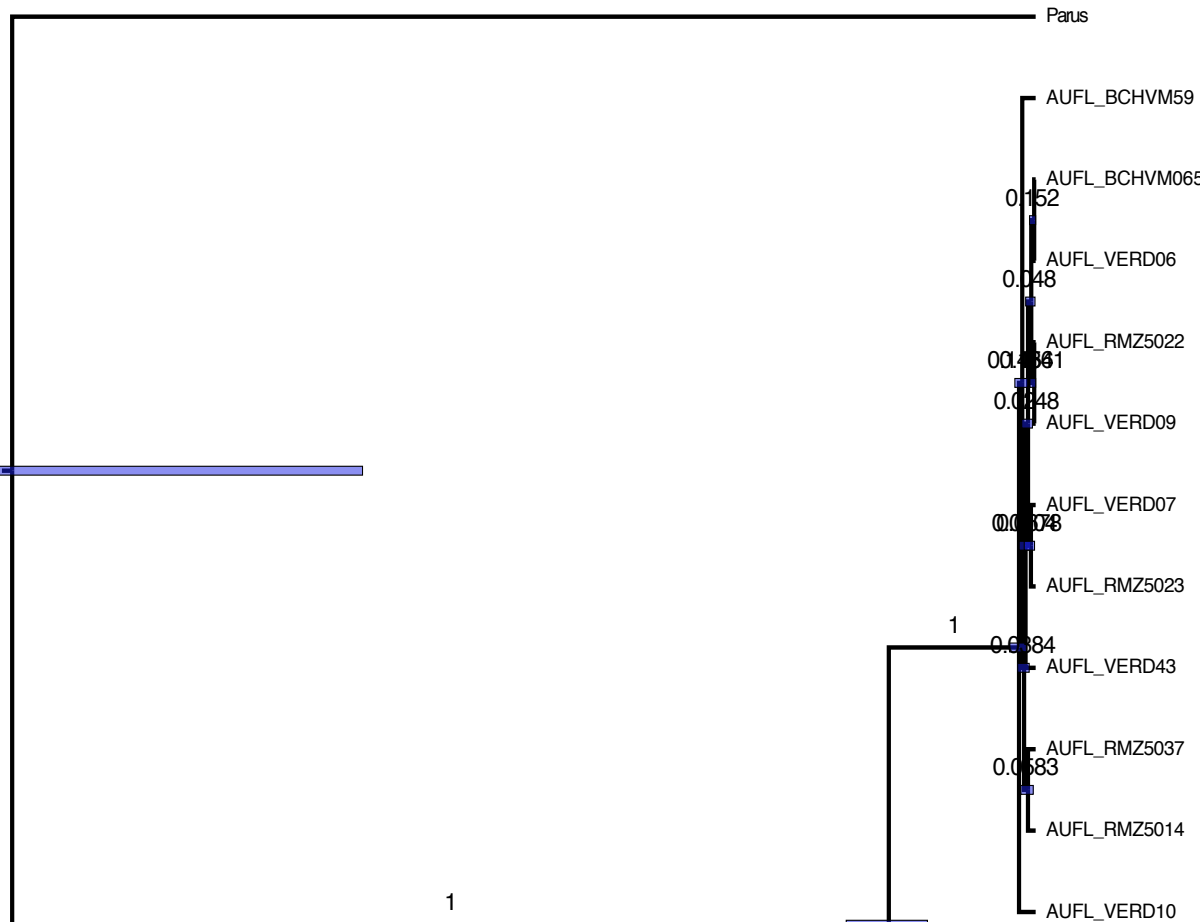
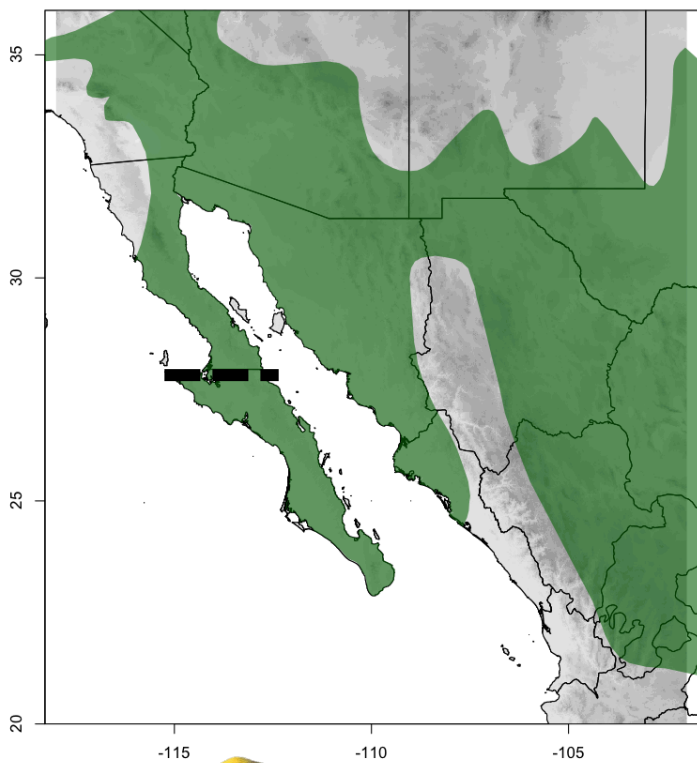
Appendix S2. Mitochondrial DNA strict-clock chronograms from BEAST¹ and geographic distributions² for eight taxon pairs arranged in descending time of divergence (Table 1, Fig. 2). Distribution colors: purple indicates northern/mainland species; orange indicates southern/peninsular species; green indicates one species with northern and southern clades delimited by a dashed line (corresponding to a subspecies). Top is northern clade and bottom is southern clade. Node bars on chronograms represent node height Highest Posterior Density intervals. Scale axes are in million years before present. Voucher numbers correspond to samples in Appendix S1.

- A. Gnatcatchers: *Polioptila californica* (POCA) and *Polioptila melanura* (POME).
- B. Verdin: *Auriparus flaviceps* (AUFL)
- C. Cactus wren: *Campylorhynchus brunneicapillus* (CABR)
- D. Quails: *Callipepla californica* (CACA) and *Callipepla gambeli* (CAGA)
- E. Le Conte's thrasher: *Toxostoma lecontei* (TOLE)
- F. Towhees: *Melospiza crissalis* (PICR) and *Melospiza alberti* (PIAL)
- G. Gray and Bendire's thrashers: *Toxostoma cinereum* (TOCI) and *Toxostoma bendirei* (TOBE)
- H. Gila woodpecker: *Melanerpes uropygialis* (MEUR)

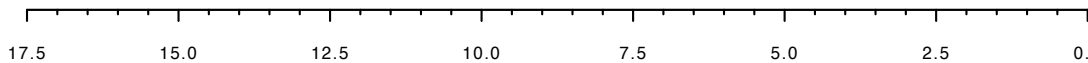
1. Drummond AJ, Suchard MA, Dong Xie & Rambaut A (2012) Bayesian phylogenetics with BEAUti and the BEAST 1.7. Mol Biol Evol 29, 1969-1973.
2. Ridgely, R. S., T. F. Allnutt, T. Brooks, D. K. McNicol, D. W. Mehlman, B. E. Young, J. R. Zook and BirdLife International (2011). Digital Distribution Maps of the Birds of the Western Hemisphere, version 4.0. In BirdLife International and NatureServe (2011) Bird species distribution maps of the world. BirdLife International, Cambridge, UK and NatureServe, Arlington, USA.

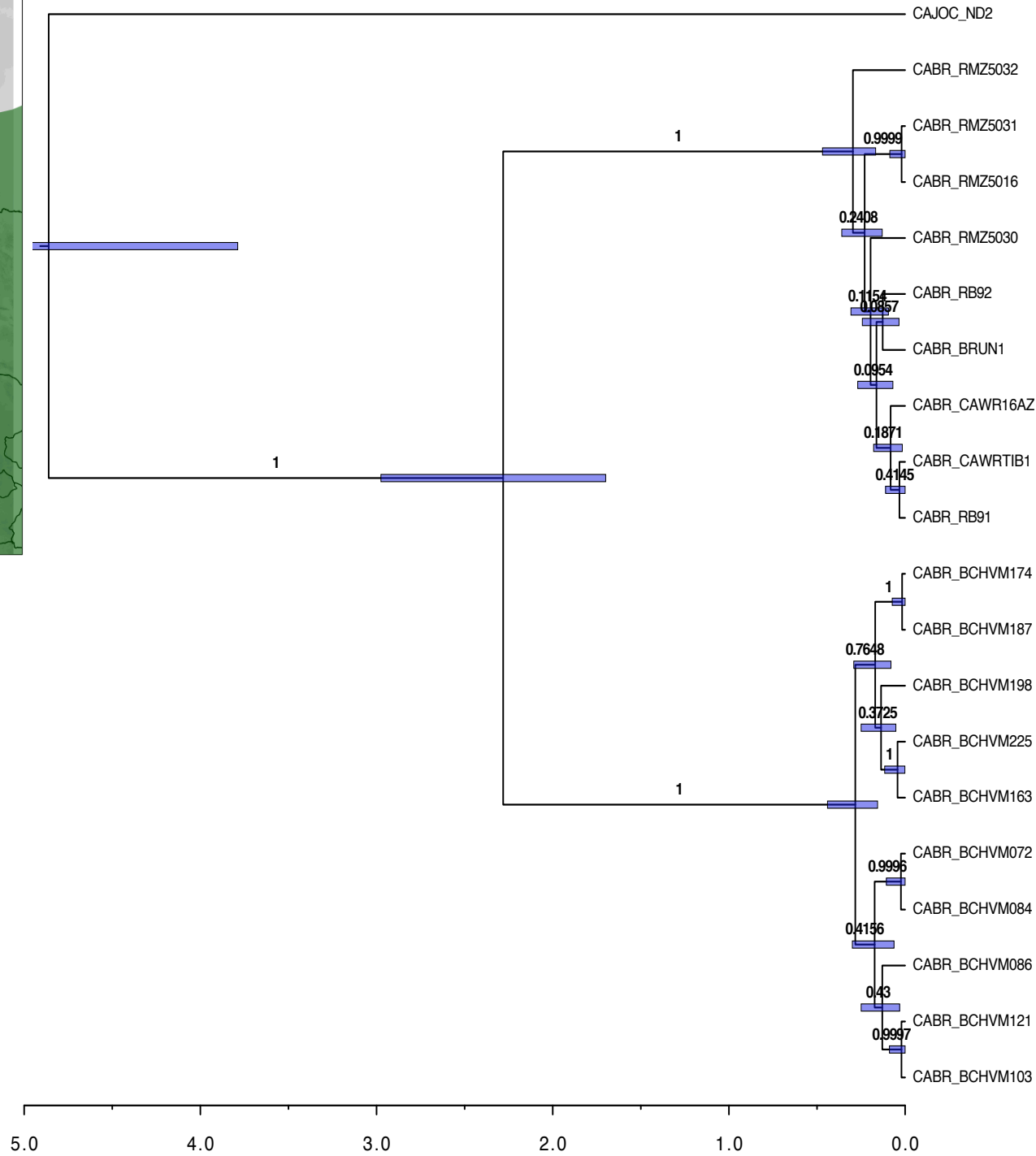
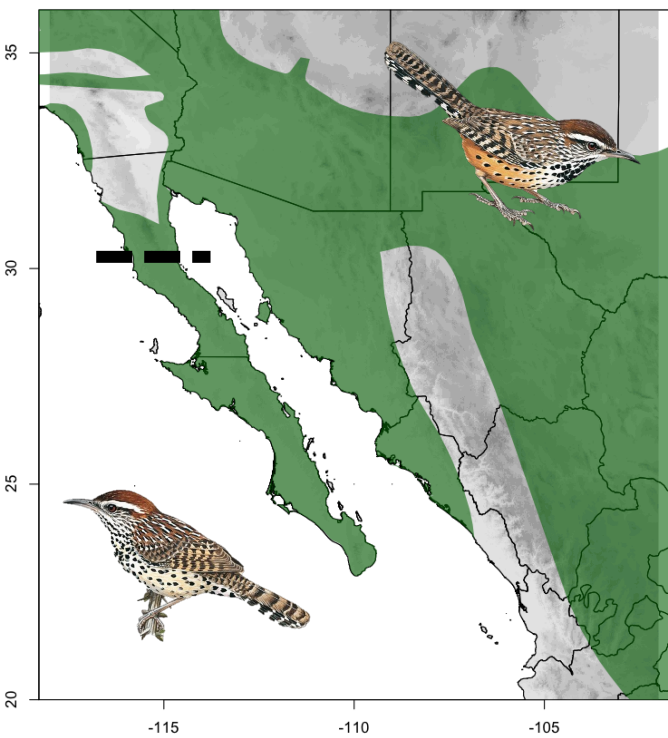


A

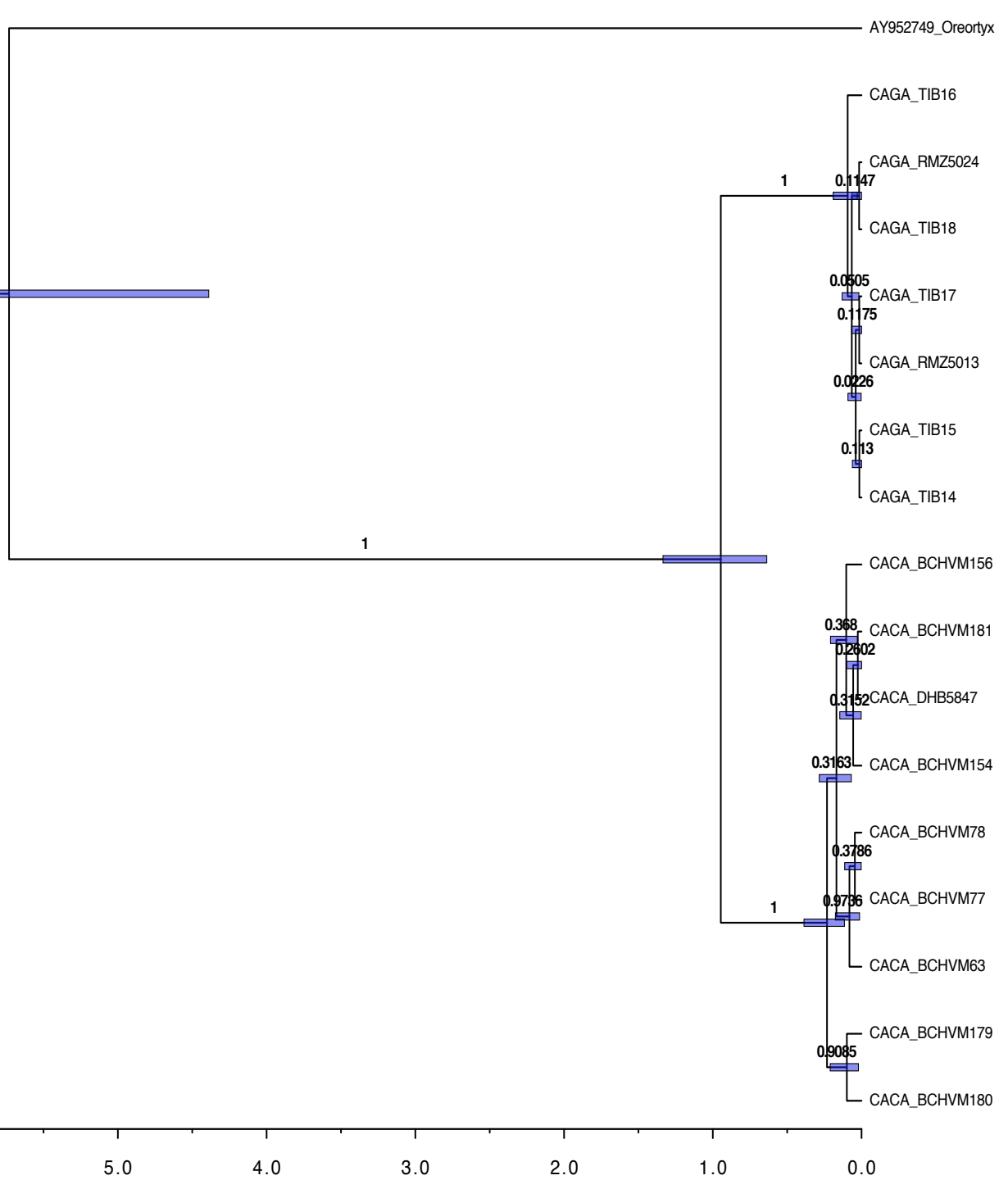
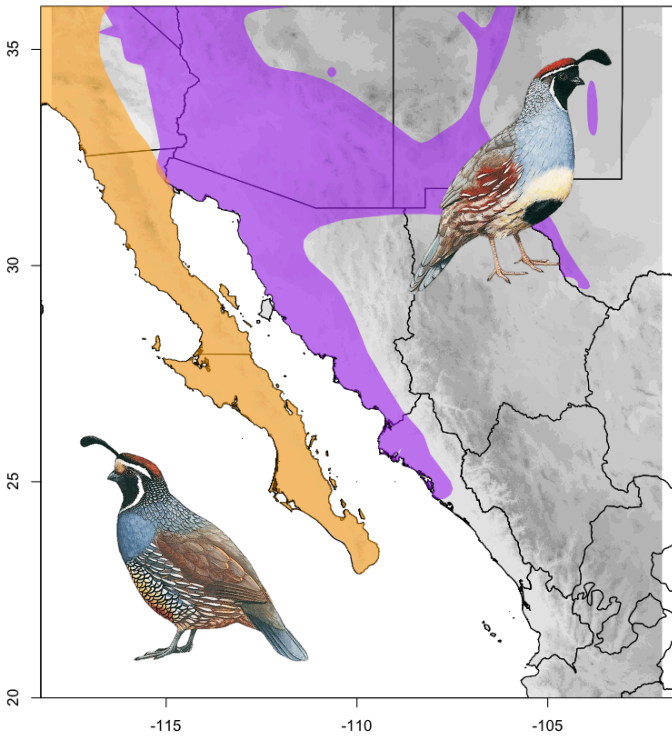


B

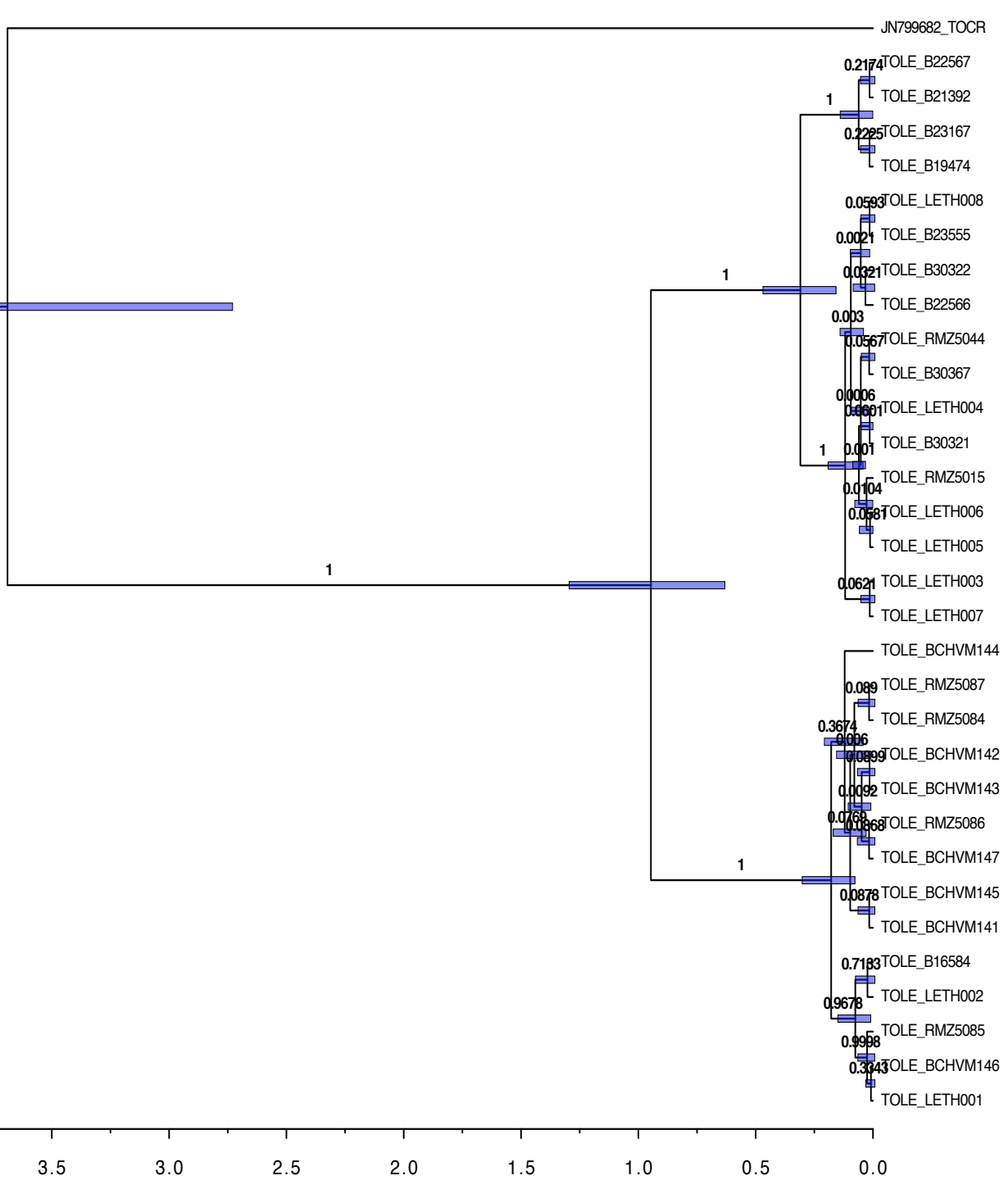
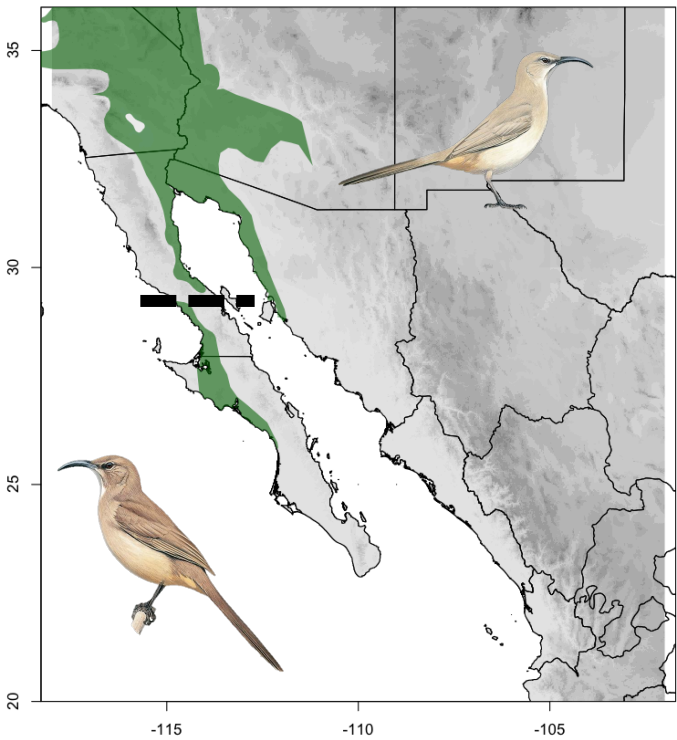




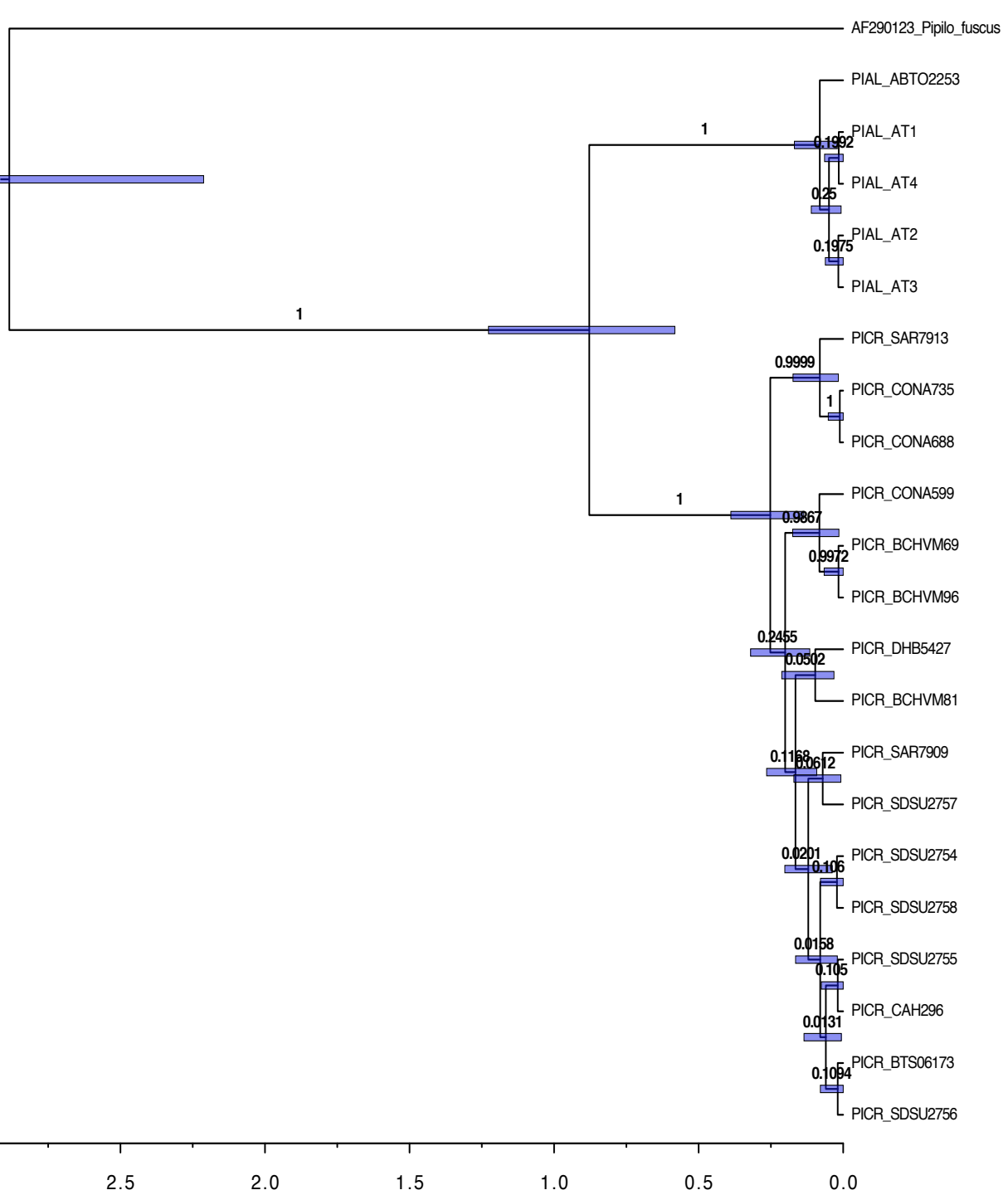
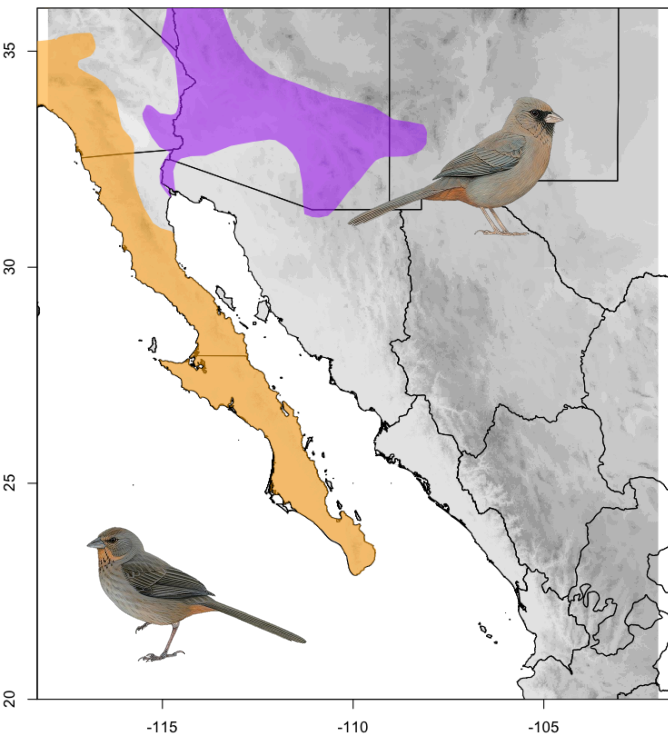
C



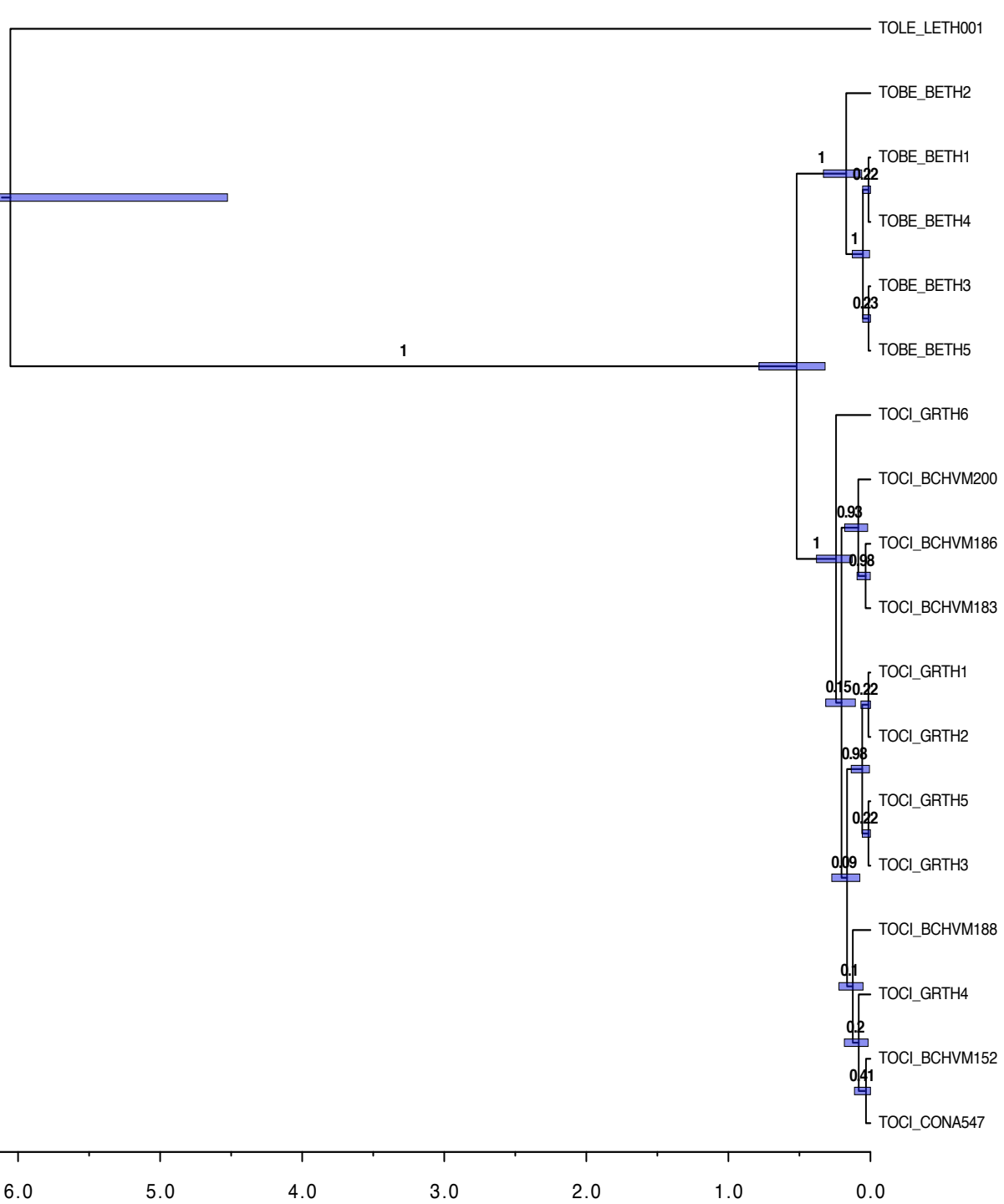
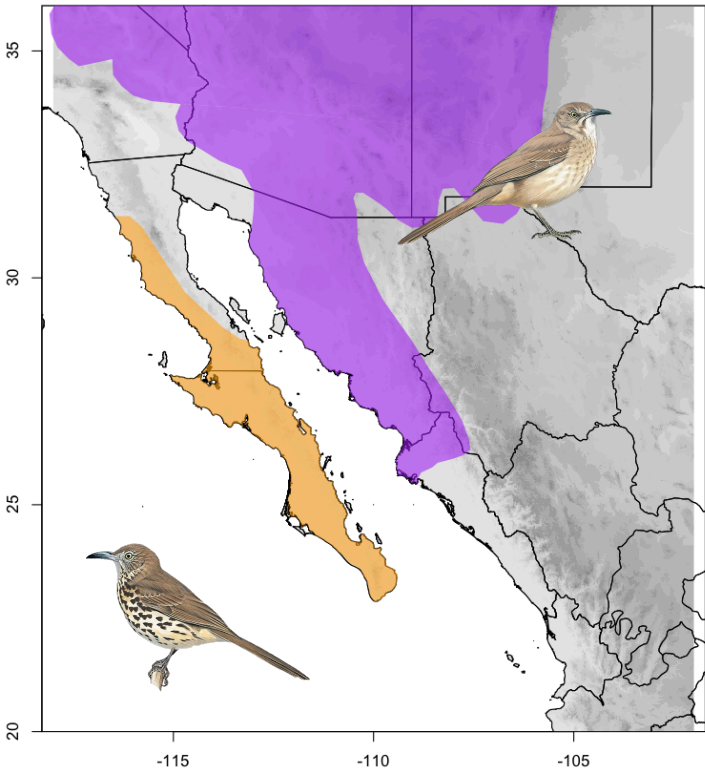
D



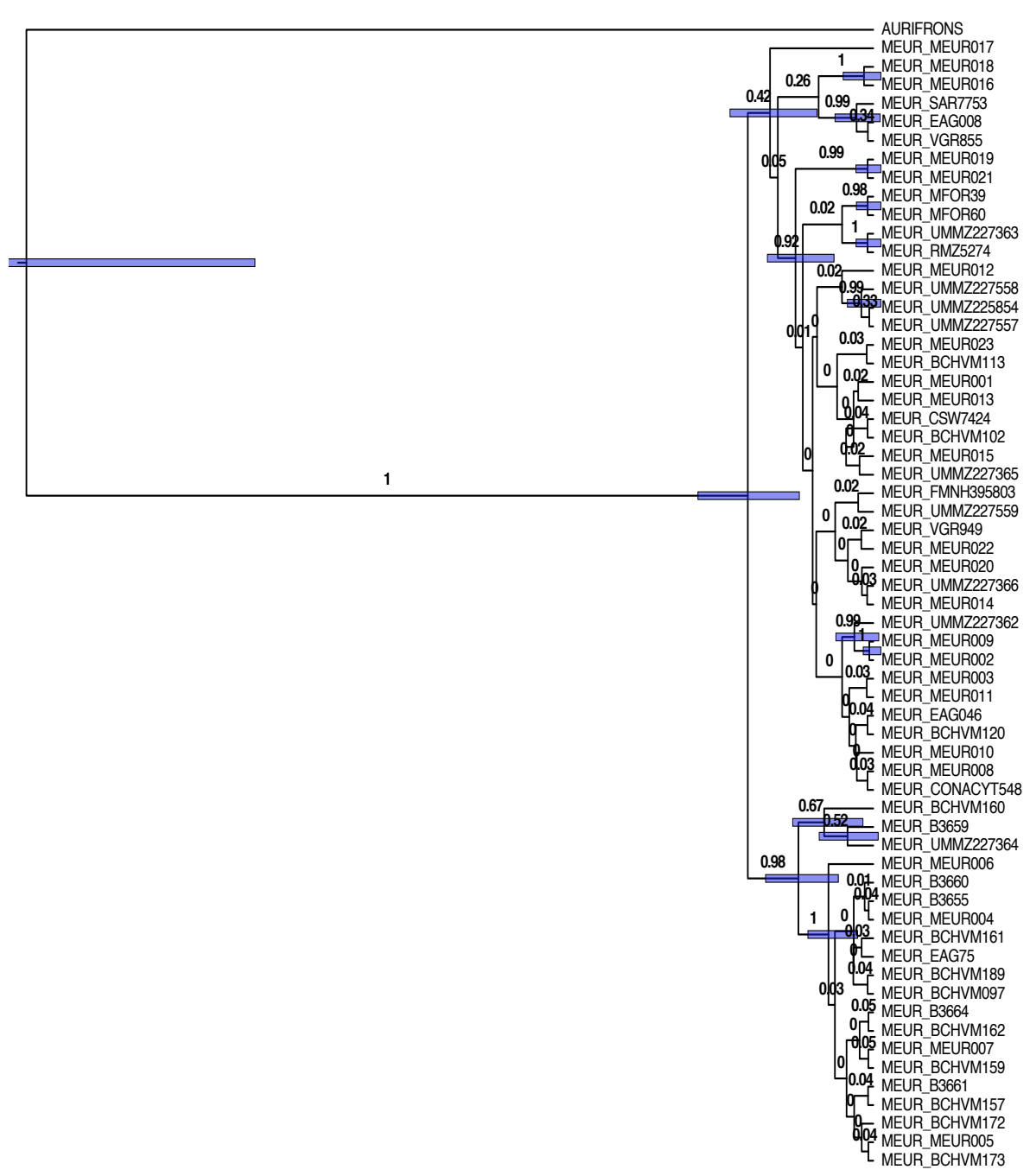
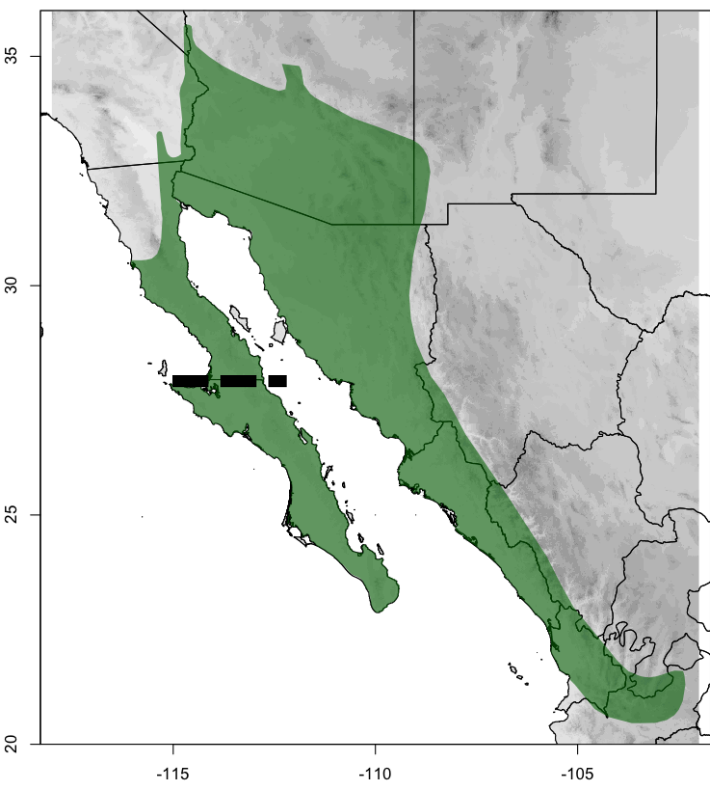
E



F



G



H

