

THE VISITOR

Devoted to the Interests of Agricultural Education in
Minnesota Schools

VOL. XIII

DECEMBER, 1925

No. 4

ORGANIZING PART TIME CLASSES

A part time class is composed of boys who have left school and are working on farms. Usually such boys are less than 21 years of age. During the current school year, twenty-eight of these classes have been organized in Minnesota. A recent visit by the writer revealed a number of variations in the organization of part time classes at Owatonna, Albert Lea and Austin. It has been thought worth while to describe these organizations and to contrast them.

The first step in organizing the class at Owatonna was to send an announcement, letter and enrollment blank to a mailing list of sixty persons within the trade territory of the Owatonna community. This list was constructed in part from a survey of boys living on farms which was recently made by Mr. Moore in cooperation with Paul

Calrow, State Supervisor of Agricultural Education. Some additional names were obtained from other sources. The announcement follows:

ANNOUNCING AGRICULTURAL SHORT COURSE

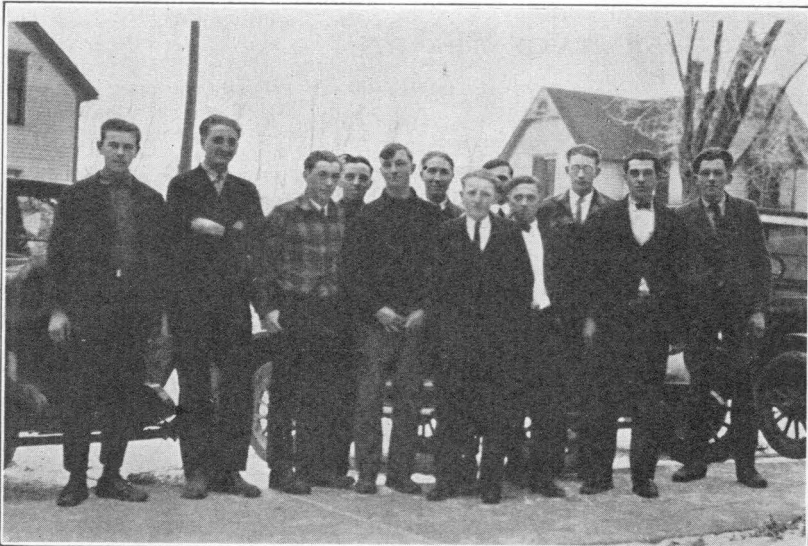
I. WHERE?

The Course will be held at the **Owatonna High School** and starts **Monday, January 25** and will continue 6 weeks, ending Friday, March 5. Classes will meet from Monday to Friday of each week. Classes start at 10:15 a. m. and end at 3:00 p. m.

II. SUBJECTS OFFERED

A. Agriculture.

The work in agriculture this year will depend upon the choice of the members enrolled. Probably dairying will be the course desired by most members. The work will be of a



This Group at Alden Shows the Type of Boy Who Is Receiving Part-Time Instruction

THE VISITOR

Published monthly by the Division of Agricultural Education, University of Minnesota, University Farm, St. Paul, Minn.

Entered as second class matter at the post-office at St. Paul, Minn., under the act of August 24, 1912.

Acceptance for mailing at special rate of postage provided for in section 1103, Act of October 3, 1917, authorized August 2, 1918.

STAFF

A. V. STORM	F. W. LATHROP
A. M. FIELD	V. E. NYLIN
D. D. MAYNE	G. F. HOWARD
W. P. DYER	T. A. ERICKSON

practical nature and will cover such topics as:

1. Selection of feeds.
2. Winter and summer feeding.
3. Rations—Economical selection—Balancing.
4. Breed study.
5. Dairy herd management.
6. Dairy cattle judging, etc., etc.

B. Farm Arithmetic—Business English

In addition to the work in agriculture each student will be given work in **Farm Arithmetic** and **Business English**. A special teacher will conduct these classes and the work will be of a practical nature, so that it will be of value to either farm boys who expect to stay on the farm or those who will take additional school work.

III. WHO CAN TAKE THE COURSE?

Any young man, living on the farm who is between 14 and 21 years of age can enroll. An 8th grade diploma is not necessary.

IV. HOW MUCH WILL IT COST?

The course is **practically free**. No tuition will be charged. A small enrollment fee of \$1.50 will be charged to cover incidental expenses. All other expenses will consist merely of the cost of paper, note books, etc.

V. ENROLL NOW

This course has been arranged especially for the benefit of boys and young men who are on the farm and cannot attend school except during the winter months. We have selected a time when farm work is least pressing. **Can you spend 6 weeks in school?** Our class space is limited so **enroll now**.

Following the letter and announcement, about twenty-five visits were made to individuals. Mr. Moore was aided here by two of his nine-months students who did very effective work.

The schedule from one to two each afternoon is given to farm arithmetic and from two to three to business English. On Monday and Wednesday from 9:45 to 10:45, the class goes to the shop. The part time and nine-months classes in farm shop are combined. Dairying is scheduled for Monday and Wednesday mornings one hour, and one and one-half hours on Tuesday, Thursday, and Friday to fit in with the schedule of the teacher of agriculture.

A former grade school principal has been secured to teach the farm arithmetic and business English. Since there is a shop instructor in the school who handles the farm shop course, the teacher of agriculture teaches only dairying.

The class consists of eight persons. They range in age from 13 to 20, three being 16 and three being 18 years of age. All are now working on farms, six being on fathers' farms. Four are staying in town and four go home each day. These last four boys live 2 to 3.5 miles from the high school. In respect to last grade attended, the class ranges from seventh grade to junior year in high school. Five of the class dropped out during or at the end of the eighth grade. This group is probably above average in previous schooling.

At Albert Lea the part time class was held in the creamery at Lerdal, eight miles from Albert Lea. This is Mr. Thurwachter's third part time class this year. One of the two previous classes met at the high school and the other met at the school in Alden, ten miles from Albert Lea. One more class is planned. The length of the course is 15 days in each case. The indications are that the classes conducted at centers away from the high school are more satisfactory.

Mr. Thurwachter also sent out an announcement. His mailing list was made out in part from a survey of farm boys similar to the survey at Owatonna. Names were also obtained from evening school groups and students in the nine-months course. At Lerdal a talk before a group of adults resulted in several parents sending in sons. The buttermaker, Mr. Foley, assisted by means of conferences with

eligible boys. Mr. Thurwachter made no personal visits to secure enrollment.

The course at Lerdal consists of dairying, arithmetic and spelling. Mr. Thurwachter teaches all three subjects. These subjects were named in the announcement of the course. The sessions last from 1:30 to 3:30 p. m. Most of the time is given to dairying, the arithmetic and spelling instruction coming near the end of the period.

The following table shows the ages of the three groups:

	Number Enrolled	Age Range	Median Age
Albert Lea	5	15-18	16
Alden	12	15-25	18
Lerdal	12	14-24	15.5

The Lerdal group is the youngest of any of the groups observed. In respect to last grade attended, the range of the group is sixth to tenth grade,

The part time class at Austin is held in the city of Austin beginning December 7 and ending February 19. The class spends from 9:00 to 12:00 each day in a shop which was formerly an automobile school. The afternoon classes are held at the high school.

Mr. Wiegand, the teacher of agriculture, mailed an attractive printed announcement to a mailing list made up from his own acquaintance and with the help of day and evening school students. The teacher made a few personal visits to secure enrollment and certain day students acted as key men.

The course consists of mechanics, scheduled from 9:00 to 12:00 each morning, and livestock problems, arithmetic, citizenship and spelling scheduled from 1:10 to 3:20 each afternoon. Two special instructors have been engaged for the mechanics instruction. Each student receives in-



The Part-Time Class at Lerdal Is Younger Than Many Classes

the median grade being the eighth. These boys go back and forth from home to the class each day. The distances range from one-eighth mile to five miles. Nine live less than three miles distant.

The Lerdal organization differs from the Owatonna organization chiefly in that the agriculture teacher gives all the instruction, the place of instruction is at a central point near the homes of the boys, the course is of less duration and the recruiting was accomplished without personal visits by the teacher.

struction in the following jobs: valve grinding, ignition, carburetor adjustment, tightening bearings, rear axle and clutch adjustment, theory of the magneto and types; coils, theory and troubles of starters and generators, care and repair of batteries, welding, cold metal work, lathes, making punches and chisels, babbiting, operation of tractors.

Of the forty-five periods given to livestock problems, twenty-five are given to dairying, fifteen to swine and five to poultry. The problems have been selected by the group and the

	Enrollment	Age Range	Median Age	Grade last Attended—Range	Grade last Attended—Median	Place Held	Subject Emphasized	Length of Course in days	Recruiting
Owatonna	8	13-20	17	7-11	8	High School	Dairy	30	Announcement and personal visits by students and self.
Albert Lea (Lerdal)	12	14-24	15.5	6-10	8	Creamery	Dairy	15	Announcement, publicity and key men.
Austin	30	15-26	18	7-12	8	High School and Shop	Mechanics	45	Announcement, personal visits by students and self.

managerial phases emphasized. The arithmetic, citizenship and spelling are given short periods near the end of the afternoon session, 2:20 to 3:30. All the subjects except mechanics are taught by Mr. Wiegand. On Thursday afternoon the class has a recreation period from 2:20 to 4:00 at the Shaw Memorial Gymnasium.

The enrollment in the class is thirty. The ages range from 15 to 26, the median age being 18. In respect to the last grade attended, the range is seventh to twelfth and the median is 8. There are 8 seventh graders in the group. These boys enrolled are now on farms, but three or four have indicated that they will leave the farm. Forty to fifty per cent of the students stay in Austin during the course, the percentage changing with the weather and condition of the roads. Mr. Wiegand believes that an enrollment of thirty is somewhat too large and that fifteen to twenty would be very desirable.

The distinguishing features of the Austin organization are: (1) the large number enrolled, (2) the emphasis given to mechanical work, (3) the maturity of the group and (4) the length of the course.

The table above summarizes the difference in the three classes.

The three classes demonstrate at least two facts; first, that there is a need for this kind of instruction on the

part of many boys on farms; and second that the group attracted to these classes is more mature and further advanced in education than has been supposed.

F. W. L.

RECENT PUBLICATIONS

Practical Poultry Management. J. E.

Rice and H. E. Botsford. Another text in the Wiley Farm Series. Organized on the job basis with chapters on underlying principles inserted. Selected references at the end of chapters. John Wiley and Sons, New York.

Beef Cattle. Roscoe R. Snapp. Wiley

Agricultural Series. A suitable reference book in a high school agriculture library. Discusses everyday problems of beef cattle production drawing heavily on experimental data. Also discusses broader aspects of beef production. John Wiley and Sons, New York.

Wheat Marketing Lessons. L. J. Nor-

ton and L. L. Scranton. A mimeographed series of nine lessons. Particularly adapted to Illinois conditions but suggestive for teachers in Minnesota. Address L. L. Scranton, University of Illinois, Urbana, Illinois.

Dairy Cattle. W. W. Yapp and W. B.

Nevens. Wiley Farm Series. John Wiley and Sons, New York.