

Minnesota Landscape Arboretum

Master Plan Update:

Circulation and Development Framework

Board of Regents Facilities and Operations Committee
June 13, 2013



UNIVERSITY OF MINNESOTA

Driven to DiscoverSM

Board of Regents Master Plan Policy

(adopted 1993)

- The principle of creating and maintaining a distinctive and aspiring vision for the physical development of each campus;
- The principle of enriching the experience of all who come to the campus;
- The principle of maximizing the value of existing physical assets while responding to emerging/changing physical needs;
- The principle of an inclusive, accountable, and timely process for creating and implementing a master plan vision.





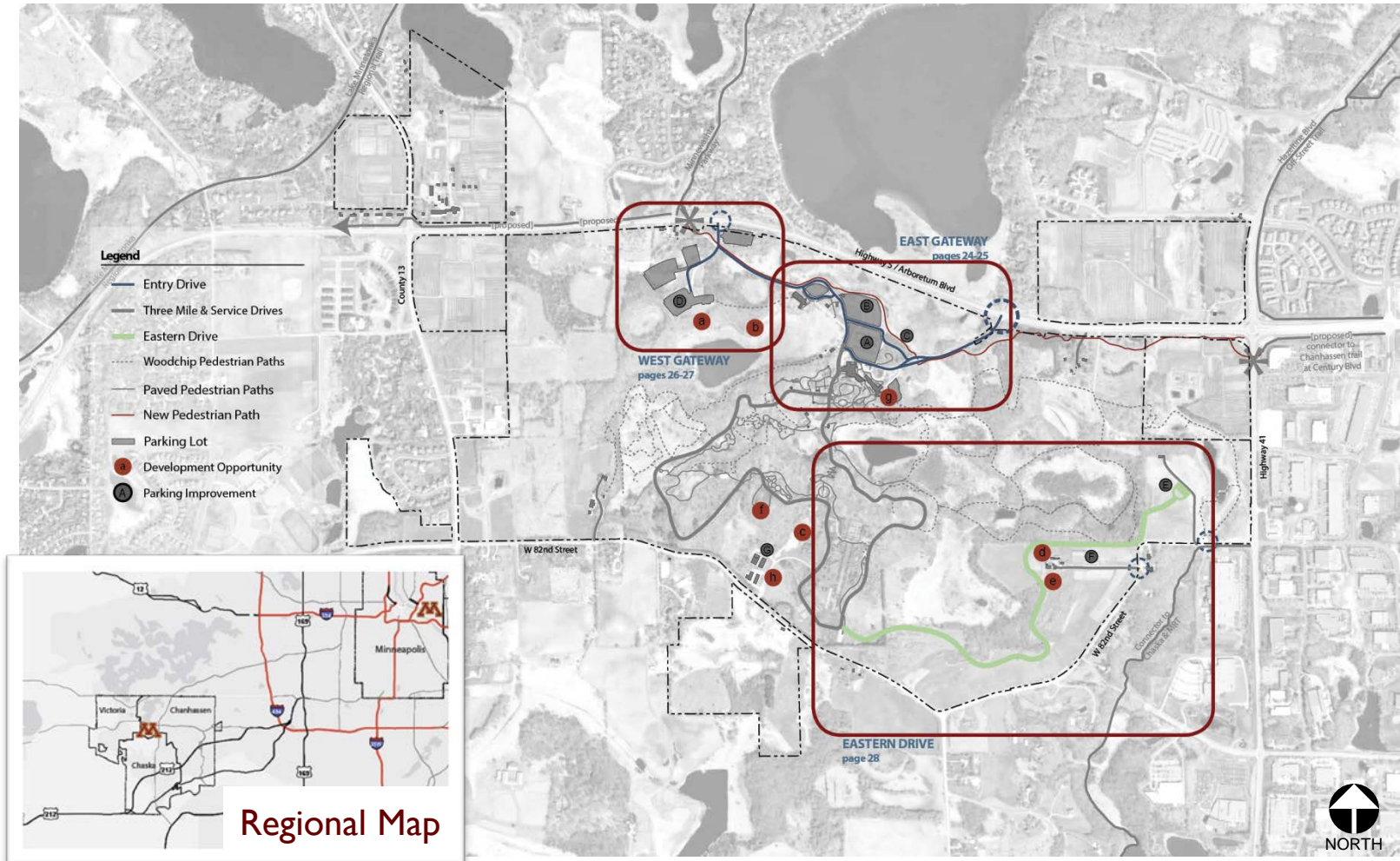
University of Minnesota Landscape Arboretum

Circulation & Development Framework



UNIVERSITY OF MINNESOTA
Driven to DiscoverSM

Location Map



Purpose of Master Plan Update

- Express the Arboretum's unique mission through its physical presence
- Involve the Arboretum community in the update process through discussions, interviews and board input
- Create a flexible plan to guide future development
- Affirm overall goals and objectives of the 1998 Master Plan
- Ensure short term goals fit the long term vision



Guiding Principles

- Maintain the Arboretum's character and beauty while addressing future program needs and revenue generation
- Provide greater physical access to the Arboretum
- Ensure a safe and secure Arboretum environment for guests, volunteers, staff, exhibits and collections
- Create a clear pedestrian, bicycle and vehicular circulation system with a hierarchy of trails, roads and walks.



1998 Master Plan Key Findings

- Access, signage, and available land limit opportunities to expand collections
- Key entry points should be signaled to improve safety
- A new Visitor Center should become the hub of activities
- Interconnected, accessible walkways should link collections, exhibits, and services
- Acquisition of land within designated boundaries is critical

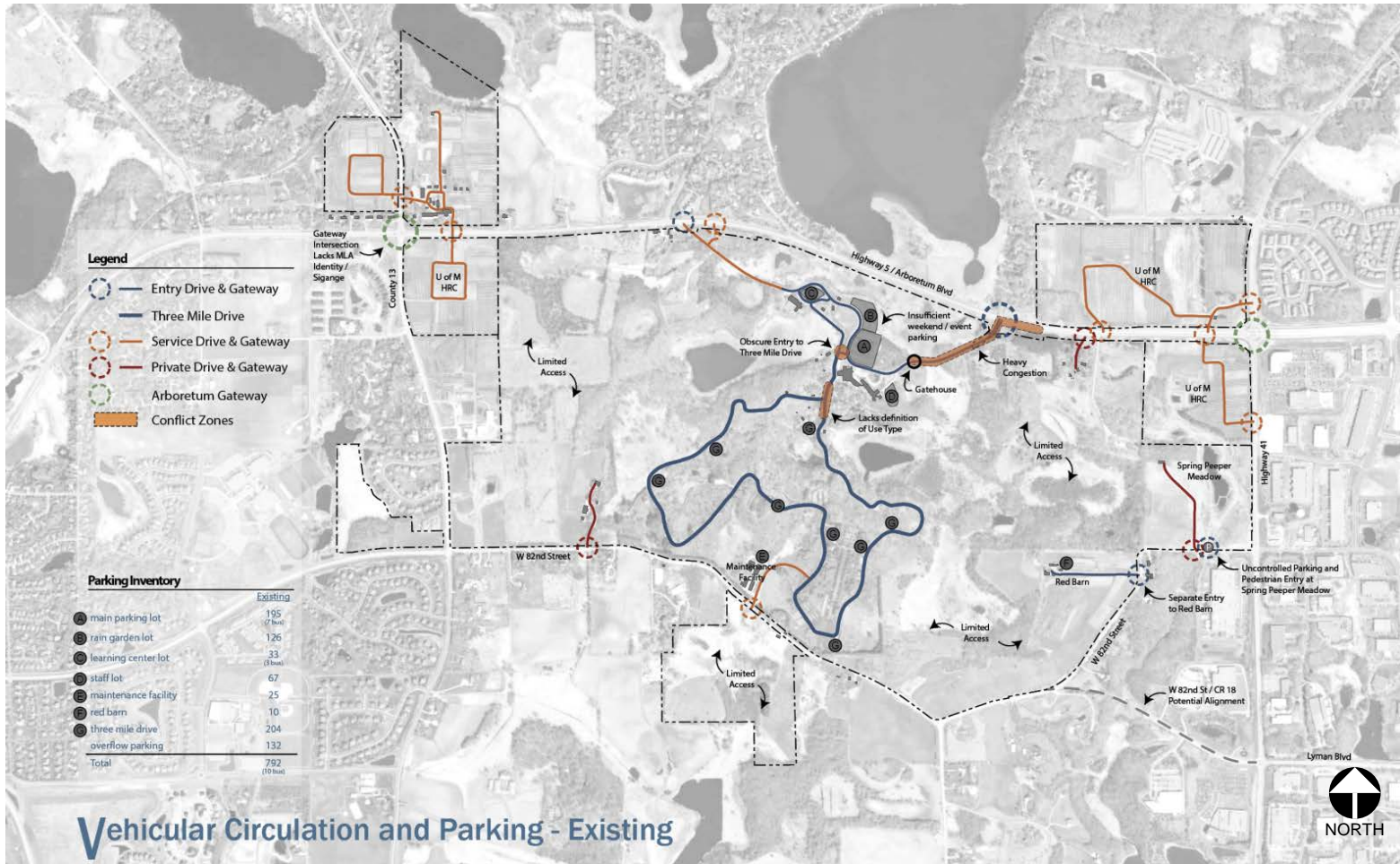


Trends and Assumptions

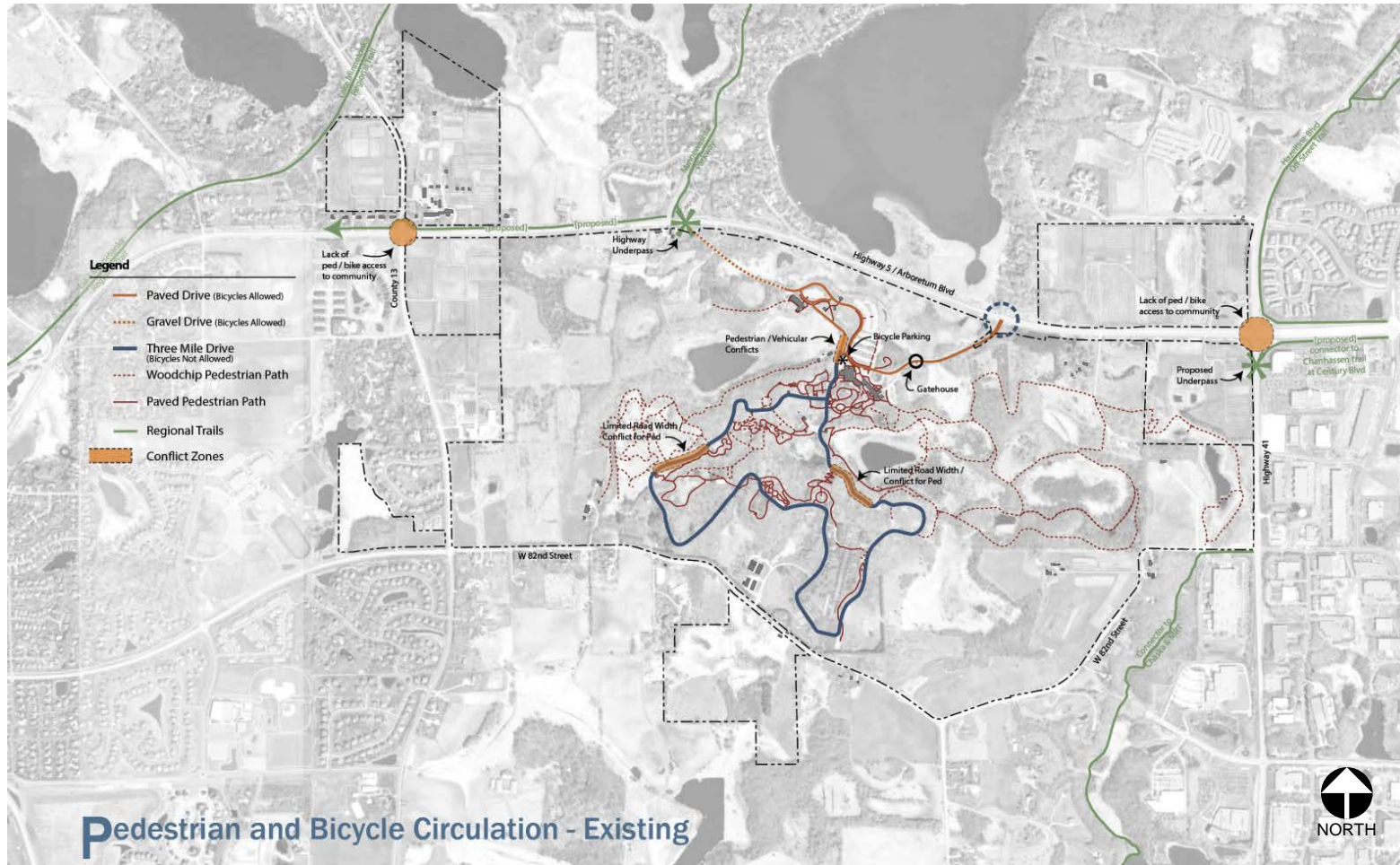
- Increasing annual attendance, peak demand in spring and fall seasons
- Evolving communications can support self-guided experience
- Metropolitan growth continues to influence edges
- Donor support remains strong but is increasingly challenged
- On-site research will continue
- Events maintain target levels of visitors throughout the year



Existing: Vehicular Circulation and Parking



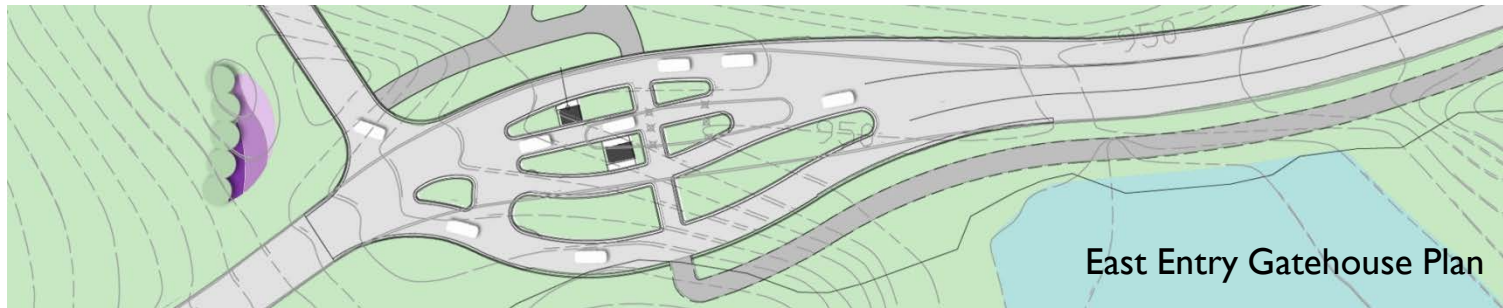
Existing: Pedestrian and Bicycle Circulation



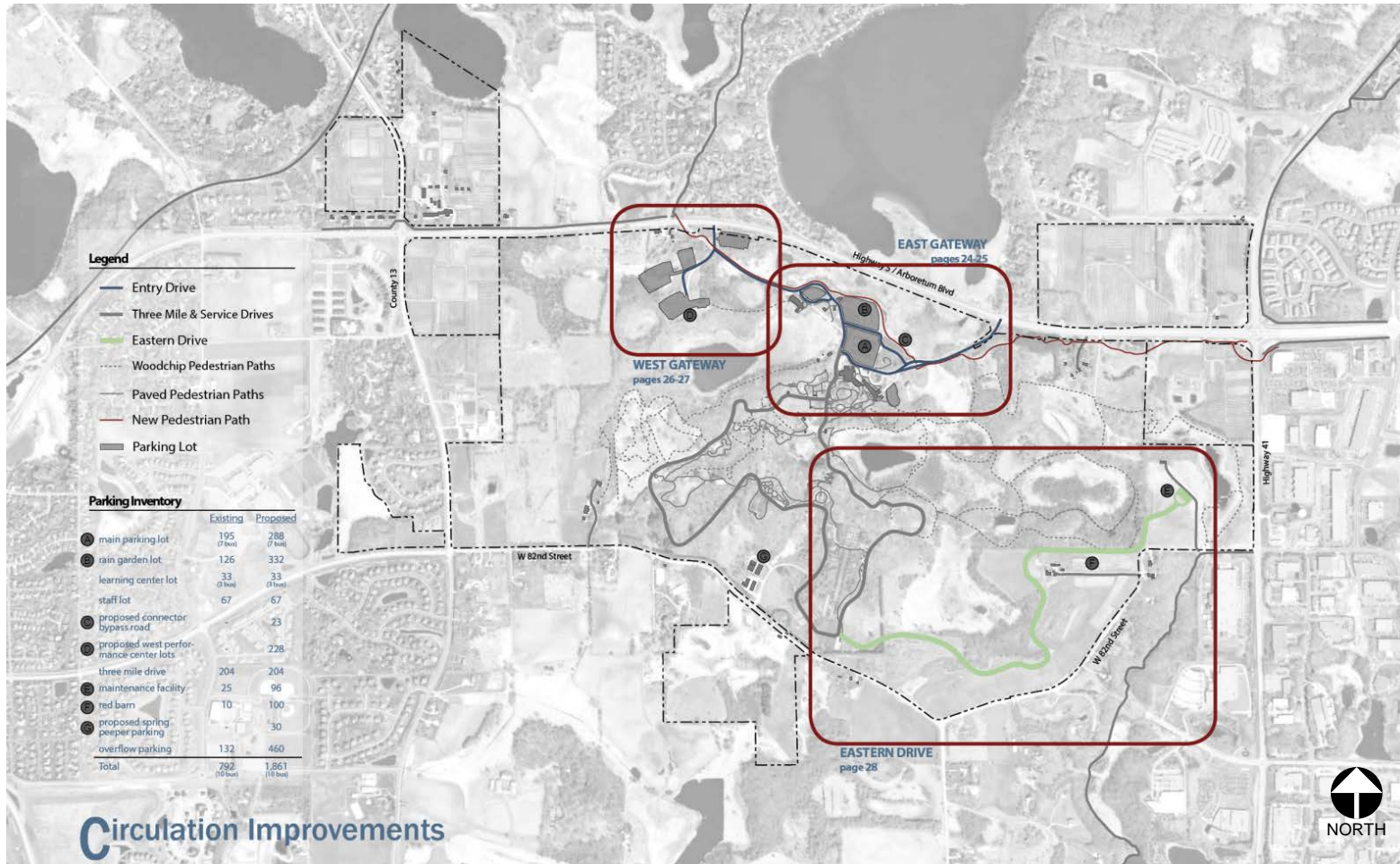
Key Initiatives:

Circulation Improvements

- East Gateway and Parking
 - Move visitors through the gate and providing sufficient parking during high turnout events
- West Gateway and Linkage Roadway
 - Move more people through the Arboretum safely by providing a second gatehouse access
- Eastern Drive
 - Access to the Red Barn and Spring Peeper Meadow



Key Initiatives: Circulation Improvements



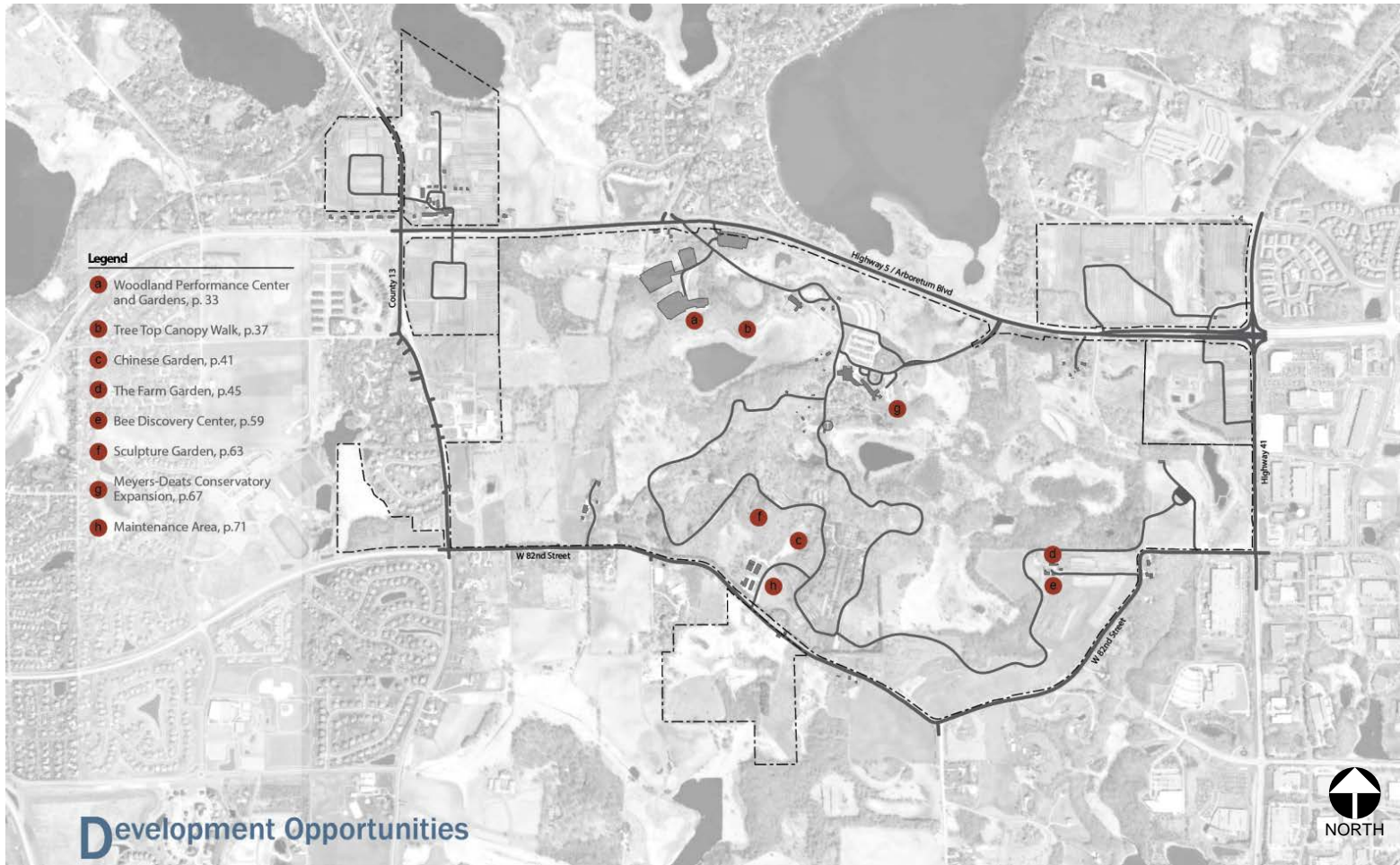
Key Initiatives: Development Opportunities

- Woodland Performance Center and Gardens, p.33
- Tree Top Canopy Walk, p.37
- Chinese Garden, p.41
- Bee Discovery Center, p.59
- Sculpture Garden, p.63
- The Farm Garden, p.45
- Meyers-Deats Conservatory Expansion, p.67
- Maintenance Facility Improvements, p.71

* page numbers reference project descriptions in the plan document



Key Initiatives: Development Opportunities



UNIVERSITY OF MINNESOTA

Driven to DiscoverSM



UNIVERSITY OF MINNESOTA

Driven to DiscoverSM